

# V&V Reference Report

## L2 ASCDS Version : 8.4.5

Observation 12312 - L2 Version 2  
Chandra X-Ray Center

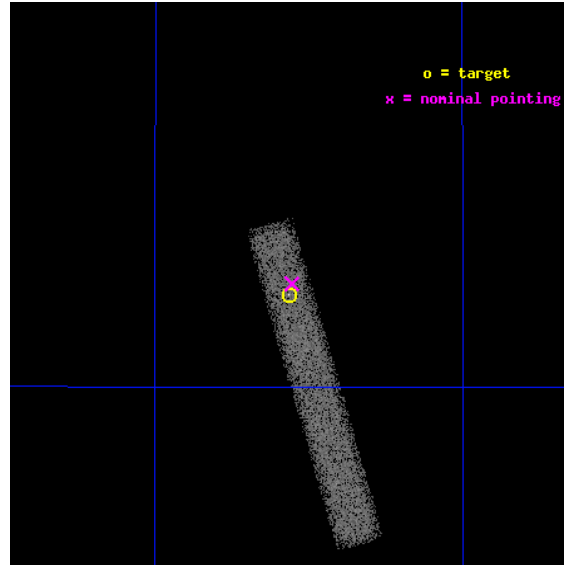
L2 Processing Date : Jun 30 2012

## Contents

<b>1</b>	<b>Front</b>	<b>2</b>
<b>2</b>	<b>OBI</b>	<b>3</b>
2.1	OBI . . . . .	3
2.1.1	Images . . . . .	3
2.1.2	Bias . . . . .	3
2.1.3	Parameters . . . . .	4
2.1.4	Events . . . . .	4
2.2	Compared Parameters . . . . .	5
2.3	Aspect . . . . .	6
2.4	Star Slots . . . . .	9
2.4.1	Slot 3 . . . . .	9
2.4.2	Slot 4 . . . . .	10
2.4.3	Slot 5 . . . . .	11
2.4.4	Slot 6 . . . . .	12
2.4.5	Slot 7 . . . . .	13
2.5	FID Slots . . . . .	14
2.5.1	Slot 0 . . . . .	14
2.5.2	Slot 1 . . . . .	15
2.5.3	Slot 2 . . . . .	16
<b>A</b>	<b>Summary</b>	<b>17</b>
A.1	Status . . . . .	17
A.2	Comments . . . . .	17

# 1 Front

seq_num	501371	Sequence number
obs_id	12312	Observation id
title	The first 'non-magnetar' soft gamma repeater	Proposal title
observer	Dr. Nanda Rea	Principal investigator
object	SGR 0418+5729	Source name
dtcycle	0	&#160
cycle	P	events from which exps? Prim/Second/Both
ra_targ	64.64125	Observer's specified target RA [deg]
dec_targ	57.539694	Observer's specified target Dec [deg]
ra_nom	64.638876999196	Nominal RA [deg]
dec_nom	57.544375089653	Nominal Dec [deg]
roll_nom	73.6951854052	Nominal Roll [deg]
revision	2	Processing version of data
ontime	30009.198211312	Sum of GTIs [s]
livetime	27216.7587623	Livetime [s]
ontime7	30009.198211312	Sum of GTIs [s]
l2events	17919	Number of level 2 events

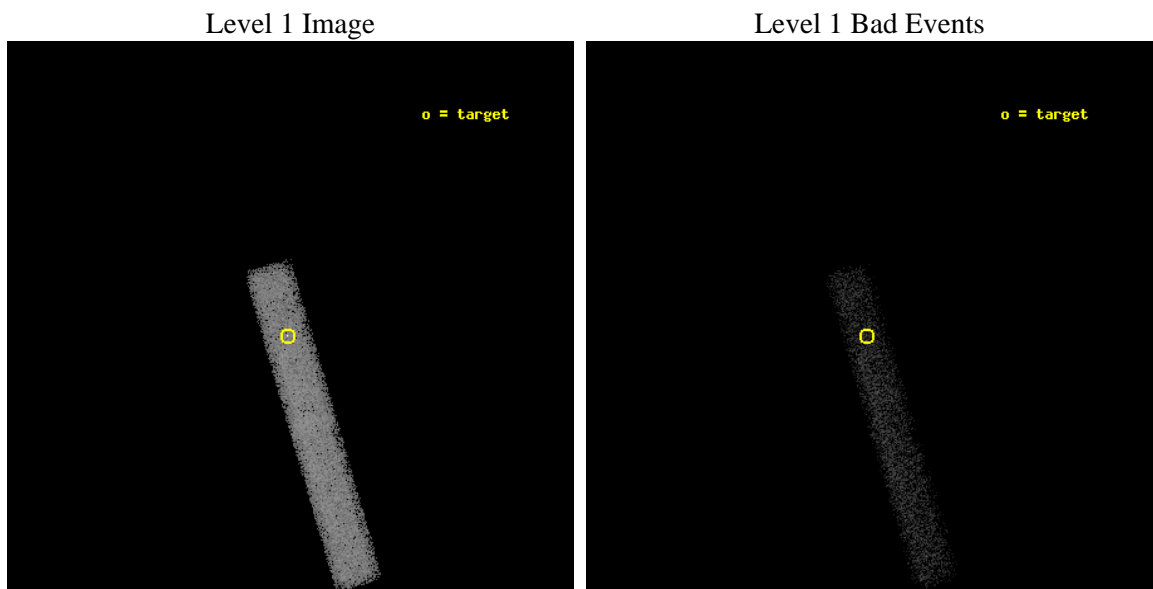




## 2 OBI

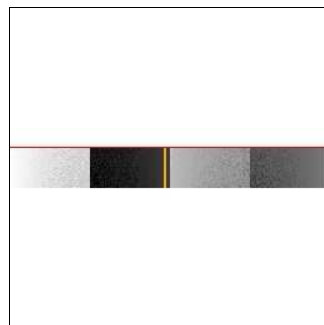
### 2.1 OBI

#### 2.1.1 Images



#### 2.1.2 Bias

Chip 7



### 2.1.3 Parameters

obi_num	0	Obi number	sched_exp_time	30000.000000	[s] Scheduled observation exposure time
ascdsver	8.4.5	Processing system revision	ontime	30009.198211312	Sum of GTIs [s]
caldsver	4.5.0	&#160	ontime7	30009.198211312	Sum of GTIs [s]
date	2012-06-30T14:25:27	Date and time of file creation	l1events	37068	Number of level 1 events
revision	2	Processing version of data			

### 2.1.4 Events

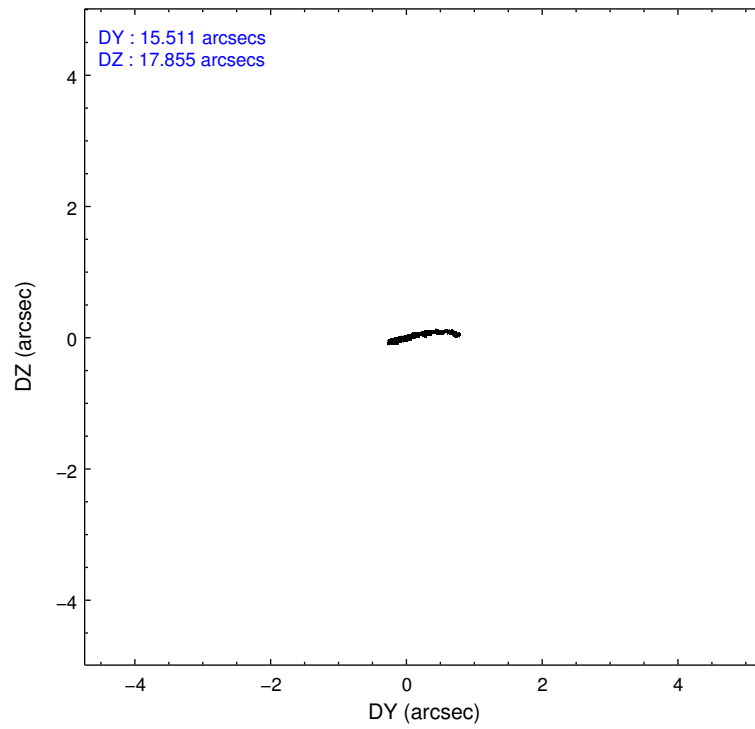
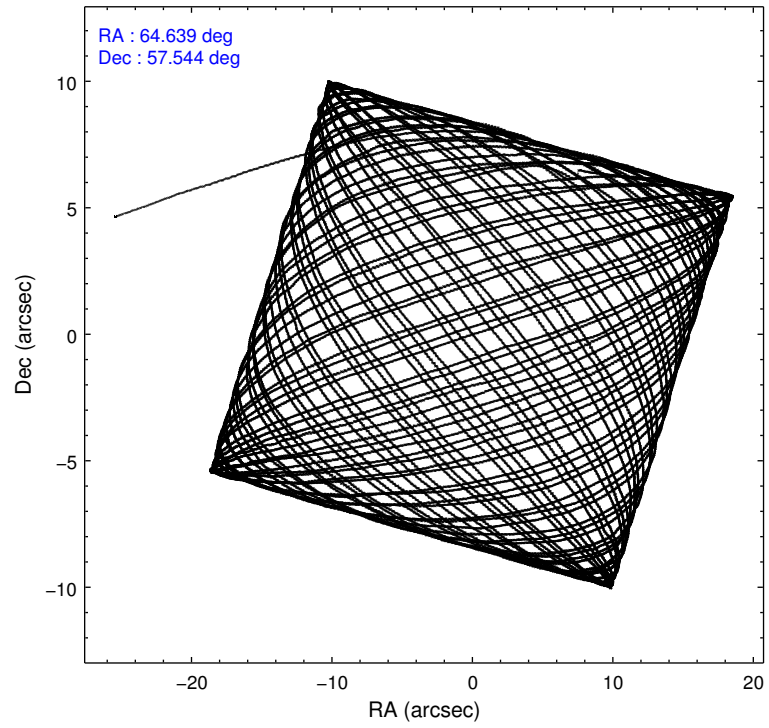
	<b>ccd 7</b>
level 1 events	37068
rejected events	18245
rejected %	49%

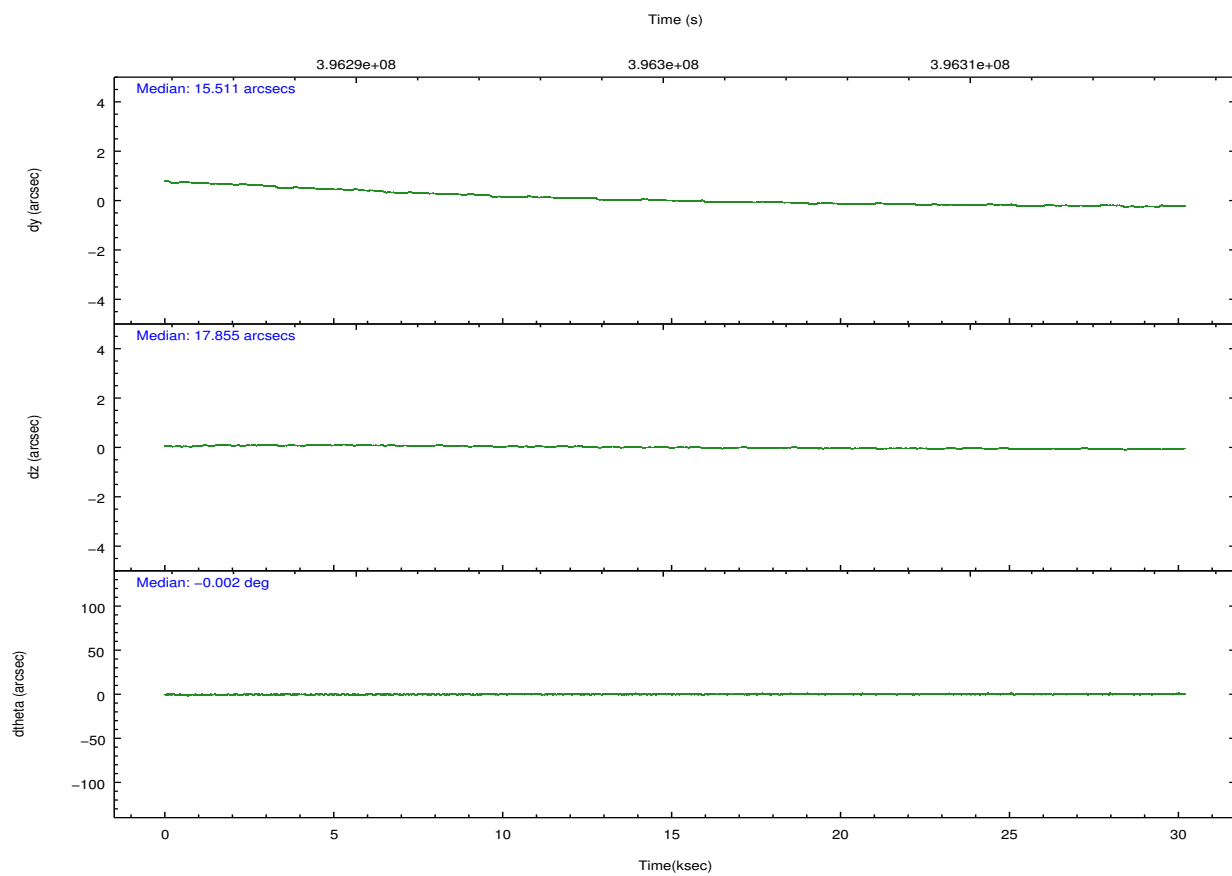
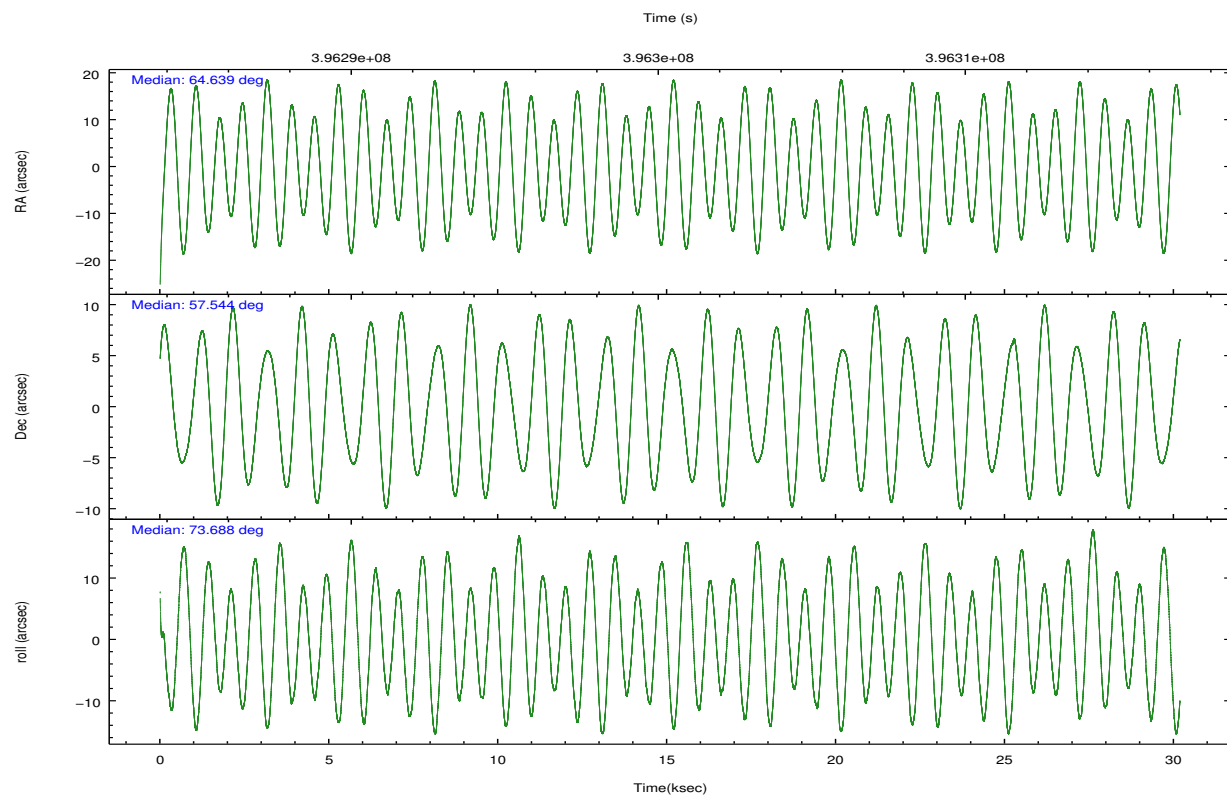
	<b>ccd 7</b>
grade 0 events	2030
	5%
grade 1 events	49
	0%
grade 2 events	3632
	9%
grade 3 events	2493
	6%
grade 4 events	2515
	6%
grade 5 events	3808
	10%
grade 6 events	8153
	21%
grade 7 events	14388
	38%

## 2.2 Compared Parameters

Parameter	Planned	Actual	Parameter	Planned	Actual
Instrument	ACIS	ACIS	Obspar format version number	7	7
Detector	ACIS-7	ACIS-7	Obspar file type	PREDICTED	ACTUAL
Grating	NONE	NONE	Obspar update status	NONE	UPDATED
Data mode	VFAINT	VFAINT	Number of optional ACIS chips dropped	0	0
Observation mode	POINTING	POINTING	On-chip summing requested	N	N
[deg] Pointing RA	64.651582	64.63887699919573	Subarray requested	CUSTOM	1/8
[deg] Pointing Dec	57.517891	57.54437508965301	Subarray start row	449	449
[deg] Pointing Roll	73.527842	73.69518540520004	Subarray row count	128	128
[mm] SIM focus pos	-0.684267	-0.6828225247311905	Alternating exposures requested	N	N
[mm] SIM defocus	0	0.001444936568705701	[s] Primary exposure time	0.000000	0.4
[mm] SIM translation stage pos	-190.132523	-190.1425803651734			
[mm] SIM translation stage offset	0	0.01005778216563158			
[s] Observation start time (MET)	396285473.184000	396284714.70597			
Observation start date	2010-07-23T15:16:47	2010-07-23T15:05:14			
[s] Observation end time (MET)	396315473.184000	396316566.5826			
Observation end date	2010-07-23T23:36:47	2010-07-23T23:56:06			
Read mode	TIMED	TIMED			

## 2.3 Aspect



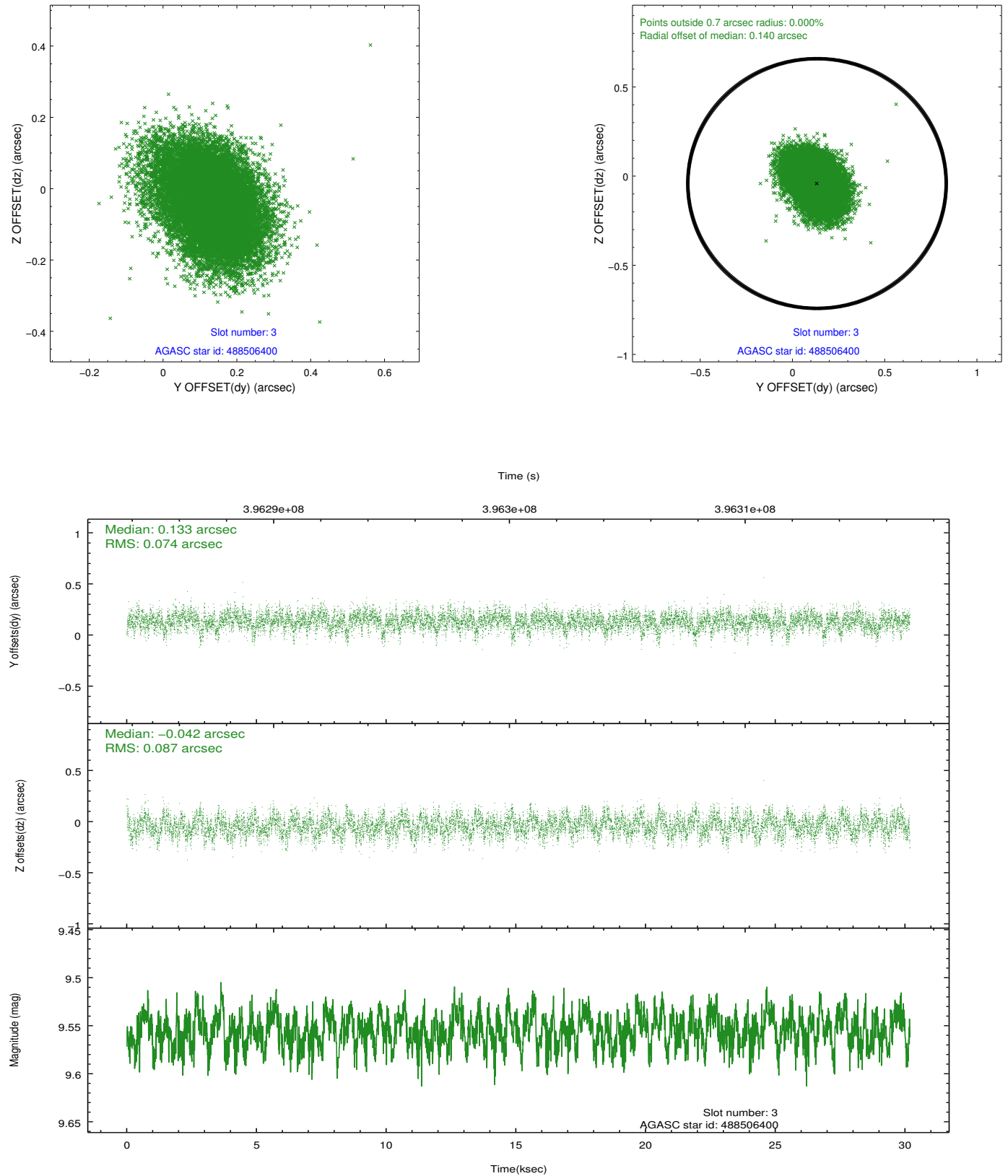


### Slot Statistics

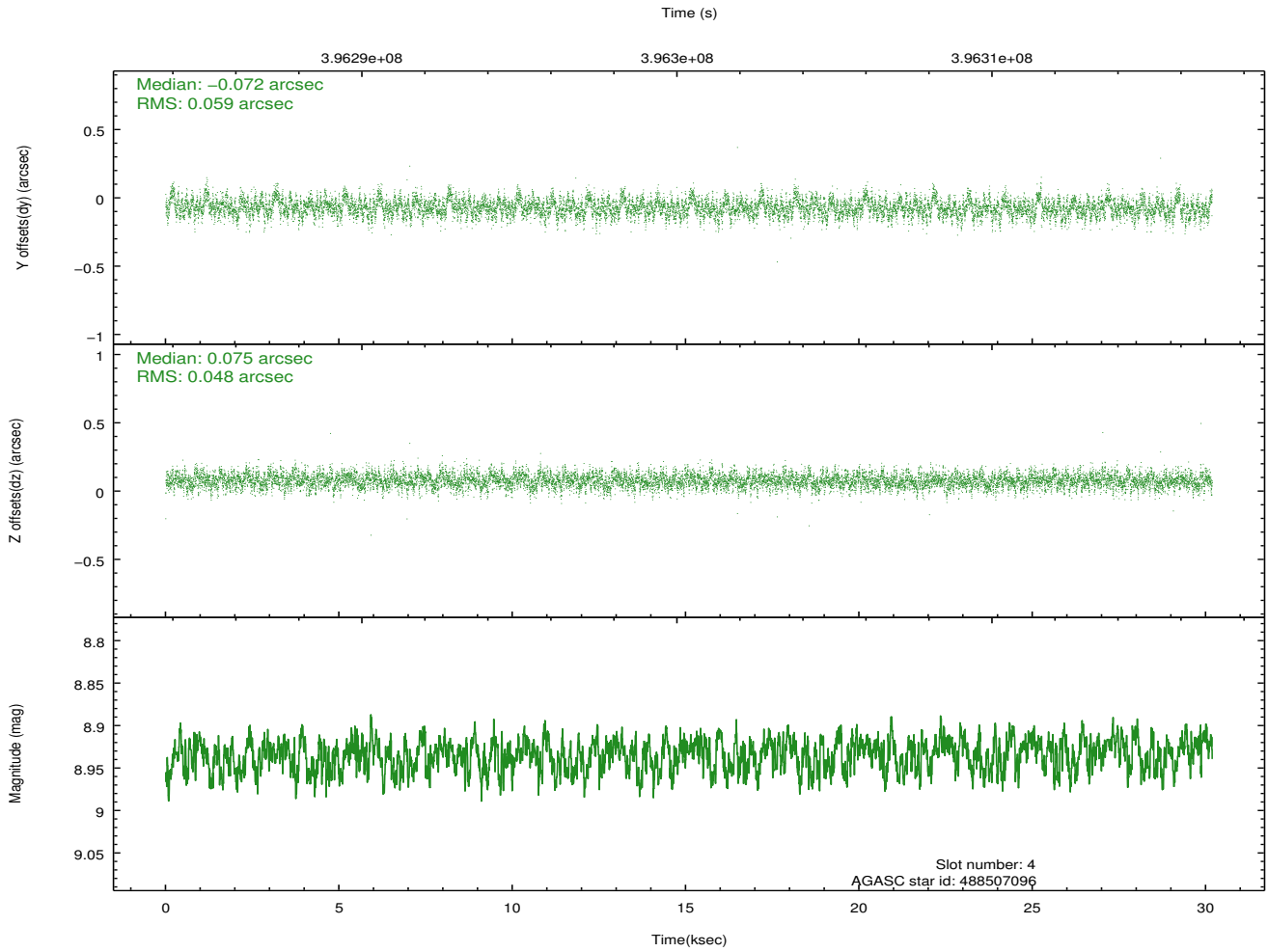
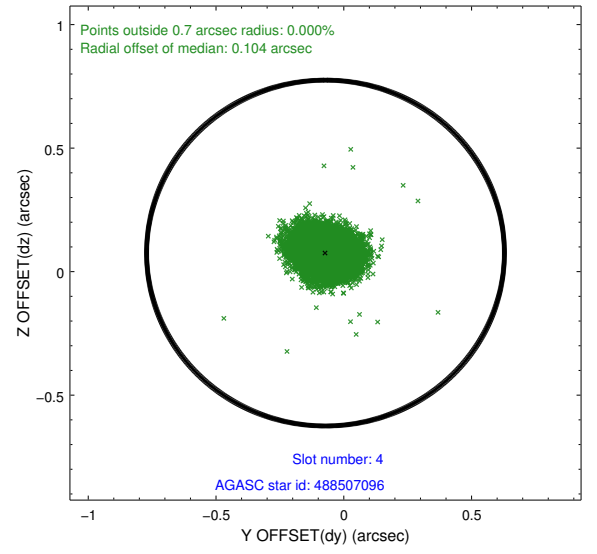
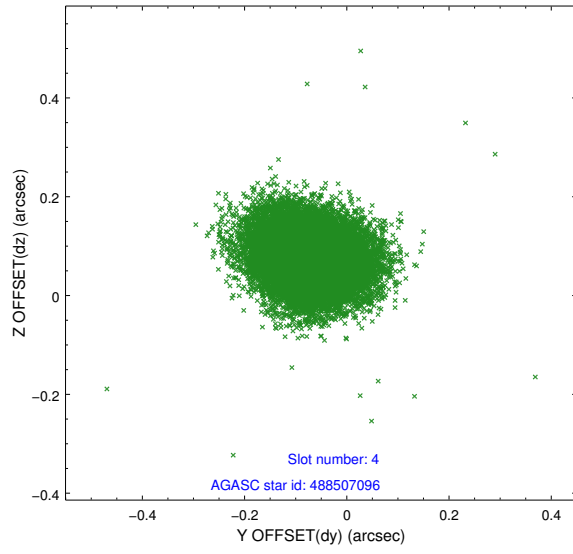
slot	status	id	mag	n_pts	med_dy	med_dz	dr1	dr2	ra	dec	mean_y	mean_z
0	FID	ACIS-S-2	6.86	7362	-0.061	-0.029	0.007	0.011	0.000000	0.000000	-768.71	-1739.27
1	FID	ACIS-S-4	6.95	7362	0.142	0.037	0.006	0.012	0.000000	0.000000	2144.80	169.12
2	FID	ACIS-S-5	6.98	7362	-0.112	0.000	0.007	0.012	0.000000	0.000000	-1821.45	162.95
3	GUIDE	488506400	9.55	14696	0.133	-0.042	0.121	0.200	65.102479	57.572622	438.62	-777.84
4	GUIDE	488507096	8.93	14707	-0.072	0.075	0.081	0.131	65.387964	57.745120	1193.30	-1122.02
5	GUIDE	488513832	9.20	14709	0.058	0.152	0.095	0.153	64.776874	57.090020	-1407.46	-671.75
6	GUIDE	488521400	6.09	14725	-0.114	-0.316	0.080	0.132	63.757480	57.460363	-678.76	1604.69
7	GUIDE	488375424	9.25	14708	-0.008	0.139	0.104	0.171	63.251876	57.054651	-2349.33	2163.35

## 2.4 Star Slots

### 2.4.1 Slot 3

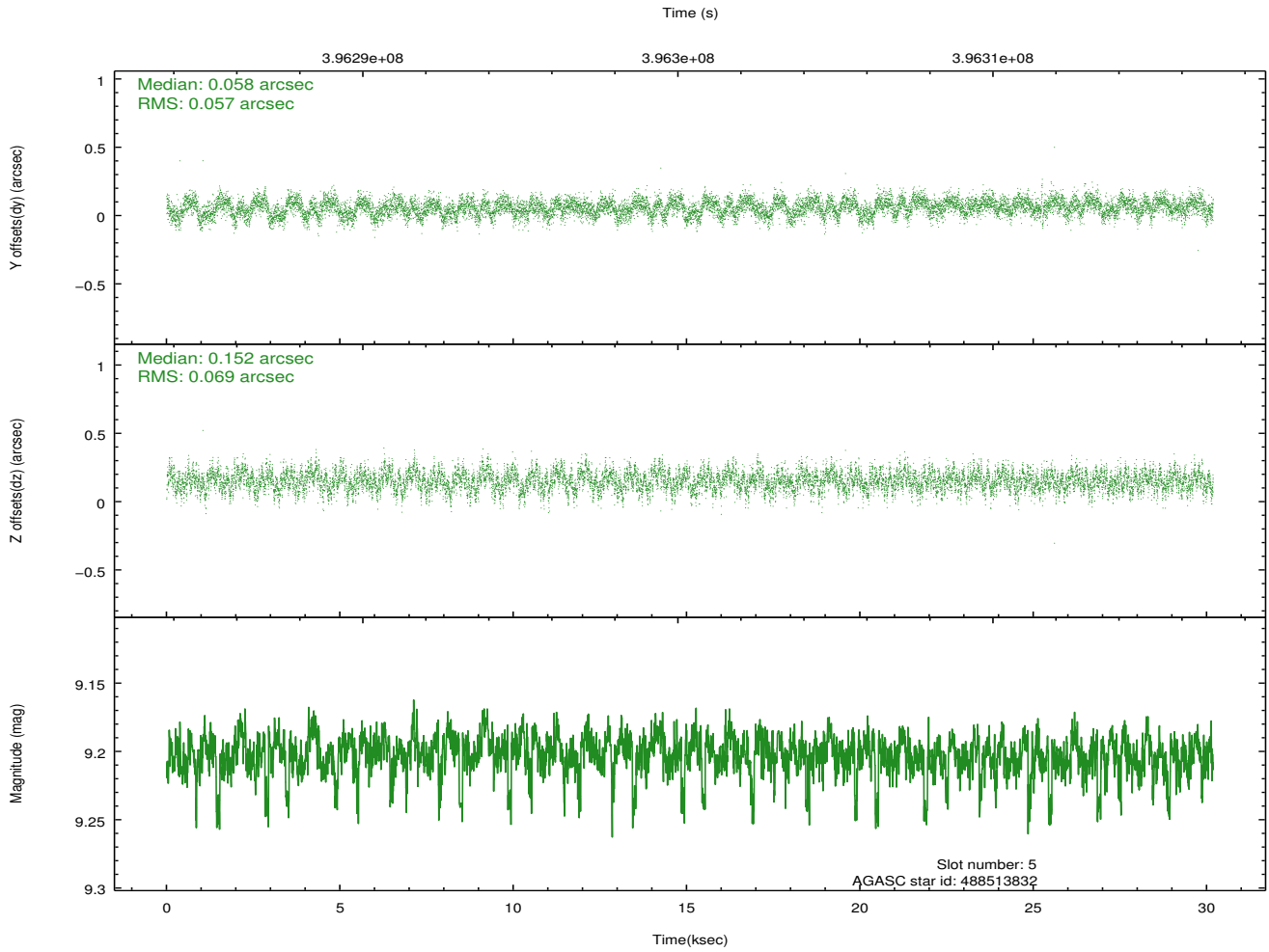
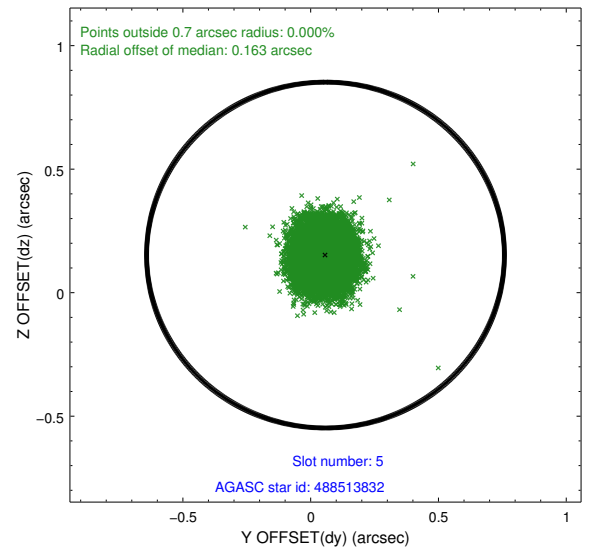
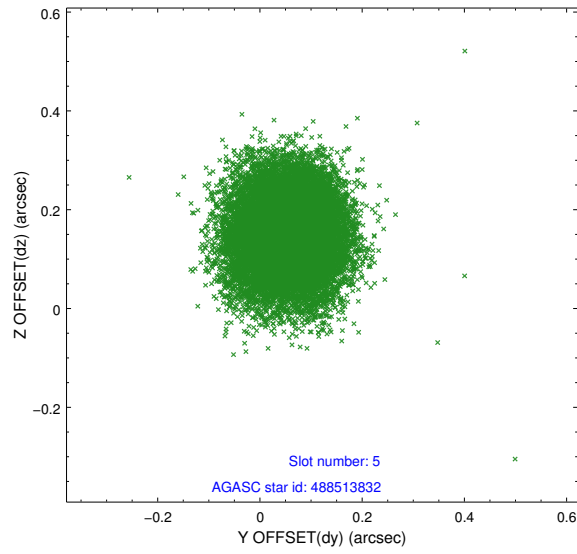


## 2.4.2 Slot 4

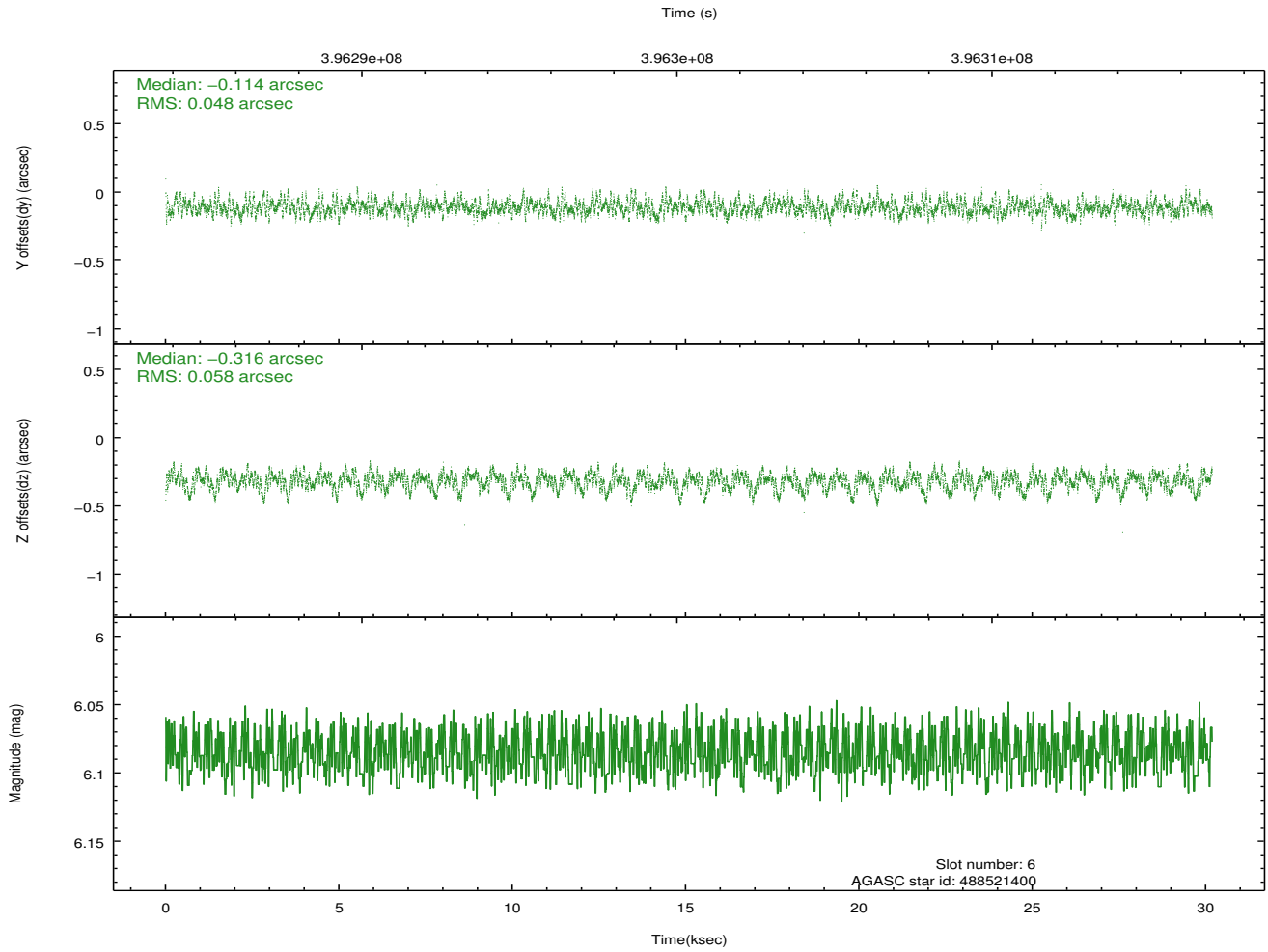
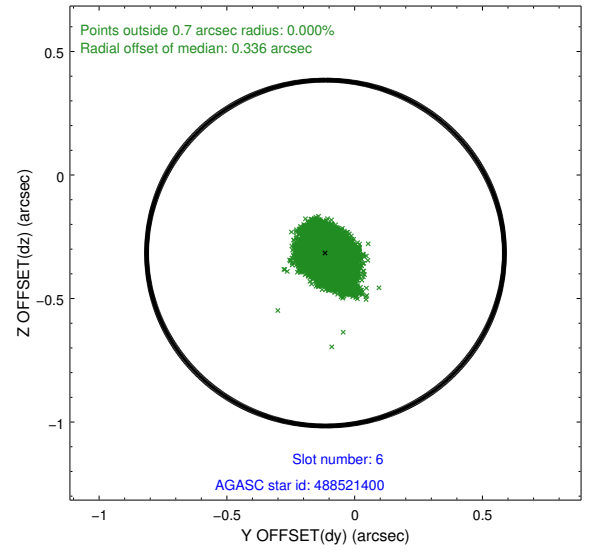
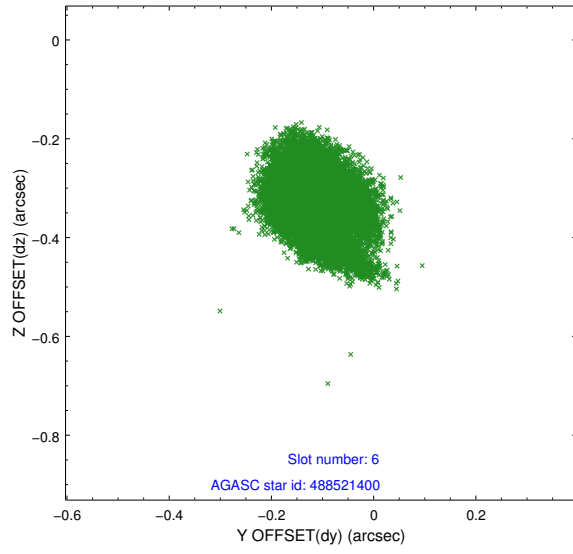




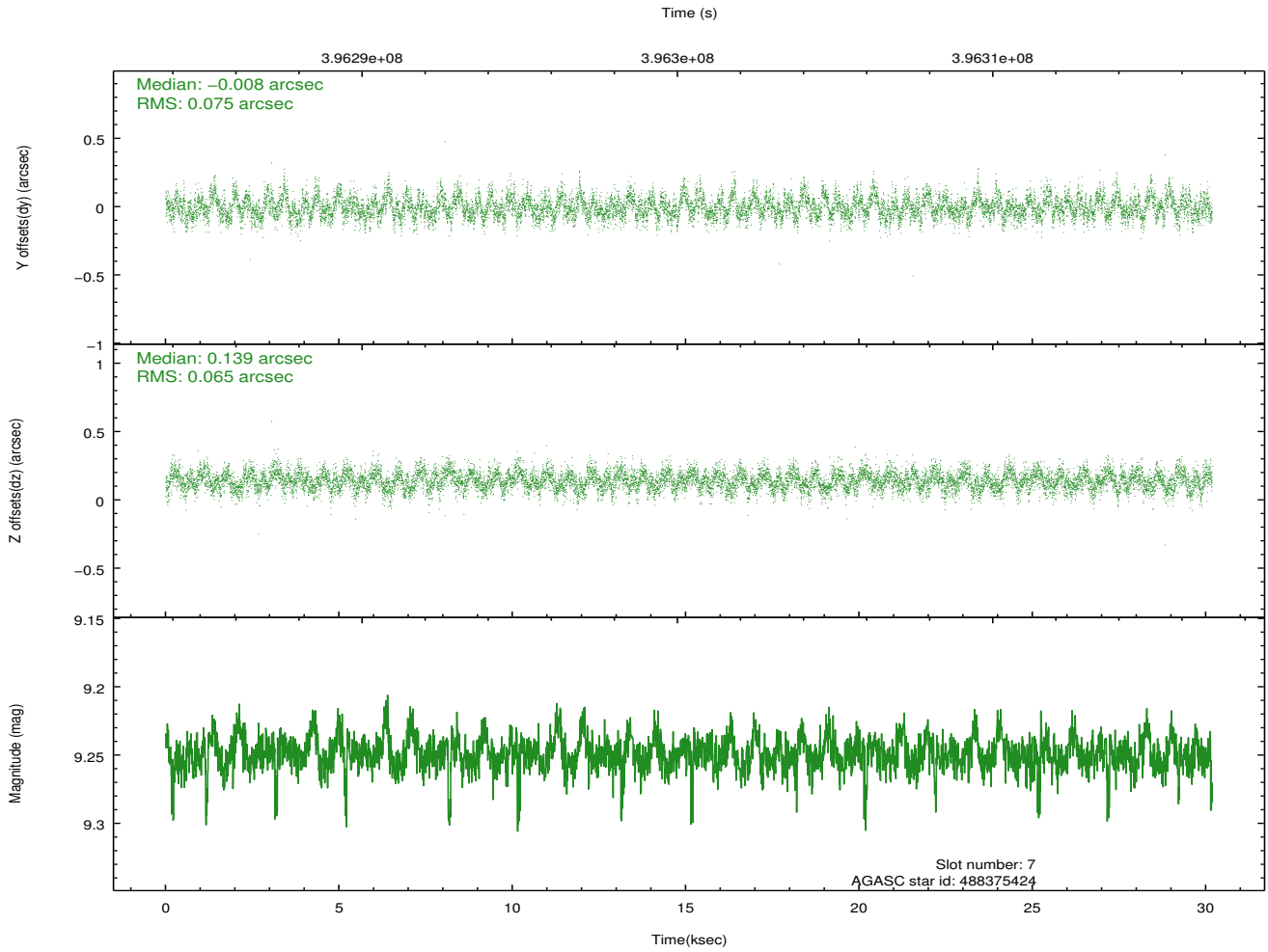
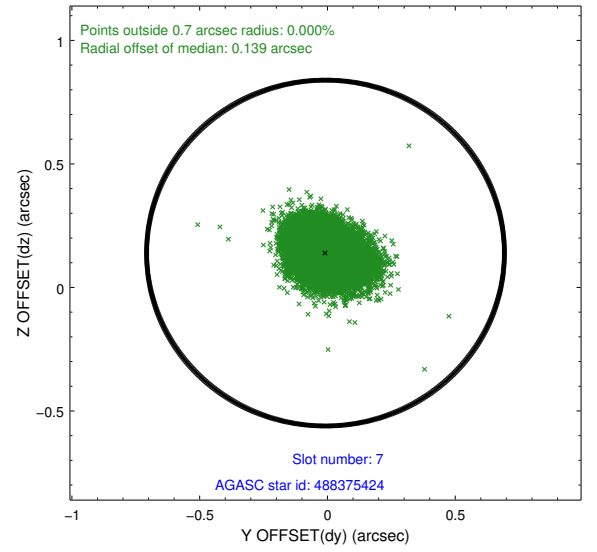
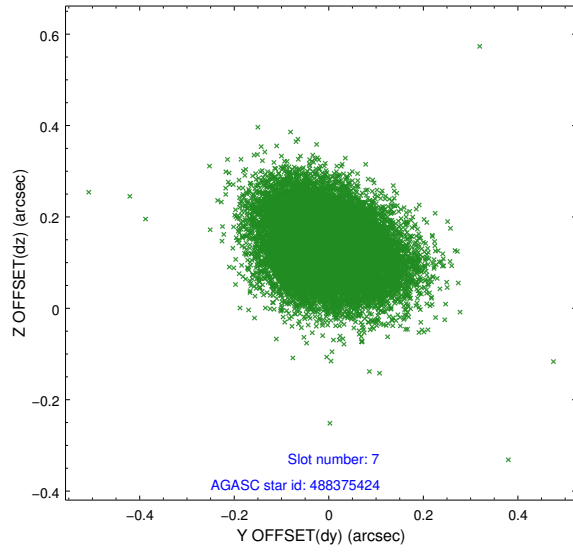
### 2.4.3 Slot 5



## 2.4.4 Slot 6

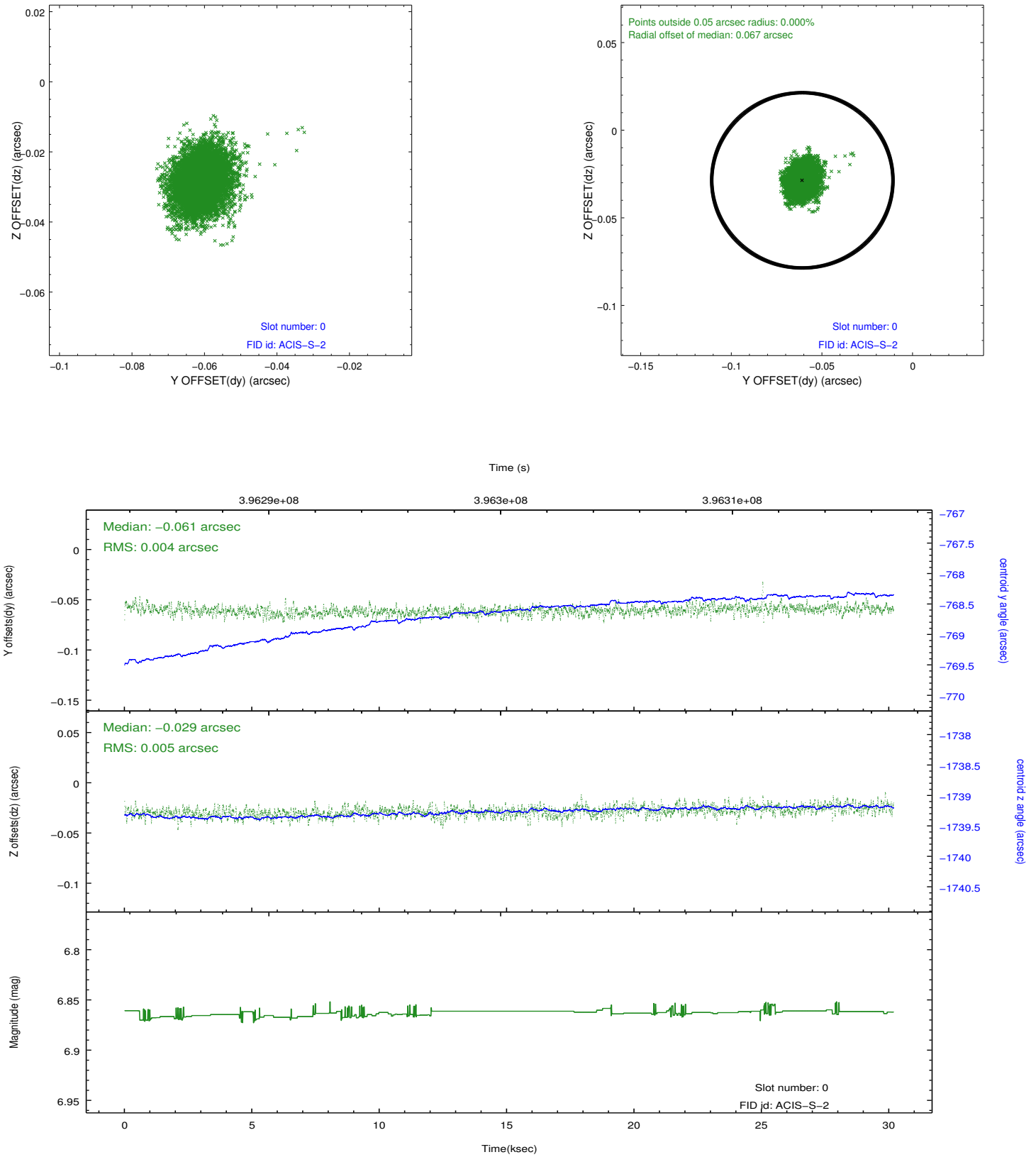


## 2.4.5 Slot 7

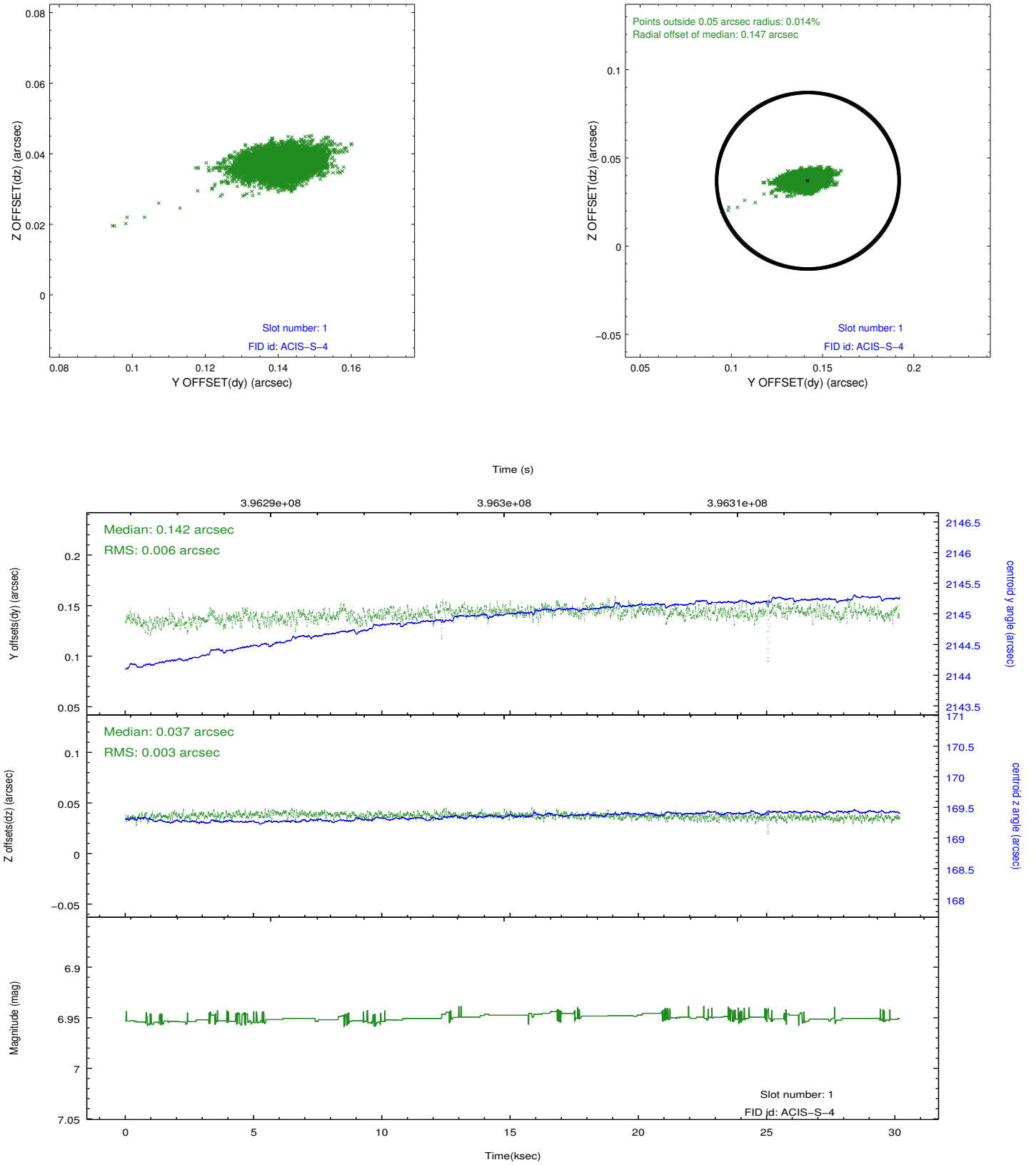


## 2.5 FID Slots

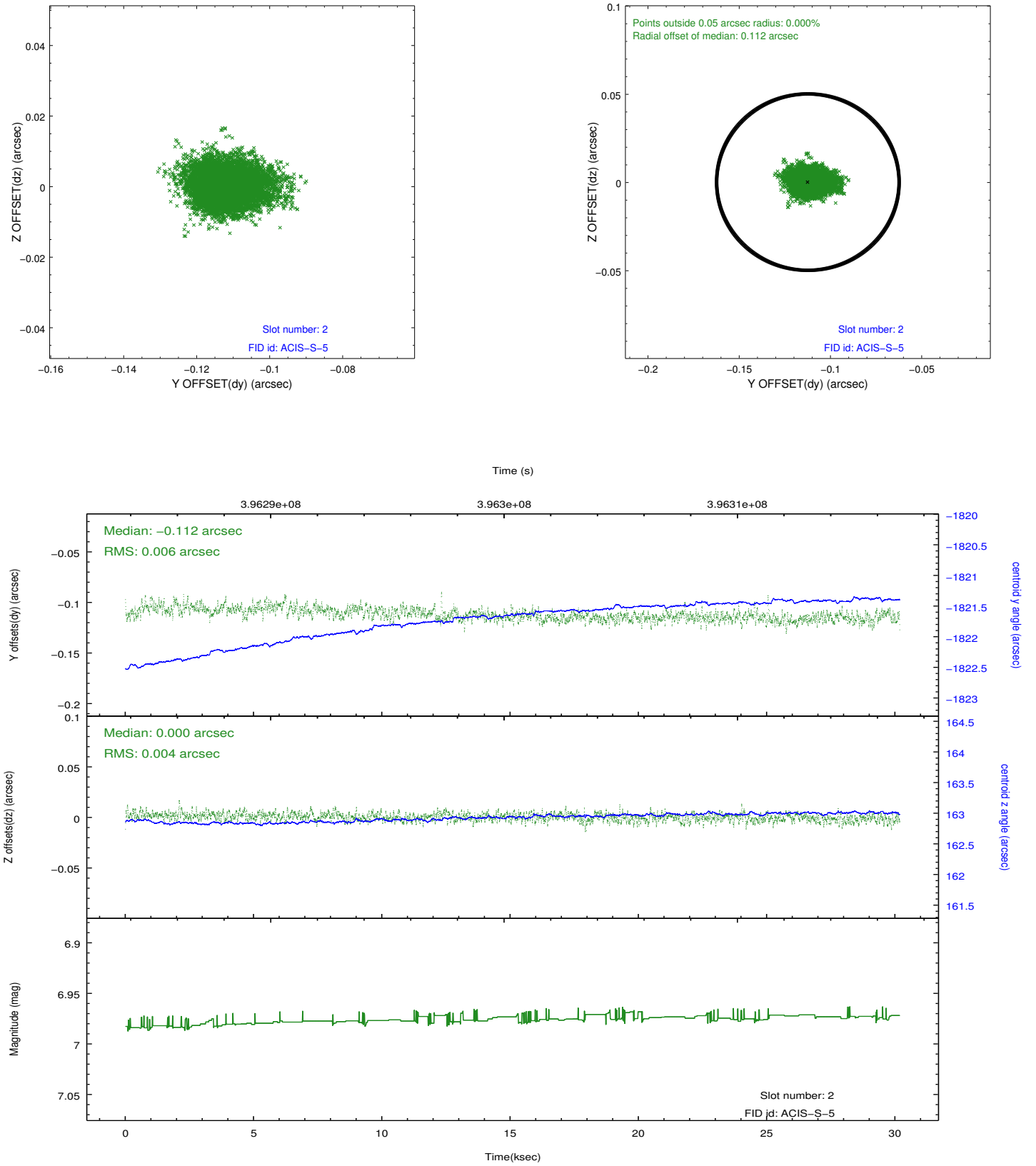
### 2.5.1 Slot 0



## 2.5.2 Slot 1



### 2.5.3 Slot 2



## **A Summary**

### **A.1 Status**

V&V Scientist	Jen Lauer
V&V Date (YYYY-MM-DD)	2012.07.09
V&V Edition	1
V&V Disposition and Status	OK
V&V Charge Time	30.009198211312

### **A.2 Comments**