

V&V Reference Report

L2 ASCDS Version : 8.4.5

Observation 12216 - L2 Version 2
Chandra X-Ray Center

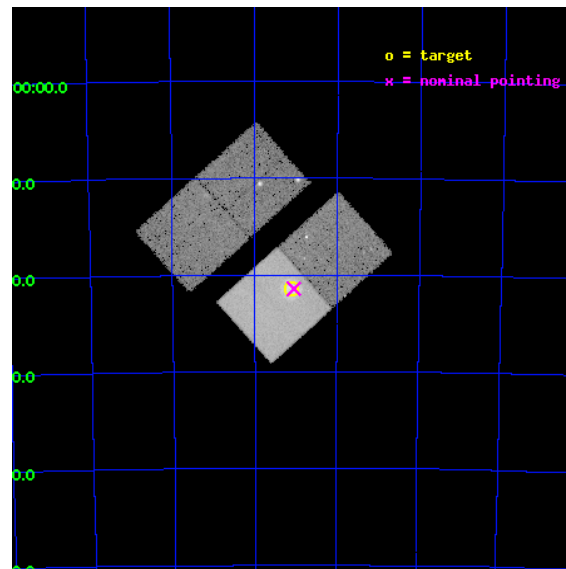
L2 Processing Date : Jun 26 2012

Contents

1	Front	2
2	OBI	3
2.1	OBI	3
2.1.1	Images	3
2.1.2	Bias	3
2.1.3	Parameters	4
2.1.4	Events	4
2.2	Compared Parameters	5
2.3	Aspect	6
2.4	Star Slots	9
2.4.1	Slot 3	9
2.4.2	Slot 4	10
2.4.3	Slot 5	11
2.4.4	Slot 6	12
2.4.5	Slot 7	13
2.5	FID Slots	14
2.5.1	Slot 0	14
2.5.2	Slot 1	15
2.5.3	Slot 2	16
A	Summary	17
A.1	Status	17
A.2	Comments	17

1 Front

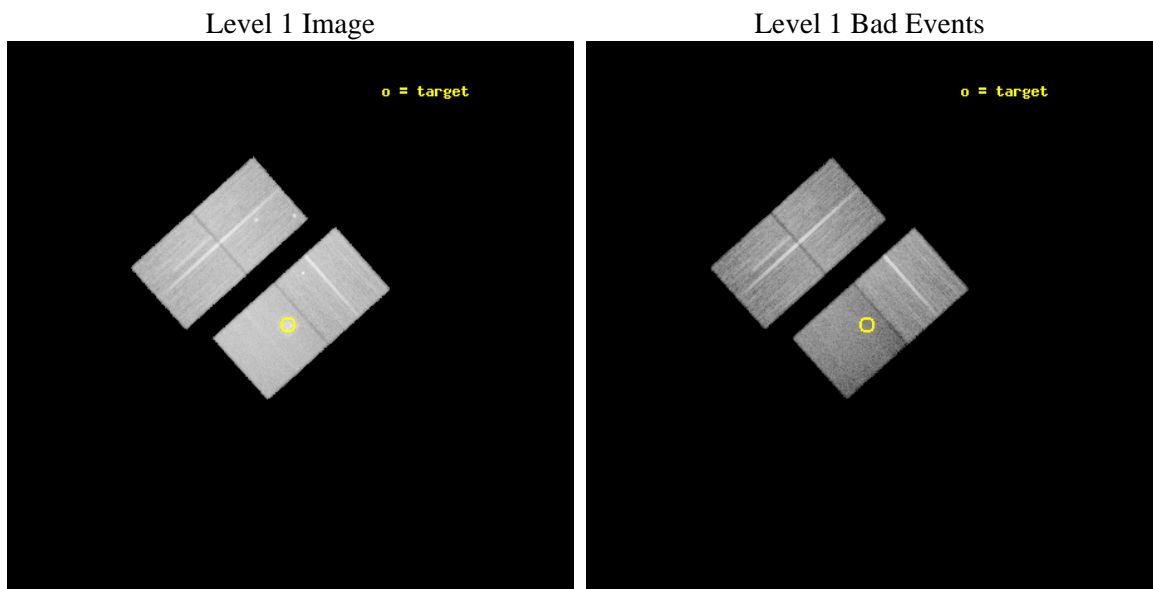
seq_num	501185	Sequence number
obs_id	12216	Observation id
title	A Detailed Study of the Aged O-Rich Supernova Remnant 0049-73.6	Pr
observer	DR. Sangwook Park	Principal investigator
object	SNR 0049-73.6	Source name
dtcycle	0	
cycle	P	events from which exps? Prim/Second/Both
ra_targ	12.779167	Observer's specified target RA [deg]
dec_targ	-73.358333	Observer's specified target Dec [deg]
ra_nom	12.76256156811	Nominal RA [deg]
dec_nom	-73.357486051016	Nominal Dec [deg]
roll_nom	138.1407071117	Nominal Roll [deg]
revision	2	Processing version of data
ontime	29050.100223422	Sum of GTIs [s]
livetime	28670.53927763	Livetime [s]
ontime2	29050.100223422	Sum of GTIs [s]
ontime3	29050.100223422	Sum of GTIs [s]
ontime6	29043.818223059	Sum of GTIs [s]
ontime7	29050.100223422	Sum of GTIs [s]
l2events	168630	Number of level 2 events



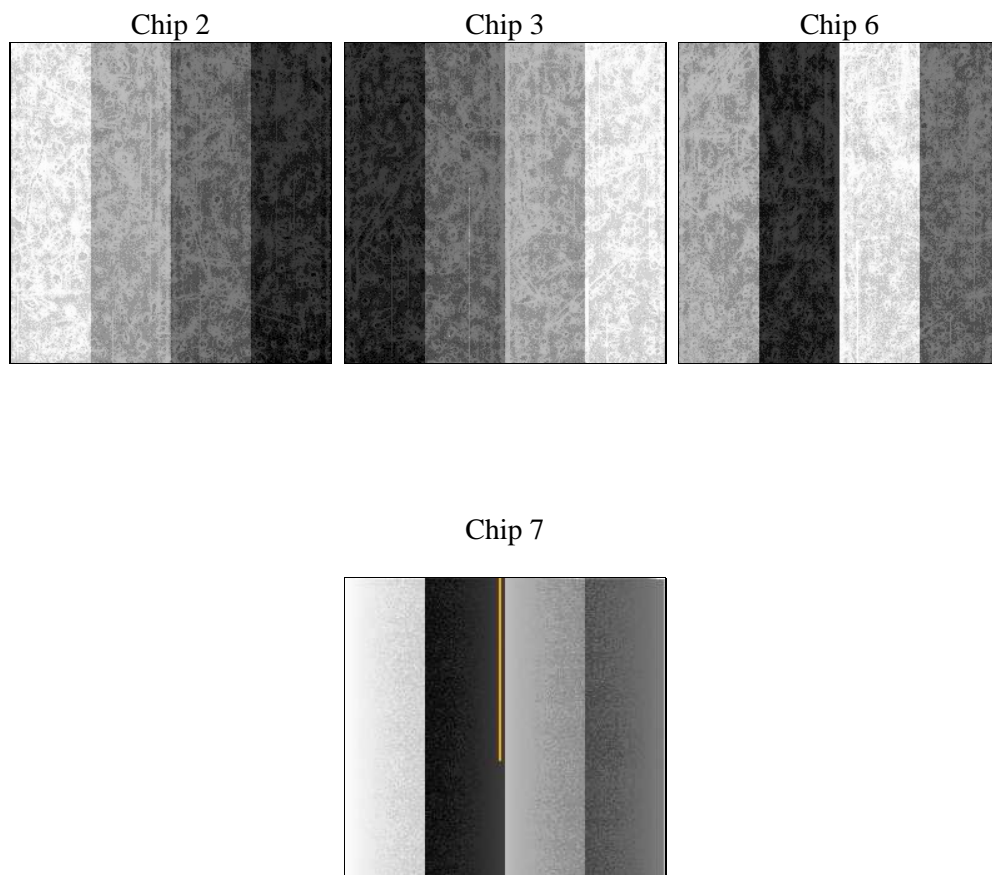
2 OBI

2.1 OBI

2.1.1 Images



2.1.2 Bias



2.1.3 Parameters

obi_num	0	Obi number	sched_exp_time	29000.000000	[s] Scheduled observation exposure time
ascdsver	8.4.5	Processing system revision	ontime	29050.100223422	Sum of GTIs [s]
caldsver	4.4.10	 	ontime2	29050.100223422	Sum of GTIs [s]
date	2012-06-26T02:45:06	Date and time of file creation	ontime3	29050.100223422	Sum of GTIs [s]
revision	2	Processing version of data	ontime6	29043.818223059	Sum of GTIs [s]
			ontime7	29050.100223422	Sum of GTIs [s]
			l1events	834417	Number of level 1 events

2.1.4 Events

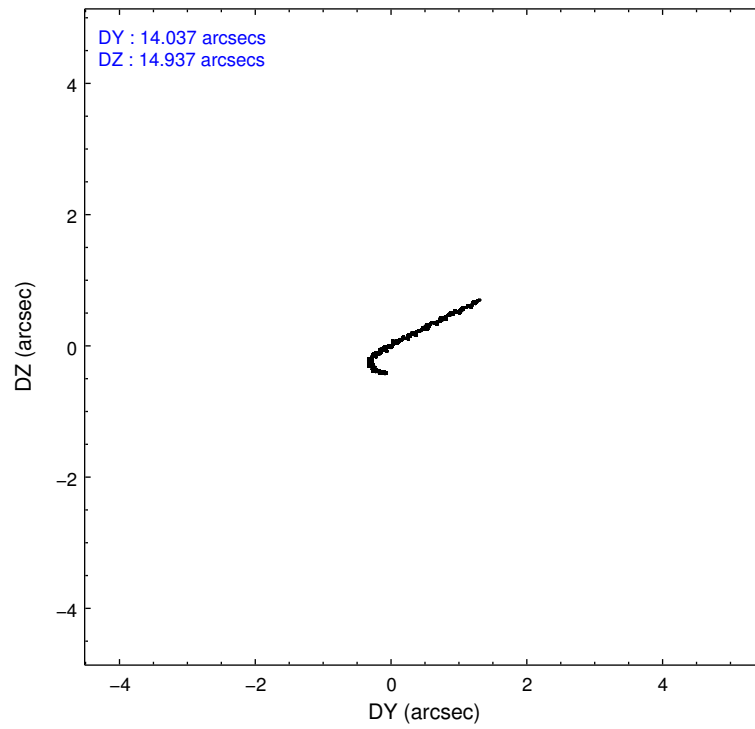
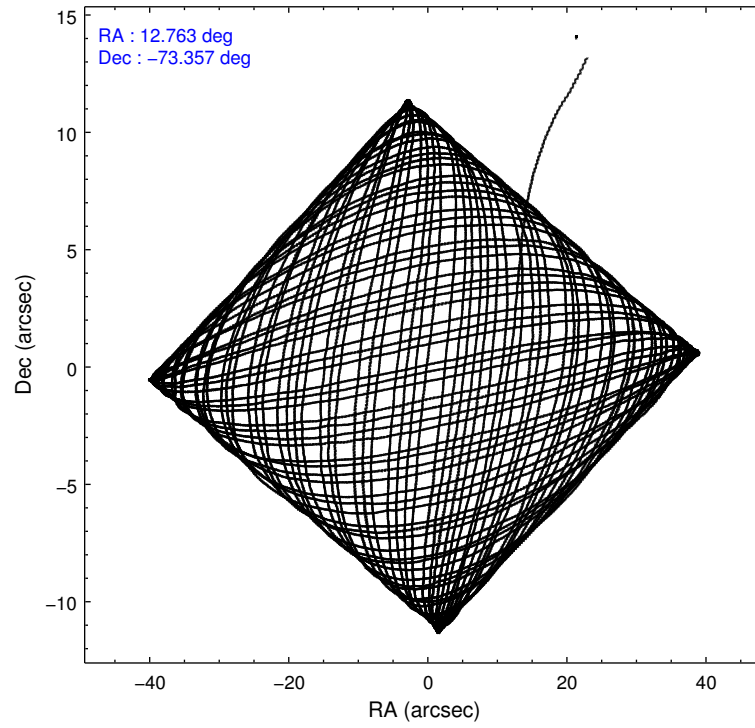
	ccd 2	ccd 3	ccd 6	ccd 7
level 1 events	206699	194238	210283	223197
rejected events	183032	174009	186032	109433
rejected %	88%	89%	88%	49%

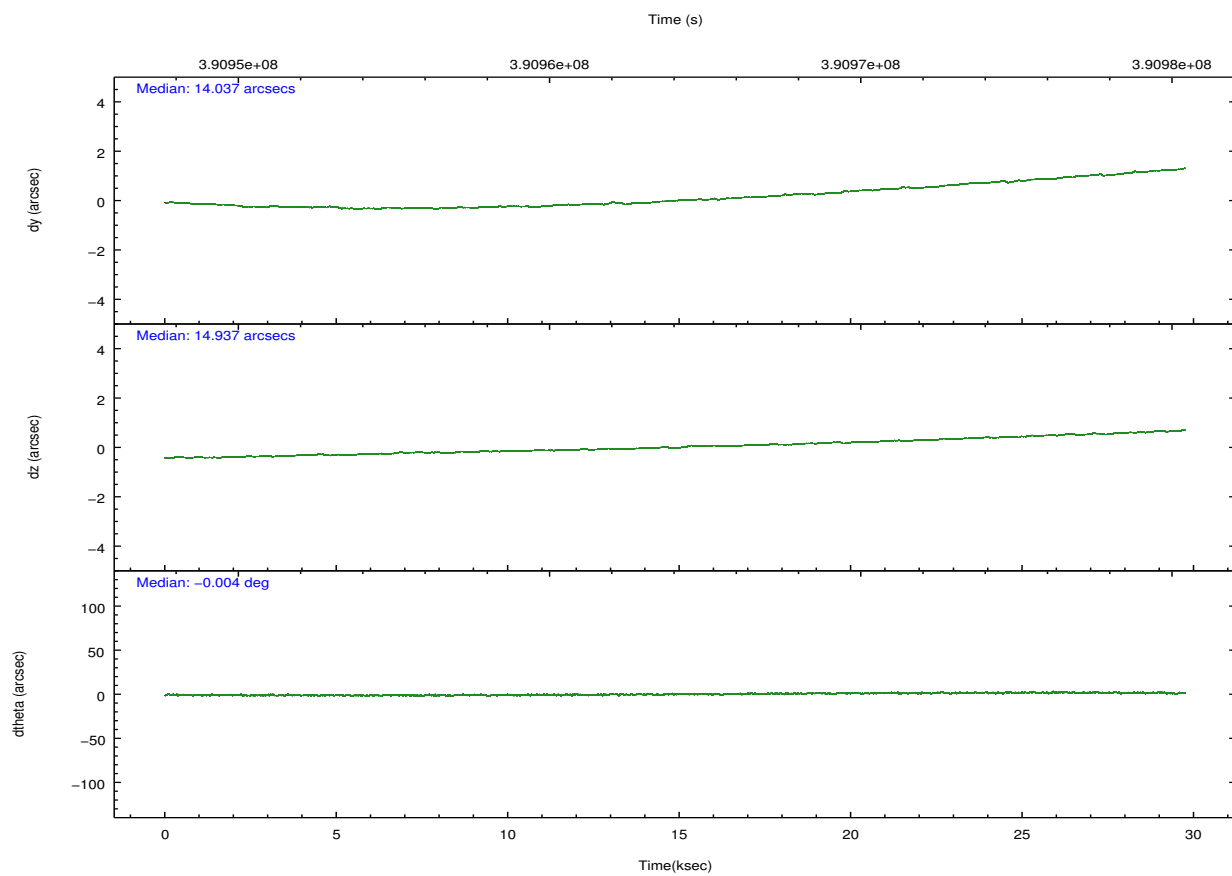
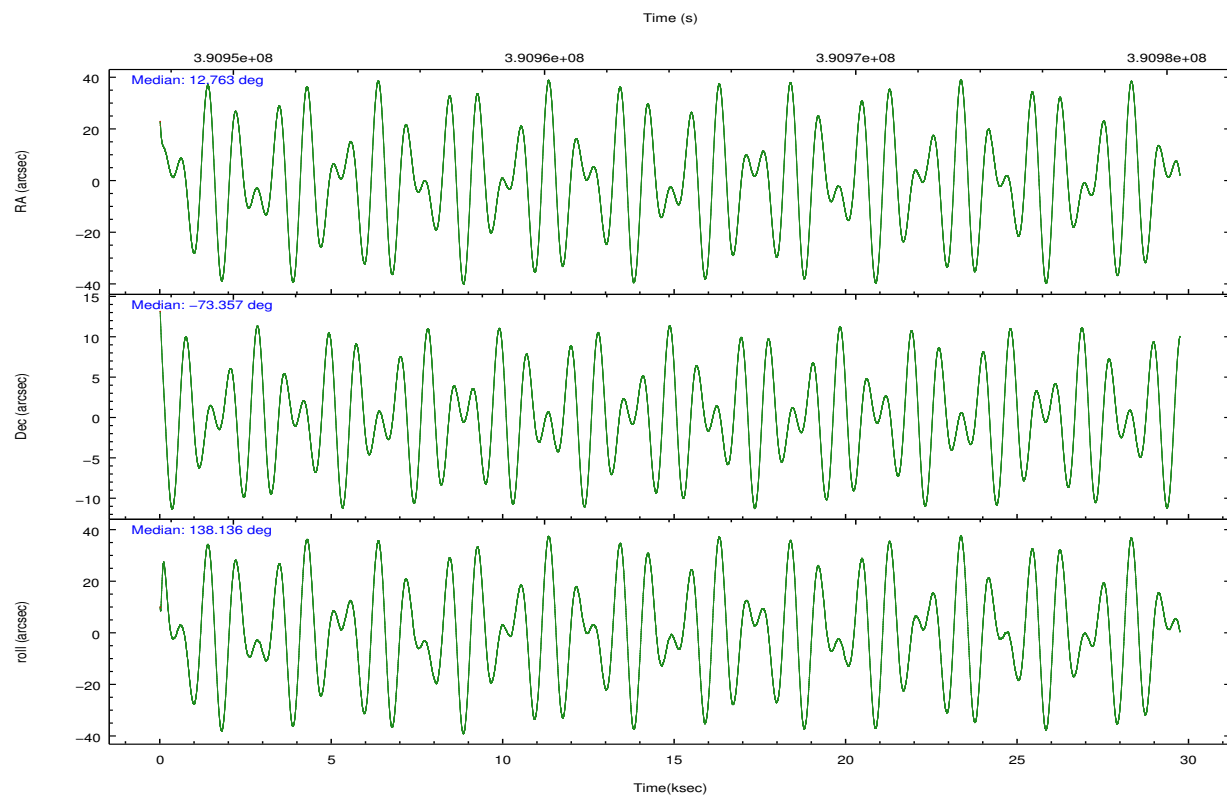
	ccd 2	ccd 3	ccd 6	ccd 7
grade 0 events	9546	7413	9562	13800
	4%	3%	4%	6%
grade 1 events	134	110	102	312
	0%	0%	0%	0%
grade 2 events	5550	4408	5288	24959
	2%	2%	2%	11%
grade 3 events	2296	2274	2330	10648
	1%	1%	1%	4%
grade 4 events	2337	2152	2420	10600
	1%	1%	1%	4%
grade 5 events	6522	7630	7949	22377
	3%	3%	3%	10%
grade 6 events	3939	3985	4655	53763
	1%	2%	2%	24%
grade 7 events	176375	166266	177977	86738
	85%	85%	84%	38%

2.2 Compared Parameters

Parameter	Planned	Actual	Parameter	Planned	Actual
Instrument	ACIS	ACIS	Obspar format version number	7	7
Detector	ACIS-2367	ACIS-2367	Obspar file type	PREDICTED	ACTUAL
Grating	NONE	NONE	Obspar update status	NONE	UPDATED
Data mode	VFAINT	VFAINT	Number of optional ACIS chips dropped	0	0
Observation mode	POINTING	POINTING	On-chip summing requested	N	N
[deg] Pointing RA	12.856233	12.76256156811007	Subarray requested	NONE	NONE
[deg] Pointing Dec	-73.362708	-73.35748605101618	Alternating exposures requested	N	N
[deg] Pointing Roll	138.073835	138.1407071116998	[s] Primary exposure time	0.000000	3.1
[mm] SIM focus pos	-0.684267	-0.6828225247311905			
[mm] SIM defocus	0	0.001444936568705701			
[mm] SIM translation stage pos	-190.132523	-190.1400660498719			
[mm] SIM translation stage offset	0	0.00754346686406393			
[s] Observation start time (MET)	390949902.184000	390948308.69616			
Observation start date	2010-05-22T21:10:36	2010-05-22T20:45:08			
[s] Observation end time (MET)	390978902.184000	390979445.12275			
Observation end date	2010-05-23T05:13:56	2010-05-23T05:24:05			
Read mode	TIMED	TIMED			

2.3 Aspect



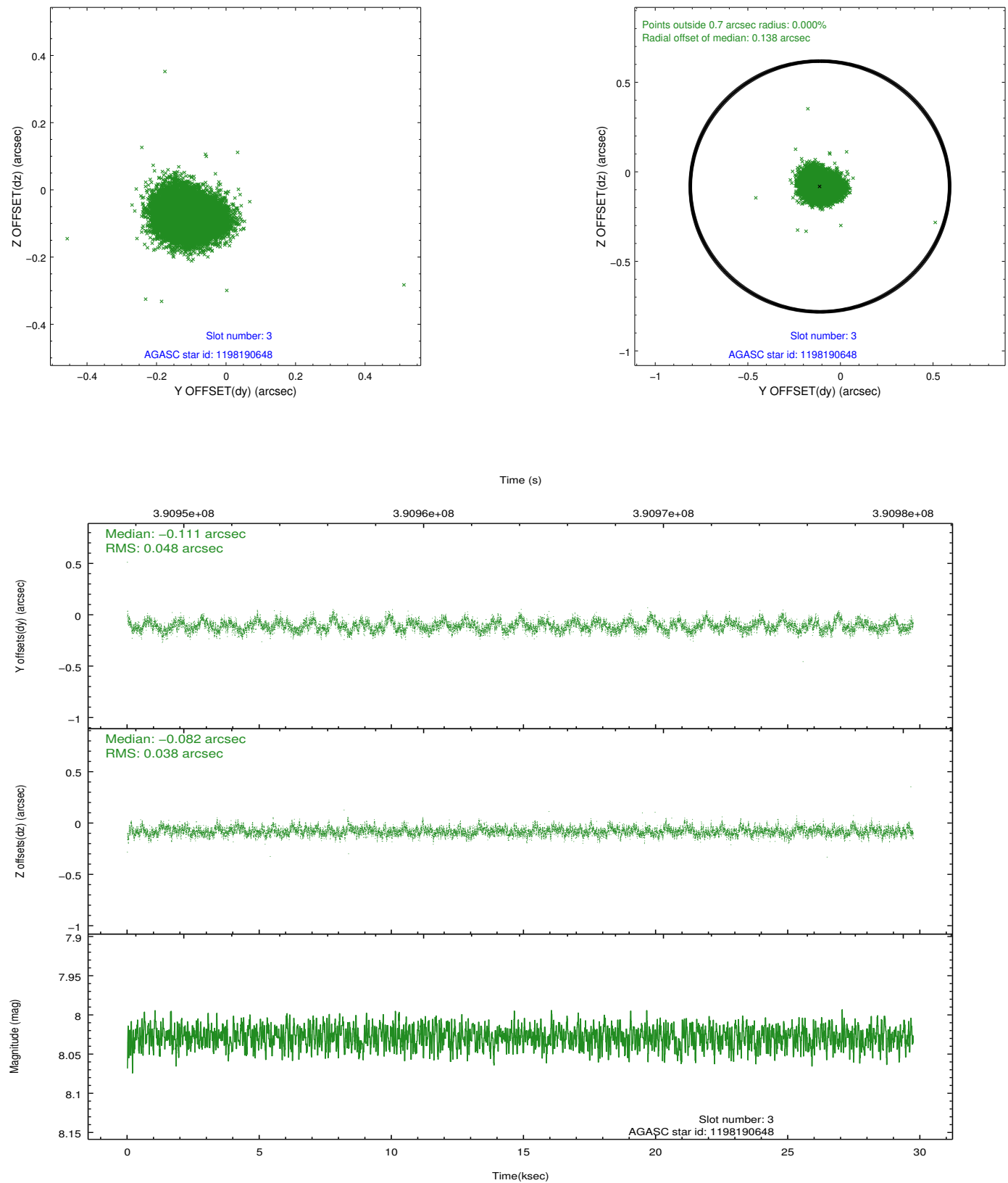


Slot Statistics

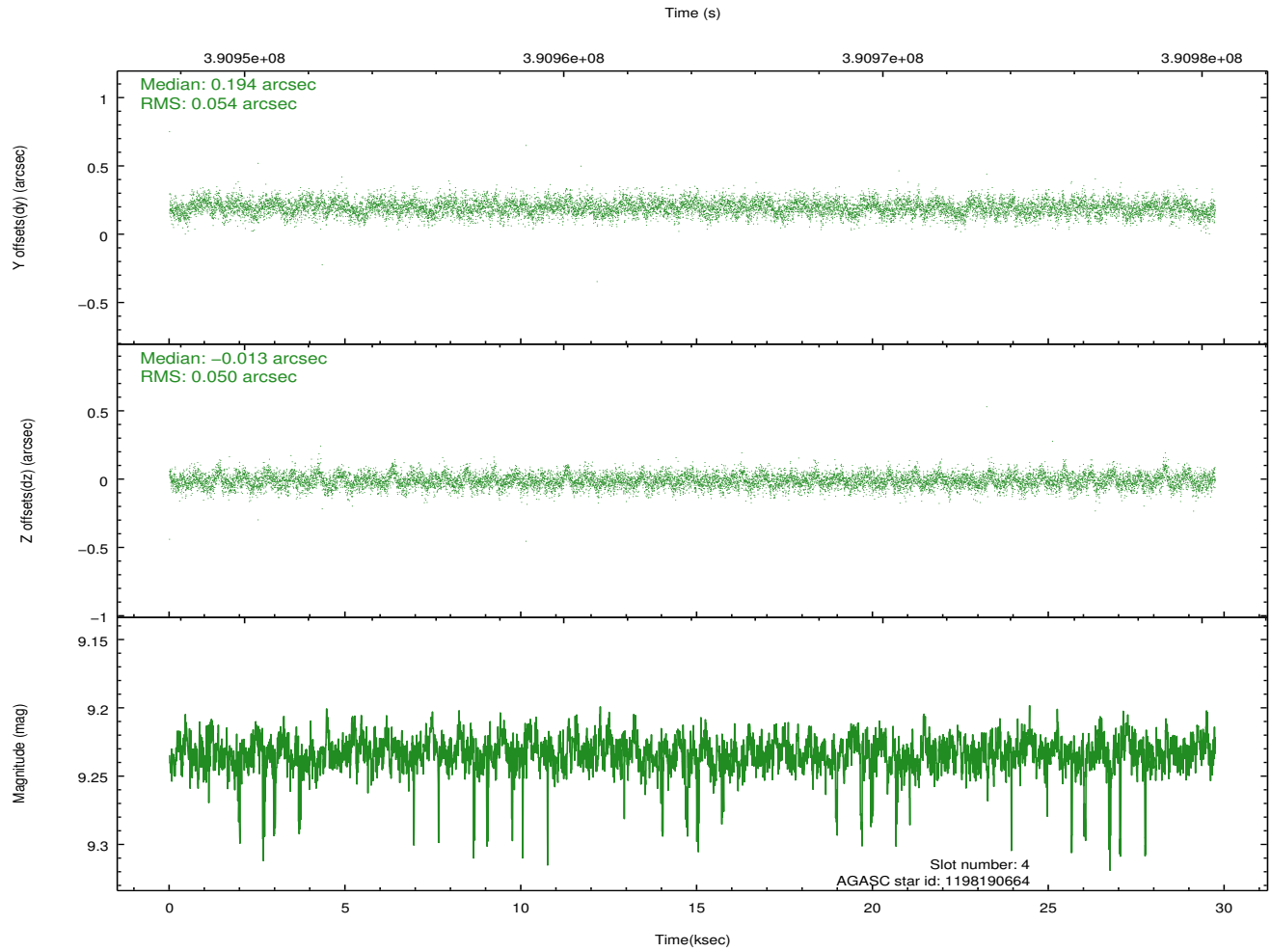
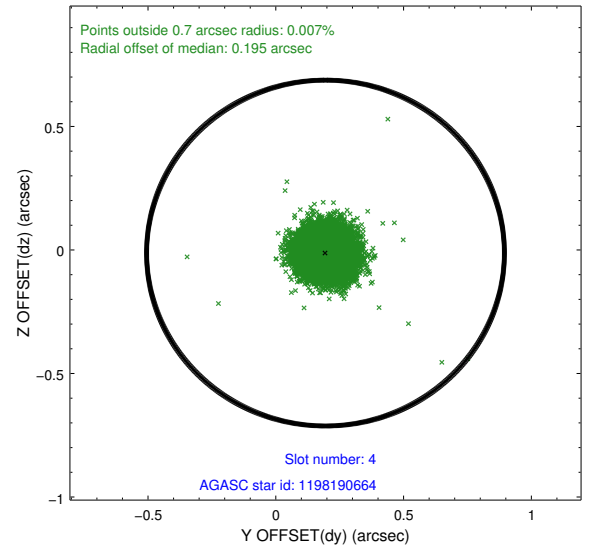
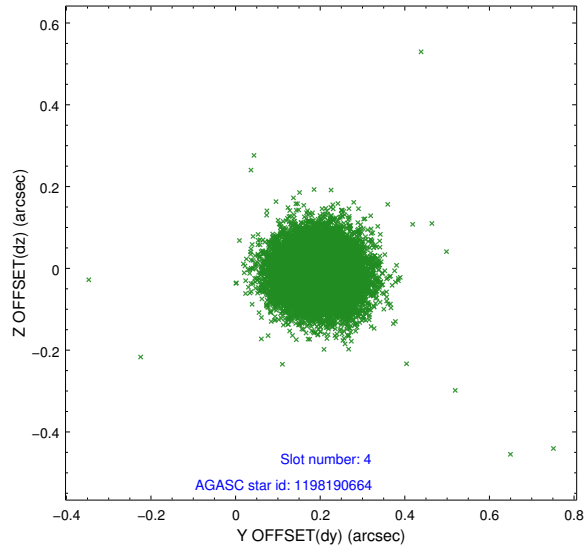
slot	status	id	mag	n_pts	med_dy	med_dz	dr1	dr2	ra	dec	mean_y	mean_z
0	FID	ACIS-S-1	6.98	7254	0.080	0.008	0.020	0.049	0.000000	0.000000	928.90	-1732.01
1	FID	ACIS-S-2	6.91	7254	-0.117	-0.047	0.009	0.014	0.000000	0.000000	-767.16	-1736.65
2	FID	ACIS-S-6	7.13	7254	0.015	0.045	0.019	0.038	0.000000	0.000000	394.52	809.31
3	GUIDE	1198190648	8.03	14504	-0.111	-0.082	0.065	0.105	12.344115	-73.478663	109.69	662.83
4	GUIDE	1198190664	9.23	14479	0.194	-0.013	0.077	0.125	14.057016	-73.825958	-2018.24	445.44
5	GUIDE	1198191824	9.33	14431	0.008	-0.011	0.126	0.202	11.519918	-73.478175	729.94	1234.86
6	GUIDE	1198192408	9.41	14496	-0.156	0.168	0.103	0.168	12.860639	-72.678863	1641.71	-1834.19
7	GUIDE	1198192456	8.58	14502	0.057	-0.058	0.076	0.121	13.422921	-73.869405	-1641.84	980.42

2.4 Star Slots

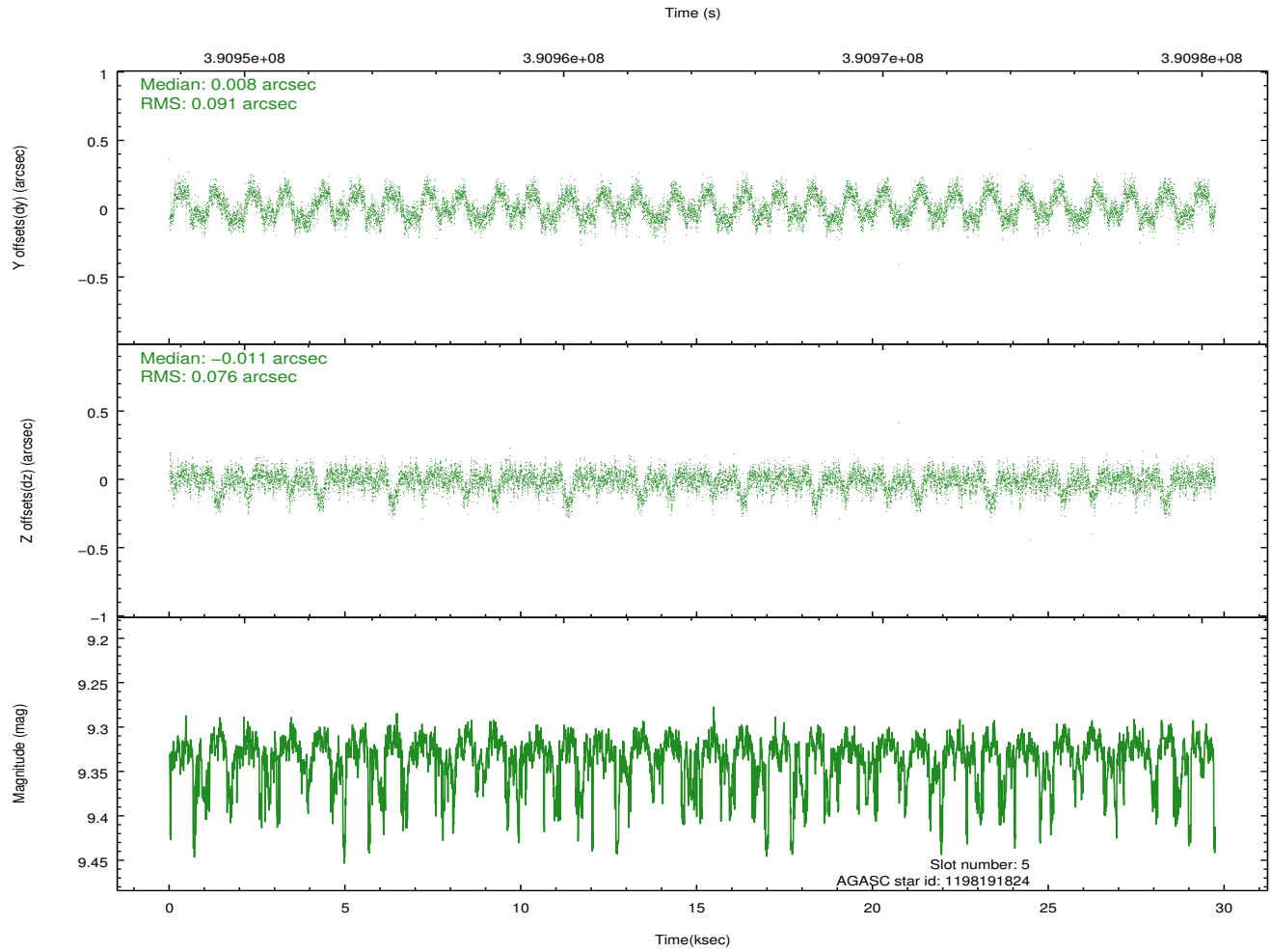
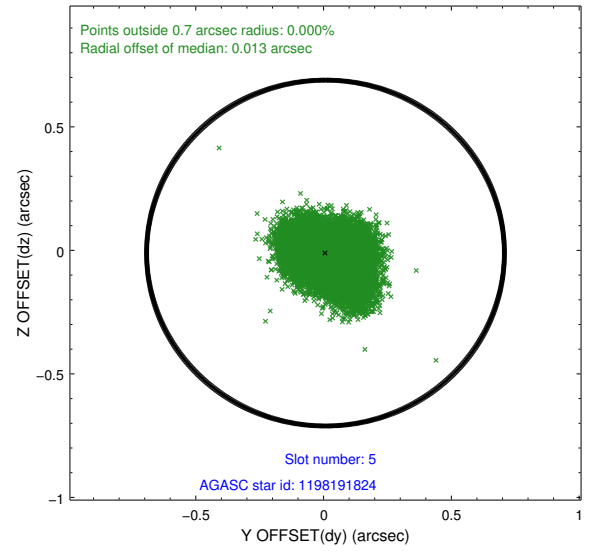
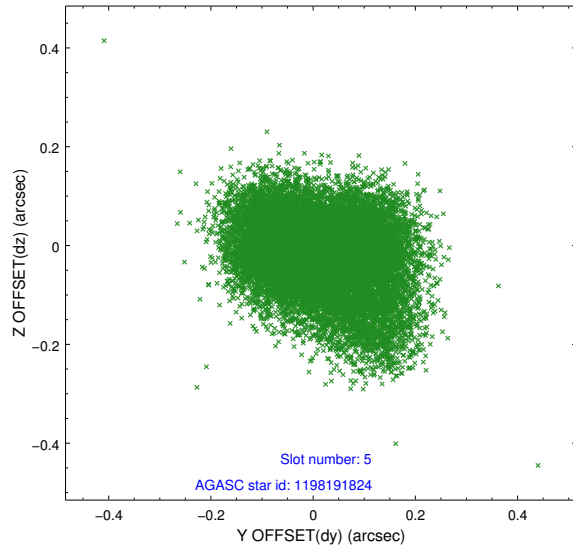
2.4.1 Slot 3



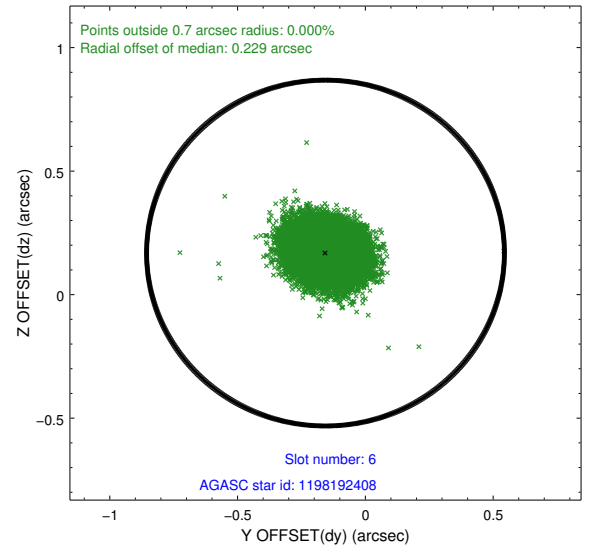
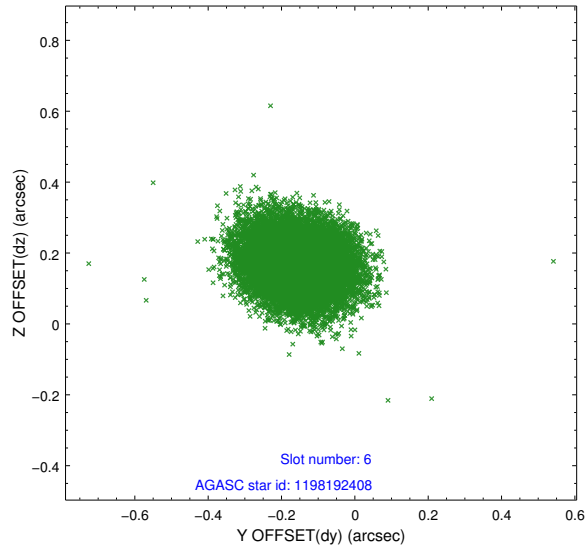
2.4.2 Slot 4



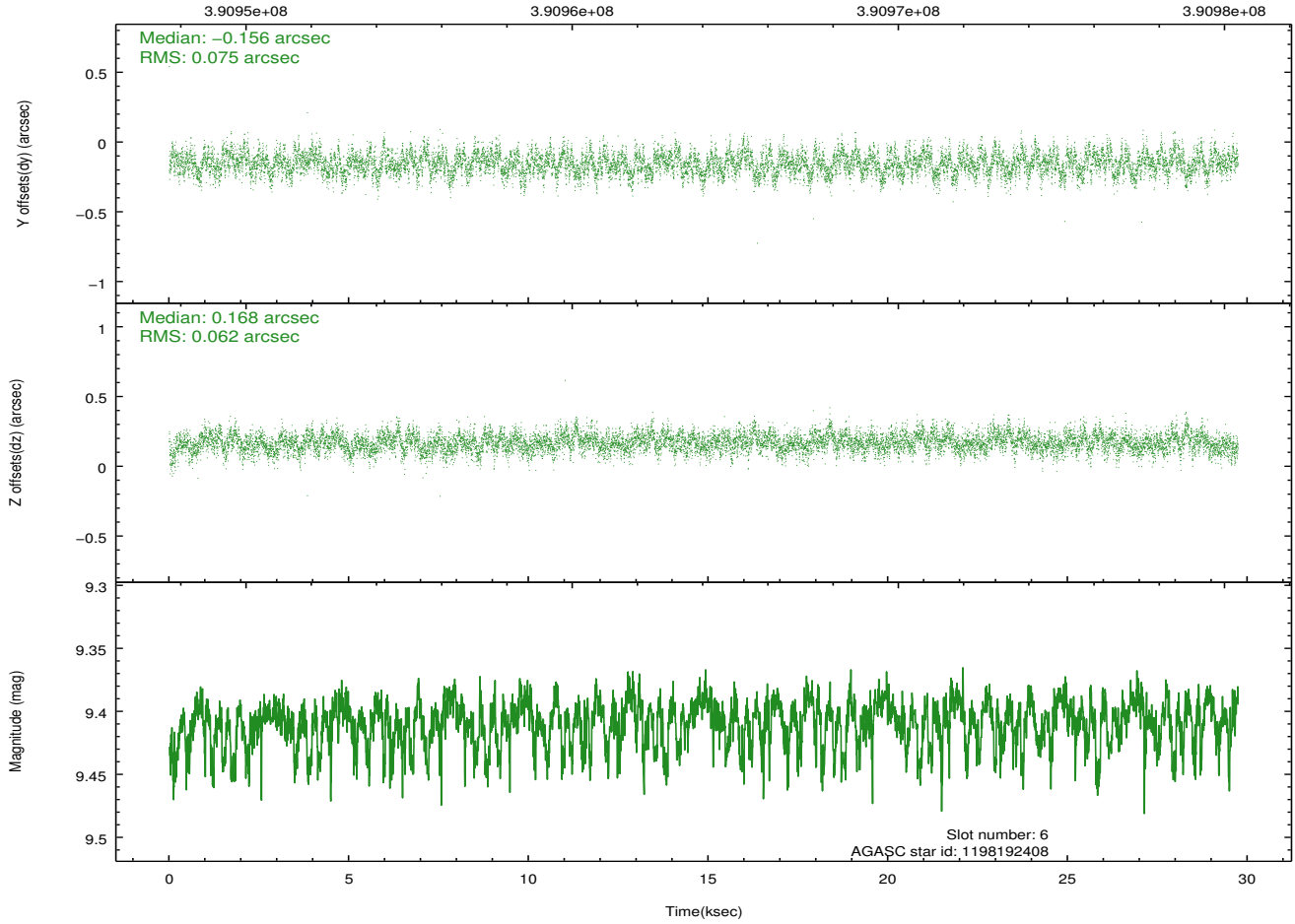
2.4.3 Slot 5



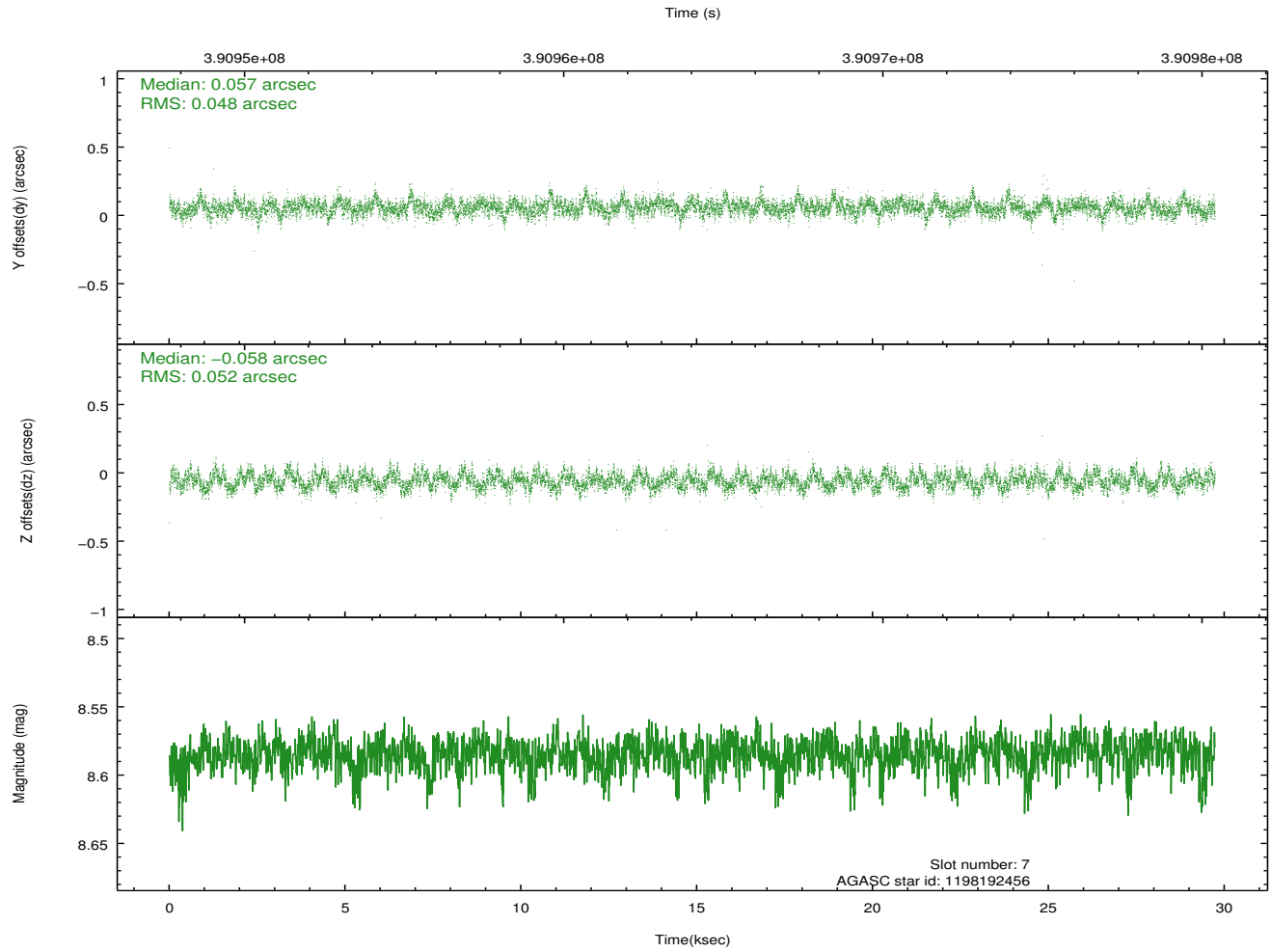
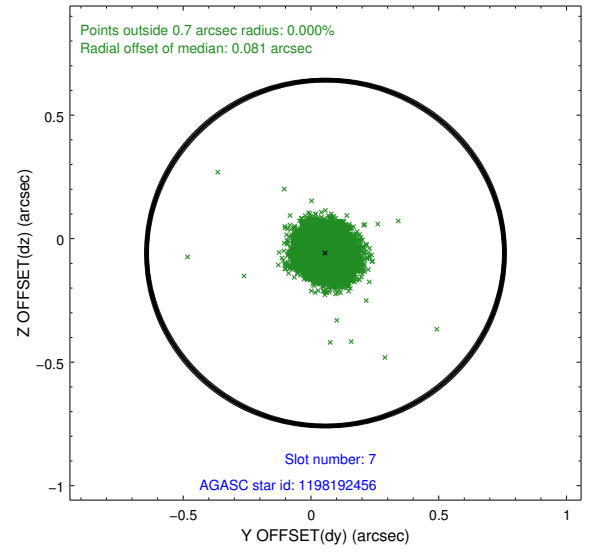
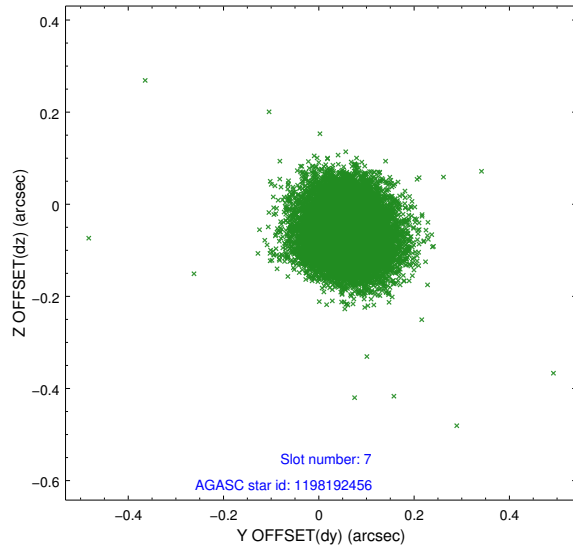
2.4.4 Slot 6



Time (s)

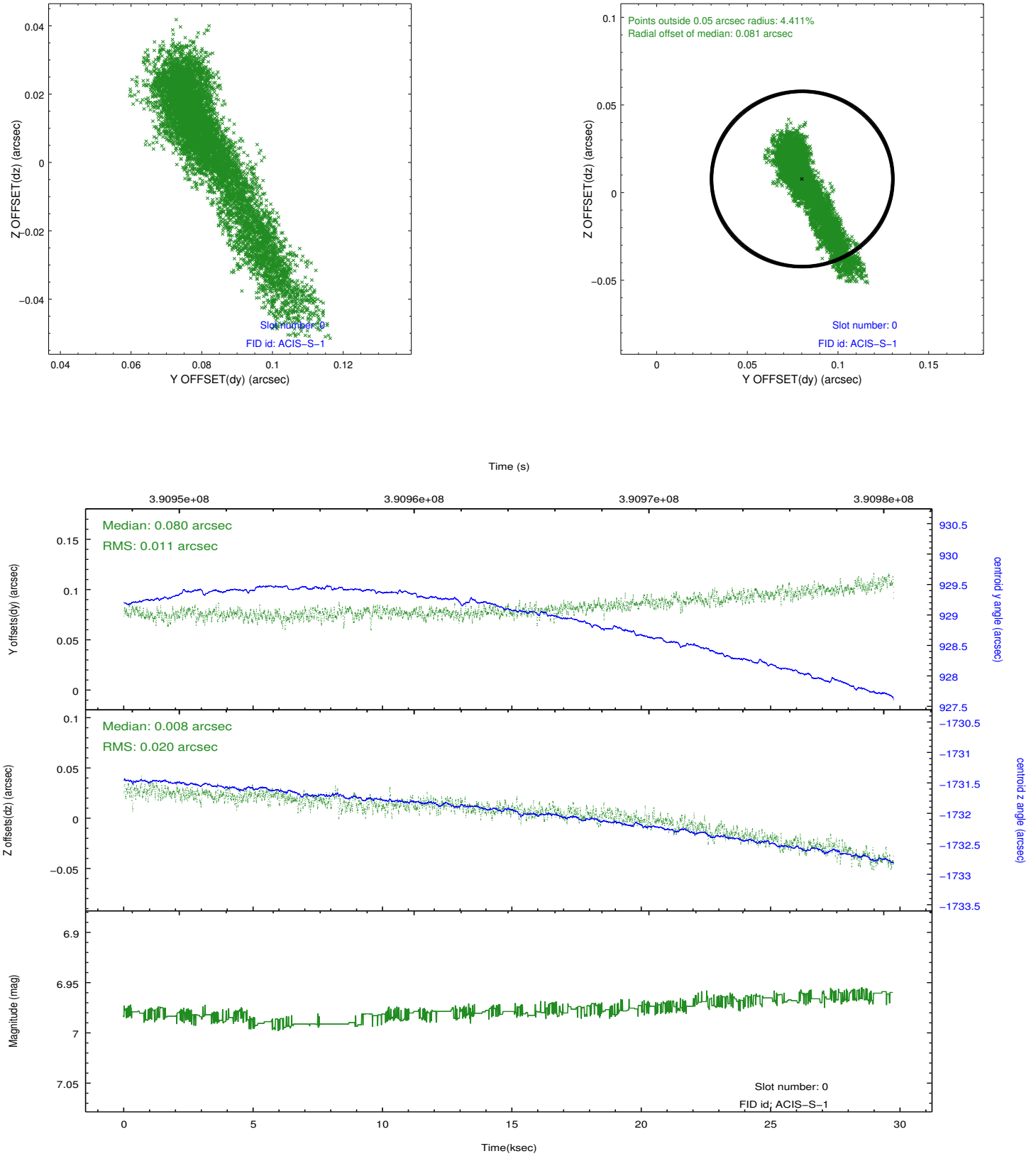


2.4.5 Slot 7

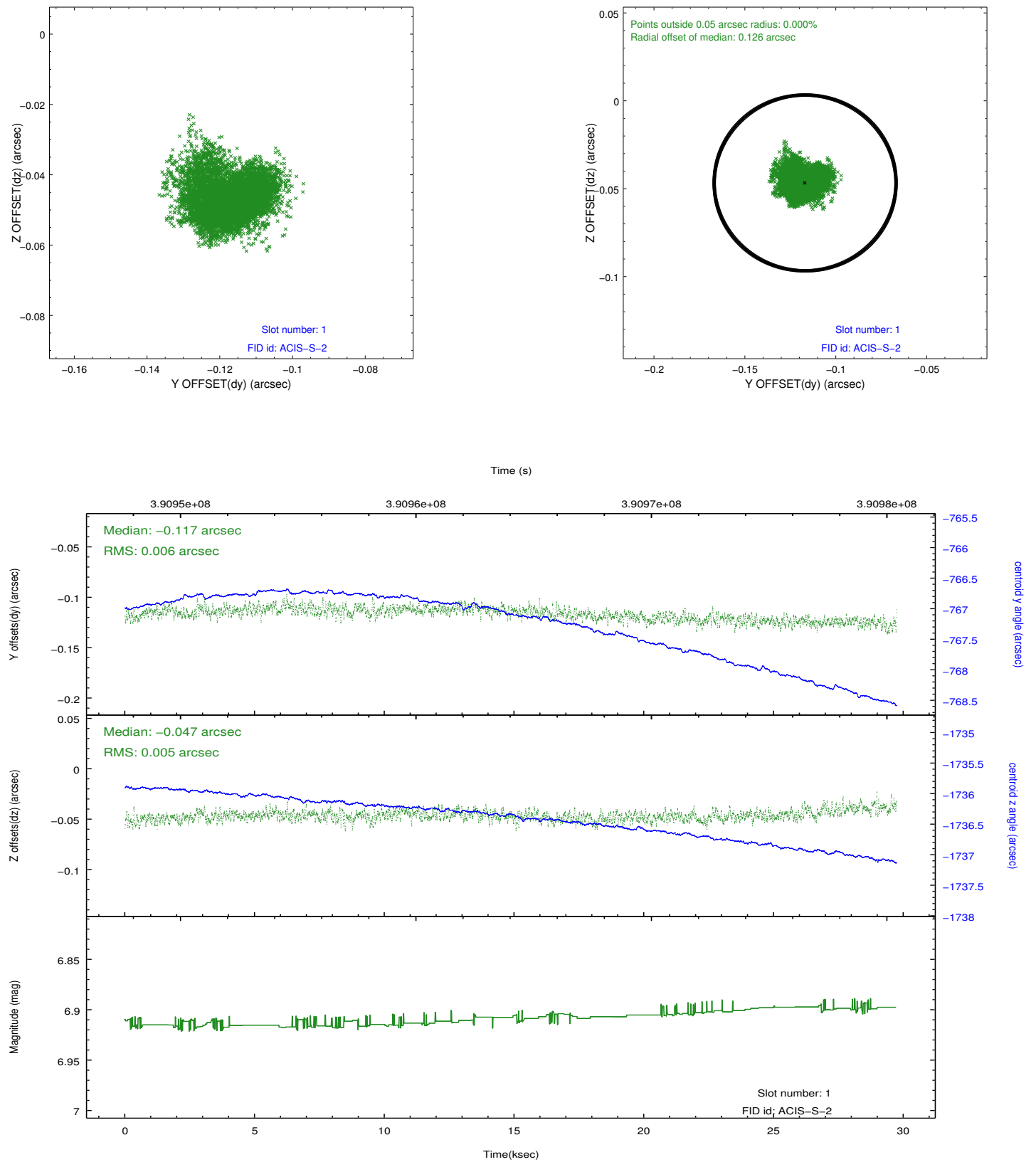


2.5 FID Slots

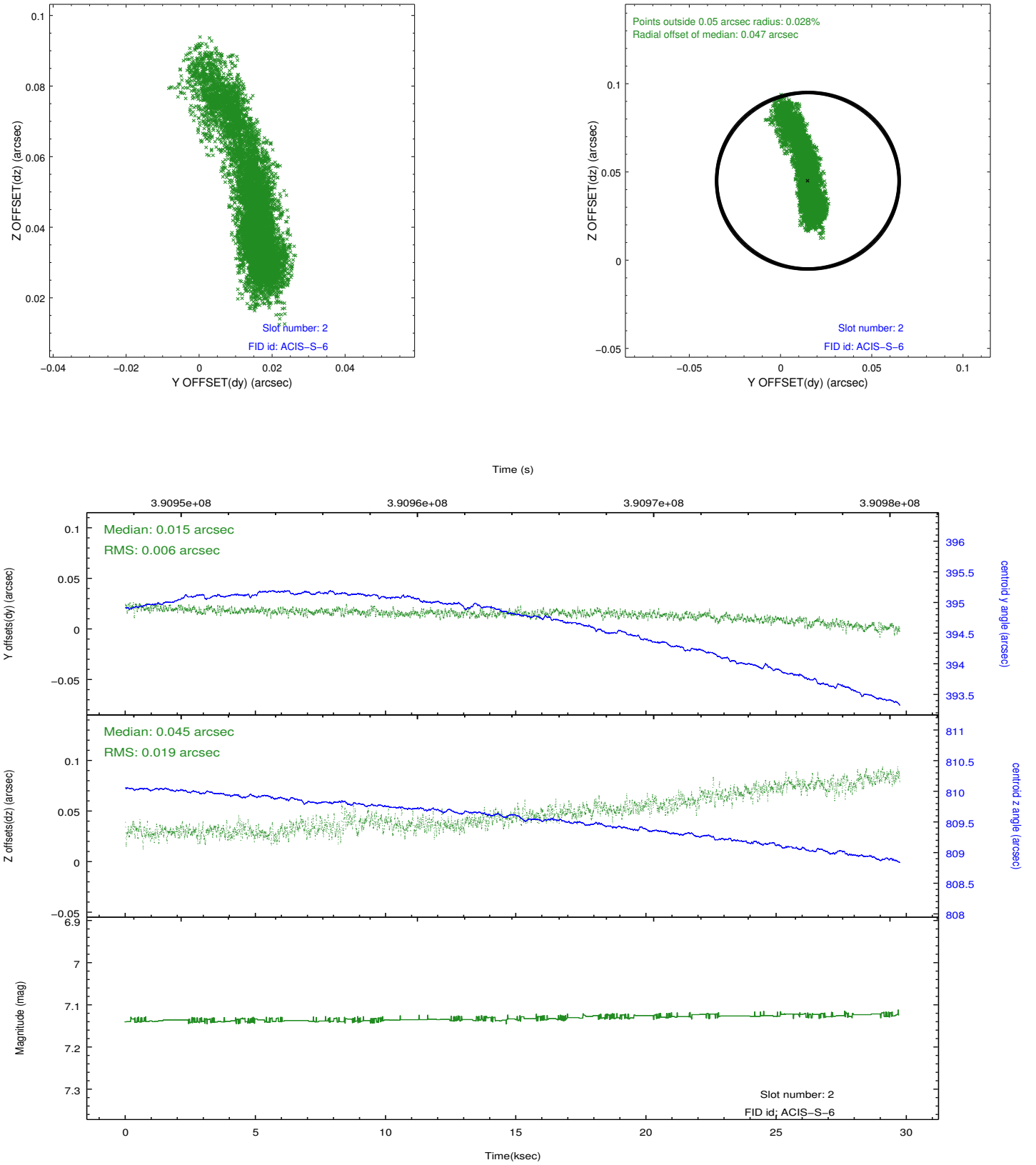
2.5.1 Slot 0



2.5.2 Slot 1



2.5.3 Slot 2



A Summary

A.1 Status

V&V Scientist	Jen Lauer
V&V Date (YYYY-MM-DD)	2012.07.02
V&V Edition	1
V&V Disposition and Status	OK
V&V Charge Time	29.050100223422

A.2 Comments