

# V&V Reference Report

## L2 ASCDS Version : 8.4.5

Observation 11835 - L2 Version 2  
Chandra X-Ray Center

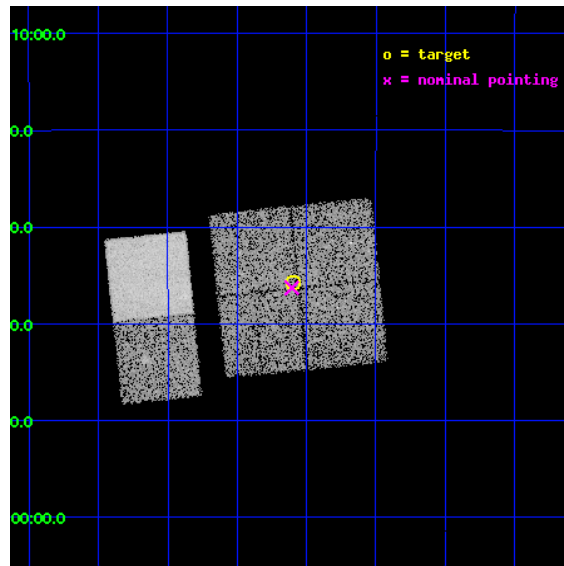
L2 Processing Date : Jul 1 2012

## Contents

<b>1</b>	<b>Front</b>	<b>2</b>
<b>2</b>	<b>OBI</b>	<b>3</b>
2.1	OBI . . . . .	3
2.1.1	Images . . . . .	3
2.1.2	Bias . . . . .	3
2.1.3	Parameters . . . . .	4
2.1.4	Events . . . . .	4
2.2	Compared Parameters . . . . .	5
2.3	Aspect . . . . .	6
2.4	Star Slots . . . . .	9
2.4.1	Slot 3 . . . . .	9
2.4.2	Slot 4 . . . . .	10
2.4.3	Slot 5 . . . . .	11
2.4.4	Slot 6 . . . . .	12
2.4.5	Slot 7 . . . . .	13
2.5	FID Slots . . . . .	14
2.5.1	Slot 0 . . . . .	14
2.5.2	Slot 1 . . . . .	15
2.5.3	Slot 2 . . . . .	16
<b>A</b>	<b>Summary</b>	<b>17</b>
A.1	Status . . . . .	17
A.2	Comments . . . . .	17

# 1 Front

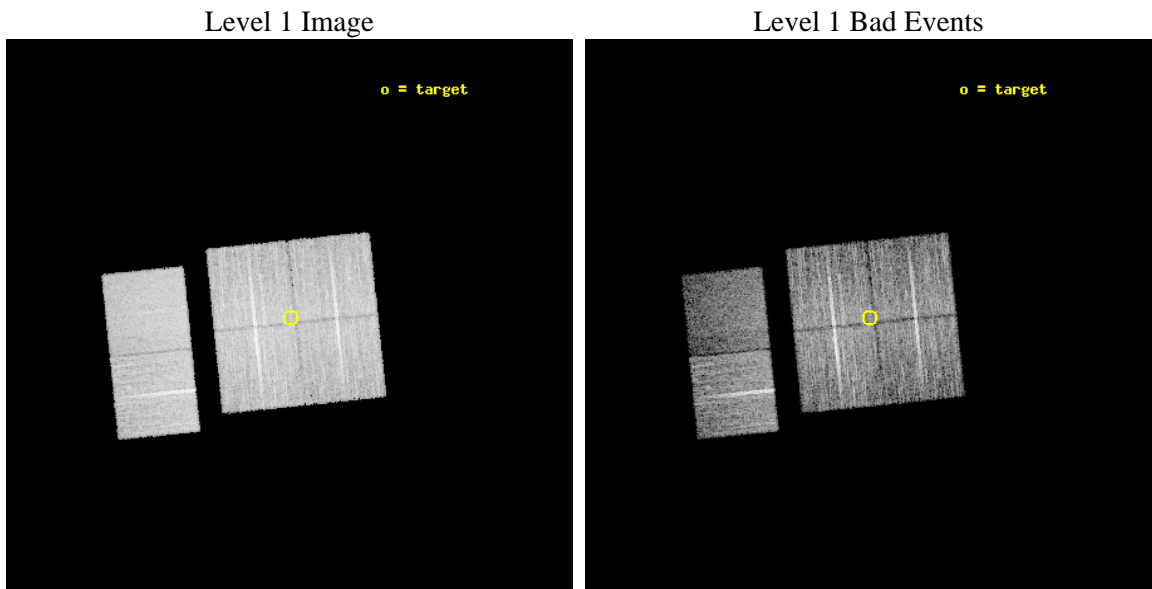
seq_num	501352	Sequence number
obs_id	11835	Observation id
title	Snap-shot survey of unidentified galactic GeV sources	Proposal tit
observer	Professor Gordon Garmire	Principal investigator
object	0FGL J1821.4-1444	Source name
dtcycle	0	&#160
cycle	P	events from which exps? Prim/Second/Both
ra_targ	275.399667	Observer's specified target RA [deg]
dec_targ	-14.596883	Observer's specified target Dec [deg]
ra_nom	275.40134087816	Nominal RA [deg]
dec_nom	-14.604865317801	Nominal Dec [deg]
roll_nom	264.15730200814	Nominal Roll [deg]
revision	2	Processing version of data
ontime	10047.380980492	Sum of GTIs [s]
livetime	9920.1549927102	Livetime [s]
ontime0	10044.016820252	Sum of GTIs [s]
ontime1	10047.298900485	Sum of GTIs [s]
ontime2	10040.857849956	Sum of GTIs [s]
ontime3	10047.380980492	Sum of GTIs [s]
ontime6	10040.980969906	Sum of GTIs [s]
ontime7	10047.422020495	Sum of GTIs [s]
l2events	69865	Number of level 2 events



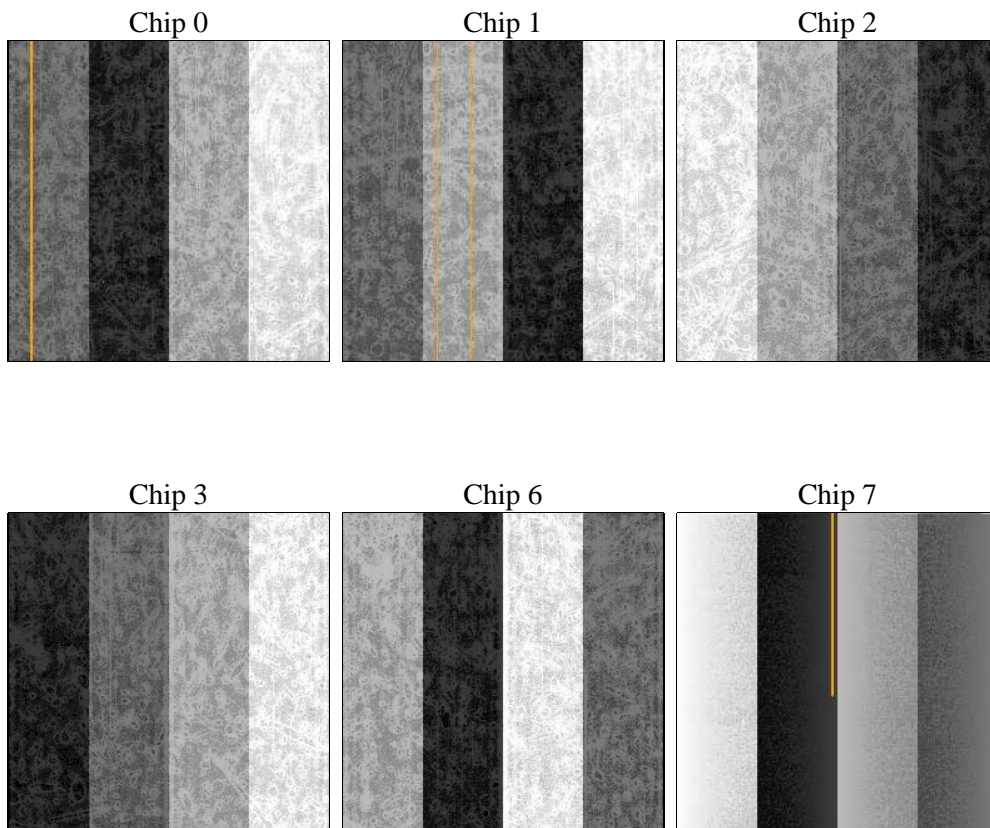
## 2 OBI

### 2.1 OBI

#### 2.1.1 Images



#### 2.1.2 Bias



### 2.1.3 Parameters

obi_num	2	Obi number	sched_exp_time	10000.000000	[s] Scheduled observation exposure time
ascdsver	8.4.5	Processing system revision	ontime	10047.380980492	Sum of GTIs [s]
caldsver	4.5.0	&#160	ontime0	10044.016820252	Sum of GTIs [s]
date	2012-07-01T16:28:36	Date and time of file creation	ontime1	10047.298900485	Sum of GTIs [s]
revision	2	Processing version of data	ontime2	10040.857849956	Sum of GTIs [s]
			ontime3	10047.380980492	Sum of GTIs [s]
			ontime6	10040.980969906	Sum of GTIs [s]
			ontime7	10047.422020495	Sum of GTIs [s]
			l1events	425868	Number of level 1 events

### 2.1.4 Events

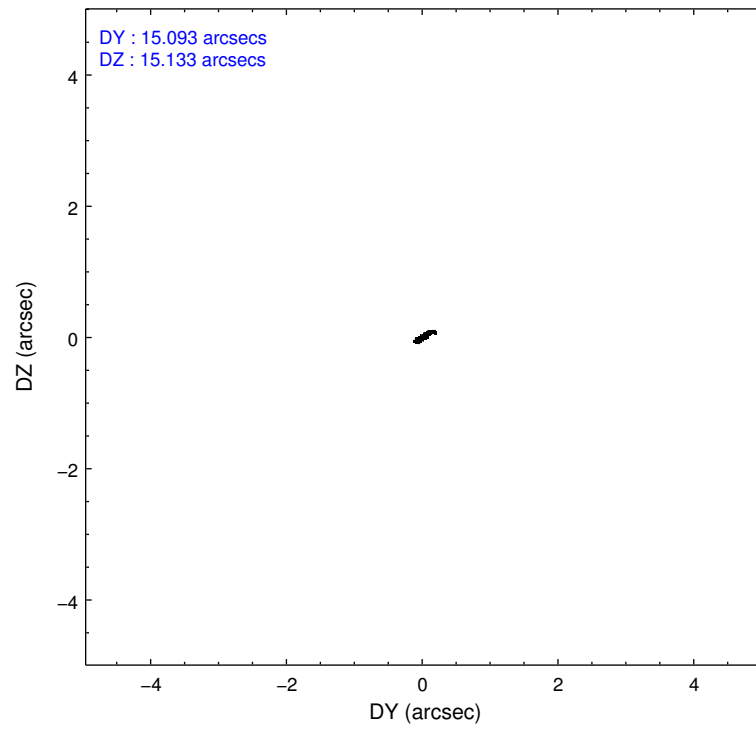
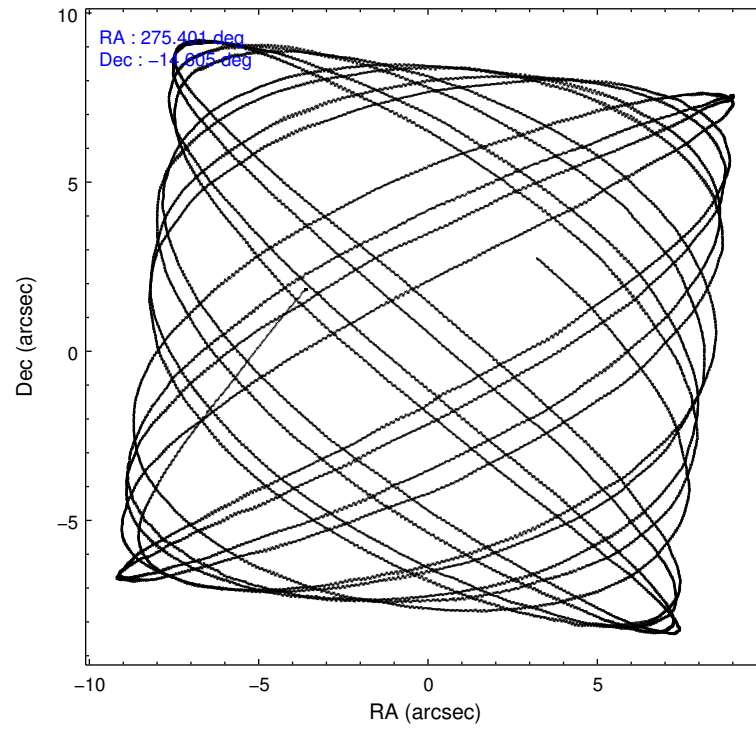
	ccd 0	ccd 1	ccd 2	ccd 3	ccd 6	ccd 7		ccd 0	ccd 1	ccd 2	ccd 3	ccd 6	ccd 7
level 1 events	64029	67710	75162	72165	72899	73903	grade 0 events	3319	3475	3267	3263	3281	3839
rejected events	55820	59057	67037	64361	64381	37440		5%	5%	4%	4%	4%	5%
rejected %	87%	87%	89%	89%	88%	50%	grade 1 events	48	36	42	43	51	115
								0%	0%	0%	0%	0%	0%
							grade 2 events	1899	1853	1908	1681	1981	7843
								2%	2%	2%	2%	2%	10%
							grade 3 events	838	843	739	751	821	3320
								1%	1%	0%	1%	1%	4%
							grade 4 events	754	866	840	757	804	3329
								1%	1%	1%	1%	1%	4%
							grade 5 events	2360	2570	2263	2683	2756	7584
								3%	3%	3%	3%	3%	10%
							grade 6 events	1403	1622	1374	1359	1635	18159
								2%	2%	1%	1%	2%	24%
							grade 7 events	53408	56445	64729	61628	61570	29714
								83%	83%	86%	85%	84%	40%

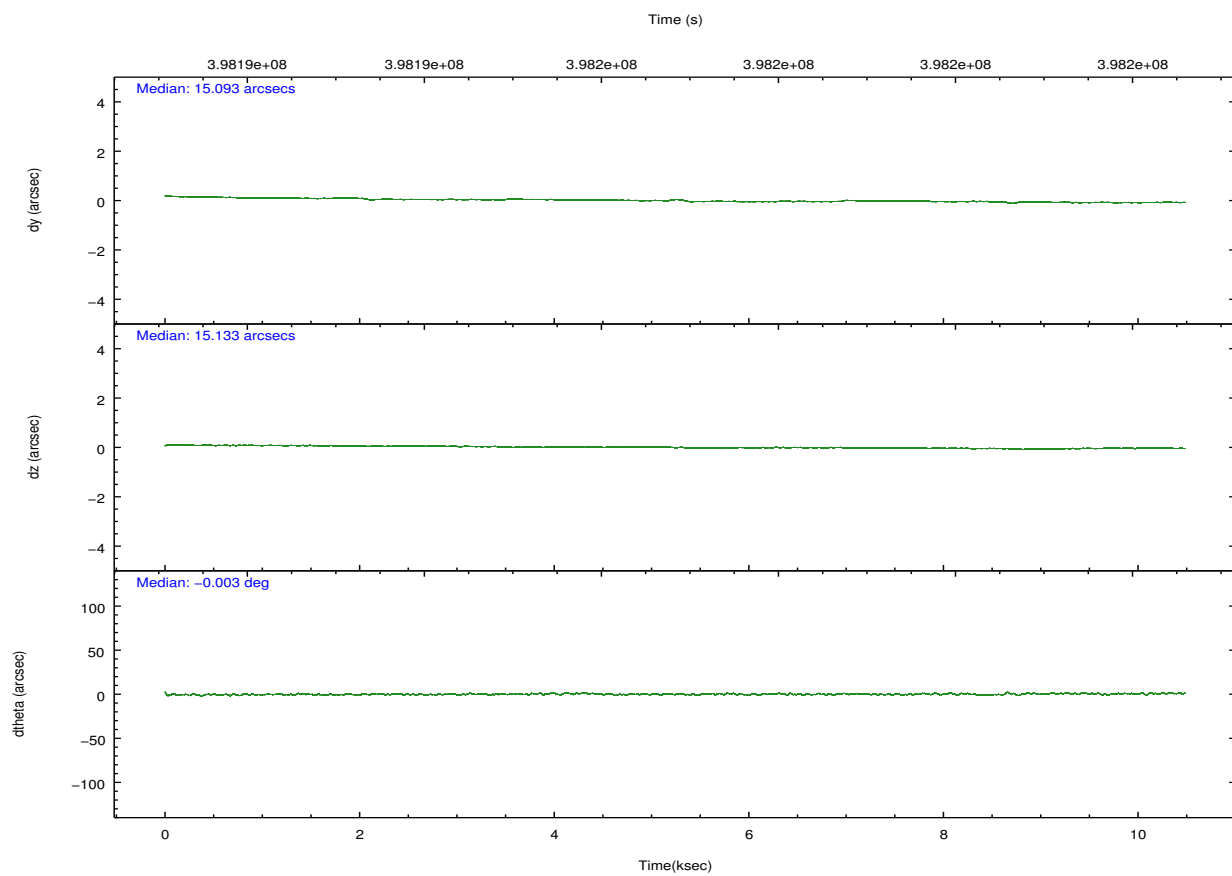
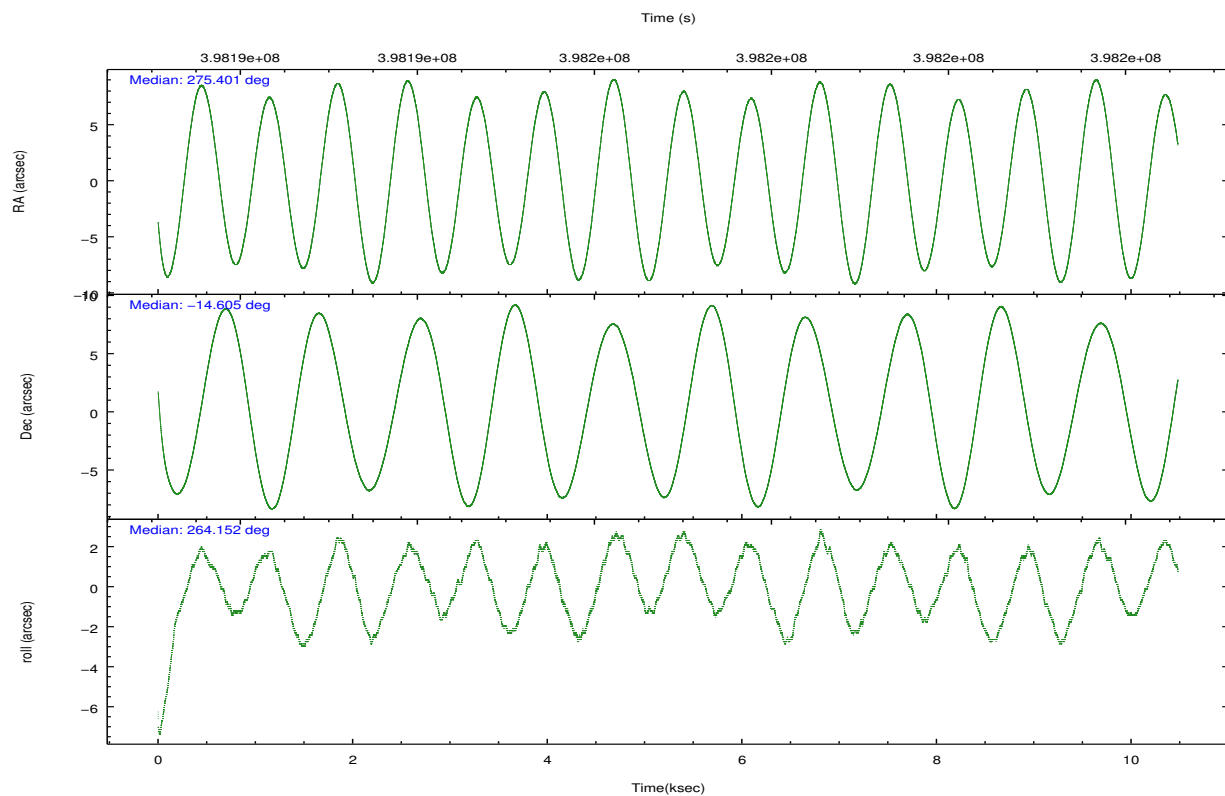


## 2.2 Compared Parameters

Parameter	Planned	Actual	Parameter	Planned	Actual
Instrument	ACIS	ACIS	Obspar format version number	7	7
Detector	ACIS-012367	ACIS-012367	Obspar file type	PREDICTED	ACTUAL
Grating	NONE	NONE	Obspar update status	NONE	UPDATED
Data mode	VFAINT	VFAINT	CCD I0 on	Y	Y
Observation mode	POINTING	POINTING	CCD I1 on	Y	Y
[deg] Pointing RA	275.389595	275.4013408781644	CCD I2 on	Y	Y
[deg] Pointing Dec	-14.579759	-14.60486531780118	CCD I3 on	Y	Y
[deg] Pointing Roll	263.945659	264.1573020081383	CCD S0 on	N	N
[mm] SIM focus pos	-0.782348	-0.7809083437167272	CCD S1 on	N	N
[mm] SIM defocus	0	0.001439871863259334	CCD S2 on	O2	Y
[mm] SIM translation stage pos	-233.592463	-233.5874344608287	CCD S3 on	O1	Y
[mm] SIM translation stage offset	0	-0.005018542100998502	CCD S4 on	N	N
[s] Observation start time (MET)	398192067.184000	398190764.31597	CCD S5 on	N	N
Observation start date	2010-08-14T16:53:21	2010-08-14T16:32:44	Number of optional ACIS chips dropped	0	0
[s] Observation end time (MET)	398202067.184000	398202748.10409	On-chip summing requested	N	N
Observation end date	2010-08-14T19:40:01	2010-08-14T19:52:28	Subarray requested	NONE	NONE
Read mode	TIMED	TIMED	Alternating exposures requested	N	N
			[s] Primary exposure time	0.000000	3.2

## 2.3 Aspect



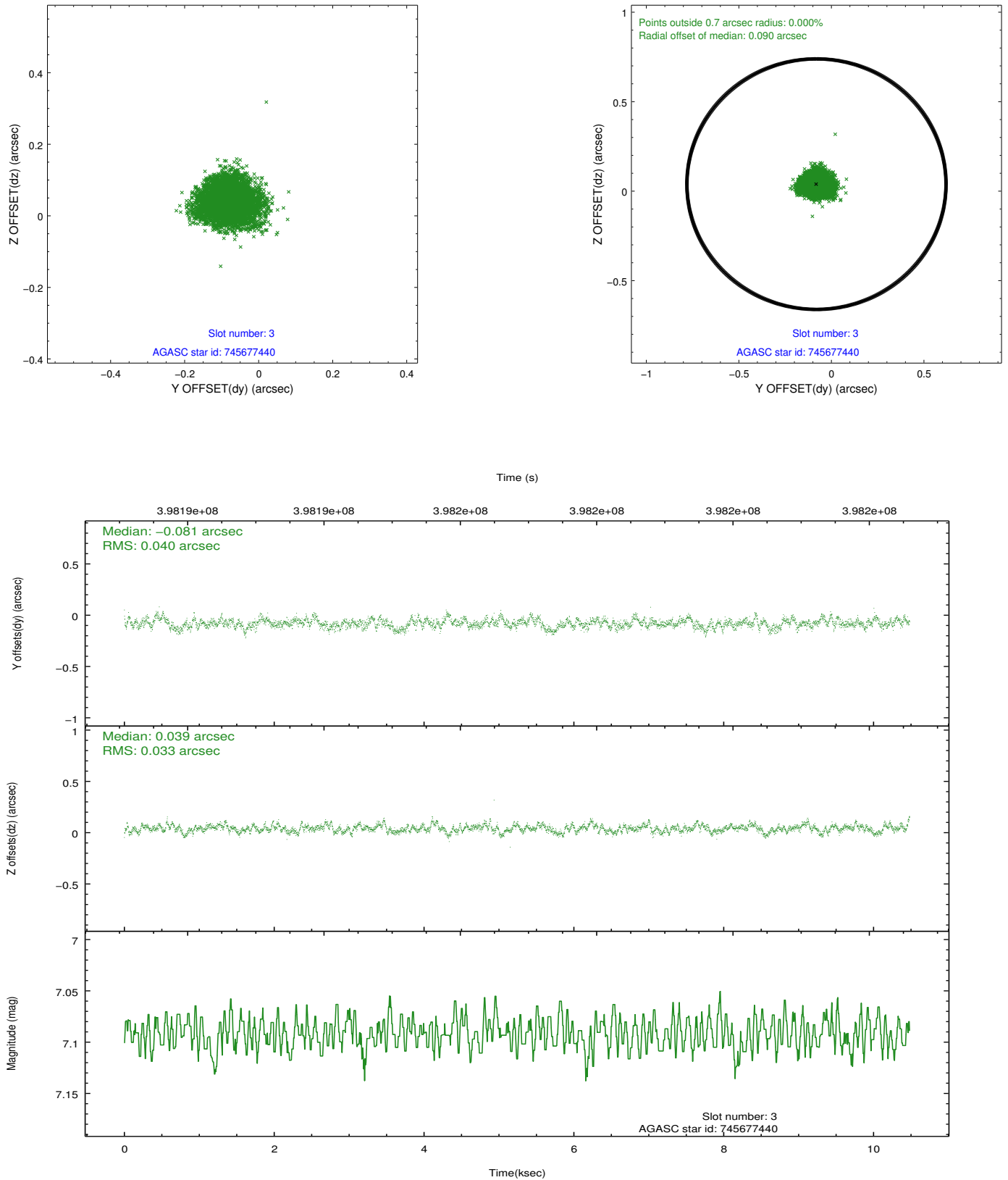


### Slot Statistics

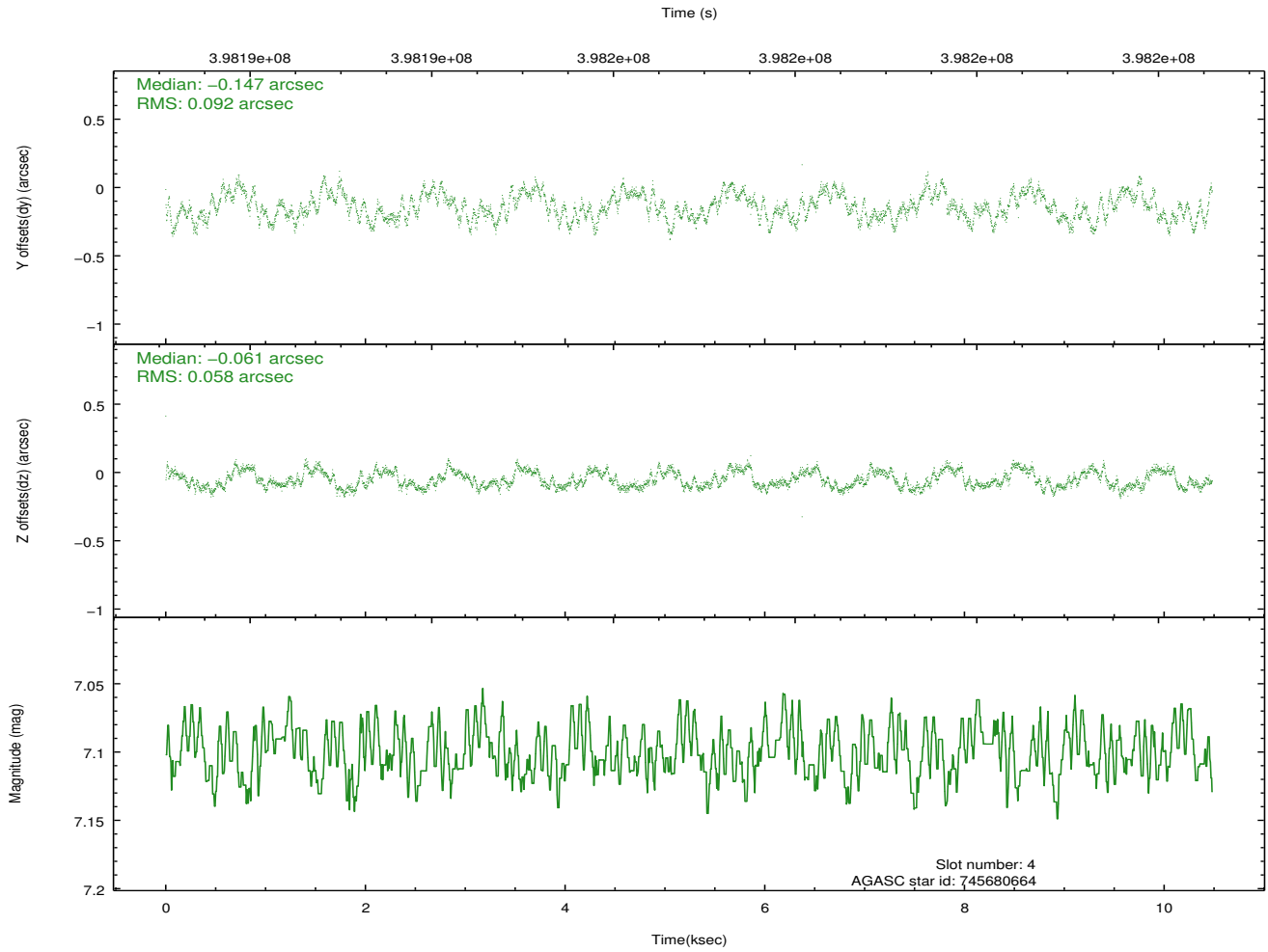
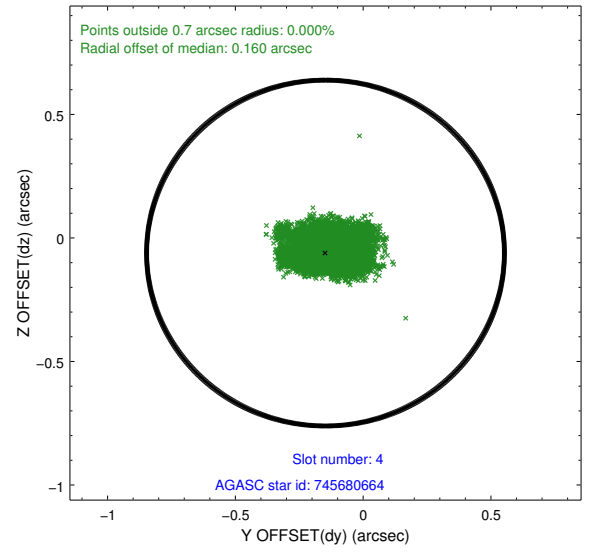
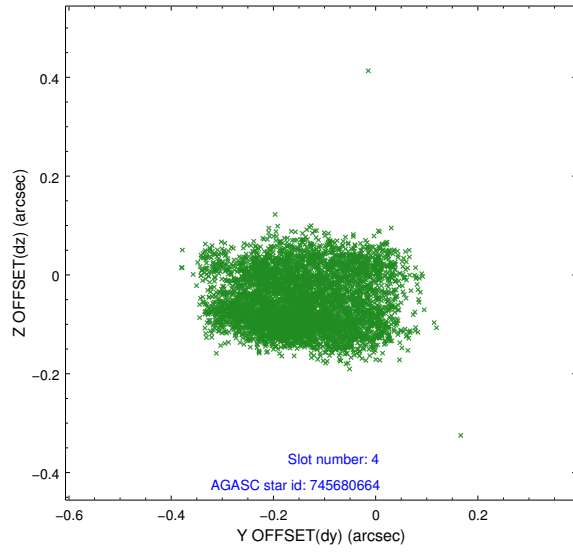
slot	status	id	mag	n_pts	med_dy	med_dz	dr1	dr2	ra	dec	mean_y	mean_z
0	FID	ACIS-I-2	7.03	2557	-0.084	-0.059	0.009	0.015	0.000000	0.000000	-769.89	-845.17
1	FID	ACIS-I-4	7.04	2557	0.178	0.068	0.006	0.010	0.000000	0.000000	2144.18	1060.90
2	FID	ACIS-I-5	7.11	2557	-0.195	0.061	0.009	0.014	0.000000	0.000000	-1823.21	1059.28
3	GUIDE	745677440	7.09	5114	-0.081	0.039	0.055	0.090	275.264510	-14.978543	1474.40	-281.35
4	GUIDE	745680664	7.10	5111	-0.147	-0.061	0.118	0.183	275.566567	-14.388697	-748.58	540.97
5	GUIDE	745681536	8.58	5113	0.097	0.099	0.083	0.130	275.686309	-14.363481	-882.71	947.08
6	GUIDE	821167840	8.50	5113	0.126	-0.109	0.072	0.121	274.815032	-15.171041	2330.20	-1760.23
7	GUIDE	821172096	7.80	5112	0.001	0.024	0.052	0.081	275.077024	-15.219483	2406.16	-836.89

## 2.4 Star Slots

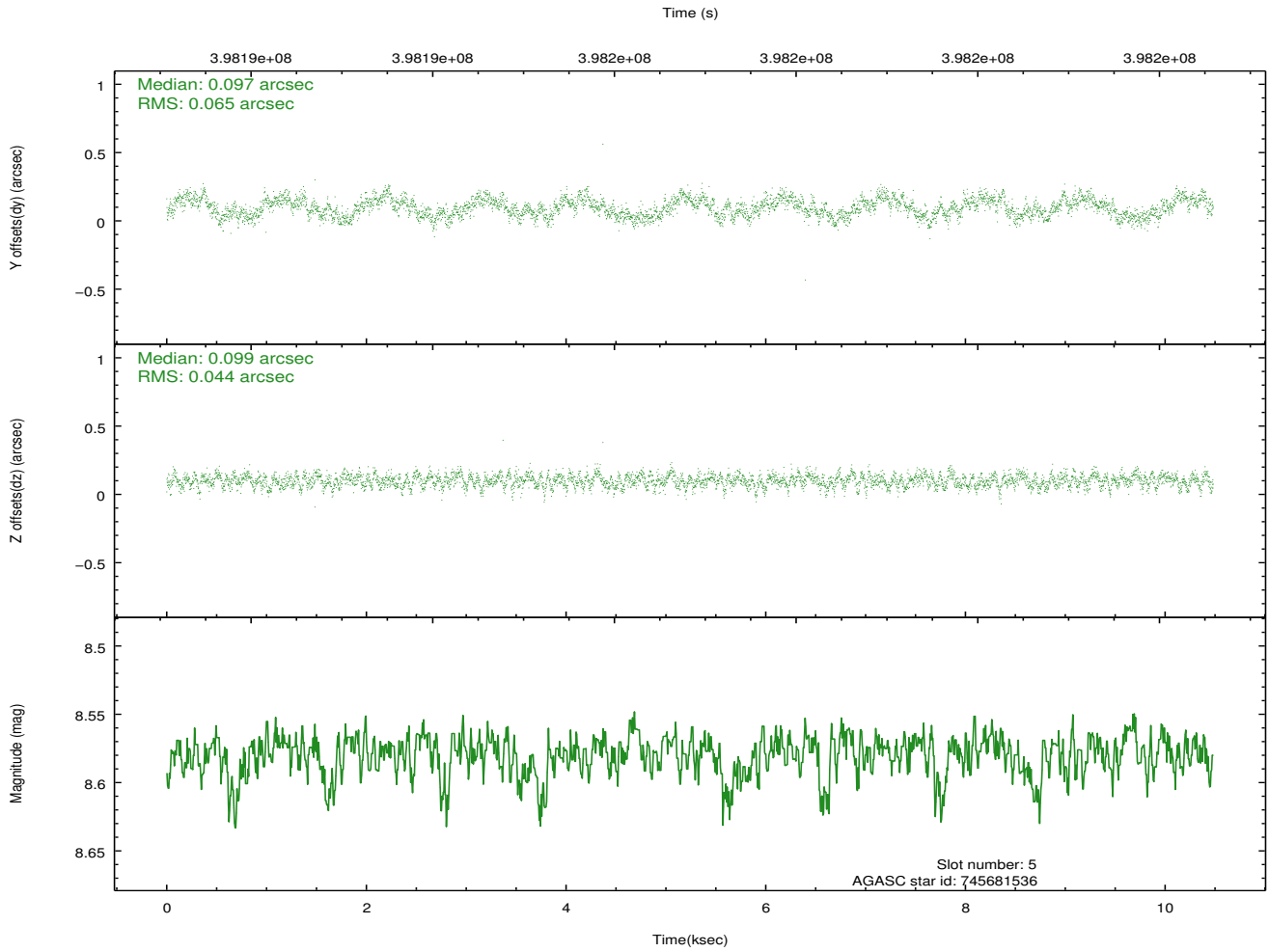
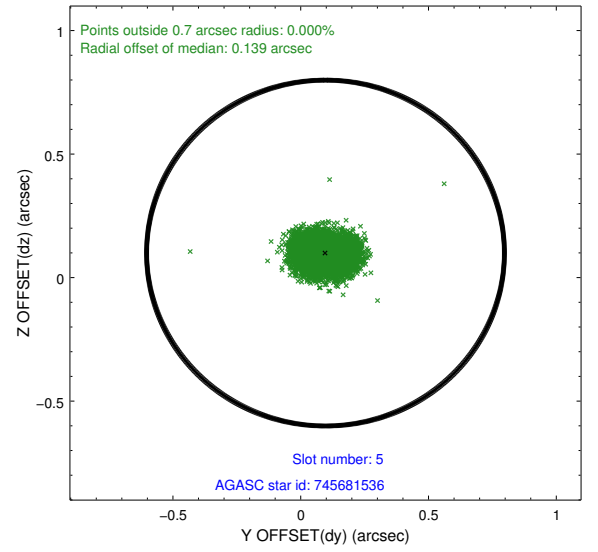
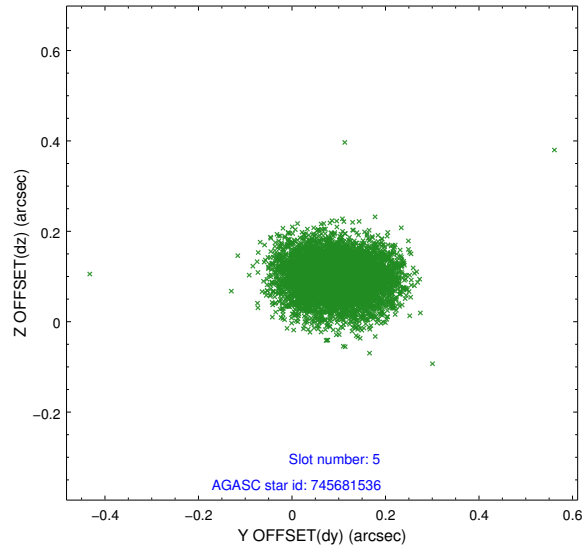
### 2.4.1 Slot 3



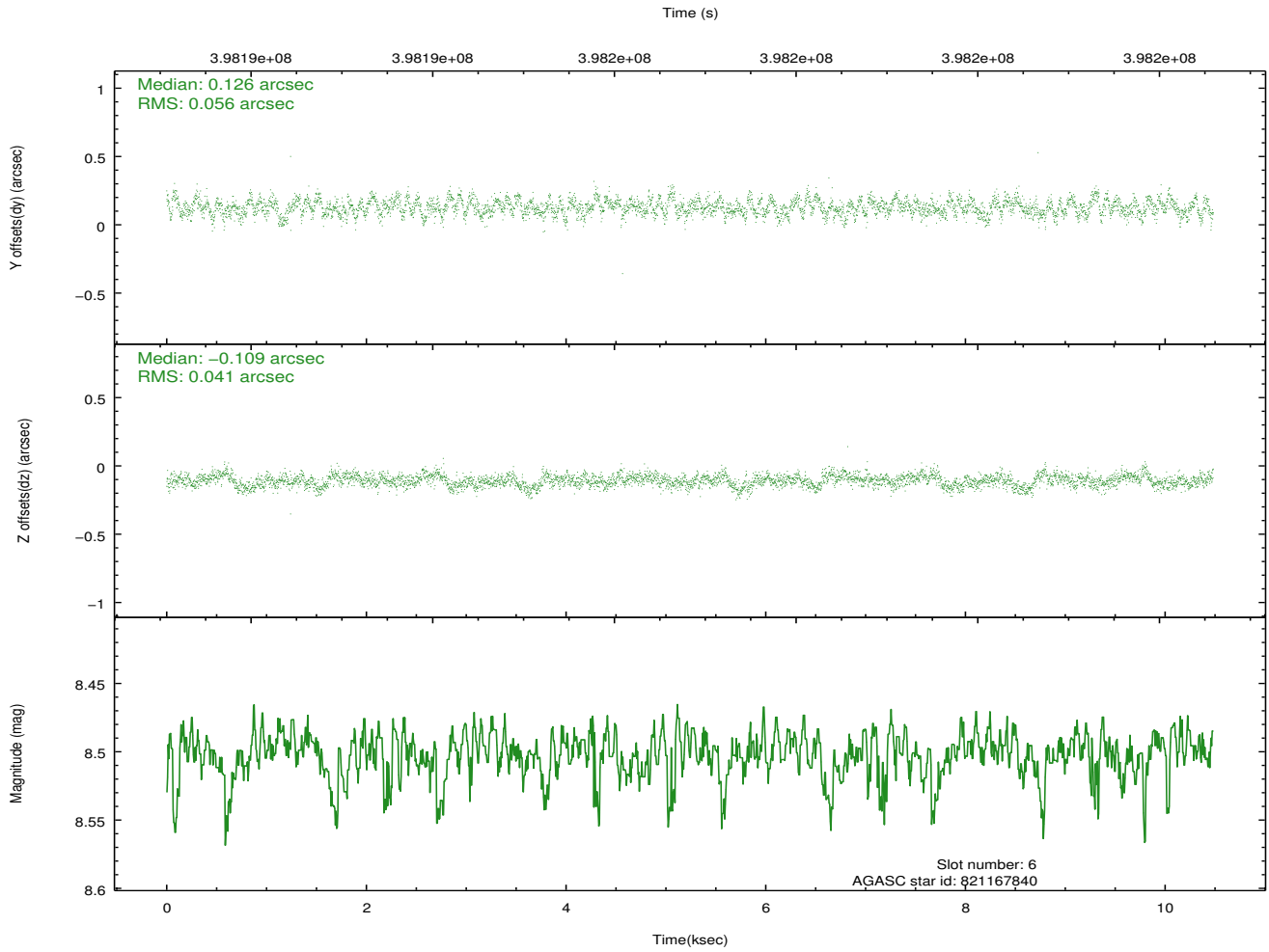
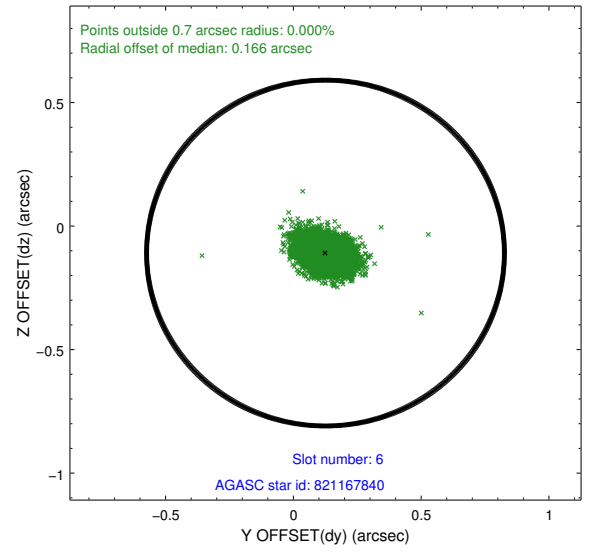
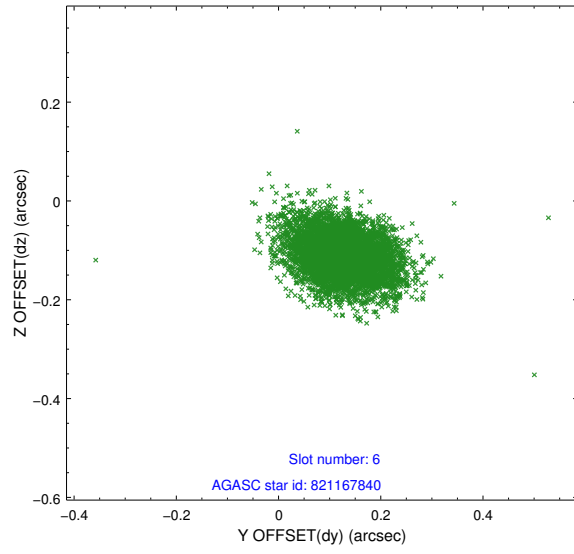
## 2.4.2 Slot 4



### 2.4.3 Slot 5

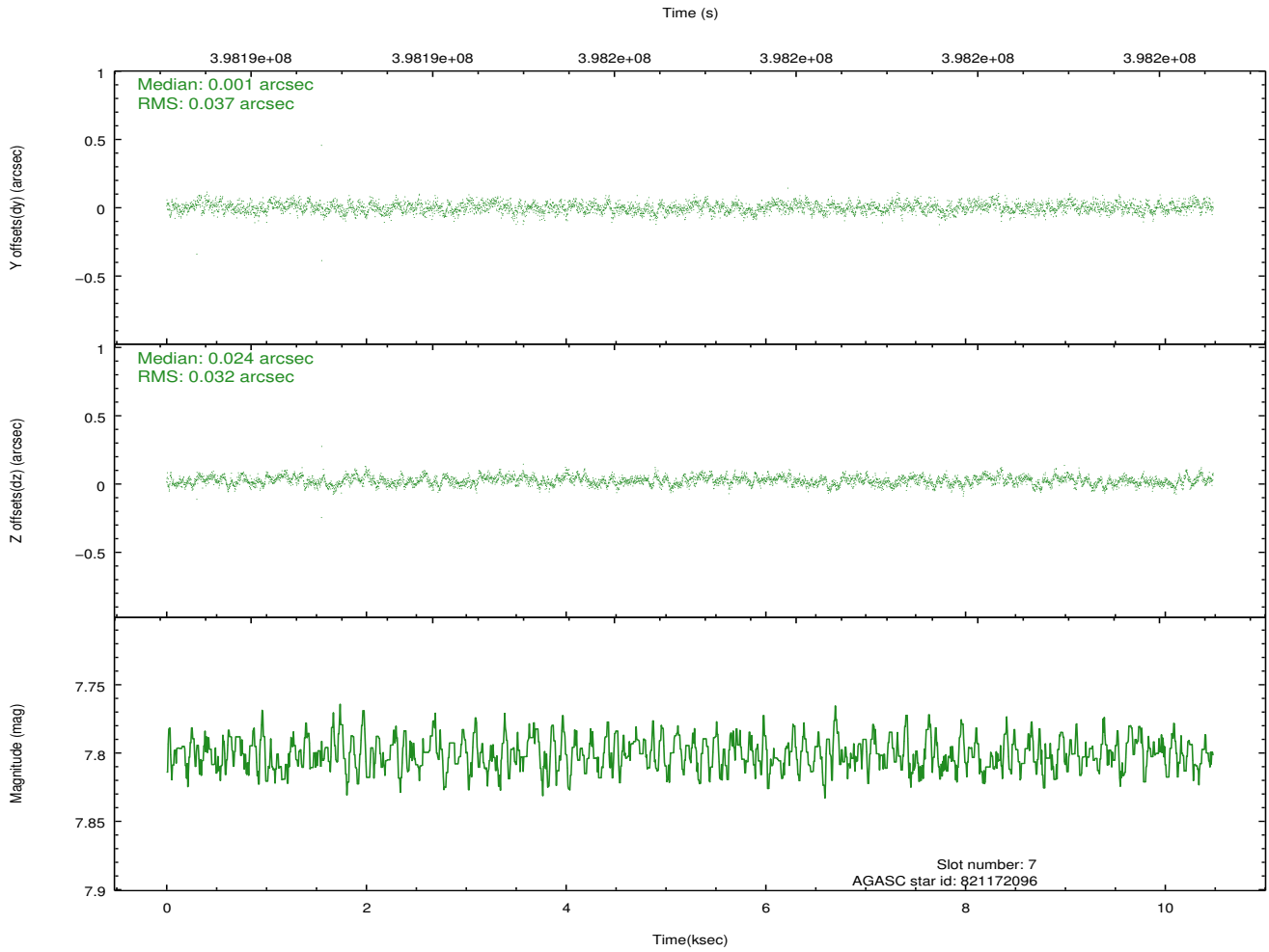
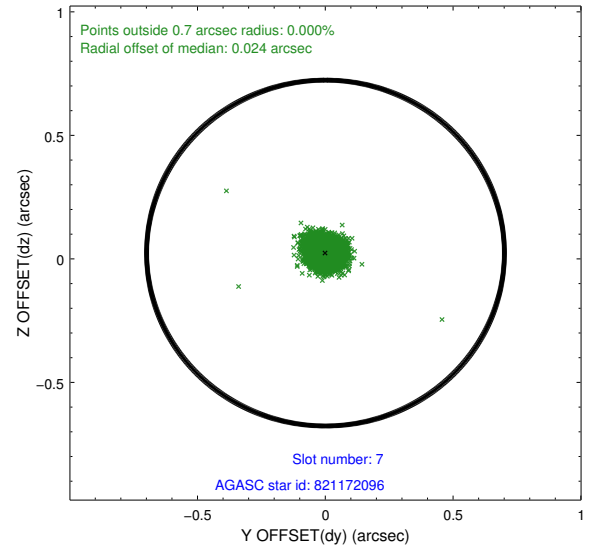
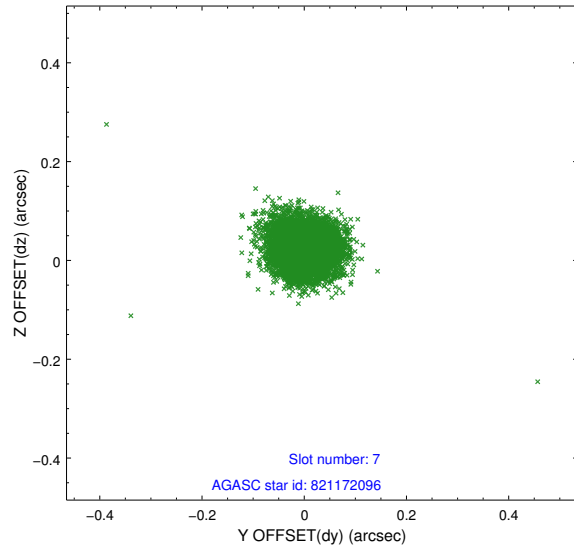


## 2.4.4 Slot 6



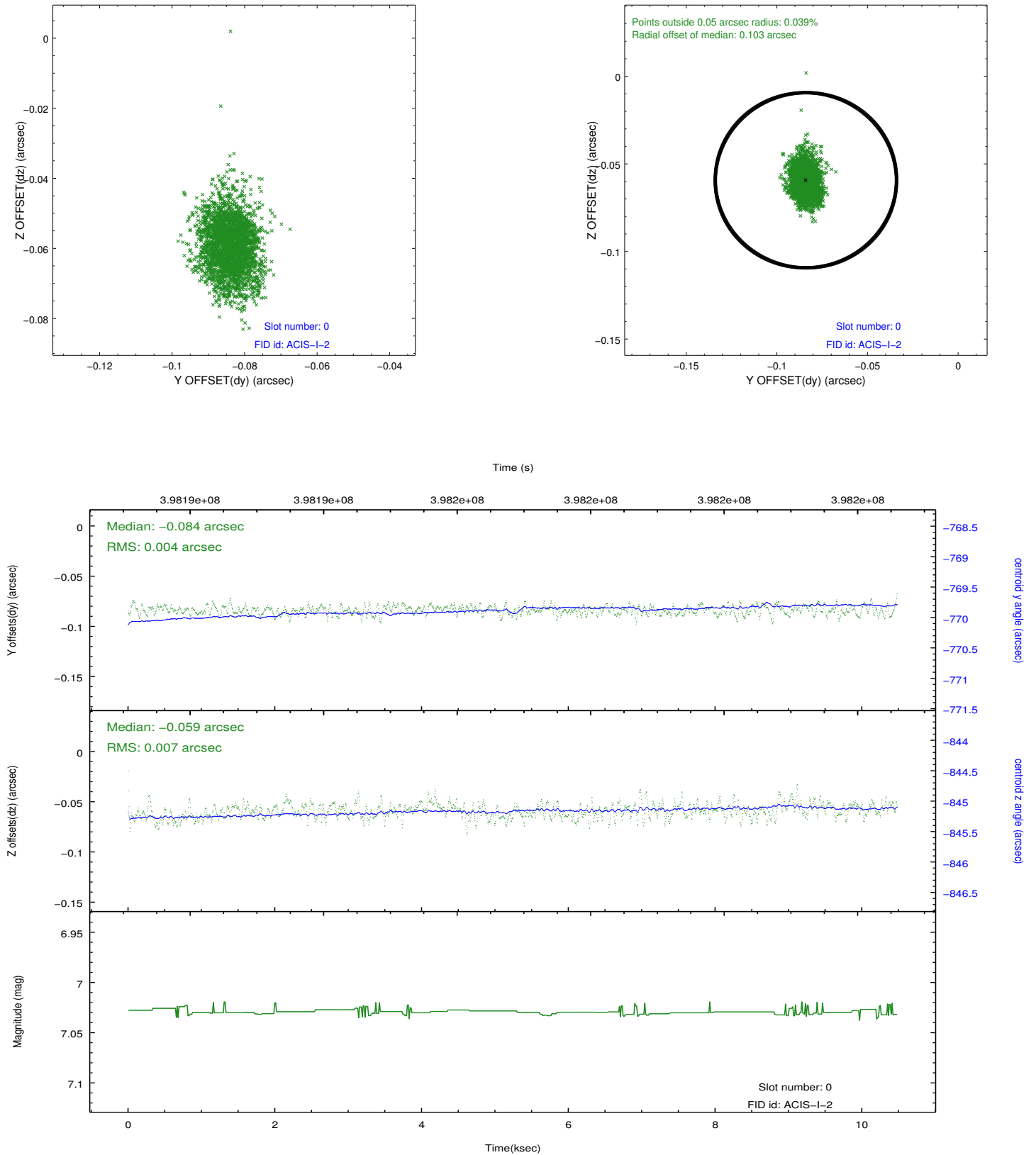


## 2.4.5 Slot 7

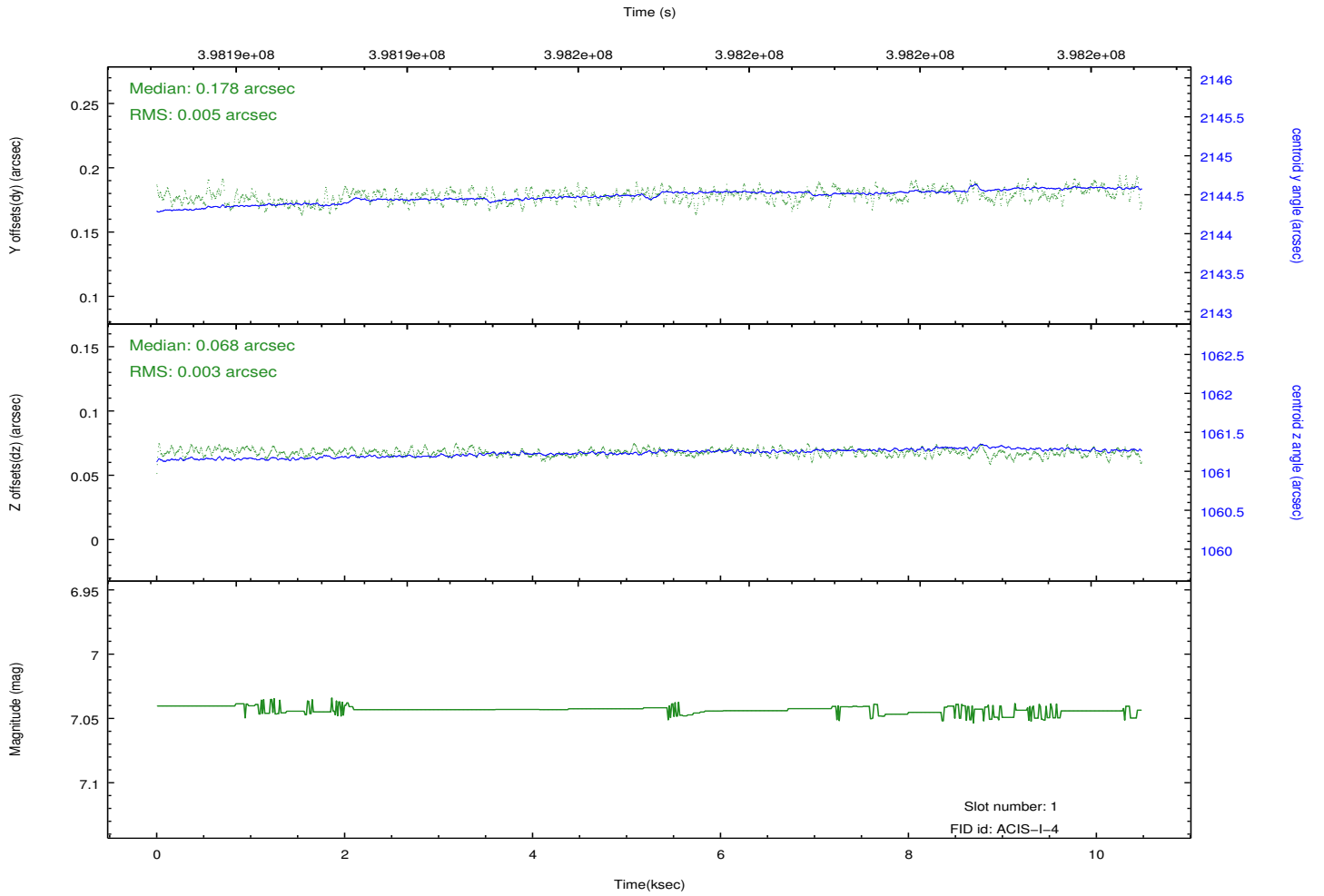
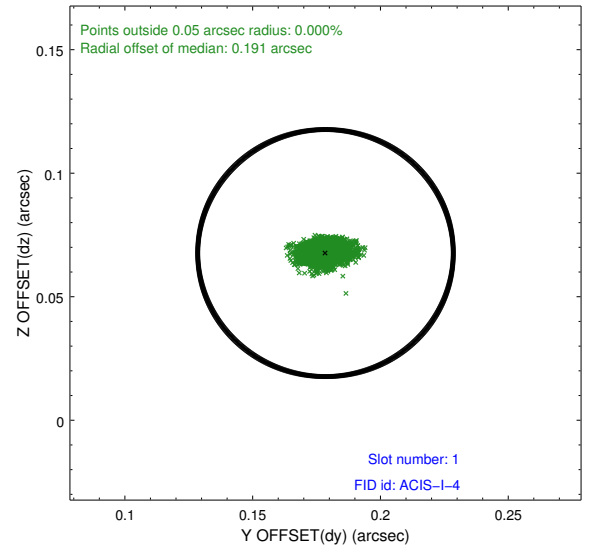
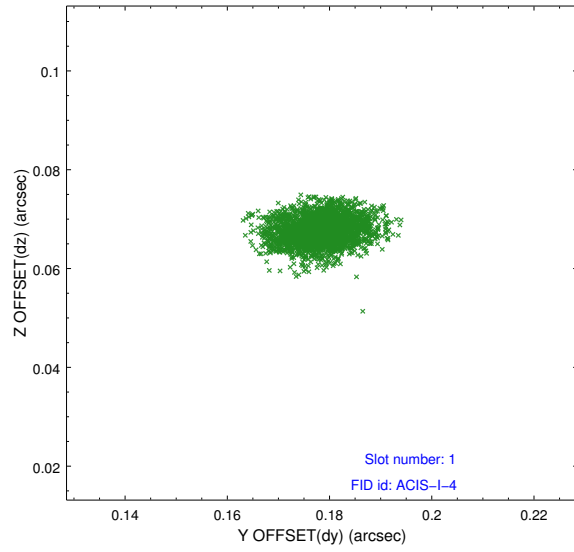


## 2.5 FID Slots

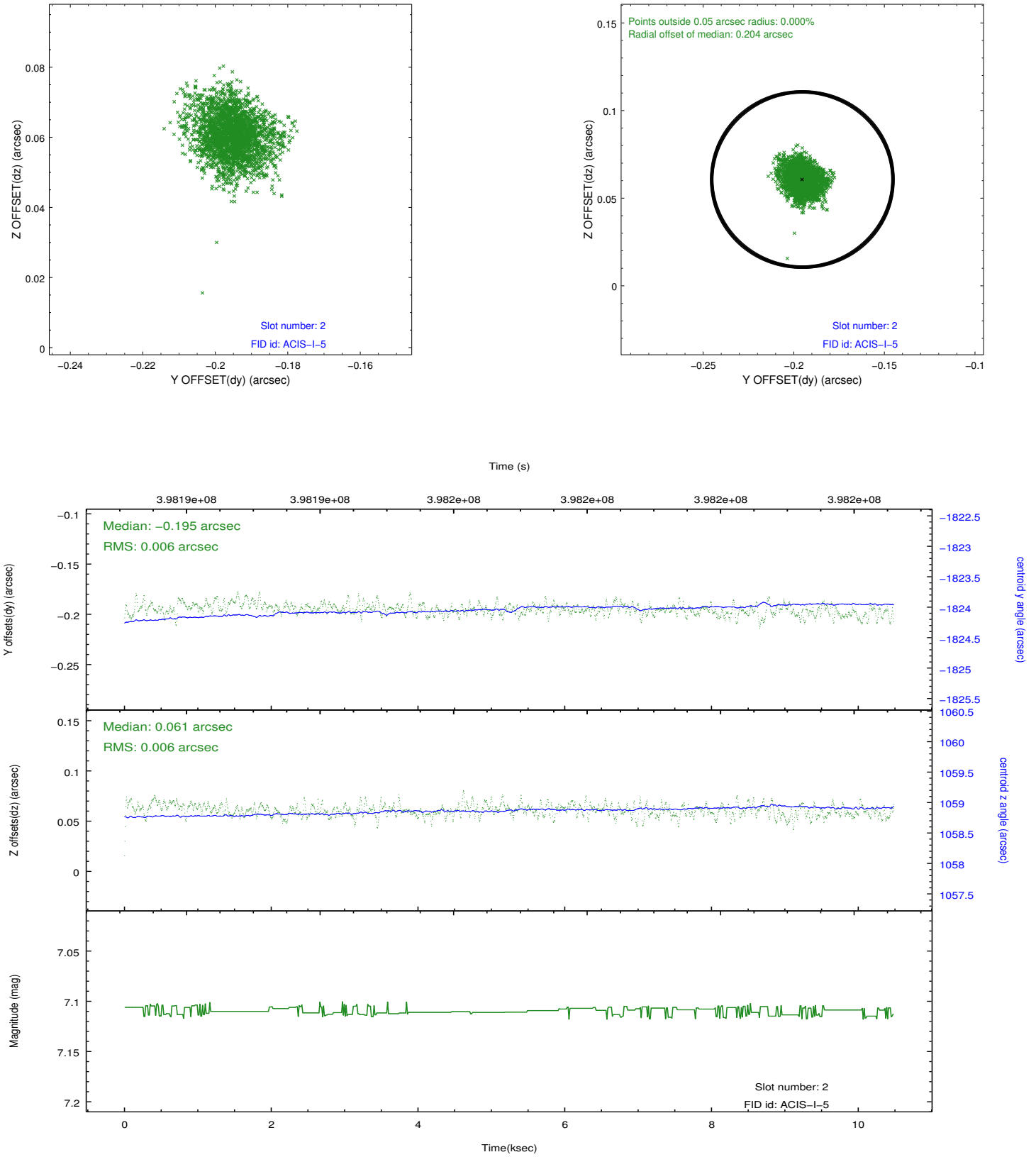
### 2.5.1 Slot 0



## 2.5.2 Slot 1



### 2.5.3 Slot 2



## **A Summary**

### **A.1 Status**

V&V Scientist	Beth Sundheim
V&V Date (YYYY-MM-DD)	2012.07.10
V&V Edition	1
V&V Disposition and Status	OK
V&V Charge Time	10.047380987287

### **A.2 Comments**