

V&V Reference Report

L2 ASCDS Version : 8.4.5

Observation 13122 - L2 Version 2
Chandra X-Ray Center

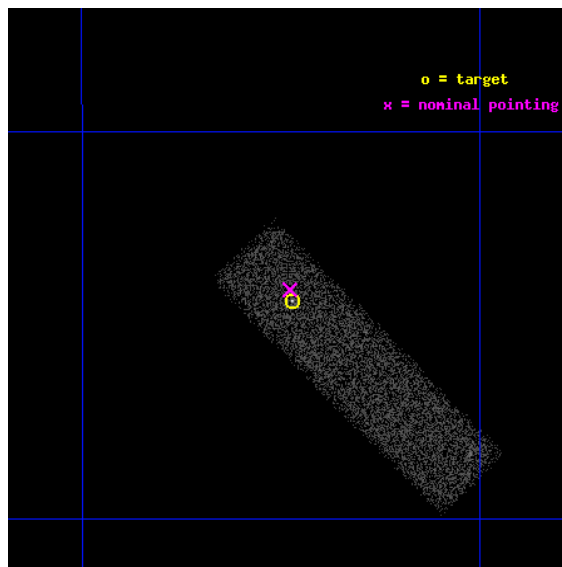
L2 Processing Date : Jul 2 2012

Contents

1	Front	2
2	OBI	3
2.1	OBI	3
2.1.1	Images	3
2.1.2	Bias	3
2.1.3	Parameters	4
2.1.4	Events	4
2.2	Compared Parameters	5
2.3	Aspect	6
2.4	Star Slots	9
2.4.1	Slot 3	9
2.4.2	Slot 4	10
2.4.3	Slot 5	11
2.4.4	Slot 6	12
2.4.5	Slot 7	13
2.5	FID Slots	14
2.5.1	Slot 0	14
2.5.2	Slot 1	15
2.5.3	Slot 2	16
A	Summary	17
A.1	Status	17
A.2	Comments	17

1 Front

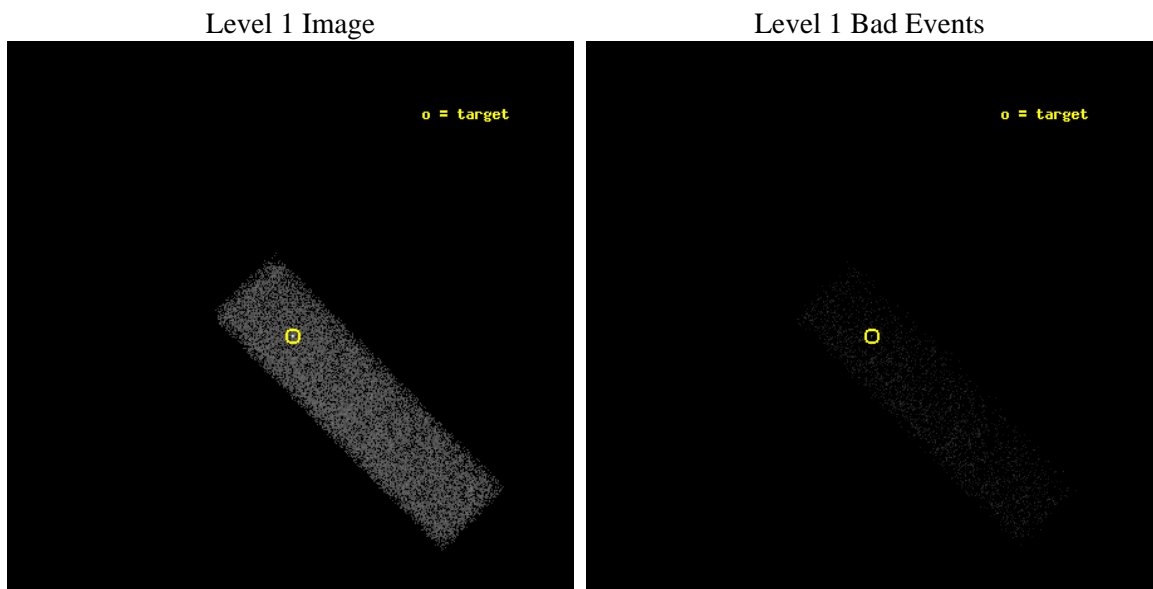
seq_num	401281	Sequence number
obs_id	13122	Observation id
title	Constraining the Spectrum of HLX-1 in Outburst	Proposal title
observer	Dr Sean Farrell	Principal investigator
object	ESO 243-49 HLX-1	Source name
dtcycle	0	
cycle	P	events from which exps? Prim/Second/Both
ra_targ	17.617917	Observer's specified target RA [deg]
dec_targ	-46.072861	Observer's specified target Dec [deg]
ra_nom	17.619412954496	Nominal RA [deg]
dec_nom	-46.068116613134	Nominal Dec [deg]
roll_nom	45.209438970022	Nominal Roll [deg]
revision	2	Processing version of data
ontime	10026.400149465	Sum of GTIs [s]
livetime	9537.1446299483	Livetime [s]
ontime7	10026.400149465	Sum of GTIs [s]
l2events	13139	Number of level 2 events



2 OBI

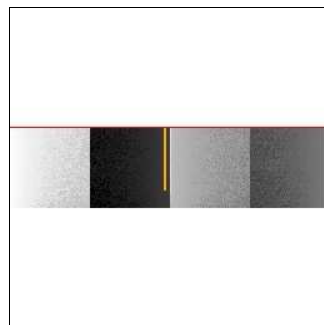
2.1 OBI

2.1.1 Images



2.1.2 Bias

Chip 7



2.1.3 Parameters

obi_num	0	Obi number	sched_exp_time	10000.000000	[s] Scheduled observation exposure time
ascdsver	8.4.5	Processing system revision	ontime	10026.400149465	Sum of GTIs [s]
caldsver	4.5.0	 	ontime7	10026.400149465	Sum of GTIs [s]
date	2012-07-02T18:30:32	Date and time of file creation	l1events	25428	Number of level 1 events
revision	2	Processing version of data			

2.1.4 Events

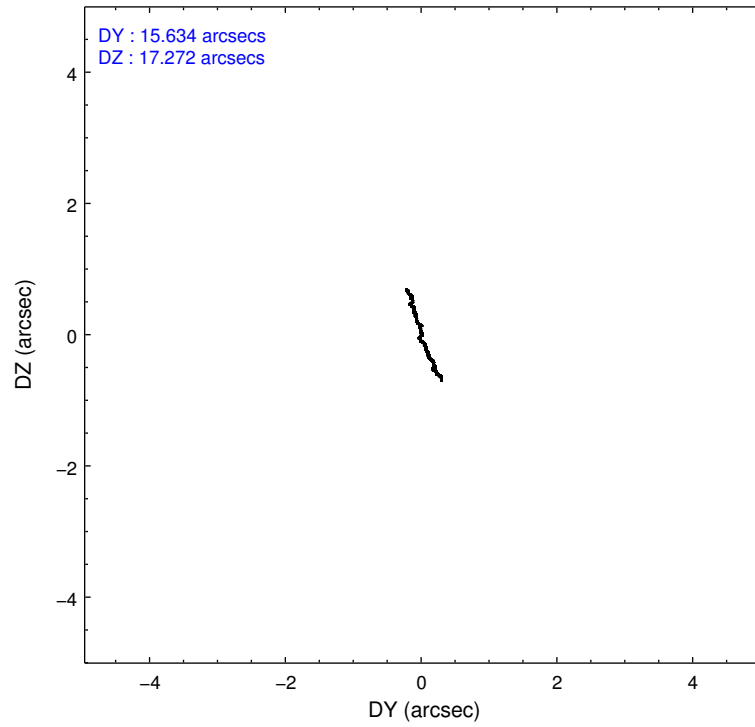
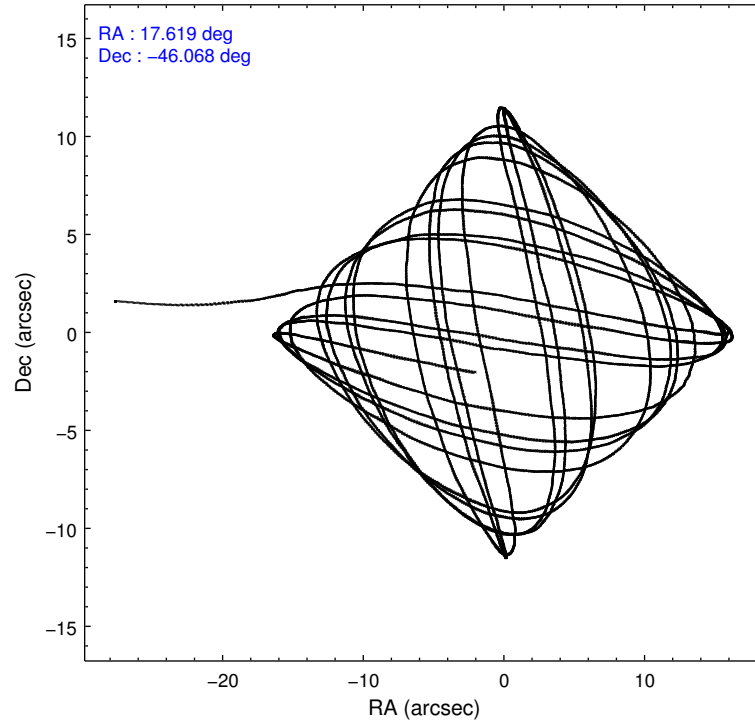
	ccd 7
level 1 events	25428
rejected events	11891
rejected %	46%

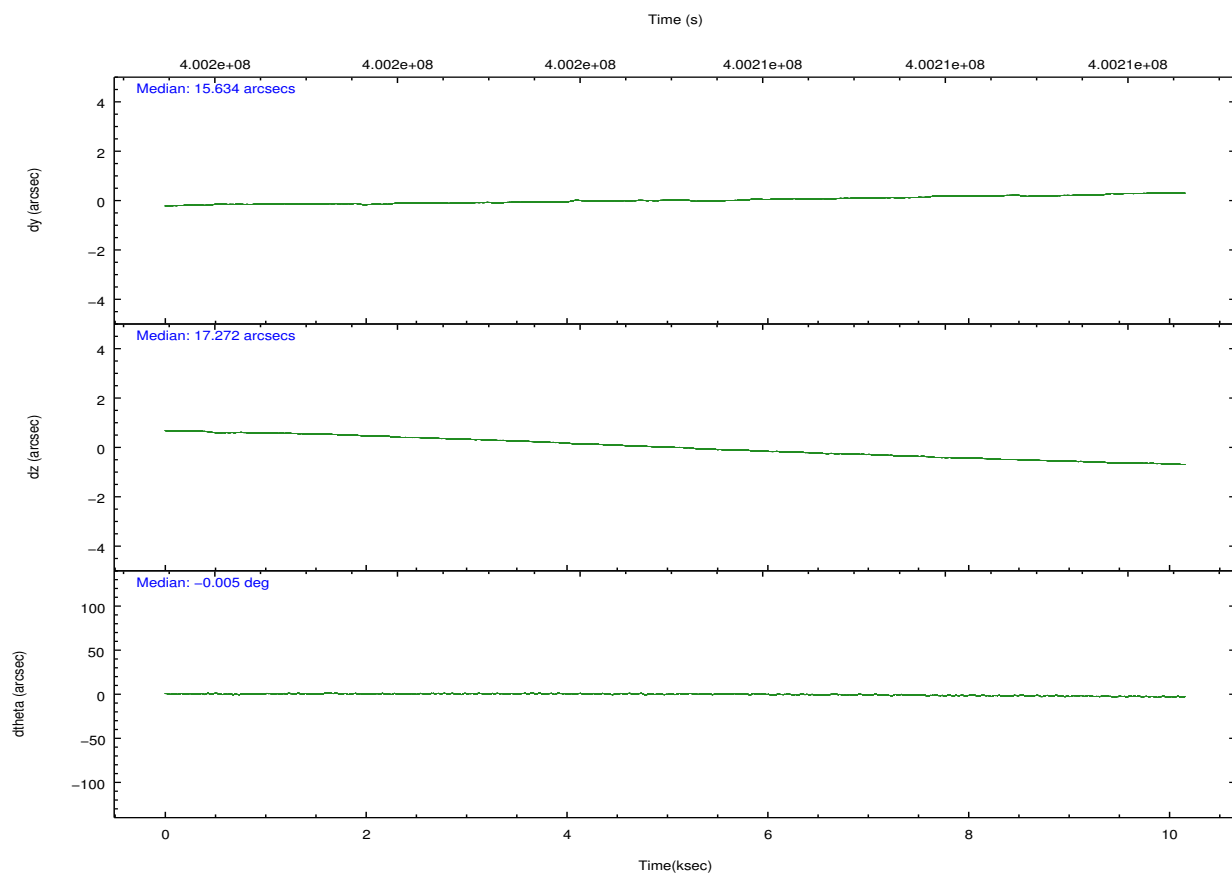
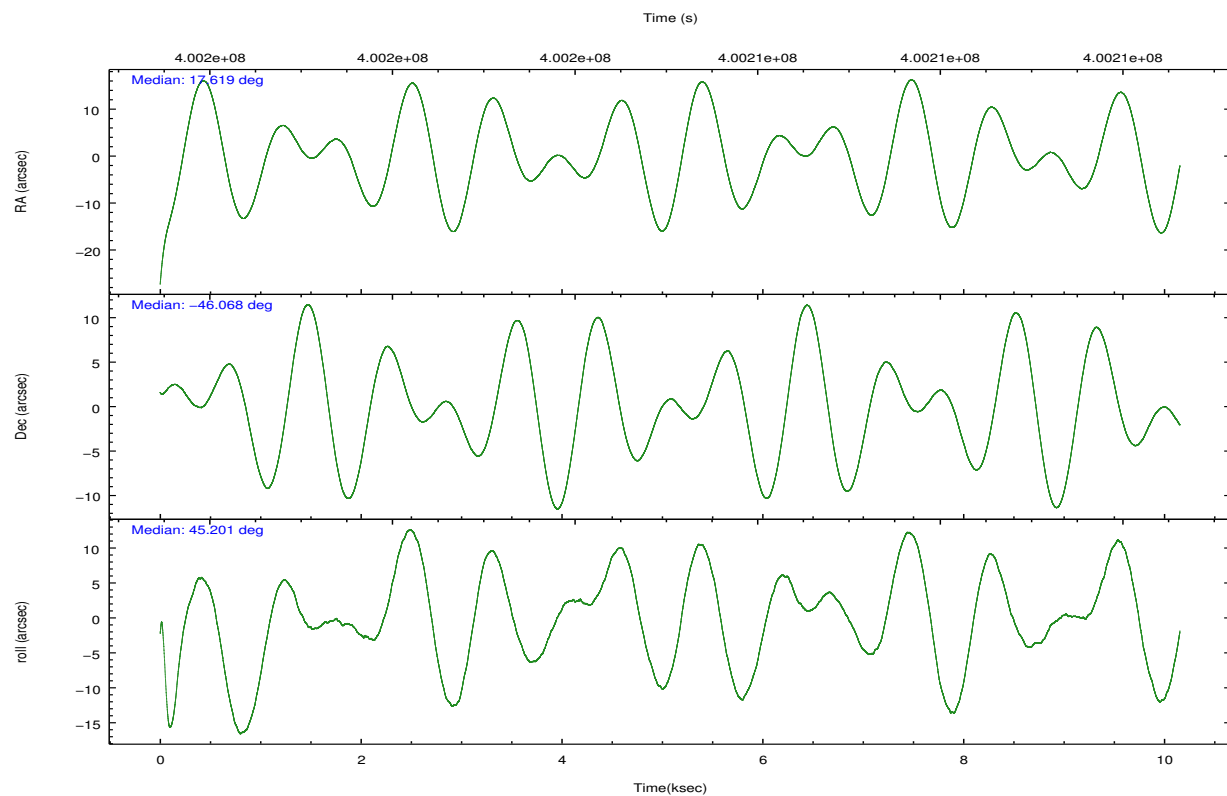
	ccd 7
grade 0 events	1768
	6%
grade 1 events	29
	0%
grade 2 events	2940
	11%
grade 3 events	1483
	5%
grade 4 events	1566
	6%
grade 5 events	2522
	9%
grade 6 events	5783
	22%
grade 7 events	9337
	36%

2.2 Compared Parameters

Parameter	Planned	Actual	Parameter	Planned	Actual
Instrument	ACIS	ACIS	Obspar format version number	7	7
Detector	ACIS-7	ACIS-7	Obspar file type	PREDICTED	ACTUAL
Grating	NONE	NONE	Obspar update status	NONE	UPDATED
Data mode	FAINT	FAINT	Number of optional ACIS chips dropped	0	0
Observation mode	POINTING	POINTING	On-chip summing requested	N	N
[deg] Pointing RA	17.609952	17.61941295449633	Subarray requested	CUSTOM	1/4
[deg] Pointing Dec	-46.094663	-46.06811661313445	Subarray start row	385	385
[deg] Pointing Roll	45.045963	45.20943897002213	Subarray row count	256	256
[mm] SIM focus pos	-0.684267	-0.6828225247311905	Alternating exposures requested	N	N
[mm] SIM defocus	0	0.001444936568705701	[s] Primary exposure time	0.000000	0.8
[mm] SIM translation stage pos	-190.132523	-190.1425803651734			
[mm] SIM translation stage offset	0	0.01005778216563158			
[s] Observation start time (MET)	400200122.184000	400199061.78141			
Observation start date	2010-09-06T22:40:56	2010-09-06T22:24:21			
[s] Observation end time (MET)	400210122.184000	400210853.89451			
Observation end date	2010-09-07T01:27:36	2010-09-07T01:40:53			
Read mode	TIMED	TIMED			

2.3 Aspect



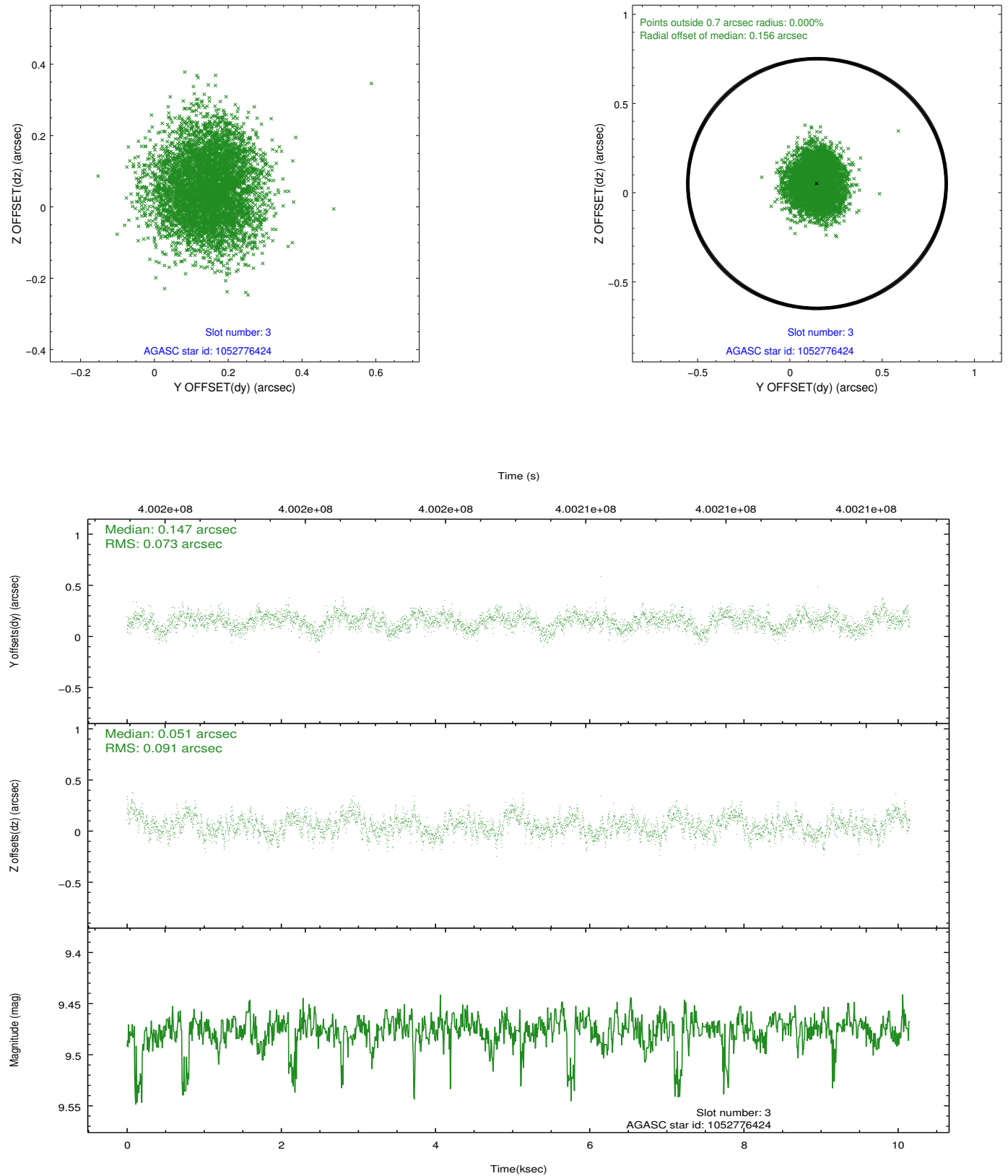


Slot Statistics

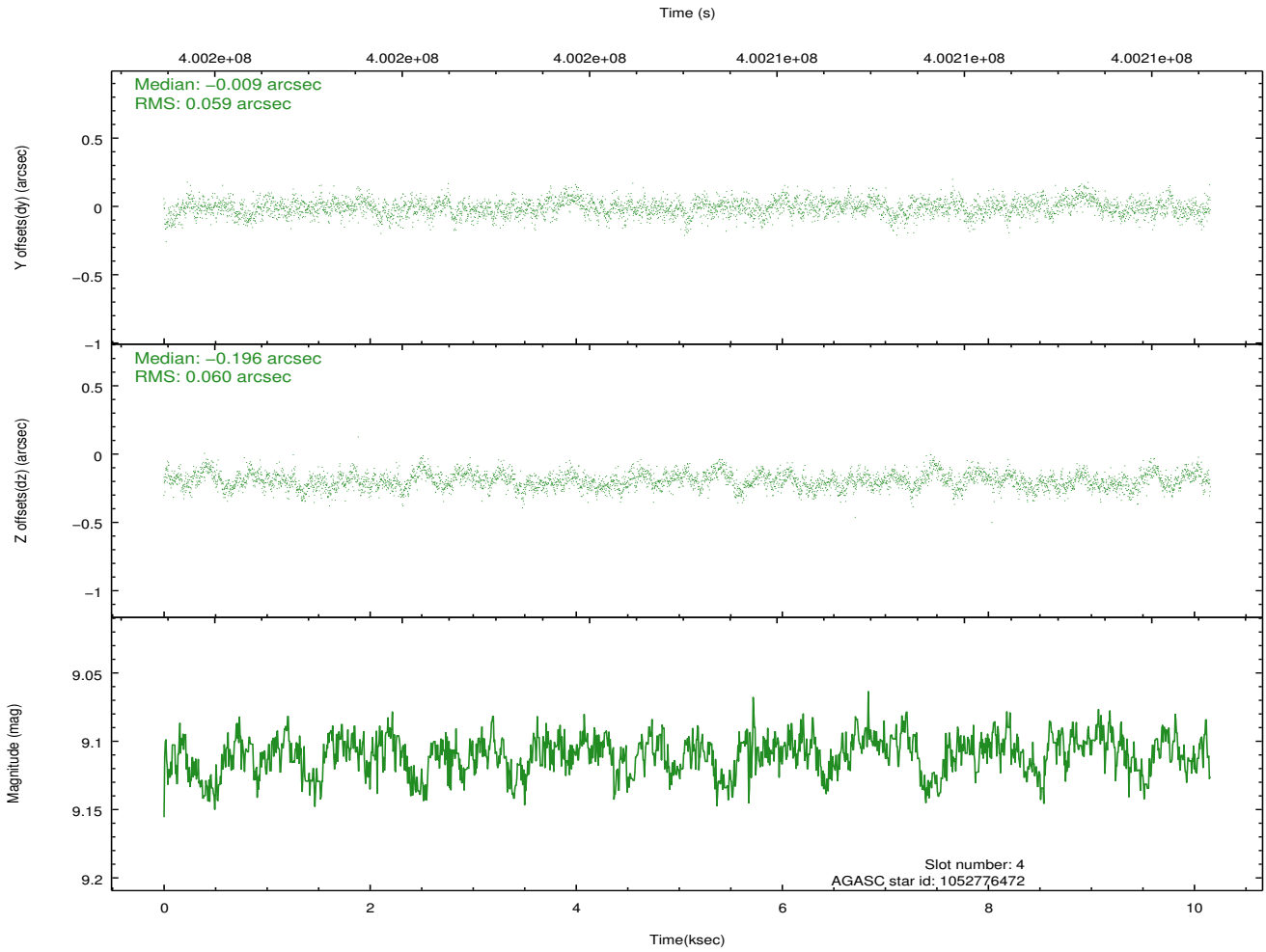
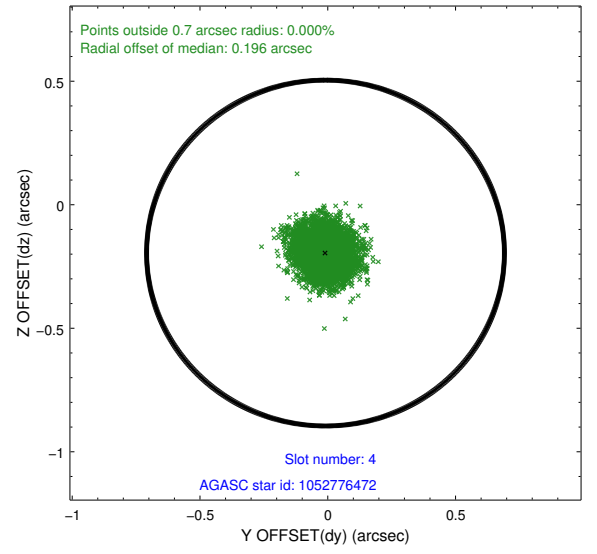
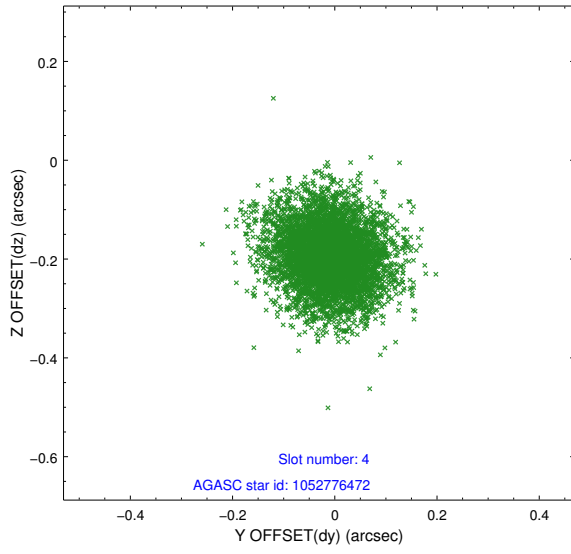
slot	status	id	mag	n_pts	med_dy	med_dz	dr1	dr2	ra	dec	mean_y	mean_z
0	FID	ACIS-S-1	6.96	2477	0.101	-0.077	0.029	0.039	0.000000	0.000000	927.47	-1734.38
1	FID	ACIS-S-5	7.01	2477	-0.135	0.071	0.008	0.012	0.000000	0.000000	-1821.45	162.83
2	FID	ACIS-S-6	7.12	2477	0.012	0.018	0.033	0.044	0.000000	0.000000	392.41	807.29
3	GUIDE	1052776424	9.48	4950	0.147	0.051	0.125	0.197	17.993210	-46.428047	-178.60	-1522.77
4	GUIDE	1052776472	9.11	4944	-0.009	-0.196	0.088	0.145	18.193201	-45.649976	2166.48	88.31
5	GUIDE	1052776600	9.64	4951	-0.148	0.070	0.171	0.292	17.241655	-45.618812	555.71	1864.99
6	GUIDE	1052777408	8.29	4955	-0.009	-0.088	0.074	0.116	16.648061	-45.918404	-1263.45	2142.92
7	GUIDE	1052778688	9.98	4940	0.029	0.172	0.137	0.224	16.828978	-45.979245	-1093.23	1669.75

2.4 Star Slots

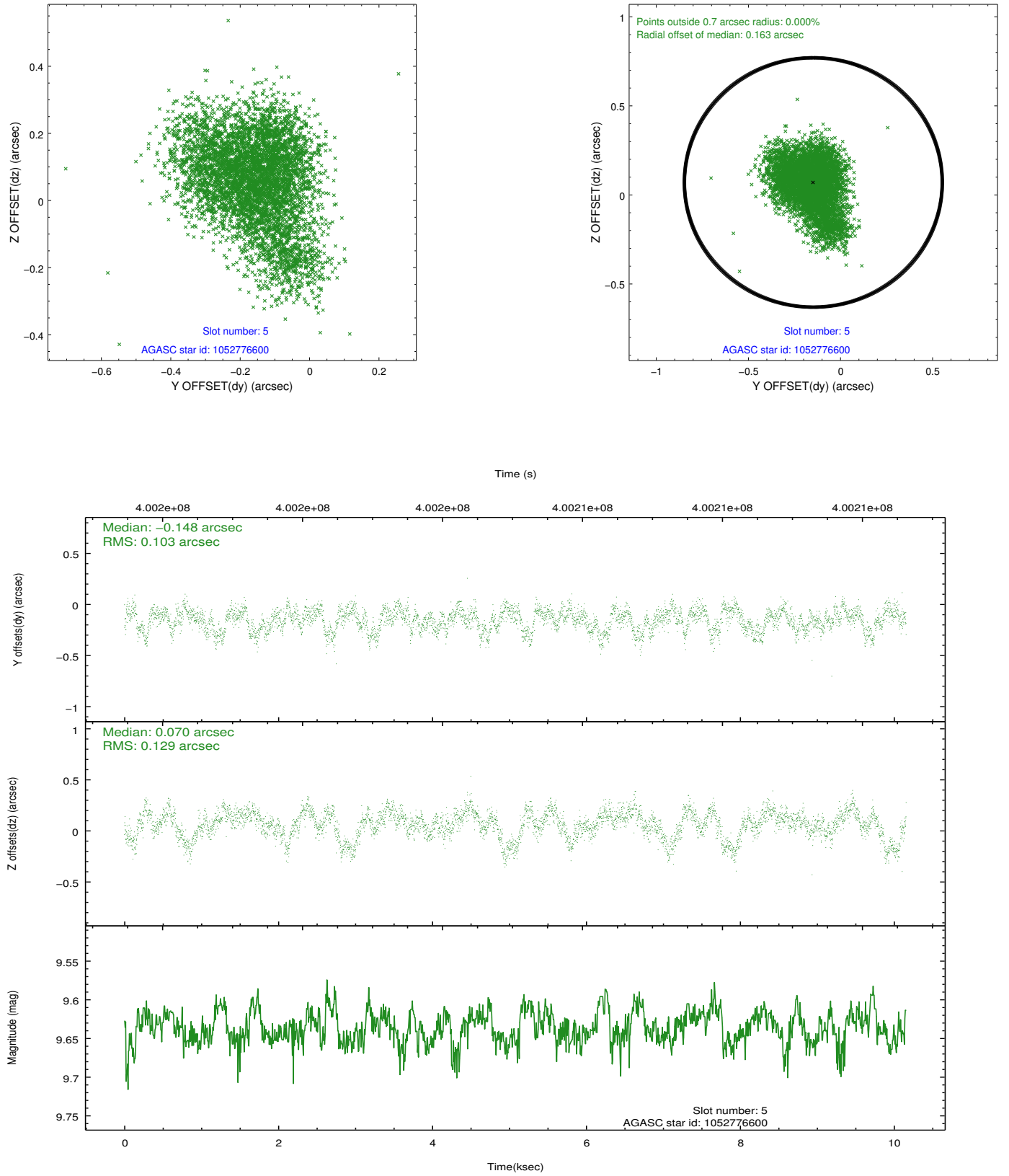
2.4.1 Slot 3



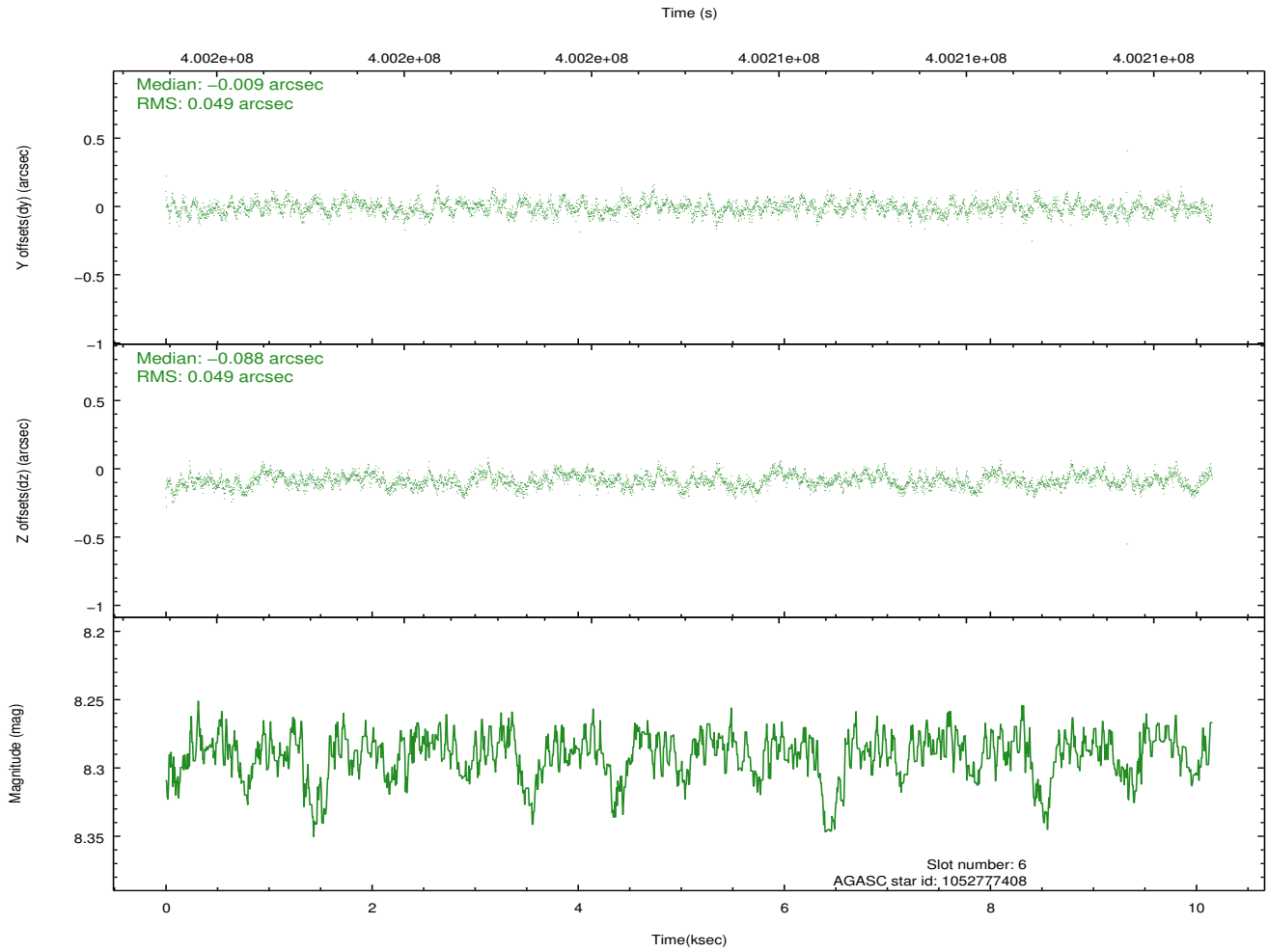
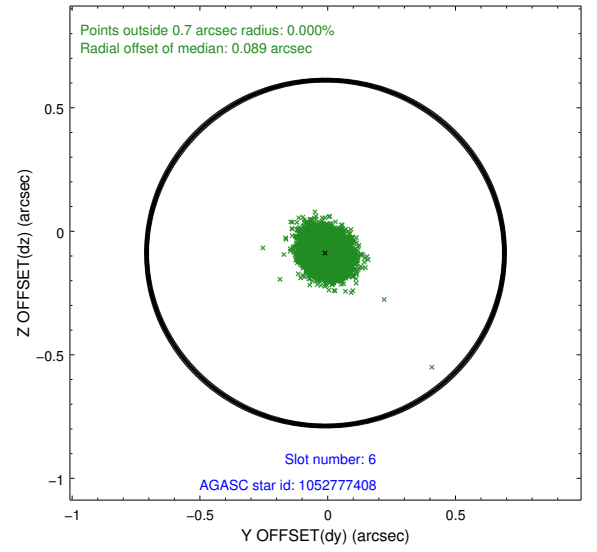
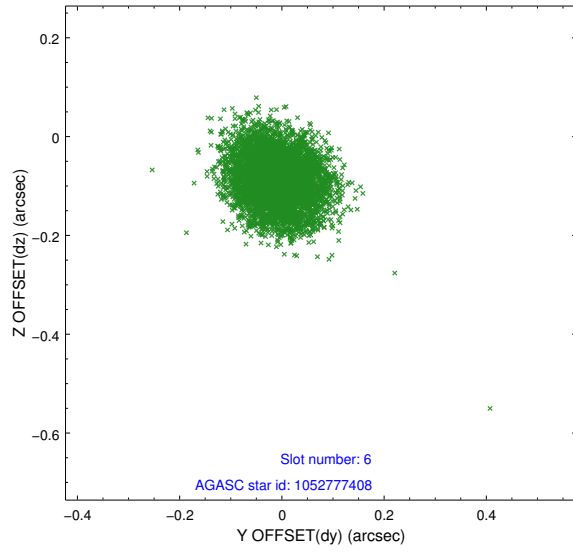
2.4.2 Slot 4



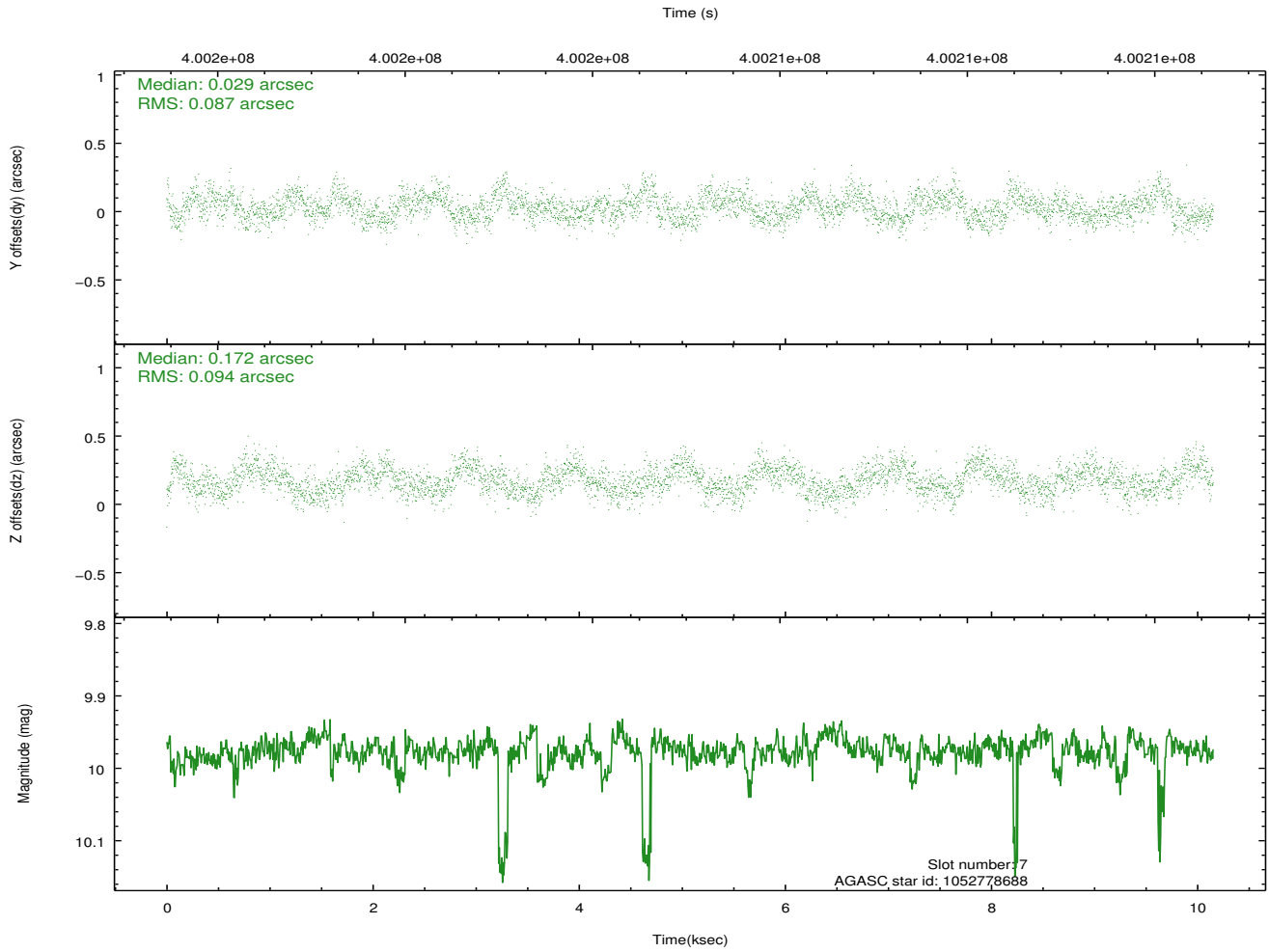
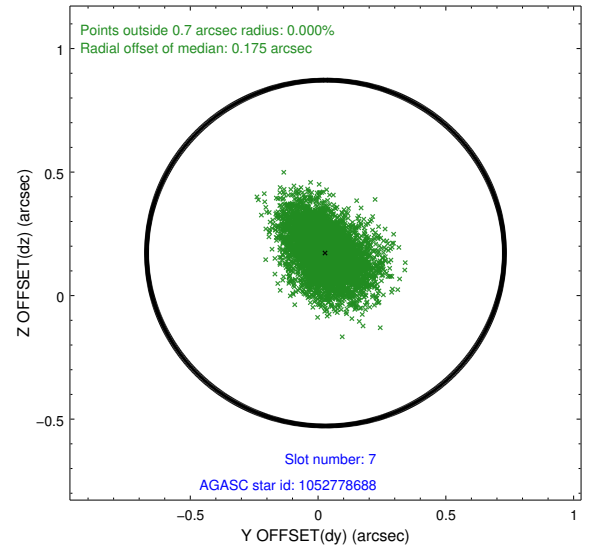
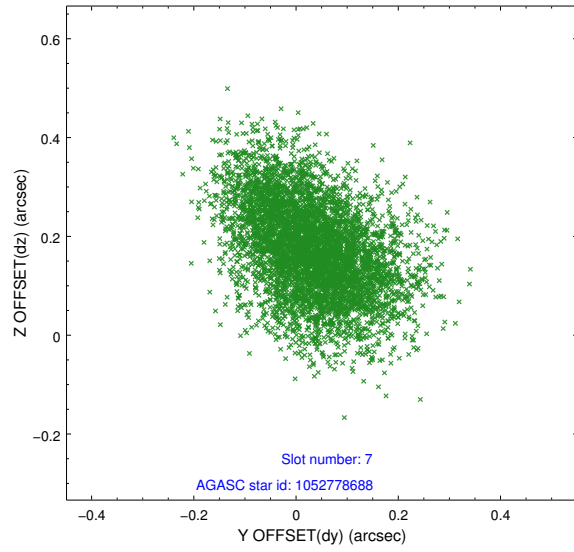
2.4.3 Slot 5



2.4.4 Slot 6

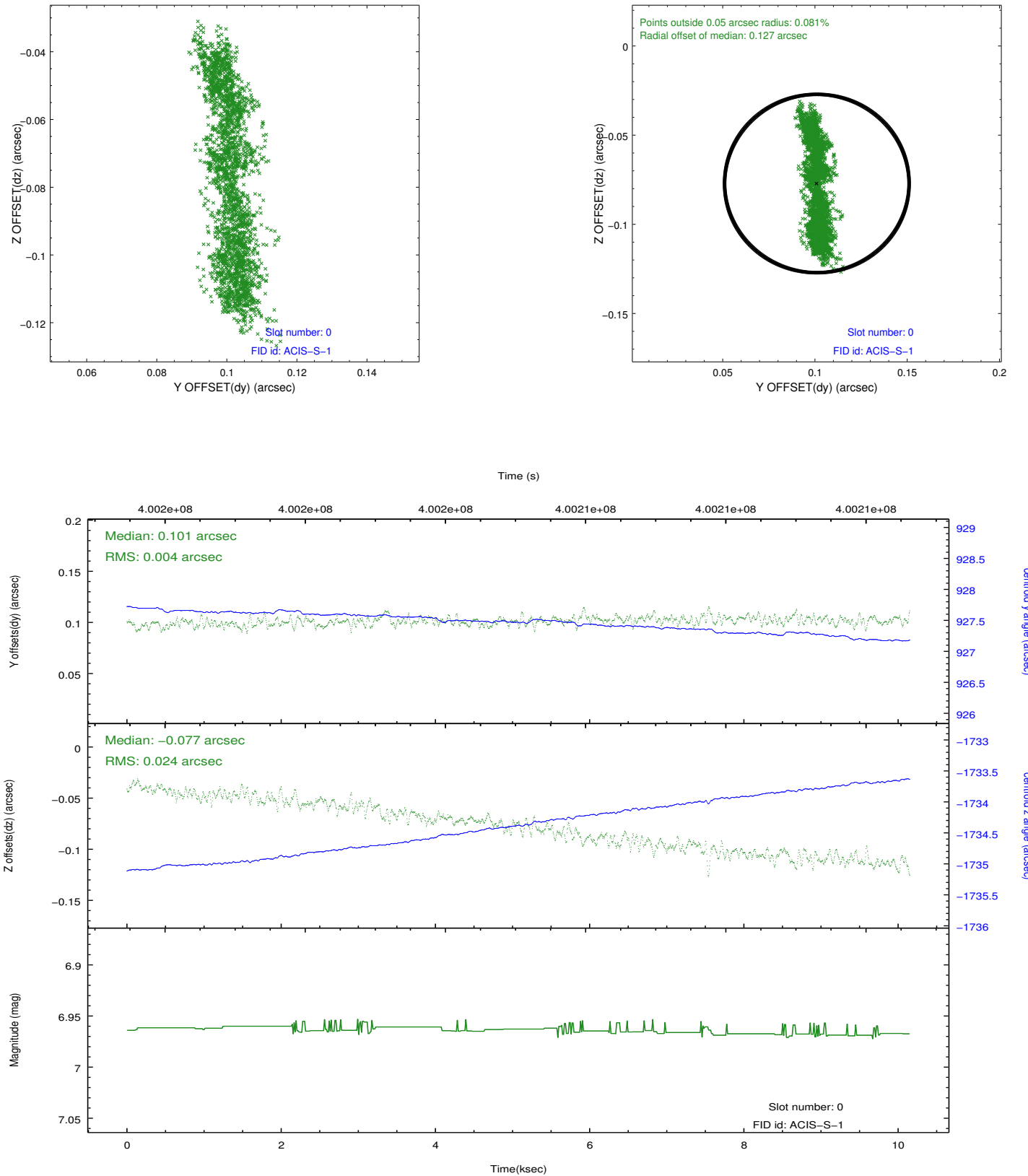


2.4.5 Slot 7

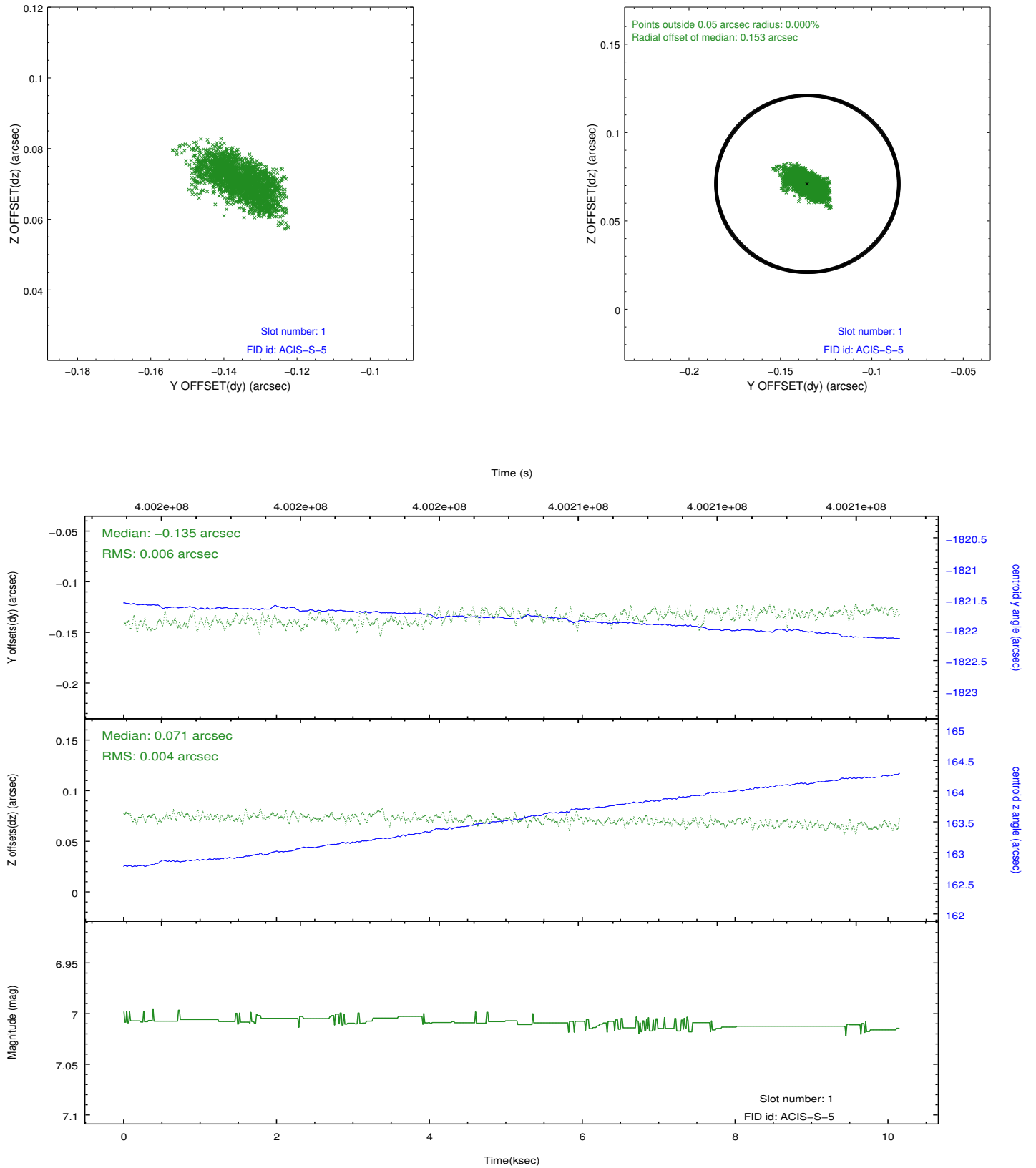


2.5 FID Slots

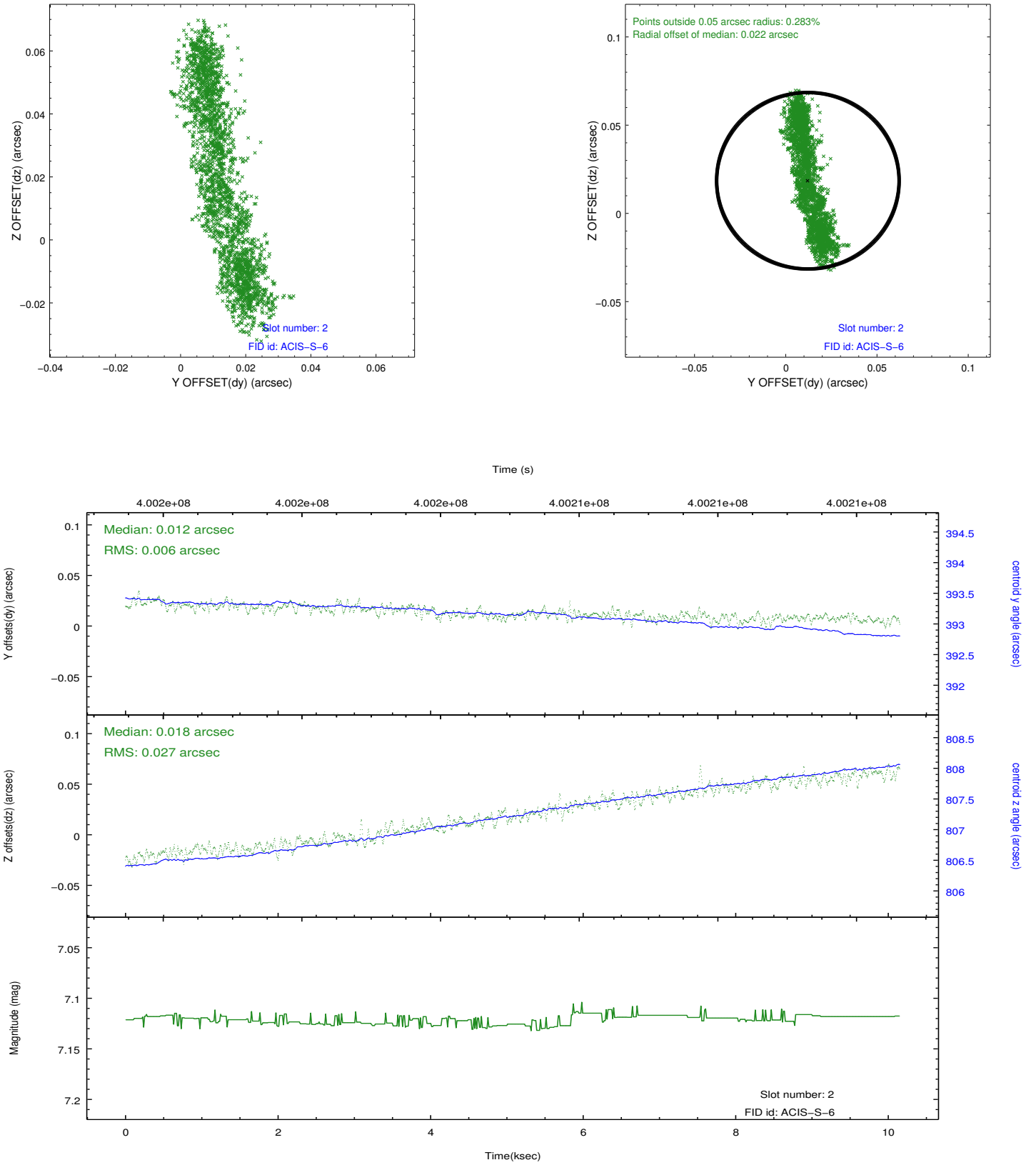
2.5.1 Slot 0



2.5.2 Slot 1



2.5.3 Slot 2



A Summary

A.1 Status

V&V Scientist	Jen Lauer
V&V Date (YYYY-MM-DD)	2012.07.10
V&V Edition	1
V&V Disposition and Status	OK
V&V Charge Time	10.026400149465

A.2 Comments