

V&V Reference Report

L2 ASCDS Version : 8.4.5

Observation 11083 - L2 Version 2
Chandra X-Ray Center

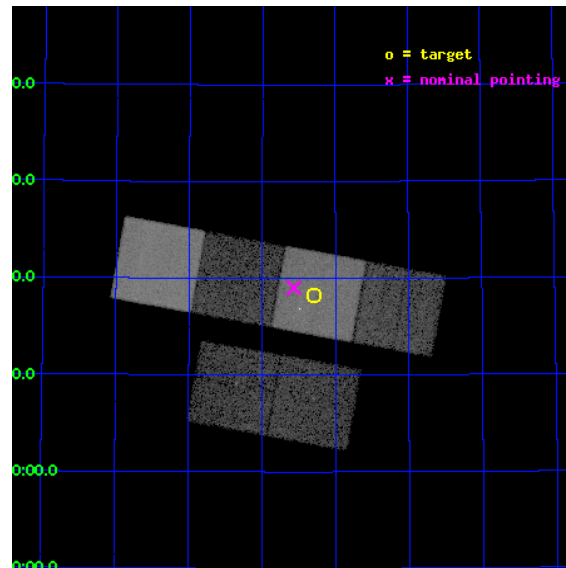
L2 Processing Date : Jun 23 2012

Contents

1	Front	2
2	OBI	3
2.1	OBI	3
2.1.1	Images	3
2.1.2	Bias	3
2.1.3	Parameters	4
2.1.4	Events	4
2.2	Compared Parameters	5
2.3	Aspect	6
2.4	Star Slots	9
2.4.1	Slot 3	9
2.4.2	Slot 4	10
2.4.3	Slot 5	11
2.4.4	Slot 6	12
2.4.5	Slot 7	13
2.5	FID Slots	14
2.5.1	Slot 0	14
2.5.2	Slot 1	15
2.5.3	Slot 2	16
A	Summary	17
A.1	Status	17
A.2	Comments	17

1 Front

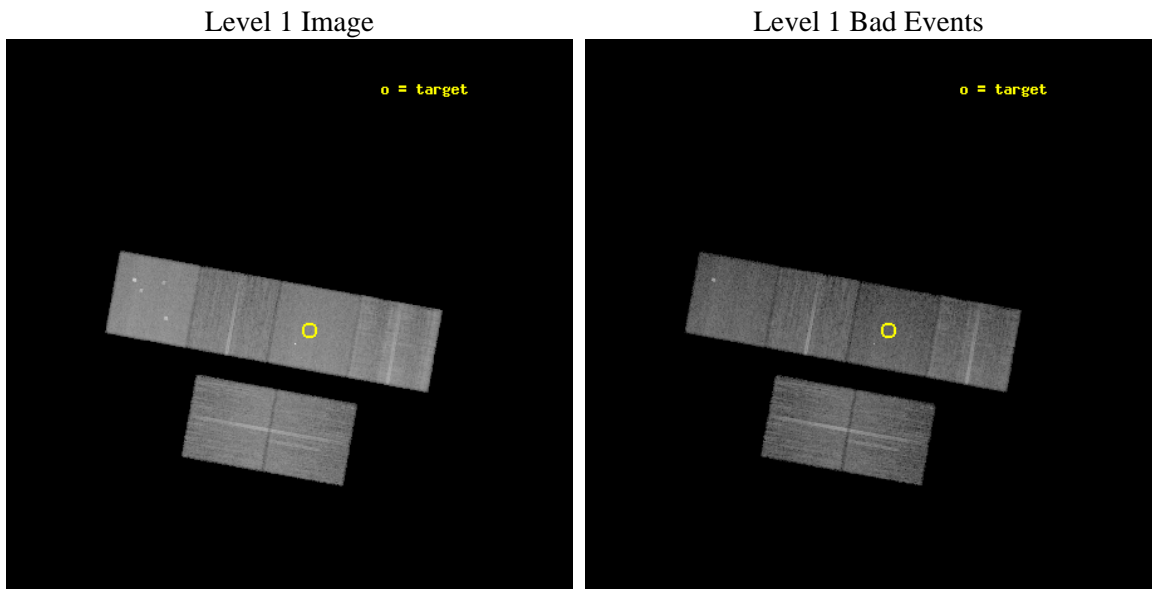
seq_num	401118	Sequence number
obs_id	11083	Observation id
title	X-Ray Binaries In a Nearby Star-Burst Galaxy: A New Lab for Astrophysics.	Proposal title
observer	Dr Silas Laycock	Principal investigator
object	IC 10	Source name
dtcycle	0	
cycle	P	events from which exps? Prim/Second/Both
ra_targ	5.072083	Observer's specified target RA [deg]
dec_targ	59.303778	Observer's specified target Dec [deg]
ra_nom	5.1419735953114	Nominal RA [deg]
dec_nom	59.317028062395	Nominal Dec [deg]
roll_nom	10.317481641618	Nominal Roll [deg]
revision	2	Processing version of data
ontime	14921.599944472	Sum of GTIs [s]
livetime	14732.653661267	Livetime [s]
ontime2	14918.358954251	Sum of GTIs [s]
ontime3	14915.117983937	Sum of GTIs [s]
ontime5	14921.599944472	Sum of GTIs [s]
ontime6	14918.358954251	Sum of GTIs [s]
ontime7	14921.599944472	Sum of GTIs [s]
ontime8	14918.359093666	Sum of GTIs [s]
l2events	186312	Number of level 2 events



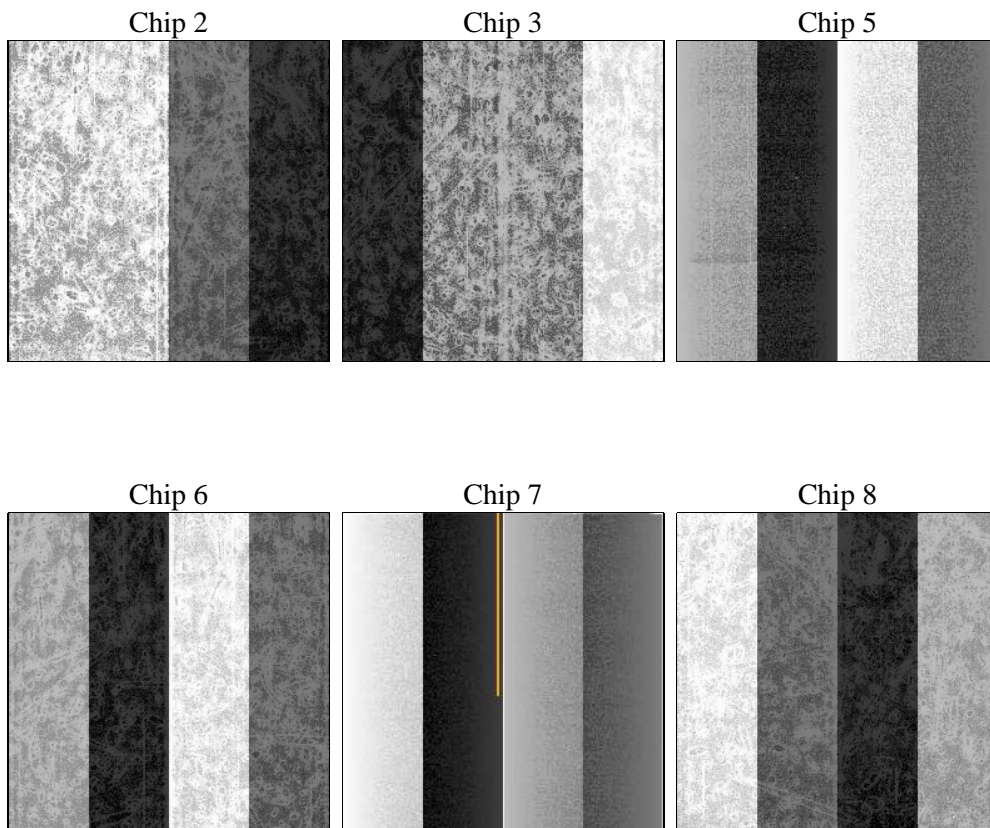
2 OBI

2.1 OBI

2.1.1 Images



2.1.2 Bias



2.1.3 Parameters

obi_num	0	Obi number	sched_exp_time	14745.117000	[s] Scheduled observation exposure time
ascdsver	8.4.5	Processing system revision	ontime	14921.599944472	Sum of GTIs [s]
caldsver	4.4.10	 	ontime2	14918.358954251	Sum of GTIs [s]
date	2012-06-23T18:41:02	Date and time of file creation	ontime3	14915.117983937	Sum of GTIs [s]
revision	2	Processing version of data	ontime5	14921.599944472	Sum of GTIs [s]
			ontime6	14918.358954251	Sum of GTIs [s]
			ontime7	14921.599944472	Sum of GTIs [s]
			ontime8	14918.359093666	Sum of GTIs [s]
			l1events	843443	Number of level 1 events

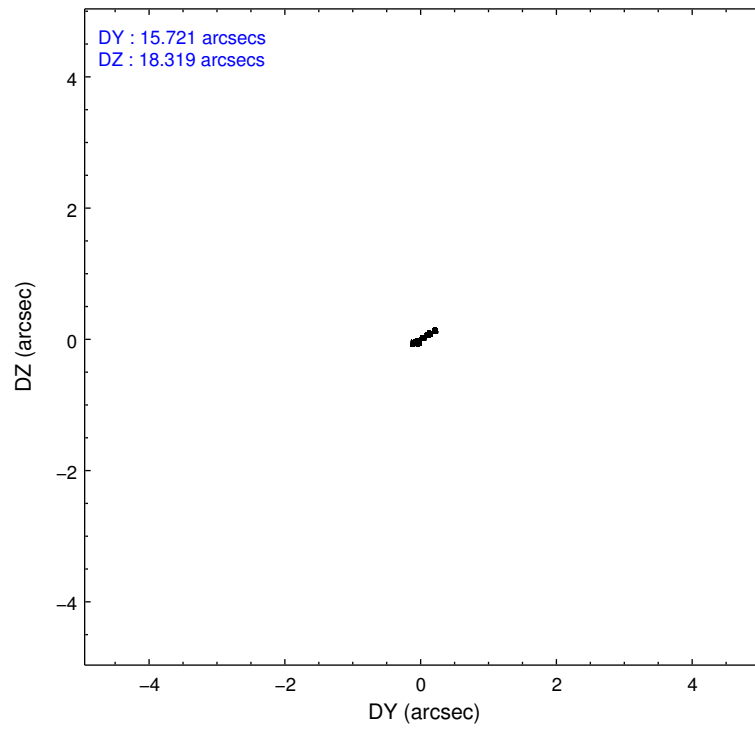
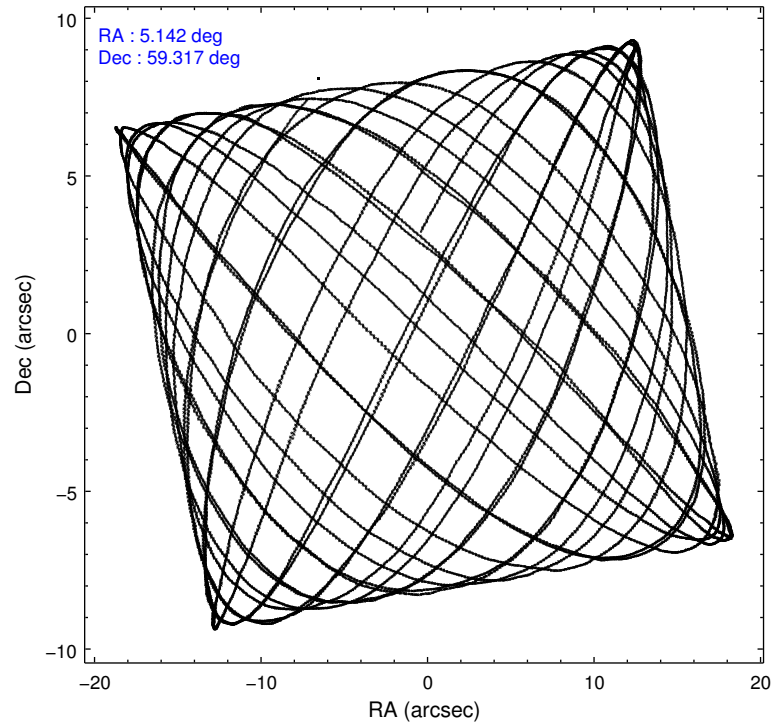
2.1.4 Events

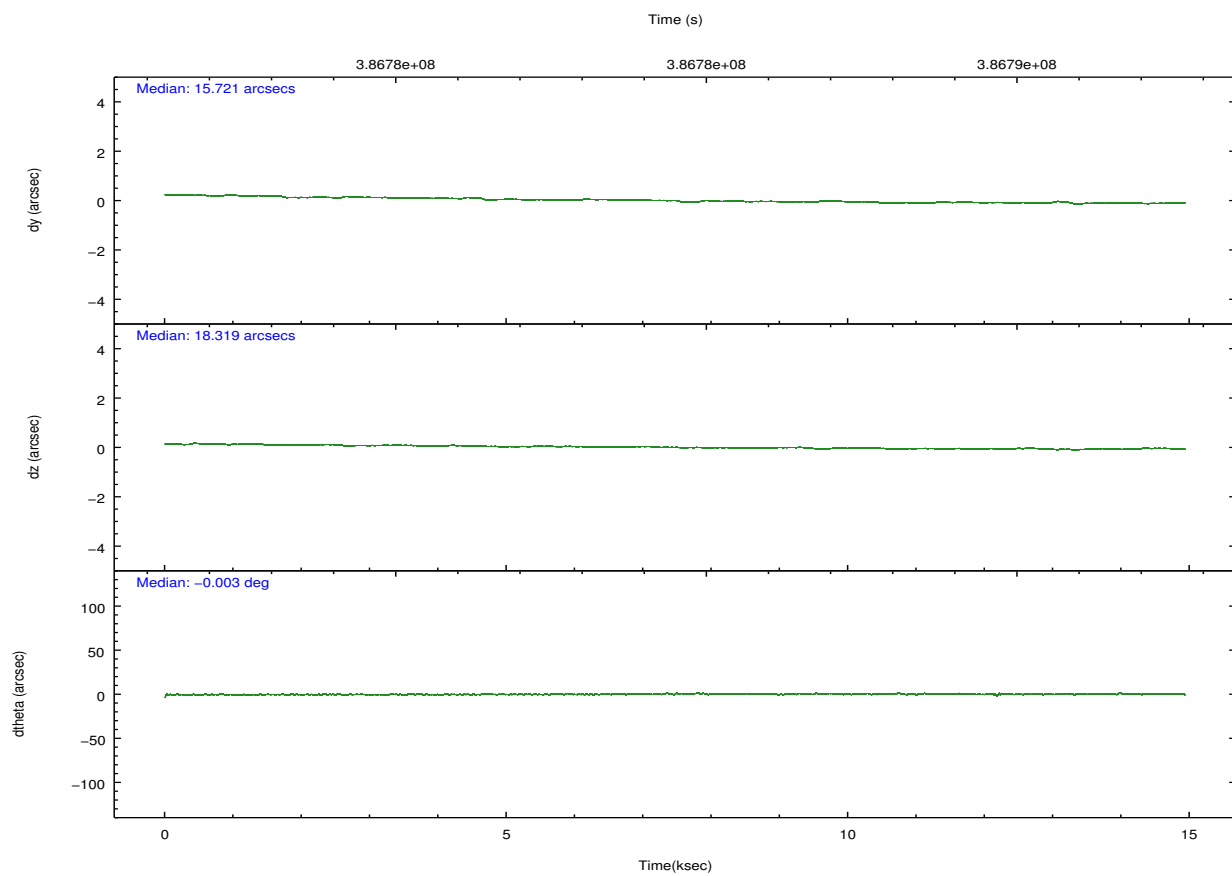
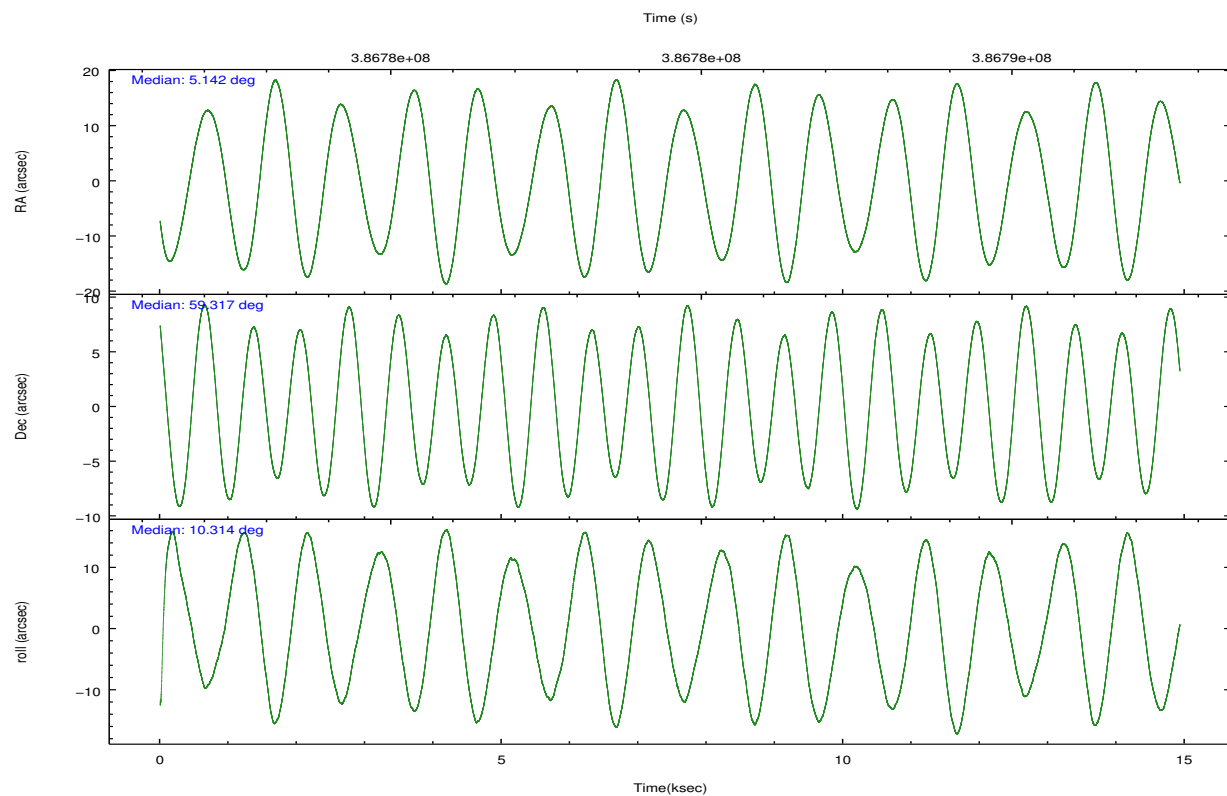
	ccd 2	ccd 3	ccd 5	ccd 6	ccd 7	ccd 8		ccd 2	ccd 3	ccd 5	ccd 6	ccd 7	ccd 8
level 1 events	126902	113593	181089	115675	146584	159600	grade 0 events	4761	4283	9329	4776	6553	14228
rejected events	114408	102296	95470	103061	82150	117009		3%	3%	5%	4%	4%	8%
rejected %	90%	90%	52%	89%	56%	73%	grade 1 events	63	52	343	59	262	185
								0%	0%	0%	0%	0%	0%
							grade 2 events	3259	2617	27594	2906	13934	9625
								2%	2%	15%	2%	9%	6%
							grade 3 events	1334	1311	3658	1404	6062	5199
								1%	1%	2%	1%	4%	3%
							grade 4 events	1345	1346	3322	1408	6052	4864
								1%	1%	1%	1%	4%	3%
							grade 5 events	4419	5095	14248	5086	15040	7682
								3%	4%	7%	4%	10%	4%
							grade 6 events	2475	2400	46583	2783	35225	11091
								1%	2%	25%	2%	24%	6%
							grade 7 events	109246	96489	76012	97253	63456	106726
								86%	84%	41%	84%	43%	66%

2.2 Compared Parameters

Parameter	Planned	Actual	Parameter	Planned	Actual
Instrument	ACIS	ACIS	Obspar format version number	7	7
Detector	ACIS-235678	ACIS-235678	Obspar file type	PREDICTED	ACTUAL
Grating	NONE	NONE	Obspar update status	NONE	UPDATED
Data mode	VFAINT	VFAINT	CCD I0 on	N	N
Observation mode	POINTING	POINTING	CCD I1 on	N	N
[deg] Pointing RA	5.101619	5.141973595311384	CCD I2 on	O2	Y
[deg] Pointing Dec	59.299036	59.31702806239514	CCD I3 on	O3	Y
[deg] Pointing Roll	10.195560	10.31748164161766	CCD S0 on	N	N
[mm] SIM focus pos	-0.684267	-0.6828225247311905	CCD S1 on	O1	Y
[mm] SIM defocus	0	0.001444936568705701	CCD S2 on	O5	Y
[mm] SIM translation stage pos	-190.132523	-190.1425803651734	CCD S3 on	Y	Y
[mm] SIM translation stage offset	0	0.01005778216563158	CCD S4 on	O4	Y
[s] Observation start time (MET)	386777217.184000	386775727.72148	CCD S5 on	N	N
Observation start date	2010-04-04T14:05:51	2010-04-04T13:42:07	Number of optional ACIS chips dropped	0	0
[s] Observation end time (MET)	386791962.184000	386792189.22231	On-chip summing requested	N	N
Observation end date	2010-04-04T18:11:36	2010-04-04T18:16:29	Subarray requested	NONE	NONE
Read mode	TIMED	TIMED	Alternating exposures requested	N	N
			[s] Primary exposure time	0.000000	3.2

2.3 Aspect



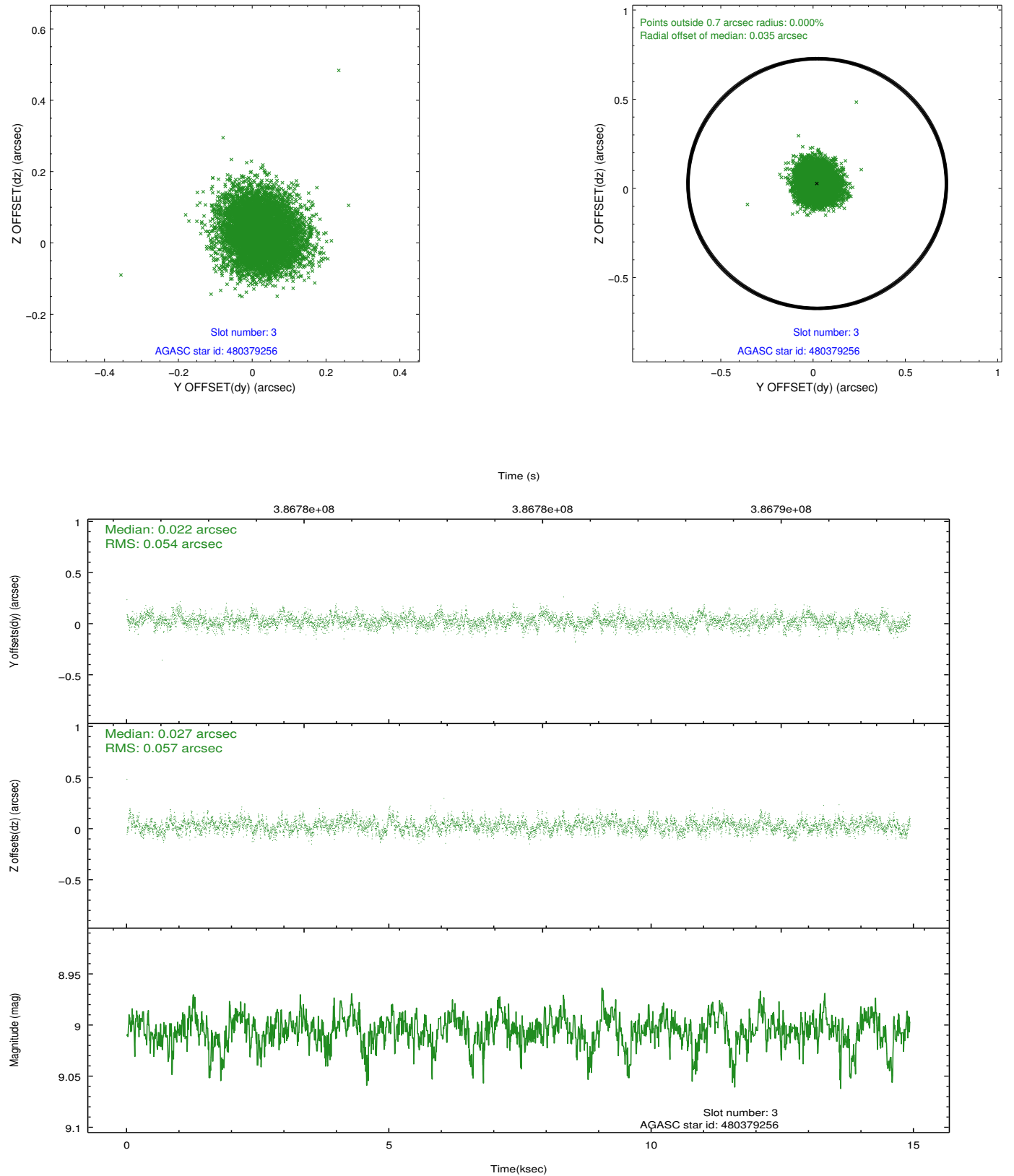


Slot Statistics

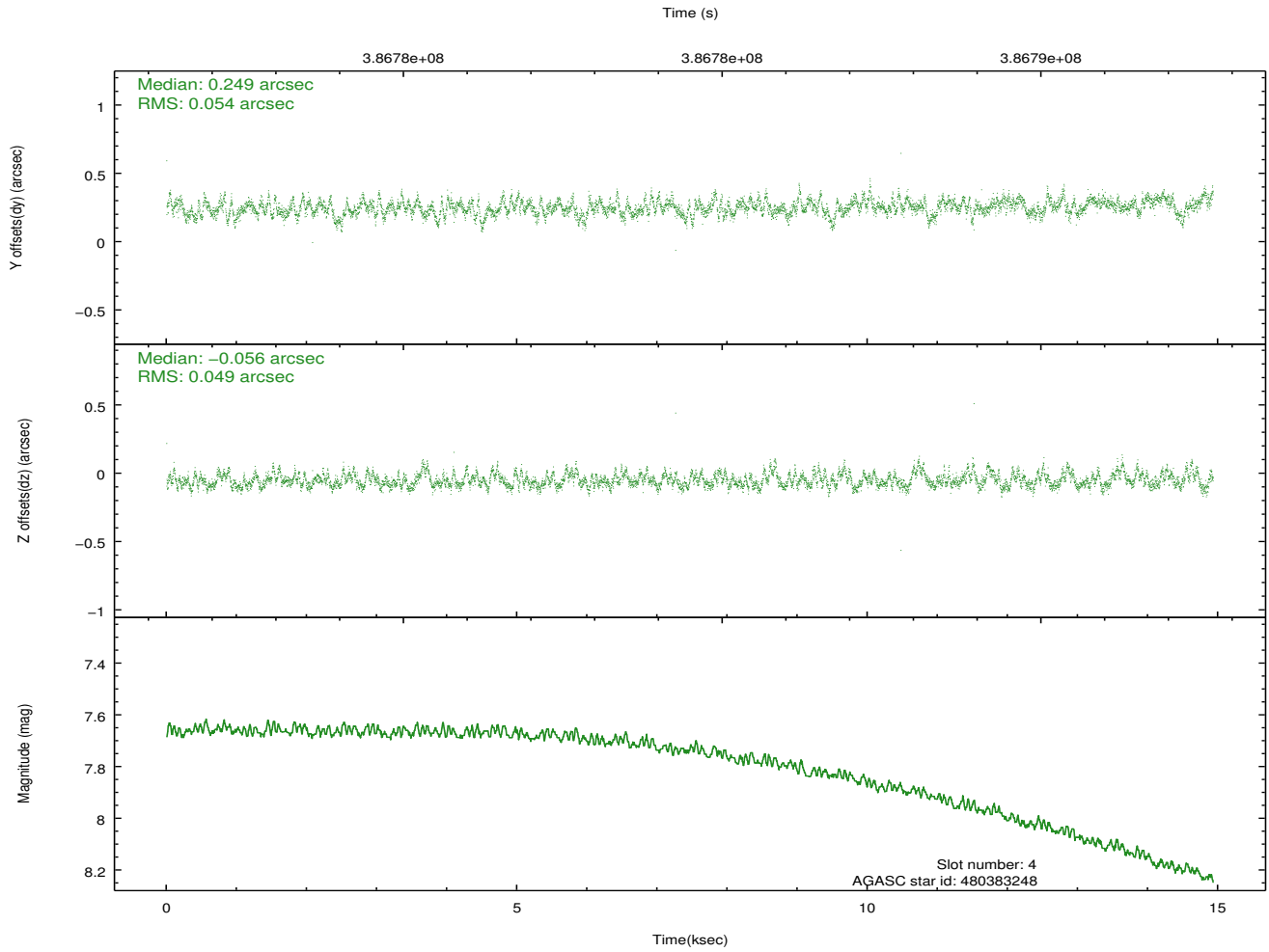
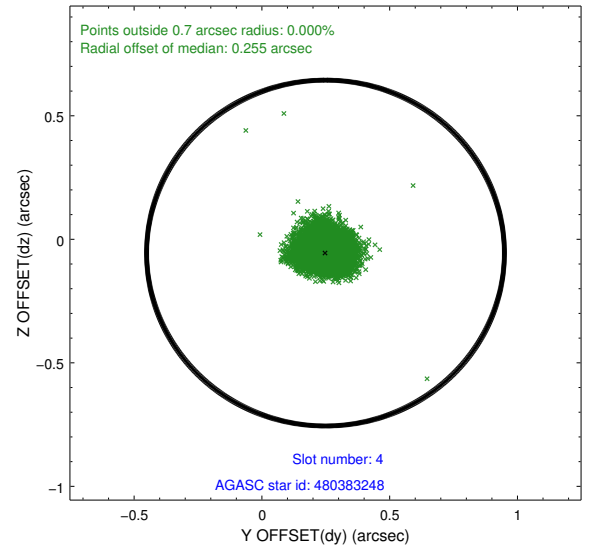
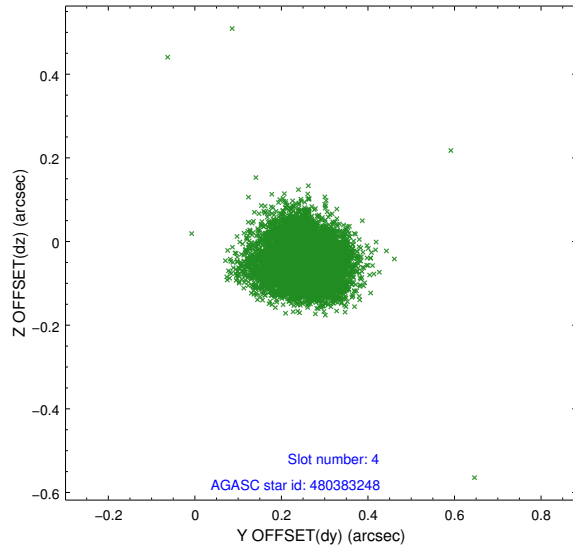
slot	status	id	mag	n_pts	med_dy	med_dz	dr1	dr2	ra	dec	mean_y	mean_z
0	FID	ACIS-S-2	6.87	3642	-0.067	-0.045	0.007	0.011	0.000000	0.000000	-768.84	-1739.77
1	FID	ACIS-S-4	6.96	3641	0.159	0.044	0.005	0.010	0.000000	0.000000	2144.57	168.41
2	FID	ACIS-S-5	6.99	3642	-0.123	0.010	0.007	0.011	0.000000	0.000000	-1821.30	162.49
3	GUIDE	480379256	9.01	7281	0.022	0.027	0.084	0.135	5.631259	59.673209	1187.07	1159.20
4	GUIDE	480383248	7.74	7283	0.249	-0.056	0.076	0.122	4.828098	59.139041	-598.17	-476.19
5	GUIDE	480388568	8.32	7281	-0.081	-0.066	0.062	0.100	3.952528	59.440255	-1976.70	890.47
6	GUIDE	480392088	9.13	7281	-0.055	0.062	0.103	0.162	4.376217	58.674347	-1732.99	-1965.57
7	GUIDE	480391984	9.10	7273	-0.137	0.033	0.085	0.137	6.240867	58.961592	1869.40	-1552.11

2.4 Star Slots

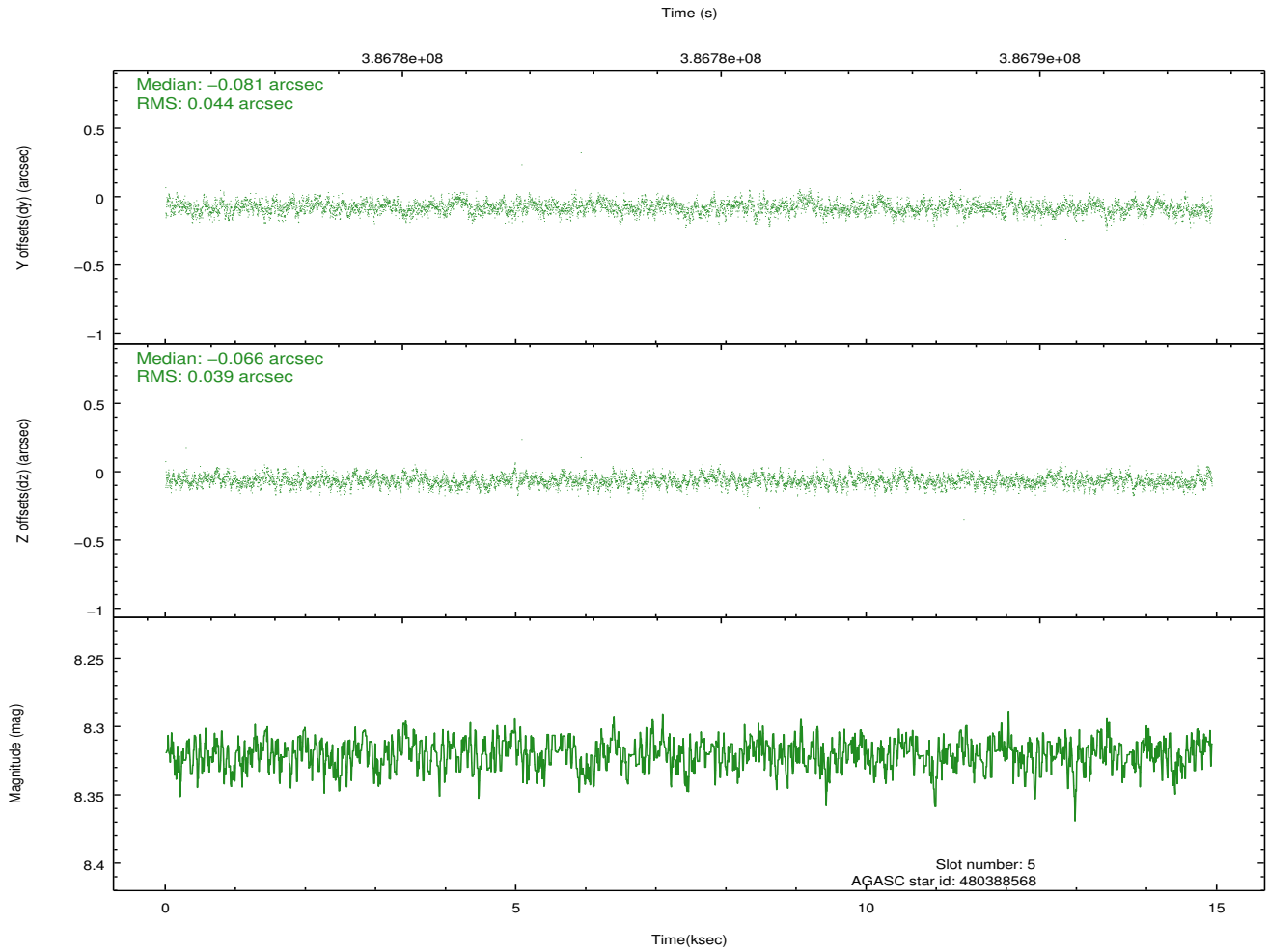
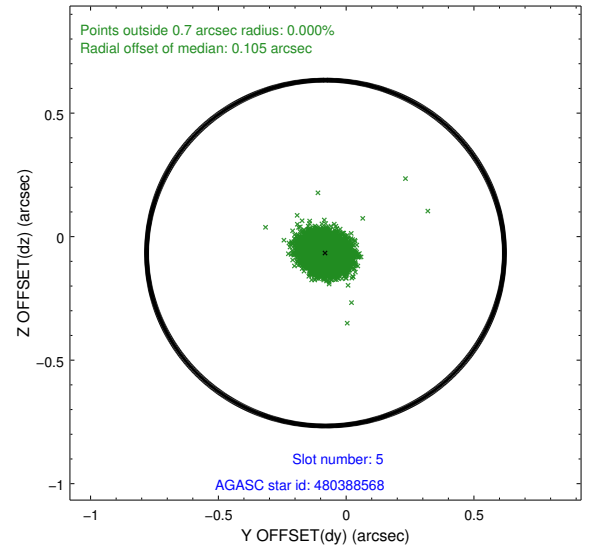
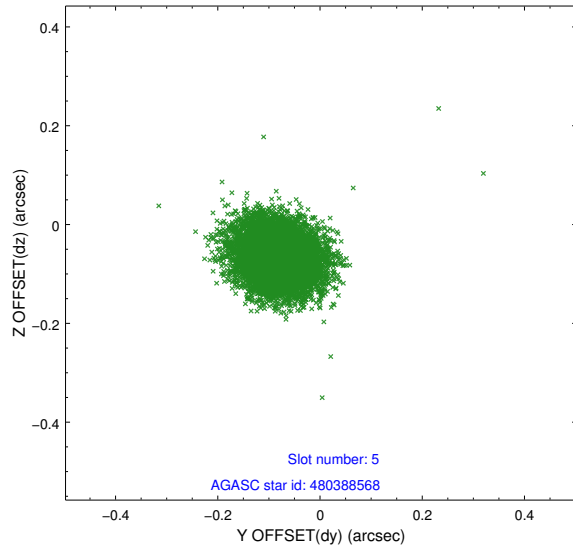
2.4.1 Slot 3



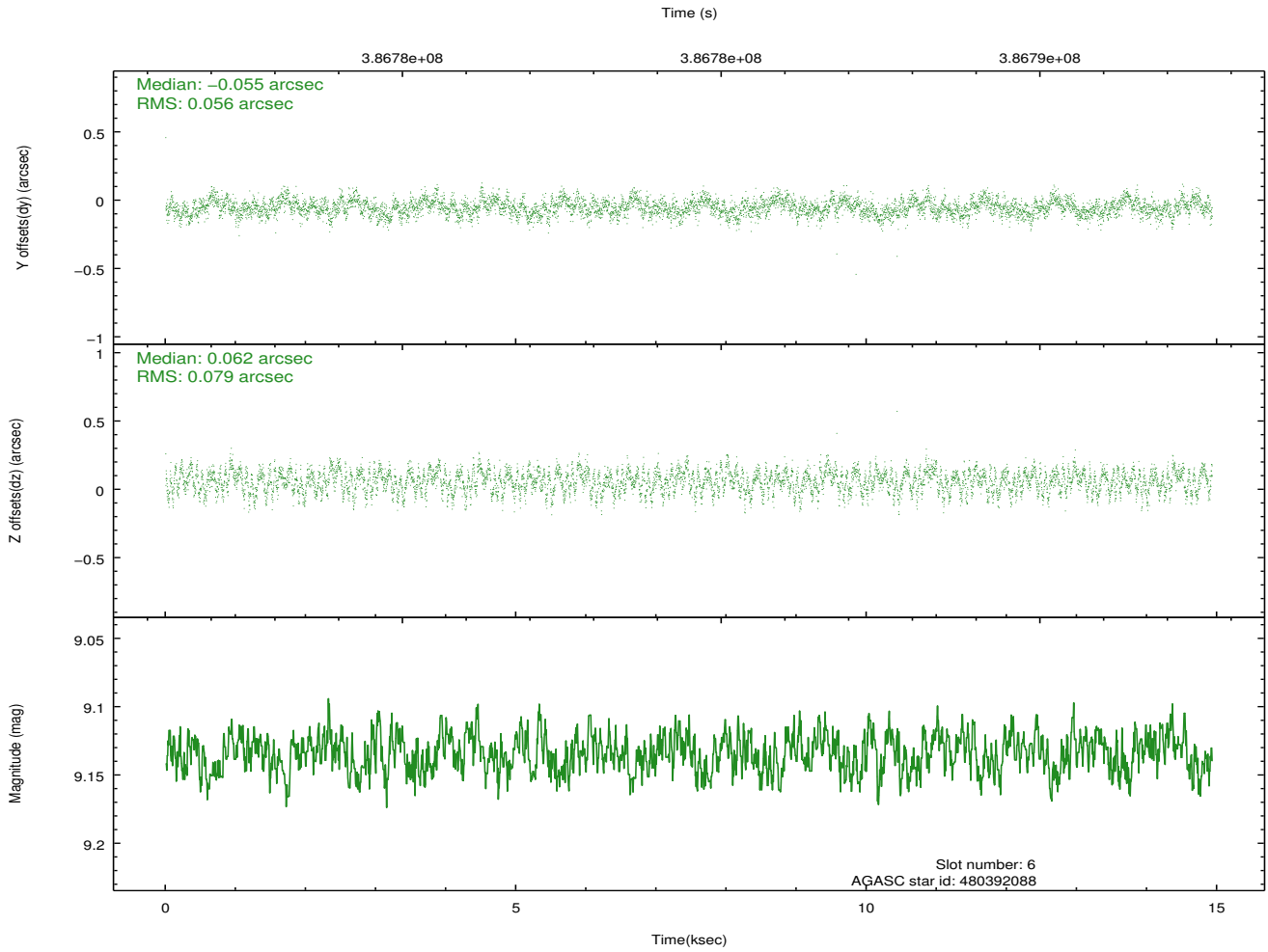
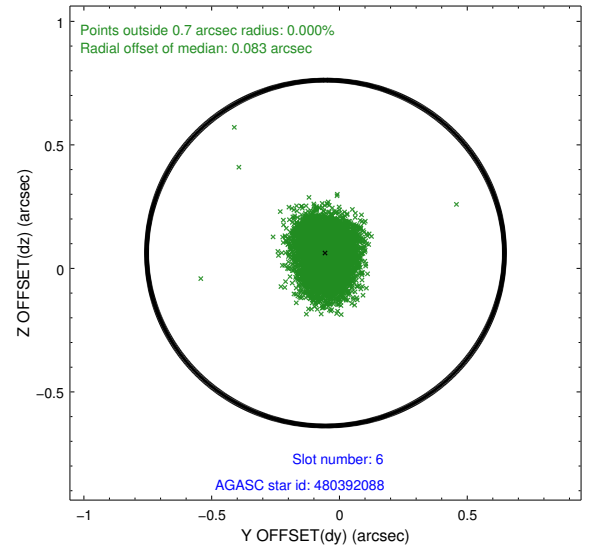
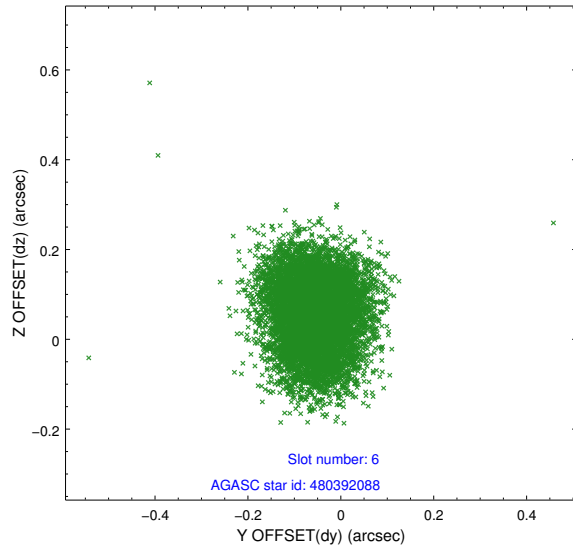
2.4.2 Slot 4



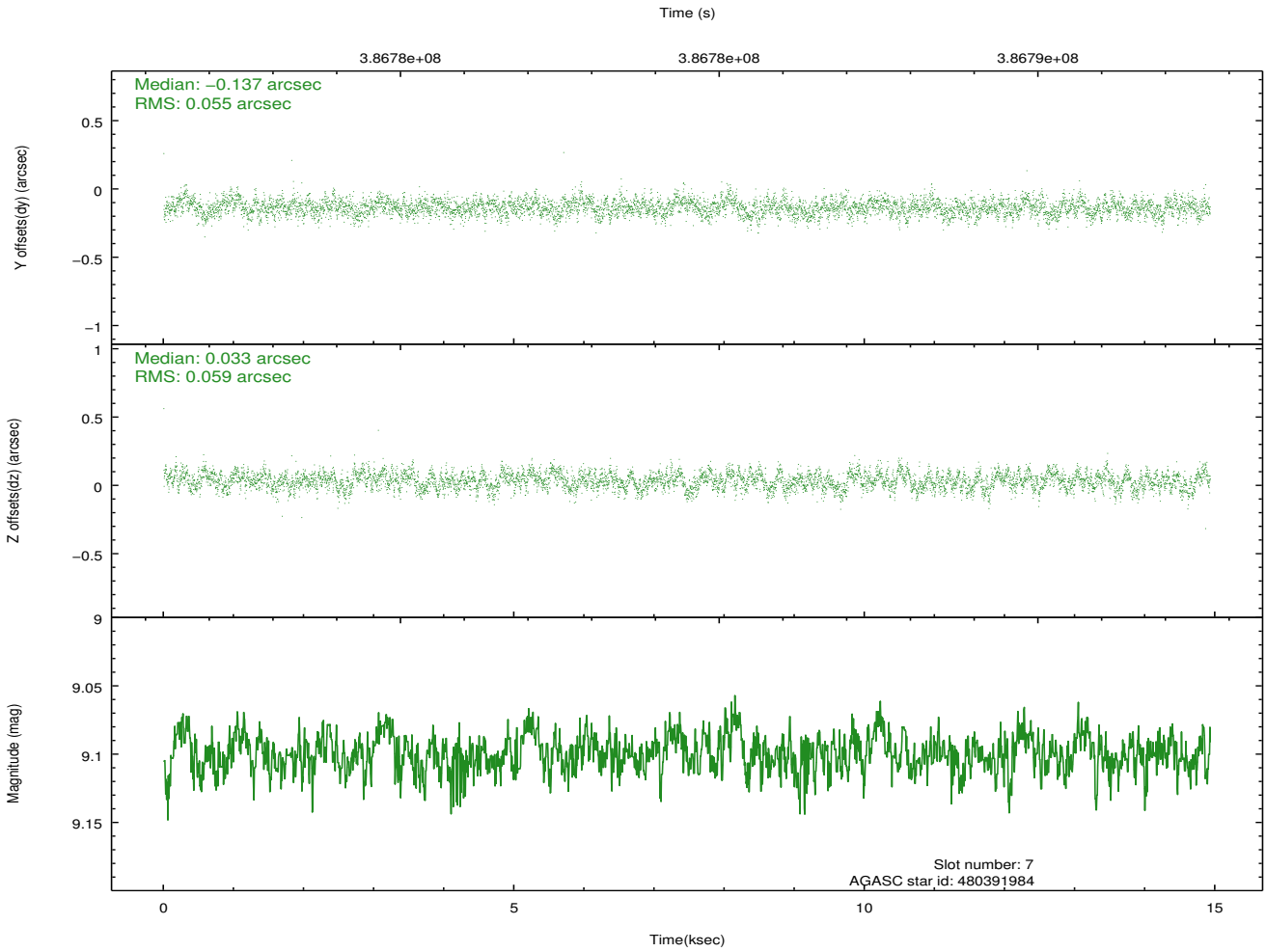
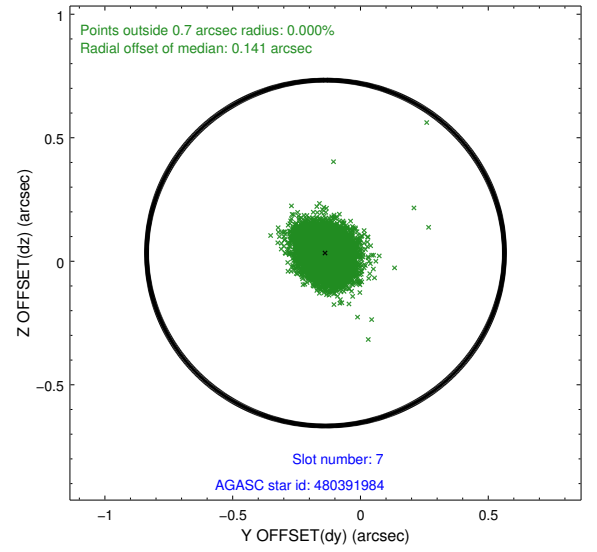
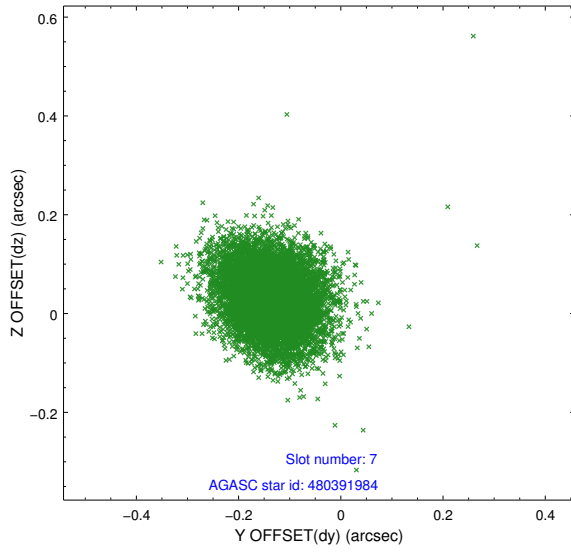
2.4.3 Slot 5



2.4.4 Slot 6

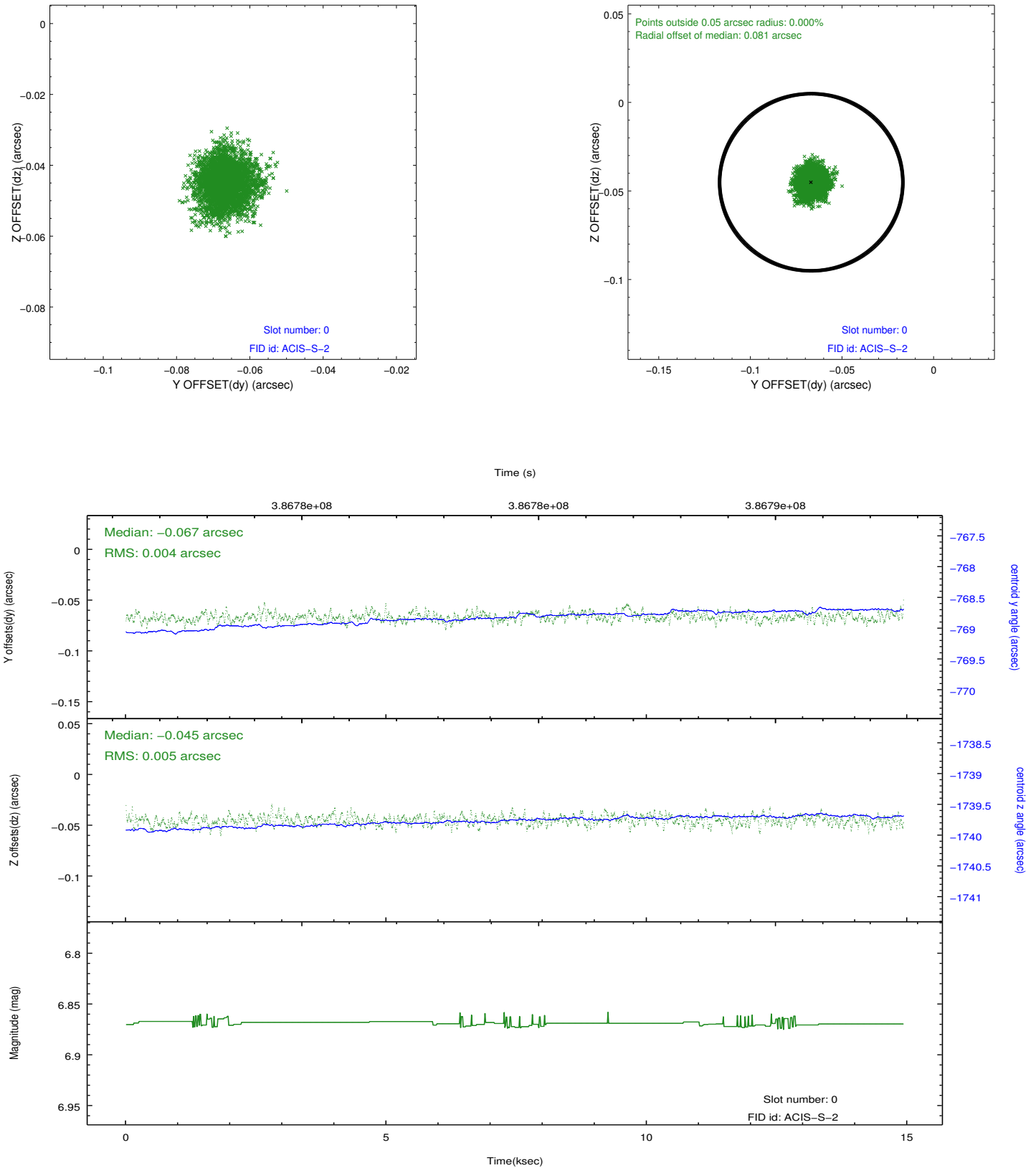


2.4.5 Slot 7

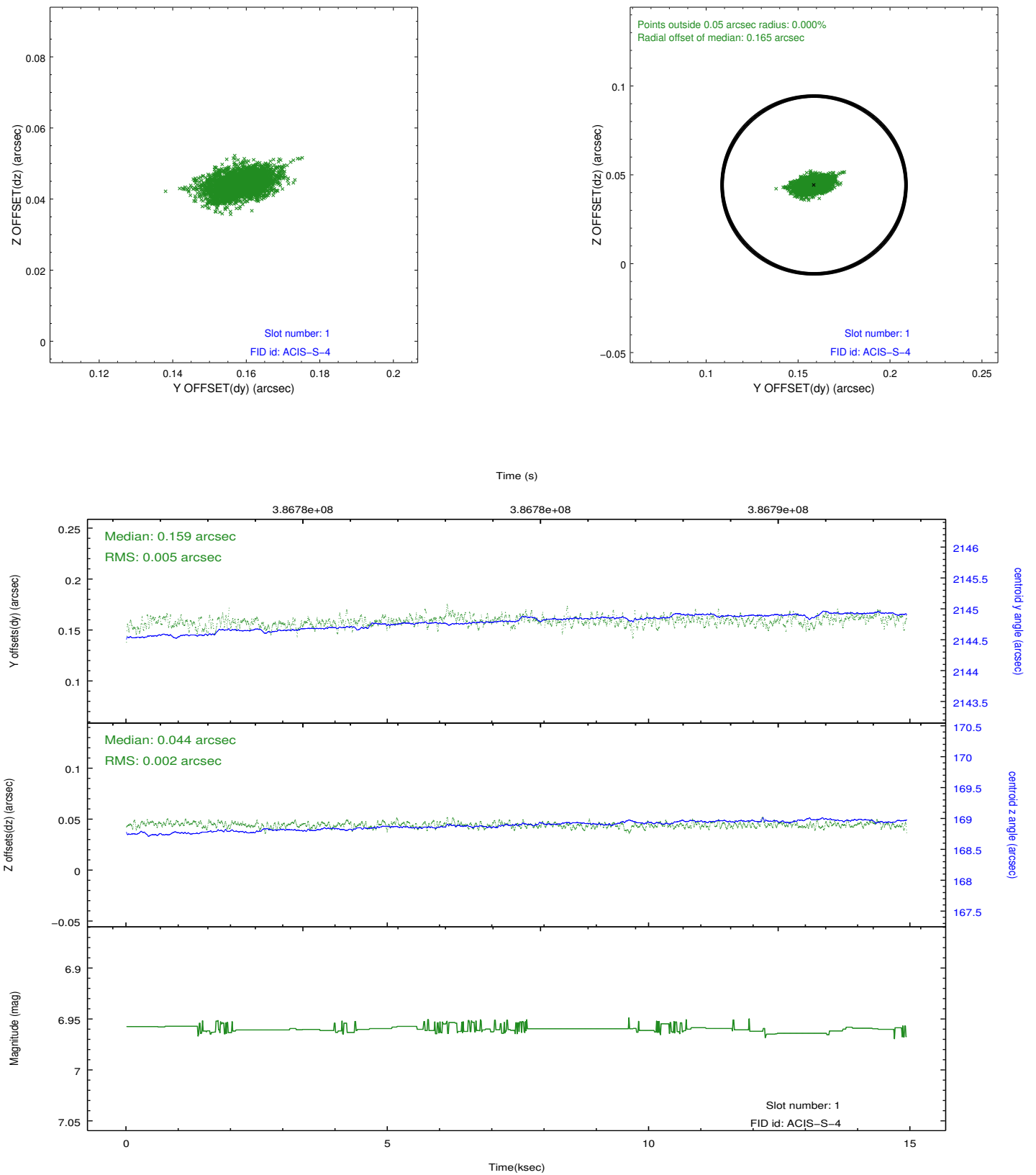


2.5 FID Slots

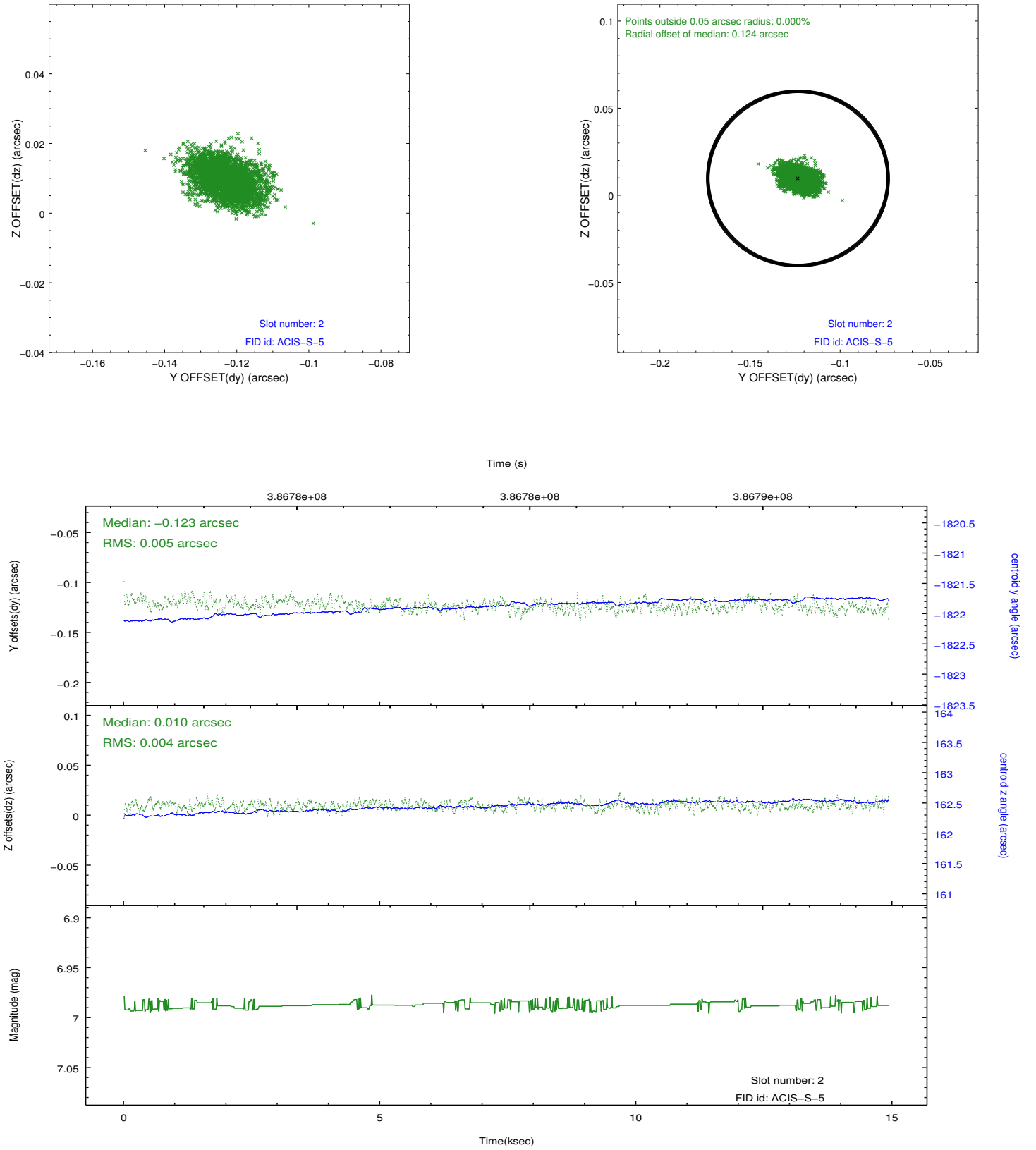
2.5.1 Slot 0



2.5.2 Slot 1



2.5.3 Slot 2



A Summary

A.1 Status

V&V Scientist	Jen Lauer
V&V Date (YYYY-MM-DD)	2012.06.29
V&V Edition	1
V&V Disposition and Status	OK
V&V Charge Time	14.921599944472

A.2 Comments

This monitoring program is designed to provide one epoch every 7 weeks on average, for one year.