

V&V Reference Report

L2 ASCDS Version : 8.4.5

Observation 11081 - L2 Version 2
Chandra X-Ray Center

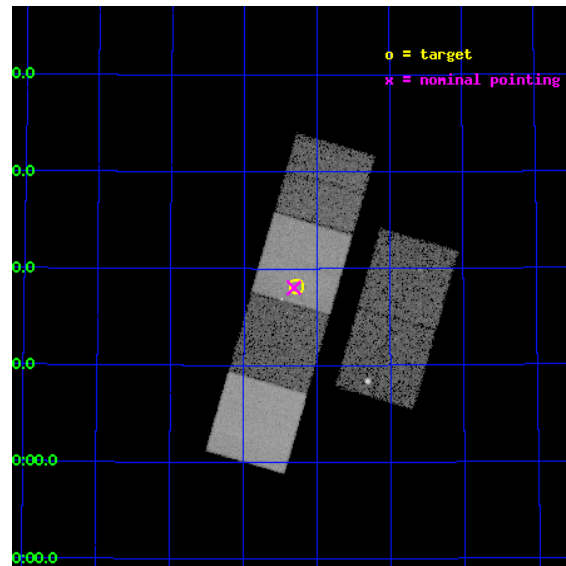
L2 Processing Date : Jun 18 2012

Contents

1	Front	2
2	OBI	3
2.1	OBI	3
2.1.1	Images	3
2.1.2	Bias	3
2.1.3	Parameters	4
2.1.4	Events	4
2.2	Compared Parameters	5
2.3	Aspect	6
2.4	Star Slots	9
2.4.1	Slot 3	9
2.4.2	Slot 4	10
2.4.3	Slot 5	11
2.4.4	Slot 6	12
2.4.5	Slot 7	13
2.5	FID Slots	14
2.5.1	Slot 0	14
2.5.2	Slot 1	15
2.5.3	Slot 2	16
A	Summary	17
A.1	Status	17
A.2	Comments	17

1 Front

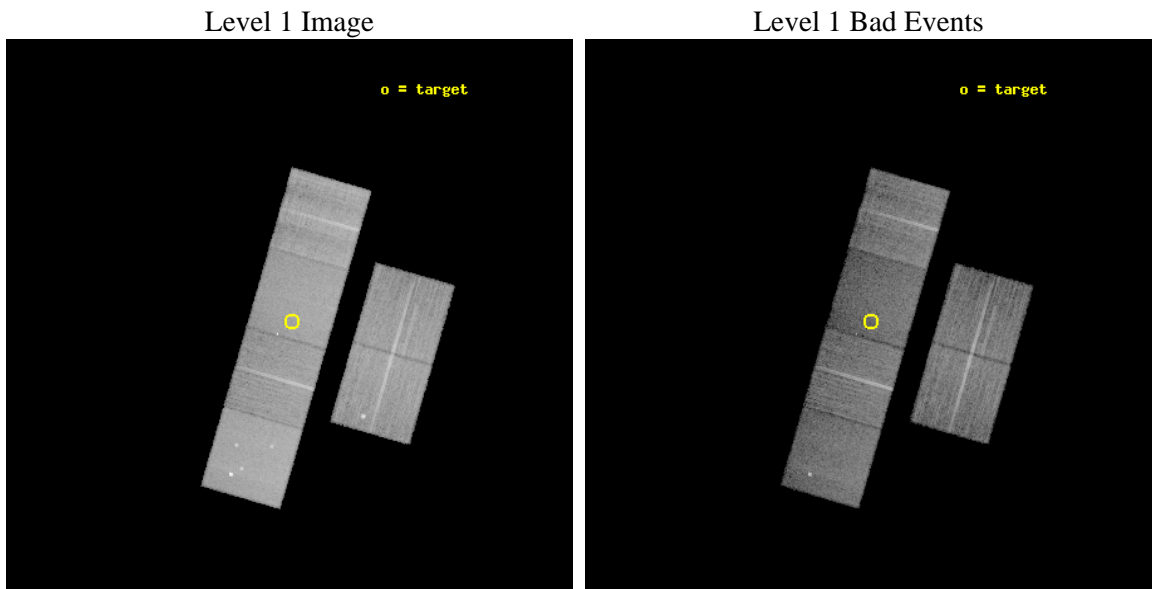
seq_num	401116	Sequence number
obs_id	11081	Observation id
title	X-Ray Binaries In a Nearby Star-Burst Galaxy: A New Lab for Astrophysics.	Proposal title
observer	Dr Silas Laycock	Principal investigator
object	IC 10	Source name
dtcycle	0	
cycle	P	events from which exps? Prim/Second/Both
ra_targ	5.072083	Observer's specified target RA [deg]
dec_targ	59.303778	Observer's specified target Dec [deg]
ra_nom	5.0791701942554	Nominal RA [deg]
dec_nom	59.300550411235	Nominal Dec [deg]
roll_nom	286.15056898624	Nominal Roll [deg]
revision	2	Processing version of data
ontime	13868.799948394	Sum of GTIs [s]
livetime	13693.184852659	Livetime [s]
ontime2	13868.799948394	Sum of GTIs [s]
ontime3	13865.55894804	Sum of GTIs [s]
ontime5	13868.799948394	Sum of GTIs [s]
ontime6	13868.799948394	Sum of GTIs [s]
ontime7	13868.799948394	Sum of GTIs [s]
ontime8	13868.799948394	Sum of GTIs [s]
l2events	192320	Number of level 2 events



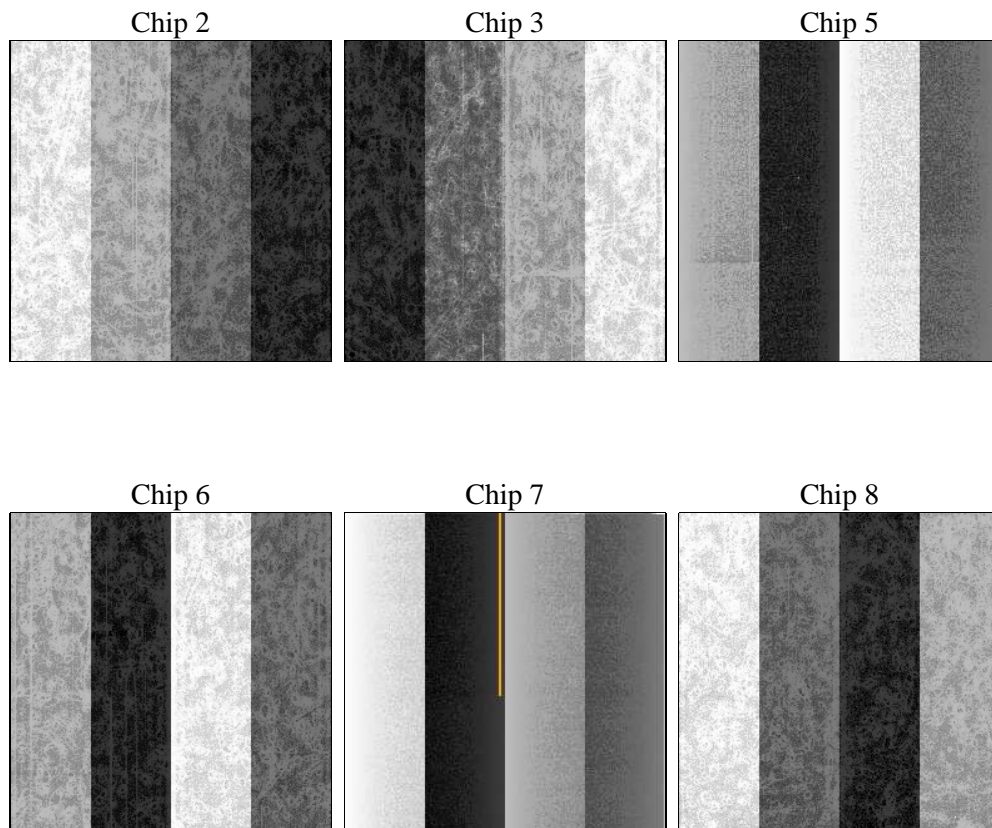
2 OBI

2.1 OBI

2.1.1 Images



2.1.2 Bias



2.1.3 Parameters

obi_num	0	Obi number	sched_exp_time	13695.769000	[s] Scheduled observation exposure time
ascdsver	8.4.5	Processing system revision	ontime	13868.799948394	Sum of GTIs [s]
caldsver	4.4.10	 	ontime2	13868.799948394	Sum of GTIs [s]
date	2012-06-18T19:05:39	Date and time of file creation	ontime3	13865.55894804	Sum of GTIs [s]
revision	2	Processing version of data	ontime5	13868.799948394	Sum of GTIs [s]
			ontime6	13868.799948394	Sum of GTIs [s]
			ontime7	13868.799948394	Sum of GTIs [s]
			ontime8	13868.799948394	Sum of GTIs [s]
			l1events	867298	Number of level 1 events

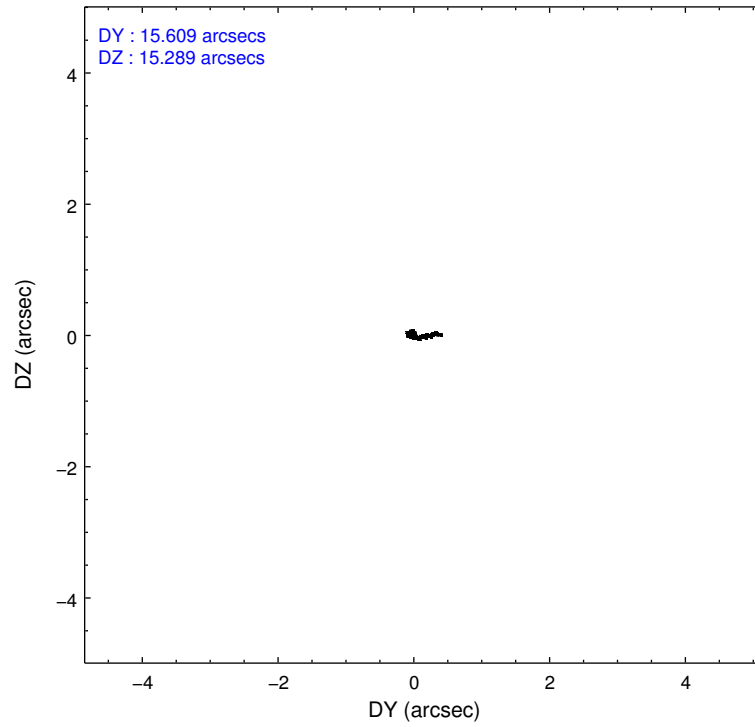
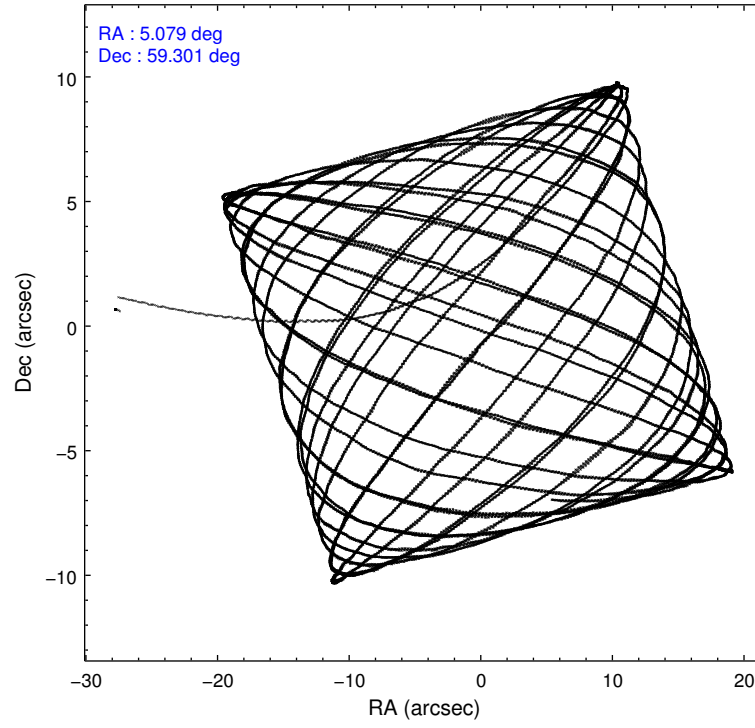
2.1.4 Events

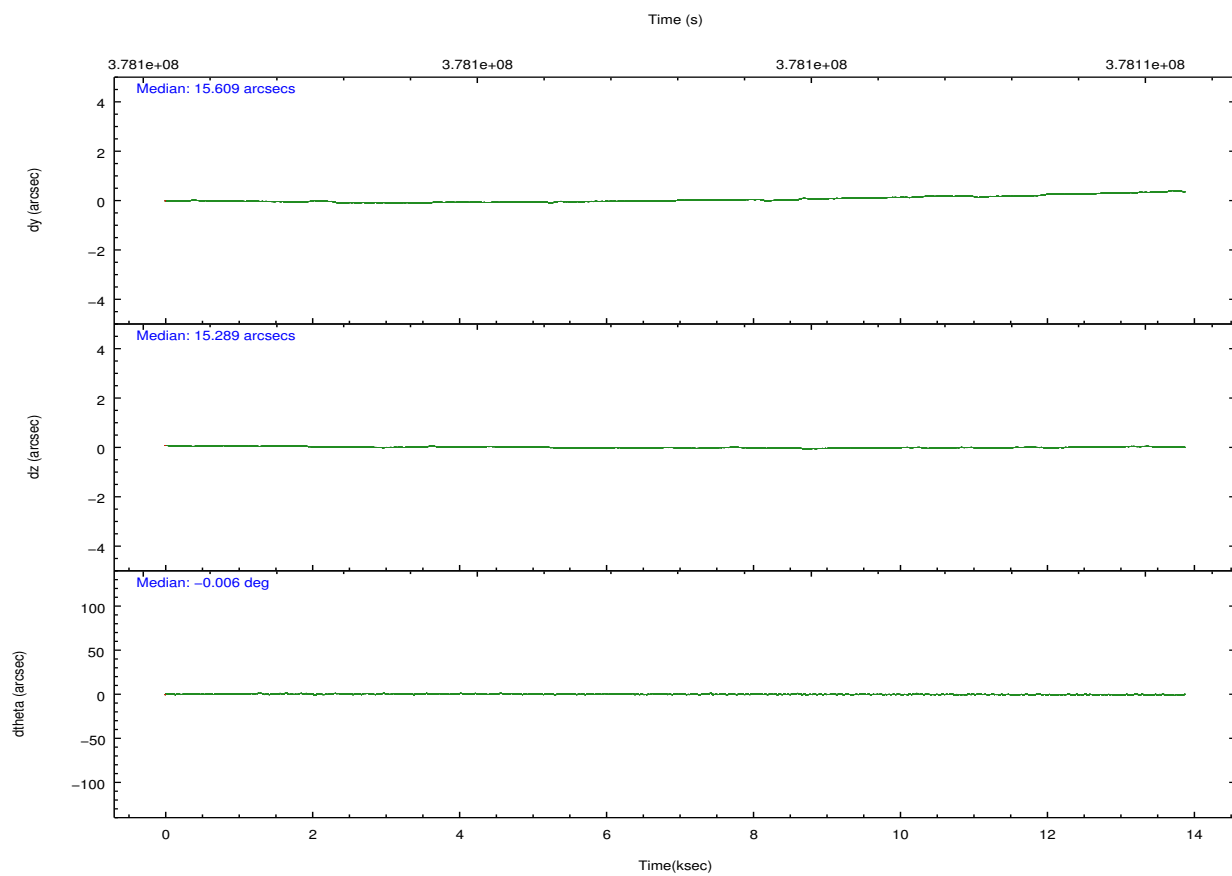
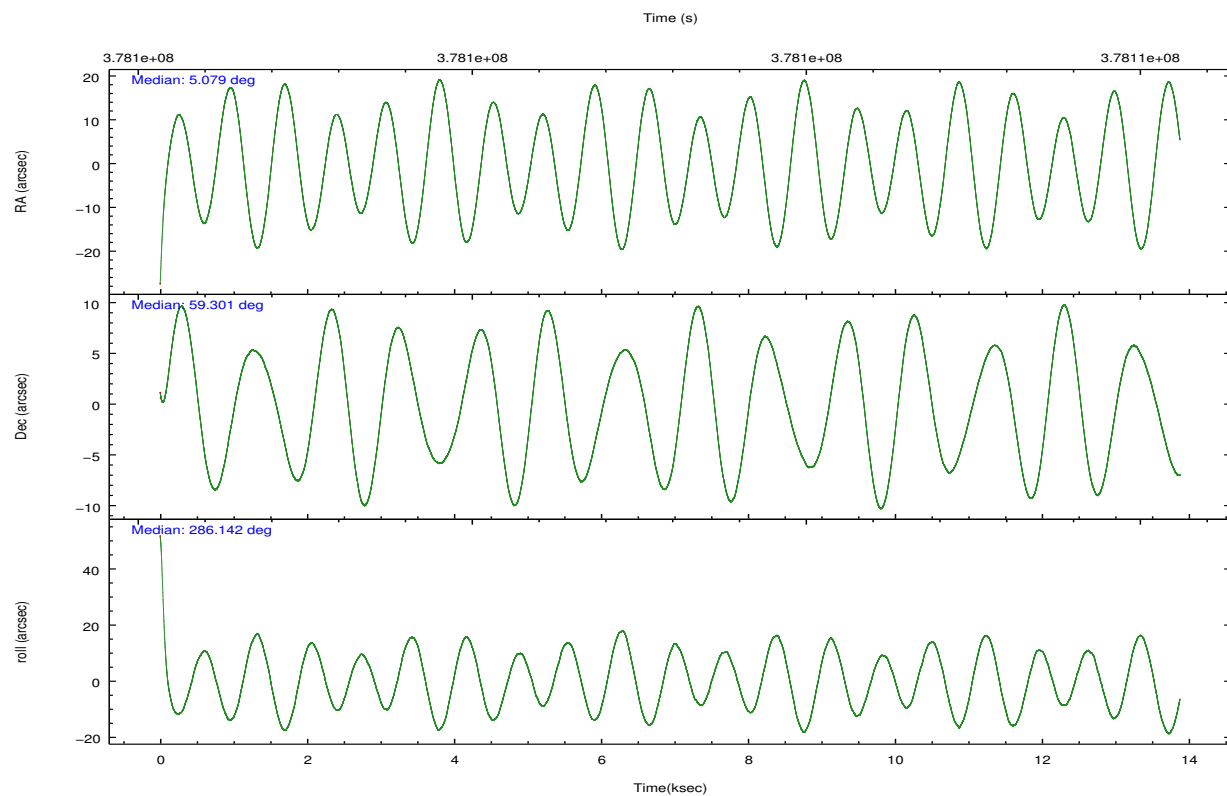
	ccd 2	ccd 3	ccd 5	ccd 6	ccd 7	ccd 8		ccd 2	ccd 3	ccd 5	ccd 6	ccd 7	ccd 8
level 1 events	134172	119322	182488	125151	146339	159826	grade 0 events	6373	4279	9005	4960	6365	11973
rejected events	119591	107694	94591	111975	81253	120020		4%	3%	4%	3%	4%	7%
rejected %	89%	90%	51%	89%	55%	75%	grade 1 events	85	73	879	65	206	143
								0%	0%	0%	0%	0%	0%
							grade 2 events	3356	2597	27905	3010	13844	9799
								2%	2%	15%	2%	9%	6%
							grade 3 events	1423	1360	3424	1453	6159	4211
								1%	1%	1%	1%	4%	2%
							grade 4 events	1393	1357	3299	1344	5893	3968
								1%	1%	1%	1%	4%	2%
							grade 5 events	4504	5302	13925	5121	15084	7705
								3%	4%	7%	4%	10%	4%
							grade 6 events	2469	2404	47198	2838	34943	11145
								1%	2%	25%	2%	23%	6%
							grade 7 events	114569	101950	76853	106360	63845	110882
								85%	85%	42%	84%	43%	69%

2.2 Compared Parameters

Parameter	Planned	Actual	Parameter	Planned	Actual
Instrument	ACIS	ACIS	Obspar format version number	7	7
Detector	ACIS-235678	ACIS-235678	Obspar file type	PREDICTED	ACTUAL
Grating	NONE	NONE	Obspar update status	NONE	UPDATED
Data mode	VFAINT	VFAINT	CCD I0 on	N	N
Observation mode	POINTING	POINTING	CCD I1 on	N	N
[deg] Pointing RA	5.039972	5.079170194255354	CCD I2 on	O2	Y
[deg] Pointing Dec	59.319189	59.30055041123508	CCD I3 on	O3	Y
[deg] Pointing Roll	286.027613	286.1505689862355	CCD S0 on	N	N
[mm] SIM focus pos	-0.684267	-0.6828225247311905	CCD S1 on	O1	Y
[mm] SIM defocus	0	0.001444936568705701	CCD S2 on	O5	Y
[mm] SIM translation stage pos	-190.132523	-190.1400660498719	CCD S3 on	Y	Y
[mm] SIM translation stage offset	0	0.00754346686406393	CCD S4 on	O4	Y
[s] Observation start time (MET)	378096208.184000	378094908.49406	CCD S5 on	N	N
Observation start date	2009-12-25T02:42:22	2009-12-25T02:21:48	Number of optional ACIS chips dropped	0	0
[s] Observation end time (MET)	378109903.184000	378110127.18232	On-chip summing requested	N	N
Observation end date	2009-12-25T06:30:37	2009-12-25T06:35:27	Subarray requested	NONE	NONE
Read mode	TIMED	TIMED	Alternating exposures requested	N	N
			[s] Primary exposure time	0.000000	3.2

2.3 Aspect



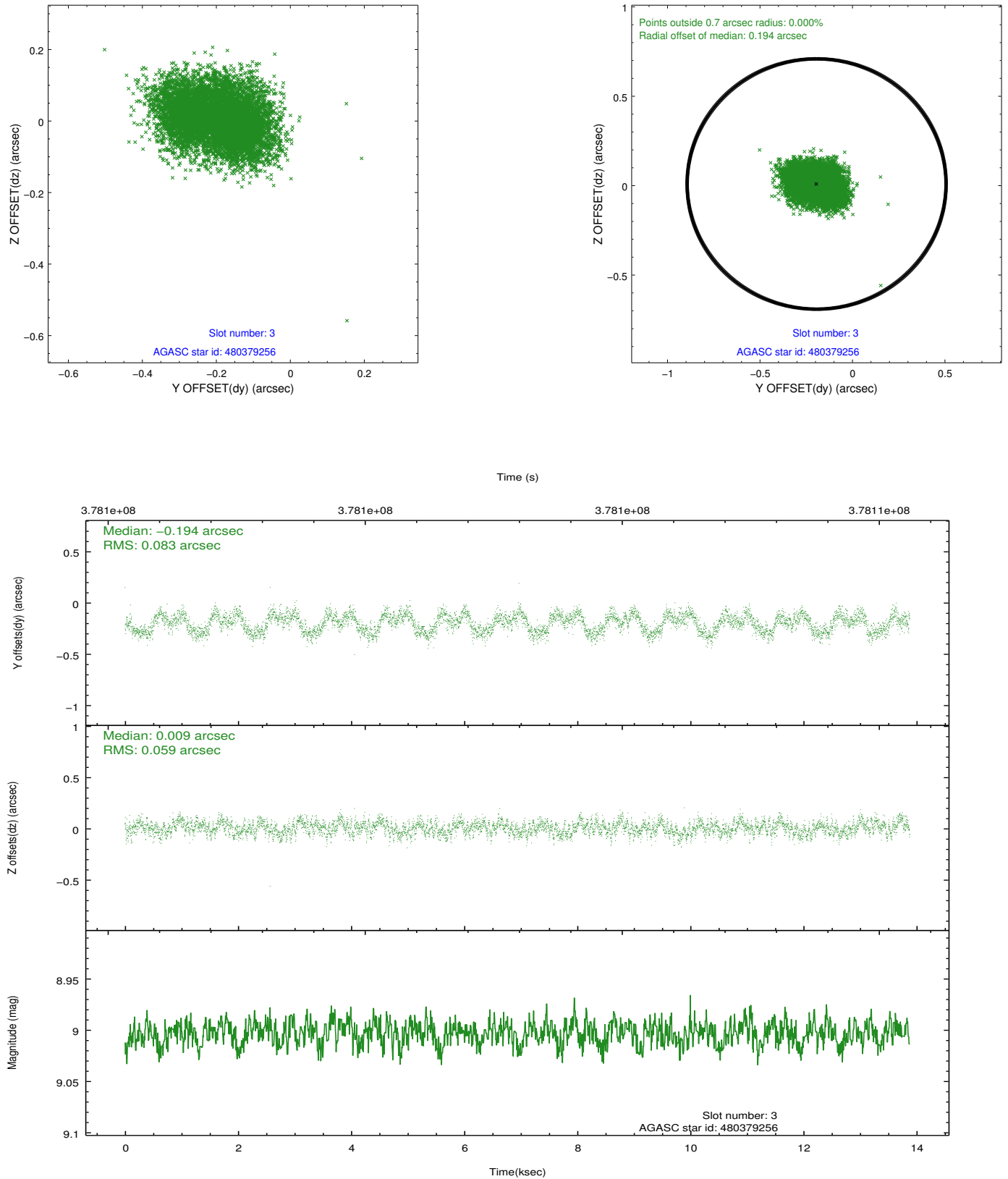


Slot Statistics

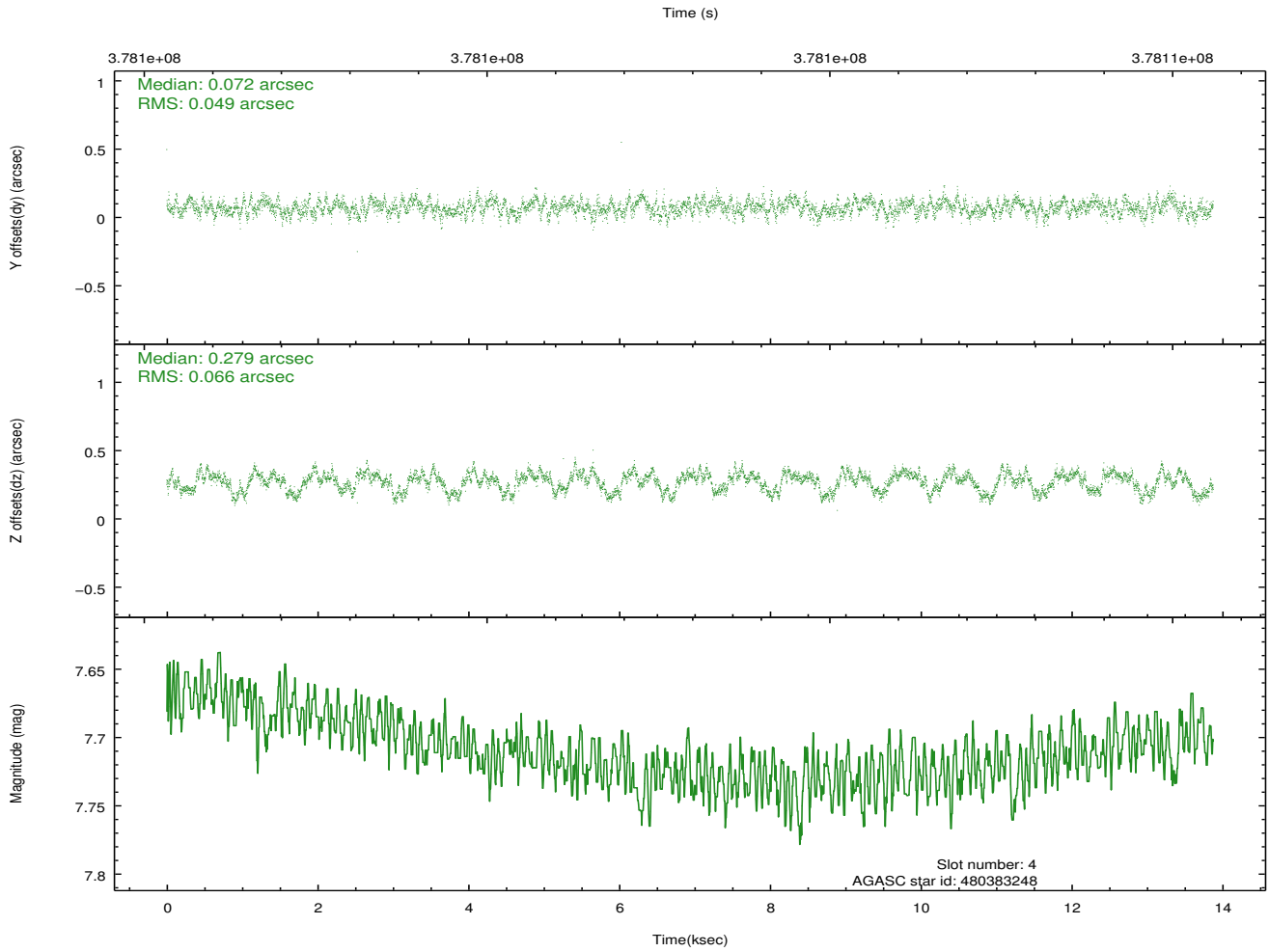
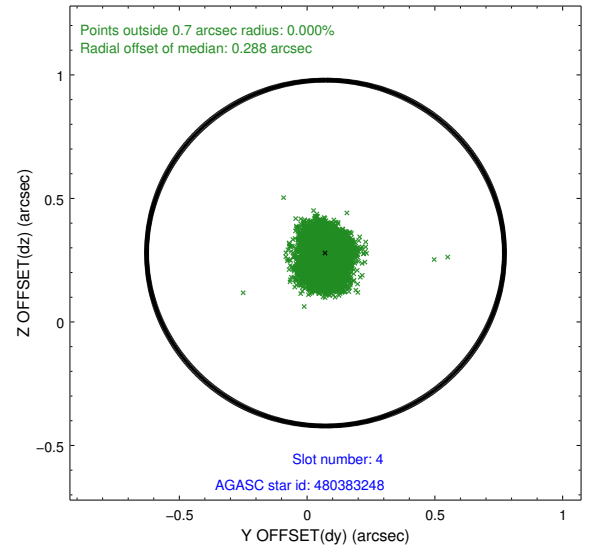
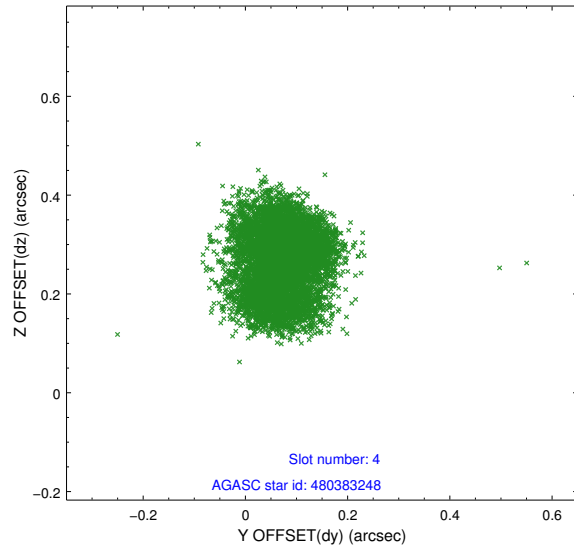
slot	status	id	mag	n_pts	med_dy	med_dz	dr1	dr2	ra	dec	mean_y	mean_z
0	FID	ACIS-S-1	6.96	3386	0.015	-0.035	0.007	0.012	0.000000	0.000000	927.42	-1732.34
1	FID	ACIS-S-4	6.98	3385	0.150	0.021	0.008	0.013	0.000000	0.000000	2145.12	171.55
2	FID	ACIS-S-5	7.01	3386	-0.192	0.026	0.007	0.013	0.000000	0.000000	-1821.25	165.47
3	GUIDE	480379256	9.00	6761	-0.194	0.009	0.110	0.169	5.631259	59.673209	-932.53	1386.30
4	GUIDE	480383248	7.71	6767	0.072	0.279	0.089	0.137	4.828098	59.139041	515.14	-554.33
5	GUIDE	480388568	8.32	6768	-0.055	-0.101	0.082	0.129	3.952528	59.440255	-983.38	-1788.44
6	GUIDE	480392088	9.14	6761	0.070	-0.125	0.102	0.164	4.376217	58.674347	1882.92	-1833.38
7	GUIDE	480393824	9.26	6765	0.107	-0.050	0.113	0.181	6.515624	59.105010	1465.64	2416.92

2.4 Star Slots

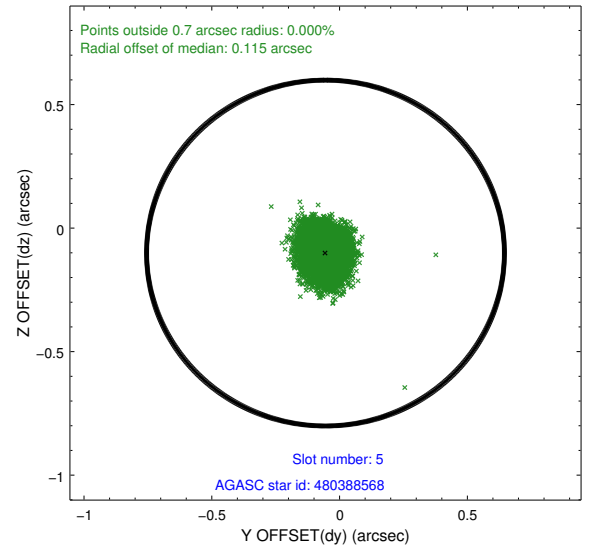
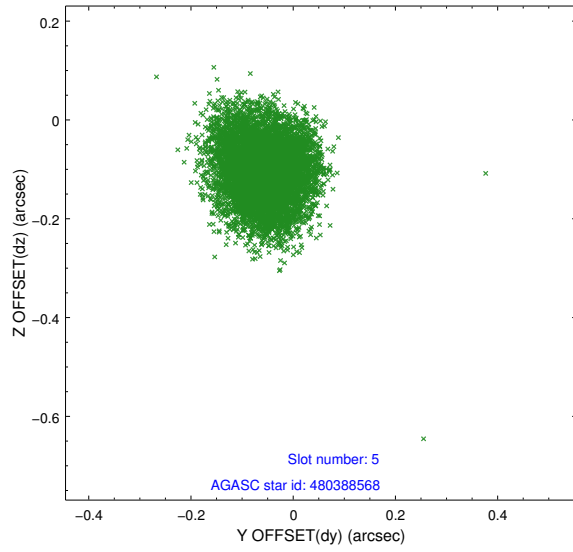
2.4.1 Slot 3



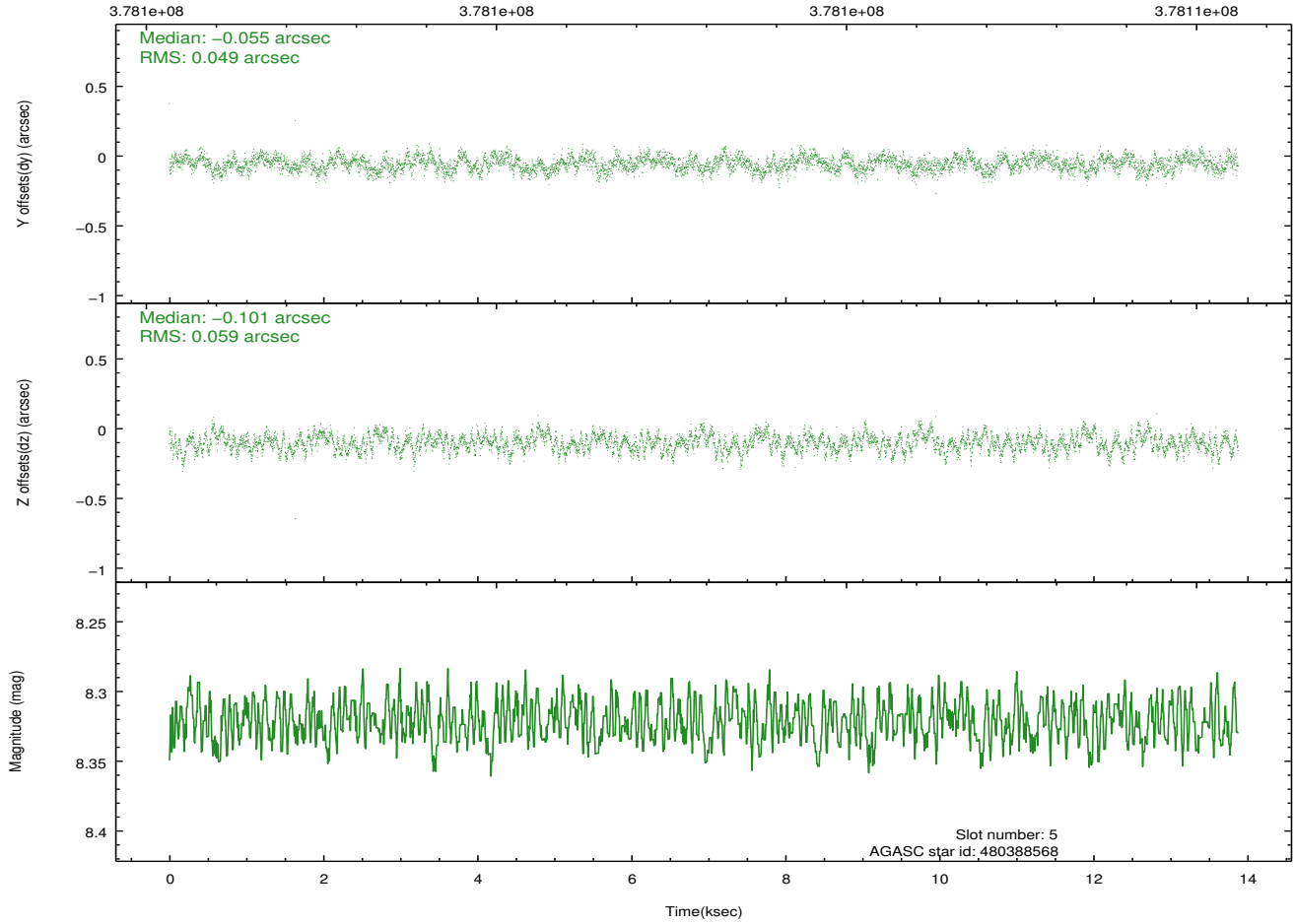
2.4.2 Slot 4



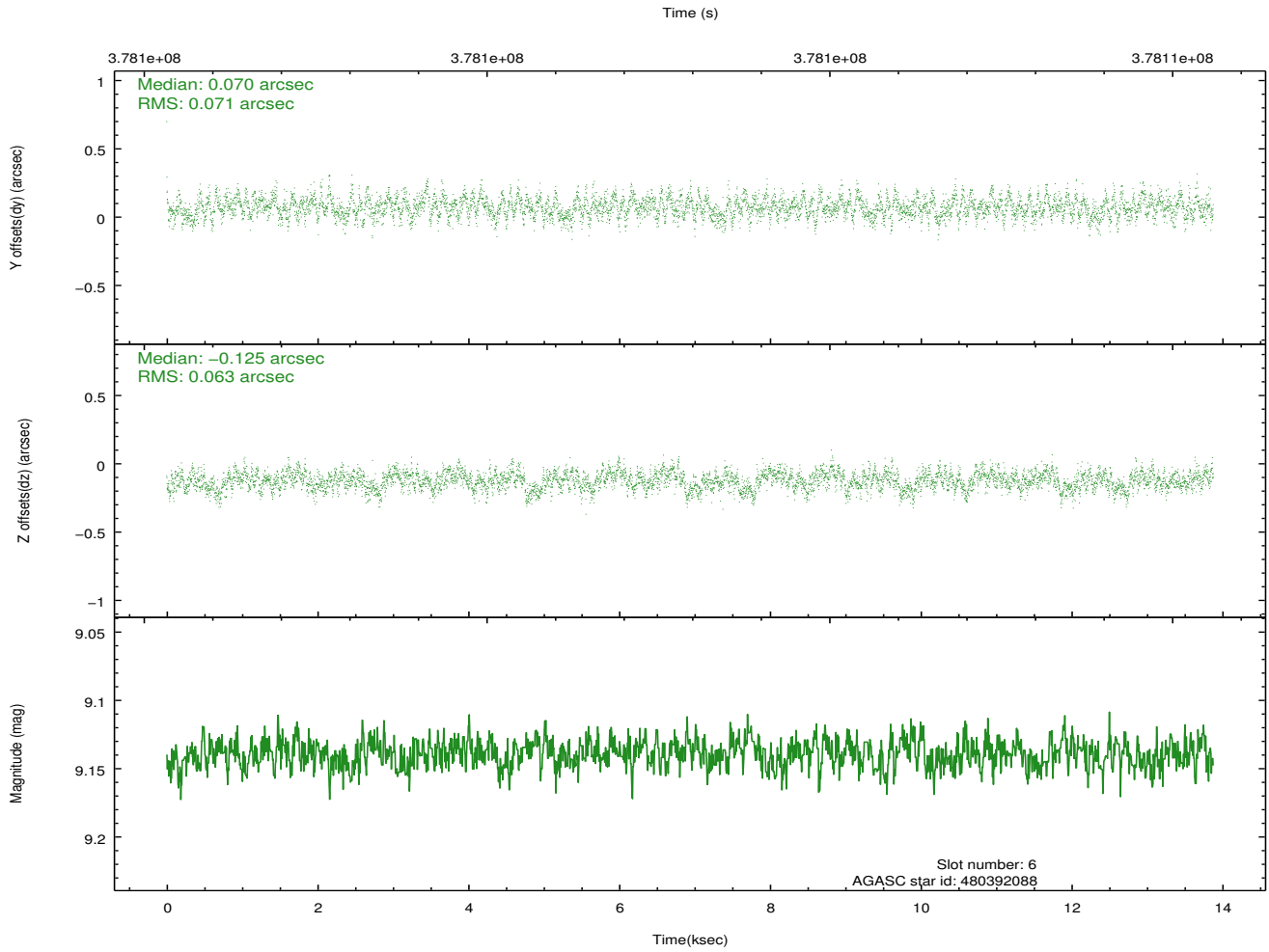
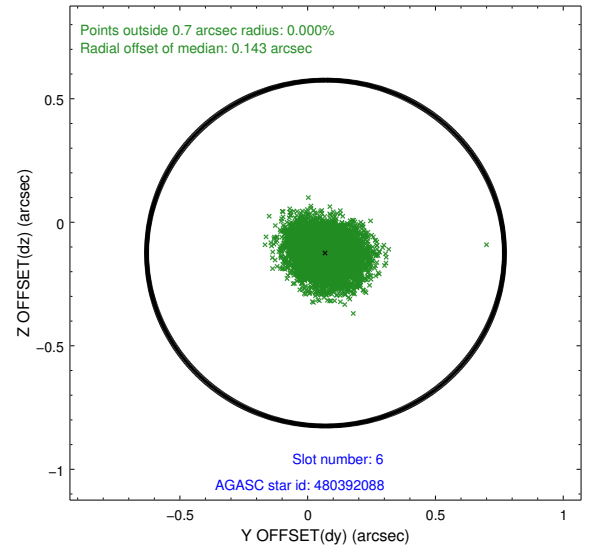
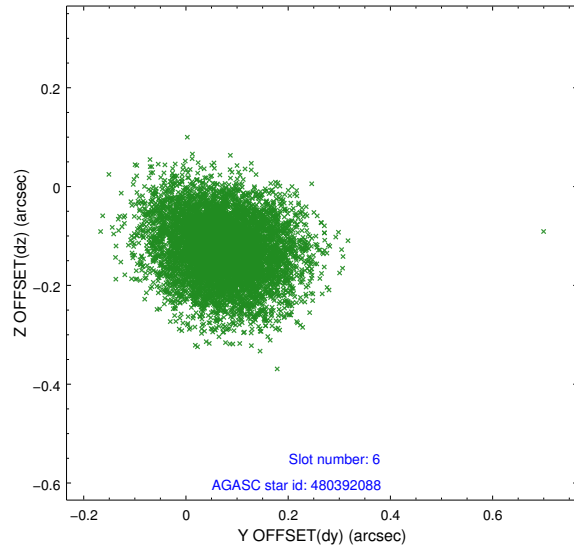
2.4.3 Slot 5



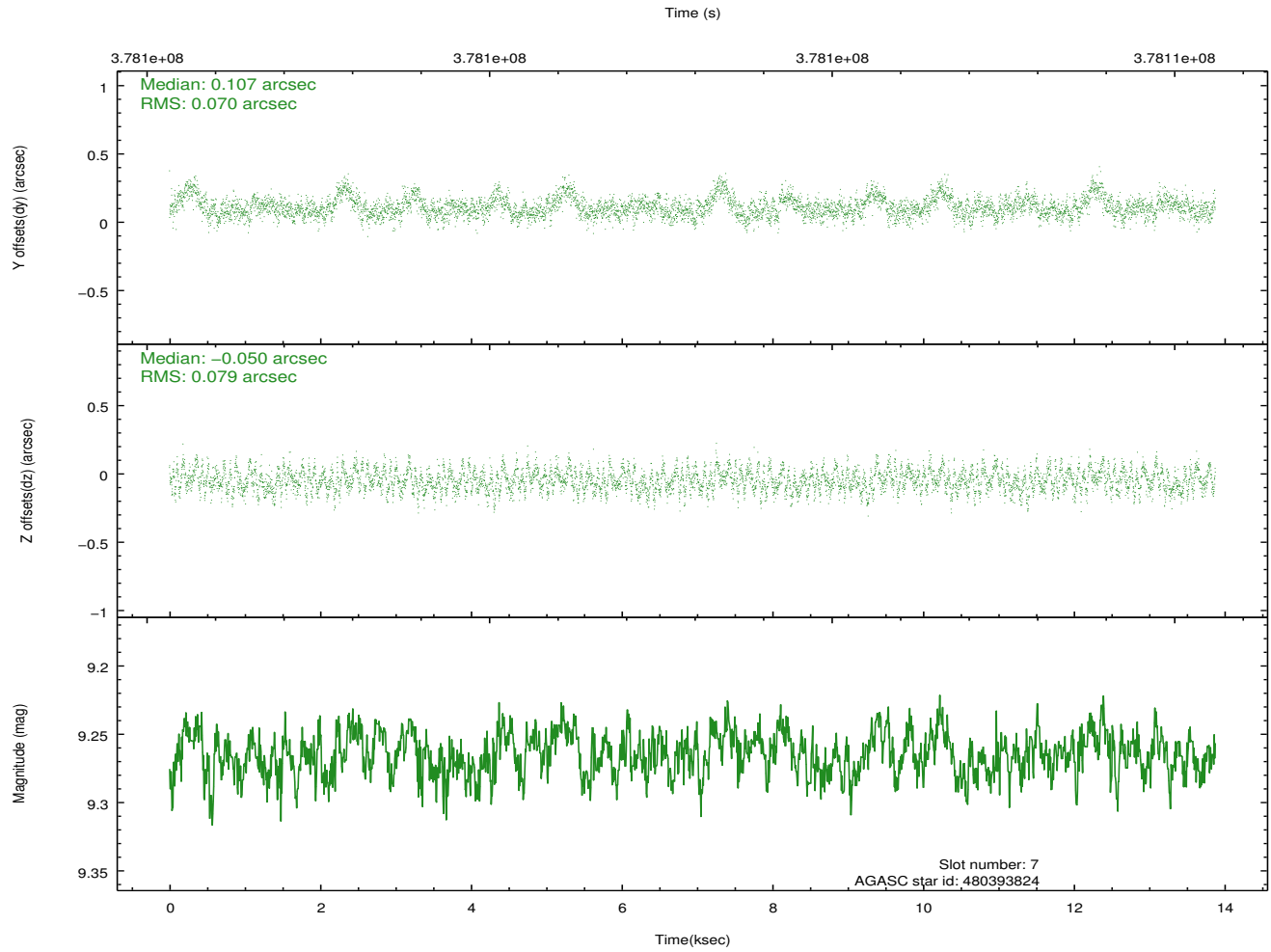
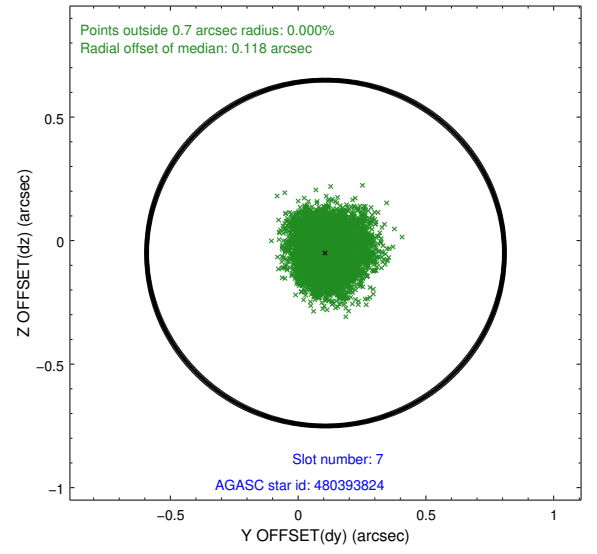
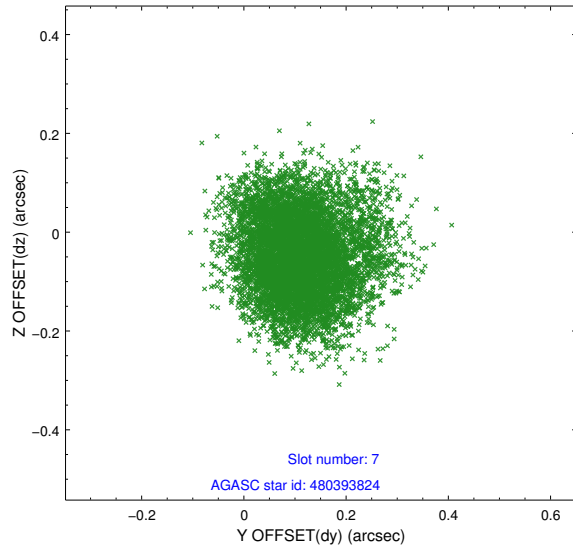
Time (s)



2.4.4 Slot 6

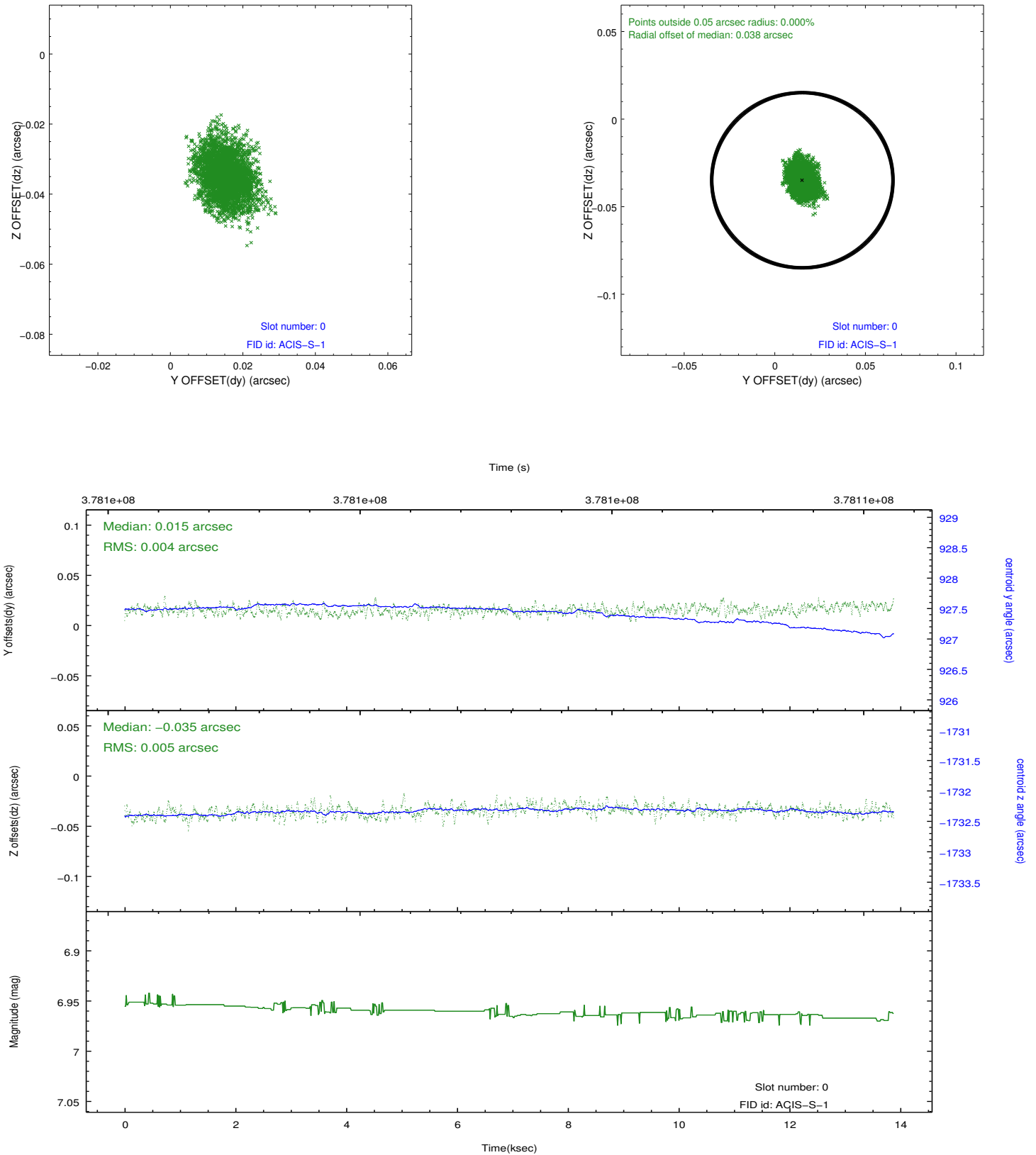


2.4.5 Slot 7

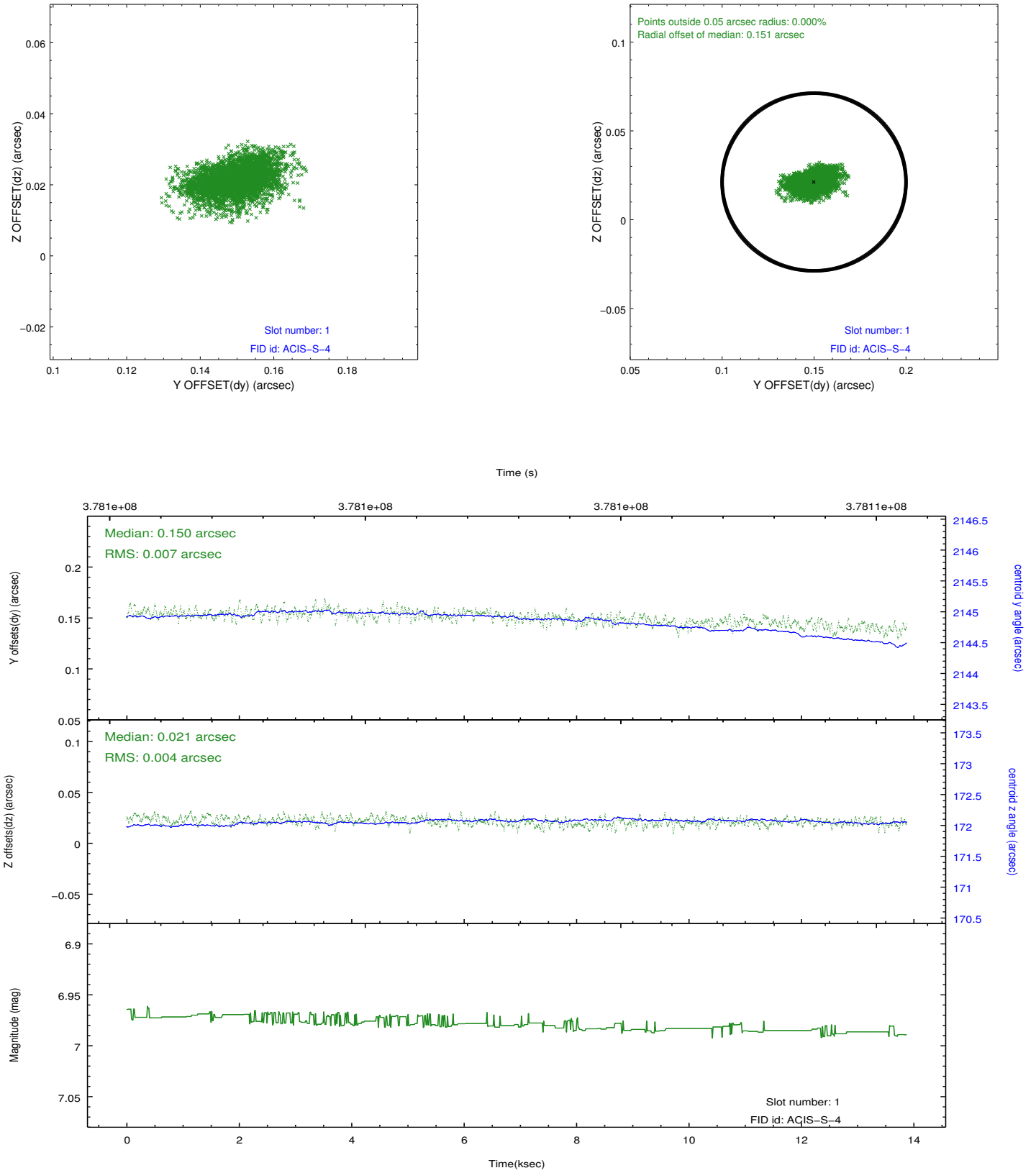


2.5 FID Slots

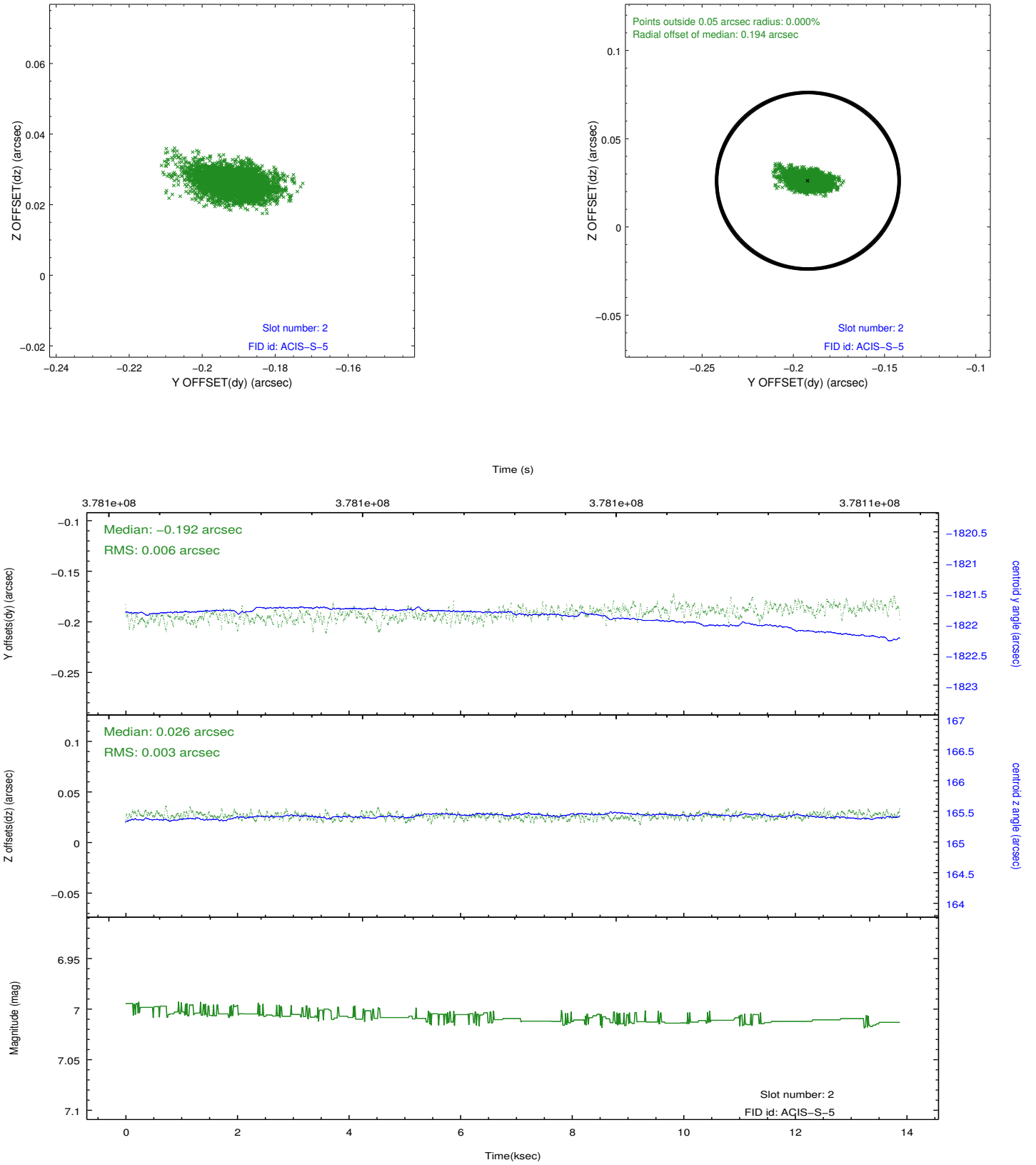
2.5.1 Slot 0



2.5.2 Slot 1



2.5.3 Slot 2



A Summary

A.1 Status

V&V Scientist	Beth Sundheim
V&V Date (YYYY-MM-DD)	2012.06.22
V&V Edition	1
V&V Disposition and Status	OK
V&V Charge Time	13.868799948394

A.2 Comments