

V&V Reference Report

L2 ASCDS Version : 8.4.5

Observation 12101 - L2 Version 2
Chandra X-Ray Center

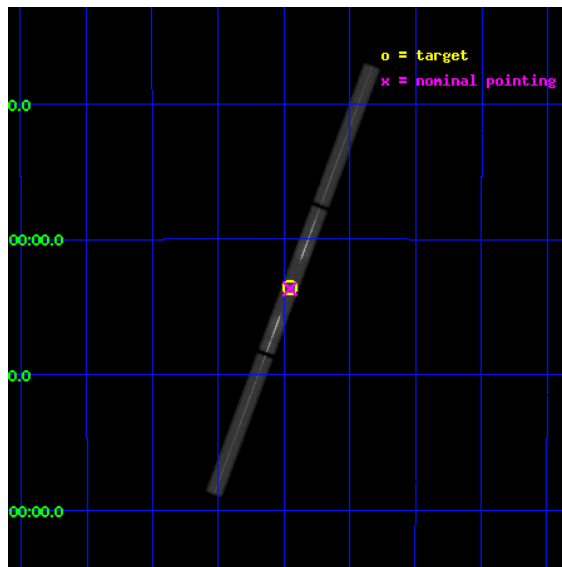
L2 Processing Date : Jun 27 2012

Contents

1	Front	2
2	OBI	3
2.1	OBI	3
2.1.1	Images	3
2.1.2	Parameters	4
2.1.3	Events	4
2.2	Compared Parameters	5
2.3	Aspect	6
2.4	Star Slots	9
2.4.1	Slot 3	9
2.4.2	Slot 4	10
2.4.3	Slot 5	11
2.4.4	Slot 6	12
2.4.5	Slot 7	13
2.5	FID Slots	14
2.5.1	Slot 0	14
2.5.2	Slot 1	15
2.5.3	Slot 2	16
3	Gratings	17
3.1	LETG Arm	17
A	Summary	19
A.1	Status	19
A.2	Comments	19

1 Front

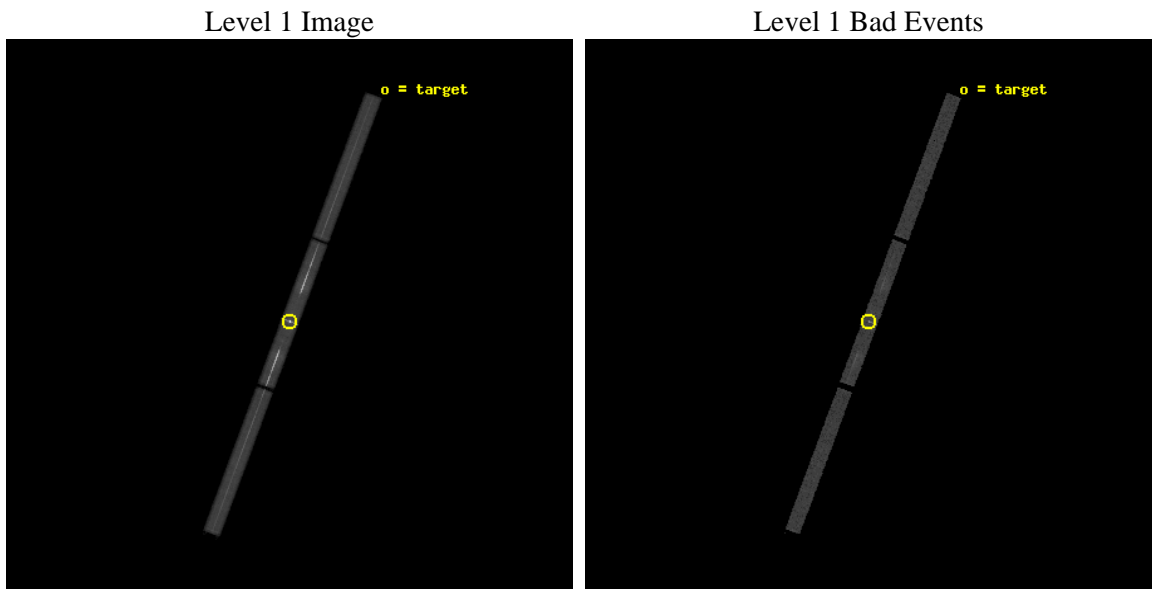
seq_num	300276	Sequence number
obs_id	12101	Observation id
title	The bright super-supersoft souce phase of KT Eri	Proposal title
observer	Dr. Jeremy Drake	Principal investigator
object	KT Eri	Source name
ra_targ	71.975833	Observer's specified target RA [deg]
dec_targ	-10.178639	Observer's specified target Dec [deg]
ra_nom	71.977571460221	Nominal RA [deg]
dec_nom	-10.183239861421	Nominal Dec [deg]
roll_nom	290.45524163105	Nominal Roll [deg]
revision	2	Processing version of data
ontime	5159.0815111995	[s]
livetime	3519.5751900597	Ontime multiplied by DTCOR
l2events	852561	Number of level 2 events



2 OBI

2.1 OBI

2.1.1 Images



2.1.2 Parameters

obi_num	0	Obi number	sched_exp_time	5000.000000	[s] Scheduled observation exposure time
ascdsver	8.4.5	Processing system revision	ontime	5159.0815111995	[s]
caldsver	4.5.0	 	l1events	1130336	Number of level 1 events
date	2012-06-27T16:03:08	Date and time of file creation			
revision	2	Processing version of data			

2.1.3 Events

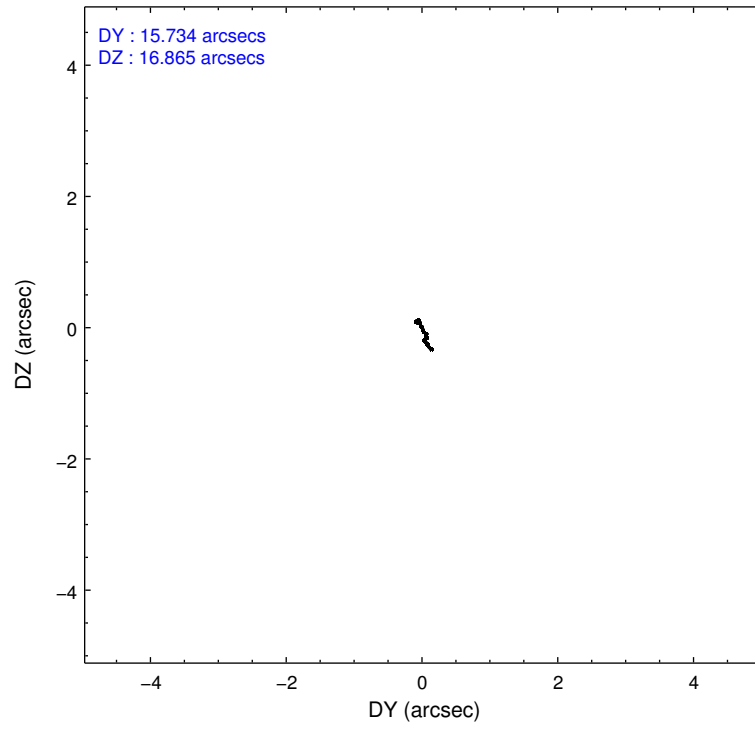
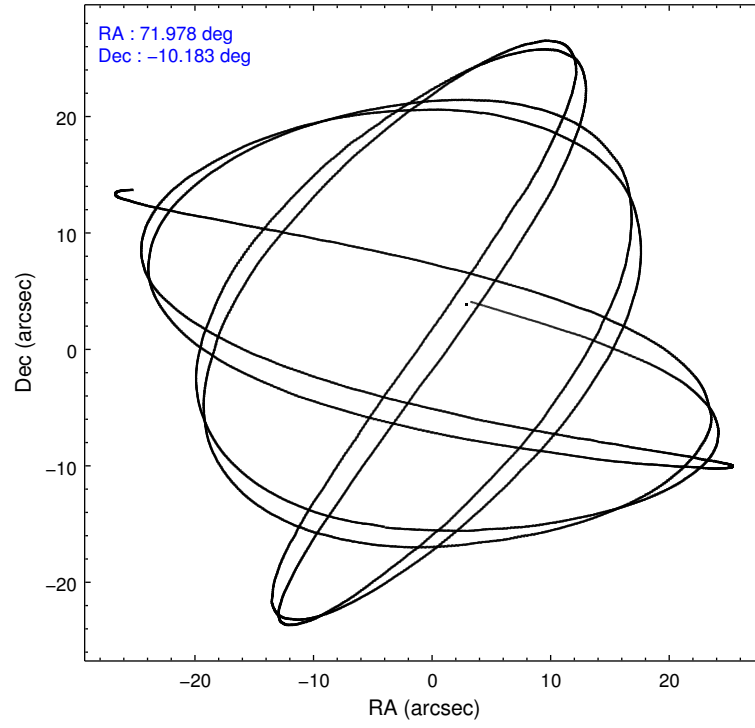
Level 1 Events

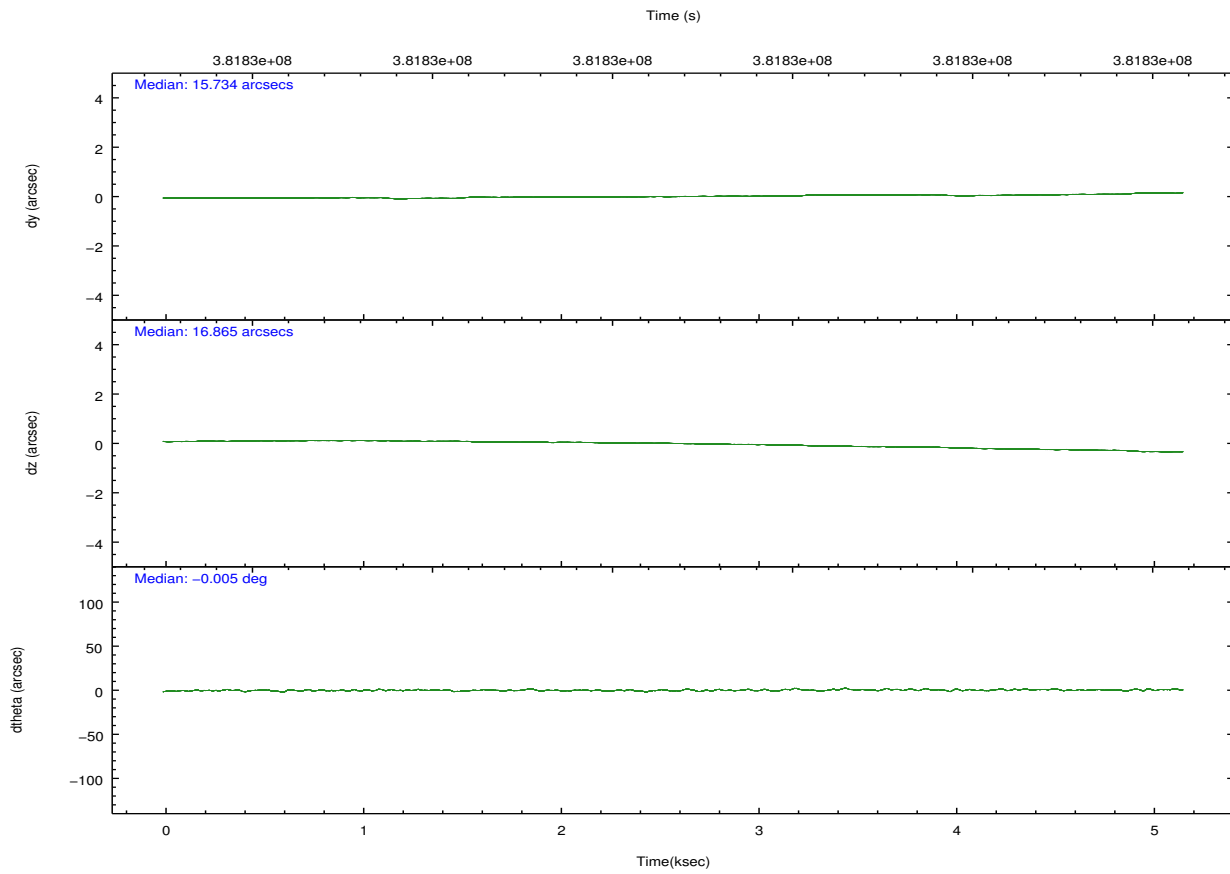
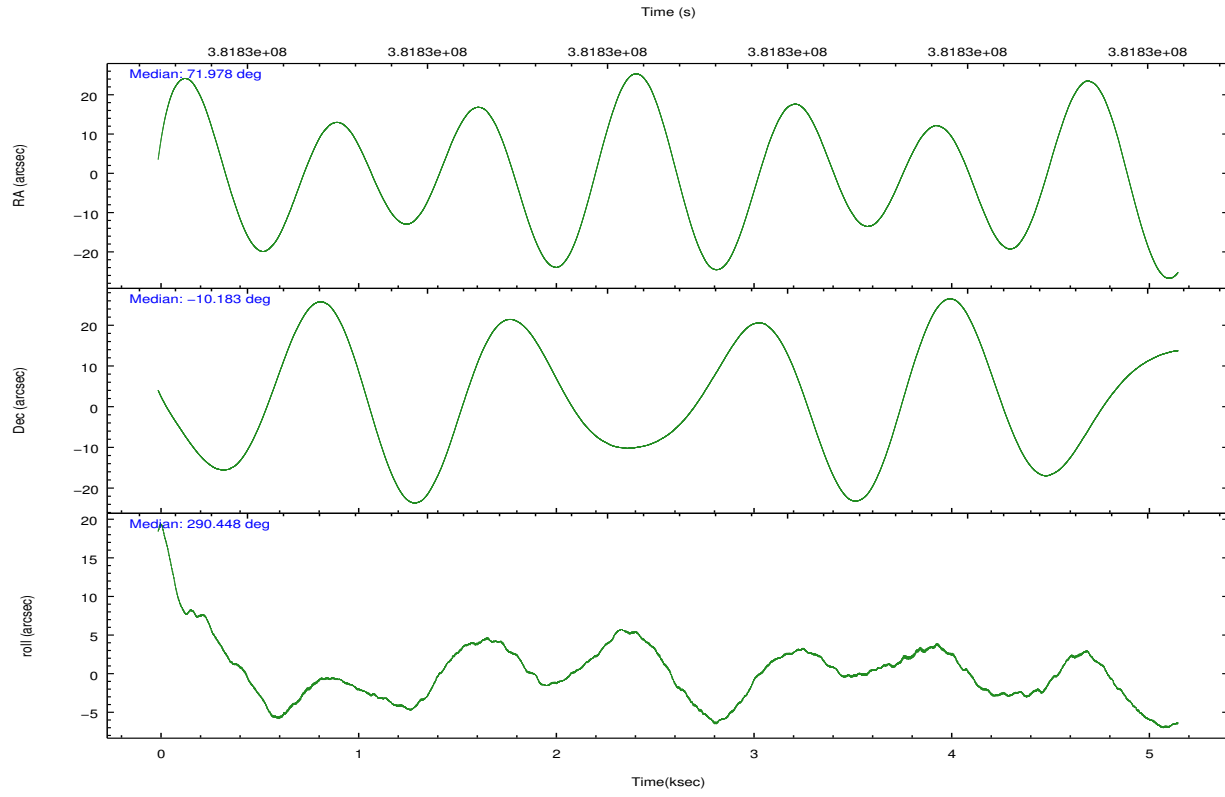
	segment 1	segment 2	segment 3
level 1 events	216288	693175	220873
rejected events	54860	68265	55751
rejected %	25%	9%	25%

2.2 Compared Parameters

Parameter	Planned	Actual	Parameter	Planned	Actual
Instrument	HRC	HRC	Obspar format version number	7	7
Detector	HRC-S	HRC-S	Obspar file type	PREDICTED	ACTUAL
Grating	LETG	LETG	Obspar update status	NONE	UPDATED
Data mode	OBSERVING	OBSERVING			
Observation mode	POINTING	POINTING			
[deg] Pointing RA	71.954066	71.97757146022066			
[deg] Pointing Dec	-10.165975	-10.18323986142097			
[deg] Pointing Roll	290.383730	290.4552416310504			
[mm] SIM focus pos	-1.429586	-1.428180813131781			
[mm] SIM defocus	0.1037507710433287	0.1051558262725154			
[mm] SIM translation stage pos	250.455976	250.4635187648994			
[mm] SIM translation stage offset	0	-0.007540371344731511			
[s] Observation start time (MET)	381825905.184000	381824986.18281			
Observation start date	2010-02-06T06:43:59	2010-02-06T06:29:46			
[s] Observation end time (MET)	381830905.184000	381831539.00814			
Observation end date	2010-02-06T08:07:19	2010-02-06T08:18:59			

2.3 Aspect



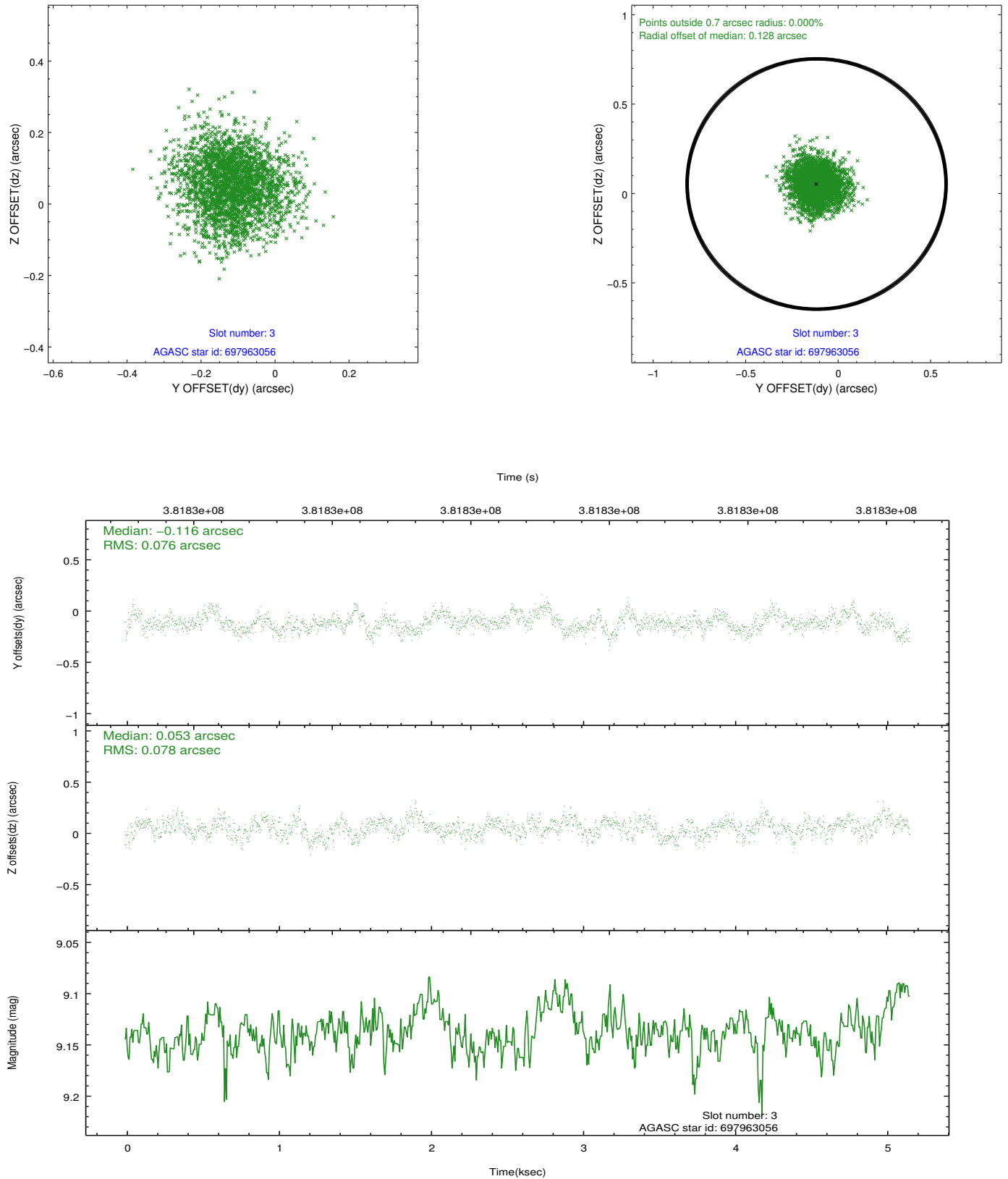


Slot Statistics

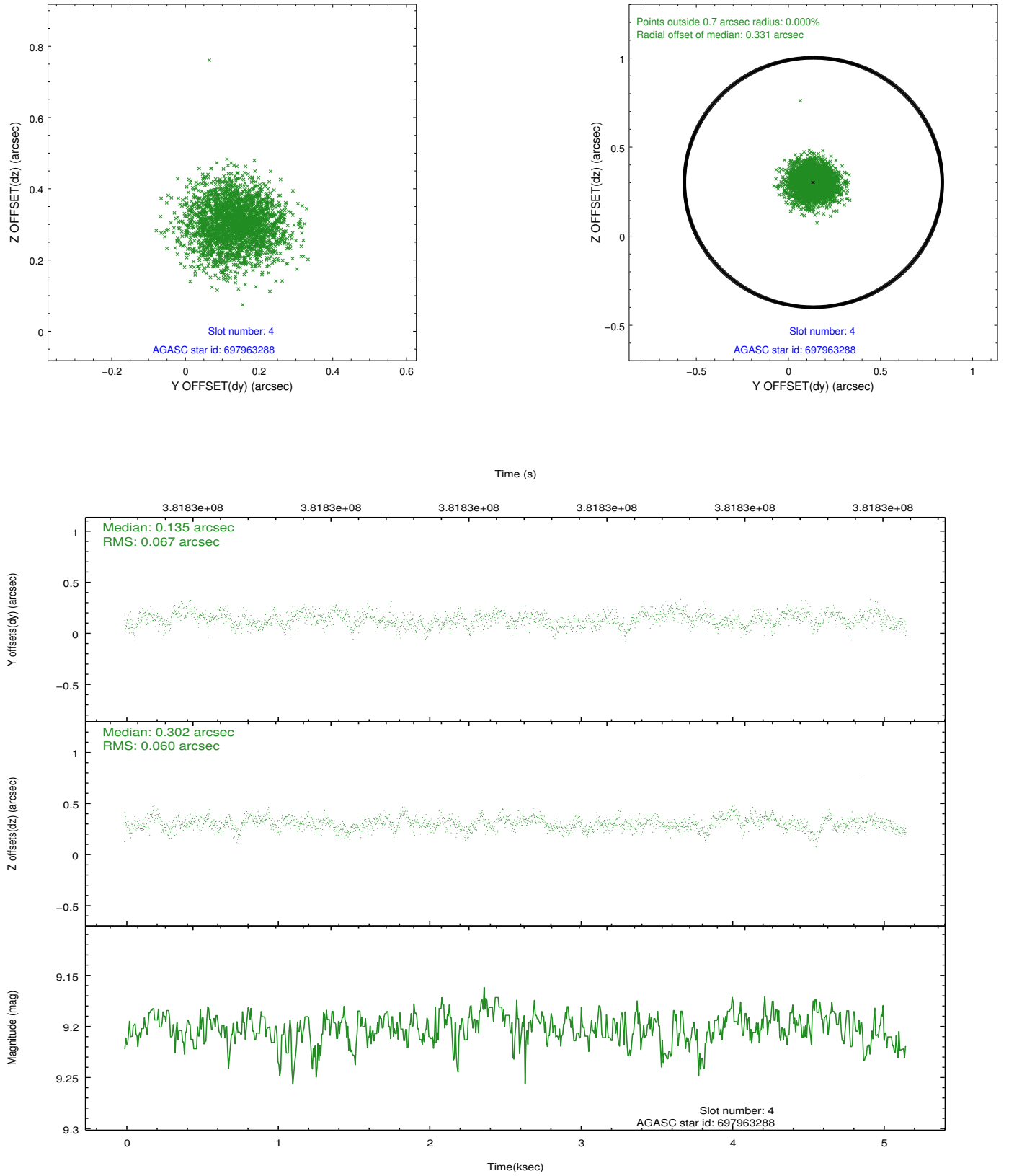
slot	status	id	mag	n_pts	med_dy	med_dz	dr1	dr2	ra	dec	mean_y	mean_z
0	FID	HRC-S-1	7.03	1259	0.036	-0.156	0.009	0.015	0.000000	0.000000	-1170.19	-465.71
1	FID	HRC-S-2	7.02	1258	0.257	-0.114	0.006	0.012	0.000000	0.000000	1228.78	-458.61
2	FID	HRC-S-3	7.04	1259	0.097	-0.032	0.010	0.018	0.000000	0.000000	-1171.90	563.59
3	GUIDE	697963056	9.14	2511	-0.116	0.053	0.116	0.186	72.545470	-10.265861	1068.12	1838.16
4	GUIDE	697963288	9.20	2515	0.135	0.302	0.096	0.154	72.359717	-10.592578	1940.80	811.49
5	GUIDE	697970576	8.30	2517	-0.118	-0.052	0.076	0.126	71.548767	-10.222268	-308.51	-1416.78
6	GUIDE	697973824	7.98	2516	0.012	0.027	0.065	0.106	72.012098	-10.590000	1502.39	-339.88
7	GUIDE	697971944	9.20	2506	0.088	-0.324	0.121	0.192	71.714219	-10.975346	2437.21	-1809.96

2.4 Star Slots

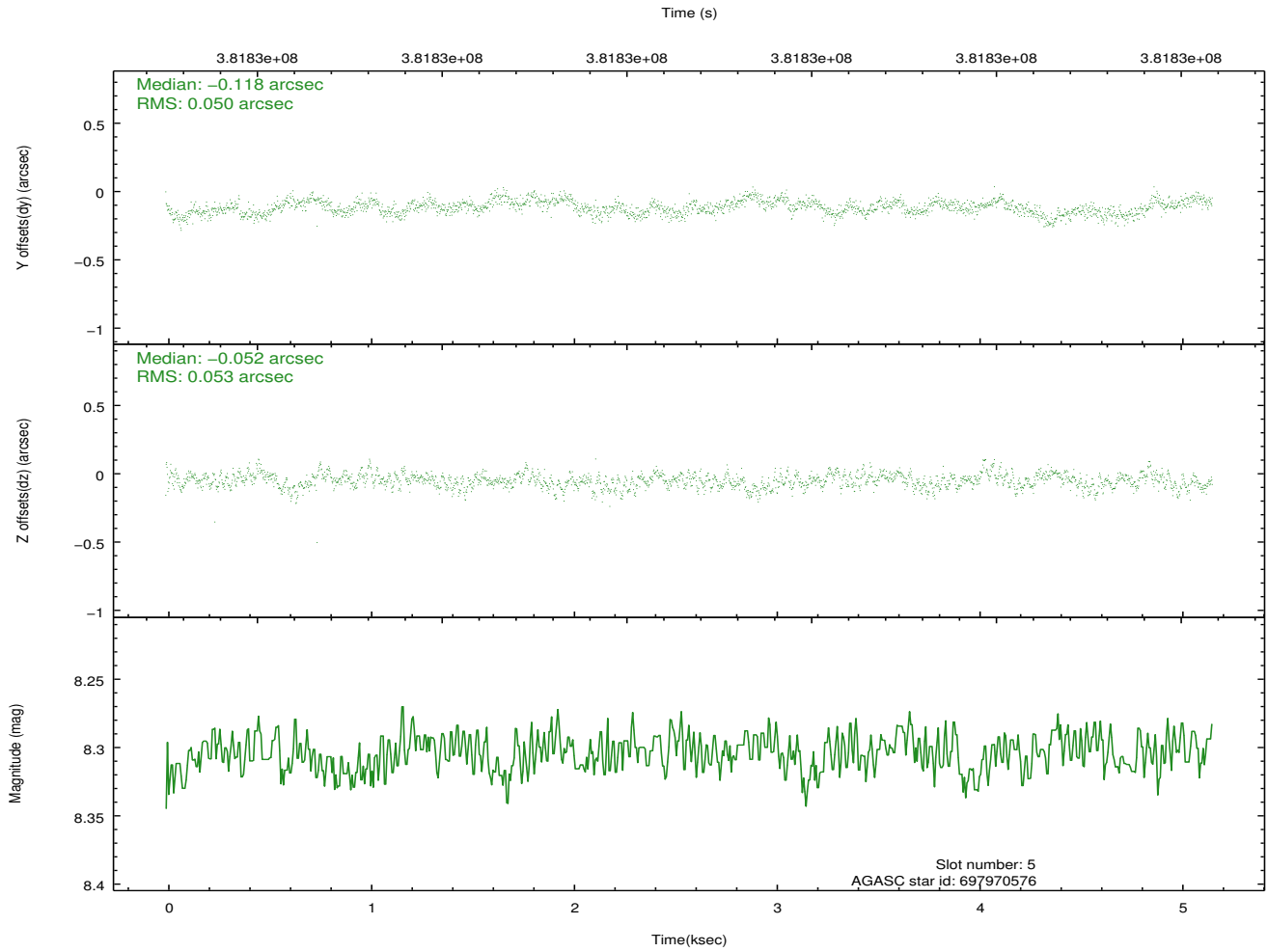
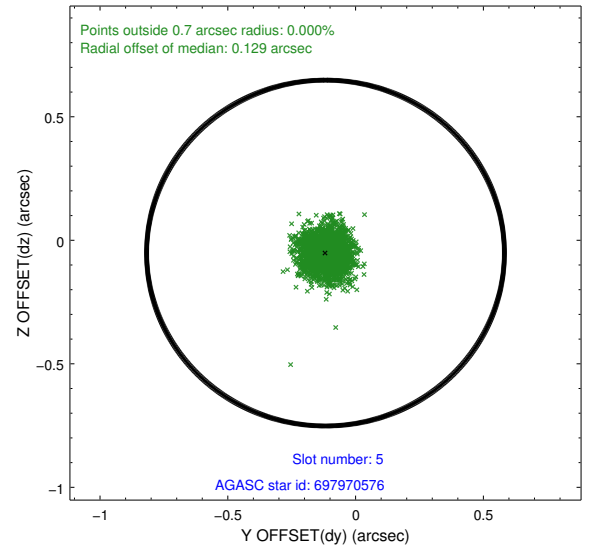
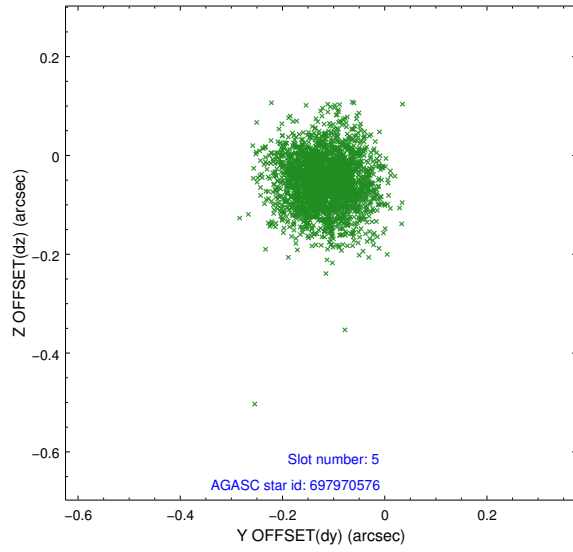
2.4.1 Slot 3



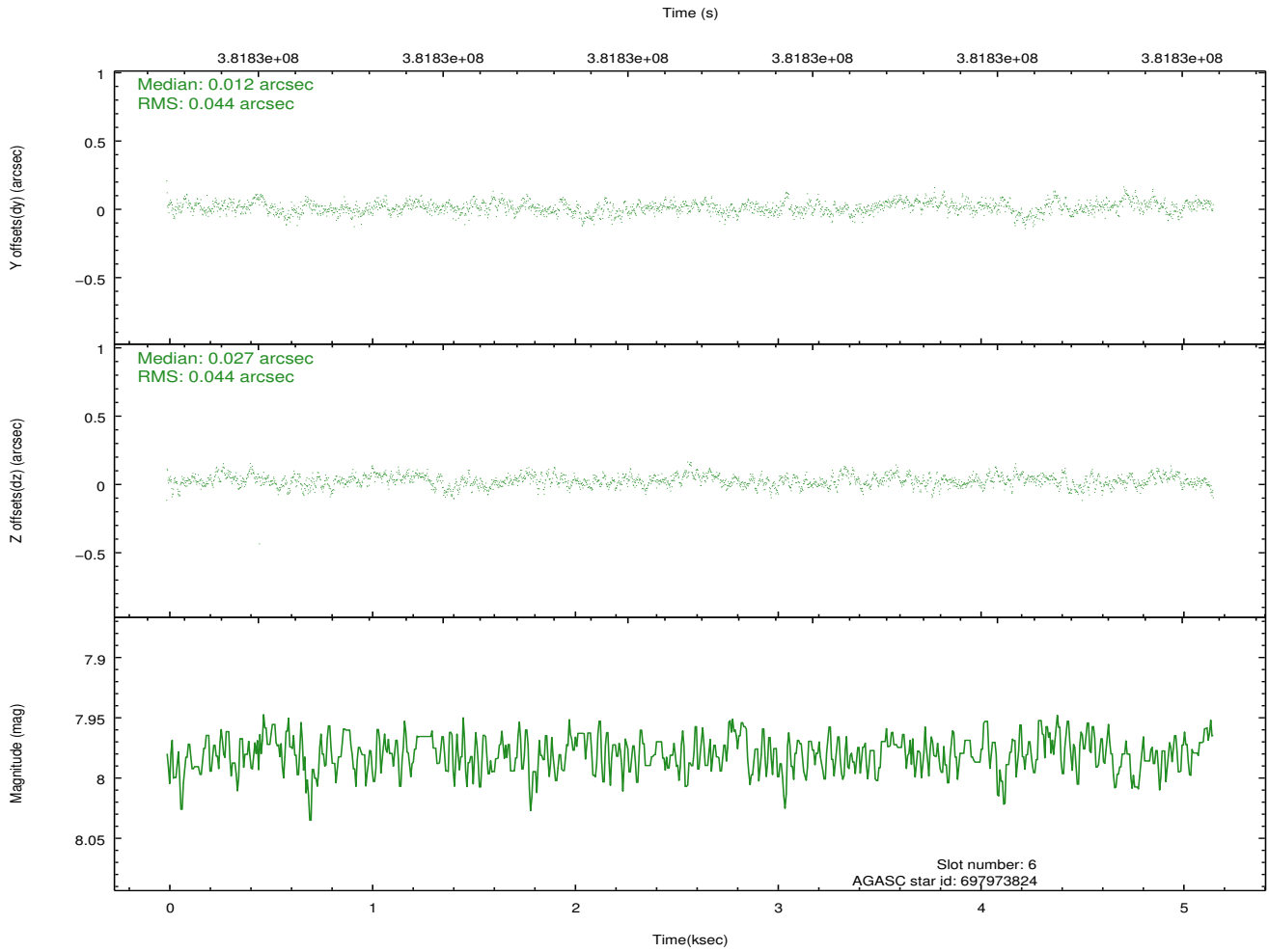
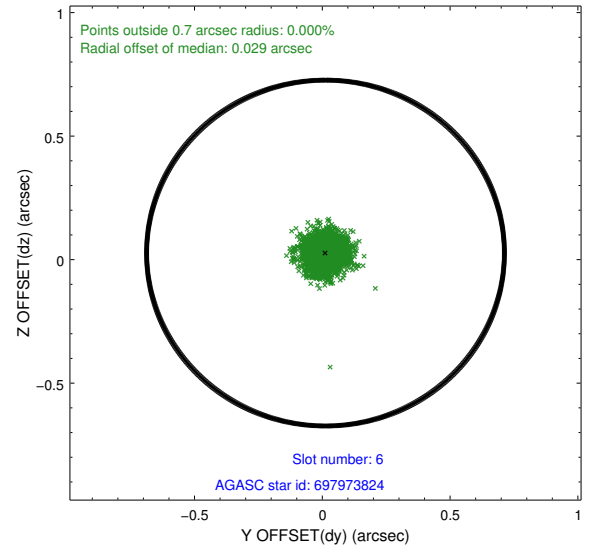
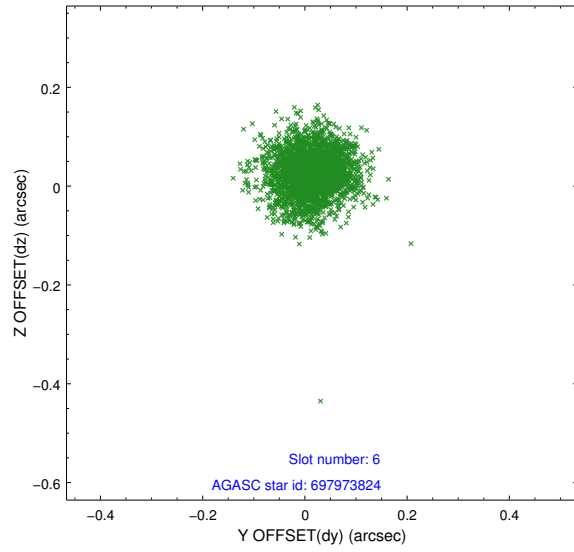
2.4.2 Slot 4



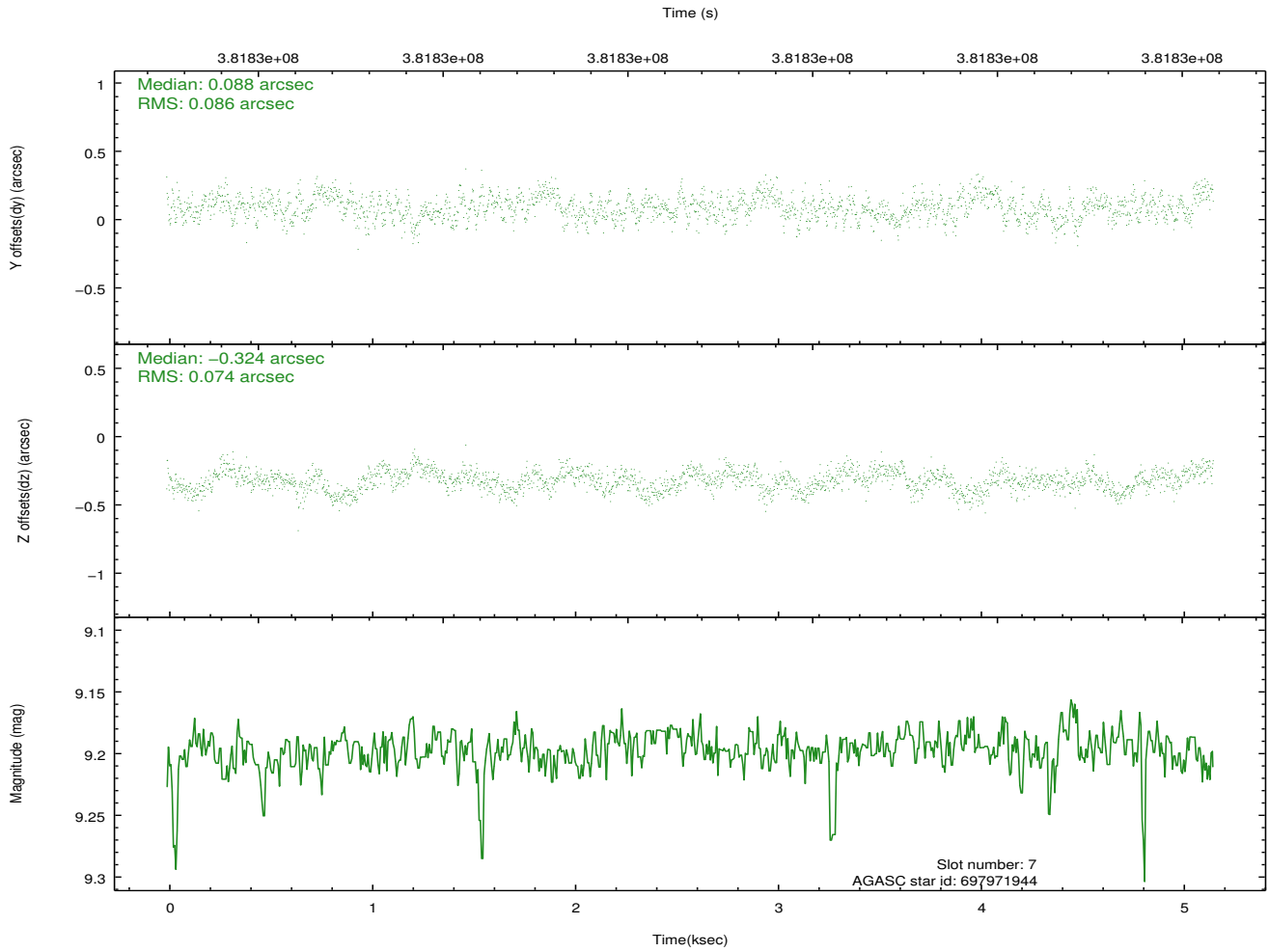
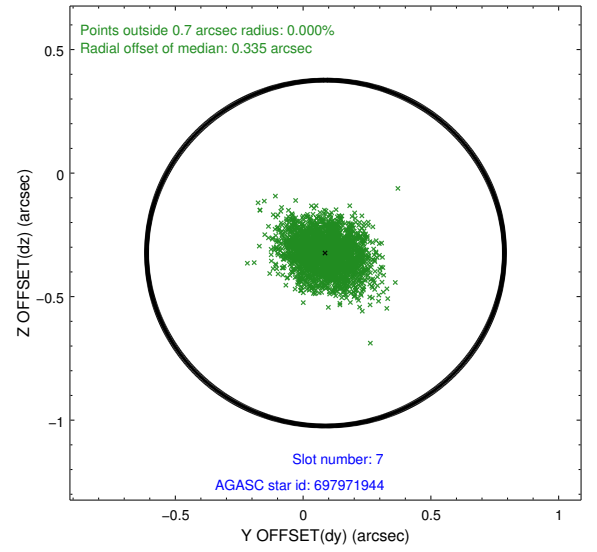
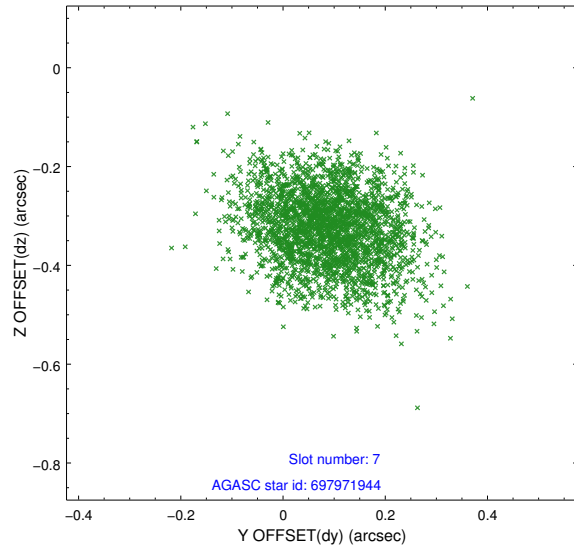
2.4.3 Slot 5



2.4.4 Slot 6

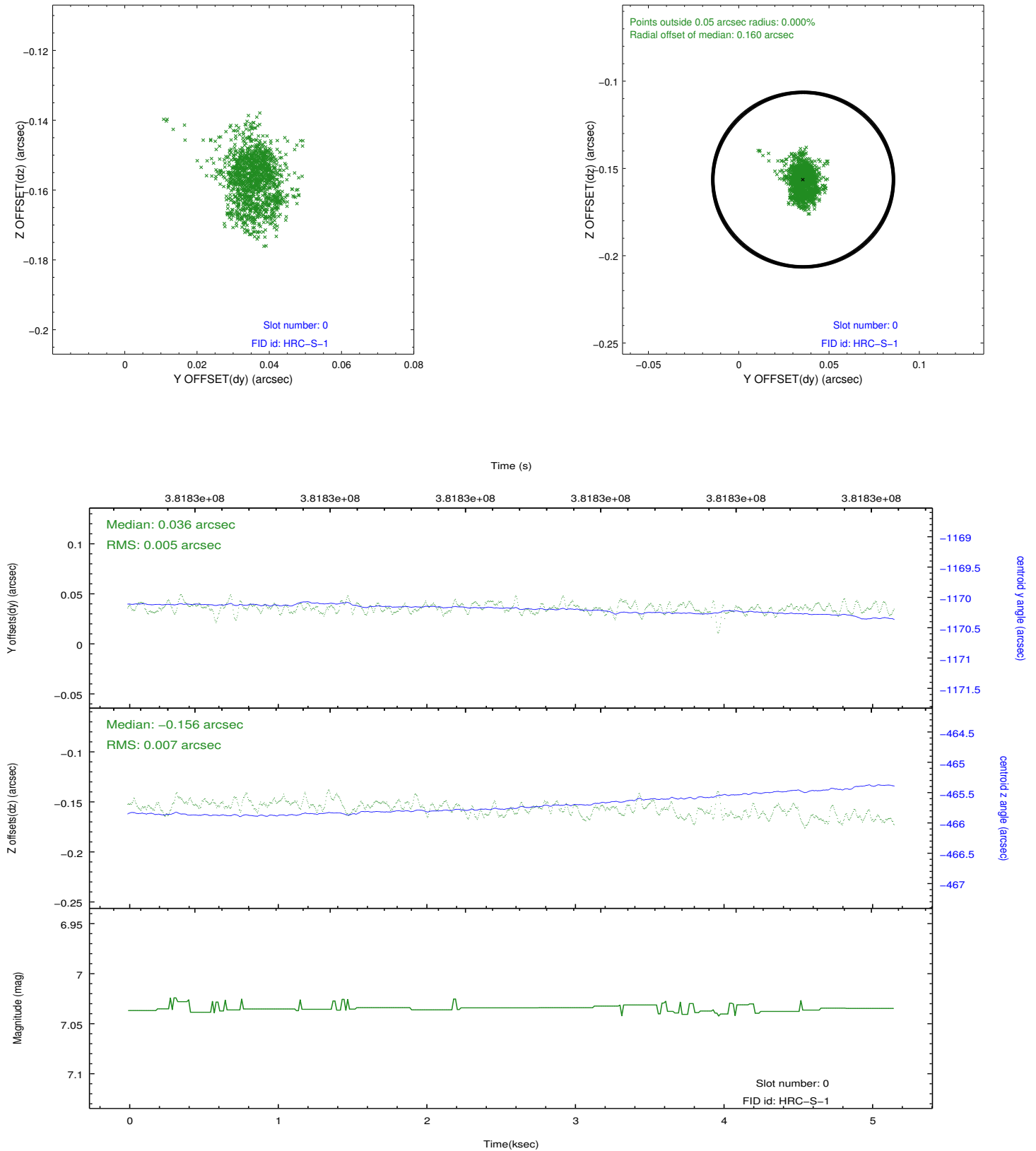


2.4.5 Slot 7

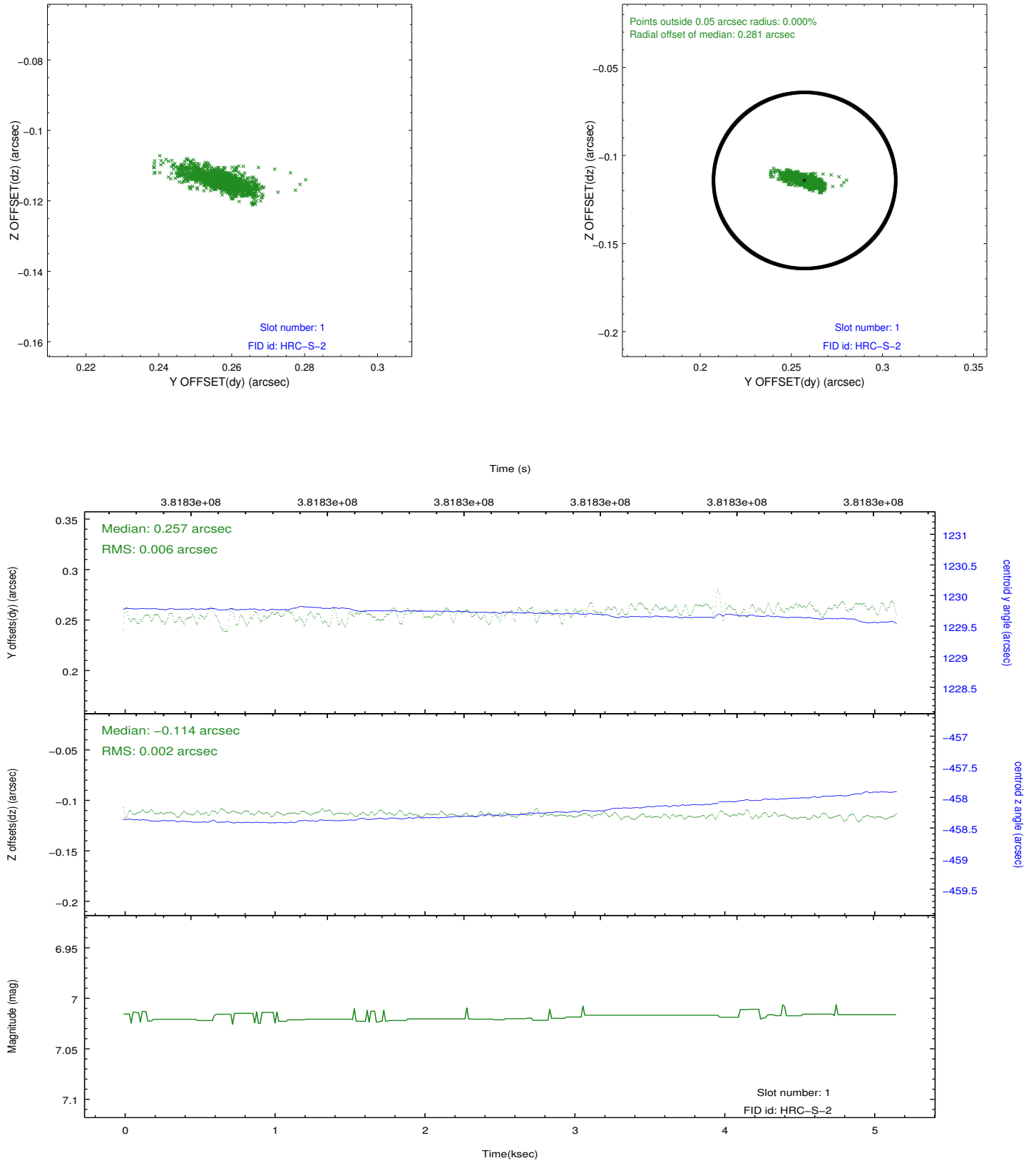


2.5 FID Slots

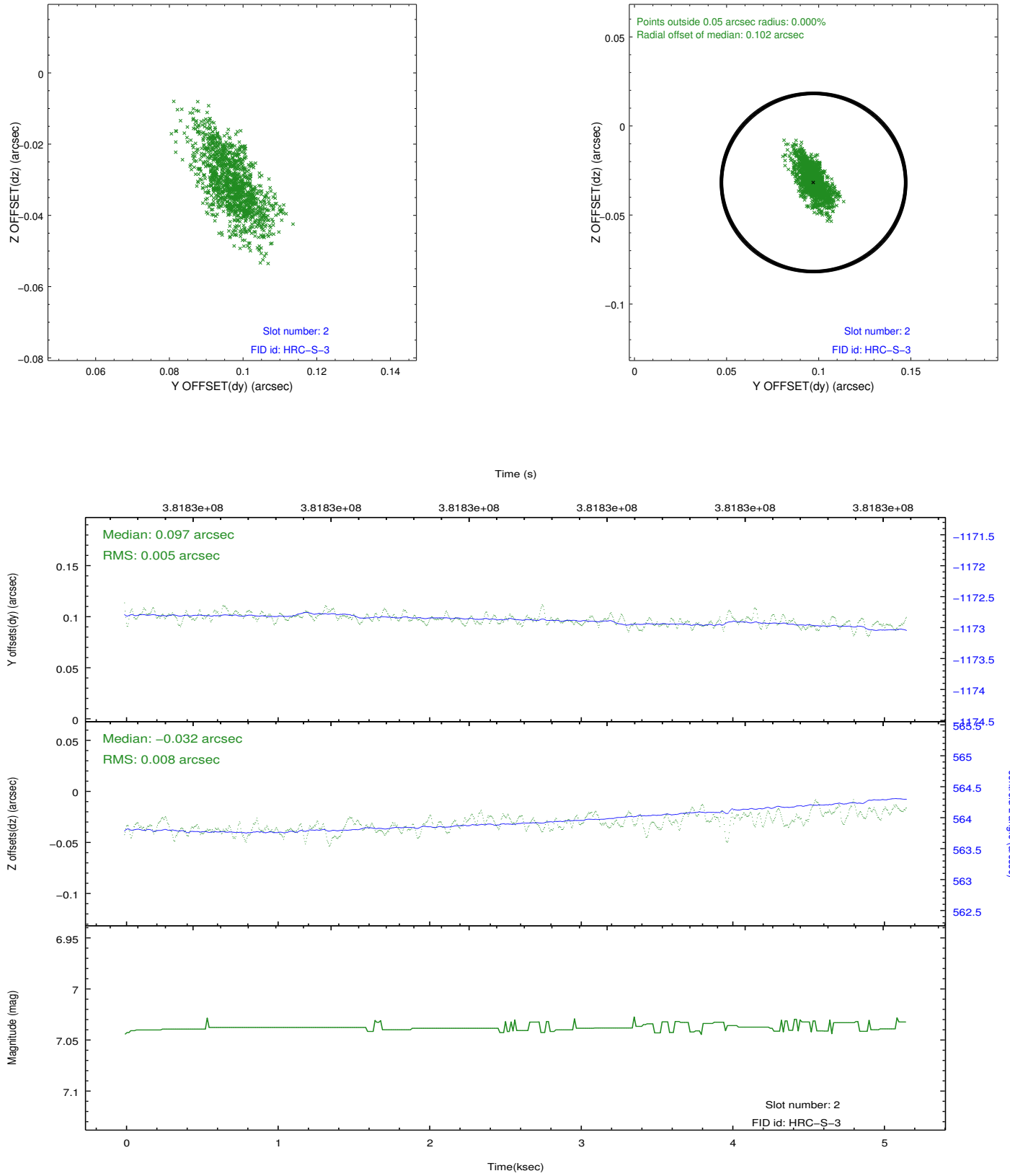
2.5.1 Slot 0



2.5.2 Slot 1

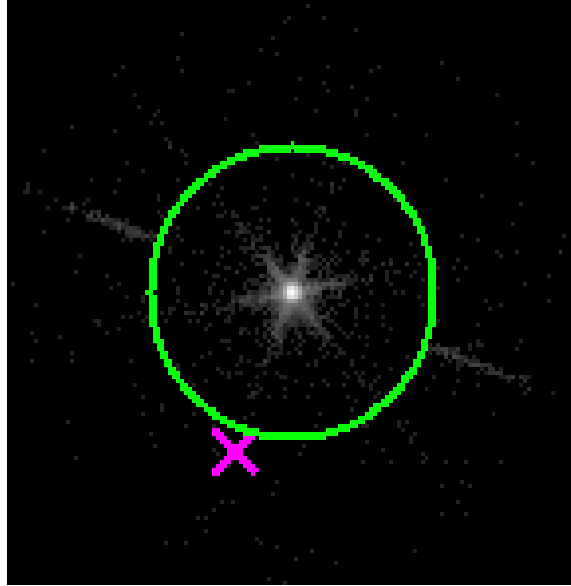


2.5.3 Slot 2

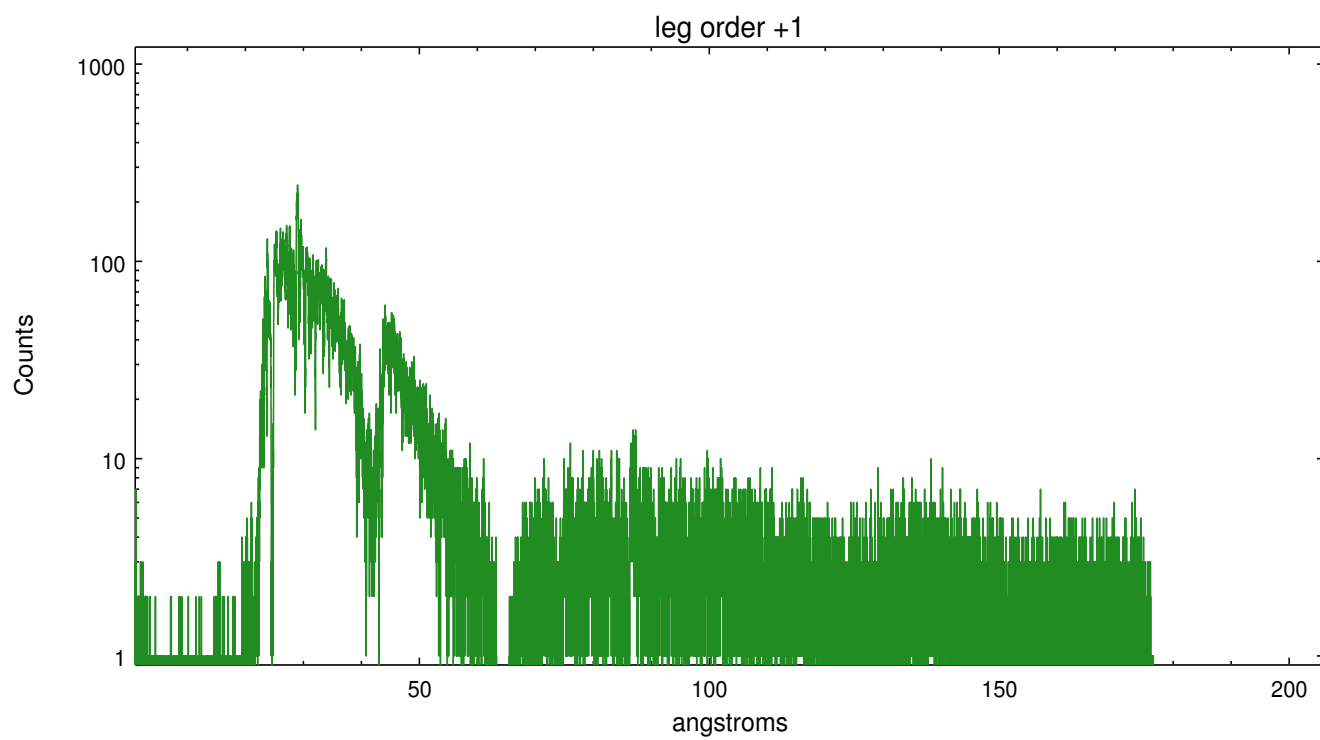
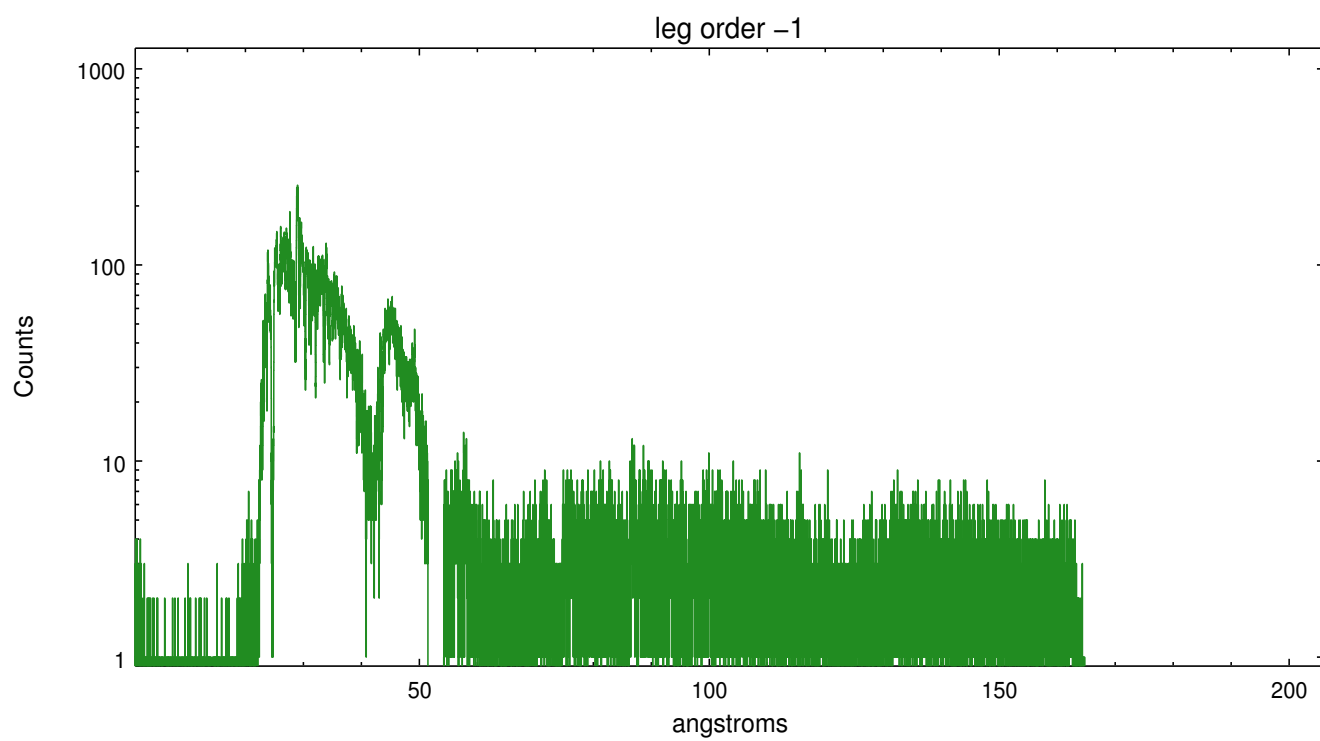


3 Gratings

3.1 LETG Arm



LETG Zero Order



A Summary

A.1 Status

V&V Scientist	Joy Nichols
V&V Date (YYYY-MM-DD)	2012.07.03
V&V Edition	1
V&V Disposition and Status	OK
V&V Charge Time	5.1588252613544

A.2 Comments

HRC livetime is significantly less than the ontime. Telemetry was saturated due to the brightness of the source and not all events were telemetered.