

V&V Reference Report

L2 ASCDS Version : 8.4.5

Observation 12207 - L2 Version 2
Chandra X-Ray Center

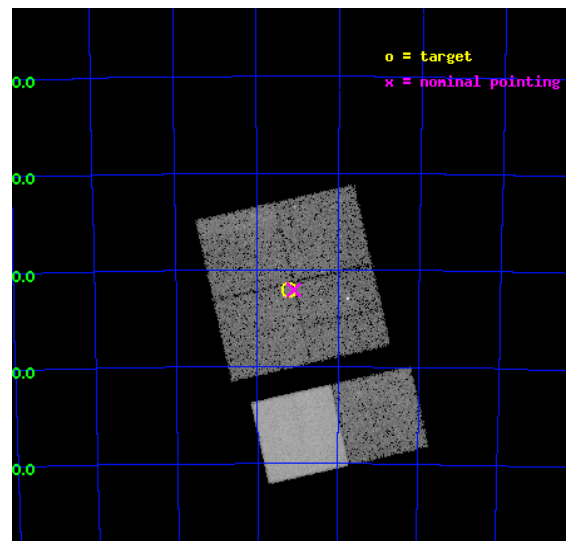
L2 Processing Date : Jun 24 2012

Contents

1	Front	2
2	OBI	3
2.1	OBI	3
2.1.1	Images	3
2.1.2	Bias	3
2.1.3	Parameters	4
2.1.4	Events	4
2.2	Compared Parameters	5
2.3	Aspect	6
2.4	Star Slots	9
2.4.1	Slot 3	9
2.4.2	Slot 4	10
2.4.3	Slot 5	11
2.4.4	Slot 6	12
2.4.5	Slot 7	13
2.5	FID Slots	14
2.5.1	Slot 0	14
2.5.2	Slot 1	15
2.5.3	Slot 2	16
A	Summary	17
A.1	Status	17
A.2	Comments	17

1 Front

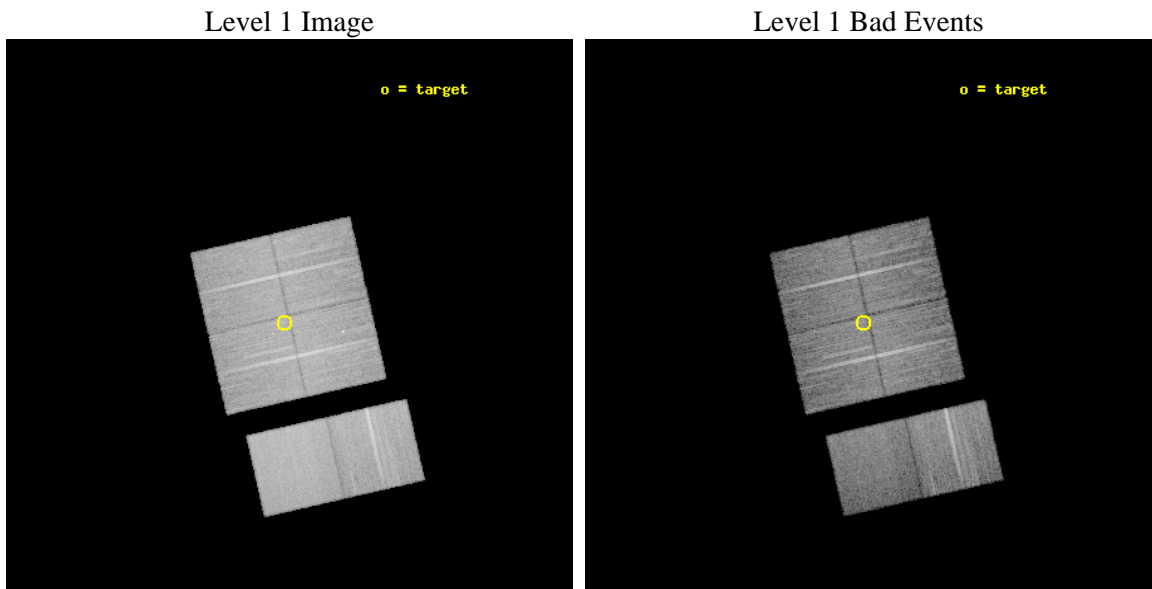
seq_num	200617	Sequence number
obs_id	12207	Observation id
title	Cosmic archaeology with Chandra: from a supergiant shell to young stellar objects in NGC 602	Proposal title
observer	Dr. Lidia Oskinova	Principal investigator
object	NGC 602	Source name
dtcycle	0	
cycle	P	events from which exps? Prim/Second/Both
ra_targ	22.301667	Observer's specified target RA [deg]
dec_targ	-73.533806	Observer's specified target Dec [deg]
ra_nom	22.273308241741	Nominal RA [deg]
dec_nom	-73.5344491156	Nominal Dec [deg]
roll_nom	167.18147628085	Nominal Roll [deg]
revision	2	Processing version of data
ontime	17606.399934471	Sum of GTIs [s]
livetime	17383.457097199	Livetime [s]
ontime0	17606.399934471	Sum of GTIs [s]
ontime1	17603.158914387	Sum of GTIs [s]
ontime2	17606.399934471	Sum of GTIs [s]
ontime3	17606.399934471	Sum of GTIs [s]
ontime6	17606.399934471	Sum of GTIs [s]
ontime7	17606.399934471	Sum of GTIs [s]
l2events	132047	Number of level 2 events



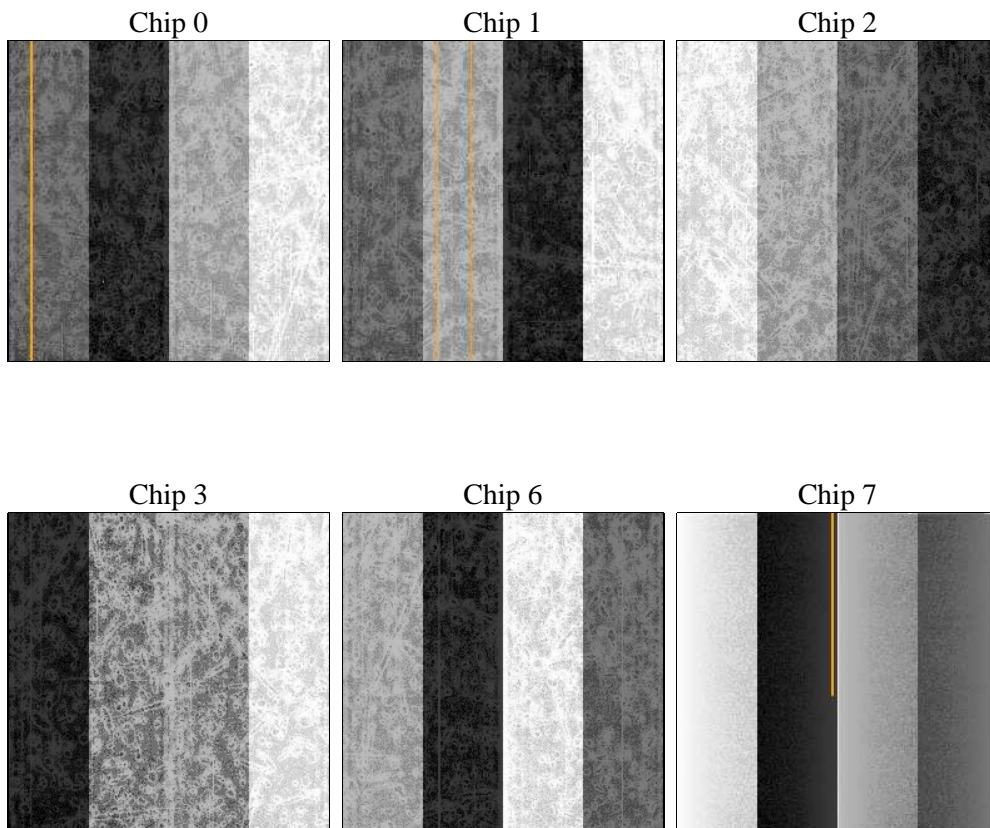
2 OBI

2.1 OBI

2.1.1 Images



2.1.2 Bias



2.1.3 Parameters

obi_num	0	Obi number	sched_exp_time	17500.000000	[s] Scheduled observation exposure time
ascdsver	8.4.5	Processing system revision	ontime	17606.399934471	Sum of GTIs [s]
caldsver	4.4.10	 	ontime0	17606.399934471	Sum of GTIs [s]
date	2012-06-24T21:52:21	Date and time of file creation	ontime1	17603.158914387	Sum of GTIs [s]
revision	2	Processing version of data	ontime2	17606.399934471	Sum of GTIs [s]
			ontime3	17606.399934471	Sum of GTIs [s]
			ontime6	17606.399934471	Sum of GTIs [s]
			ontime7	17606.399934471	Sum of GTIs [s]
			l1events	840245	Number of level 1 events

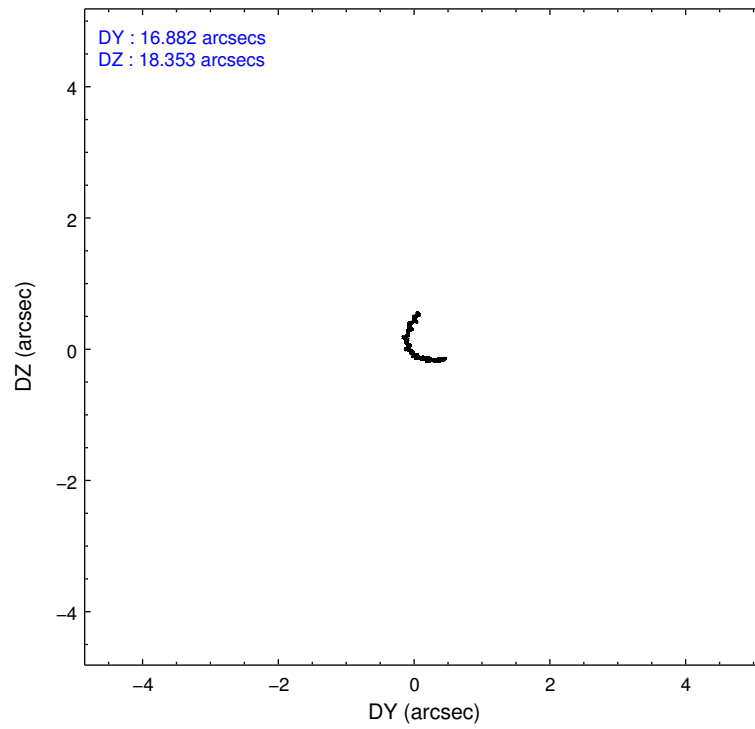
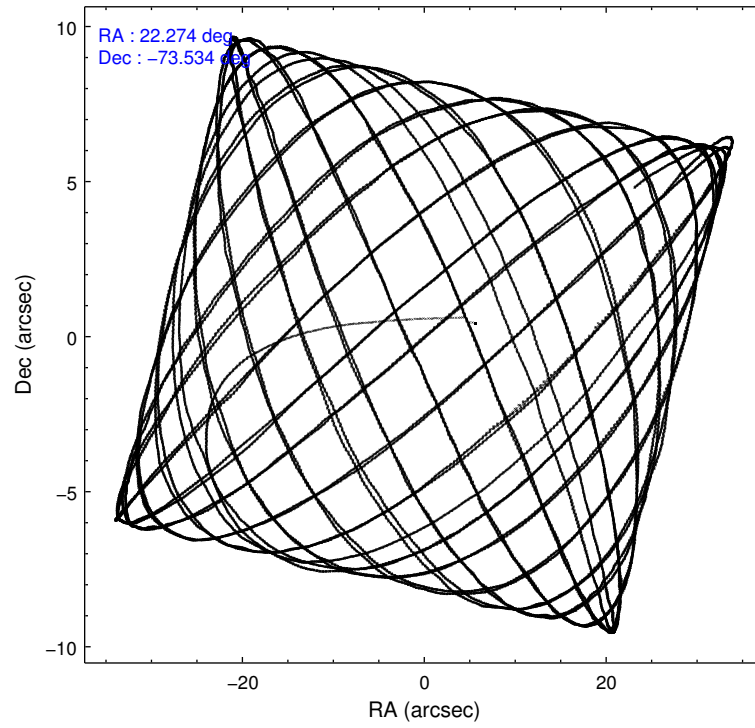
2.1.4 Events

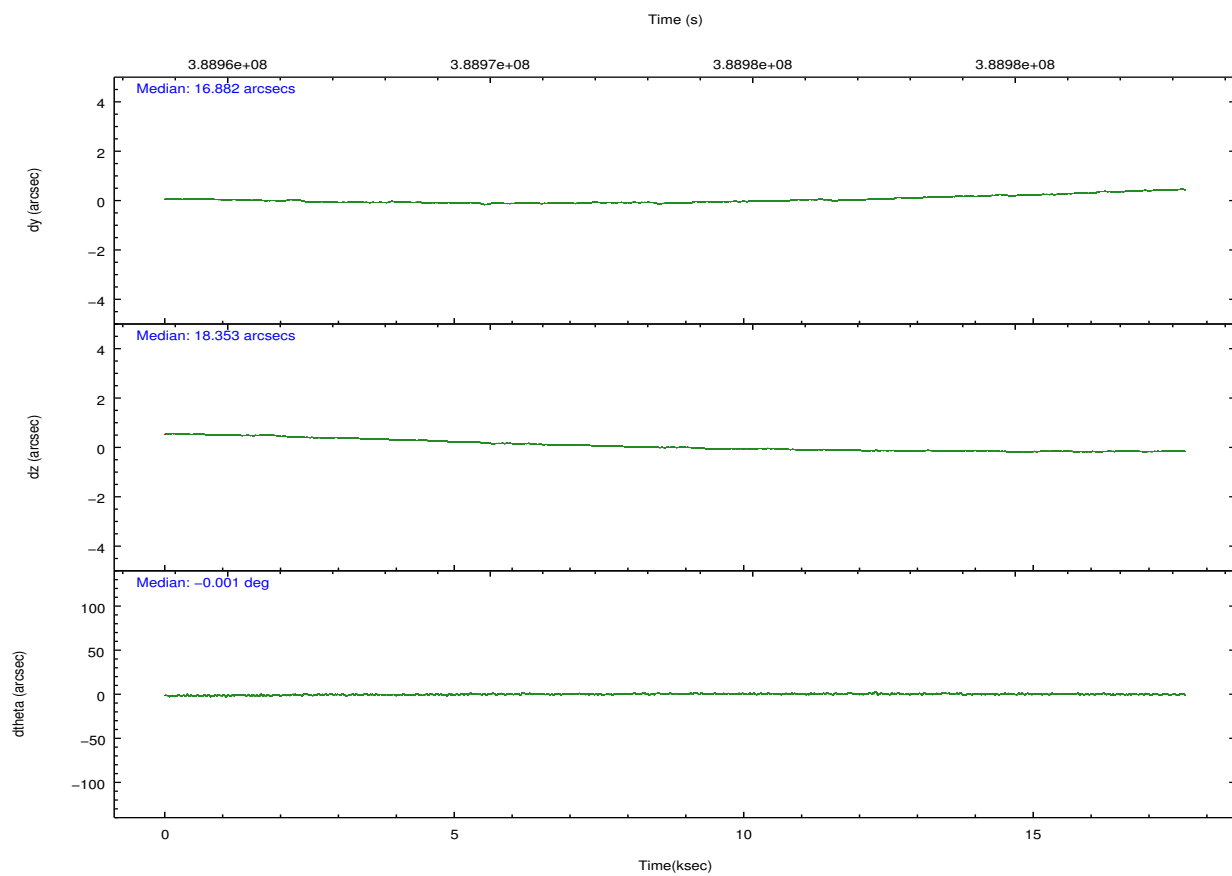
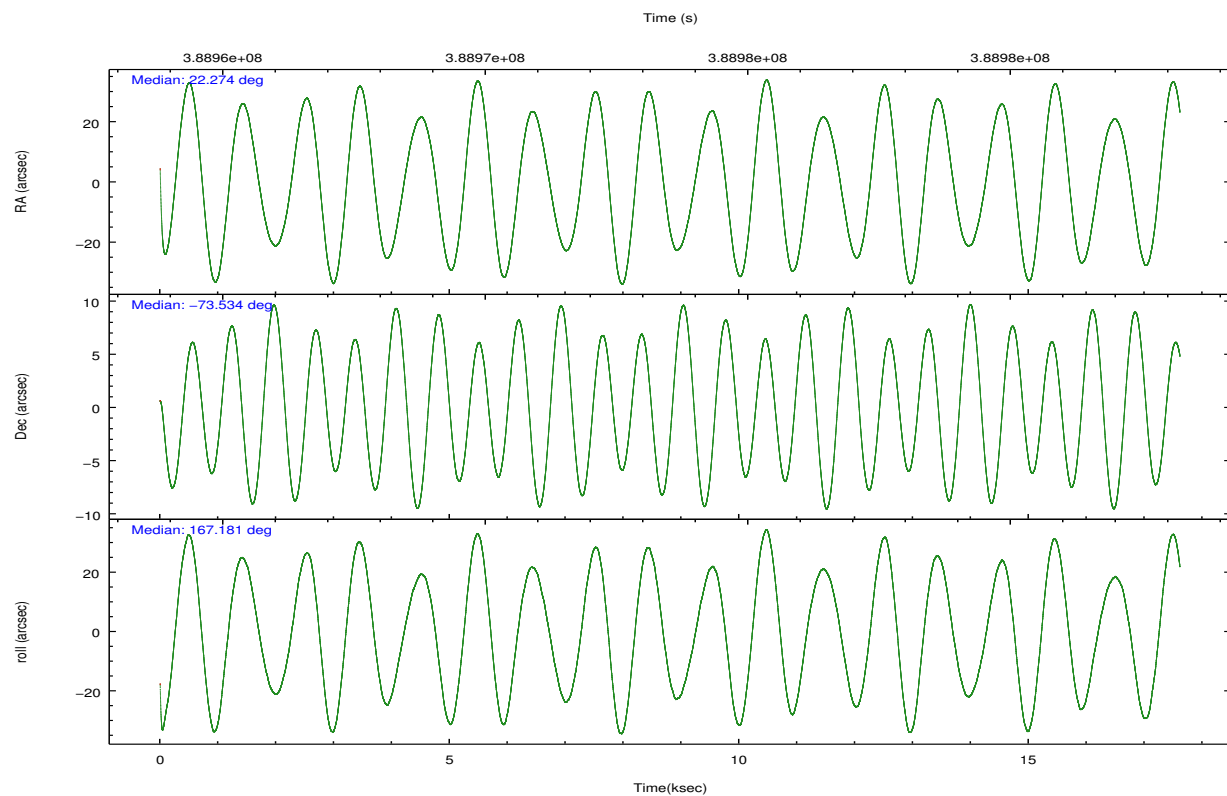
	ccd 0	ccd 1	ccd 2	ccd 3	ccd 6	ccd 7		ccd 0	ccd 1	ccd 2	ccd 3	ccd 6	ccd 7
level 1 events	126951	126264	140228	132972	146202	167628	grade 0 events	5279	5834	5954	5160	5725	7142
rejected events	112667	110634	125328	119377	131419	95084		4%	4%	4%	3%	3%	4%
rejected %	88%	87%	89%	89%	89%	56%	grade 1 events	78	71	109	71	78	251
								0%	0%	0%	0%	0%	0%
							grade 2 events	3646	3791	3650	3170	3480	15589
								2%	3%	2%	2%	2%	9%
							grade 3 events	1630	1710	1556	1513	1698	6840
								1%	1%	1%	1%	1%	4%
							grade 4 events	1492	1667	1562	1488	1579	6945
								1%	1%	1%	1%	1%	4%
							grade 5 events	5556	5623	5238	6064	6400	17685
								4%	4%	3%	4%	4%	10%
							grade 6 events	2940	3367	2818	2929	3455	39913
								2%	2%	2%	2%	2%	23%
							grade 7 events	106330	104201	119341	112577	123787	73263
								83%	82%	85%	84%	84%	43%

2.2 Compared Parameters

Parameter	Planned	Actual	Parameter	Planned	Actual
Instrument	ACIS	ACIS	Obspar format version number	7	7
Detector	ACIS-012367	ACIS-012367	Obspar file type	PREDICTED	ACTUAL
Grating	NONE	NONE	Obspar update status	NONE	UPDATED
Data mode	FAINT	FAINT	CCD I0 on	Y	Y
Observation mode	POINTING	POINTING	CCD I1 on	Y	Y
[deg] Pointing RA	22.365768	22.27330824174146	CCD I2 on	Y	Y
[deg] Pointing Dec	-73.526187	-73.5344491156004	CCD I3 on	Y	Y
[deg] Pointing Roll	167.061468	167.1814762808505	CCD S0 on	N	N
[mm] SIM focus pos	-0.782348	-0.7809083437167272	CCD S1 on	N	N
[mm] SIM defocus	0	0.001439871863259334	CCD S2 on	O1	Y
[mm] SIM translation stage pos	-233.592463	-233.5874344608287	CCD S3 on	Y	Y
[mm] SIM translation stage offset	0	-0.005018542100998502	CCD S4 on	N	N
[s] Observation start time (MET)	388964824.184000	388963238.75766	CCD S5 on	N	N
Observation start date	2010-04-29T21:45:58	2010-04-29T21:20:38	Number of optional ACIS chips dropped	0	0
[s] Observation end time (MET)	388982324.184000	388983351.30868	On-chip summing requested	N	N
Observation end date	2010-04-30T02:37:38	2010-04-30T02:55:51	Subarray requested	NONE	NONE
Read mode	TIMED	TIMED	Alternating exposures requested	N	N
			[s] Primary exposure time	0.000000	3.2

2.3 Aspect



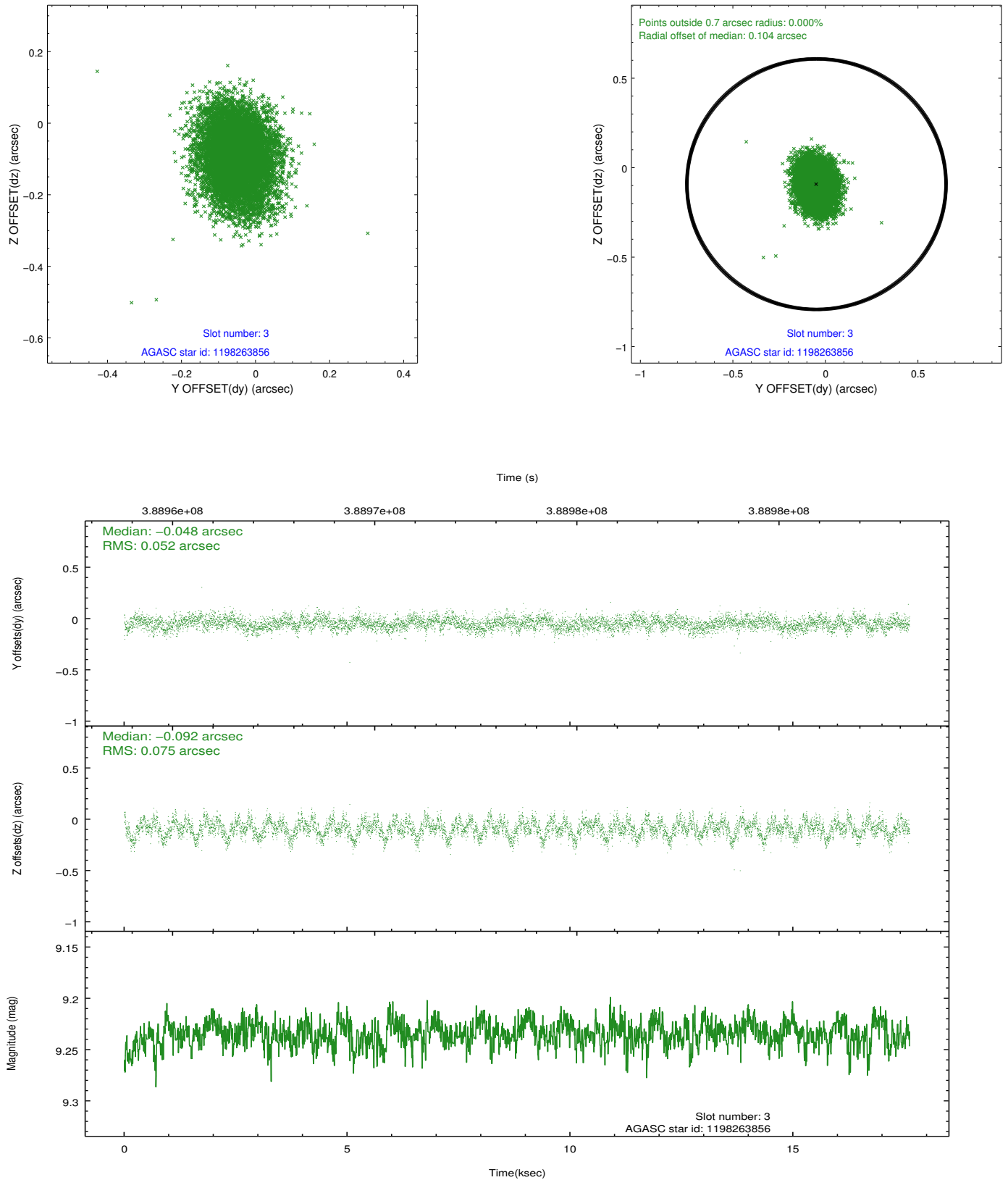


Slot Statistics

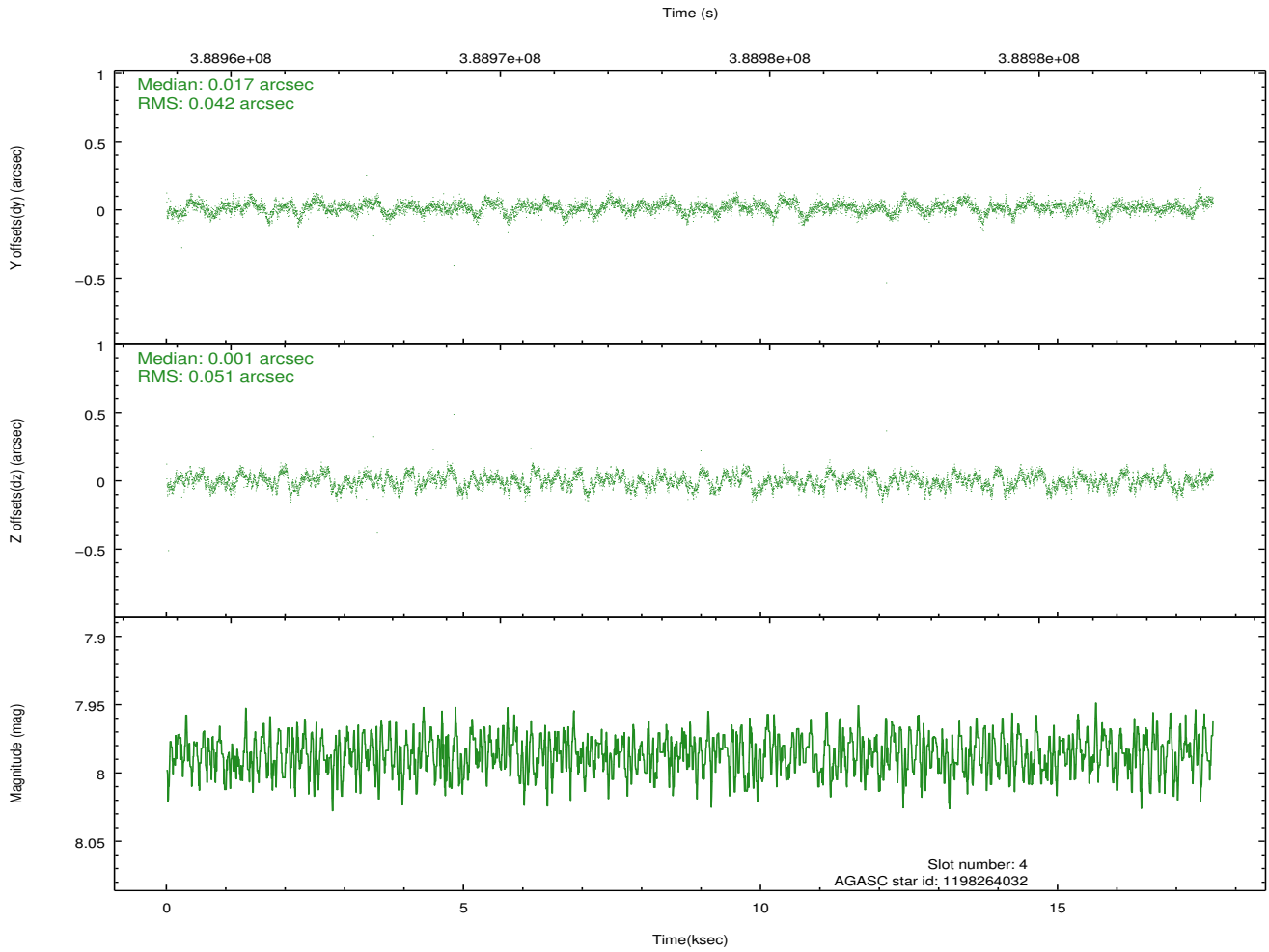
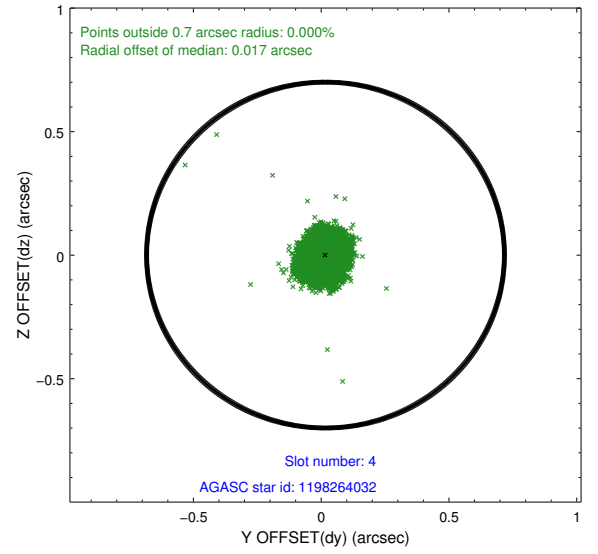
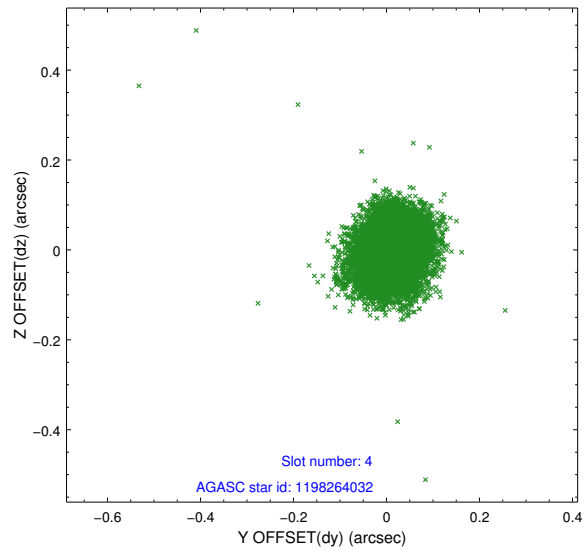
slot	status	id	mag	n_pts	med_dy	med_dz	dr1	dr2	ra	dec	mean_y	mean_z
0	FID	ACIS-I-2	6.91	4297	0.011	-0.009	0.016	0.029	0.000000	0.000000	-771.69	-848.49
1	FID	ACIS-I-5	6.98	4297	-0.178	0.048	0.012	0.024	0.000000	0.000000	-1826.07	1055.31
2	FID	ACIS-I-6	7.00	4296	0.074	0.030	0.010	0.016	0.000000	0.000000	387.85	1700.05
3	GUIDE	1198263856	9.23	8579	-0.048	-0.092	0.097	0.159	23.344483	-73.858921	-1224.18	956.01
4	GUIDE	1198264032	7.99	8593	0.017	0.001	0.069	0.109	22.563131	-73.173817	84.24	-1281.32
5	GUIDE	1198268712	8.52	8588	0.047	0.085	0.065	0.106	21.961983	-73.269598	614.54	-805.25
6	GUIDE	1198272400	9.15	8587	-0.165	-0.165	0.122	0.182	20.411923	-73.620598	1849.85	806.87
7	GUIDE	1199188856	8.99	8580	0.156	0.176	0.088	0.144	24.755443	-73.162573	-2145.09	-1784.55

2.4 Star Slots

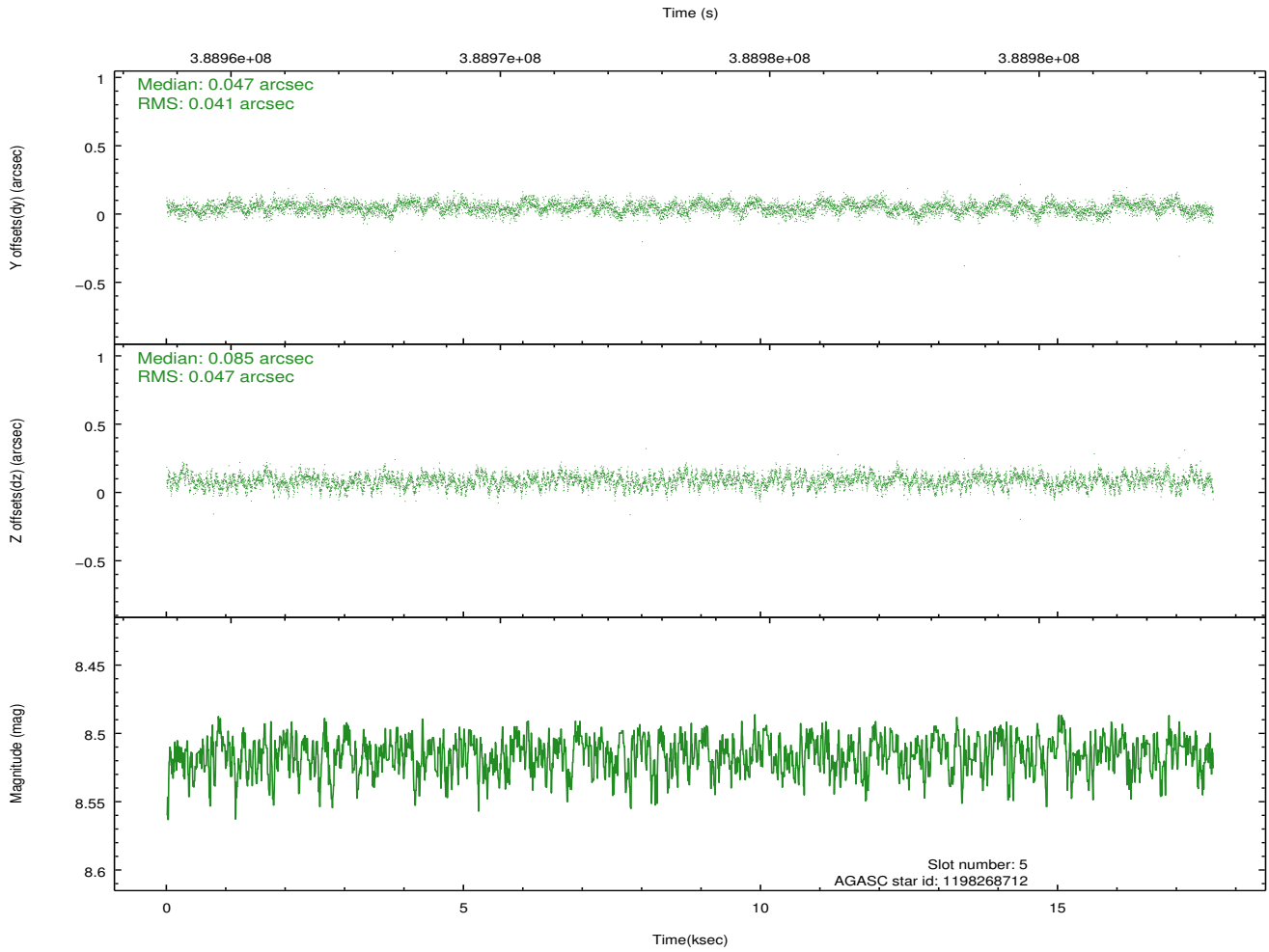
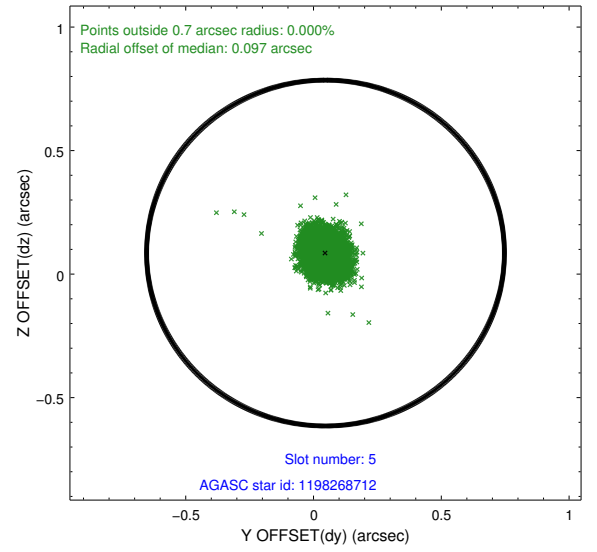
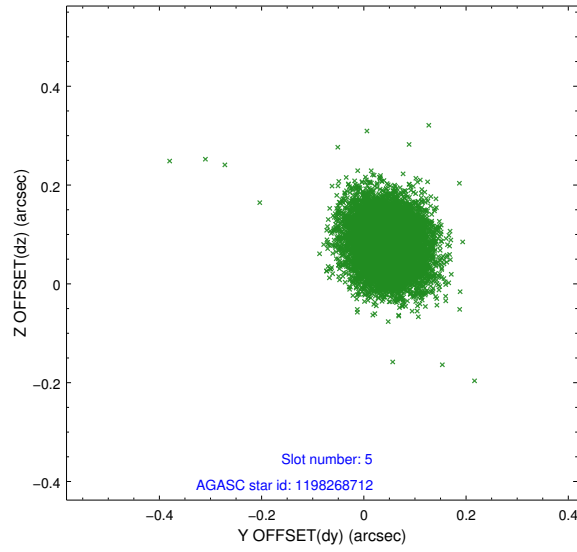
2.4.1 Slot 3



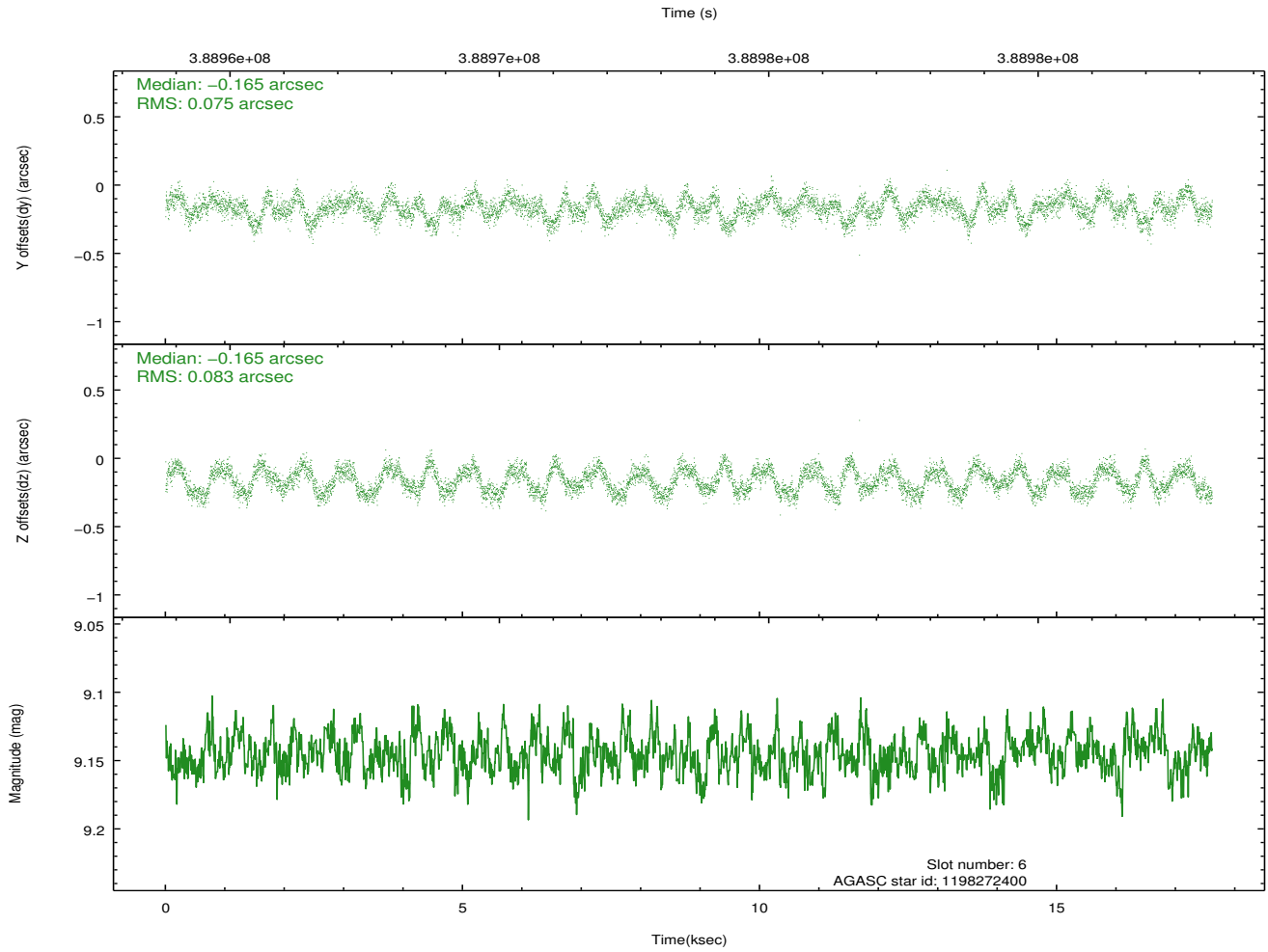
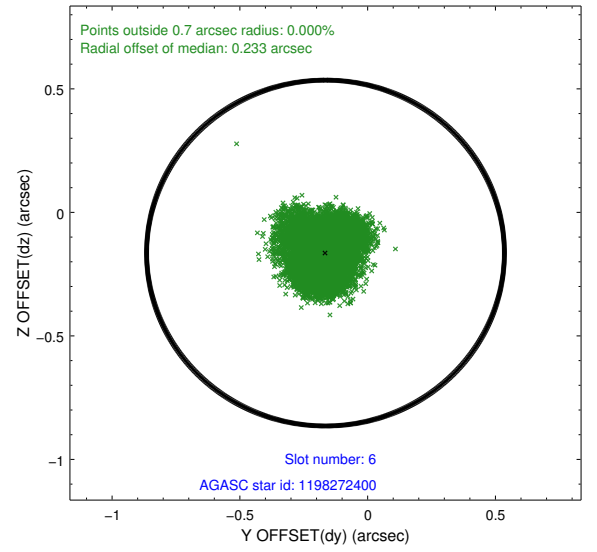
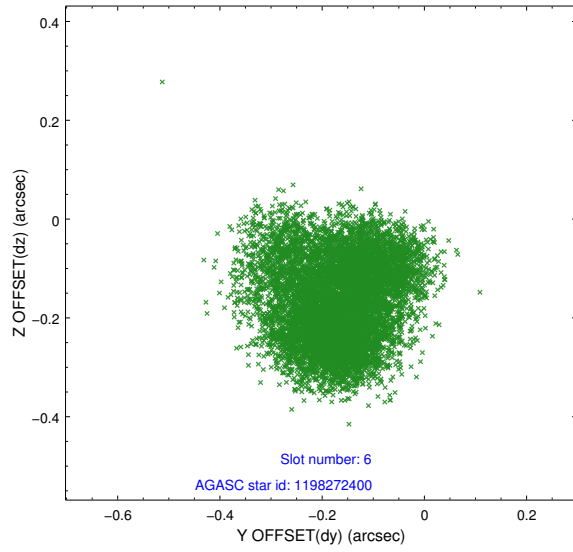
2.4.2 Slot 4



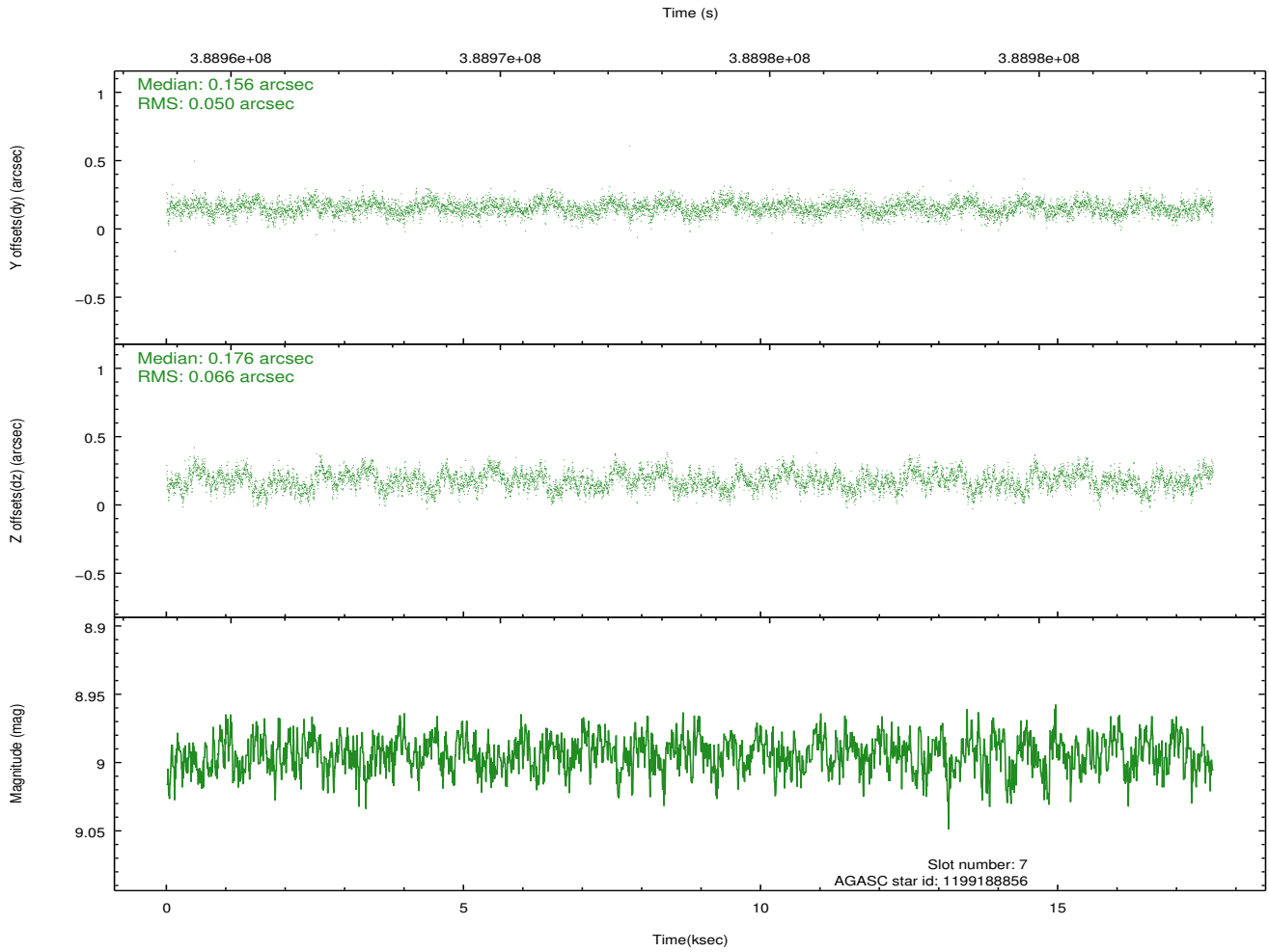
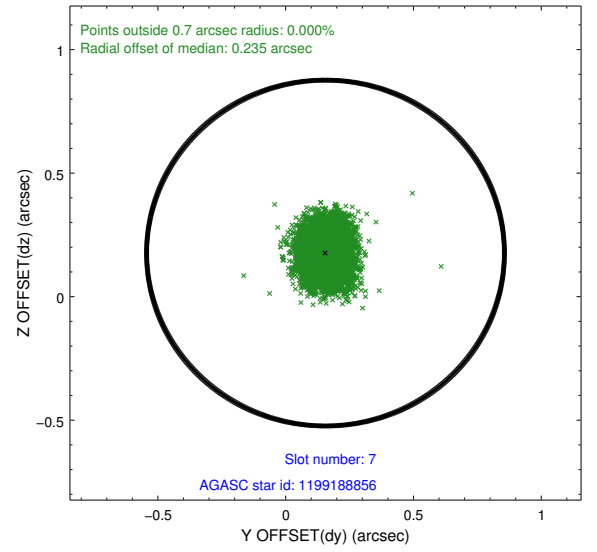
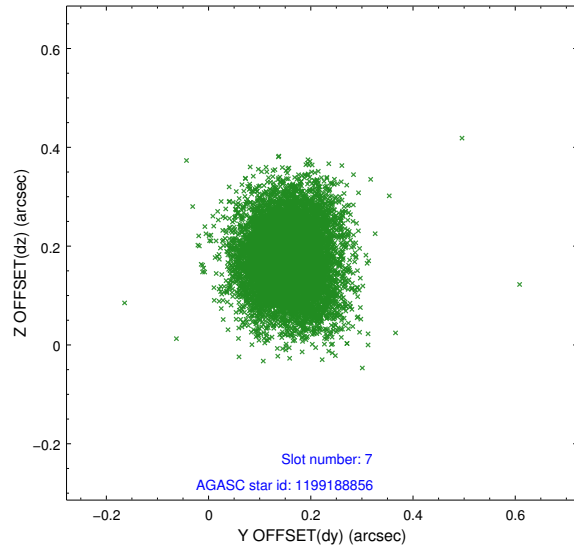
2.4.3 Slot 5



2.4.4 Slot 6

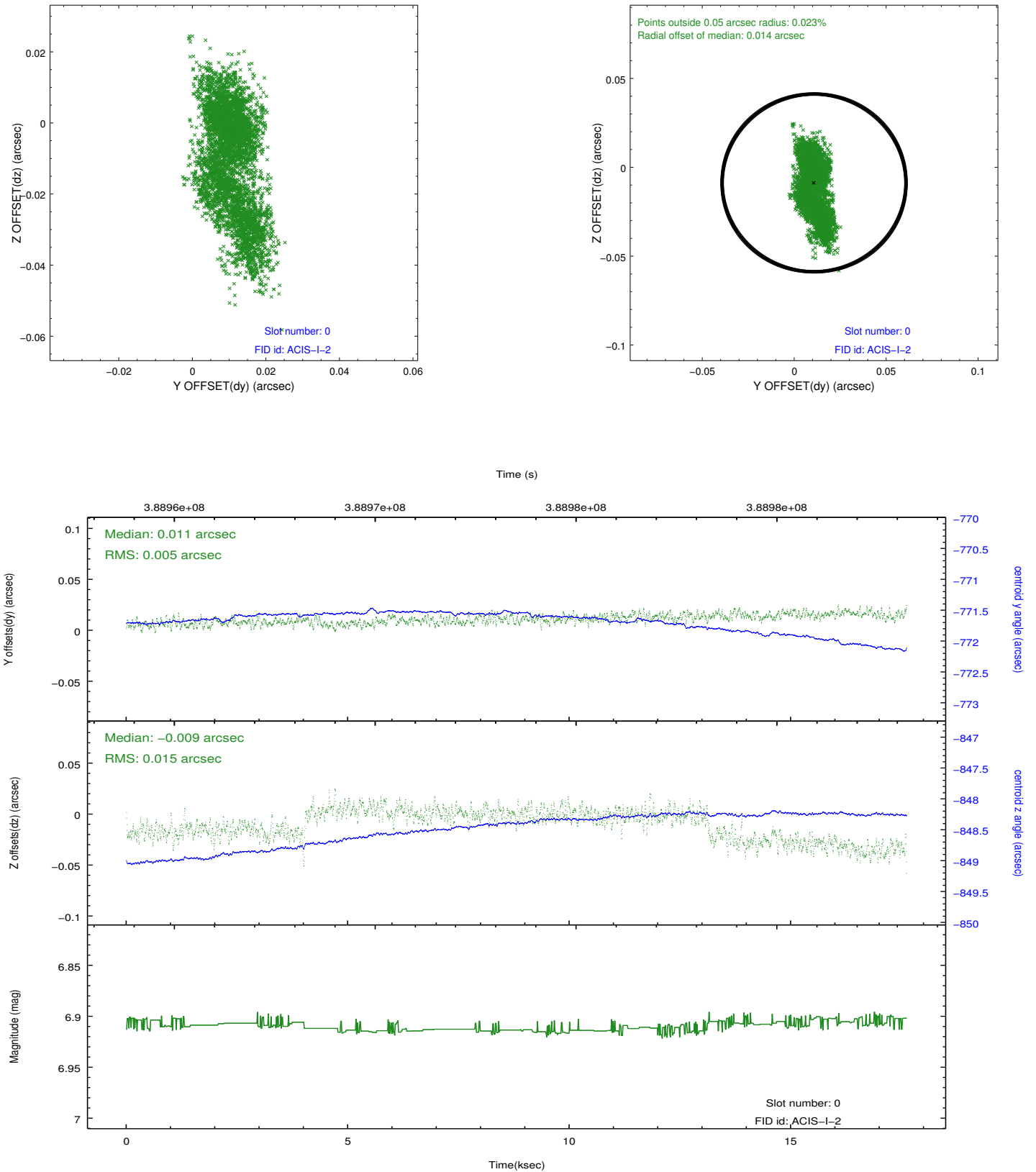


2.4.5 Slot 7

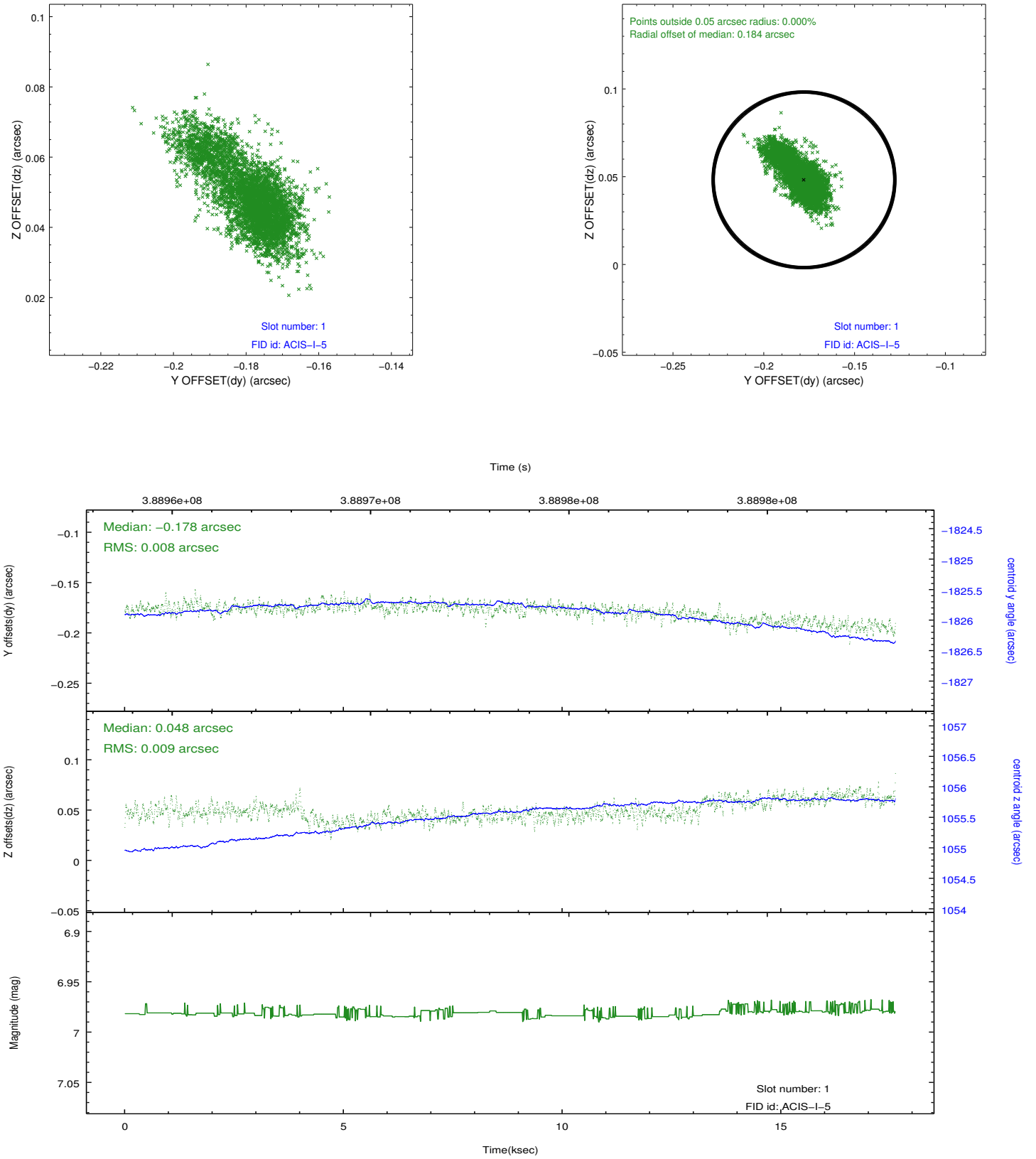


2.5 FID Slots

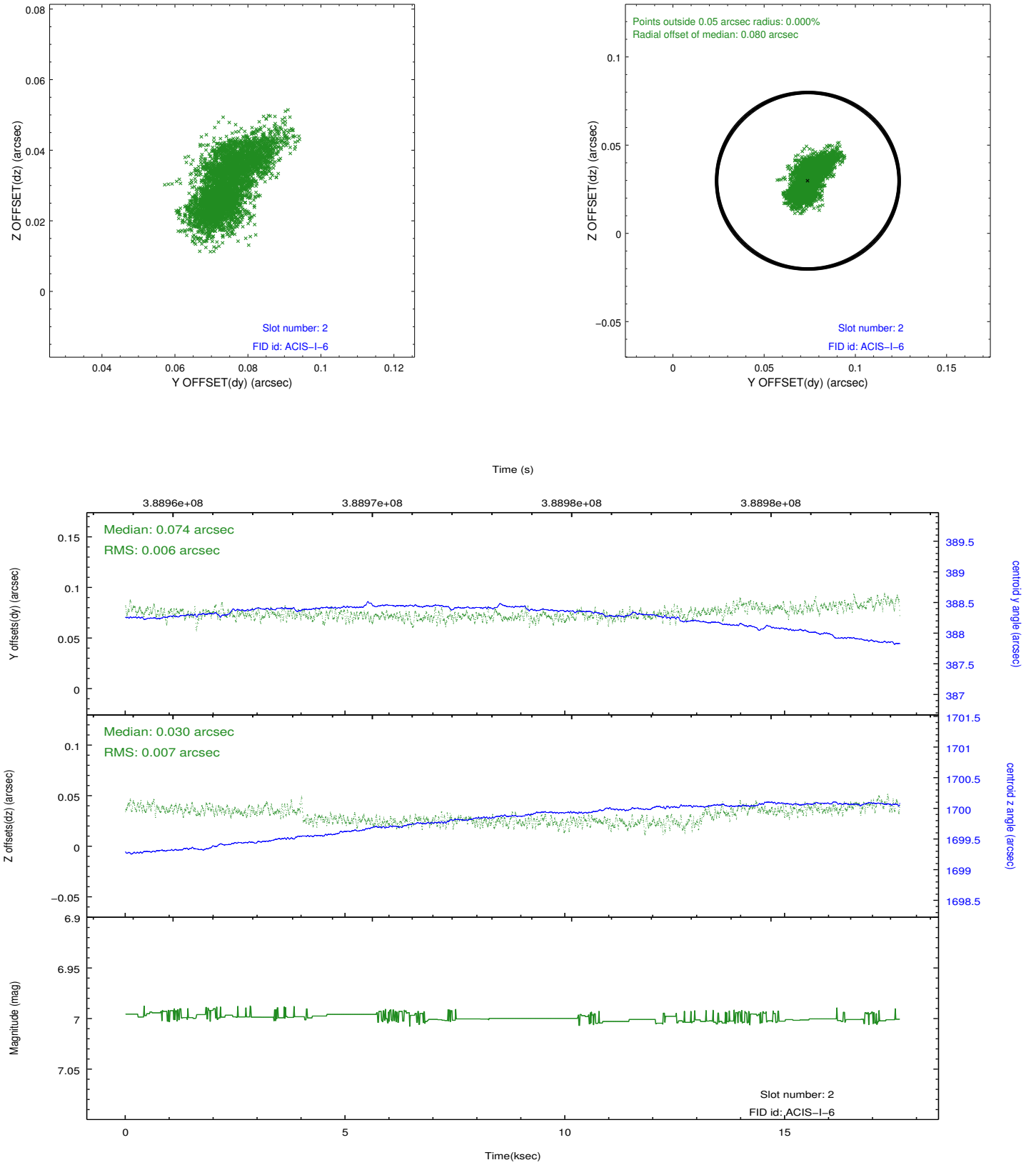
2.5.1 Slot 0



2.5.2 Slot 1



2.5.3 Slot 2



A Summary

A.1 Status

V&V Scientist	Beth Sundheim
V&V Date (YYYY-MM-DD)	2012.07.01
V&V Edition	1
V&V Disposition and Status	OK
V&V Charge Time	17.606399934471

A.2 Comments