

V&V Reference Report

L2 ASCDS Version : 8.4.5

Observation 12134 - L2 Version 2
Chandra X-Ray Center

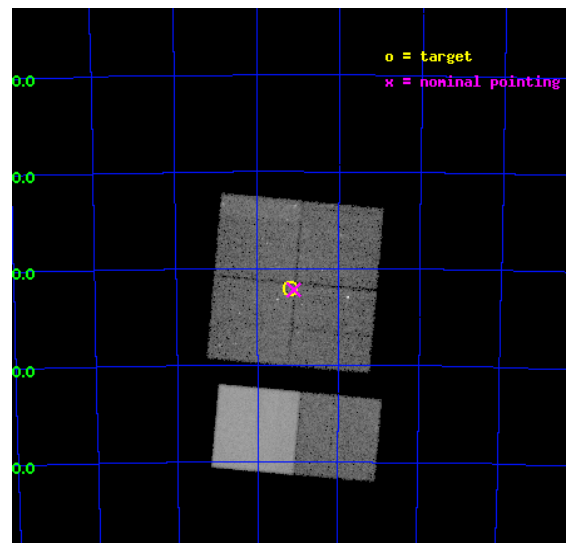
L2 Processing Date : Jun 23 2012

Contents

1	Front	2
2	OBI	3
2.1	OBI	3
2.1.1	Images	3
2.1.2	Bias	3
2.1.3	Parameters	4
2.1.4	Events	4
2.2	Compared Parameters	5
2.3	Aspect	6
2.4	Star Slots	9
2.4.1	Slot 3	9
2.4.2	Slot 4	10
2.4.3	Slot 5	11
2.4.4	Slot 6	12
2.4.5	Slot 7	13
2.5	FID Slots	14
2.5.1	Slot 0	14
2.5.2	Slot 1	15
2.5.3	Slot 2	16
A	Summary	17
A.1	Status	17
A.2	Comments	17

1 Front

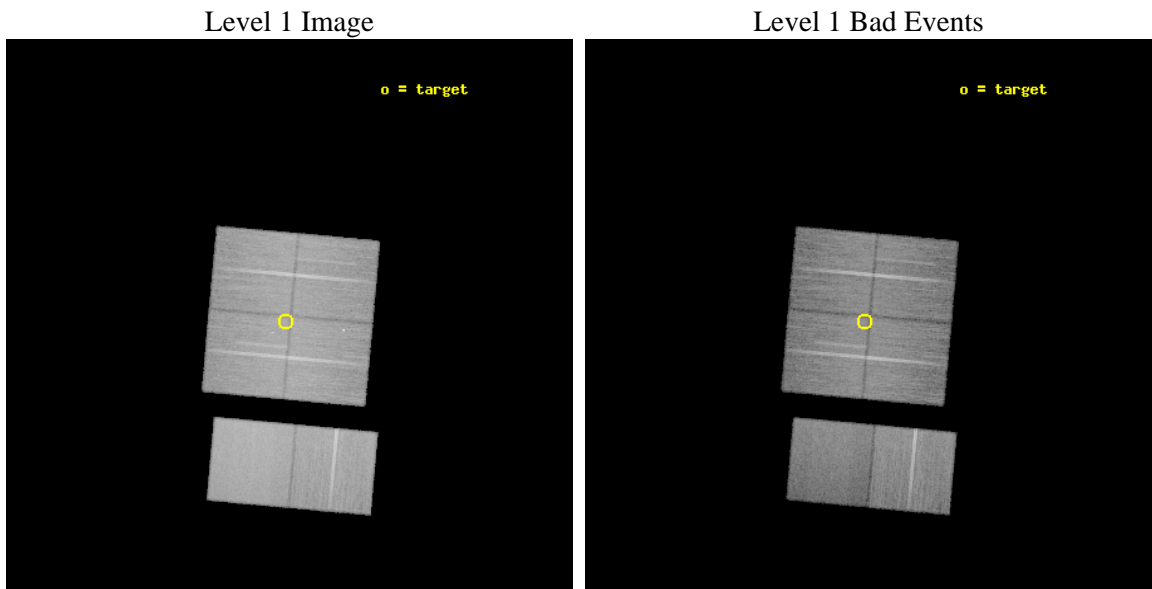
seq_num	200617	Sequence number
obs_id	12134	Observation id
title	Cosmic archaeology with Chandra: from a supergiant shell to young stellar objects in NGC 602	Proposal title
observer	Dr. Lidia Oskinova	Principal investigator
object	NGC 602	Source name
dtcycle	0	
cycle	P	events from which exps? Prim/Second/Both
ra_targ	22.301667	Observer's specified target RA [deg]
dec_targ	-73.533806	Observer's specified target Dec [deg]
ra_nom	22.275280075799	Nominal RA [deg]
dec_nom	-73.53689712125	Nominal Dec [deg]
roll_nom	185.18337646443	Nominal Roll [deg]
revision	2	Processing version of data
ontime	33153.805237412	Sum of GTIs [s]
livetime	32733.991792672	Livetime [s]
ontime0	33153.682117403	Sum of GTIs [s]
ontime1	33153.723157406	Sum of GTIs [s]
ontime2	33153.764197409	Sum of GTIs [s]
ontime3	33153.805237412	Sum of GTIs [s]
ontime6	33153.887317419	Sum of GTIs [s]
ontime7	33153.846277416	Sum of GTIs [s]
l2events	241668	Number of level 2 events



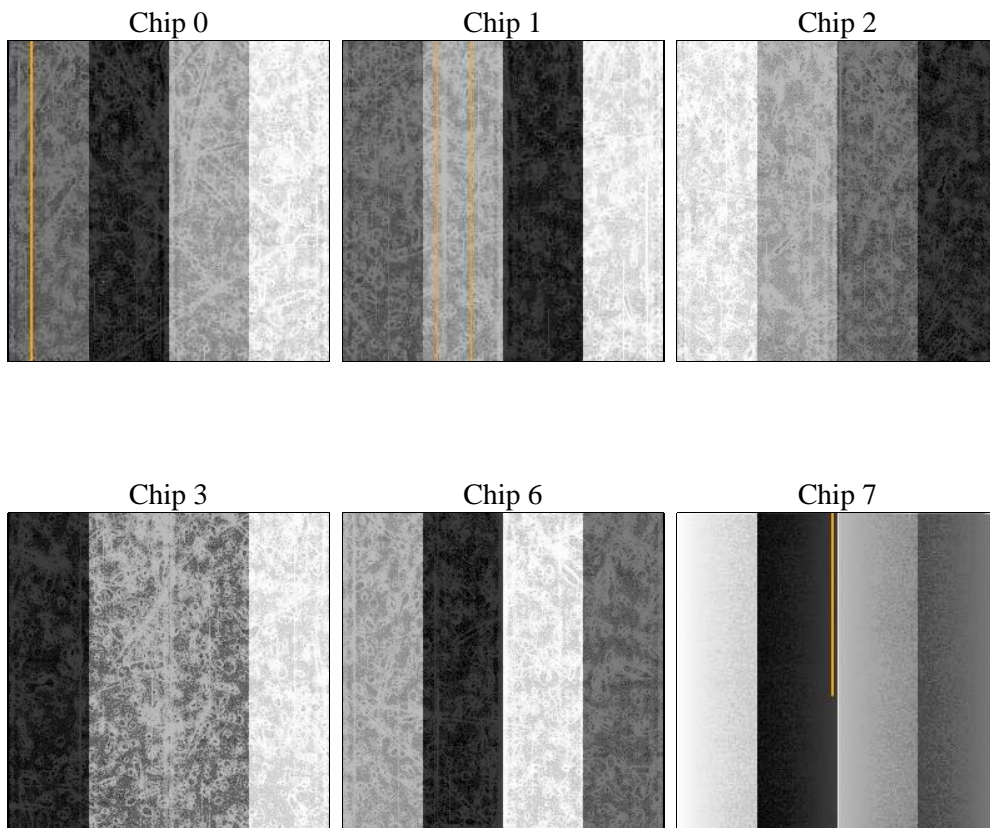
2 OBI

2.1 OBI

2.1.1 Images



2.1.2 Bias



2.1.3 Parameters

obi_num	0	Obi number	sched_exp_time	33000.000000	[s] Scheduled observation exposure time
ascdsver	8.4.5	Processing system revision	ontime	33153.805237412	Sum of GTIs [s]
caldsver	4.4.10	 	ontime0	33153.682117403	Sum of GTIs [s]
date	2012-06-23T19:43:30	Date and time of file creation	ontime1	33153.723157406	Sum of GTIs [s]
revision	2	Processing version of data	ontime2	33153.764197409	Sum of GTIs [s]
			ontime3	33153.805237412	Sum of GTIs [s]
			ontime6	33153.887317419	Sum of GTIs [s]
			ontime7	33153.846277416	Sum of GTIs [s]
			l1events	1425035	Number of level 1 events

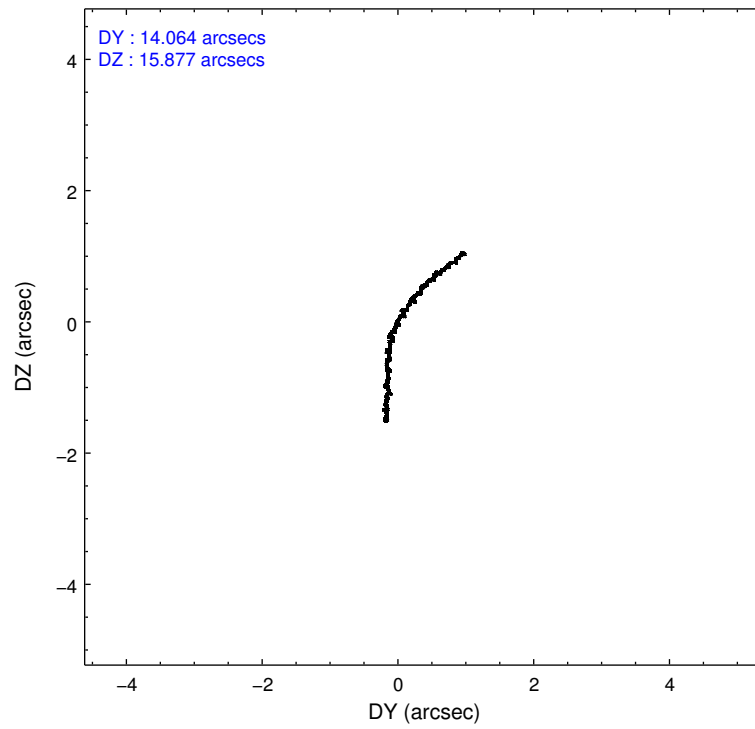
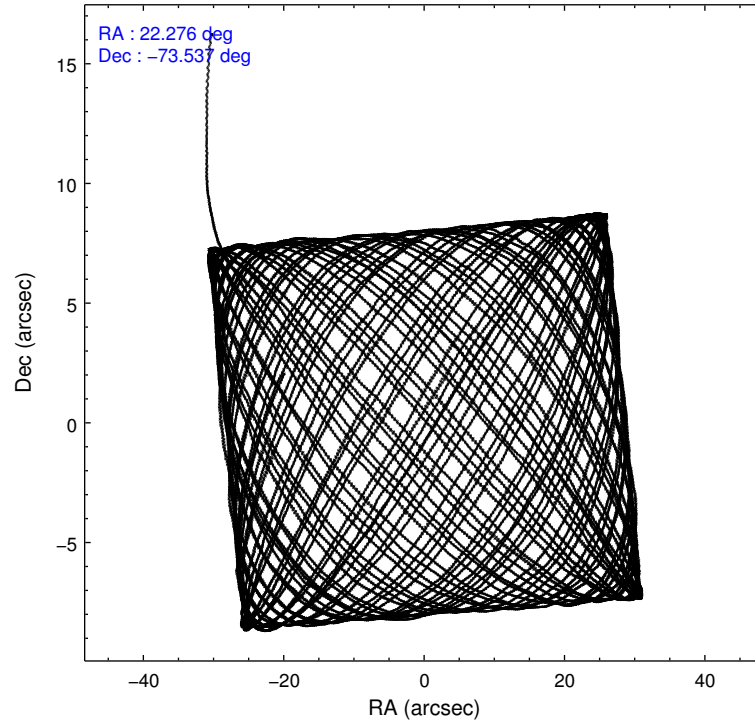
2.1.4 Events

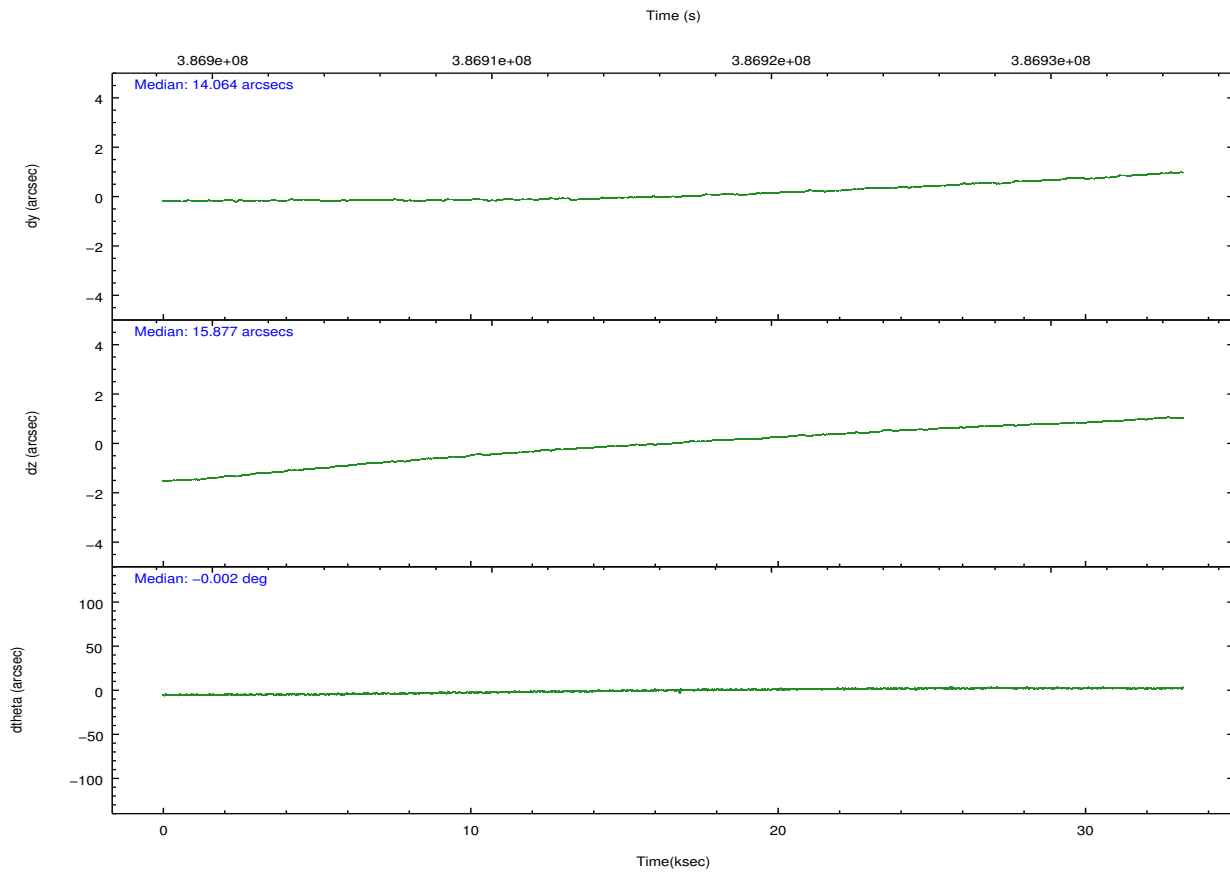
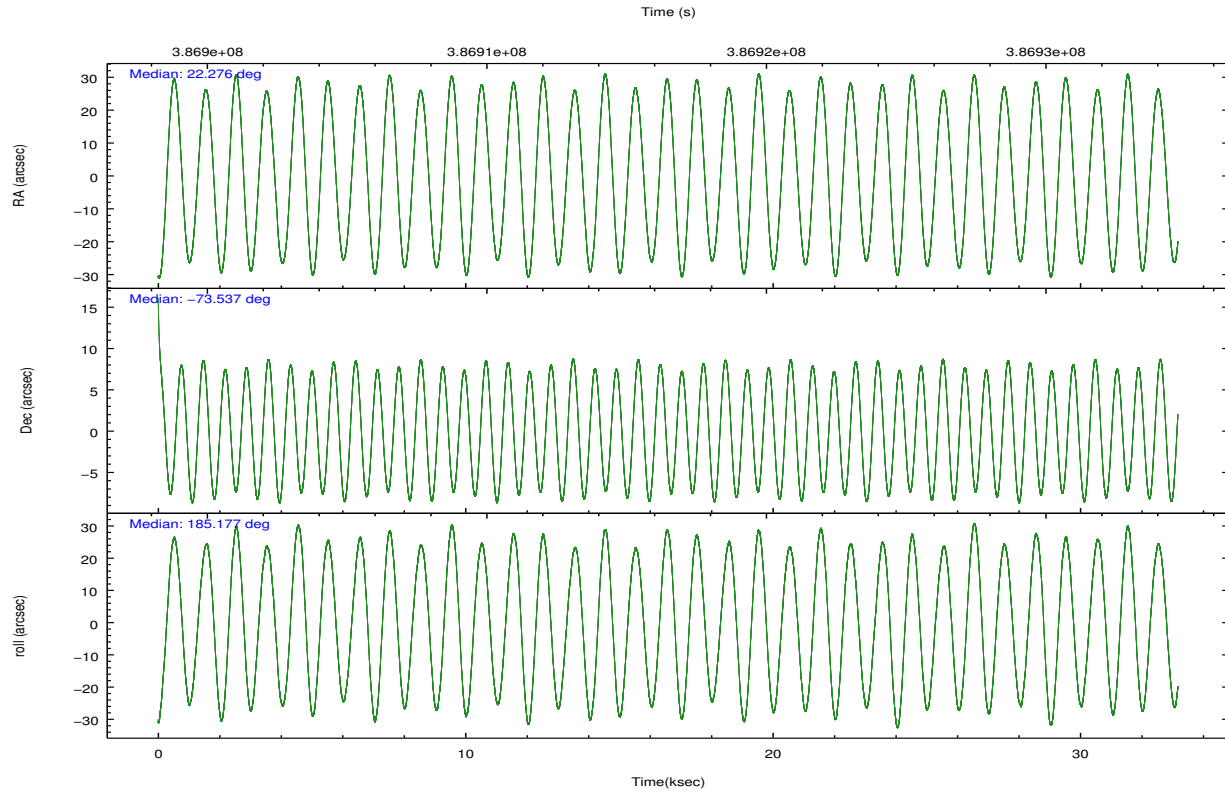
	ccd 0	ccd 1	ccd 2	ccd 3	ccd 6	ccd 7		ccd 0	ccd 1	ccd 2	ccd 3	ccd 6	ccd 7
level 1 events	211298	216737	234929	228991	243048	290032	grade 0 events	8932	10495	10285	8787	9389	12410
rejected events	185888	187835	208103	204626	216289	155991		4%	4%	4%	3%	3%	4%
rejected %	87%	86%	88%	89%	88%	53%	grade 1 events	124	133	142	118	140	358
								0%	0%	0%	0%	0%	0%
							grade 2 events	6265	6628	6336	5337	6059	27454
								2%	3%	2%	2%	2%	9%
							grade 3 events	2773	2906	2656	2599	2739	12096
								1%	1%	1%	1%	1%	4%
							grade 4 events	2483	3056	2672	2742	2719	12031
								1%	1%	1%	1%	1%	4%
							grade 5 events	9352	9950	9051	10506	10676	30363
								4%	4%	3%	4%	4%	10%
							grade 6 events	4959	5822	4885	4903	5856	70070
								2%	2%	2%	2%	2%	24%
							grade 7 events	176410	177747	198902	193999	205470	125250
								83%	82%	84%	84%	84%	43%

2.2 Compared Parameters

Parameter	Planned	Actual	Parameter	Planned	Actual
Instrument	ACIS	ACIS	Obspar format version number	7	7
Detector	ACIS-012367	ACIS-012367	Obspar file type	PREDICTED	ACTUAL
Grating	NONE	NONE	Obspar update status	NONE	UPDATED
Data mode	FAINT	FAINT	CCD I0 on	Y	Y
Observation mode	POINTING	POINTING	CCD I1 on	Y	Y
[deg] Pointing RA	22.354307	22.27528007579886	CCD I2 on	Y	Y
[deg] Pointing Dec	-73.520938	-73.53689712125014	CCD I3 on	Y	Y
[deg] Pointing Roll	185.050478	185.1833764644284	CCD S0 on	N	N
[mm] SIM focus pos	-0.782348	-0.7809083437167272	CCD S1 on	N	N
[mm] SIM defocus	0	0.001439871863259334	CCD S2 on	O1	Y
[mm] SIM translation stage pos	-233.592463	-233.5874344608287	CCD S3 on	Y	Y
[mm] SIM translation stage offset	0	-0.005018542100998502	CCD S4 on	N	N
[s] Observation start time (MET)	386900073.184000	386899014.21524	CCD S5 on	N	N
Observation start date	2010-04-06T00:13:27	2010-04-05T23:56:54	Number of optional ACIS chips dropped	0	0
[s] Observation end time (MET)	386933073.184000	386933765.81701	On-chip summing requested	N	N
Observation end date	2010-04-06T09:23:27	2010-04-06T09:36:05	Subarray requested	NONE	NONE
Read mode	TIMED	TIMED	Alternating exposures requested	N	N
			[s] Primary exposure time	0.000000	3.2

2.3 Aspect



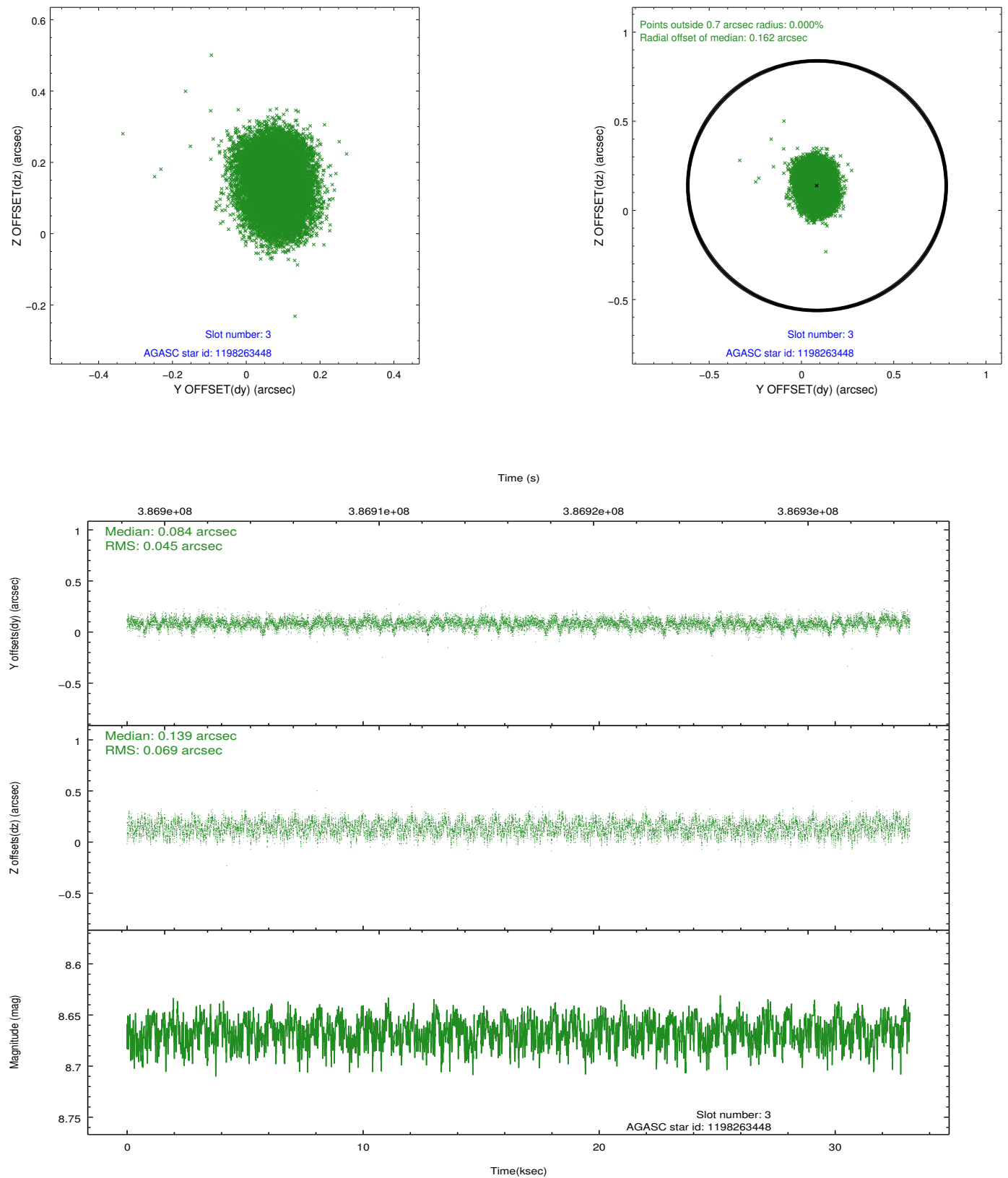


Slot Statistics

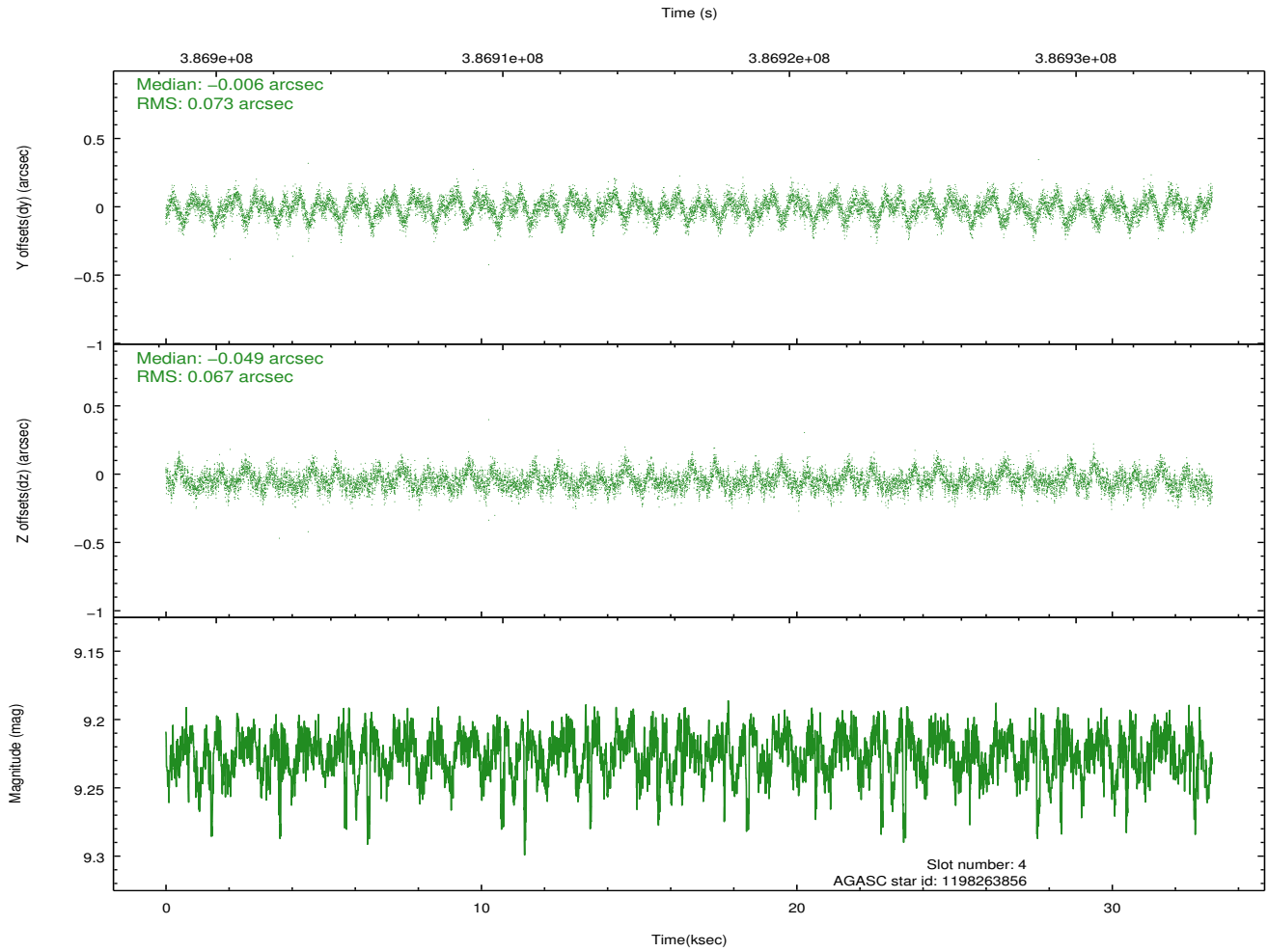
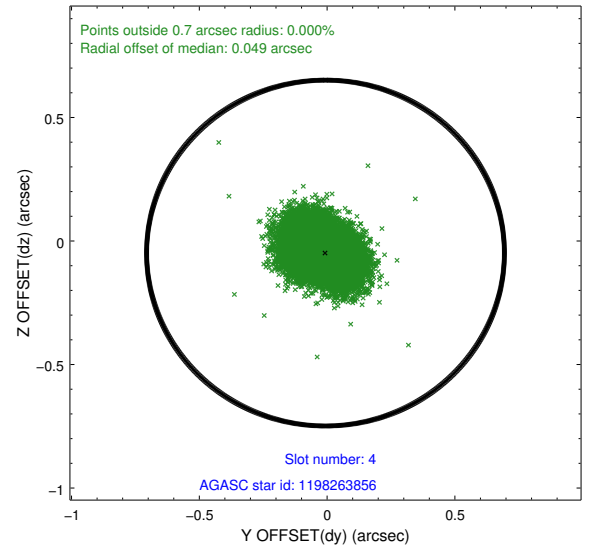
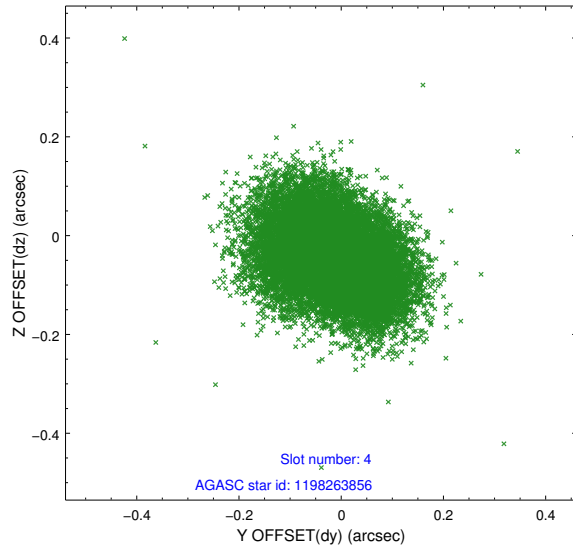
slot	status	id	mag	n_pts	med_dy	med_dz	dr1	dr2	ra	dec	mean_y	mean_z
0	FID	ACIS-I-1	7.02	8089	0.065	-0.042	0.026	0.060	0.000000	0.000000	925.32	-839.46
1	FID	ACIS-I-5	7.01	8092	-0.234	0.057	0.019	0.027	0.000000	0.000000	-1823.06	1058.09
2	FID	ACIS-I-6	7.02	8092	0.080	0.053	0.016	0.035	0.000000	0.000000	390.83	1702.65
3	GUIDE	1198263448	8.67	16176	0.084	0.139	0.089	0.141	23.988893	-72.831877	-1946.07	-2294.69
4	GUIDE	1198263856	9.23	16170	-0.006	-0.049	0.106	0.172	23.344483	-73.858921	-879.26	1307.29
5	GUIDE	1198264032	8.00	16182	0.083	-0.047	0.069	0.107	22.563131	-73.173817	-325.85	-1224.81
6	GUIDE	1198269920	8.27	16175	-0.016	0.110	0.096	0.151	20.316466	-73.033728	1981.10	-1898.97
7	GUIDE	1198272400	9.16	16079	-0.142	-0.153	0.087	0.141	20.411923	-73.620598	1998.54	215.85

2.4 Star Slots

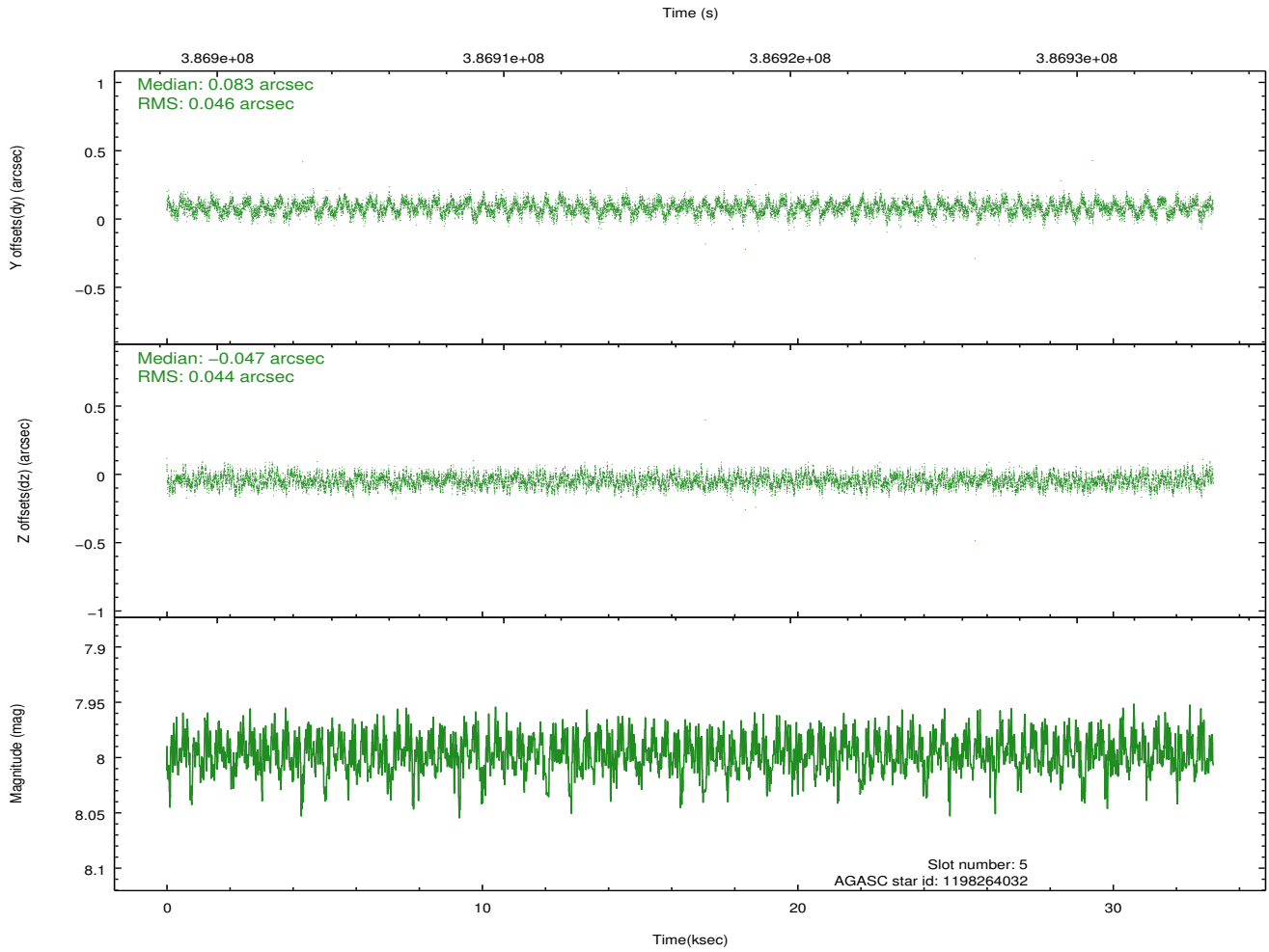
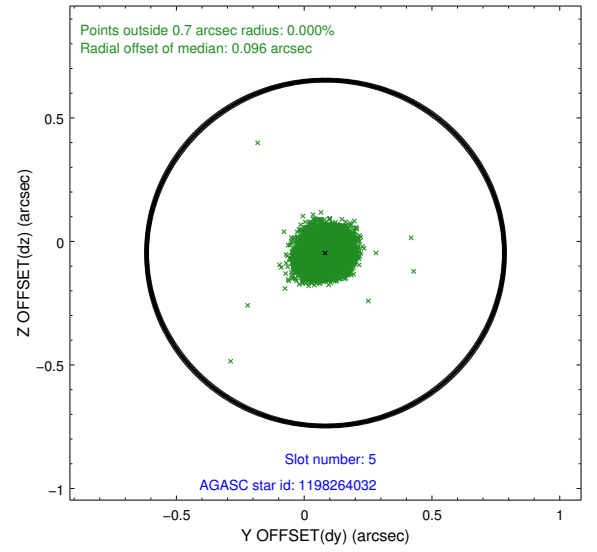
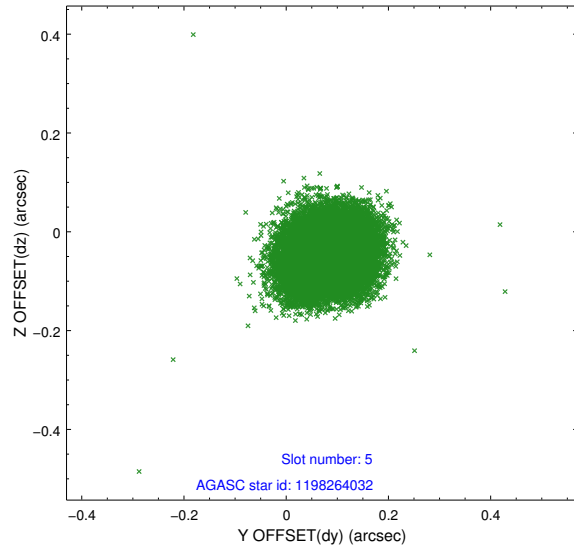
2.4.1 Slot 3



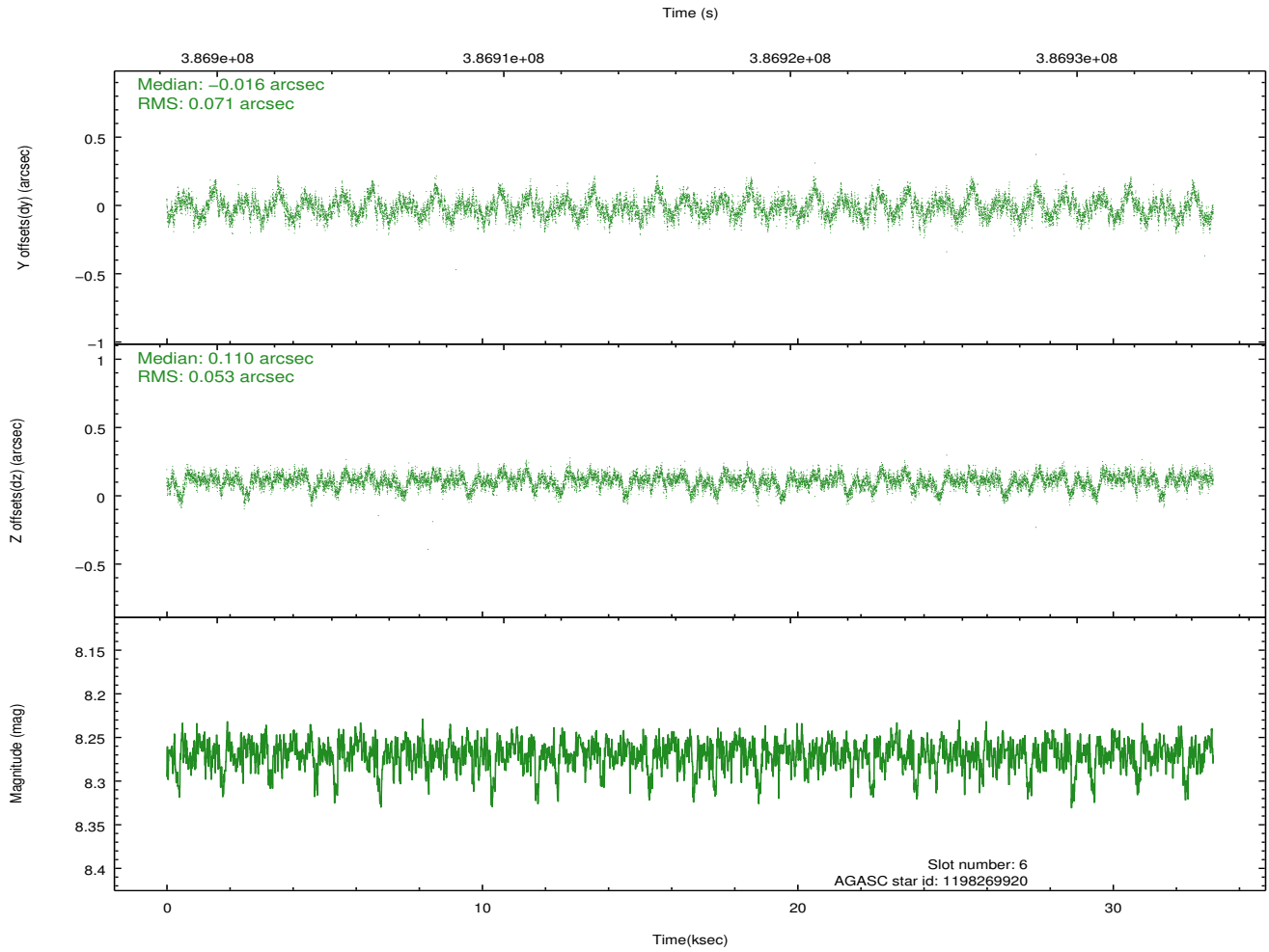
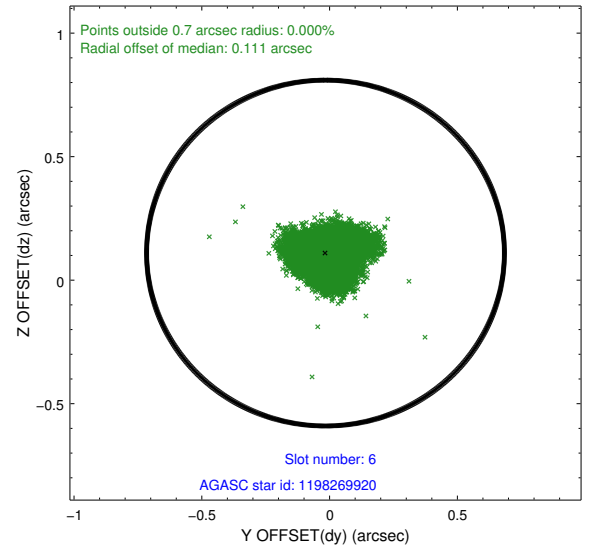
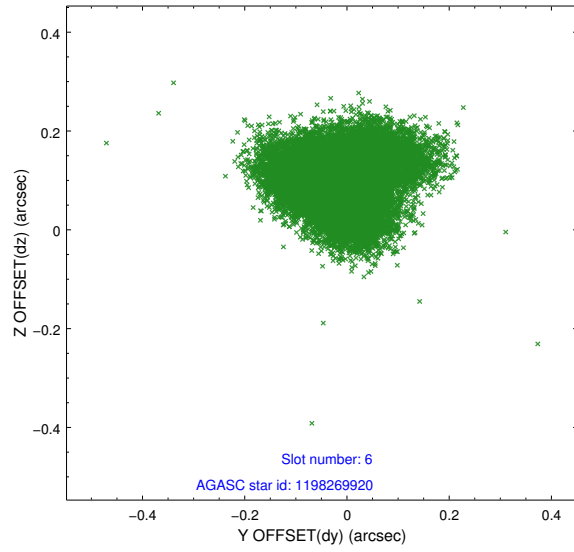
2.4.2 Slot 4



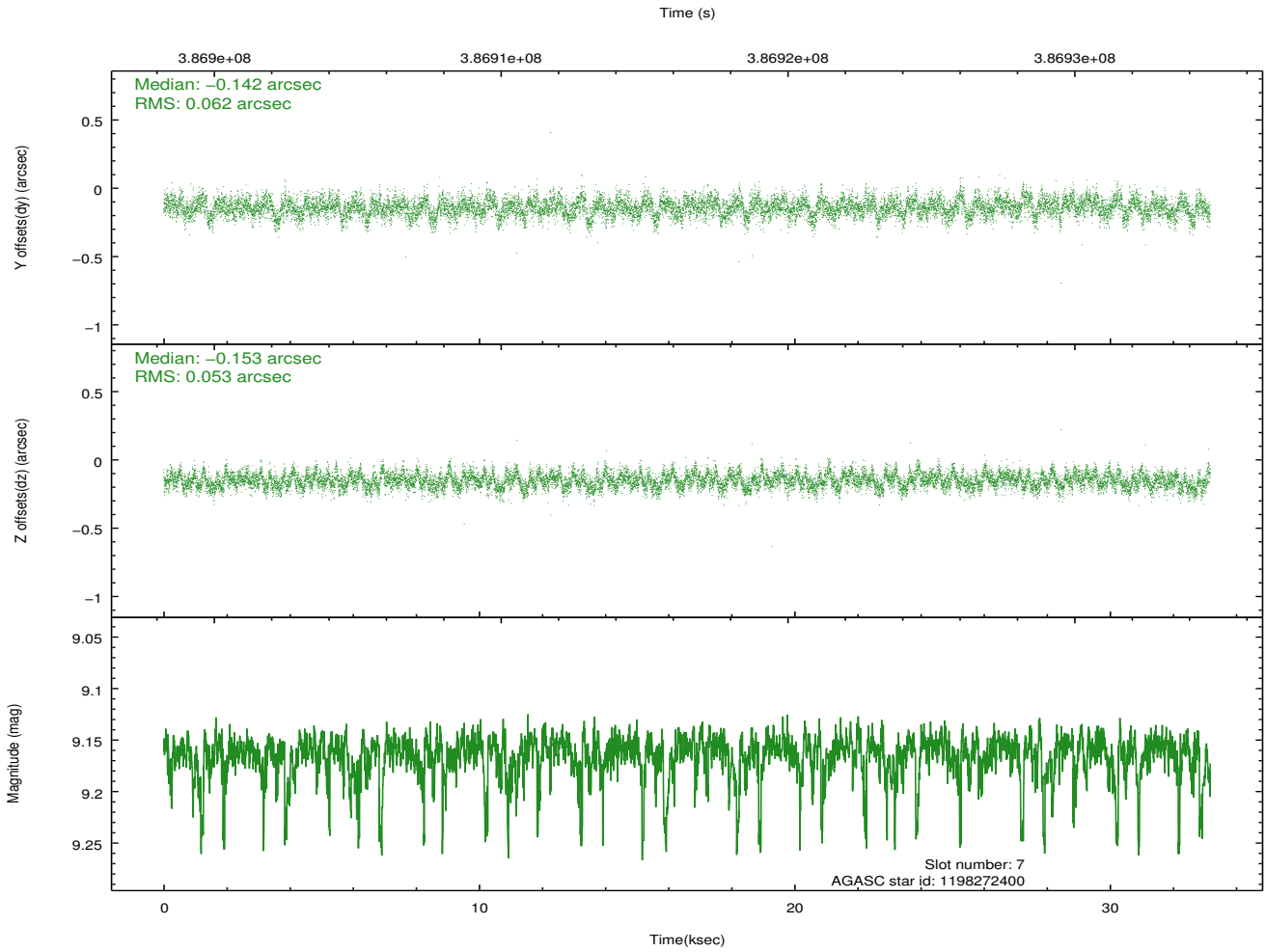
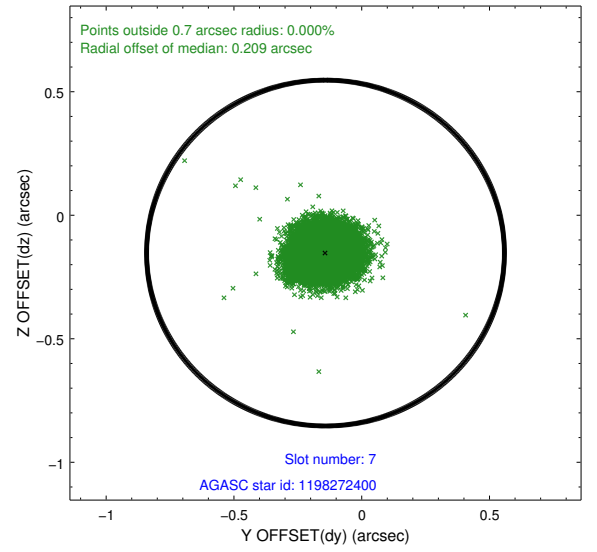
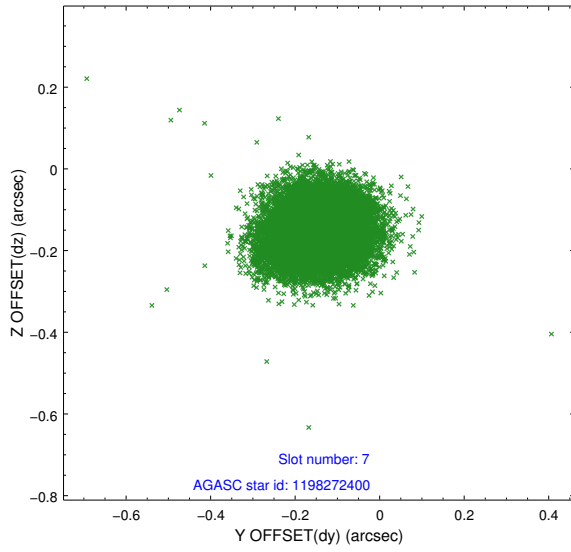
2.4.3 Slot 5



2.4.4 Slot 6

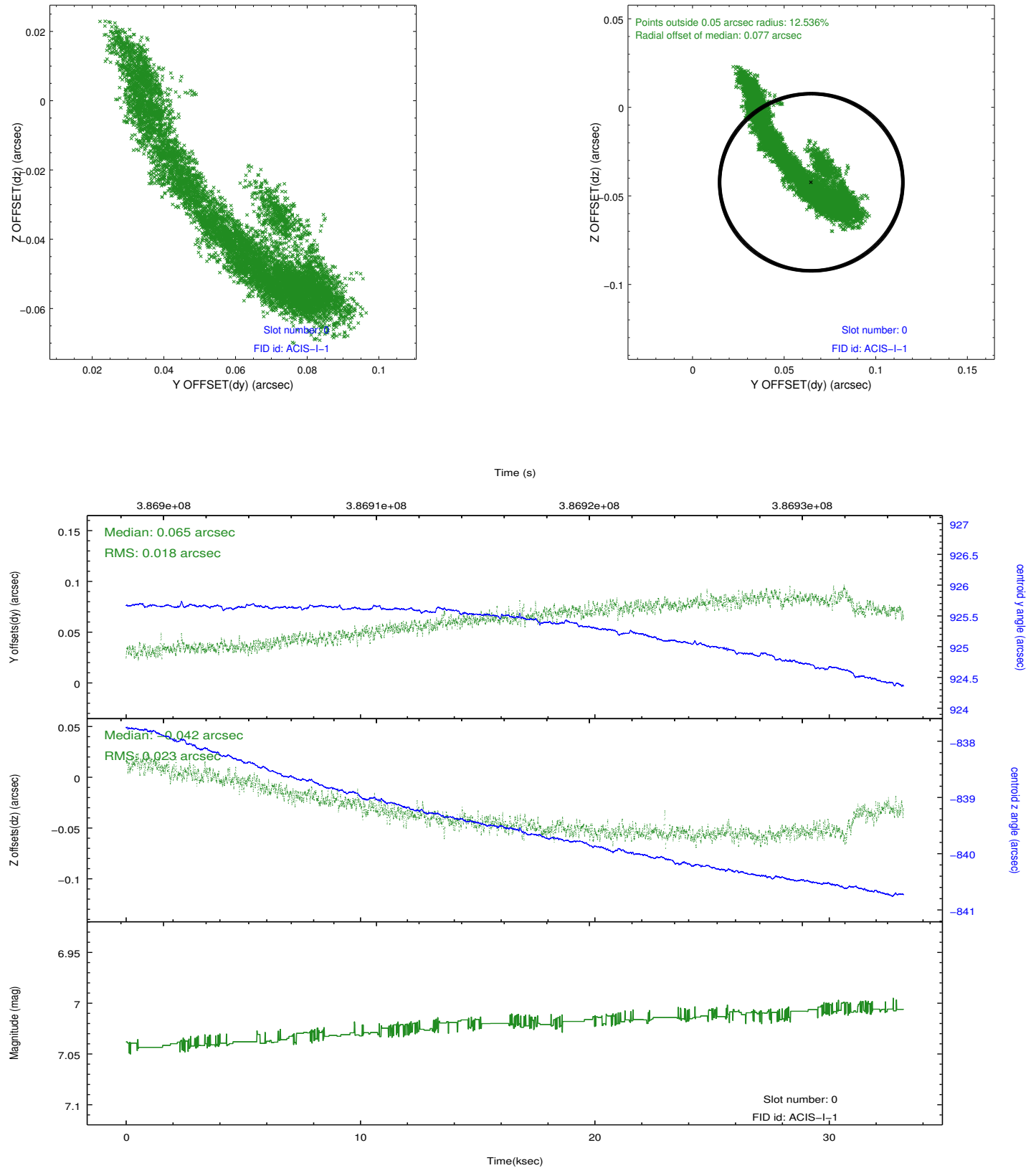


2.4.5 Slot 7

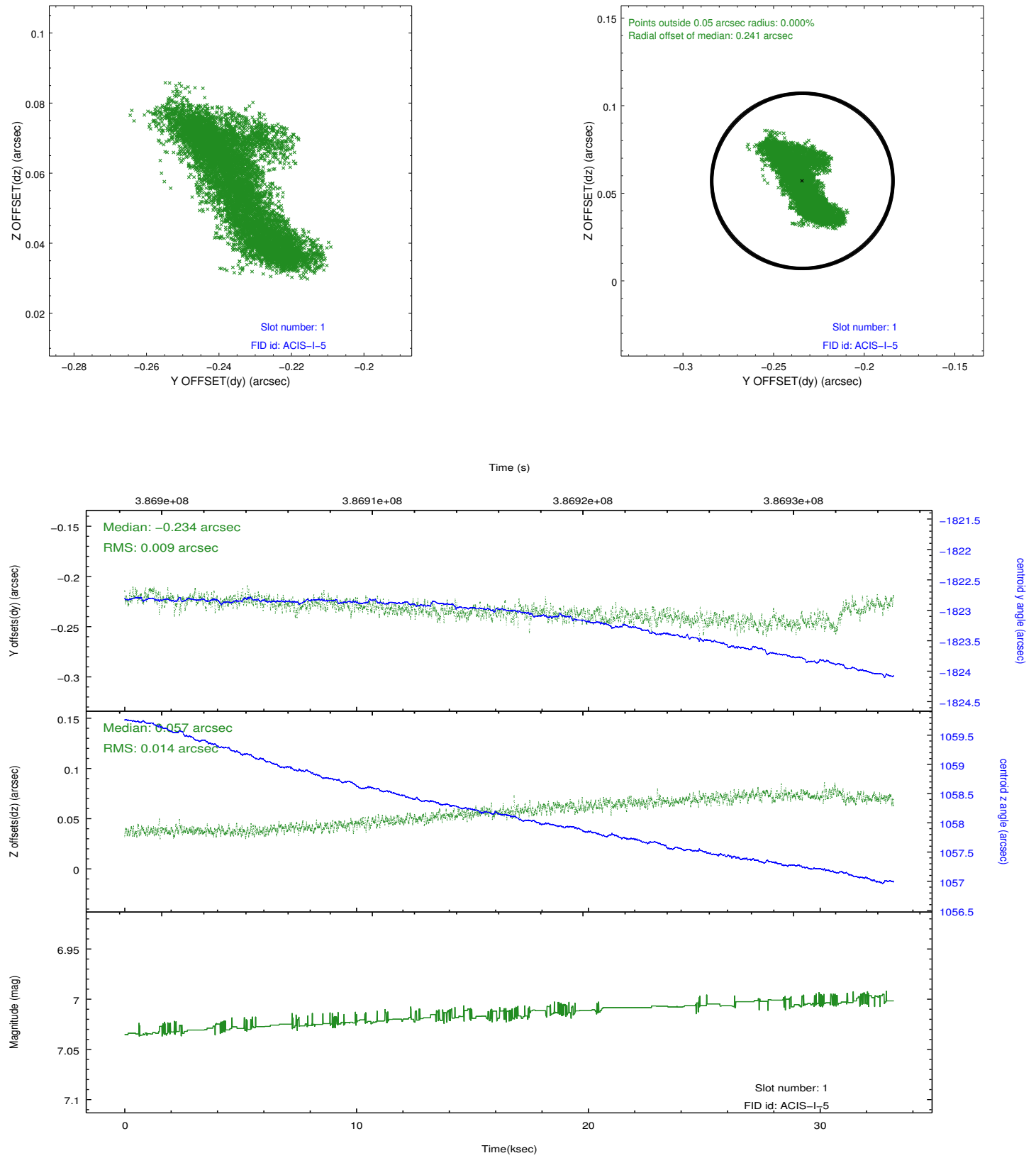


2.5 FID Slots

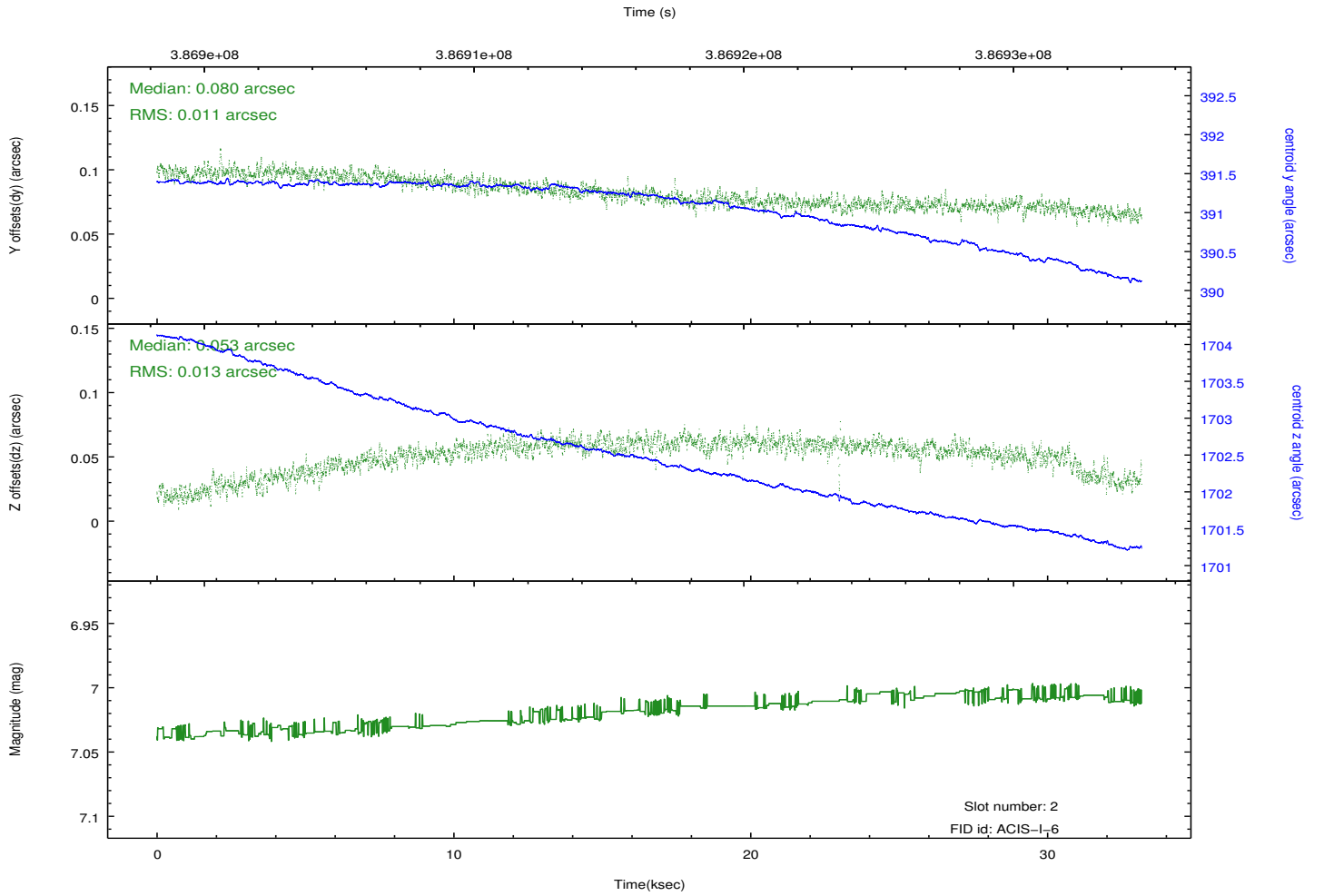
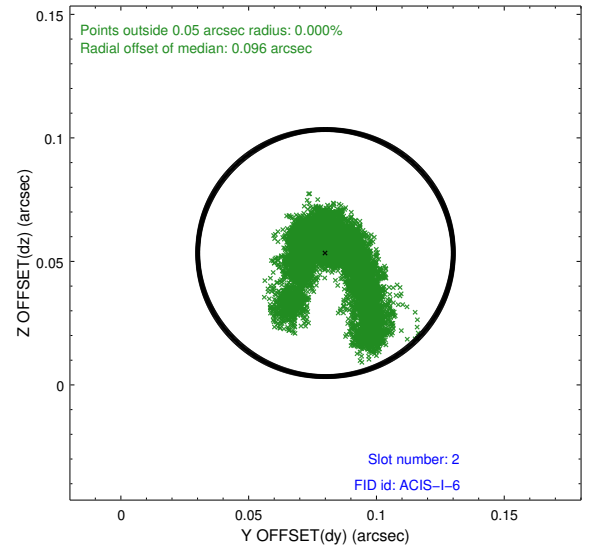
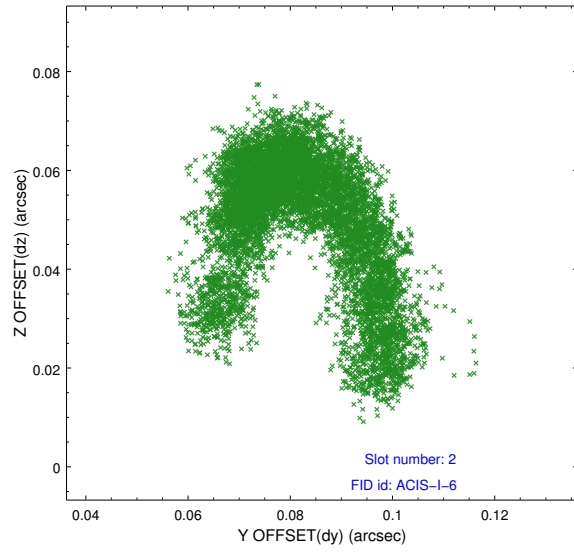
2.5.1 Slot 0



2.5.2 Slot 1



2.5.3 Slot 2



A Summary

A.1 Status

V&V Scientist	Beth Sundheim
V&V Date (YYYY-MM-DD)	2012.06.29
V&V Edition	1
V&V Disposition and Status	OK
V&V Charge Time	33.153805236757

A.2 Comments