

# V&V Reference Report

## L2 ASCDS Version : 8.4.5

Observation 11022 - L2 Version 2  
Chandra X-Ray Center

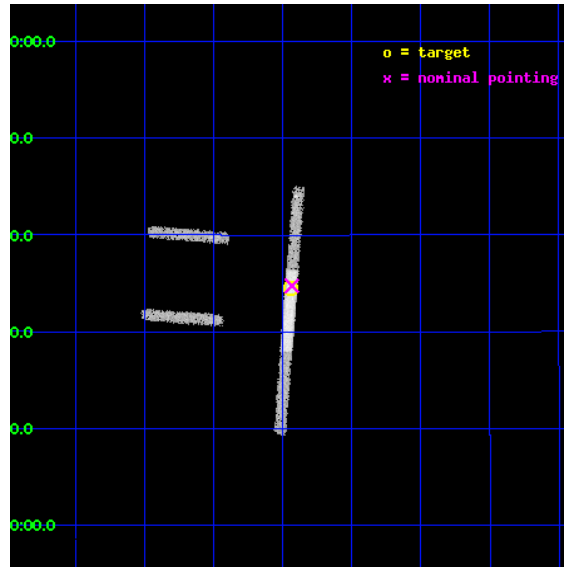
L2 Processing Date : Jun 22 2012

## Contents

<b>1</b>	<b>Front</b>	<b>2</b>
<b>2</b>	<b>OBI</b>	<b>3</b>
2.1	OBI . . . . .	3
2.1.1	Images . . . . .	3
2.1.2	Bias . . . . .	3
2.1.3	Parameters . . . . .	4
2.1.4	Events . . . . .	4
2.2	Compared Parameters . . . . .	5
2.3	Aspect . . . . .	6
2.4	Star Slots . . . . .	9
2.4.1	Slot 3 . . . . .	9
2.4.2	Slot 4 . . . . .	10
2.4.3	Slot 5 . . . . .	11
2.4.4	Slot 6 . . . . .	12
2.4.5	Slot 7 . . . . .	13
2.5	FID Slots . . . . .	14
2.5.1	Slot 0 . . . . .	14
2.5.2	Slot 1 . . . . .	15
2.5.3	Slot 2 . . . . .	16
<b>A</b>	<b>Summary</b>	<b>17</b>
A.1	Status . . . . .	17
A.2	Comments . . . . .	17

# 1 Front

seq_num	200651	Sequence number
obs_id	11022	Observation id
title	SLEUTHING THE MAGNETIC DYNAMO IN METAL-POOR STARS	Proposal title
observer	Dr. Andrea Dupree	Principal investigator
object	HD 119516	Source name
dtcycle	0	&#160
cycle	P	events from which exps? Prim/Second/Both
ra_targ	205.86125	Observer's specified target RA [deg]
dec_targ	15.575278	Observer's specified target Dec [deg]
ra_nom	205.85824556584	Nominal RA [deg]
dec_nom	15.579166263221	Nominal Dec [deg]
roll_nom	94.442720444168	Nominal Roll [deg]
revision	2	Processing version of data
ontime	15063.828575373	Sum of GTIs [s]
livetime	14229.569257747	Livetime [s]
ontime2	15063.664415359	Sum of GTIs [s]
ontime3	15063.746495366	Sum of GTIs [s]
ontime6	15063.787535369	Sum of GTIs [s]
ontime7	15063.828575373	Sum of GTIs [s]
ontime8	15063.705455363	Sum of GTIs [s]
l2events	16645	Number of level 2 events

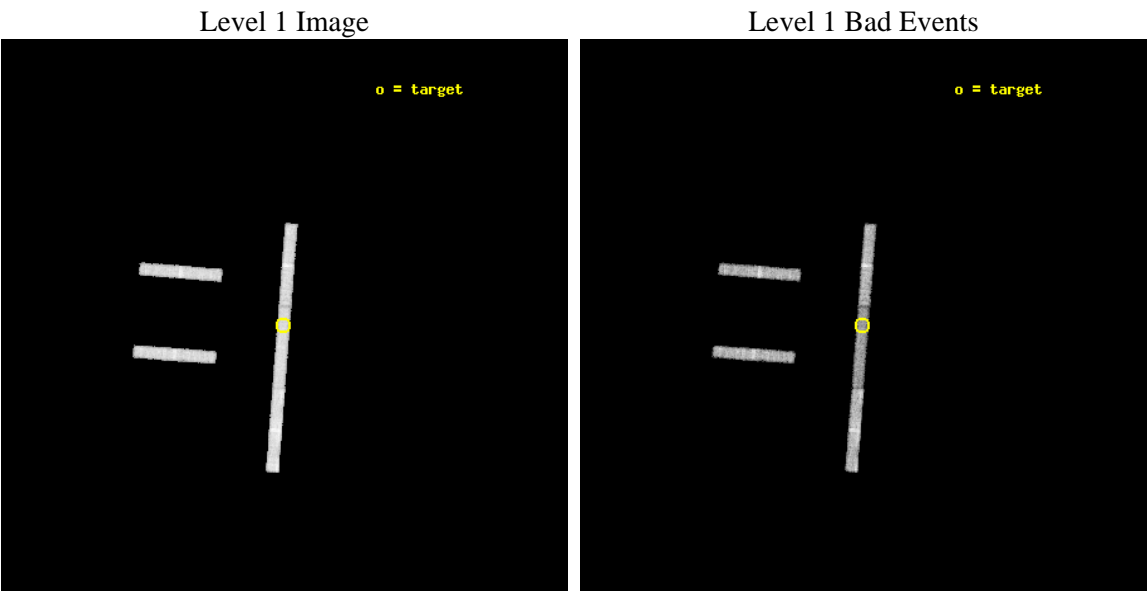




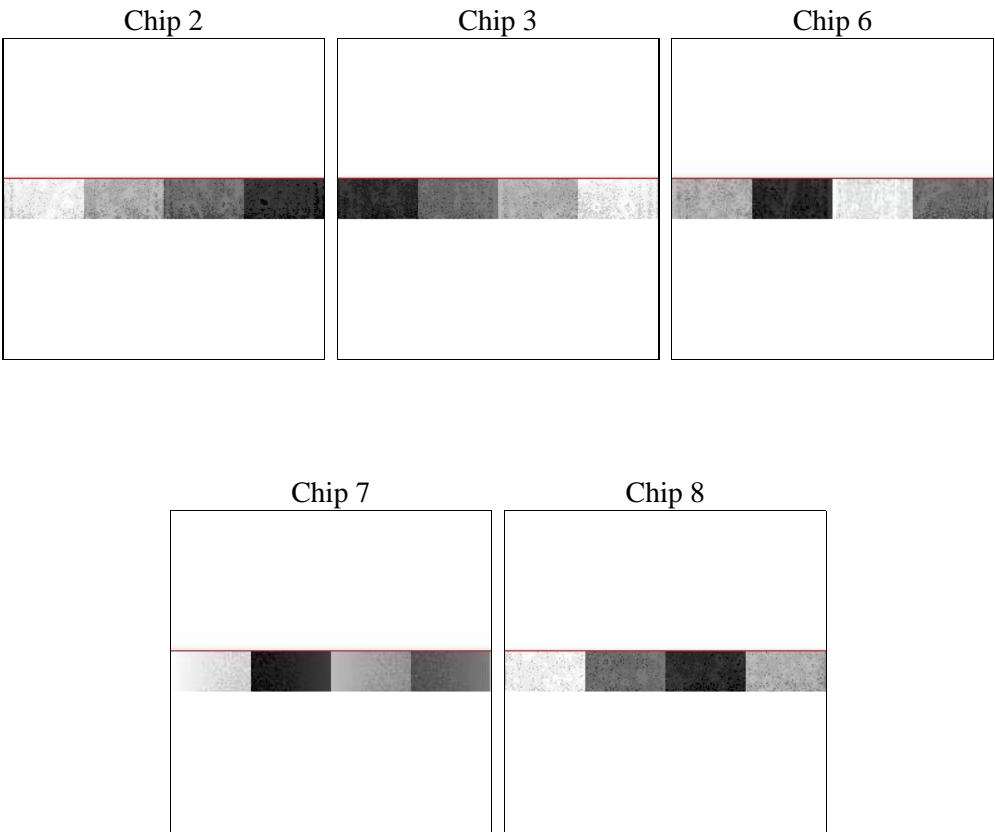
# 2 OBI

## 2.1 OBI

### 2.1.1 Images



### 2.1.2 Bias



Chip 7



Chip 8



### 2.1.3 Parameters

obi_num	0	Obi number	sched_exp_time	15000.000000	[s] Scheduled observation exposure time
ascdsver	8.4.5	Processing system revision	ontime	15063.828575373	Sum of GTIs [s]
caldsver	4.4.10	&#160	ontime2	15063.664415359	Sum of GTIs [s]
date	2012-06-22T03:28:29	Date and time of file creation	ontime3	15063.746495366	Sum of GTIs [s]
revision	2	Processing version of data	ontime6	15063.787535369	Sum of GTIs [s]
			ontime7	15063.828575373	Sum of GTIs [s]
			ontime8	15063.705455363	Sum of GTIs [s]
			l1events	110983	Number of level 1 events

### 2.1.4 Events

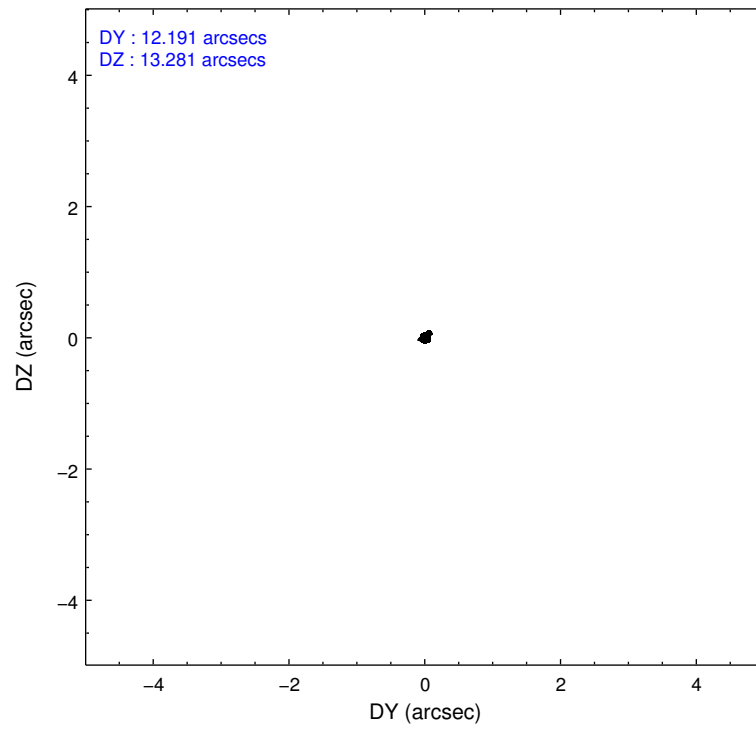
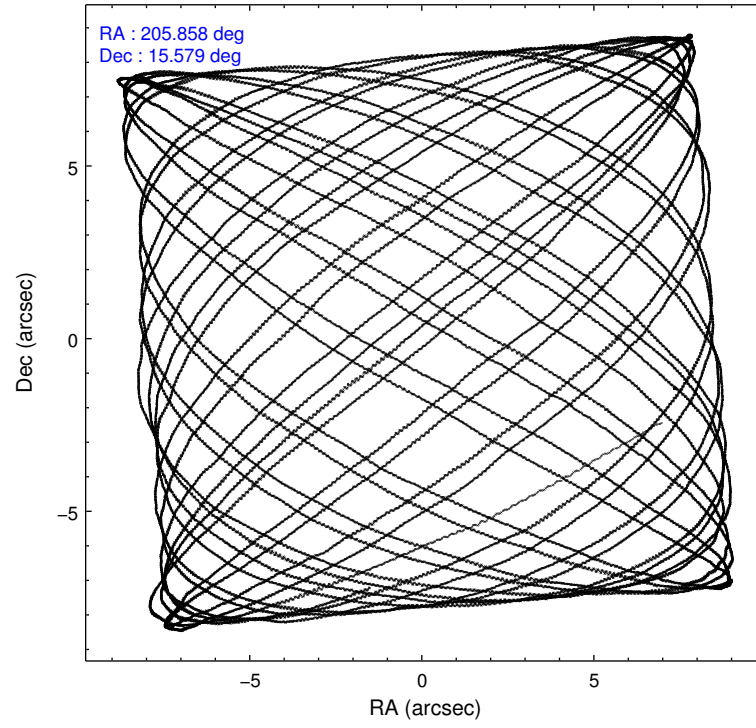
	ccd 2	ccd 3	ccd 6	ccd 7	ccd 8
level 1 events	20148	20083	20930	20700	29122
rejected events	17892	18095	18635	10787	22761
rejected %	88%	90%	89%	52%	78%

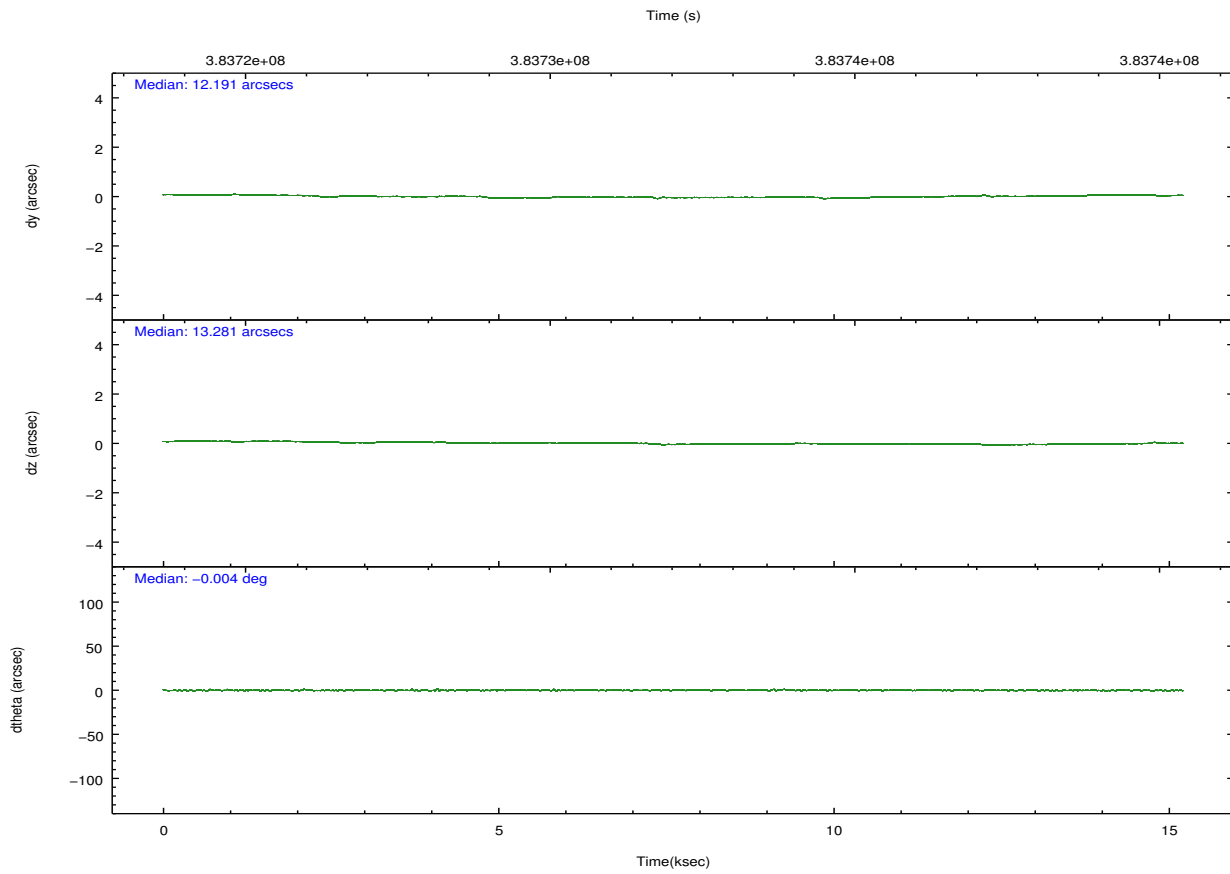
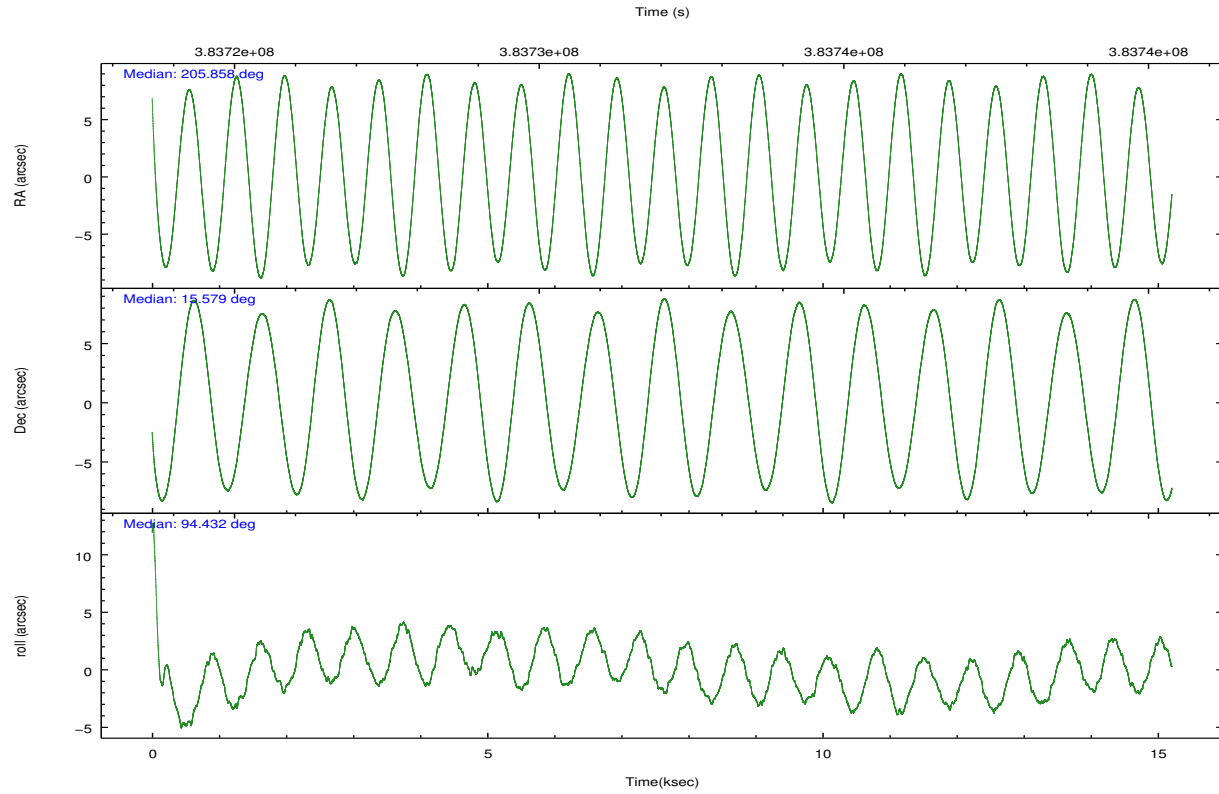
	ccd 2	ccd 3	ccd 6	ccd 7	ccd 8
grade 0 events	737	574	715	1016	1618
	3%	2%	3%	4%	5%
grade 1 events	8	7	3	15	8
	0%	0%	0%	0%	0%
grade 2 events	411	354	405	2122	1353
	2%	1%	1%	10%	4%
grade 3 events	353	356	390	1138	769
	1%	1%	1%	5%	2%
grade 4 events	391	369	382	1124	755
	1%	1%	1%	5%	2%
grade 5 events	532	671	751	2081	1056
	2%	3%	3%	10%	3%
grade 6 events	364	335	403	4513	1866
	1%	1%	1%	21%	6%
grade 7 events	17352	17417	17881	8691	21697
	86%	86%	85%	41%	74%

## 2.2 Compared Parameters

Parameter	Planned	Actual	Parameter	Planned	Actual
Instrument	ACIS	ACIS	Obspar format version number	7	7
Detector	ACIS-23678	ACIS-23678	Obspar file type	PREDICTED	ACTUAL
Grating	NONE	NONE	Obspar update status	NONE	UPDATED
Data mode	VFAINT	VFAINT	CCD I0 on	N	N
Observation mode	POINTING	POINTING	CCD I1 on	N	N
[deg] Pointing RA	205.874657	205.858245565844	CCD I2 on	O1	Y
[deg] Pointing Dec	15.556854	15.57916626322121	CCD I3 on	O2	Y
[deg] Pointing Roll	94.281671	94.44272044416807	CCD S0 on	N	N
[mm] SIM focus pos	-0.684267	-0.6828225247311905	CCD S1 on	N	N
[mm] SIM defocus	0	0.001444936568705701	CCD S2 on	O3	Y
[mm] SIM translation stage pos	-190.132523	-190.1400660498719	CCD S3 on	Y	Y
[mm] SIM translation stage offset	0	0.00754346686406393	CCD S4 on	O4	Y
[s] Observation start time (MET)	383724618.184000	383723884.87906	CCD S5 on	N	N
Observation start date	2010-02-28T06:09:12	2010-02-28T05:58:04	Number of optional ACIS chips dropped	0	0
[s] Observation end time (MET)	383739618.184000	383740903.97993	On-chip summing requested	N	N
Observation end date	2010-02-28T10:19:12	2010-02-28T10:41:43	Subarray requested	CUSTOM	1/8
Read mode	TIMED	TIMED	Subarray start row	449	449
			Subarray row count	128	128
			Alternating exposures requested	N	N
			[s] Primary exposure time	0.000000	0.7

## 2.3 Aspect



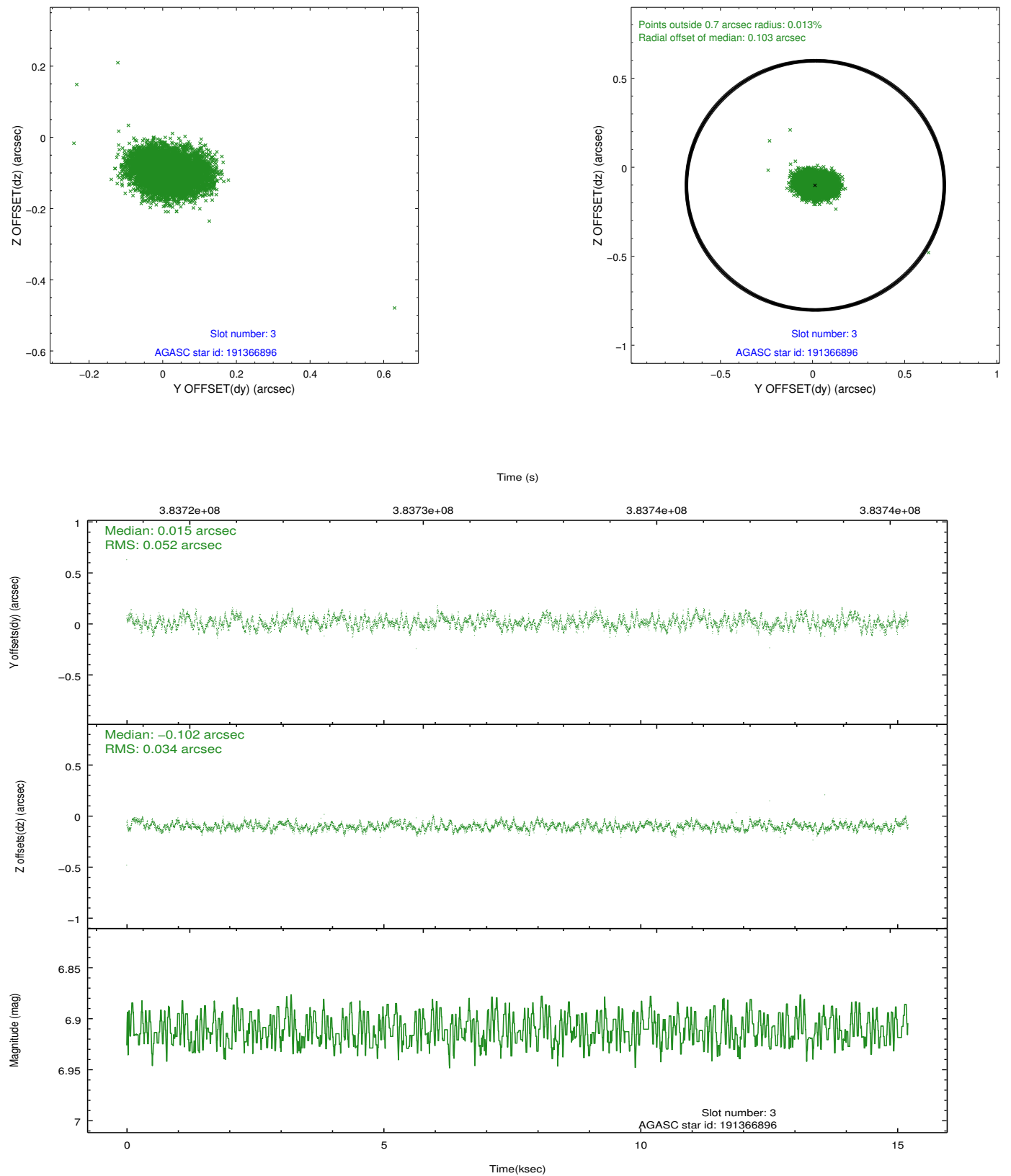


### Slot Statistics

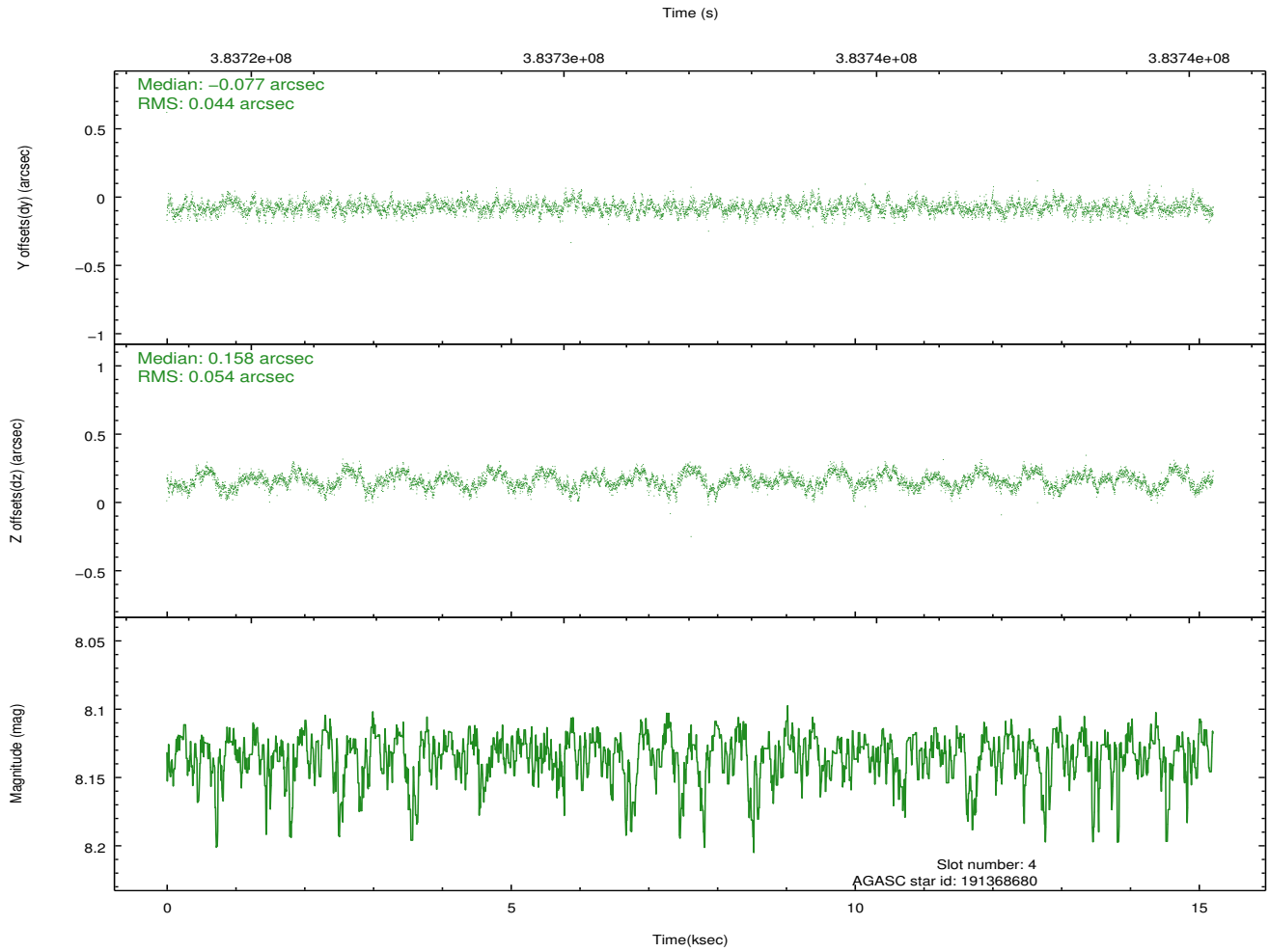
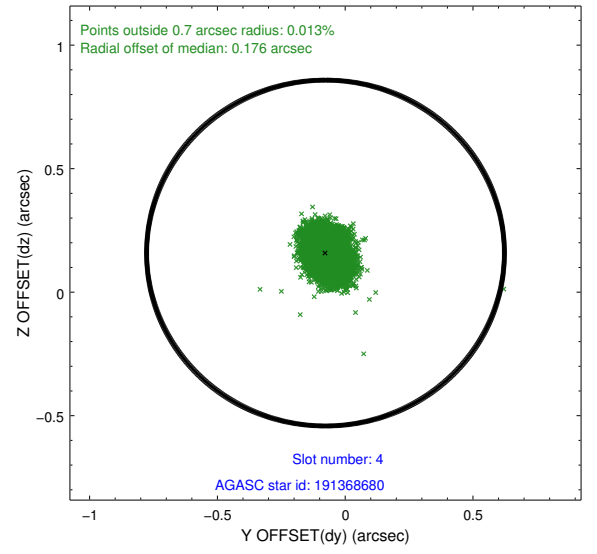
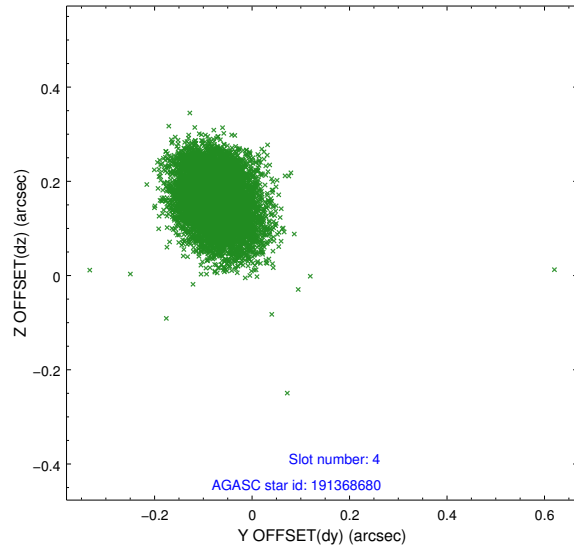
slot	status	id	mag	n_pts	med_dy	med_dz	dr1	dr2	ra	dec	mean_y	mean_z
0	FID	ACIS-S-2	6.97	3710	-0.029	-0.064	0.007	0.011	0.000000	0.000000	-765.12	-1734.68
1	FID	ACIS-S-4	7.05	3710	0.153	0.031	0.006	0.011	0.000000	0.000000	2148.21	173.58
2	FID	ACIS-S-5	7.09	3710	-0.155	0.041	0.007	0.011	0.000000	0.000000	-1817.70	167.61
3	GUIDE	191366896	6.91	7418	0.015	-0.102	0.065	0.107	205.636505	15.147031	-1408.98	934.89
4	GUIDE	191368680	8.13	7417	-0.077	0.158	0.074	0.119	206.414000	15.959211	1307.96	-1969.37
5	GUIDE	191371296	9.58	7412	0.288	-0.110	0.119	0.186	205.732432	15.496438	-179.16	508.53
6	GUIDE	191371328	8.78	7413	-0.220	0.171	0.068	0.112	206.310477	16.090405	1804.91	-1646.24
7	GUIDE	191372808	9.10	3707	-0.018	-0.239	0.098	0.159	205.861352	15.575294	70.39	40.96

## 2.4 Star Slots

### 2.4.1 Slot 3

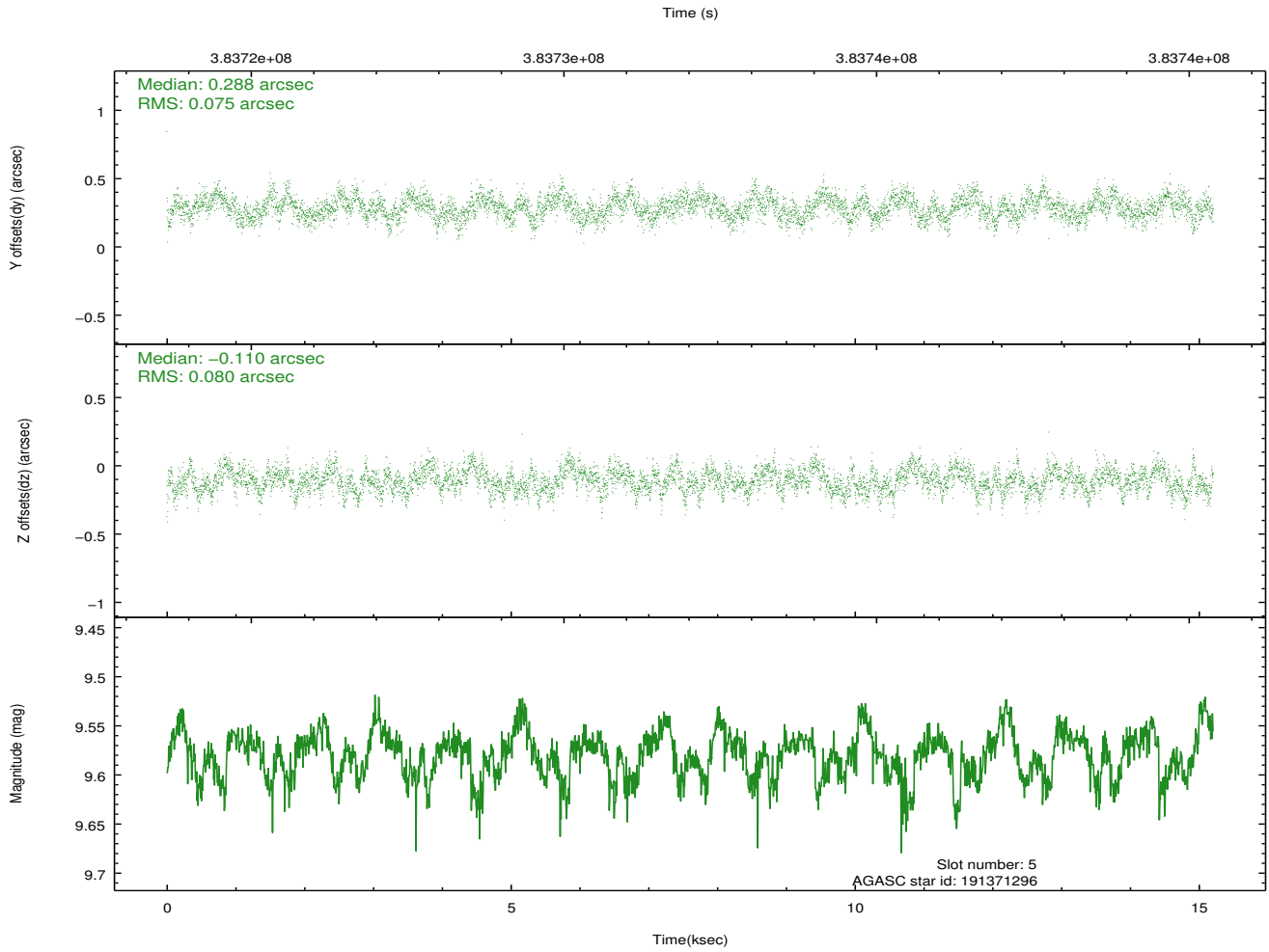
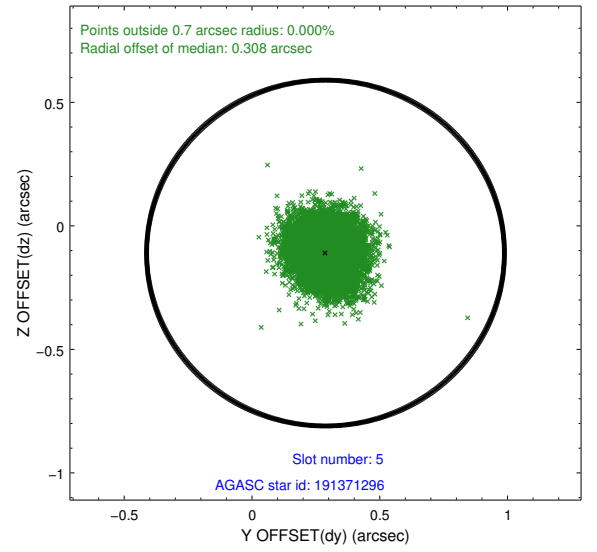
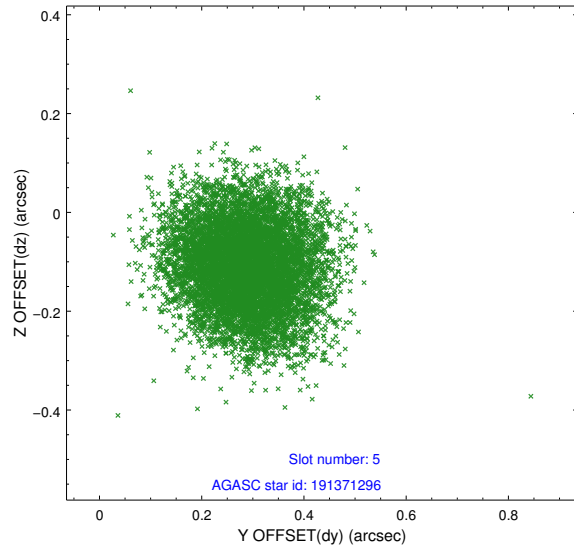


## 2.4.2 Slot 4

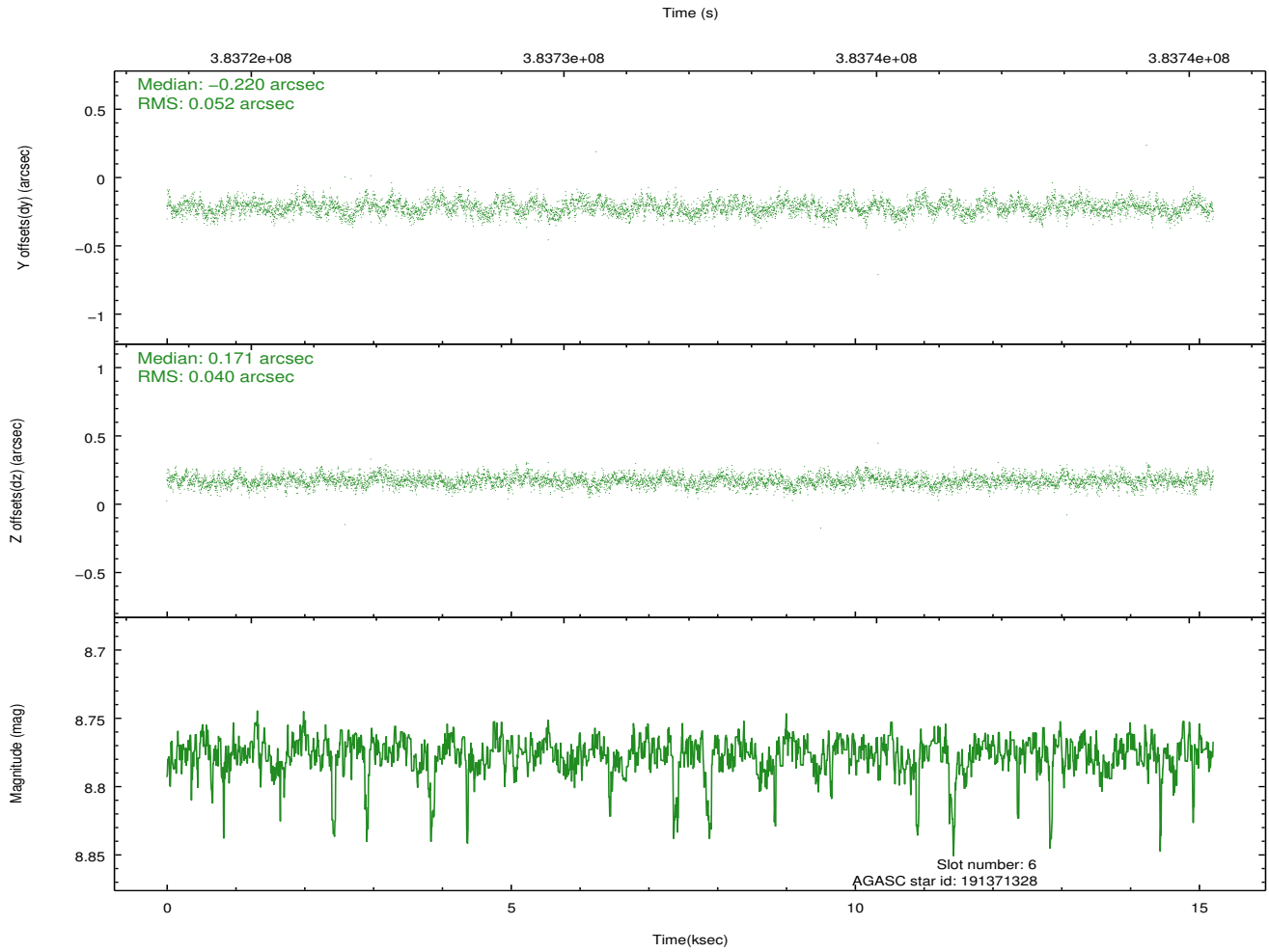
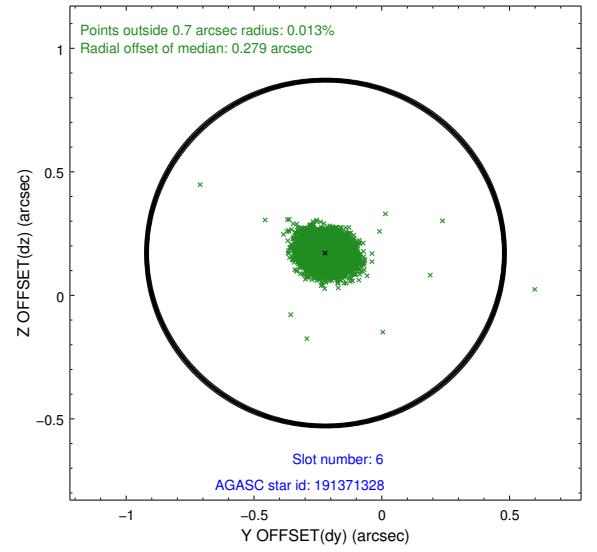
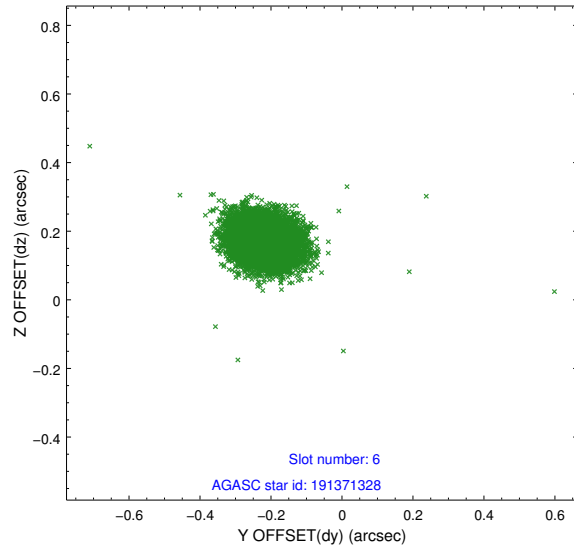




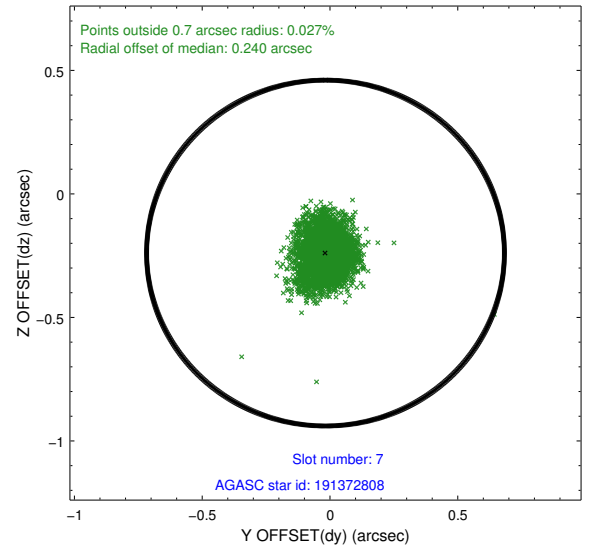
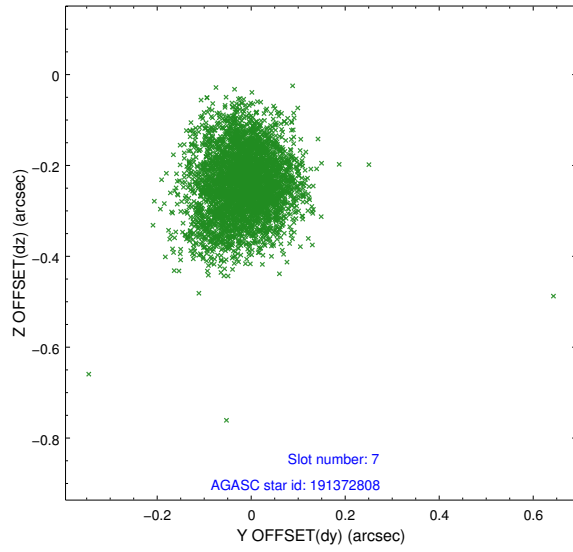
### 2.4.3 Slot 5



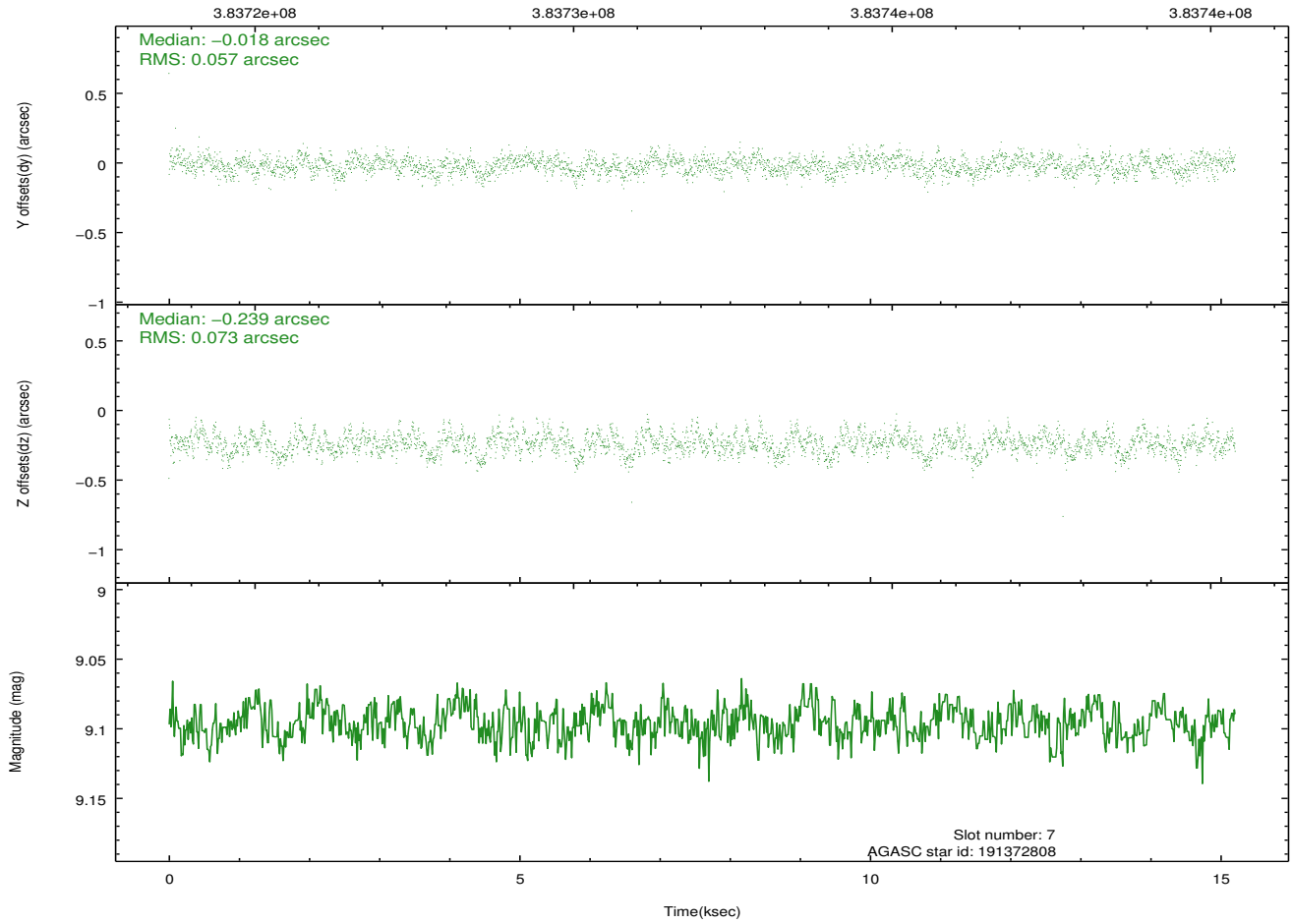
## 2.4.4 Slot 6



## 2.4.5 Slot 7

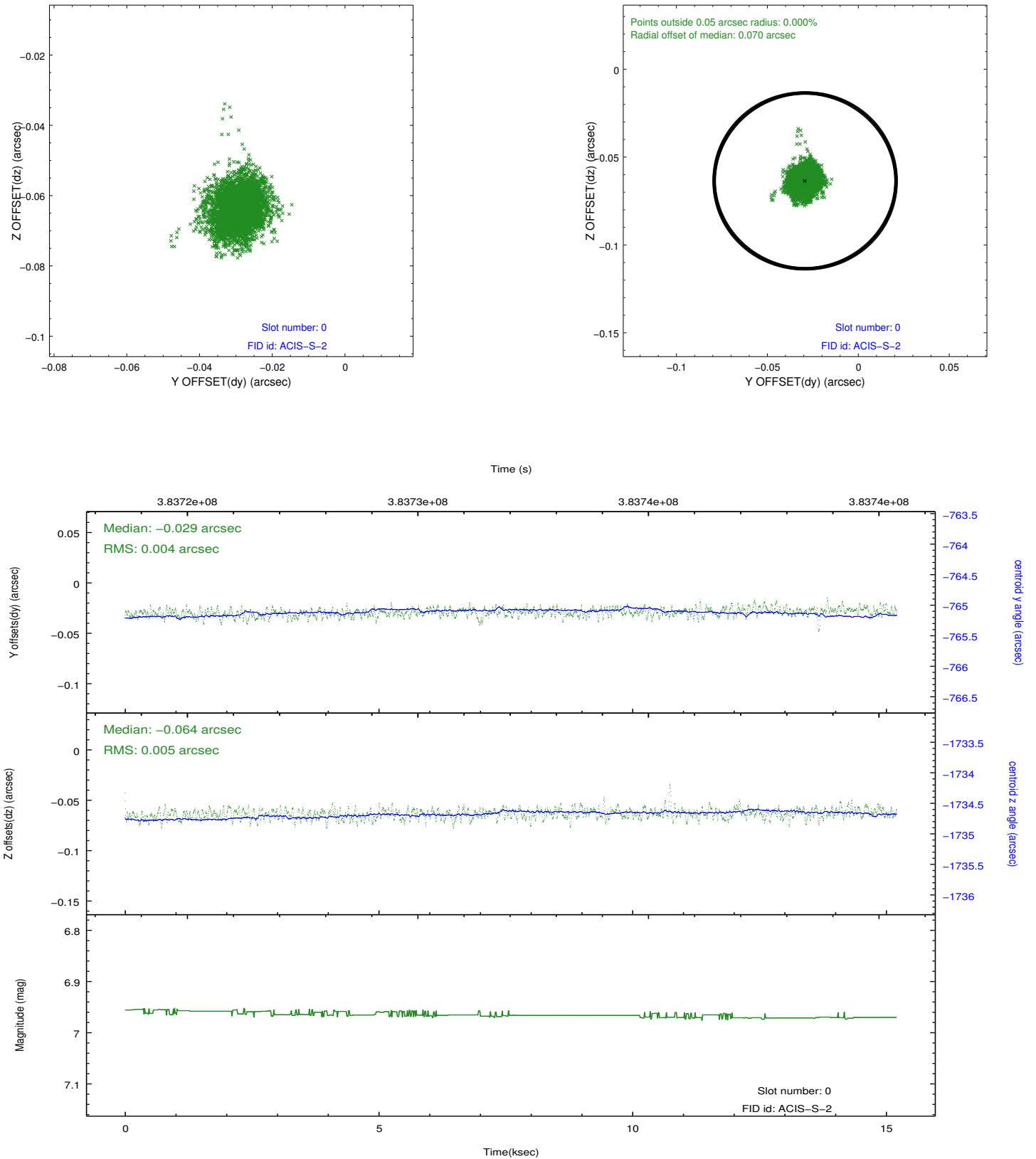


Time (s)

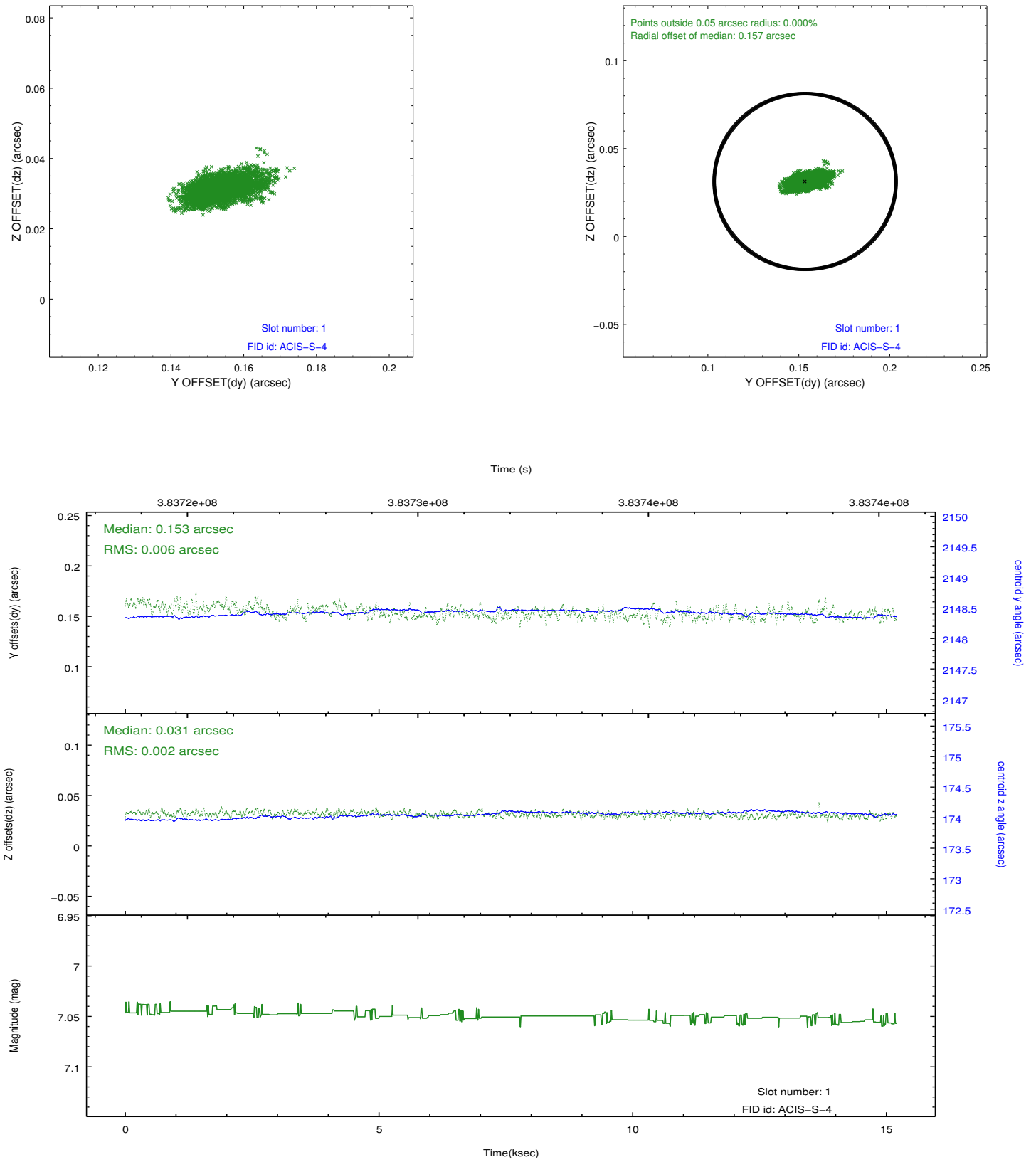


## 2.5 FID Slots

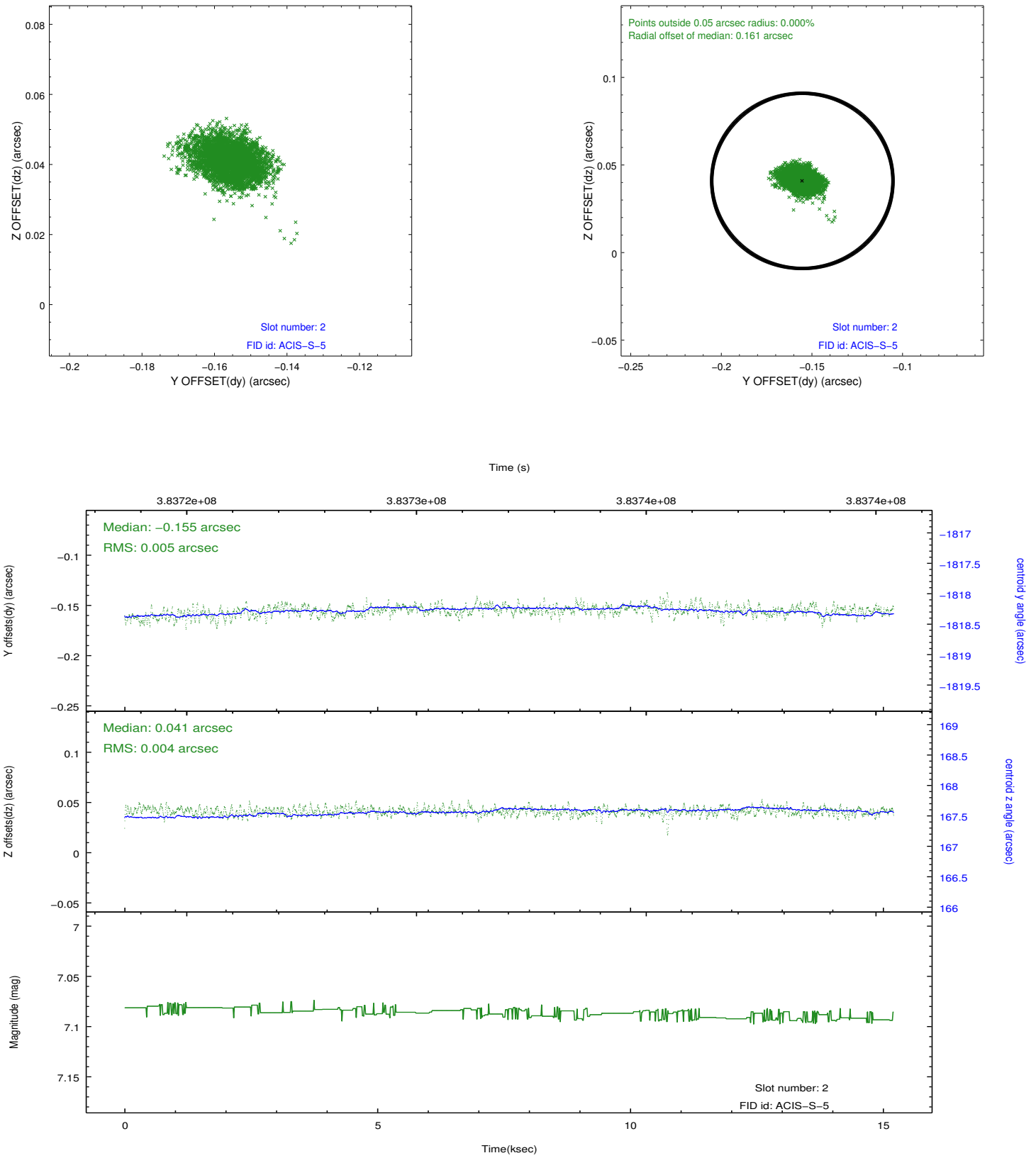
### 2.5.1 Slot 0



## 2.5.2 Slot 1



### 2.5.3 Slot 2



## A Summary

### A.1 Status

V&V Scientist	Jen Lauer
V&V Date (YYYY-MM-DD)	2012.06.28
V&V Edition	1
V&V Disposition and Status	OK
V&V Charge Time	15.06382857734

### A.2 Comments

Photometry of target in guide star slot 7.