

# V&V Reference Report

## L2 ASCDS Version : 8.4.5

Observation 11019 - L2 Version 2  
Chandra X-Ray Center

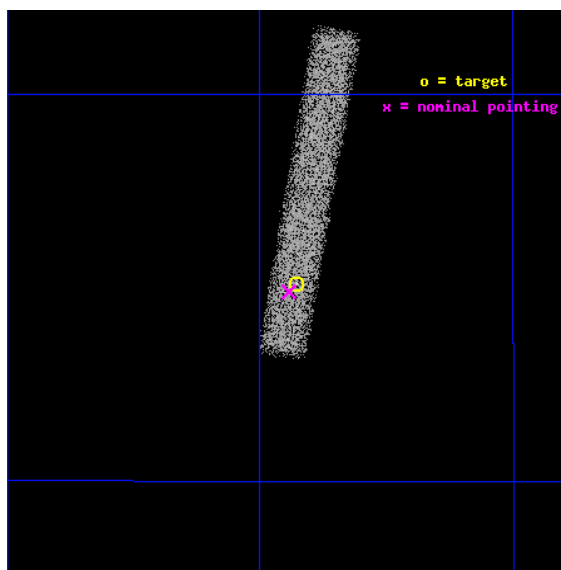
L2 Processing Date : Jun 22 2012

## Contents

<b>1</b>	<b>Front</b>	<b>2</b>
<b>2</b>	<b>OBI</b>	<b>3</b>
2.1	OBI . . . . .	3
2.1.1	Images . . . . .	3
2.1.2	Bias . . . . .	3
2.1.3	Parameters . . . . .	4
2.1.4	Events . . . . .	4
2.2	Compared Parameters . . . . .	5
2.3	Aspect . . . . .	6
2.4	Star Slots . . . . .	9
2.4.1	Slot 3 . . . . .	9
2.4.2	Slot 4 . . . . .	10
2.4.3	Slot 5 . . . . .	11
2.4.4	Slot 6 . . . . .	12
2.4.5	Slot 7 . . . . .	13
2.5	FID Slots . . . . .	14
2.5.1	Slot 0 . . . . .	14
2.5.2	Slot 1 . . . . .	15
2.5.3	Slot 2 . . . . .	16
<b>A</b>	<b>Summary</b>	<b>17</b>
A.1	Status . . . . .	17
A.2	Comments . . . . .	17

# 1 Front

seq_num	200648	Sequence number
obs_id	11019	Observation id
title	ACIS IMAGING SPECTROSCOPY OF T TAURI STARS IN THE HST/COS CYCLE 17 LARGE PROJECT SAMPLE	Proposal title
observer	Dr. Alexander Brown	Principal investigator
object	DE Tau	Source name
dtcycle	0	&#160
cycle	P	events from which exps? Prim/Second/Both
ra_targ	65.482083	Observer's specified target RA [deg]
dec_targ	27.918389	Observer's specified target Dec [deg]
ra_nom	65.485737810487	Nominal RA [deg]
dec_nom	27.914765559272	Nominal Dec [deg]
roll_nom	279.89194062243	Nominal Roll [deg]
revision	2	Processing version of data
ontime	20175.198797464	Sum of GTIs [s]
livetime	18297.84037499	Livetime [s]
ontime7	20175.198797464	Sum of GTIs [s]
l2events	12859	Number of level 2 events

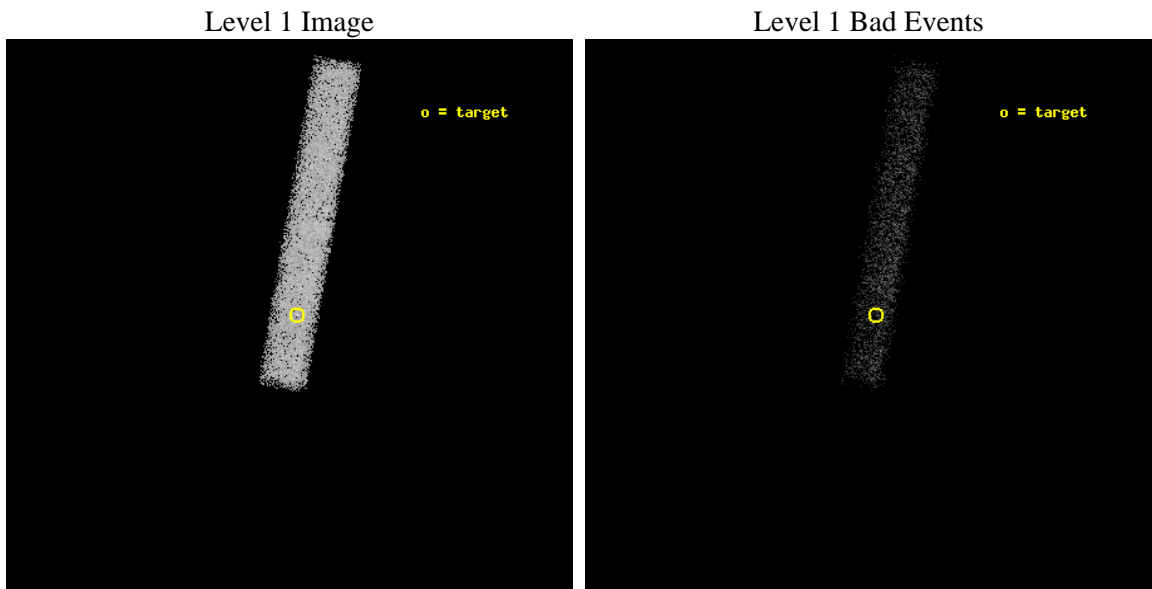




## 2 OBI

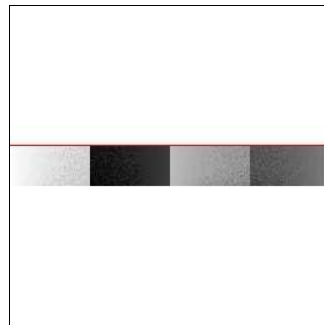
### 2.1 OBI

#### 2.1.1 Images



#### 2.1.2 Bias

Chip 7



### 2.1.3 Parameters

obi_num	0	Obi number	sched_exp_time	20000.000000	[s] Scheduled observation exposure time
ascdsver	8.4.5	Processing system revision	ontime	20175.198797464	Sum of GTIs [s]
caldsver	4.4.10	&#160	ontime7	20175.198797464	Sum of GTIs [s]
date	2012-06-22T03:41:27	Date and time of file creation	l1events	28293	Number of level 1 events
revision	2	Processing version of data			

### 2.1.4 Events

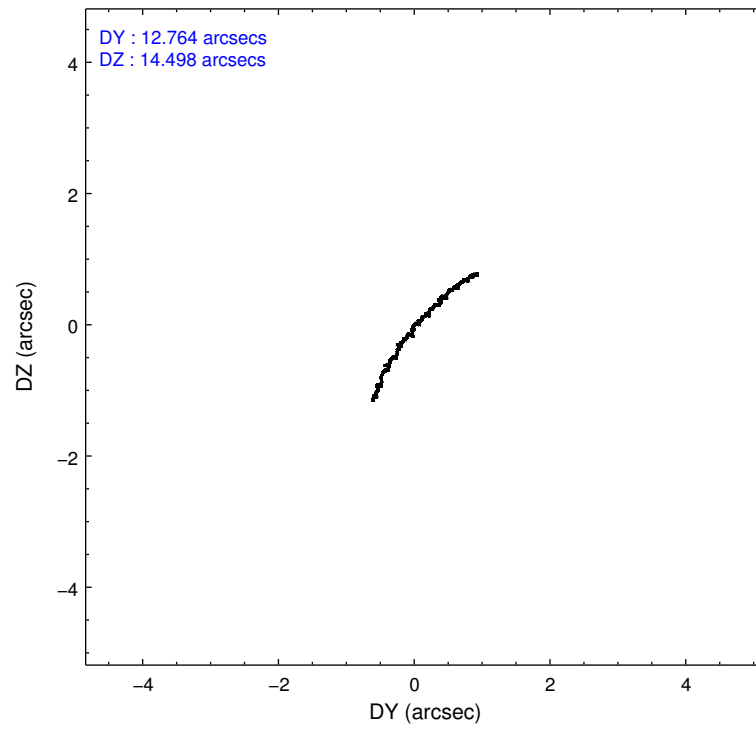
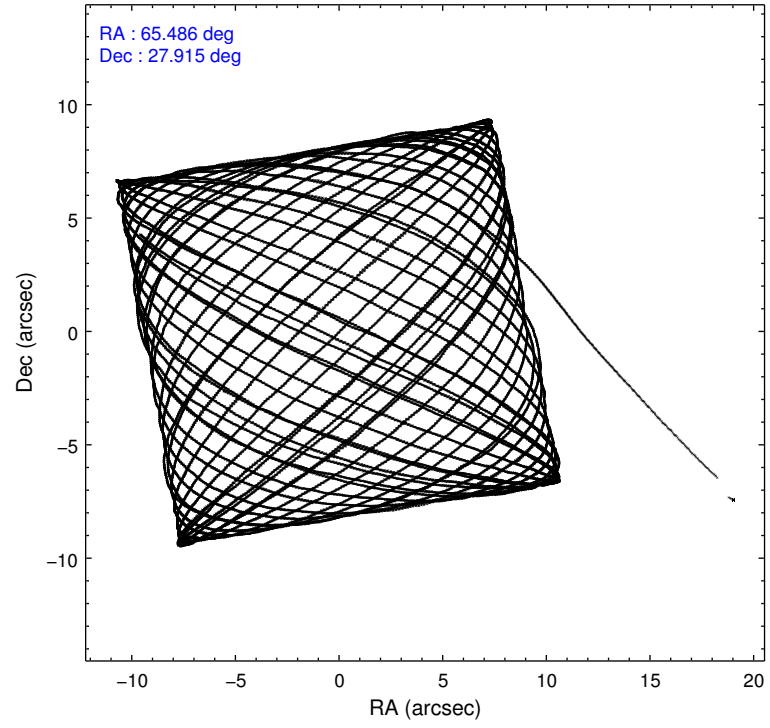
	<b>ccd 7</b>
level 1 events	28293
rejected events	14814
rejected %	52%

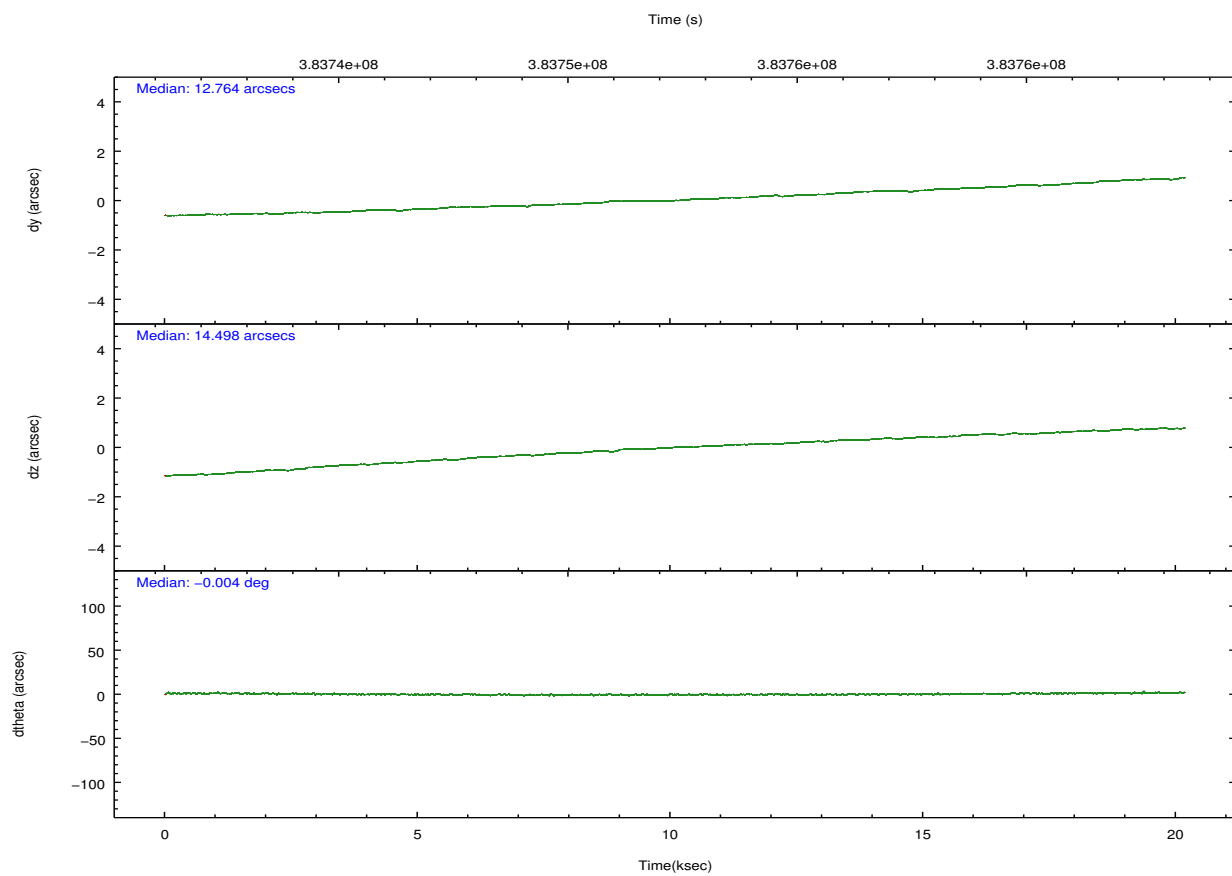
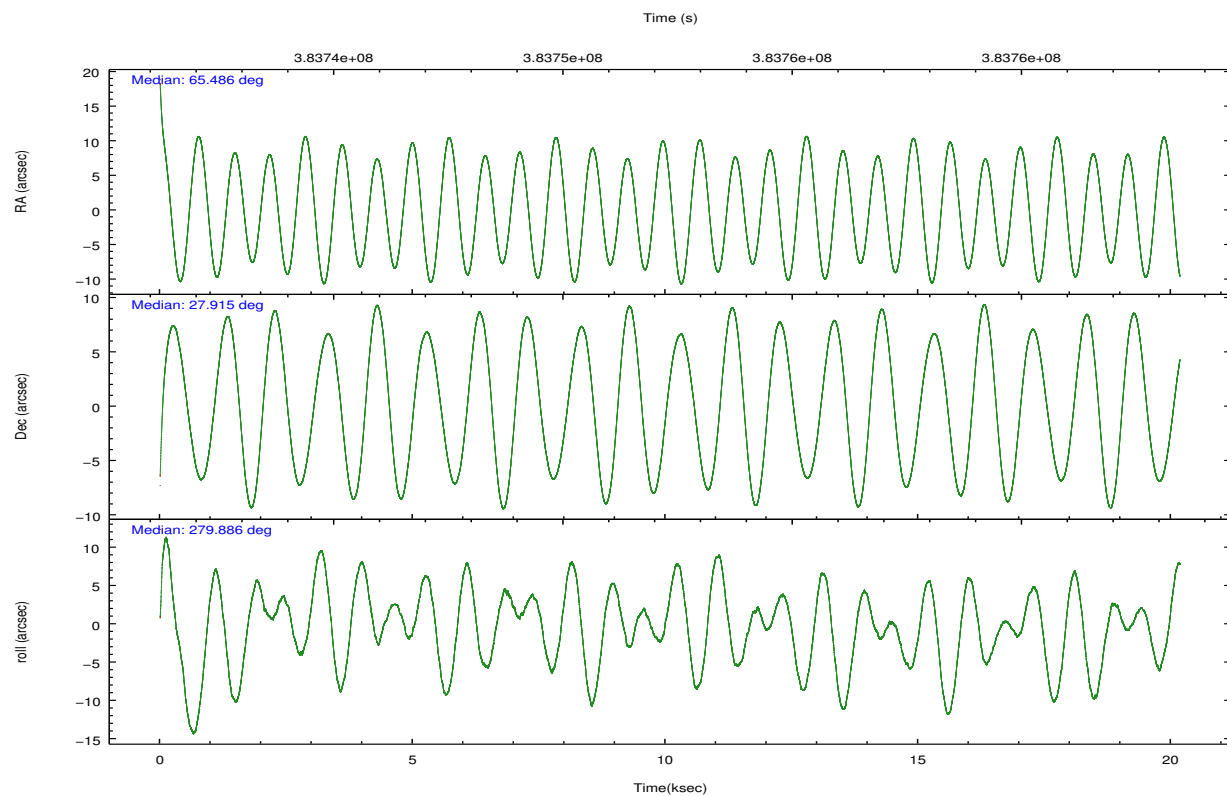
	<b>ccd 7</b>
grade 0 events	1489
	5%
grade 1 events	36
	0%
grade 2 events	2961
	10%
grade 3 events	1900
	6%
grade 4 events	1883
	6%
grade 5 events	2889
	10%
grade 6 events	6212
	21%
grade 7 events	10923
	38%

## 2.2 Compared Parameters

Parameter	Planned	Actual	Parameter	Planned	Actual
Instrument	ACIS	ACIS	Obspar format version number	7	7
Detector	ACIS-7	ACIS-7	Obspar file type	PREDICTED	ACTUAL
Grating	NONE	NONE	Obspar update status	NONE	UPDATED
Data mode	VFAINT	VFAINT	Number of optional ACIS chips dropped	0	0
Observation mode	POINTING	POINTING	On-chip summing requested	N	N
[deg] Pointing RA	65.465551	65.48573781048741	Subarray requested	CUSTOM	1/8
[deg] Pointing Dec	27.935498	27.91476555927185	Subarray start row	449	449
[deg] Pointing Roll	279.744773	279.8919406224288	Subarray row count	128	128
[mm] SIM focus pos	-0.684267	-0.6828225247311905	Alternating exposures requested	N	N
[mm] SIM defocus	0	0.001444936568705701	[s] Primary exposure time	0.000000	0.4
[mm] SIM translation stage pos	-190.132523	-190.1400660498719			
[mm] SIM translation stage offset	0	0.00754346686406393			
[s] Observation start time (MET)	383742431.184000	383740903.97993			
Observation start date	2010-02-28T11:06:05	2010-02-28T10:41:43			
[s] Observation end time (MET)	383762431.184000	383763191.58106			
Observation end date	2010-02-28T16:39:25	2010-02-28T16:53:11			
Read mode	TIMED	TIMED			

## 2.3 Aspect



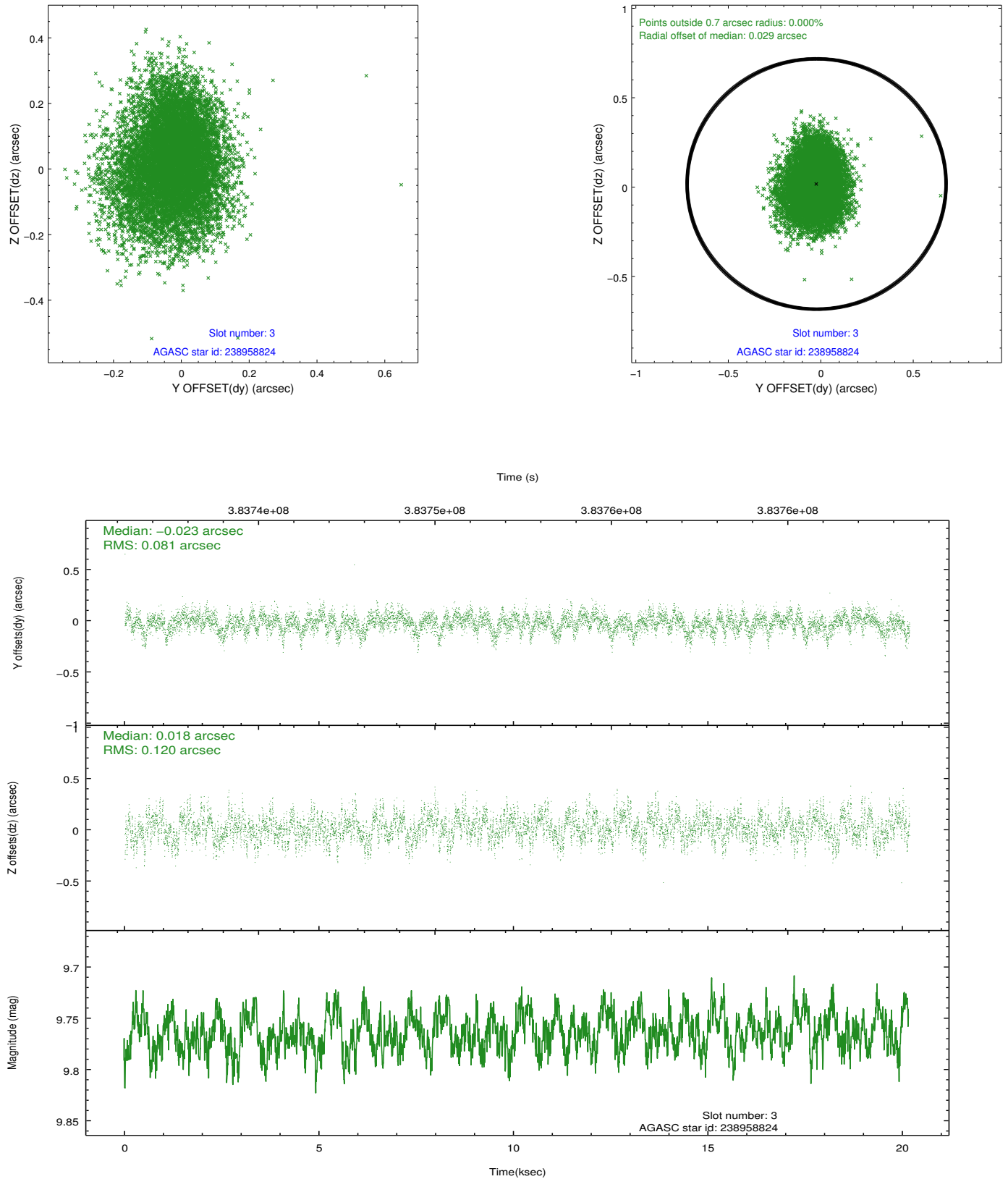


Slot Statistics

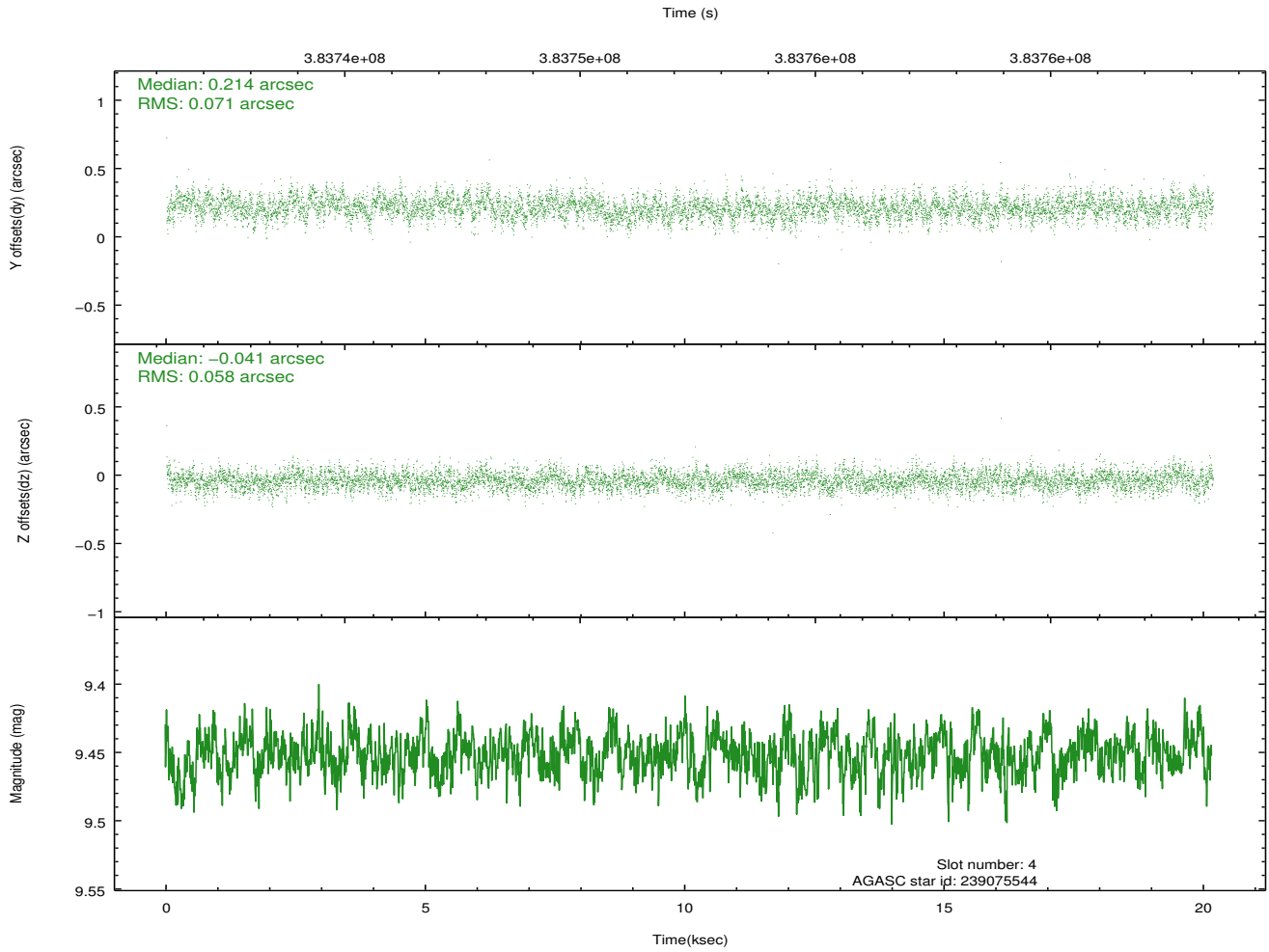
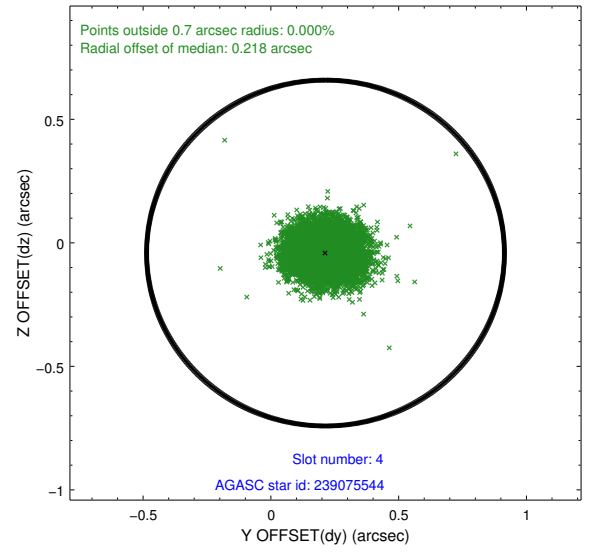
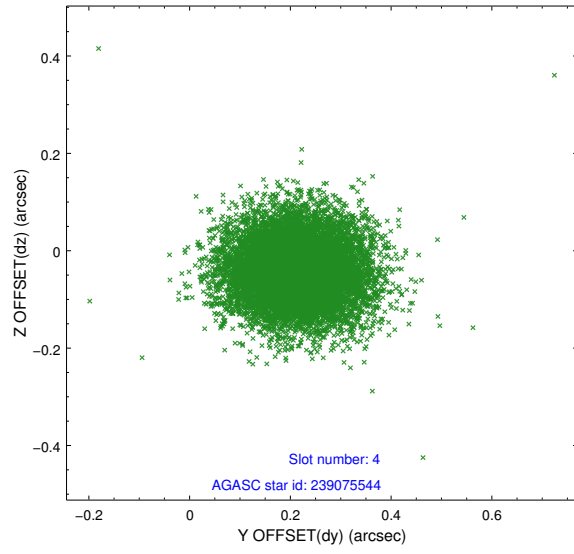
slot	status	id	mag	n_pts	med_dy	med_dz	dr1	dr2	ra	dec	mean_y	mean_z
0	FID	ACIS-S-2	6.95	4922	-0.089	-0.058	0.016	0.030	0.000000	0.000000	-765.83	-1735.84
1	FID	ACIS-S-4	7.03	4922	0.100	0.045	0.012	0.023	0.000000	0.000000	2147.56	172.56
2	FID	ACIS-S-6	7.18	4921	-0.037	0.021	0.008	0.013	0.000000	0.000000	396.45	810.14
3	GUIDE	238958824	9.76	9830	-0.023	0.018	0.154	0.252	64.737810	27.958818	-479.81	-2264.12
4	GUIDE	239075544	9.45	9834	0.214	-0.041	0.097	0.160	65.454352	27.284696	2303.65	-431.74
5	GUIDE	239600488	8.38	9841	0.021	0.080	0.092	0.141	65.933091	28.186307	-639.79	1615.92
6	GUIDE	239602936	8.77	9831	-0.106	-0.099	0.083	0.132	65.403432	28.416154	-1738.49	99.09
7	GUIDE	239603464	8.93	9837	-0.100	0.040	0.075	0.122	65.495198	28.301805	-1283.38	315.93

## 2.4 Star Slots

### 2.4.1 Slot 3

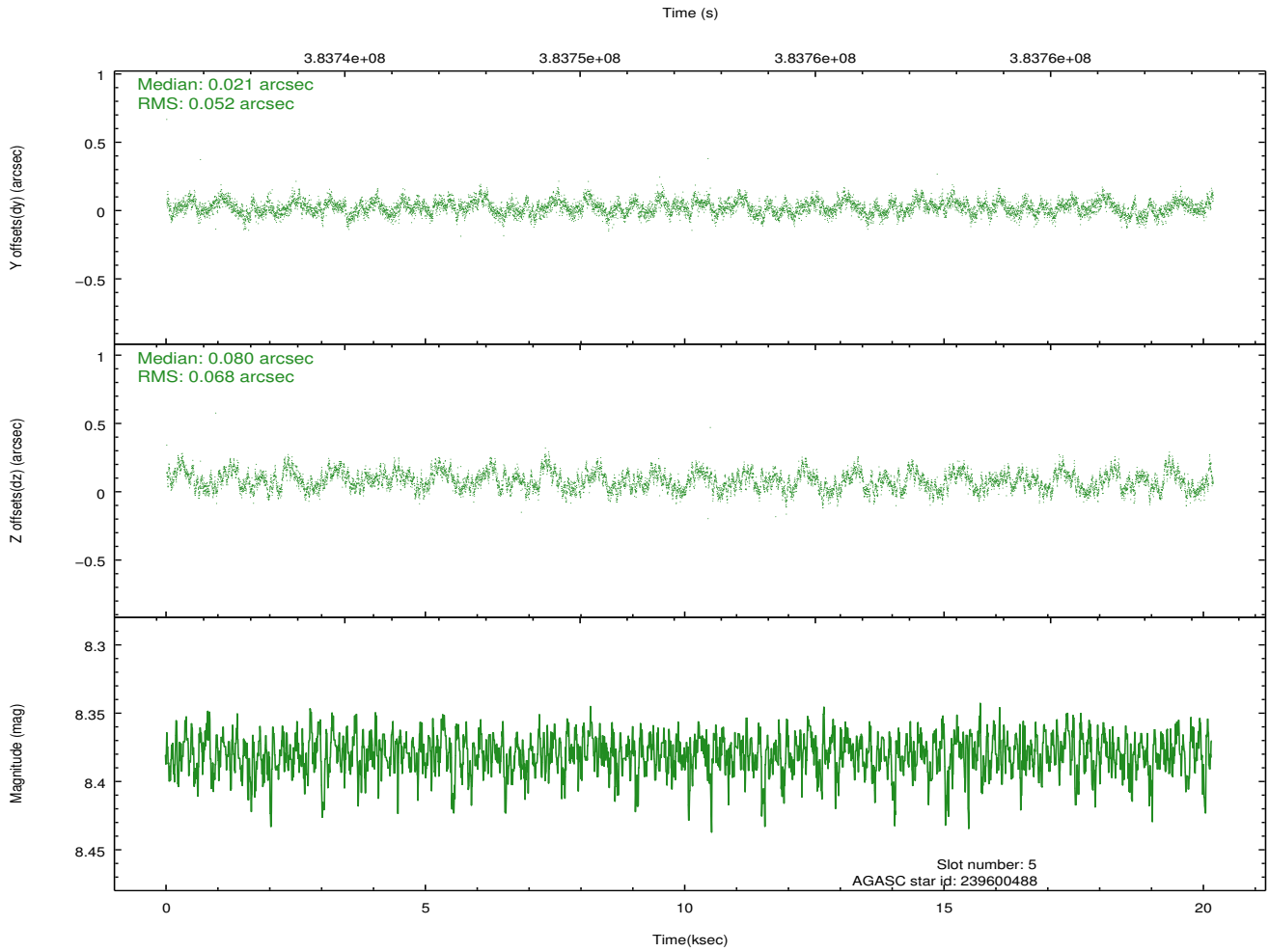
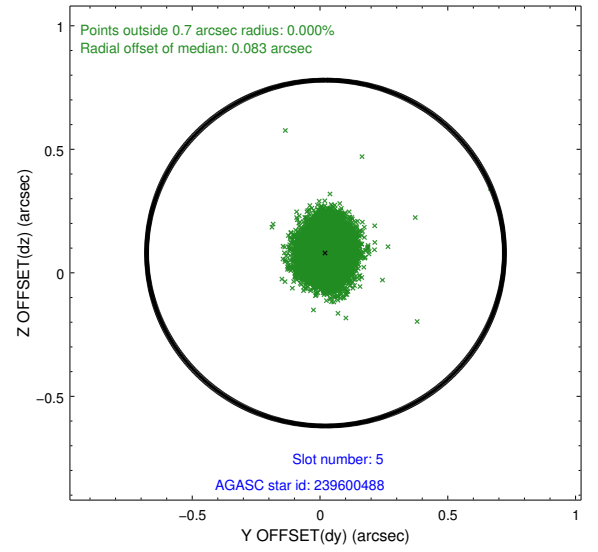
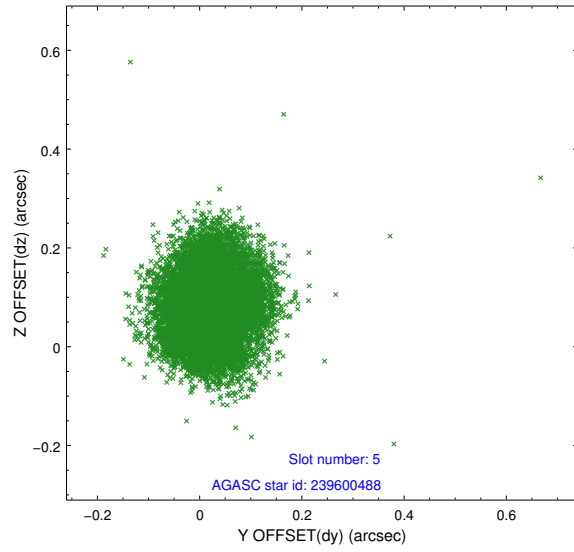


## 2.4.2 Slot 4

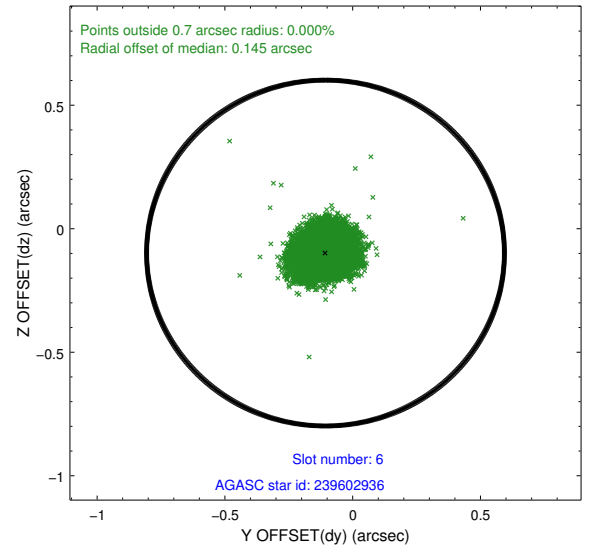
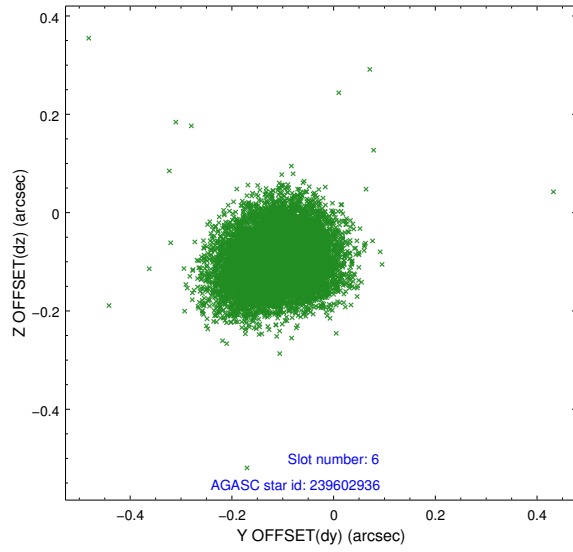




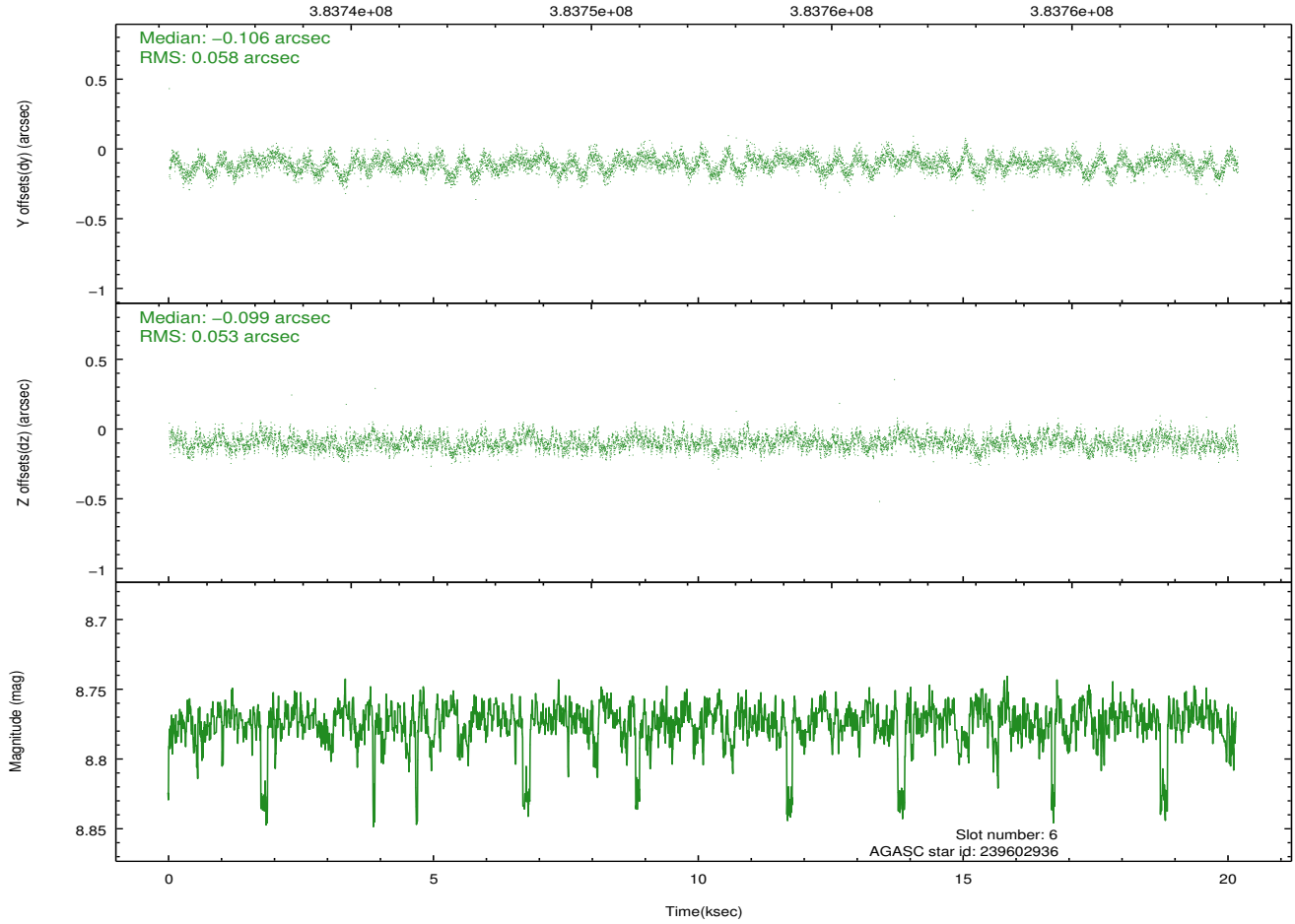
### 2.4.3 Slot 5



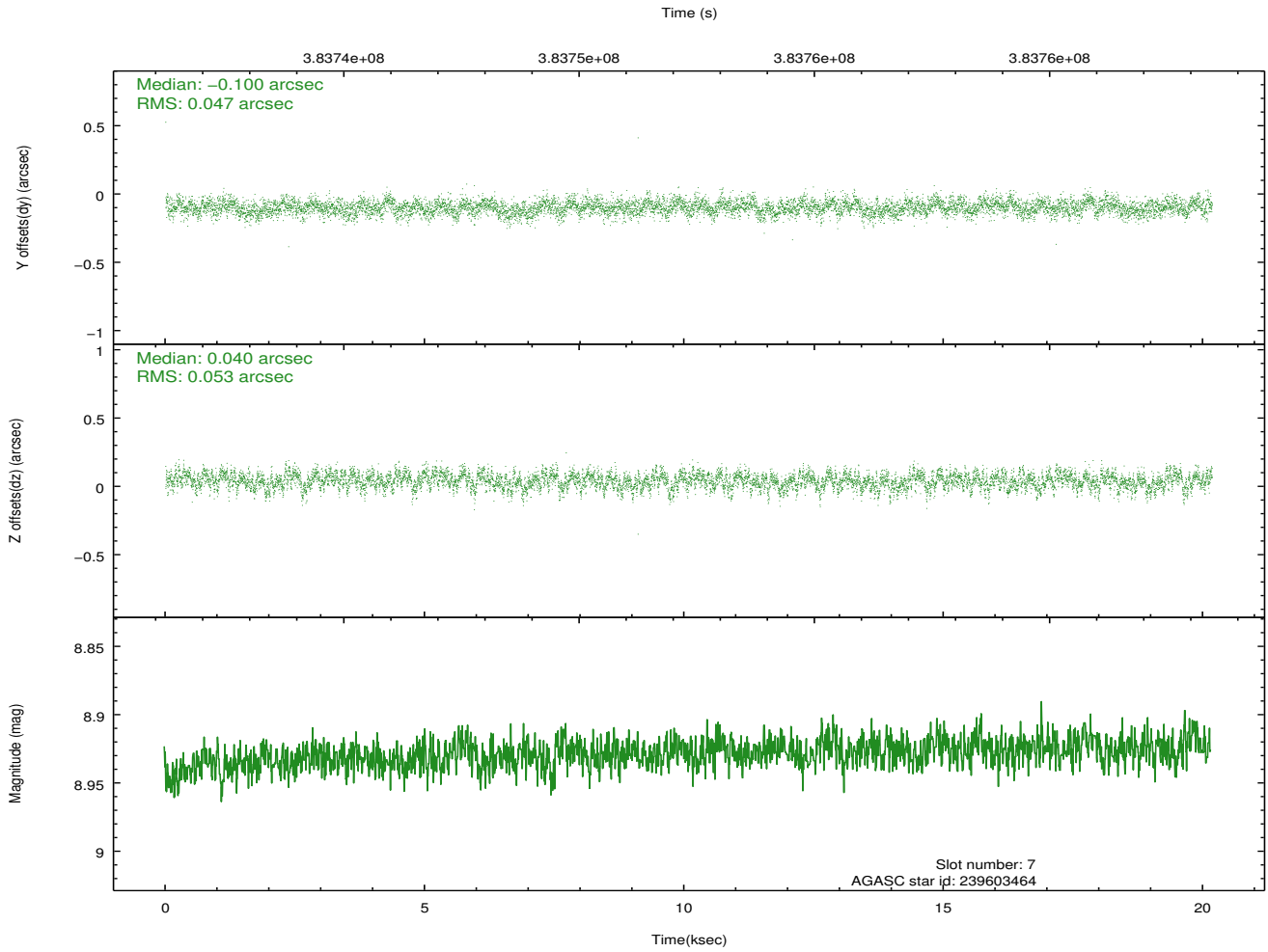
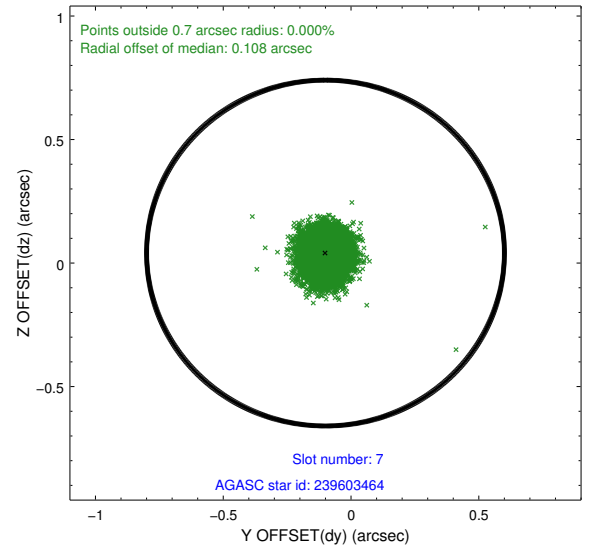
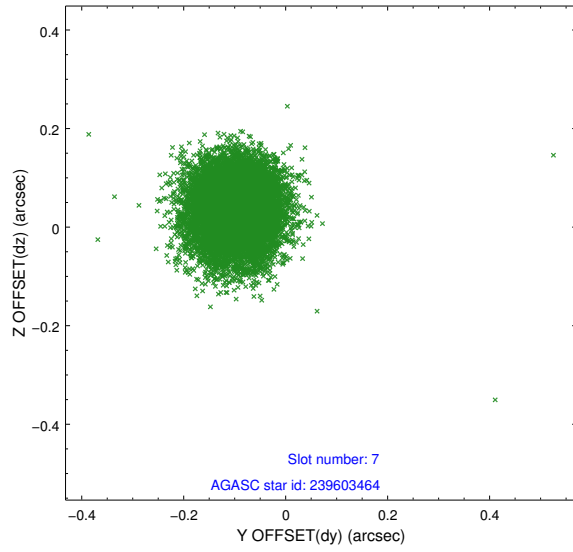
## 2.4.4 Slot 6



Time (s)

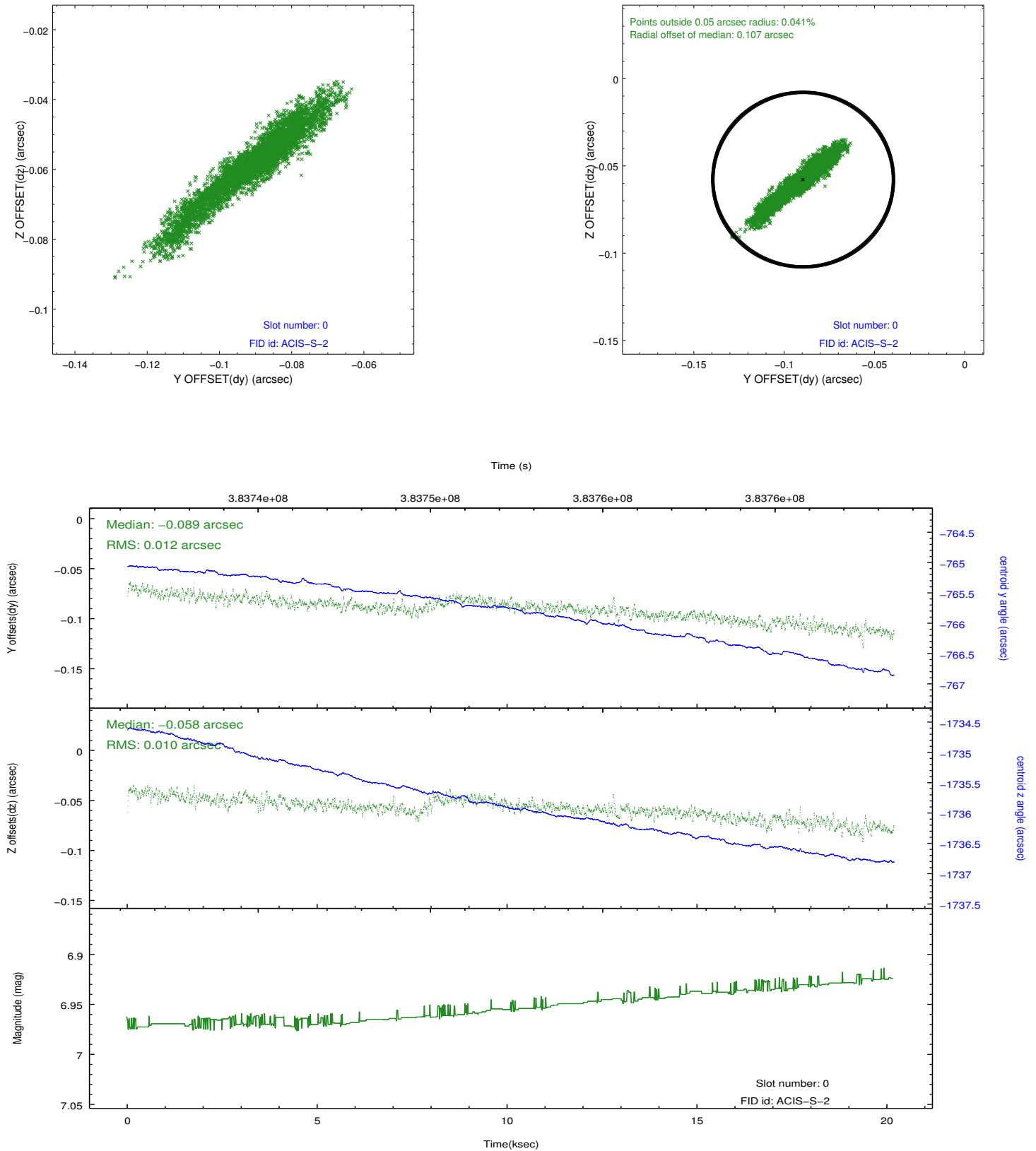


## 2.4.5 Slot 7

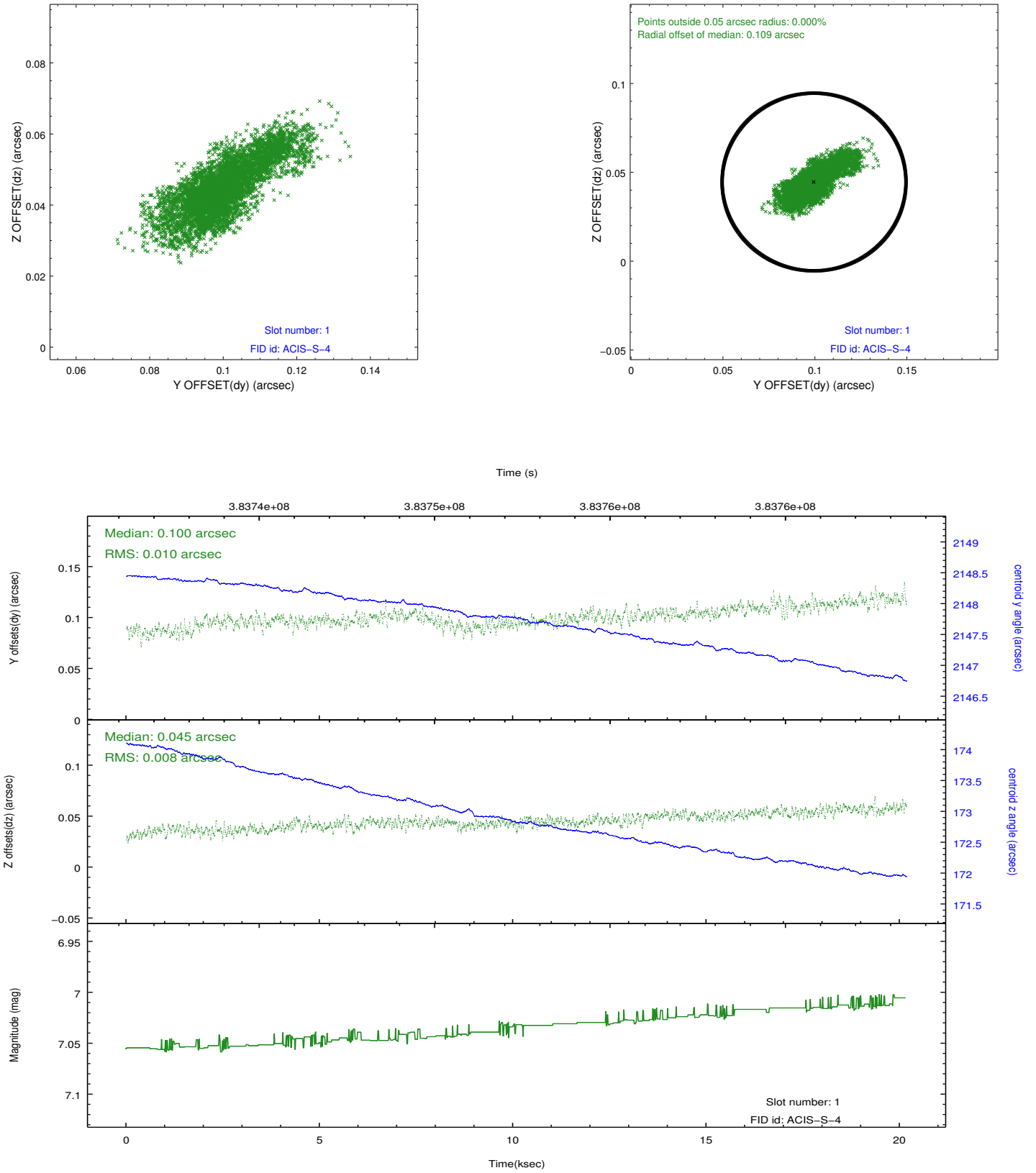


## 2.5 FID Slots

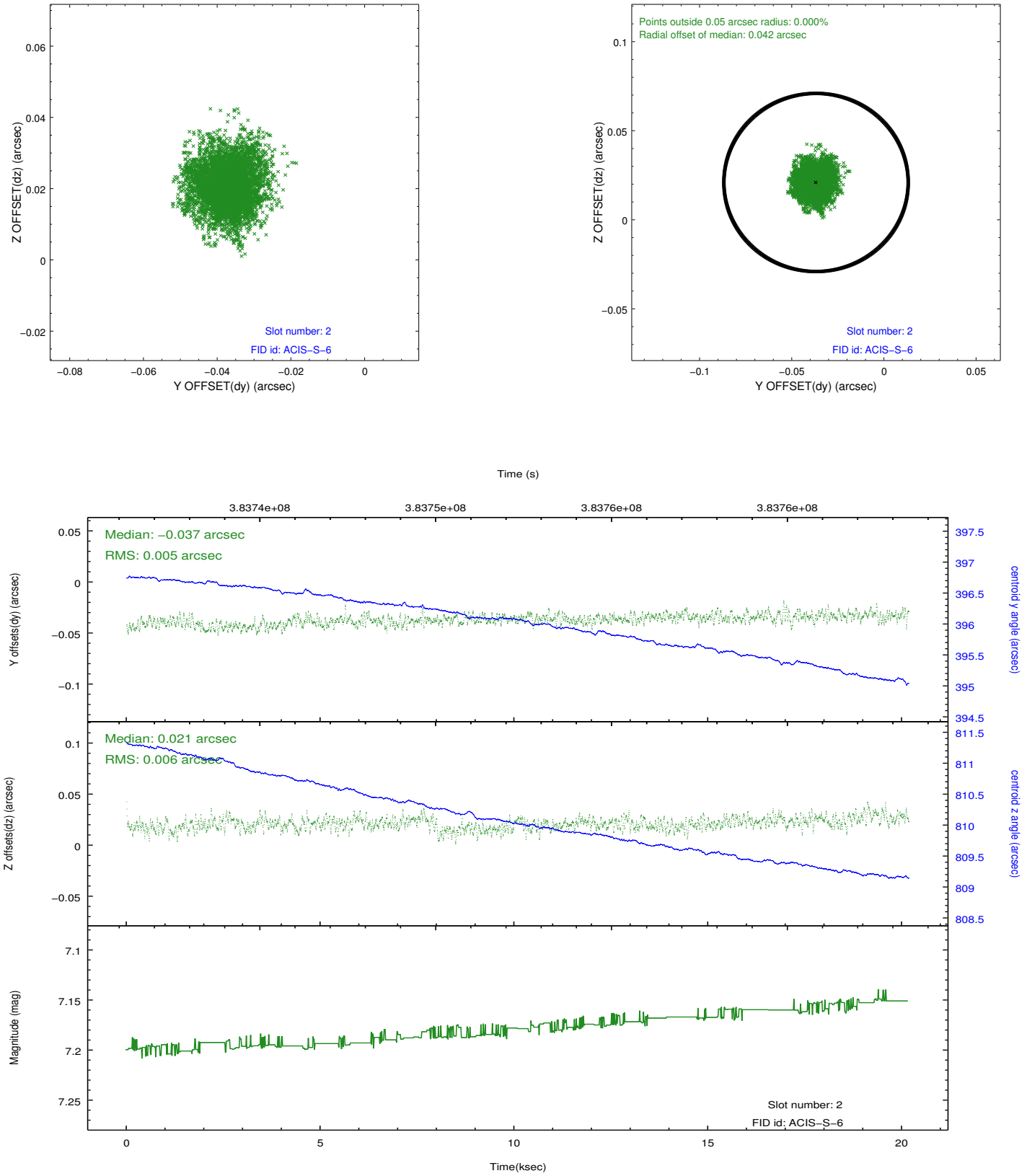
### 2.5.1 Slot 0



## 2.5.2 Slot 1



### 2.5.3 Slot 2



## A Summary

### A.1 Status

V&V Scientist	Jen Lauer
V&V Date (YYYY-MM-DD)	2012.06.28
V&V Edition	1
V&V Disposition and Status	OK
V&V Charge Time	20.175198797464

### A.2 Comments