

V&V Reference Report

L2 ASCDS Version : 8.4.5

Observation 10980 - L2 Version 2
Chandra X-Ray Center

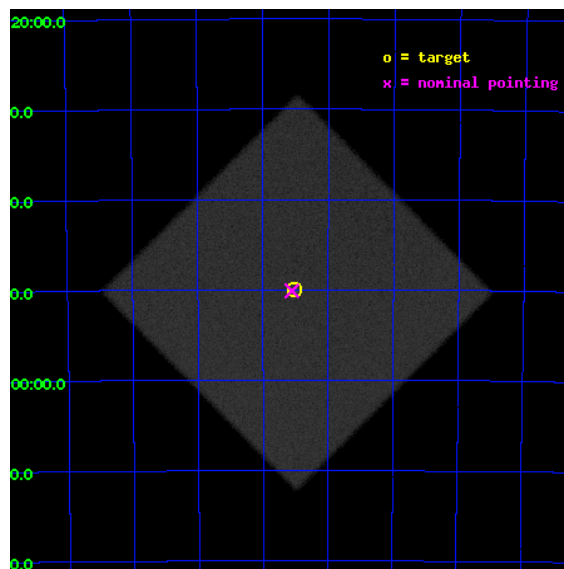
L2 Processing Date : Jun 27 2012

Contents

1	Front	2
2	OBI	3
2.1	OBI	3
2.1.1	Images	3
2.1.2	Parameters	4
2.1.3	Events	4
2.2	Compared Parameters	5
2.3	Aspect	6
2.4	Star Slots	9
2.4.1	Slot 3	9
2.4.2	Slot 4	10
2.4.3	Slot 5	11
2.4.4	Slot 6	12
2.4.5	Slot 7	13
2.5	FID Slots	14
2.5.1	Slot 0	14
2.5.2	Slot 1	15
2.5.3	Slot 2	16
A	Summary	17
A.1	Status	17
A.2	Comments	17

1 Front

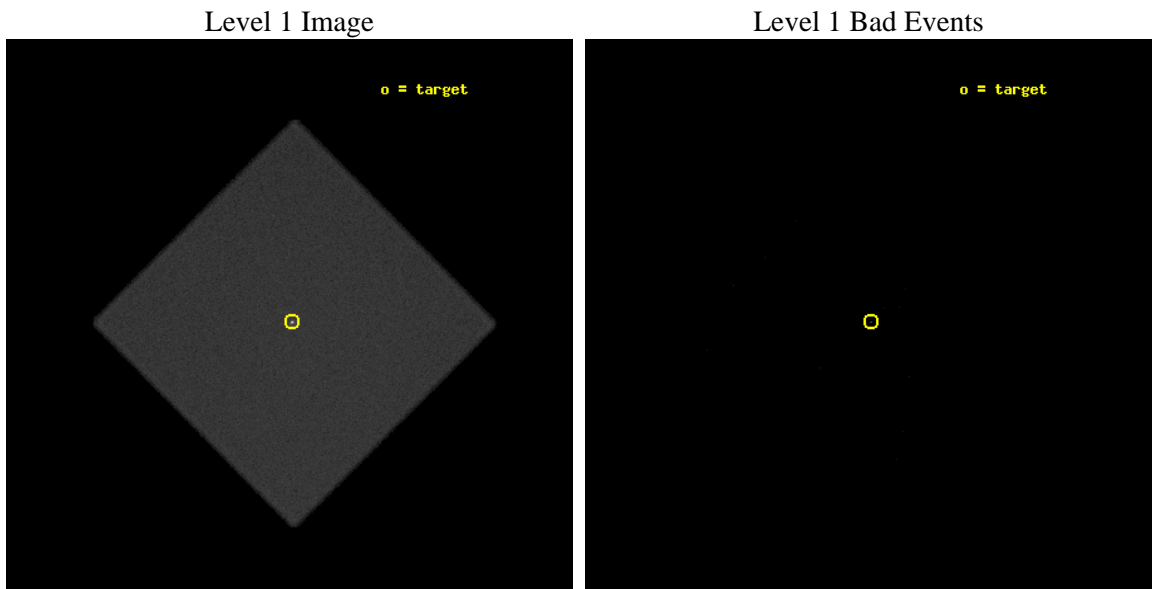
seq_num	200612	Sequence number
obs_id	10980	Observation id
title	The Ups and Downs of Alpha Centauri	Proposal title
observer	Dr. Thomas Ayres	Principal investigator
object	Alpha Centauri	Source name
ra_targ	219.880833	Observer's specified target RA [deg]
dec_targ	-60.833611	Observer's specified target Dec [deg]
ra_nom	219.88908899173	Nominal RA [deg]
dec_nom	-60.835188600643	Nominal Dec [deg]
roll_nom	0.20653299381155	Nominal Roll [deg]
revision	2	Processing version of data
ontime	10181.325517774	[s]
livetime	9763.1334740931	Ontime multiplied by DTCOR
l2events	916517	Number of level 2 events



2 OBI

2.1 OBI

2.1.1 Images



2.1.2 Parameters

obi_num	0	Obi number	sched_exp_time	10000.000000	[s] Scheduled observation exposure time
ascdsver	8.4.5	Processing system revision	ontime	10181.325517774	[s]
caldsver	4.5.0	 	l1events	1364258	Number of level 1 events
date	2012-06-27T18:14:54	Date and time of file creation			
revision	2	Processing version of data			

2.1.3 Events

Level 1 Events

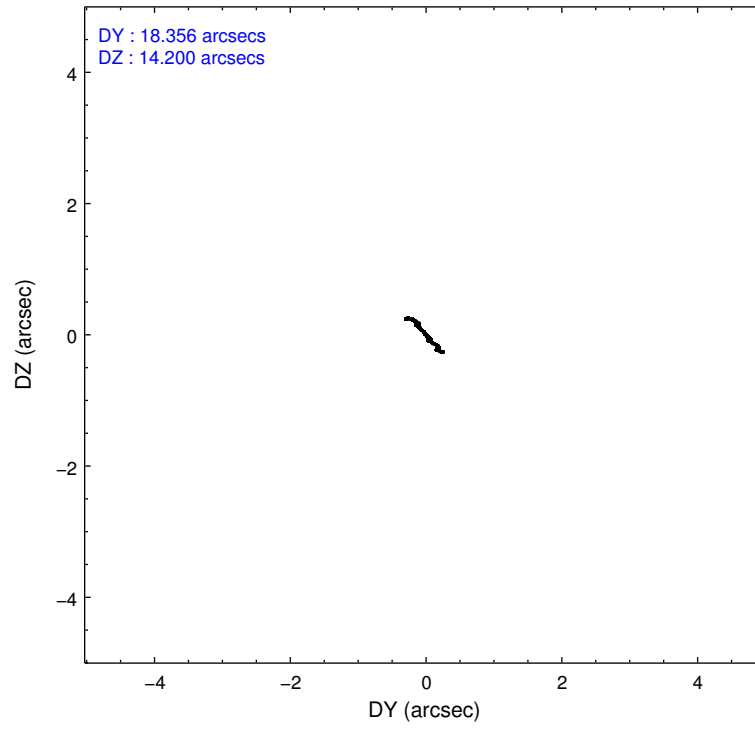
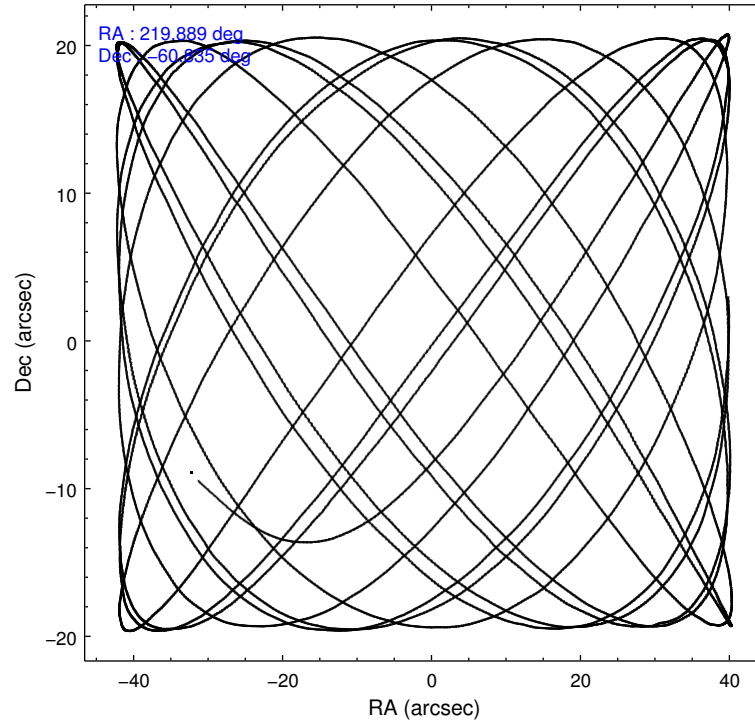
	segment 0
level 1 events	1364258
rejected events	97443
rejected %	7%

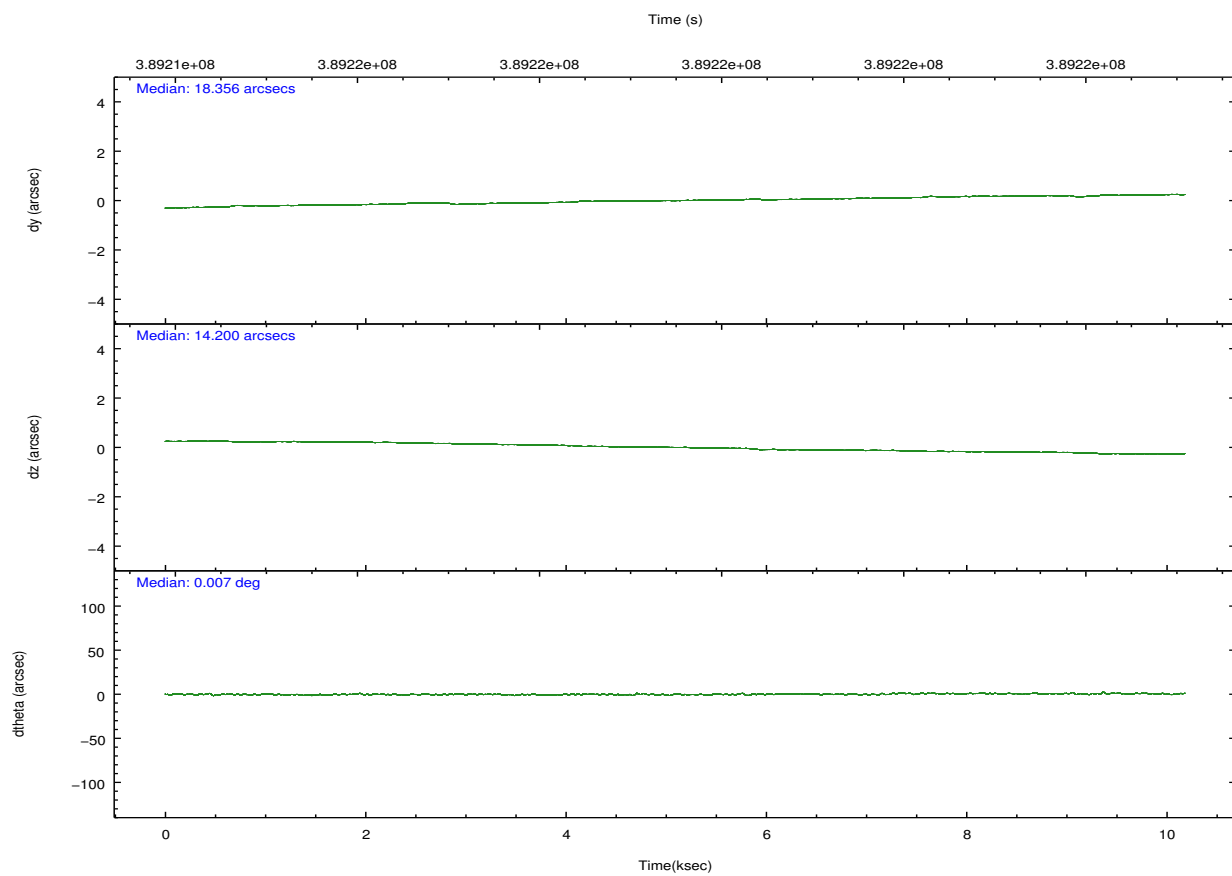
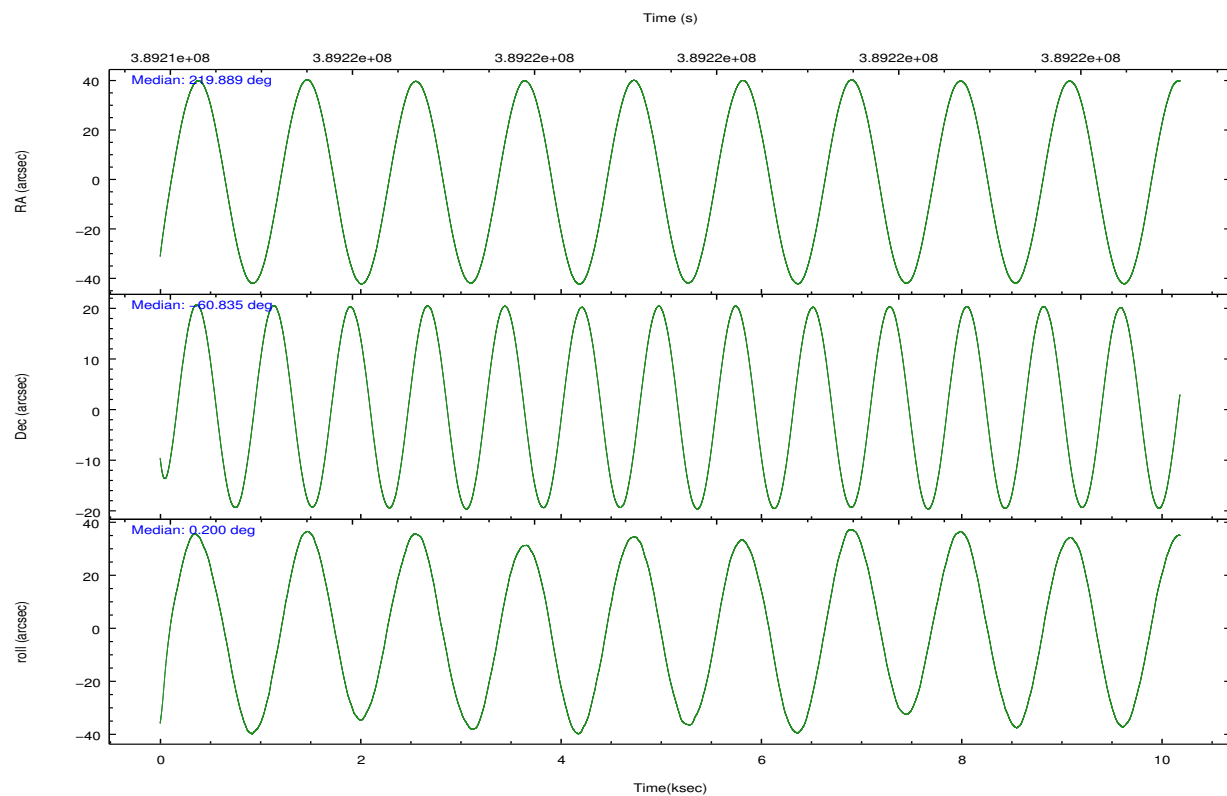
2.2 Compared Parameters

Parameter	Planned	Actual
Instrument	HRC	HRC
Detector	HRC-I	HRC-I
Grating	NONE	NONE
Data mode	OBSERVING	OBSERVING
Observation mode	POINTING	POINTING
[deg] Pointing RA	219.841297	219.8890889917309
[deg] Pointing Dec	-60.849366	-60.83518860064274
[deg] Pointing Roll	0.260302	0.2065329938115538
[mm] SIM focus pos	-1.040293	-1.038866356238299
[mm] SIM defocus	0	0.001426264420575141
[mm] SIM translation stage pos	126.985494	126.9829799899862
[mm] SIM translation stage offset	0	0.002508901615314585
[s] Observation start time (MET)	389214578.184000	389213692.3954
Observation start date	2010-05-02T19:08:32	2010-05-02T18:54:52
[s] Observation end time (MET)	389224578.184000	389225733.58351
Observation end date	2010-05-02T21:55:12	2010-05-02T22:15:33

Parameter	Planned	Actual
Obspar format version number	7	7
Obspar file type	PREDICTED	ACTUAL
Obspar update status	NONE	UPDATED

2.3 Aspect



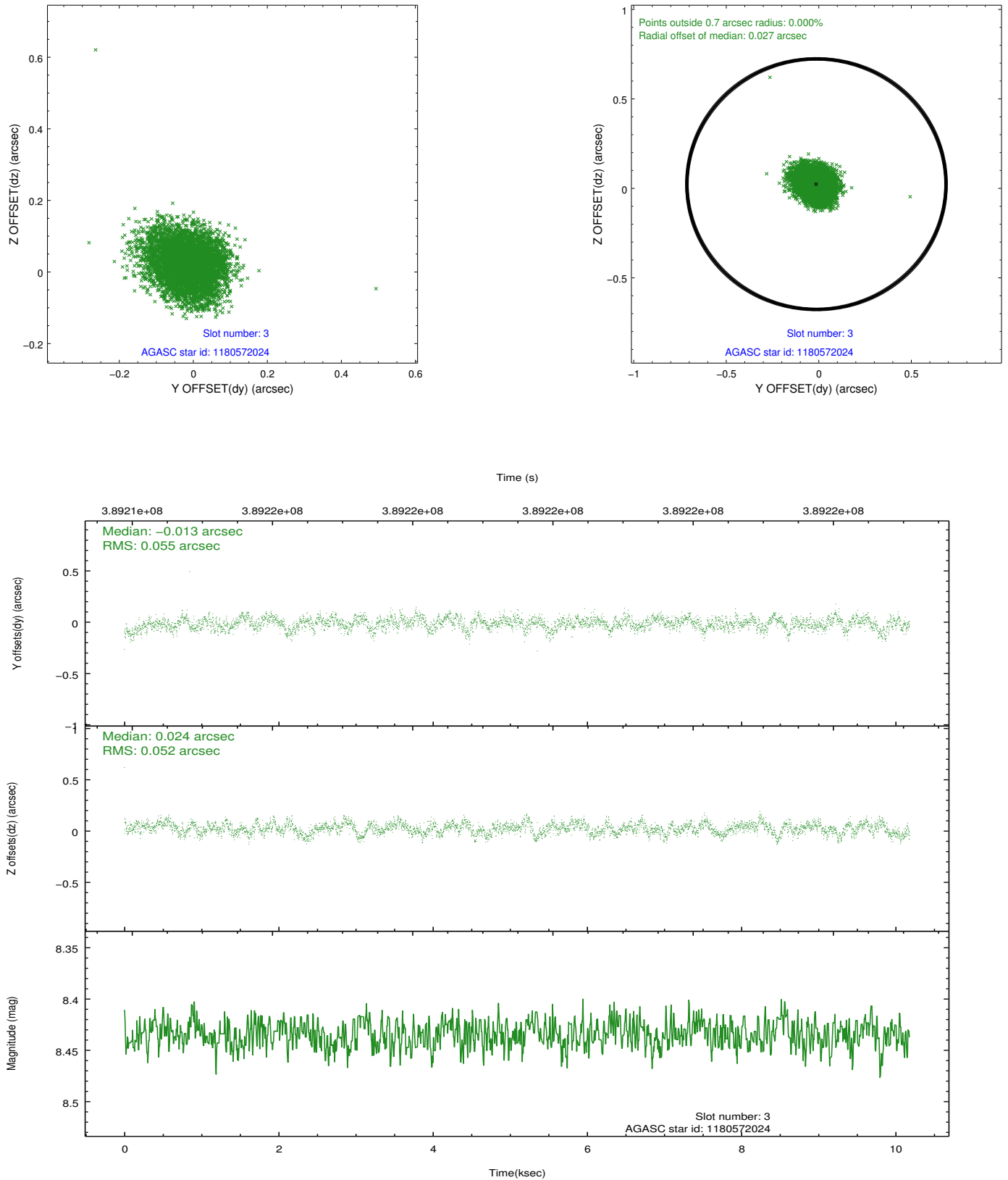


Slot Statistics

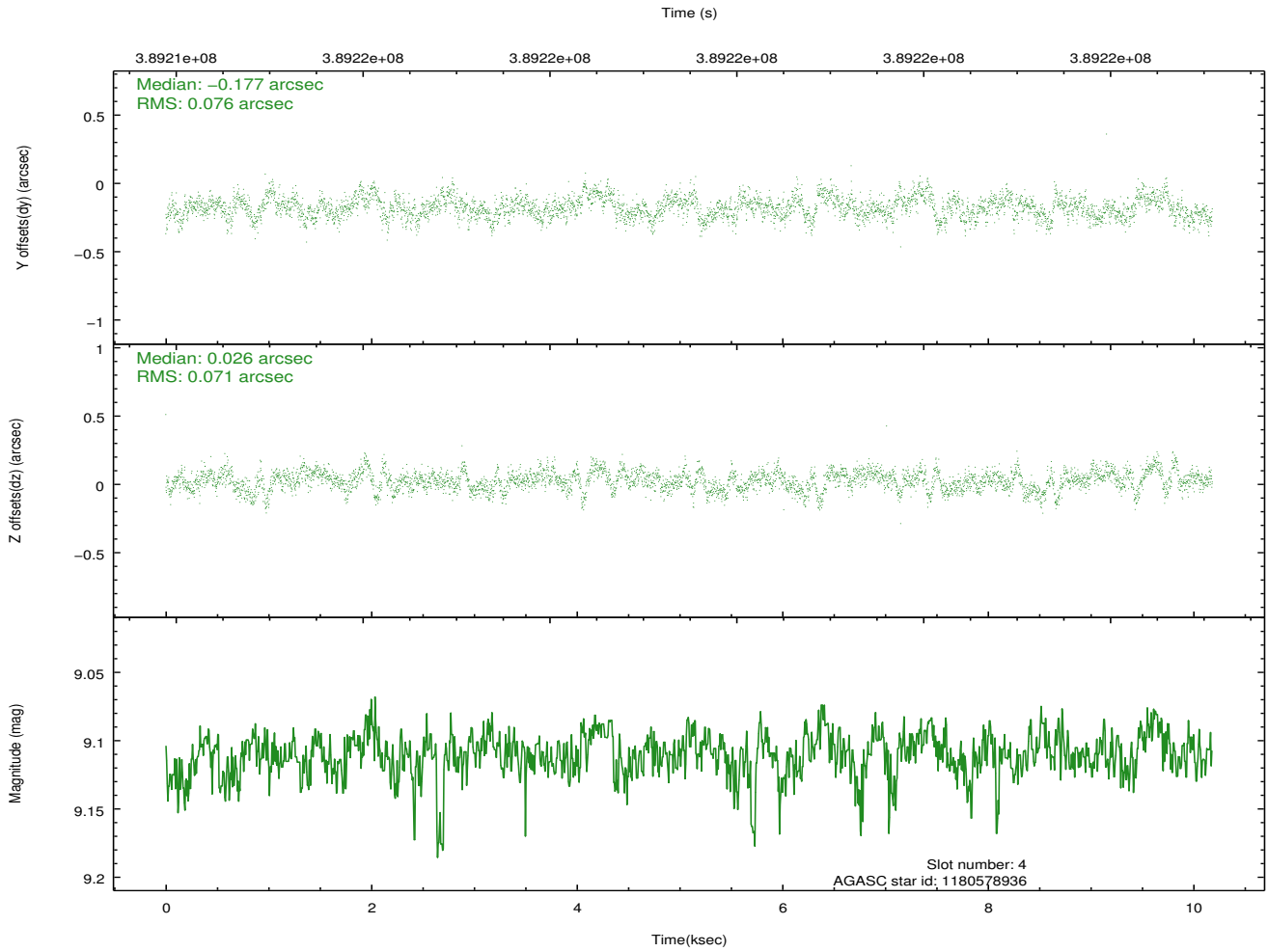
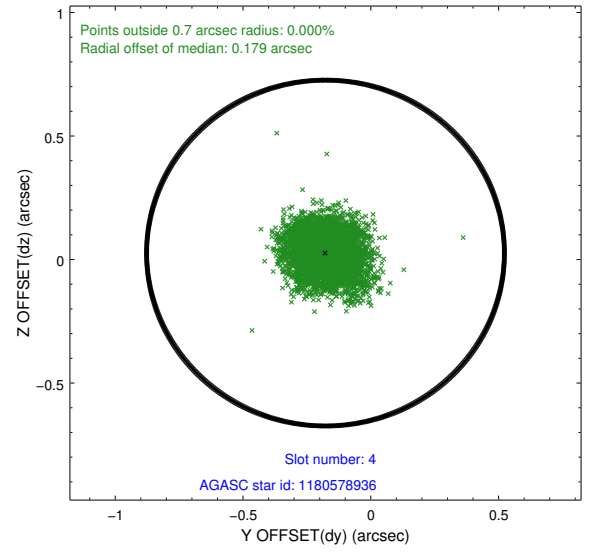
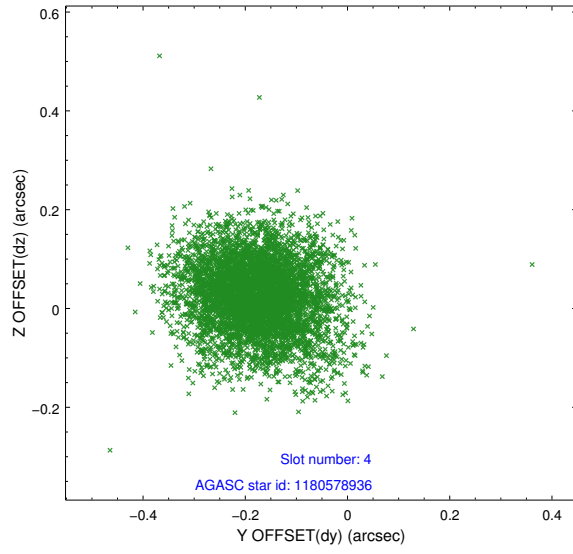
slot	status	id	mag	n_pts	med_dy	med_dz	dr1	dr2	ra	dec	mean_y	mean_z
0	FID	HRC-I-1	6.92	2484	-0.089	0.030	0.010	0.016	0.000000	0.000000	-774.31	-1302.25
1	FID	HRC-I-2	6.97	2484	0.230	-0.115	0.012	0.019	0.000000	0.000000	838.33	-1304.45
2	FID	HRC-I-3	7.01	2484	-0.023	-0.007	0.012	0.021	0.000000	0.000000	-1202.44	1001.74
3	GUIDE	1180572024	8.43	4966	-0.013	0.024	0.080	0.128	220.930377	-60.981487	1899.59	-499.57
4	GUIDE	1180578936	9.11	4963	-0.177	0.026	0.110	0.181	220.919358	-61.155393	1867.49	-1125.22
5	GUIDE	1180589152	9.31	4964	0.129	0.262	0.209	0.346	219.760705	-61.382926	-146.97	-1919.94
6	GUIDE	1180612104	9.00	4959	-0.052	-0.188	0.104	0.171	220.502279	-60.631704	1170.33	772.26
7	GUIDE	1180607792	9.28	4964	0.089	-0.129	0.123	0.190	218.783899	-60.204433	-1881.00	2315.28

2.4 Star Slots

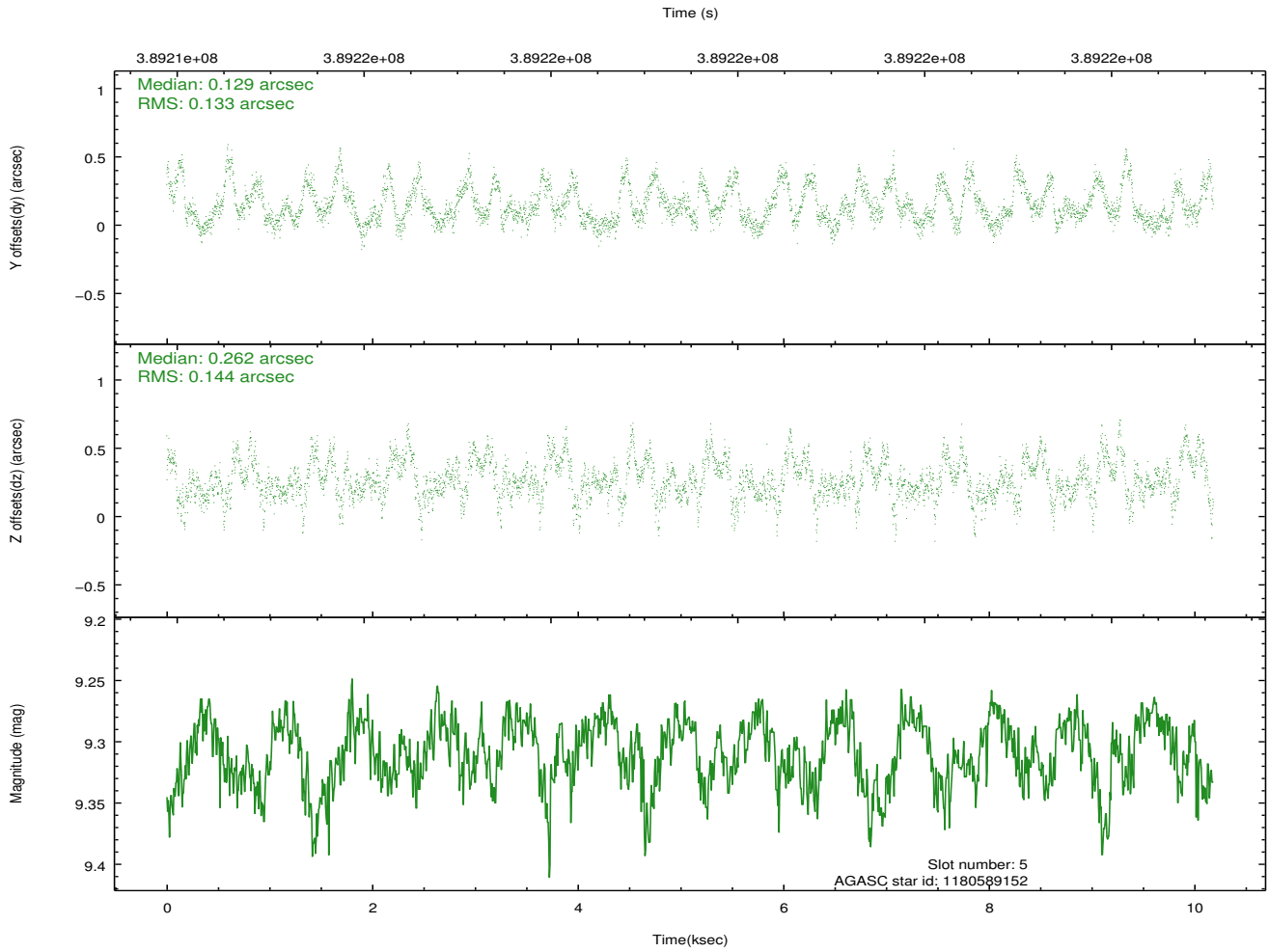
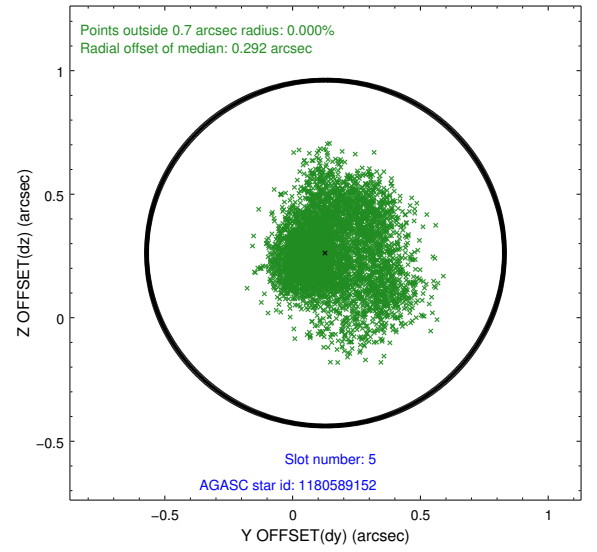
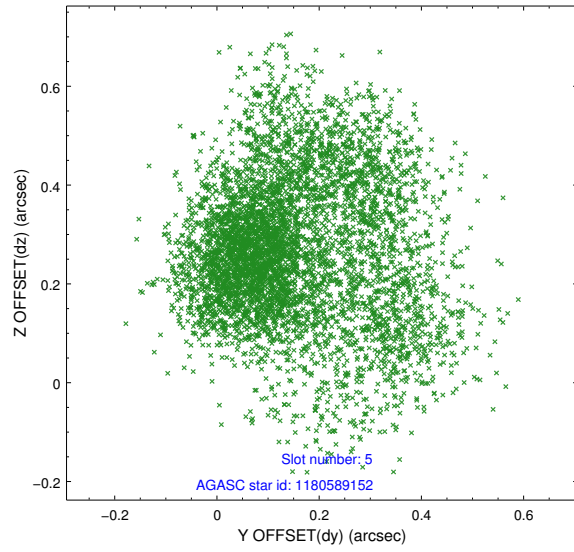
2.4.1 Slot 3



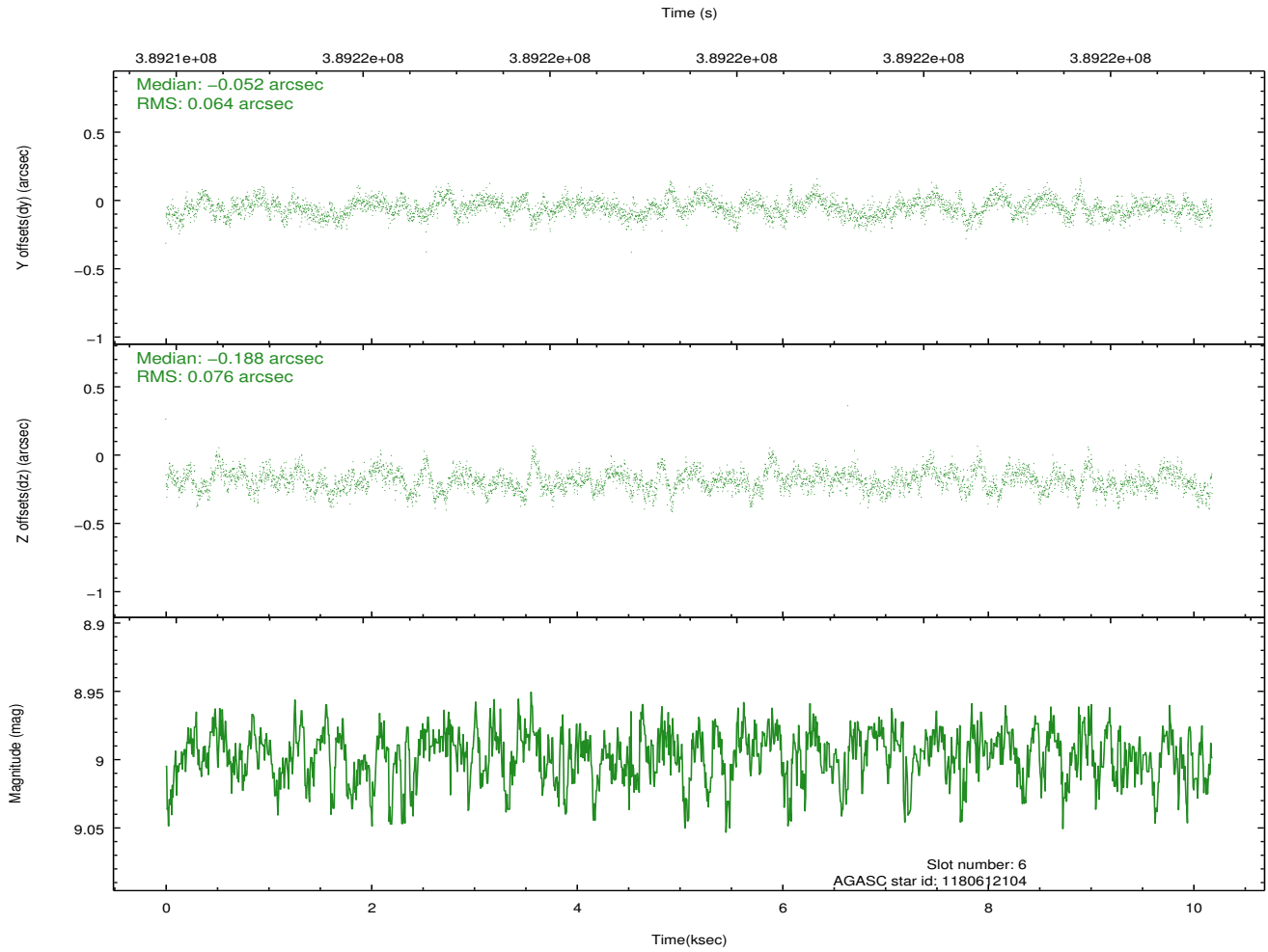
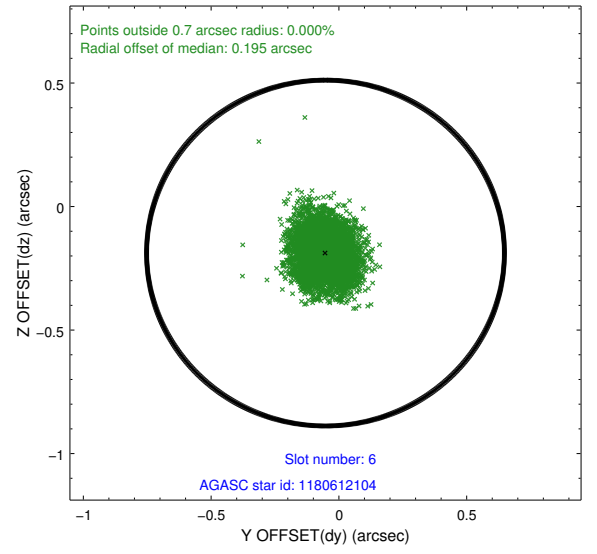
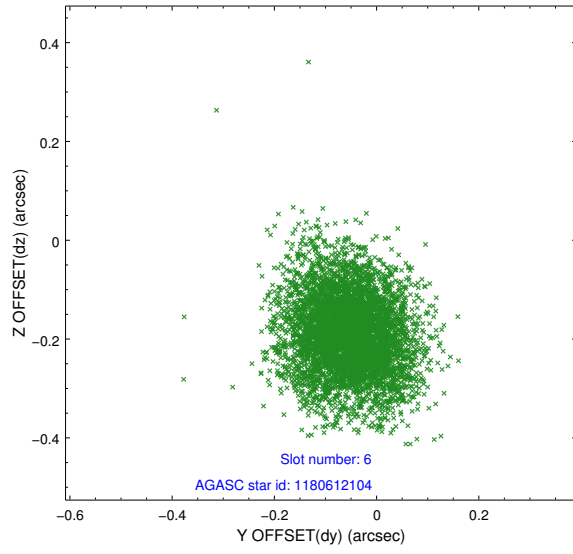
2.4.2 Slot 4



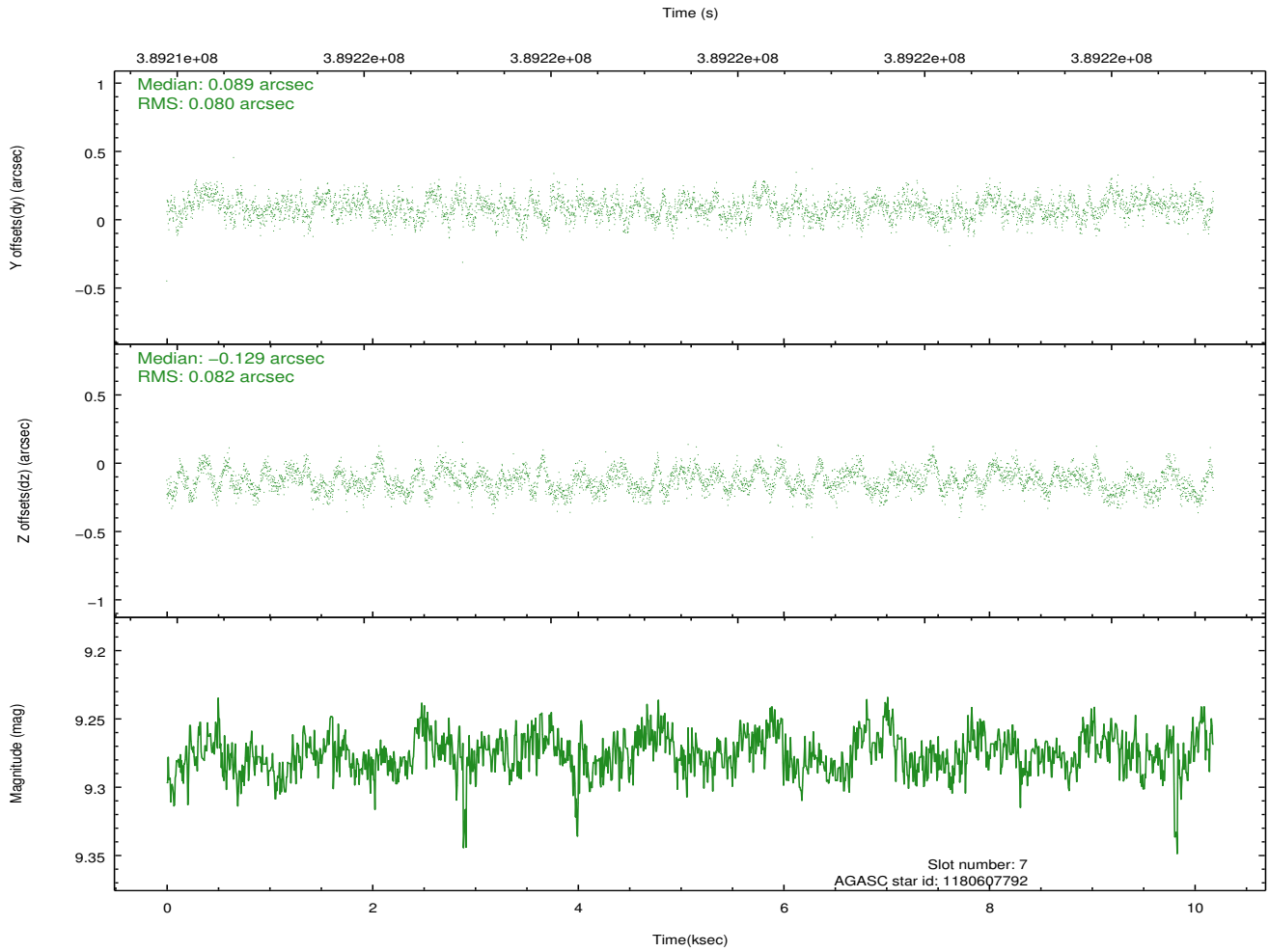
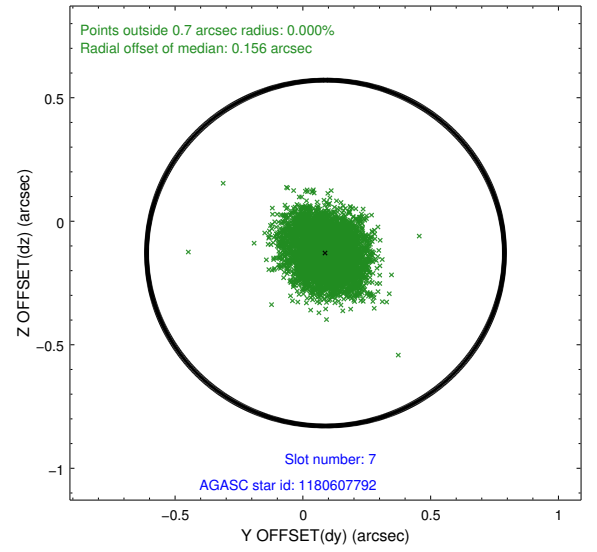
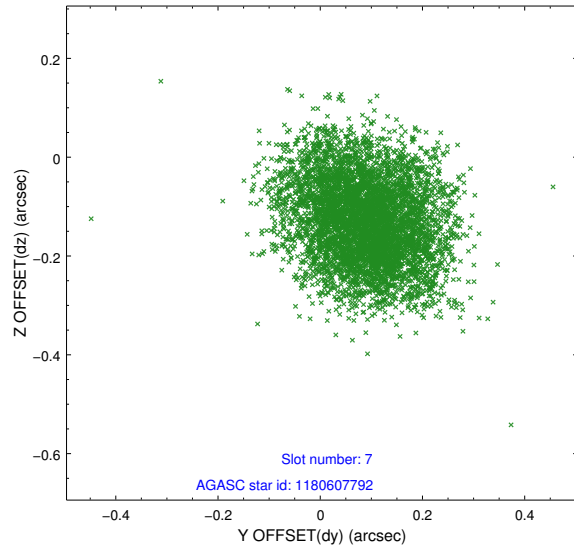
2.4.3 Slot 5



2.4.4 Slot 6

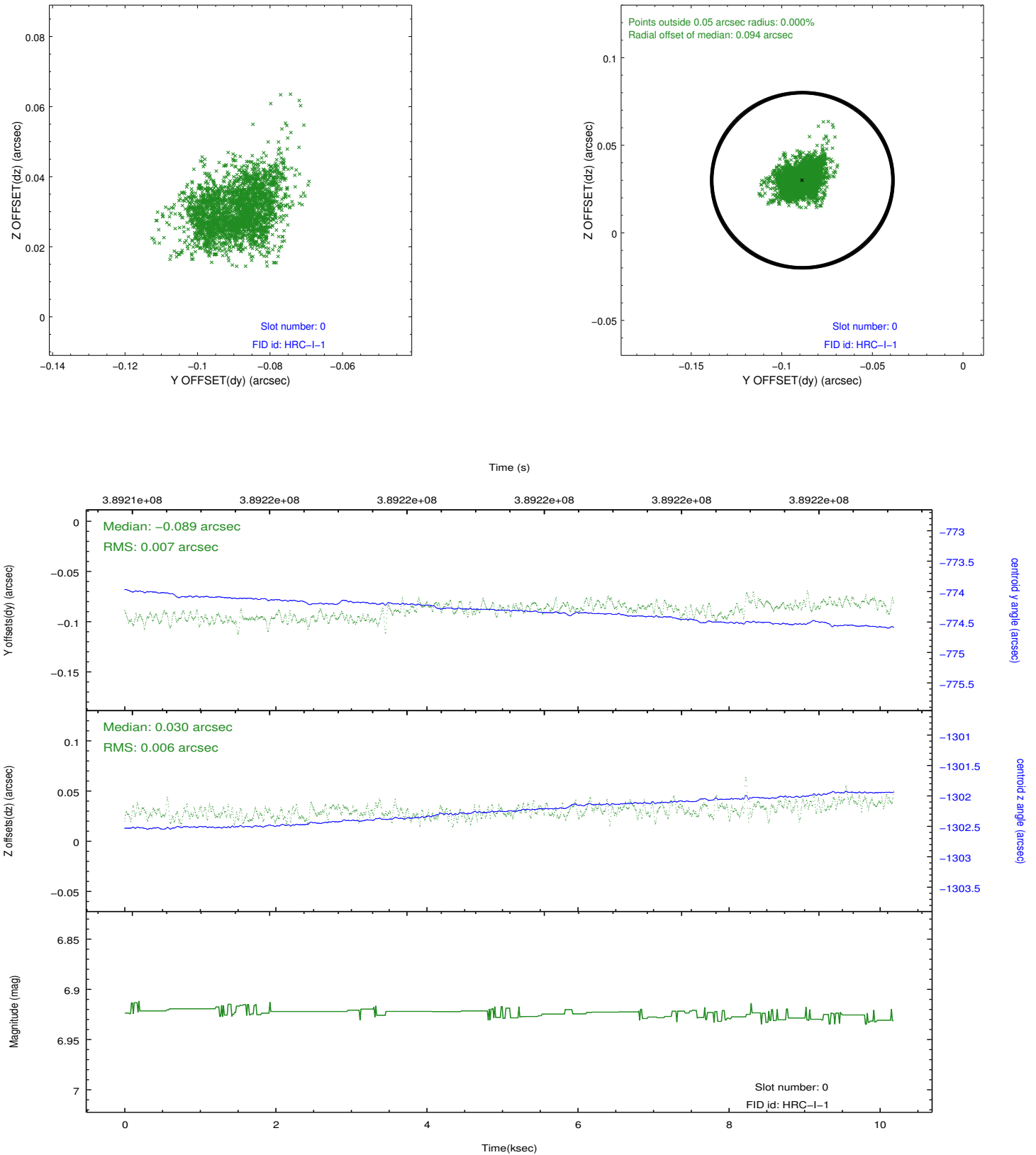


2.4.5 Slot 7

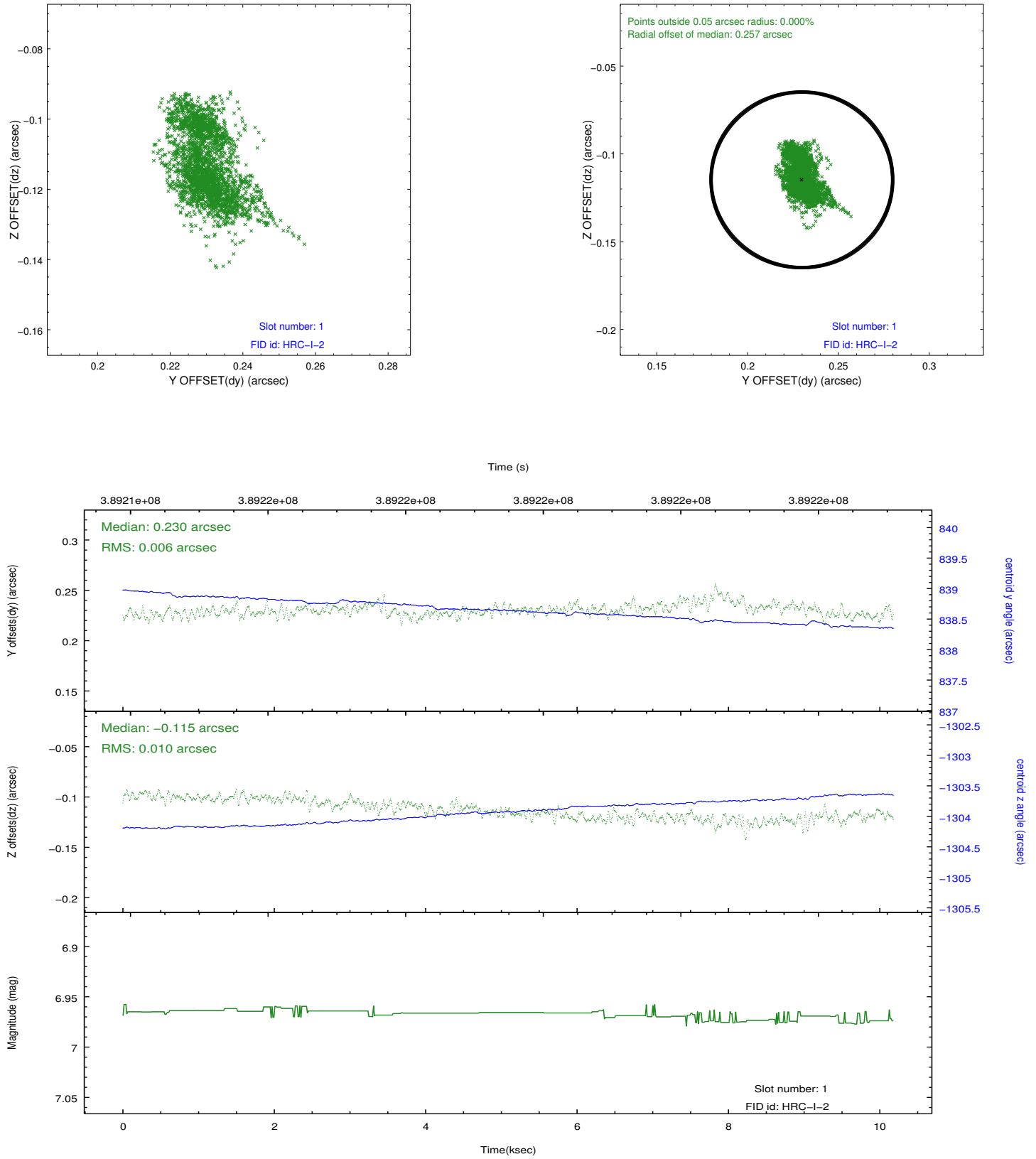


2.5 FID Slots

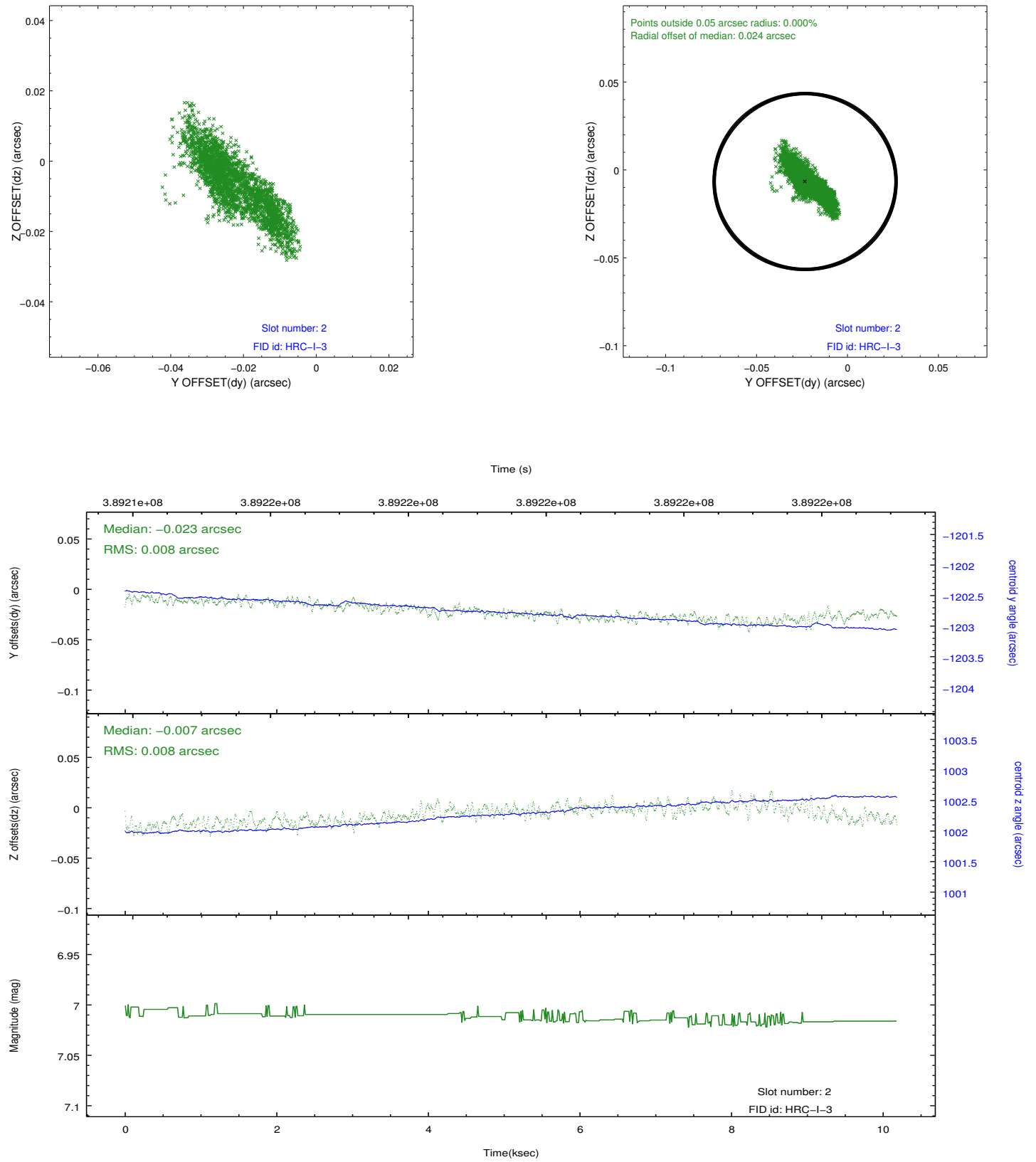
2.5.1 Slot 0



2.5.2 Slot 1



2.5.3 Slot 2



A Summary

A.1 Status

V&V Scientist	Beth Sundheim
V&V Date (YYYY-MM-DD)	2012.07.03
V&V Edition	1
V&V Disposition and Status	OK
V&V Charge Time	10.181069267333

A.2 Comments