

V&V Reference Report

L2 ASCDS Version : 8.4.5

Observation 10944 - L2 Version 2
Chandra X-Ray Center

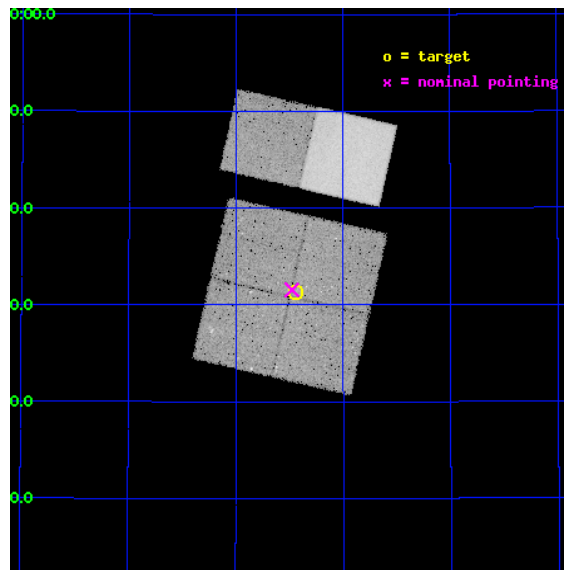
L2 Processing Date : Jun 20 2012

Contents

1	Front	2
2	OBI	3
2.1	OBI	3
2.1.1	Images	3
2.1.2	Bias	3
2.1.3	Parameters	4
2.1.4	Events	4
2.2	Compared Parameters	5
2.3	Aspect	6
2.4	Star Slots	9
2.4.1	Slot 3	9
2.4.2	Slot 4	10
2.4.3	Slot 5	11
2.4.4	Slot 6	12
2.4.5	Slot 7	13
2.5	FID Slots	14
2.5.1	Slot 0	14
2.5.2	Slot 1	15
2.5.3	Slot 2	16
A	Summary	17
A.1	Status	17
A.2	Comments	17

1 Front

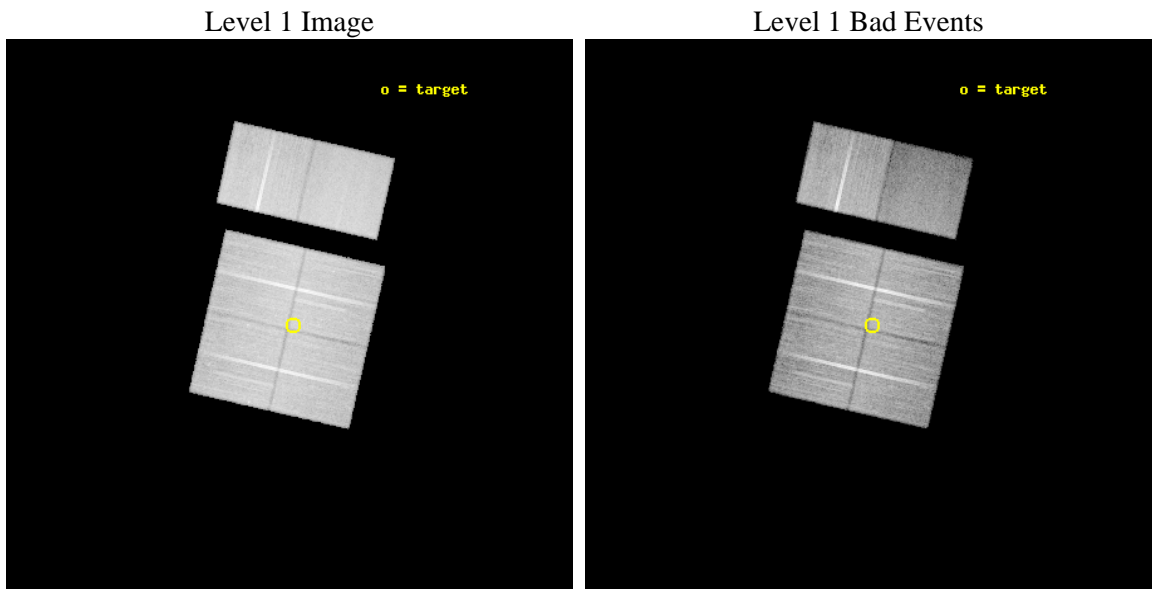
seq_num	200576	Sequence number
obs_id	10944	Observation id
title	The Chandra Cygnus OB2 Survey	Proposal title
observer	Dr. Jeremy Drake	Principal investigator
object	Cygnus OB2	Source name
dtcycle	0	
cycle	P	events from which exps? Prim/Second/Both
ra_targ	307.860294	Observer's specified target RA [deg]
dec_targ	41.522053	Observer's specified target Dec [deg]
ra_nom	307.86959927266	Nominal RA [deg]
dec_nom	41.526114175886	Nominal Dec [deg]
roll_nom	12.902521875091	Nominal Roll [deg]
revision	2	Processing version of data
ontime	28665.558903039	Sum of GTIs [s]
livetime	28302.578335881	Livetime [s]
ontime0	28668.79989326	Sum of GTIs [s]
ontime1	28665.558912933	Sum of GTIs [s]
ontime2	28668.79989326	Sum of GTIs [s]
ontime3	28665.558903039	Sum of GTIs [s]
ontime6	28668.79989326	Sum of GTIs [s]
ontime7	28668.79989326	Sum of GTIs [s]
l2events	214761	Number of level 2 events



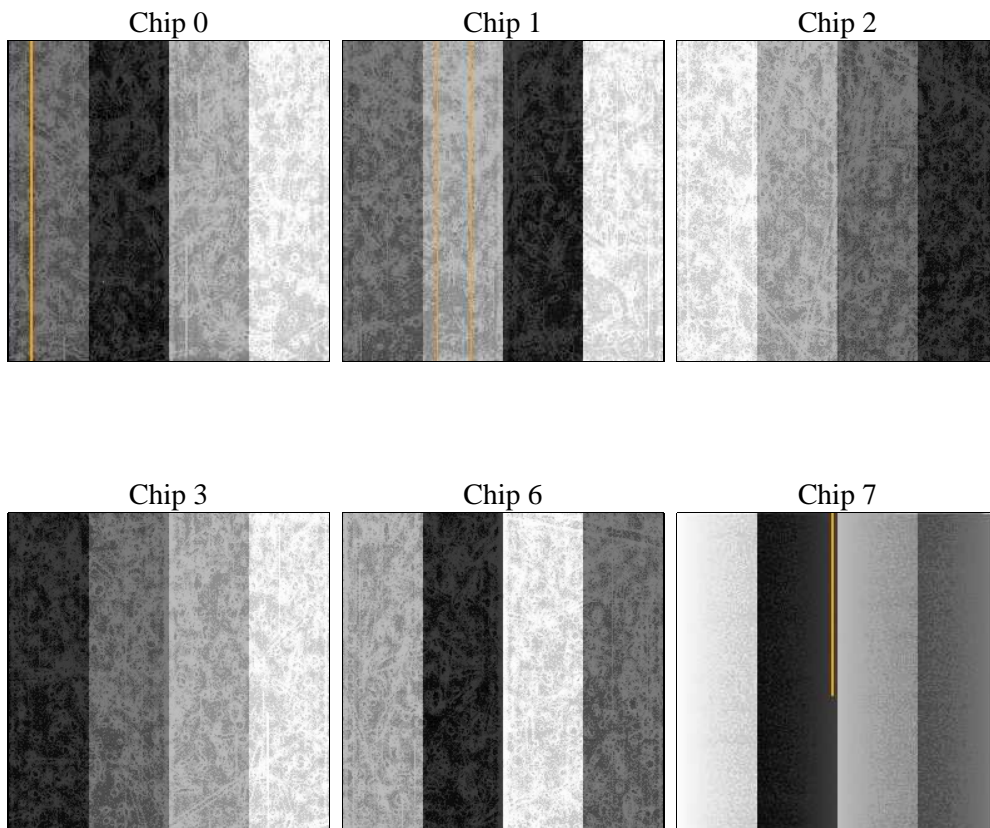
2 OBI

2.1 OBI

2.1.1 Images



2.1.2 Bias



2.1.3 Parameters

obi_num	0	Obi number	sched_exp_time	28496.000000	[s] Scheduled observation exposure time
ascdsver	8.4.5	Processing system revision	ontime	28665.558903039	Sum of GTIs [s]
caldsver	4.4.10	 	ontime0	28668.79989326	Sum of GTIs [s]
date	2012-06-20T14:12:10	Date and time of file creation	ontime1	28665.558912933	Sum of GTIs [s]
revision	2	Processing version of data	ontime2	28668.79989326	Sum of GTIs [s]
			ontime3	28665.558903039	Sum of GTIs [s]
			ontime6	28668.79989326	Sum of GTIs [s]
			ontime7	28668.79989326	Sum of GTIs [s]
			l1events	1336619	Number of level 1 events

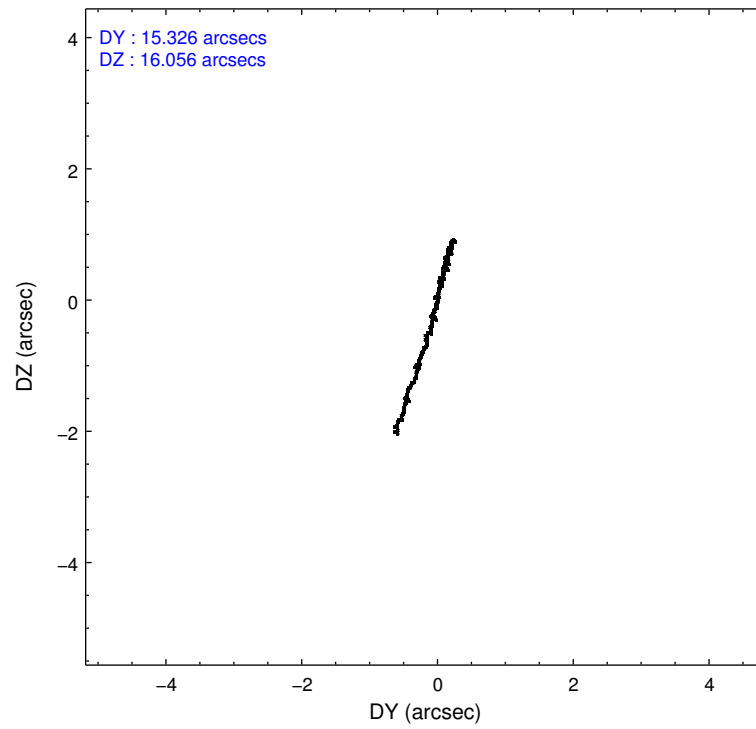
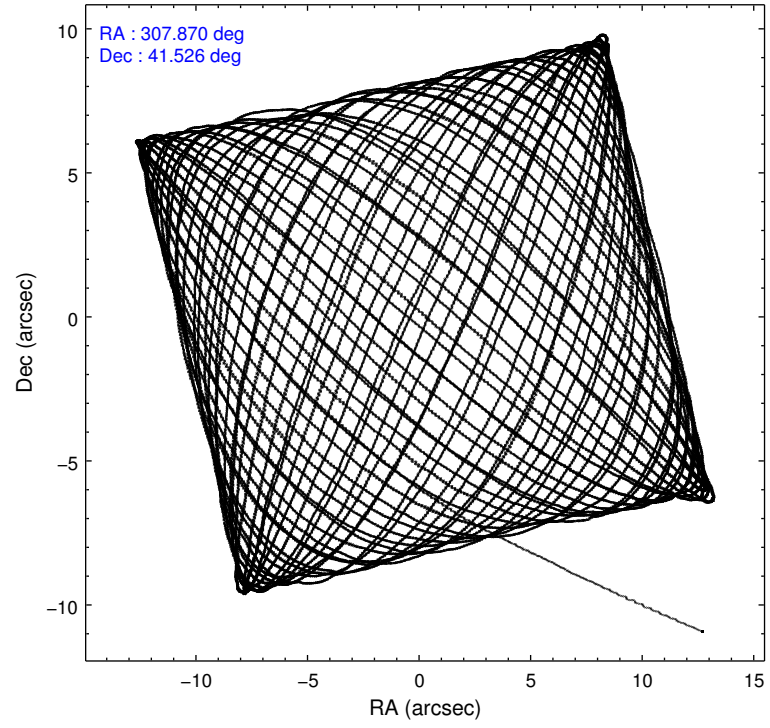
2.1.4 Events

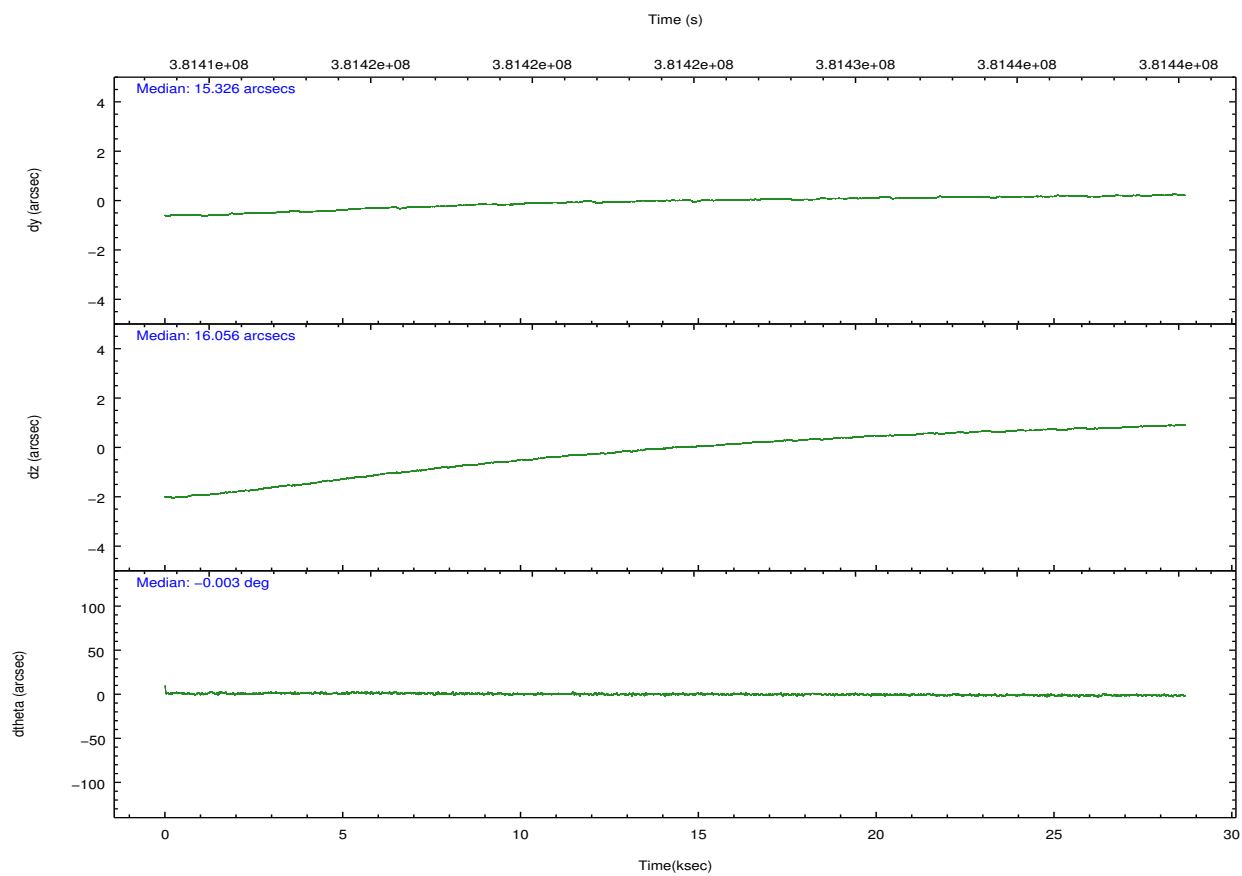
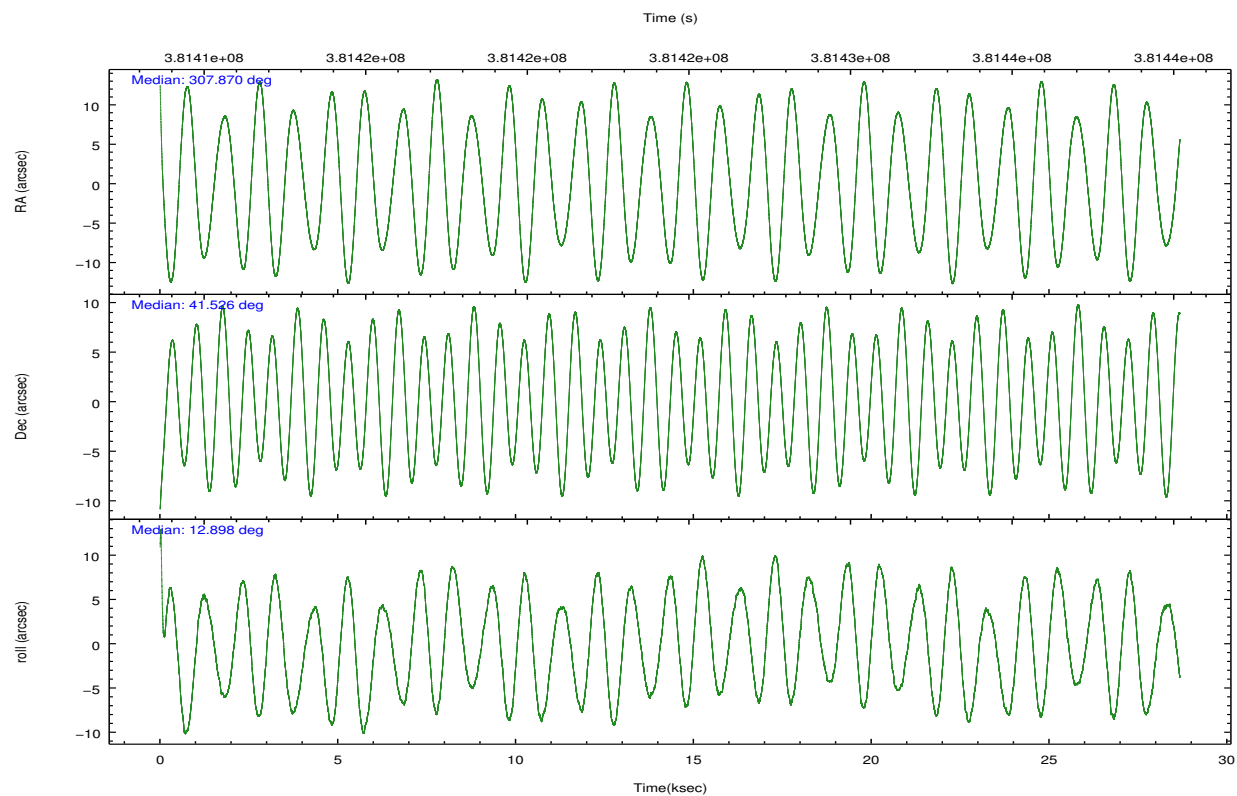
	ccd 0	ccd 1	ccd 2	ccd 3	ccd 6	ccd 7		ccd 0	ccd 1	ccd 2	ccd 3	ccd 6	ccd 7
level 1 events	214145	206853	230582	224512	234001	226526	grade 0 events	12243	10345	10263	9857	9514	11399
rejected events	186090	180613	205440	200442	209144	115539		5%	5%	4%	4%	4%	5%
rejected %	86%	87%	89%	89%	89%	51%	grade 1 events	172	128	144	164	117	399
								0%	0%	0%	0%	0%	0%
							grade 2 events	6454	5763	5907	5128	5591	24096
								3%	2%	2%	2%	2%	10%
							grade 3 events	2698	2699	2419	2537	2546	10115
								1%	1%	1%	1%	1%	4%
							grade 4 events	2485	2707	2473	2476	2482	10092
								1%	1%	1%	1%	1%	4%
							grade 5 events	7120	7763	6822	8117	8309	24303
								3%	3%	2%	3%	3%	10%
							grade 6 events	4340	4892	4228	4228	4880	55939
								2%	2%	1%	1%	2%	24%
							grade 7 events	178633	172556	198326	192005	200562	90183
								83%	83%	86%	85%	85%	39%

2.2 Compared Parameters

Parameter	Planned	Actual	Parameter	Planned	Actual
Instrument	ACIS	ACIS	Obspar format version number	7	7
Detector	ACIS-012367	ACIS-012367	Obspar file type	PREDICTED	ACTUAL
Grating	NONE	NONE	Obspar update status	NONE	UPDATED
Data mode	VFAINT	VFAINT	CCD I0 on	Y	Y
Observation mode	POINTING	POINTING	CCD I1 on	Y	Y
[deg] Pointing RA	307.842837	307.8695992726607	CCD I2 on	Y	Y
[deg] Pointing Dec	41.507318	41.52611417588636	CCD I3 on	Y	Y
[deg] Pointing Roll	12.711567	12.90252187509082	CCD S0 on	N	N
[mm] SIM focus pos	-0.782348	-0.7809083437167272	CCD S1 on	N	N
[mm] SIM defocus	0	0.001439871863259334	CCD S2 on	O2	Y
[mm] SIM translation stage pos	-233.592463	-233.5874344608287	CCD S3 on	O1	Y
[mm] SIM translation stage offset	0	-0.005018542100998502	CCD S4 on	N	N
[s] Observation start time (MET)	381410267.184000	381409108.29924	CCD S5 on	N	N
Observation start date	2010-02-01T11:16:41	2010-02-01T10:58:28	Number of optional ACIS chips dropped	0	0
[s] Observation end time (MET)	381438763.184000	381438896.85075	On-chip summing requested	N	N
Observation end date	2010-02-01T19:11:37	2010-02-01T19:14:56	Subarray requested	NONE	NONE
Read mode	TIMED	TIMED	Alternating exposures requested	N	N
			[s] Primary exposure time	0.000000	3.2

2.3 Aspect



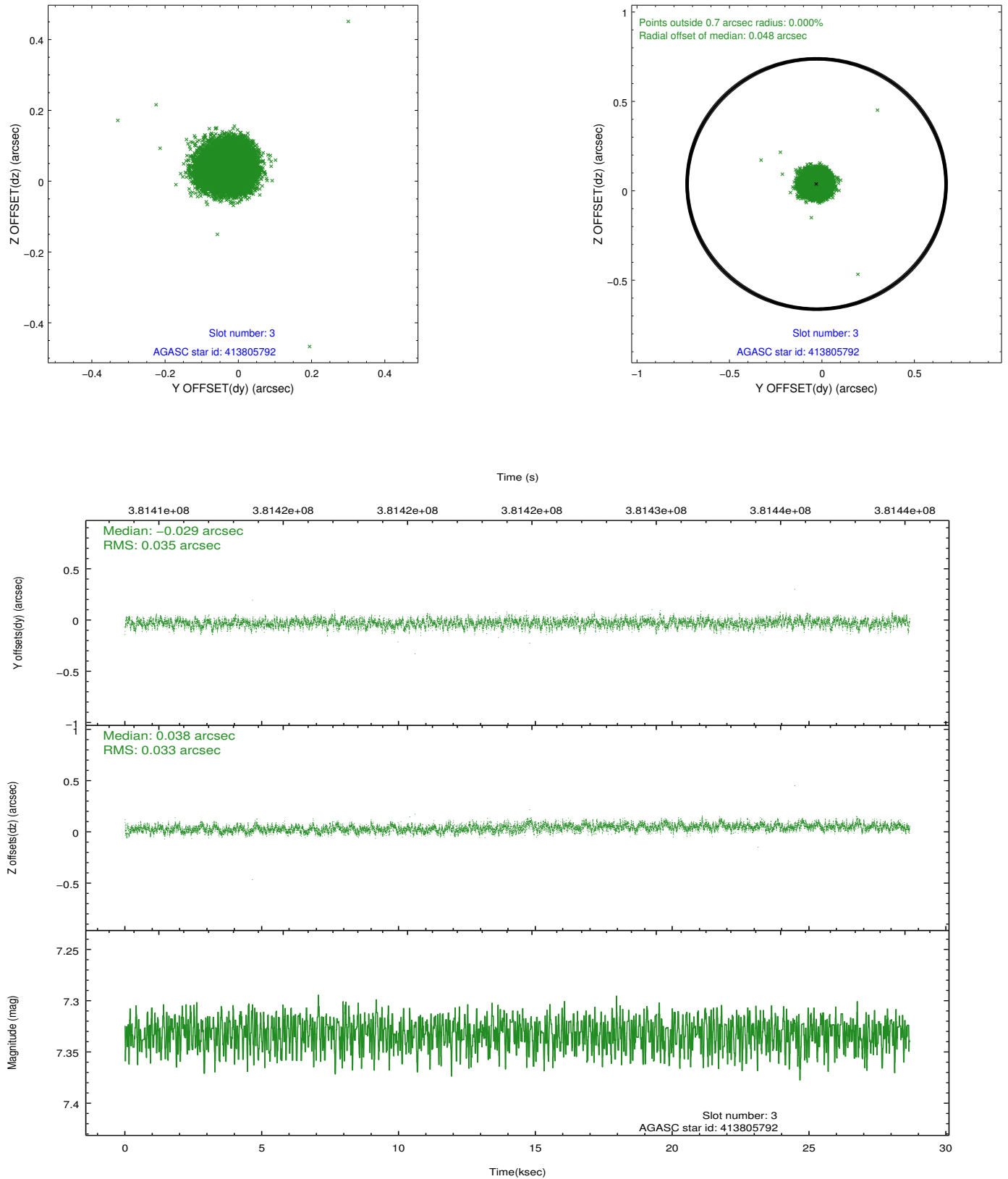


Slot Statistics

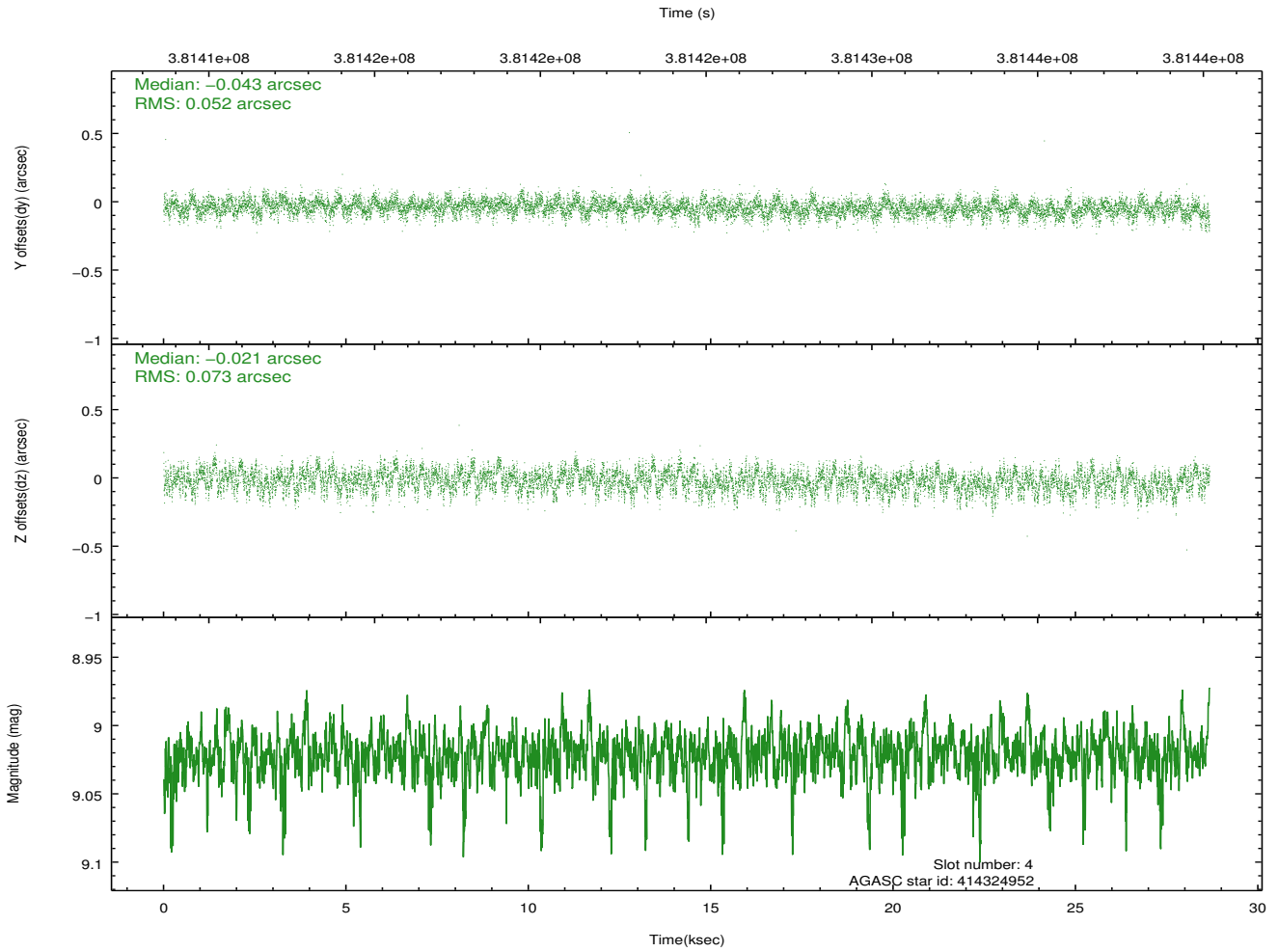
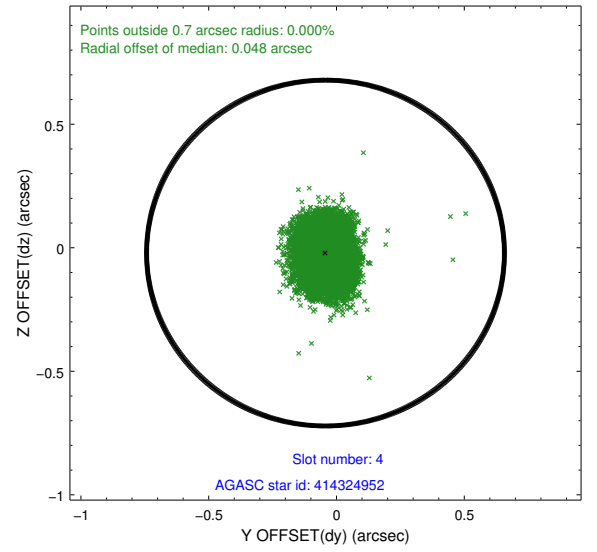
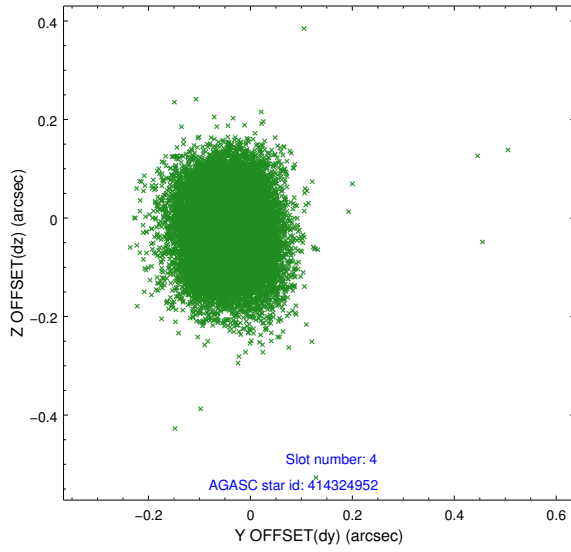
slot	status	id	mag	n_pts	med_dy	med_dz	dr1	dr2	ra	dec	mean_y	mean_z
0	FID	ACIS-I-2	6.96	6993	-0.083	-0.087	0.015	0.028	0.000000	0.000000	-770.03	-845.91
1	FID	ACIS-I-4	6.97	6994	0.149	0.075	0.015	0.036	0.000000	0.000000	2144.19	1060.43
2	FID	ACIS-I-5	7.03	6993	-0.167	0.081	0.021	0.033	0.000000	0.000000	-1823.87	1058.32
3	GUIDE	413805792	7.33	13986	-0.029	0.038	0.052	0.082	307.778748	40.858024	-684.01	-2241.16
4	GUIDE	414324952	9.02	13973	-0.043	-0.021	0.095	0.155	307.998954	42.060645	845.45	1851.80
5	GUIDE	414326136	7.37	13988	0.014	0.015	0.062	0.102	308.256176	41.473642	1062.07	-360.25
6	GUIDE	413674208	8.32	13985	0.042	0.091	0.092	0.144	307.139504	40.901877	-2344.32	-1697.51
7	GUIDE	414200552	8.02	13915	0.017	-0.122	0.091	0.144	307.125971	42.009807	-1470.88	2194.20

2.4 Star Slots

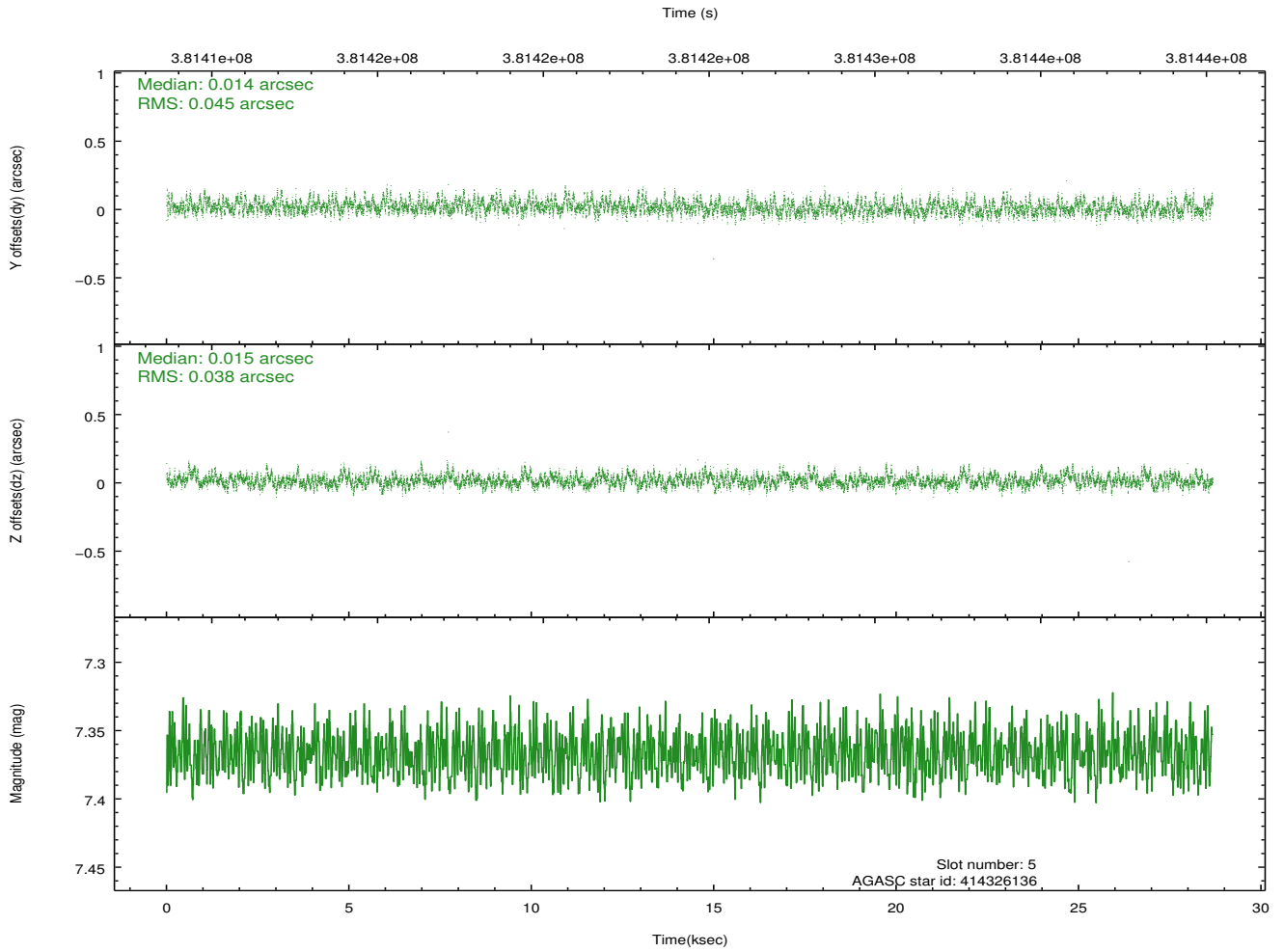
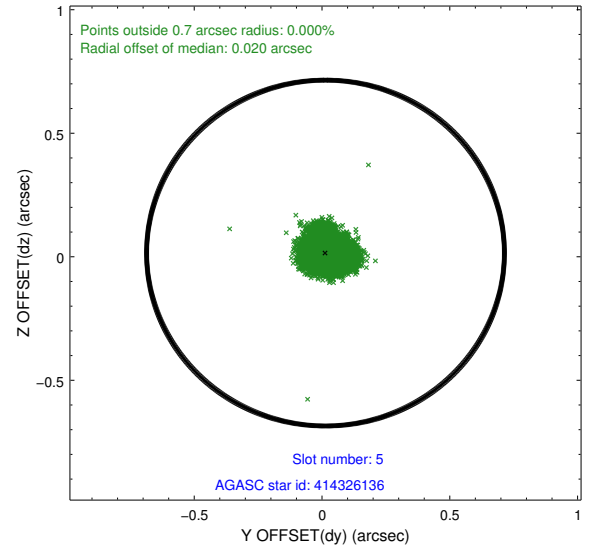
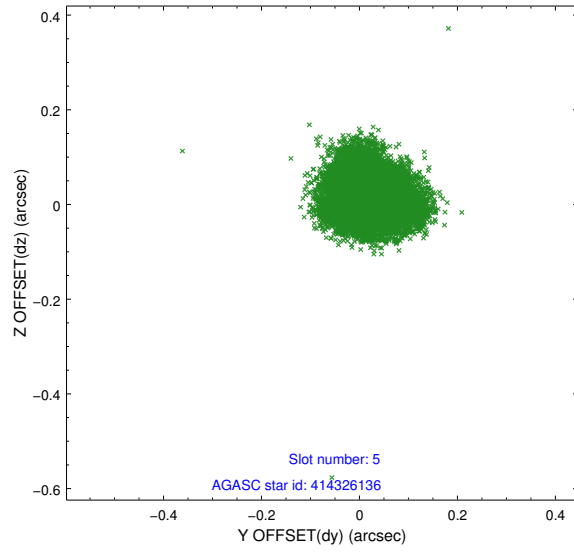
2.4.1 Slot 3



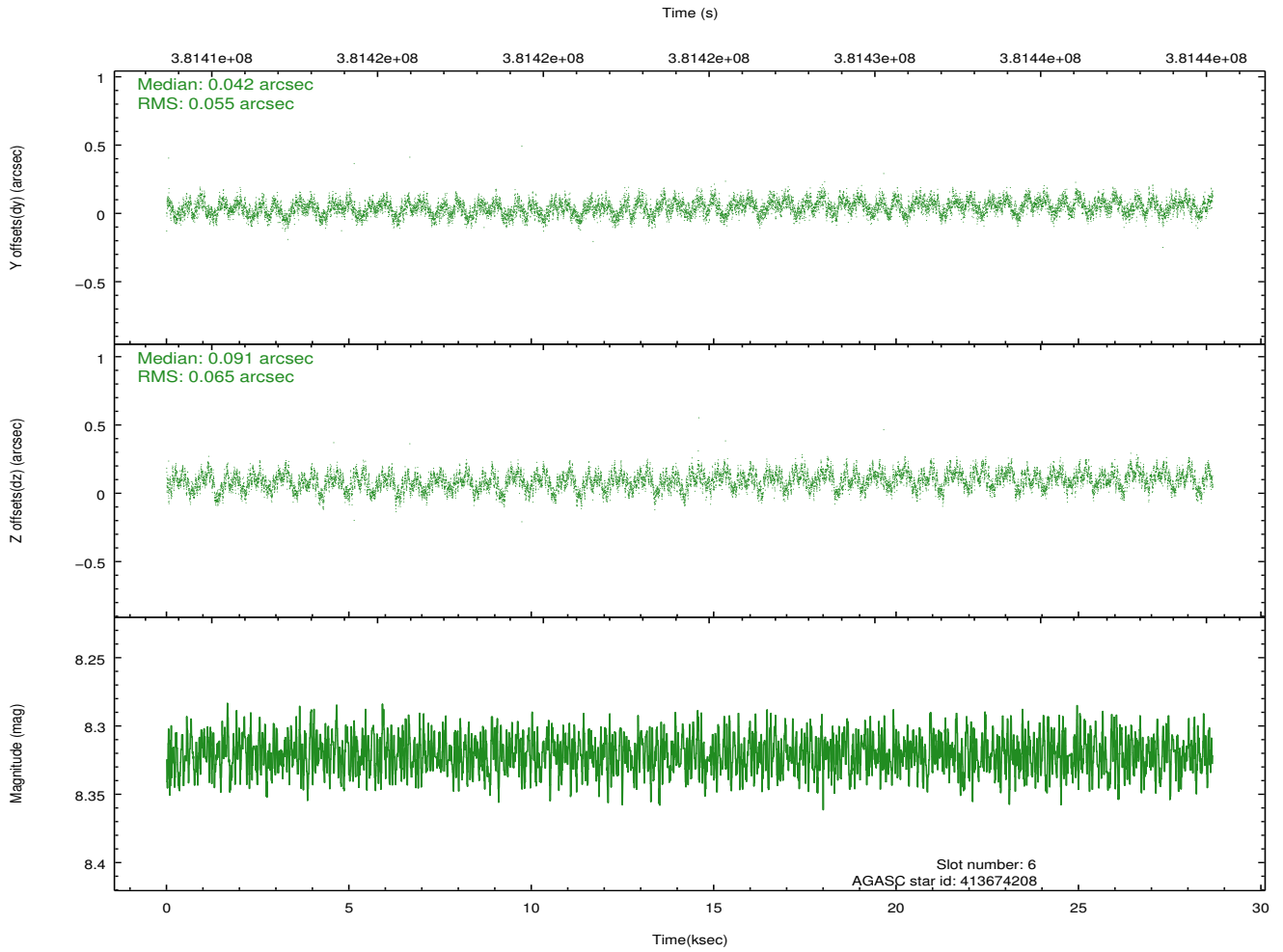
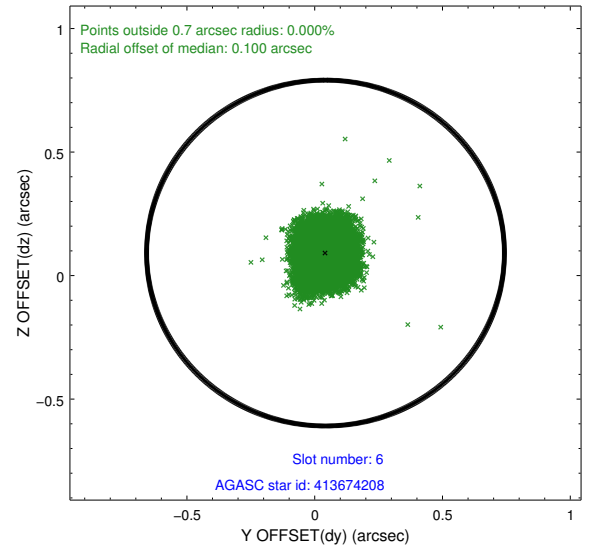
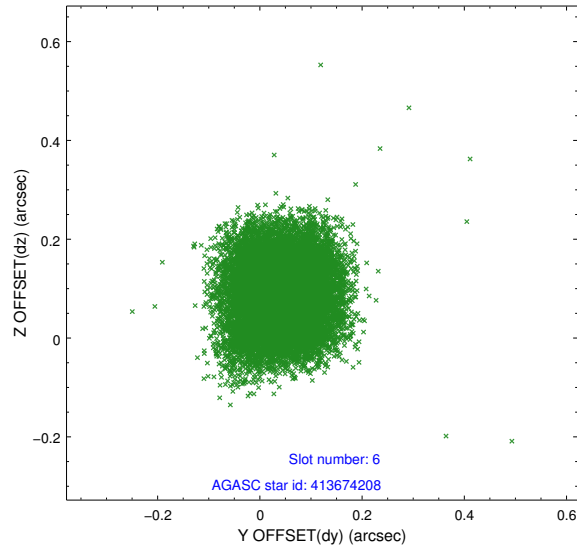
2.4.2 Slot 4



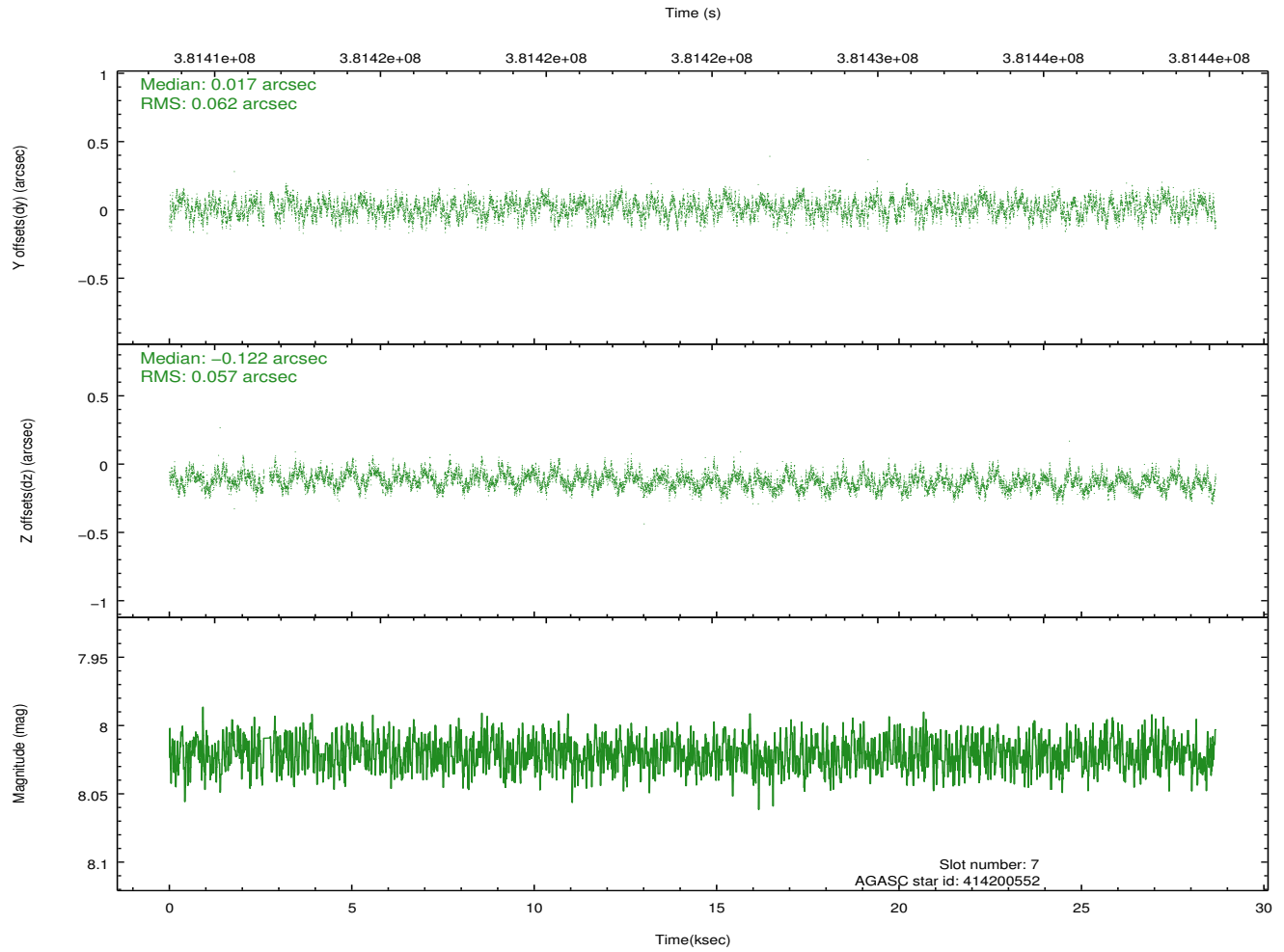
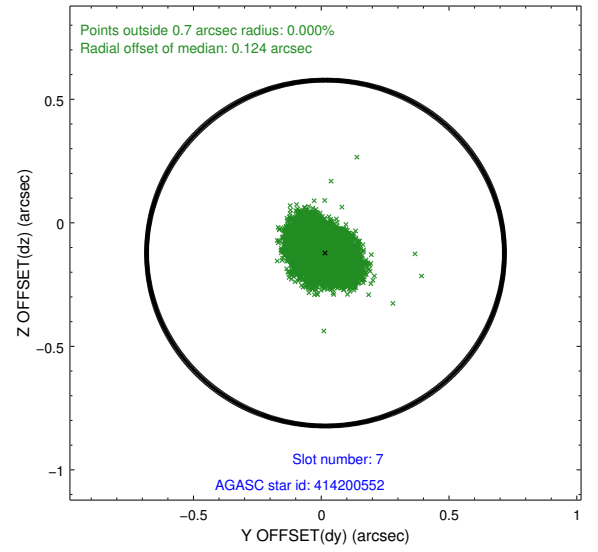
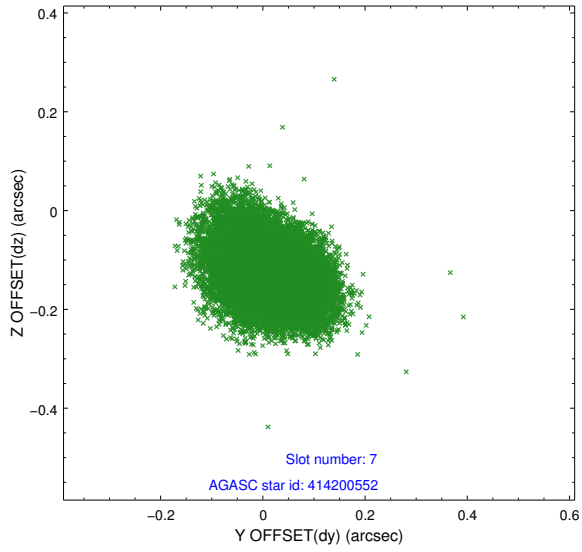
2.4.3 Slot 5



2.4.4 Slot 6

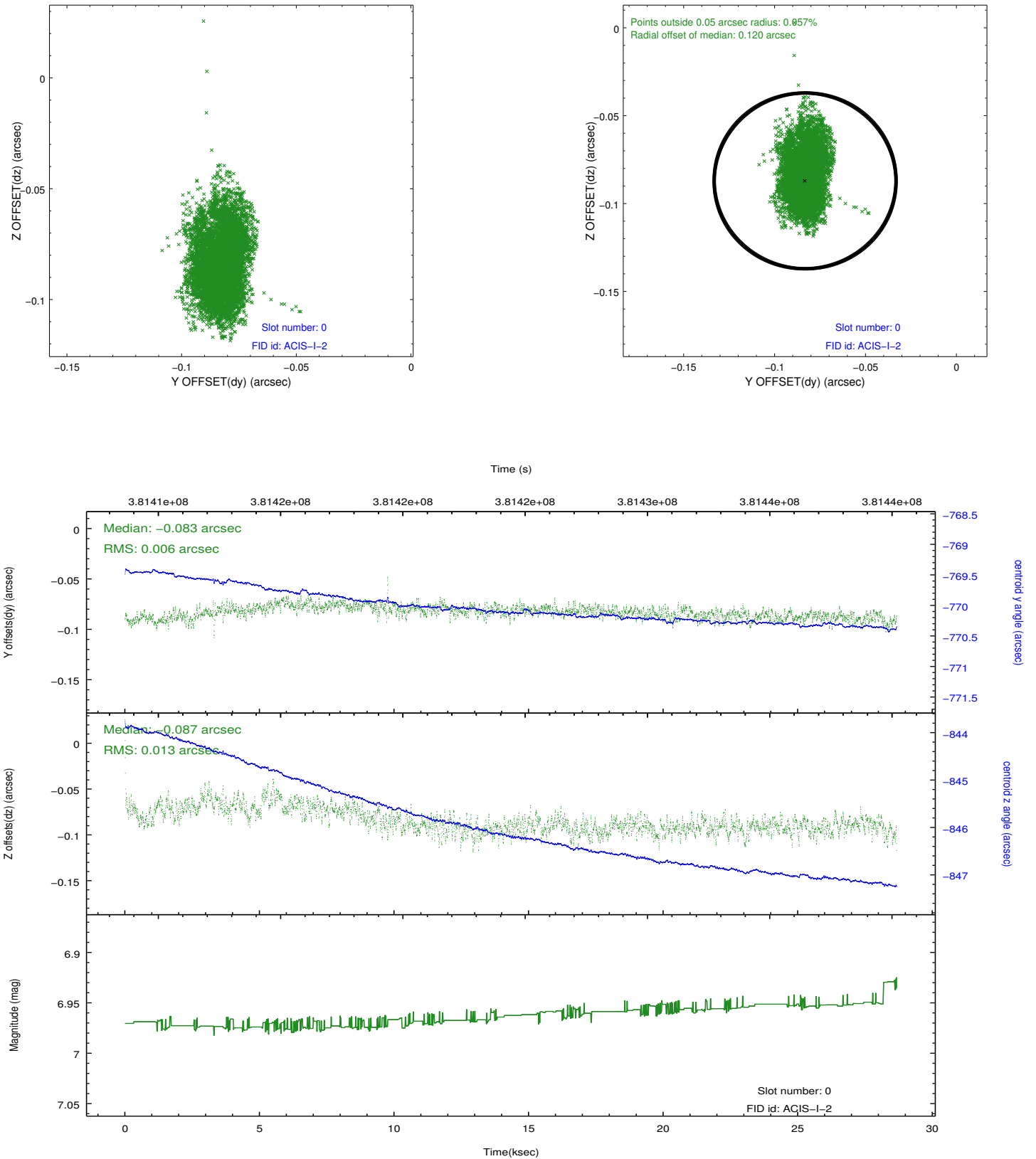


2.4.5 Slot 7

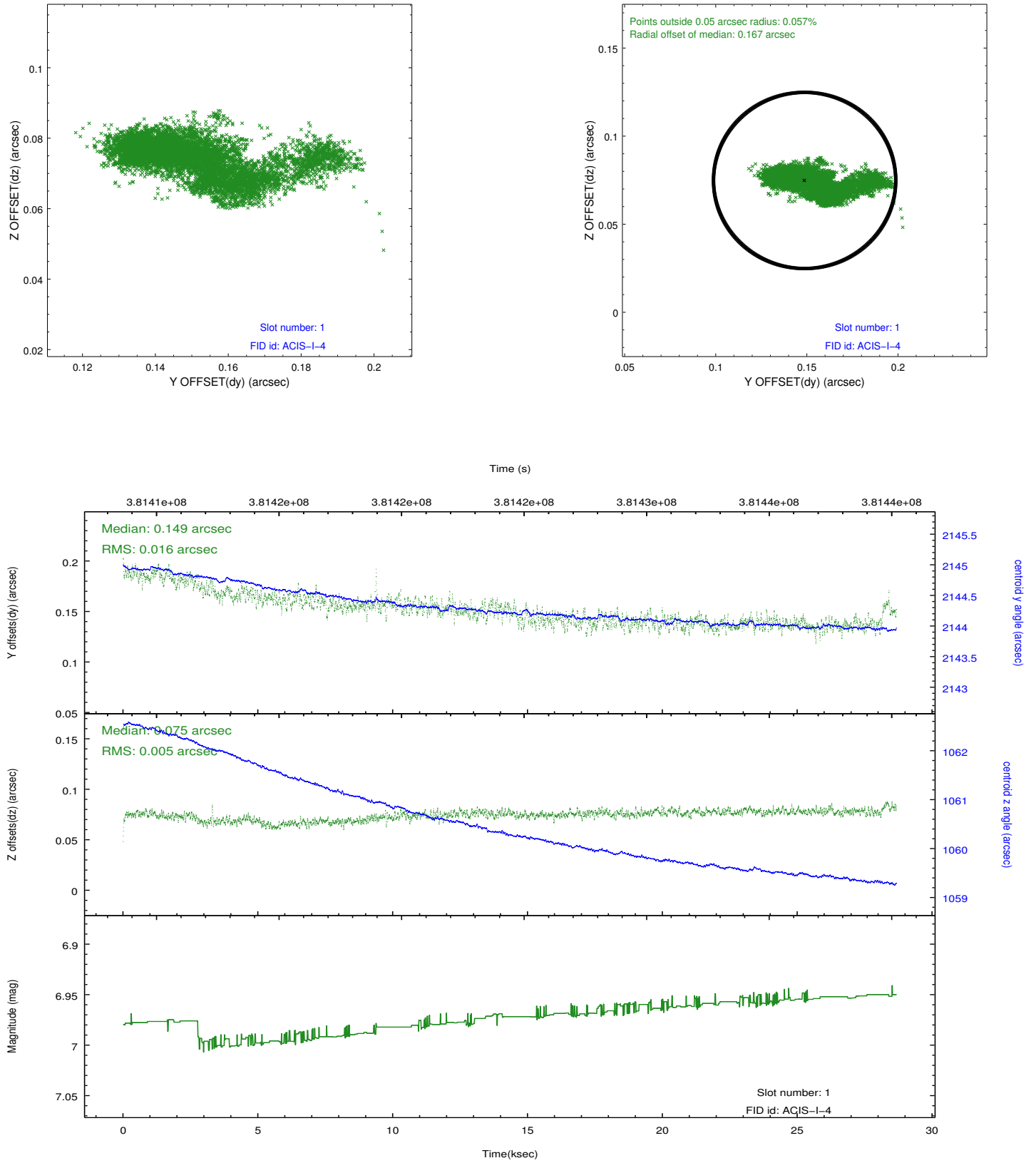


2.5 FID Slots

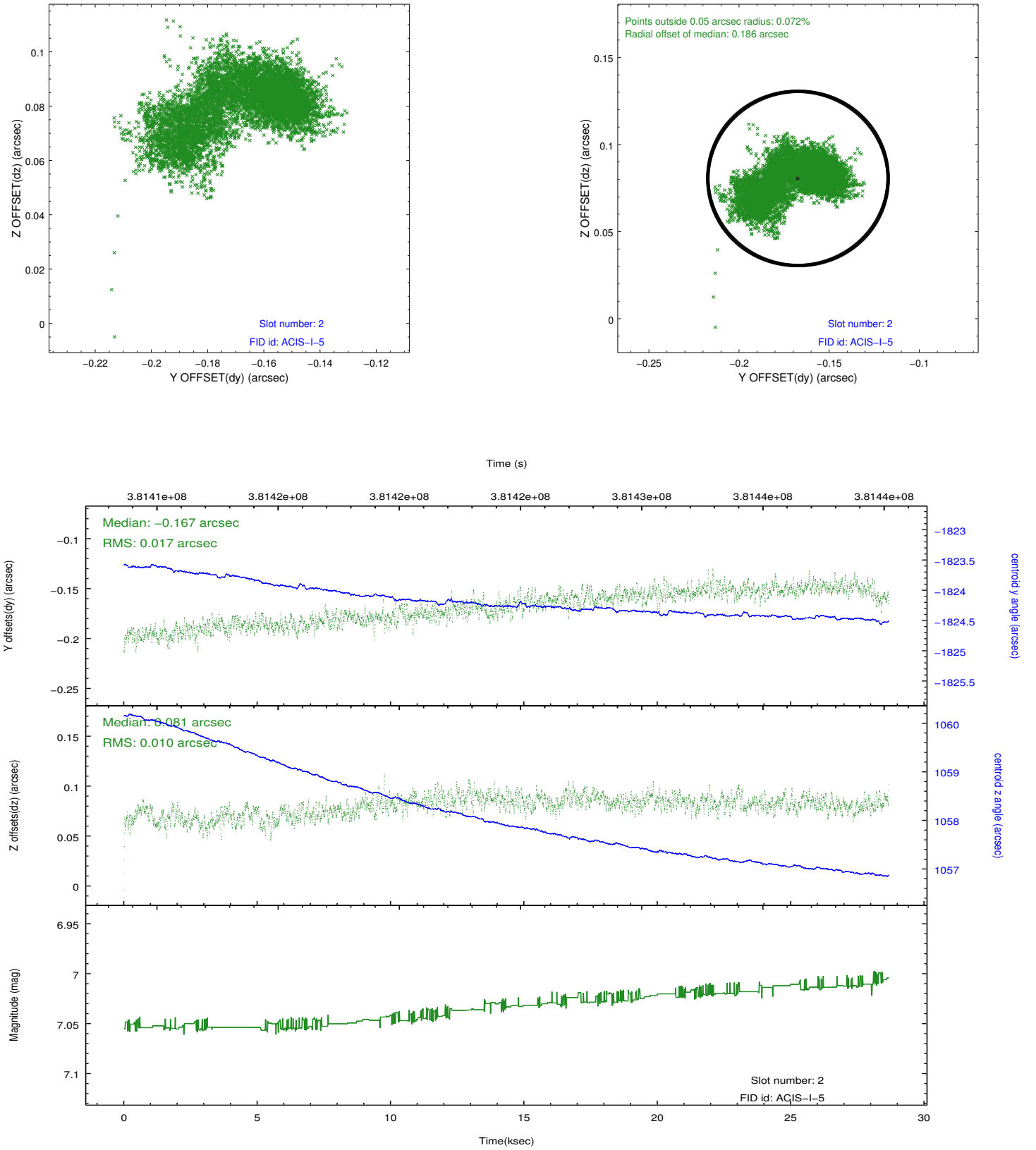
2.5.1 Slot 0



2.5.2 Slot 1



2.5.3 Slot 2



A Summary

A.1 Status

V&V Scientist	Jen Lauer
V&V Date (YYYY-MM-DD)	2012.06.26
V&V Edition	1
V&V Disposition and Status	OK
V&V Charge Time	28.665558903039

A.2 Comments

Preferred roll angle met.