

# V&V Reference Report

## L2 ASCDS Version : 8.4.4

Observation 10755 - L2 Version 2  
Chandra X-Ray Center

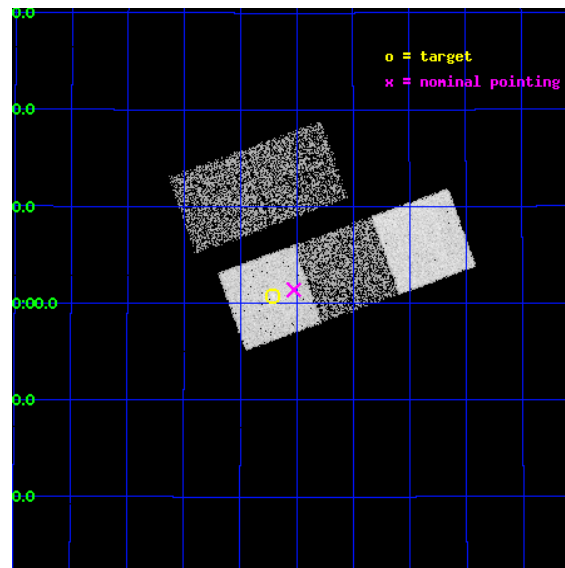
L2 Processing Date : Jun 1 2012

## Contents

<b>1</b>	<b>Front</b>	<b>2</b>
<b>2</b>	<b>OBI</b>	<b>3</b>
2.1	OBI . . . . .	3
2.1.1	Images . . . . .	3
2.1.2	Bias . . . . .	3
2.1.3	Parameters . . . . .	4
2.1.4	Events . . . . .	4
2.2	Compared Parameters . . . . .	5
2.3	Aspect . . . . .	6
2.4	Star Slots . . . . .	9
2.4.1	Slot 3 . . . . .	9
2.4.2	Slot 4 . . . . .	10
2.4.3	Slot 5 . . . . .	11
2.4.4	Slot 6 . . . . .	12
2.4.5	Slot 7 . . . . .	13
2.5	FID Slots . . . . .	14
2.5.1	Slot 0 . . . . .	14
2.5.2	Slot 1 . . . . .	15
2.5.3	Slot 2 . . . . .	16
<b>A</b>	<b>Summary</b>	<b>17</b>
A.1	Status . . . . .	17
A.2	Comments . . . . .	17

# 1 Front

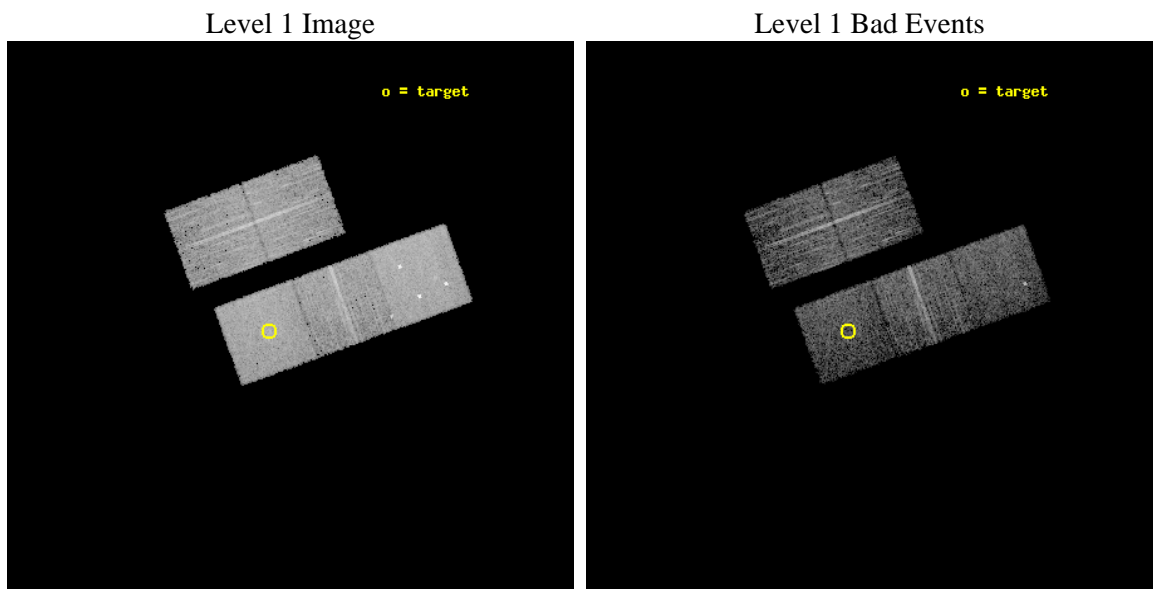
seq_num	900902	Sequence number
obs_id	10755	Observation id
title	The Origin and Evolution of Fossil Groups	Proposal title
observer	Professor Gordon Garmire	Principal investigator
object	SDSS J1007+3800	Source name
dtcycle	0	&#160
cycle	P	events from which exps? Prim/Second/Both
ra_targ	151.927083	Observer's specified target RA [deg]
dec_targ	38.012944	Observer's specified target Dec [deg]
ra_nom	151.88120056249	Nominal RA [deg]
dec_nom	38.023402282813	Nominal Dec [deg]
roll_nom	160.06741644702	Nominal Roll [deg]
revision	2	Processing version of data
ontime	4772.8394093513	Sum of GTIs [s]
livetime	4710.4787487549	Livetime [s]
ontime2	4772.6752691865	Sum of GTIs [s]
ontime3	4772.7162893414	Sum of GTIs [s]
ontime5	4772.798369348	Sum of GTIs [s]
ontime6	4769.6163191199	Sum of GTIs [s]
ontime7	4772.8394093513	Sum of GTIs [s]
l2events	58430	Number of level 2 events



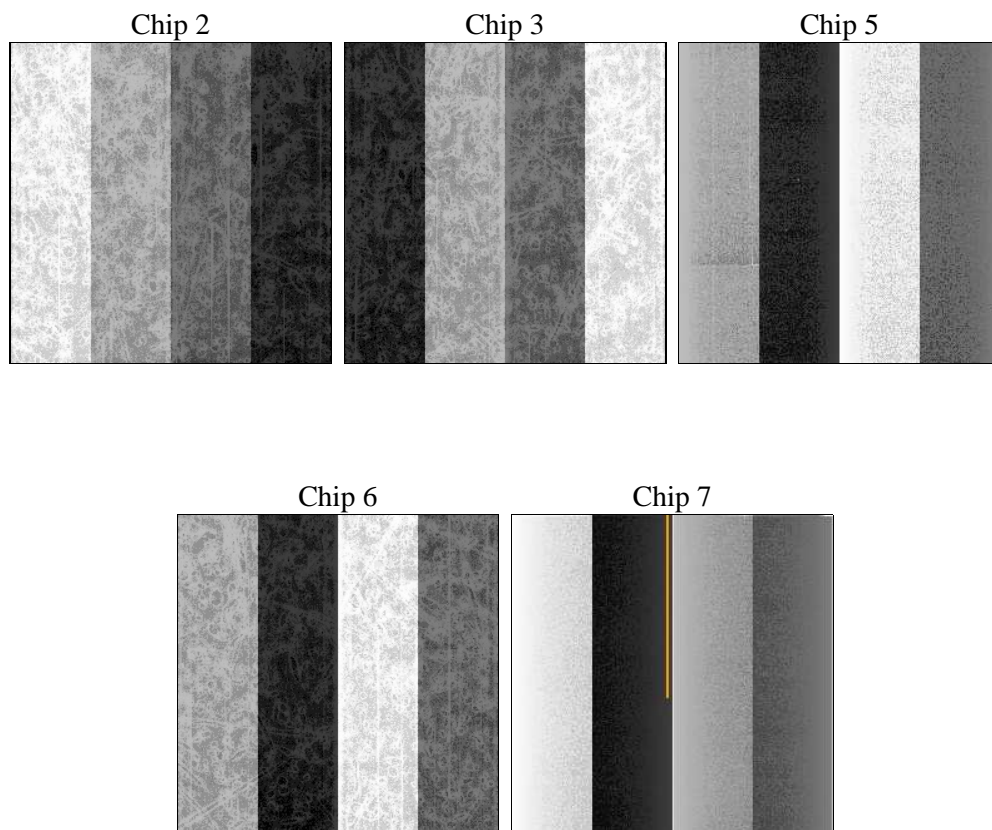
## 2 OBI

### 2.1 OBI

#### 2.1.1 Images



#### 2.1.2 Bias



### 2.1.3 Parameters

obi_num	0	Obi number	sched_exp_time	5000.000000	[s] Scheduled observation exposure time
ascdsver	8.4.4	Processing system revision	ontime	4772.8394093513	Sum of GTIs [s]
caldsver	4.4.9	&#160	ontime2	4772.6752691865	Sum of GTIs [s]
date	2012-06-01T10:07:01	Date and time of file creation	ontime3	4772.7162893414	Sum of GTIs [s]
revision	2	Processing version of data	ontime5	4772.798369348	Sum of GTIs [s]
			ontime6	4769.6163191199	Sum of GTIs [s]
			ontime7	4772.8394093513	Sum of GTIs [s]
			l1events	226241	Number of level 1 events

### 2.1.4 Events

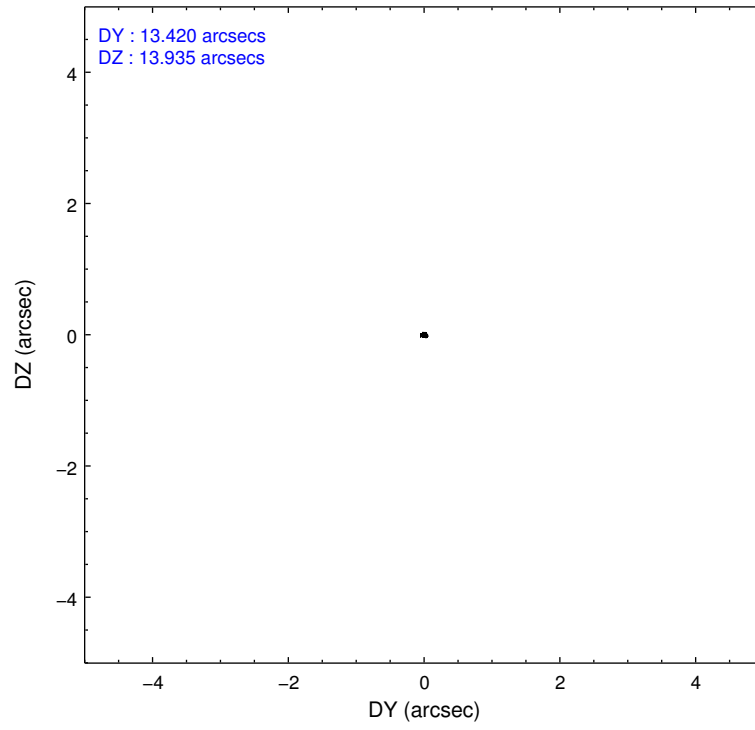
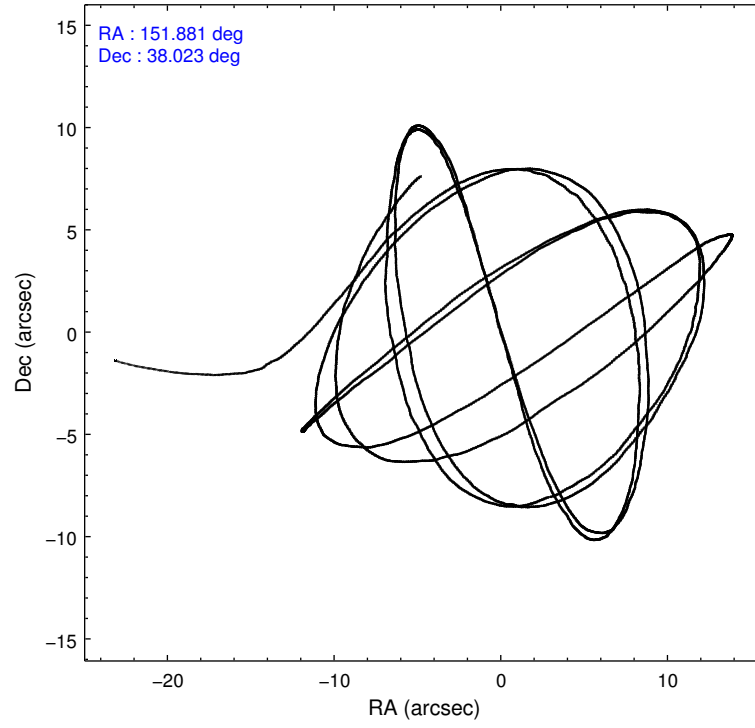
	ccd 2	ccd 3	ccd 5	ccd 6	ccd 7
level 1 events	40175	38370	60202	40319	47175
rejected events	36120	34694	29393	36083	25107
rejected %	89%	90%	48%	89%	53%

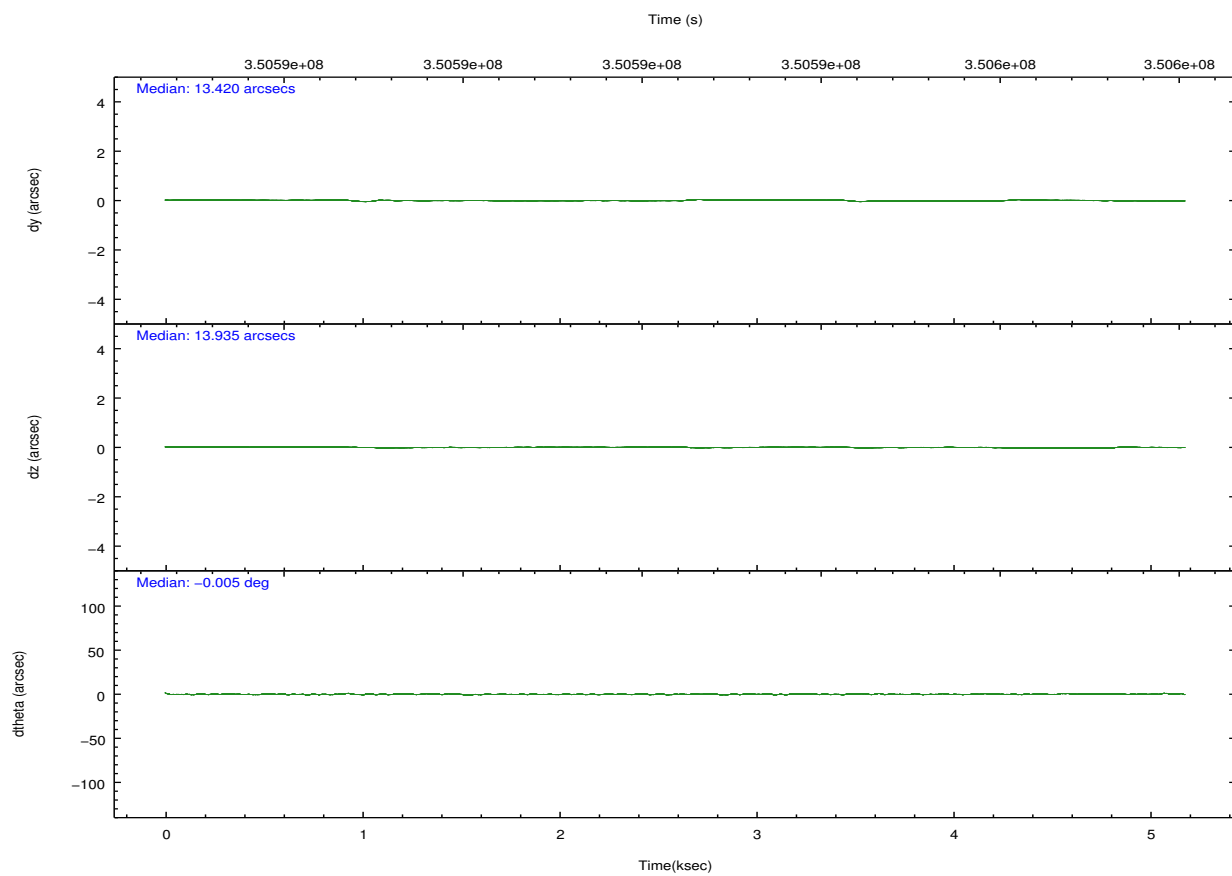
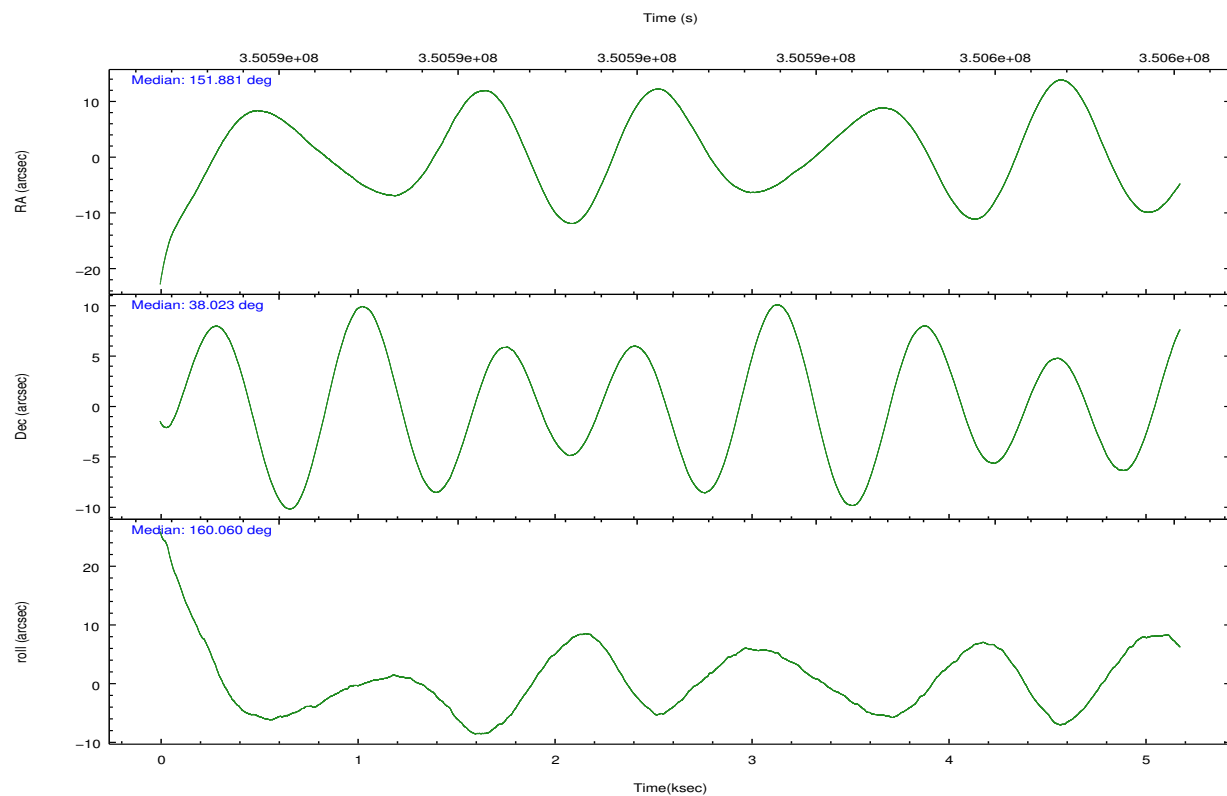
	ccd 2	ccd 3	ccd 5	ccd 6	ccd 7
grade 0 events	1470	1287	4441	1416	2277
	3%	3%	7%	3%	4%
grade 1 events	18	25	134	25	65
	0%	0%	0%	0%	0%
grade 2 events	971	814	9289	962	4466
	2%	2%	15%	2%	9%
grade 3 events	447	425	1178	479	2131
	1%	1%	1%	1%	4%
grade 4 events	443	409	1123	456	1986
	1%	1%	1%	1%	4%
grade 5 events	1373	1594	4652	1625	4858
	3%	4%	7%	4%	10%
grade 6 events	726	746	14796	927	11225
	1%	1%	24%	2%	23%
grade 7 events	34727	33070	24589	34429	20167
	86%	86%	40%	85%	42%

## 2.2 Compared Parameters

Parameter	Planned	Actual	Parameter	Planned	Actual
Instrument	ACIS	ACIS	Obspar format version number	7	7
Detector	ACIS-23567	ACIS-23567	Obspar file type	PREDICTED	ACTUAL
Grating	NONE	NONE	Obspar update status	NONE	UPDATED
Data mode	VFAINT	VFAINT	CCD I0 on	N	N
Observation mode	POINTING	POINTING	CCD I1 on	N	N
[deg] Pointing RA	151.915415	151.8812005624898	CCD I2 on	O1	Y
[deg] Pointing Dec	38.028552	38.02340228281334	CCD I3 on	O2	Y
[deg] Pointing Roll	159.889709	160.067416447016	CCD S0 on	N	N
[mm] SIM focus pos	-0.684267	-0.6828225247311905	CCD S1 on	Y	Y
[mm] SIM defocus	0	0.001444936568705701	CCD S2 on	Y	Y
[mm] SIM translation stage pos	-190.132523	-190.1400660498719	CCD S3 on	Y	Y
[mm] SIM translation stage offset	0	0.00754346686406393	CCD S4 on	N	N
[s] Observation start time (MET)	350590765.184000	350589617.90523	CCD S5 on	N	N
Observation start date	2009-02-09T18:18:19	2009-02-09T18:00:17	Number of optional ACIS chips dropped	0	0
[s] Observation end time (MET)	350595765.184000	350596511.03057	On-chip summing requested	N	N
Observation end date	2009-02-09T19:41:39	2009-02-09T19:55:11	Subarray requested	NONE	NONE
Read mode	TIMED	TIMED	Alternating exposures requested	N	N
			[s] Primary exposure time	0.000000	3.1

## 2.3 Aspect



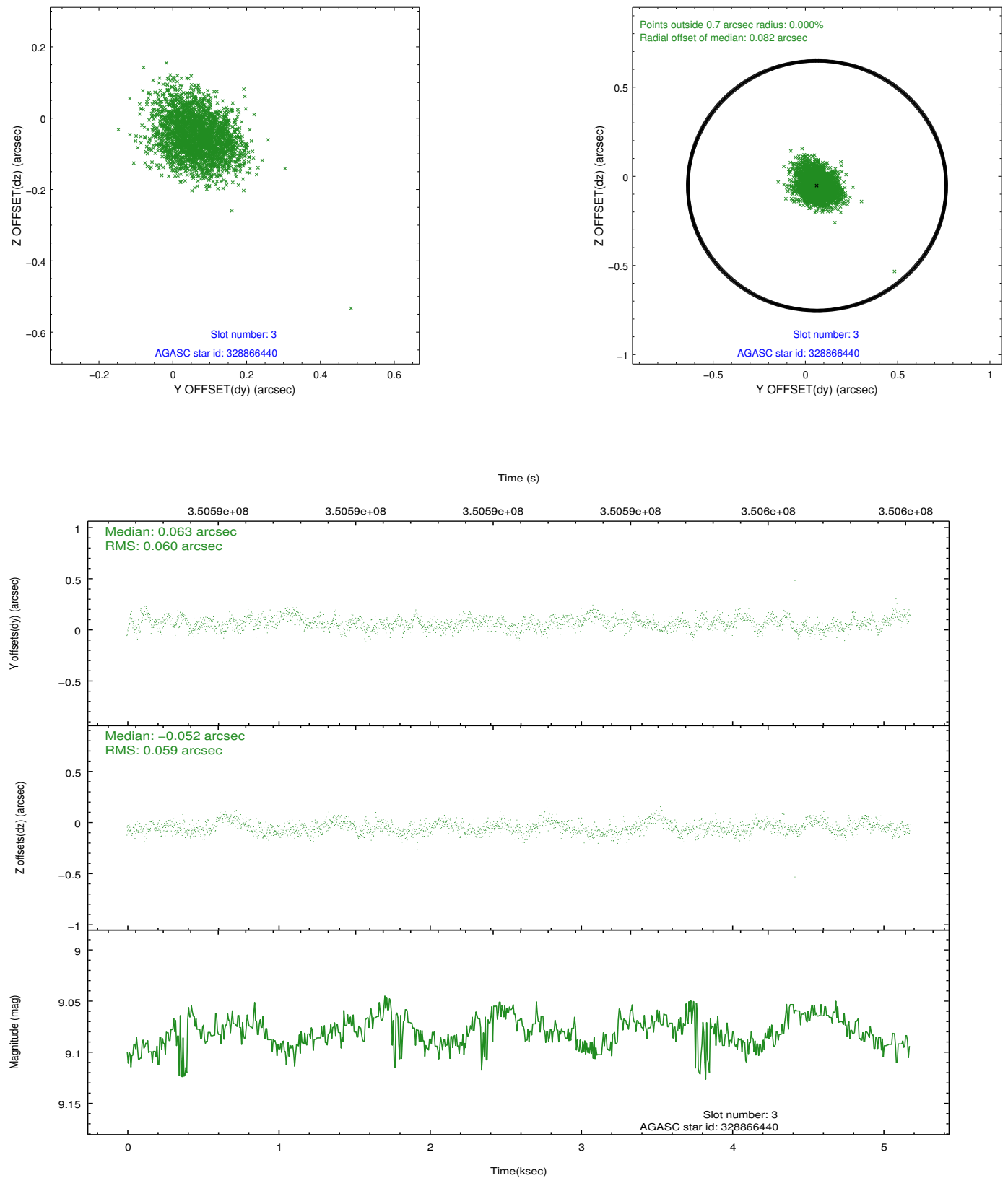


### Slot Statistics

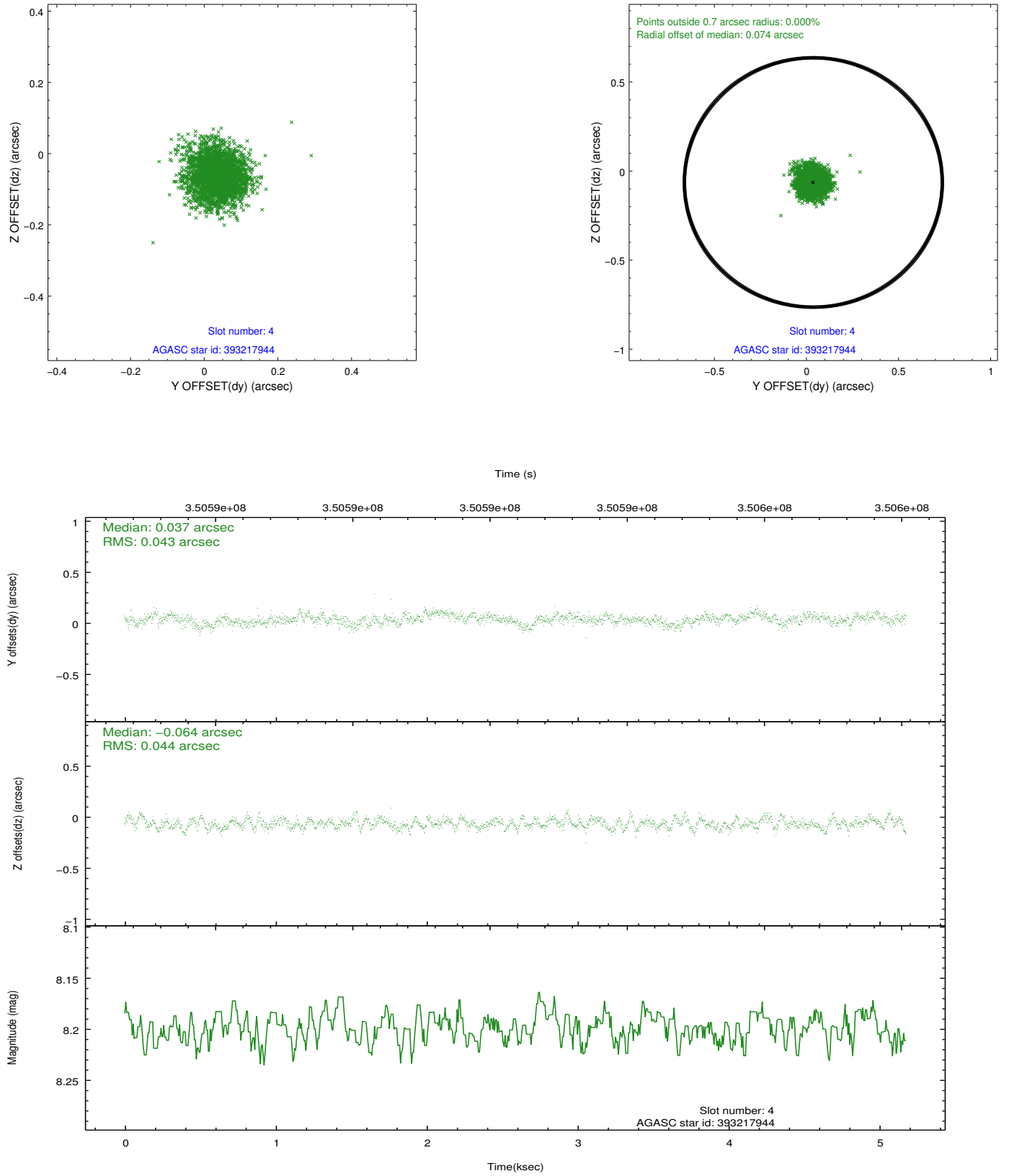
slot	status	id	mag	n_pts	med_dy	med_dz	dr1	dr2	ra	dec	mean_y	mean_z
0	FID	ACIS-S-1	7.02	1263	0.052	-0.000	0.007	0.011	0.000000	0.000000	929.73	-1730.92
1	FID	ACIS-S-4	7.02	1263	0.115	-0.020	0.006	0.010	0.000000	0.000000	2147.85	172.01
2	FID	ACIS-S-5	7.05	1263	-0.194	0.033	0.006	0.010	0.000000	0.000000	-1817.89	166.99
3	GUIDE	328866440	9.08	2527	0.063	-0.052	0.089	0.142	152.435459	37.382942	-2195.13	1667.02
4	GUIDE	393217944	8.20	2524	0.037	-0.064	0.065	0.105	151.840010	38.293202	527.81	-819.50
5	GUIDE	393218944	8.46	2526	-0.079	-0.117	0.074	0.114	151.754365	37.548952	-162.24	1778.79
6	GUIDE	393221888	8.75	2527	0.030	0.006	0.095	0.155	151.904468	38.647979	797.08	-2081.39
7	GUIDE	393223048	6.99	2526	-0.049	0.220	0.056	0.090	152.330657	38.430680	-600.83	-1765.02

## 2.4 Star Slots

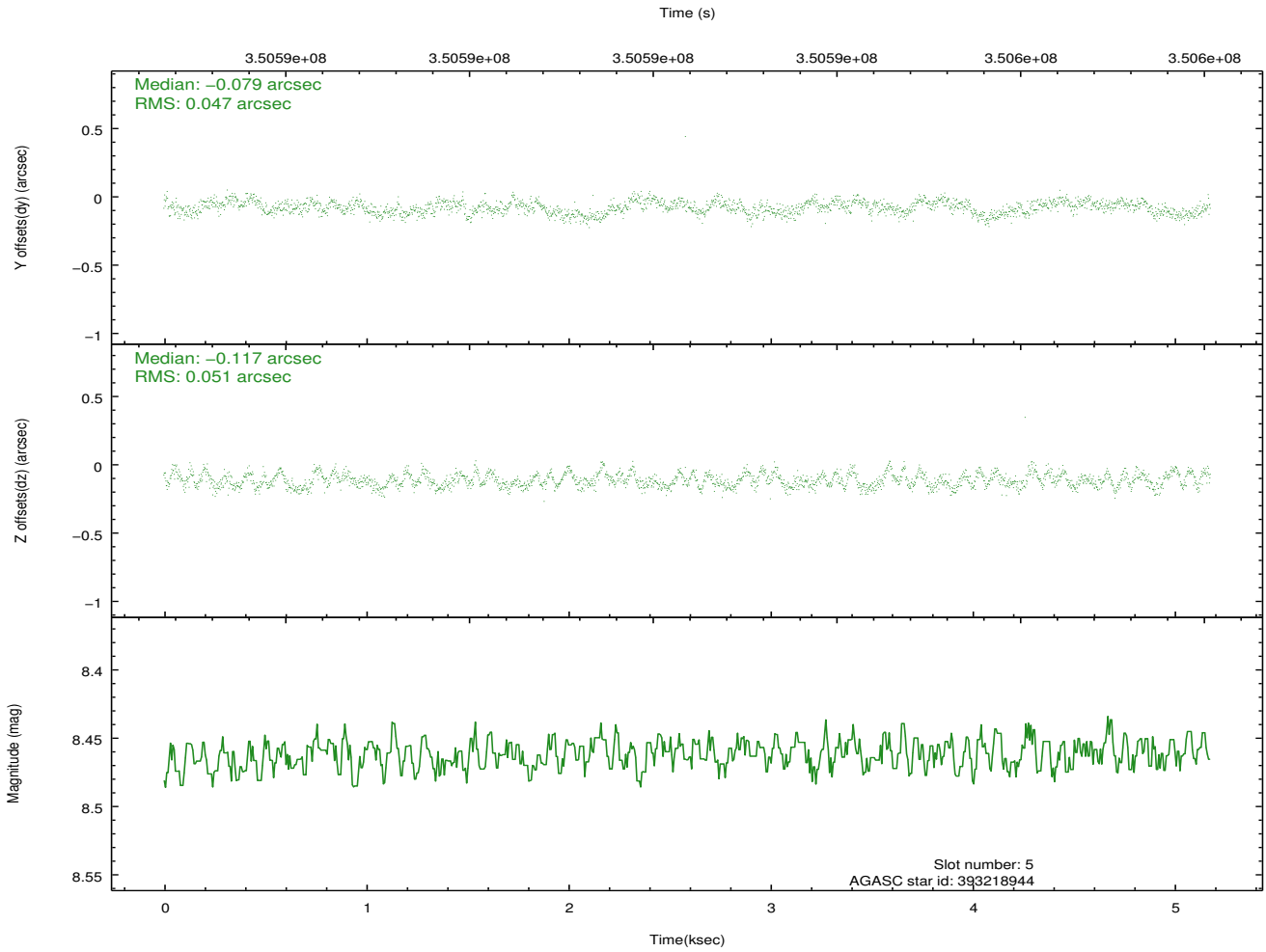
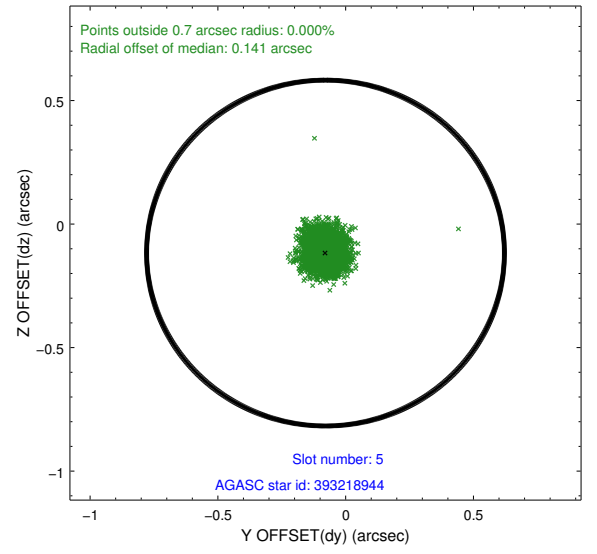
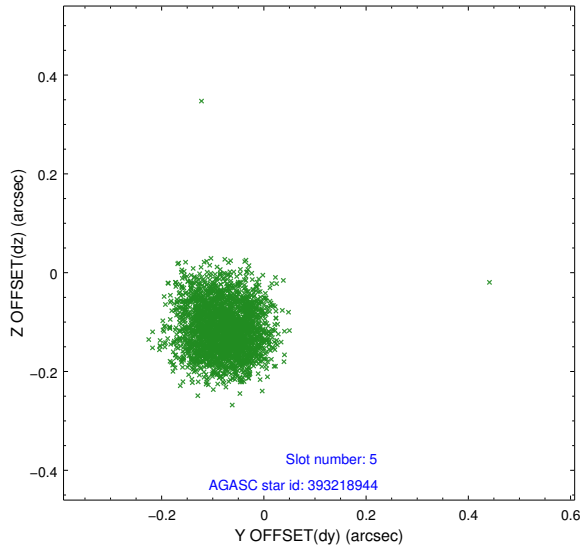
### 2.4.1 Slot 3



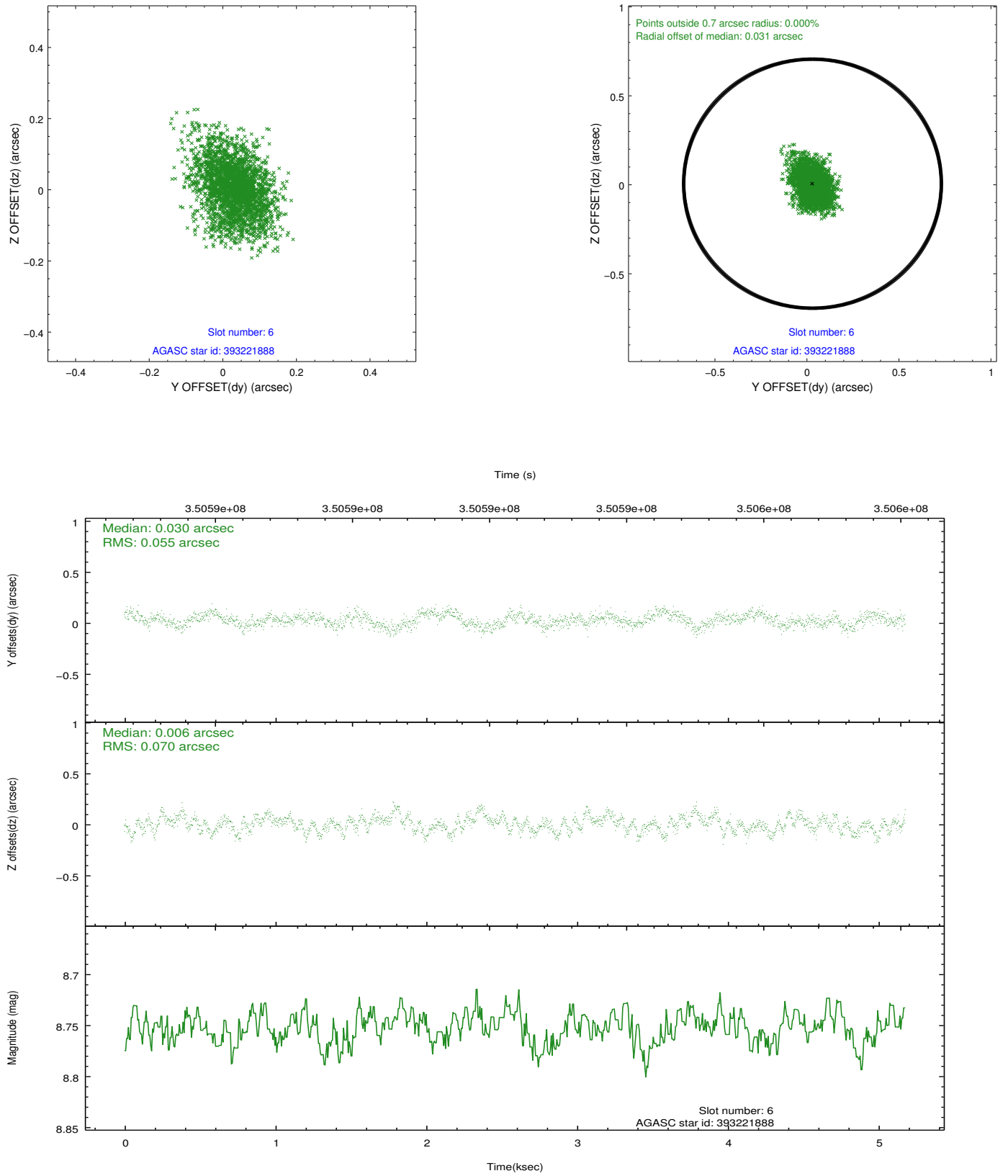
## 2.4.2 Slot 4



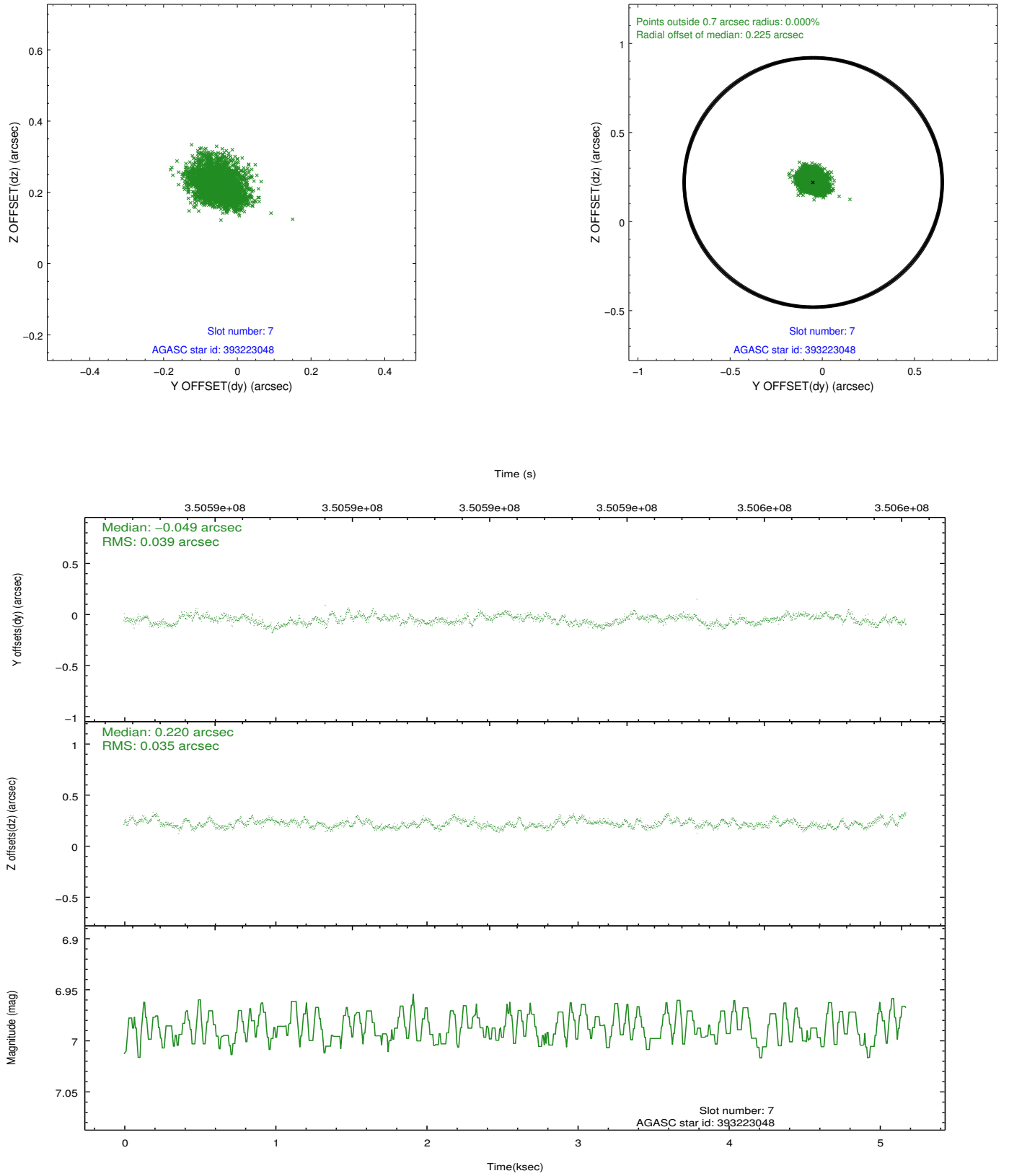
### 2.4.3 Slot 5



## 2.4.4 Slot 6

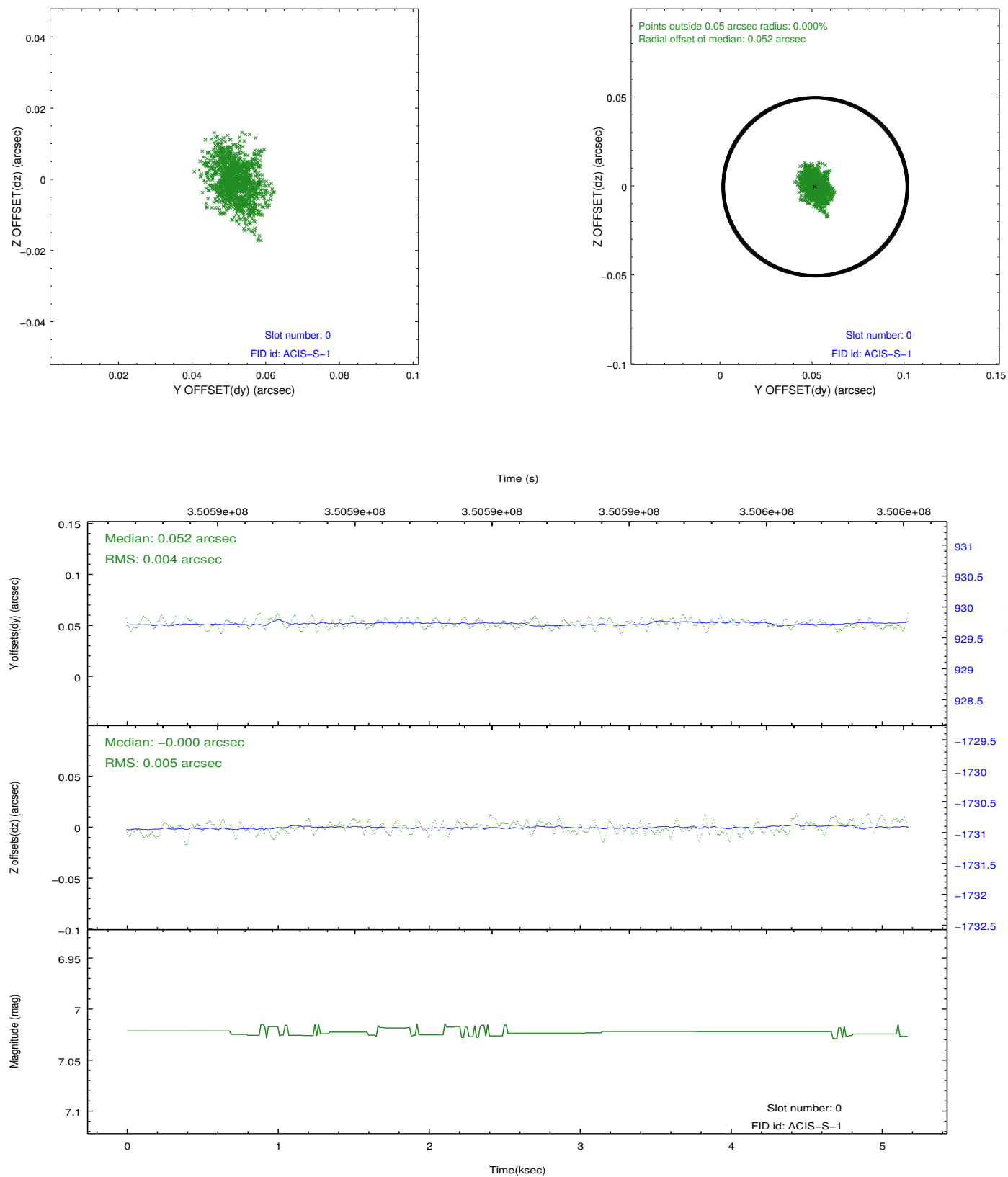


## 2.4.5 Slot 7

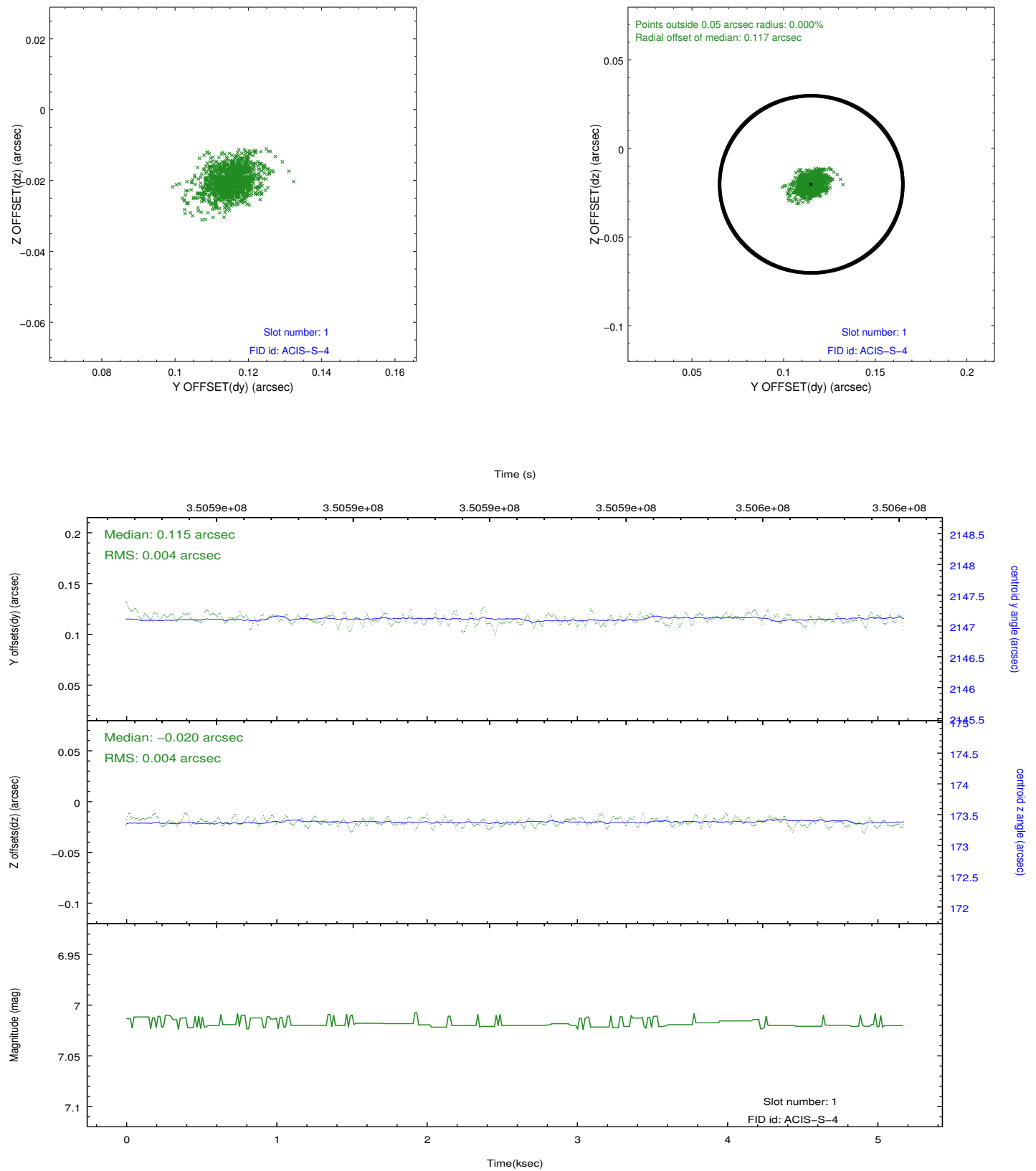


## 2.5 FID Slots

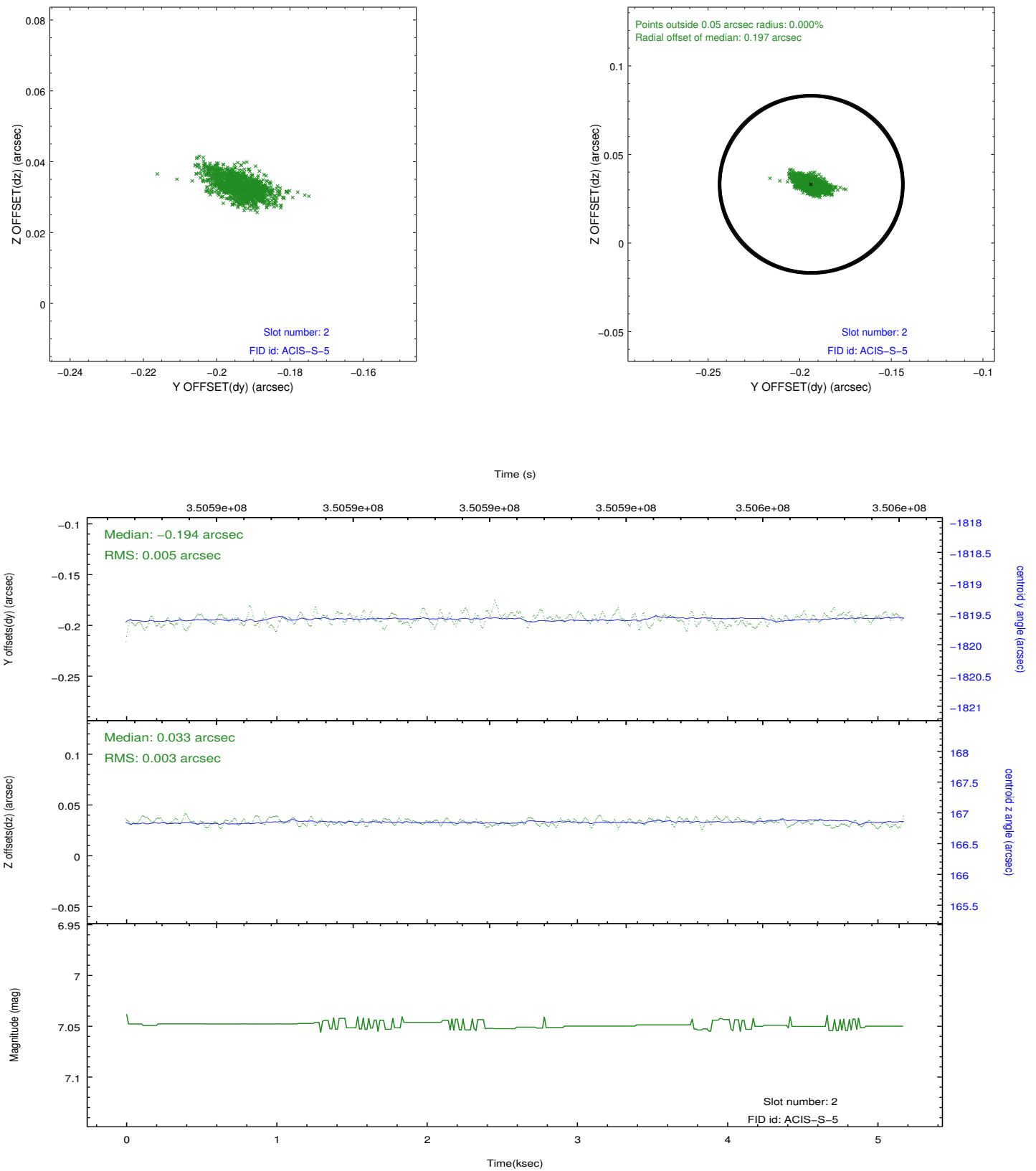
### 2.5.1 Slot 0



## 2.5.2 Slot 1



### 2.5.3 Slot 2



## A Summary

### A.1 Status

V&V Scientist	Beth Sundheim
V&V Date (YYYY-MM-DD)	2012.06.06
V&V Edition	1
V&V Disposition and Status	OK
V&V Charge Time	4.77400003

### A.2 Comments