

V&V Reference Report

L2 ASCDS Version : 8.4.5

Observation 10753 - L2 Version 2
Chandra X-Ray Center

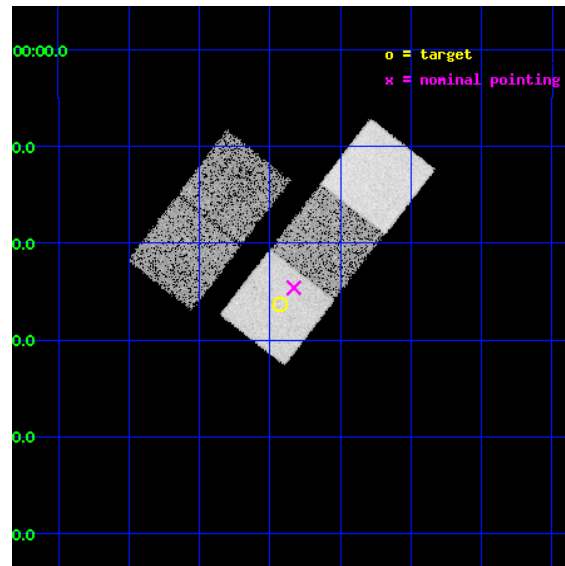
L2 Processing Date : Jun 8 2012

Contents

1	Front	2
2	OBI	3
2.1	OBI	3
2.1.1	Images	3
2.1.2	Bias	3
2.1.3	Parameters	4
2.1.4	Events	4
2.2	Compared Parameters	5
2.3	Aspect	6
2.4	Star Slots	9
2.4.1	Slot 3	9
2.4.2	Slot 4	10
2.4.3	Slot 5	11
2.4.4	Slot 6	12
2.4.5	Slot 7	13
2.5	FID Slots	14
2.5.1	Slot 0	14
2.5.2	Slot 1	15
2.5.3	Slot 2	16
A	Summary	17
A.1	Status	17
A.2	Comments	17

1 Front

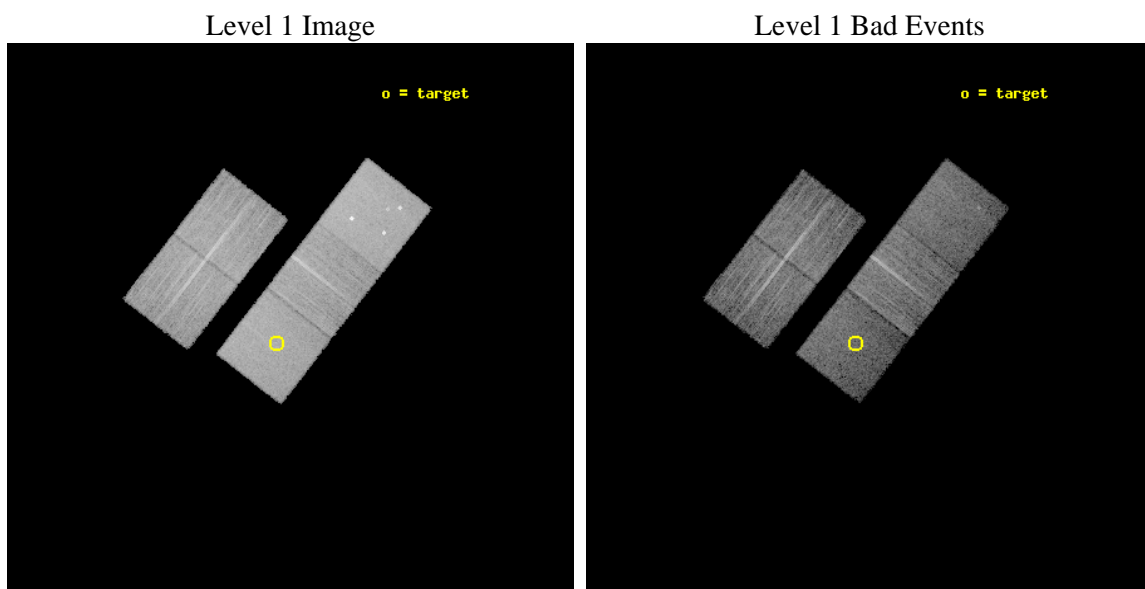
seq_num	900900	Sequence number
obs_id	10753	Observation id
title	The Origin and Evolution of Fossil Groups	Proposal title
observer	Professor Gordon Garmire	Principal investigator
object	SDSS J0133-1026	Source name
dtcycle	0	
cycle	P	events from which exps? Prim/Second/Both
ra_targ	23.357917	Observer's specified target RA [deg]
dec_targ	-10.4385	Observer's specified target Dec [deg]
ra_nom	23.332600759469	Nominal RA [deg]
dec_nom	-10.410396869744	Nominal Dec [deg]
roll_nom	127.85168805355	Nominal Roll [deg]
revision	2	Processing version of data
ontime	10140.100077987	Sum of GTIs [s]
livetime	10007.612205435	Livetime [s]
ontime2	10140.100077987	Sum of GTIs [s]
ontime3	10140.100077987	Sum of GTIs [s]
ontime5	10140.100077987	Sum of GTIs [s]
ontime6	10136.959137559	Sum of GTIs [s]
ontime7	10140.100077987	Sum of GTIs [s]
l2events	124947	Number of level 2 events



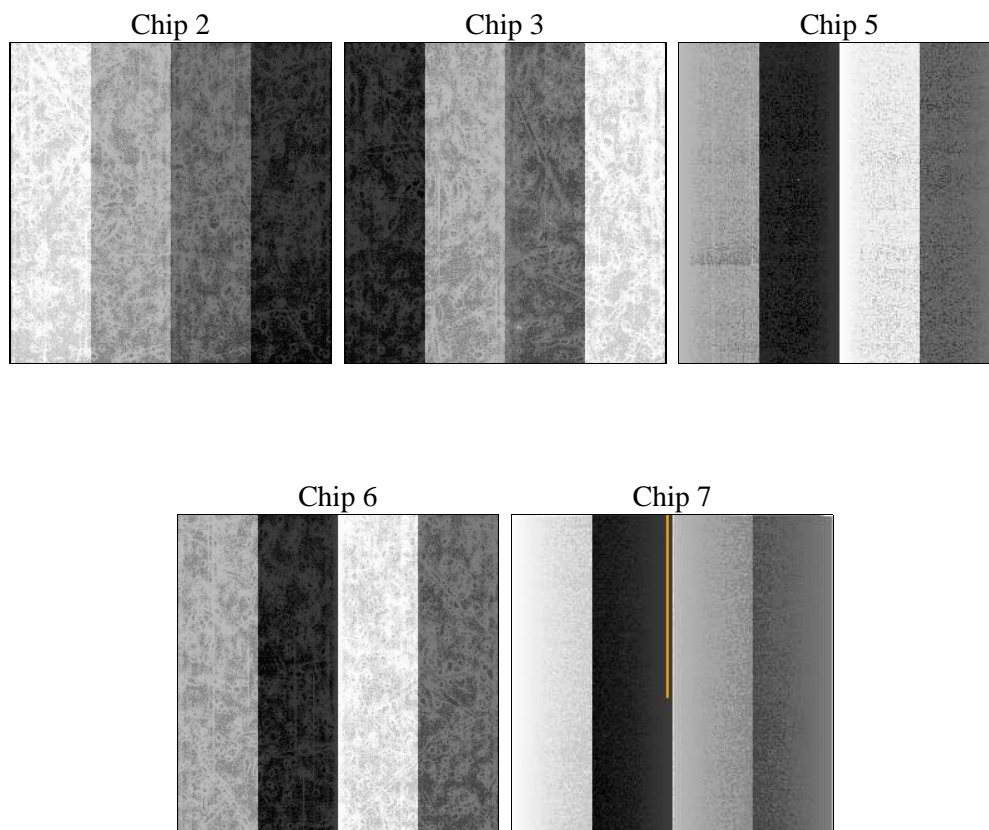
2 OBI

2.1 OBI

2.1.1 Images



2.1.2 Bias



2.1.3 Parameters

obi_num	0	Obi number	sched_exp_time	10000.000000	[s] Scheduled observation exposure time
ascdsver	8.4.5	Processing system revision	ontime	10140.100077987	Sum of GTIs [s]
caldsver	4.4.10	 	ontime2	10140.100077987	Sum of GTIs [s]
date	2012-06-08T06:26:38	Date and time of file creation	ontime3	10140.100077987	Sum of GTIs [s]
revision	2	Processing version of data	ontime5	10140.100077987	Sum of GTIs [s]
			ontime6	10136.959137559	Sum of GTIs [s]
			ontime7	10140.100077987	Sum of GTIs [s]
			l1events	539417	Number of level 1 events

2.1.4 Events

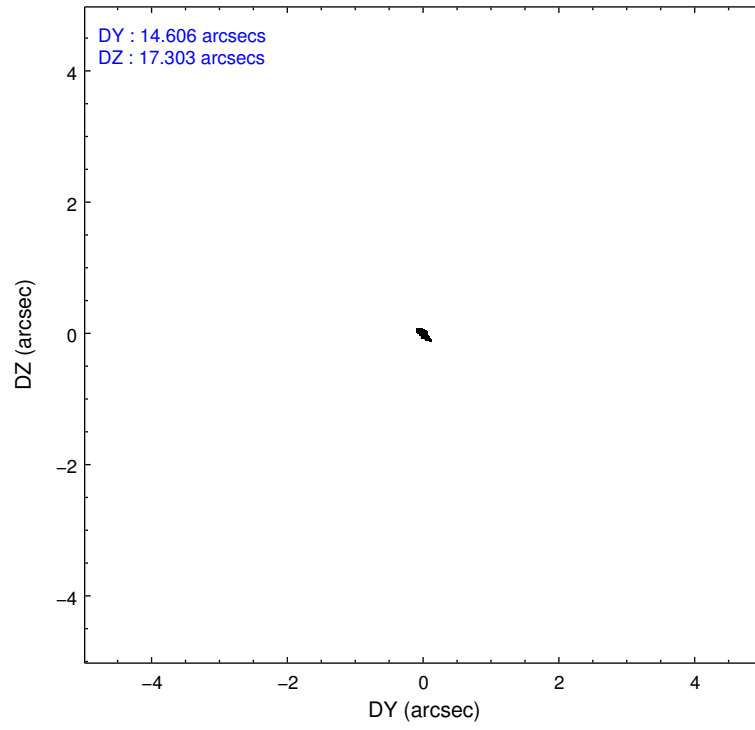
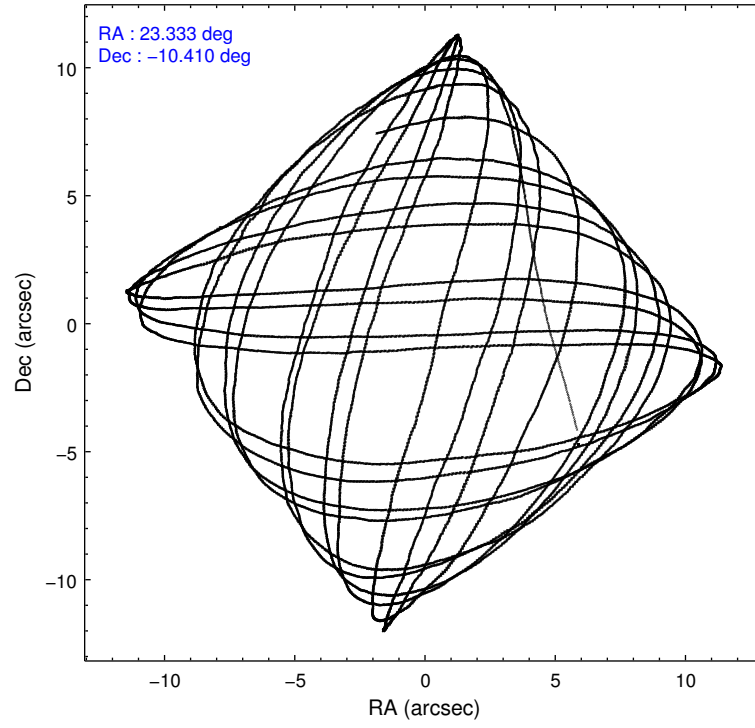
	ccd 2	ccd 3	ccd 5	ccd 6	ccd 7
level 1 events	98257	92528	139756	99534	109342
rejected events	89653	84214	74526	90244	63768
rejected %	91%	91%	53%	90%	58%

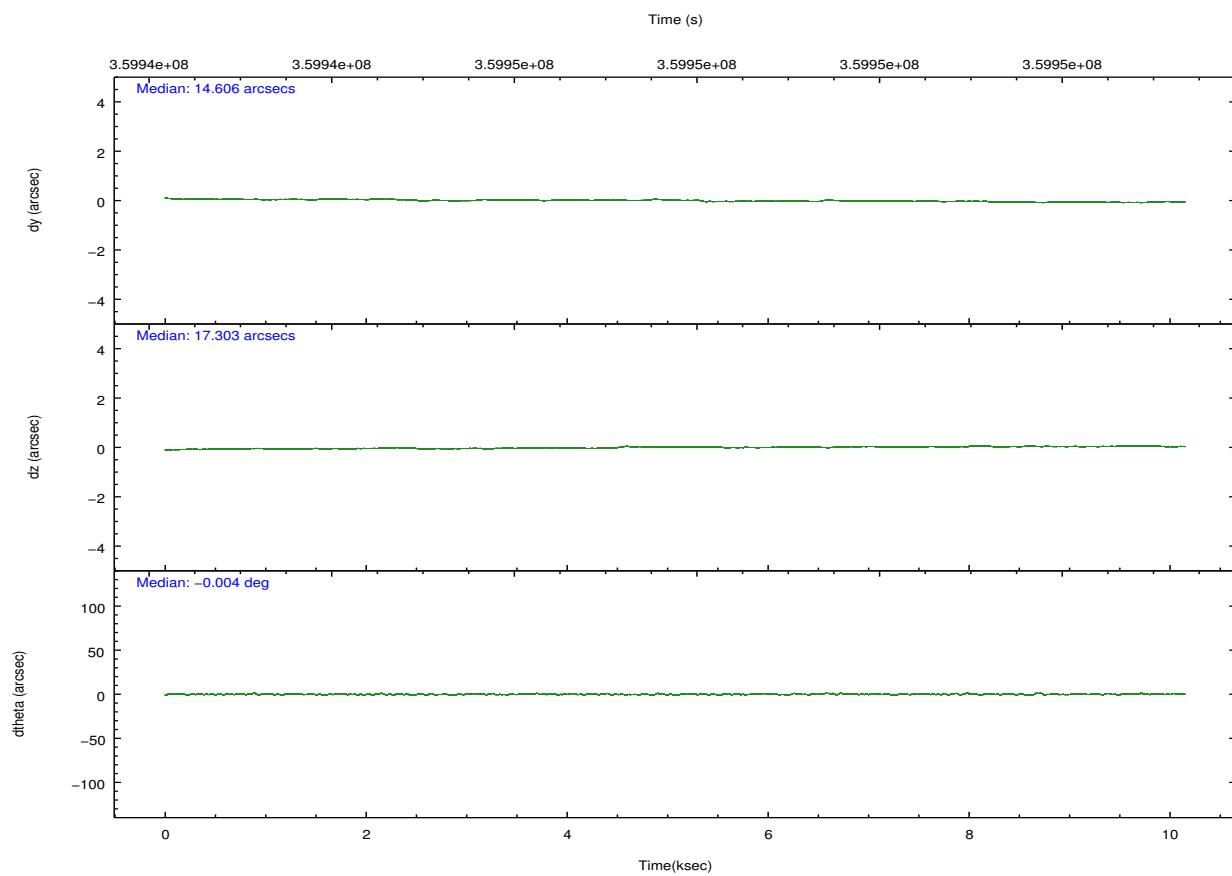
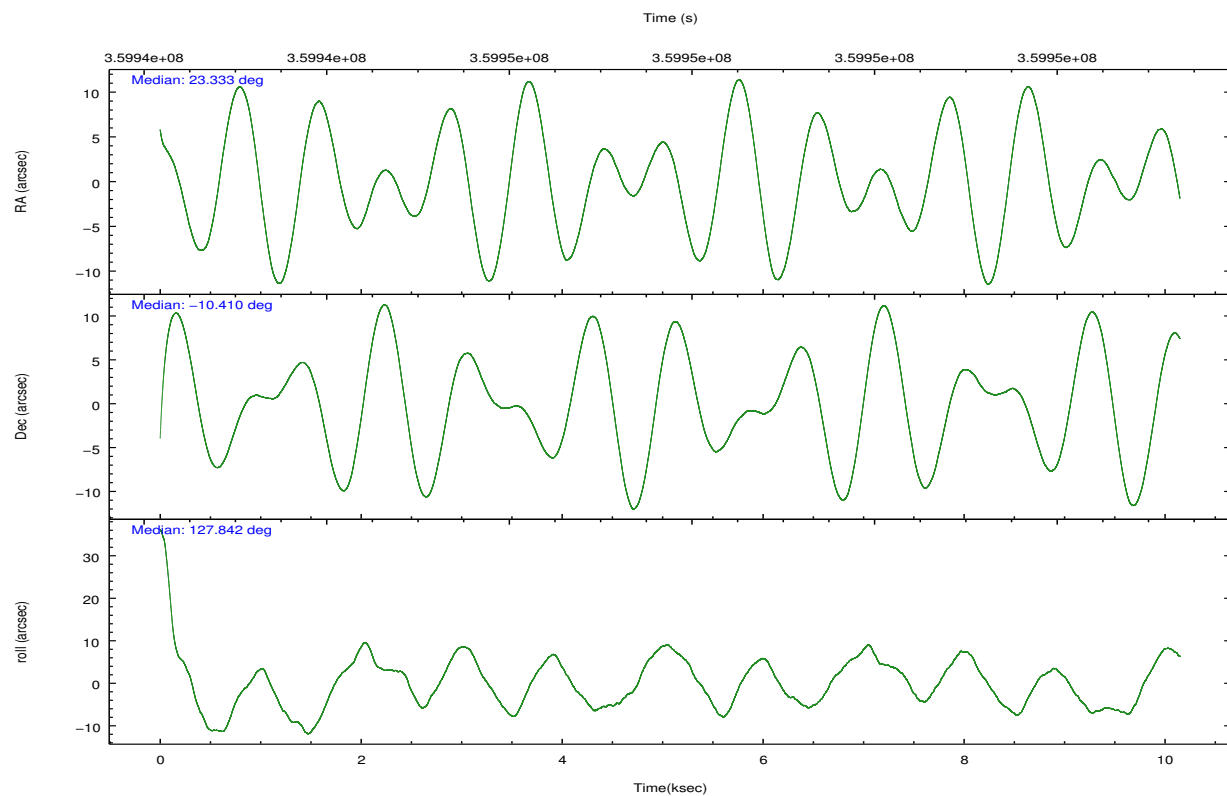
	ccd 2	ccd 3	ccd 5	ccd 6	ccd 7
grade 0 events	3413	3289	10320	3474	4641
	3%	3%	7%	3%	4%
grade 1 events	54	56	416	53	154
	0%	0%	0%	0%	0%
grade 2 events	2289	2003	20181	2278	10345
	2%	2%	14%	2%	9%
grade 3 events	1008	1065	2991	1149	4612
	1%	1%	2%	1%	4%
grade 4 events	970	998	2730	1068	4476
	0%	1%	1%	1%	4%
grade 5 events	3215	3812	10783	4068	11635
	3%	4%	7%	4%	10%
grade 6 events	1766	1813	35396	2272	26070
	1%	1%	25%	2%	23%
grade 7 events	85542	79492	56939	85172	47409
	87%	85%	40%	85%	43%

2.2 Compared Parameters

Parameter	Planned	Actual	Parameter	Planned	Actual
Instrument	ACIS	ACIS	Obspar format version number	7	7
Detector	ACIS-23567	ACIS-23567	Obspar file type	PREDICTED	ACTUAL
Grating	NONE	NONE	Obspar update status	NONE	UPDATED
Data mode	VFAINT	VFAINT	CCD I0 on	N	N
Observation mode	POINTING	POINTING	CCD I1 on	N	N
[deg] Pointing RA	23.358468	23.33260075946858	CCD I2 on	O1	Y
[deg] Pointing Dec	-10.420394	-10.41039686974366	CCD I3 on	O2	Y
[deg] Pointing Roll	127.699714	127.8516880535524	CCD S0 on	N	N
[mm] SIM focus pos	-0.684267	-0.6828225247311905	CCD S1 on	Y	Y
[mm] SIM defocus	0	0.001444936568705701	CCD S2 on	Y	Y
[mm] SIM translation stage pos	-190.132523	-190.1400660498719	CCD S3 on	Y	Y
[mm] SIM translation stage offset	0	0.00754346686406393	CCD S4 on	N	N
[s] Observation start time (MET)	359942835.184000	359941350.39525	CCD S5 on	N	N
Observation start date	2009-05-29T00:06:09	2009-05-28T23:42:30	Number of optional ACIS chips dropped	0	0
[s] Observation end time (MET)	359952835.184000	359953643.73336	On-chip summing requested	N	N
Observation end date	2009-05-29T02:52:49	2009-05-29T03:07:23	Subarray requested	NONE	NONE
Read mode	TIMED	TIMED	Alternating exposures requested	N	N
			[s] Primary exposure time	0.000000	3.1

2.3 Aspect



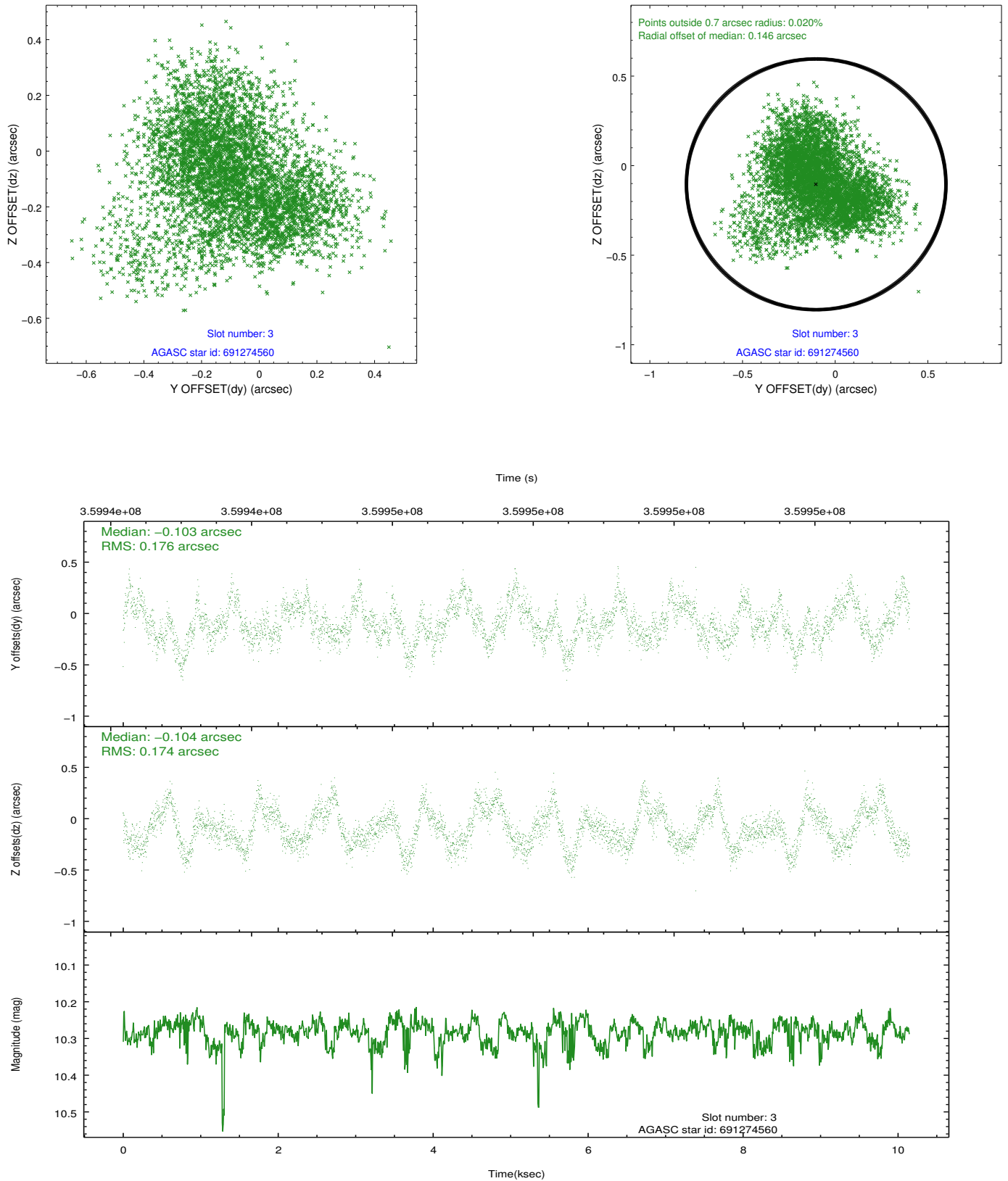


Slot Statistics

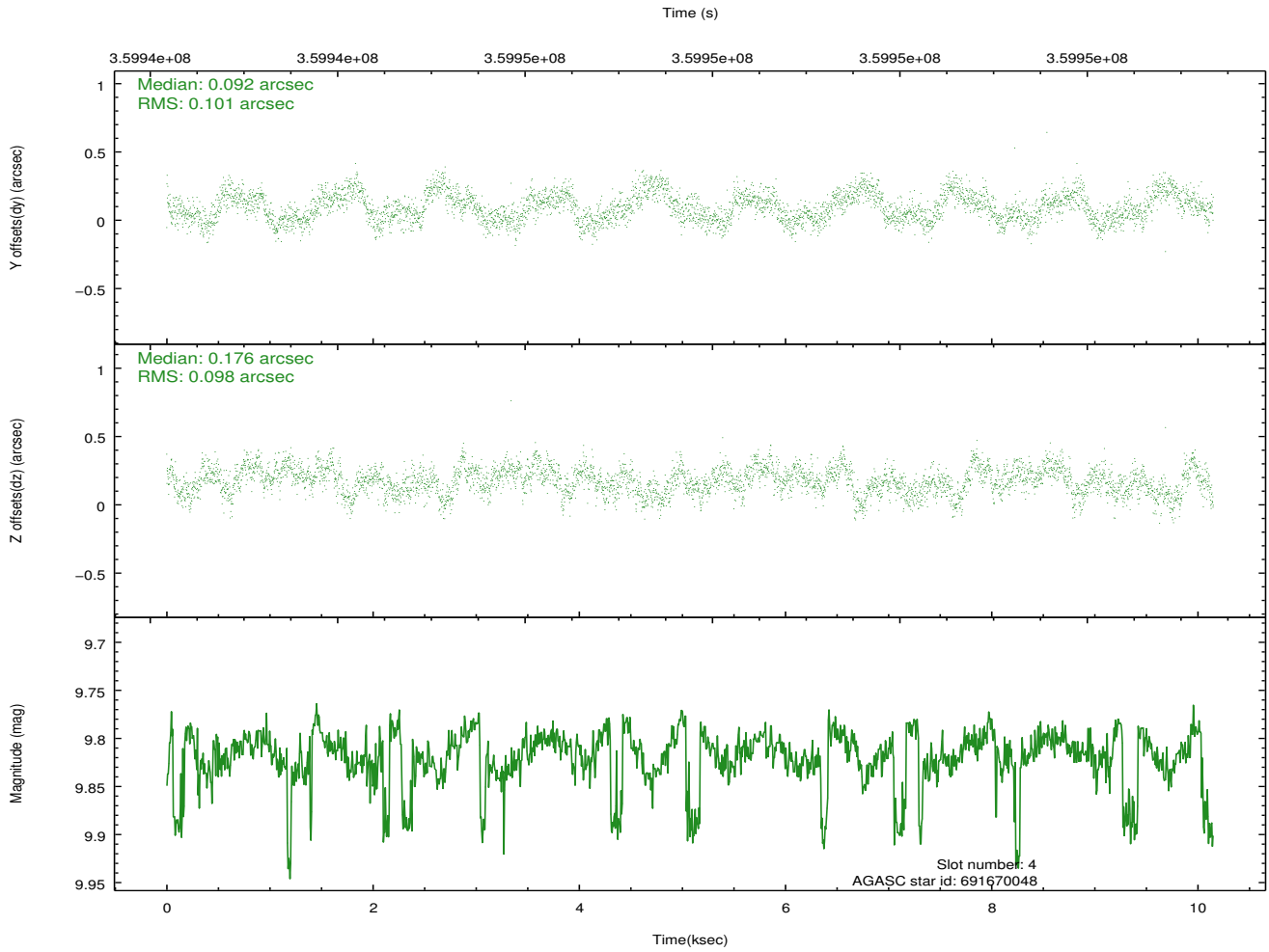
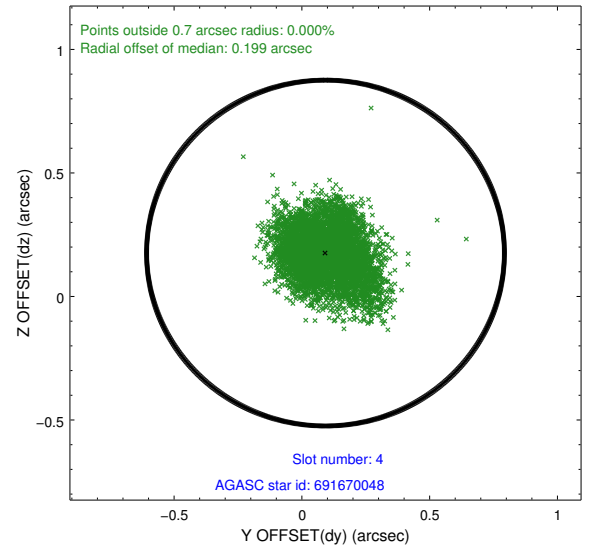
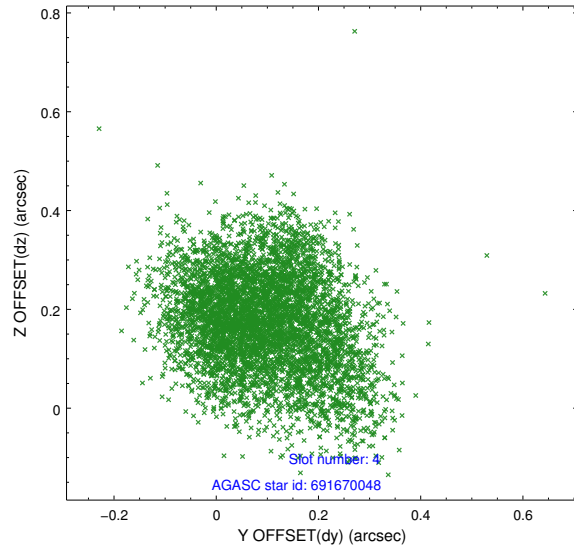
slot	status	id	mag	n_pts	med_dy	med_dz	dr1	dr2	ra	dec	mean_y	mean_z
0	FID	ACIS-S-1	6.95	2476	-0.017	-0.034	0.006	0.012	0.000000	0.000000	928.43	-1734.42
1	FID	ACIS-S-4	6.96	2476	0.053	0.009	0.006	0.010	0.000000	0.000000	2146.21	169.23
2	FID	ACIS-S-6	7.09	2476	-0.060	0.035	0.006	0.011	0.000000	0.000000	395.02	807.23
3	GUIDE	691274560	10.28	4939	-0.103	-0.104	0.269	0.422	22.780466	-10.195045	1892.10	1125.37
4	GUIDE	691670048	9.82	4923	0.092	0.176	0.150	0.238	23.495450	-10.424388	-308.71	-372.81
5	GUIDE	691670208	9.63	4942	-0.171	-0.221	0.114	0.188	23.301791	-10.830988	-1047.13	1062.38
6	GUIDE	691673168	10.29	4940	-0.057	-0.003	0.239	0.399	23.484257	-9.588212	2097.55	-2184.26
7	GUIDE	691677744	9.79	4946	0.228	0.185	0.176	0.270	23.960309	-10.694263	-2082.69	-1080.72

2.4 Star Slots

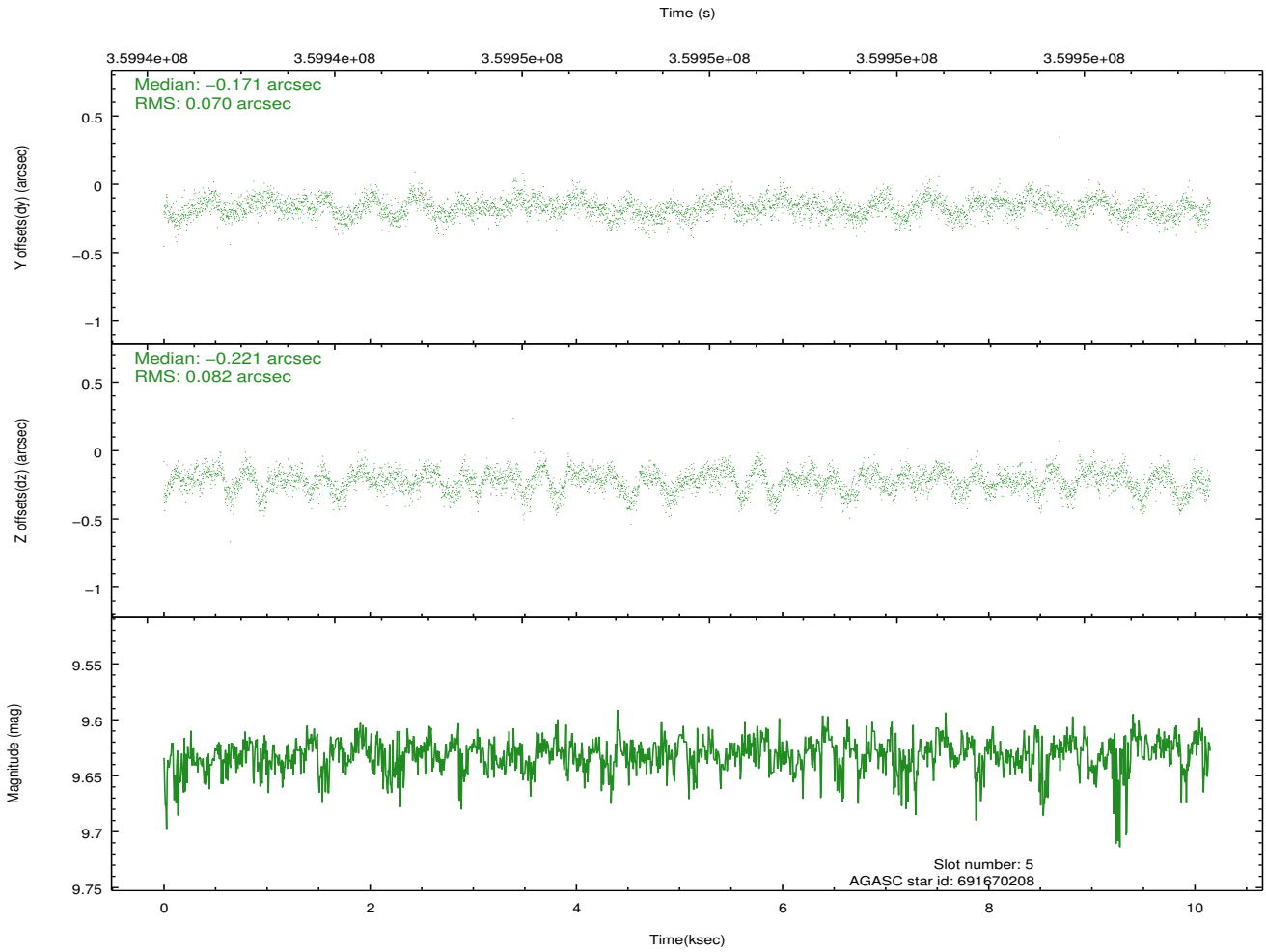
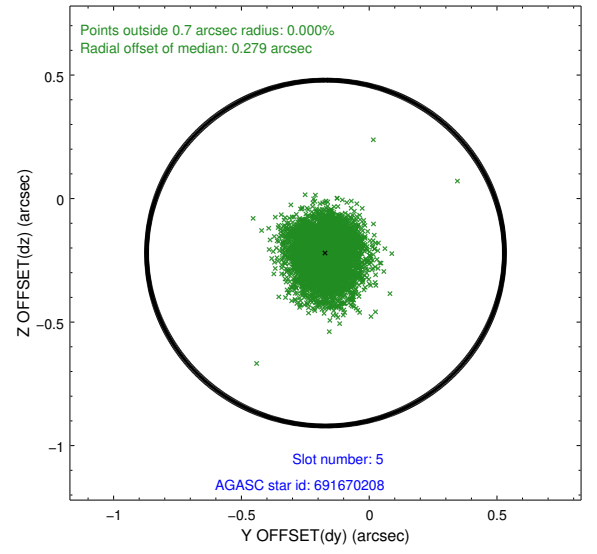
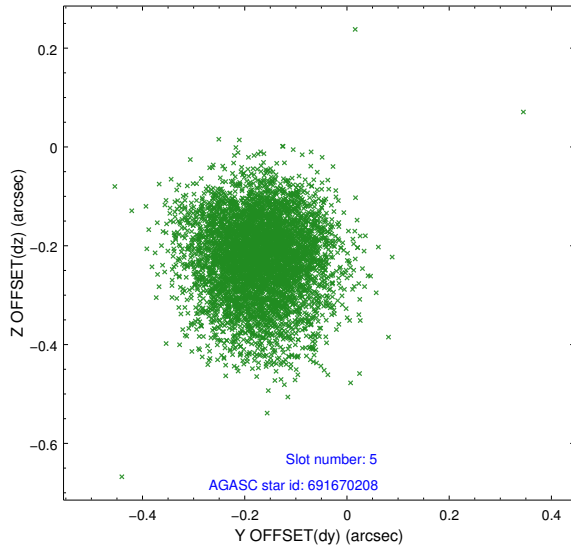
2.4.1 Slot 3



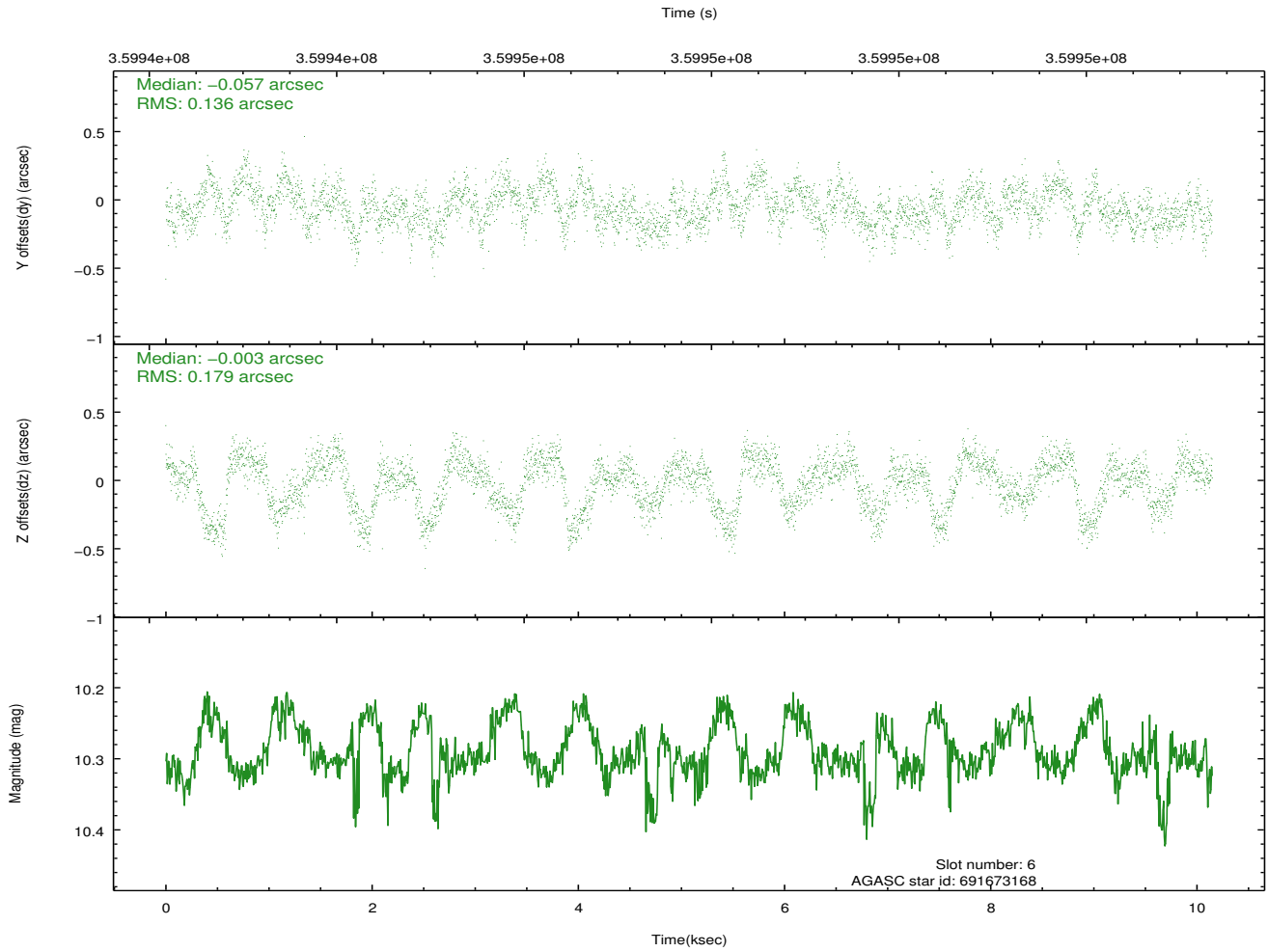
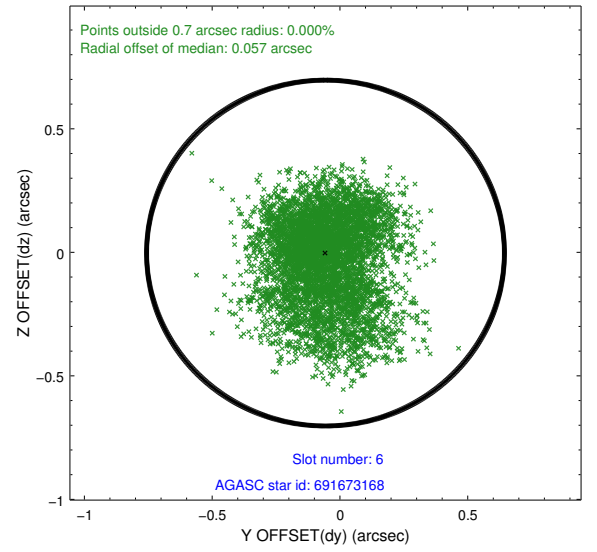
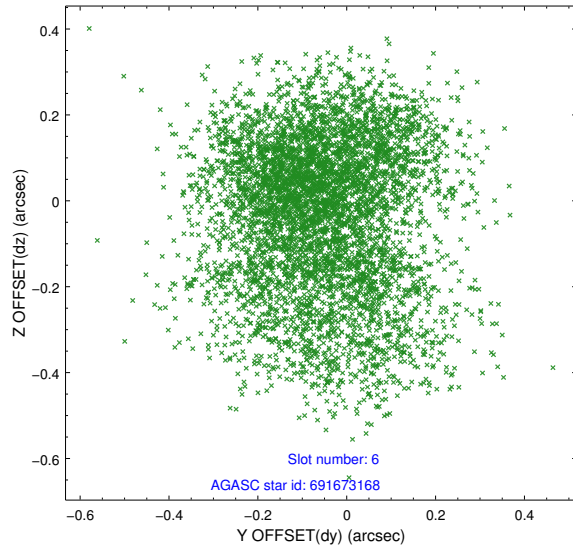
2.4.2 Slot 4



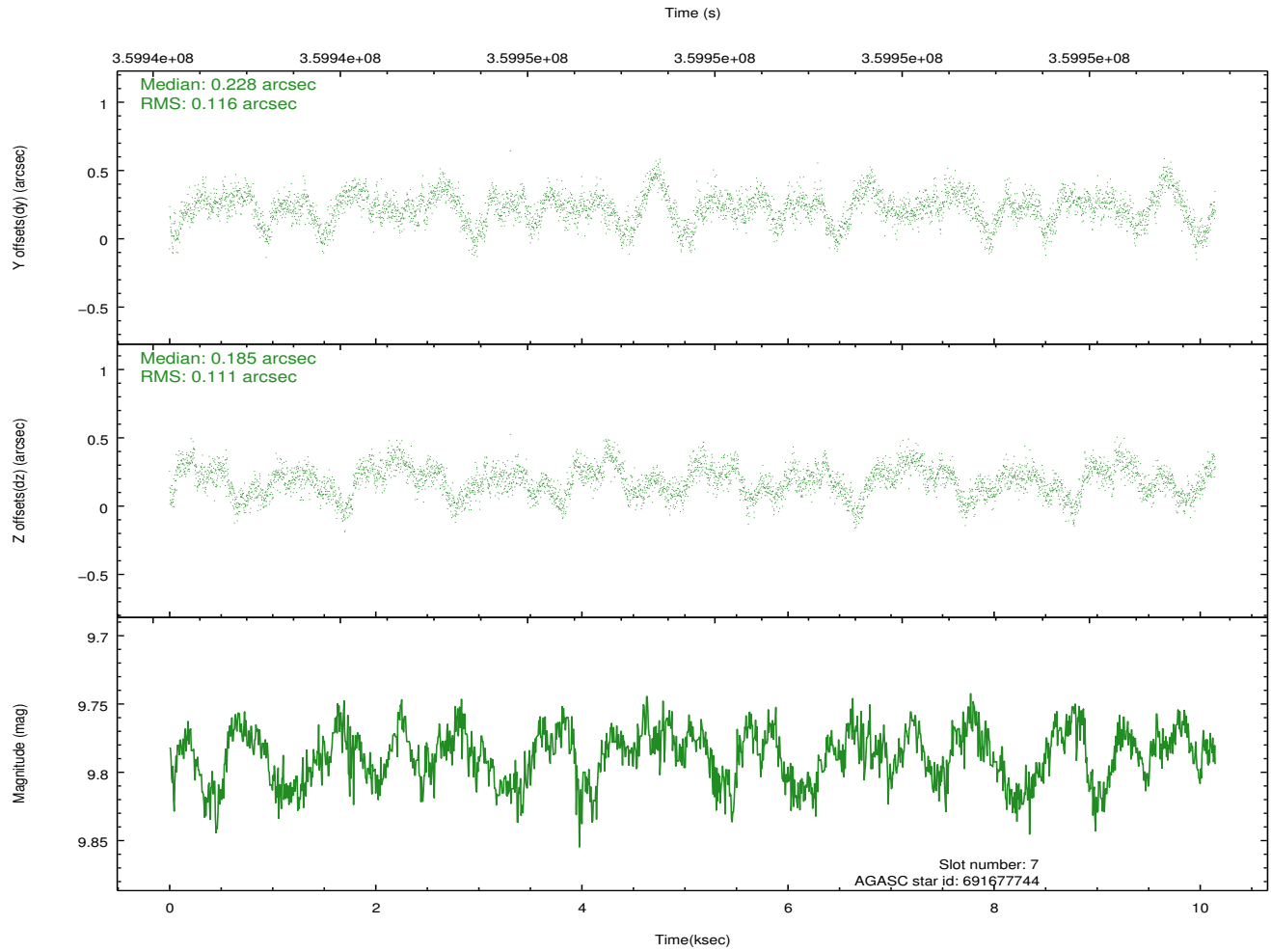
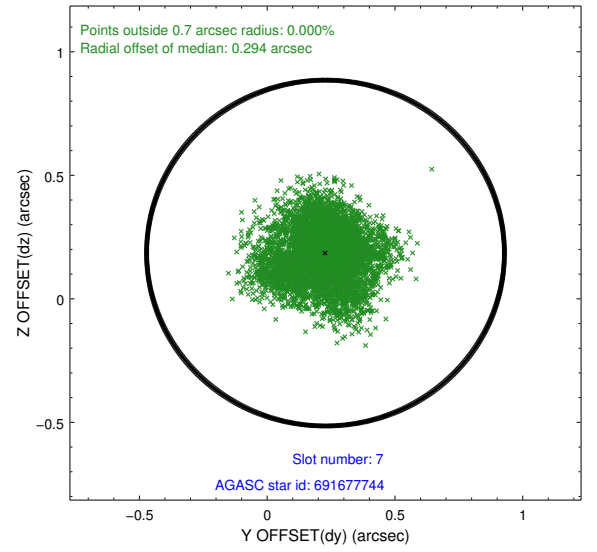
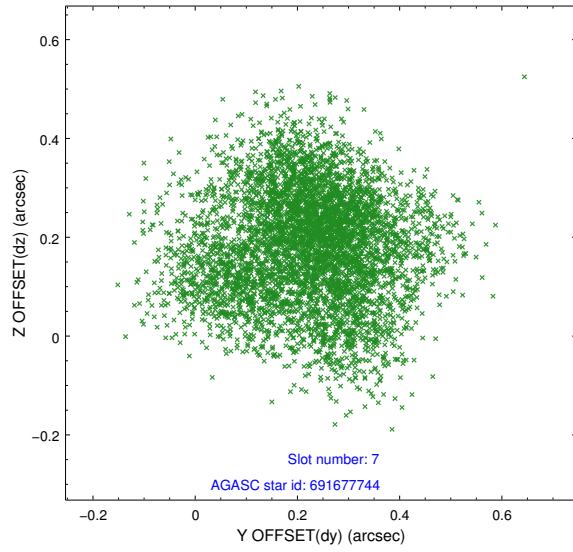
2.4.3 Slot 5



2.4.4 Slot 6

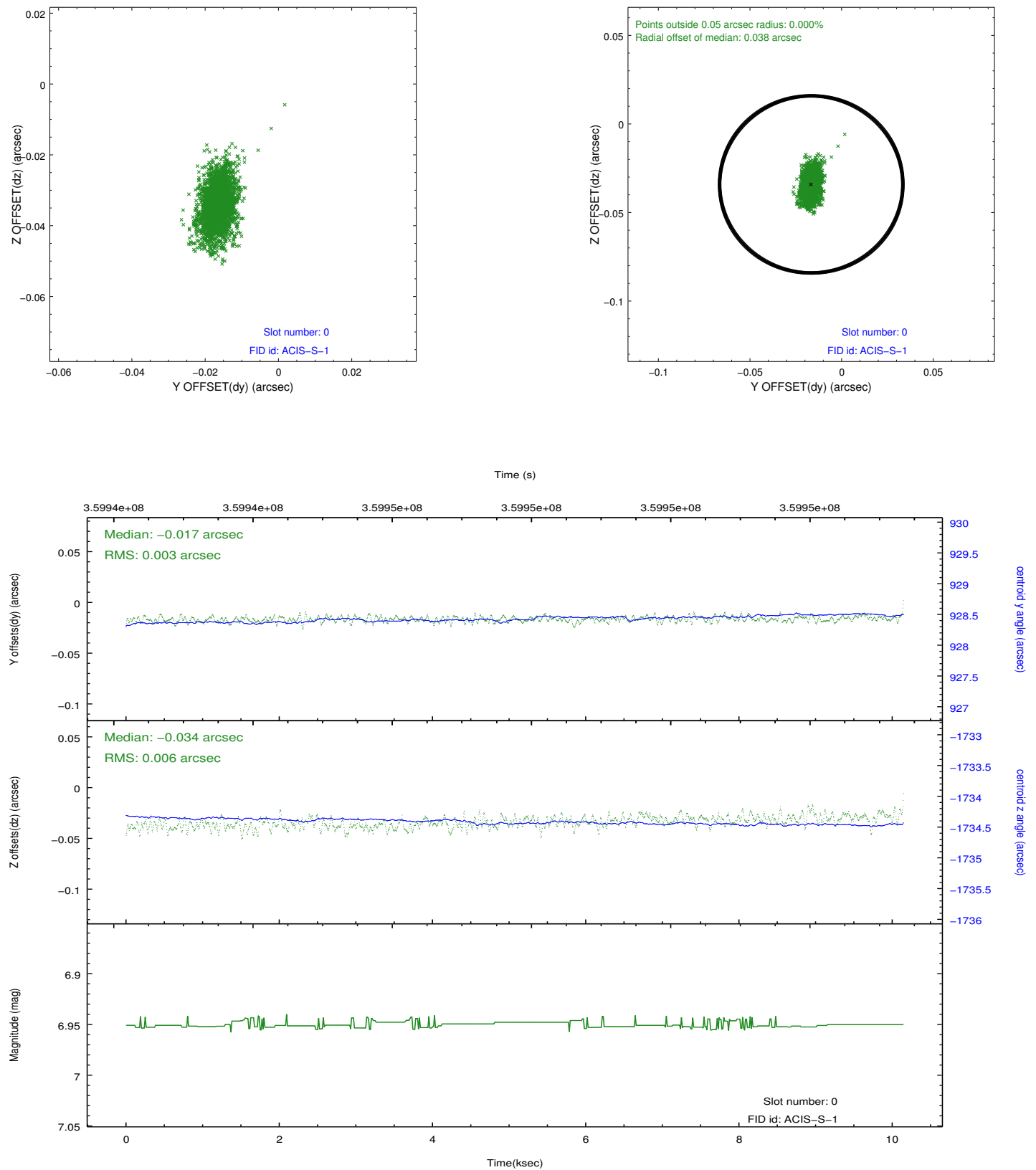


2.4.5 Slot 7

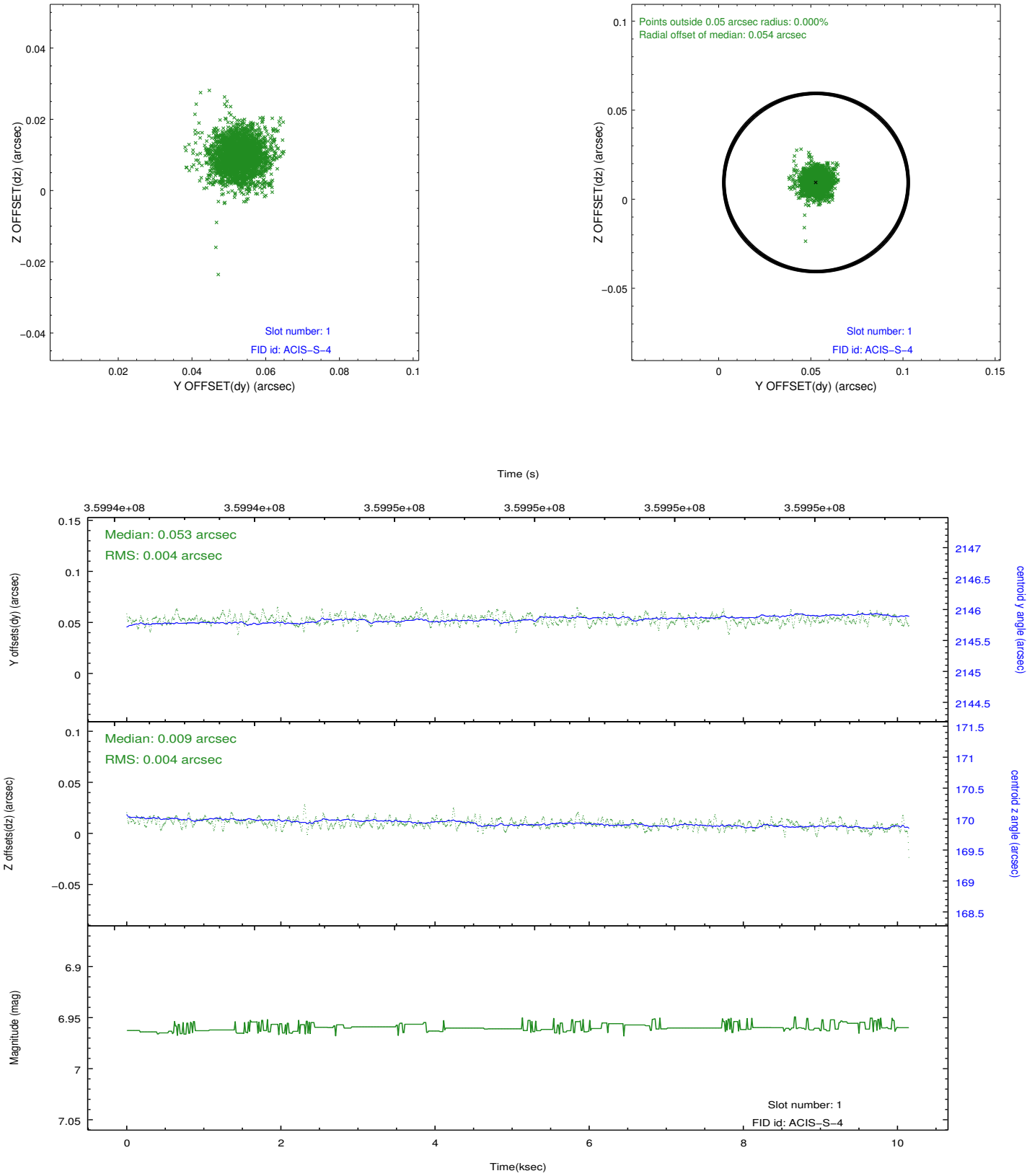


2.5 FID Slots

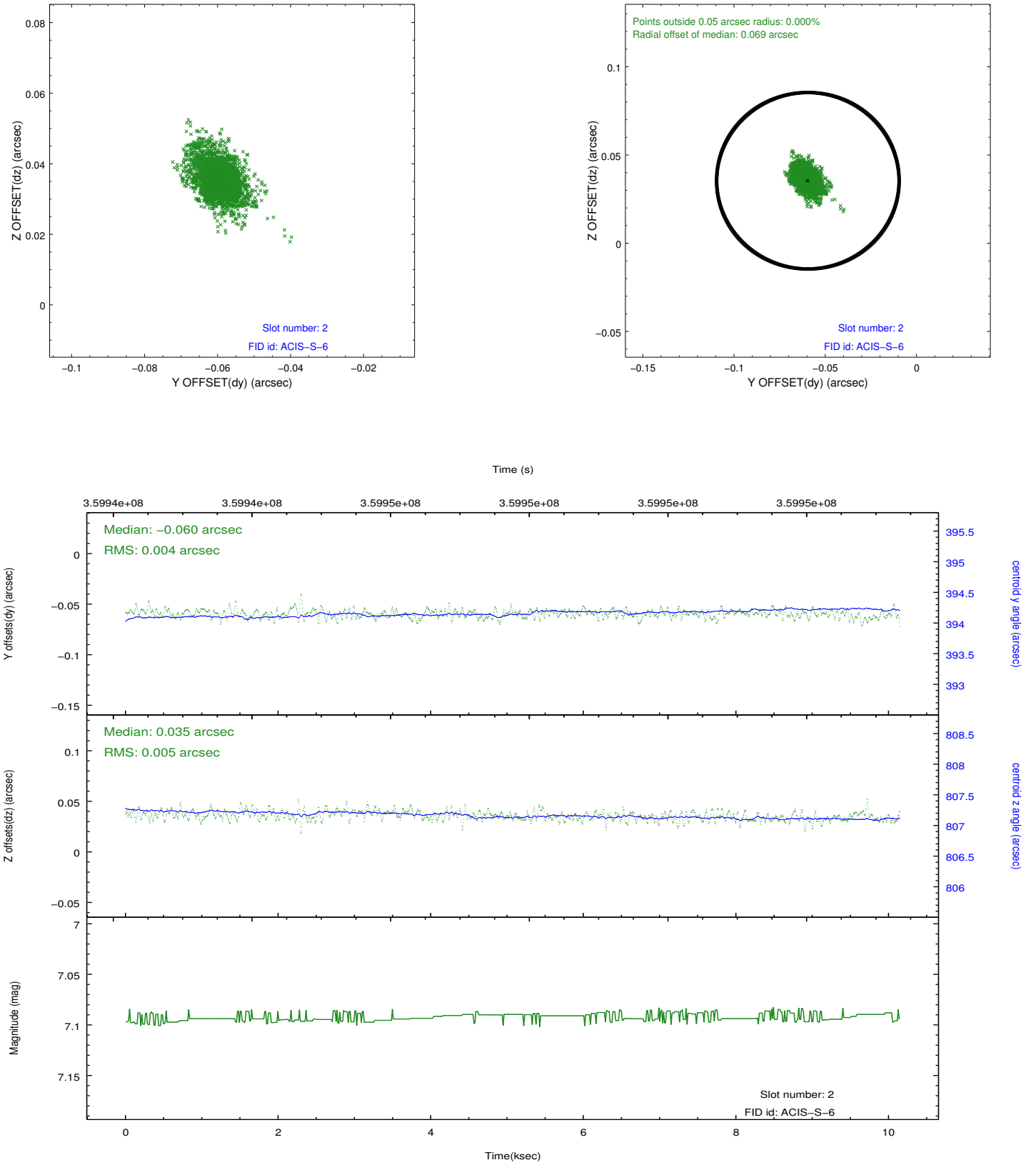
2.5.1 Slot 0



2.5.2 Slot 1



2.5.3 Slot 2



A Summary

A.1 Status

V&V Scientist	Jen Lauer
V&V Date (YYYY-MM-DD)	2012.06.11
V&V Edition	1
V&V Disposition and Status	OK
V&V Charge Time	10.1401

A.2 Comments