

V&V Reference Report

L2 ASCDS Version : 8.4.5

Observation 10752 - L2 Version 2
Chandra X-Ray Center

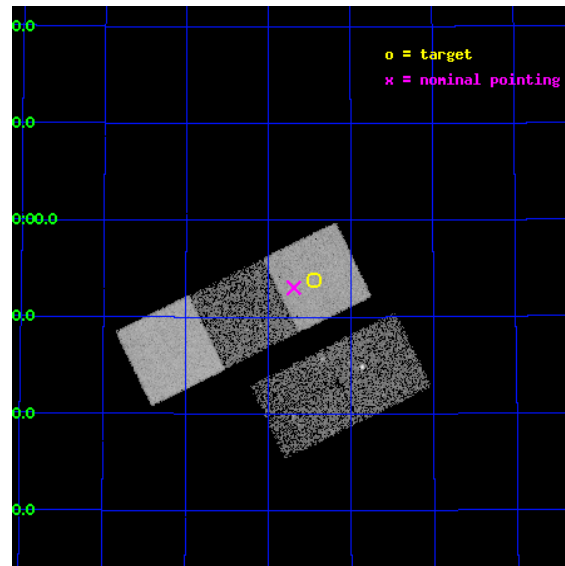
L2 Processing Date : Jun 13 2012

Contents

1	Front	2
2	OBI	3
2.1	OBI	3
2.1.1	Images	3
2.1.2	Bias	3
2.1.3	Parameters	4
2.1.4	Events	4
2.2	Compared Parameters	5
2.3	Aspect	6
2.4	Star Slots	9
2.4.1	Slot 3	9
2.4.2	Slot 4	10
2.4.3	Slot 5	11
2.4.4	Slot 6	12
2.4.5	Slot 7	13
2.5	FID Slots	14
2.5.1	Slot 0	14
2.5.2	Slot 1	15
2.5.3	Slot 2	16
A	Summary	17
A.1	Status	17
A.2	Comments	17

1 Front

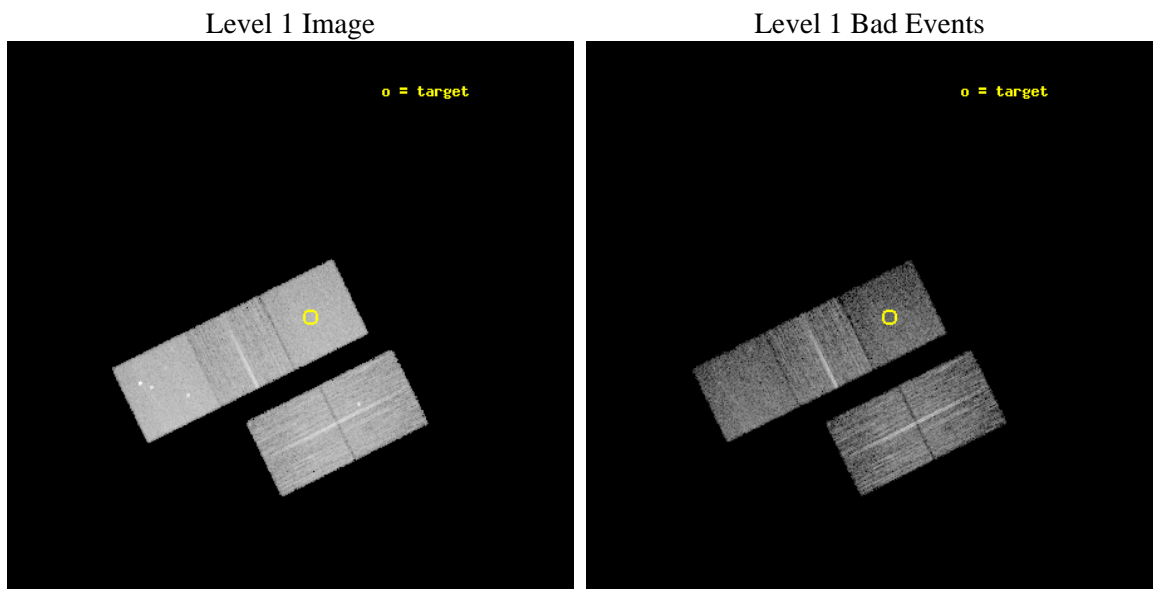
seq_num	900899	Sequence number
obs_id	10752	Observation id
title	The Origin and Evolution of Fossil Groups	Proposal title
observer	Professor Gordon Garmire	Principal investigator
object	SDSS J1336+5453	Source name
dtcycle	0	
cycle	P	events from which exps? Prim/Second/Both
ra_targ	204.1125	Observer's specified target RA [deg]
dec_targ	54.898278	Observer's specified target Dec [deg]
ra_nom	204.17274383298	Nominal RA [deg]
dec_nom	54.883929657083	Nominal Dec [deg]
roll_nom	333.76821205262	Nominal Roll [deg]
revision	2	Processing version of data
ontime	7164.1000550985	Sum of GTIs [s]
livetime	7070.4958137449	Livetime [s]
ontime2	7164.1000550985	Sum of GTIs [s]
ontime3	7160.9590747952	Sum of GTIs [s]
ontime5	7164.1000550985	Sum of GTIs [s]
ontime6	7164.1000550985	Sum of GTIs [s]
ontime7	7164.1000550985	Sum of GTIs [s]
l2events	90097	Number of level 2 events



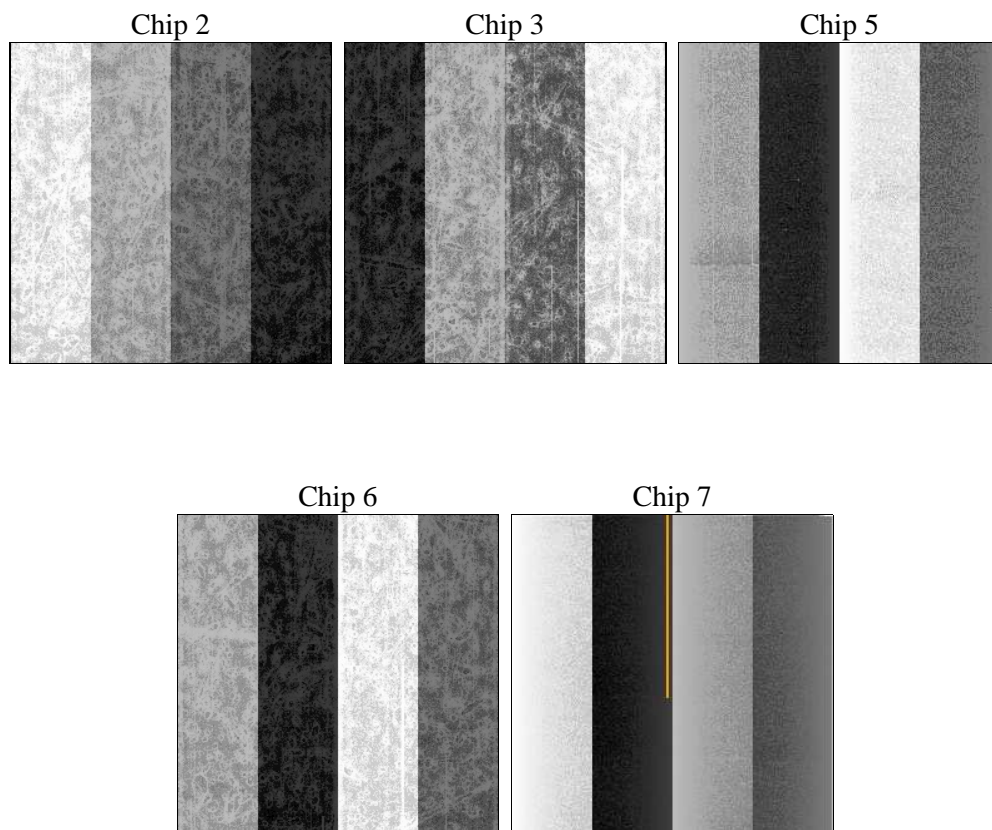
2 OBI

2.1 OBI

2.1.1 Images



2.1.2 Bias



2.1.3 Parameters

obi_num	0	Obi number	sched_exp_time	7000.000000	[s] Scheduled observation exposure time
ascdsver	8.4.5	Processing system revision	ontime	7164.1000550985	Sum of GTIs [s]
caldsver	4.4.10	 	ontime2	7164.1000550985	Sum of GTIs [s]
date	2012-06-13T19:45:35	Date and time of file creation	ontime3	7160.9590747952	Sum of GTIs [s]
revision	2	Processing version of data	ontime5	7164.1000550985	Sum of GTIs [s]
			ontime6	7164.1000550985	Sum of GTIs [s]
			ontime7	7164.1000550985	Sum of GTIs [s]
			l1events	358366	Number of level 1 events

2.1.4 Events

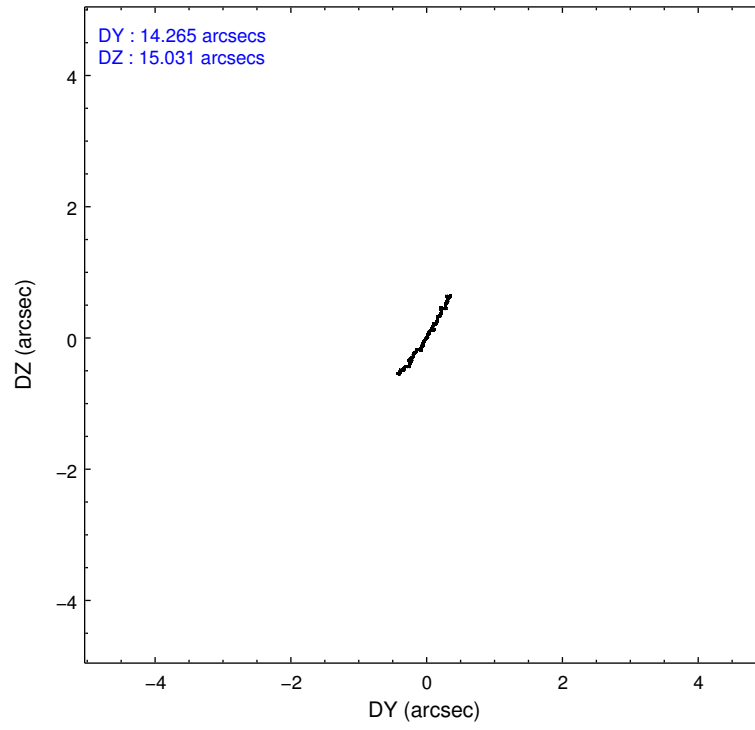
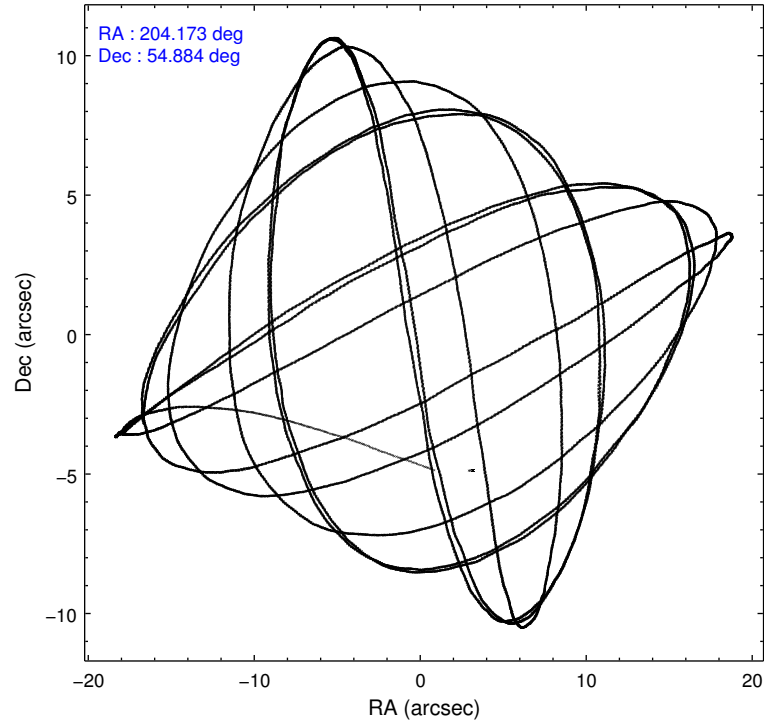
	ccd 2	ccd 3	ccd 5	ccd 6	ccd 7
level 1 events	66886	62723	91181	65726	71850
rejected events	60550	56142	46219	59095	39087
rejected %	90%	89%	50%	89%	54%

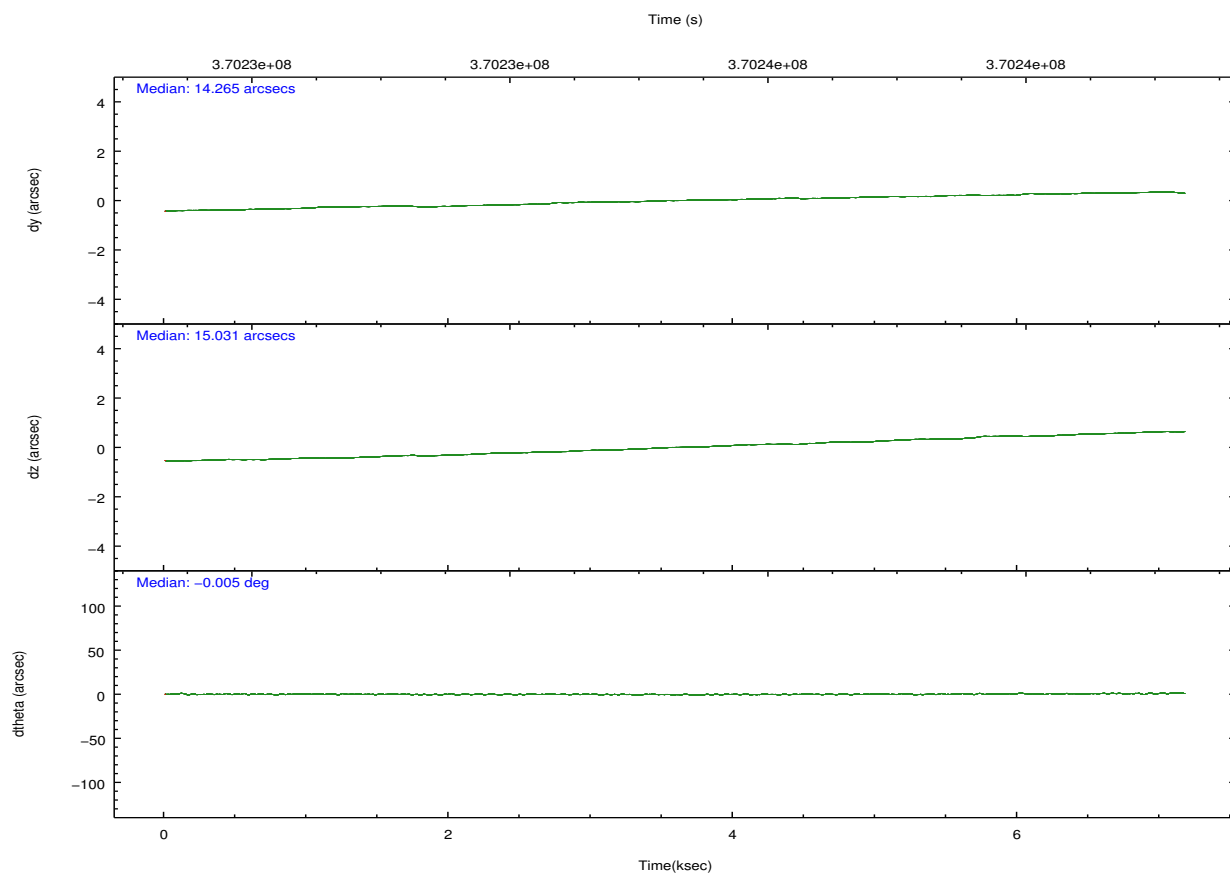
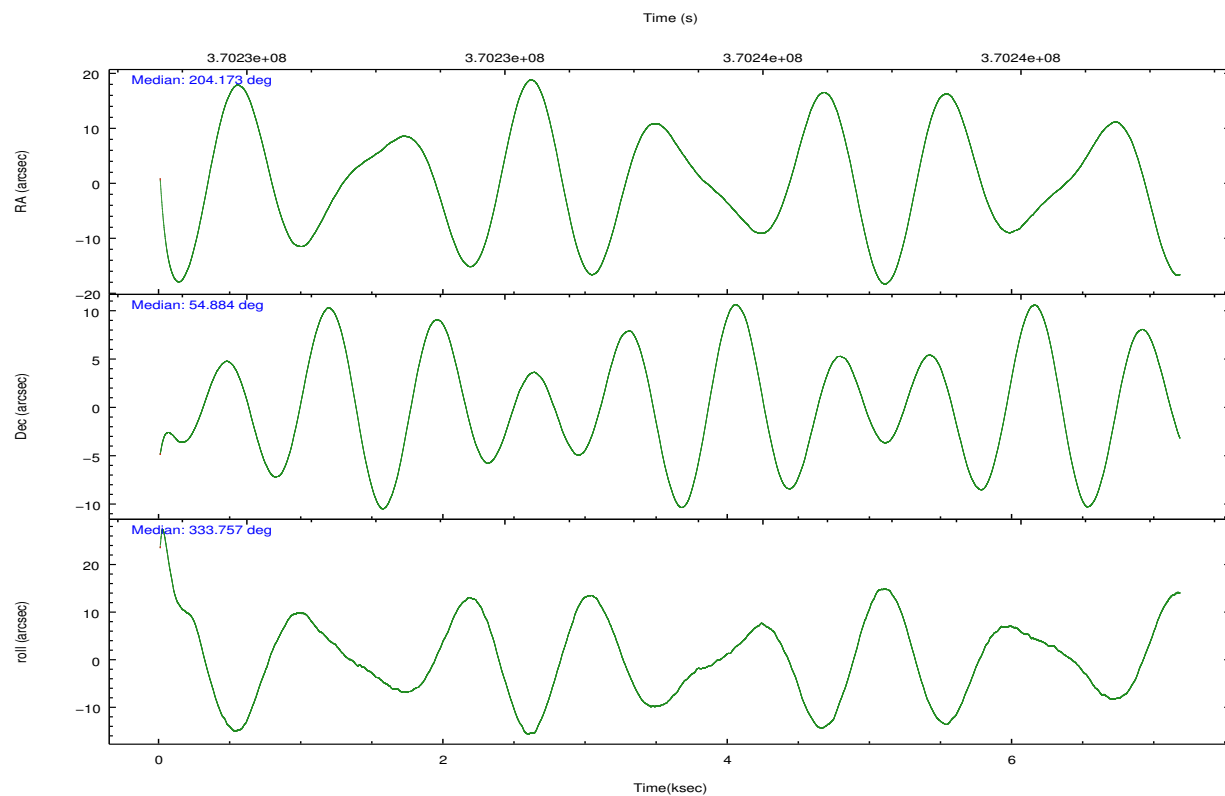
	ccd 2	ccd 3	ccd 5	ccd 6	ccd 7
grade 0 events	2420	2686	5115	2442	3187
	3%	4%	5%	3%	4%
grade 1 events	31	38	228	42	88
	0%	0%	0%	0%	0%
grade 2 events	1492	1408	13698	1480	6837
	2%	2%	15%	2%	9%
grade 3 events	665	669	1750	712	2999
	0%	1%	1%	1%	4%
grade 4 events	692	673	1740	707	3089
	1%	1%	1%	1%	4%
grade 5 events	2061	2576	6858	2644	7624
	3%	4%	7%	4%	10%
grade 6 events	1181	1253	23437	1413	17180
	1%	1%	25%	2%	23%
grade 7 events	58344	53420	38355	56286	30846
	87%	85%	42%	85%	42%

2.2 Compared Parameters

Parameter	Planned	Actual	Parameter	Planned	Actual
Instrument	ACIS	ACIS	Obspar format version number	7	7
Detector	ACIS-23567	ACIS-23567	Obspar file type	PREDICTED	ACTUAL
Grating	NONE	NONE	Obspar update status	NONE	UPDATED
Data mode	VFAINT	VFAINT	CCD I0 on	N	N
Observation mode	POINTING	POINTING	CCD I1 on	N	N
[deg] Pointing RA	204.125439	204.1727438329787	CCD I2 on	O1	Y
[deg] Pointing Dec	54.881757	54.8839296570832	CCD I3 on	O2	Y
[deg] Pointing Roll	333.650241	333.7682120526205	CCD S0 on	N	N
[mm] SIM focus pos	-0.684267	-0.6828225247311905	CCD S1 on	Y	Y
[mm] SIM defocus	0	0.001444936568705701	CCD S2 on	Y	Y
[mm] SIM translation stage pos	-190.132523	-190.1400660498719	CCD S3 on	Y	Y
[mm] SIM translation stage offset	0	0.00754346686406393	CCD S4 on	N	N
[s] Observation start time (MET)	370231863.184000	370230810.33523	CCD S5 on	N	N
Observation start date	2009-09-25T02:09:57	2009-09-25T01:53:30	Number of optional ACIS chips dropped	0	0
[s] Observation end time (MET)	370238863.184000	370239763.19818	On-chip summing requested	N	N
Observation end date	2009-09-25T04:06:37	2009-09-25T04:22:43	Subarray requested	NONE	NONE
Read mode	TIMED	TIMED	Alternating exposures requested	N	N
			[s] Primary exposure time	0.000000	3.1

2.3 Aspect



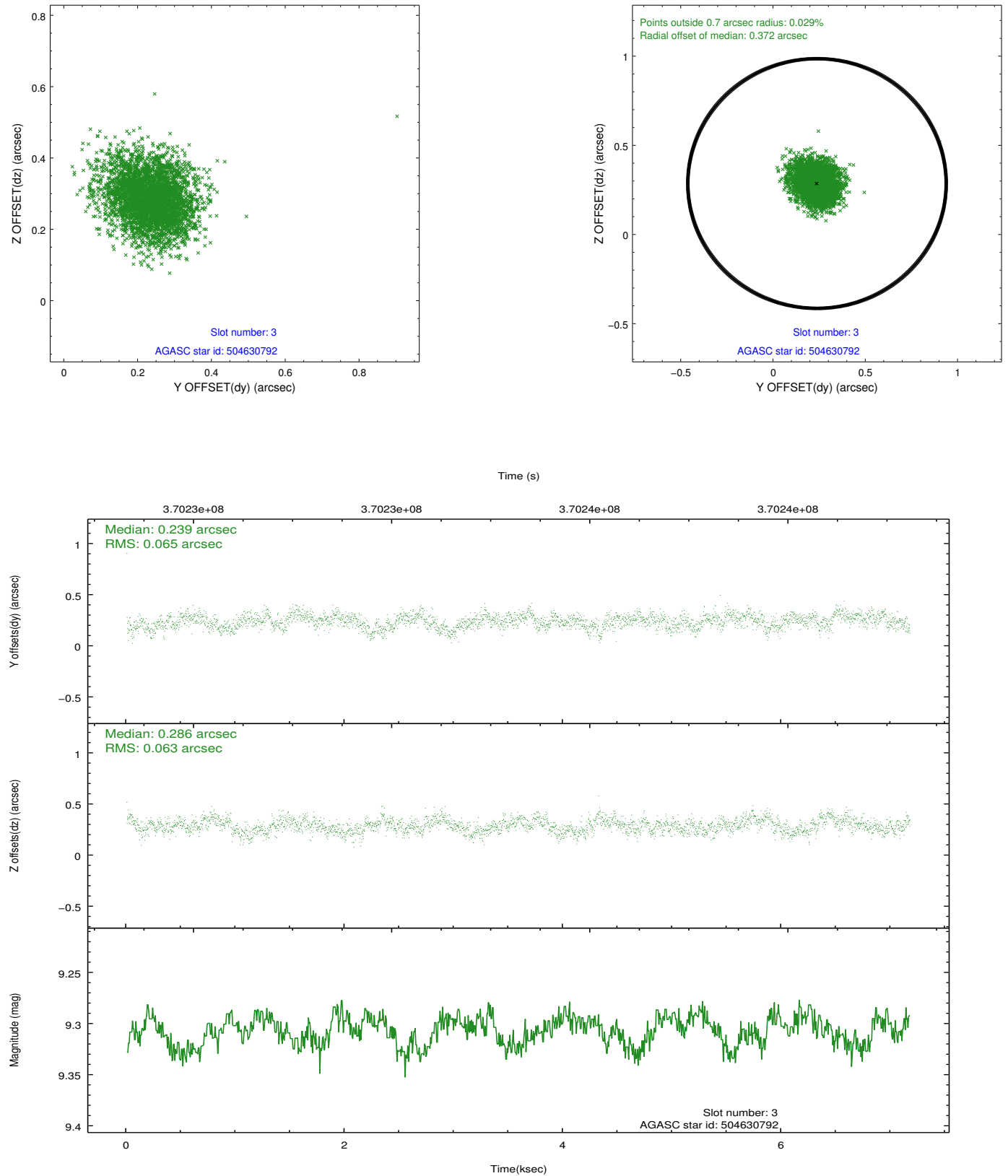


Slot Statistics

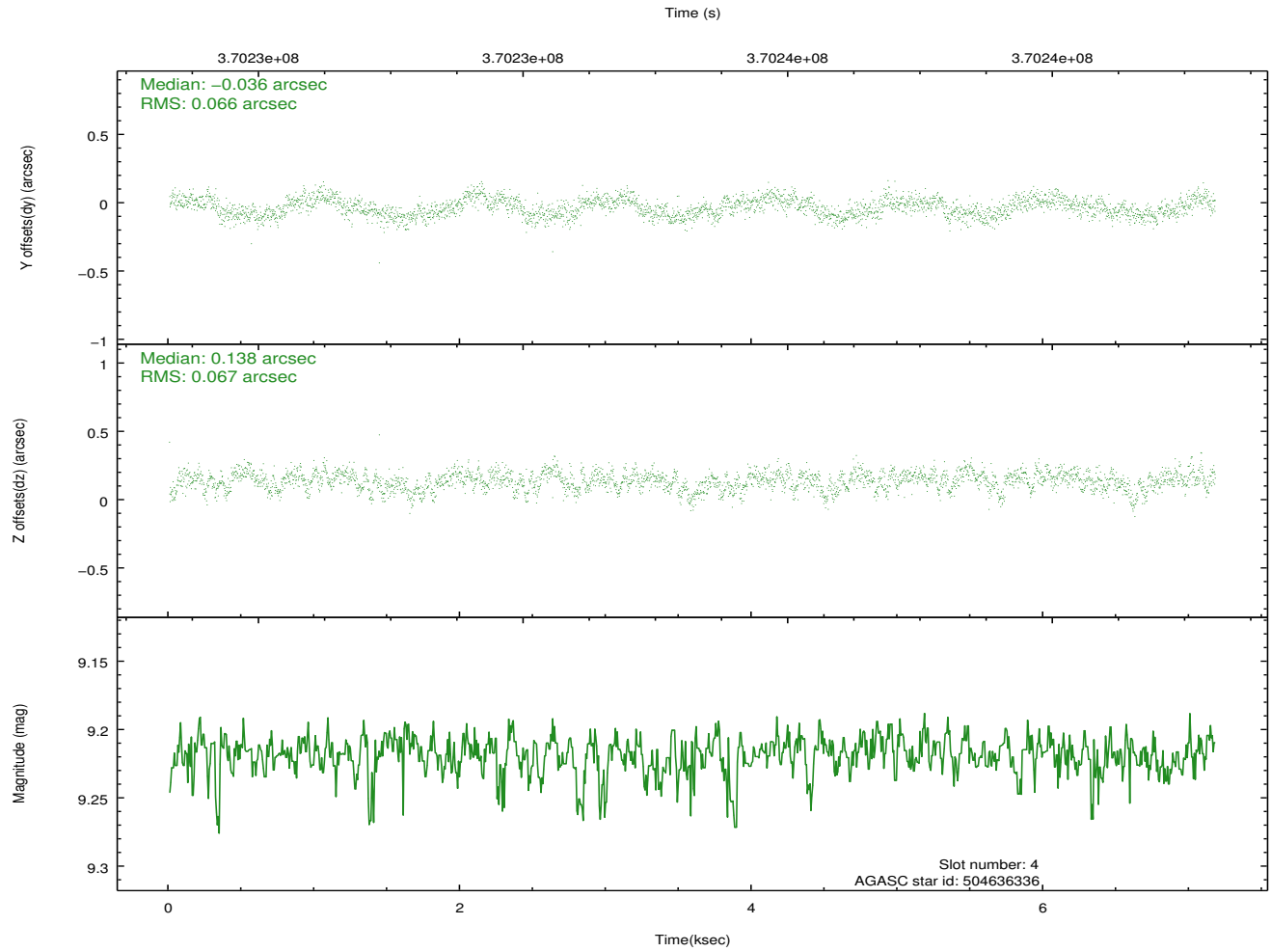
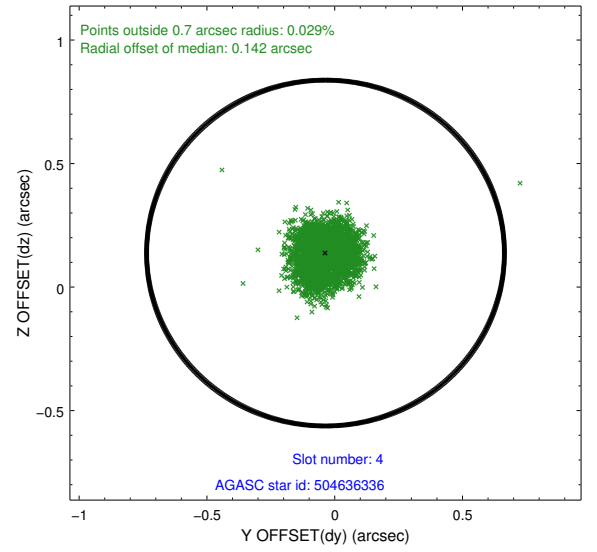
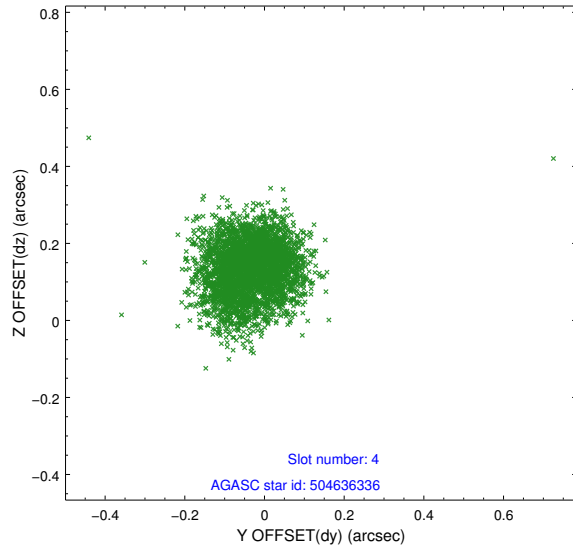
slot	status	id	mag	n_pts	med_dy	med_dz	dr1	dr2	ra	dec	mean_y	mean_z
0	FID	ACIS-S-2	6.87	1750	-0.068	-0.015	0.017	0.026	0.000000	0.000000	-767.23	-1736.44
1	FID	ACIS-S-4	6.95	1750	0.174	0.034	0.011	0.017	0.000000	0.000000	2145.89	171.30
2	FID	ACIS-S-5	6.97	1750	-0.145	-0.013	0.017	0.029	0.000000	0.000000	-1819.15	165.78
3	GUIDE	504630792	9.31	3500	0.239	0.286	0.096	0.155	203.303673	54.983746	-1687.72	-415.15
4	GUIDE	504636336	9.22	3495	-0.036	0.138	0.100	0.156	203.895351	54.347886	420.42	-1935.34
5	GUIDE	504761728	8.89	3499	-0.029	-0.080	0.088	0.138	204.470411	54.272569	1622.68	-1642.33
6	GUIDE	505023720	6.09	3499	-0.229	-0.252	0.077	0.133	203.530517	55.348447	-1838.72	969.02
7	GUIDE	505152616	9.01	3497	0.050	-0.091	0.087	0.136	204.575343	55.063488	539.36	1001.22

2.4 Star Slots

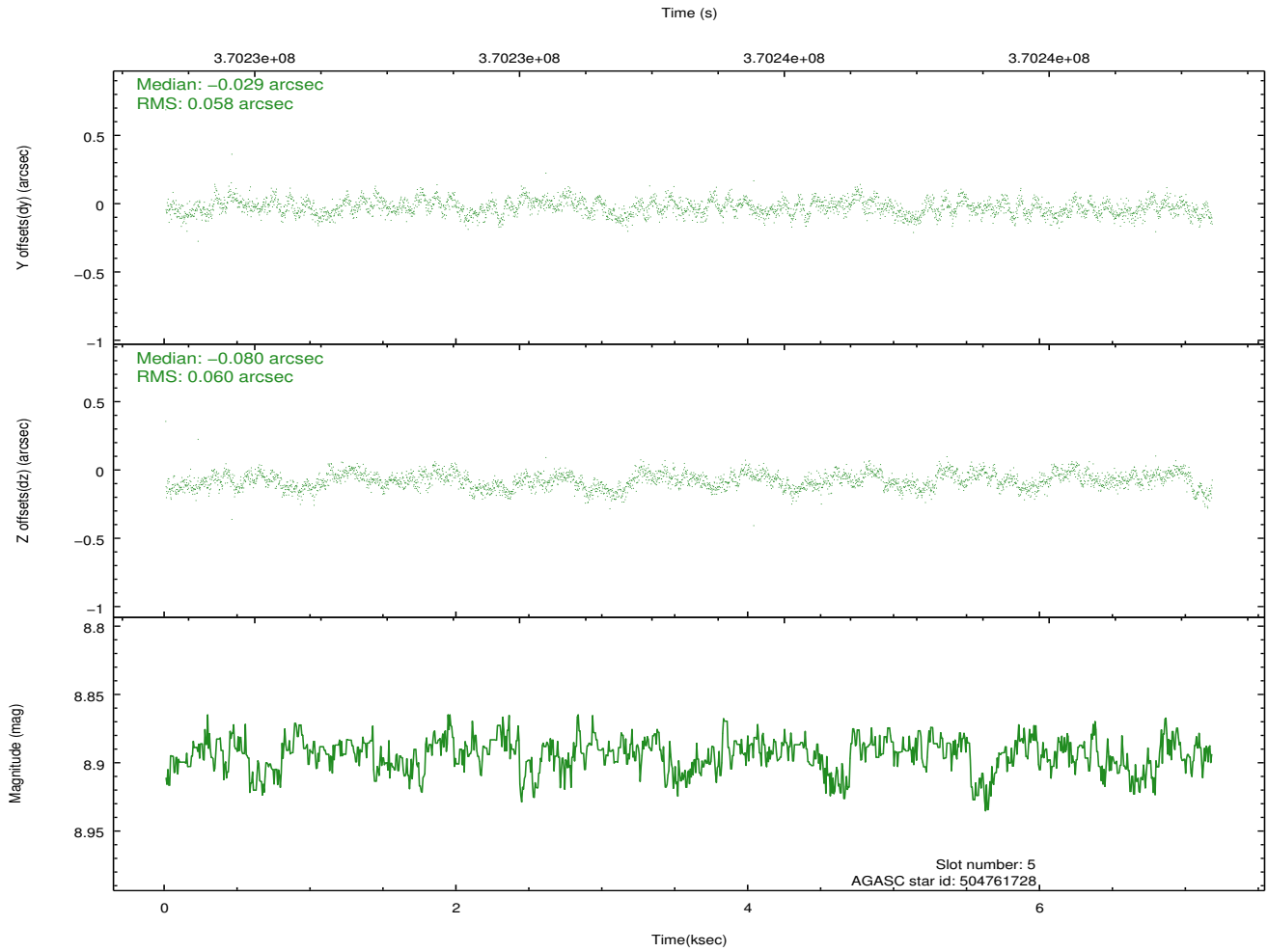
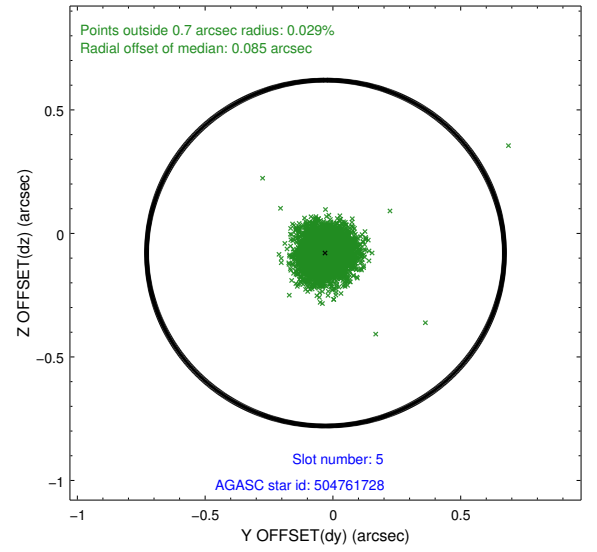
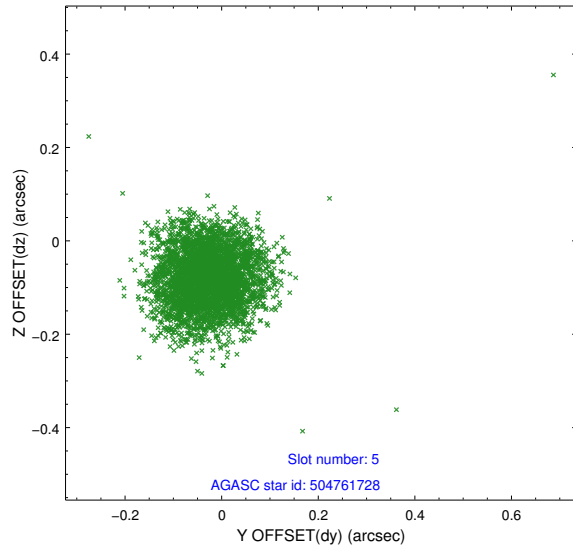
2.4.1 Slot 3



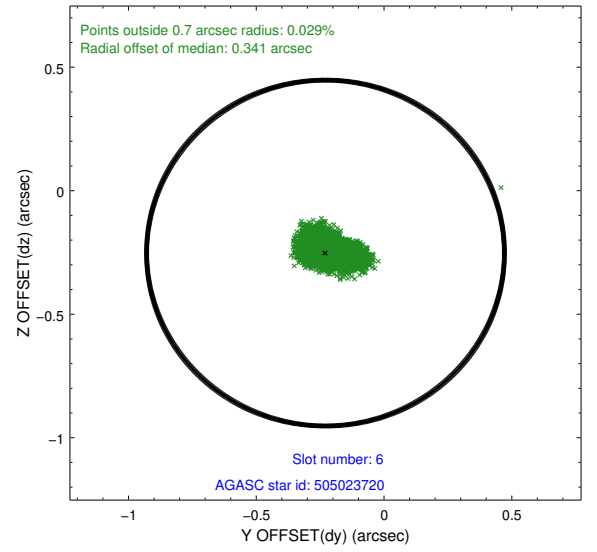
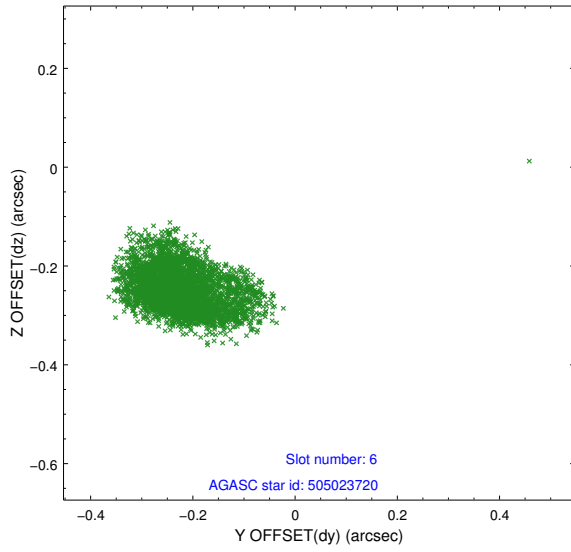
2.4.2 Slot 4



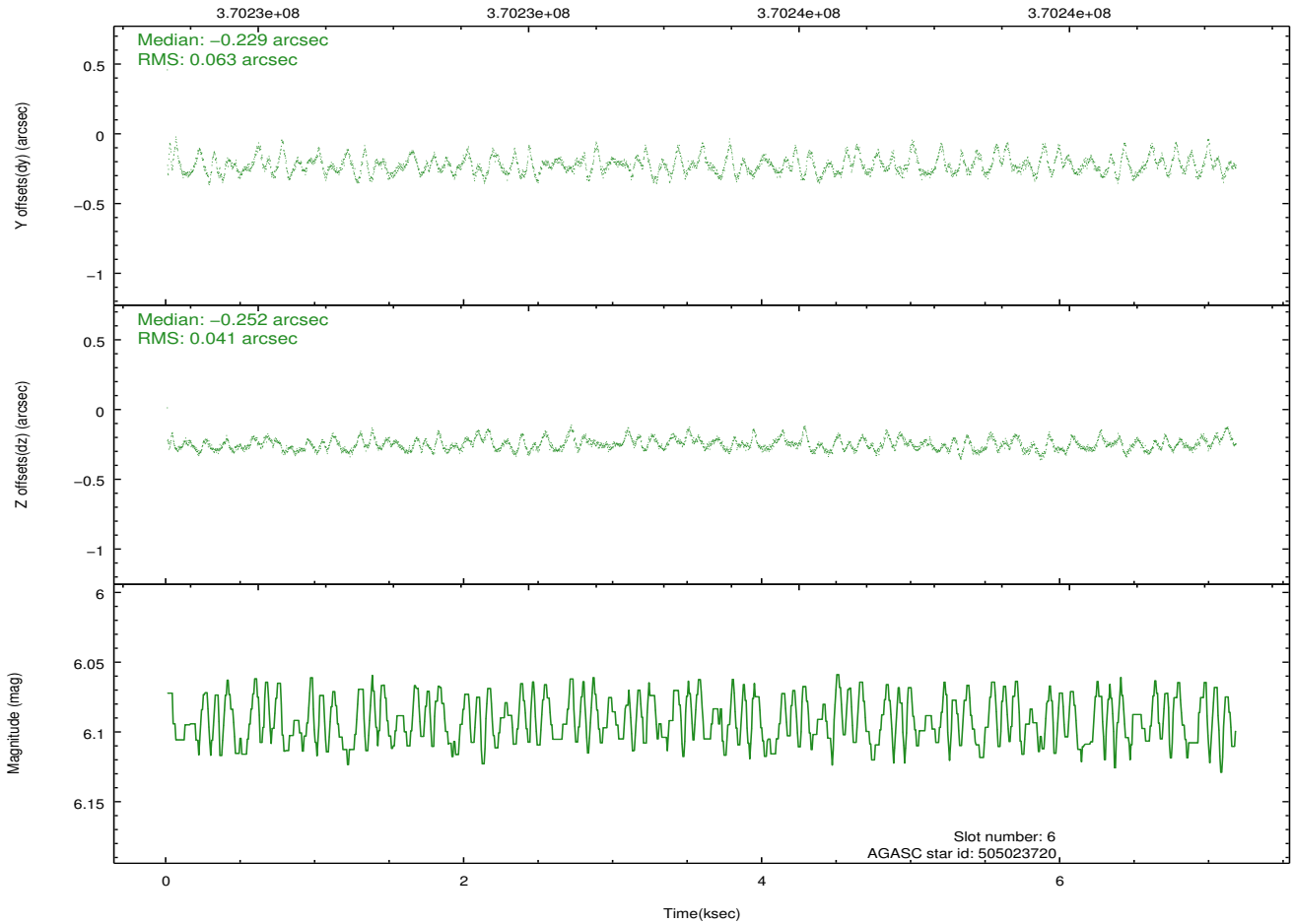
2.4.3 Slot 5



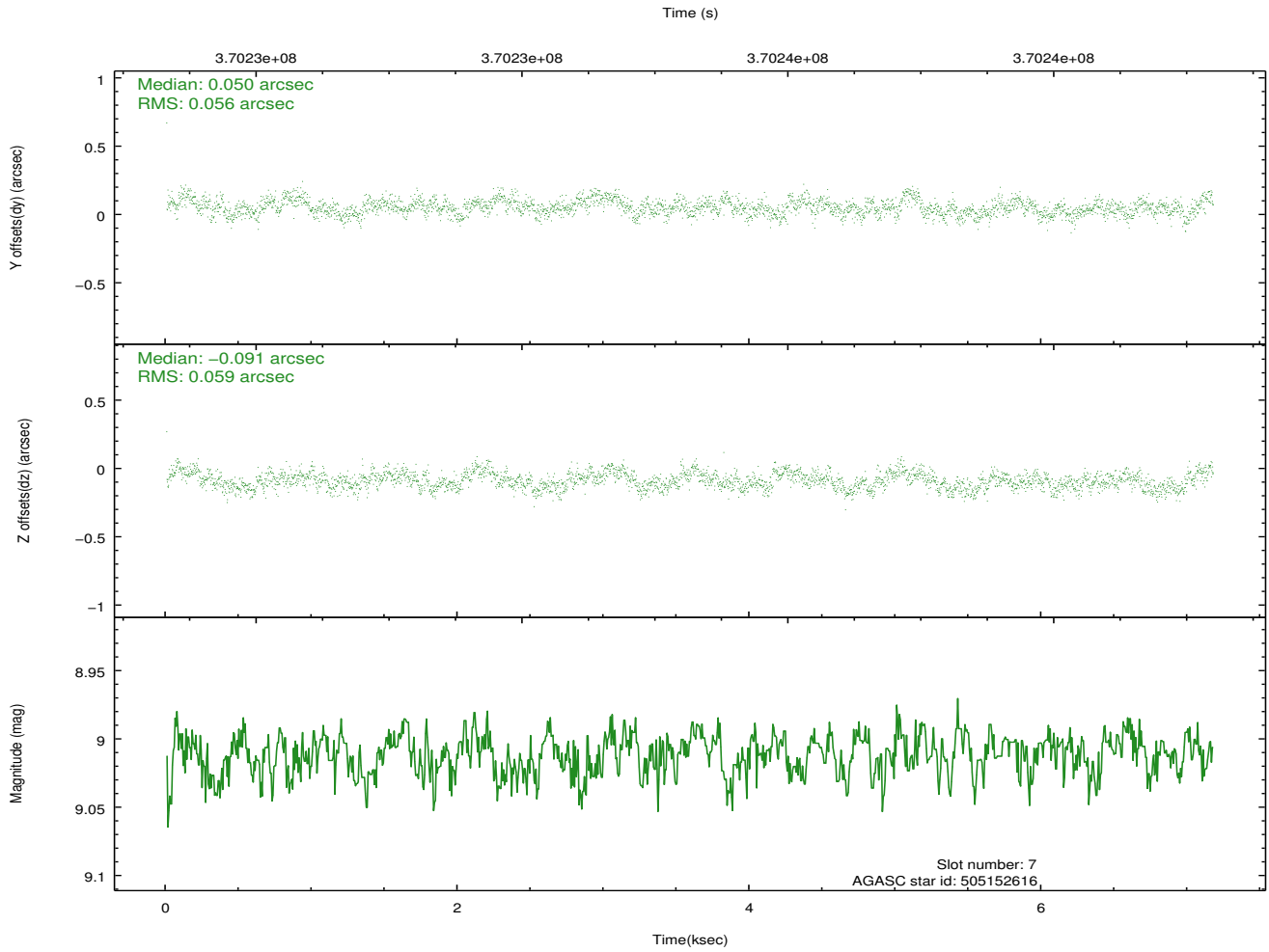
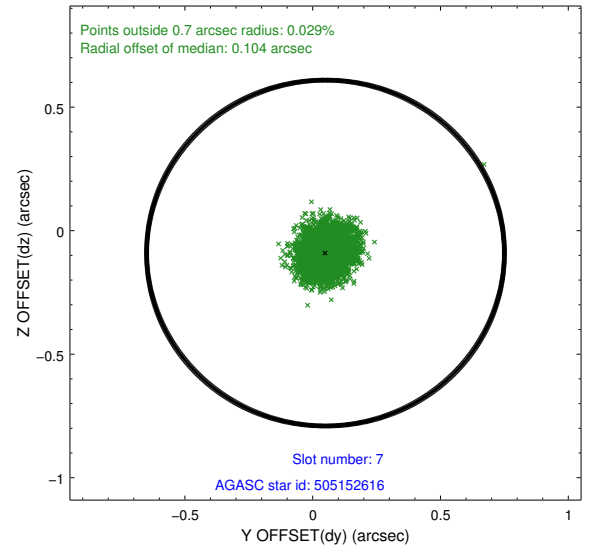
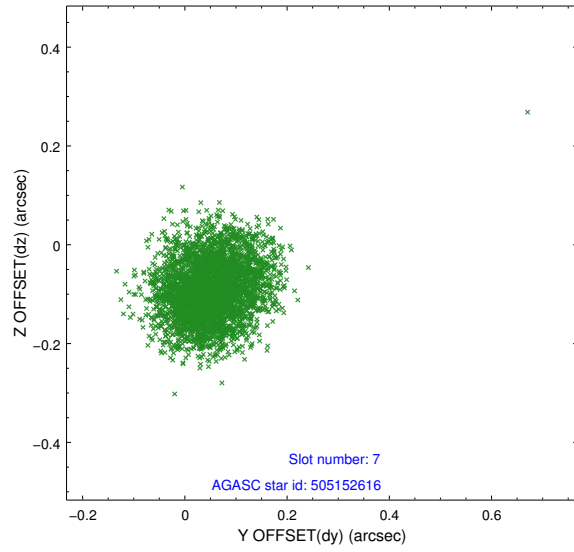
2.4.4 Slot 6



Time (s)

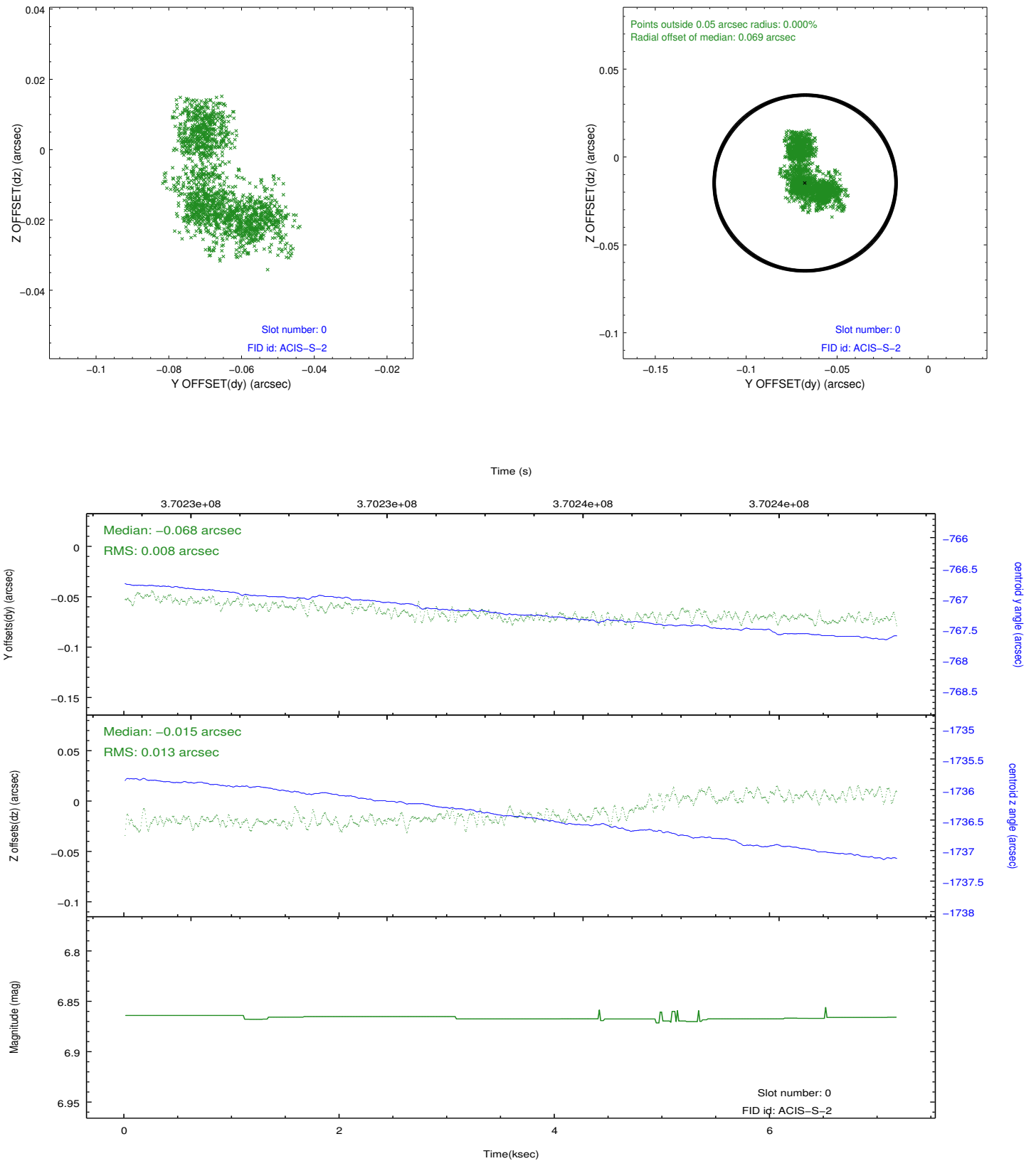


2.4.5 Slot 7

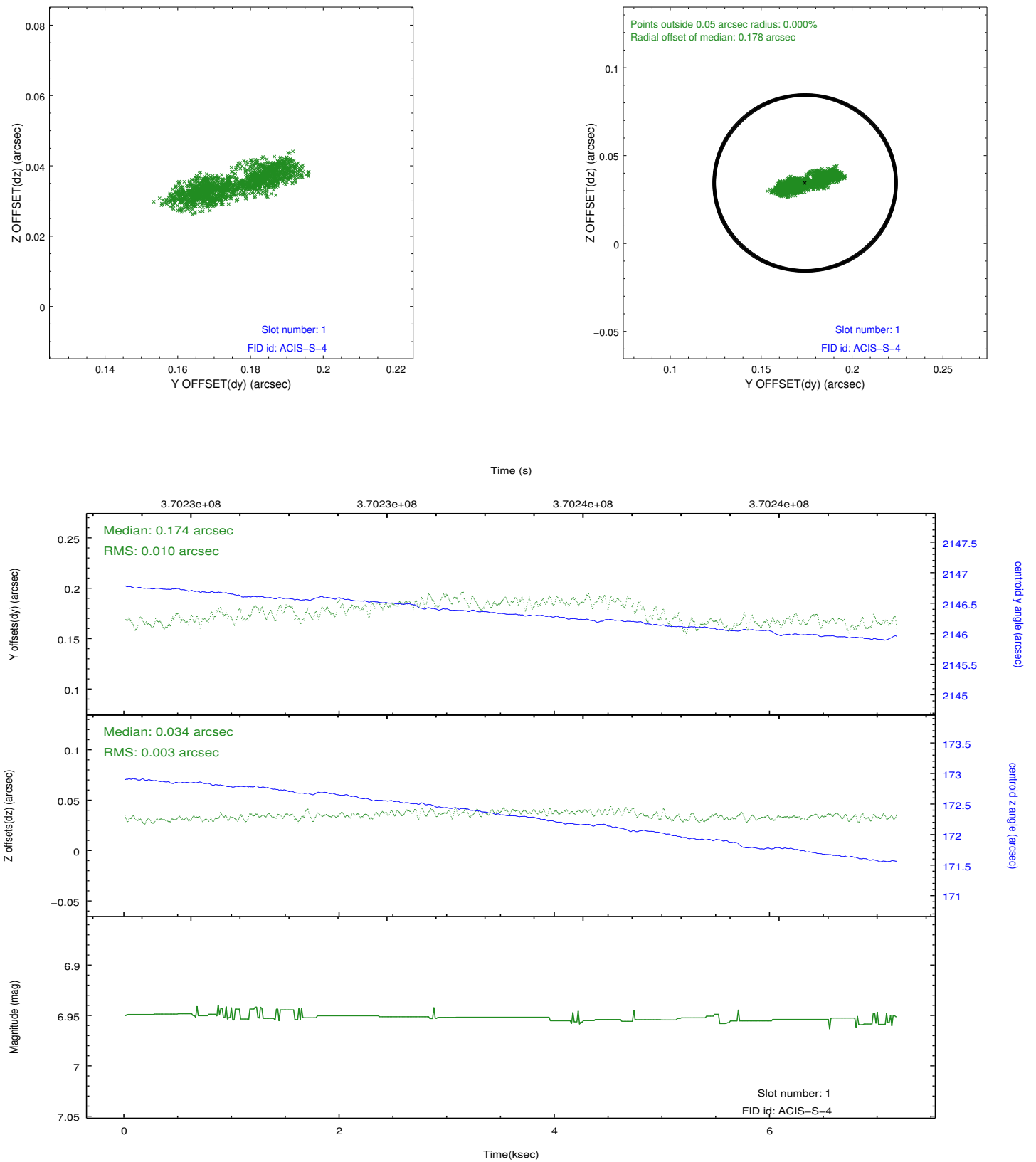


2.5 FID Slots

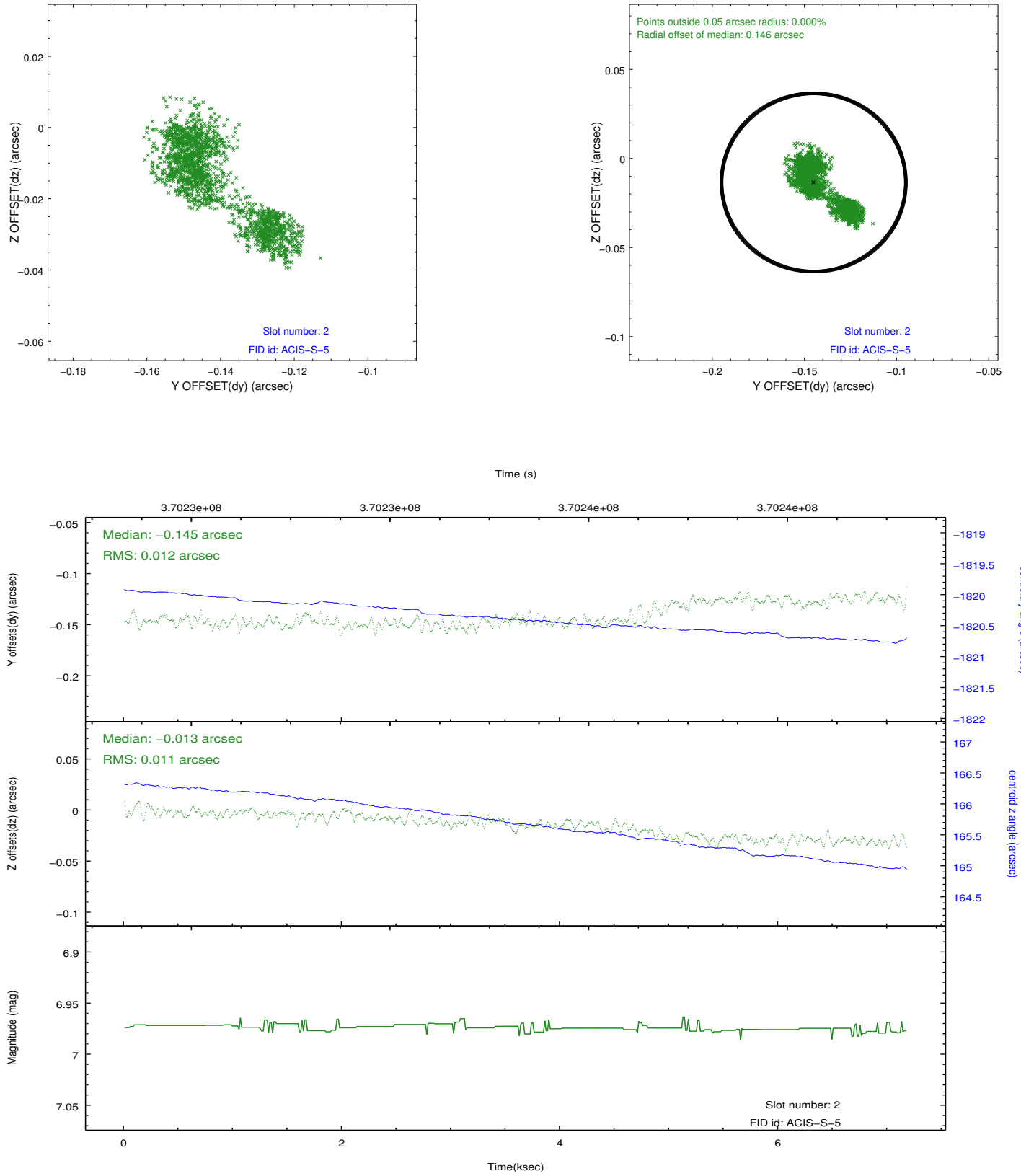
2.5.1 Slot 0



2.5.2 Slot 1



2.5.3 Slot 2



A Summary

A.1 Status

V&V Scientist	Beth Sundheim
V&V Date (YYYY-MM-DD)	2012.06.18
V&V Edition	1
V&V Disposition and Status	OK
V&V Charge Time	7.1641000550985

A.2 Comments