

V&V Reference Report

L2 ASCDS Version : 8.4.4

Observation 10525 - L2 Version 2
Chandra X-Ray Center

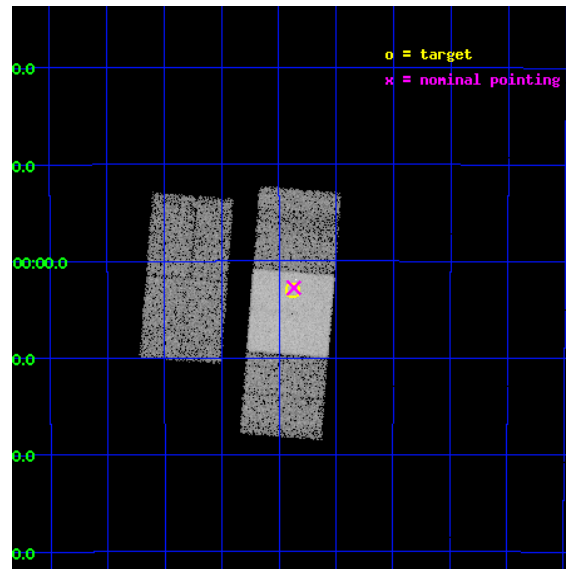
L2 Processing Date : Jun 1 2012

Contents

1	Front	2
2	OBI	3
2.1	OBI	3
2.1.1	Images	3
2.1.2	Bias	3
2.1.3	Parameters	4
2.1.4	Events	4
2.2	Compared Parameters	5
2.3	Aspect	6
2.4	Star Slots	9
2.4.1	Slot 3	9
2.4.2	Slot 4	10
2.4.3	Slot 5	11
2.4.4	Slot 6	12
2.4.5	Slot 7	13
2.5	FID Slots	14
2.5.1	Slot 0	14
2.5.2	Slot 1	15
2.5.3	Slot 2	16
A	Summary	17
A.1	Status	17
A.2	Comments	17

1 Front

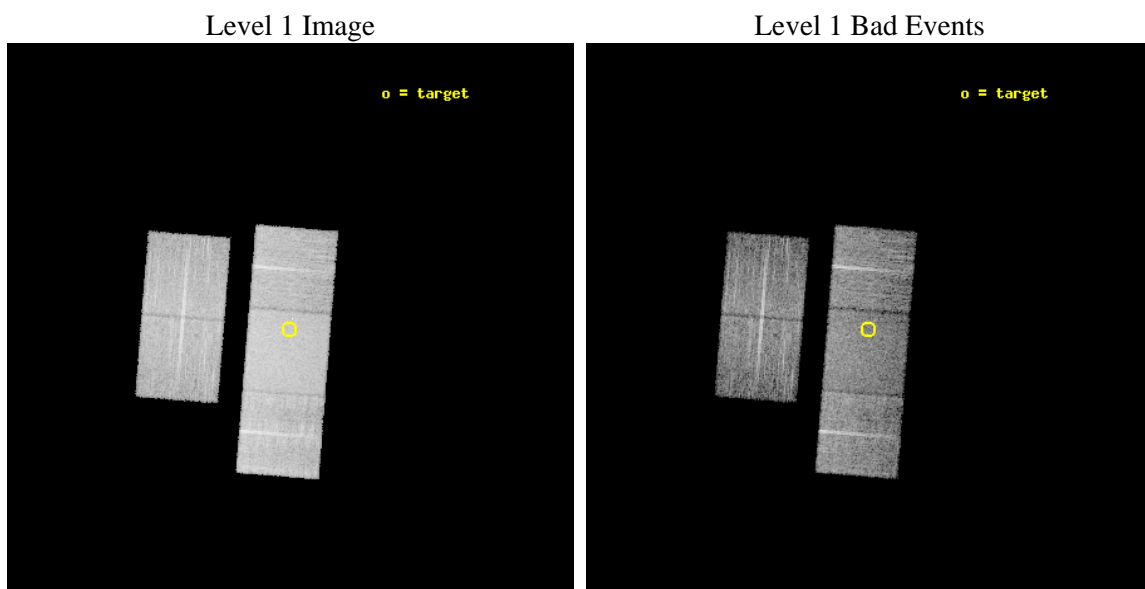
seq_num	900893	Sequence number
obs_id	10525	Observation id
title	ChIcAGO: Chandra Identification of ASCA Galactic Objects	Proposal
observer	Prof. Bryan Gaensler	Principal investigator
object	AX J171922-3703	Source name
dtcycle	0	
cycle	P	events from which exps? Prim/Second/Both
ra_targ	259.845833	Observer's specified target RA [deg]
dec_targ	-37.05	Observer's specified target Dec [deg]
ra_nom	259.84225233872	Nominal RA [deg]
dec_nom	-37.04615434274	Nominal Dec [deg]
roll_nom	94.615689719302	Nominal Roll [deg]
revision	2	Processing version of data
ontime	7751.7354996204	Sum of GTIs [s]
livetime	7650.4533685732	Livetime [s]
ontime2	7751.5713396072	Sum of GTIs [s]
ontime3	7751.6534196138	Sum of GTIs [s]
ontime6	7751.6944596171	Sum of GTIs [s]
ontime7	7751.7354996204	Sum of GTIs [s]
ontime8	7751.6123796105	Sum of GTIs [s]
l2events	83638	Number of level 2 events



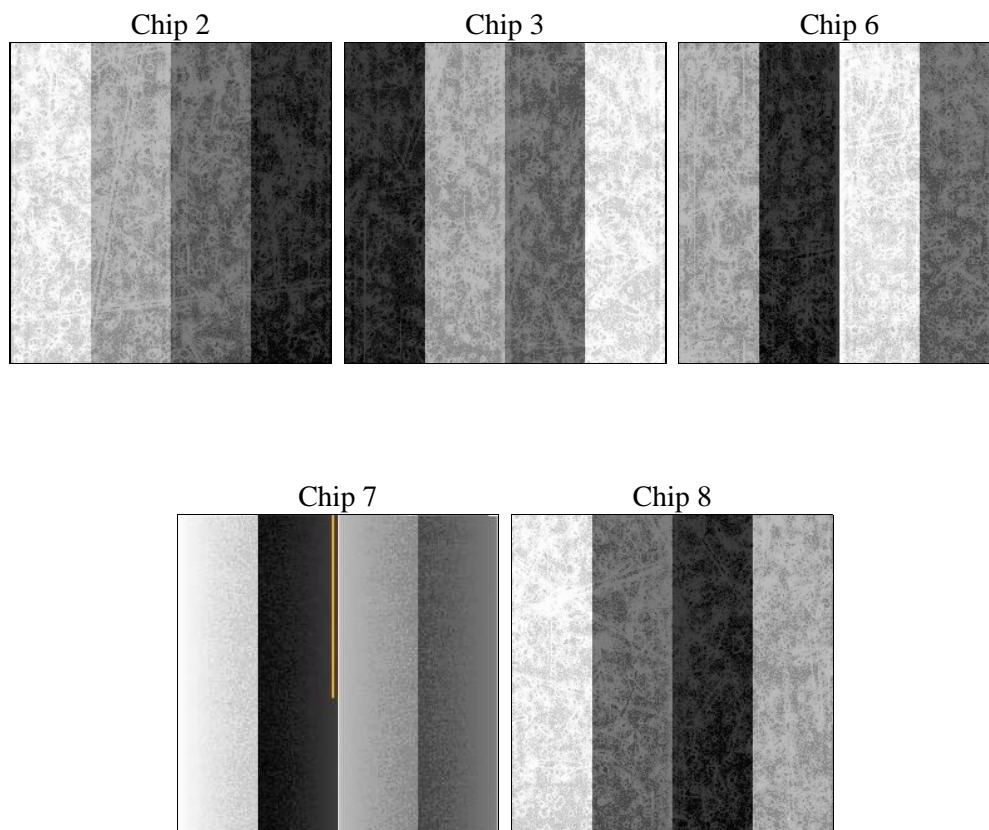
2 OBI

2.1 OBI

2.1.1 Images



2.1.2 Bias



2.1.3 Parameters

obi_num	0	Obi number	sched_exp_time	7716.447000	[s] Scheduled observation exposure time
ascdsver	8.4.4	Processing system revision	ontime	7751.7354996204	Sum of GTIs [s]
caldsver	4.4.9	 	ontime2	7751.5713396072	Sum of GTIs [s]
date	2012-06-01T09:19:00	Date and time of file creation	ontime3	7751.6534196138	Sum of GTIs [s]
revision	2	Processing version of data	ontime6	7751.6944596171	Sum of GTIs [s]
			ontime7	7751.7354996204	Sum of GTIs [s]
			ontime8	7751.6123796105	Sum of GTIs [s]
			l1events	453652	Number of level 1 events

2.1.4 Events

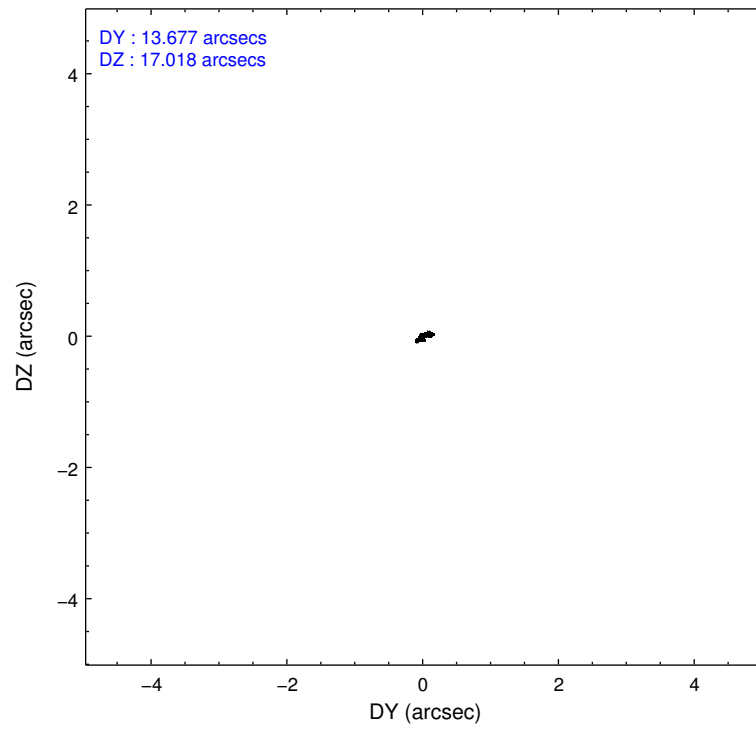
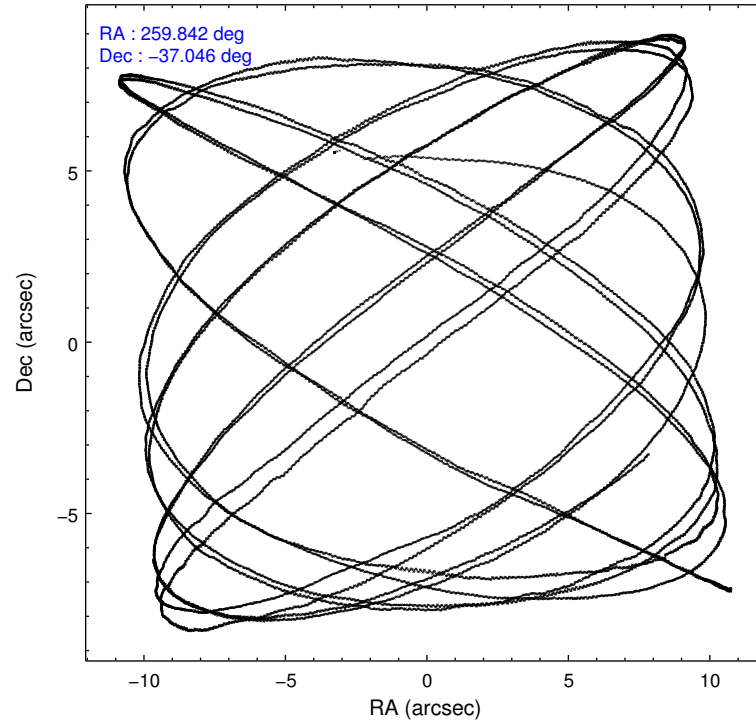
	ccd 2	ccd 3	ccd 6	ccd 7	ccd 8
level 1 events	78247	77808	80986	113286	103325
rejected events	68281	67657	70734	65847	78711
rejected %	87%	86%	87%	58%	76%

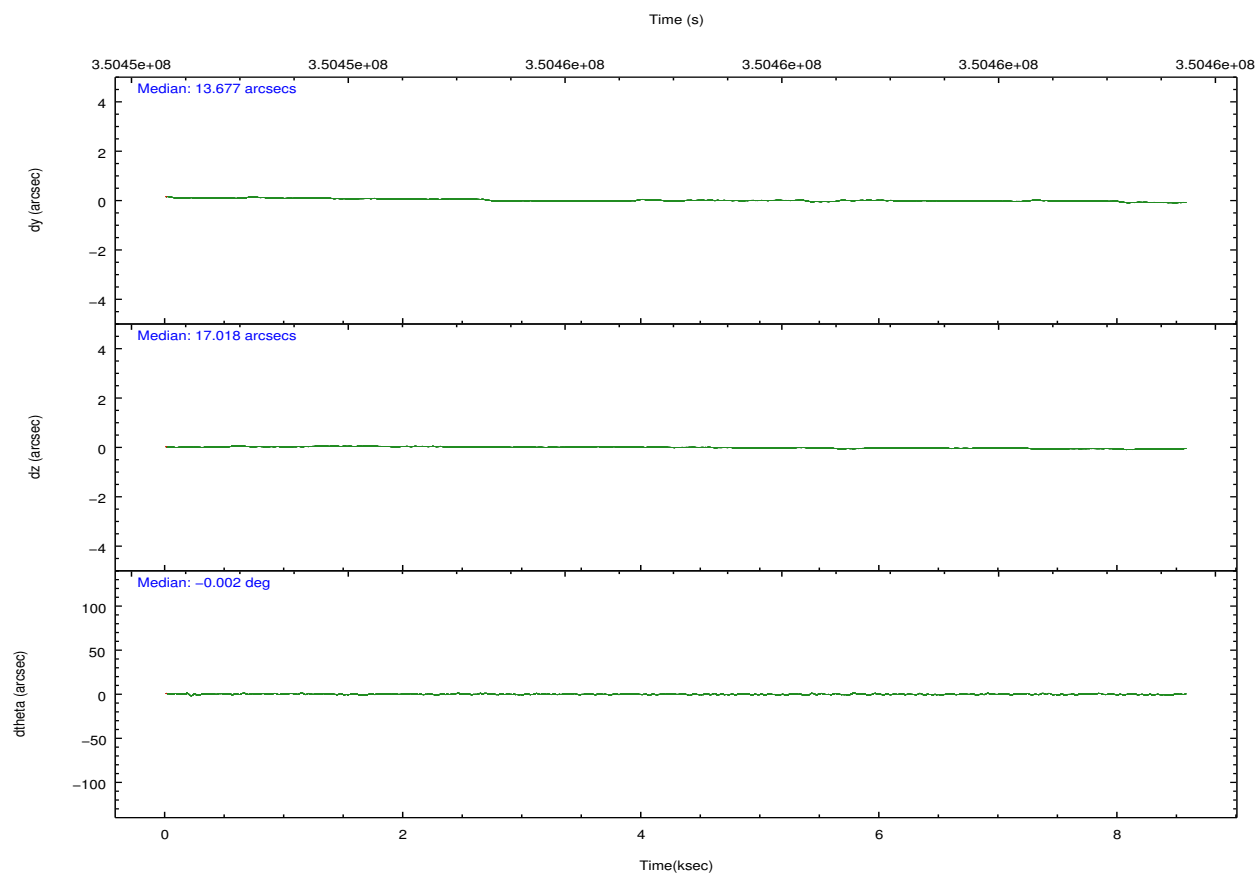
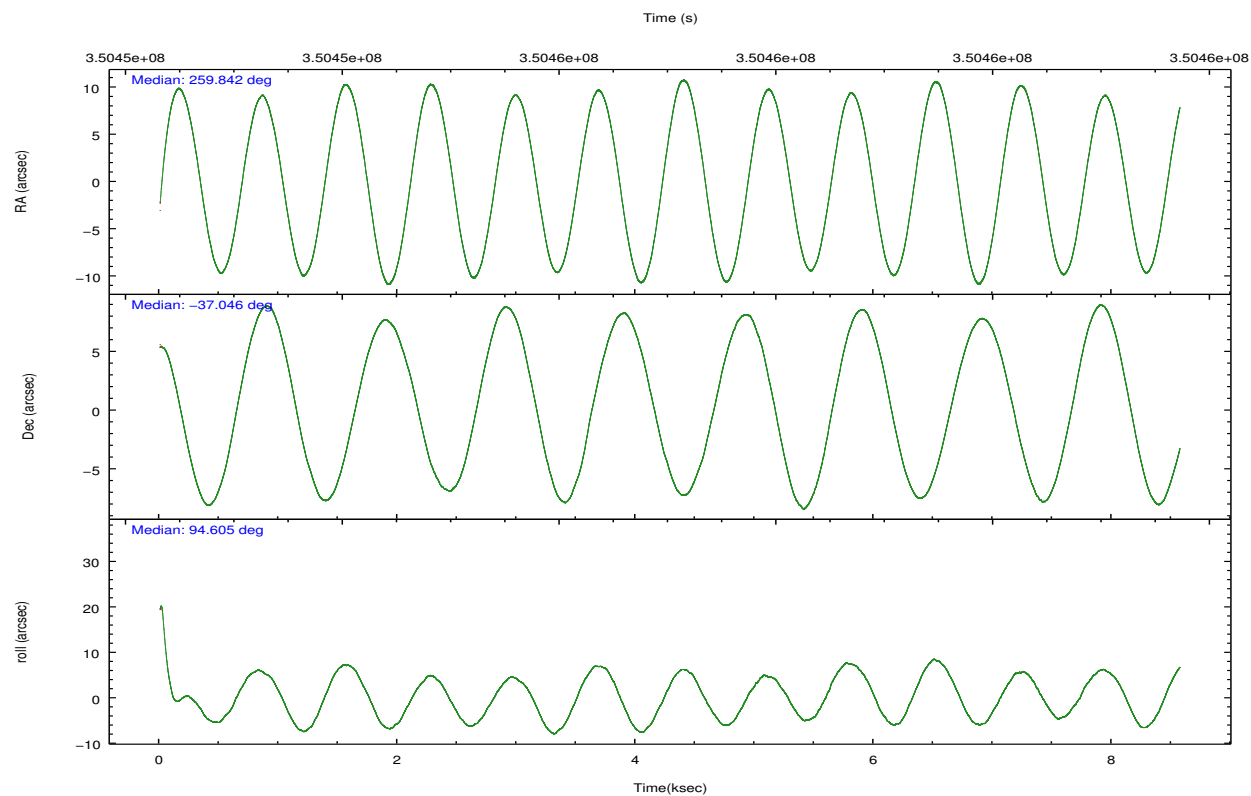
	ccd 2	ccd 3	ccd 6	ccd 7	ccd 8
grade 0 events	4555	4584	4138	3992	7776
	5%	5%	5%	3%	7%
grade 1 events	48	51	53	127	83
	0%	0%	0%	0%	0%
grade 2 events	2134	1996	2225	9732	5616
	2%	2%	2%	8%	5%
grade 3 events	908	909	973	4104	2477
	1%	1%	1%	3%	2%
grade 4 events	829	918	893	4018	2386
	1%	1%	1%	3%	2%
grade 5 events	3277	3839	3882	10536	5360
	4%	4%	4%	9%	5%
grade 6 events	1547	1749	2026	25615	6366
	1%	2%	2%	22%	6%
grade 7 events	64949	63762	66796	55162	73261
	83%	81%	82%	48%	70%

2.2 Compared Parameters

Parameter	Planned	Actual	Parameter	Planned	Actual
Instrument	ACIS	ACIS	Obspar format version number	7	7
Detector	ACIS-23678	ACIS-23678	Obspar file type	PREDICTED	ACTUAL
Grating	NONE	NONE	Obspar update status	NONE	UPDATED
Data mode	FAINT	FAINT	CCD I0 on	N	N
Observation mode	POINTING	POINTING	CCD I1 on	N	N
[deg] Pointing RA	259.862087	259.8422523387238	CCD I2 on	O2	Y
[deg] Pointing Dec	-37.068384	-37.04615434274009	CCD I3 on	O3	Y
[deg] Pointing Roll	94.470985	94.61568971930213	CCD S0 on	N	N
[mm] SIM focus pos	-0.684267	-0.6828225247311905	CCD S1 on	O1	N
[mm] SIM defocus	0	0.001444936568705701	CCD S2 on	O5	Y
[mm] SIM translation stage pos	-190.132523	-190.1425803651734	CCD S3 on	Y	Y
[mm] SIM translation stage offset	0	0.01005778216563158	CCD S4 on	O4	Y
[s] Observation start time (MET)	350453600.184000	350452341.18592	CCD S5 on	N	N
Observation start date	2009-02-08T04:12:14	2009-02-08T03:52:21	Number of optional ACIS chips dropped	1	1
[s] Observation end time (MET)	350461317.184000	350461547.22388	On-chip summing requested	N	N
Observation end date	2009-02-08T06:20:51	2009-02-08T06:25:47	Subarray requested	NONE	NONE
Read mode	TIMED	TIMED	Alternating exposures requested	N	N
			[s] Primary exposure time	0.000000	3.1

2.3 Aspect



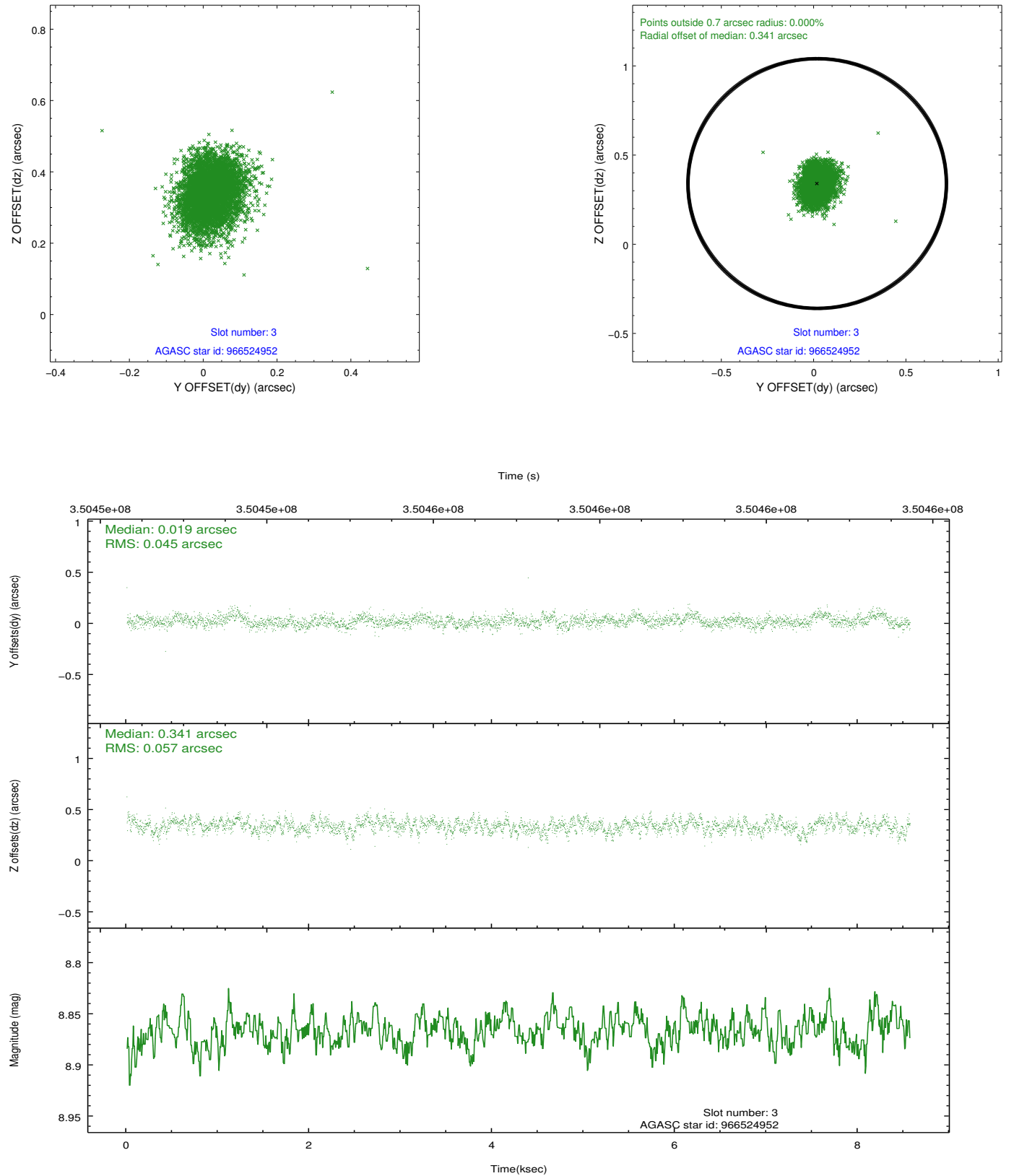


Slot Statistics

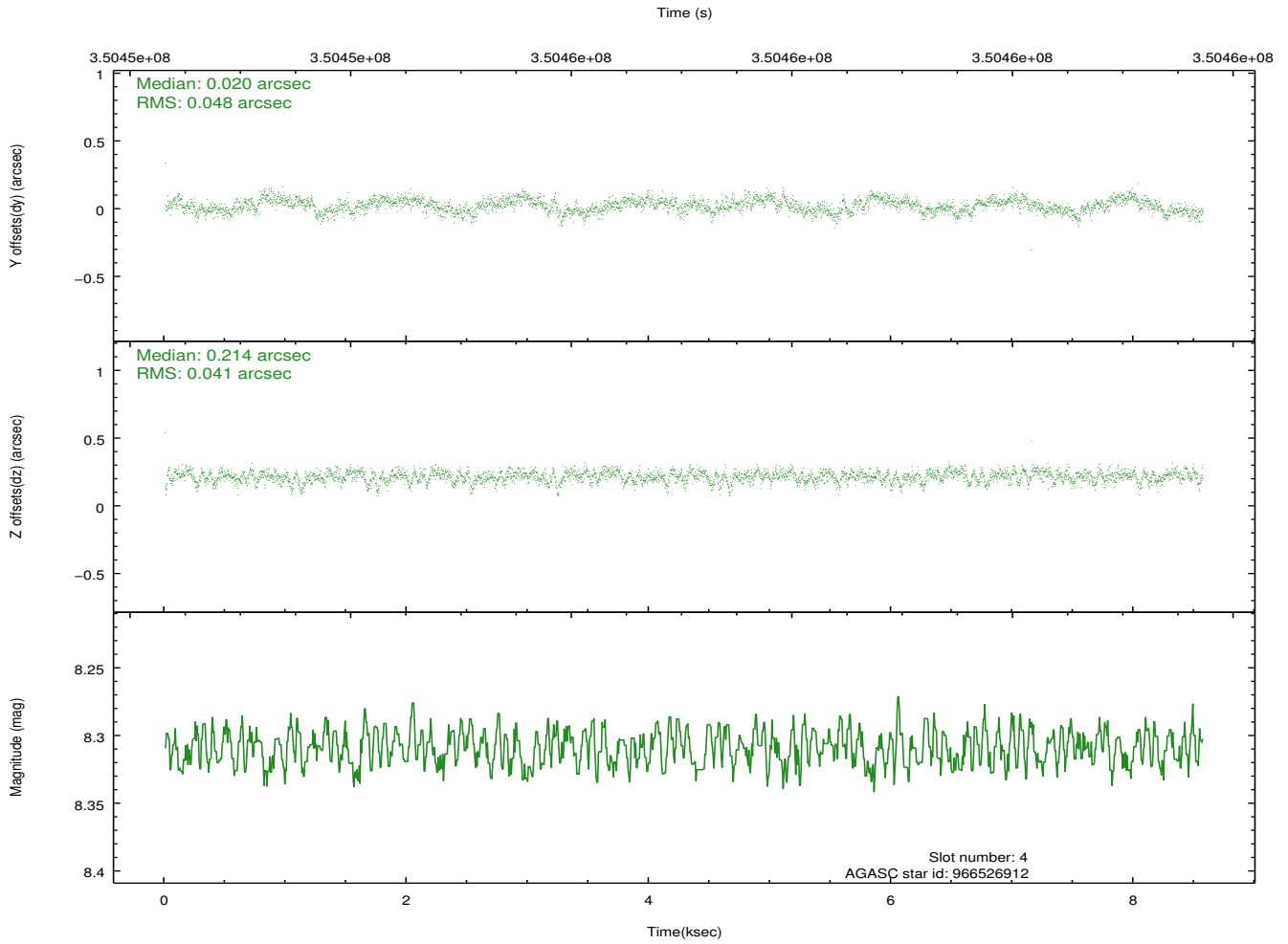
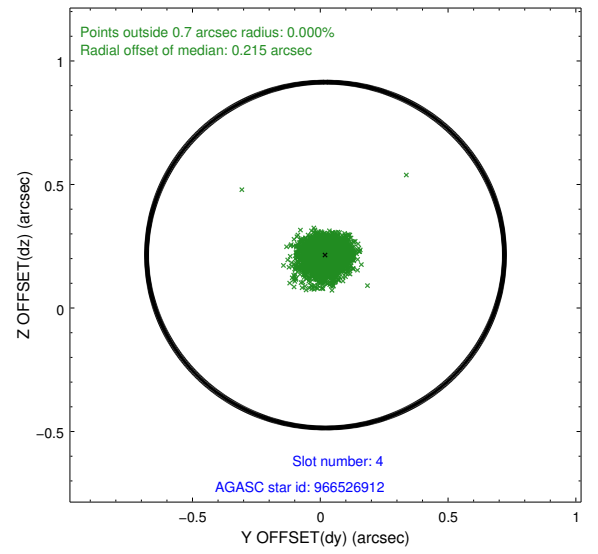
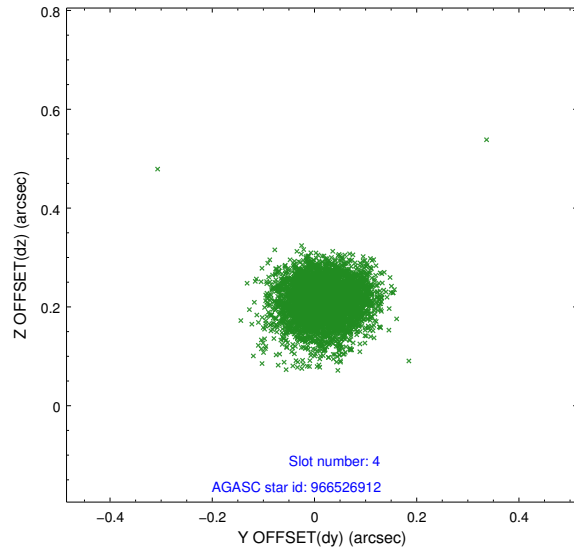
slot	status	id	mag	n_pts	med_dy	med_dz	dr1	dr2	ra	dec	mean_y	mean_z
0	FID	ACIS-S-1	6.96	2090	0.058	-0.049	0.009	0.015	0.000000	0.000000	929.37	-1734.12
1	FID	ACIS-S-2	6.89	2090	-0.124	-0.015	0.007	0.012	0.000000	0.000000	-766.36	-1739.22
2	FID	ACIS-S-4	6.96	2090	0.041	0.070	0.006	0.012	0.000000	0.000000	2146.40	169.43
3	GUIDE	966524952	8.87	4177	0.019	0.341	0.077	0.125	260.699456	-37.437497	-1521.11	-2281.52
4	GUIDE	966526912	8.31	4177	0.020	0.214	0.067	0.106	260.589606	-37.083992	-226.42	-2078.02
5	GUIDE	966527864	8.15	4180	0.118	-0.460	0.076	0.117	259.198901	-37.409371	-1082.54	1986.04
6	GUIDE	966527920	8.35	4179	-0.065	-0.213	0.062	0.103	259.397566	-37.262380	-595.95	1382.06
7	GUIDE	966530544	8.76	4177	-0.097	0.121	0.098	0.159	260.631187	-36.513761	1808.74	-2372.34

2.4 Star Slots

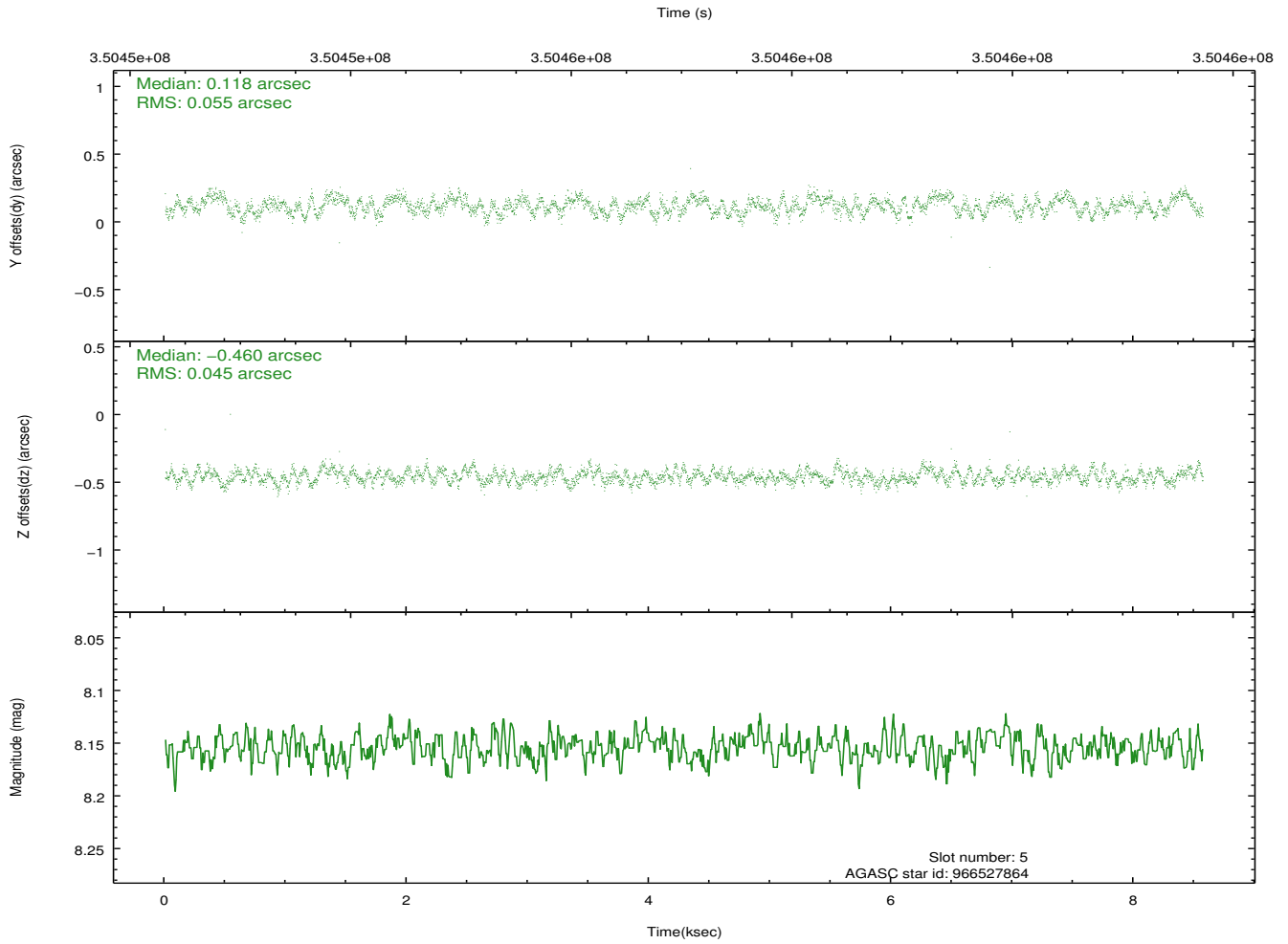
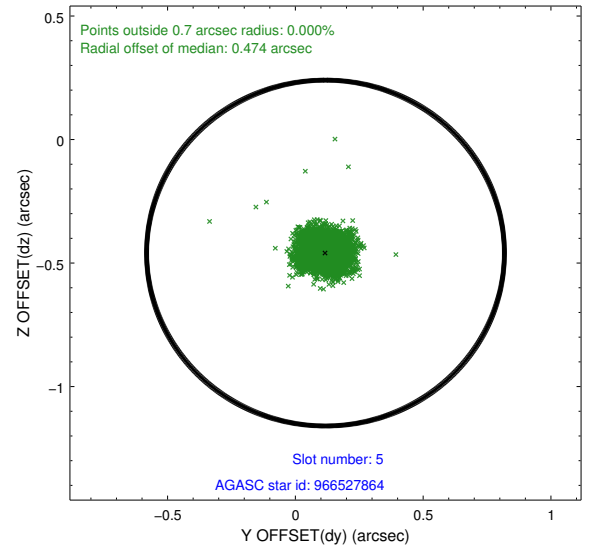
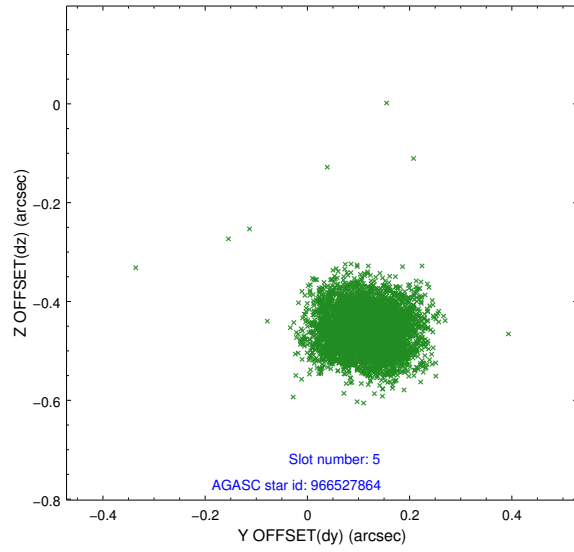
2.4.1 Slot 3



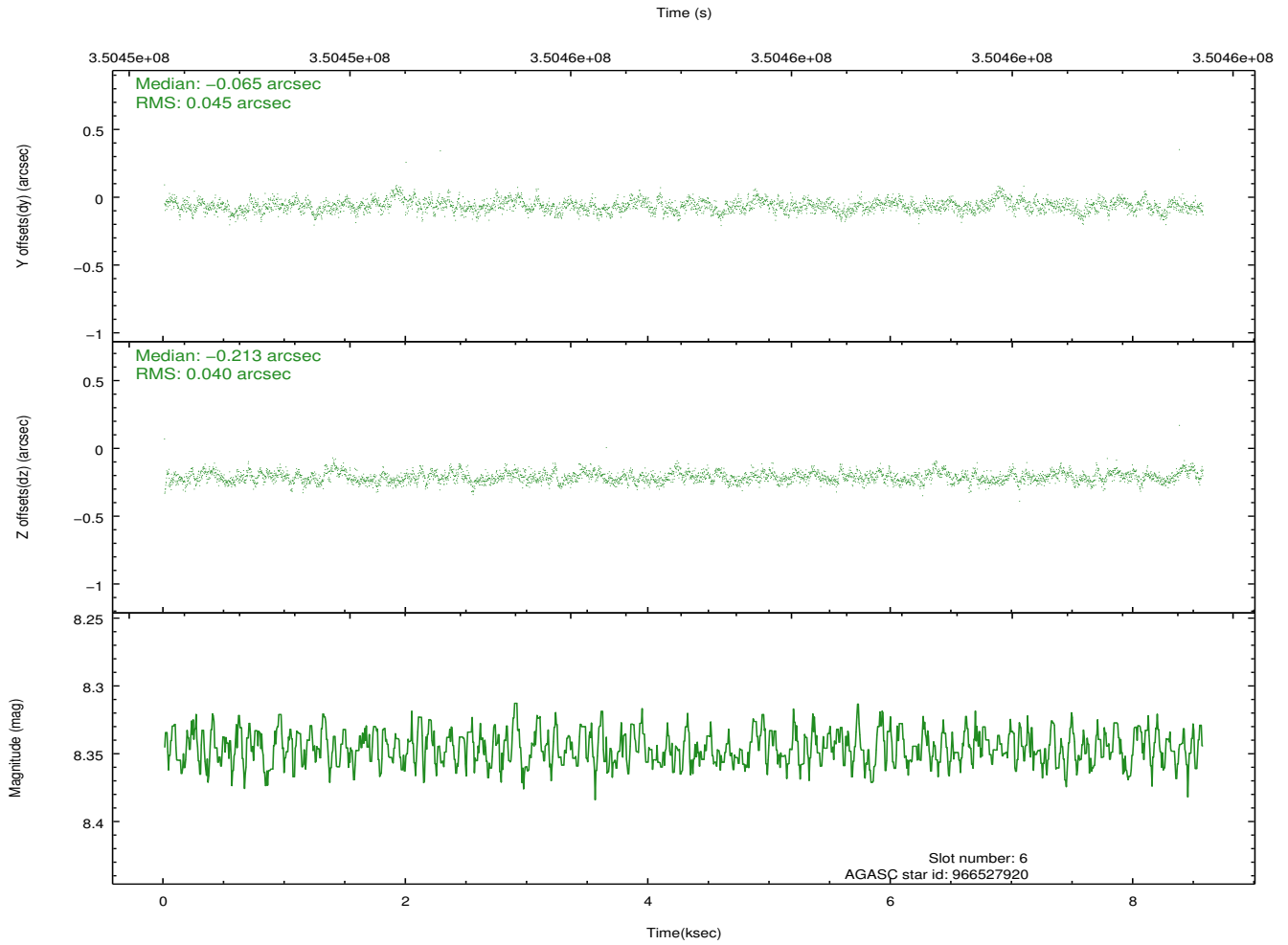
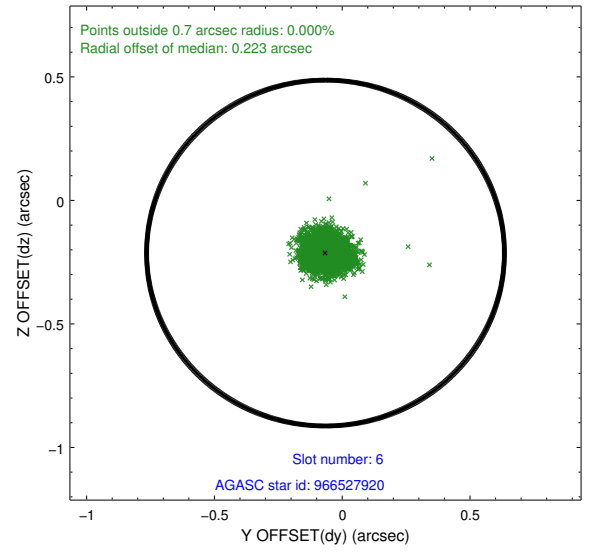
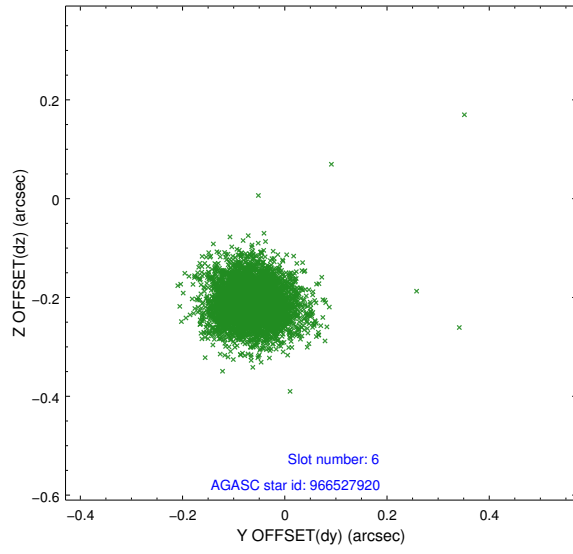
2.4.2 Slot 4



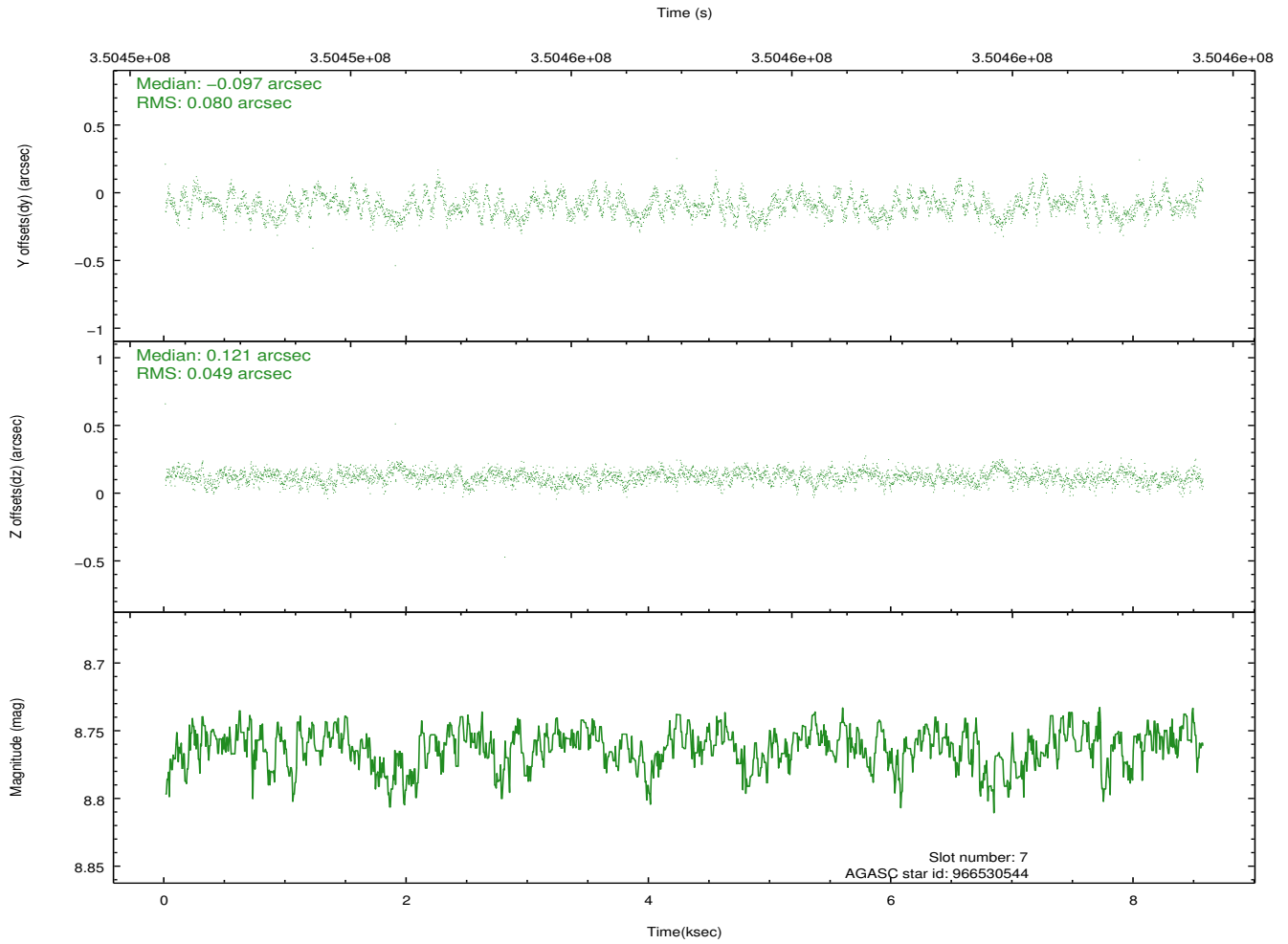
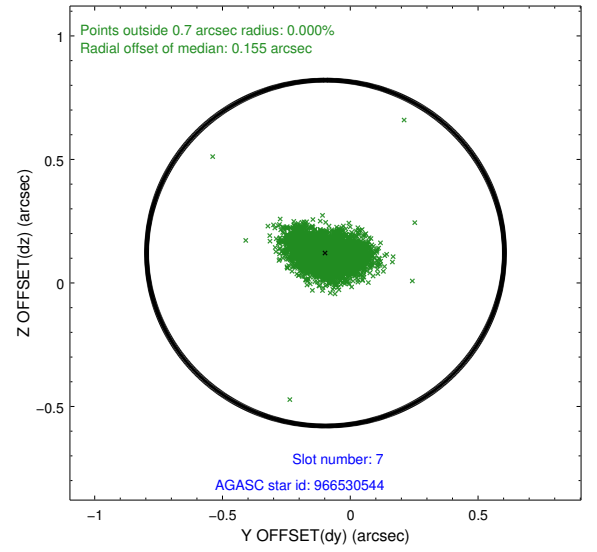
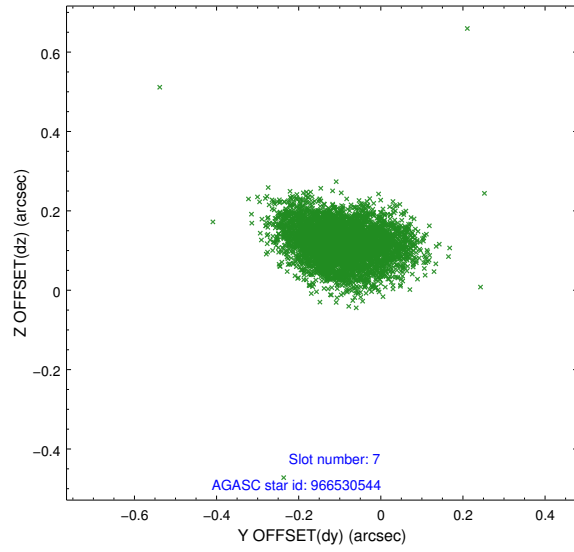
2.4.3 Slot 5



2.4.4 Slot 6

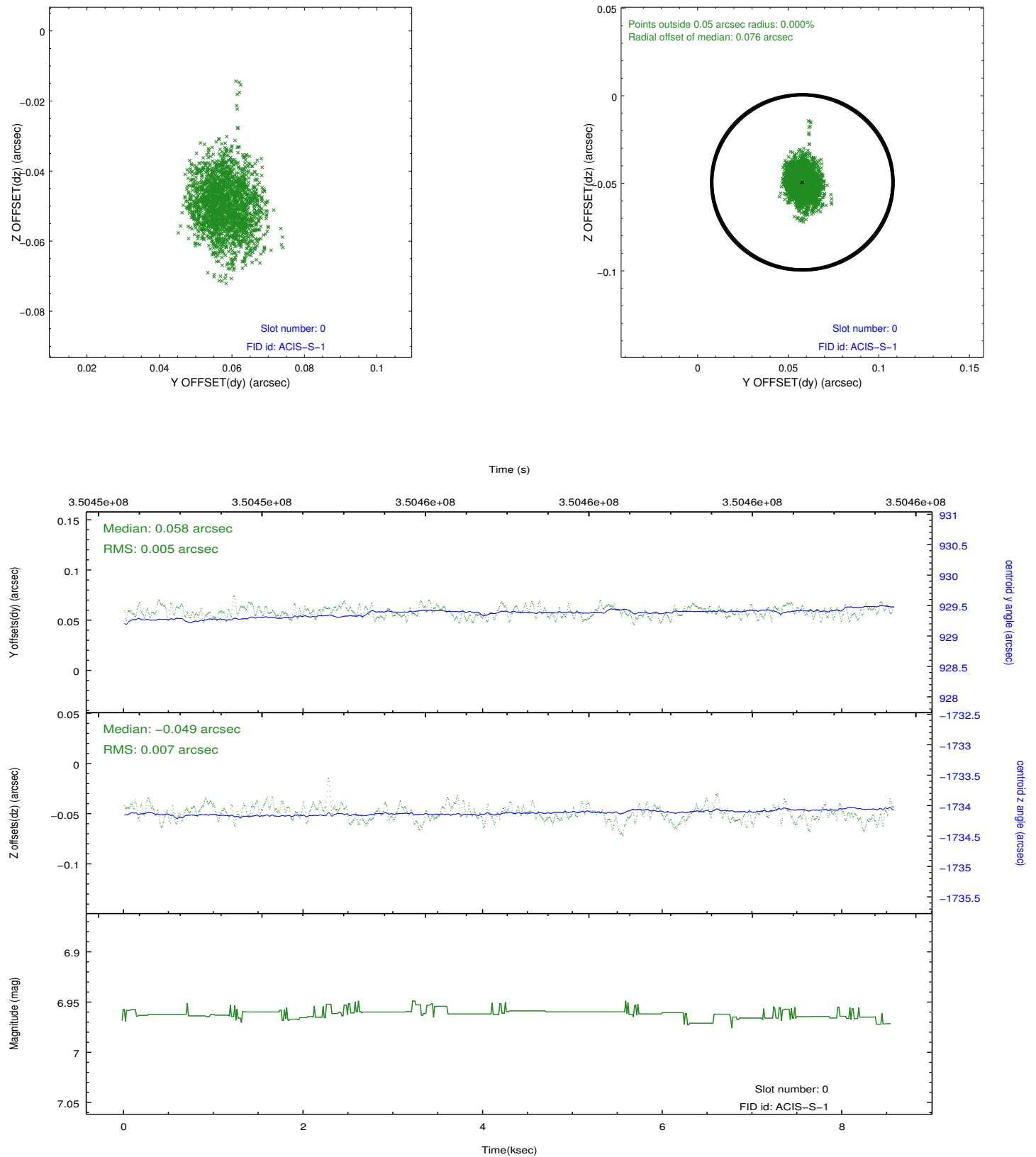


2.4.5 Slot 7

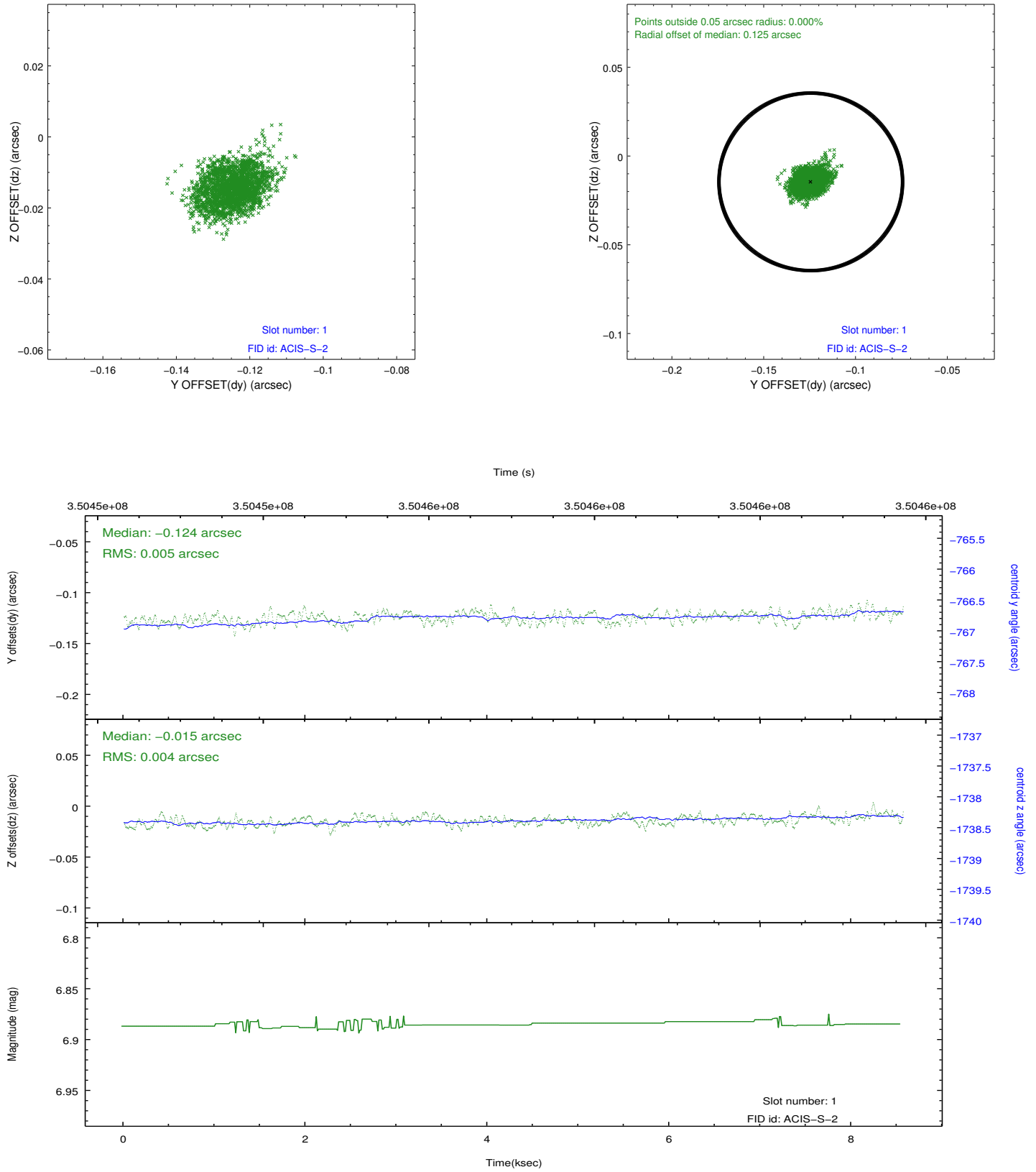


2.5 FID Slots

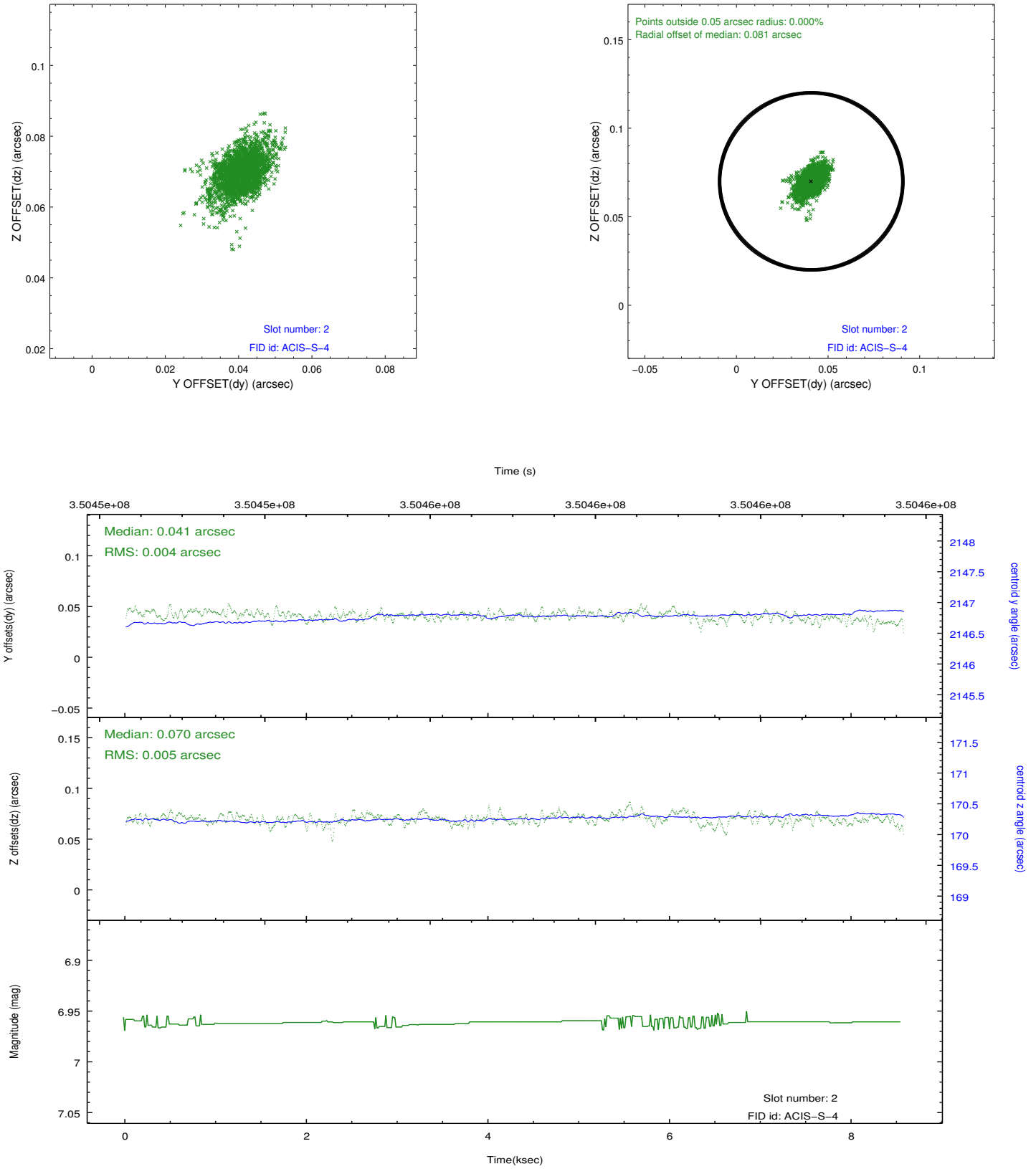
2.5.1 Slot 0



2.5.2 Slot 1



2.5.3 Slot 2



A Summary

A.1 Status

V&V Scientist	Beth Sundheim
V&V Date (YYYY-MM-DD)	2012.06.06
V&V Edition	1
V&V Disposition and Status	OK
V&V Charge Time	7.75310005

A.2 Comments