

V&V Reference Report

L2 ASCDS Version : 8.4.4

Observation 10524 - L2 Version 2
Chandra X-Ray Center

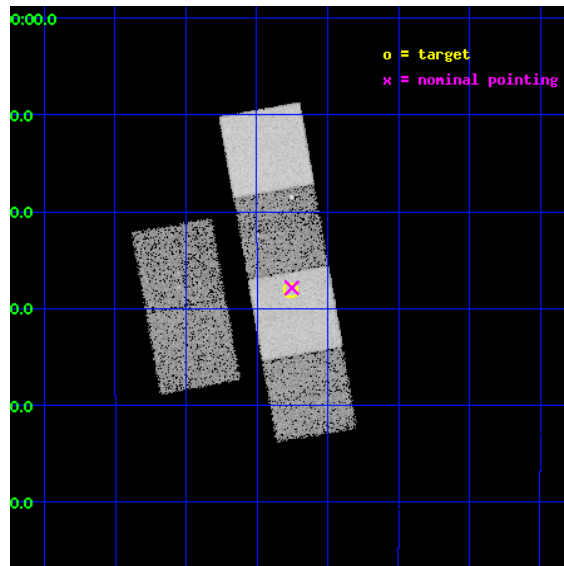
L2 Processing Date : May 30 2012

Contents

1	Front	2
2	OBI	3
2.1	OBI	3
2.1.1	Images	3
2.1.2	Bias	3
2.1.3	Parameters	4
2.1.4	Events	4
2.2	Compared Parameters	5
2.3	Aspect	6
2.4	Star Slots	9
2.4.1	Slot 3	9
2.4.2	Slot 4	10
2.4.3	Slot 5	11
2.4.4	Slot 6	12
2.4.5	Slot 7	13
2.5	FID Slots	14
2.5.1	Slot 0	14
2.5.2	Slot 1	15
2.5.3	Slot 2	16
A	Summary	17
A.1	Status	17
A.2	Comments	17

1 Front

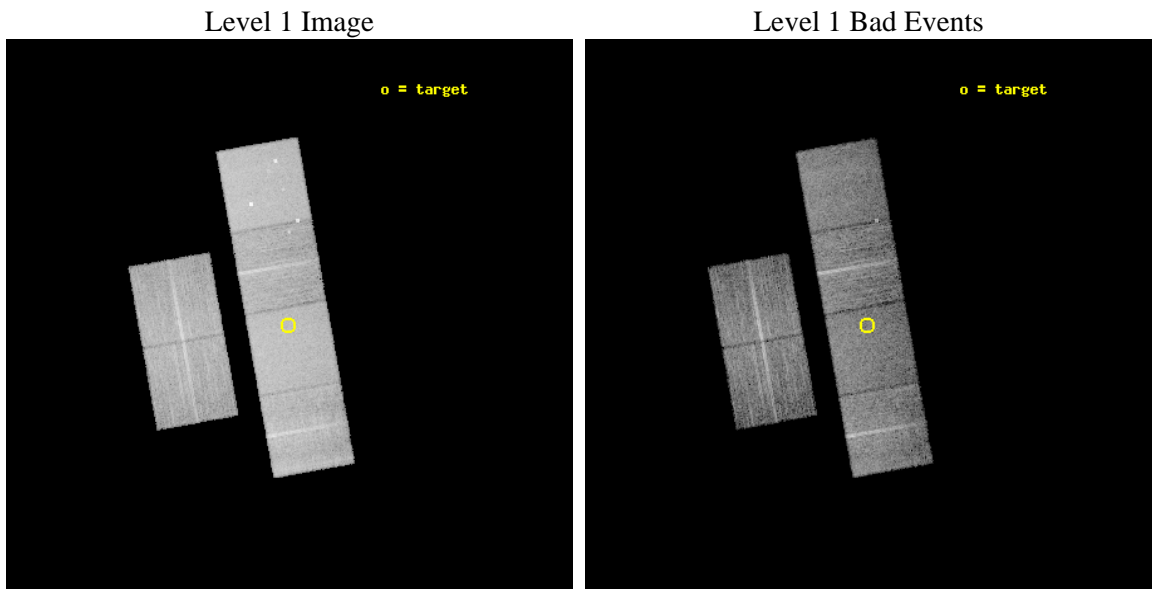
seq_num	900892	Sequence number
obs_id	10524	Observation id
title	ChIcAGO: Chandra Identification of ASCA Galactic Objects	Proposal
observer	Prof. Bryan Gaensler	Principal investigator
object	AX J183345-0828	Source name
dtcycle	0	
cycle	P	events from which exps? Prim/Second/Both
ra_targ	278.44	Observer's specified target RA [deg]
dec_targ	-8.469	Observer's specified target Dec [deg]
ra_nom	278.43818080889	Nominal RA [deg]
dec_nom	-8.4644880525936	Nominal Dec [deg]
roll_nom	79.872357163471	Nominal Roll [deg]
revision	2	Processing version of data
ontime	8126.6912429333	Sum of GTIs [s]
livetime	8023.7861851093	Livetime [s]
ontime2	8126.7322829366	Sum of GTIs [s]
ontime3	8126.5681229234	Sum of GTIs [s]
ontime5	8126.65020293	Sum of GTIs [s]
ontime6	8126.6091629267	Sum of GTIs [s]
ontime7	8126.6912429333	Sum of GTIs [s]
ontime8	8120.0450029373	Sum of GTIs [s]
l2events	144177	Number of level 2 events



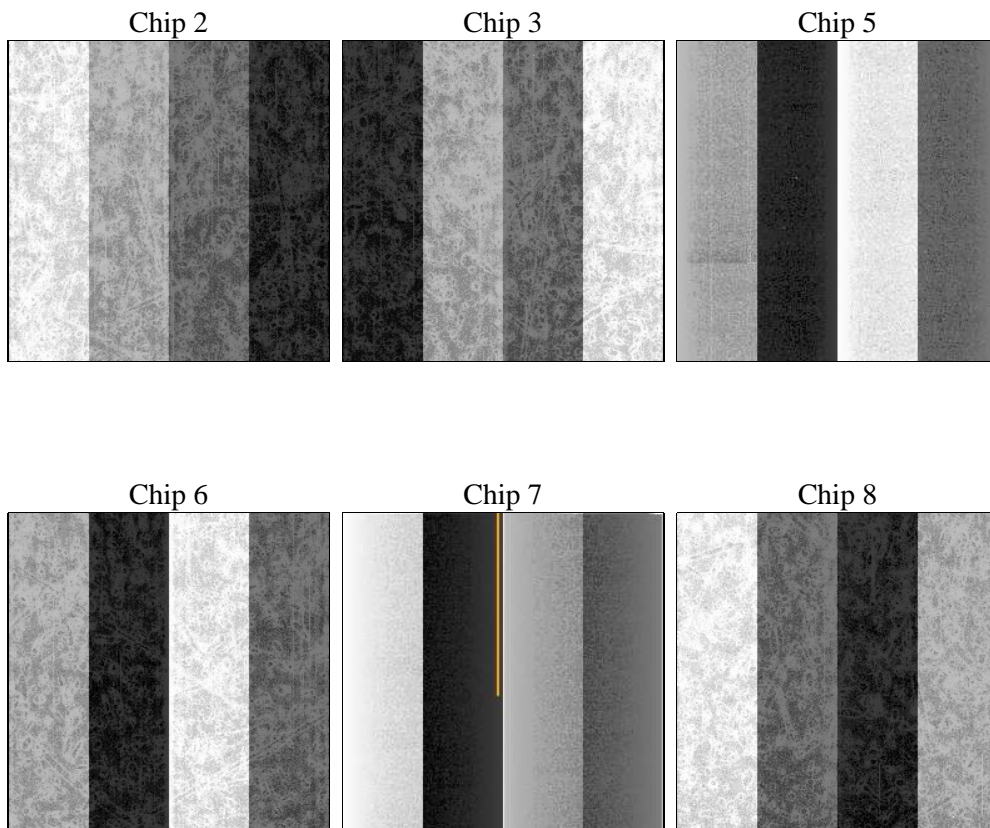
2 OBI

2.1 OBI

2.1.1 Images



2.1.2 Bias



2.1.3 Parameters

obi_num	0	Obi number	sched_exp_time	8369.460000	[s] Scheduled observation exposure time
ascdsver	8.4.4	Processing system revision	ontime	8126.6912429333	Sum of GTIs [s]
caldsver	4.4.9	 	ontime2	8126.7322829366	Sum of GTIs [s]
date	2012-05-30T23:48:28	Date and time of file creation	ontime3	8126.5681229234	Sum of GTIs [s]
revision	2	Processing version of data	ontime5	8126.65020293	Sum of GTIs [s]
			ontime6	8126.6091629267	Sum of GTIs [s]
			ontime7	8126.6912429333	Sum of GTIs [s]
			ontime8	8120.0450029373	Sum of GTIs [s]
			l1events	614711	Number of level 1 events

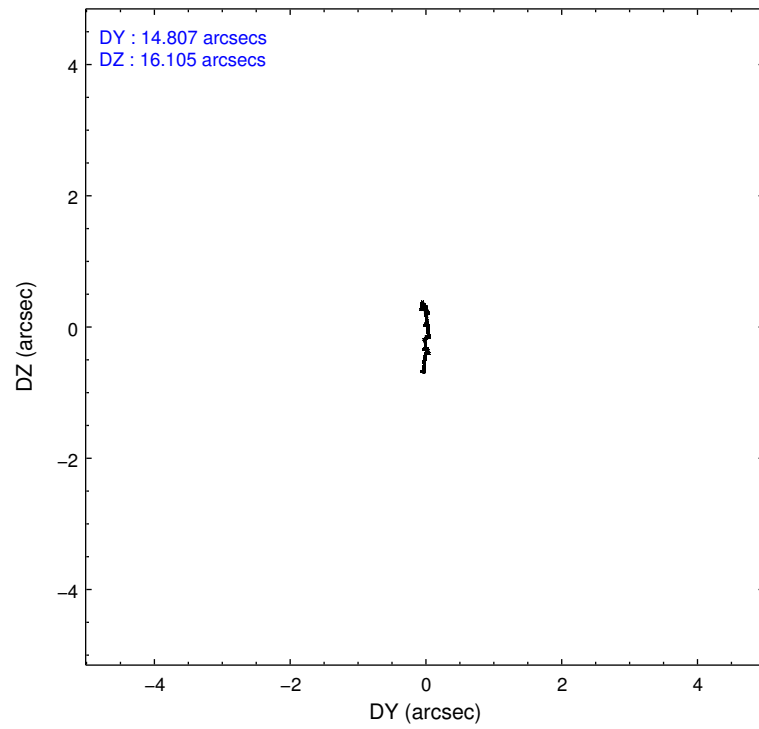
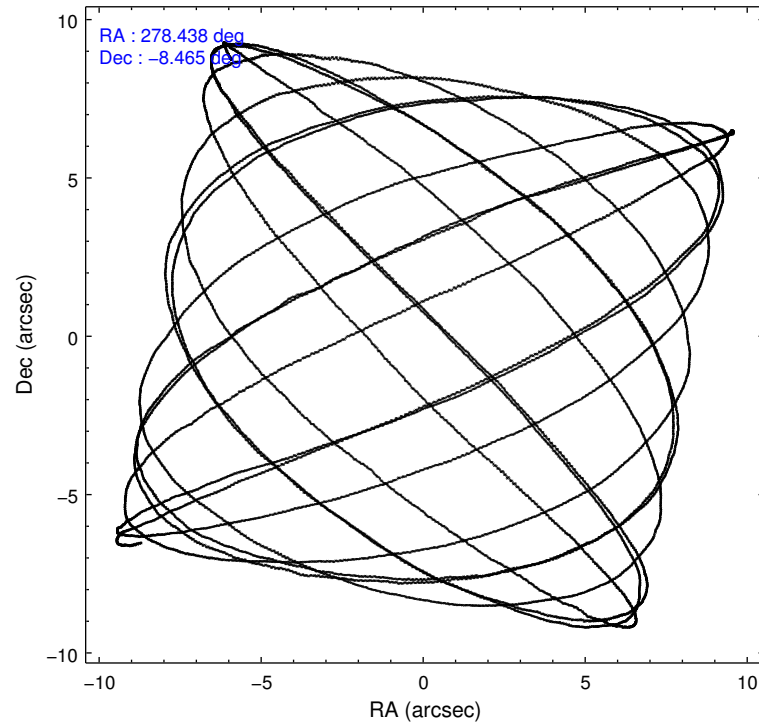
2.1.4 Events

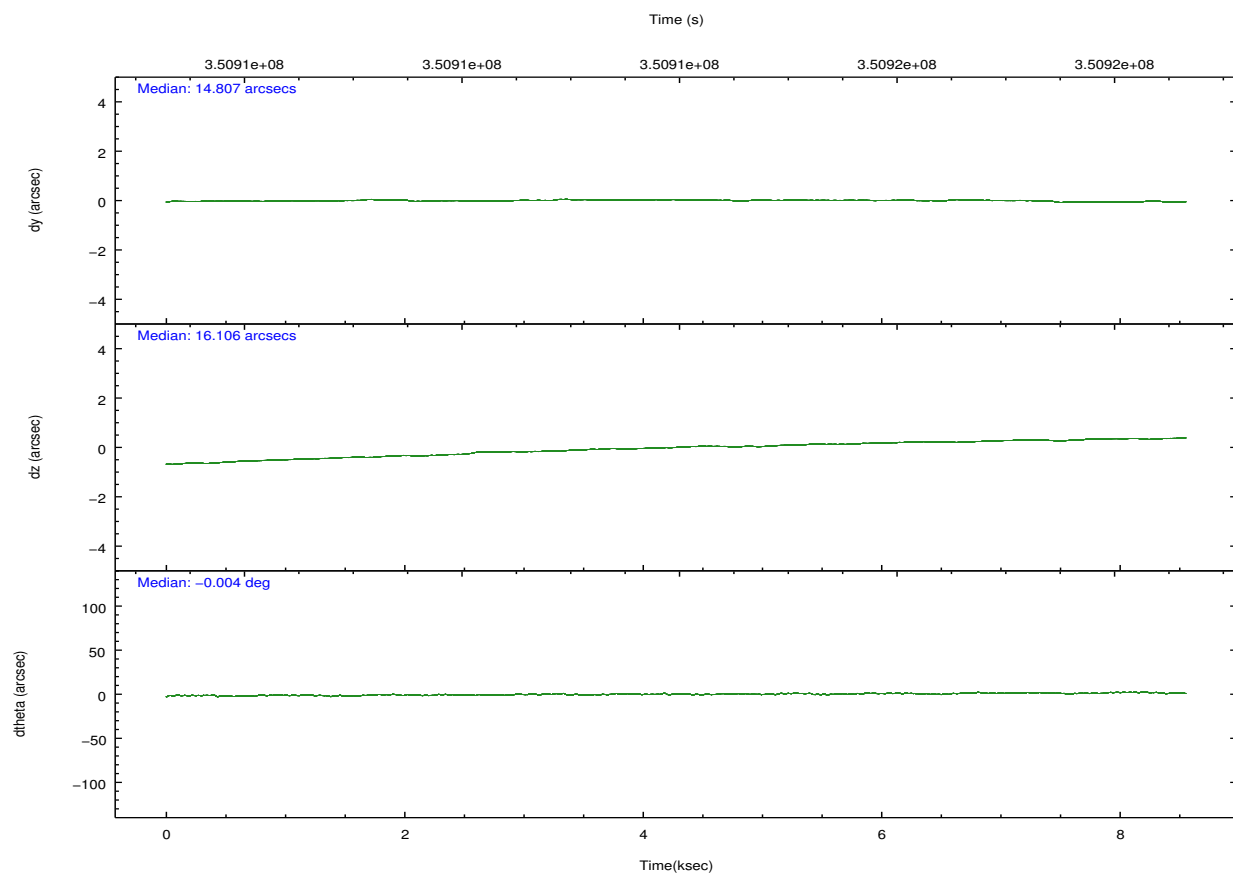
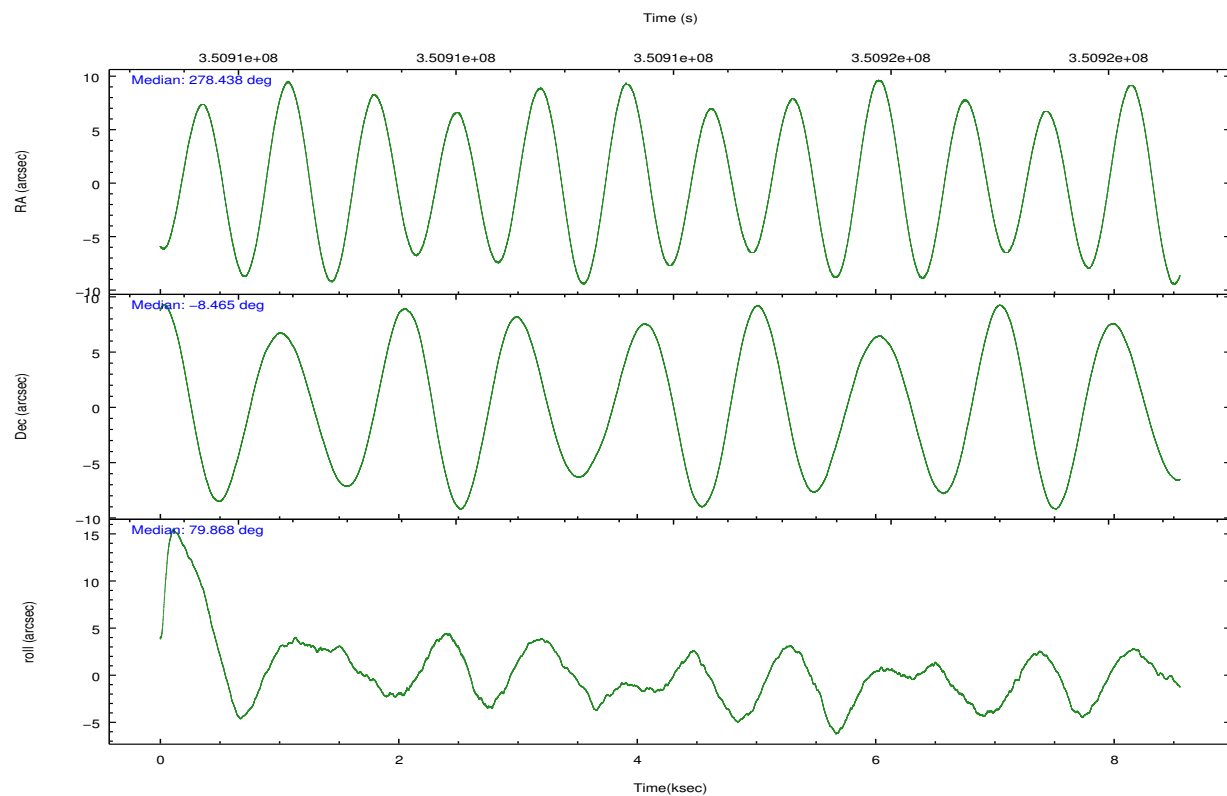
	ccd 2	ccd 3	ccd 5	ccd 6	ccd 7	ccd 8		ccd 2	ccd 3	ccd 5	ccd 6	ccd 7	ccd 8
level 1 events	87318	81070	133612	86920	118482	107309	grade 0 events	4543	4548	6393	4633	4201	8149
rejected events	77013	70745	71473	75765	69011	81940		5%	5%	4%	5%	3%	7%
rejected %	88%	87%	53%	87%	58%	76%	grade 1 events	78	53	428	55	98	102
								0%	0%	0%	0%	0%	0%
							grade 2 events	2258	2130	19018	2374	10142	5639
								2%	2%	14%	2%	8%	5%
							grade 3 events	919	972	2161	973	4151	2665
								1%	1%	1%	1%	3%	2%
							grade 4 events	912	969	2111	921	3929	2383
								1%	1%	1%	1%	3%	2%
							grade 5 events	3416	3954	9217	3976	10972	5187
								3%	4%	6%	4%	9%	4%
							grade 6 events	1681	1715	32517	2269	27085	6541
								1%	2%	24%	2%	22%	6%
							grade 7 events	73511	66729	61767	71719	57904	76643
								84%	82%	46%	82%	48%	71%

2.2 Compared Parameters

Parameter	Planned	Actual	Parameter	Planned	Actual
Instrument	ACIS	ACIS	Obspar format version number	7	7
Detector	ACIS-235678	ACIS-235678	Obspar file type	PREDICTED	ACTUAL
Grating	NONE	NONE	Obspar update status	NONE	UPDATED
Data mode	FAINT	FAINT	CCD I0 on	N	N
Observation mode	POINTING	POINTING	CCD I1 on	N	N
[deg] Pointing RA	278.447947	278.4381808088852	CCD I2 on	O2	Y
[deg] Pointing Dec	-8.490079	-8.464488052593611	CCD I3 on	O3	Y
[deg] Pointing Roll	79.717175	79.8723571634706	CCD S0 on	N	N
[mm] SIM focus pos	-0.684267	-0.6828225247311905	CCD S1 on	O1	Y
[mm] SIM defocus	0	0.001444936568705701	CCD S2 on	O5	Y
[mm] SIM translation stage pos	-190.132523	-190.1425803651734	CCD S3 on	Y	Y
[mm] SIM translation stage offset	0	0.01005778216563158	CCD S4 on	O4	Y
[s] Observation start time (MET)	350909879.184000	350909420.99609	CCD S5 on	N	N
Observation start date	2009-02-13T10:56:53	2009-02-13T10:50:20	Number of optional ACIS chips dropped	0	0
[s] Observation end time (MET)	350918249.184000	350918474.30904	On-chip summing requested	N	N
Observation end date	2009-02-13T13:16:23	2009-02-13T13:21:14	Subarray requested	NONE	NONE
Read mode	TIMED	TIMED	Alternating exposures requested	N	N
			[s] Primary exposure time	0.000000	3.2

2.3 Aspect



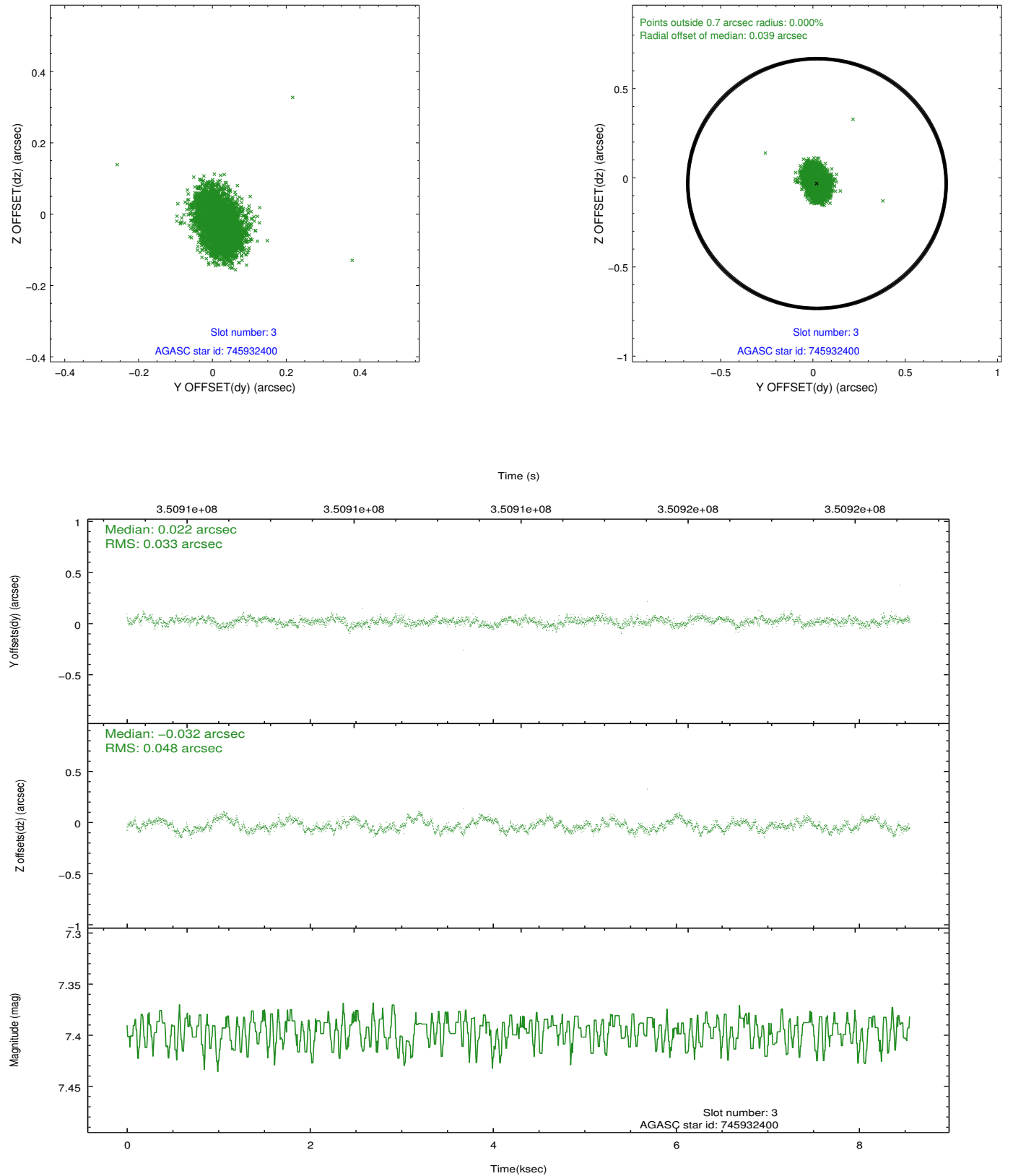


Slot Statistics

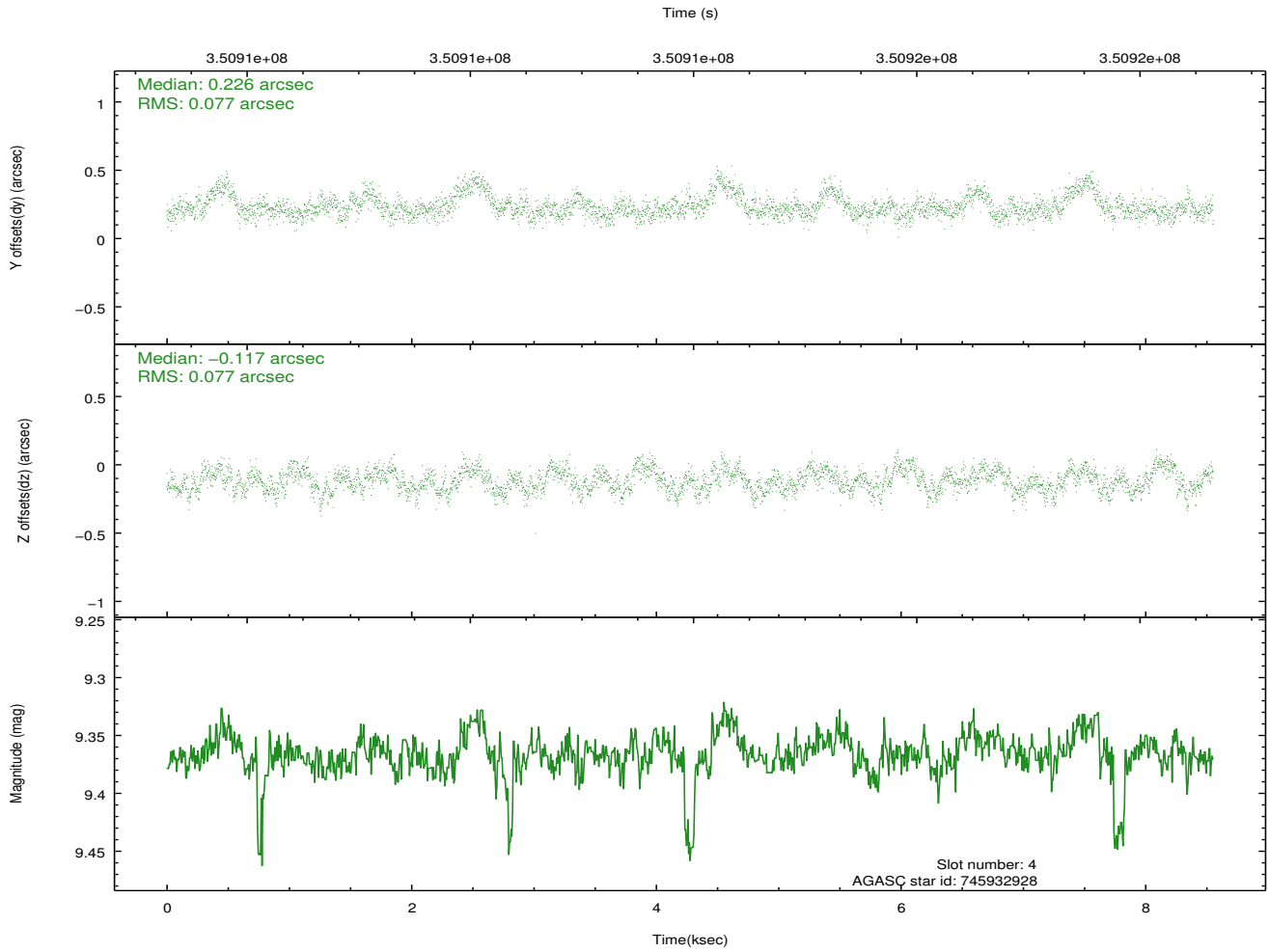
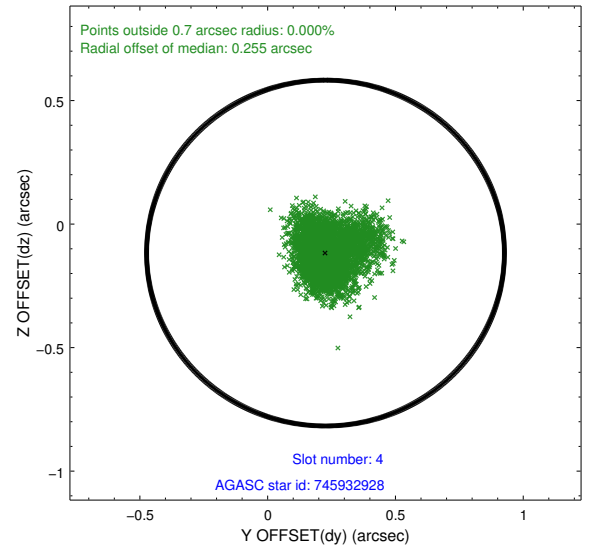
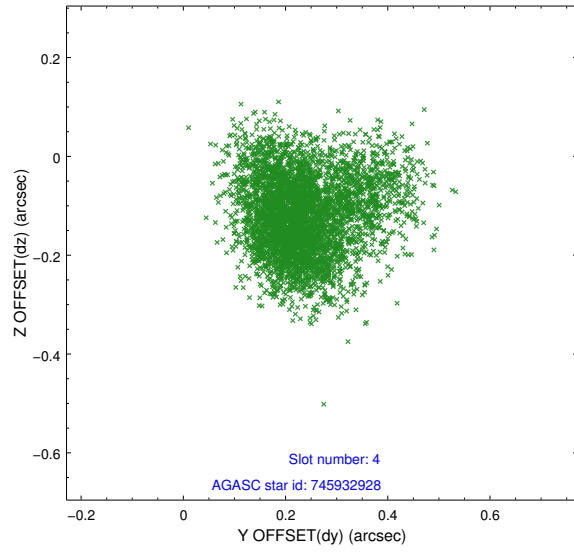
slot	status	id	mag	n_pts	med_dy	med_dz	dr1	dr2	ra	dec	mean_y	mean_z
0	FID	ACIS-S-2	6.92	2087	-0.077	-0.006	0.013	0.021	0.000000	0.000000	-767.85	-1737.41
1	FID	ACIS-S-4	7.01	2087	0.166	0.039	0.008	0.014	0.000000	0.000000	2145.38	170.45
2	FID	ACIS-S-5	7.04	2087	-0.120	-0.024	0.011	0.019	0.000000	0.000000	-1819.90	164.80
3	GUIDE	745932400	7.40	4174	0.022	-0.032	0.061	0.100	278.879477	-8.689912	-434.09	-1639.55
4	GUIDE	745932928	9.37	4168	0.226	-0.117	0.115	0.195	278.034432	-8.686351	-958.33	1321.20
5	GUIDE	745936608	9.22	4169	-0.276	-0.202	0.103	0.165	278.164164	-7.996010	1568.89	1313.24
6	GUIDE	745936792	8.65	4174	0.235	0.078	0.082	0.128	278.841392	-9.051493	-1738.61	-1736.90
7	GUIDE	745939984	9.59	4167	-0.217	0.275	0.139	0.220	279.137319	-8.258661	1255.92	-2268.21

2.4 Star Slots

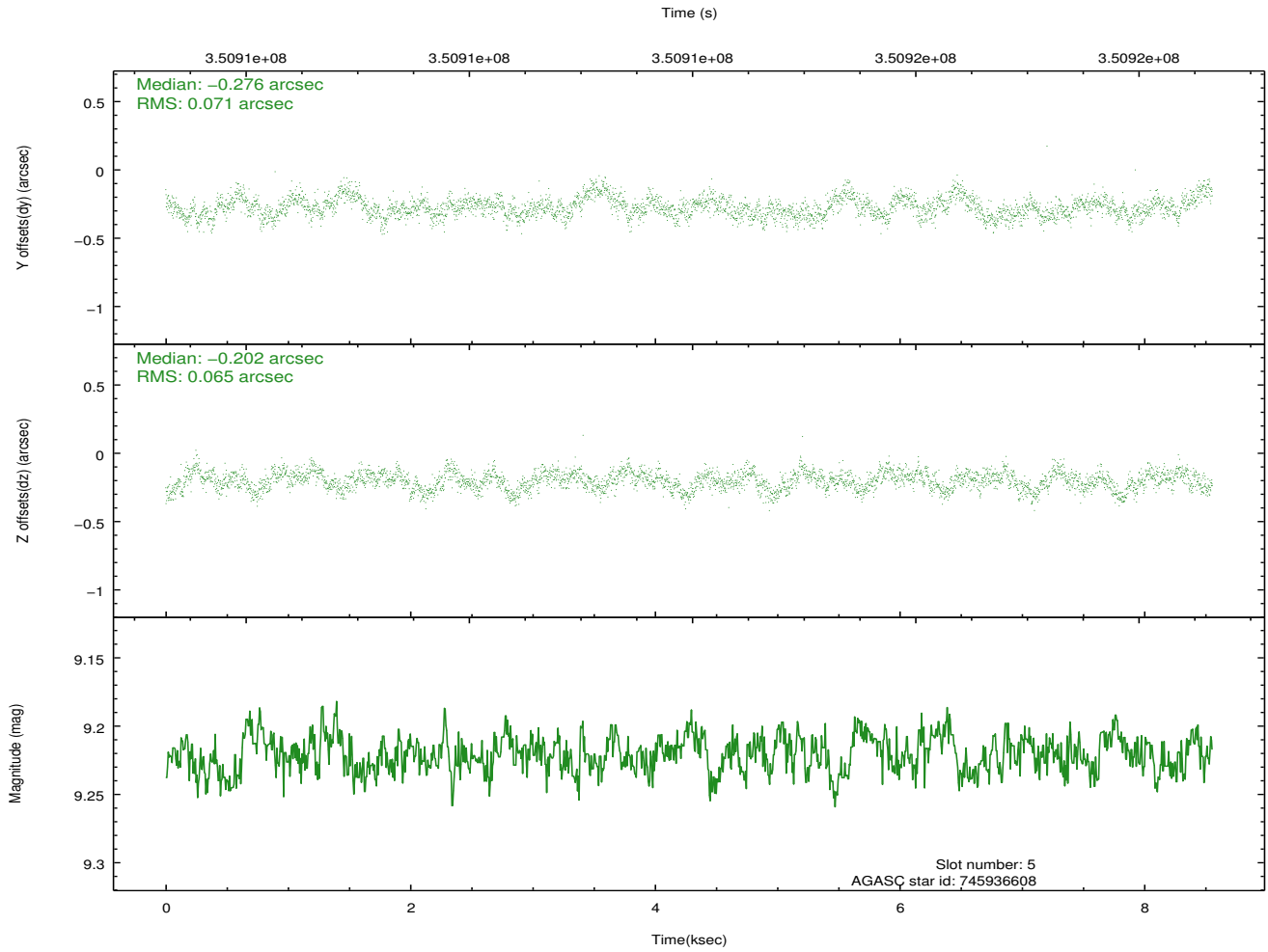
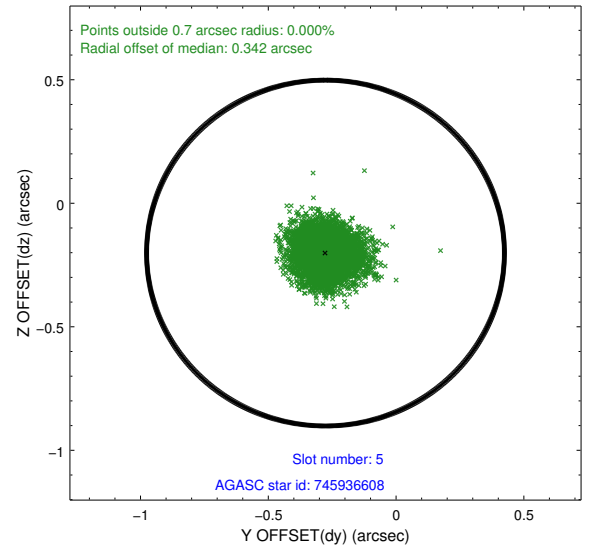
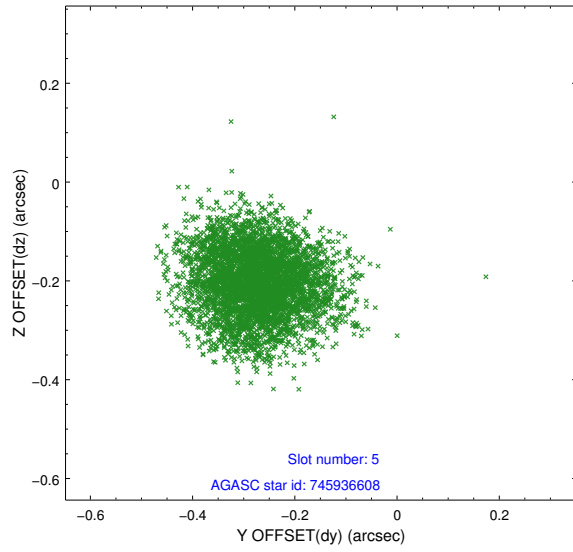
2.4.1 Slot 3



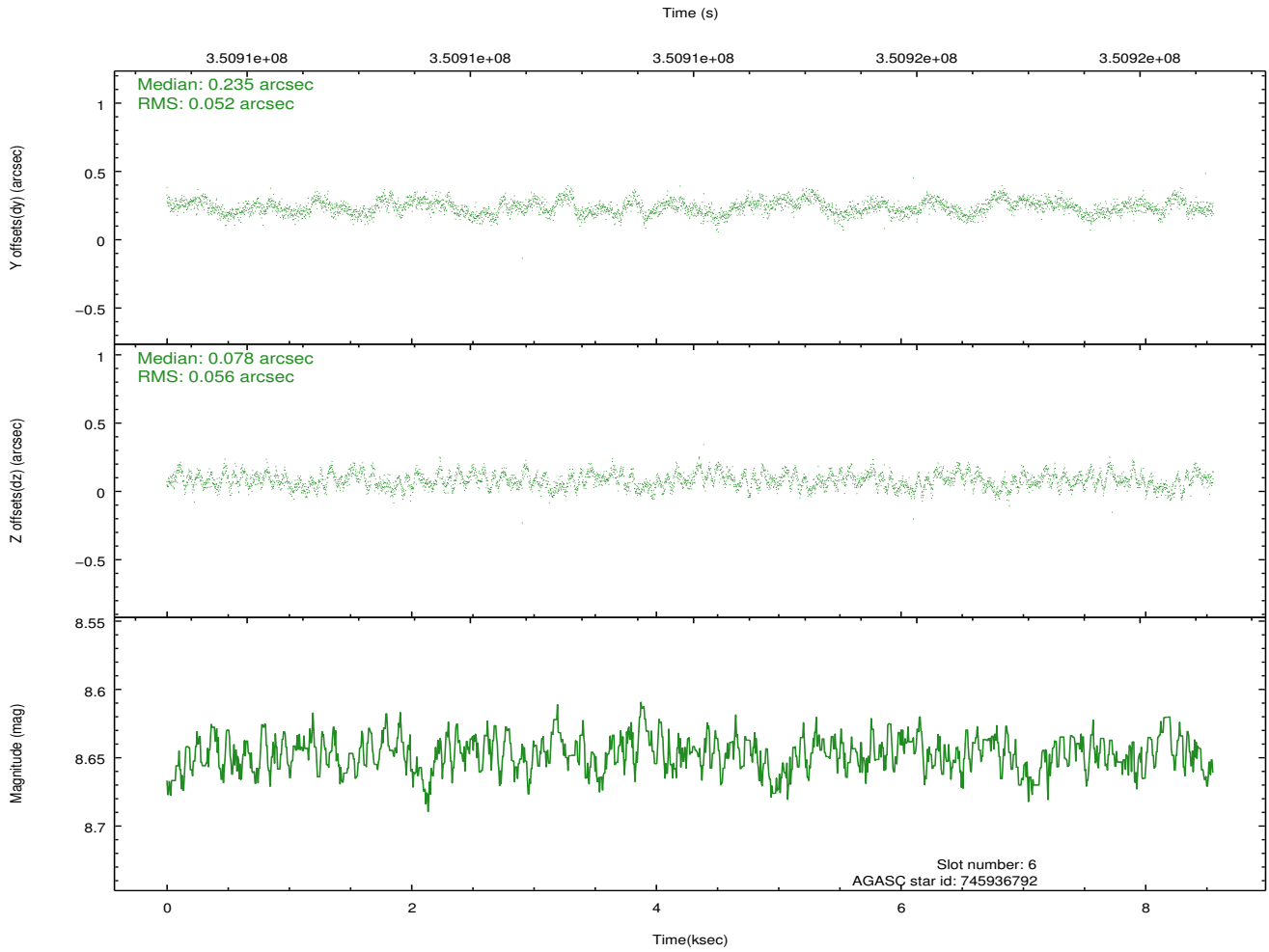
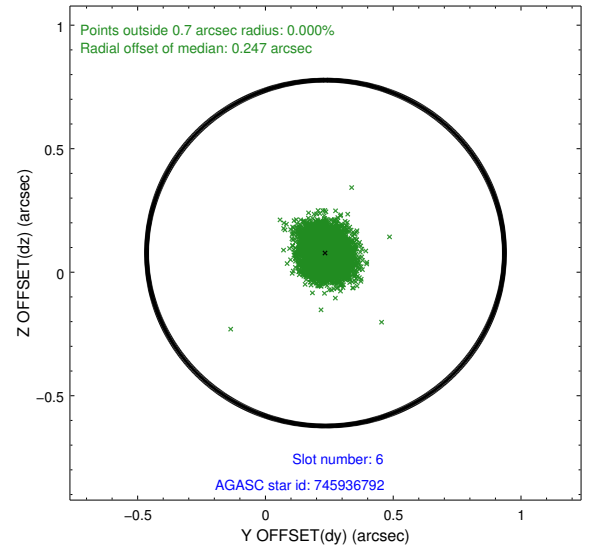
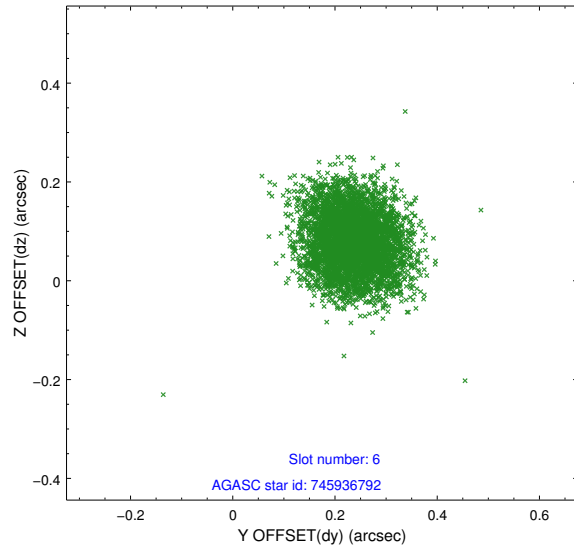
2.4.2 Slot 4



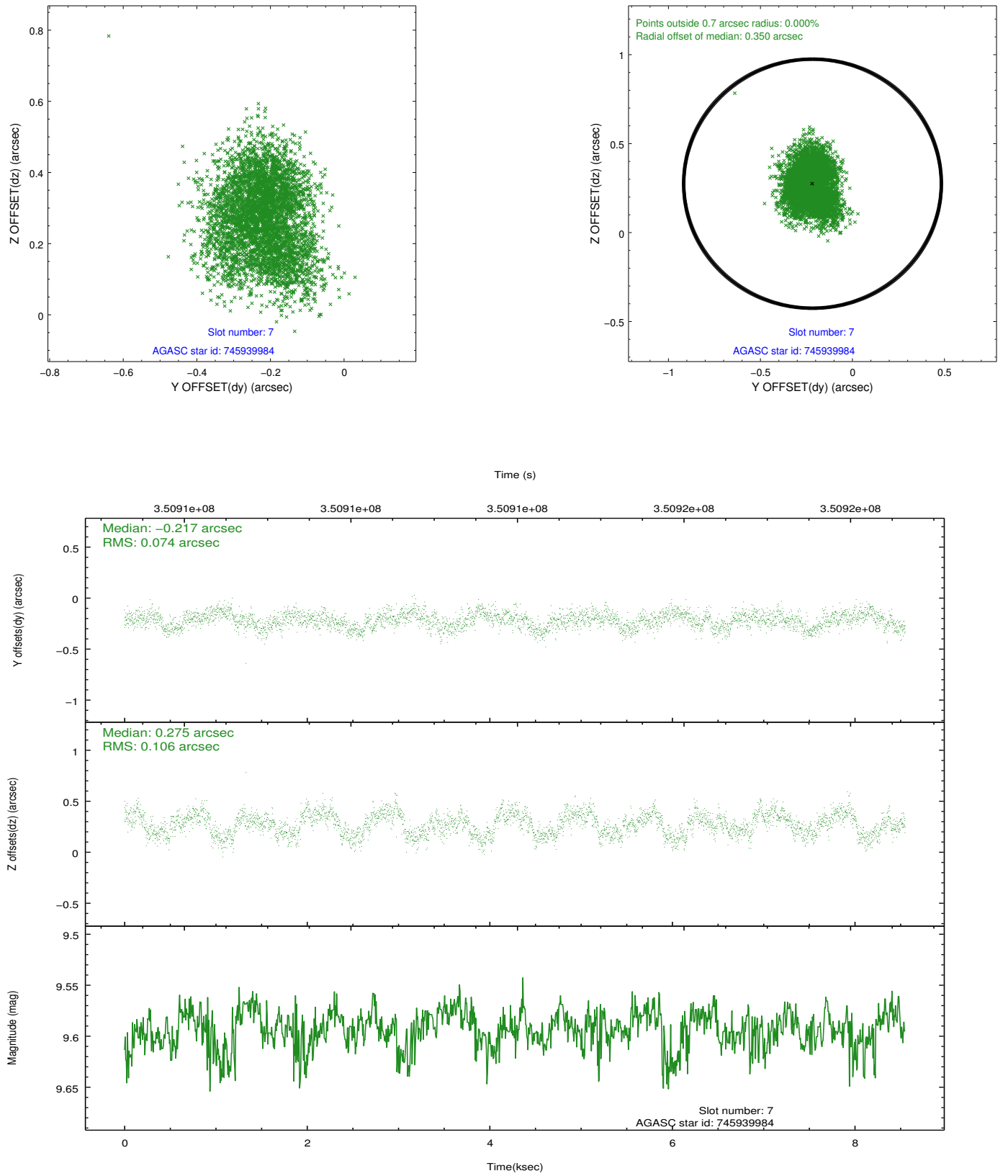
2.4.3 Slot 5



2.4.4 Slot 6

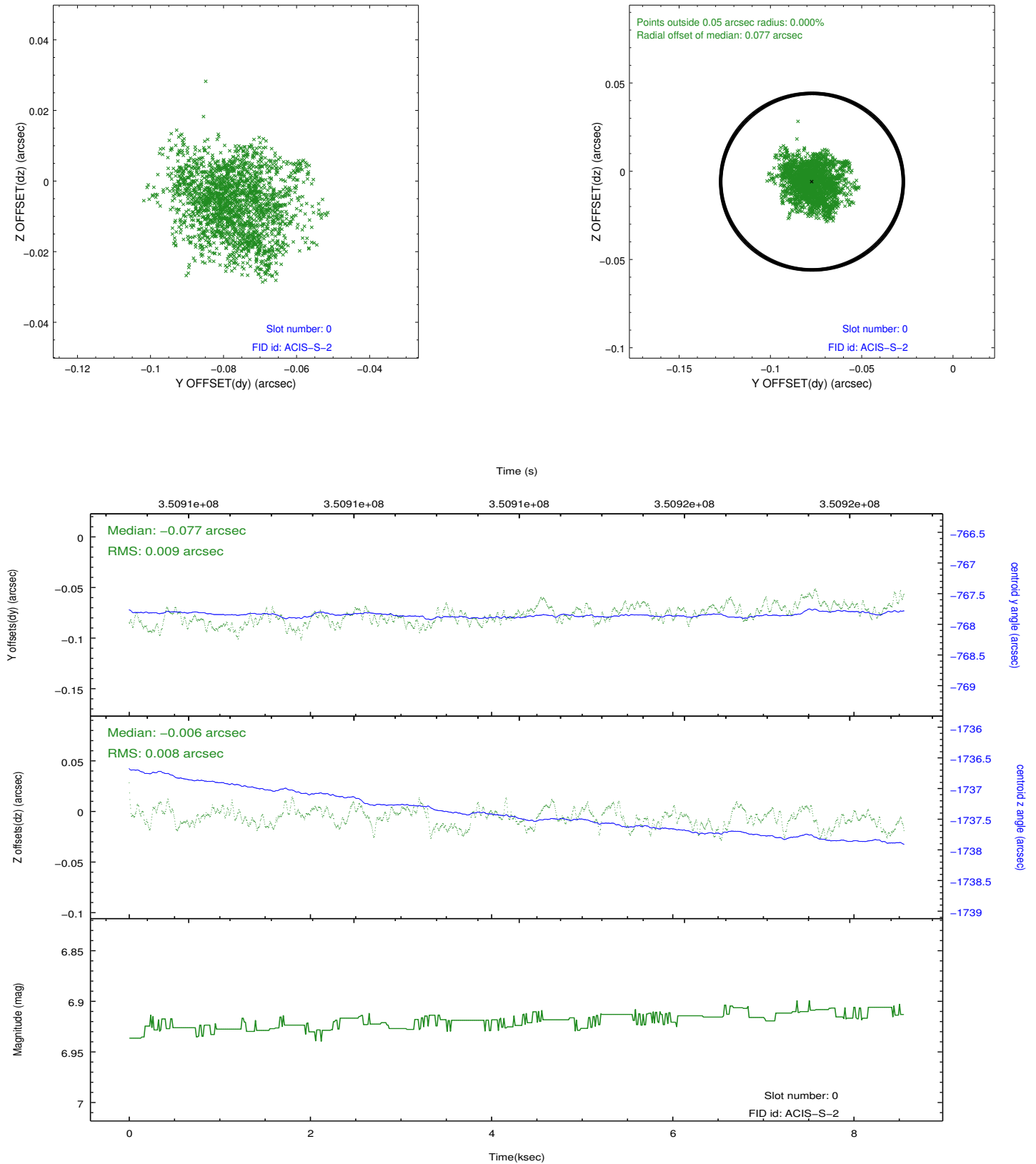


2.4.5 Slot 7

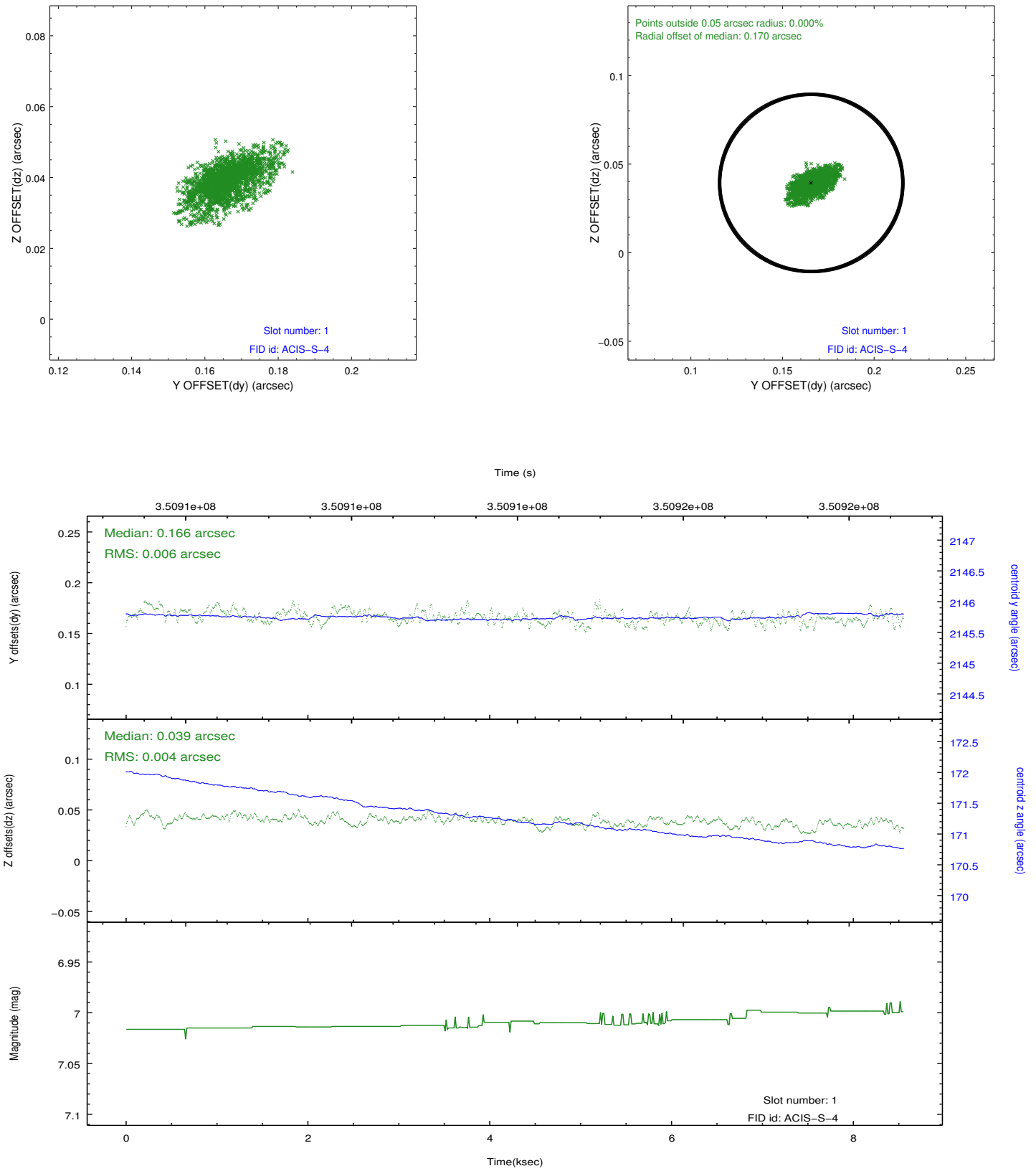


2.5 FID Slots

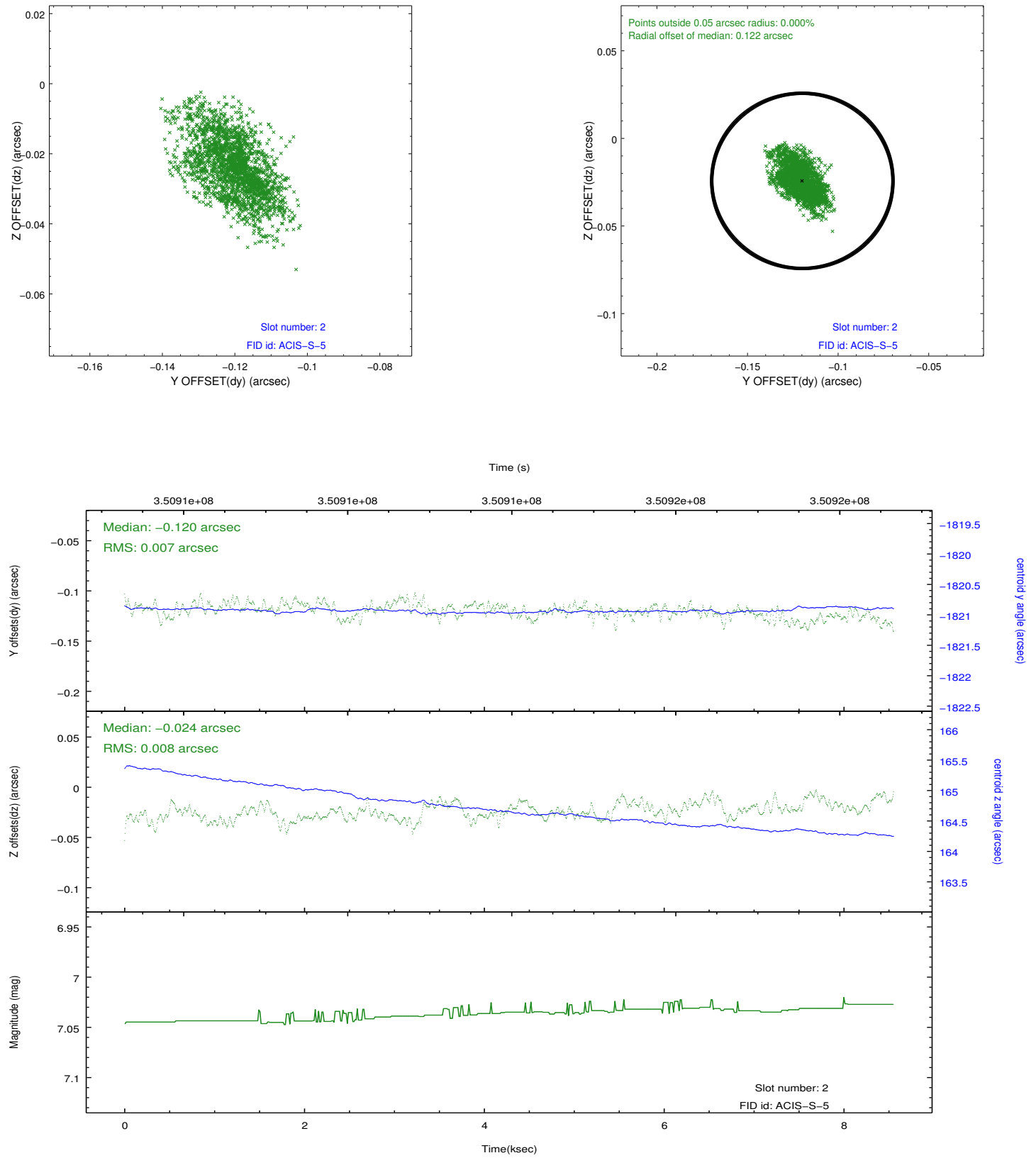
2.5.1 Slot 0



2.5.2 Slot 1



2.5.3 Slot 2



A Summary

A.1 Status

V&V Scientist	Joy Nichols
V&V Date (YYYY-MM-DD)	2012.06.05
V&V Edition	1
V&V Disposition and Status	OK
V&V Charge Time	8.1279999697208

A.2 Comments