

V&V Reference Report

L2 ASCDS Version : 8.4.4

Observation 10509 - L2 Version 2
Chandra X-Ray Center

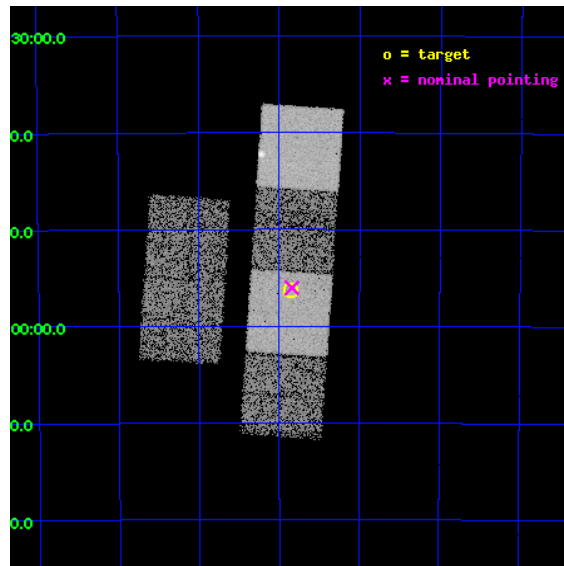
L2 Processing Date : May 30 2012

Contents

1	Front	2
2	OBI	3
2.1	OBI	3
2.1.1	Images	3
2.1.2	Bias	3
2.1.3	Parameters	4
2.1.4	Events	4
2.2	Compared Parameters	5
2.3	Aspect	6
2.4	Star Slots	9
2.4.1	Slot 3	9
2.4.2	Slot 4	10
2.4.3	Slot 5	11
2.4.4	Slot 6	12
2.4.5	Slot 7	13
2.5	FID Slots	14
2.5.1	Slot 0	14
2.5.2	Slot 1	15
2.5.3	Slot 2	16
A	Summary	17
A.1	Status	17
A.2	Comments	17

1 Front

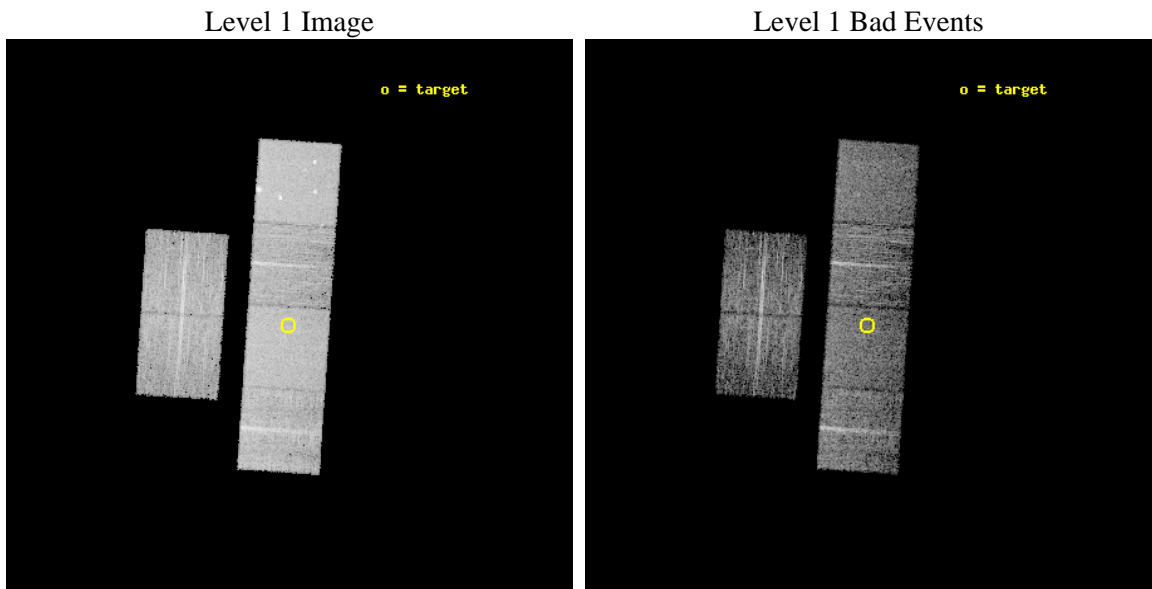
seq_num	900877	Sequence number
obs_id	10509	Observation id
title	ChIcAGO: Chandra Identification of ASCA Galactic Objects	Proposal
observer	Prof. Bryan Gaensler	Principal investigator
object	AX J153751-5556	Source name
dtcycle	0	
cycle	P	events from which exps? Prim/Second/Both
ra_targ	234.465833	Observer's specified target RA [deg]
dec_targ	-55.938	Observer's specified target Dec [deg]
ra_nom	234.46067019074	Nominal RA [deg]
dec_nom	-55.934074853464	Nominal Dec [deg]
roll_nom	93.836231351417	Nominal Roll [deg]
revision	2	Processing version of data
ontime	4550.0664407611	Sum of GTIs [s]
livetime	4492.4507597671	Livetime [s]
ontime2	4550.1074807644	Sum of GTIs [s]
ontime3	4549.9433207512	Sum of GTIs [s]
ontime5	4550.0254007578	Sum of GTIs [s]
ontime6	4549.9843607545	Sum of GTIs [s]
ontime7	4550.0664407611	Sum of GTIs [s]
ontime8	4546.6613104939	Sum of GTIs [s]
l2events	81232	Number of level 2 events



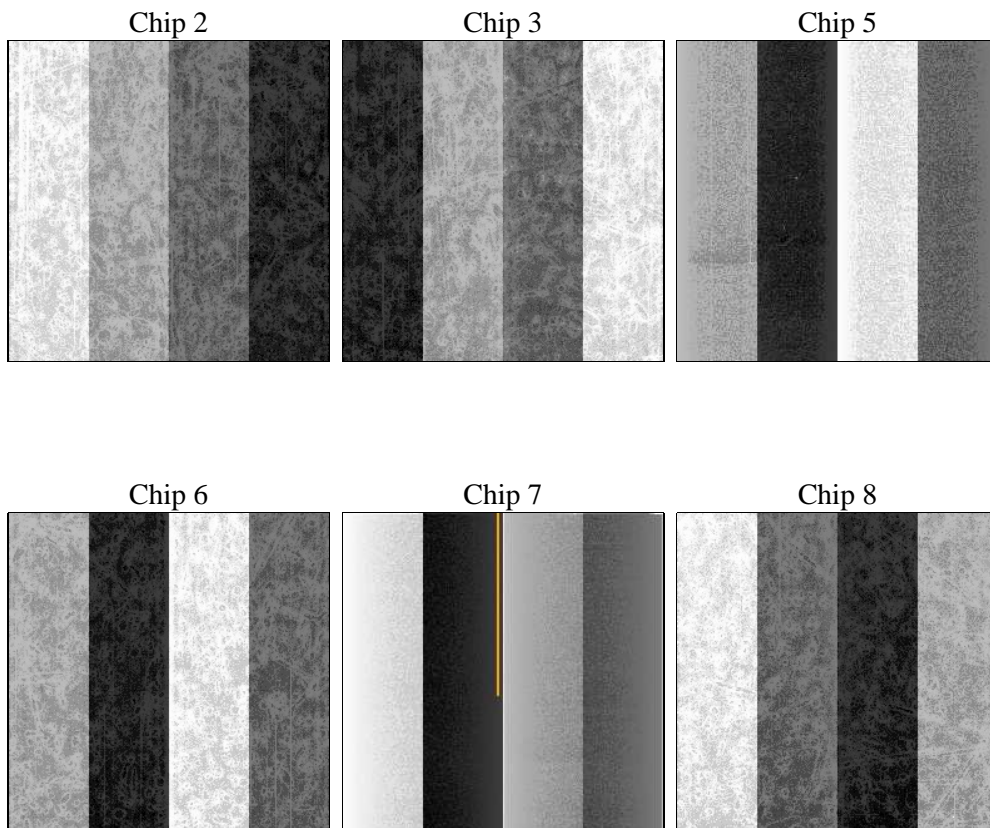
2 OBI

2.1 OBI

2.1.1 Images



2.1.2 Bias



2.1.3 Parameters

obi_num	0	Obi number	sched_exp_time	4600.000000	[s] Scheduled observation exposure time
ascdsver	8.4.4	Processing system revision	ontime	4550.0664407611	Sum of GTIs [s]
caldsver	4.4.9	 	ontime2	4550.1074807644	Sum of GTIs [s]
date	2012-05-30T05:30:15	Date and time of file creation	ontime3	4549.9433207512	Sum of GTIs [s]
revision	2	Processing version of data	ontime5	4550.0254007578	Sum of GTIs [s]
			ontime6	4549.9843607545	Sum of GTIs [s]
			ontime7	4550.0664407611	Sum of GTIs [s]
			ontime8	4546.6613104939	Sum of GTIs [s]
			l1events	337161	Number of level 1 events

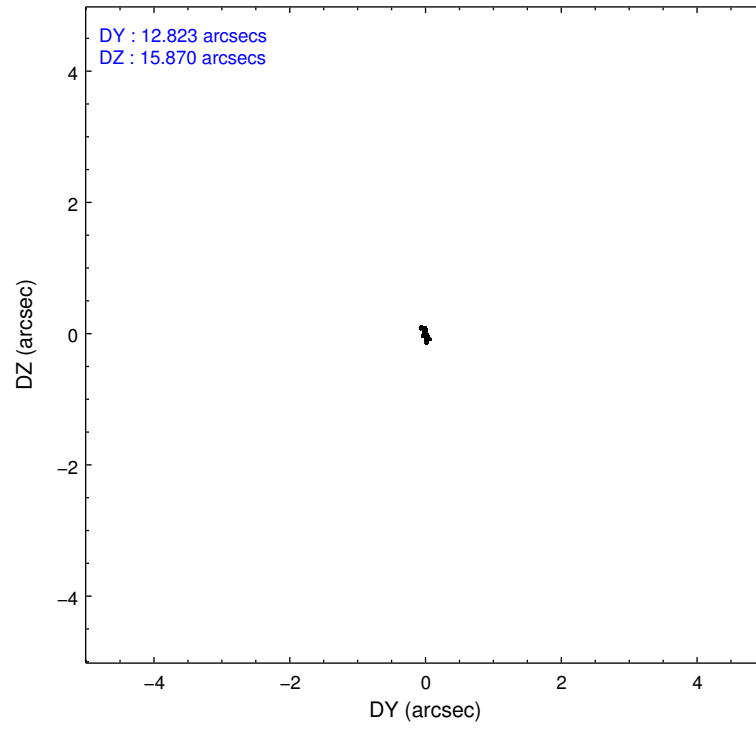
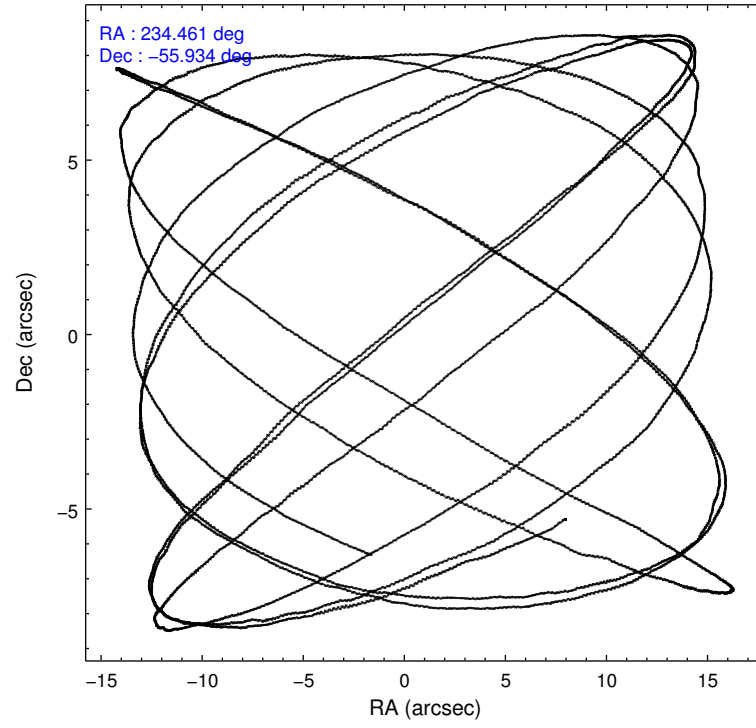
2.1.4 Events

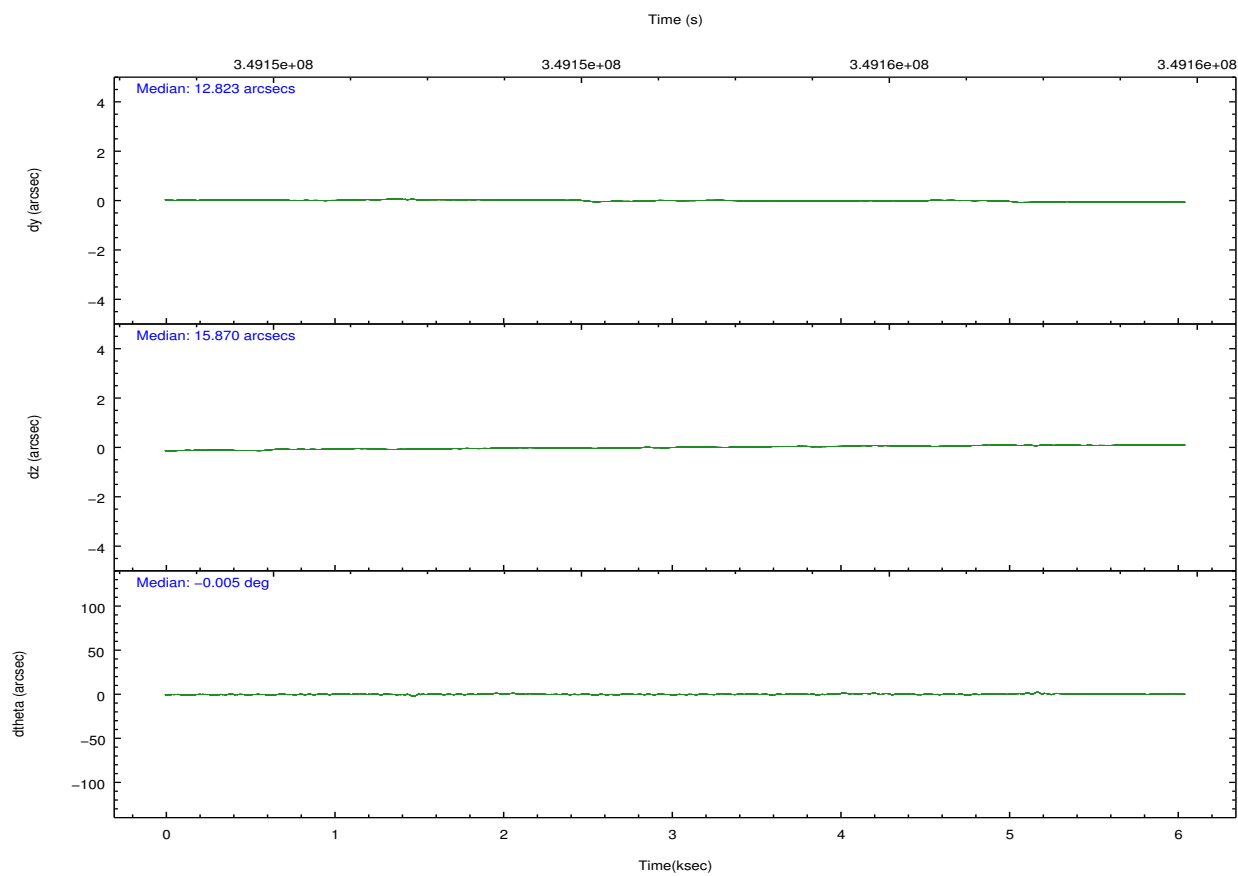
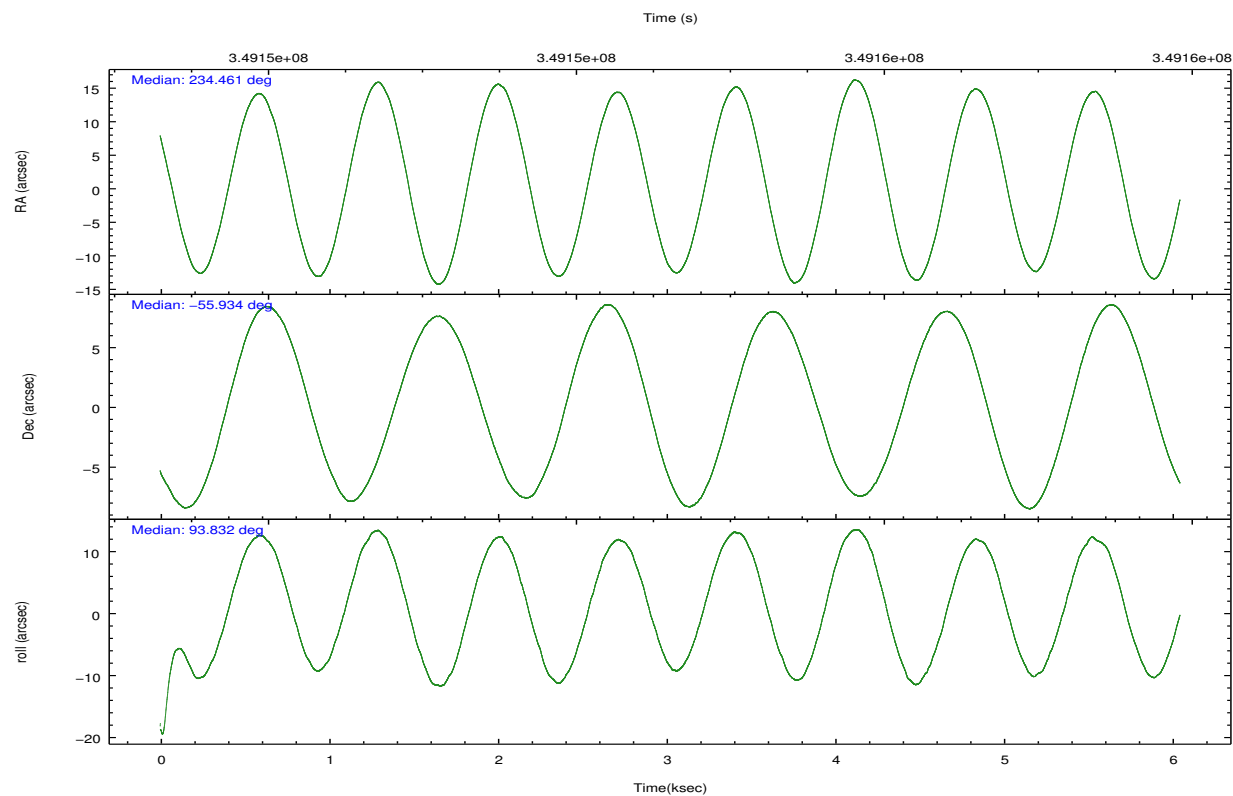
	ccd 2	ccd 3	ccd 5	ccd 6	ccd 7	ccd 8		ccd 2	ccd 3	ccd 5	ccd 6	ccd 7	ccd 8
level 1 events	47395	42726	75598	47588	65686	58168	grade 0 events	2604	2661	3645	2359	2283	4261
rejected events	41470	36932	39876	41560	38270	44651		5%	6%	4%	4%	3%	7%
rejected %	87%	86%	52%	87%	58%	76%	grade 1 events	29	35	163	26	64	47
								0%	0%	0%	0%	0%	0%
							grade 2 events	1274	1057	11023	1368	5809	3041
								2%	2%	14%	2%	8%	5%
							grade 3 events	521	517	1287	588	2318	1444
								1%	1%	1%	1%	3%	2%
							grade 4 events	524	558	1255	525	2296	1229
								1%	1%	1%	1%	3%	2%
							grade 5 events	1994	2127	5364	2204	6260	3042
								4%	4%	7%	4%	9%	5%
							grade 6 events	1004	1004	18535	1191	14735	3563
								2%	2%	24%	2%	22%	6%
							grade 7 events	39445	34767	34326	39327	31921	41541
								83%	81%	45%	82%	48%	71%

2.2 Compared Parameters

Parameter	Planned	Actual	Parameter	Planned	Actual
Instrument	ACIS	ACIS	Obspar format version number	7	7
Detector	ACIS-235678	ACIS-235678	Obspar file type	PREDICTED	ACTUAL
Grating	NONE	NONE	Obspar update status	NONE	UPDATED
Data mode	FAINT	FAINT	CCD I0 on	N	N
Observation mode	POINTING	POINTING	CCD I1 on	N	N
[deg] Pointing RA	234.488567	234.4606701907446	CCD I2 on	O2	Y
[deg] Pointing Dec	-55.956550	-55.9340748534642	CCD I3 on	O3	Y
[deg] Pointing Roll	93.702725	93.83623135141664	CCD S0 on	N	N
[mm] SIM focus pos	-0.684267	-0.6828225247311905	CCD S1 on	O1	Y
[mm] SIM defocus	0	0.001444936568705701	CCD S2 on	O5	Y
[mm] SIM translation stage pos	-190.132523	-190.1400660498719	CCD S3 on	Y	Y
[mm] SIM translation stage offset	0	0.00754346686406393	CCD S4 on	O4	Y
[s] Observation start time (MET)	349153025.184000	349151329.63392	CCD S5 on	N	N
Observation start date	2009-01-24T02:55:59	2009-01-24T02:28:49	Number of optional ACIS chips dropped	0	0
[s] Observation end time (MET)	349157625.184000	349158579.97178	On-chip summing requested	N	N
Observation end date	2009-01-24T04:12:39	2009-01-24T04:29:39	Subarray requested	NONE	NONE
Read mode	TIMED	TIMED	Alternating exposures requested	N	N
			[s] Primary exposure time	0.000000	3.2

2.3 Aspect



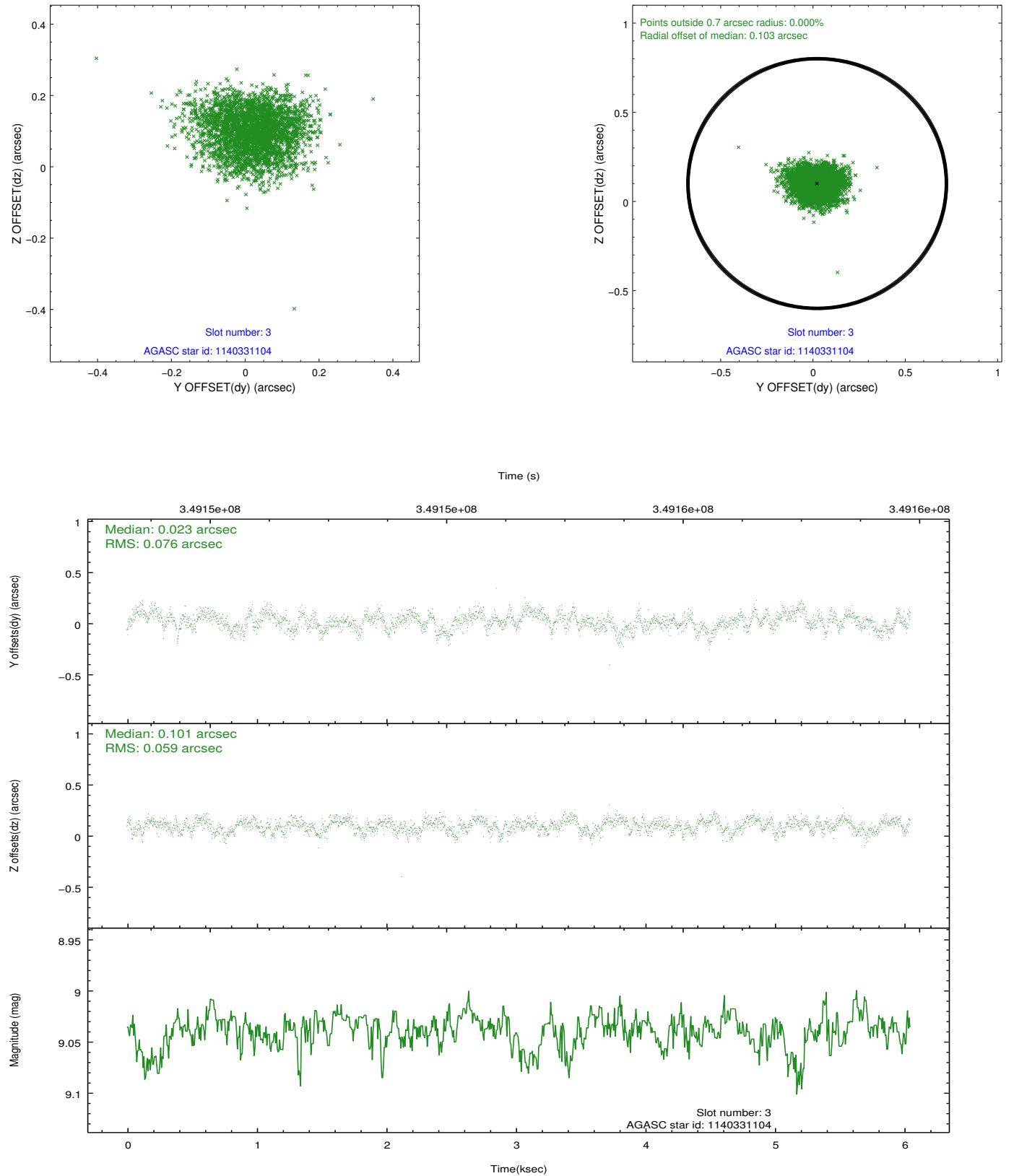


Slot Statistics

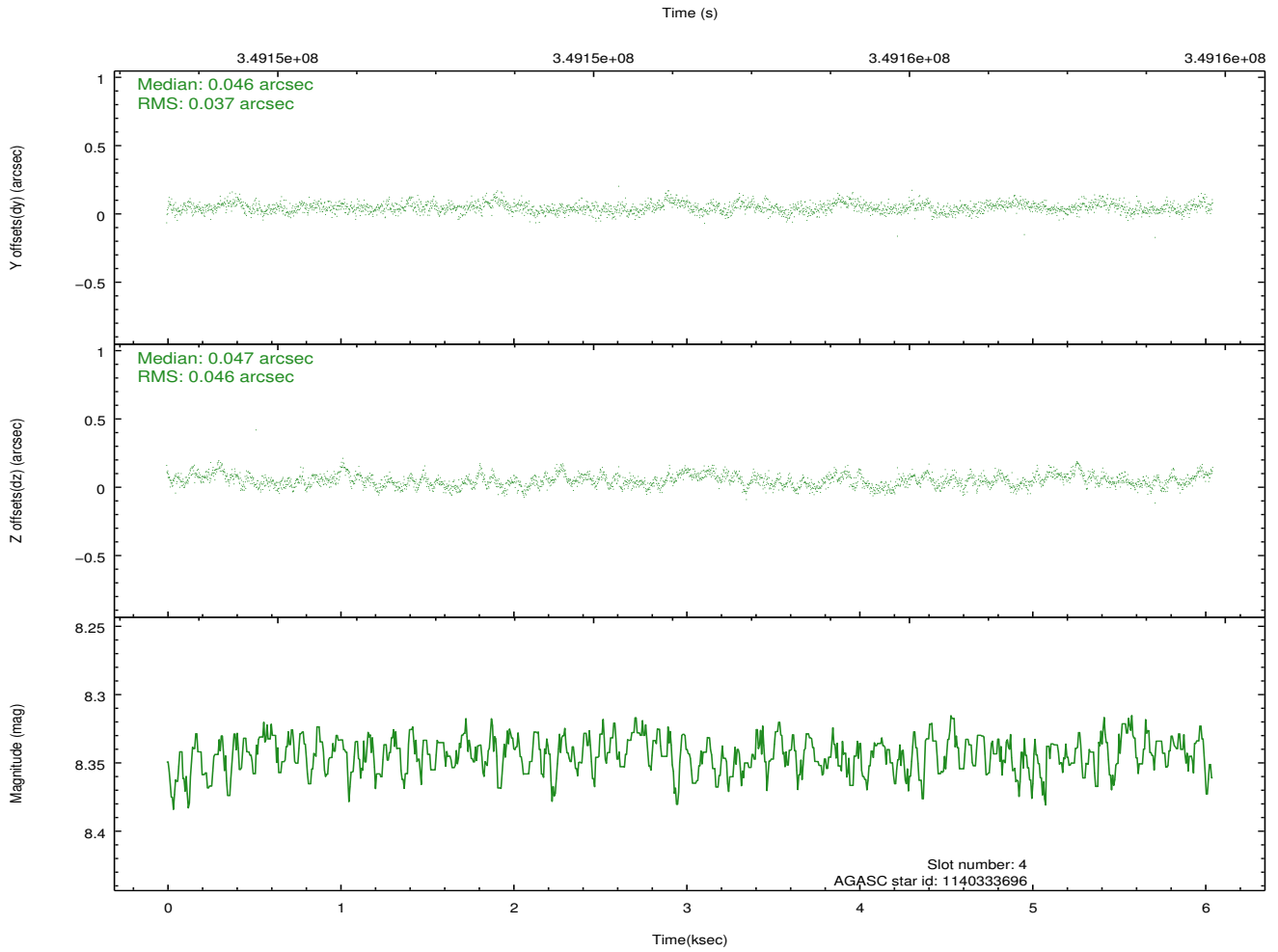
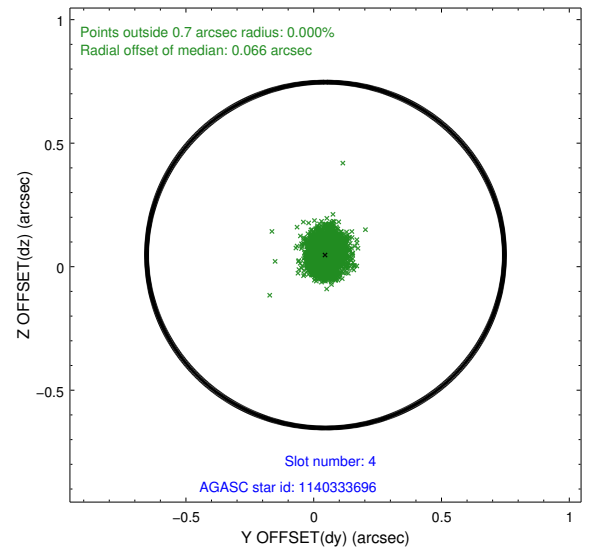
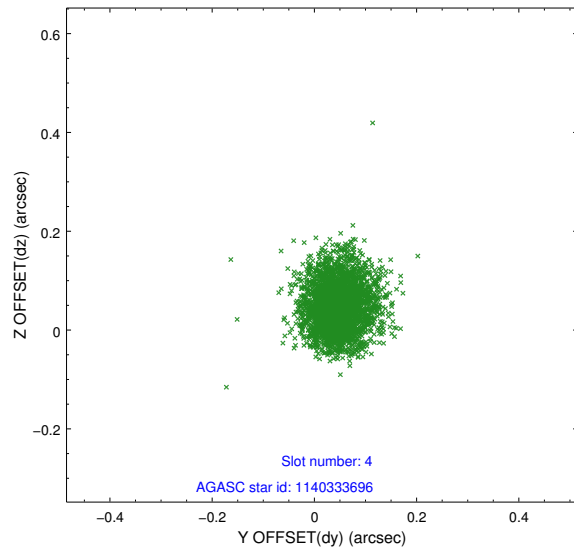
slot	status	id	mag	n_pts	med_dy	med_dz	dr1	dr2	ra	dec	mean_y	mean_z
0	FID	ACIS-S-2	6.88	1475	-0.048	-0.025	0.009	0.017	0.000000	0.000000	-765.75	-1737.31
1	FID	ACIS-S-4	6.97	1475	0.172	0.030	0.008	0.016	0.000000	0.000000	2147.27	170.25
2	FID	ACIS-S-5	7.00	1475	-0.155	0.004	0.007	0.013	0.000000	0.000000	-1817.47	164.96
3	GUIDE	1140331104	9.04	2949	0.023	0.101	0.103	0.165	234.811545	-55.360036	2099.13	-797.98
4	GUIDE	1140333696	8.34	2951	0.046	0.047	0.062	0.102	234.616228	-55.826377	451.71	-288.05
5	GUIDE	1140860848	9.26	2947	-0.010	-0.217	0.102	0.160	233.526865	-56.292447	-1095.58	1996.05
6	GUIDE	1140861136	7.47	2951	0.068	0.305	0.063	0.099	235.565647	-56.540017	-2250.74	-1995.99
7	GUIDE	1140203248	9.41	2948	-0.126	-0.233	0.115	0.182	233.304375	-55.679490	1129.31	2334.53

2.4 Star Slots

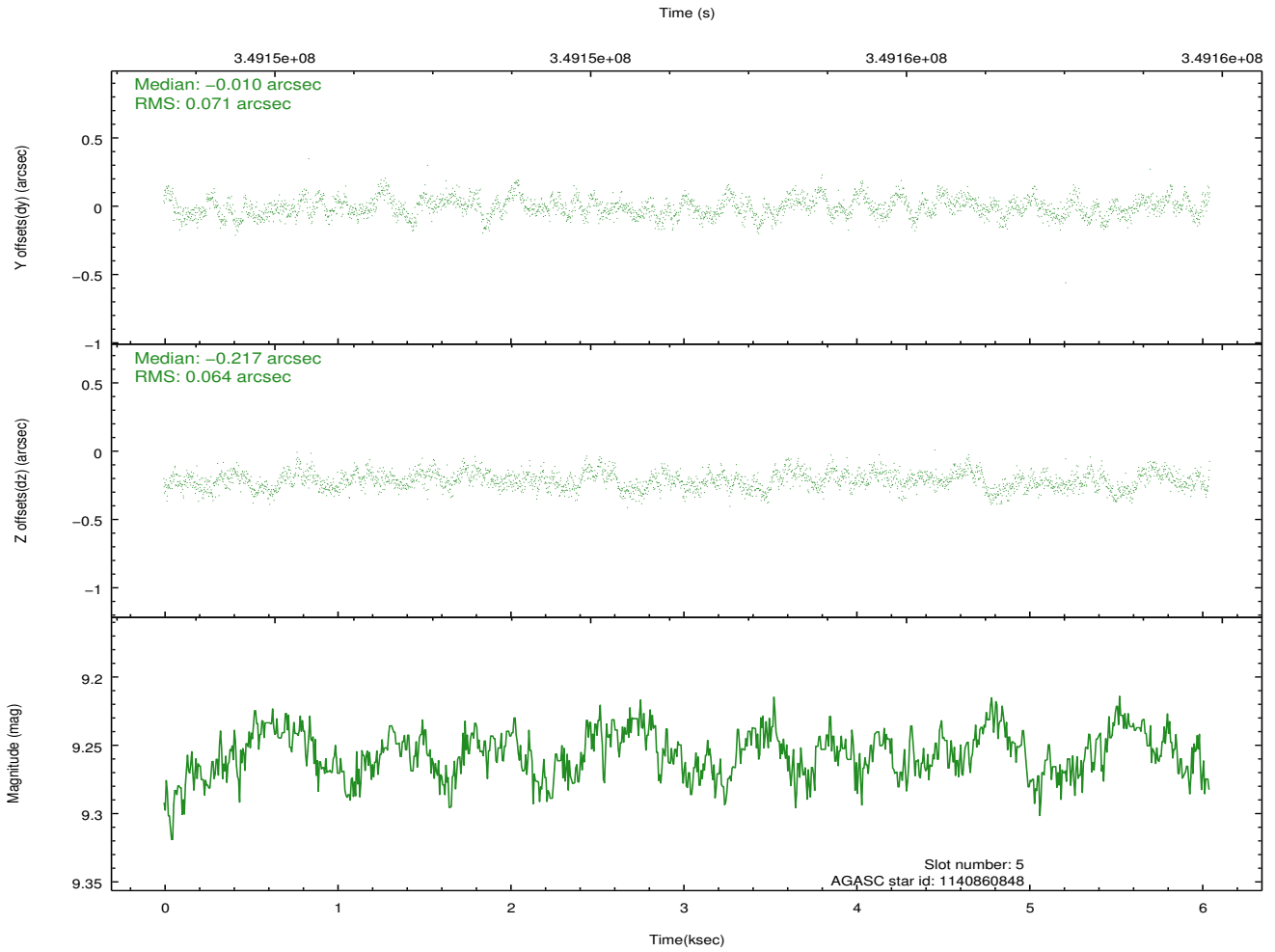
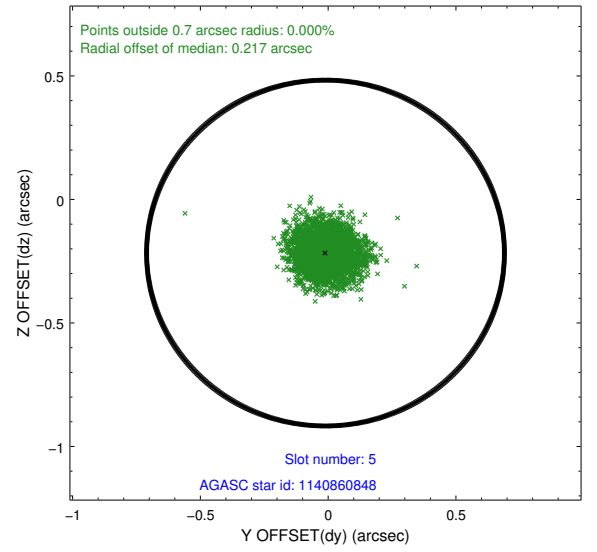
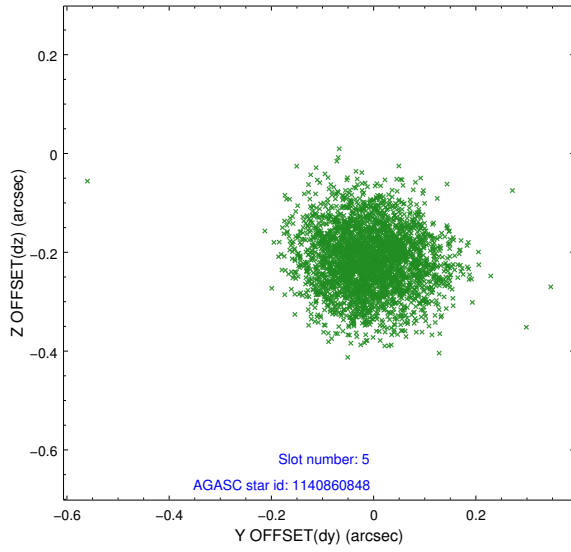
2.4.1 Slot 3



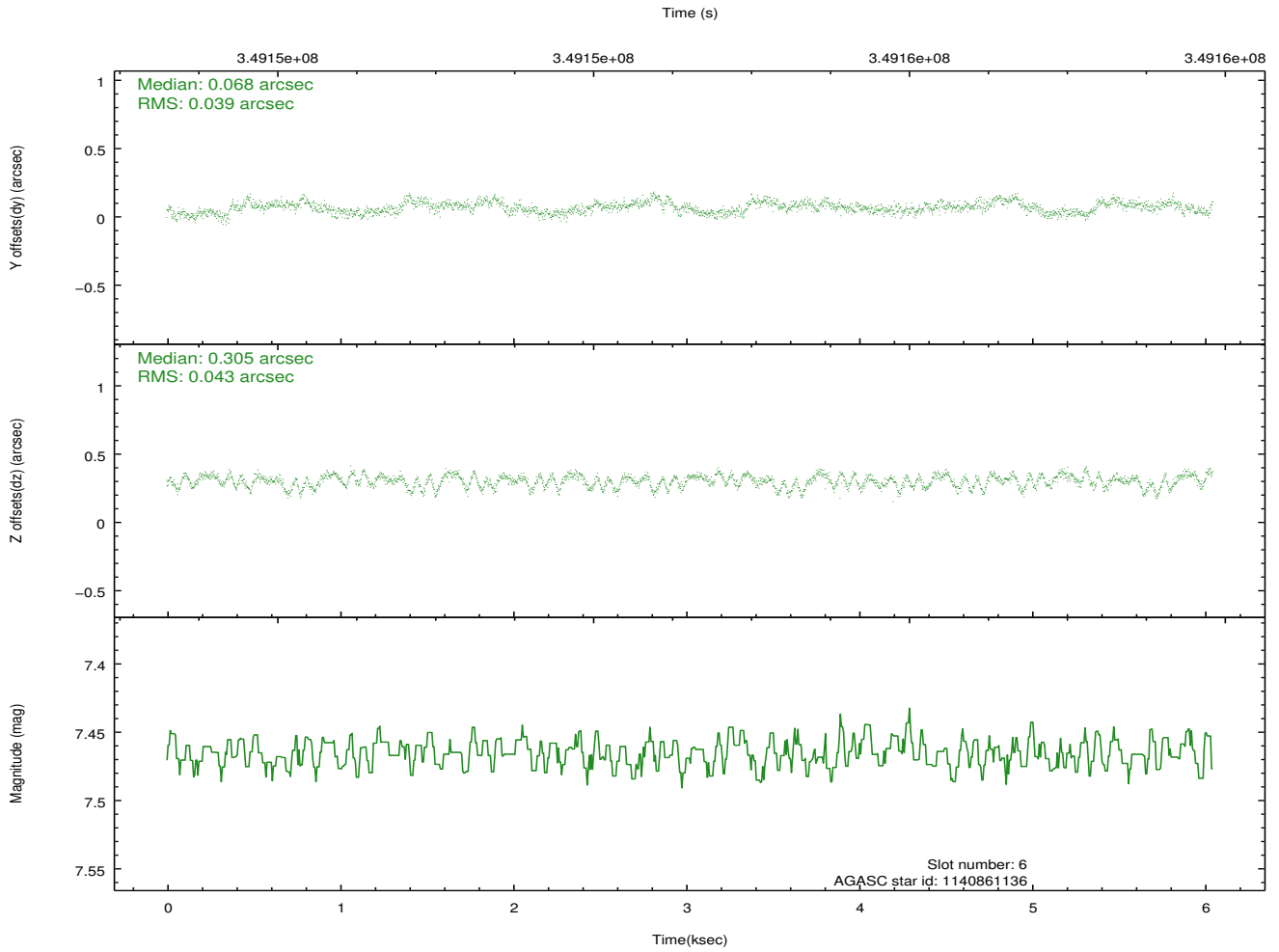
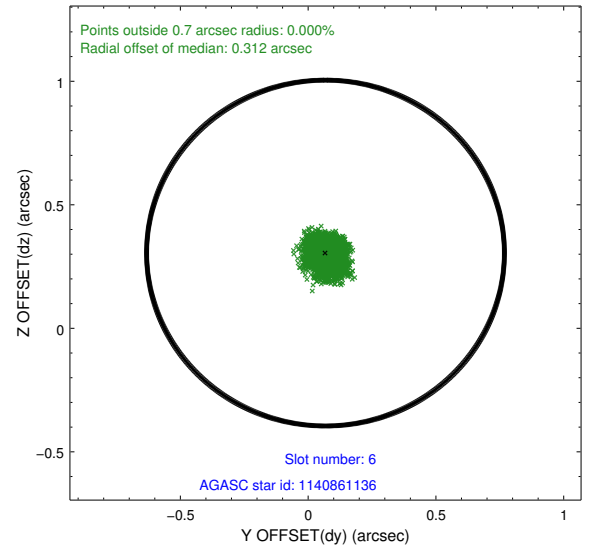
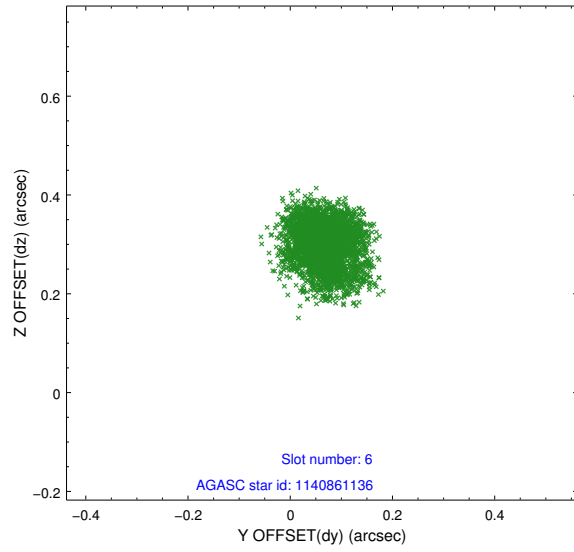
2.4.2 Slot 4



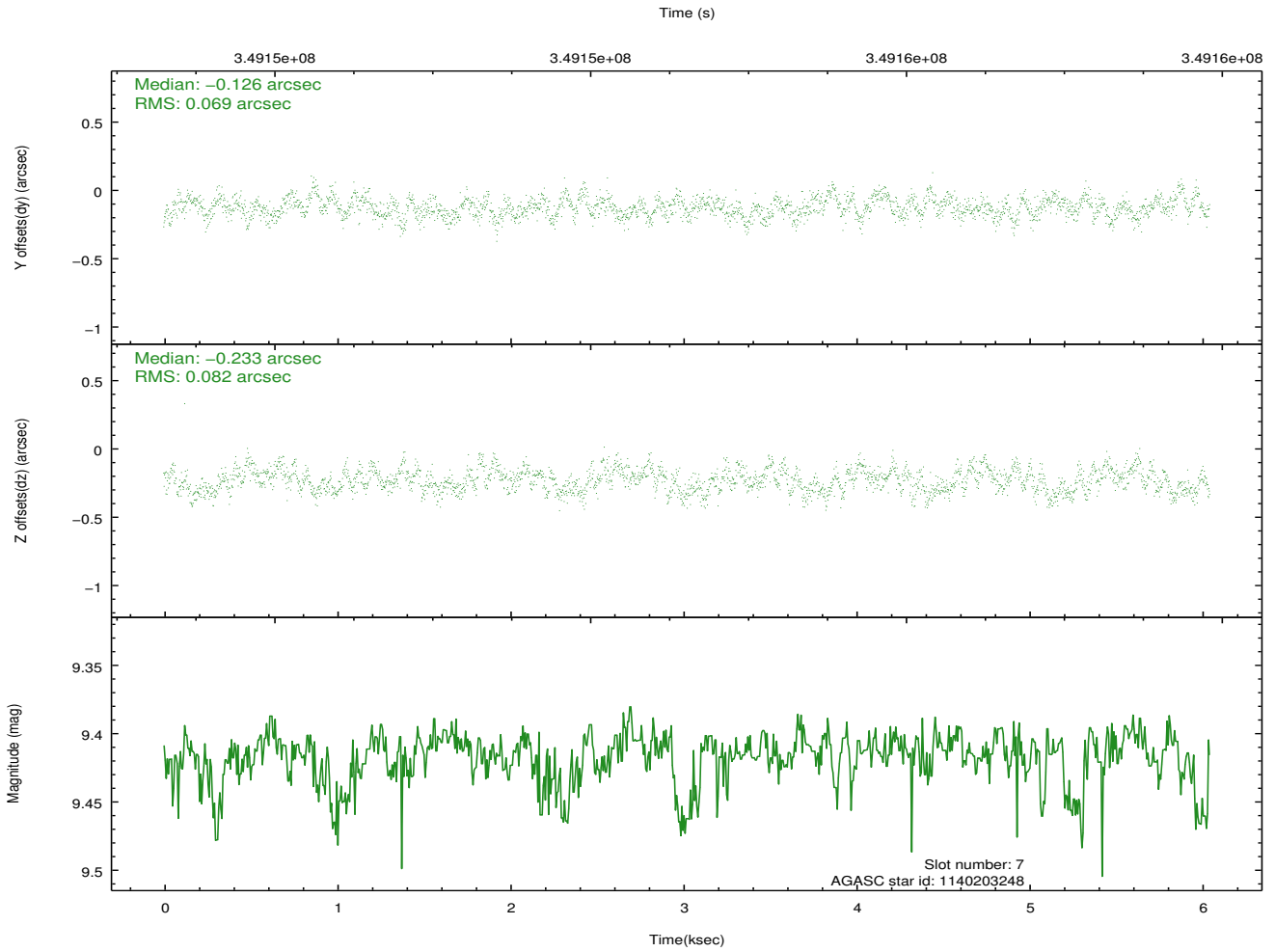
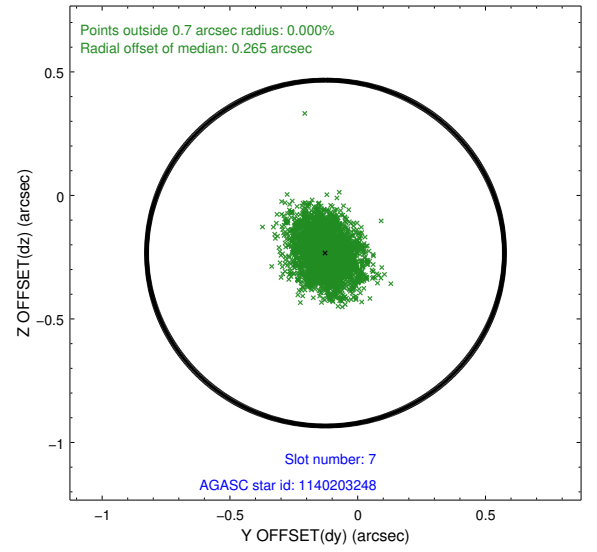
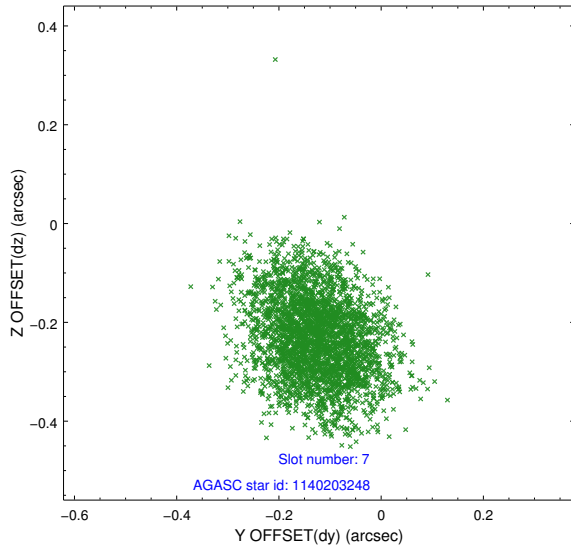
2.4.3 Slot 5



2.4.4 Slot 6

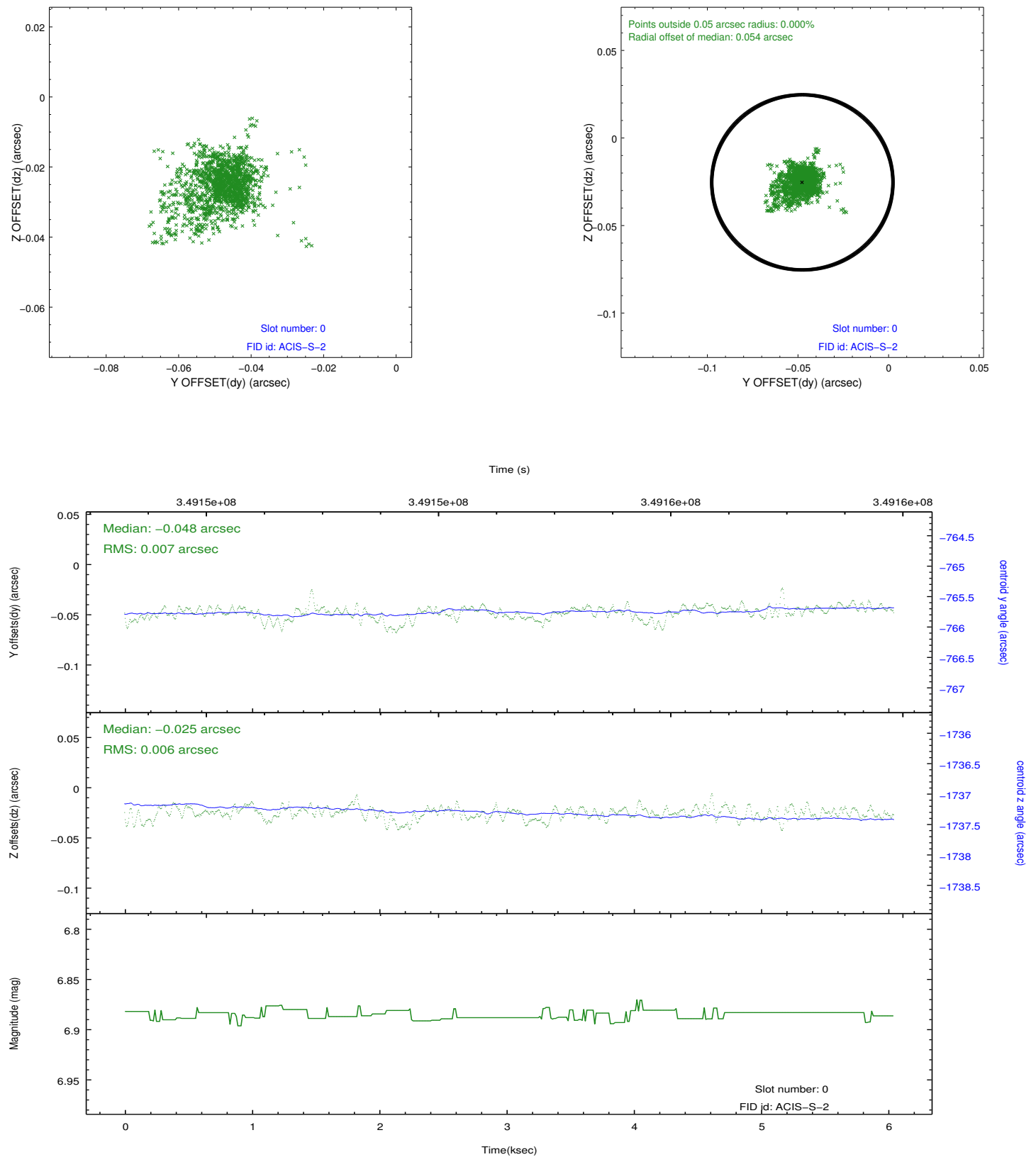


2.4.5 Slot 7

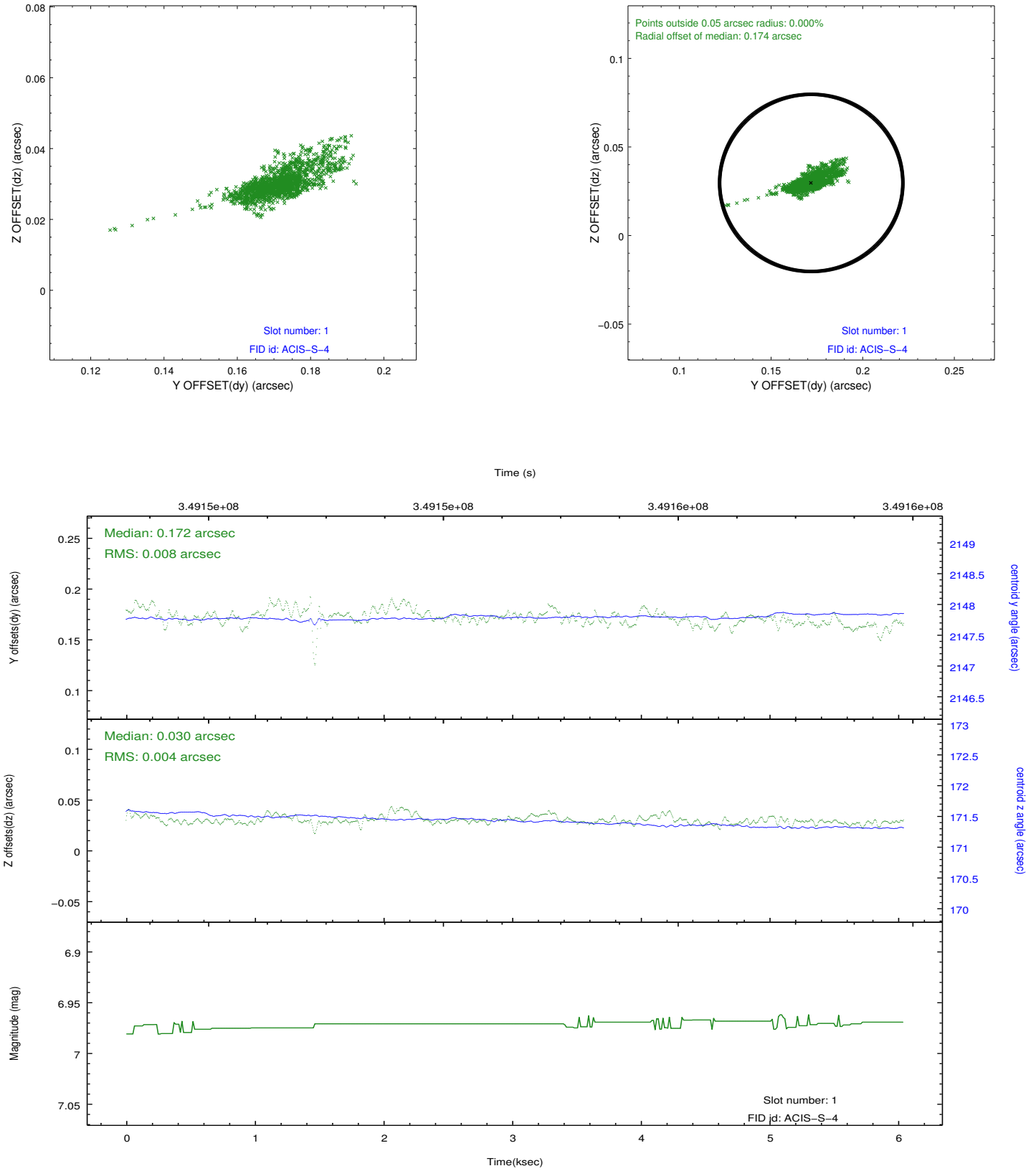


2.5 FID Slots

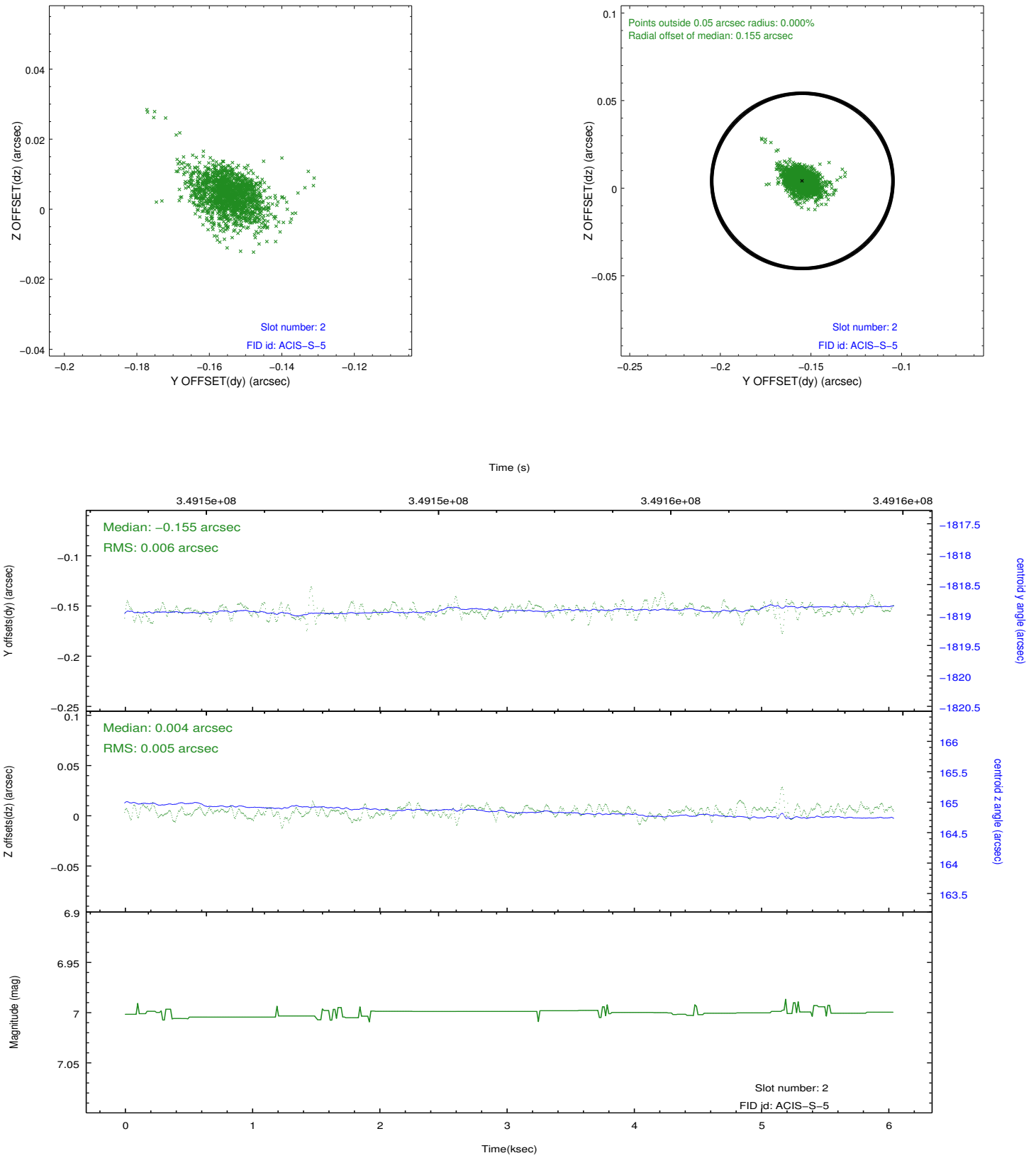
2.5.1 Slot 0



2.5.2 Slot 1



2.5.3 Slot 2



A Summary

A.1 Status

V&V Scientist	Jen Lauer
V&V Date (YYYY-MM-DD)	2012.06.04
V&V Edition	1
V&V Disposition and Status	OK
V&V Charge Time	4.55039998

A.2 Comments