

V&V Reference Report

L2 ASCDS Version : 8.4.4

Observation 10746 - L2 Version 2
Chandra X-Ray Center

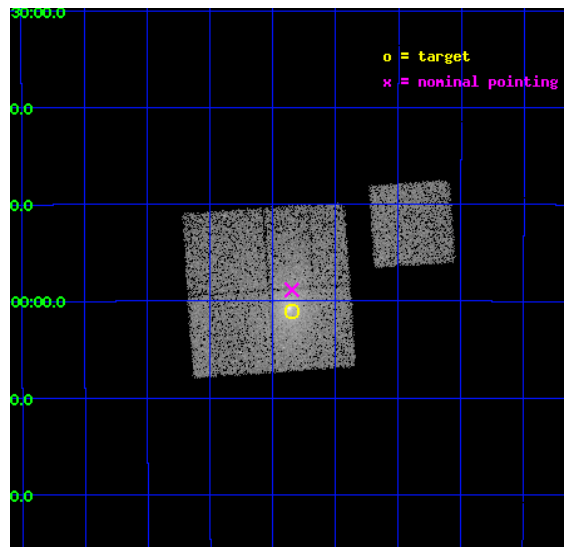
L2 Processing Date : May 24 2012

Contents

1	Front	2
2	OBI	3
2.1	OBI	3
2.1.1	Images	3
2.1.2	Bias	3
2.1.3	Parameters	4
2.1.4	Events	4
2.2	Compared Parameters	5
2.3	Aspect	6
2.4	Star Slots	9
2.4.1	Slot 3	9
2.4.2	Slot 4	10
2.4.3	Slot 5	11
2.4.4	Slot 6	12
2.4.5	Slot 7	13
2.5	FID Slots	14
2.5.1	Slot 0	14
2.5.2	Slot 1	15
2.5.3	Slot 2	16
A	Summary	17
A.1	Status	17
A.2	Comments	17

1 Front

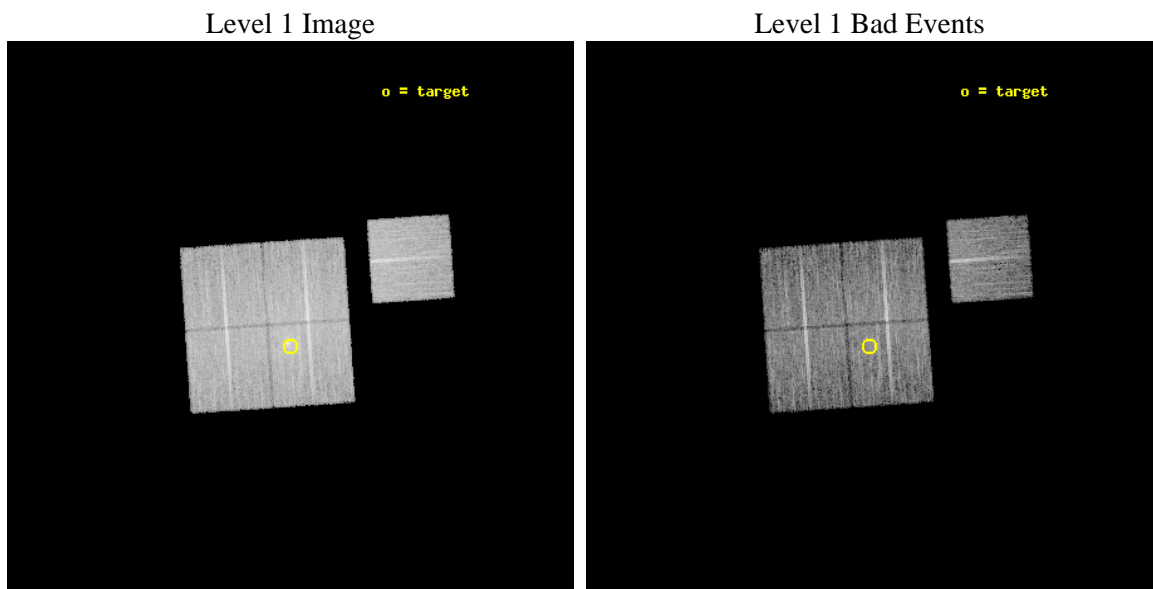
seq_num	800847	Sequence number
obs_id	10746	Observation id
title	Chandra observations of flux-limited sample of low-redshift galaxy clusters	Proposal title
observer	Dr. Stephen Murray	Principal investigator
object	A3528n	Source name
dtcycle	0	
cycle	P	events from which exps? Prim/Second/Both
ra_targ	193.586667	Observer's specified target RA [deg]
dec_targ	-29.018667	Observer's specified target Dec [deg]
ra_nom	193.58692742476	Nominal RA [deg]
dec_nom	-28.980857812707	Nominal Dec [deg]
roll_nom	86.121681843081	Nominal Roll [deg]
revision	2	Processing version of data
ontime	10130.800077915	Sum of GTIs [s]
livetime	9998.4337167107	Livetime [s]
ontime0	10130.800077915	Sum of GTIs [s]
ontime1	10124.518097401	Sum of GTIs [s]
ontime2	10130.800077915	Sum of GTIs [s]
ontime3	10130.800077915	Sum of GTIs [s]
ontime6	10130.800077915	Sum of GTIs [s]
l2events	51793	Number of level 2 events



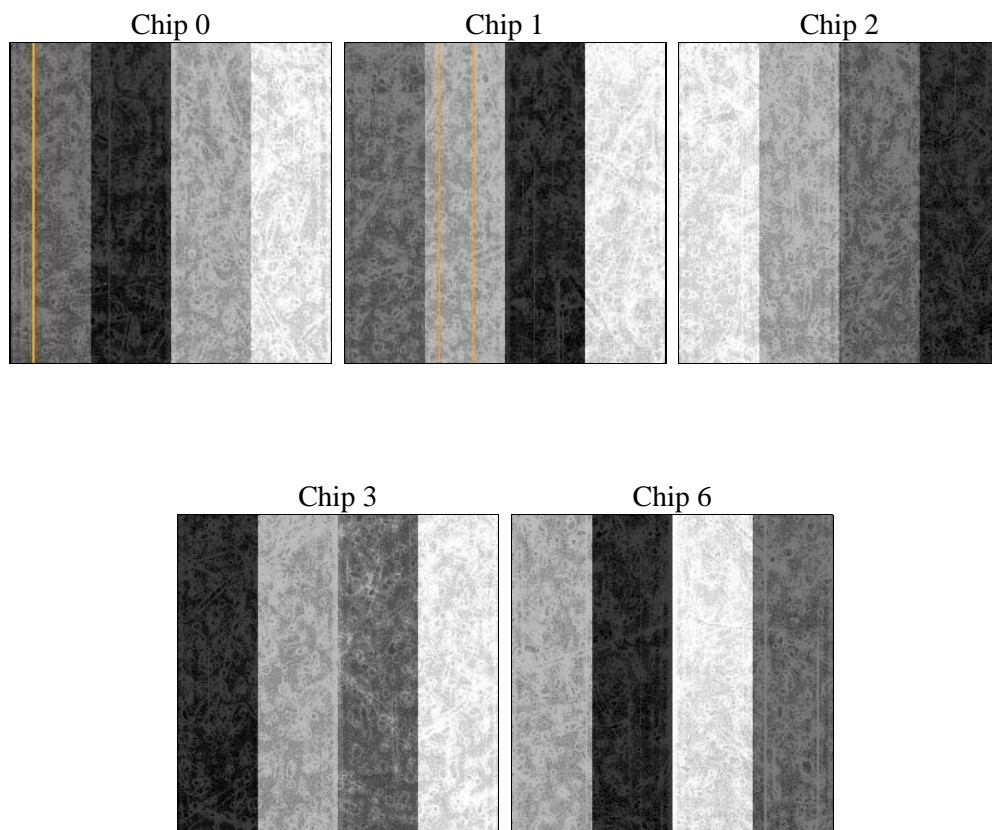
2 OBI

2.1 OBI

2.1.1 Images



2.1.2 Bias



2.1.3 Parameters

obi_num	0	Obi number	sched_exp_time	10000.000000	[s] Scheduled observation exposure time
ascdsver	8.4.4	Processing system revision	ontime	10130.800077915	Sum of GTIs [s]
caldsver	4.4.9	 	ontime0	10130.800077915	Sum of GTIs [s]
date	2012-05-24T16:59:54	Date and time of file creation	ontime1	10124.518097401	Sum of GTIs [s]
revision	2	Processing version of data	ontime2	10130.800077915	Sum of GTIs [s]
			ontime3	10130.800077915	Sum of GTIs [s]
			ontime6	10130.800077915	Sum of GTIs [s]
			l1events	431859	Number of level 1 events

2.1.4 Events

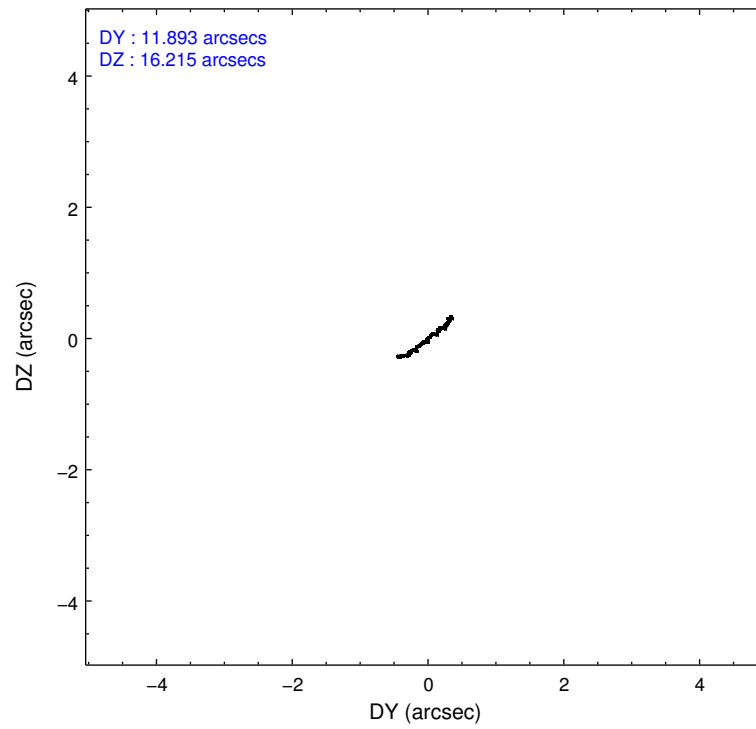
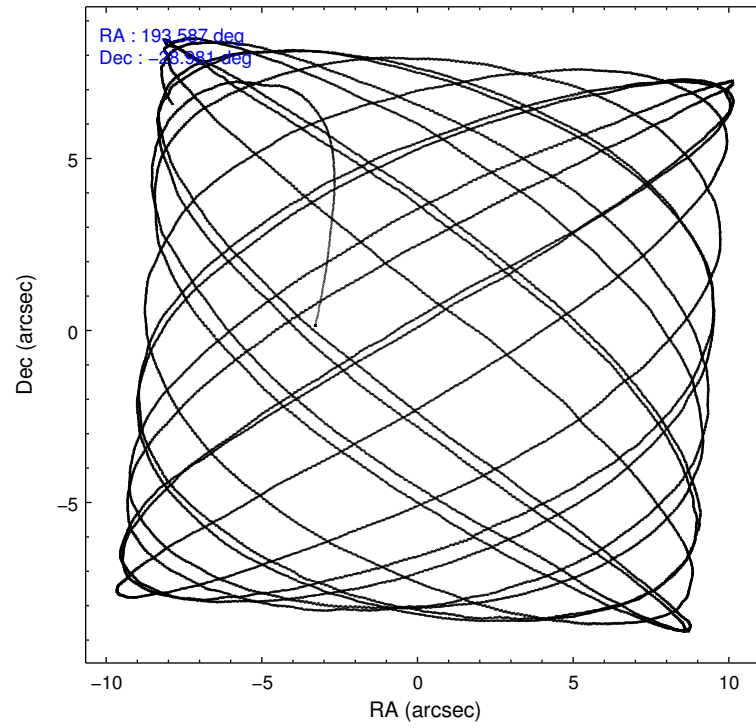
	ccd 0	ccd 1	ccd 2	ccd 3	ccd 6
level 1 events	78532	82754	90592	94519	85462
rejected events	69034	70857	79580	76115	76541
rejected %	87%	85%	87%	80%	89%

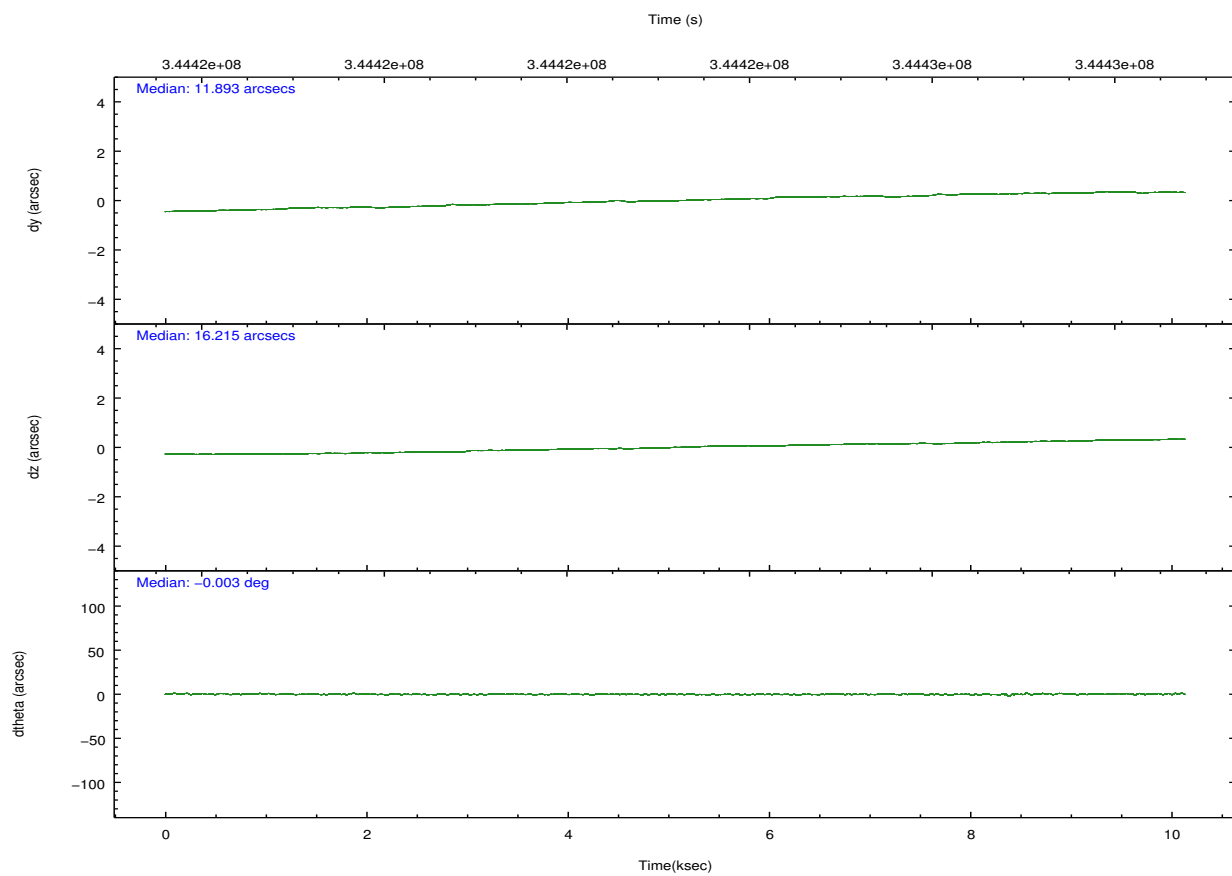
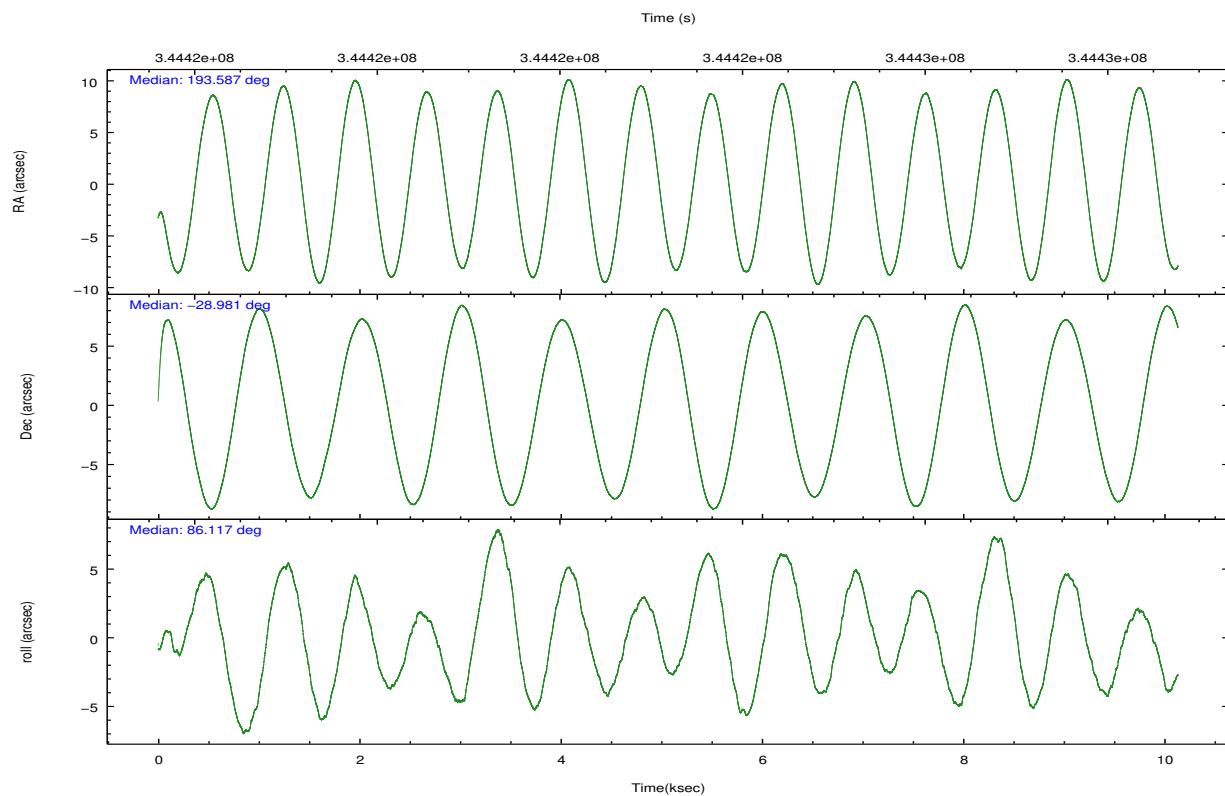
	ccd 0	ccd 1	ccd 2	ccd 3	ccd 6
grade 0 events	3775	5212	5229	11363	3091
	4%	6%	5%	12%	3%
grade 1 events	41	64	70	105	53
	0%	0%	0%	0%	0%
grade 2 events	2181	2452	2227	2806	2010
	2%	2%	2%	2%	2%
grade 3 events	953	1115	990	1232	958
	1%	1%	1%	1%	1%
grade 4 events	894	1059	954	1156	942
	1%	1%	1%	1%	1%
grade 5 events	3023	3318	2781	3603	3544
	3%	4%	3%	3%	4%
grade 6 events	1707	2069	1625	1870	1933
	2%	2%	1%	1%	2%
grade 7 events	65958	67465	76716	72384	72931
	83%	81%	84%	76%	85%

2.2 Compared Parameters

Parameter	Planned	Actual	Parameter	Planned	Actual
Instrument	ACIS	ACIS	Obspar format version number	7	7
Detector	ACIS-01236	ACIS-01236	Obspar file type	PREDICTED	ACTUAL
Grating	NONE	NONE	Obspar update status	NONE	UPDATED
Data mode	VFAINT	VFAINT	CCD I0 on	Y	Y
Observation mode	POINTING	POINTING	CCD I1 on	Y	Y
[deg] Pointing RA	193.600926	193.5869274247618	CCD I2 on	Y	Y
[deg] Pointing Dec	-29.005525	-28.98085781270727	CCD I3 on	Y	Y
[deg] Pointing Roll	85.919794	86.12168184308149	CCD S0 on	N	N
[mm] SIM focus pos	-0.782348	-0.7809083437167272	CCD S1 on	N	N
[mm] SIM defocus	0	0.001439871863259334	CCD S2 on	O1	Y
[mm] SIM translation stage pos	-228.592463	-228.5990329025337	CCD S3 on	N	N
[mm] SIM translation stage offset	-5	-4.993420100396037	CCD S4 on	N	N
[s] Observation start time (MET)	344418241.184000	344417120.38731	CCD S5 on	N	N
Observation start date	2008-11-30T07:42:56	2008-11-30T07:25:20	Number of optional ACIS chips dropped	0	0
[s] Observation end time (MET)	344428241.184000	344428411.27536	On-chip summing requested	N	N
Observation end date	2008-11-30T10:29:36	2008-11-30T10:33:31	Subarray requested	NONE	NONE
Read mode	TIMED	TIMED	Alternating exposures requested	N	N
			[s] Primary exposure time	0.000000	3.1

2.3 Aspect



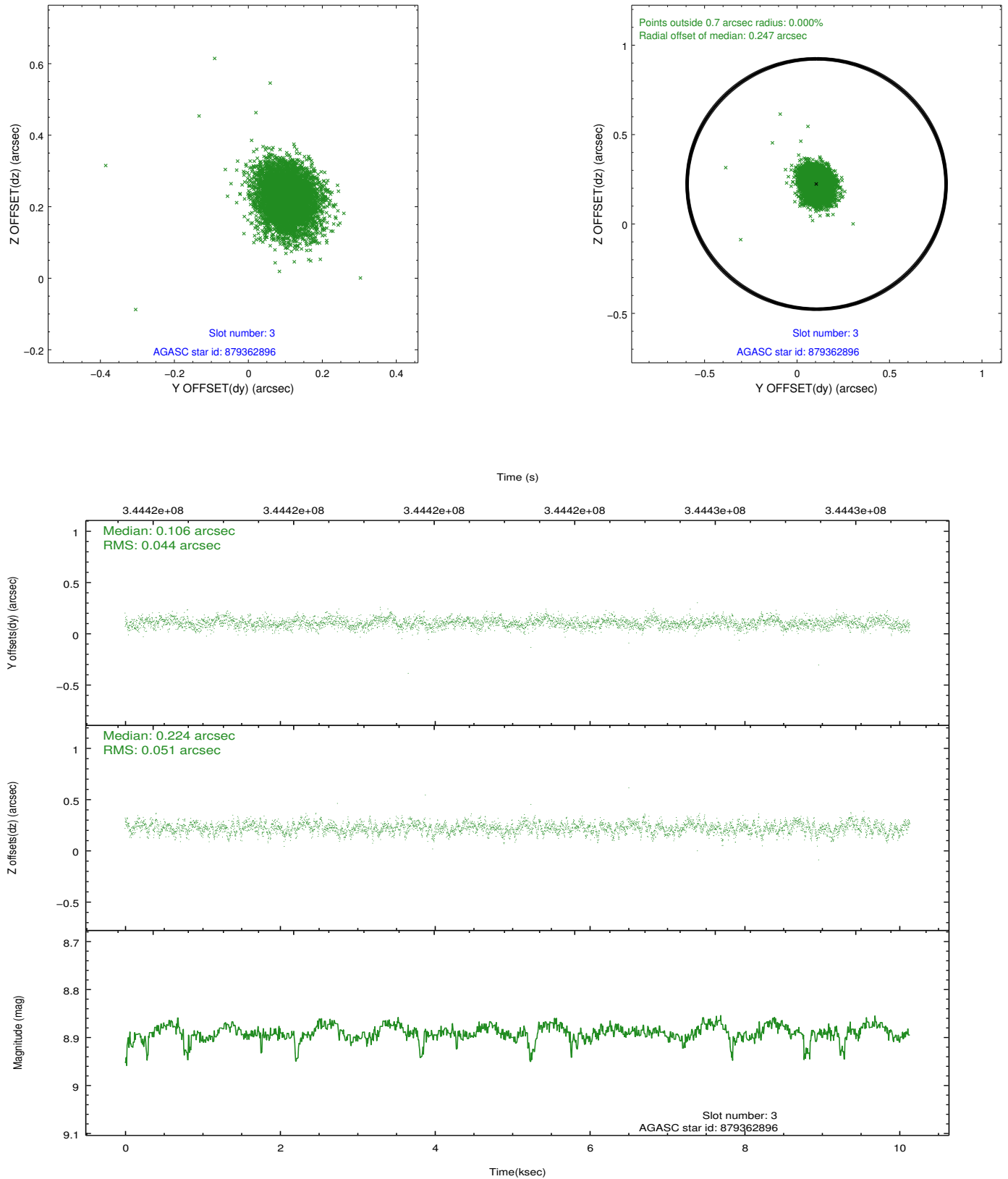


Slot Statistics

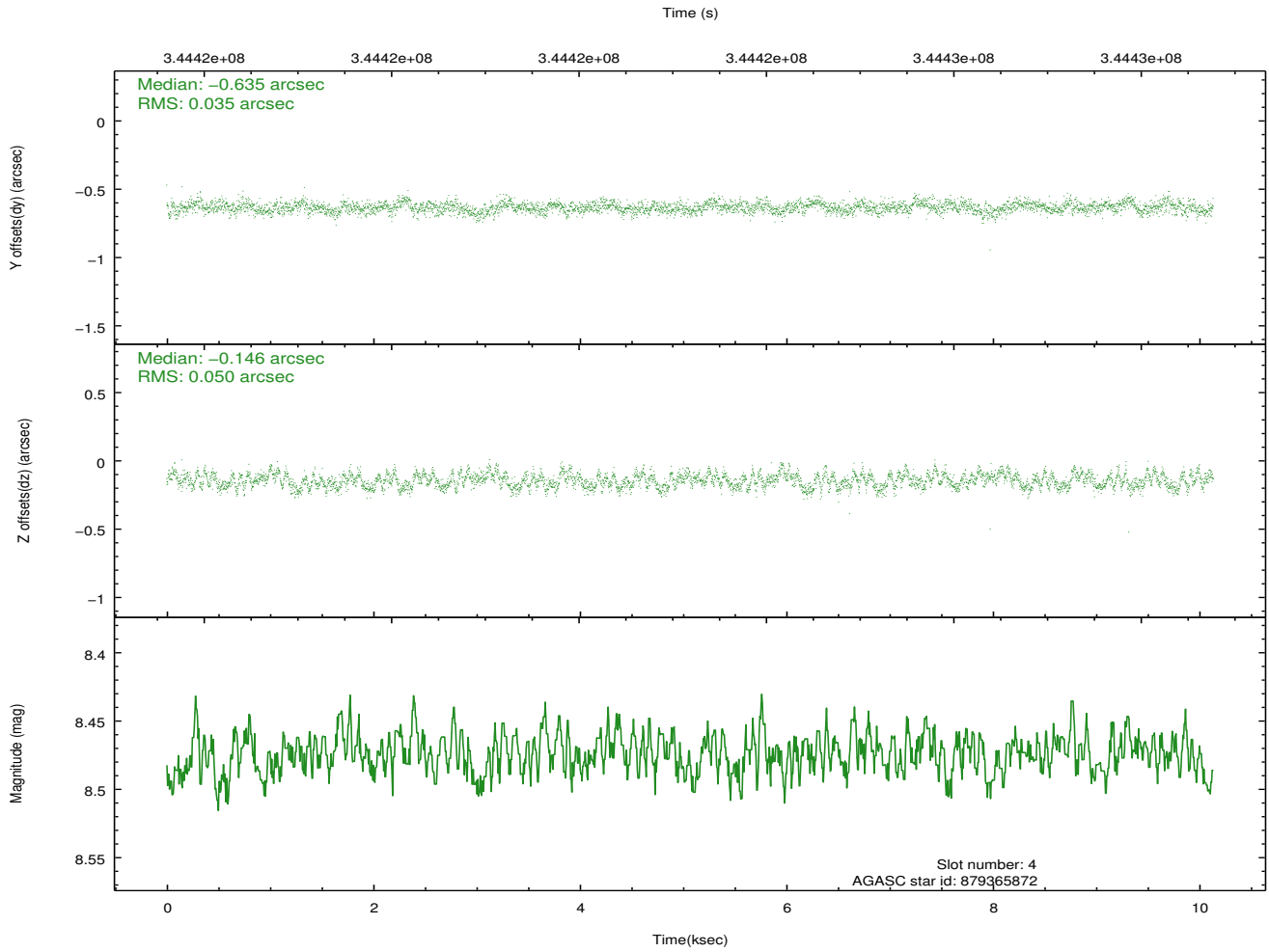
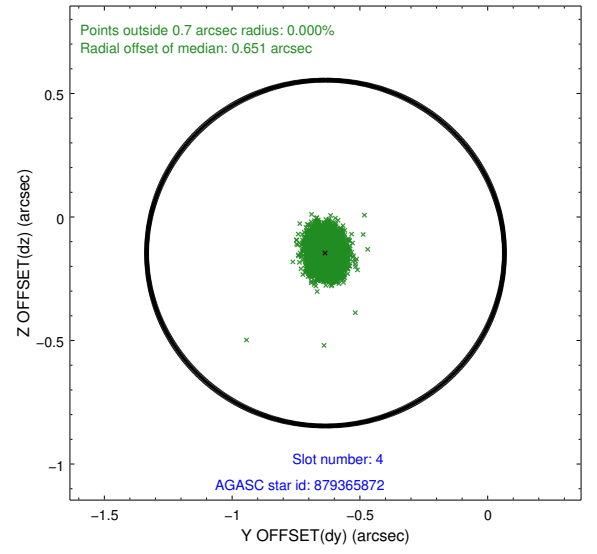
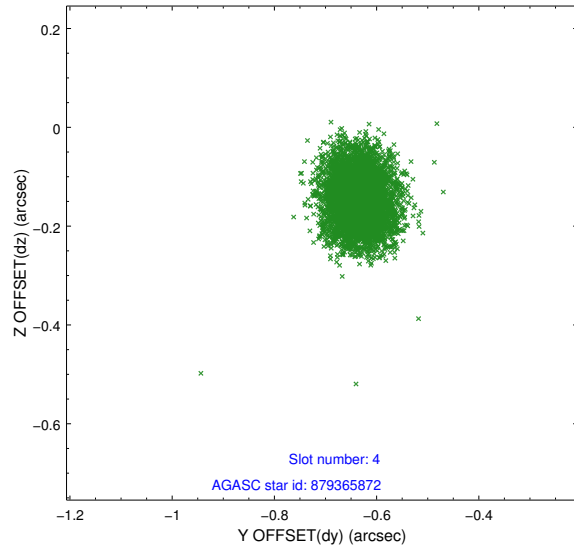
slot	status	id	mag	n_pts	med_dy	med_dz	dr1	dr2	ra	dec	mean_y	mean_z
0	FID	ACIS-I-1	7.00	2472	0.054	-0.014	0.008	0.015	0.000000	0.000000	927.63	-942.32
1	FID	ACIS-I-5	6.98	2472	-0.192	0.065	0.007	0.013	0.000000	0.000000	-1820.46	954.91
2	FID	ACIS-I-6	6.99	2472	0.047	0.020	0.010	0.016	0.000000	0.000000	392.57	1599.99
3	GUIDE	879362896	8.89	4943	0.106	0.224	0.070	0.115	193.646324	-29.438064	-1543.07	-252.53
4	GUIDE	879365872	8.47	4939	-0.635	-0.146	0.064	0.105	193.169843	-28.709125	963.87	1433.47
5	GUIDE	879371832	9.11	4939	0.173	0.243	0.086	0.141	194.118392	-29.345781	-1109.45	-1706.55
6	GUIDE	879366032	8.94	4938	0.111	-0.283	0.105	0.167	192.835243	-28.983192	-99.71	2410.44
7	GUIDE	879362544	8.61	4941	0.249	-0.040	0.068	0.112	193.151674	-29.493997	-1856.98	1279.40

2.4 Star Slots

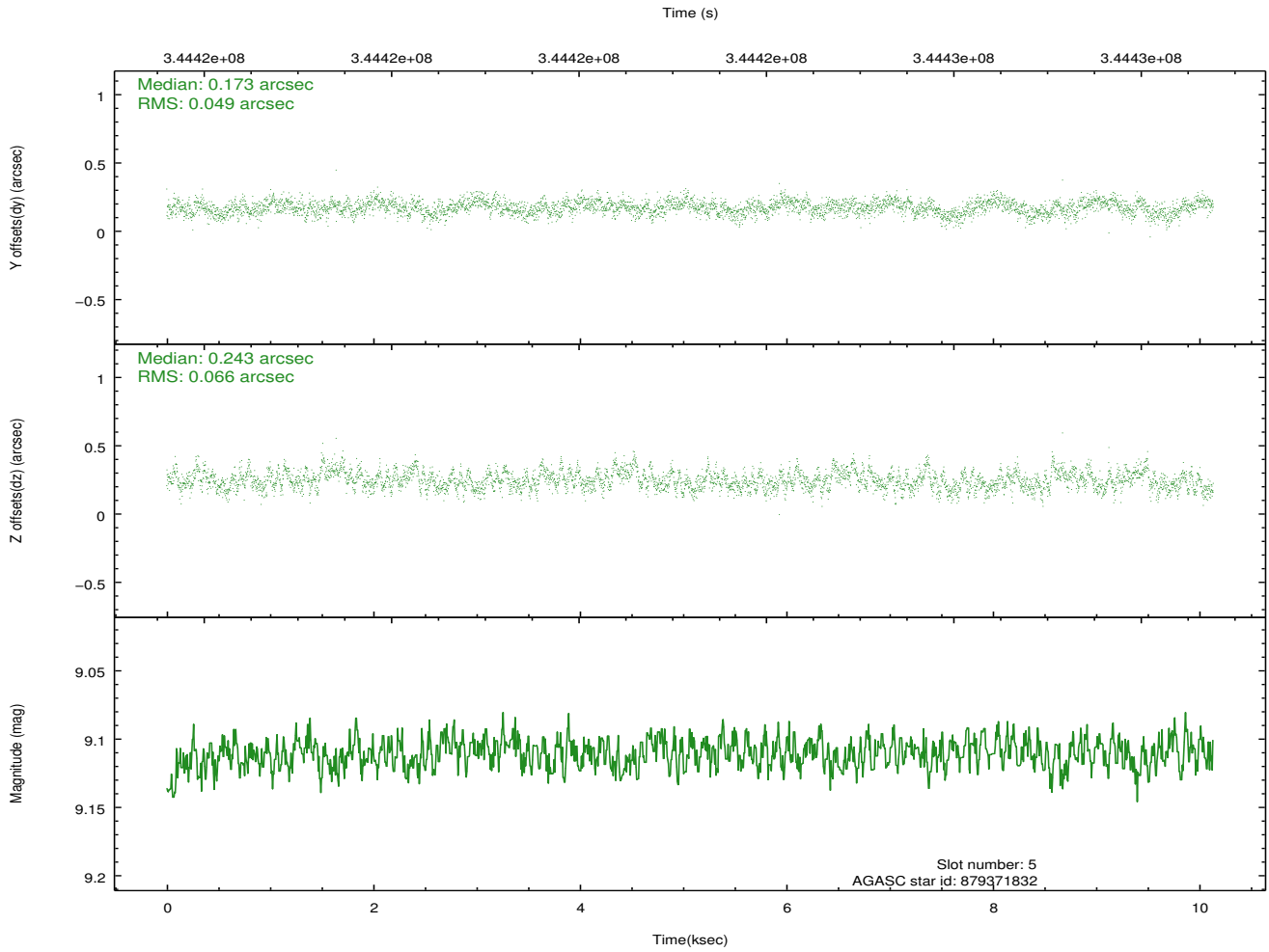
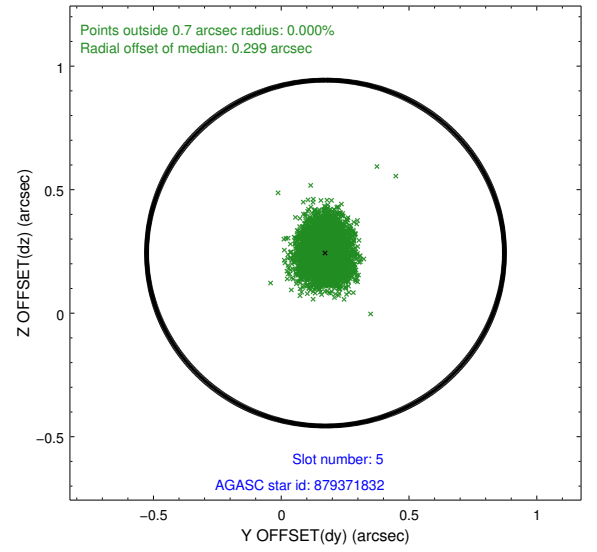
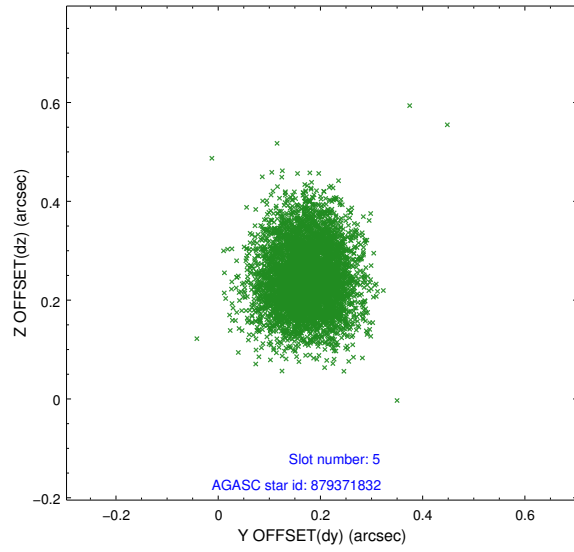
2.4.1 Slot 3



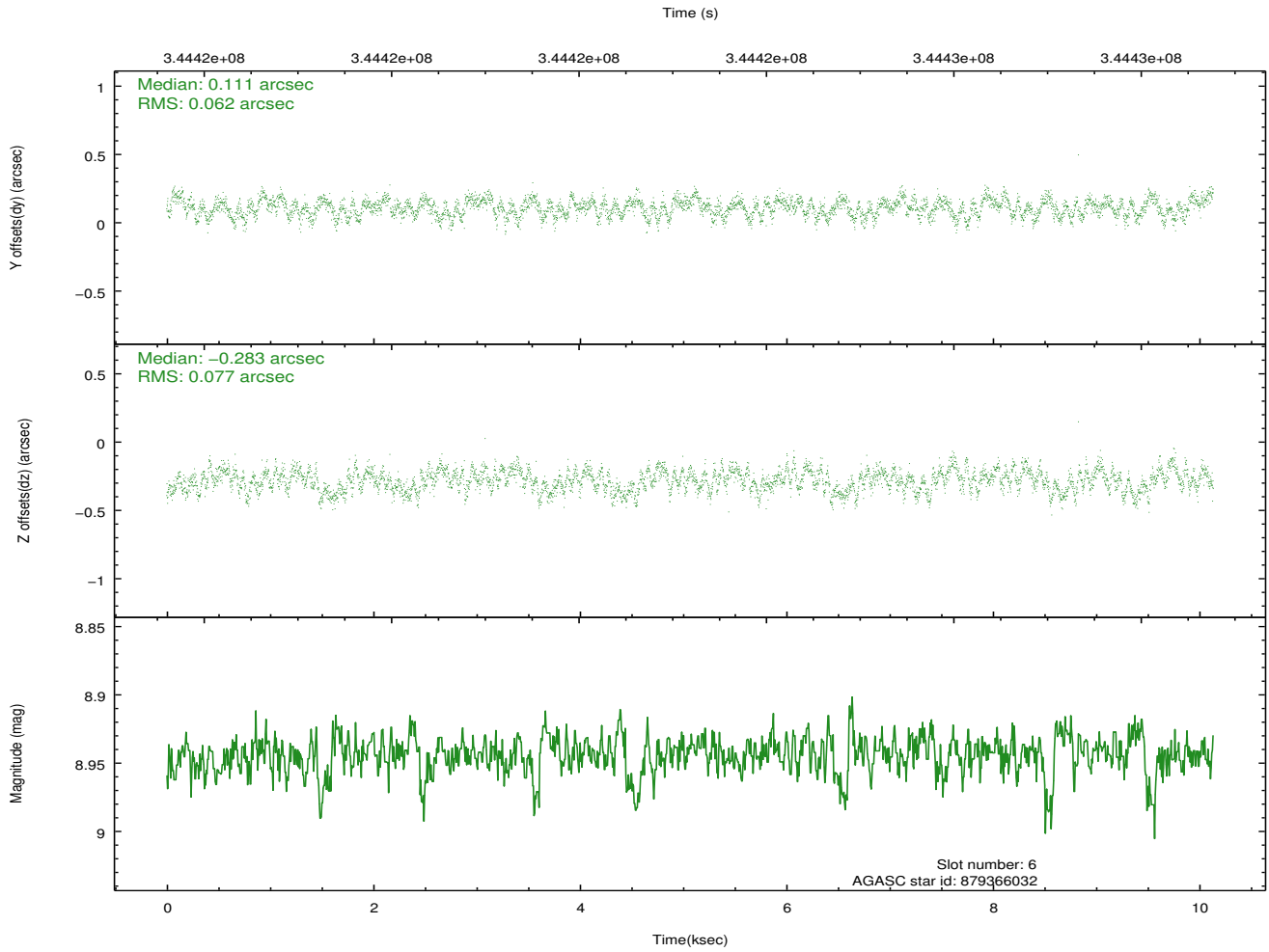
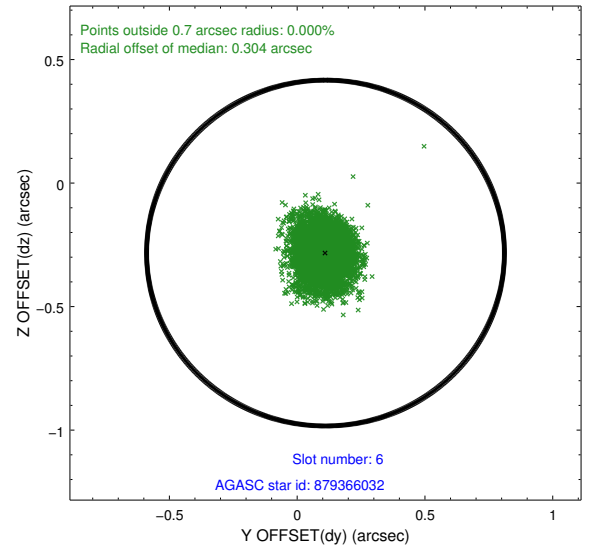
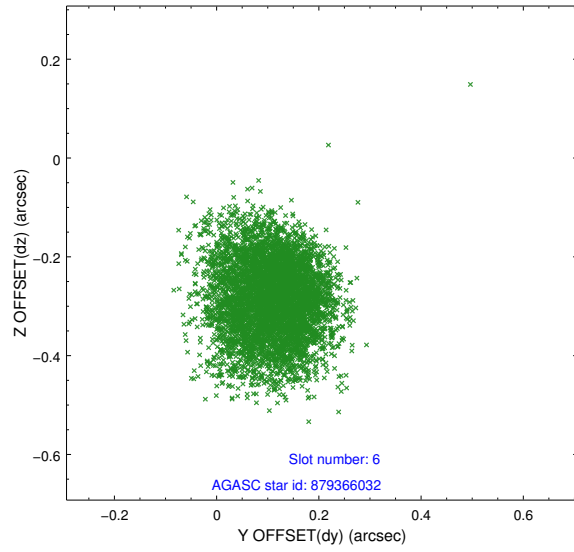
2.4.2 Slot 4



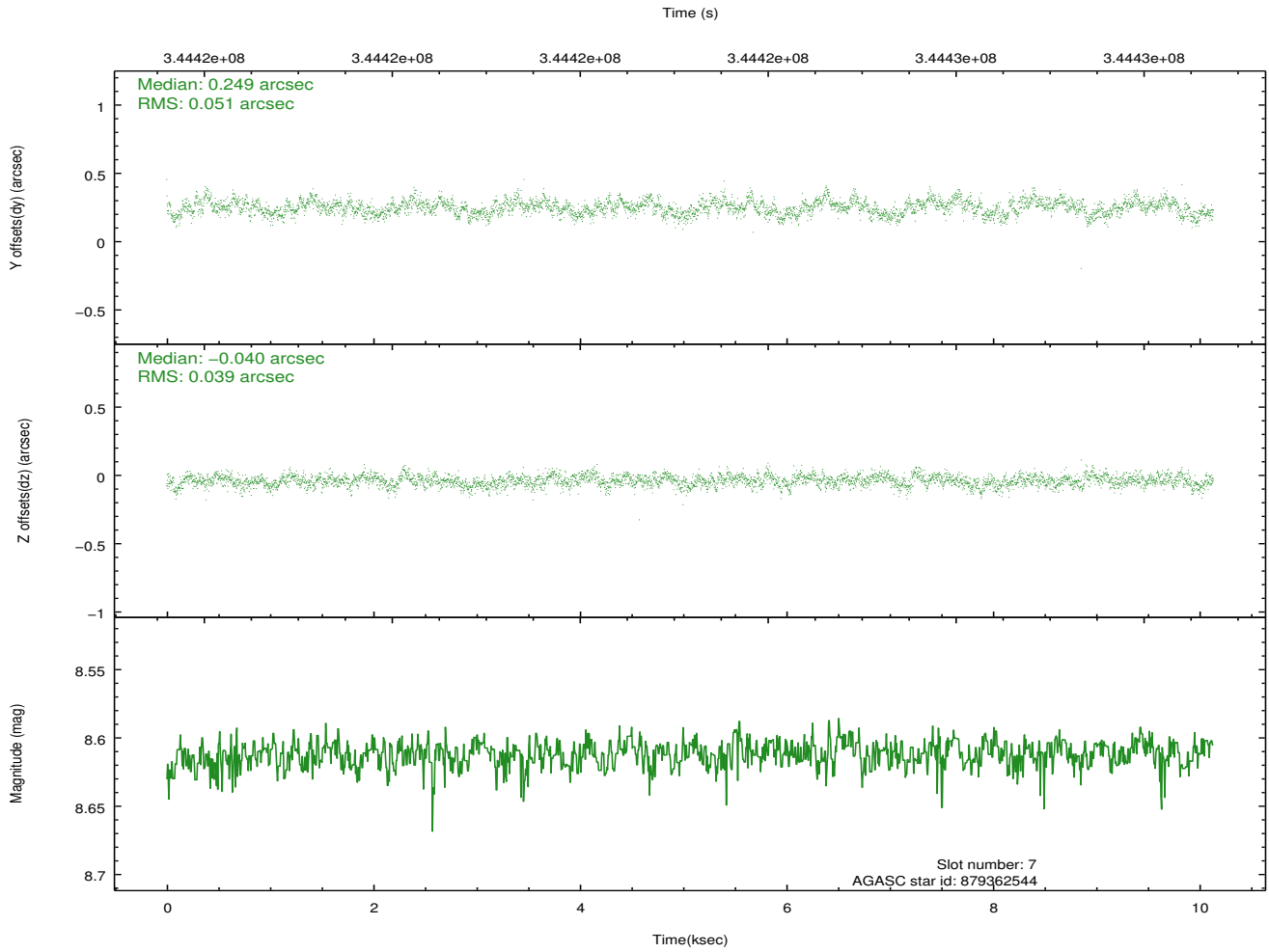
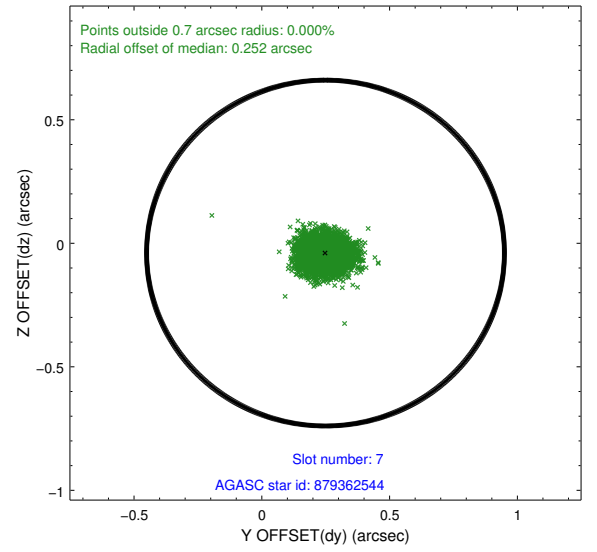
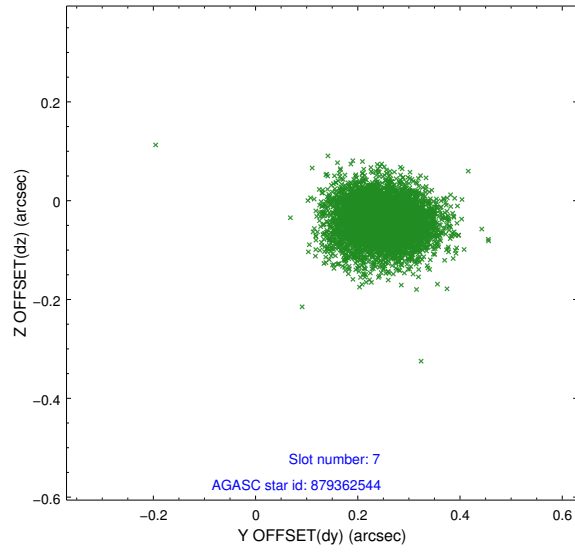
2.4.3 Slot 5



2.4.4 Slot 6

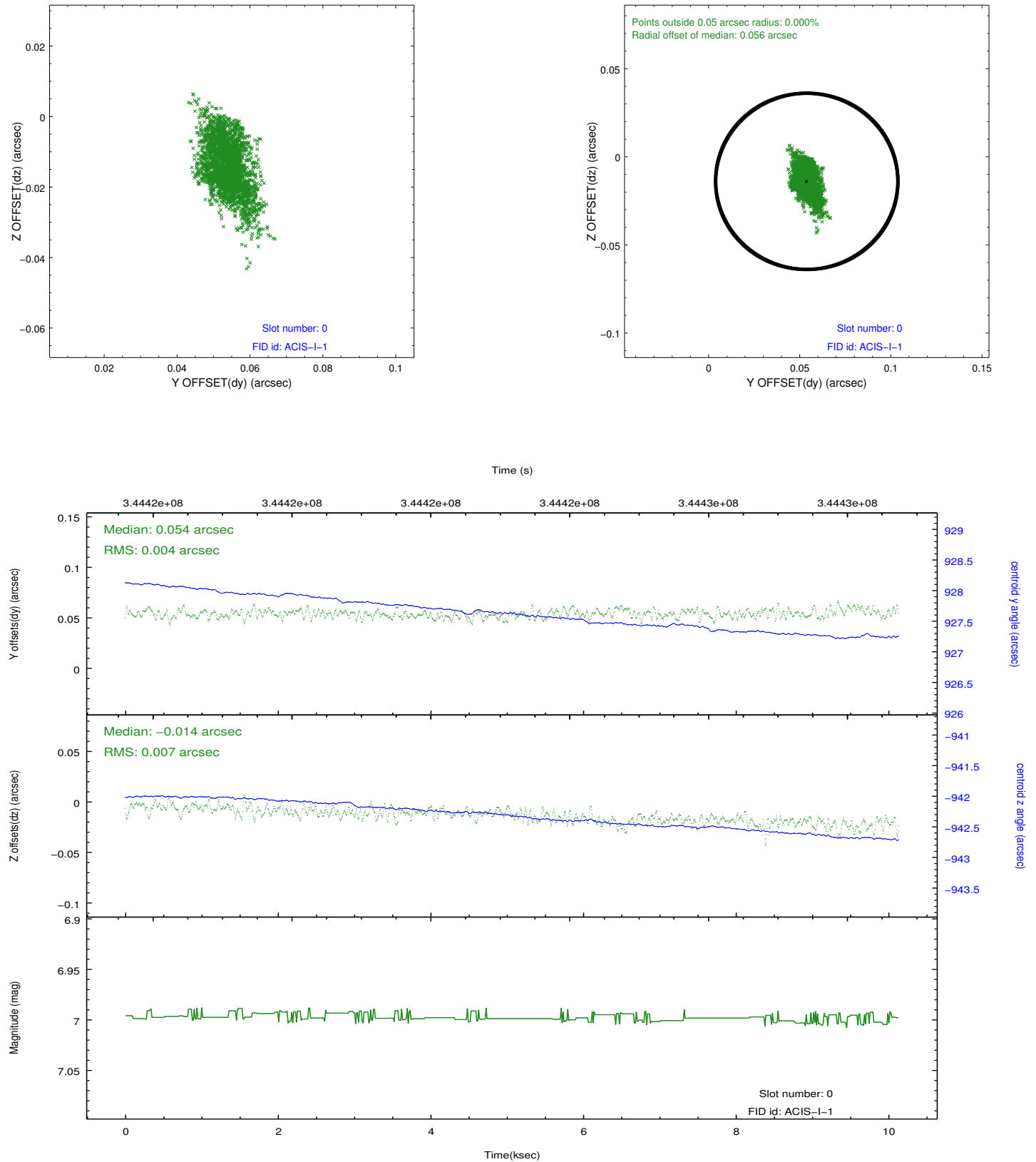


2.4.5 Slot 7

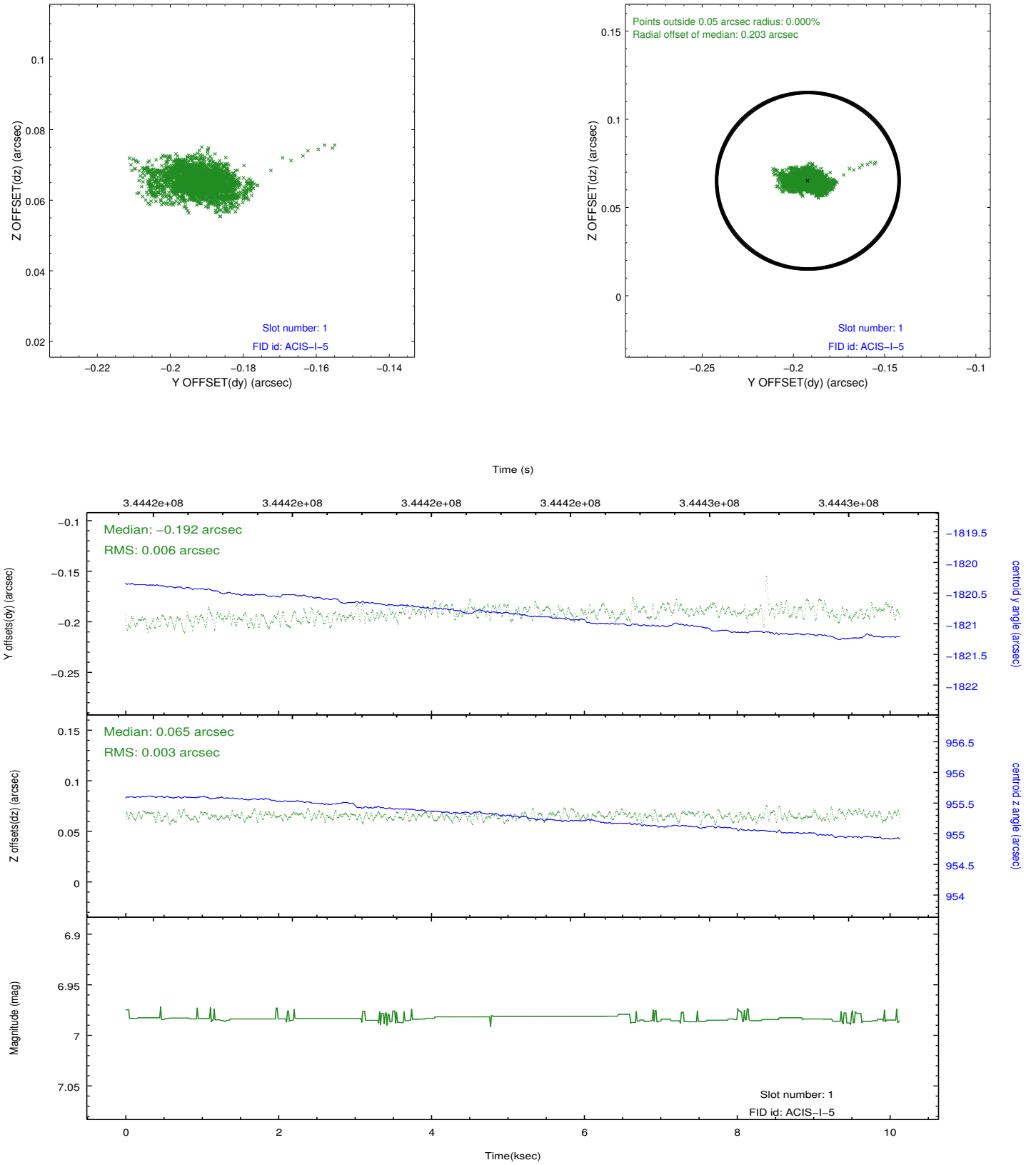


2.5 FID Slots

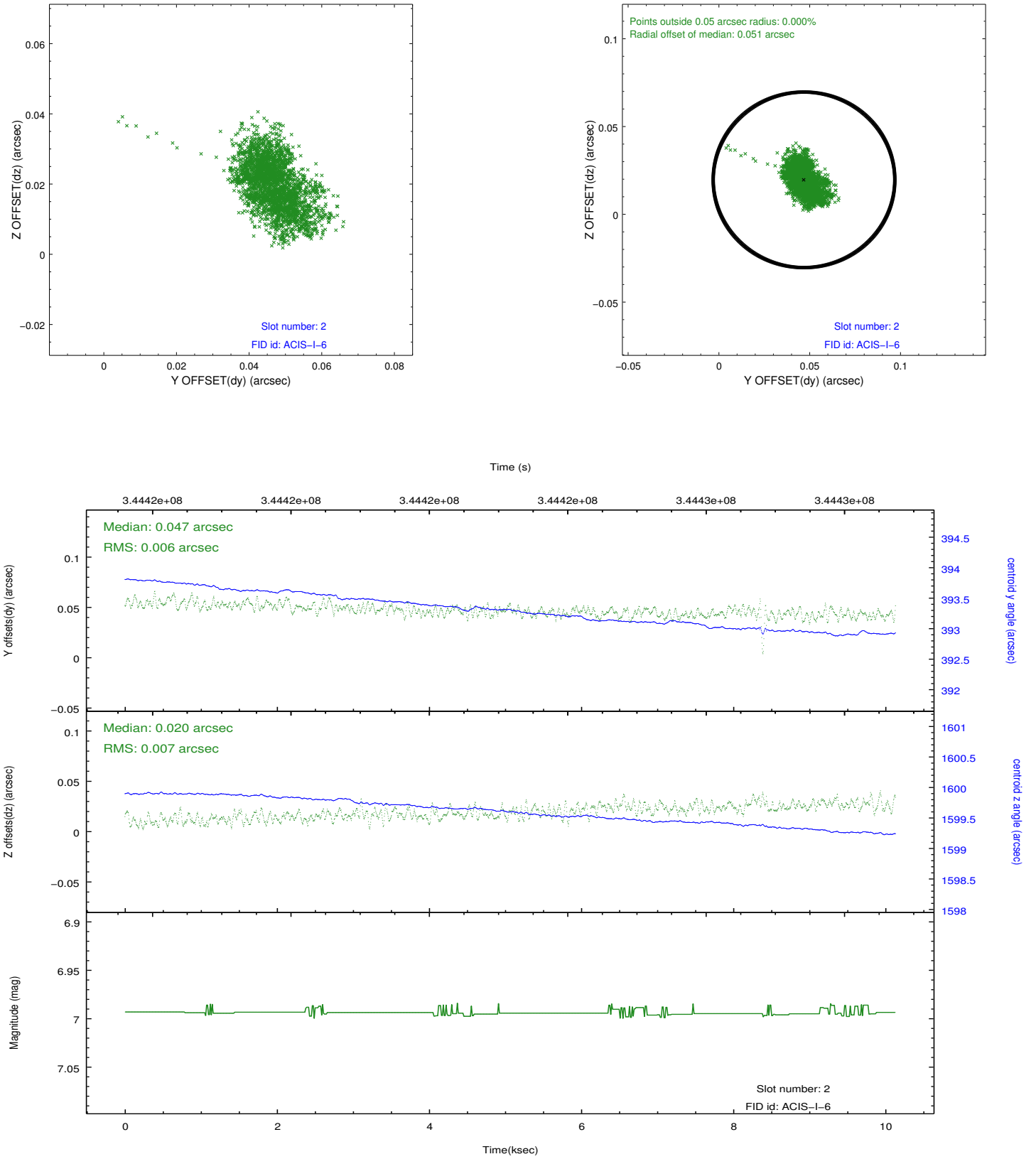
2.5.1 Slot 0



2.5.2 Slot 1



2.5.3 Slot 2



A Summary

A.1 Status

V&V Scientist	Jen Lauer
V&V Date (YYYY-MM-DD)	2012.05.31
V&V Edition	1
V&V Disposition and Status	OK
V&V Charge Time	10.1308

A.2 Comments