

# V&V Reference Report

## L2 ASCDS Version : 8.4.4

Observation 10457 - L2 Version 2  
Chandra X-Ray Center

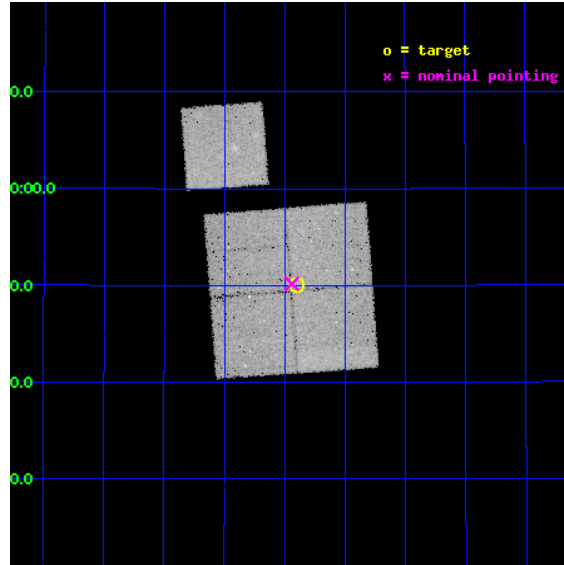
L2 Processing Date : May 25 2012

## Contents

<b>1</b>	<b>Front</b>	<b>2</b>
<b>2</b>	<b>OBI</b>	<b>3</b>
2.1	OBI . . . . .	3
2.1.1	Images . . . . .	3
2.1.2	Bias . . . . .	3
2.1.3	Parameters . . . . .	4
2.1.4	Events . . . . .	4
2.2	Compared Parameters . . . . .	5
2.3	Aspect . . . . .	6
2.4	Star Slots . . . . .	9
2.4.1	Slot 3 . . . . .	9
2.4.2	Slot 4 . . . . .	10
2.4.3	Slot 5 . . . . .	11
2.4.4	Slot 6 . . . . .	12
2.4.5	Slot 7 . . . . .	13
2.5	FID Slots . . . . .	14
2.5.1	Slot 0 . . . . .	14
2.5.2	Slot 1 . . . . .	15
2.5.3	Slot 2 . . . . .	16
<b>A</b>	<b>Summary</b>	<b>17</b>
A.1	Status . . . . .	17
A.2	Comments . . . . .	17

# 1 Front

seq_num	800818	Sequence number
obs_id	10457	Observation id
title	The Role of AGN in Massive Galaxy Formation	Proposal title
observer	Dr. Spencer Stanford	Principal investigator
object	ISCS1036+1088	Source name
dtcycle	0	&#160
cycle	P	events from which exps? Prim/Second/Both
ra_targ	218.100833	Observer's specified target RA [deg]
dec_targ	32.834361	Observer's specified target Dec [deg]
ra_nom	218.1102074944	Nominal RA [deg]
dec_nom	32.836184781601	Nominal Dec [deg]
roll_nom	355.679635399	Nominal Roll [deg]
revision	2	Processing version of data
ontime	35032.977328718	Sum of GTIs [s]
liveltime	34575.245689015	Livetime [s]
ontime0	35042.400269508	Sum of GTIs [s]
ontime1	35042.400269508	Sum of GTIs [s]
ontime2	35036.118478239	Sum of GTIs [s]
ontime3	35032.977328718	Sum of GTIs [s]
ontime6	35039.259289265	Sum of GTIs [s]
l2events	124216	Number of level 2 events

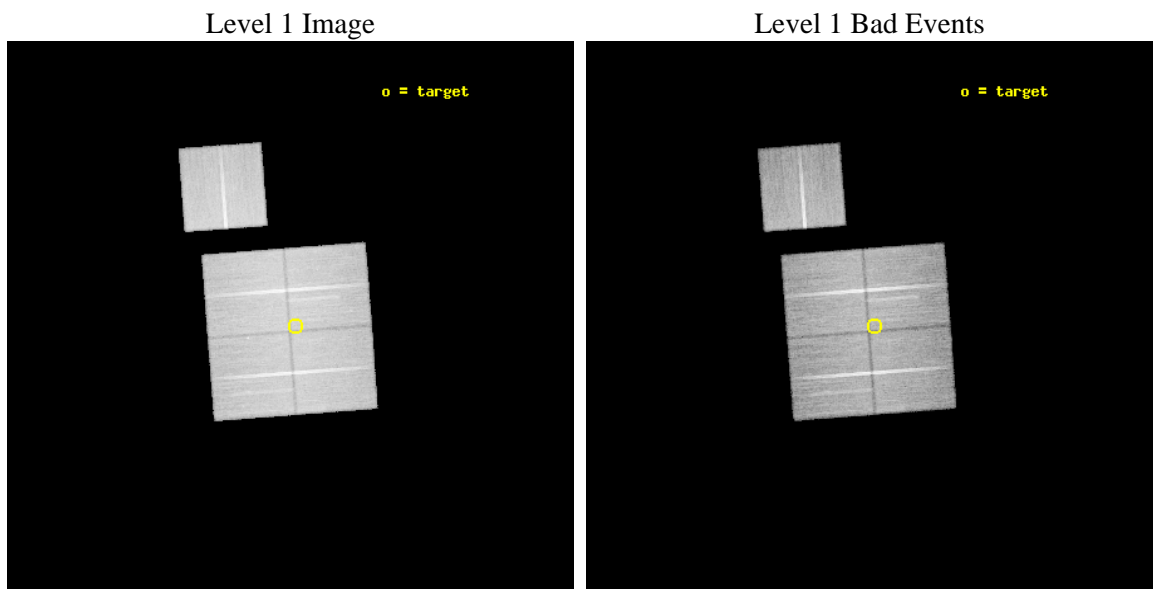




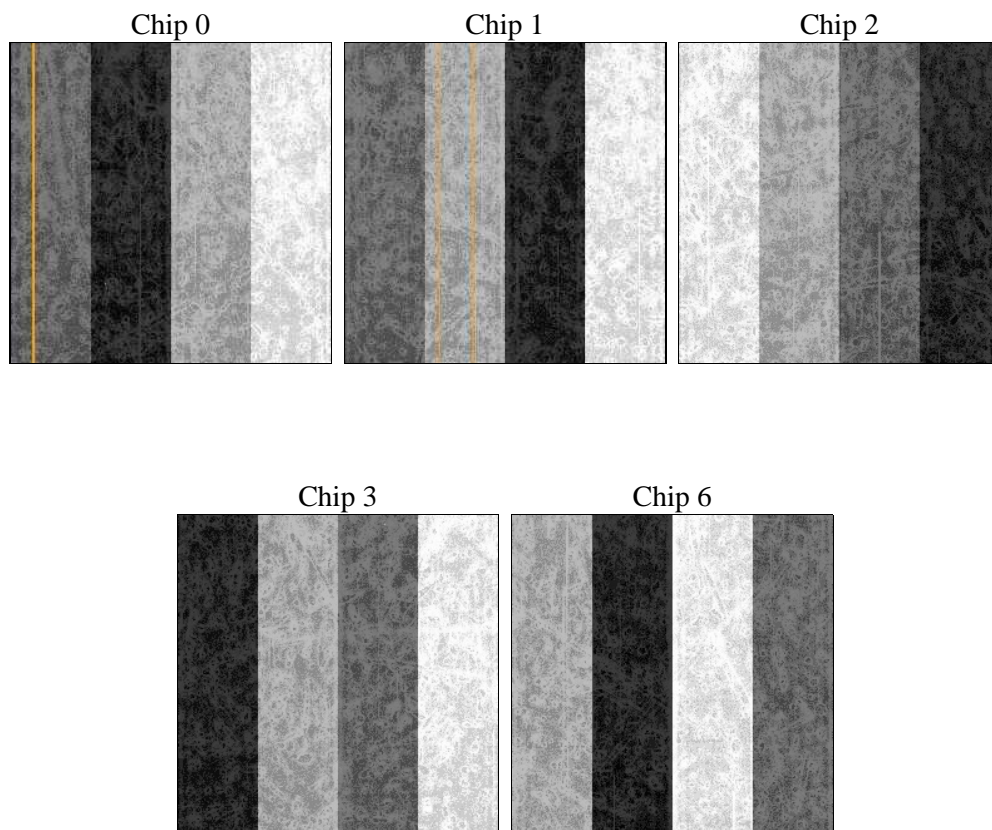
## 2 OBI

### 2.1 OBI

#### 2.1.1 Images



#### 2.1.2 Bias



### 2.1.3 Parameters

obi_num	0	Obi number	sched_exp_time	34861.000000	[s] Scheduled observation exposure time
ascdsver	8.4.4	Processing system revision	ontime	35032.977328718	Sum of GTIs [s]
caldbver	4.4.9	&#160	ontime0	35042.400269508	Sum of GTIs [s]
date	2012-05-25T06:33:05	Date and time of file creation	ontime1	35042.400269508	Sum of GTIs [s]
revision	2	Processing version of data	ontime2	35036.118478239	Sum of GTIs [s]
			ontime3	35032.977328718	Sum of GTIs [s]
			ontime6	35039.259289265	Sum of GTIs [s]
			l1events	1419697	Number of level 1 events

### 2.1.4 Events

	ccd 0	ccd 1	ccd 2	ccd 3	ccd 6
level 1 events	273829	268854	302850	284999	289165
rejected events	244137	236222	274678	257168	258577
rejected %	89%	87%	90%	90%	89%

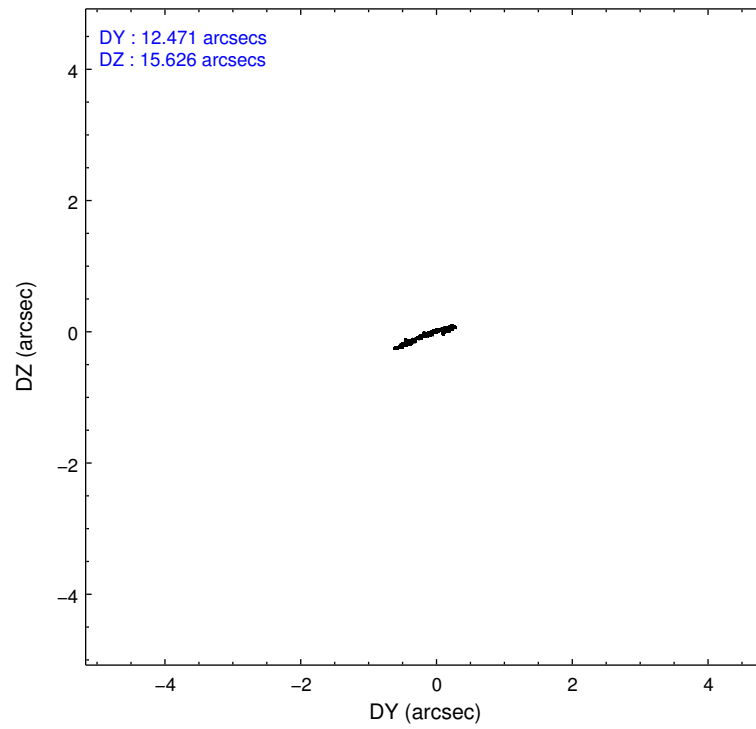
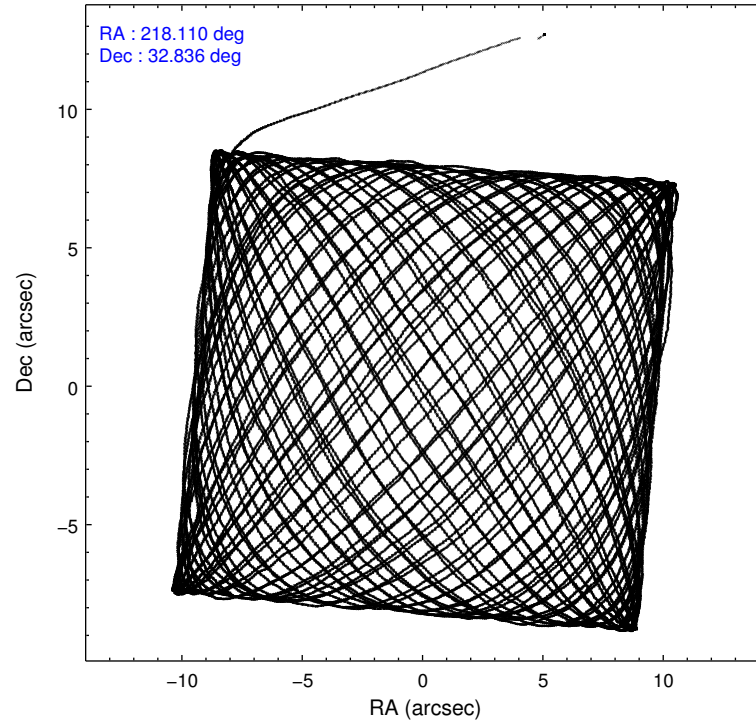
  

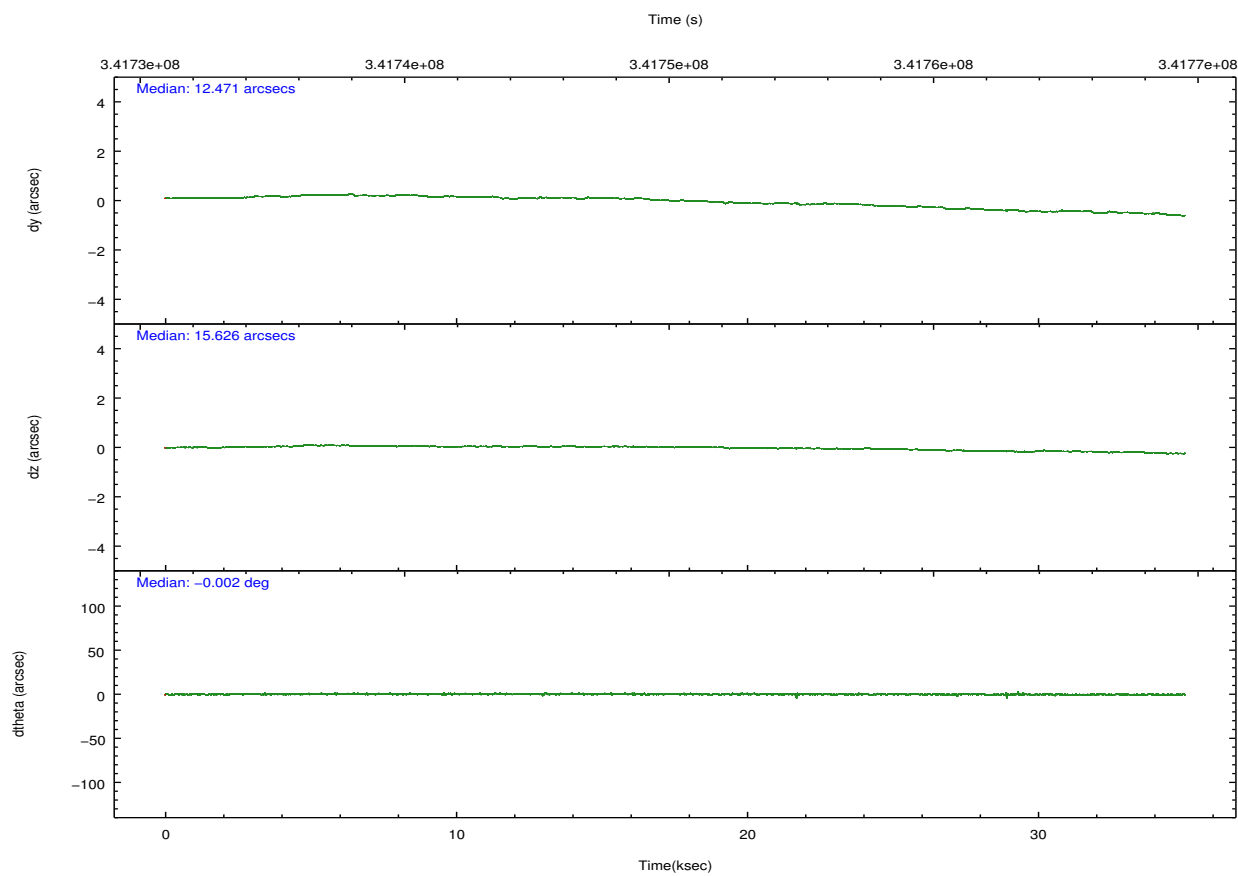
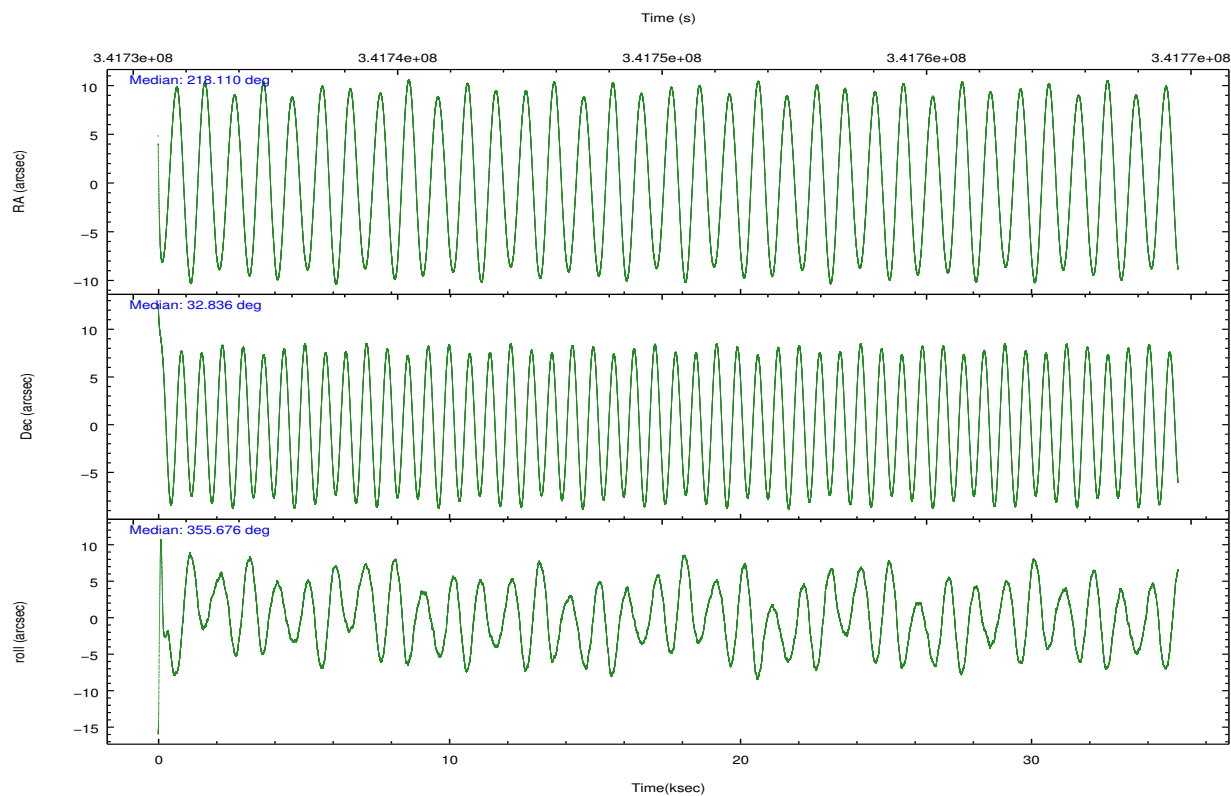
	ccd 0	ccd 1	ccd 2	ccd 3	ccd 6
grade 0 events	10812	11947	10320	10171	11201
	3%	4%	3%	3%	3%
grade 1 events	147	146	191	154	153
	0%	0%	0%	0%	0%
grade 2 events	7193	7598	6918	6211	6876
	2%	2%	2%	2%	2%
grade 3 events	3186	3416	2920	3187	3275
	1%	1%	0%	1%	1%
grade 4 events	3076	3471	3076	3035	3222
	1%	1%	1%	1%	1%
grade 5 events	10661	11522	9953	11926	11818
	3%	4%	3%	4%	4%
grade 6 events	5861	6693	5354	5612	6510
	2%	2%	1%	1%	2%
grade 7 events	232893	224061	264118	244703	246110
	85%	83%	87%	85%	85%

## 2.2 Compared Parameters

Parameter	Planned	Actual	Parameter	Planned	Actual
Instrument	ACIS	ACIS	Obspar format version number	7	7
Detector	ACIS-01236	ACIS-01236	Obspar file type	PREDICTED	ACTUAL
Grating	NONE	NONE	Obspar update status	NONE	UPDATED
Data mode	VFAINT	VFAINT	CCD I0 on	Y	Y
Observation mode	POINTING	POINTING	CCD I1 on	Y	Y
[deg] Pointing RA	218.080774	218.1102074944023	CCD I2 on	Y	Y
[deg] Pointing Dec	32.824156	32.83618478160068	CCD I3 on	Y	Y
[deg] Pointing Roll	355.486922	355.6796353990038	CCD S0 on	N	N
[mm] SIM focus pos	-0.782348	-0.7809083437167272	CCD S1 on	N	N
[mm] SIM defocus	0	0.001439871863259334	CCD S2 on	O1	Y
[mm] SIM translation stage pos	-233.592463	-233.5874344608287	CCD S3 on	N	N
[mm] SIM translation stage offset	0	-0.005018542100998502	CCD S4 on	N	N
[s] Observation start time (MET)	341732875.184000	341731605.39232	CCD S5 on	N	N
Observation start date	2008-10-30T05:46:50	2008-10-30T05:26:45	Number of optional ACIS chips dropped	0	0
[s] Observation end time (MET)	341767736.184000	341768335.75663	On-chip summing requested	N	N
Observation end date	2008-10-30T15:27:51	2008-10-30T15:38:55	Subarray requested	NONE	NONE
Read mode	TIMED	TIMED	Alternating exposures requested	N	N
			[s] Primary exposure time	0.000000	3.1

## 2.3 Aspect



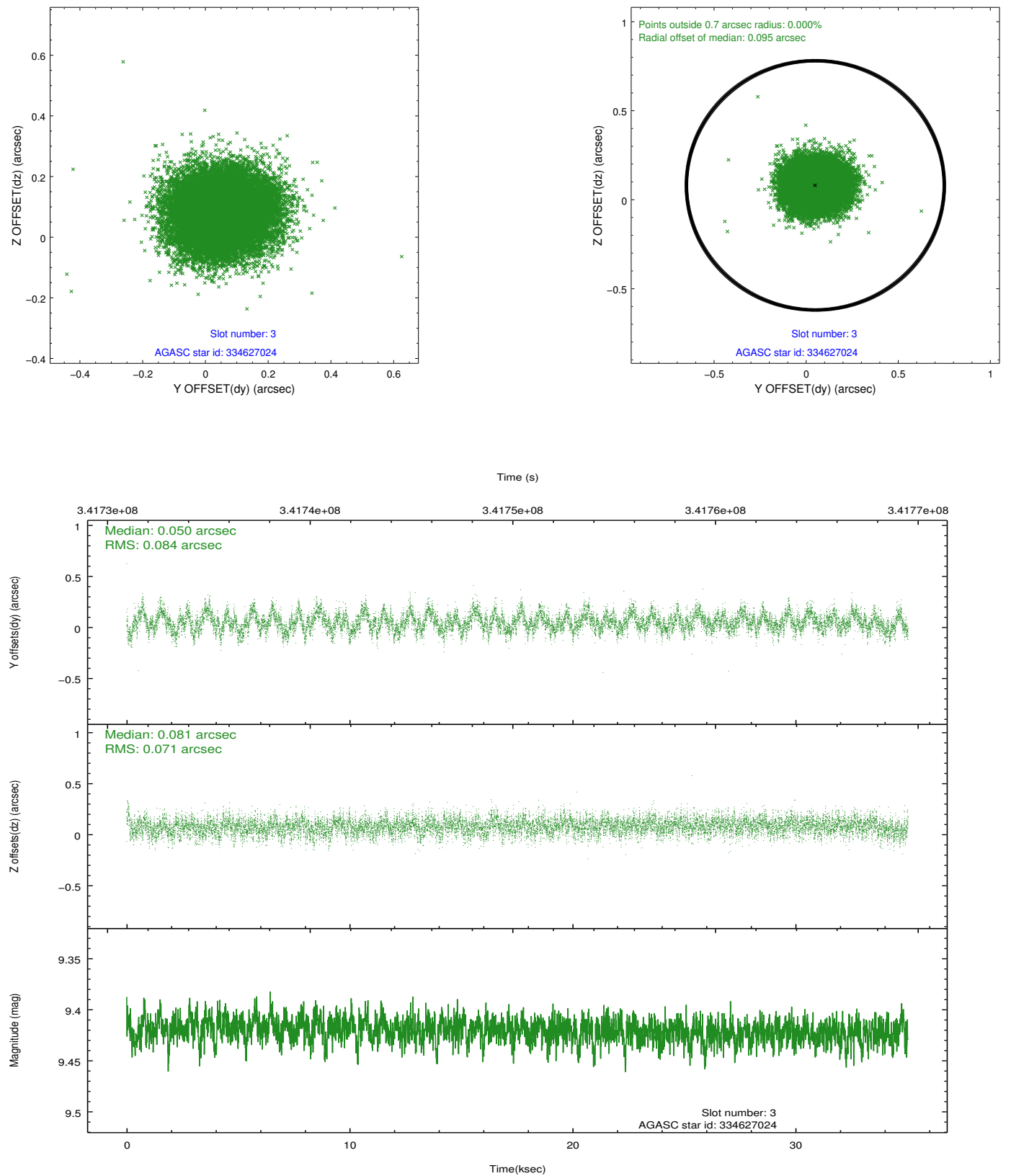


### Slot Statistics

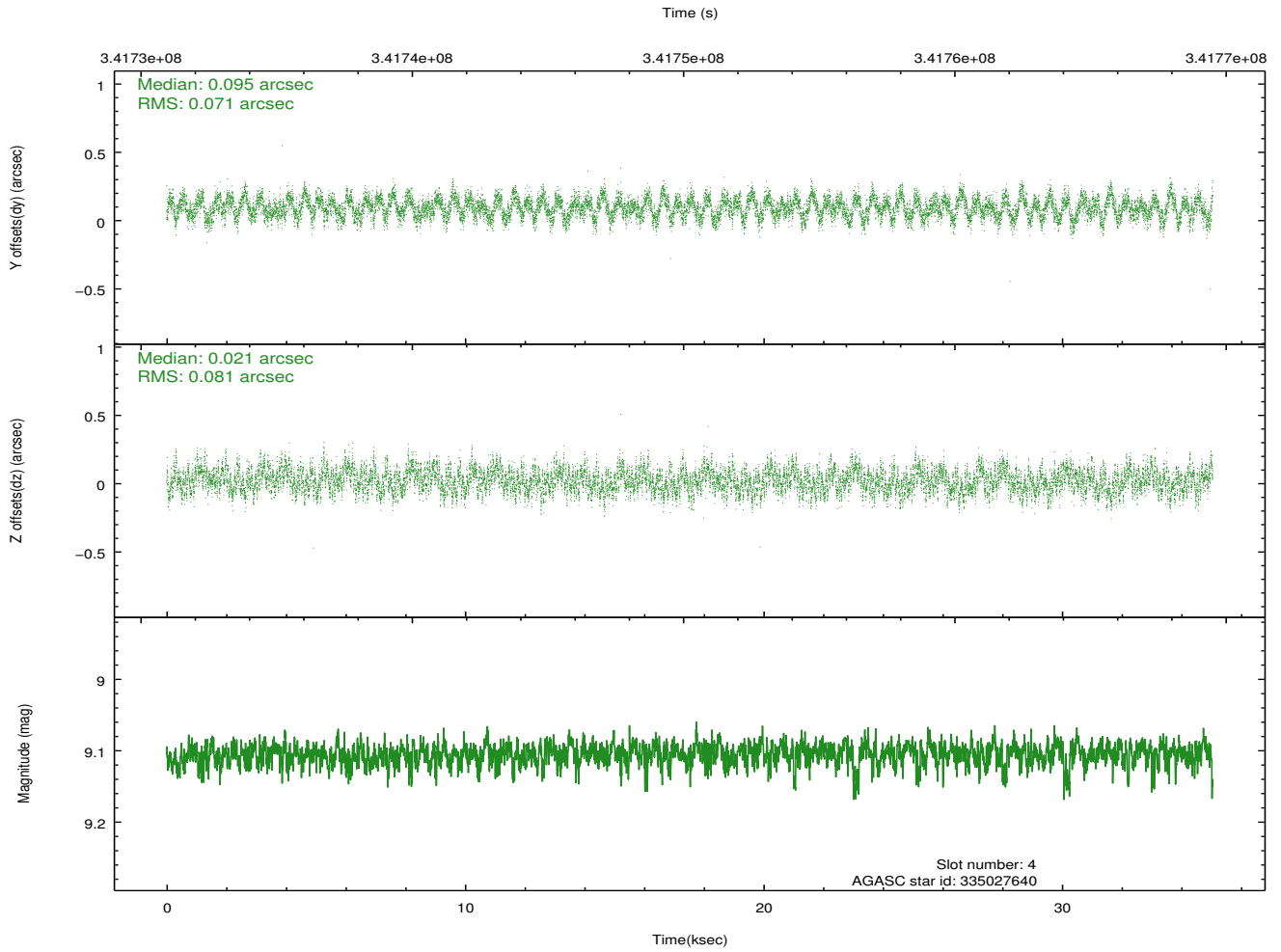
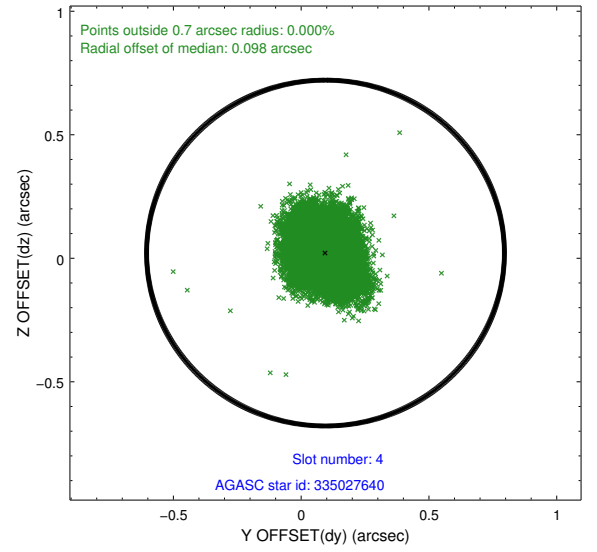
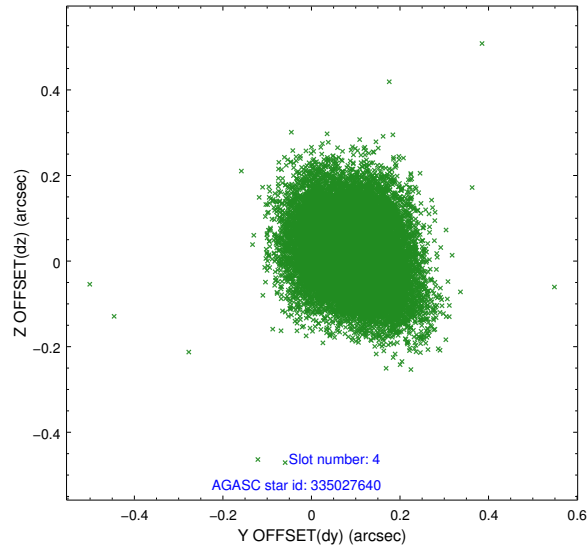
slot	status	id	mag	n_pts	med_dy	med_dz	dr1	dr2	ra	dec	mean_y	mean_z
0	FID	ACIS-I-1	7.01	8547	0.038	-0.028	0.010	0.020	0.000000	0.000000	927.16	-839.24
1	FID	ACIS-I-5	7.00	8548	-0.174	0.049	0.012	0.020	0.000000	0.000000	-1821.12	1058.32
2	FID	ACIS-I-6	7.00	8549	0.045	0.049	0.008	0.013	0.000000	0.000000	392.69	1702.85
3	GUIDE	334627024	9.42	17076	0.050	0.081	0.118	0.189	217.318801	32.278221	-2157.46	-2133.67
4	GUIDE	335027640	9.10	17089	0.095	0.021	0.115	0.183	218.092211	33.193770	-70.25	1329.21
5	GUIDE	335029384	8.49	17094	0.002	-0.016	0.076	0.120	217.848061	33.088477	-774.27	893.99
6	GUIDE	335029528	10.37	17041	-0.051	-0.028	0.174	0.277	218.786422	33.290416	1984.53	1847.57
7	GUIDE	335027600	10.42	17062	-0.095	-0.061	0.187	0.304	218.618512	33.447101	1433.92	2366.76

## 2.4 Star Slots

### 2.4.1 Slot 3

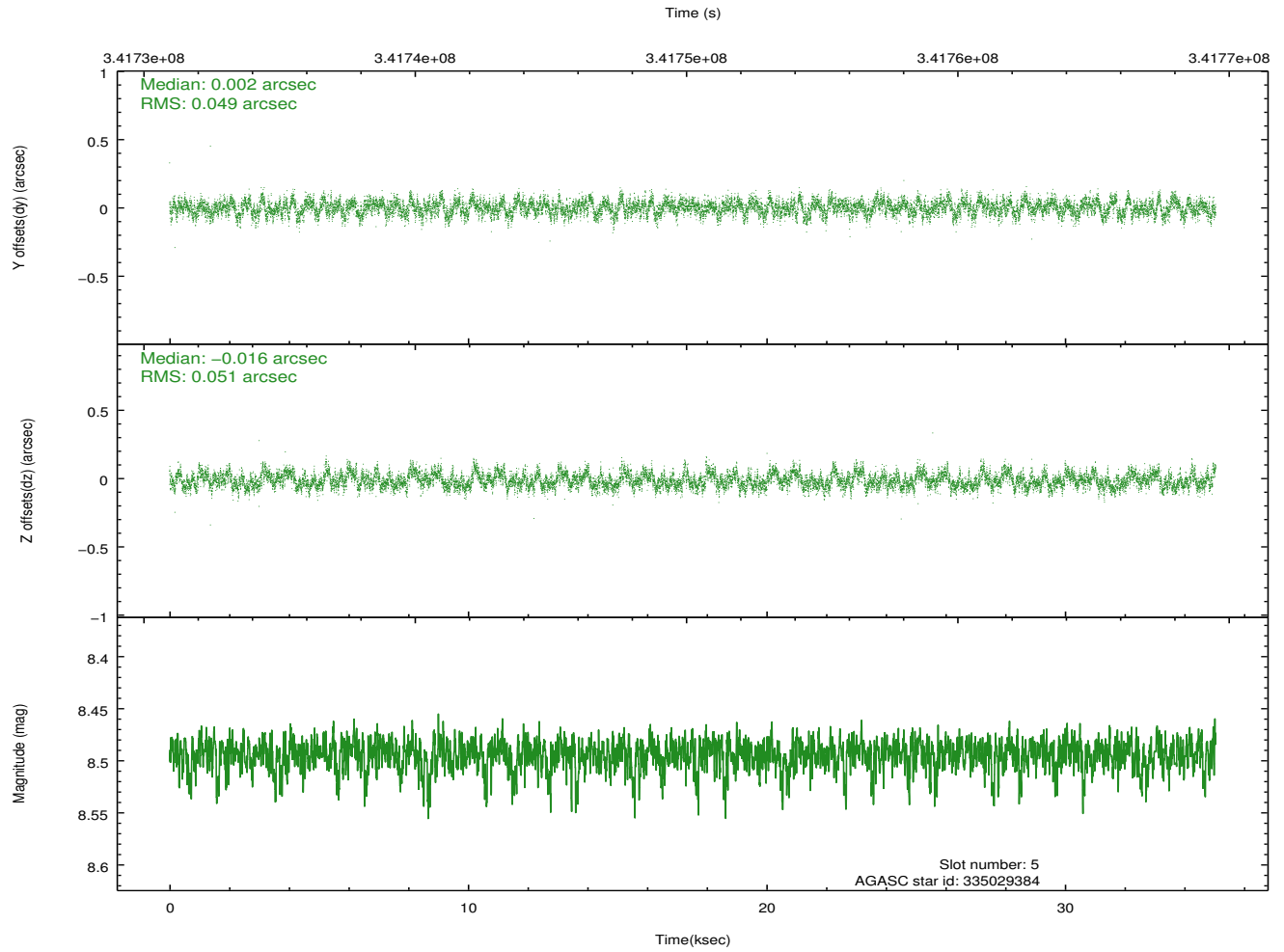
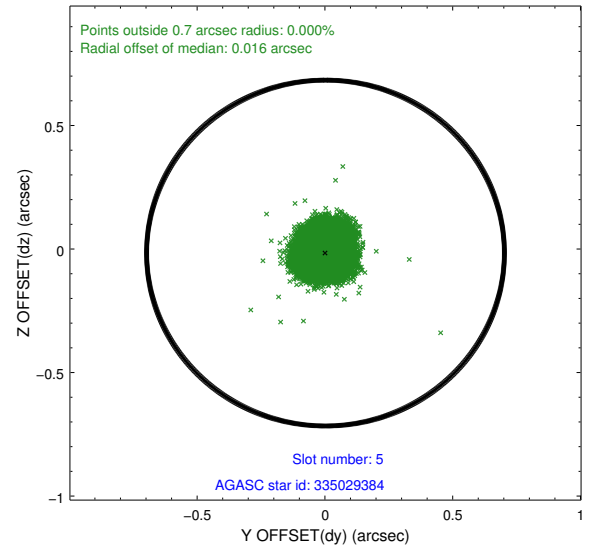
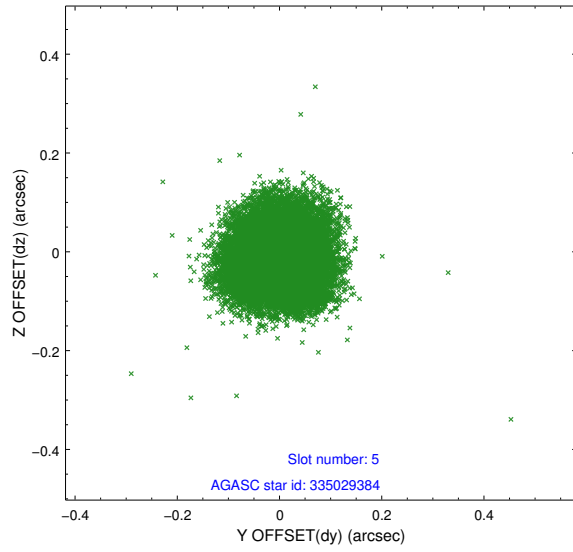


## 2.4.2 Slot 4

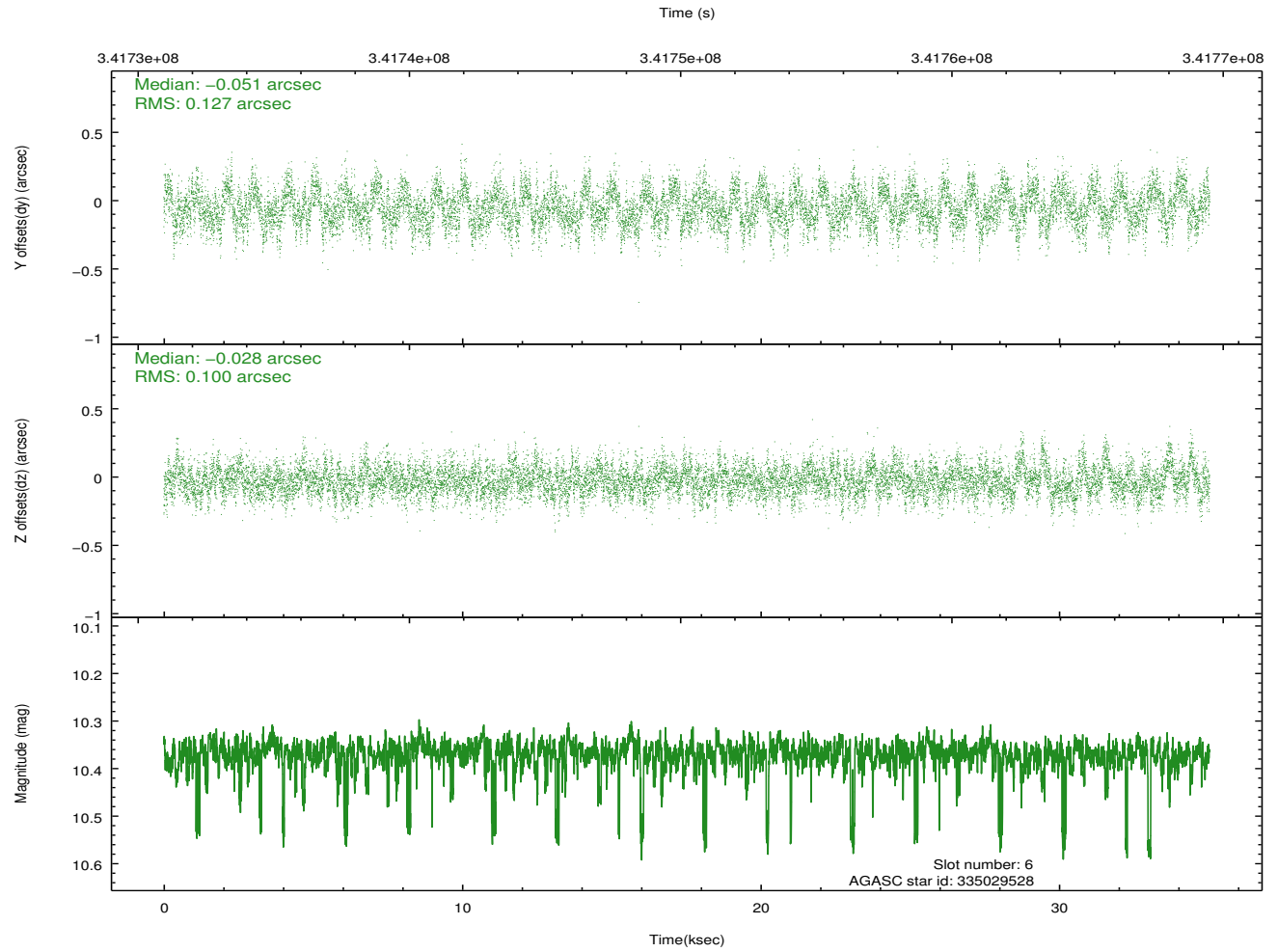
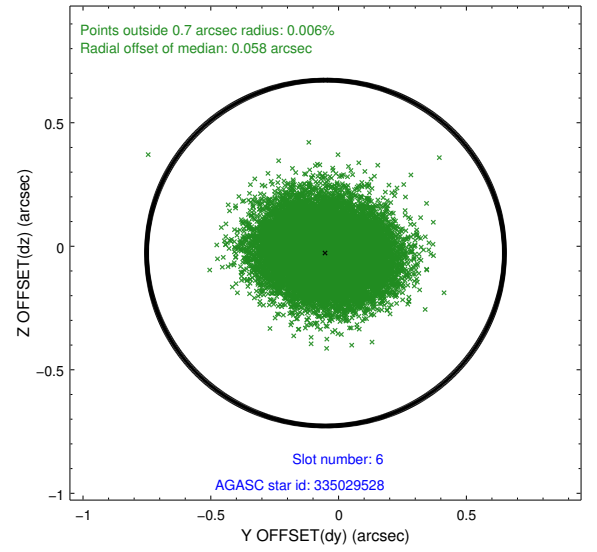
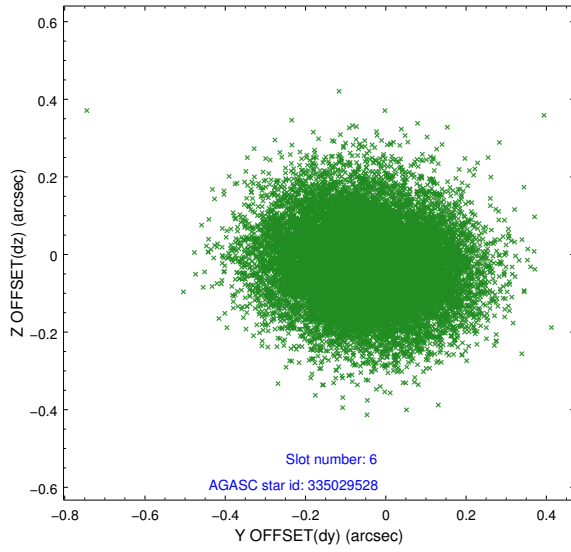




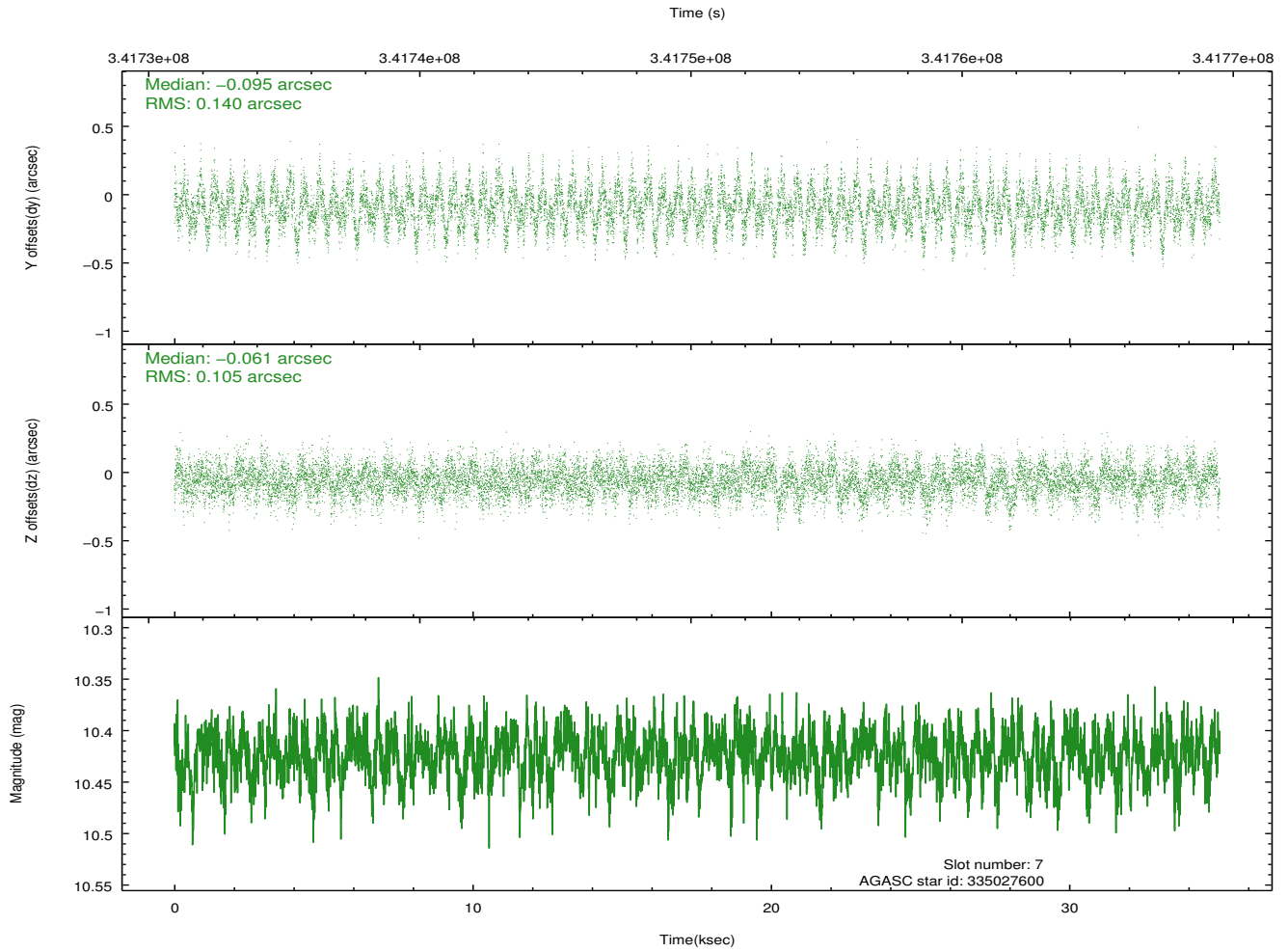
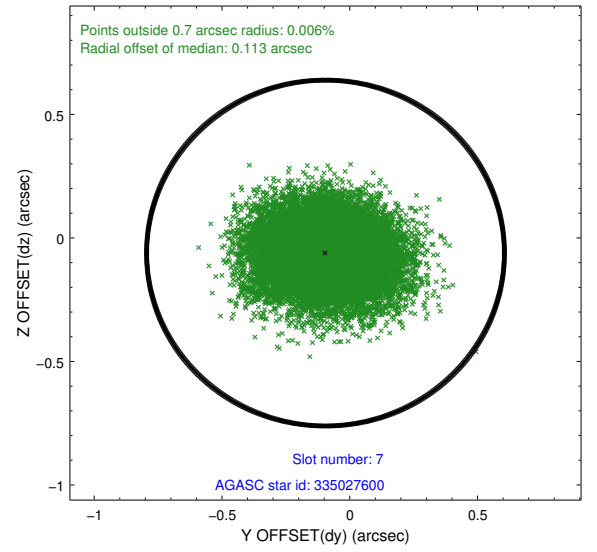
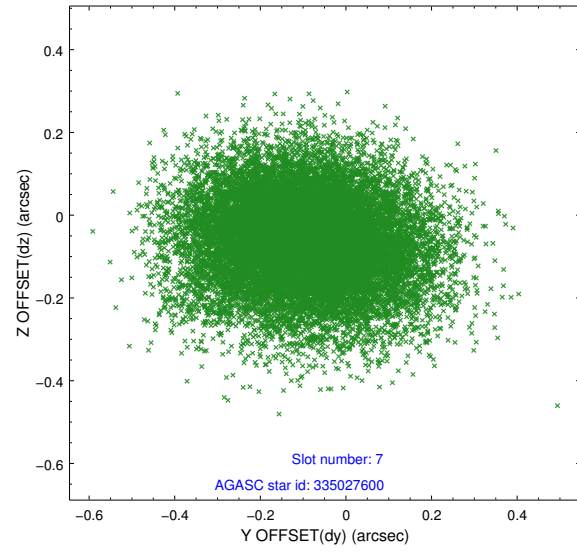
### 2.4.3 Slot 5



## 2.4.4 Slot 6

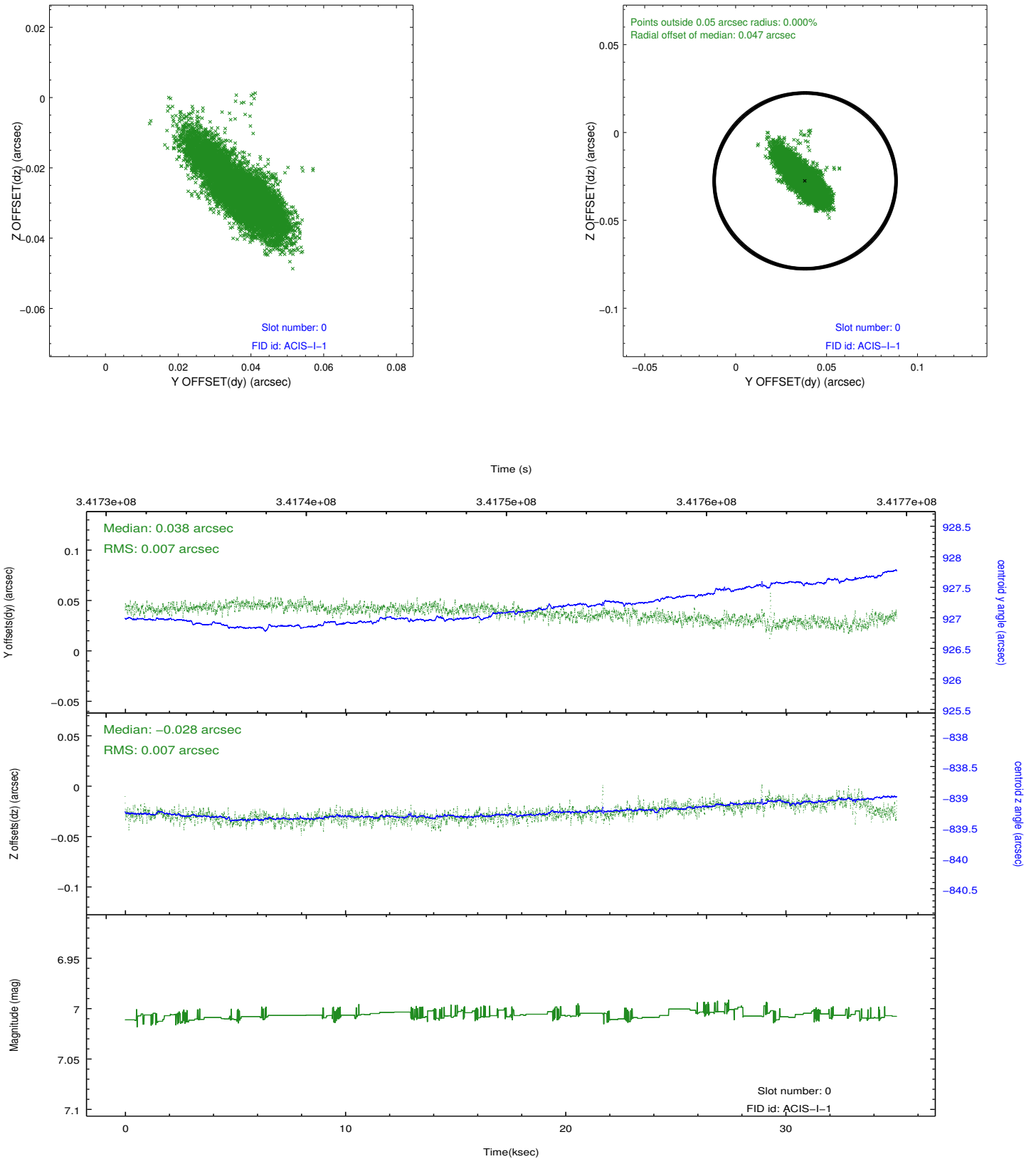


## 2.4.5 Slot 7

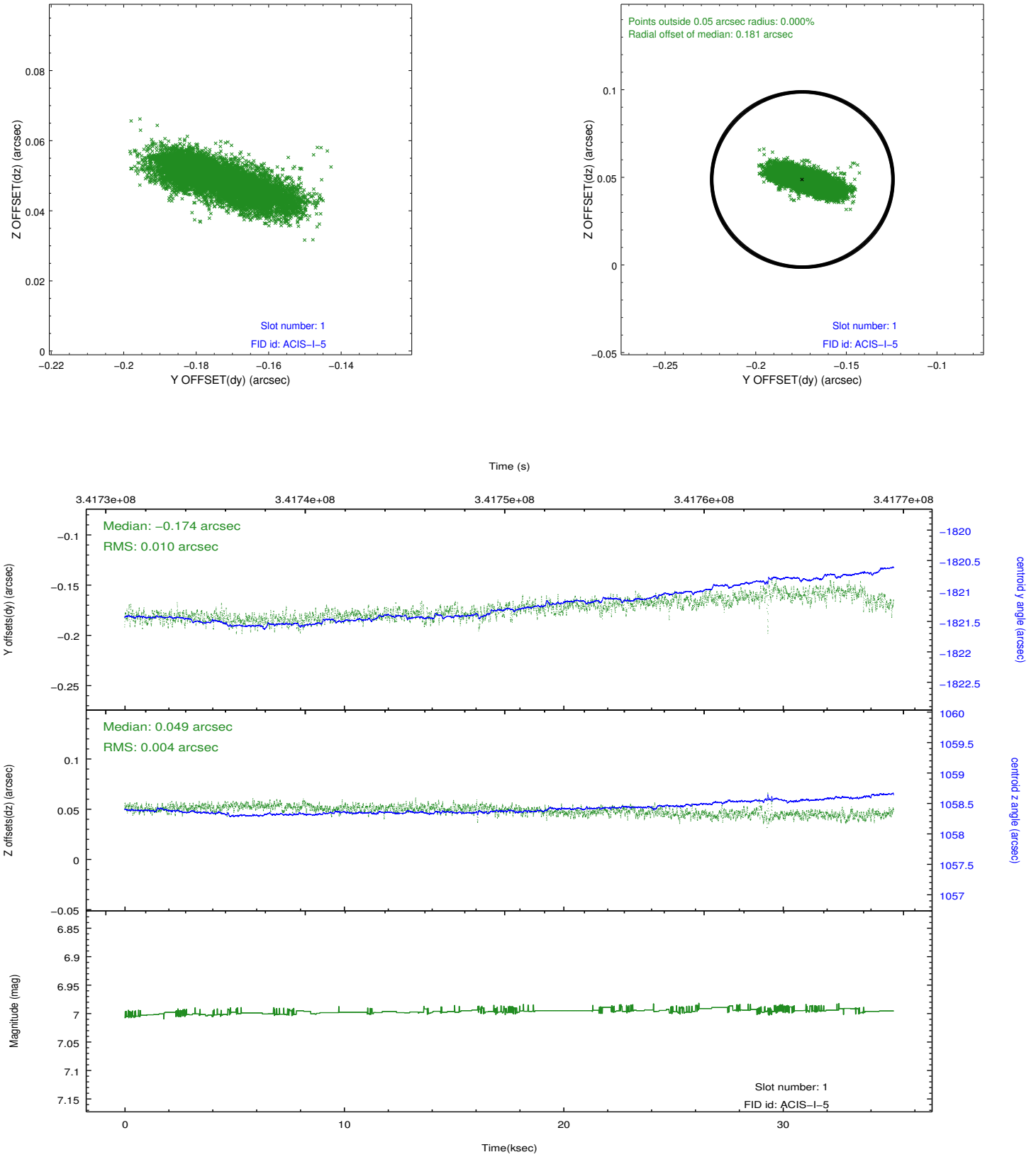


## 2.5 FID Slots

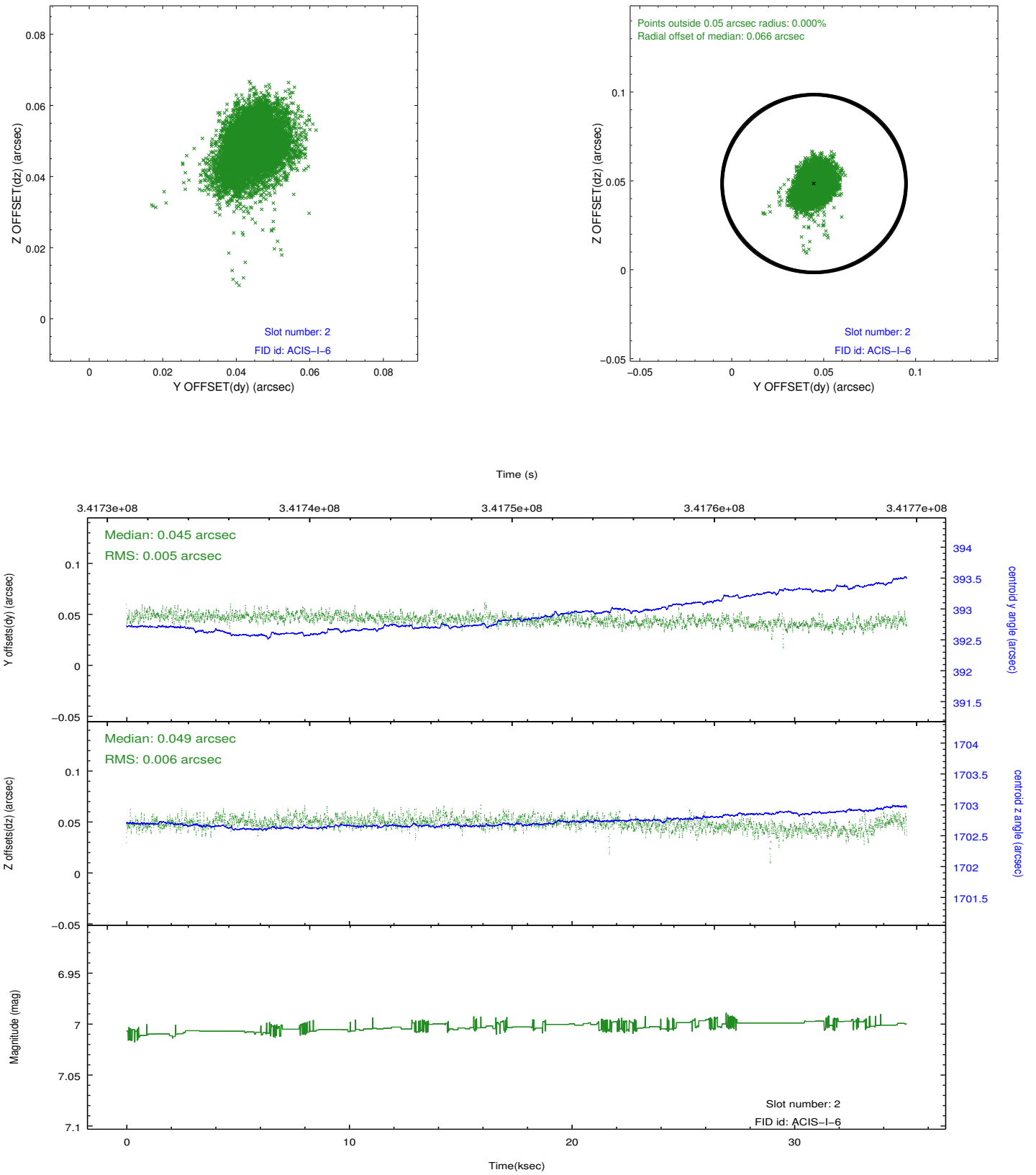
### 2.5.1 Slot 0



## 2.5.2 Slot 1



### 2.5.3 Slot 2



## A Summary

### A.1 Status

V&V Scientist	Jen Lauer
V&V Date (YYYY-MM-DD)	2012.06.01
V&V Edition	1
V&V Disposition and Status	OK
V&V Charge Time	35.0329773

### A.2 Comments