

V&V Reference Report

L2 ASCDS Version : 8.4.5

Observation 10439 - L2 Version 2
Chandra X-Ray Center

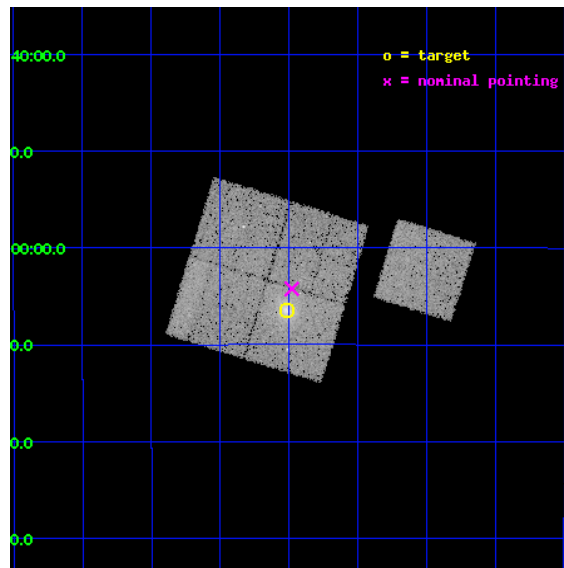
L2 Processing Date : Jun 9 2012

Contents

1	Front	2
2	OBI	3
2.1	OBI	3
2.1.1	Images	3
2.1.2	Bias	3
2.1.3	Parameters	4
2.1.4	Events	4
2.2	Compared Parameters	5
2.3	Aspect	6
2.4	Star Slots	9
2.4.1	Slot 3	9
2.4.2	Slot 4	10
2.4.3	Slot 5	11
2.4.4	Slot 6	12
2.4.5	Slot 7	13
2.5	FID Slots	14
2.5.1	Slot 0	14
2.5.2	Slot 1	15
2.5.3	Slot 2	16
A	Summary	17
A.1	Status	17
A.2	Comments	17

1 Front

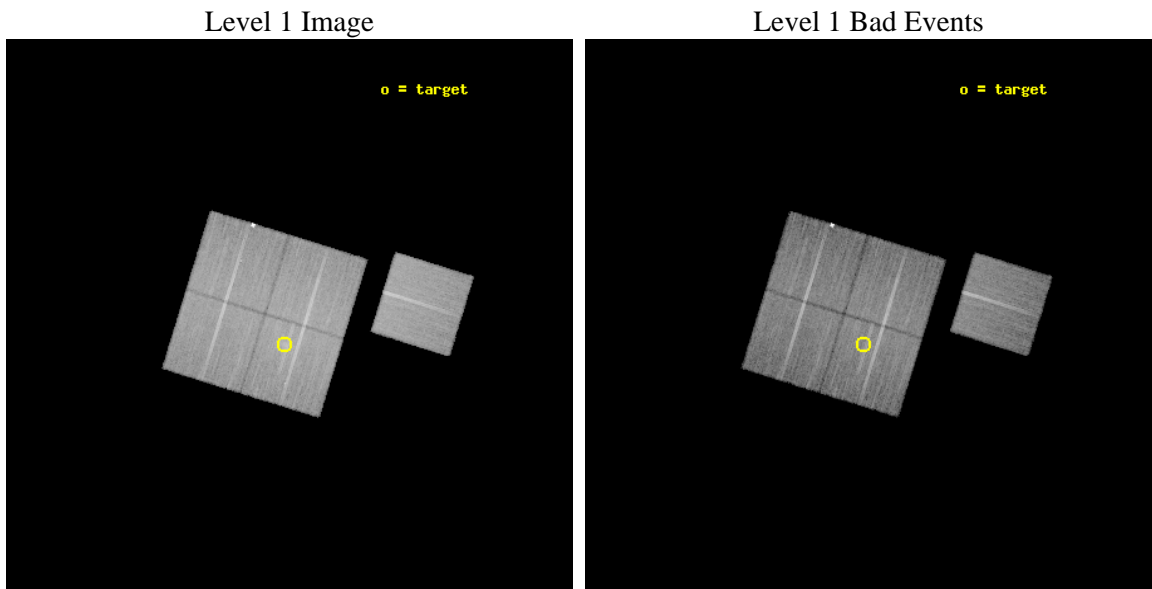
seq_num	800800	Sequence number
obs_id	10439	Observation id
title	LoCuSS: An Unbiased Multi-wavelength Study of the Cluster Quadchotomy - Gas Cooling and Cluster Merging at z=0.2	Proposal title
observer	Dr Graham Smith	Principal investigator
object	ABELL 2485	Source name
dtcycle	0	
cycle	P	events from which exps? Prim/Second/Both
ra_targ	342.129583	Observer's specified target RA [deg]
dec_targ	-16.107111	Observer's specified target Dec [deg]
ra_nom	342.11983728318	Nominal RA [deg]
dec_nom	-16.070539698775	Nominal Dec [deg]
roll_nom	107.18782274883	Nominal Roll [deg]
revision	2	Processing version of data
ontime	20030.679570615	Sum of GTIs [s]
livetime	19768.963995653	Livetime [s]
ontime0	20024.274440169	Sum of GTIs [s]
ontime1	20033.738490999	Sum of GTIs [s]
ontime2	20036.920521438	Sum of GTIs [s]
ontime3	20030.679570615	Sum of GTIs [s]
ontime6	20039.938401699	Sum of GTIs [s]
l2events	82296	Number of level 2 events



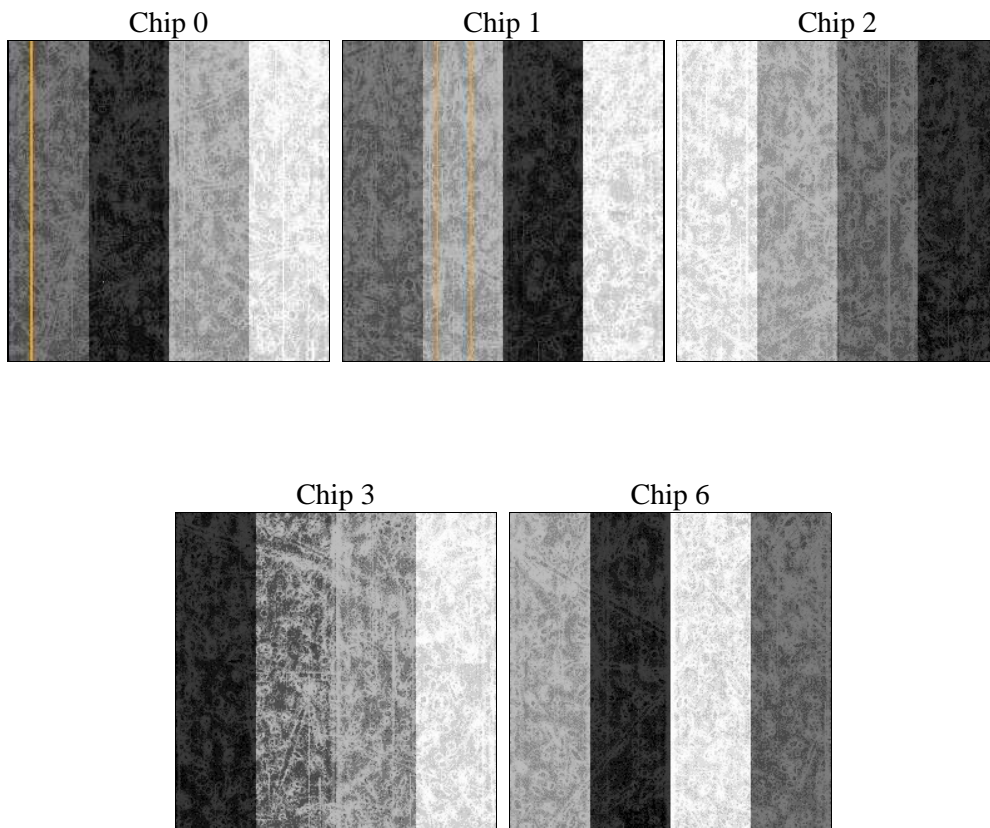
2 OBI

2.1 OBI

2.1.1 Images



2.1.2 Bias



2.1.3 Parameters

obi_num	0	Obi number	sched_exp_time	20000.000000	[s] Scheduled observation exposure time
ascdsver	8.4.5	Processing system revision	ontime	20030.679570615	Sum of GTIs [s]
caldsver	4.4.10	 	ontime0	20024.274440169	Sum of GTIs [s]
date	2012-06-09T22:01:48	Date and time of file creation	ontime1	20033.738490999	Sum of GTIs [s]
revision	2	Processing version of data	ontime2	20036.920521438	Sum of GTIs [s]
			ontime3	20030.679570615	Sum of GTIs [s]
			ontime6	20039.938401699	Sum of GTIs [s]
			l1events	891781	Number of level 1 events

2.1.4 Events

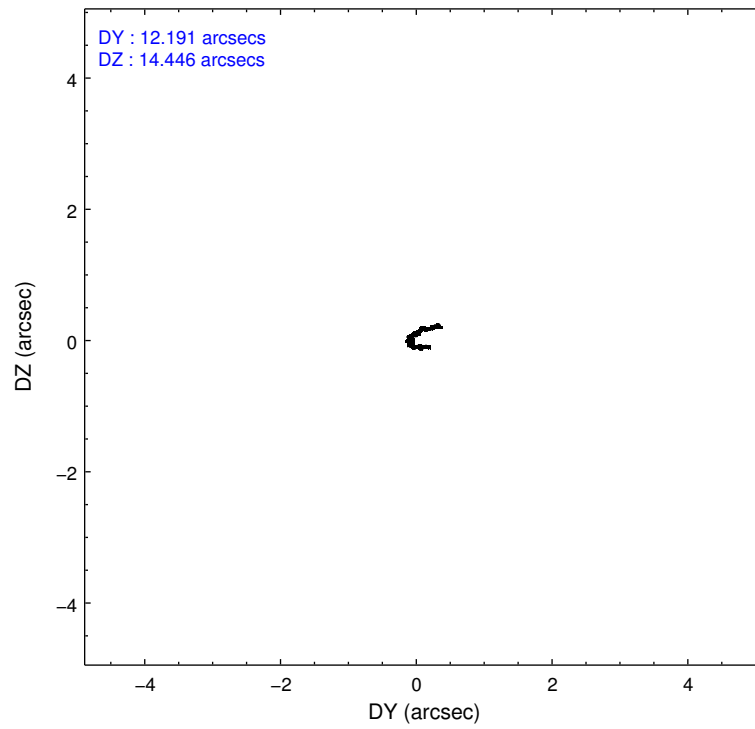
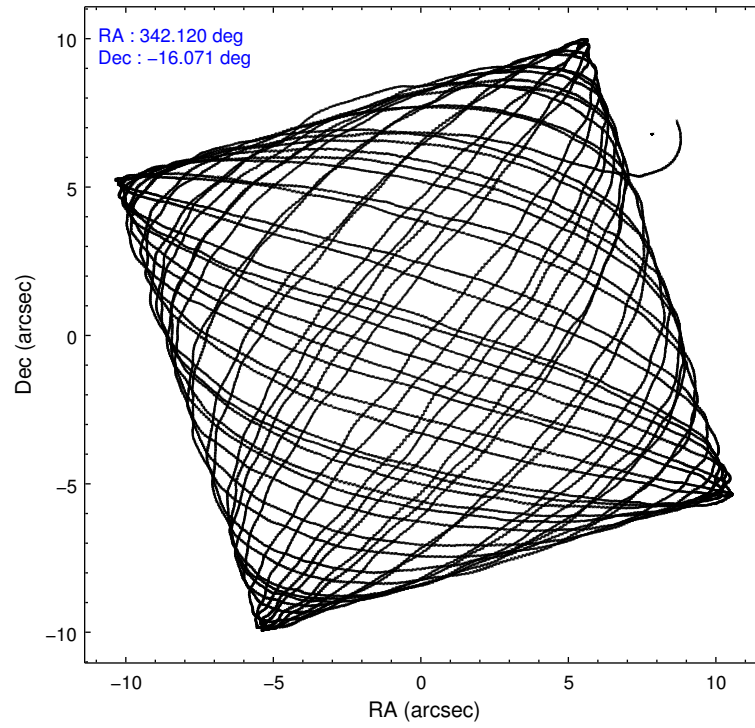
	ccd 0	ccd 1	ccd 2	ccd 3	ccd 6
level 1 events	172625	166077	185169	186533	181377
rejected events	153093	146055	167135	163536	163070
rejected %	88%	87%	90%	87%	89%

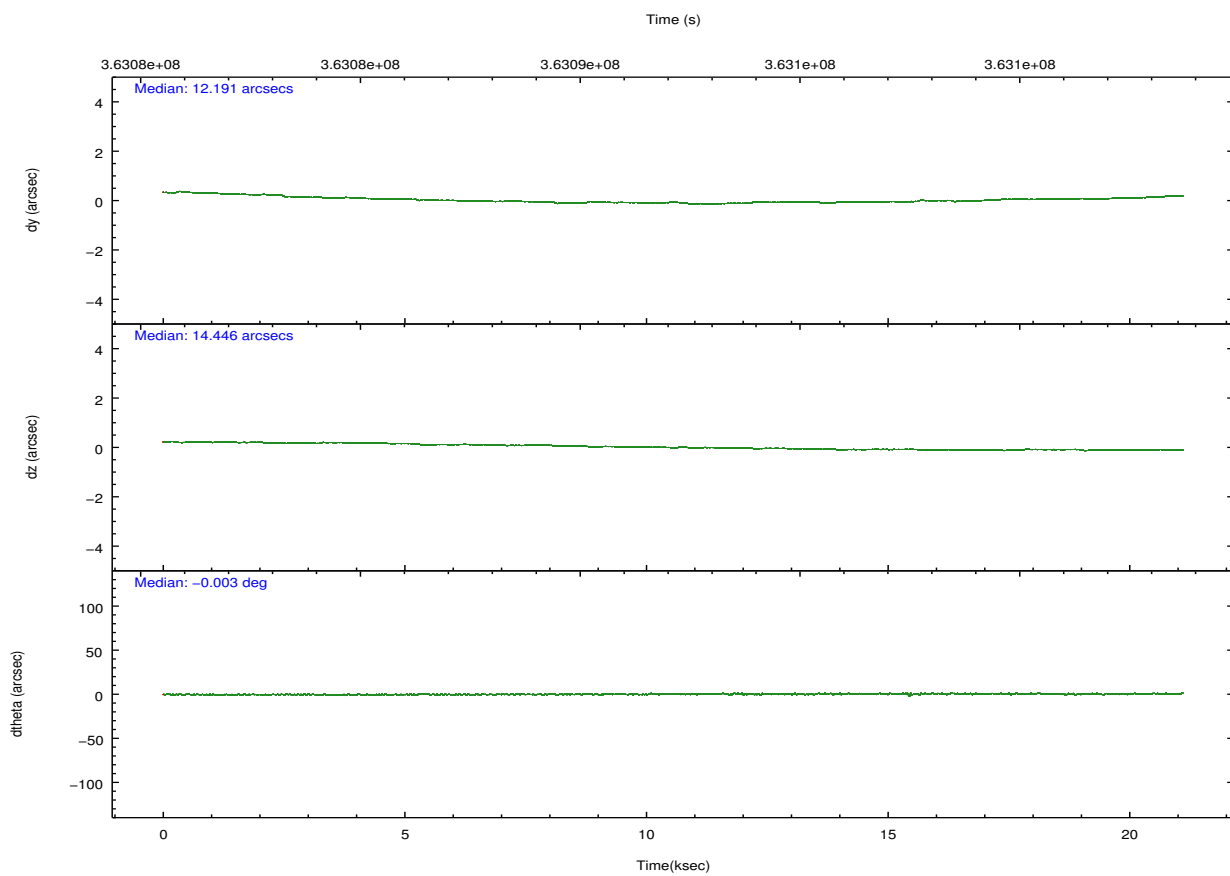
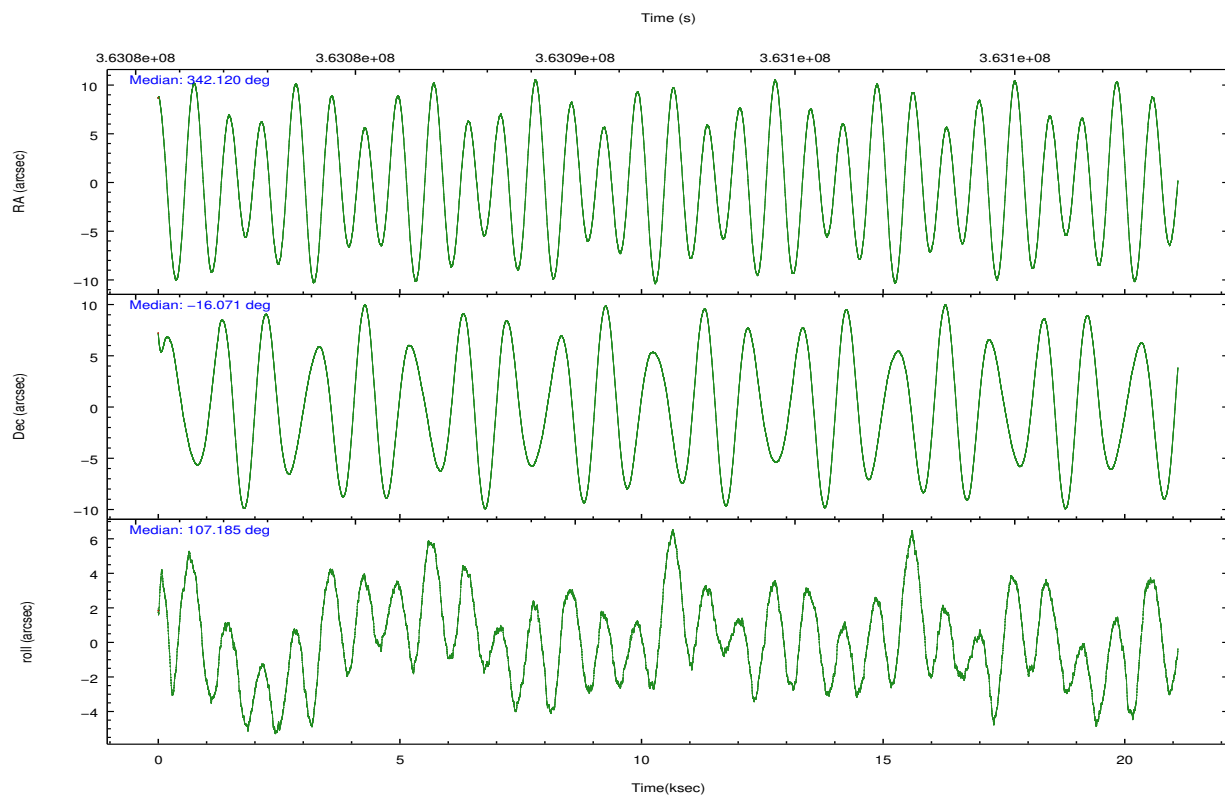
	ccd 0	ccd 1	ccd 2	ccd 3	ccd 6
grade 0 events	6357	7202	6557	10864	6354
	3%	4%	3%	5%	3%
grade 1 events	99	93	110	134	89
	0%	0%	0%	0%	0%
grade 2 events	4487	4560	4364	4291	4047
	2%	2%	2%	2%	2%
grade 3 events	2013	2069	1814	2124	1975
	1%	1%	0%	1%	1%
grade 4 events	1862	2066	1904	2076	1935
	1%	1%	1%	1%	1%
grade 5 events	11057	6913	6220	7275	7050
	6%	4%	3%	3%	3%
grade 6 events	4815	4131	3402	3650	4006
	2%	2%	1%	1%	2%
grade 7 events	141935	139043	160798	156119	155921
	82%	83%	86%	83%	85%

2.2 Compared Parameters

Parameter	Planned	Actual	Parameter	Planned	Actual
Instrument	ACIS	ACIS	Obspar format version number	7	7
Detector	ACIS-01236	ACIS-01236	Obspar file type	PREDICTED	ACTUAL
Grating	NONE	NONE	Obspar update status	NONE	UPDATED
Data mode	VFAINT	VFAINT	Number of optional ACIS chips dropped	0	0
Observation mode	POINTING	POINTING	On-chip summing requested	N	N
[deg] Pointing RA	342.140924	342.1198372831789	Subarray requested	NONE	NONE
[deg] Pointing Dec	-16.089143	-16.07053969877495	Alternating exposures requested	N	N
[deg] Pointing Roll	106.984983	107.1878227488264	[s] Primary exposure time	0.000000	3.1
[mm] SIM focus pos	-0.782348	-0.7809083437167272			
[mm] SIM defocus	0	0.001439871863259334			
[mm] SIM translation stage pos	-227.592463	-227.5933067819097			
[mm] SIM translation stage offset	-6	-5.999146221020027			
[s] Observation start time (MET)	363082668.184000	363080778.46452			
Observation start date	2009-07-04T08:16:42	2009-07-04T07:46:18			
[s] Observation end time (MET)	363102668.184000	363103316.16565			
Observation end date	2009-07-04T13:50:02	2009-07-04T14:01:56			
Read mode	TIMED	TIMED			

2.3 Aspect



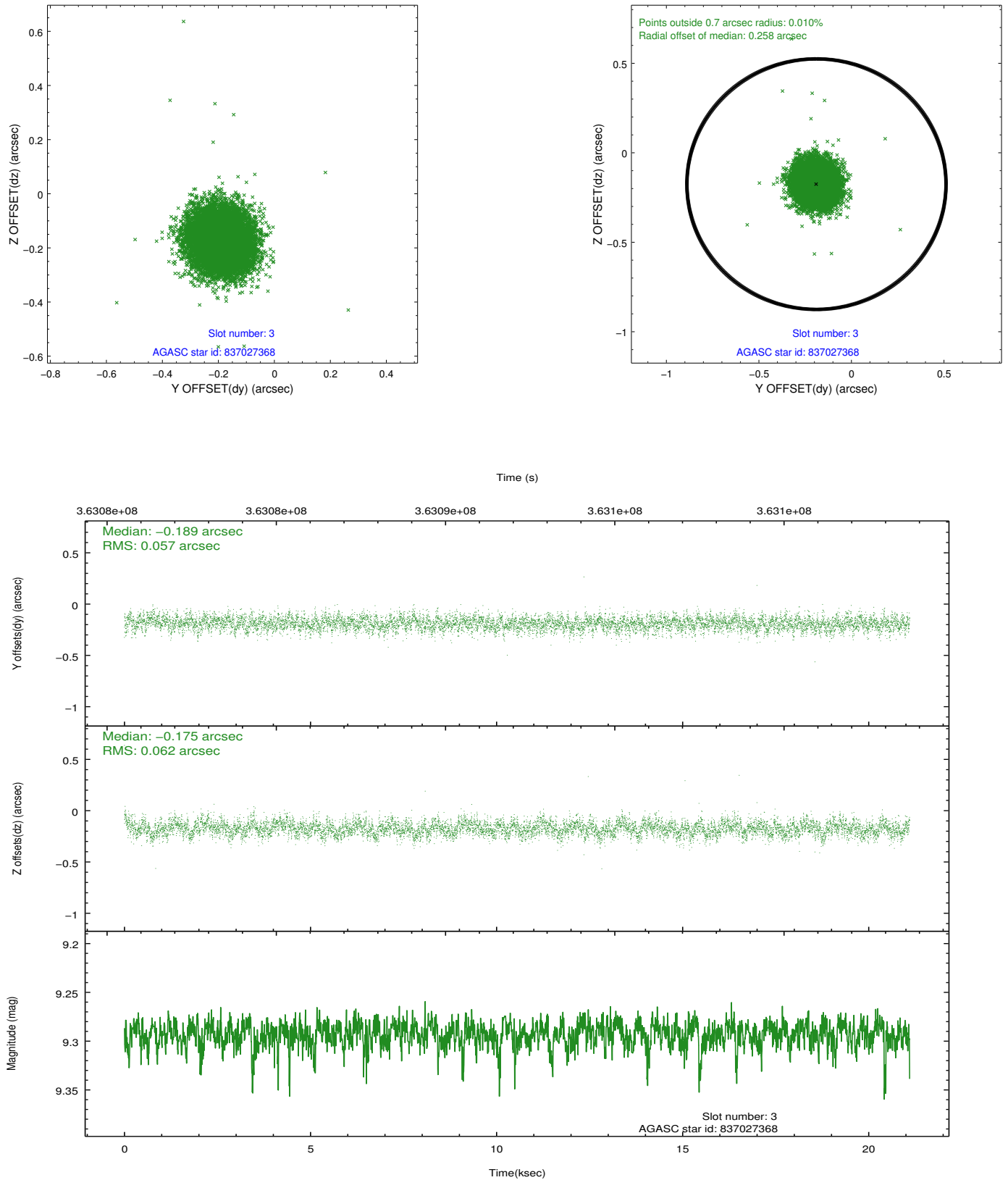


Slot Statistics

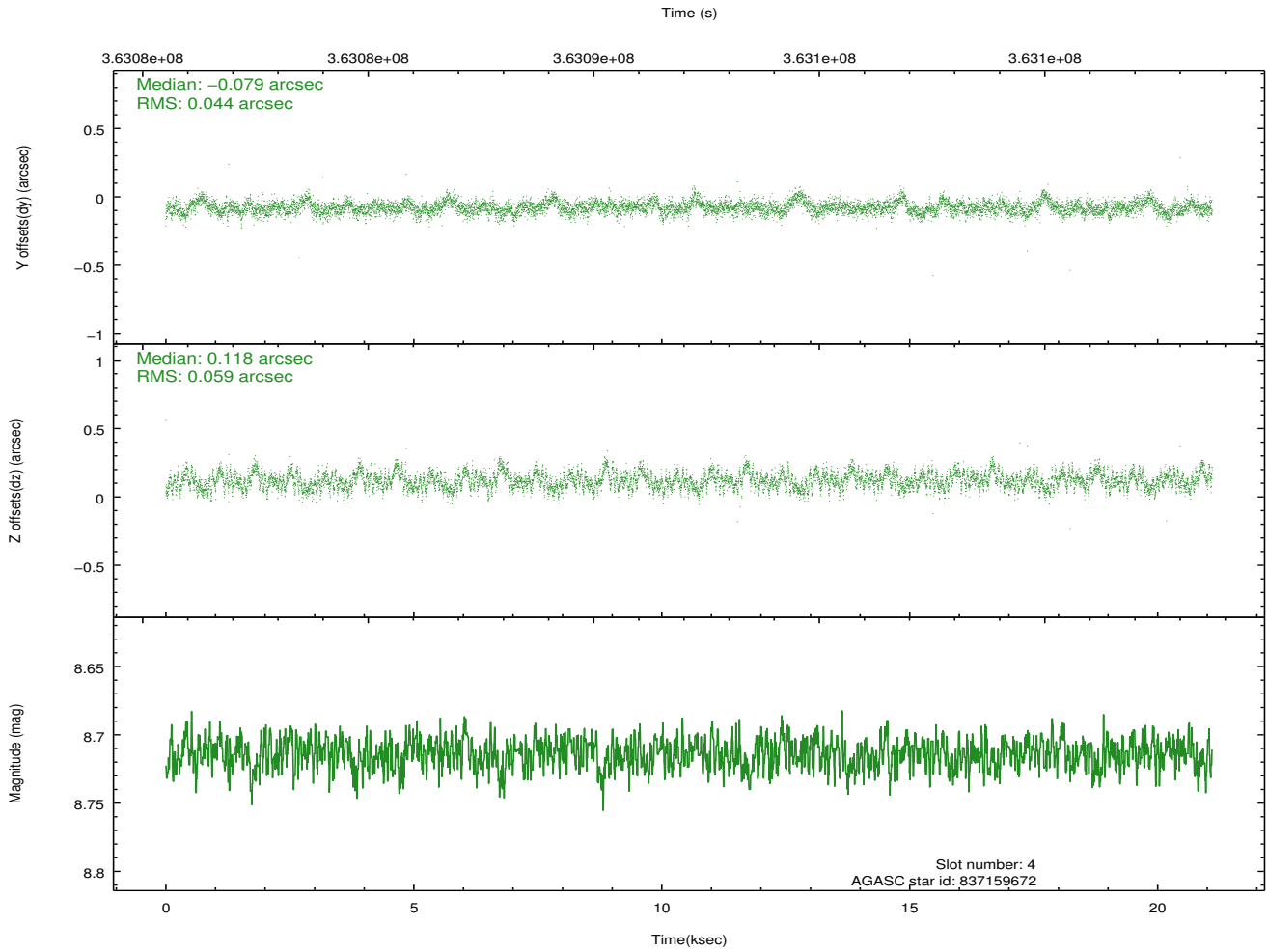
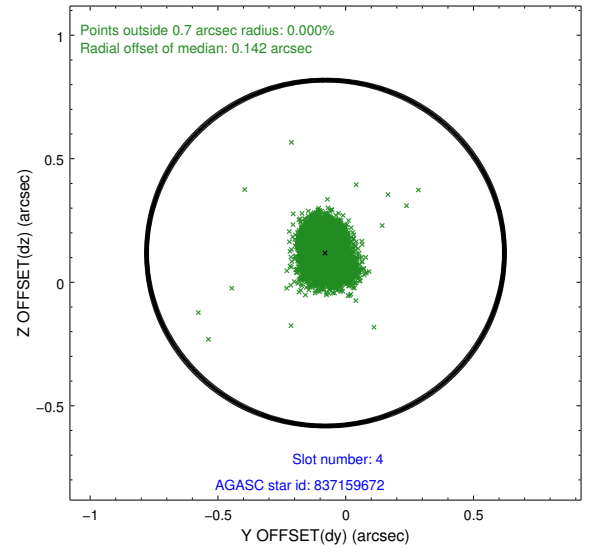
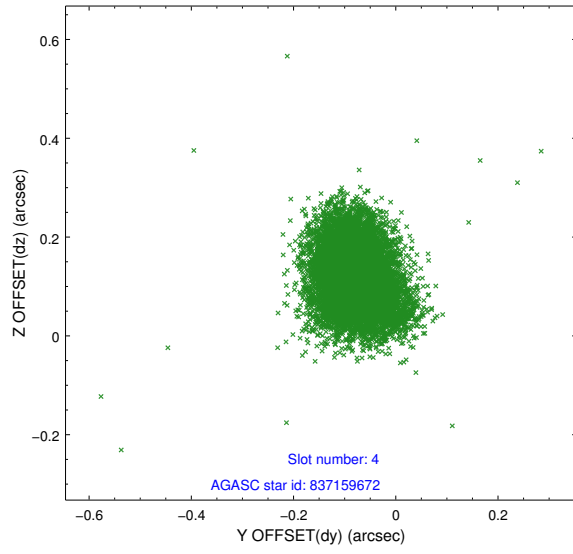
slot	status	id	mag	n_pts	med_dy	med_dz	dr1	dr2	ra	dec	mean_y	mean_z
0	FID	ACIS-I-1	7.05	5148	0.076	-0.019	0.007	0.012	0.000000	0.000000	927.29	-961.20
1	FID	ACIS-I-5	7.04	5148	-0.207	0.085	0.008	0.014	0.000000	0.000000	-1821.03	936.25
2	FID	ACIS-I-6	7.05	5148	0.039	0.004	0.009	0.017	0.000000	0.000000	392.58	1580.90
3	GUIDE	837027368	9.29	10287	-0.189	-0.175	0.089	0.143	341.330905	-15.720420	2084.15	2298.20
4	GUIDE	837159672	8.71	10289	-0.079	0.118	0.077	0.126	342.524257	-16.313800	-1161.24	-1029.54
5	GUIDE	837159792	9.87	10265	0.063	0.308	0.171	0.291	342.861574	-16.146258	-929.15	-2322.05
6	GUIDE	837165760	8.73	10291	0.019	-0.217	0.082	0.132	342.000147	-16.552719	-1454.33	951.58
7	GUIDE	837166696	10.07	10273	0.180	-0.044	0.147	0.237	342.163622	-16.592581	-1756.01	454.53

2.4 Star Slots

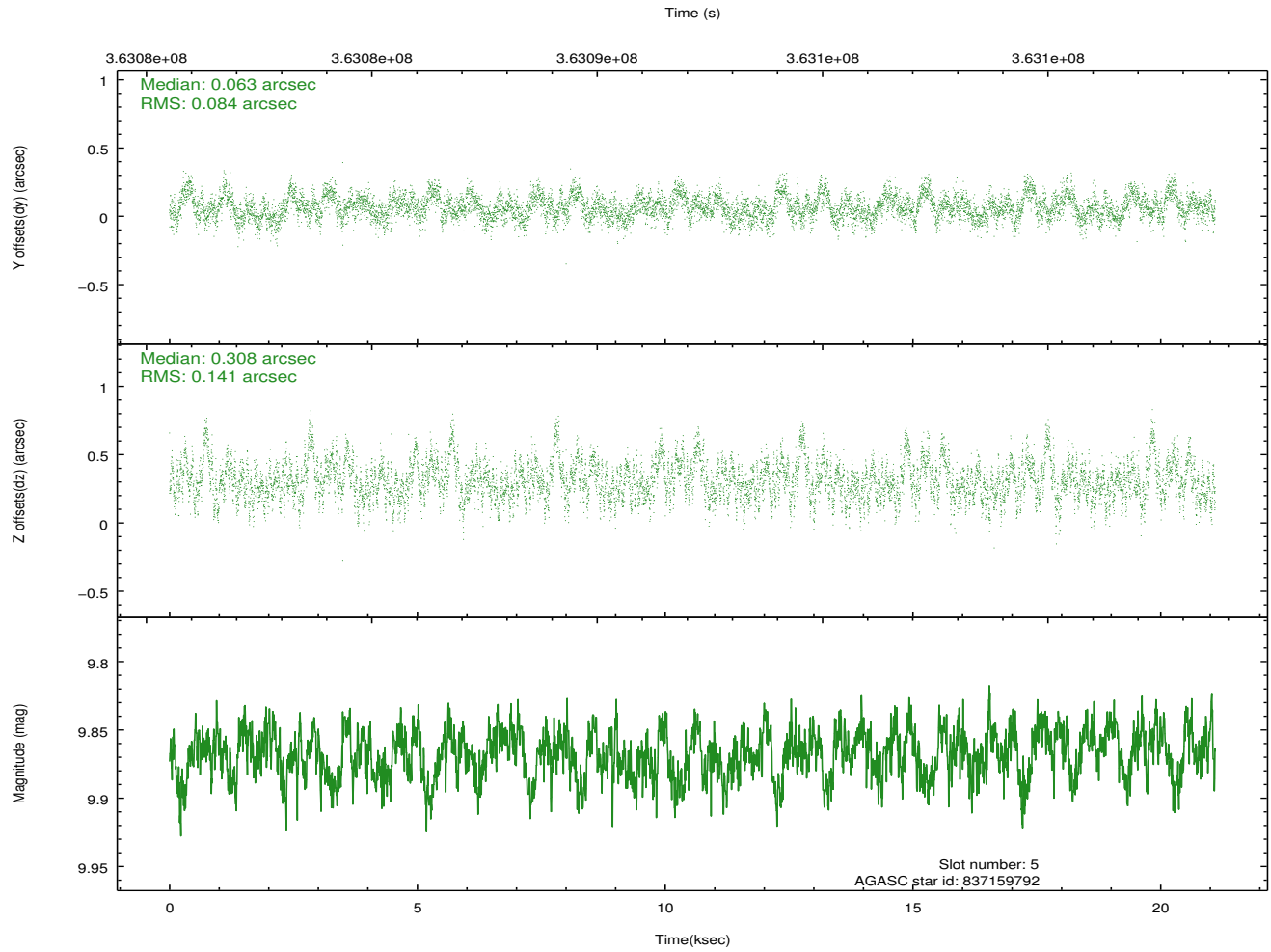
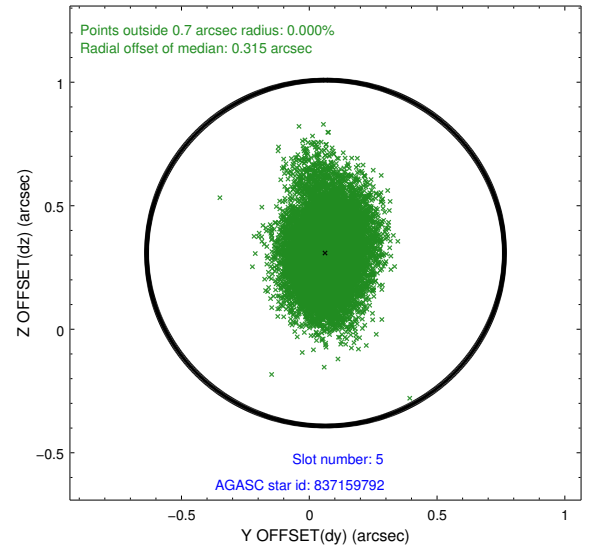
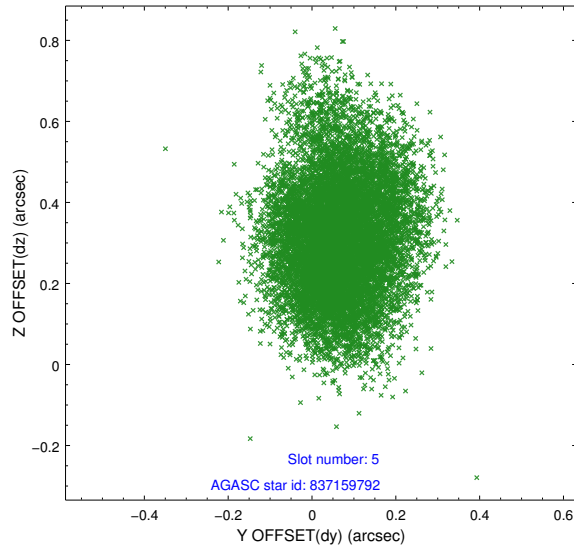
2.4.1 Slot 3



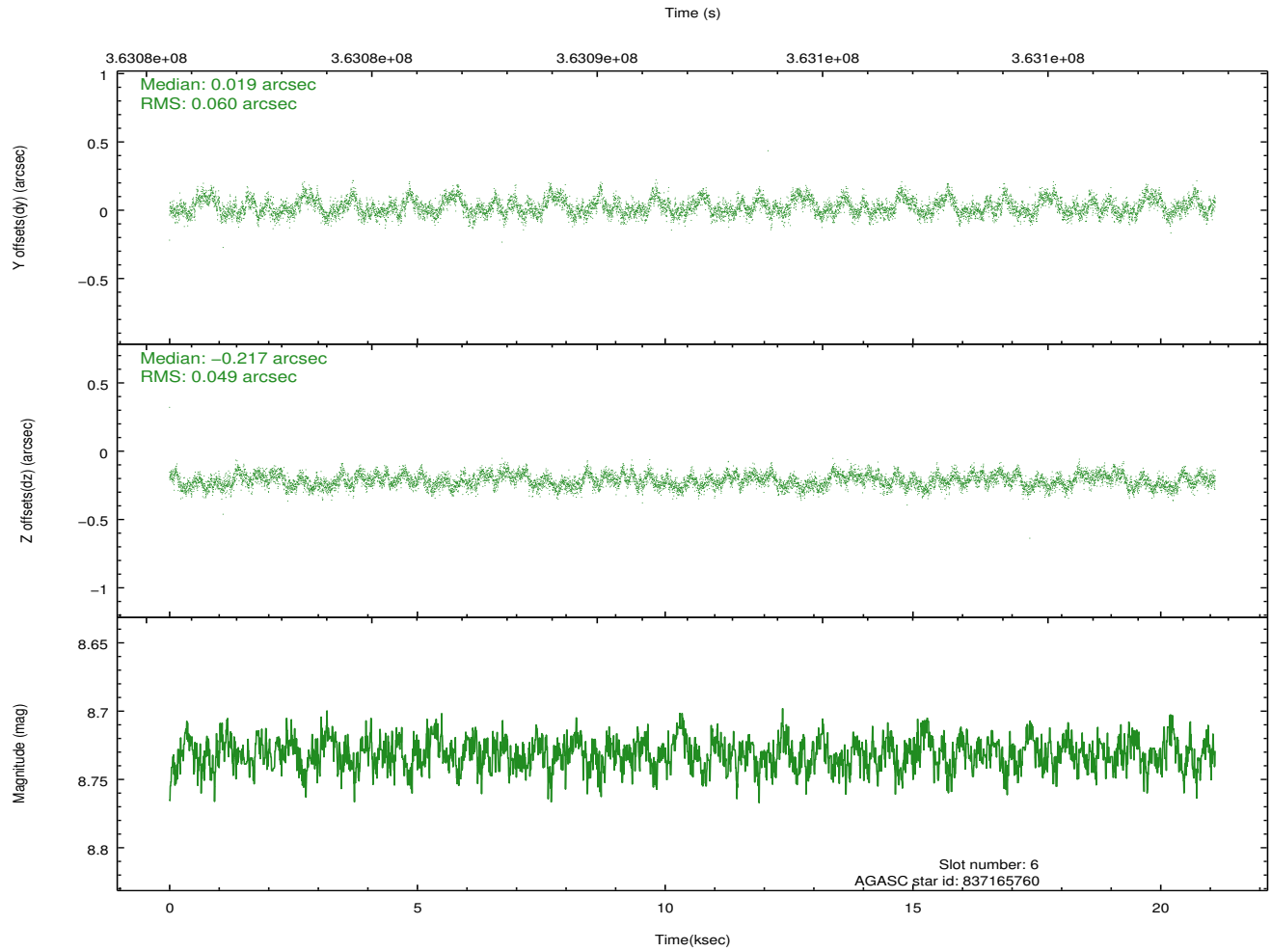
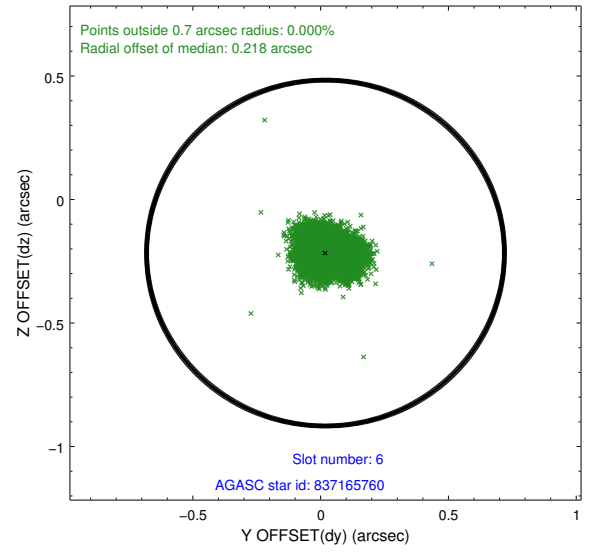
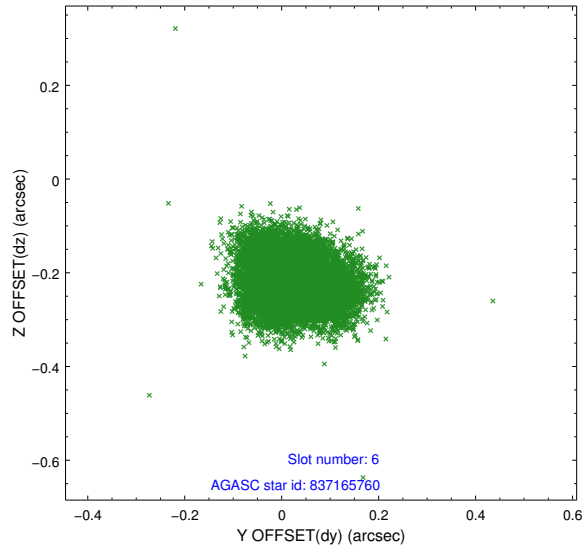
2.4.2 Slot 4



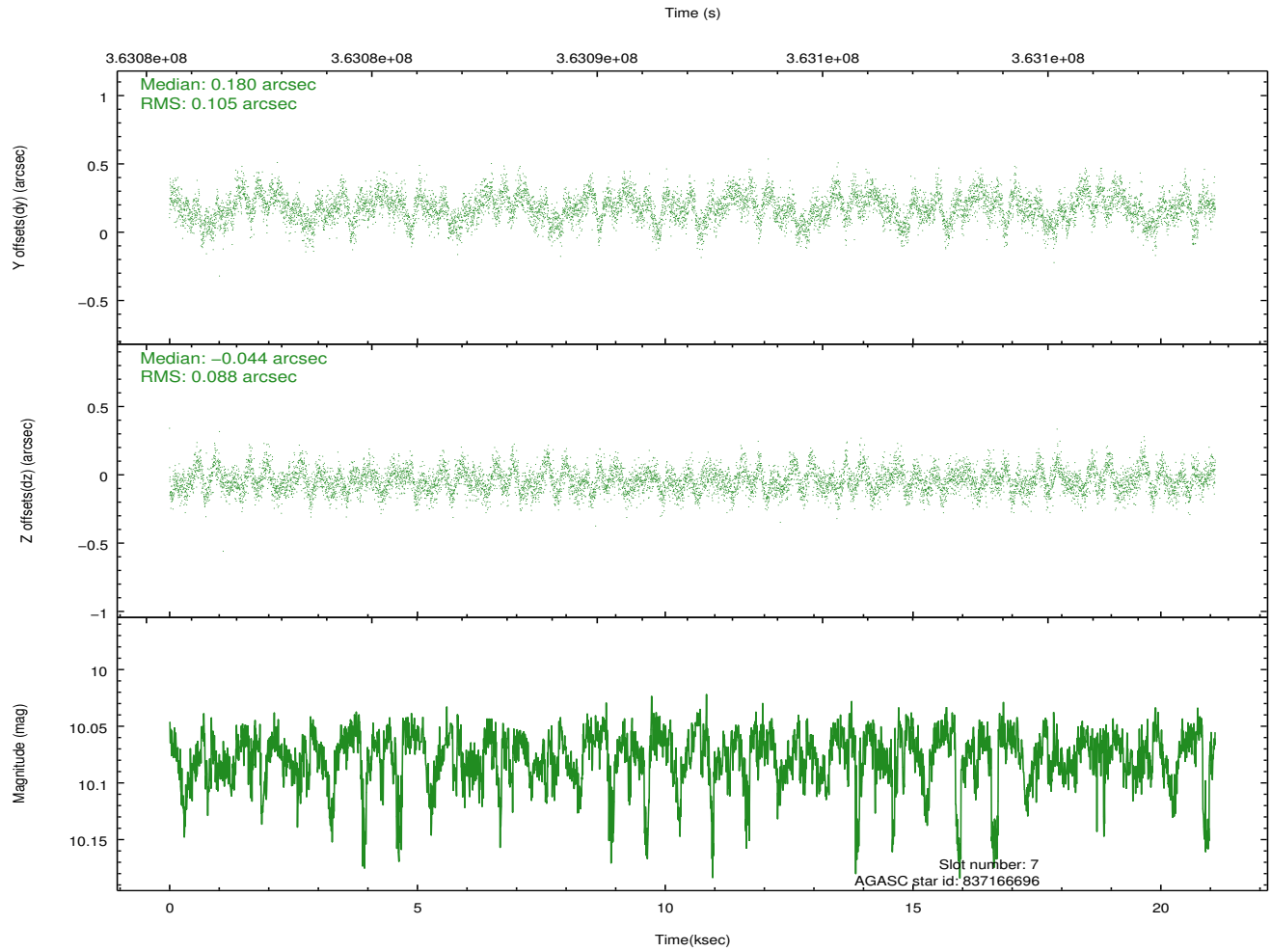
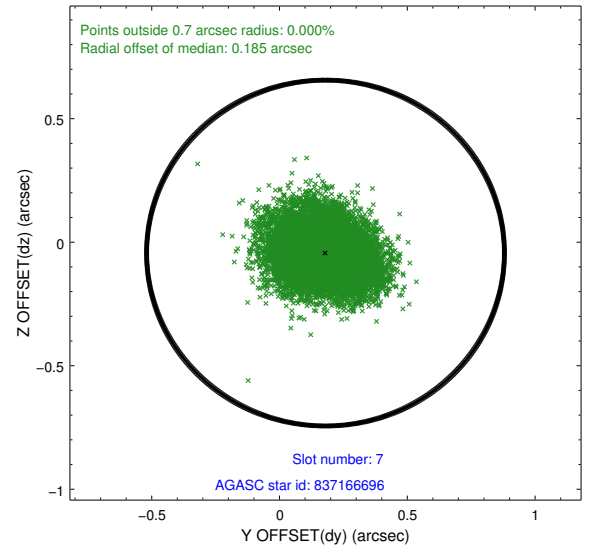
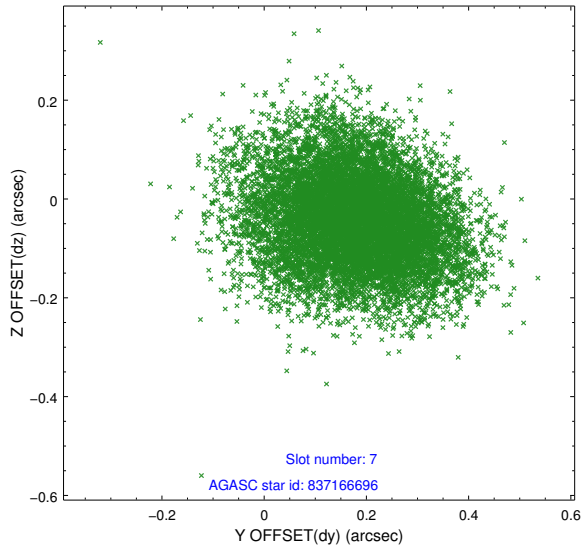
2.4.3 Slot 5



2.4.4 Slot 6

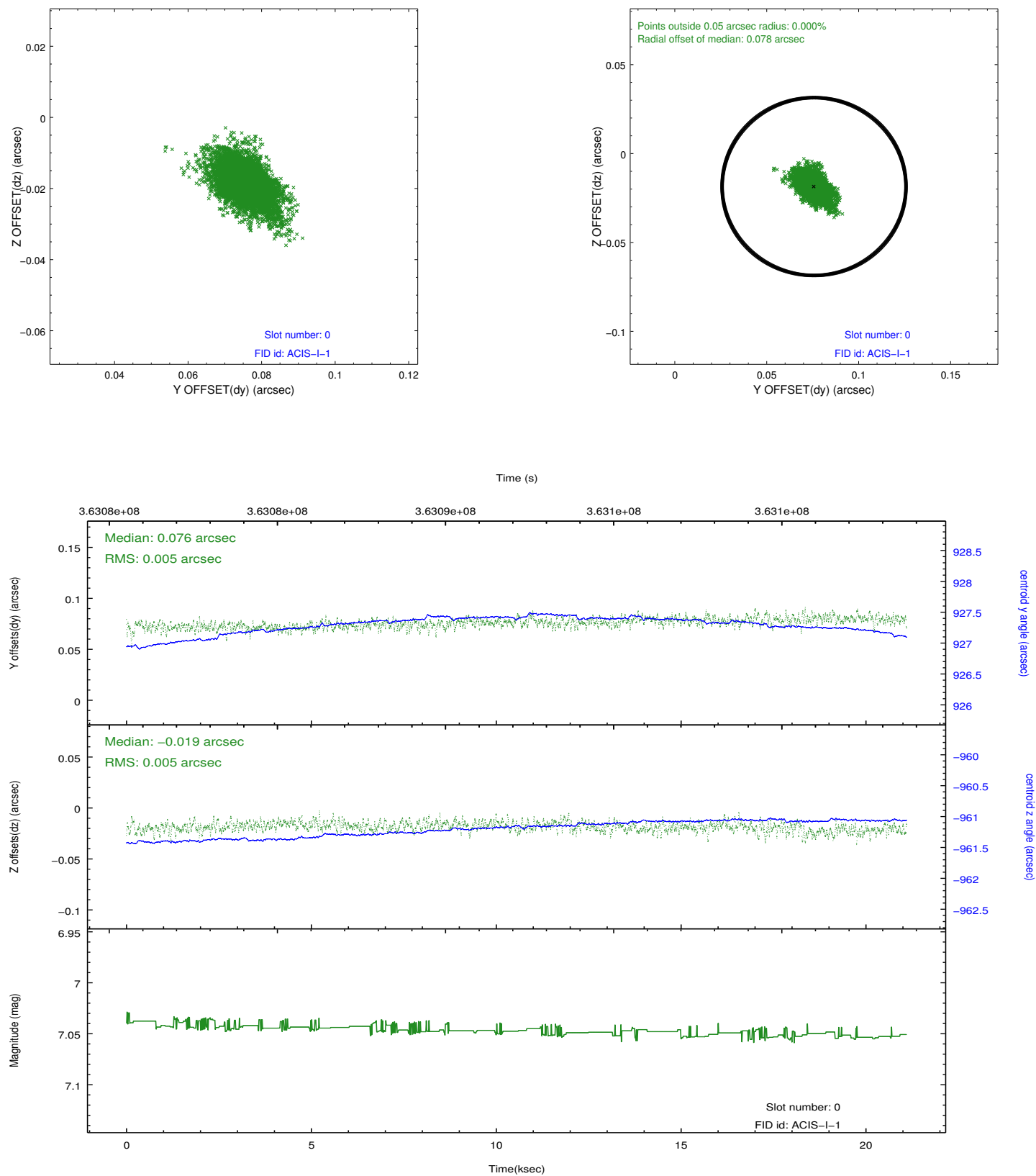


2.4.5 Slot 7

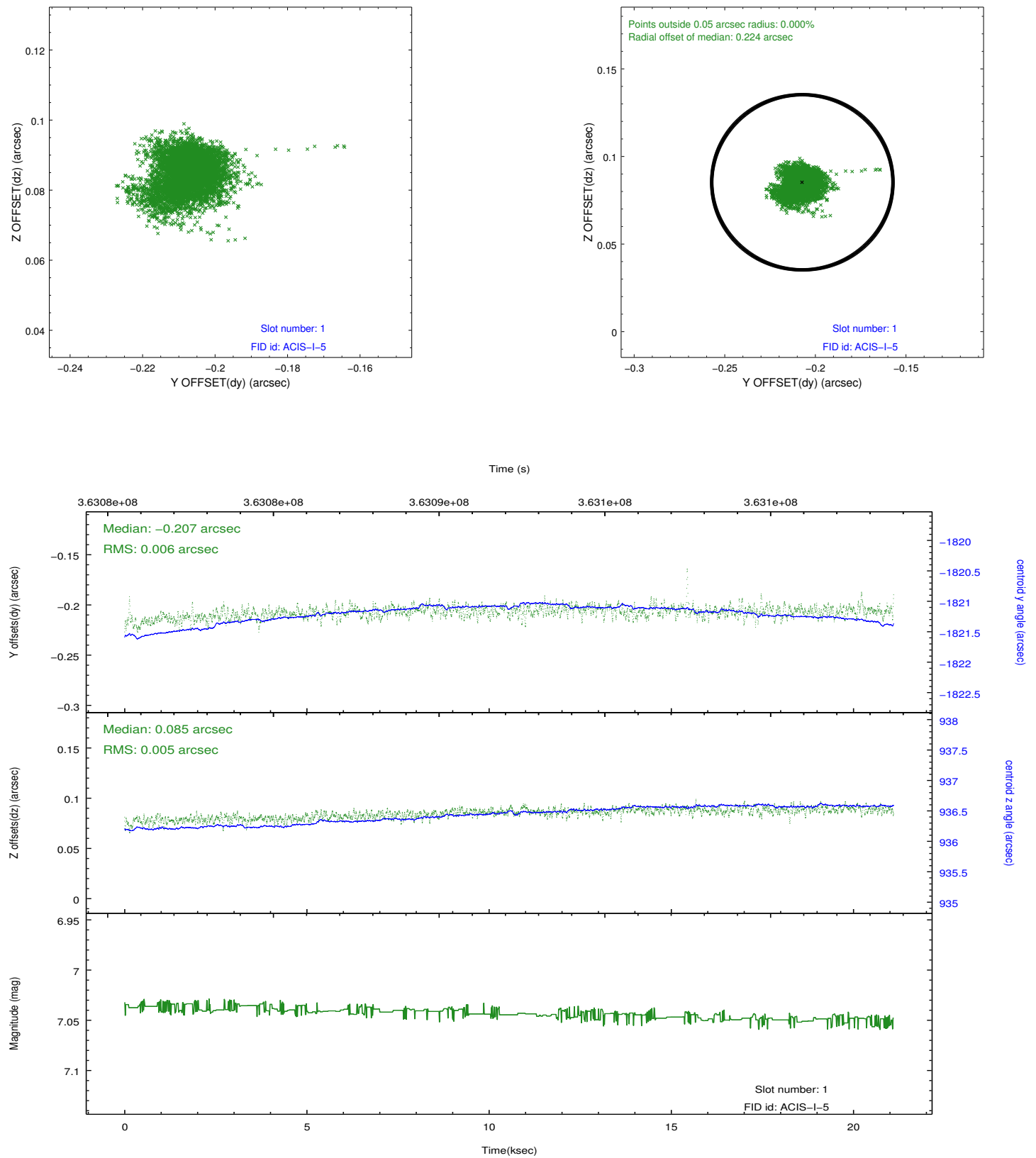


2.5 FID Slots

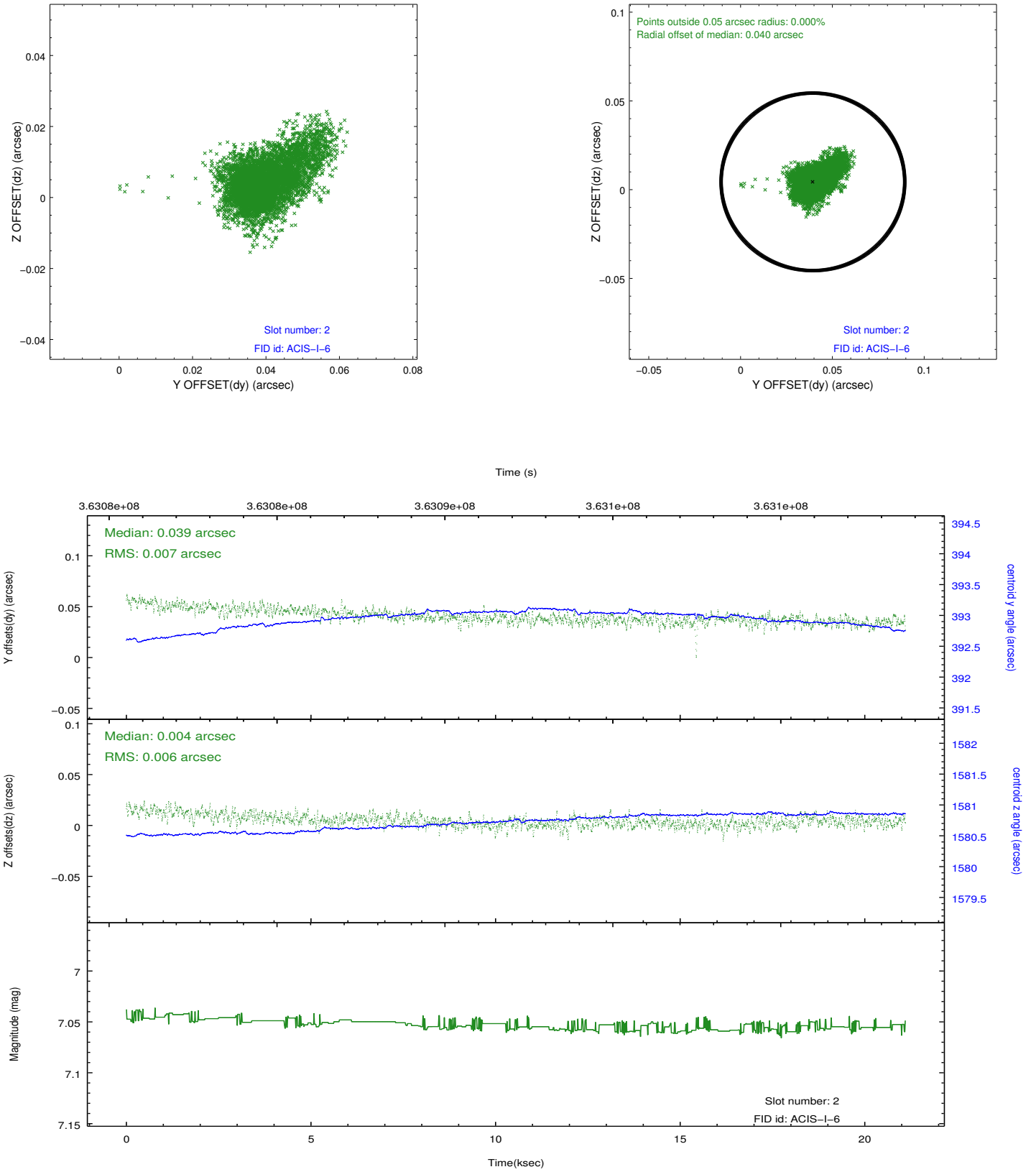
2.5.1 Slot 0



2.5.2 Slot 1



2.5.3 Slot 2



A Summary

A.1 Status

V&V Scientist	Jen Lauer
V&V Date (YYYY-MM-DD)	2012.06.13
V&V Edition	1
V&V Disposition and Status	OK
V&V Charge Time	20.0320771

A.2 Comments