

V&V Reference Report

L2 ASCDS Version : 8.4.4

Observation 10733 - L2 Version 2
Chandra X-Ray Center

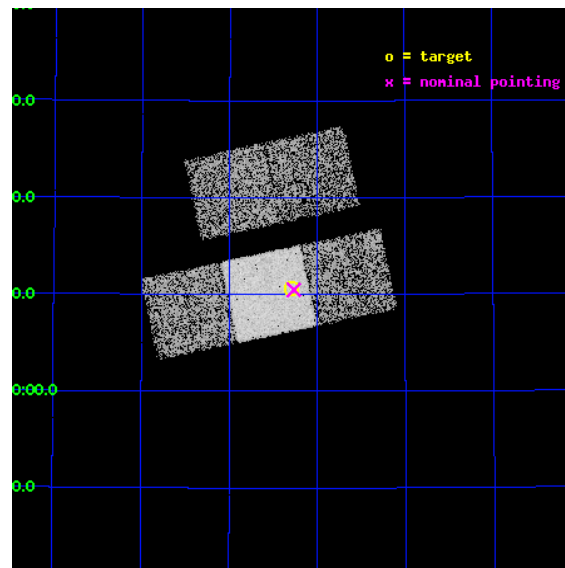
L2 Processing Date : May 28 2012

Contents

1	Front	2
2	OBI	3
2.1	OBI	3
2.1.1	Images	3
2.1.2	Bias	3
2.1.3	Parameters	4
2.1.4	Events	4
2.2	Compared Parameters	5
2.3	Aspect	6
2.4	Star Slots	9
2.4.1	Slot 3	9
2.4.2	Slot 4	10
2.4.3	Slot 5	11
2.4.4	Slot 6	12
2.4.5	Slot 7	13
2.5	FID Slots	14
2.5.1	Slot 0	14
2.5.2	Slot 1	15
2.5.3	Slot 2	16
A	Summary	17
A.1	Status	17
A.2	Comments	17

1 Front

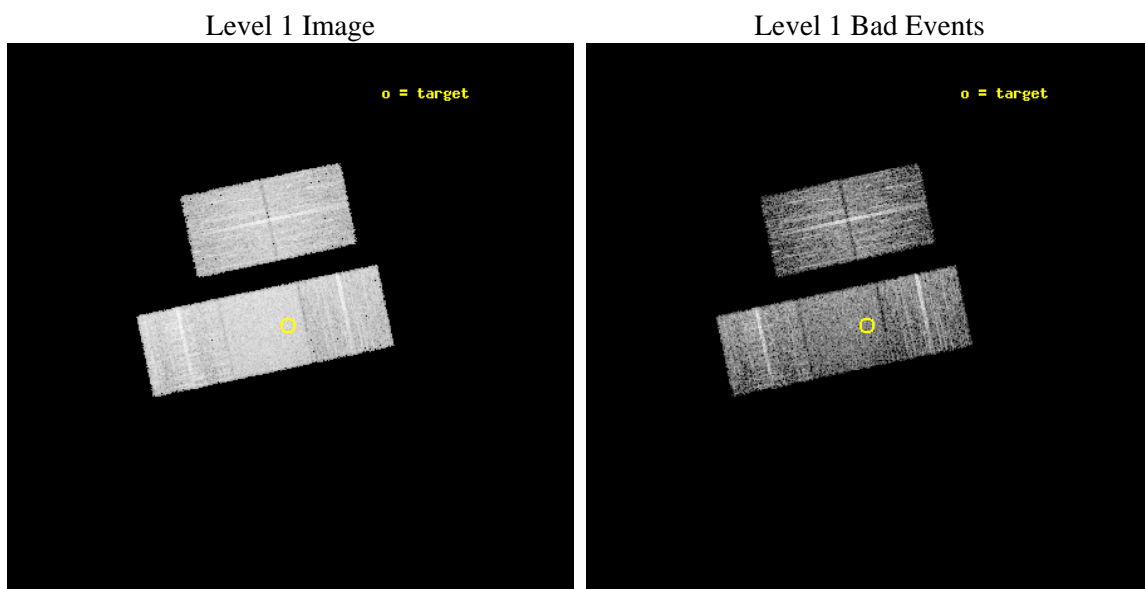
seq_num	701963	Sequence number
obs_id	10733	Observation id
title	A Chandra Snapshot Survey of Bright Mini-BAL Quasars	Proposal titl
observer	Professor Gordon Garmire	Principal investigator
object	SDSS J080117.79+521034.5	Source name
dtcycle	0	
cycle	P	events from which exps? Prim/Second/Both
ra_targ	120.324167	Observer's specified target RA [deg]
dec_targ	52.17625	Observer's specified target Dec [deg]
ra_nom	120.31659093254	Nominal RA [deg]
dec_nom	52.17455450691	Nominal Dec [deg]
roll_nom	168.03764829551	Nominal Roll [deg]
revision	2	Processing version of data
ontime	4144.7000318766	Sum of GTIs [s]
livetime	4090.5464746763	Livetime [s]
ontime2	4144.7000318766	Sum of GTIs [s]
ontime3	4144.7000318766	Sum of GTIs [s]
ontime6	4144.7000318766	Sum of GTIs [s]
ontime7	4144.7000318766	Sum of GTIs [s]
ontime8	4144.7000318766	Sum of GTIs [s]
l2events	42598	Number of level 2 events



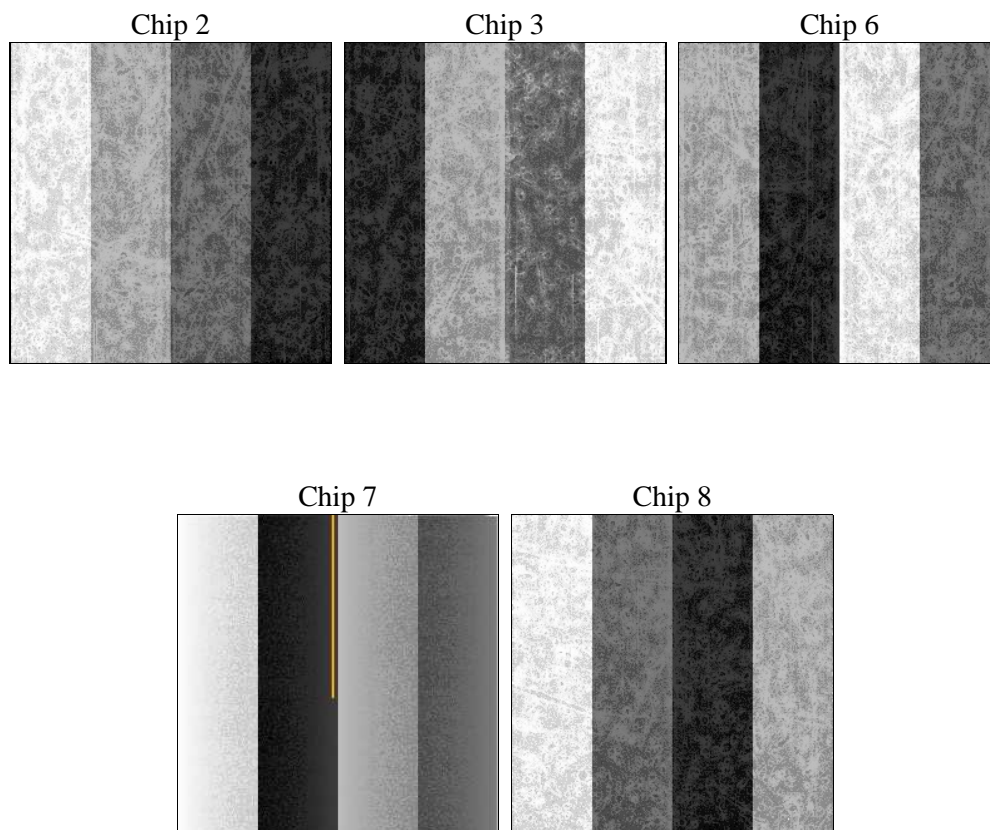
2 OBI

2.1 OBI

2.1.1 Images



2.1.2 Bias



2.1.3 Parameters

obi_num	0	Obi number	sched_exp_time	4000.000000	[s] Scheduled observation exposure time
ascdsver	8.4.4	Processing system revision	ontime	4144.7000318766	Sum of GTIs [s]
caldsver	4.4.9	 	ontime2	4144.7000318766	Sum of GTIs [s]
date	2012-05-29T01:05:44	Date and time of file creation	ontime3	4144.7000318766	Sum of GTIs [s]
revision	2	Processing version of data	ontime6	4144.7000318766	Sum of GTIs [s]
			ontime7	4144.7000318766	Sum of GTIs [s]
			ontime8	4144.7000318766	Sum of GTIs [s]
			l1events	265933	Number of level 1 events

2.1.4 Events

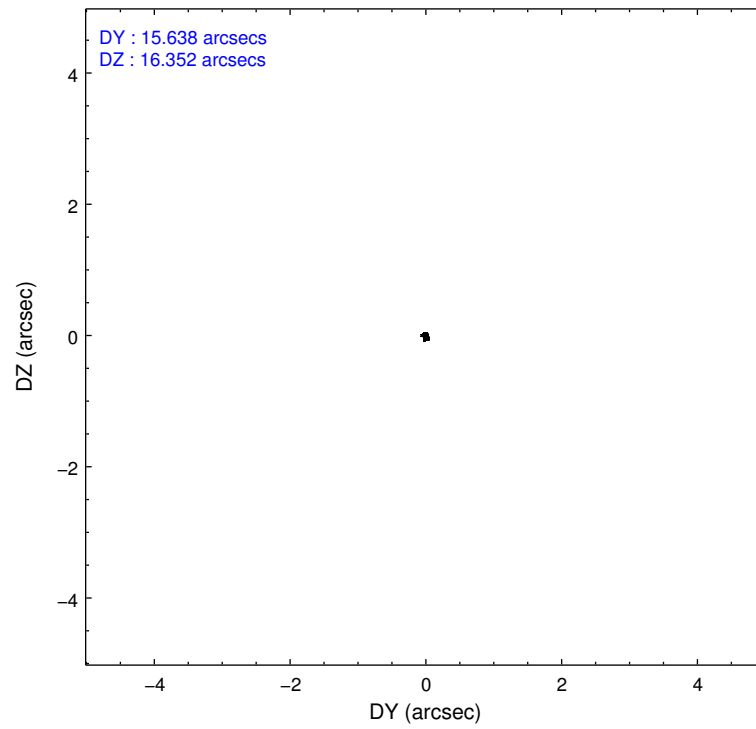
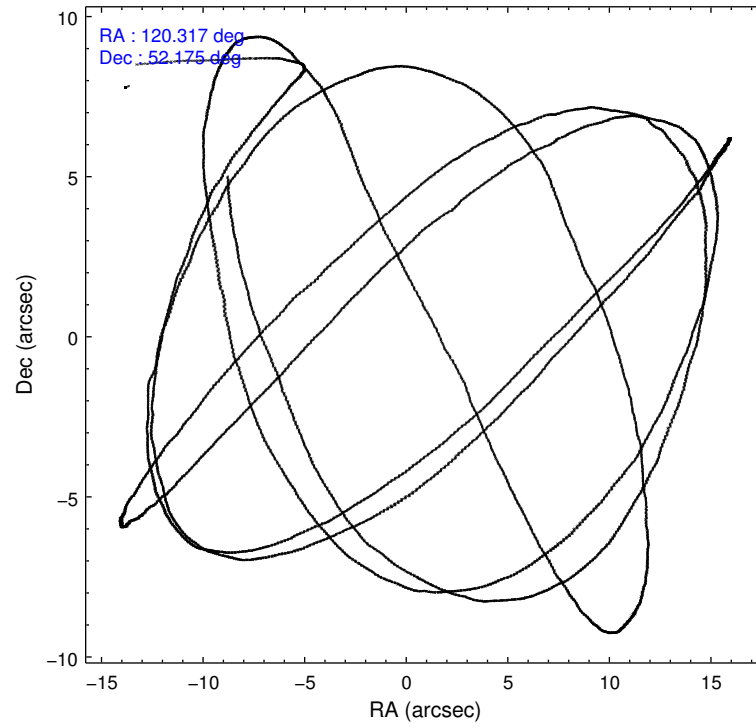
	ccd 2	ccd 3	ccd 6	ccd 7	ccd 8
level 1 events	45767	45050	47935	65707	61474
rejected events	40969	39907	42725	41079	48739
rejected %	89%	88%	89%	62%	79%

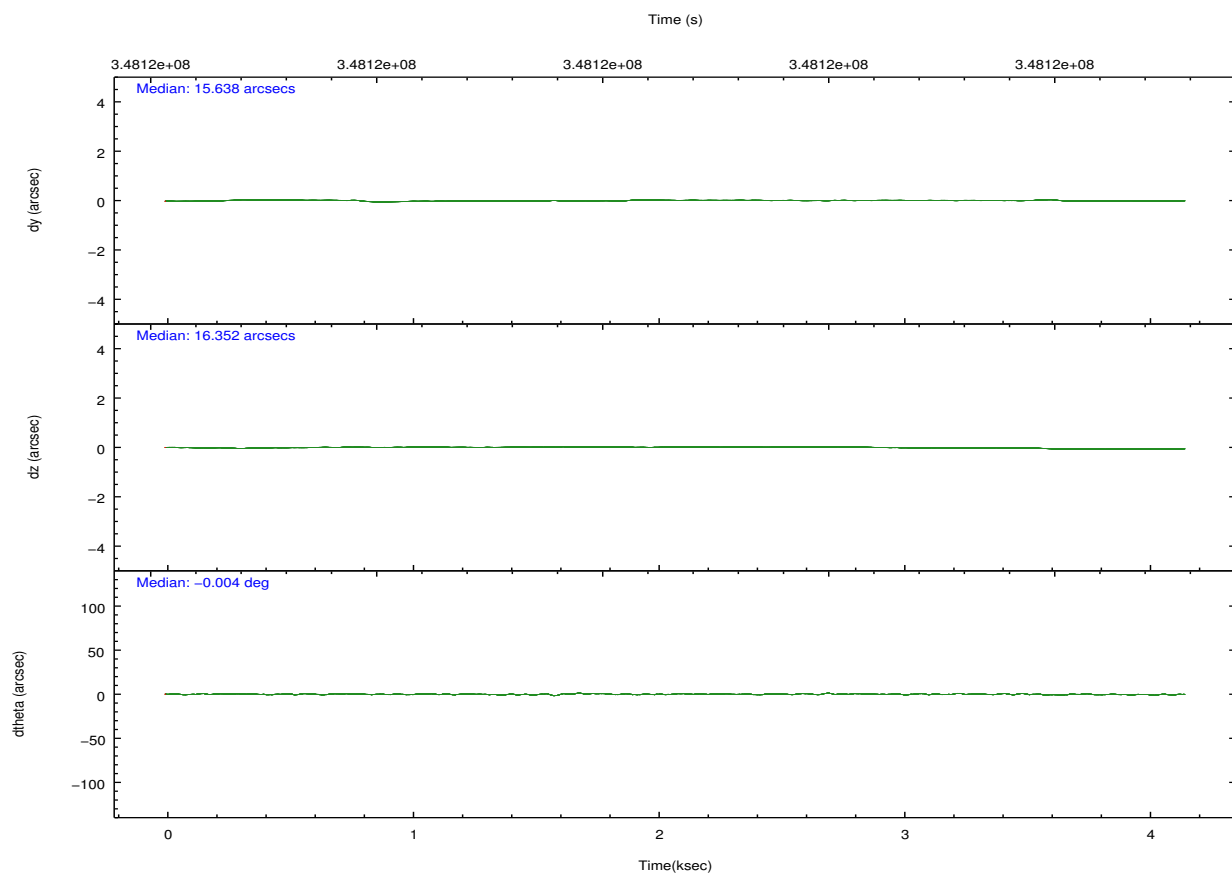
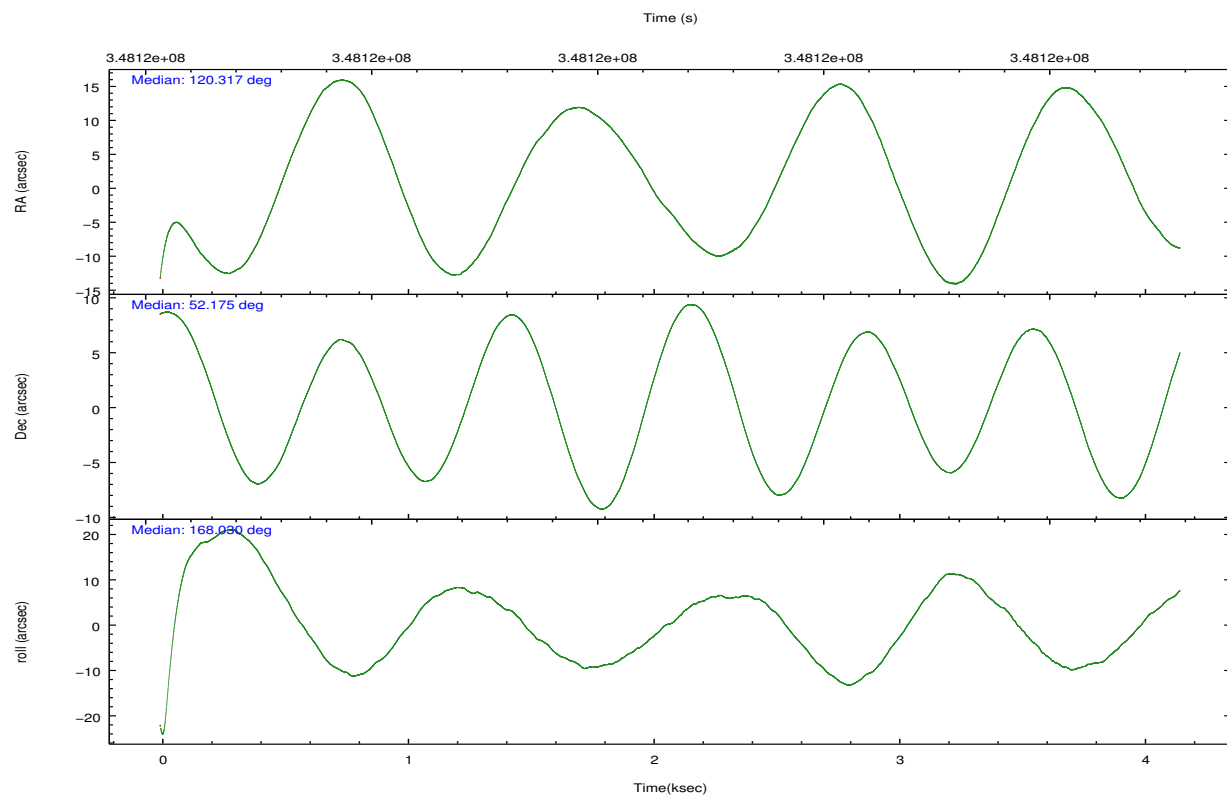
	ccd 2	ccd 3	ccd 6	ccd 7	ccd 8
grade 0 events	2233	2449	2271	2306	4472
	4%	5%	4%	3%	7%
grade 1 events	36	22	28	81	41
	0%	0%	0%	0%	0%
grade 2 events	1205	1145	1272	5642	3232
	2%	2%	2%	8%	5%
grade 3 events	494	514	539	2303	1494
	1%	1%	1%	3%	2%
grade 4 events	521	514	553	2256	1318
	1%	1%	1%	3%	2%
grade 5 events	1841	2171	2331	6160	3060
	4%	4%	4%	9%	4%
grade 6 events	880	1038	1118	14776	3548
	1%	2%	2%	22%	5%
grade 7 events	38557	37197	39823	32183	44309
	84%	82%	83%	48%	72%

2.2 Compared Parameters

Parameter	Planned	Actual	Parameter	Planned	Actual
Instrument	ACIS	ACIS	Obspar format version number	7	7
Detector	ACIS-23678	ACIS-23678	Obspar file type	PREDICTED	ACTUAL
Grating	NONE	NONE	Obspar update status	NONE	UPDATED
Data mode	VFAINT	VFAINT	CCD I0 on	N	N
Observation mode	POINTING	POINTING	CCD I1 on	N	N
[deg] Pointing RA	120.358941	120.3165909325424	CCD I2 on	O1	Y
[deg] Pointing Dec	52.183426	52.17455450691008	CCD I3 on	O2	Y
[deg] Pointing Roll	167.847706	168.0376482955119	CCD S0 on	N	N
[mm] SIM focus pos	-0.684267	-0.6828225247311905	CCD S1 on	N	N
[mm] SIM defocus	0	0.001444936568705701	CCD S2 on	Y	Y
[mm] SIM translation stage pos	-190.132523	-190.1400660498719	CCD S3 on	Y	Y
[mm] SIM translation stage offset	0	0.00754346686406393	CCD S4 on	Y	Y
[s] Observation start time (MET)	348116398.184000	348115192.95765	CCD S5 on	N	N
Observation start date	2009-01-12T02:58:52	2009-01-12T02:39:52	Number of optional ACIS chips dropped	0	0
[s] Observation end time (MET)	348120398.184000	348120654.67042	On-chip summing requested	N	N
Observation end date	2009-01-12T04:05:32	2009-01-12T04:10:54	Subarray requested	NONE	NONE
Read mode	TIMED	TIMED	Alternating exposures requested	N	N
			[s] Primary exposure time	0.000000	3.1

2.3 Aspect



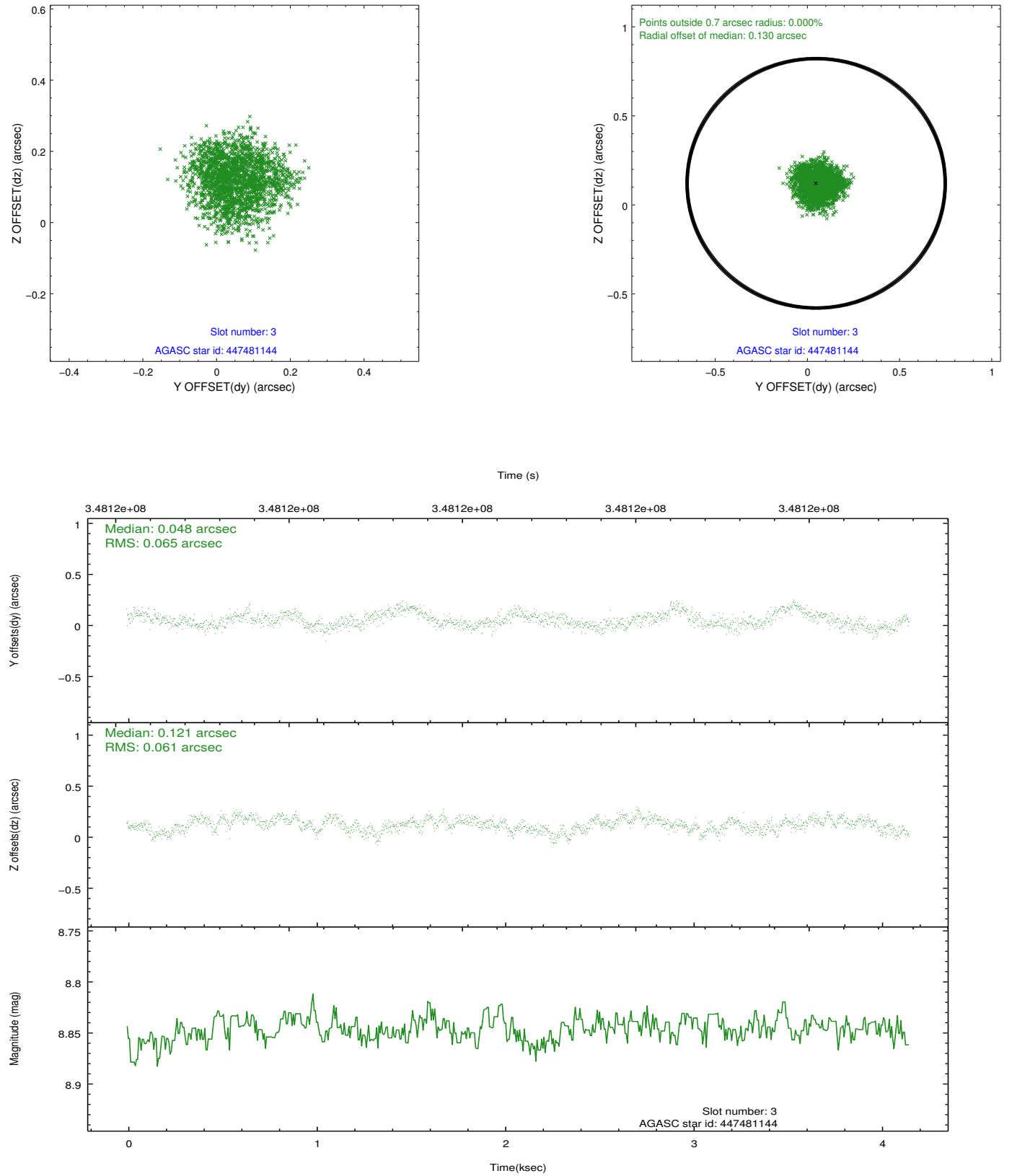


Slot Statistics

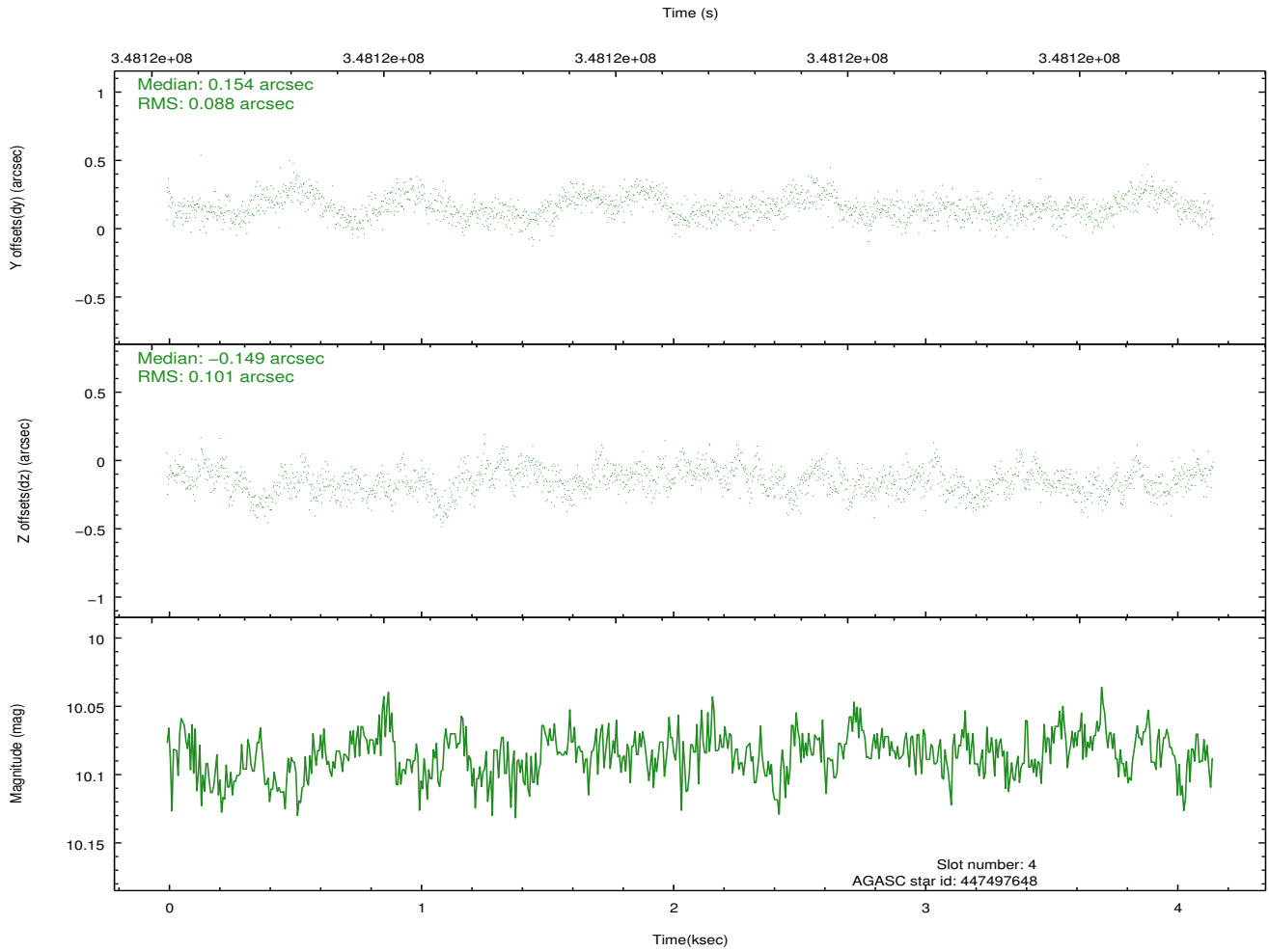
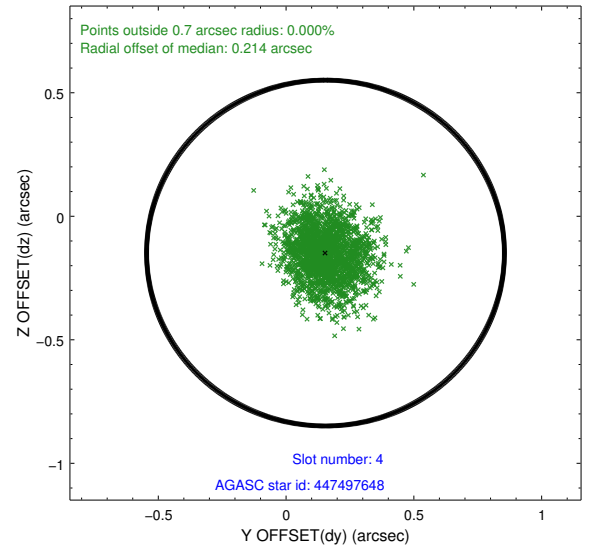
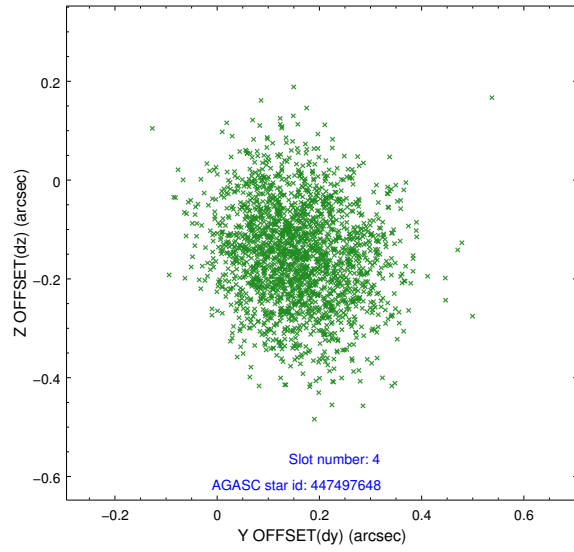
slot	status	id	mag	n_pts	med_dy	med_dz	dr1	dr2	ra	dec	mean_y	mean_z
0	FID	ACIS-S-2	6.88	1013	-0.084	-0.006	0.007	0.011	0.000000	0.000000	-768.72	-1737.76
1	FID	ACIS-S-4	6.96	1012	0.169	0.042	0.005	0.010	0.000000	0.000000	2144.14	169.19
2	FID	ACIS-S-5	6.99	1013	-0.116	-0.028	0.006	0.011	0.000000	0.000000	-1819.66	164.53
3	GUIDE	447481144	8.85	2024	0.048	0.121	0.097	0.147	121.225066	52.159513	-1885.57	-329.70
4	GUIDE	447497648	10.08	2020	0.154	-0.149	0.144	0.228	120.517584	51.695689	-716.61	1641.24
5	GUIDE	495853976	9.32	2023	0.027	0.282	0.142	0.228	119.543195	52.889874	2269.62	-2121.59
6	GUIDE	497568864	7.74	2026	-0.158	-0.059	0.083	0.125	120.873094	52.757244	-658.17	-2260.04
7	GUIDE	447357384	10.16	2020	-0.073	-0.186	0.184	0.297	119.820639	51.703338	810.49	1936.97

2.4 Star Slots

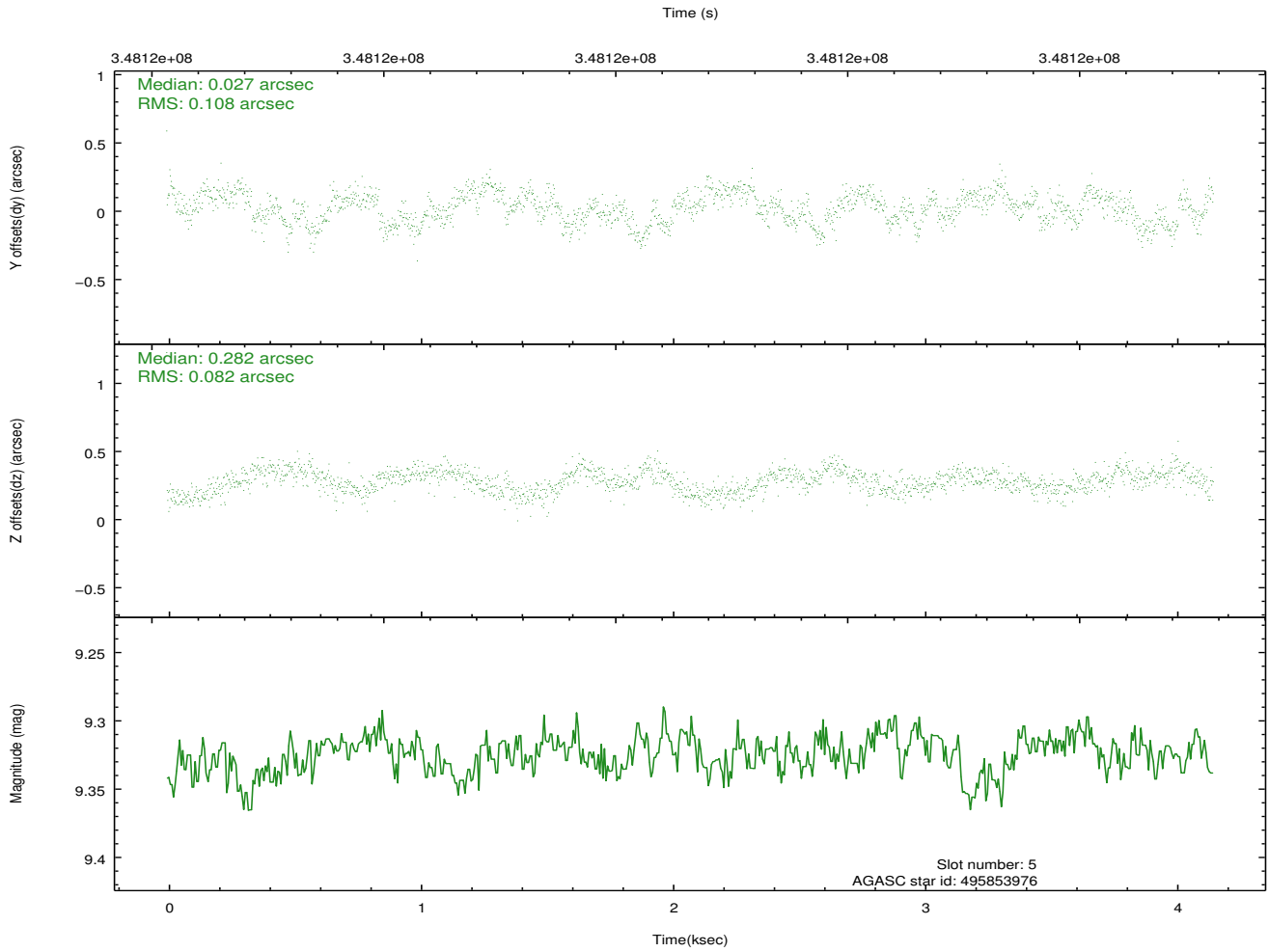
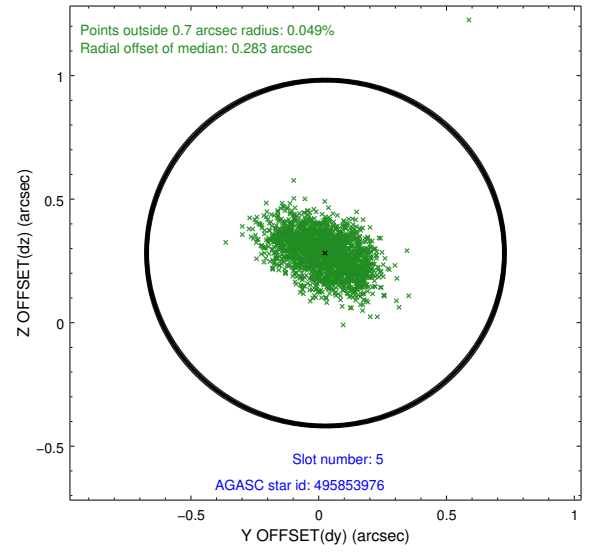
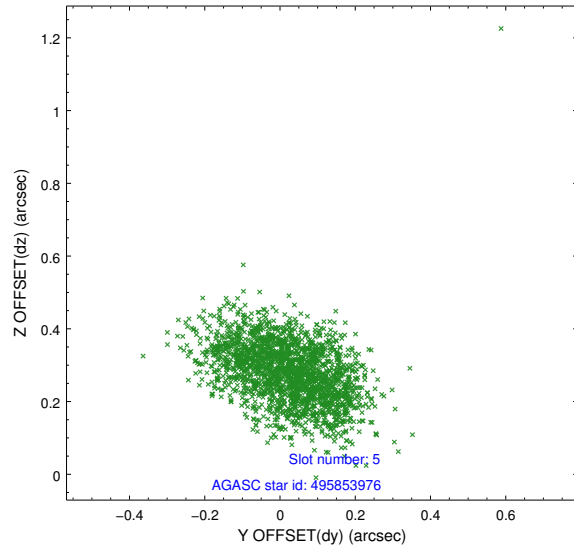
2.4.1 Slot 3



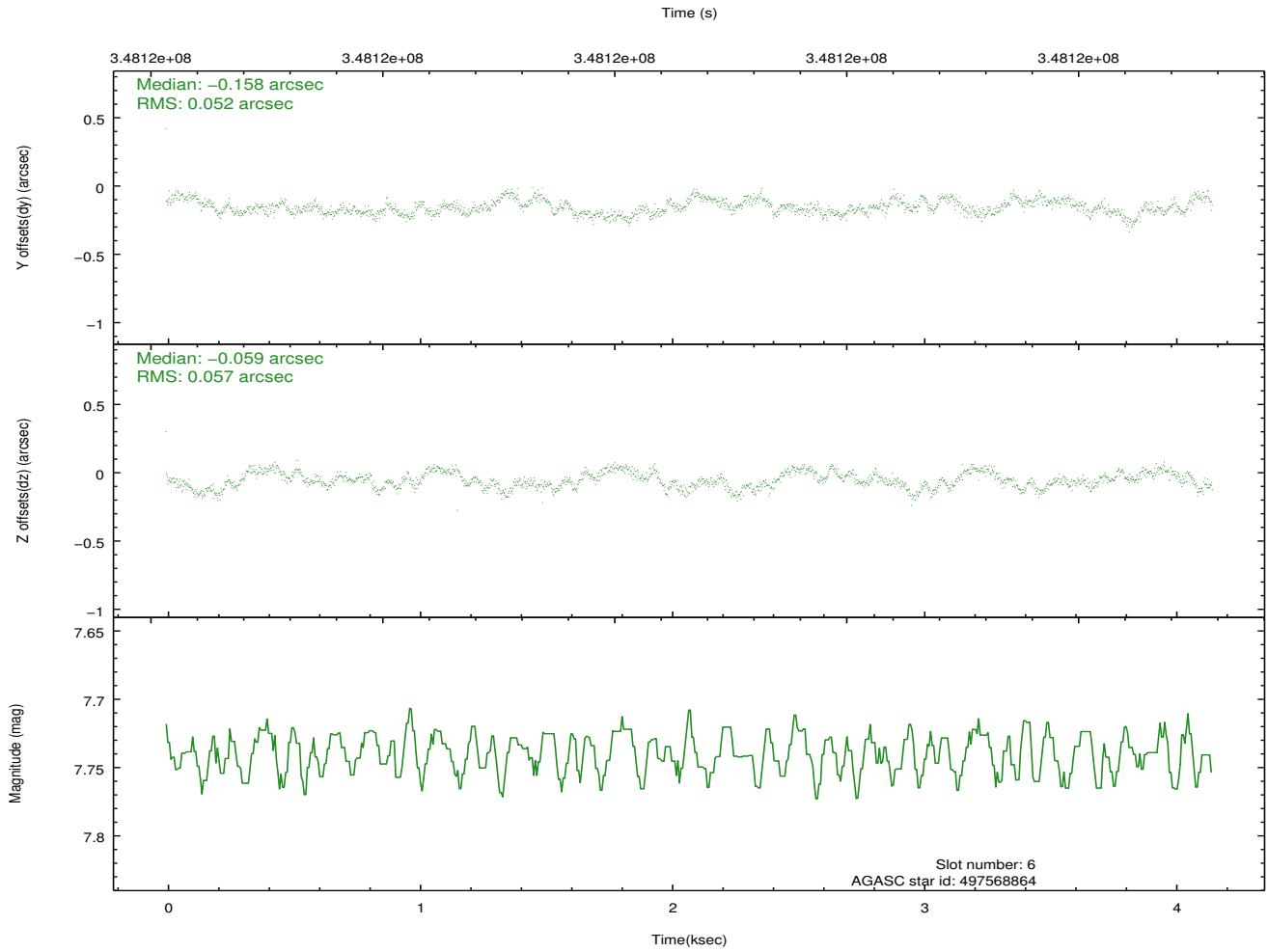
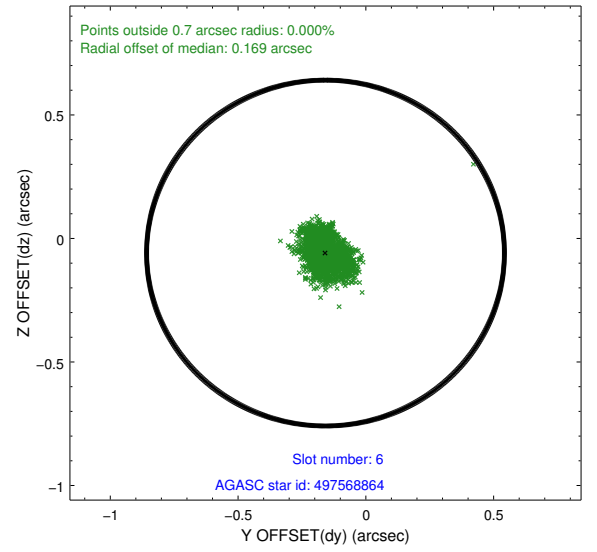
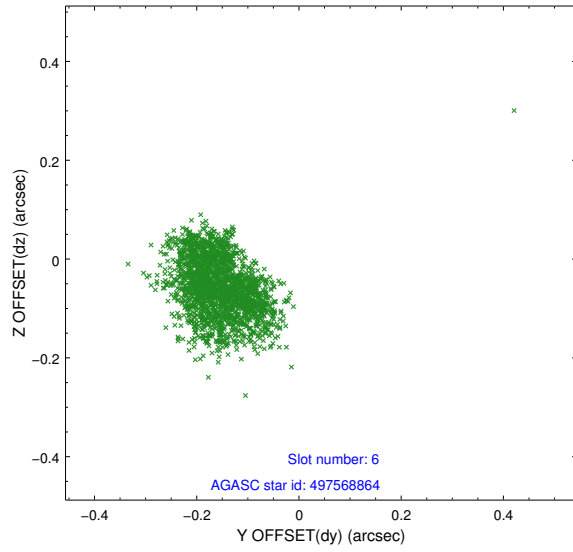
2.4.2 Slot 4



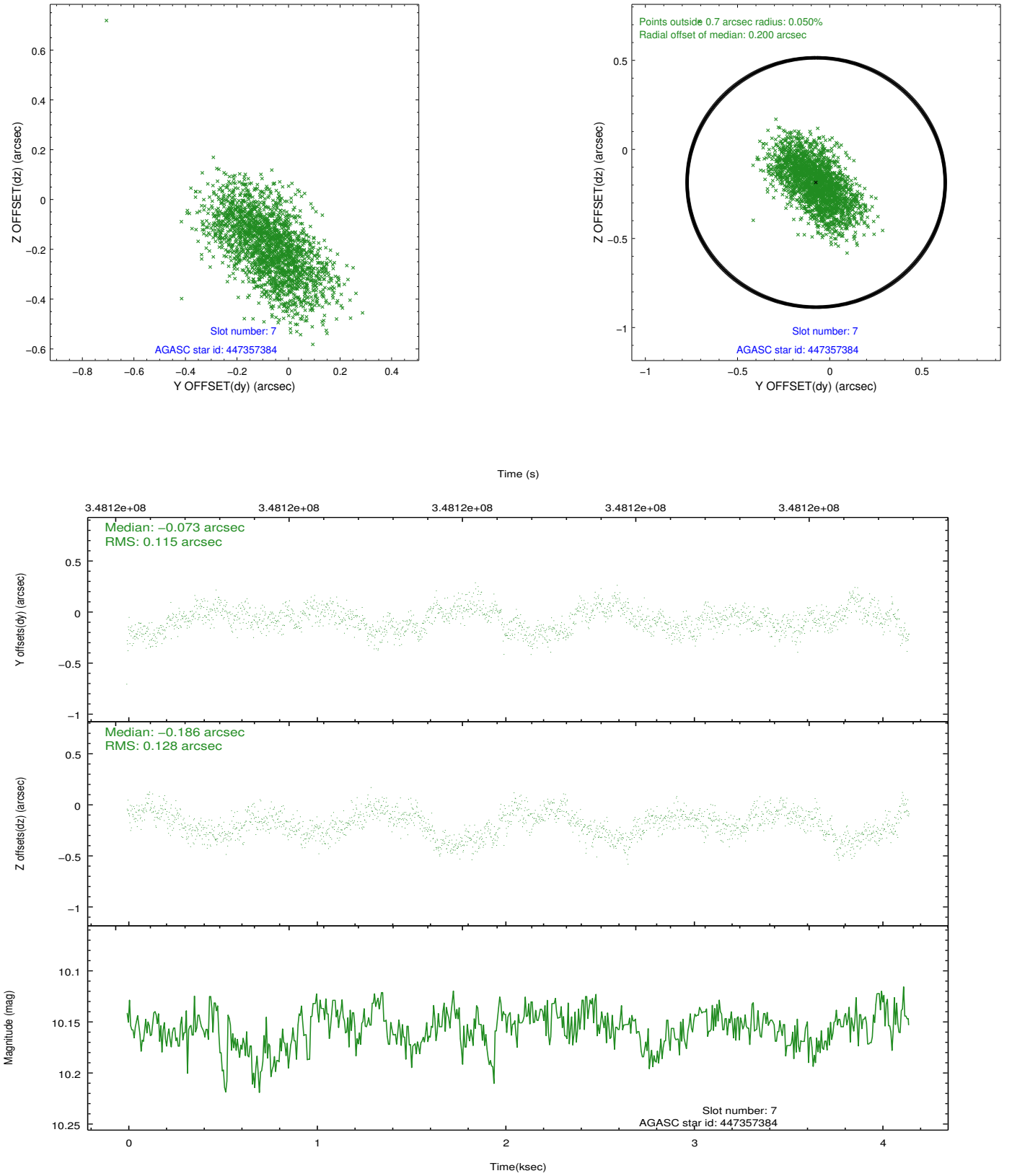
2.4.3 Slot 5



2.4.4 Slot 6

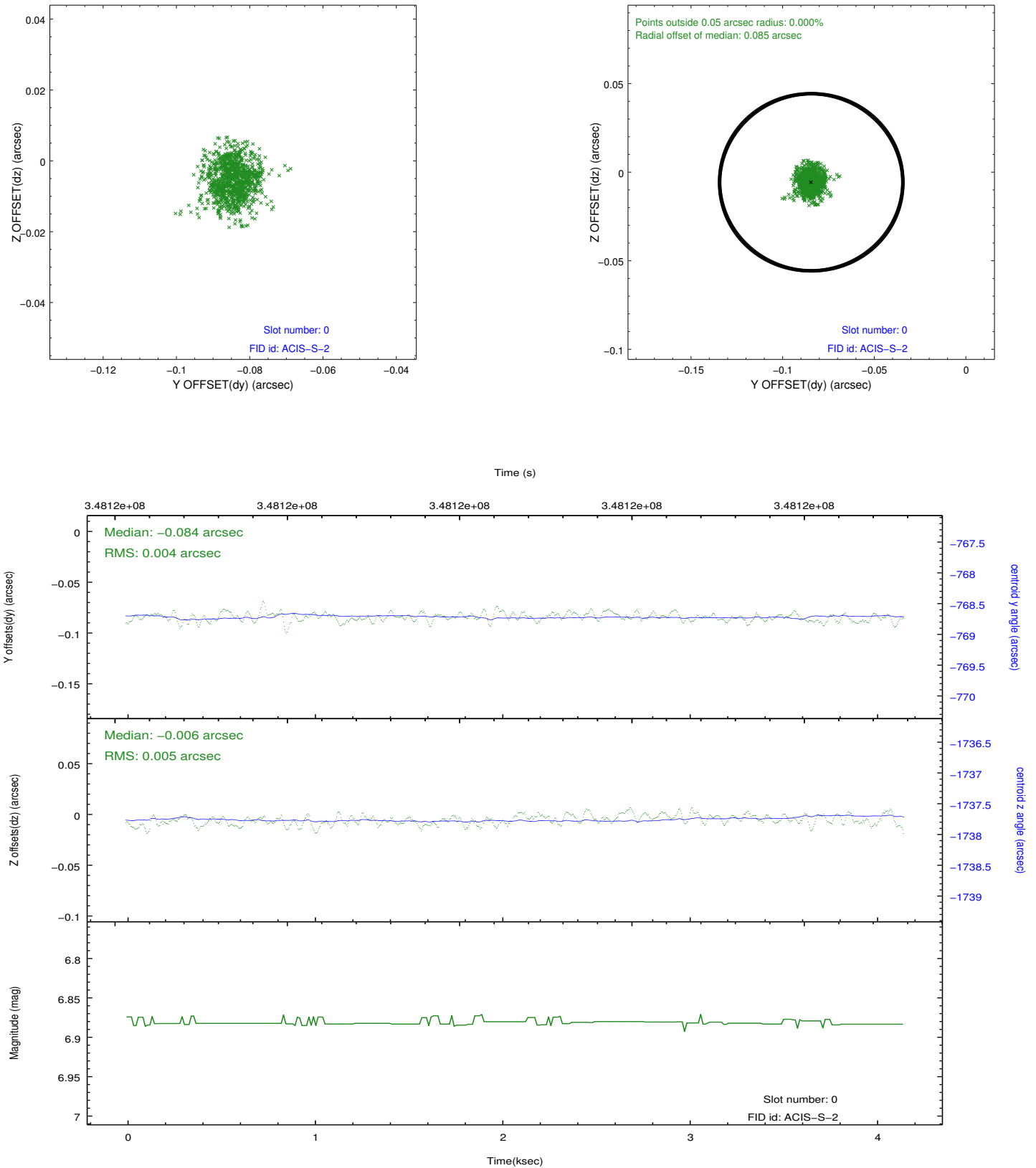


2.4.5 Slot 7

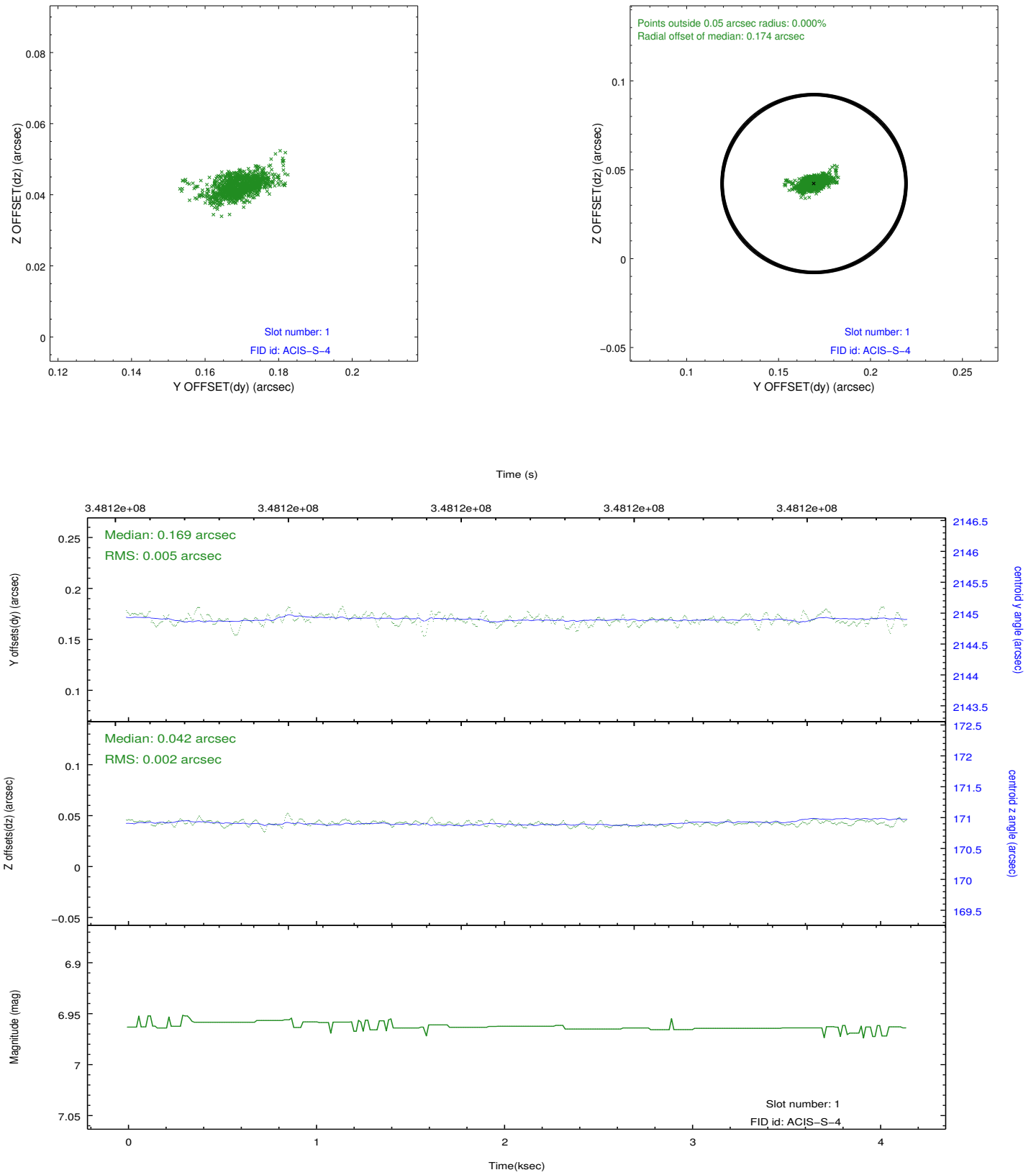


2.5 FID Slots

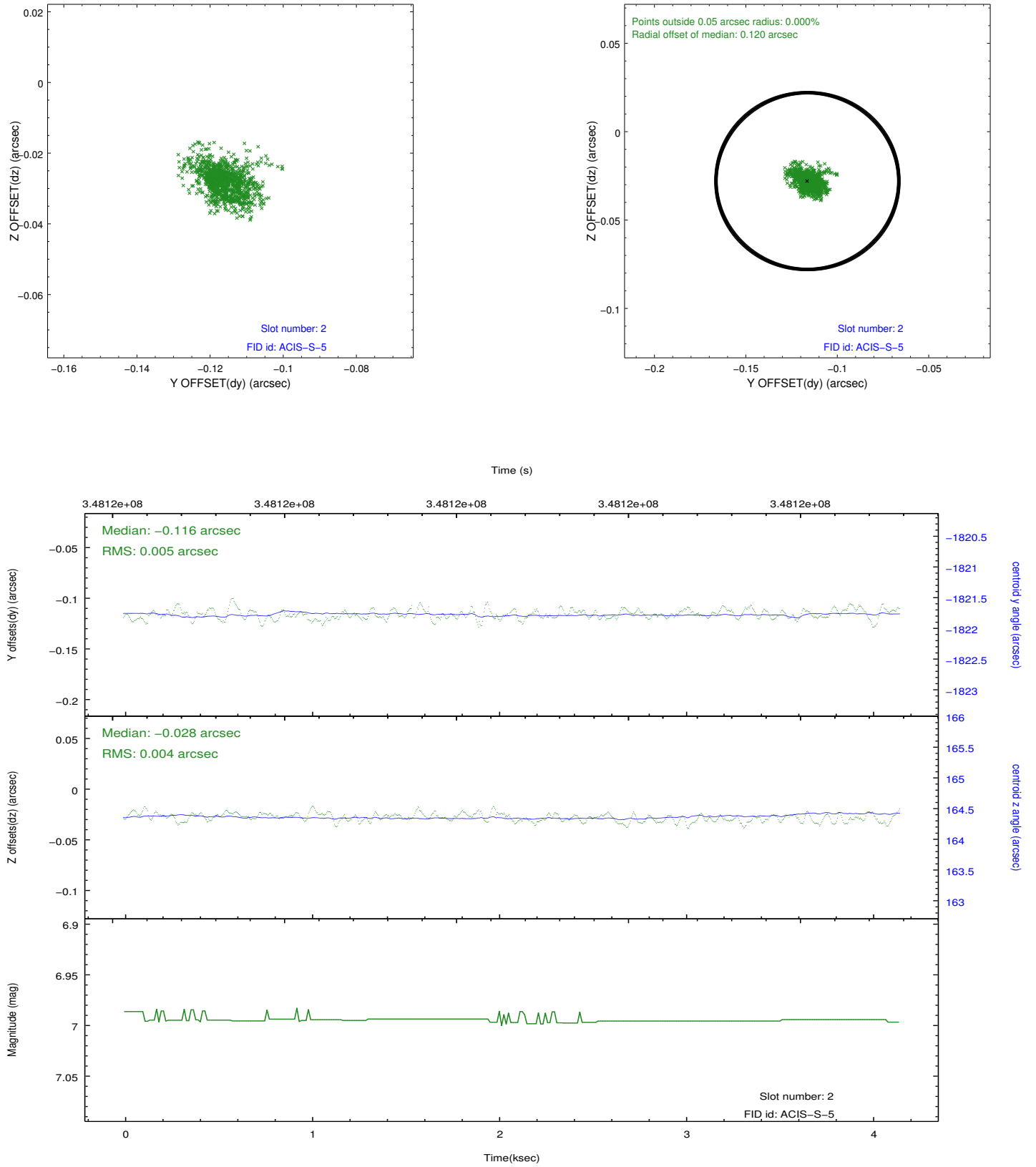
2.5.1 Slot 0



2.5.2 Slot 1



2.5.3 Slot 2



A Summary

A.1 Status

V&V Scientist	Beth Sundheim
V&V Date (YYYY-MM-DD)	2012.06.04
V&V Edition	1
V&V Disposition and Status	OK
V&V Charge Time	4.14470003

A.2 Comments