

V&V Reference Report

L2 ASCDS Version : 8.4.4

Observation 10730 - L2 Version 2
Chandra X-Ray Center

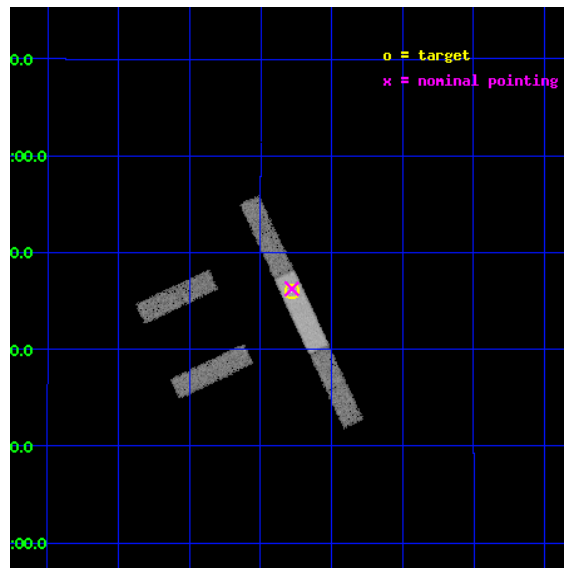
L2 Processing Date : May 23 2012

Contents

1	Front	2
2	OBI	3
2.1	OBI	3
2.1.1	Images	3
2.1.2	Bias	3
2.1.3	Parameters	4
2.1.4	Events	4
2.2	Compared Parameters	5
2.3	Aspect	6
2.4	Star Slots	9
2.4.1	Slot 3	9
2.4.2	Slot 4	10
2.4.3	Slot 5	11
2.4.4	Slot 6	12
2.4.5	Slot 7	13
2.5	FID Slots	14
2.5.1	Slot 0	14
2.5.2	Slot 1	15
2.5.3	Slot 2	16
A	Summary	17
A.1	Status	17
A.2	Comments	17

1 Front

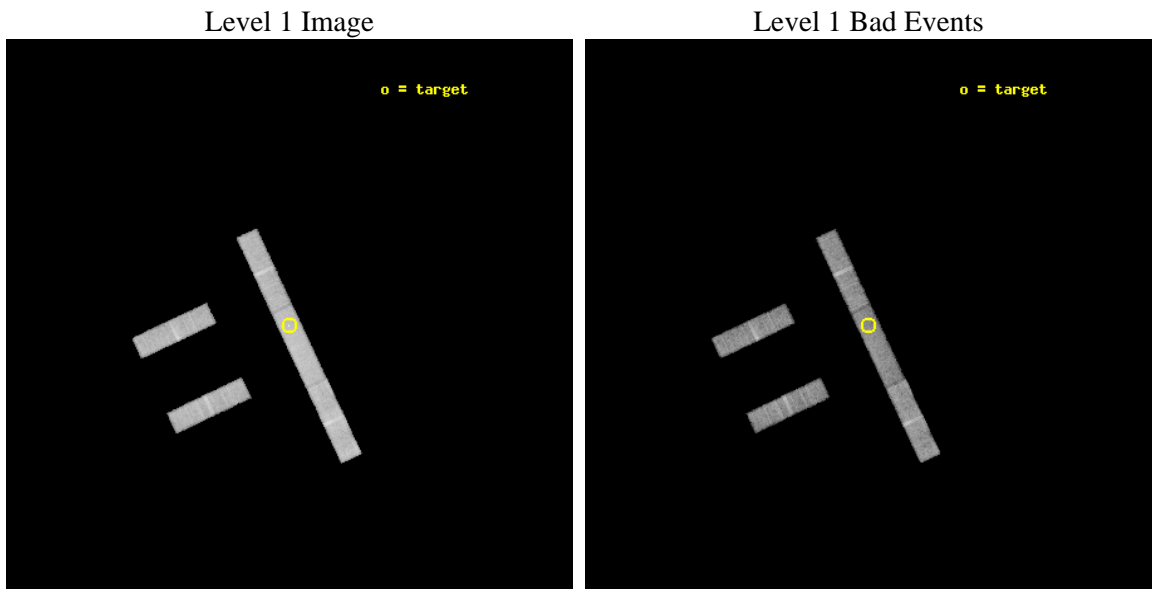
seq_num	701960	Sequence number
obs_id	10730	Observation id
title	Studying the Optical and X-ray Emission Regions of Quasar PG 1115+080 by Monitoring Microlensing Events	Proposal title
observer	Professor Gordon Garmire	Principal investigator
object	PG 1115+080	Source name
dtcycle	0	
cycle	P	events from which exps? Prim/Second/Both
ra_targ	169.570417	Observer's specified target RA [deg]
dec_targ	7.766111	Observer's specified target Dec [deg]
ra_nom	169.56987607822	Nominal RA [deg]
dec_nom	7.7709653579216	Nominal Dec [deg]
roll_nom	64.760883804789	Nominal Roll [deg]
revision	2	Processing version of data
ontime	15242.0	Sum of GTIs [s]
livetime	14641.128102667	Livetime [s]
ontime2	15240.958979845	Sum of GTIs [s]
ontime3	15242.0	Sum of GTIs [s]
ontime6	15242.0	Sum of GTIs [s]
ontime7	15242.0	Sum of GTIs [s]
ontime8	15242.0	Sum of GTIs [s]
l2events	41669	Number of level 2 events



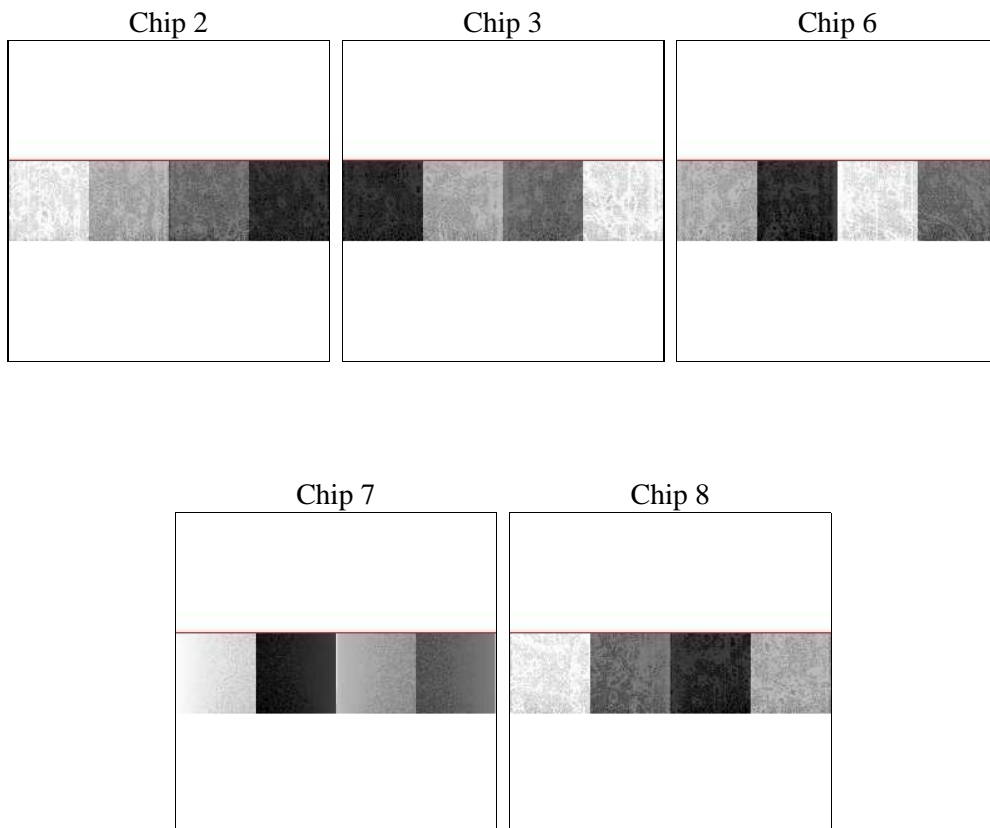
2 OBI

2.1 OBI

2.1.1 Images



2.1.2 Bias



2.1.3 Parameters

obi_num	0	Obi number	sched_exp_time	15079.678000	[s] Scheduled observation exposure time
ascdsver	8.4.4	Processing system revision	ontime	15242.0	Sum of GTIs [s]
caldsver	4.4.9	 	ontime2	15240.958979845	Sum of GTIs [s]
date	2012-05-23T12:11:18	Date and time of file creation	ontime3	15242.0	Sum of GTIs [s]
revision	2	Processing version of data	ontime6	15242.0	Sum of GTIs [s]
			ontime7	15242.0	Sum of GTIs [s]
			ontime8	15242.0	Sum of GTIs [s]
			l1events	270378	Number of level 1 events

2.1.4 Events

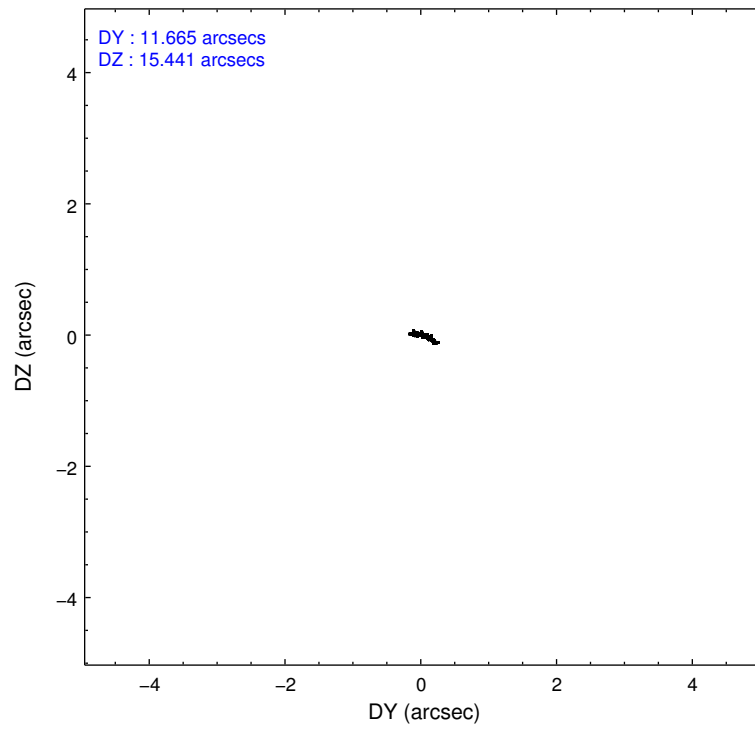
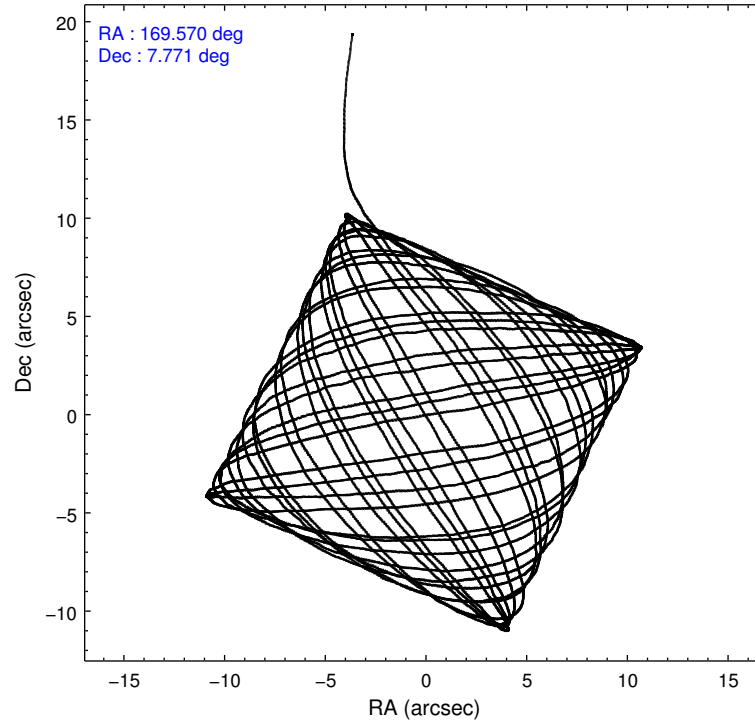
	ccd 2	ccd 3	ccd 6	ccd 7	ccd 8
level 1 events	46083	47243	48837	62564	65651
rejected events	41014	41967	43477	38127	52558
rejected %	89%	88%	89%	60%	80%

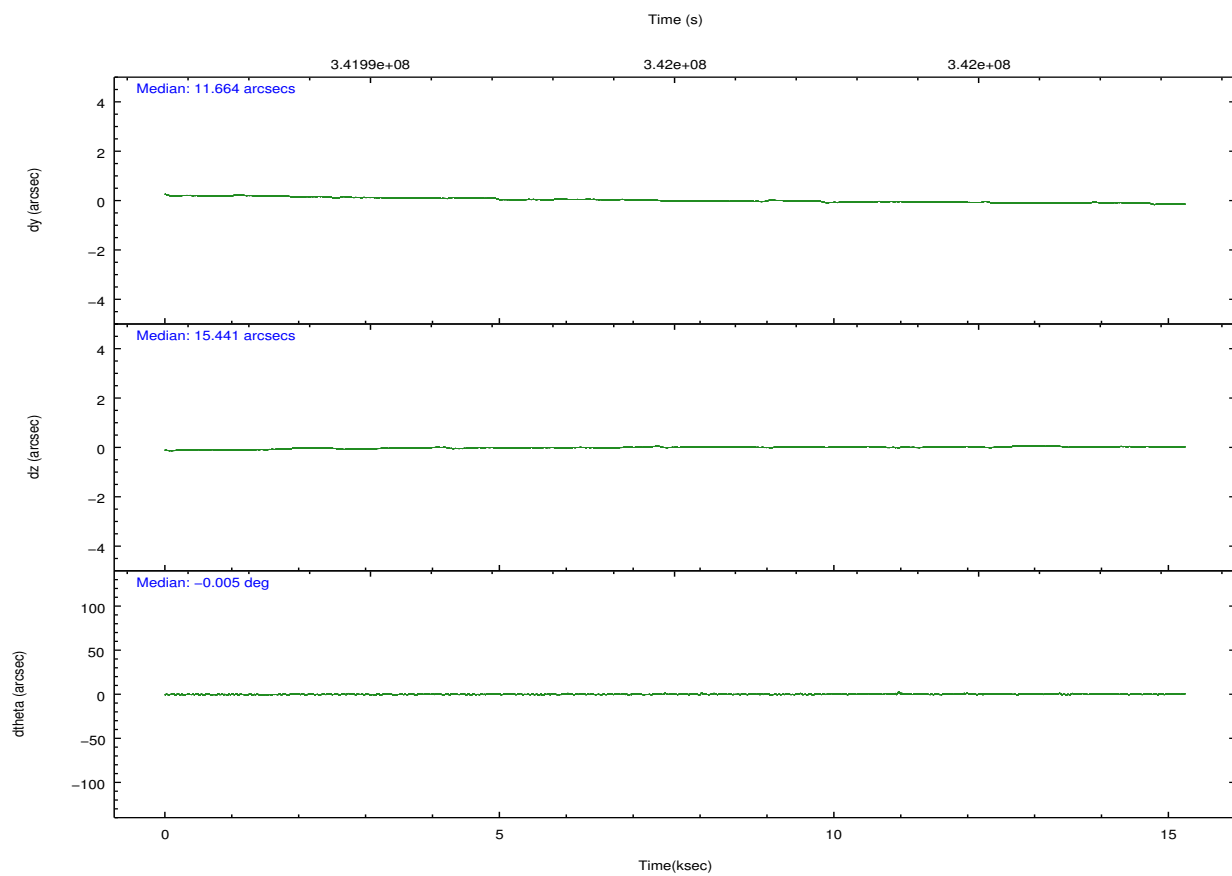
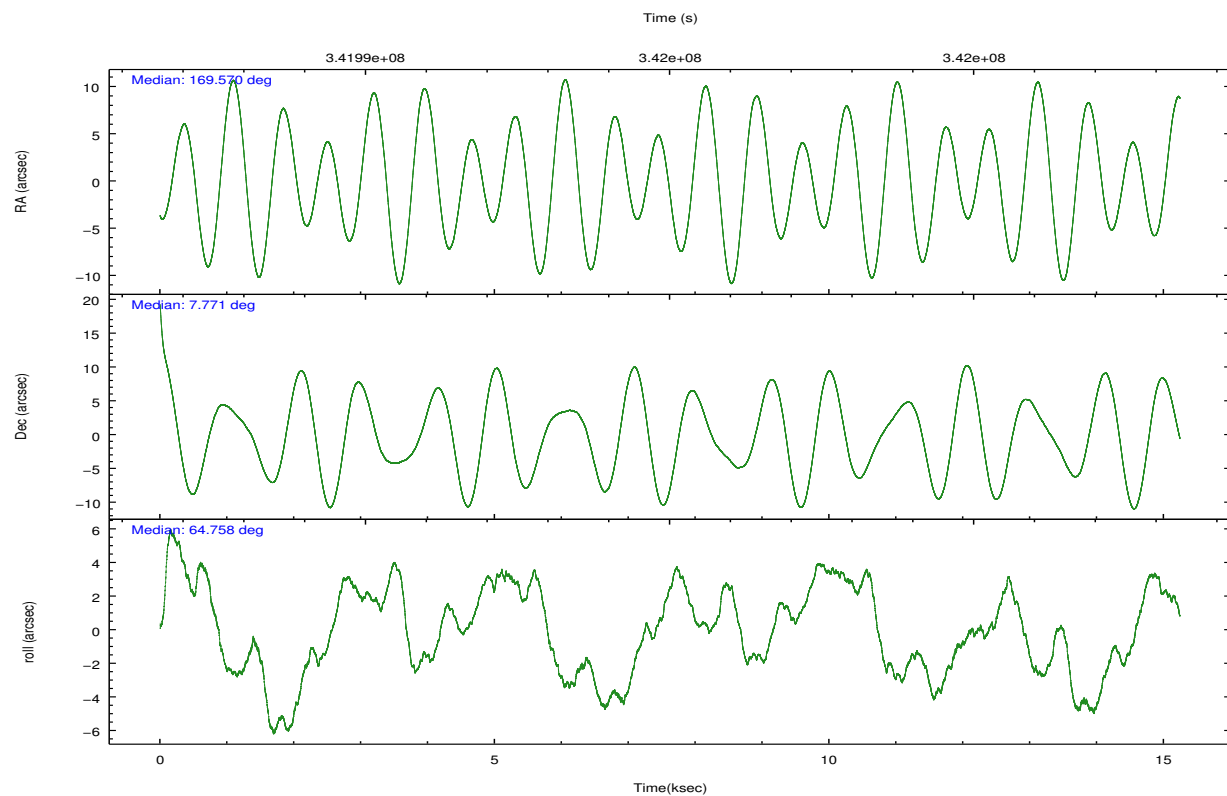
	ccd 2	ccd 3	ccd 6	ccd 7	ccd 8
grade 0 events	2273	2379	2073	2689	3897
	4%	5%	4%	4%	5%
grade 1 events	22	27	13	64	36
	0%	0%	0%	0%	0%
grade 2 events	1019	960	1160	5657	3213
	2%	2%	2%	9%	4%
grade 3 events	718	781	801	2764	1616
	1%	1%	1%	4%	2%
grade 4 events	766	754	774	2806	1510
	1%	1%	1%	4%	2%
grade 5 events	1575	2051	2098	5947	2686
	3%	4%	4%	9%	4%
grade 6 events	842	962	1136	13059	4051
	1%	2%	2%	20%	6%
grade 7 events	38868	39329	40782	29578	48642
	84%	83%	83%	47%	74%

2.2 Compared Parameters

Parameter	Planned	Actual	Parameter	Planned	Actual
Instrument	ACIS	ACIS	Obspar format version number	7	7
Detector	ACIS-23678	ACIS-23678	Obspar file type	PREDICTED	ACTUAL
Grating	NONE	NONE	Obspar update status	NONE	UPDATED
Data mode	VFAINT	VFAINT	CCD I0 on	N	N
Observation mode	POINTING	POINTING	CCD I1 on	N	N
[deg] Pointing RA	169.572537	169.5698760782246	CCD I2 on	O1	Y
[deg] Pointing Dec	7.743716	7.770965357921603	CCD I3 on	O2	Y
[deg] Pointing Roll	64.603909	64.76088380478906	CCD S0 on	N	N
[mm] SIM focus pos	-0.684267	-0.6828225247311905	CCD S1 on	N	N
[mm] SIM defocus	0	0.001444936568705701	CCD S2 on	O4	Y
[mm] SIM translation stage pos	-190.132523	-190.1425803651734	CCD S3 on	Y	Y
[mm] SIM translation stage offset	0	0.01005778216563158	CCD S4 on	O3	Y
[s] Observation start time (MET)	341987560.184000	341985831.02986	CCD S5 on	N	N
Observation start date	2008-11-02T04:31:35	2008-11-02T04:03:51	Number of optional ACIS chips dropped	0	0
[s] Observation end time (MET)	342002639.184000	342002868.0682	On-chip summing requested	N	N
Observation end date	2008-11-02T08:42:54	2008-11-02T08:47:48	Subarray requested	CUSTOM	1/4
Read mode	TIMED	TIMED	Subarray start row	385	385
			Subarray row count	256	256
			Alternating exposures requested	N	N
			[s] Primary exposure time	0.000000	1

2.3 Aspect



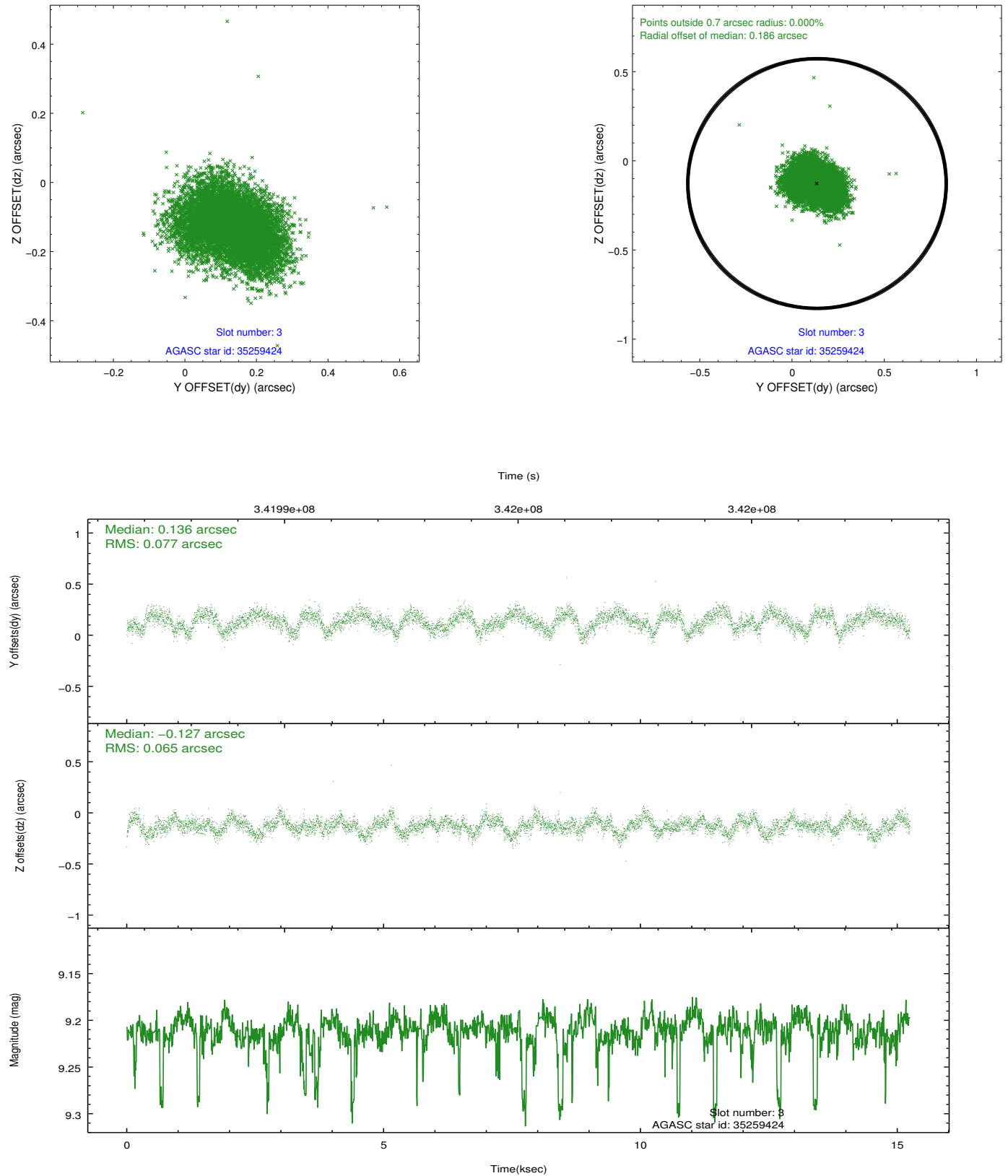


Slot Statistics

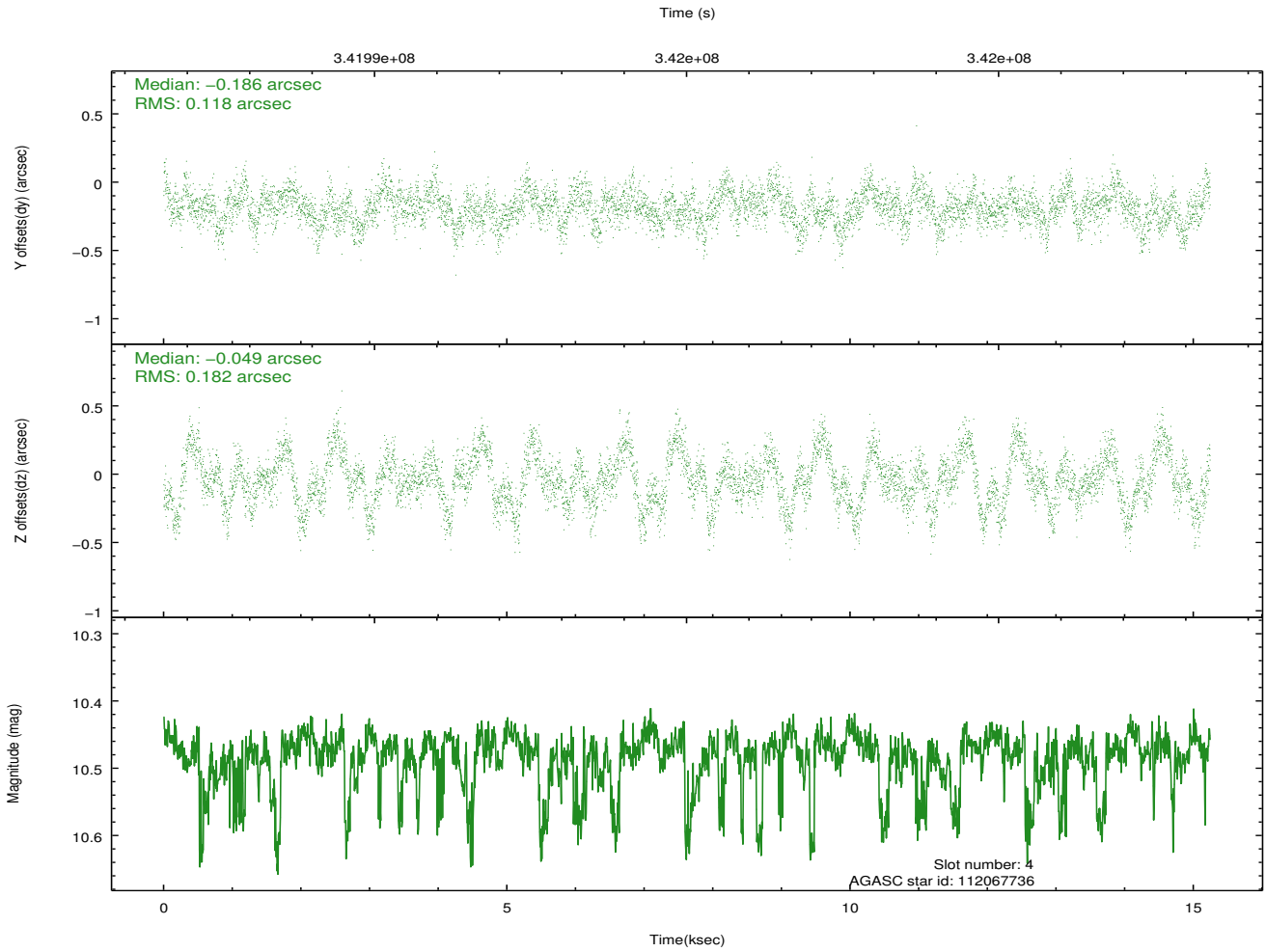
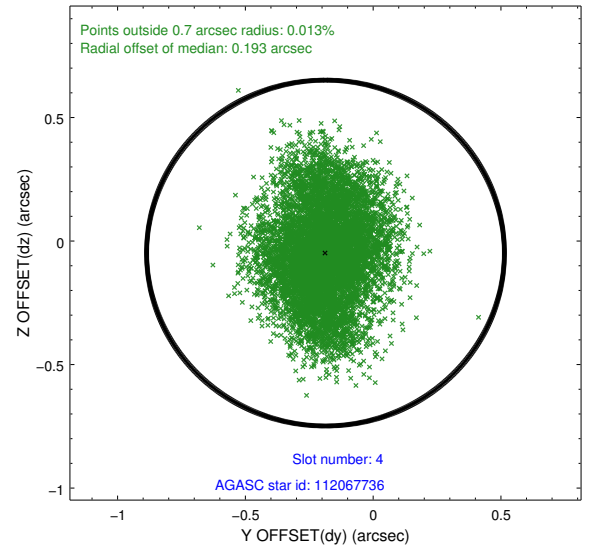
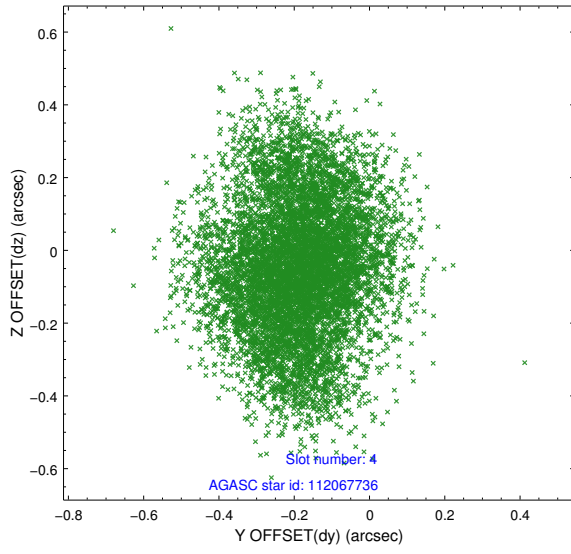
slot	status	id	mag	n_pts	med_dy	med_dz	dr1	dr2	ra	dec	mean_y	mean_z
0	FID	ACIS-S-2	6.90	3717	-0.045	-0.005	0.006	0.010	0.000000	0.000000	-764.58	-1736.79
1	FID	ACIS-S-4	6.99	3718	0.113	0.023	0.005	0.011	0.000000	0.000000	2148.69	171.46
2	FID	ACIS-S-5	7.02	3717	-0.099	-0.009	0.006	0.011	0.000000	0.000000	-1817.13	165.38
3	GUIDE	35259424	9.21	7414	0.136	-0.127	0.108	0.171	169.225147	7.406887	-1626.77	600.72
4	GUIDE	112067736	10.48	7421	-0.186	-0.049	0.235	0.372	169.254540	7.940950	155.22	1329.23
5	GUIDE	112068312	9.88	7424	0.121	-0.029	0.120	0.197	169.673636	8.146330	1463.94	296.68
6	GUIDE	112068528	8.76	7433	0.150	0.191	0.092	0.148	169.984852	7.578312	94.20	-1583.76
7	GUIDE	35262512	9.39	7428	-0.212	0.003	0.158	0.242	169.912813	6.863684	-2340.75	-2458.28

2.4 Star Slots

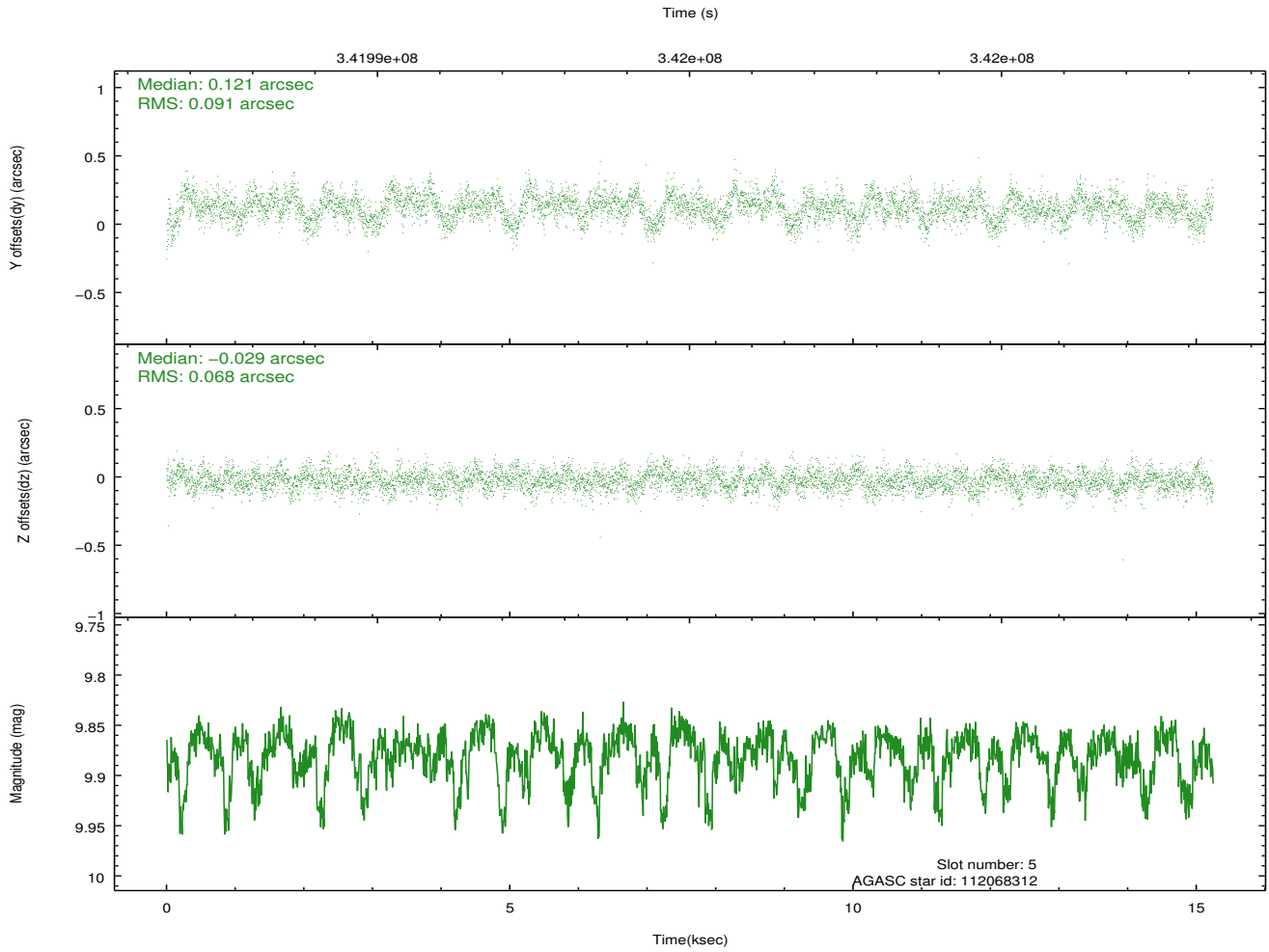
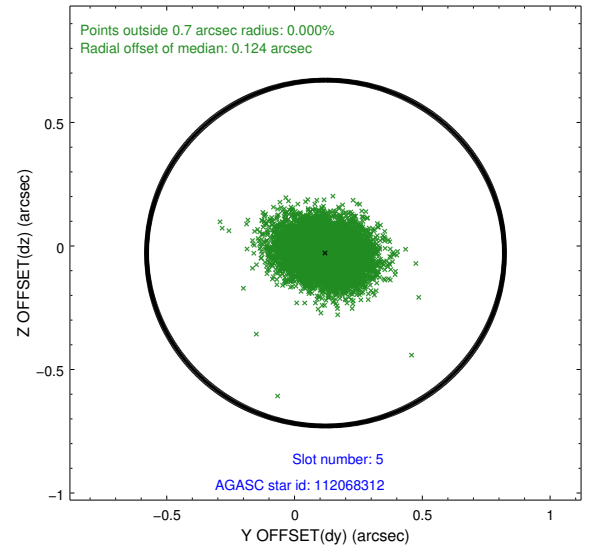
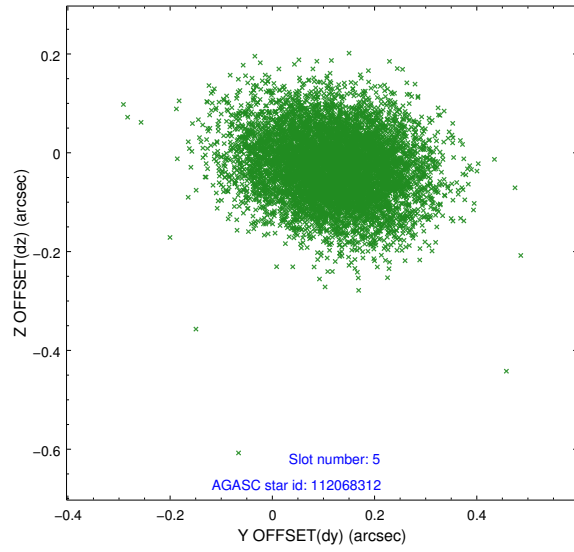
2.4.1 Slot 3



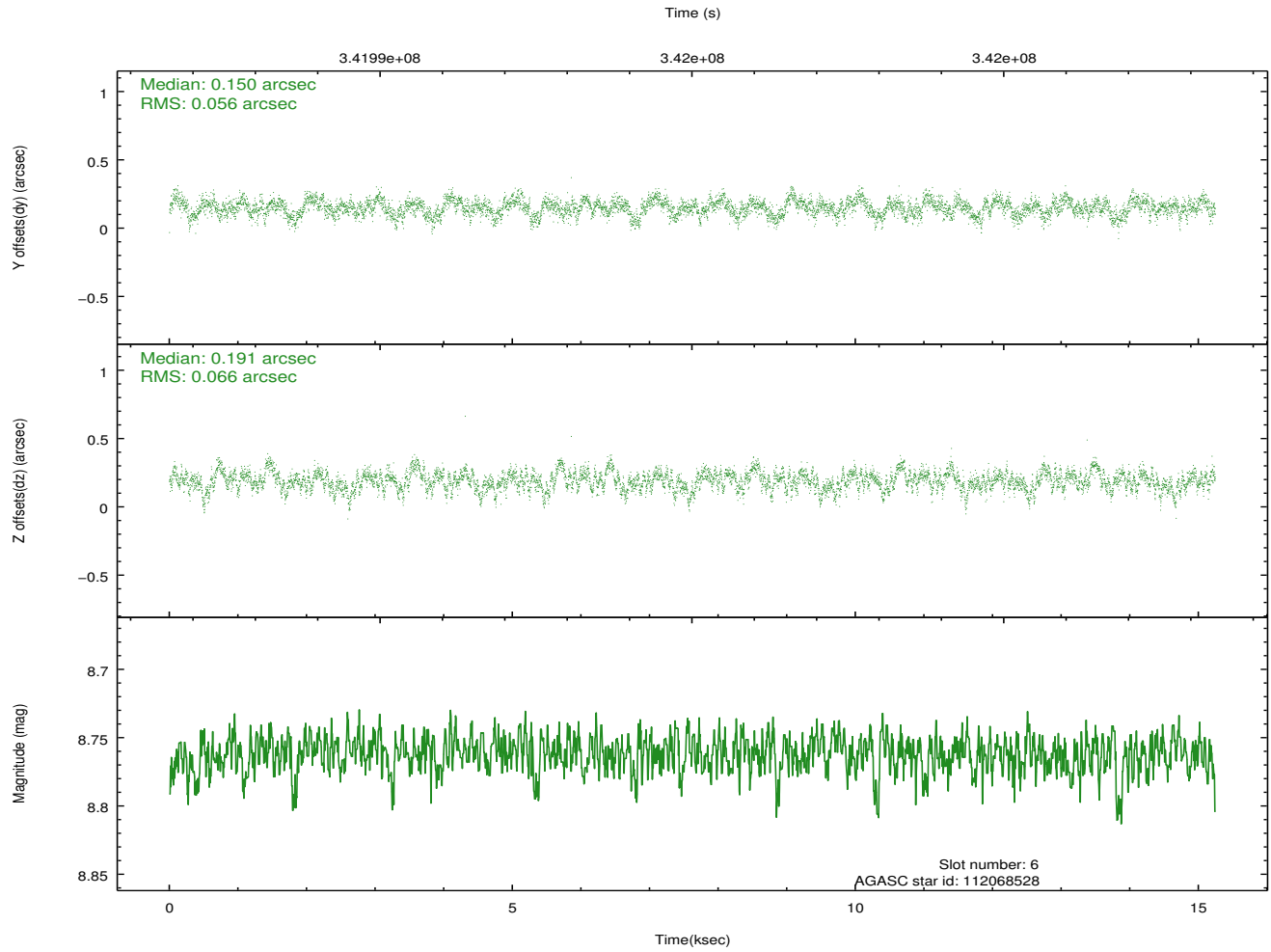
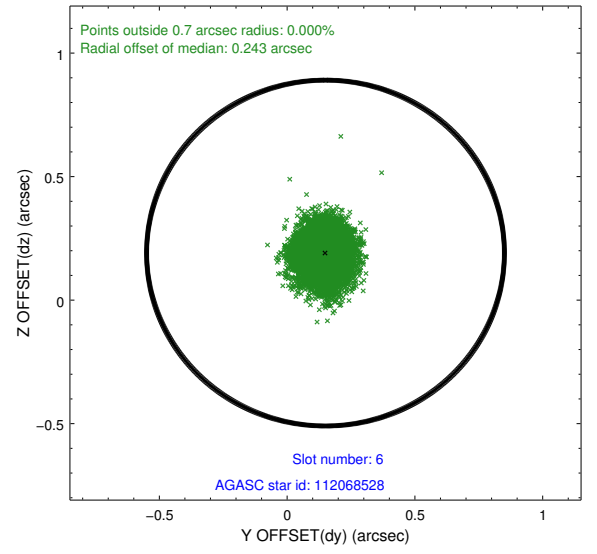
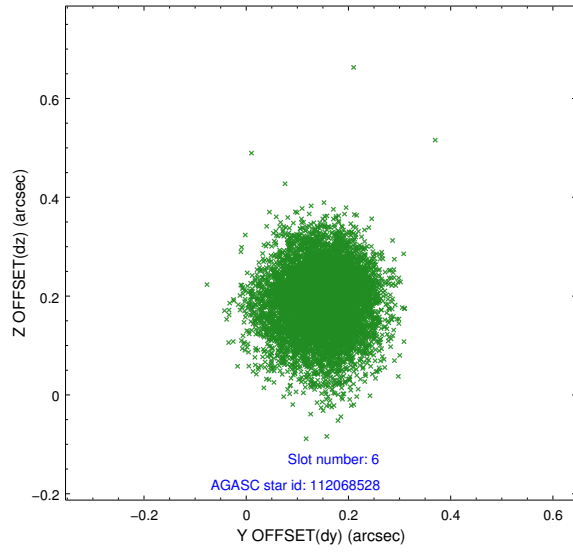
2.4.2 Slot 4



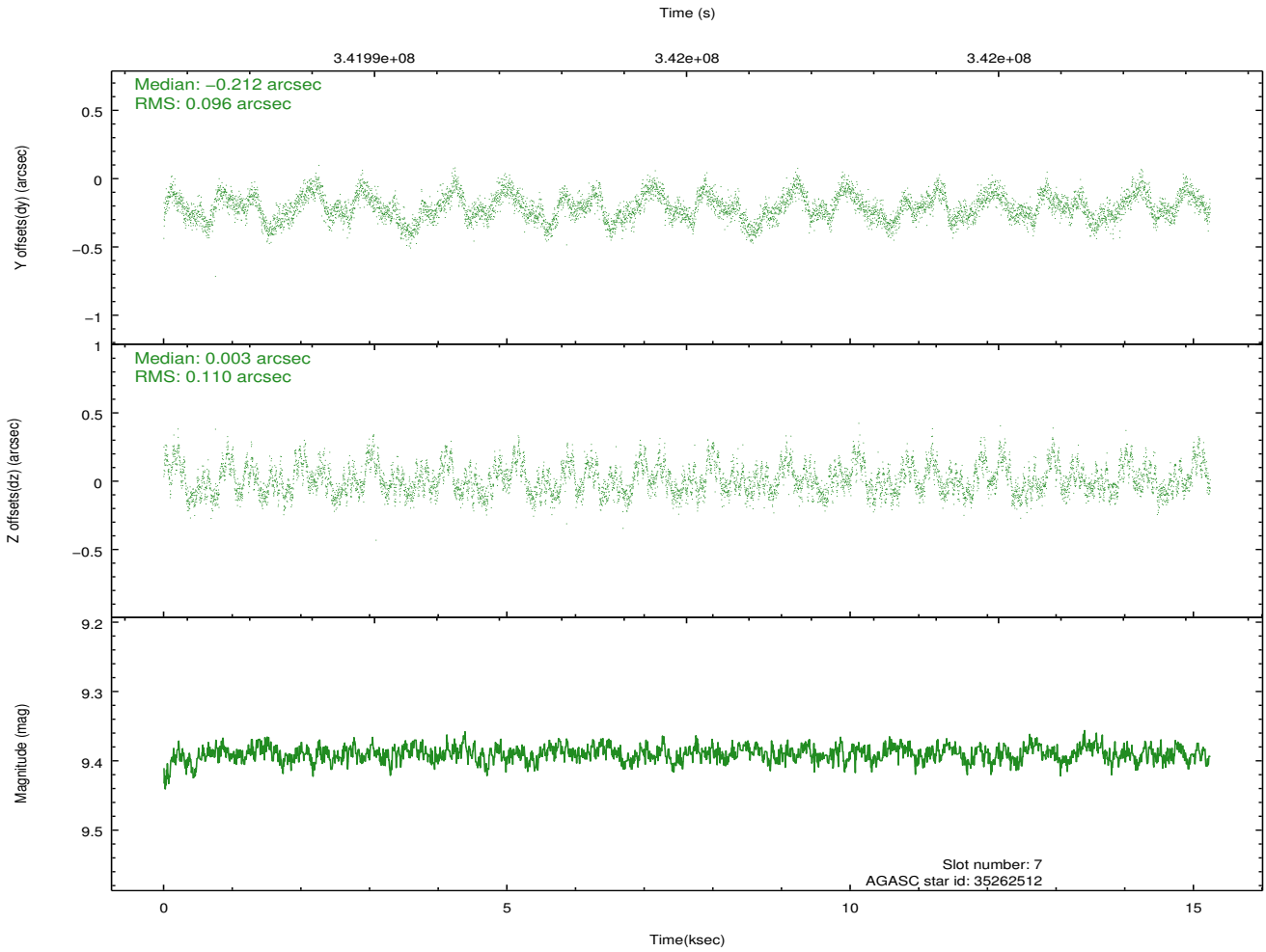
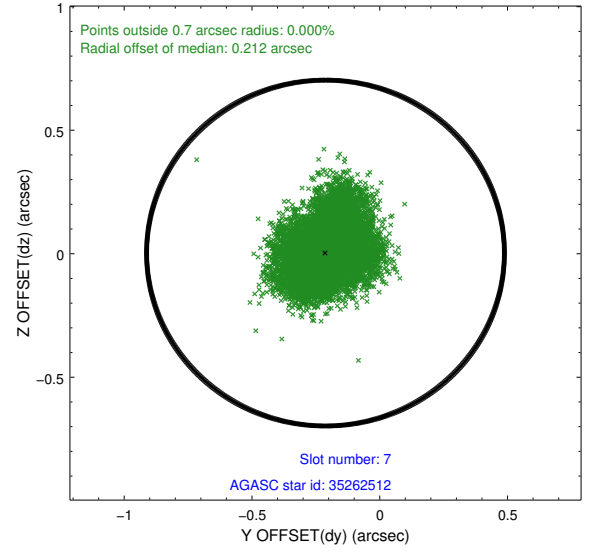
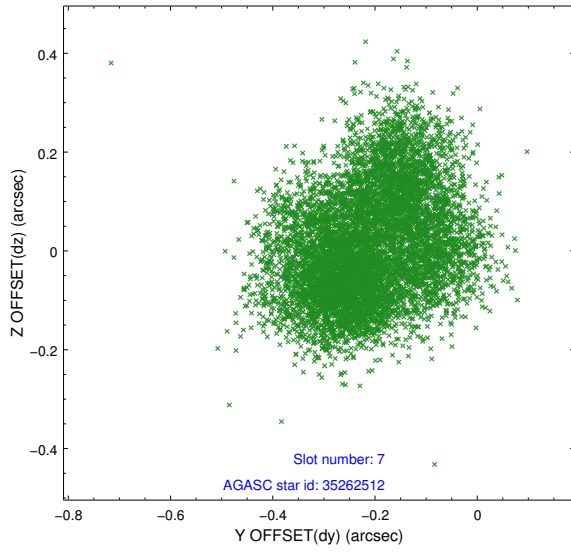
2.4.3 Slot 5



2.4.4 Slot 6

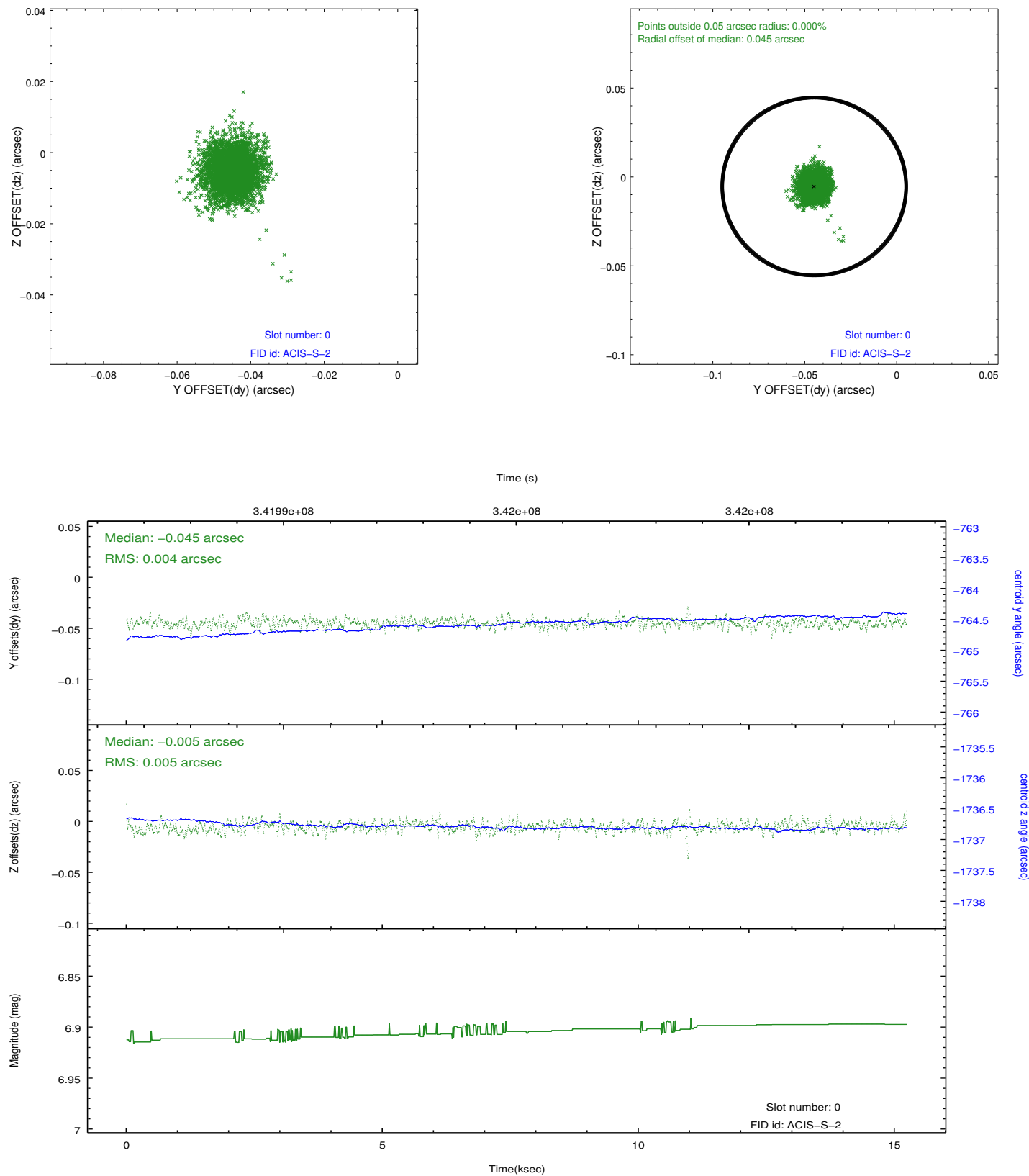


2.4.5 Slot 7

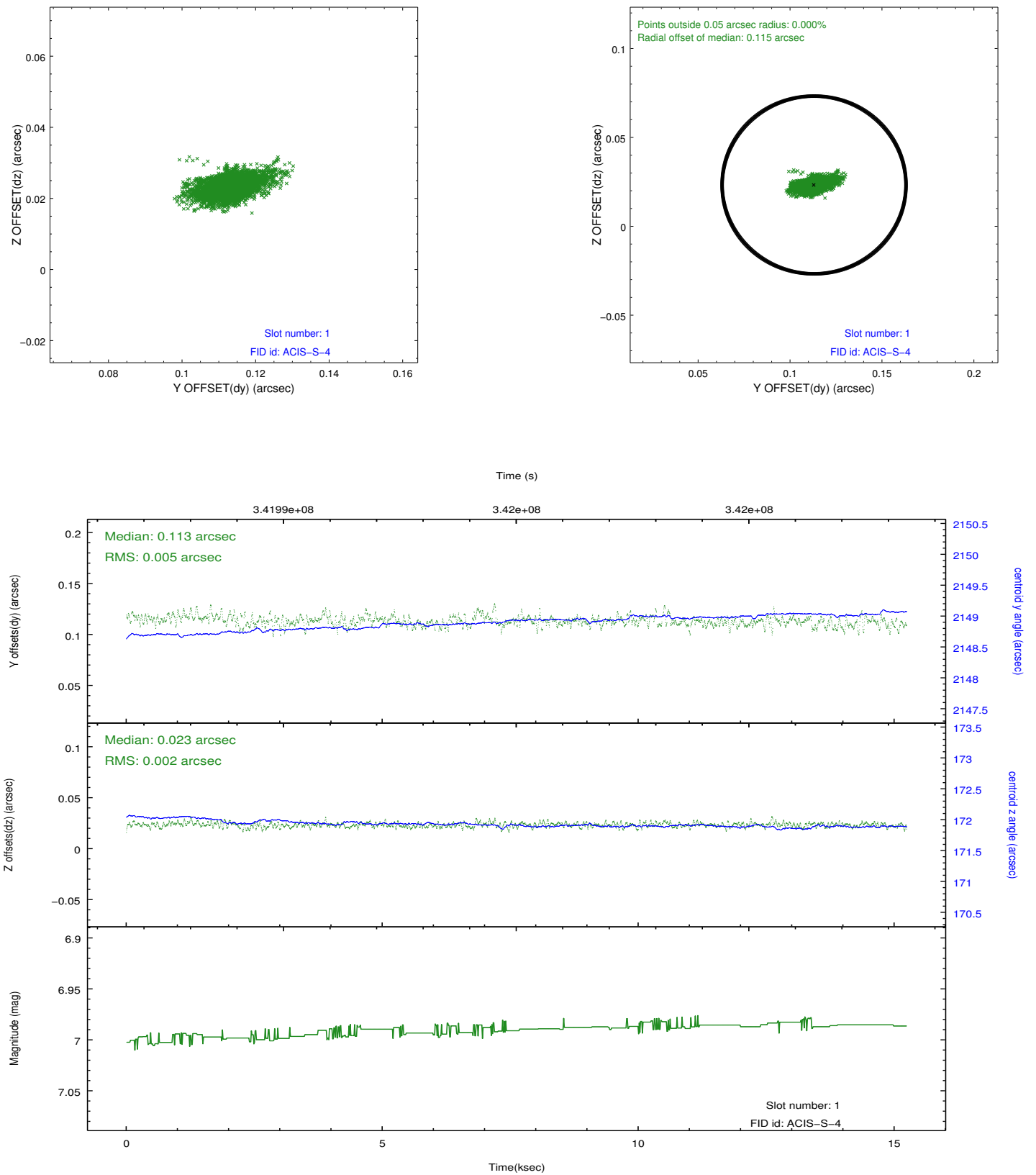


2.5 FID Slots

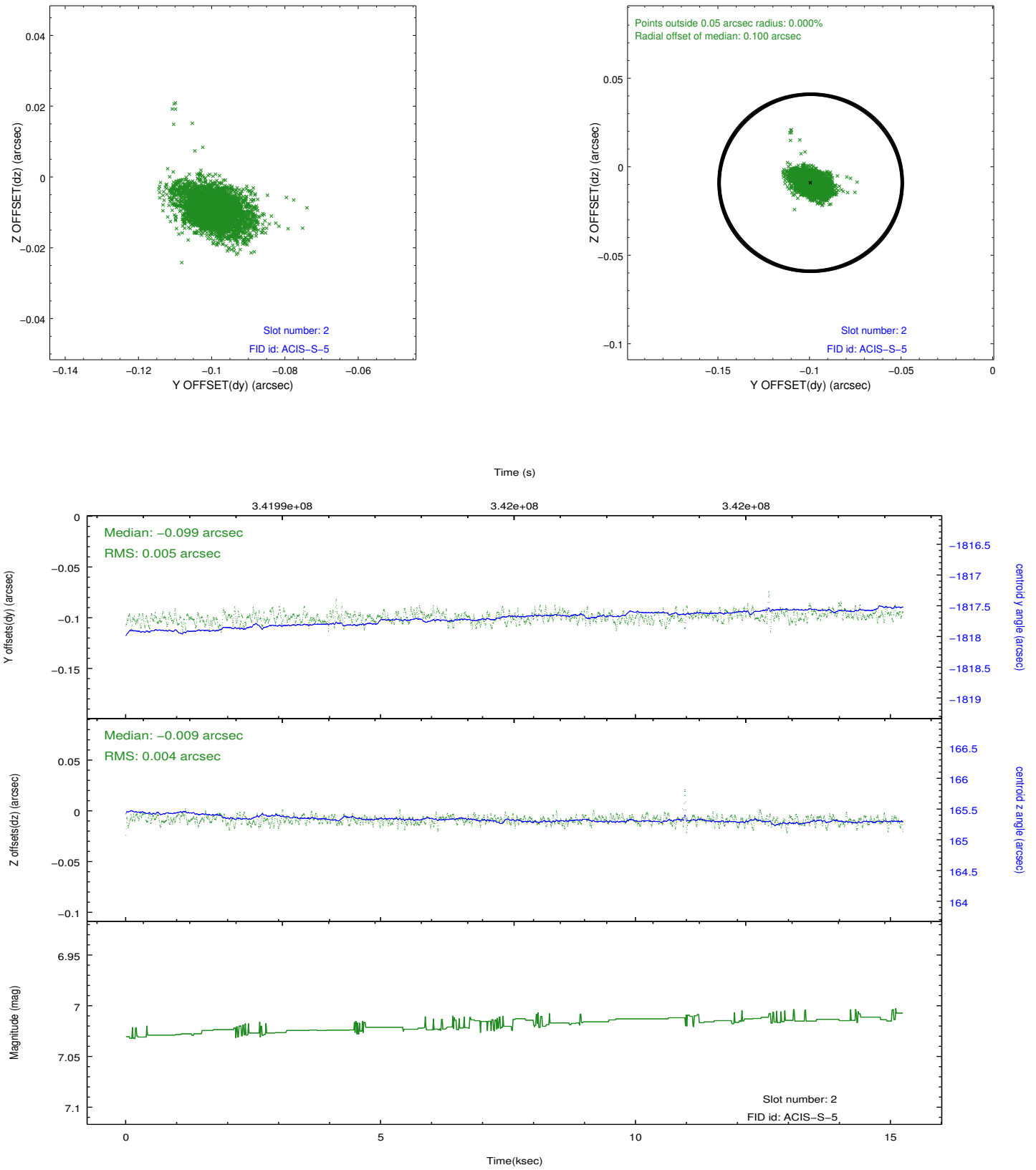
2.5.1 Slot 0



2.5.2 Slot 1



2.5.3 Slot 2



A Summary

A.1 Status

V&V Scientist	Jen Lauer
V&V Date (YYYY-MM-DD)	2012.05.31
V&V Edition	1
V&V Disposition and Status	OK
V&V Charge Time	15.242

A.2 Comments