

# V&V Reference Report

## L2 ASCDS Version : 8.4.5

Observation 10729 - L2 Version 2  
Chandra X-Ray Center

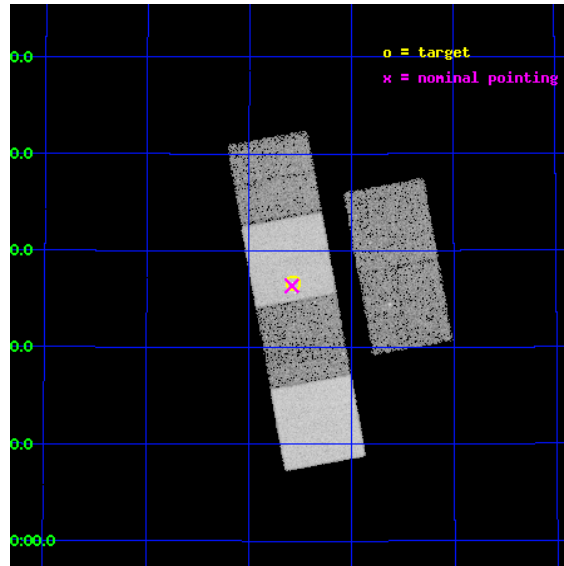
L2 Processing Date : Jun 9 2012

## Contents

<b>1</b>	<b>Front</b>	<b>2</b>
<b>2</b>	<b>OBI</b>	<b>3</b>
2.1	OBI . . . . .	3
2.1.1	Images . . . . .	3
2.1.2	Bias . . . . .	3
2.1.3	Parameters . . . . .	4
2.1.4	Events . . . . .	4
2.2	Compared Parameters . . . . .	5
2.3	Aspect . . . . .	6
2.4	Star Slots . . . . .	9
2.4.1	Slot 3 . . . . .	9
2.4.2	Slot 4 . . . . .	10
2.4.3	Slot 5 . . . . .	11
2.4.4	Slot 6 . . . . .	12
2.4.5	Slot 7 . . . . .	13
2.5	FID Slots . . . . .	14
2.5.1	Slot 0 . . . . .	14
2.5.2	Slot 1 . . . . .	15
2.5.3	Slot 2 . . . . .	16
<b>A</b>	<b>Summary</b>	<b>17</b>
A.1	Status . . . . .	17
A.2	Comments . . . . .	17

# 1 Front

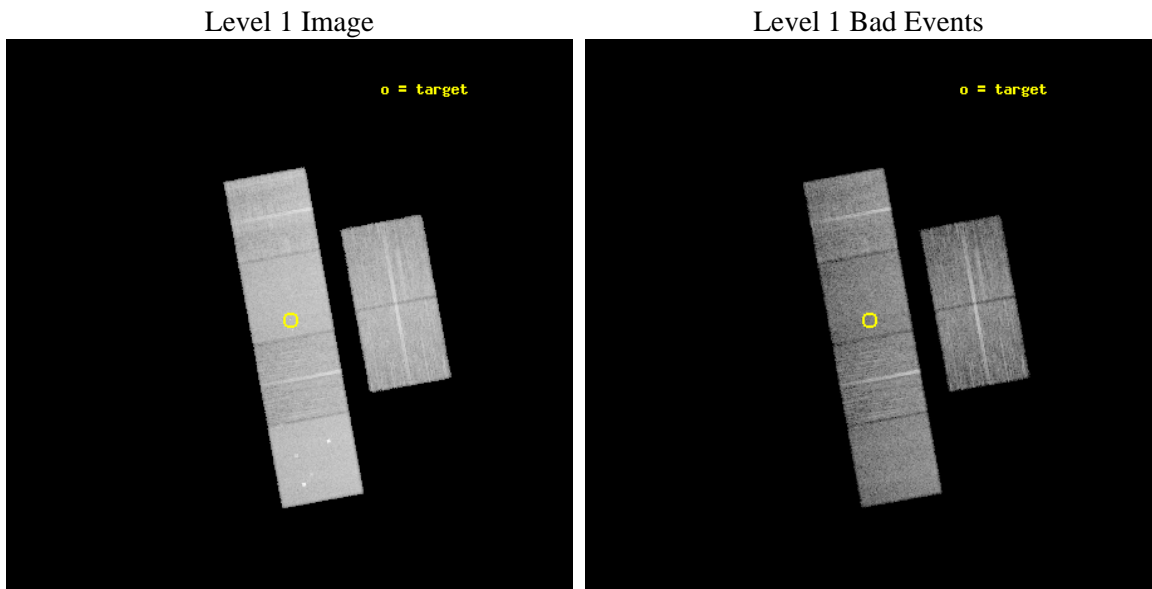
seq_num	701959	Sequence number
obs_id	10729	Observation id
title	Flaring galaxies with strong emission-line light echo	Proposal tit
observer	Dr. Peter Predehl	Principal investigator
object	SDSSJ124134.25+442639.2	Source name
dtcycle	0	&#160
cycle	P	events from which exps? Prim/Second/Both
ra_targ	190.392917	Observer's specified target RA [deg]
dec_targ	44.444222	Observer's specified target Dec [deg]
ra_nom	190.395431085	Nominal RA [deg]
dec_nom	44.439627031829	Nominal Dec [deg]
roll_nom	259.66069249476	Nominal Roll [deg]
revision	2	Processing version of data
ontime	9641.5999641418	Sum of GTIs [s]
livetime	9519.5122199214	Livetime [s]
ontime2	9638.3590934873	Sum of GTIs [s]
ontime3	9641.5999641418	Sum of GTIs [s]
ontime5	9641.5999641418	Sum of GTIs [s]
ontime6	9641.5999641418	Sum of GTIs [s]
ontime7	9641.5999641418	Sum of GTIs [s]
ontime8	9641.5999641418	Sum of GTIs [s]
l2events	172346	Number of level 2 events



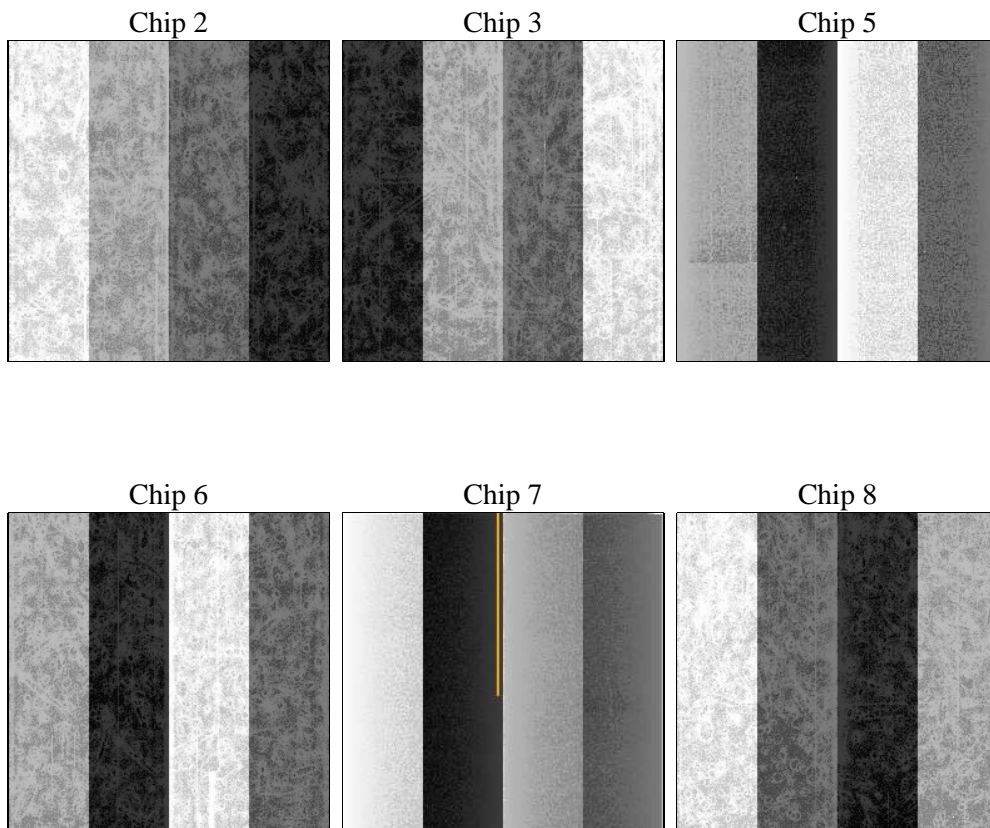
## 2 OBI

### 2.1 OBI

#### 2.1.1 Images



#### 2.1.2 Bias



### 2.1.3 Parameters

obi_num	1	Obi number	sched_exp_time	9500.000000	[s] Scheduled observation exposure time
ascdsver	8.4.5	Processing system revision	ontime	9641.5999641418	Sum of GTIs [s]
caldsver	4.4.10	&#160	ontime2	9638.3590934873	Sum of GTIs [s]
date	2012-06-09T23:12:26	Date and time of file creation	ontime3	9641.5999641418	Sum of GTIs [s]
revision	2	Processing version of data	ontime5	9641.5999641418	Sum of GTIs [s]
			ontime6	9641.5999641418	Sum of GTIs [s]
			ontime7	9641.5999641418	Sum of GTIs [s]
			ontime8	9641.5999641418	Sum of GTIs [s]
			l1events	783431	Number of level 1 events

### 2.1.4 Events

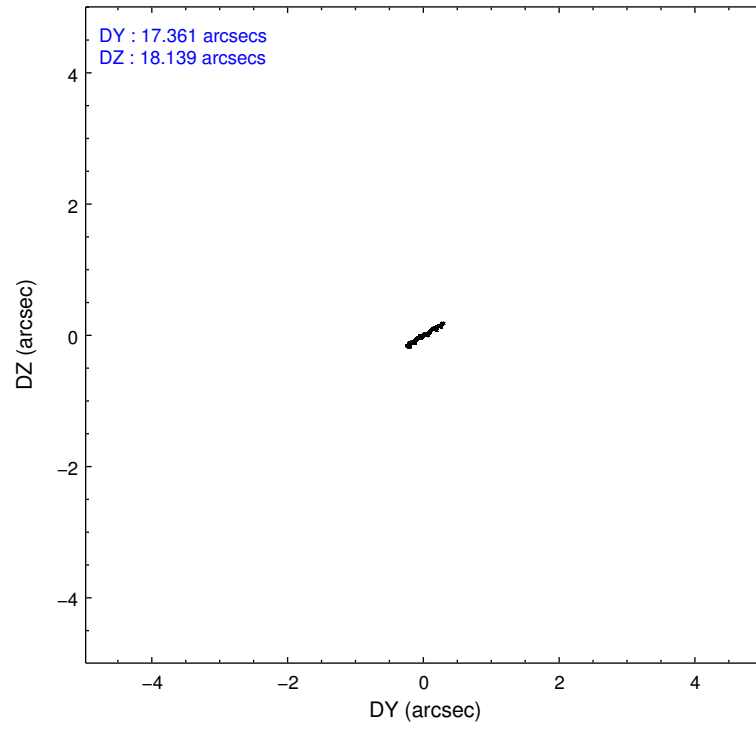
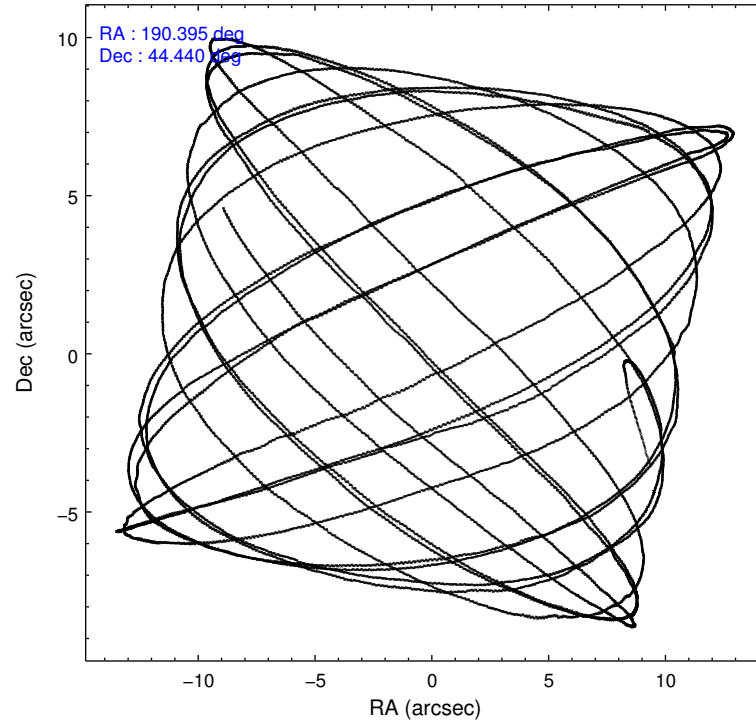
	ccd 2	ccd 3	ccd 5	ccd 6	ccd 7	ccd 8		ccd 2	ccd 3	ccd 5	ccd 6	ccd 7	ccd 8
level 1 events	110165	103029	169161	111062	151123	138891	grade 0 events	5798	5626	7524	5288	5495	10071
rejected events	97464	90832	95435	98467	91610	108107		5%	5%	4%	4%	3%	7%
rejected %	88%	88%	56%	88%	60%	77%	grade 1 events	82	77	262	64	174	119
								0%	0%	0%	0%	0%	0%
							grade 2 events	2910	2631	24420	3030	13232	7277
								2%	2%	14%	2%	8%	5%
							grade 3 events	1234	1181	2809	1208	5336	3403
								1%	1%	1%	1%	3%	2%
							grade 4 events	1275	1202	2740	1189	5255	3127
								1%	1%	1%	1%	3%	2%
							grade 5 events	4628	5156	12001	5208	14227	6959
								4%	5%	7%	4%	9%	5%
							grade 6 events	2268	2303	40935	2699	34018	8472
								2%	2%	24%	2%	22%	6%
							grade 7 events	91970	84853	78470	92376	73386	99463
								83%	82%	46%	83%	48%	71%

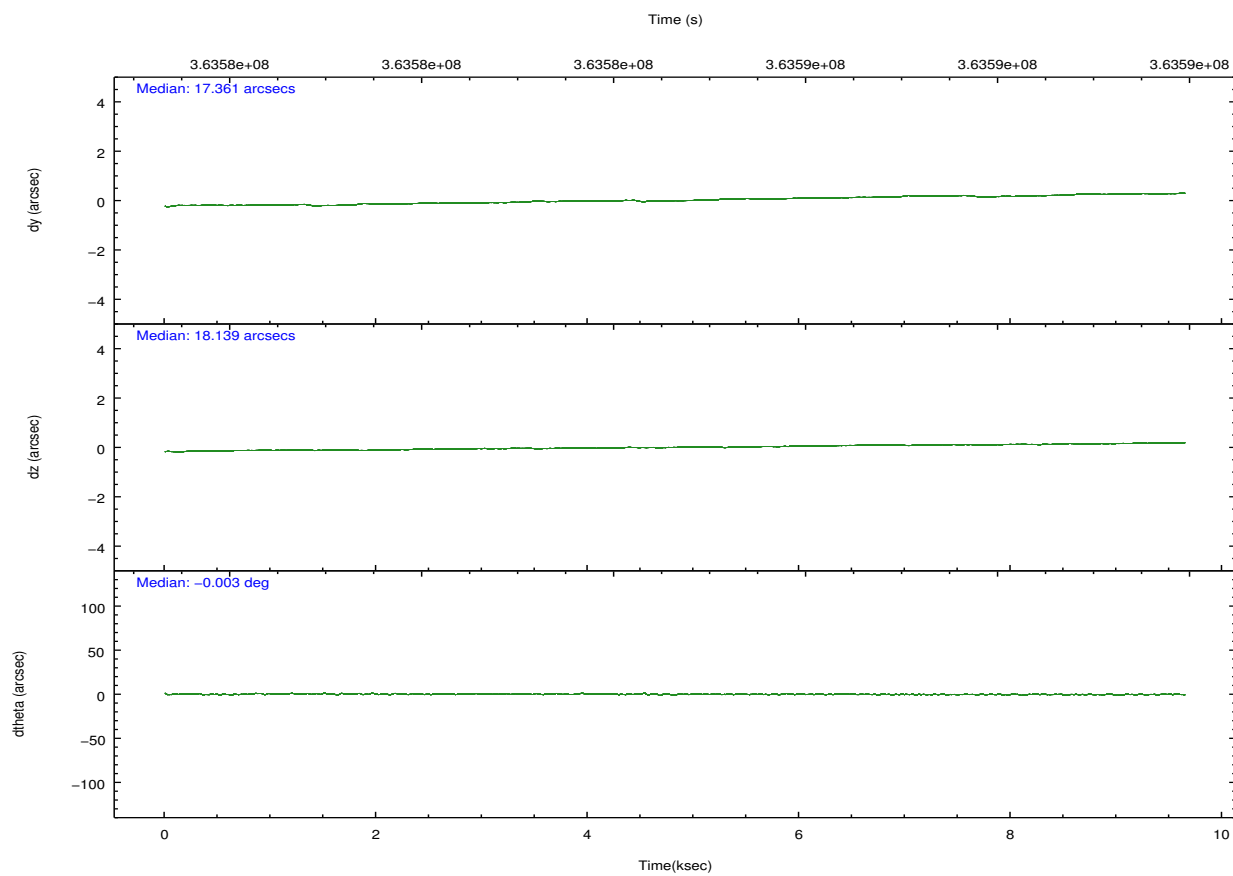
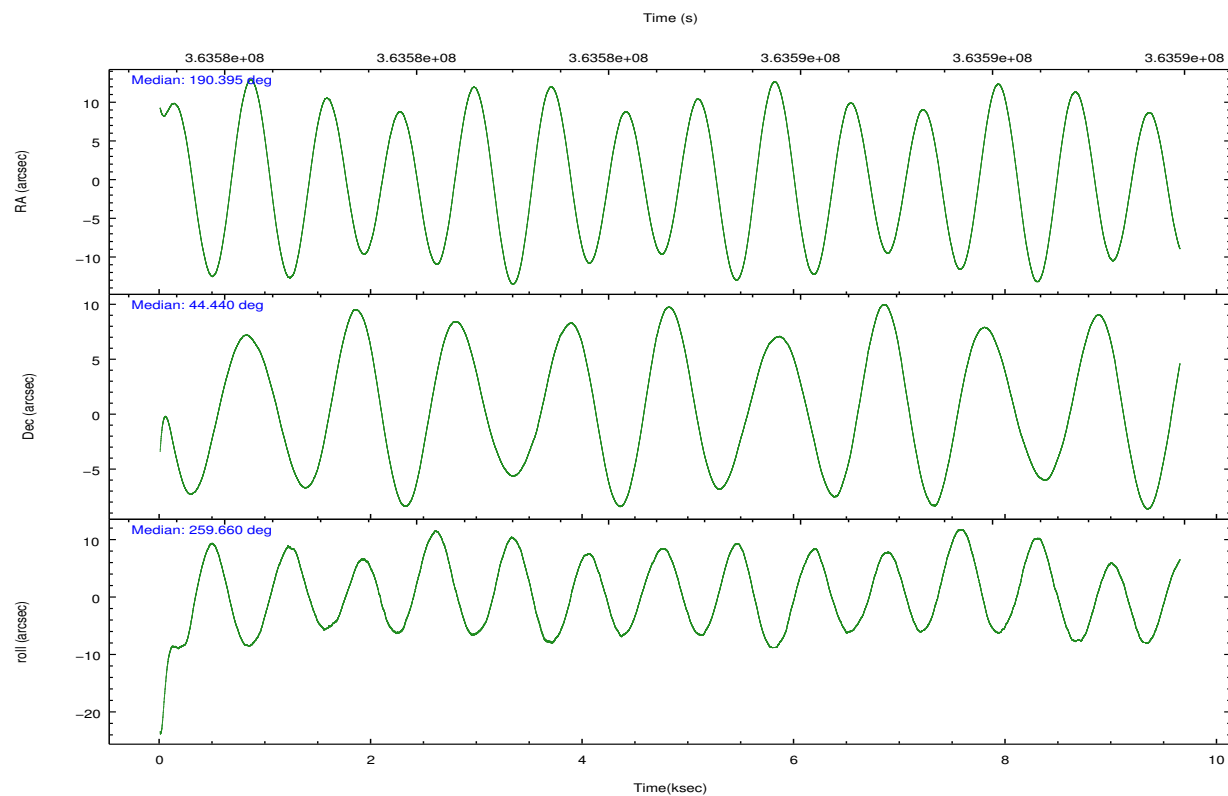


## 2.2 Compared Parameters

Parameter	Planned	Actual	Parameter	Planned	Actual
Instrument	ACIS	ACIS	Obspar format version number	7	7
Detector	ACIS-235678	ACIS-235678	Obspar file type	PREDICTED	ACTUAL
Grating	NONE	NONE	Obspar update status	NONE	UPDATED
Data mode	FAINT	FAINT	CCD I0 on	N	N
Observation mode	POINTING	POINTING	CCD I1 on	N	N
[deg] Pointing RA	190.382010	190.3954310849971	CCD I2 on	O2	Y
[deg] Pointing Dec	44.465320	44.43962703182882	CCD I3 on	O3	Y
[deg] Pointing Roll	259.513488	259.660692494761	CCD S0 on	N	N
[mm] SIM focus pos	-0.684267	-0.6828225247311905	CCD S1 on	O1	Y
[mm] SIM defocus	0	0.001444936568705701	CCD S2 on	O4	Y
[mm] SIM translation stage pos	-190.132523	-190.1400660498719	CCD S3 on	Y	Y
[mm] SIM translation stage offset	0	0.00754346686406393	CCD S4 on	O5	Y
[s] Observation start time (MET)	363579963.184000	363578603.56443	CCD S5 on	N	N
Observation start date	2009-07-10T02:24:57	2009-07-10T02:03:23	Number of optional ACIS chips dropped	0	0
[s] Observation end time (MET)	363589463.184000	363589917.515	On-chip summing requested	N	N
Observation end date	2009-07-10T05:03:17	2009-07-10T05:11:57	Subarray requested	NONE	NONE
Read mode	TIMED	TIMED	Alternating exposures requested	N	N
			[s] Primary exposure time	0.000000	3.2

## 2.3 Aspect



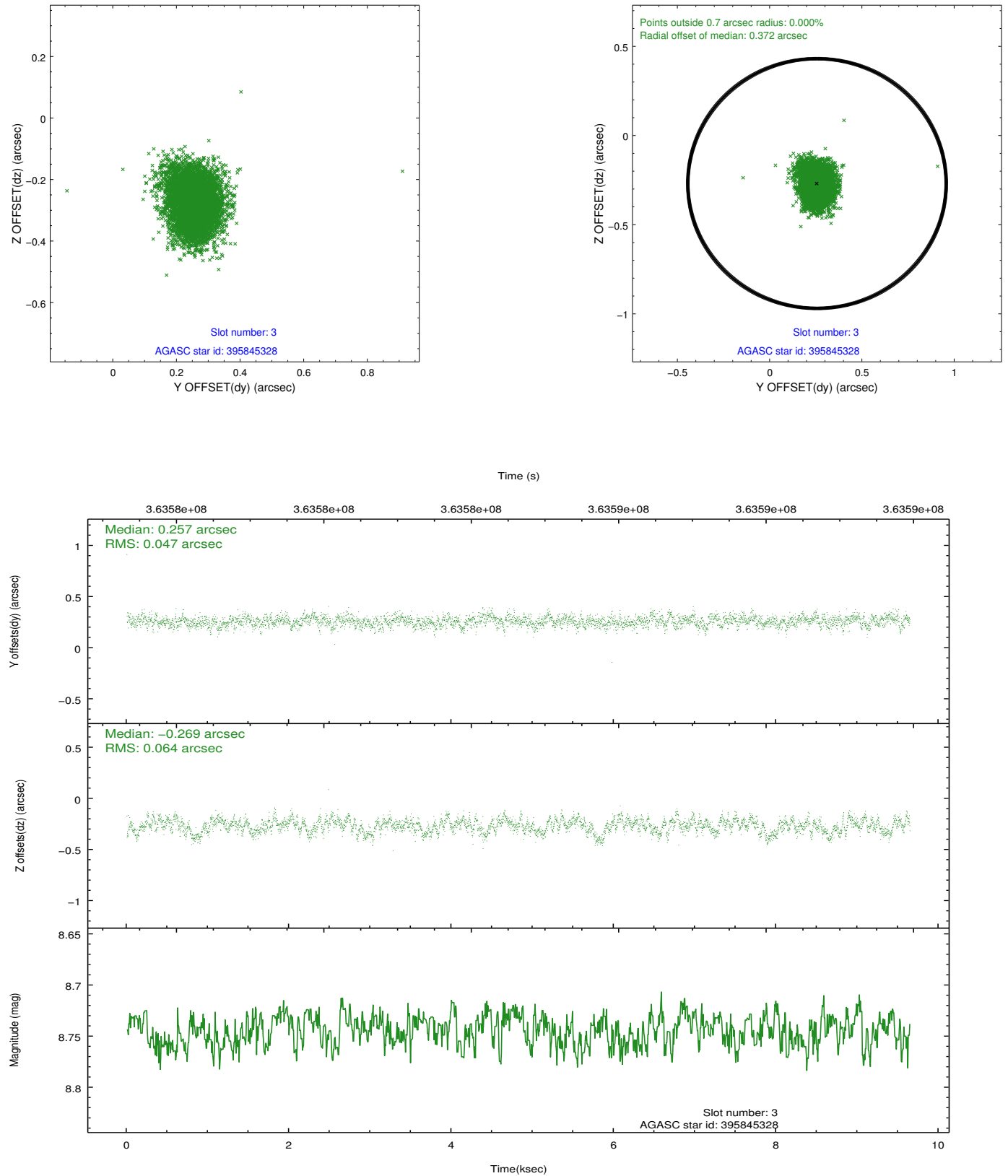


### Slot Statistics

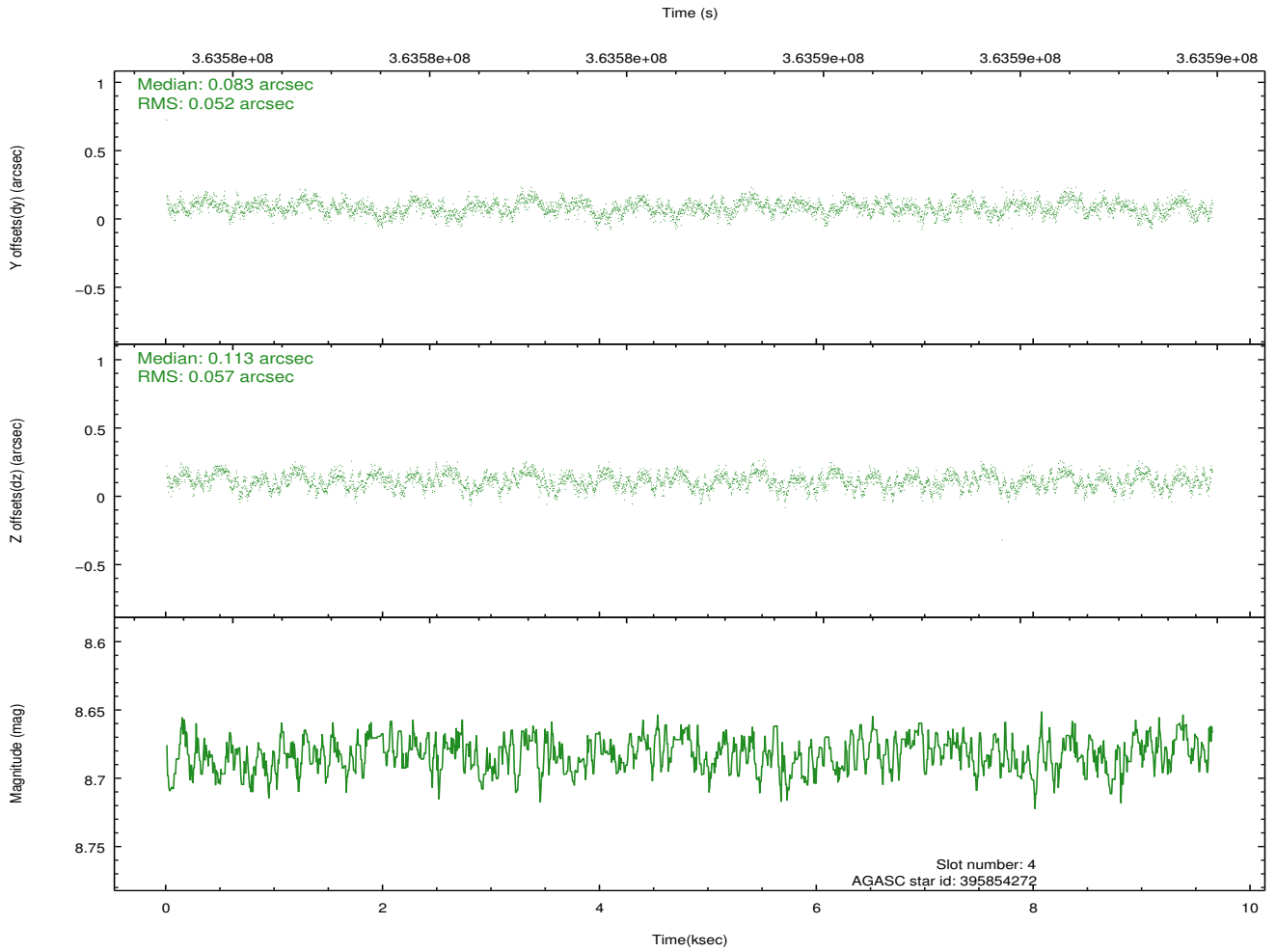
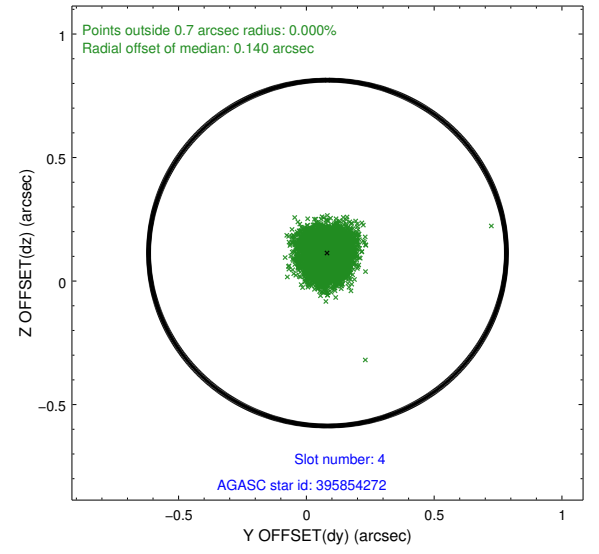
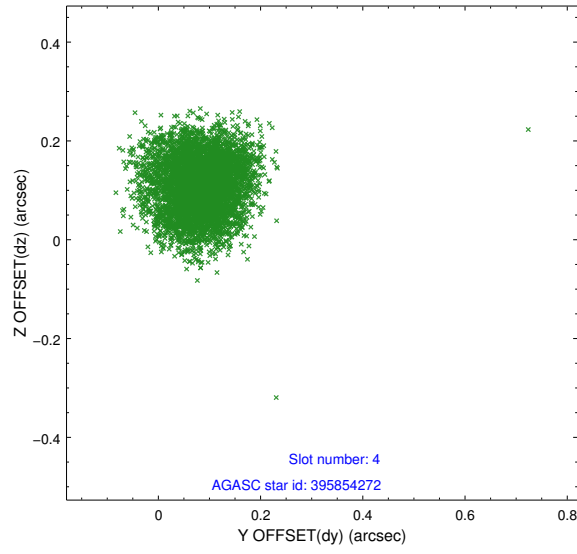
slot	status	id	mag	n_pts	med_dy	med_dz	dr1	dr2	ra	dec	mean_y	mean_z
0	FID	ACIS-S-2	6.89	2352	-0.055	-0.042	0.008	0.013	0.000000	0.000000	-770.51	-1739.63
1	FID	ACIS-S-4	6.97	2353	0.161	0.038	0.011	0.018	0.000000	0.000000	2142.77	168.29
2	FID	ACIS-S-5	7.00	2353	-0.138	0.013	0.010	0.017	0.000000	0.000000	-1822.68	162.65
3	GUIDE	395845328	8.74	4698	0.257	-0.269	0.083	0.135	189.604110	44.103880	1636.44	-1742.43
4	GUIDE	395854272	8.68	4704	0.083	0.113	0.082	0.126	189.938143	44.881977	-1271.19	-1387.28
5	GUIDE	396232272	9.56	4693	-0.031	0.163	0.111	0.179	190.902283	43.848147	1934.65	1731.77
6	GUIDE	396243096	9.25	4647	-0.087	0.090	0.115	0.188	191.219632	44.902513	-1946.69	1812.40
7	GUIDE	452985792	7.41	4705	-0.224	-0.092	0.068	0.108	189.636500	45.217095	-2325.70	-2354.14

## 2.4 Star Slots

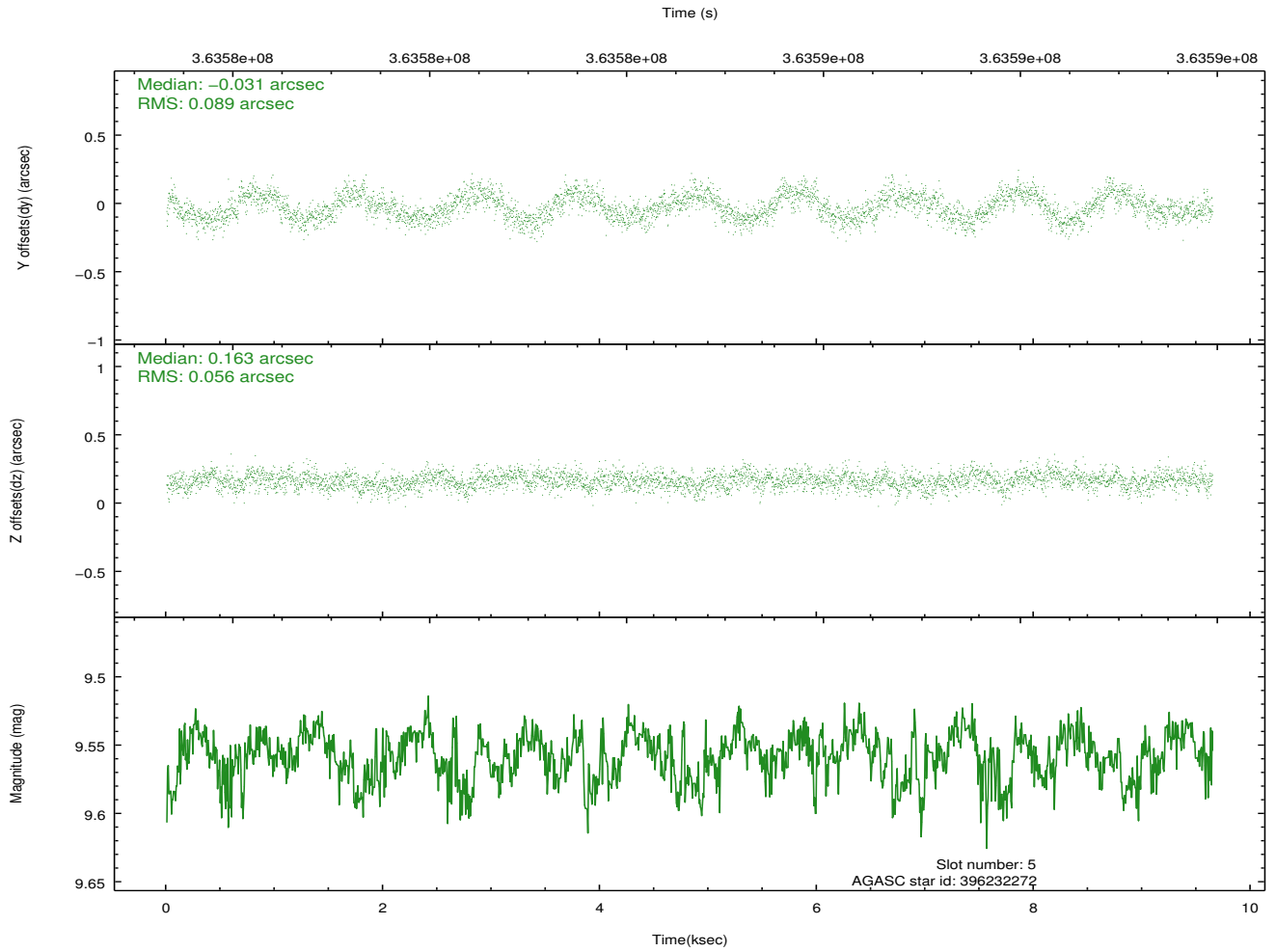
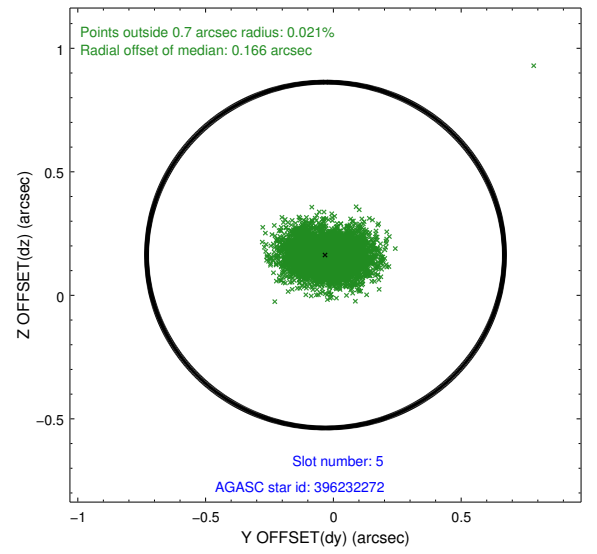
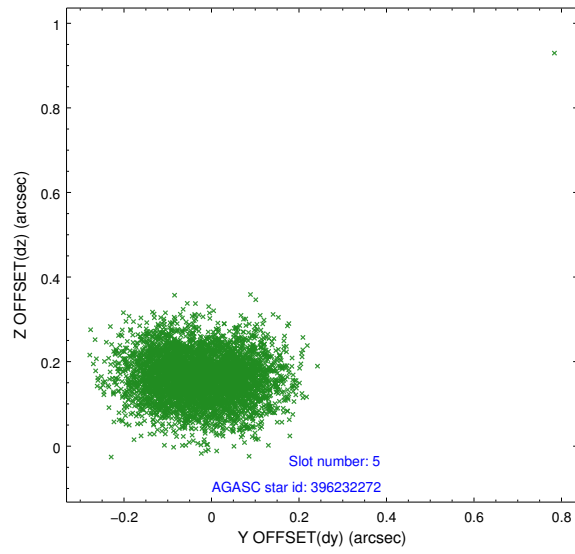
### 2.4.1 Slot 3



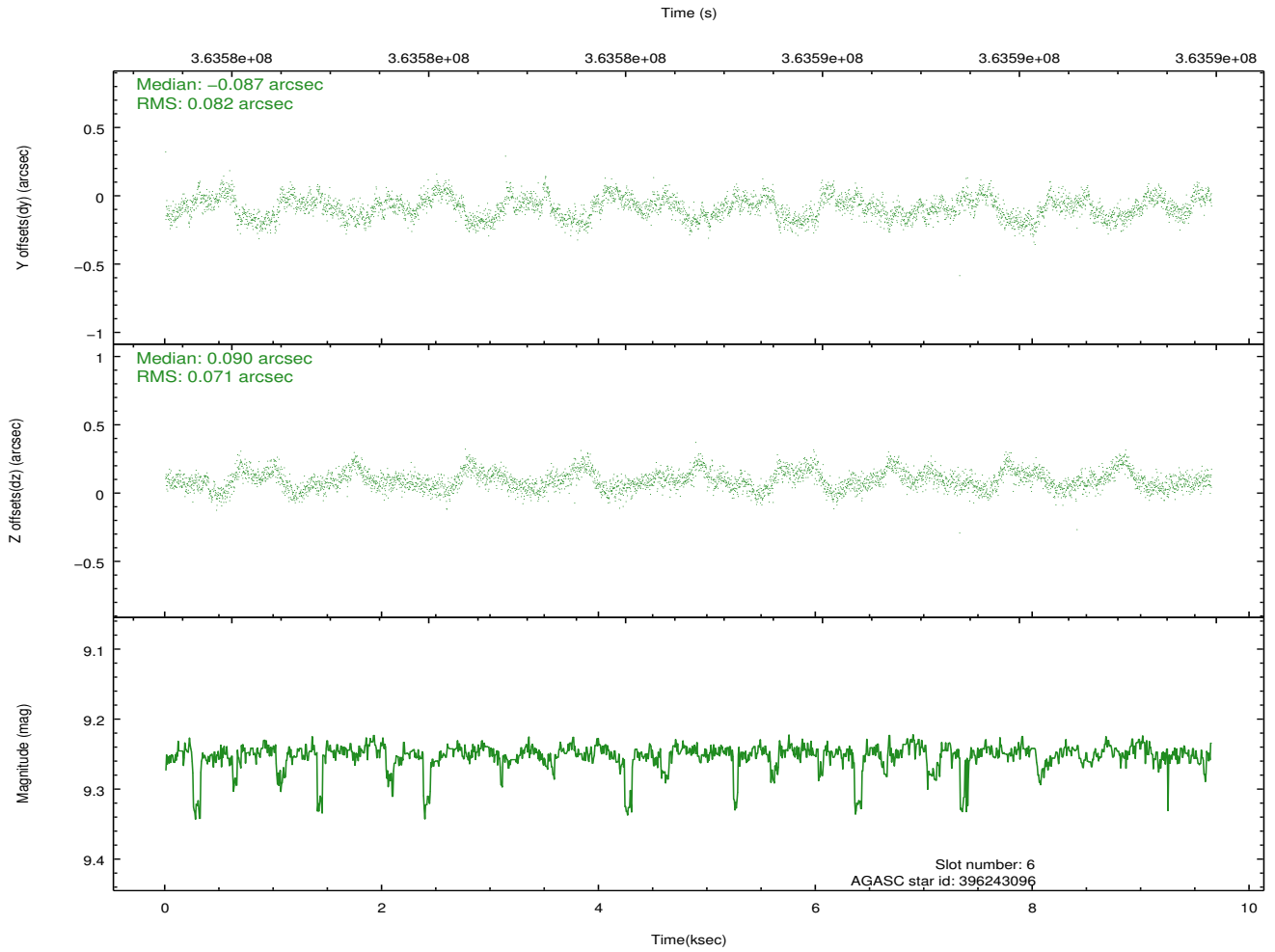
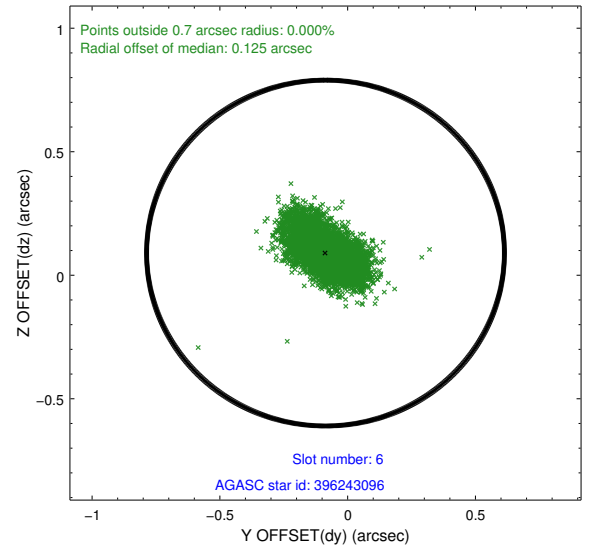
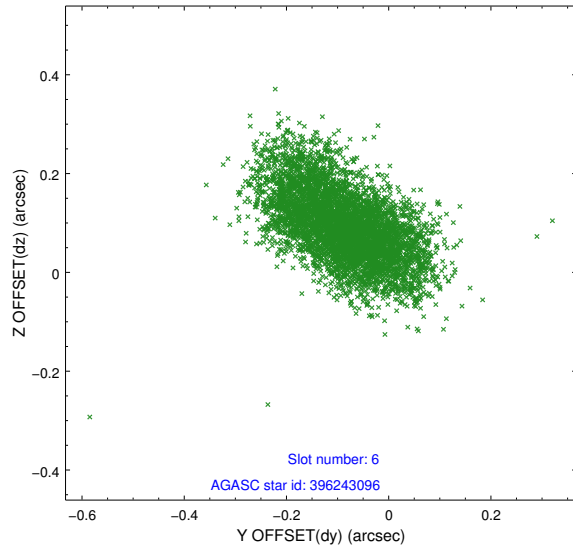
## 2.4.2 Slot 4



### 2.4.3 Slot 5

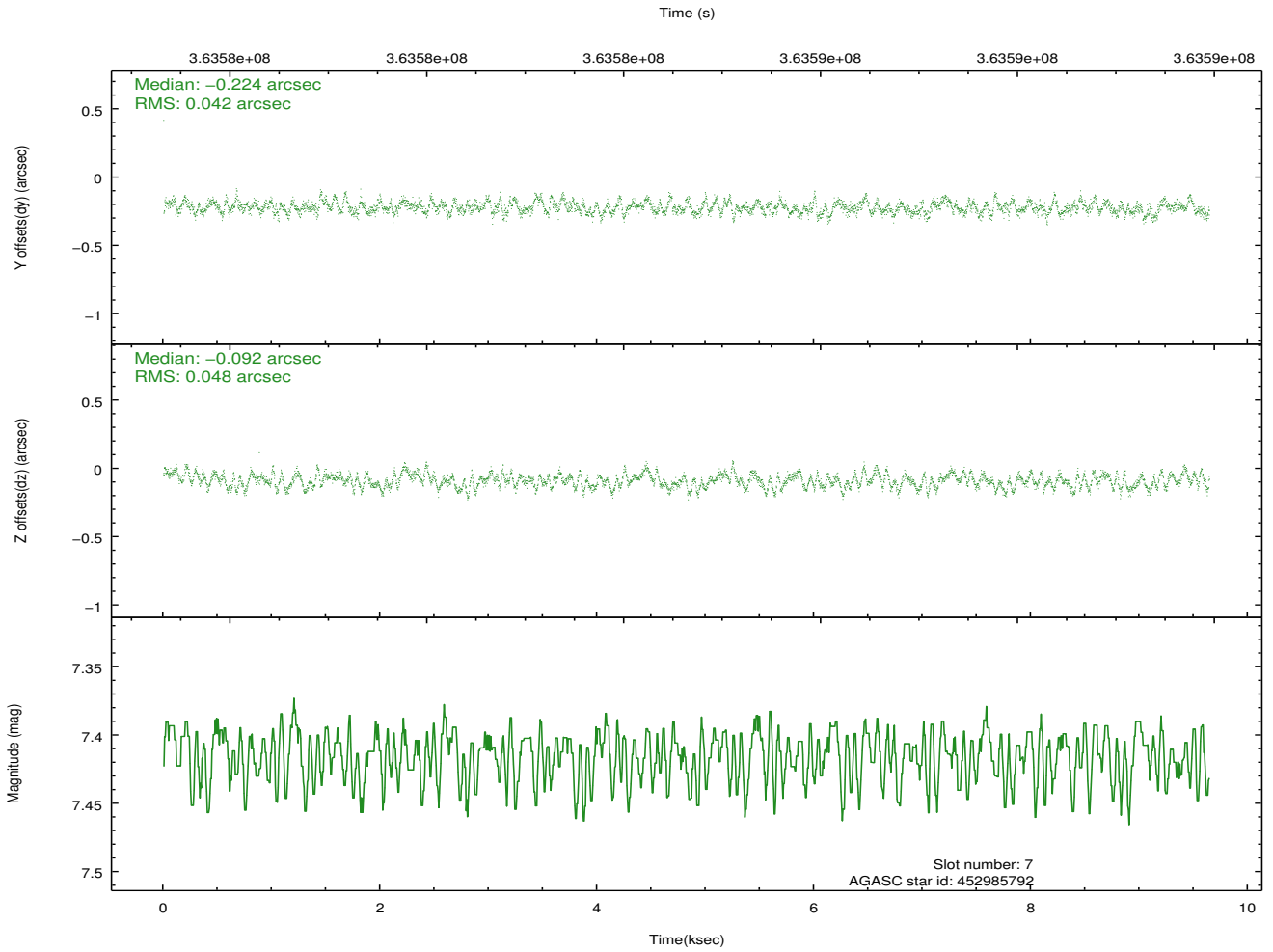
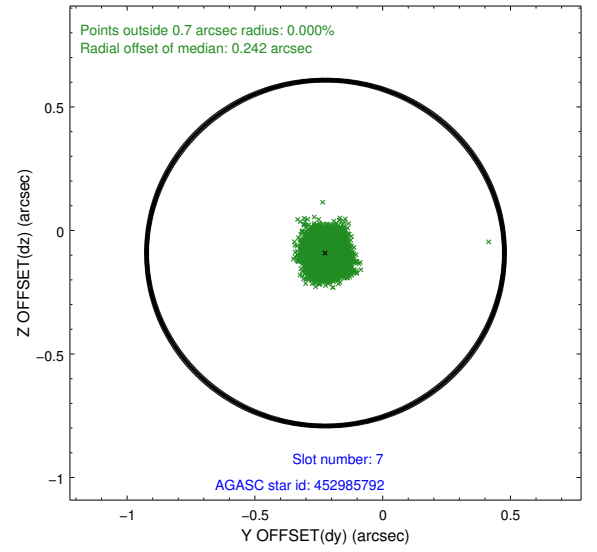
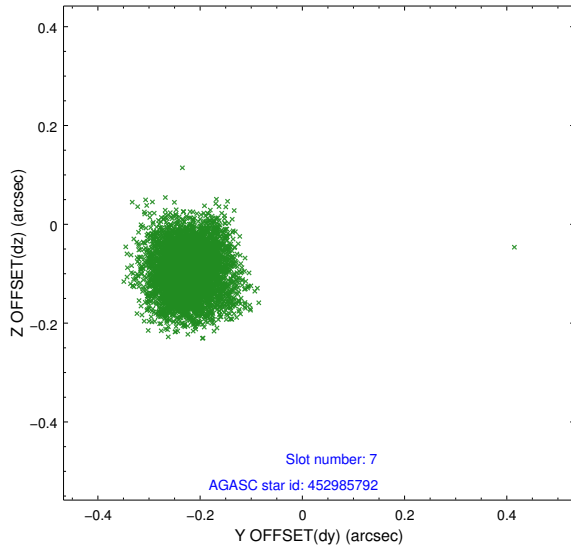


## 2.4.4 Slot 6



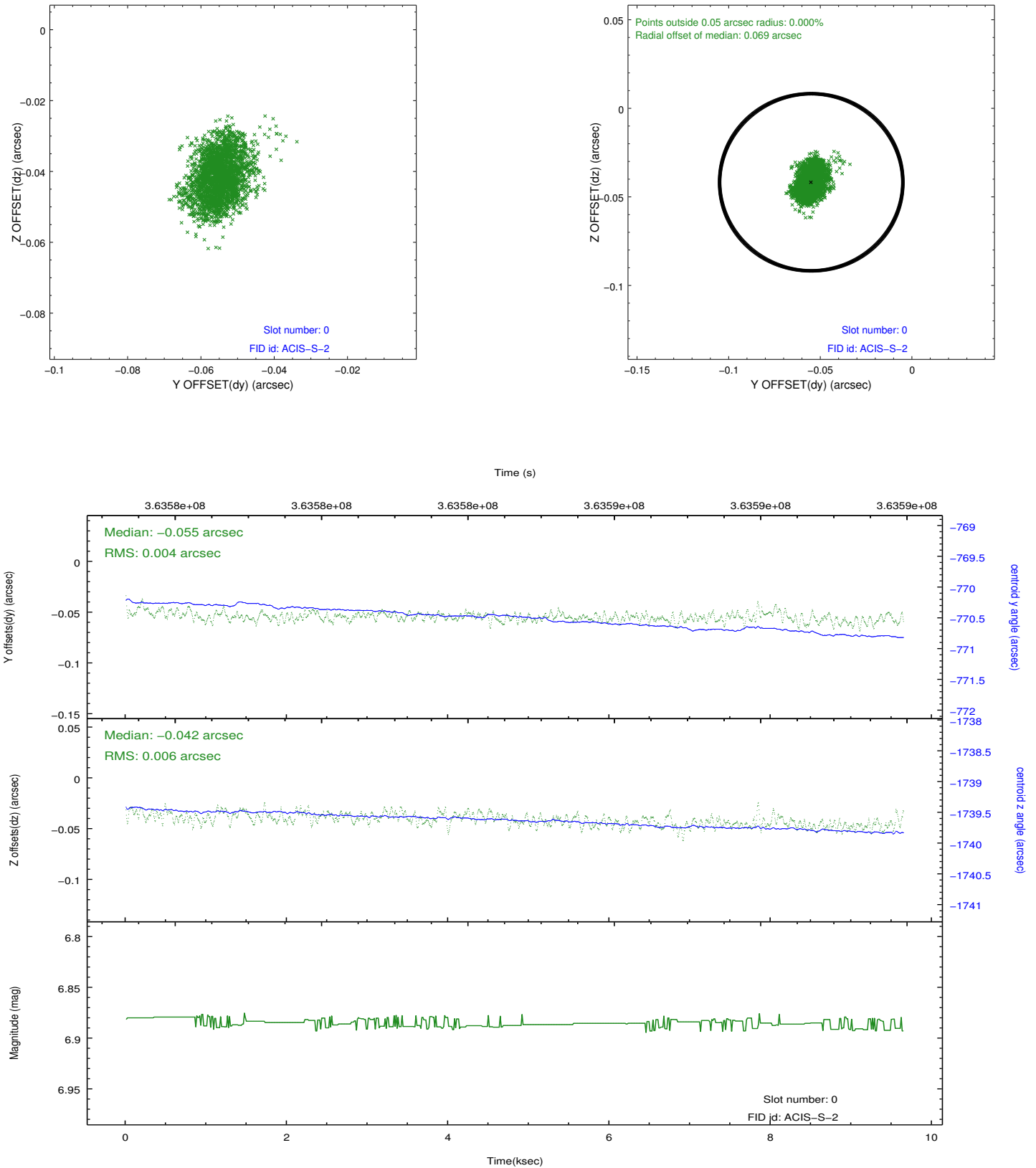


## 2.4.5 Slot 7

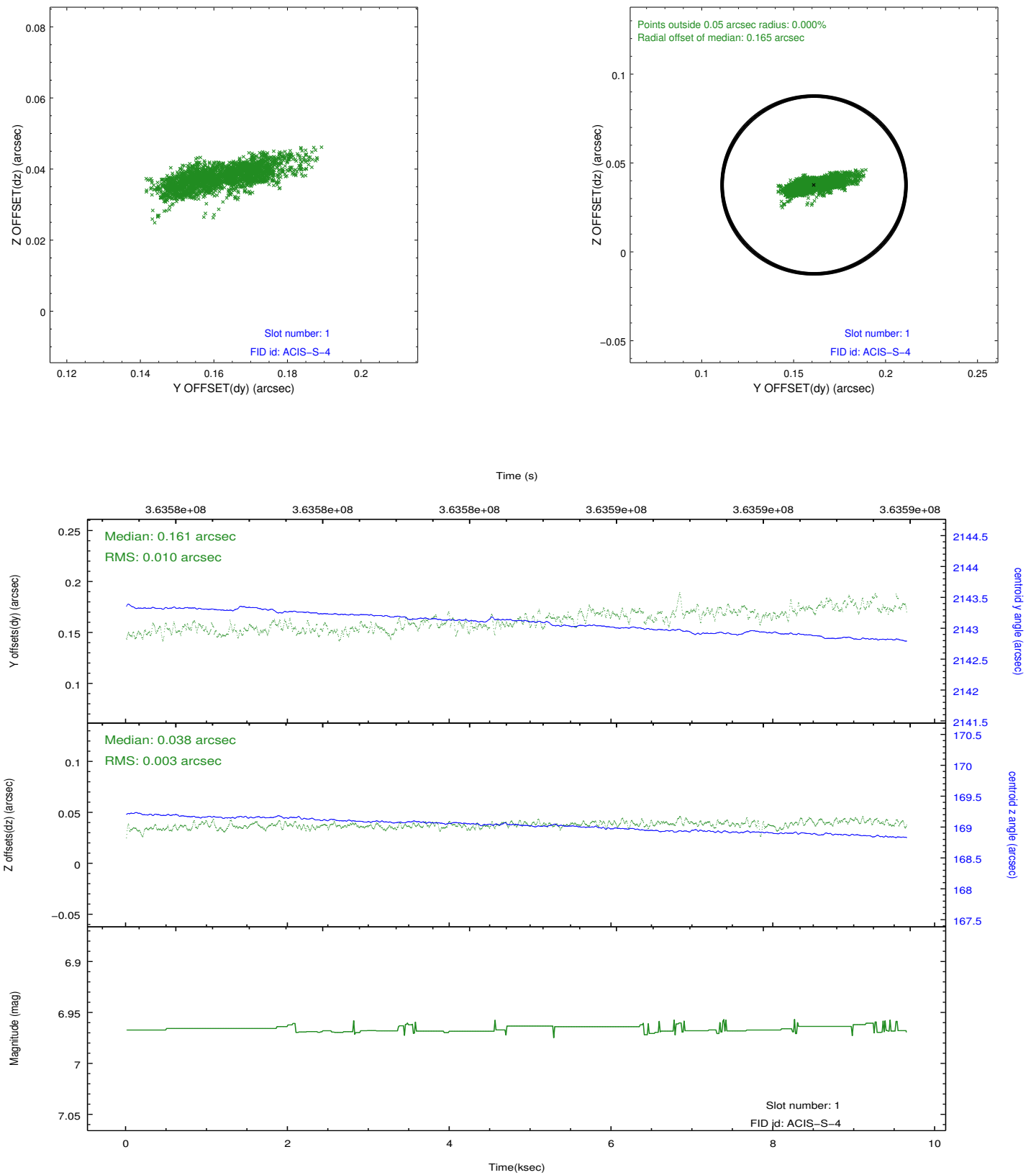


## 2.5 FID Slots

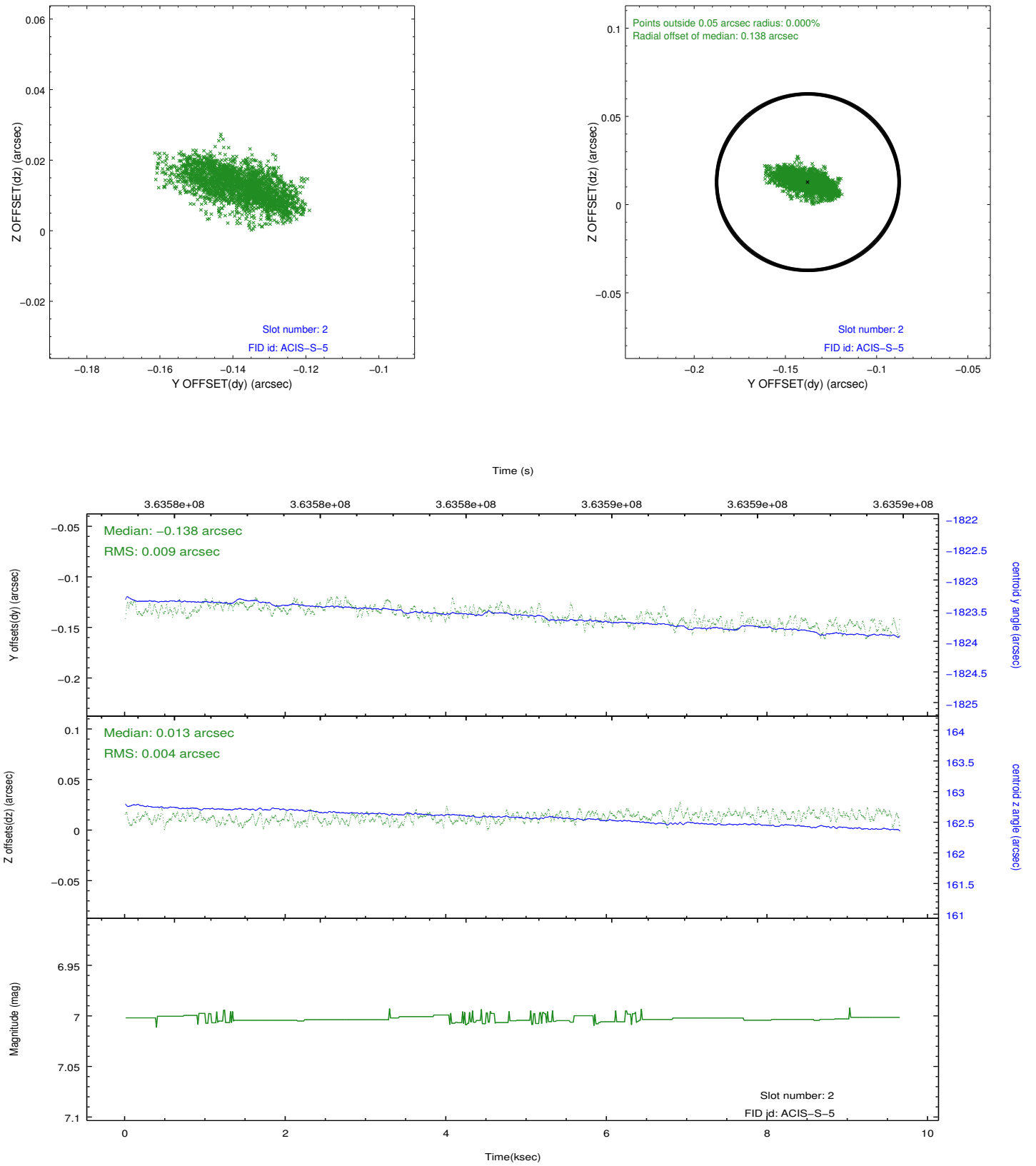
### 2.5.1 Slot 0



## 2.5.2 Slot 1



### 2.5.3 Slot 2



## A Summary

### A.1 Status

V&V Scientist	Jen Lauer
V&V Date (YYYY-MM-DD)	2012.06.13
V&V Edition	1
V&V Disposition and Status	OK
V&V Charge Time	9.64159996

### A.2 Comments