

# V&V Reference Report

## L2 ASCDS Version : 8.4.4

Observation 10385 - L2 Version 2  
Chandra X-Ray Center

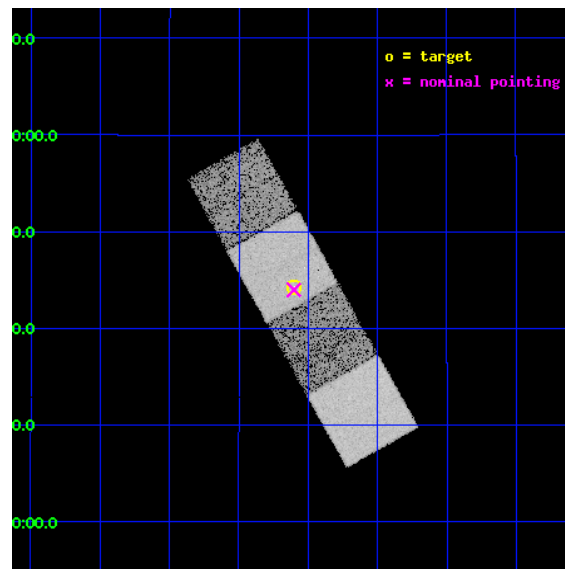
L2 Processing Date : Jun 3 2012

## Contents

<b>1</b>	<b>Front</b>	<b>2</b>
<b>2</b>	<b>OBI</b>	<b>3</b>
2.1	OBI . . . . .	3
2.1.1	Images . . . . .	3
2.1.2	Bias . . . . .	3
2.1.3	Parameters . . . . .	4
2.1.4	Events . . . . .	4
2.2	Compared Parameters . . . . .	5
2.3	Aspect . . . . .	6
2.4	Star Slots . . . . .	9
2.4.1	Slot 3 . . . . .	9
2.4.2	Slot 4 . . . . .	10
2.4.3	Slot 5 . . . . .	11
2.4.4	Slot 6 . . . . .	12
2.4.5	Slot 7 . . . . .	13
2.5	FID Slots . . . . .	14
2.5.1	Slot 0 . . . . .	14
2.5.2	Slot 1 . . . . .	15
2.5.3	Slot 2 . . . . .	16
<b>A</b>	<b>Summary</b>	<b>17</b>
A.1	Status . . . . .	17
A.2	Comments . . . . .	17

# 1 Front

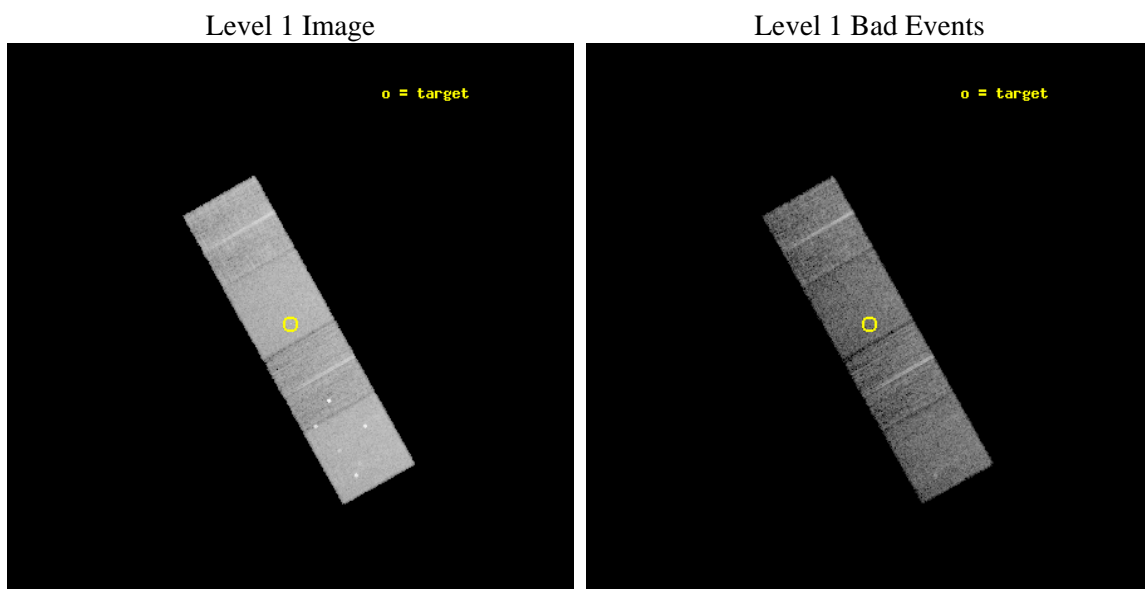
seq_num	701928	Sequence number
obs_id	10385	Observation id
title	Chandra survey of Polar Broad Absorption-Line Quasars	Proposal tit
observer	Dr. Kajal Ghosh	Principal investigator
object	SDSS J104106.05+144417.4	Source name
dtcycle	0	&#160
cycle	P	events from which exps? Prim/Second/Both
ra_targ	160.275417	Observer's specified target RA [deg]
dec_targ	14.738167	Observer's specified target Dec [deg]
ra_nom	160.27572164439	Nominal RA [deg]
dec_nom	14.733321852601	Nominal Dec [deg]
roll_nom	240.63336038022	Nominal Roll [deg]
revision	2	Processing version of data
ontime	6159.7000473738	Sum of GTIs [s]
livetime	6079.2190315496	Livetime [s]
ontime5	6159.7000473738	Sum of GTIs [s]
ontime6	6159.7000473738	Sum of GTIs [s]
ontime7	6159.7000473738	Sum of GTIs [s]
ontime8	6159.7000473738	Sum of GTIs [s]
l2events	96248	Number of level 2 events



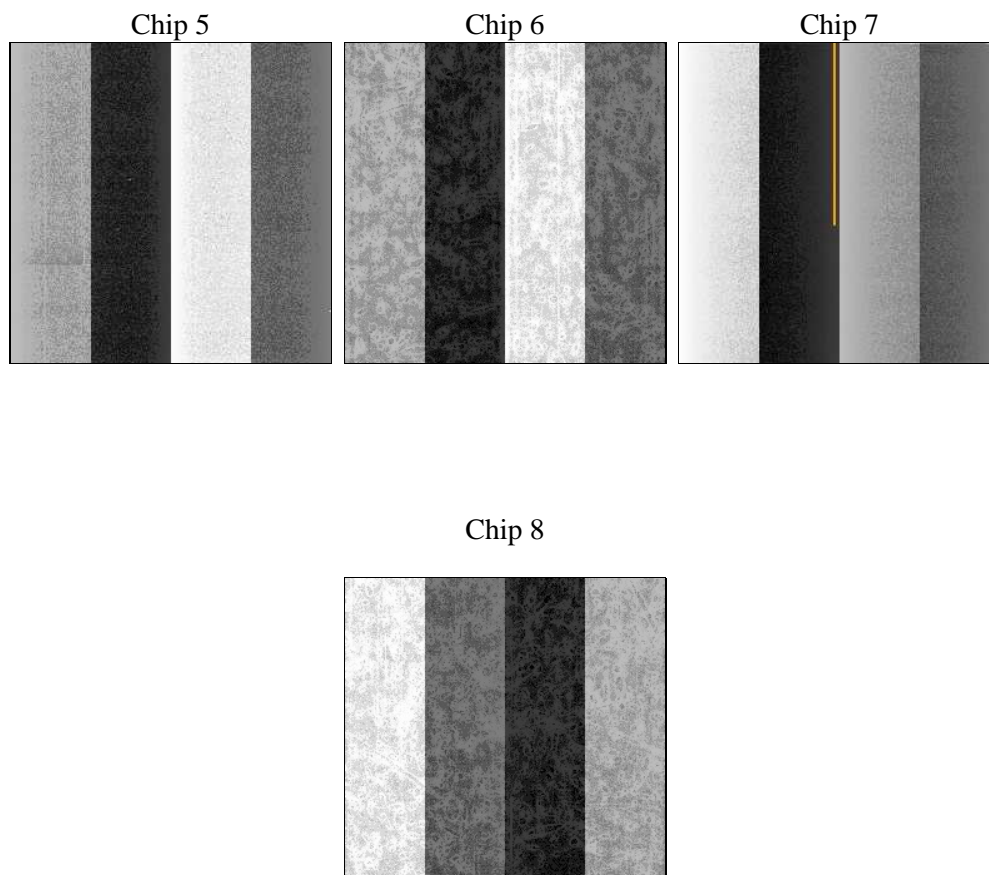
## 2 OBI

### 2.1 OBI

#### 2.1.1 Images



#### 2.1.2 Bias



### 2.1.3 Parameters

obi_num	0	Obi number	sched_exp_time	6000.000000	[s] Scheduled observation exposure time
ascdsver	8.4.4	Processing system revision	ontime	6159.7000473738	Sum of GTIs [s]
caldsver	4.4.9	&#160	ontime5	6159.7000473738	Sum of GTIs [s]
date	2012-06-03T22:00:31	Date and time of file creation	ontime6	6159.7000473738	Sum of GTIs [s]
revision	2	Processing version of data	ontime7	6159.7000473738	Sum of GTIs [s]
			ontime8	6159.7000473738	Sum of GTIs [s]
			l1events	405318	Number of level 1 events

### 2.1.4 Events

	ccd 5	ccd 6	ccd 7	ccd 8
level 1 events	121794	77852	107127	98545
rejected events	73385	67945	69212	79648
rejected %	60%	87%	64%	80%

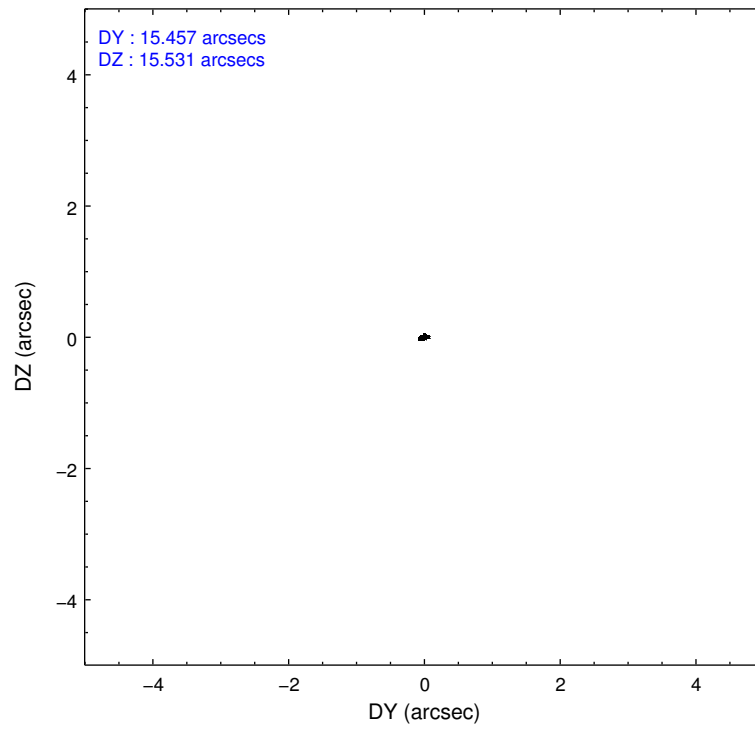
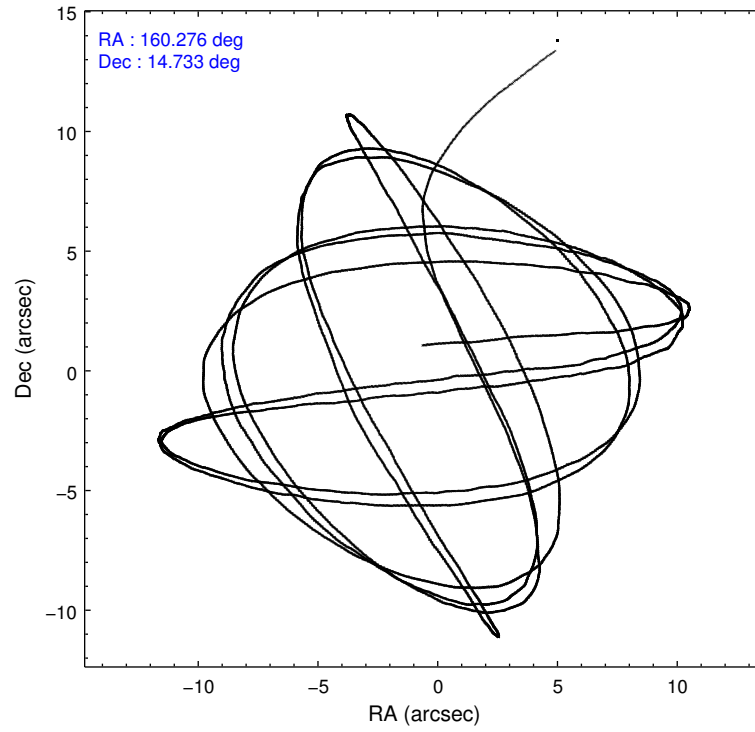
	ccd 5	ccd 6	ccd 7	ccd 8
grade 0 events	6116	5779	3870	7211
	5%	7%	3%	7%
grade 1 events	358	49	104	82
	0%	0%	0%	0%
grade 2 events	17713	2110	9174	5161
	14%	2%	8%	5%
grade 3 events	2004	919	3881	2273
	1%	1%	3%	2%
grade 4 events	1894	904	3801	2090
	1%	1%	3%	2%
grade 5 events	8580	3623	10053	5016
	7%	4%	9%	5%
grade 6 events	29283	1947	23739	5670
	24%	2%	22%	5%
grade 7 events	55846	62521	52505	71042
	45%	80%	49%	72%

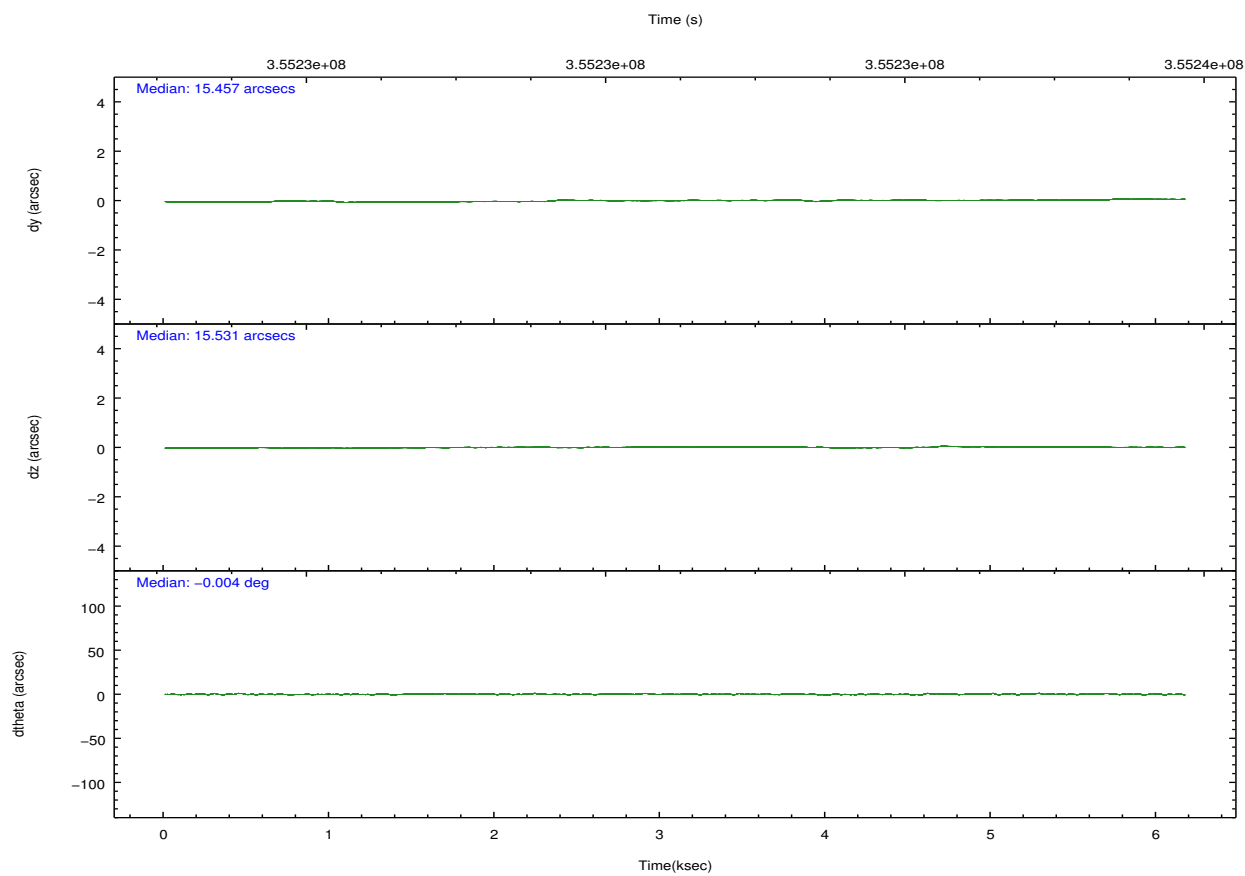
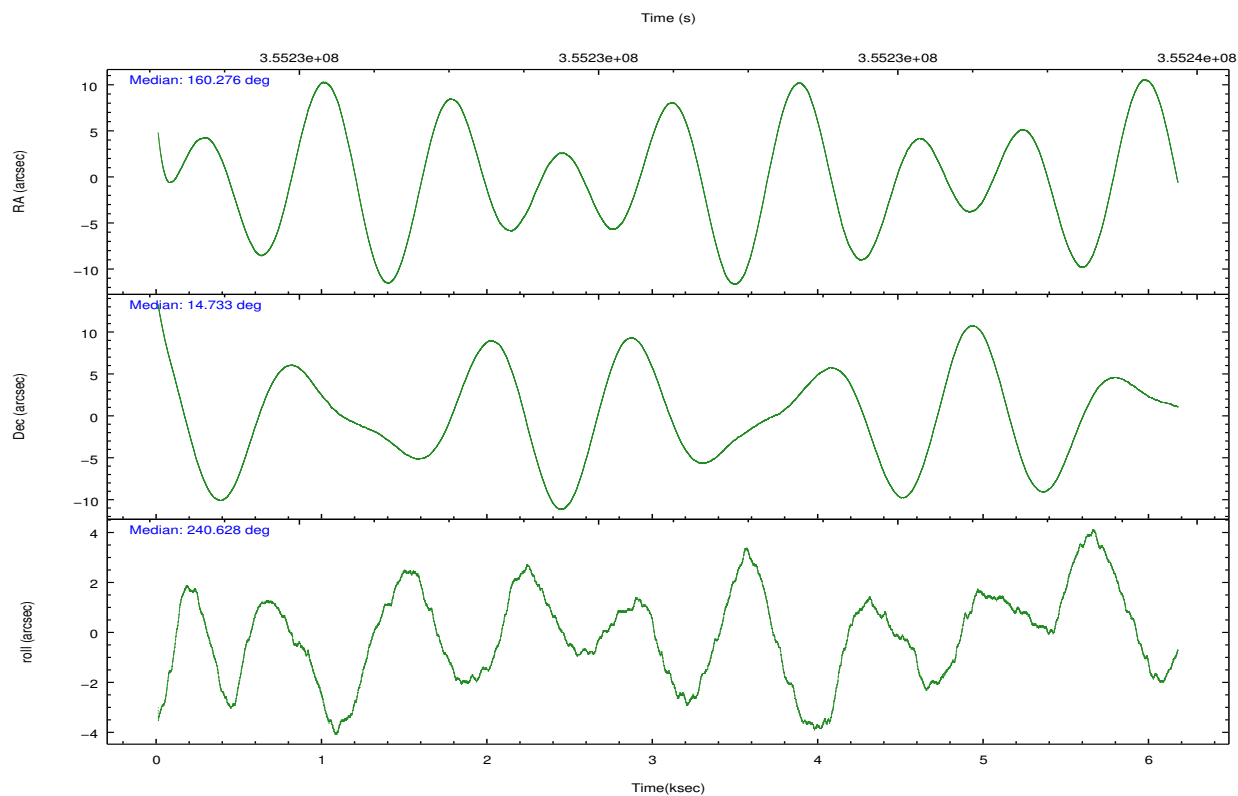


## 2.2 Compared Parameters

Parameter	Planned	Actual	Parameter	Planned	Actual
Instrument	ACIS	ACIS	Obspar format version number	7	7
Detector	ACIS-5678	ACIS-5678	Obspar file type	PREDICTED	ACTUAL
Grating	NONE	NONE	Obspar update status	NONE	UPDATED
Data mode	FAINT	FAINT	Number of optional ACIS chips dropped	0	0
Observation mode	POINTING	POINTING	On-chip summing requested	N	N
[deg] Pointing RA	160.274922	160.2757216443904	Subarray requested	NONE	NONE
[deg] Pointing Dec	14.760651	14.73332185260088	Alternating exposures requested	N	N
[deg] Pointing Roll	240.476930	240.6333603802224	[s] Primary exposure time	0.000000	3.1
[mm] SIM focus pos	-0.684267	-0.6828225247311905			
[mm] SIM defocus	0	0.001444936568705701			
[mm] SIM translation stage pos	-190.132523	-190.1400660498719			
[mm] SIM translation stage offset	0	0.00754346686406393			
[s] Observation start time (MET)	355229553.184000	355228089.07306			
Observation start date	2009-04-04T10:51:27	2009-04-04T10:28:09			
[s] Observation end time (MET)	355235553.184000	355236591.96099			
Observation end date	2009-04-04T12:31:27	2009-04-04T12:49:51			
Read mode	TIMED	TIMED			

## 2.3 Aspect



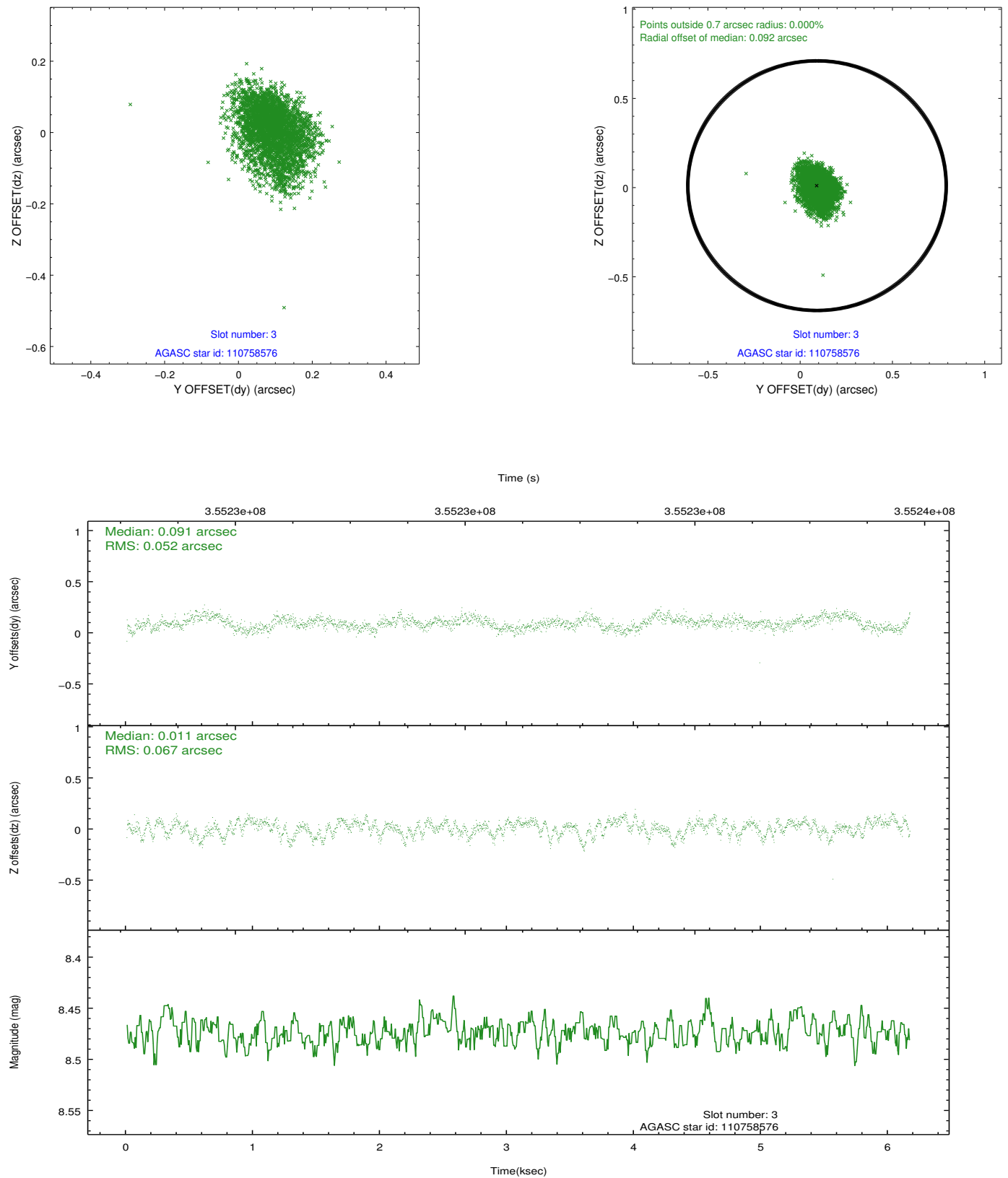


### Slot Statistics

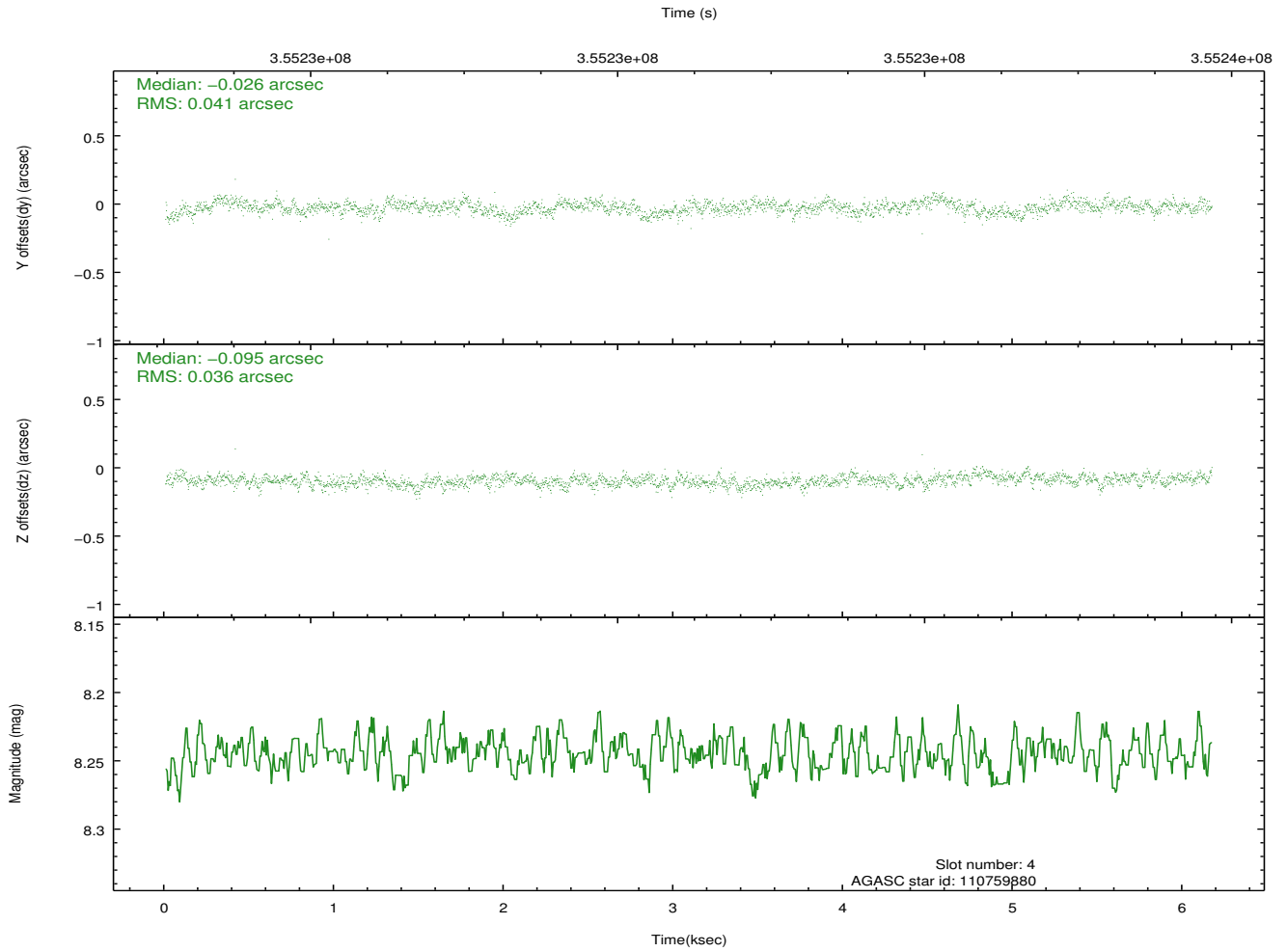
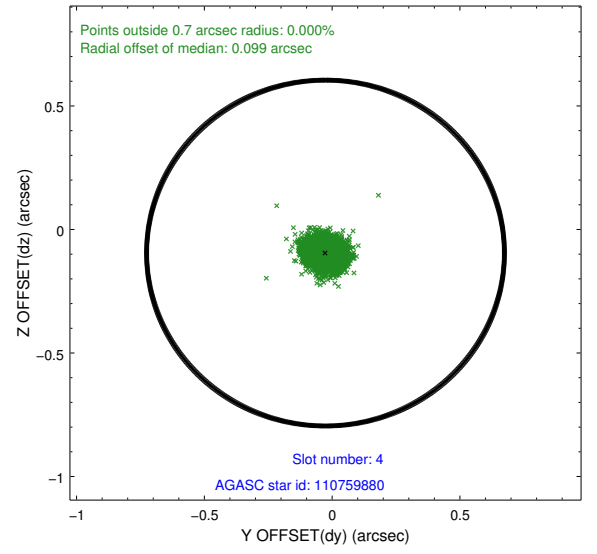
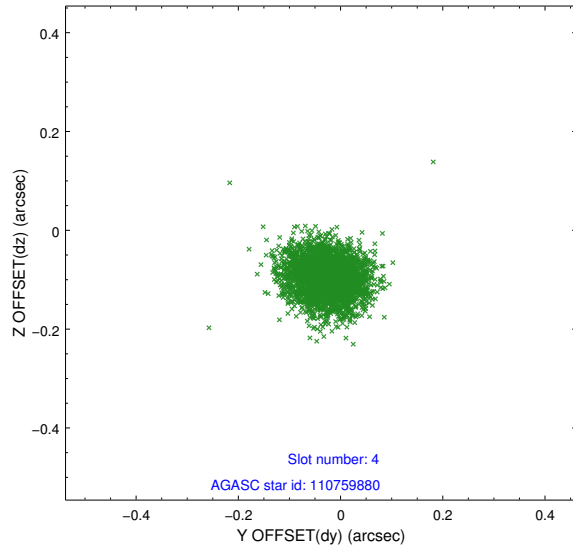
slot	status	id	mag	n_pts	med_dy	med_dz	dr1	dr2	ra	dec	mean_y	mean_z
0	FID	ACIS-S-2	6.94	1504	-0.100	-0.011	0.009	0.016	0.000000	0.000000	-768.51	-1736.94
1	FID	ACIS-S-4	7.02	1504	0.188	0.051	0.010	0.020	0.000000	0.000000	2144.59	170.63
2	FID	ACIS-S-5	7.05	1504	-0.118	-0.032	0.010	0.019	0.000000	0.000000	-1820.16	165.28
3	GUIDE	110758576	8.47	3007	0.091	0.011	0.089	0.147	160.105267	14.963453	-343.99	-873.39
4	GUIDE	110759880	8.25	3009	-0.026	-0.095	0.058	0.092	159.791817	14.732599	915.65	-1415.18
5	GUIDE	110762632	8.89	3008	0.171	0.103	0.080	0.126	160.462619	13.940868	2245.41	2024.45
6	GUIDE	110764800	6.79	3009	-0.189	-0.027	0.060	0.092	160.404841	13.978477	2227.36	1783.24
7	GUIDE	186253896	9.30	3006	-0.046	0.007	0.110	0.183	159.886349	15.331058	-1120.96	-2185.44

## 2.4 Star Slots

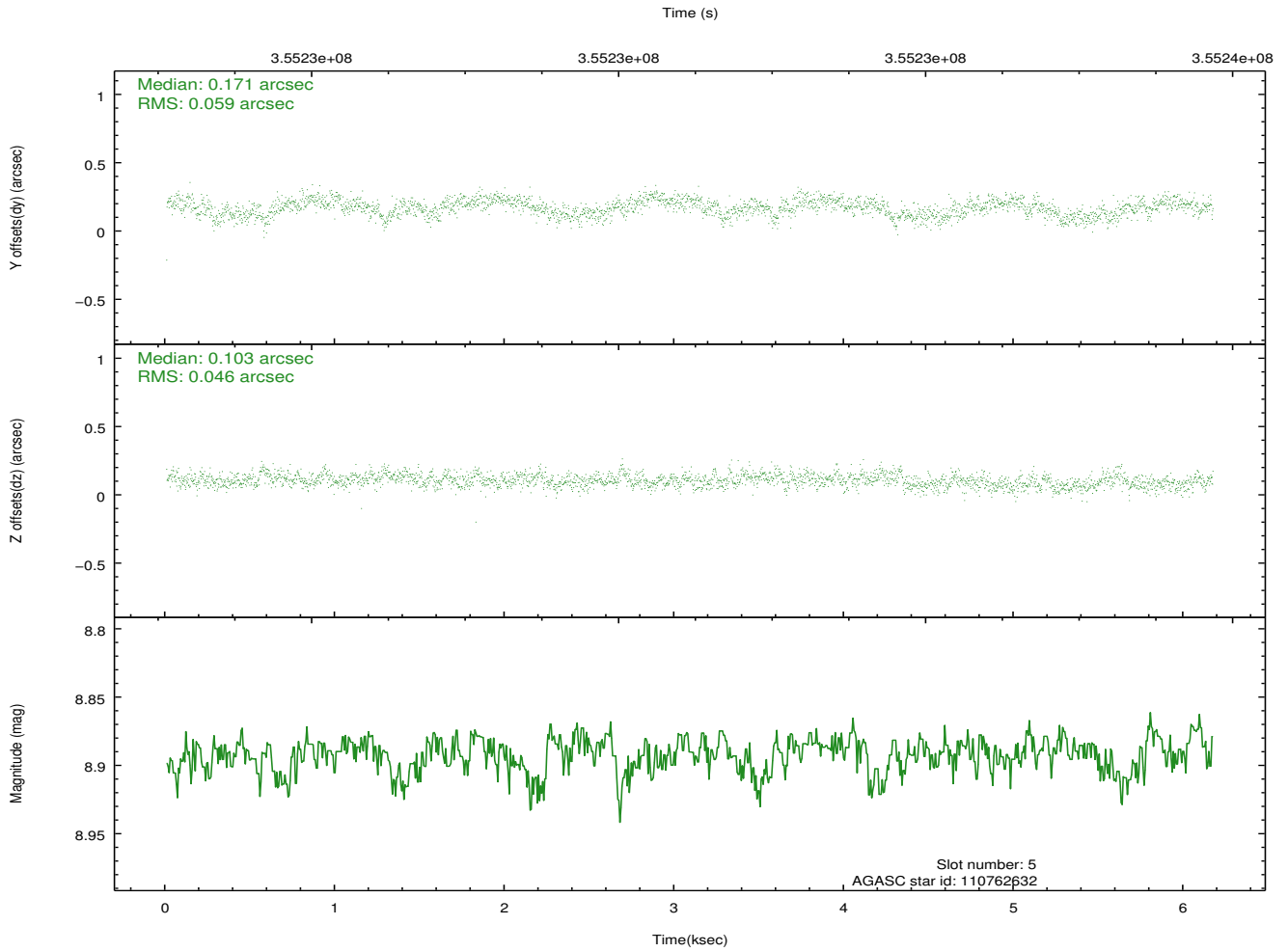
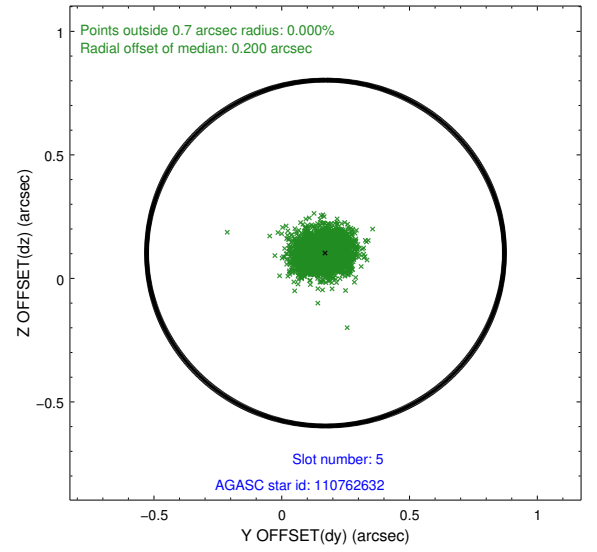
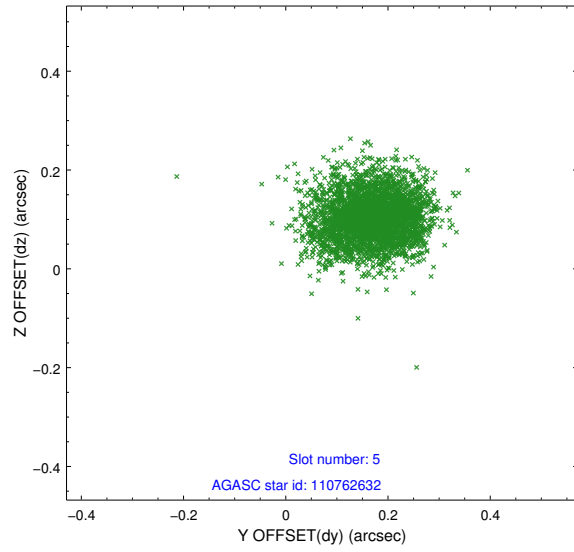
### 2.4.1 Slot 3



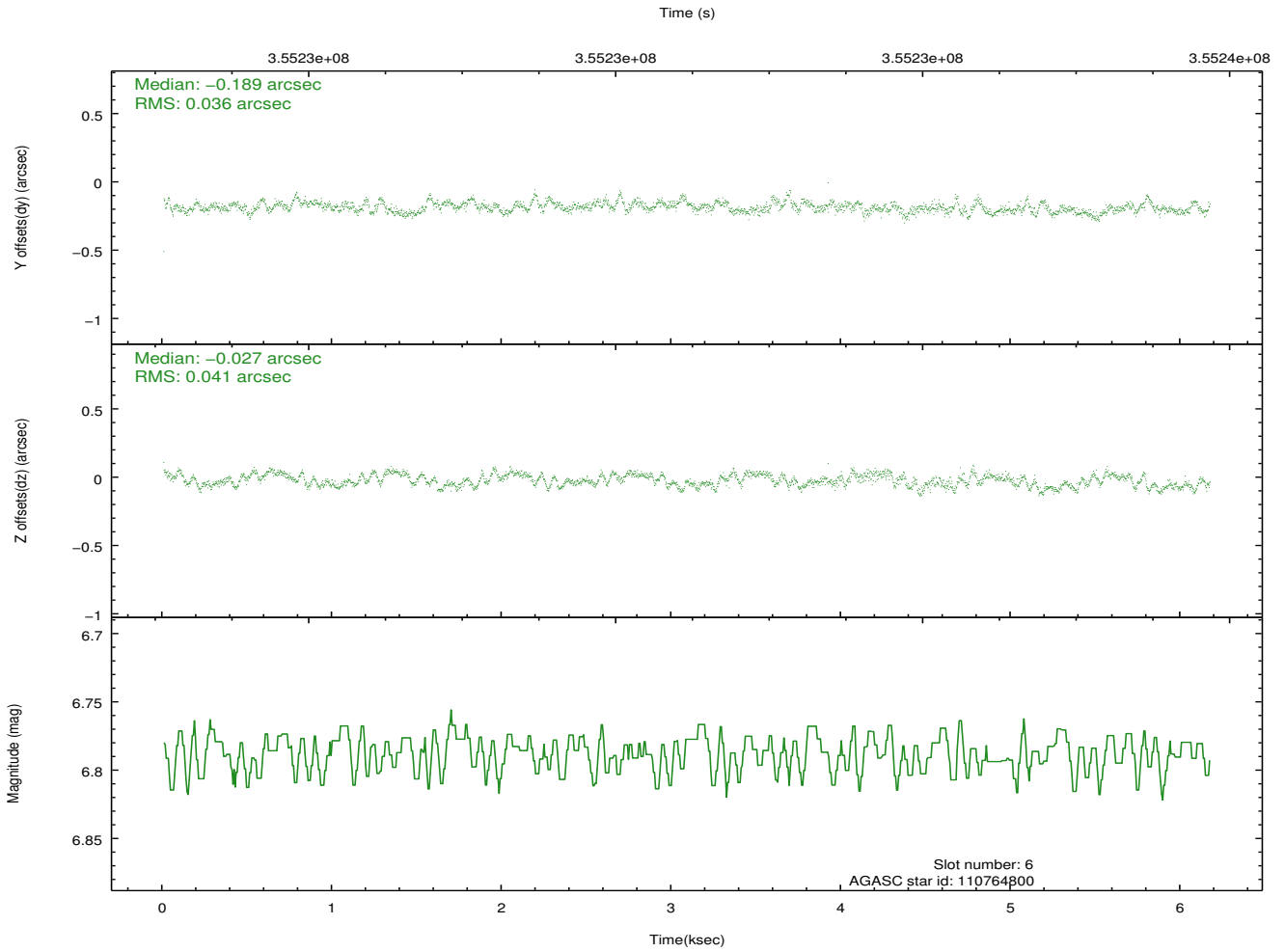
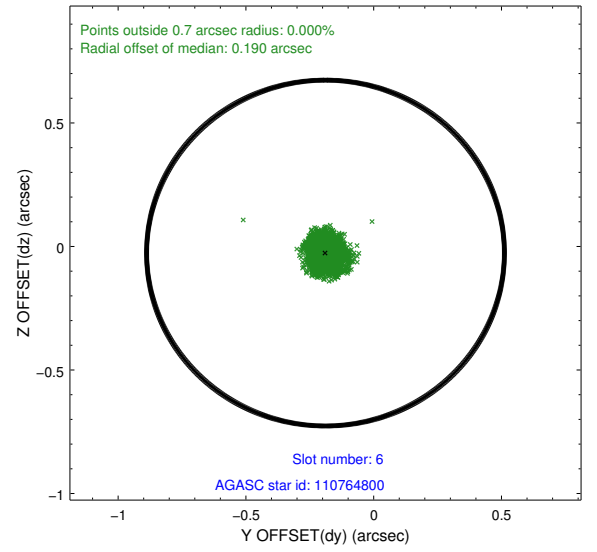
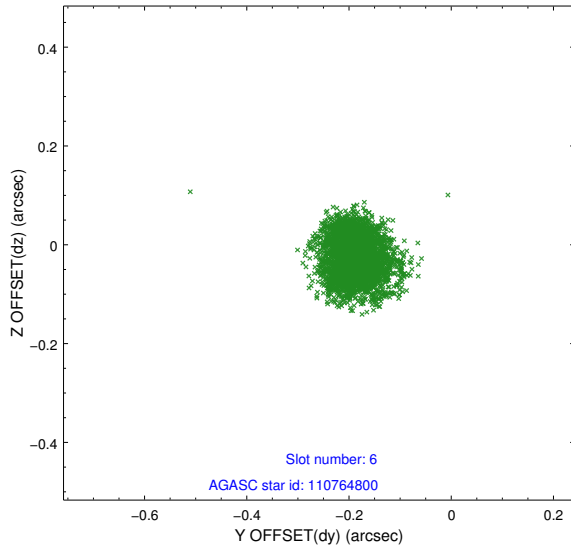
## 2.4.2 Slot 4



### 2.4.3 Slot 5

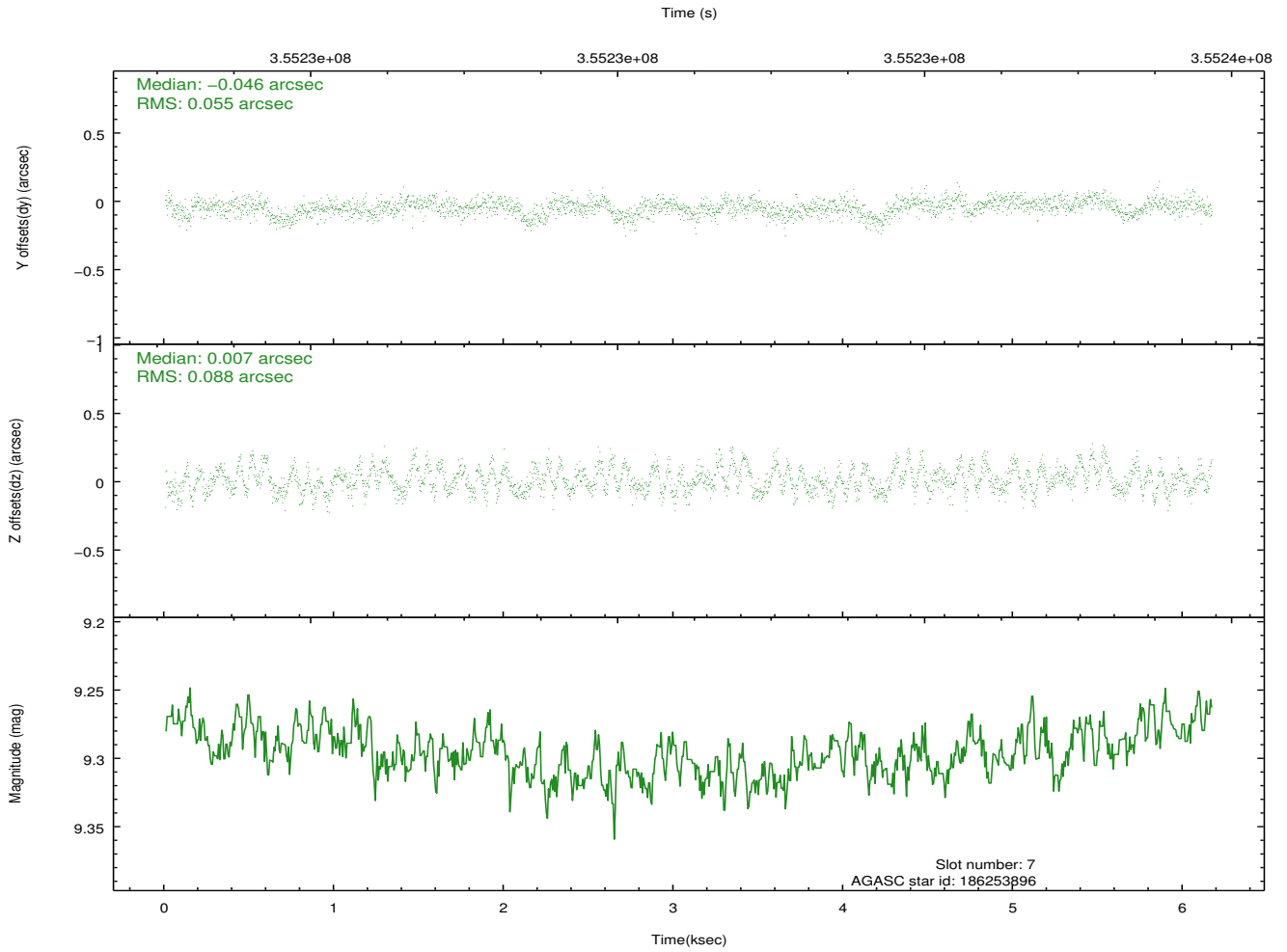
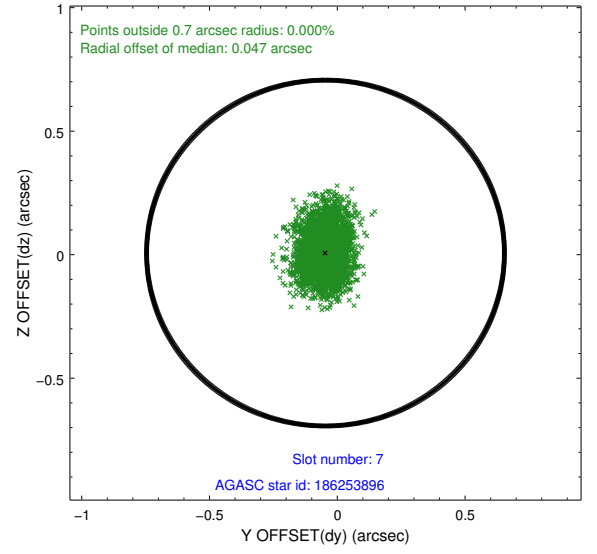
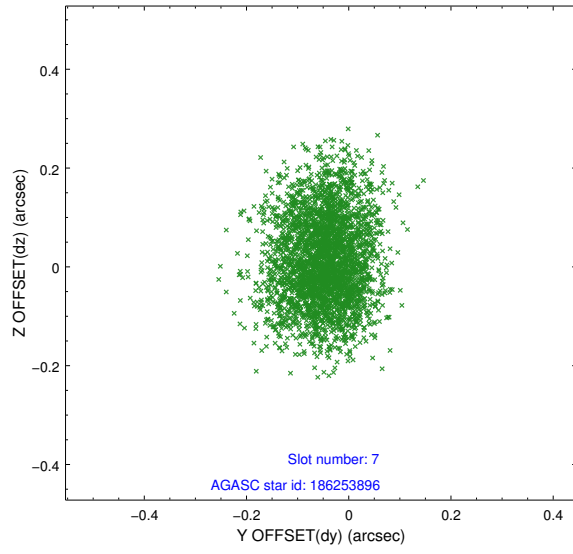


## 2.4.4 Slot 6



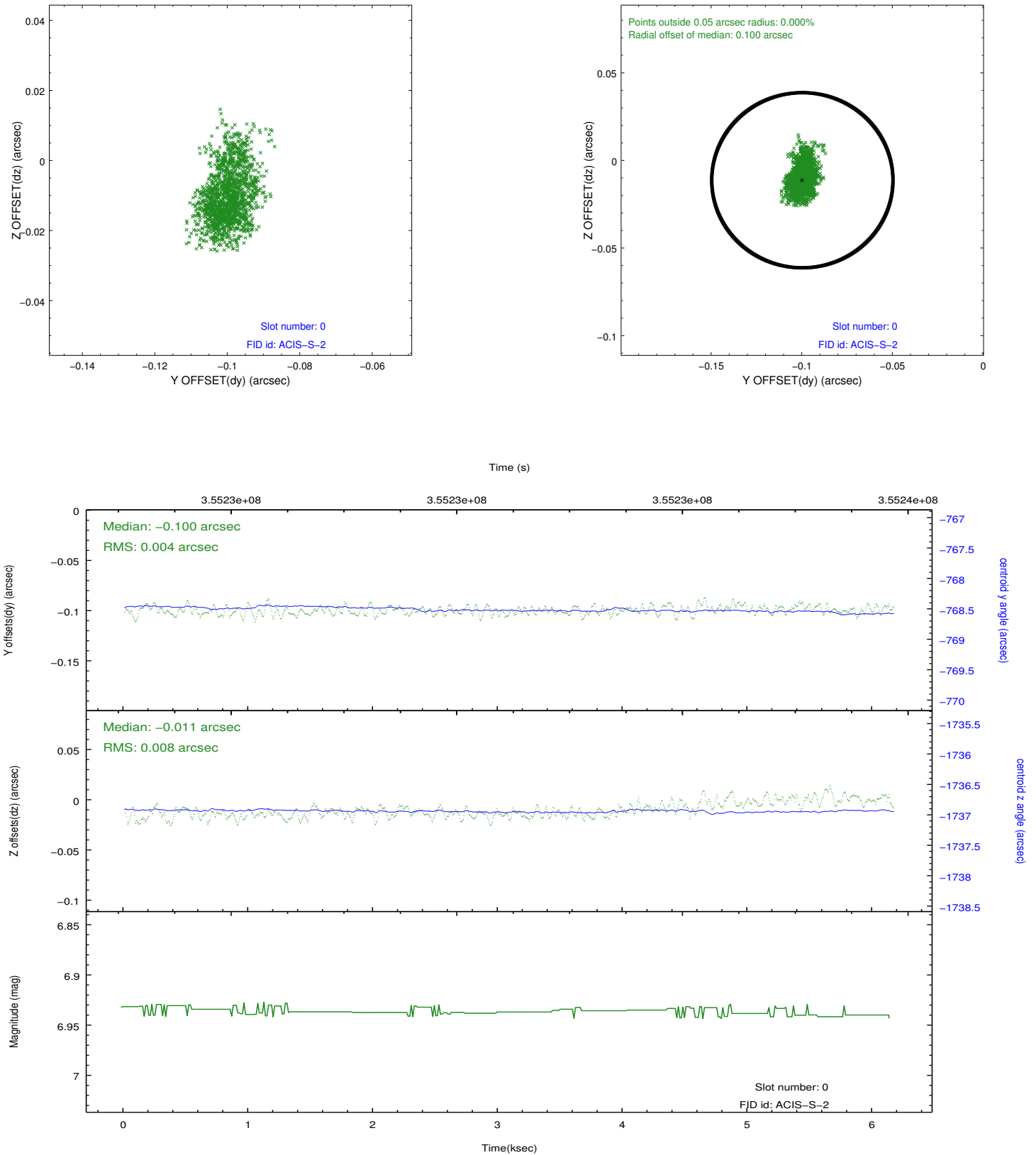


## 2.4.5 Slot 7

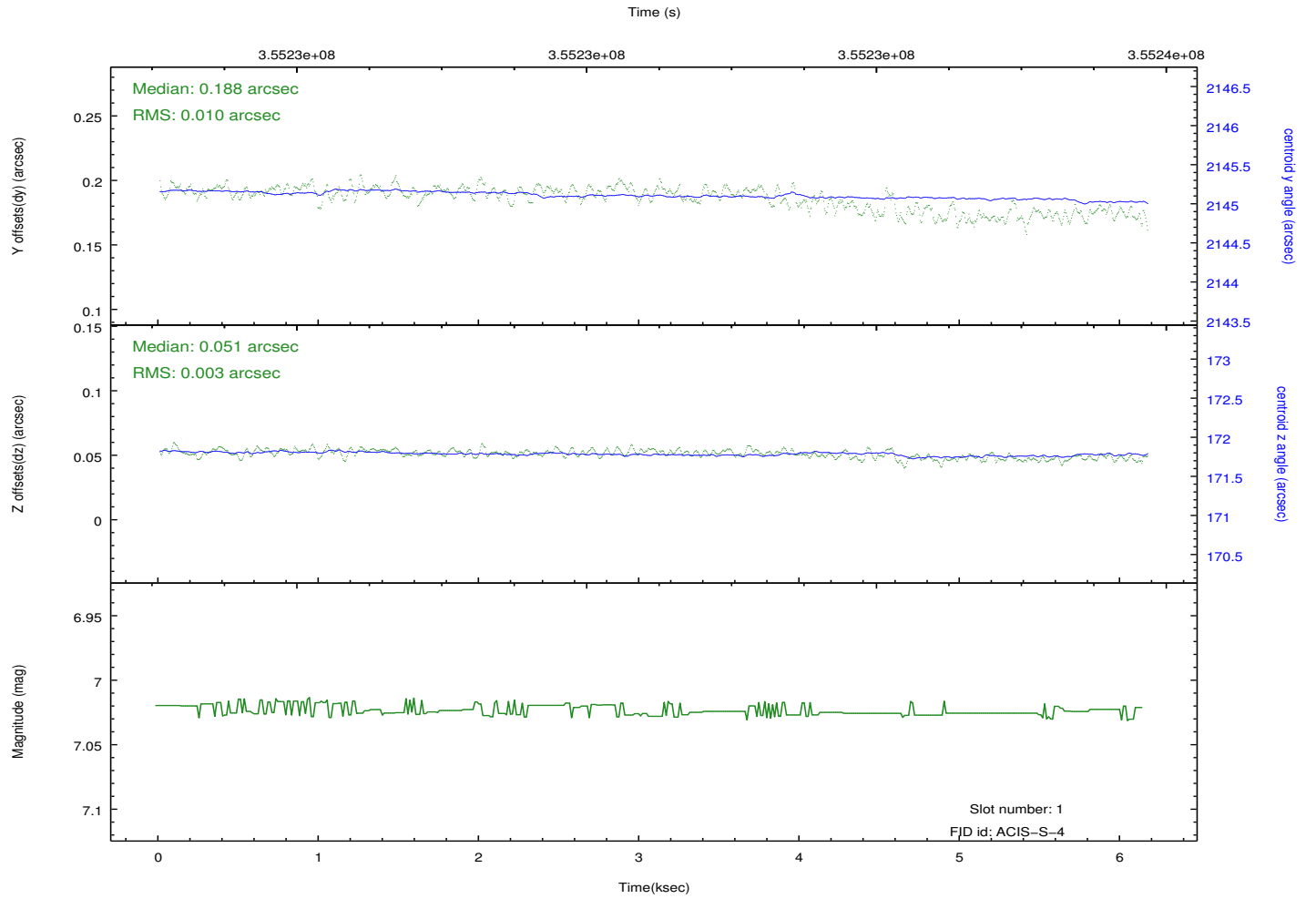
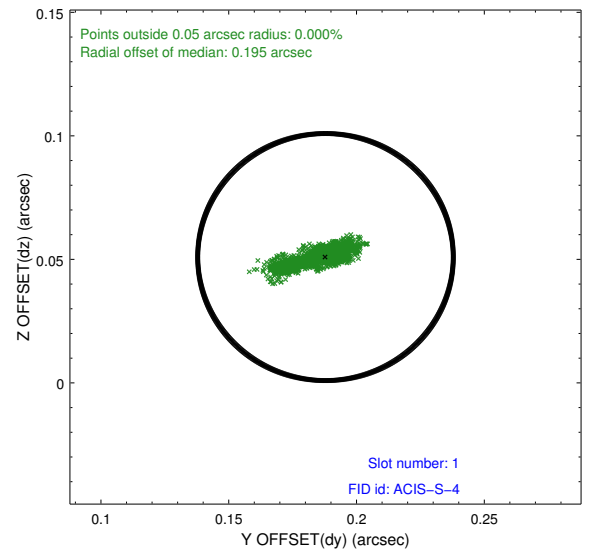
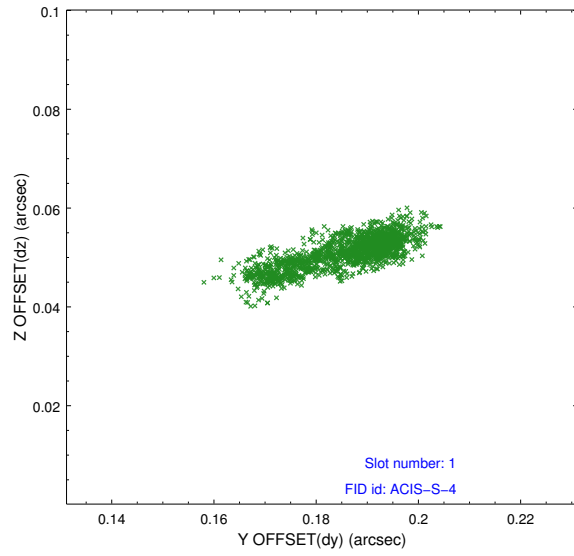


## 2.5 FID Slots

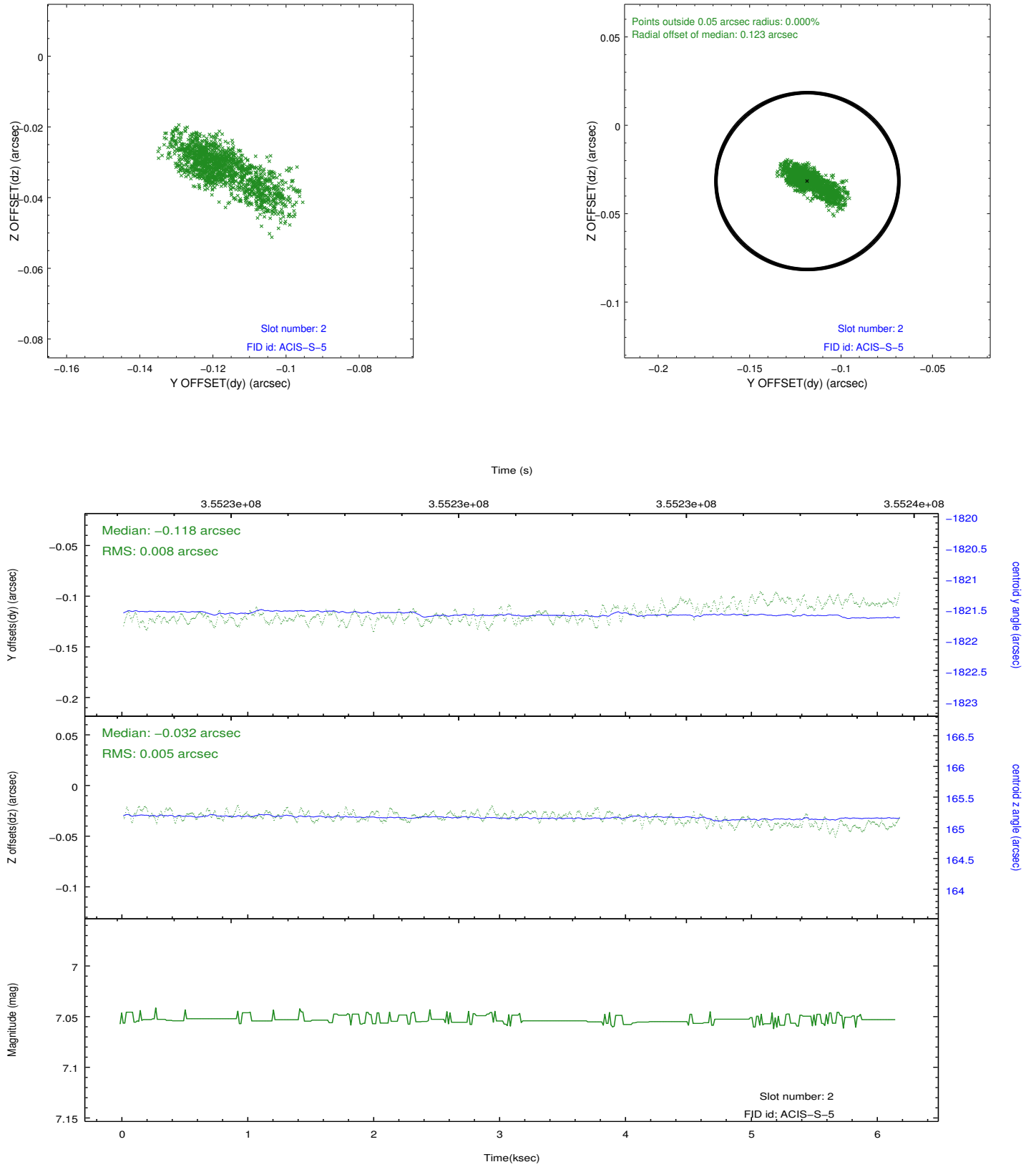
### 2.5.1 Slot 0



## 2.5.2 Slot 1



### 2.5.3 Slot 2



## A Summary

### A.1 Status

V&V Scientist	Beth Sundheim
V&V Date (YYYY-MM-DD)	2012.06.07
V&V Edition	1
V&V Disposition and Status	OK
V&V Charge Time	6.15970004

### A.2 Comments