

# V&V Reference Report

## L2 ASCDS Version : 8.4.4

Observation 10377 - L2 Version 2  
Chandra X-Ray Center

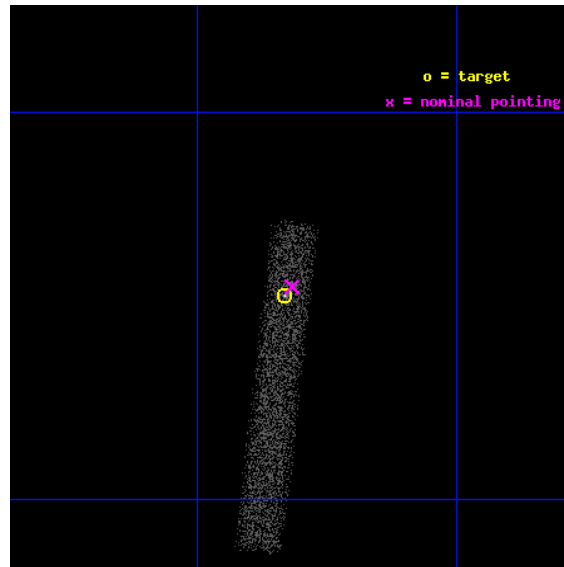
L2 Processing Date : May 29 2012

## Contents

<b>1</b>	<b>Front</b>	<b>2</b>
<b>2</b>	<b>OBI</b>	<b>3</b>
2.1	OBI . . . . .	3
2.1.1	Images . . . . .	3
2.1.2	Bias . . . . .	3
2.1.3	Parameters . . . . .	4
2.1.4	Events . . . . .	4
2.2	Compared Parameters . . . . .	5
2.3	Aspect . . . . .	6
2.4	Star Slots . . . . .	9
2.4.1	Slot 3 . . . . .	9
2.4.2	Slot 4 . . . . .	10
2.4.3	Slot 5 . . . . .	11
2.4.4	Slot 6 . . . . .	12
2.4.5	Slot 7 . . . . .	13
2.5	FID Slots . . . . .	14
2.5.1	Slot 0 . . . . .	14
2.5.2	Slot 1 . . . . .	15
2.5.3	Slot 2 . . . . .	16
<b>A</b>	<b>Summary</b>	<b>17</b>
A.1	Status . . . . .	17
A.2	Comments . . . . .	17

# 1 Front

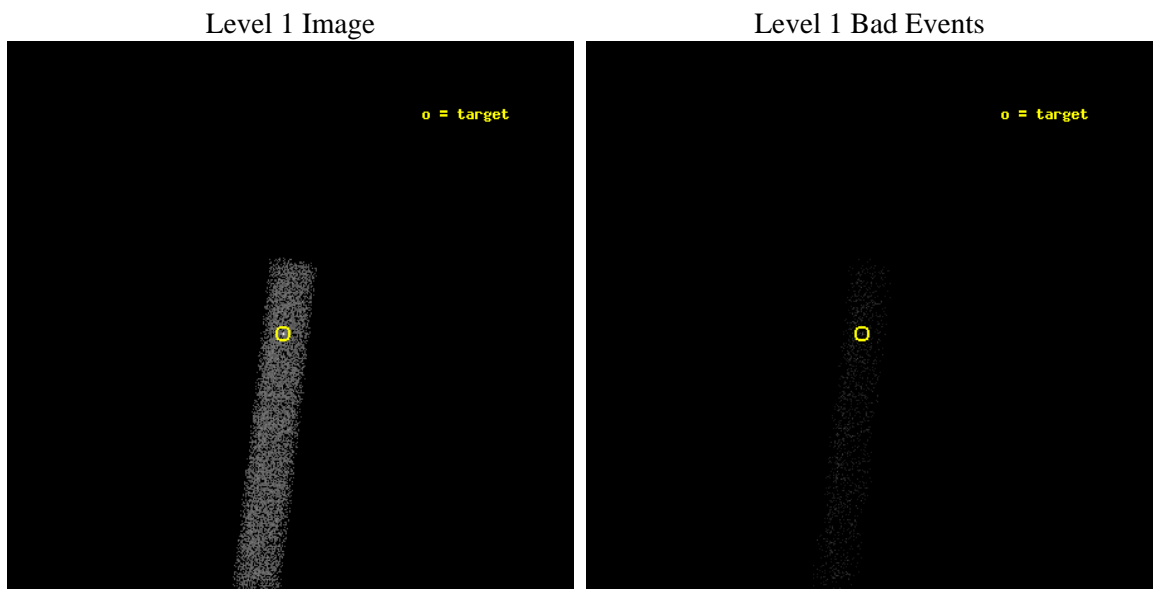
seq_num	701920	Sequence number
obs_id	10377	Observation id
title	Completing a Flux-limited Survey for X-ray Emission from Radio Jets	&#160
observer	Dr. Herman Marshall	Principal investigator
object	0953+254	Source name
dtcycle	0	&#160
cycle	P	events from which exps? Prim/Second/Both
ra_targ	149.207917	Observer's specified target RA [deg]
dec_targ	25.254444	Observer's specified target Dec [deg]
ra_nom	149.20452199473	Nominal RA [deg]
dec_nom	25.258265613388	Nominal Dec [deg]
roll_nom	96.475503612278	Nominal Roll [deg]
revision	2	Processing version of data
ontime	6181.9996315241	Sum of GTIs [s]
livetime	5606.7473530964	Livetime [s]
ontime7	6181.9996315241	Sum of GTIs [s]
l2events	5892	Number of level 2 events



## 2 OBI

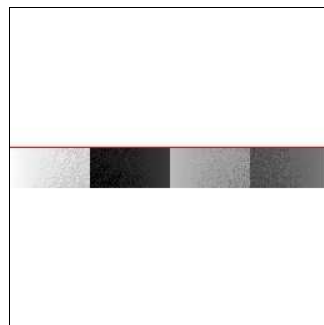
### 2.1 OBI

#### 2.1.1 Images



#### 2.1.2 Bias

Chip 7



### 2.1.3 Parameters

obi_num	0	Obi number	sched_exp_time	6000.000000	[s] Scheduled observation exposure time
ascdsver	8.4.4	Processing system revision	ontime	6181.9996315241	Sum of GTIs [s]
caldbver	4.4.9	&#160	ontime7	6181.9996315241	Sum of GTIs [s]
date	2012-05-29T02:40:16	Date and time of file creation	l1events	12738	Number of level 1 events
revision	2	Processing version of data			

### 2.1.4 Events

	<b>ccd 7</b>
level 1 events	12738
rejected events	6646
rejected %	52%

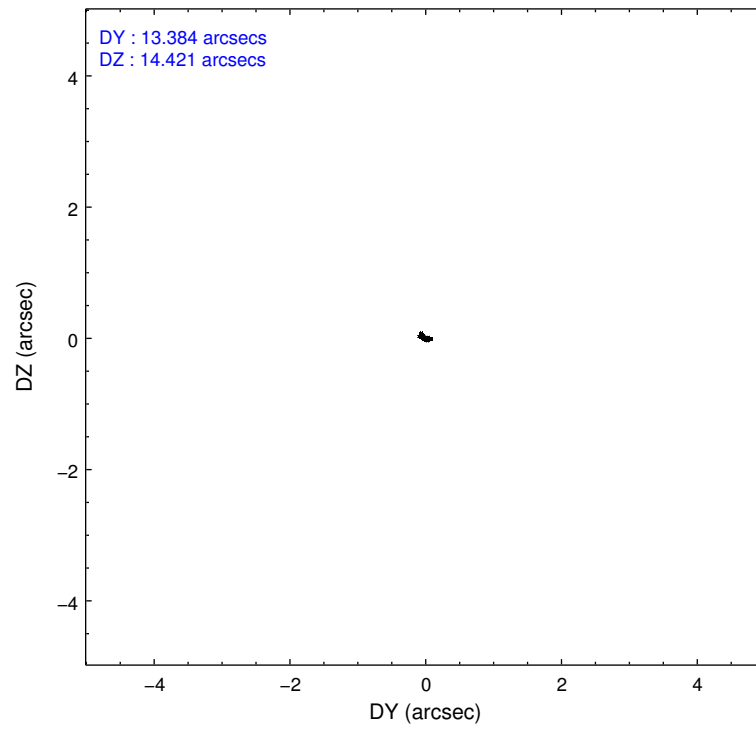
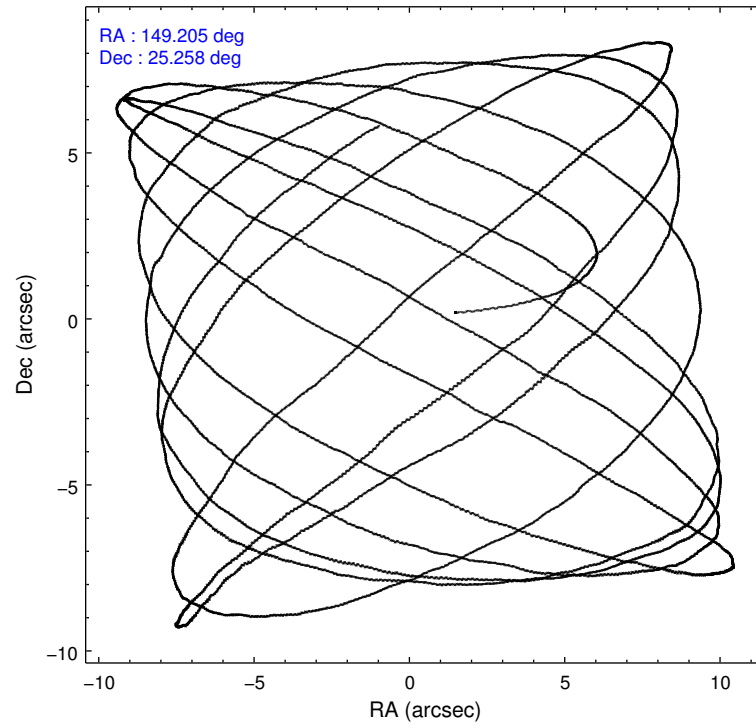
	<b>ccd 7</b>
grade 0 events	810
	6%
grade 1 events	15
	0%
grade 2 events	1320
	10%
grade 3 events	785
	6%
grade 4 events	744
	5%
grade 5 events	1146
	8%
grade 6 events	2675
	21%
grade 7 events	5243
	41%

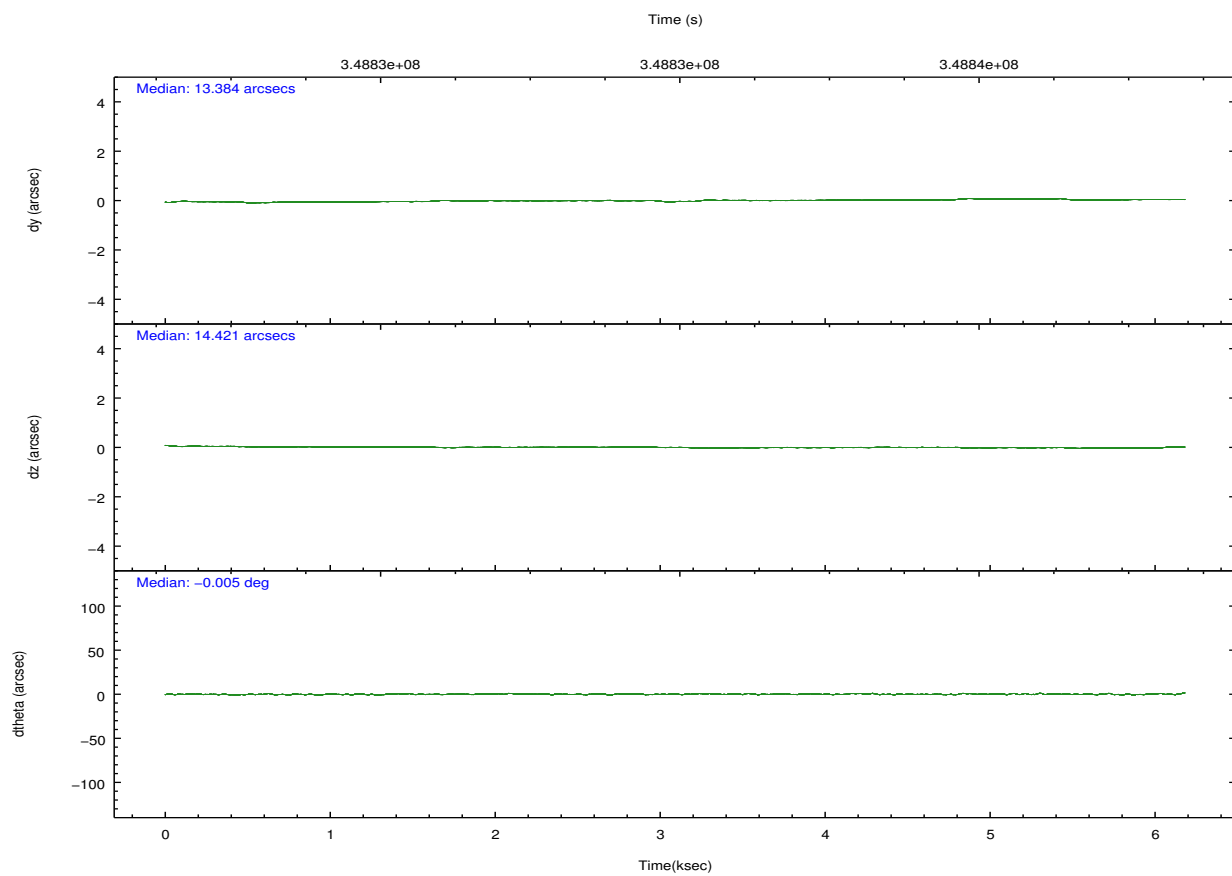
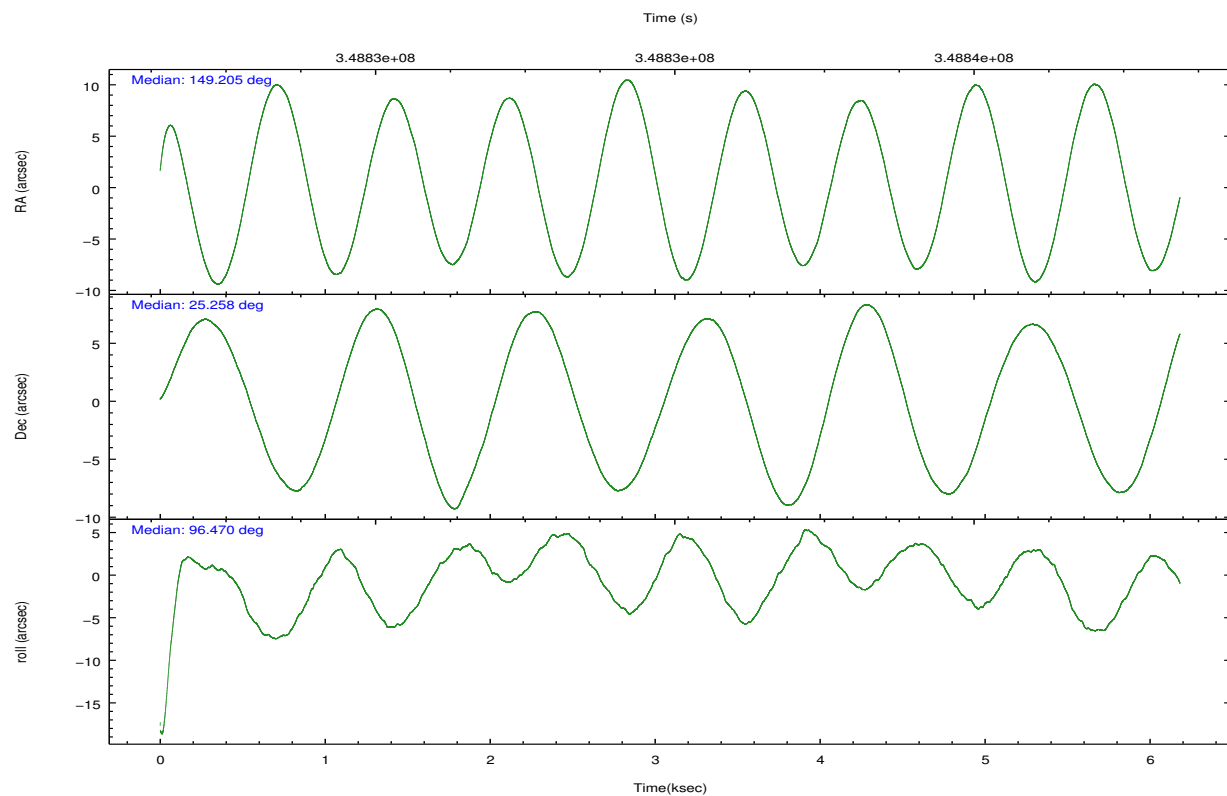


## 2.2 Compared Parameters

Parameter	Planned	Actual	Parameter	Planned	Actual
Instrument	ACIS	ACIS	Obspar format version number	7	7
Detector	ACIS-7	ACIS-7	Obspar file type	PREDICTED	ACTUAL
Grating	NONE	NONE	Obspar update status	NONE	UPDATED
Data mode	VFAINT	VFAINT	Number of optional ACIS chips dropped	0	0
Observation mode	POINTING	POINTING	On-chip summing requested	N	N
[deg] Pointing RA	149.222902	149.2045219947326	Subarray requested	CUSTOM	1/8
[deg] Pointing Dec	25.236494	25.25826561338821	Subarray start row	449	449
[deg] Pointing Roll	96.311065	96.47550361227822	Subarray row count	128	128
[mm] SIM focus pos	-0.684267	-0.6828225247311905	Alternating exposures requested	N	N
[mm] SIM defocus	0	0.001444936568705701	[s] Primary exposure time	0.000000	0.4
[mm] SIM translation stage pos	-190.132523	-190.1400660498719			
[mm] SIM translation stage offset	0	0.00754346686406393			
[s] Observation start time (MET)	348831062.184000	348830310.38054			
Observation start date	2009-01-20T09:29:56	2009-01-20T09:18:30			
[s] Observation end time (MET)	348837062.184000	348838030.16842			
Observation end date	2009-01-20T11:09:56	2009-01-20T11:27:10			
Read mode	TIMED	TIMED			

## 2.3 Aspect



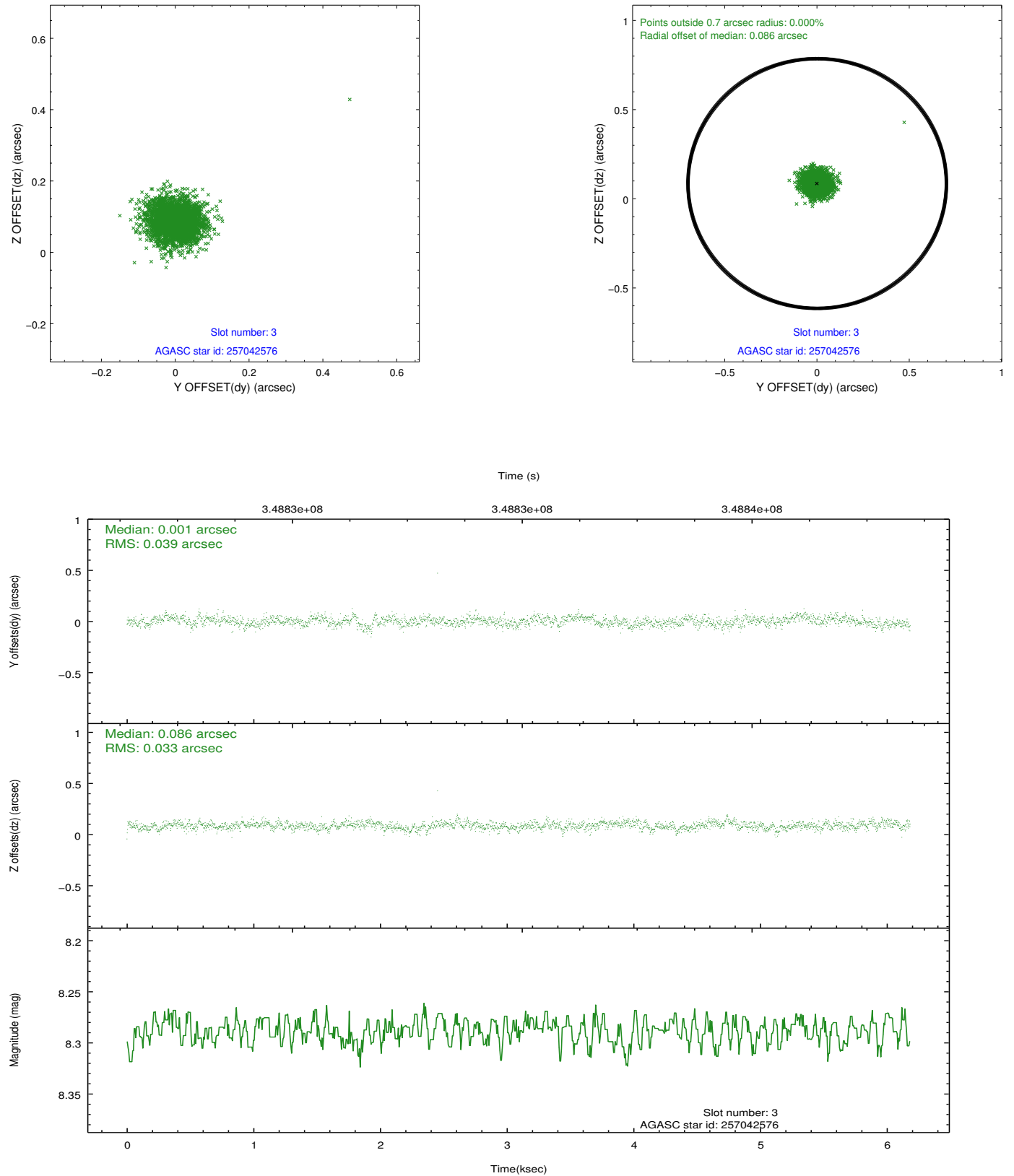


### Slot Statistics

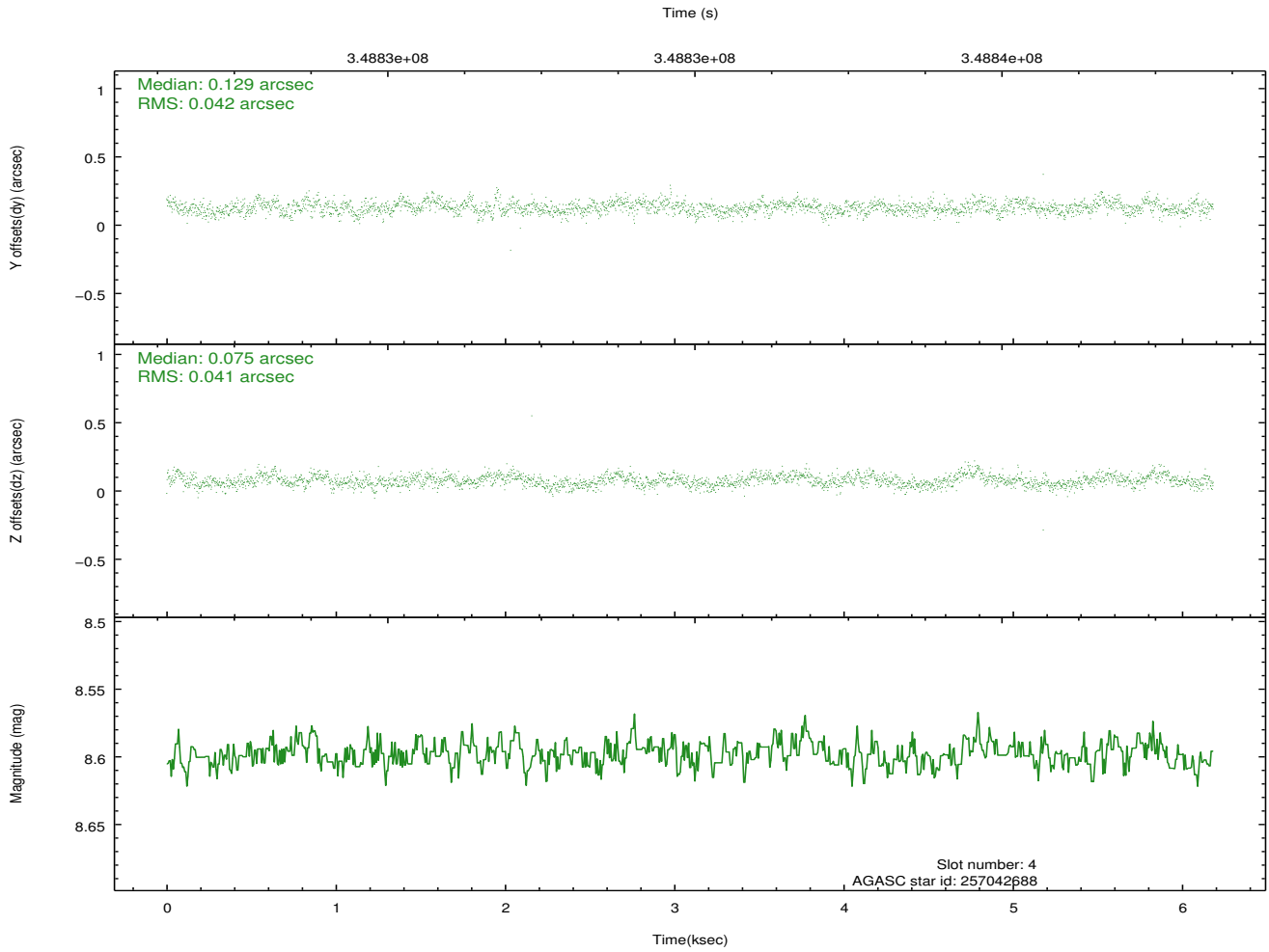
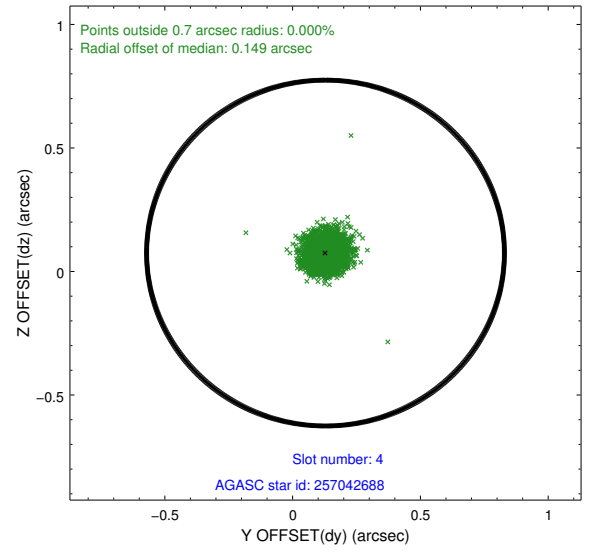
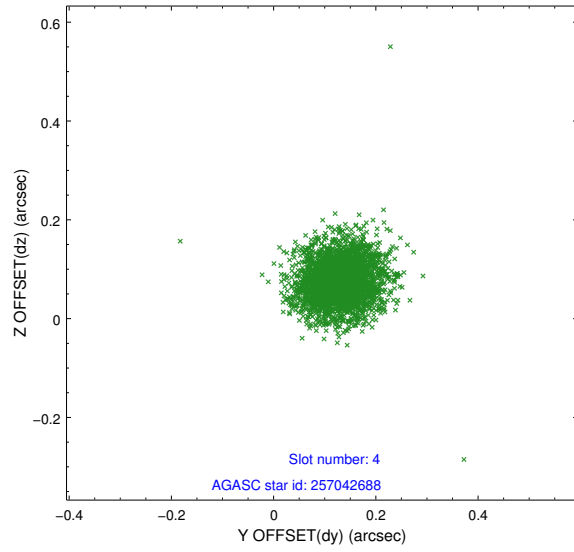
slot	status	id	mag	n_pts	med_dy	med_dz	dr1	dr2	ra	dec	mean_y	mean_z
0	FID	ACIS-S-2	6.95	1507	-0.051	-0.040	0.007	0.012	0.000000	0.000000	-766.34	-1735.84
1	FID	ACIS-S-4	7.03	1508	0.184	0.035	0.006	0.013	0.000000	0.000000	2146.72	171.77
2	FID	ACIS-S-5	7.06	1508	-0.164	0.014	0.007	0.011	0.000000	0.000000	-1818.09	166.46
3	GUIDE	257042576	8.29	3016	0.001	0.086	0.052	0.086	149.334482	24.795046	-1619.83	-187.02
4	GUIDE	257042688	8.60	3017	0.129	0.075	0.060	0.100	149.449928	24.615457	-2303.91	-493.32
5	GUIDE	257042888	7.20	3017	-0.089	-0.191	0.064	0.112	148.774772	24.637182	-1983.02	1693.98
6	GUIDE	257043080	8.51	3016	-0.007	0.133	0.068	0.108	149.219031	24.977618	-925.53	115.67
7	GUIDE	257434592	9.37	3015	-0.038	-0.097	0.101	0.172	149.842218	25.494579	706.84	-2102.82

## 2.4 Star Slots

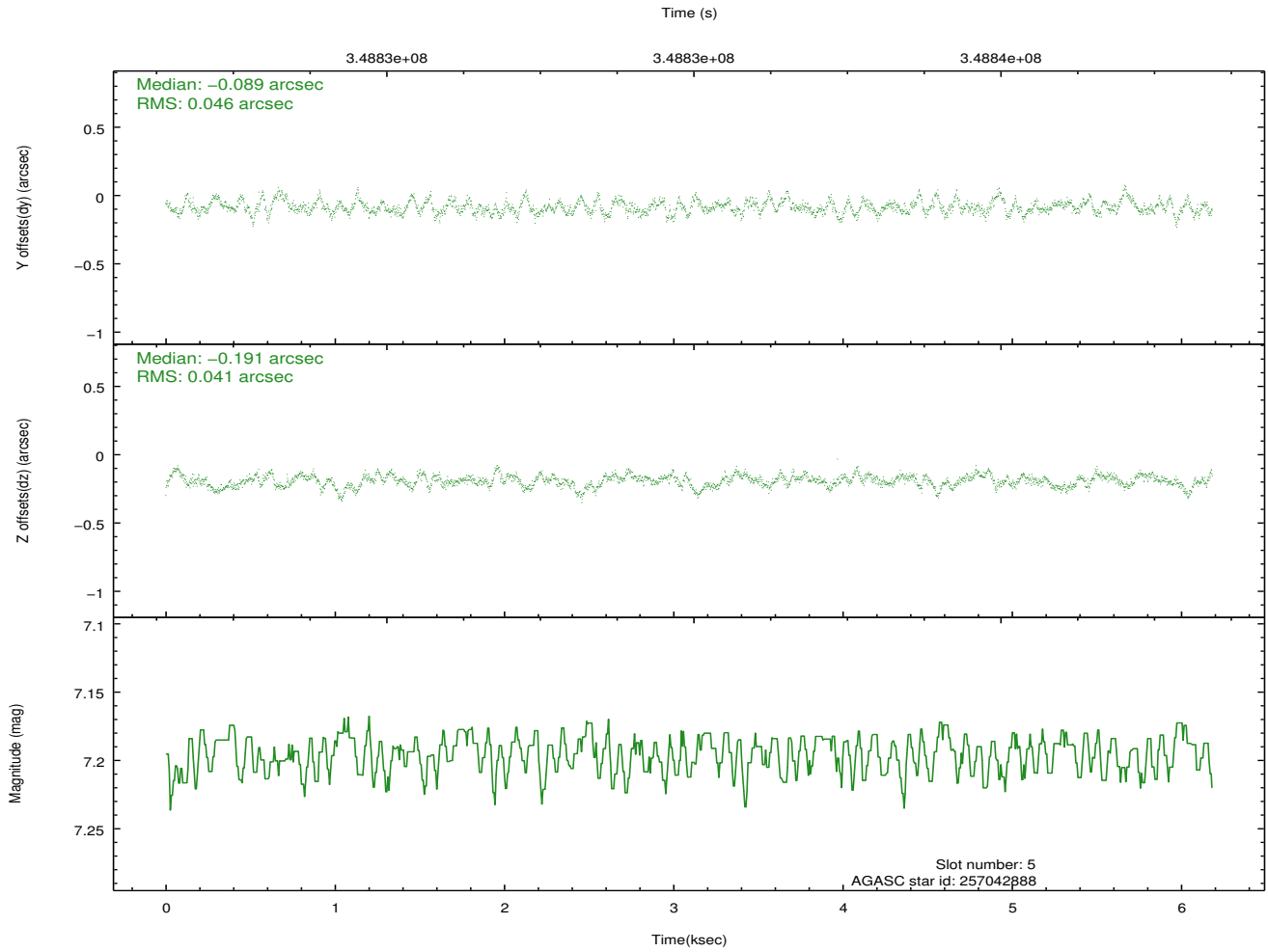
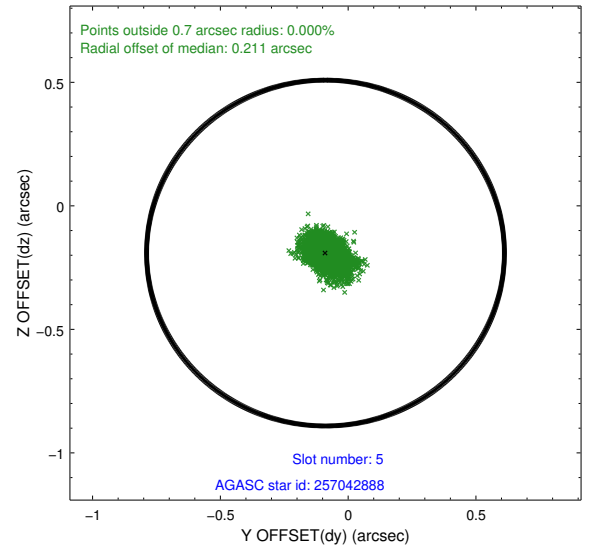
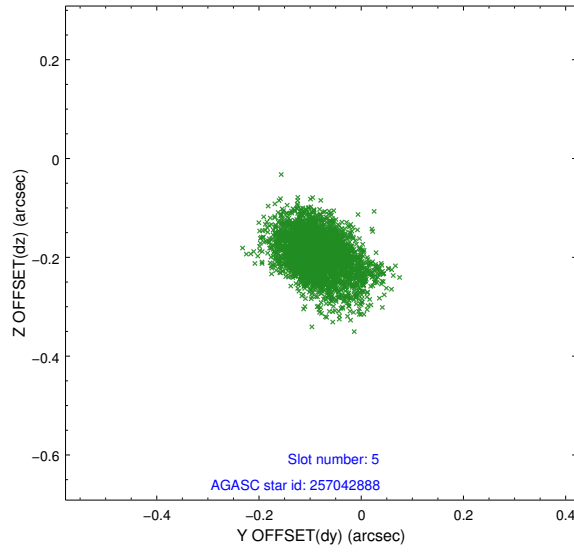
### 2.4.1 Slot 3



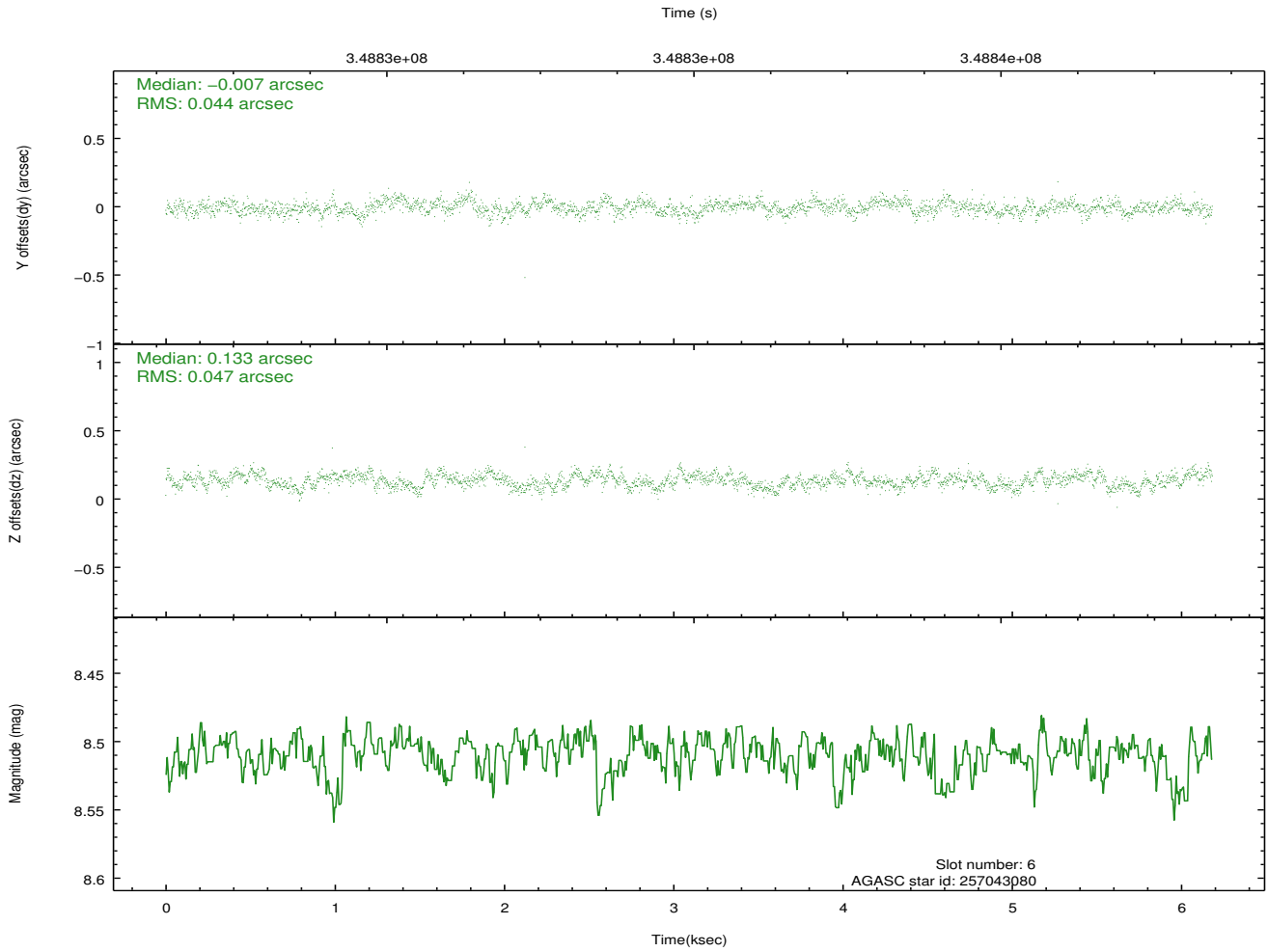
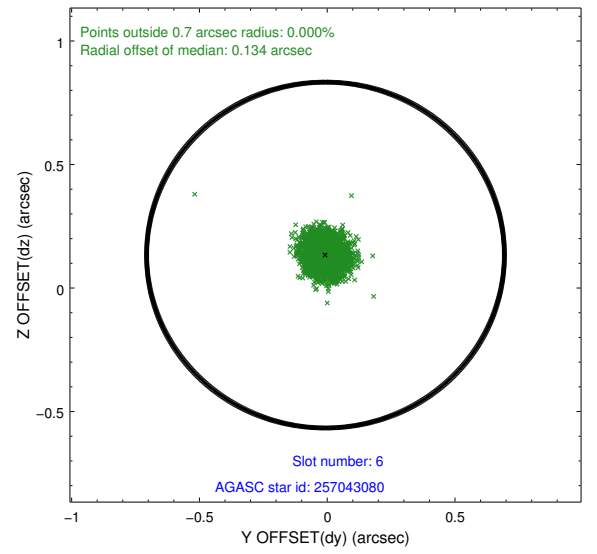
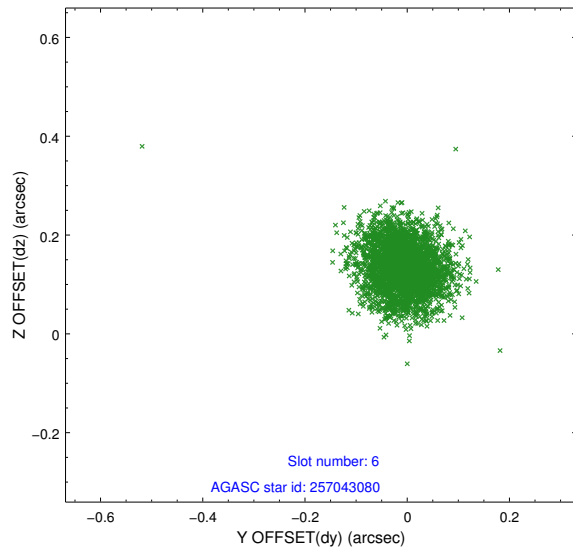
## 2.4.2 Slot 4



### 2.4.3 Slot 5

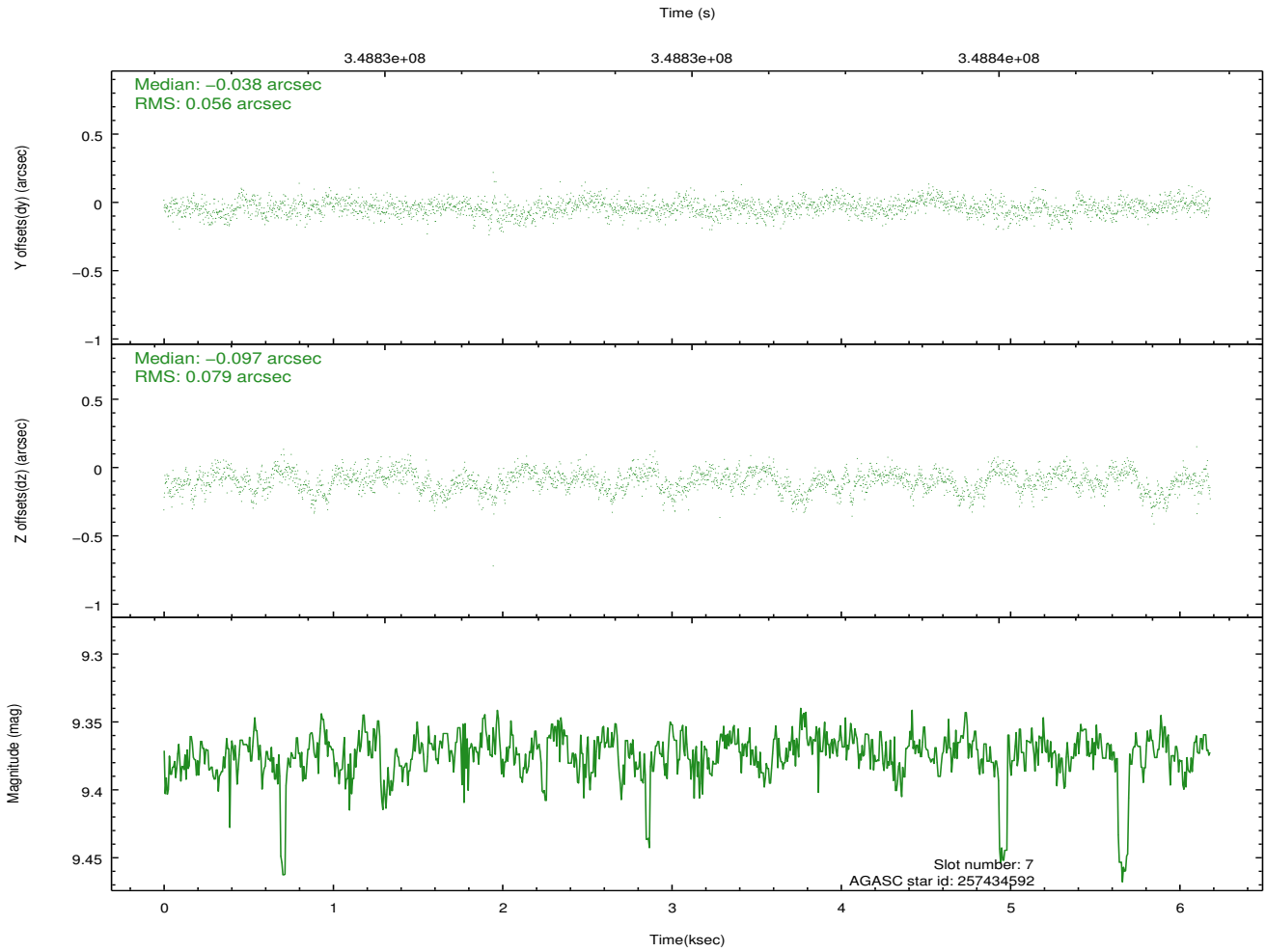
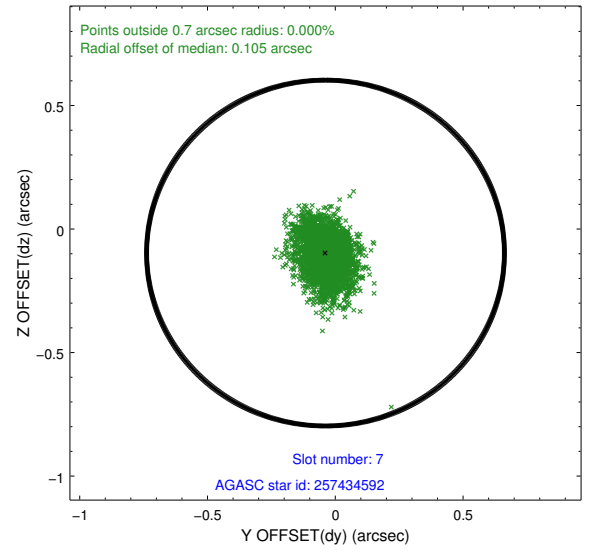
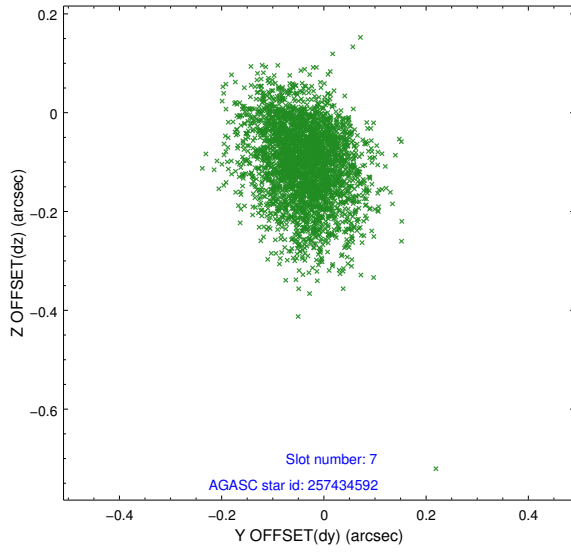


## 2.4.4 Slot 6



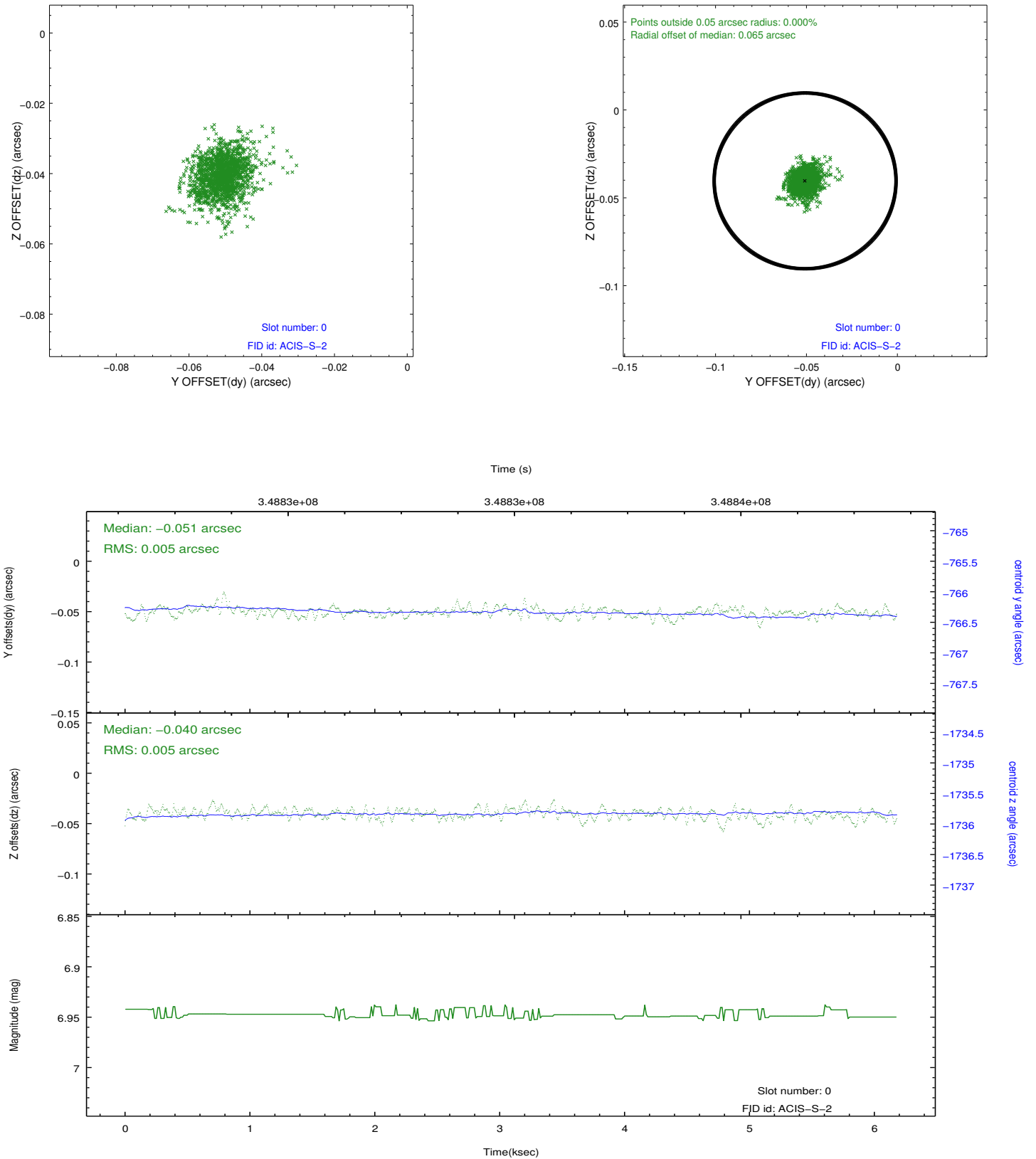


## 2.4.5 Slot 7

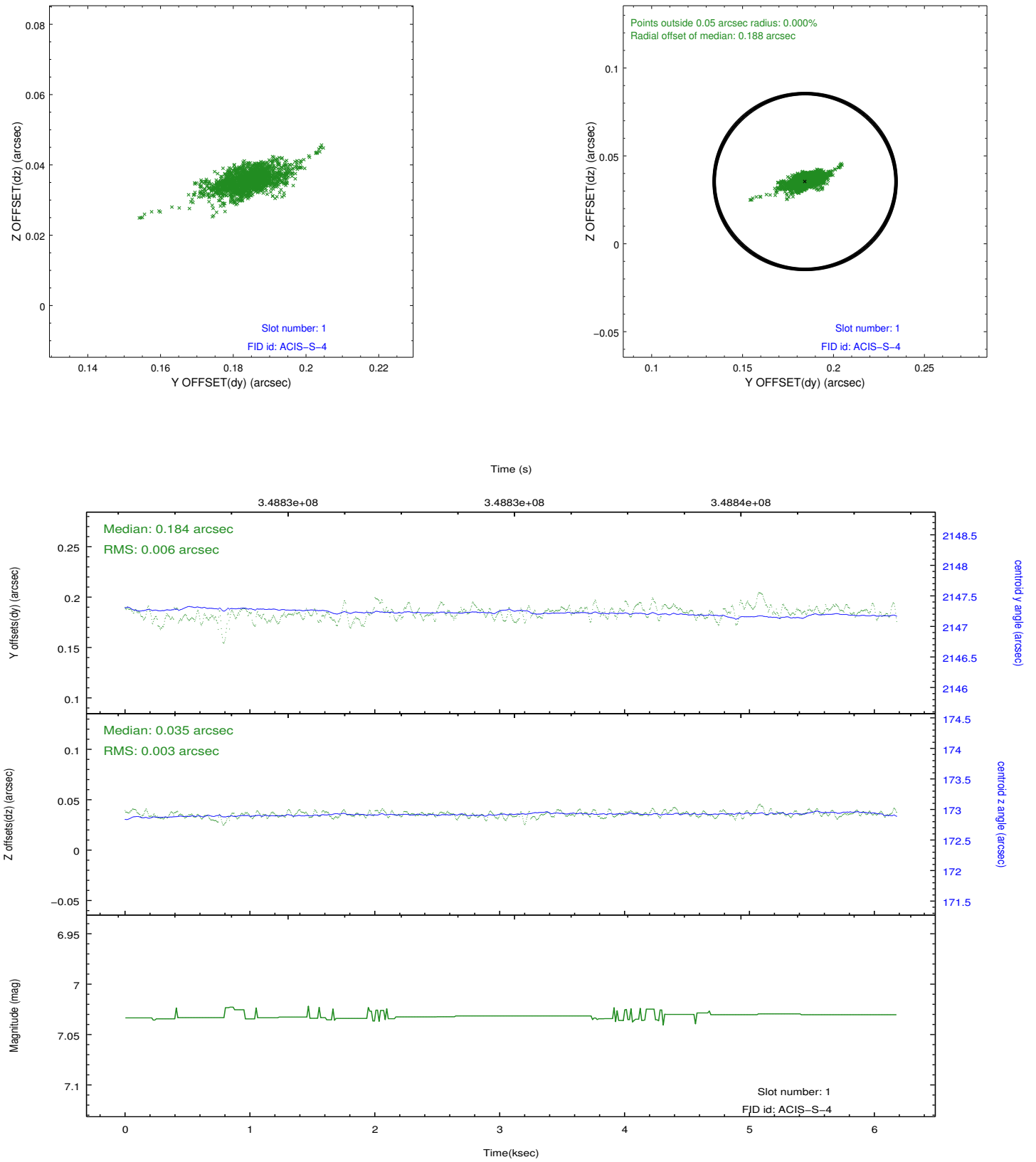


## 2.5 FID Slots

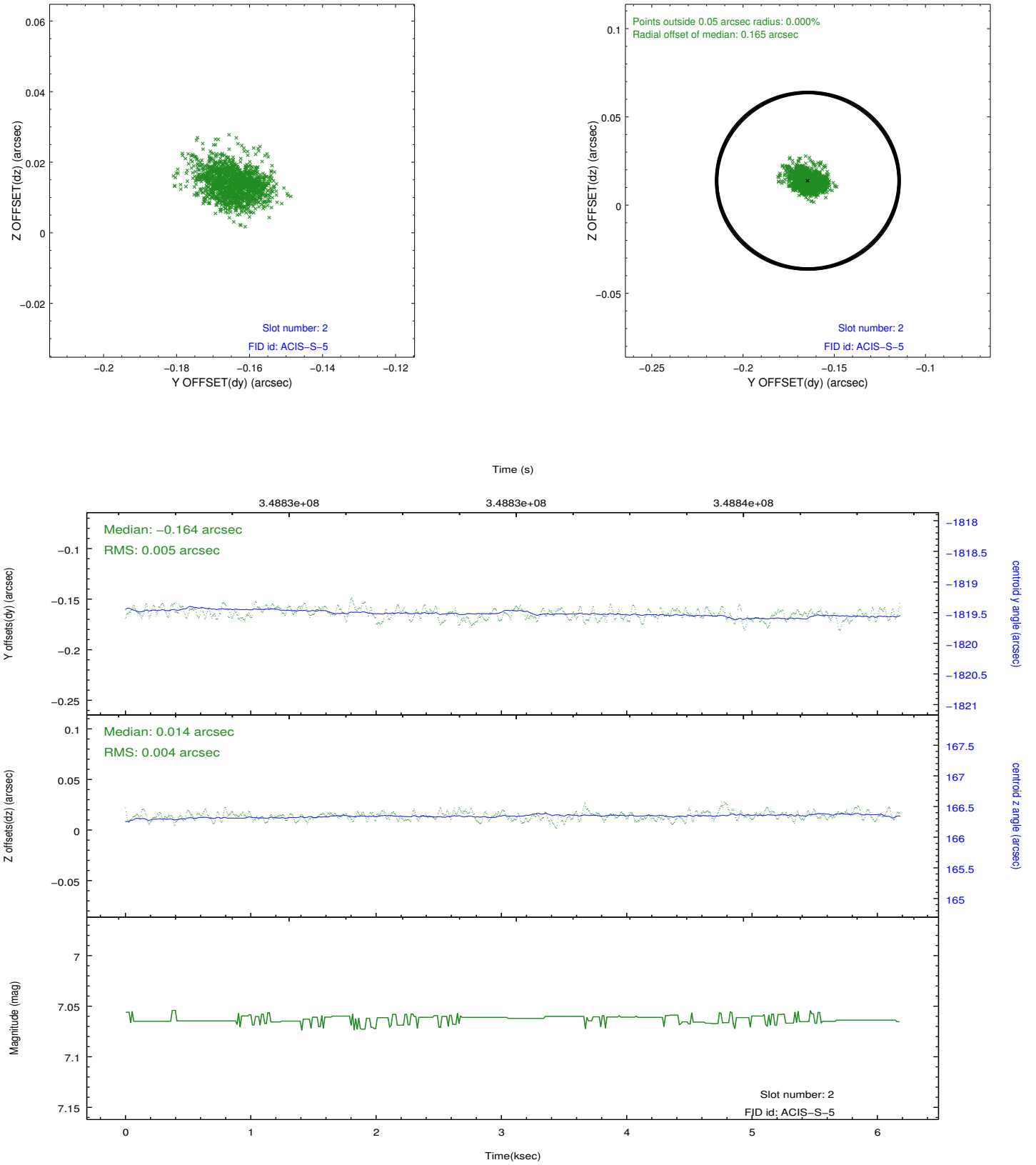
### 2.5.1 Slot 0



## 2.5.2 Slot 1



### 2.5.3 Slot 2



## A Summary

### A.1 Status

V&V Scientist	Jen Lauer
V&V Date (YYYY-MM-DD)	2012.06.04
V&V Edition	1
V&V Disposition and Status	OK
V&V Charge Time	6.18199963

### A.2 Comments

Joint proposal with HST. Roll preference not met.