

V&V Reference Report

L2 ASCDS Version : 8.4.4

Observation 10331 - L2 Version 3
Chandra X-Ray Center

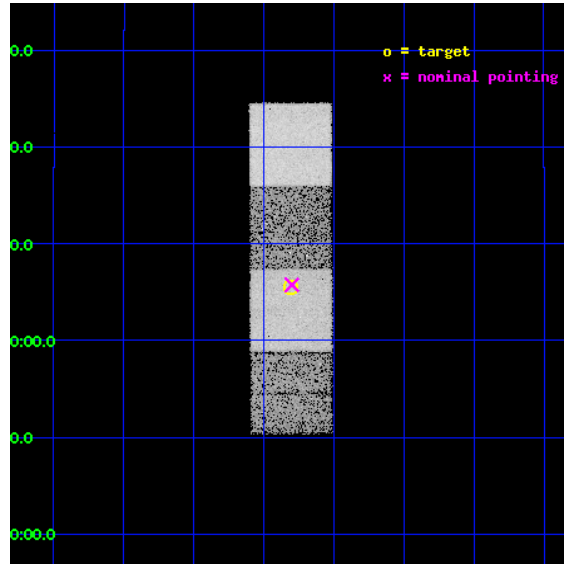
L2 Processing Date : May 31 2012

Contents

1	Front	2
2	OBI	3
2.1	OBI	3
2.1.1	Images	3
2.1.2	Bias	3
2.1.3	Parameters	4
2.1.4	Events	4
2.2	Compared Parameters	5
2.3	Aspect	6
2.4	Star Slots	9
2.4.1	Slot 3	9
2.4.2	Slot 5	10
2.4.3	Slot 6	11
2.4.4	Slot 7	12
2.5	FID Slots	13
2.5.1	Slot 0	13
2.5.2	Slot 1	14
2.5.3	Slot 2	15
A	Summary	16
A.1	Status	16
A.2	Comments	16

1 Front

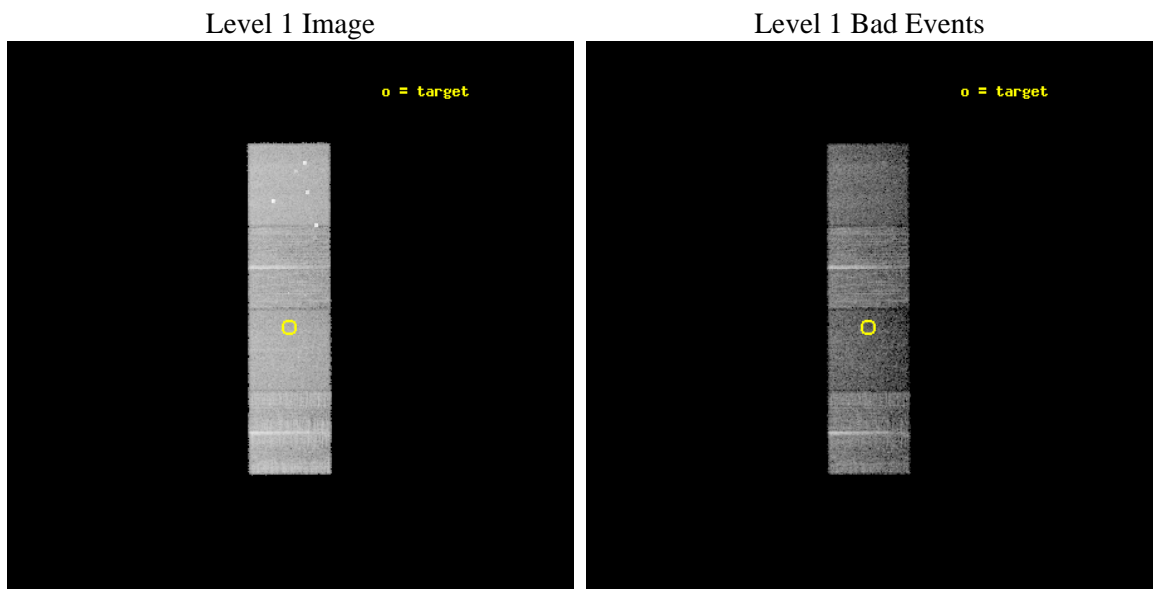
seq_num	701874	Sequence number
obs_id	10331	Observation id
title	Luminous Compton-thick QSOs at z~1	Proposal title
observer	Dr. Roberto Gilli	Principal investigator
object	SDSS J125848.58+120531.1	Source name
dtcycle	0	
cycle	P	events from which exps? Prim/Second/Both
ra_targ	194.7025	Observer's specified target RA [deg]
dec_targ	12.091972	Observer's specified target Dec [deg]
ra_nom	194.69994025546	Nominal RA [deg]
dec_nom	12.096138733936	Nominal Dec [deg]
roll_nom	89.741689803715	Nominal Roll [deg]
revision	3	Processing version of data
ontime	9343.4000718594	Sum of GTIs [s]
livetime	9221.3216714095	Livetime [s]
ontime5	9343.4000718594	Sum of GTIs [s]
ontime6	9343.4000718594	Sum of GTIs [s]
ontime7	9343.4000718594	Sum of GTIs [s]
ontime8	9343.4000718594	Sum of GTIs [s]
l2events	95843	Number of level 2 events



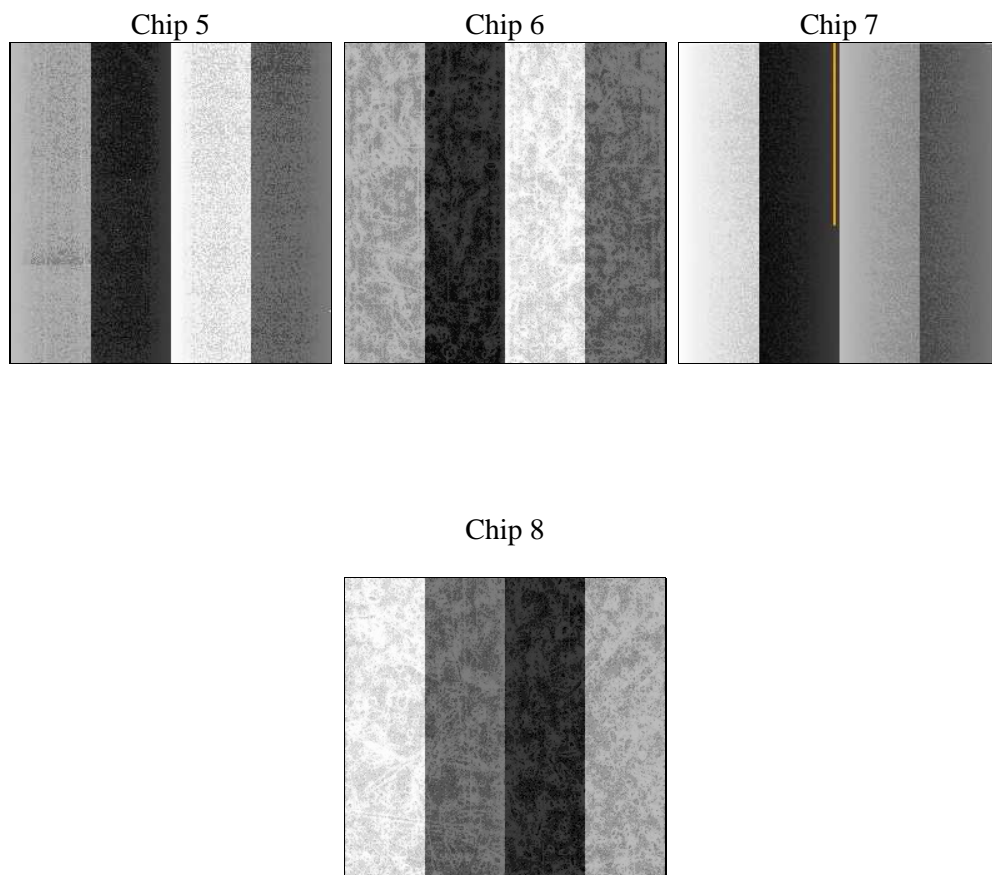
2 OBI

2.1 OBI

2.1.1 Images



2.1.2 Bias



2.1.3 Parameters

obi_num	0	Obi number	sched_exp_time	9300.000000	[s] Scheduled observation exposure time
ascdsver	8.4.4	Processing system revision	ontime	9343.4000718594	Sum of GTIs [s]
caldsver	4.4.9	 	ontime5	9343.4000718594	Sum of GTIs [s]
date	2012-05-31T22:34:57	Date and time of file creation	ontime6	9343.4000718594	Sum of GTIs [s]
revision	3	Processing version of data	ontime7	9343.4000718594	Sum of GTIs [s]
			ontime8	9343.4000718594	Sum of GTIs [s]
			l1events	334809	Number of level 1 events

2.1.4 Events

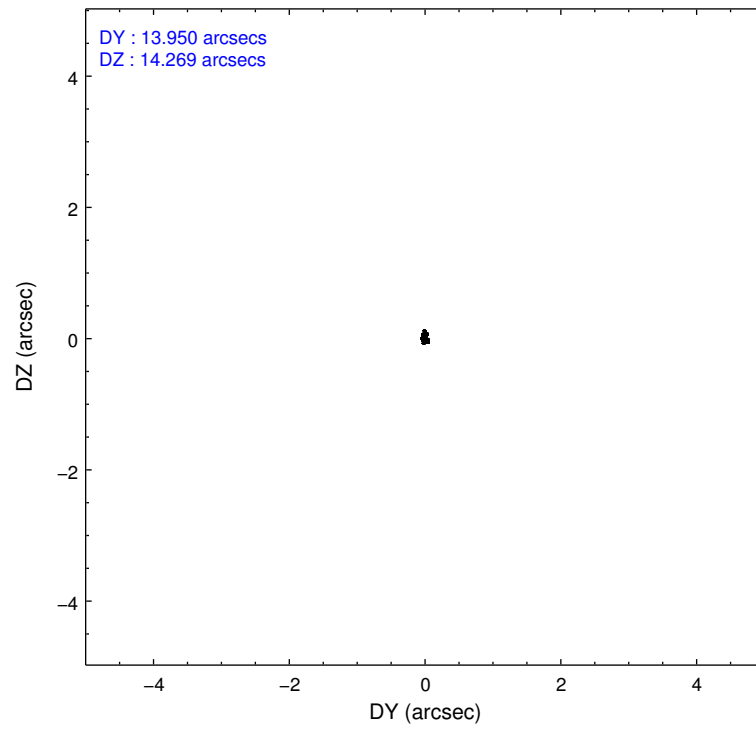
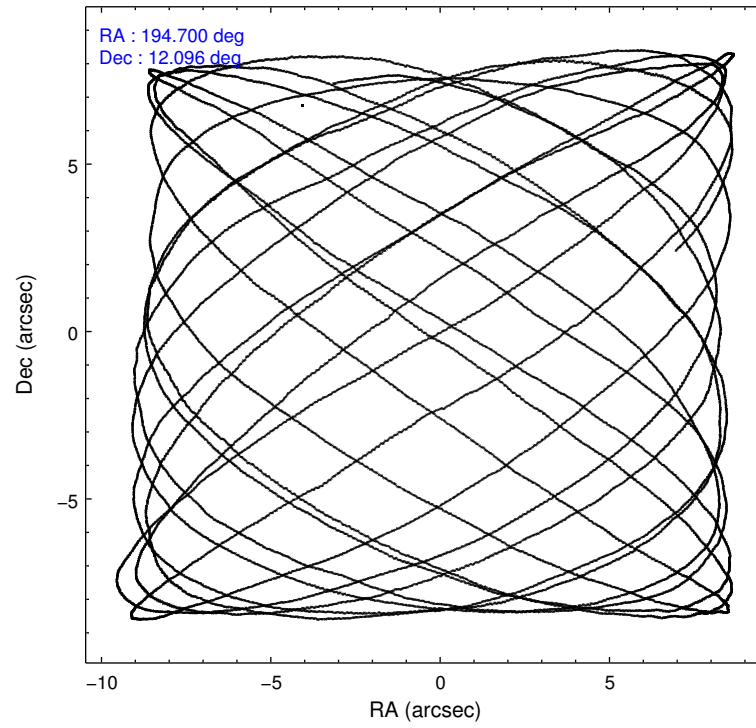
	ccd 5	ccd 6	ccd 7	ccd 8
level 1 events	98209	73246	71466	91888
rejected events	44310	65338	36086	68564
rejected %	45%	89%	50%	74%

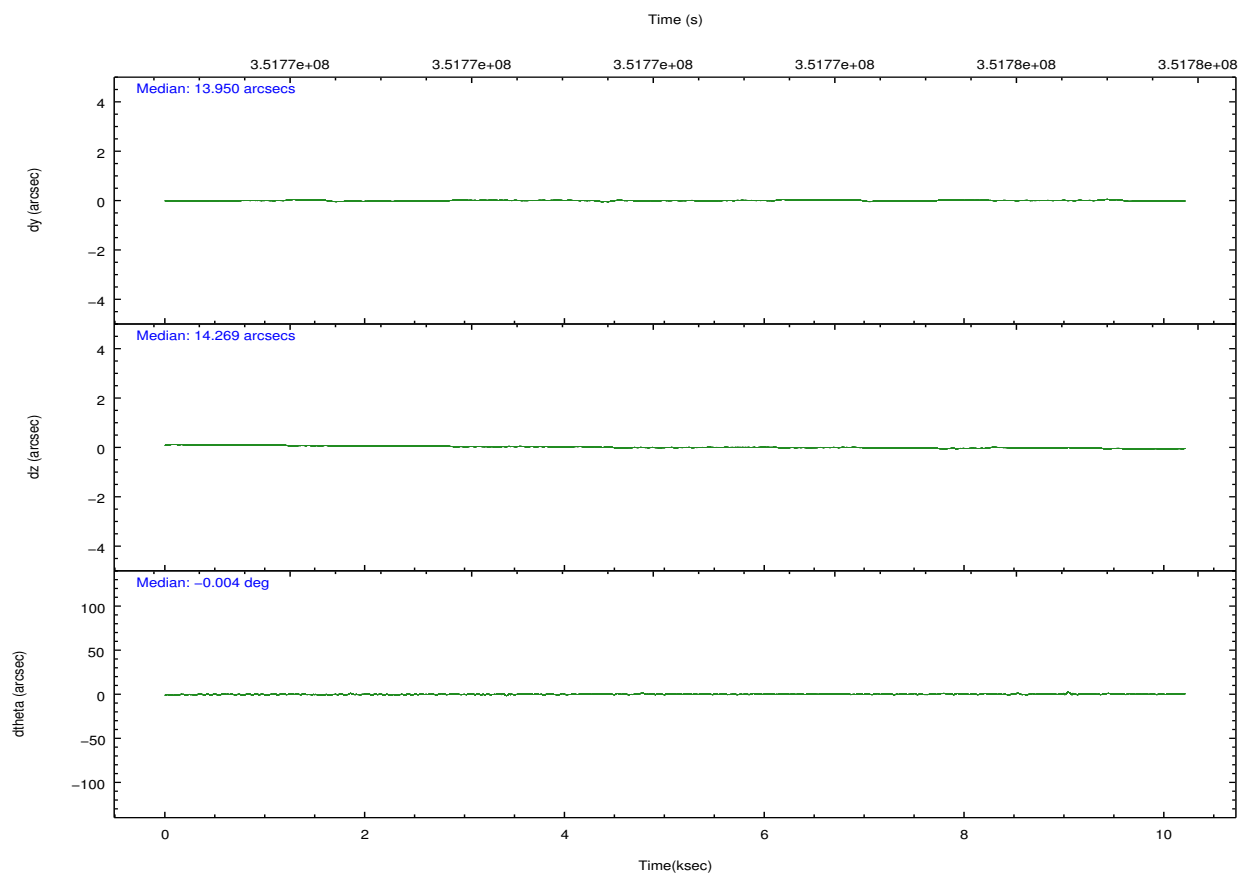
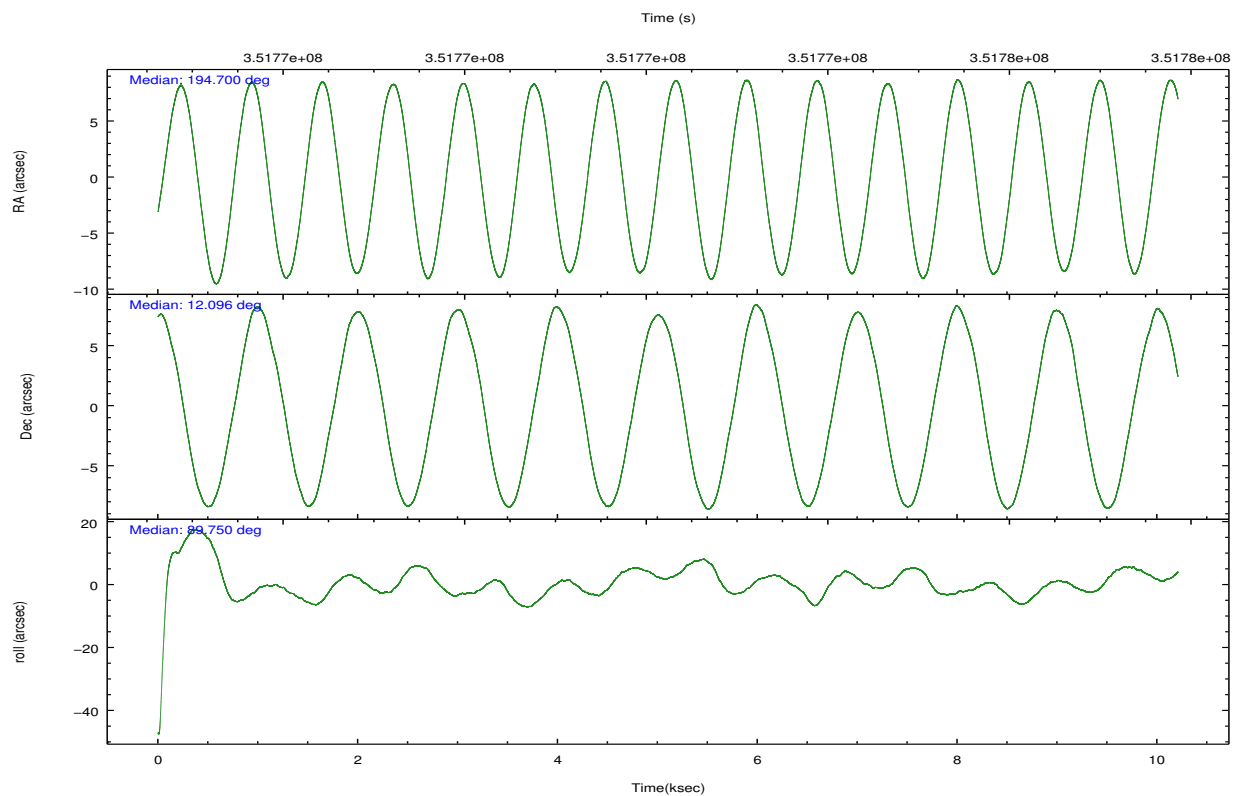
	ccd 5	ccd 6	ccd 7	ccd 8
grade 0 events	8520	3036	3686	6704
	8%	4%	5%	7%
grade 1 events	261	47	108	76
	0%	0%	0%	0%
grade 2 events	15670	1690	7499	5662
	15%	2%	10%	6%
grade 3 events	2259	829	3343	2408
	2%	1%	4%	2%
grade 4 events	2215	795	3223	2275
	2%	1%	4%	2%
grade 5 events	7482	2607	7554	3896
	7%	3%	10%	4%
grade 6 events	25261	1558	17637	6279
	25%	2%	24%	6%
grade 7 events	36541	62684	28416	64588
	37%	85%	39%	70%

2.2 Compared Parameters

Parameter	Planned	Actual	Parameter	Planned	Actual
Instrument	ACIS	ACIS	Obspar format version number	7	7
Detector	ACIS-5678	ACIS-5678	Obspar file type	PREDICTED	ACTUAL
Grating	NONE	NONE	Obspar update status	NONE	UPDATED
Data mode	VFAINT	VFAINT	Number of optional ACIS chips dropped	0	0
Observation mode	POINTING	POINTING	On-chip summing requested	N	N
[deg] Pointing RA	194.714118	194.6999402554627	Subarray requested	NONE	NONE
[deg] Pointing Dec	12.072561	12.09613873393582	Alternating exposures requested	N	N
[deg] Pointing Roll	89.582091	89.74168980371476	[s] Primary exposure time	0.000000	3.1
[mm] SIM focus pos	-0.684267	-0.6828225247311905			
[mm] SIM defocus	0	0.001444936568705701			
[mm] SIM translation stage pos	-190.132523	-190.1425803651734			
[mm] SIM translation stage offset	0	0.01005778216563158			
[s] Observation start time (MET)	351768048.184000	351766814.06362			
Observation start date	2009-02-23T09:19:42	2009-02-23T09:00:14			
[s] Observation end time (MET)	351777348.184000	351778054.21417			
Observation end date	2009-02-23T11:54:42	2009-02-23T12:07:34			
Read mode	TIMED	TIMED			

2.3 Aspect



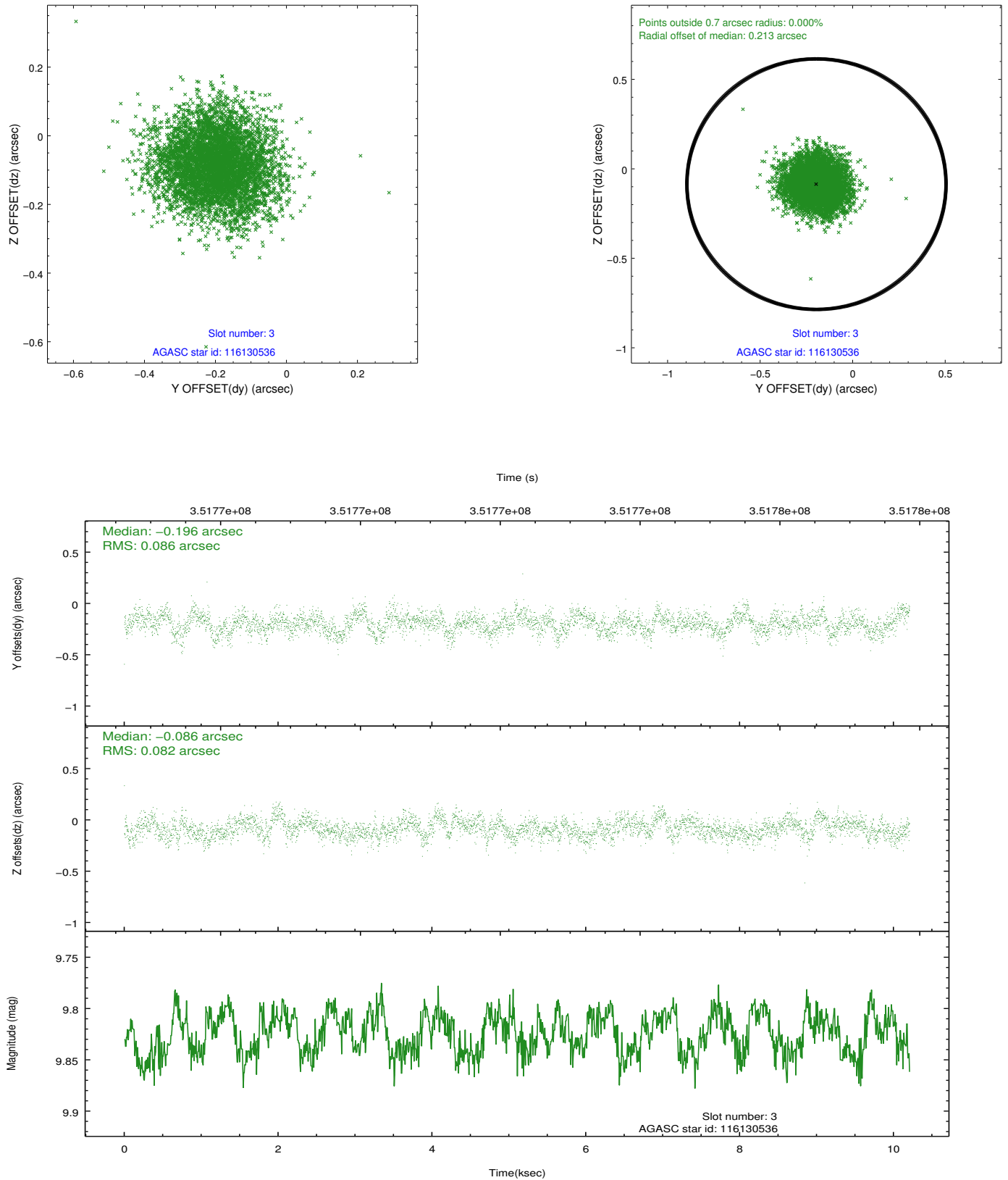


Slot Statistics

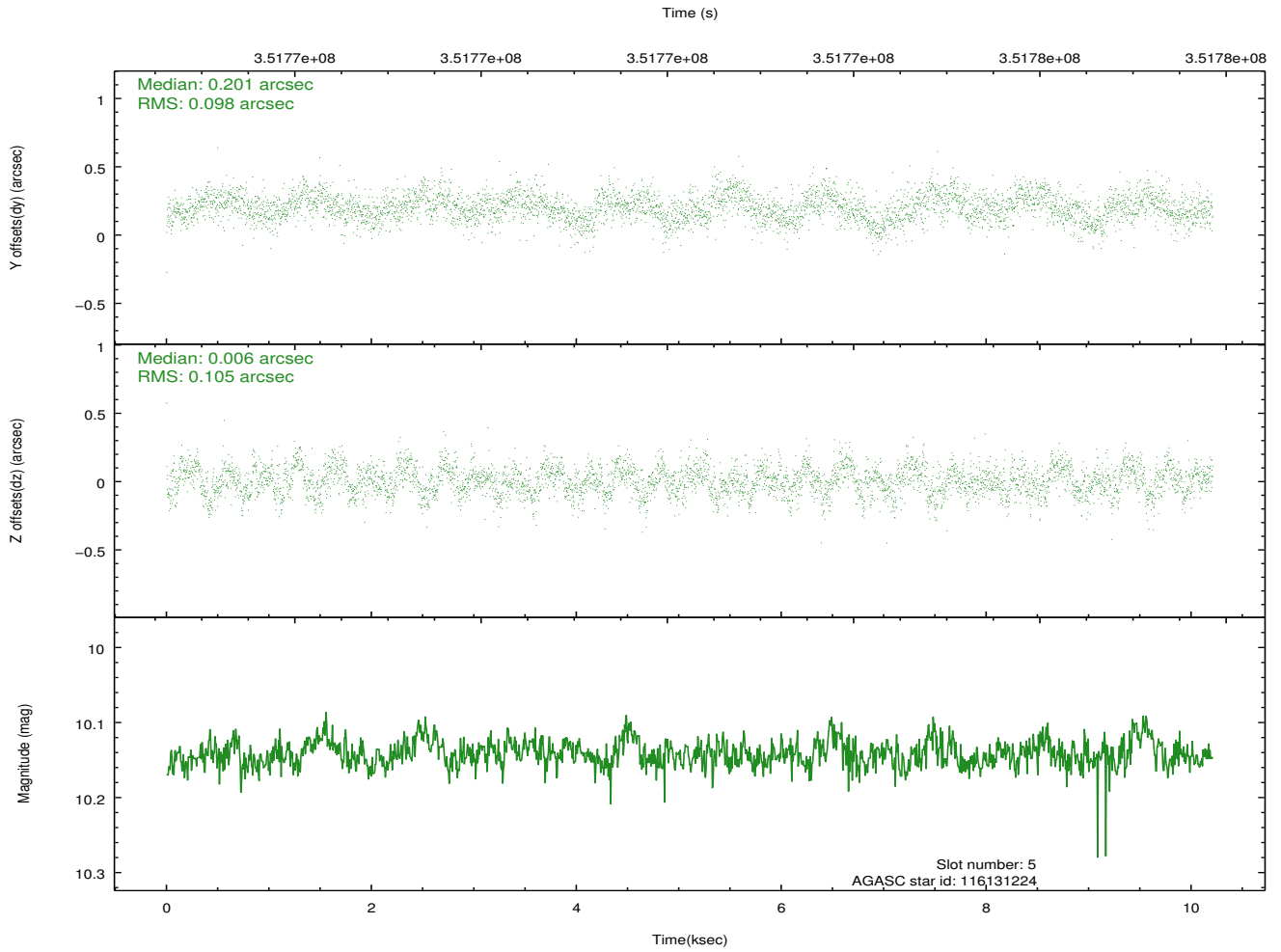
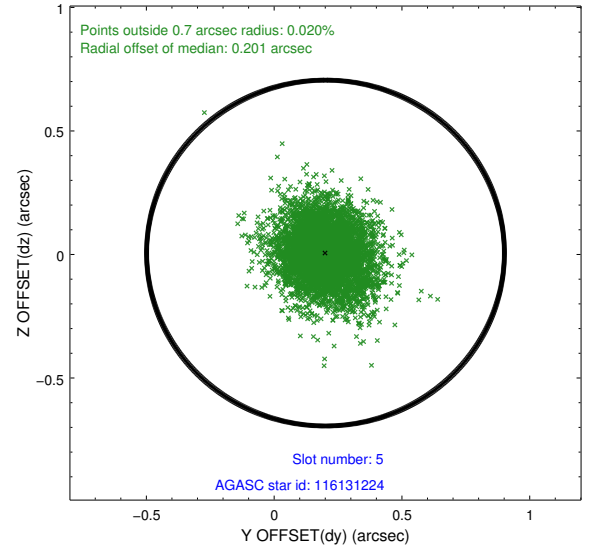
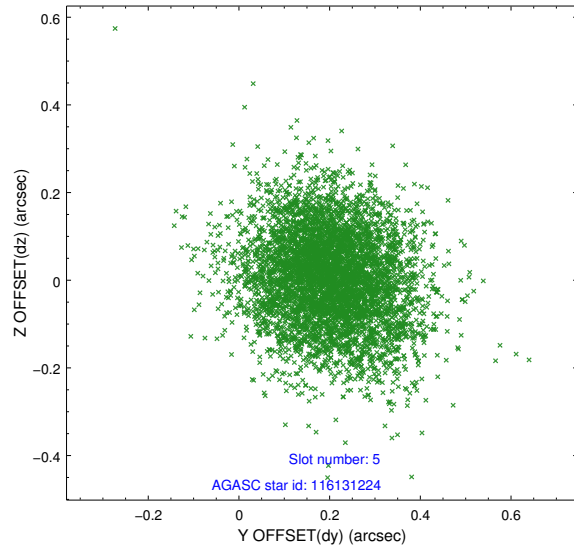
slot	status	id	mag	n_pts	med_dy	med_dz	dr1	dr2	ra	dec	mean_y	mean_z
0	FID	ACIS-S-2	6.96	2489	-0.067	-0.059	0.006	0.011	0.000000	0.000000	-766.94	-1735.65
1	FID	ACIS-S-4	7.04	2490	0.217	0.048	0.005	0.008	0.000000	0.000000	2146.37	172.42
2	FID	ACIS-S-5	7.07	2490	-0.181	0.019	0.006	0.011	0.000000	0.000000	-1819.25	166.62
3	GUIDE	116130536	9.82	4959	-0.196	-0.086	0.128	0.202	194.547696	11.579346	-1780.26	574.58
4	OMITTED		0.00	0	0.000	0.000	0.000	0.000	0.000000	0.000000	0.00	0.00
5	GUIDE	116131224	10.14	4974	0.201	0.006	0.152	0.248	194.423370	11.433878	-2306.35	1010.47
6	GUIDE	116131856	9.82	4969	0.081	0.075	0.146	0.230	194.641585	11.634019	-1581.41	245.19
7	GUIDE	116136392	9.56	4964	-0.088	0.001	0.111	0.177	194.414696	12.356603	1014.72	1060.82

2.4 Star Slots

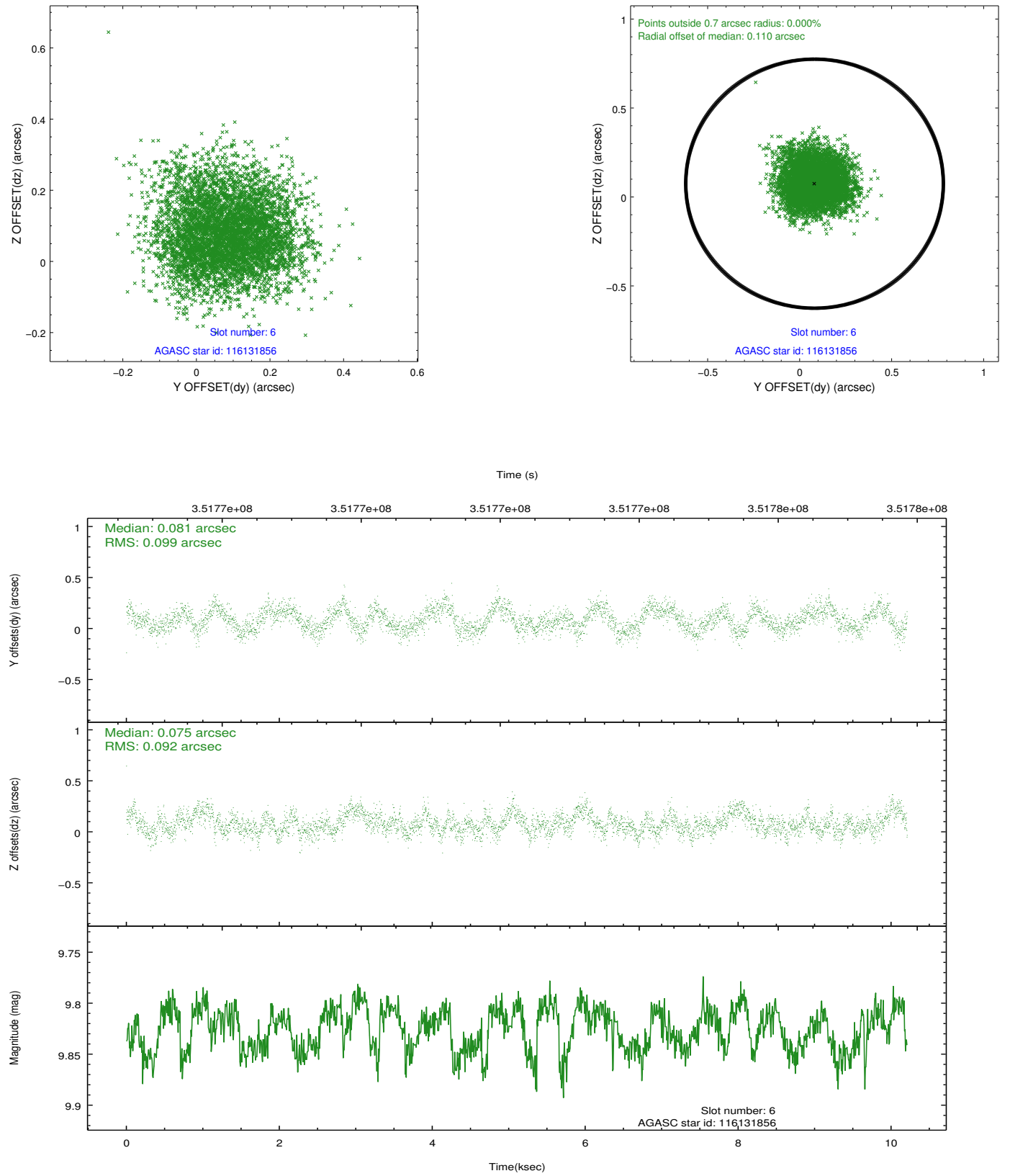
2.4.1 Slot 3



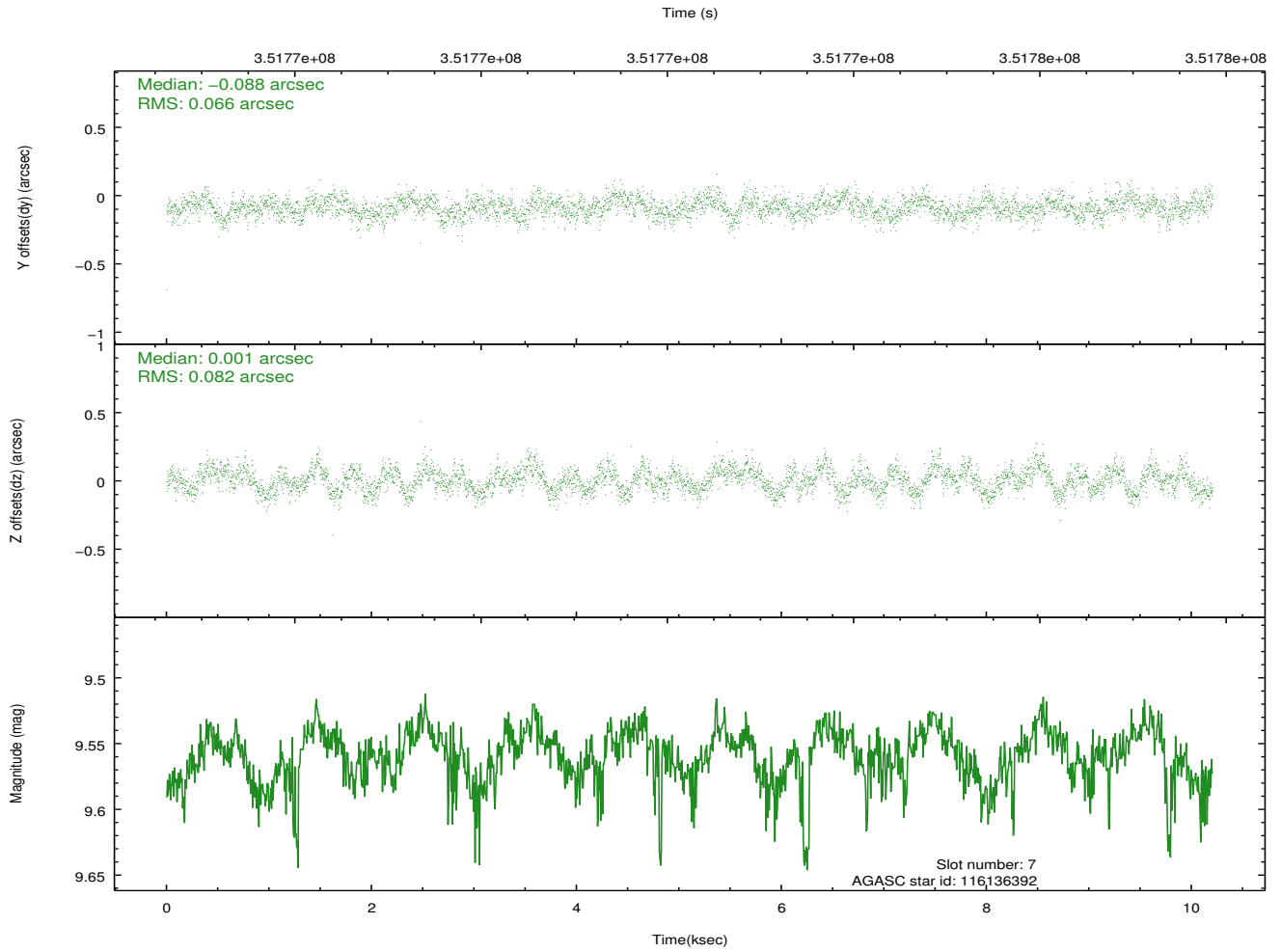
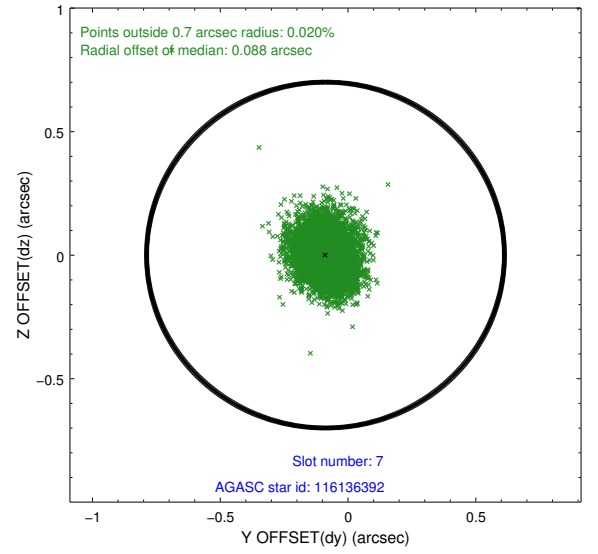
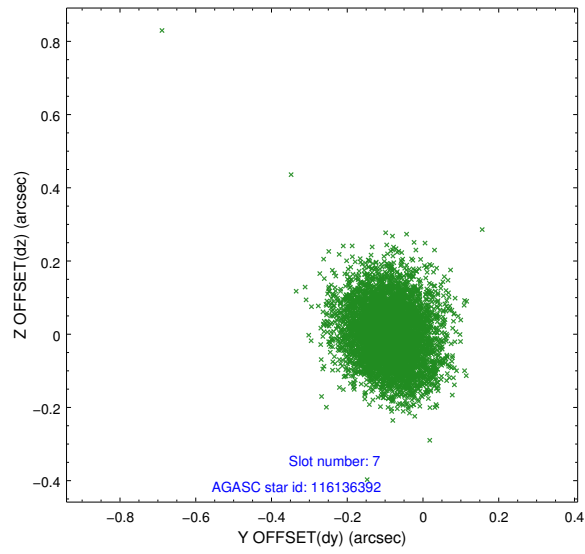
2.4.2 Slot 5



2.4.3 Slot 6

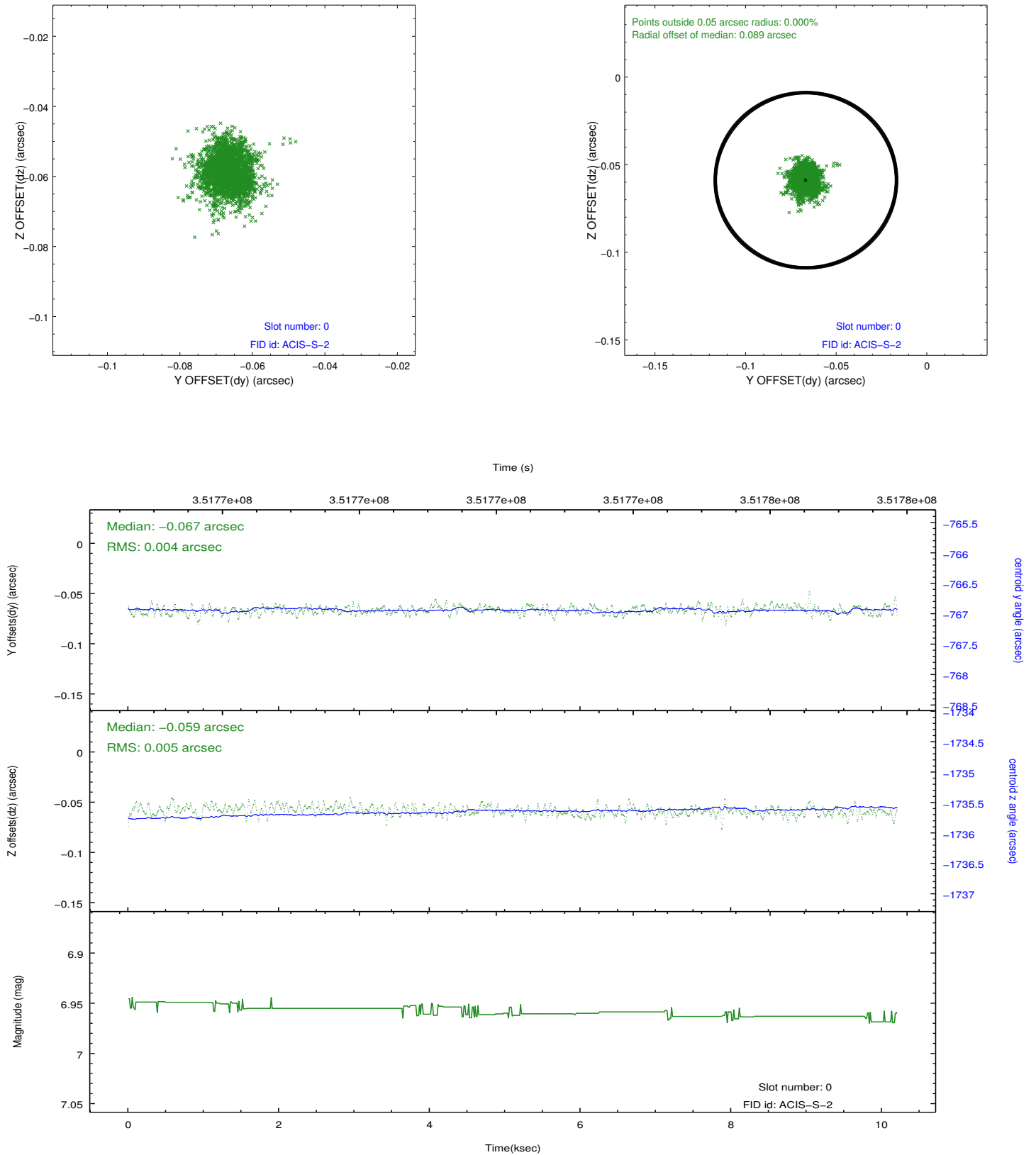


2.4.4 Slot 7

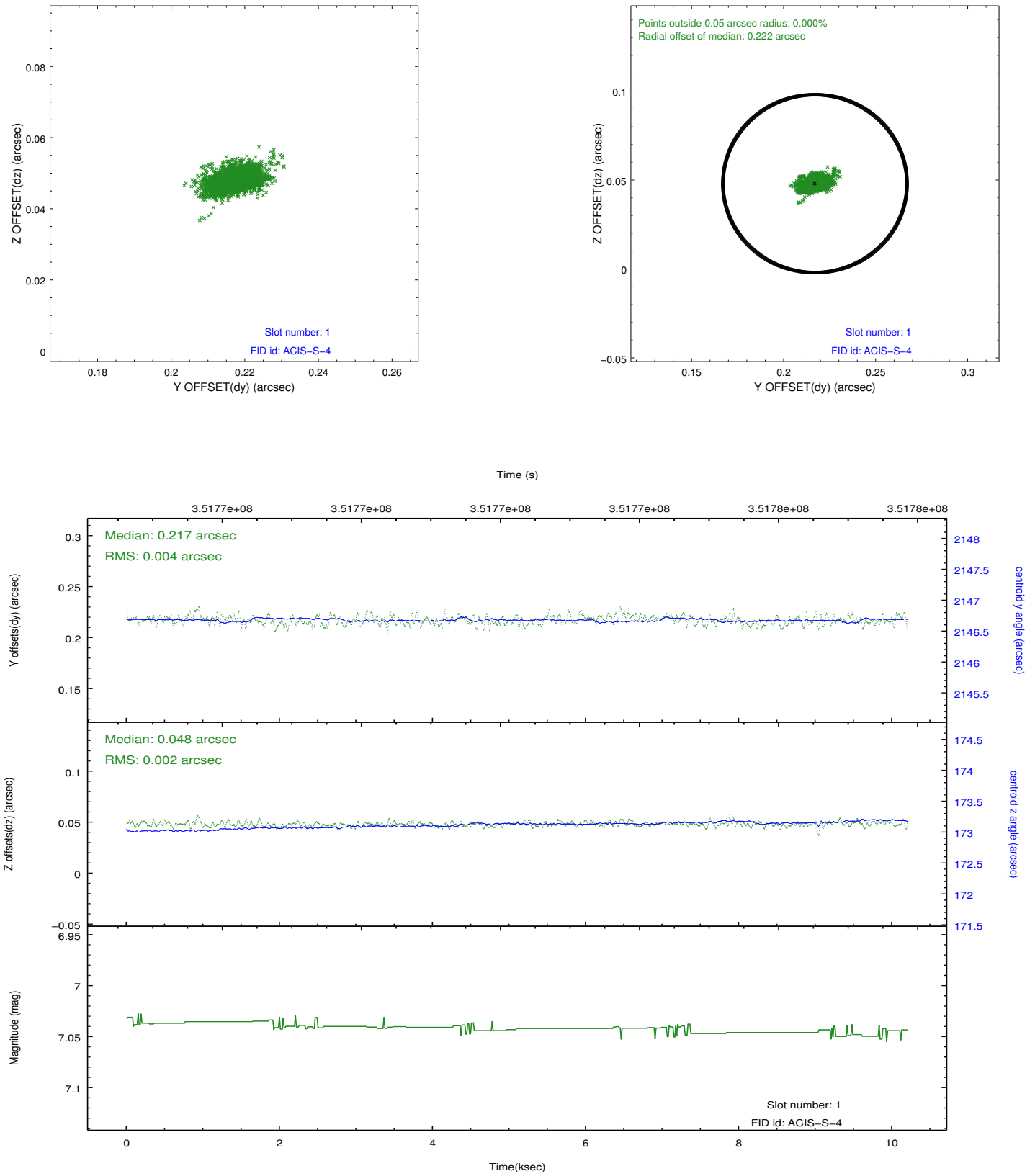


2.5 FID Slots

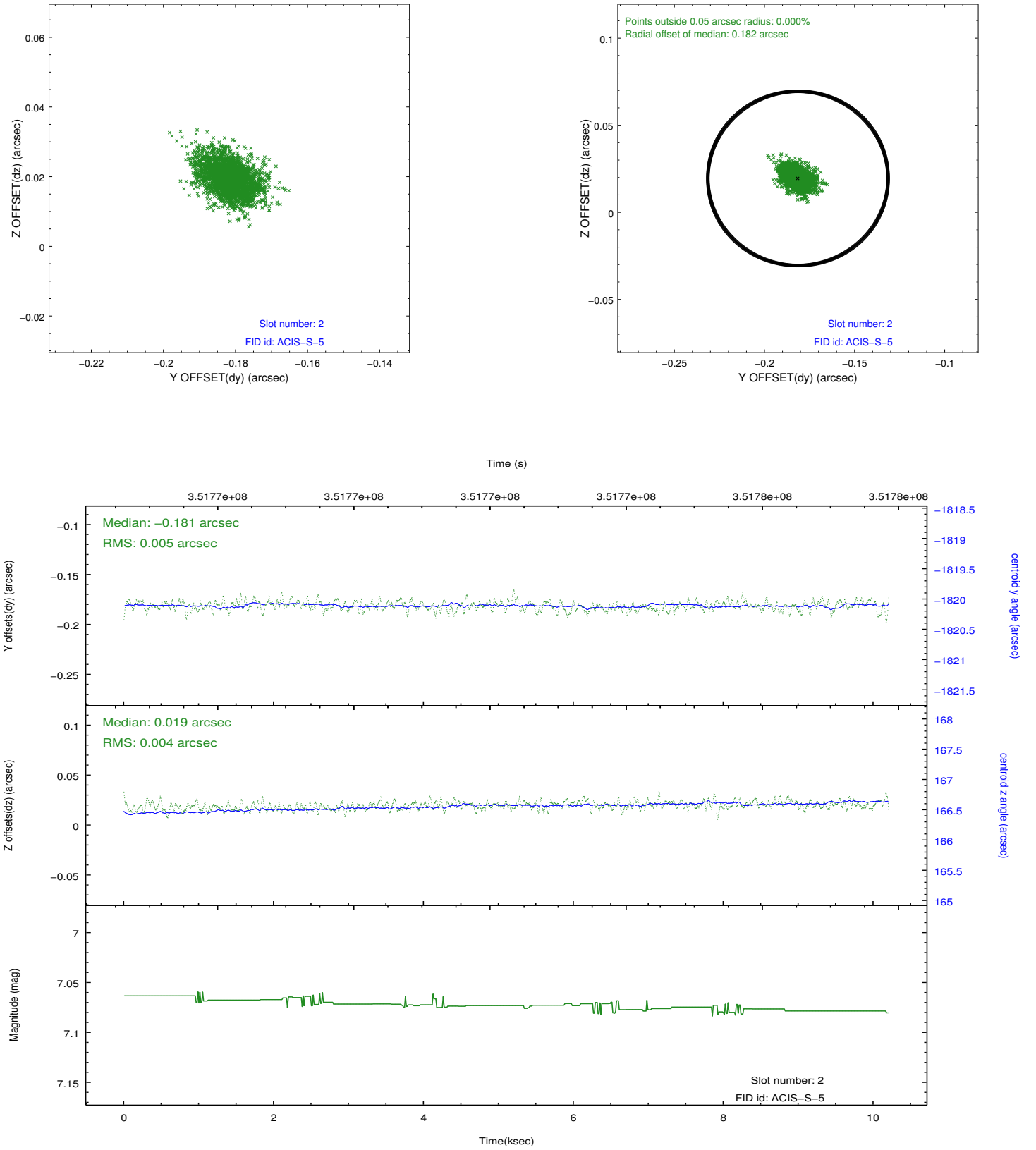
2.5.1 Slot 0



2.5.2 Slot 1



2.5.3 Slot 2



A Summary

A.1 Status

V&V Scientist	Jen Lauer
V&V Date (YYYY-MM-DD)	2012.06.06
V&V Edition	1
V&V Disposition and Status	OK
V&V Charge Time	9.34340007

A.2 Comments

The guide star in slot 4 was removed from the aspect solution due to poor data quality. The aspect solution is improved by removing this guide star from the solution.