

V&V Reference Report

L2 ASCDS Version : 8.4.5

Observation 10715 - L2 Version 2
Chandra X-Ray Center

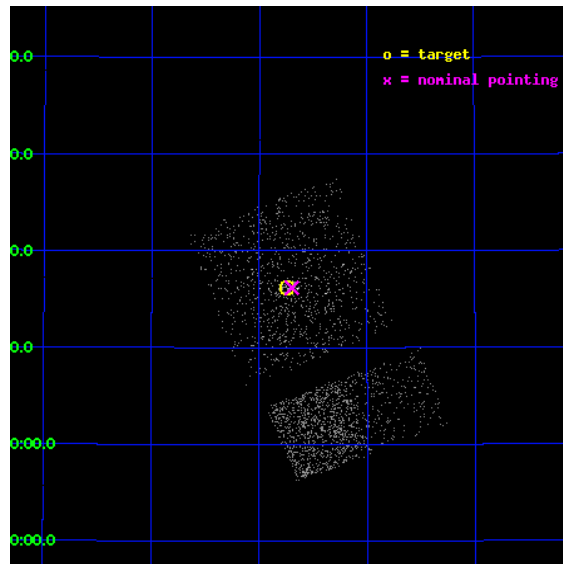
L2 Processing Date : Jun 13 2012

Contents

1	Front	2
2	OBI Primary	3
2.1	OBI	3
2.1.1	Images	3
2.1.2	Bias	3
2.1.3	Parameters	4
2.1.4	Events	4
2.2	Compared Parameters	5
2.3	Aspect	6
2.4	Star Slots	9
2.4.1	Slot 3	9
2.4.2	Slot 4	10
2.4.3	Slot 5	11
2.4.4	Slot 6	12
2.4.5	Slot 7	13
2.5	FID Slots	14
2.5.1	Slot 0	14
2.5.2	Slot 1	15
2.5.3	Slot 2	16
3	OBI Secondary	17
3.1	OBI	17
3.1.1	Images	17
3.1.2	Bias	17
3.1.3	Parameters	18
3.1.4	Events	18
A	Summary	19
A.1	Status	19
A.2	Comments	19

1 Front

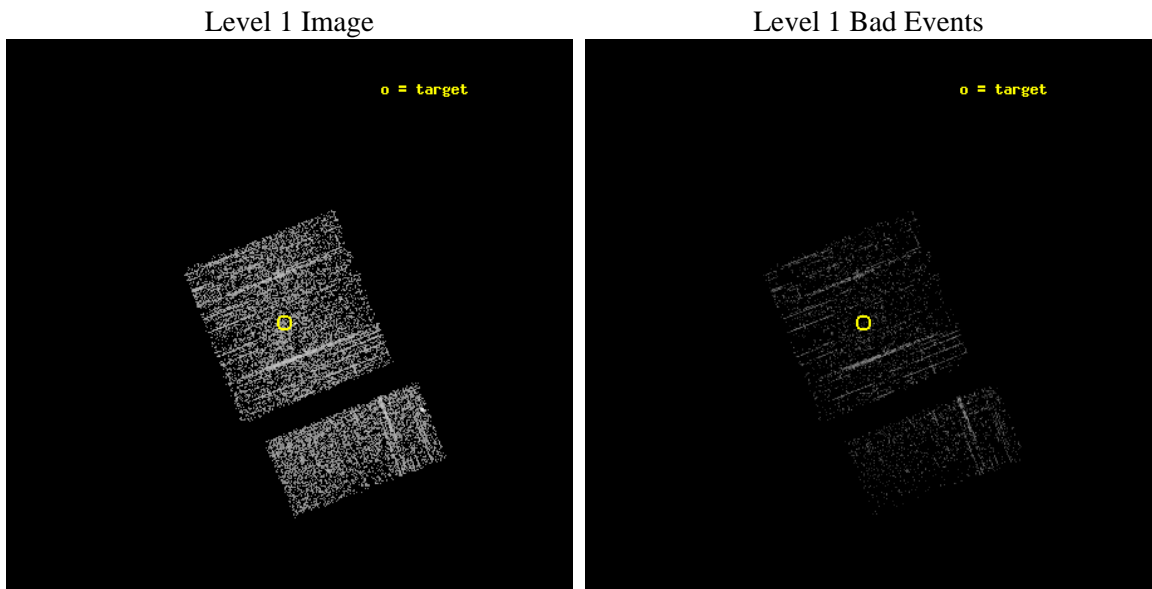
seq_num	600765	Sequence number
obs_id	10715	Observation id
title	Black Hole X-ray Novae in M31	Proposal title
observer	Dr. Stephen Murray	Principal investigator
object	M31	Source name
dtcycle	0	
cycle	P	events are from which exps? P[rimary] S[econdar
ra_targ	10.685	Observer's specified target RA [deg]
dec_targ	41.268972	Observer's specified target Dec [deg]
ra_nom	10.674199291521	Nominal RA [deg]
dec_nom	41.269543550724	Nominal Dec [deg]
roll_nom	158.69437450101	Nominal Roll [deg]
revision	2	Processing version of data
ontime	937.739348948	Sum of GTIs [s]
livetime	147.62279327295	Livetime [s]
ontime0	937.739348948	Sum of GTIs [s]
ontime1	937.73933911324	Sum of GTIs [s]
ontime2	937.739348948	Sum of GTIs [s]
ontime3	937.739348948	Sum of GTIs [s]
ontime6	937.739348948	Sum of GTIs [s]
ontime7	937.739348948	Sum of GTIs [s]
l2events	2753	Number of level 2 events



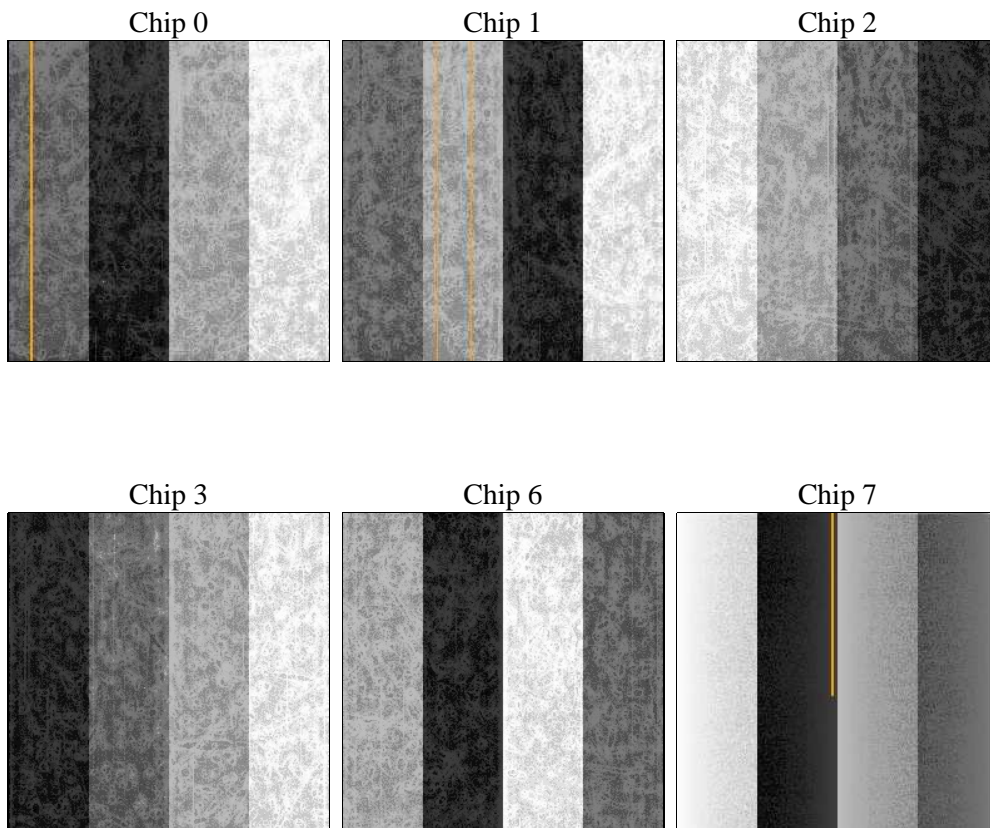
2 OBI Primary

2.1 OBI

2.1.1 Images



2.1.2 Bias



2.1.3 Parameters

obi_num	0	Obi number	sched_exp_time	5000.000000	[s] Scheduled observation exposure time
ascdsver	8.4.5	Processing system revision	ontime	937.739348948	Sum of GTIs [s]
caldsver	4.4.10	 	ontime0	937.739348948	Sum of GTIs [s]
date	2012-06-13T18:44:58	Date and time of file creation	ontime1	937.73933911324	Sum of GTIs [s]
revision	2	Processing version of data	ontime2	937.739348948	Sum of GTIs [s]
			ontime3	937.739348948	Sum of GTIs [s]
			ontime6	937.739348948	Sum of GTIs [s]
			ontime7	937.739348948	Sum of GTIs [s]
			l1events	24600	Number of level 1 events

2.1.4 Events

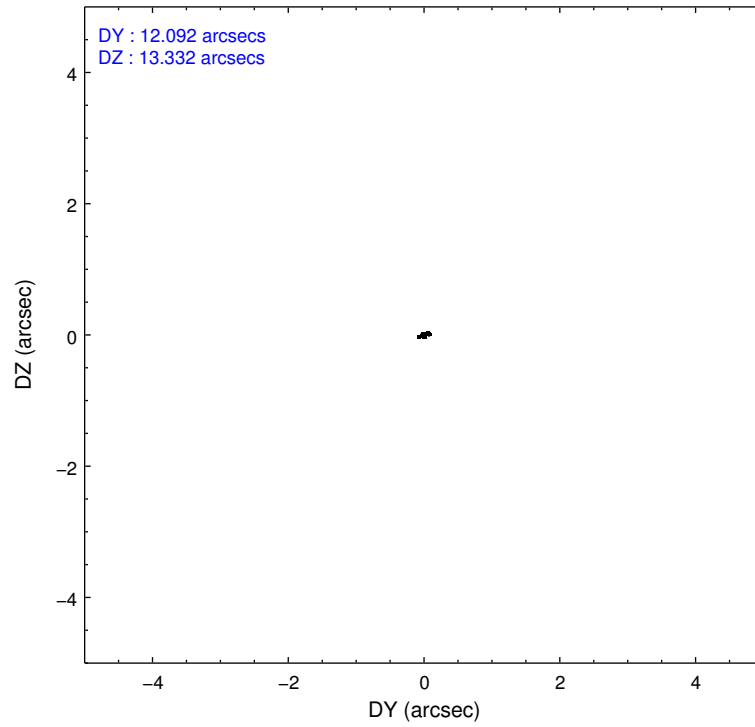
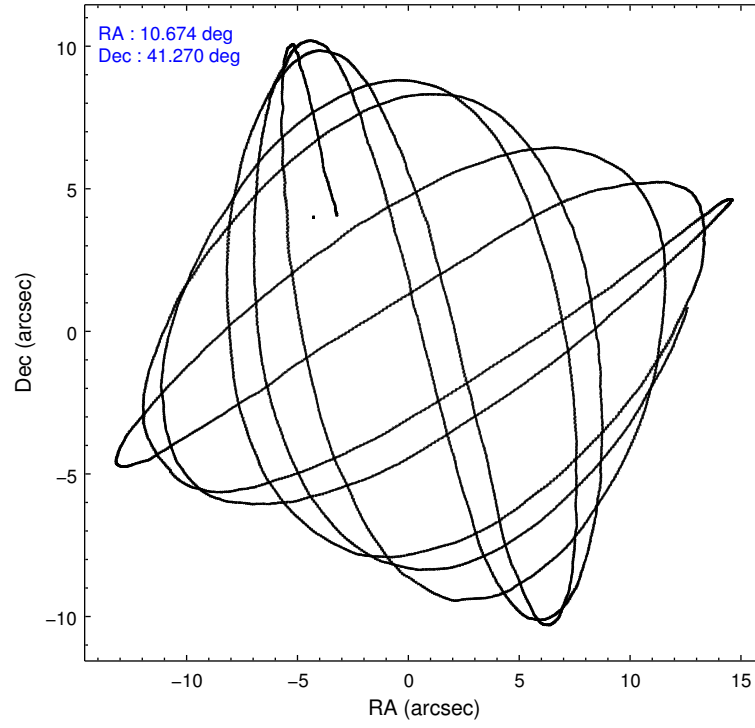
	ccd 0	ccd 1	ccd 2	ccd 3	ccd 6	ccd 7
level 1 events	3556	4206	4398	4319	4617	3504
rejected events	3219	3793	3848	3916	4059	2341
rejected %	90%	90%	87%	90%	87%	66%

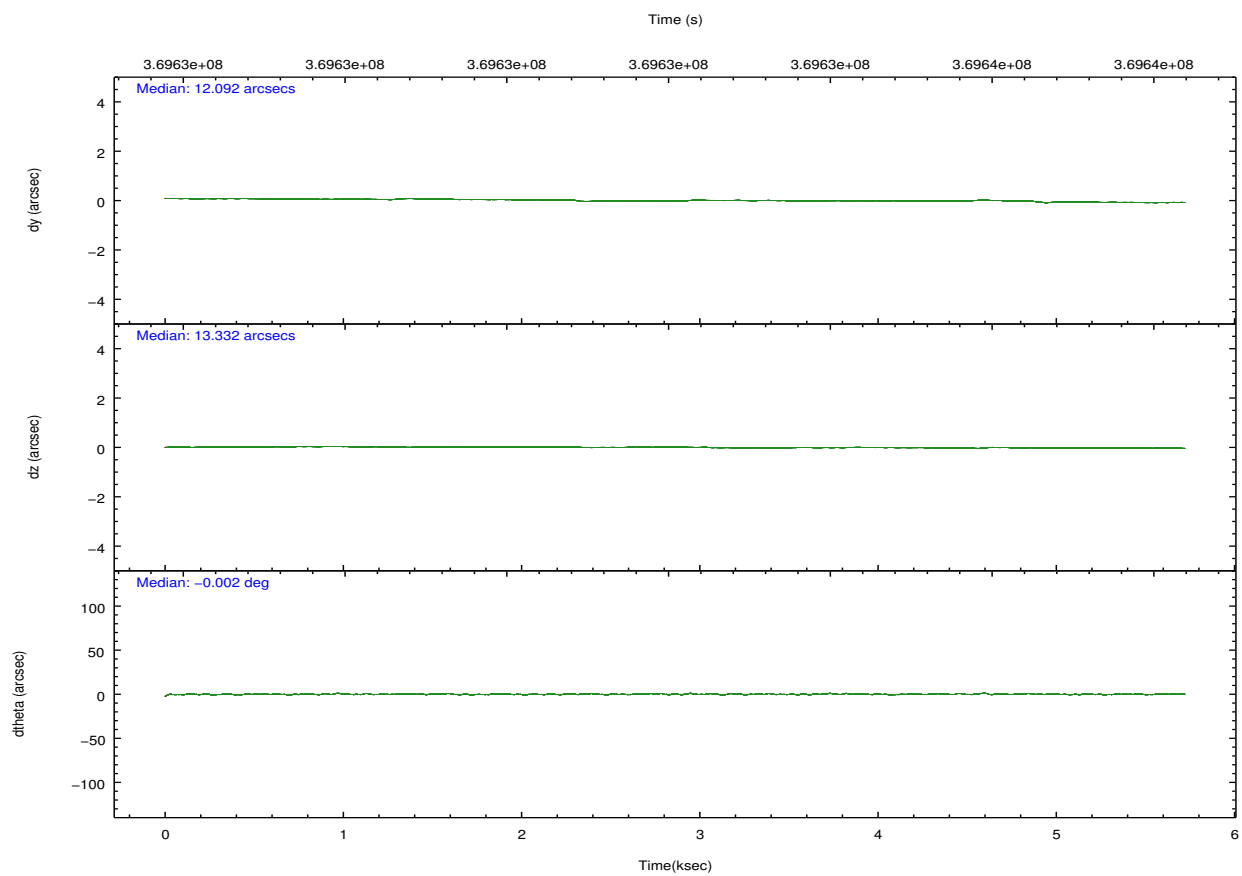
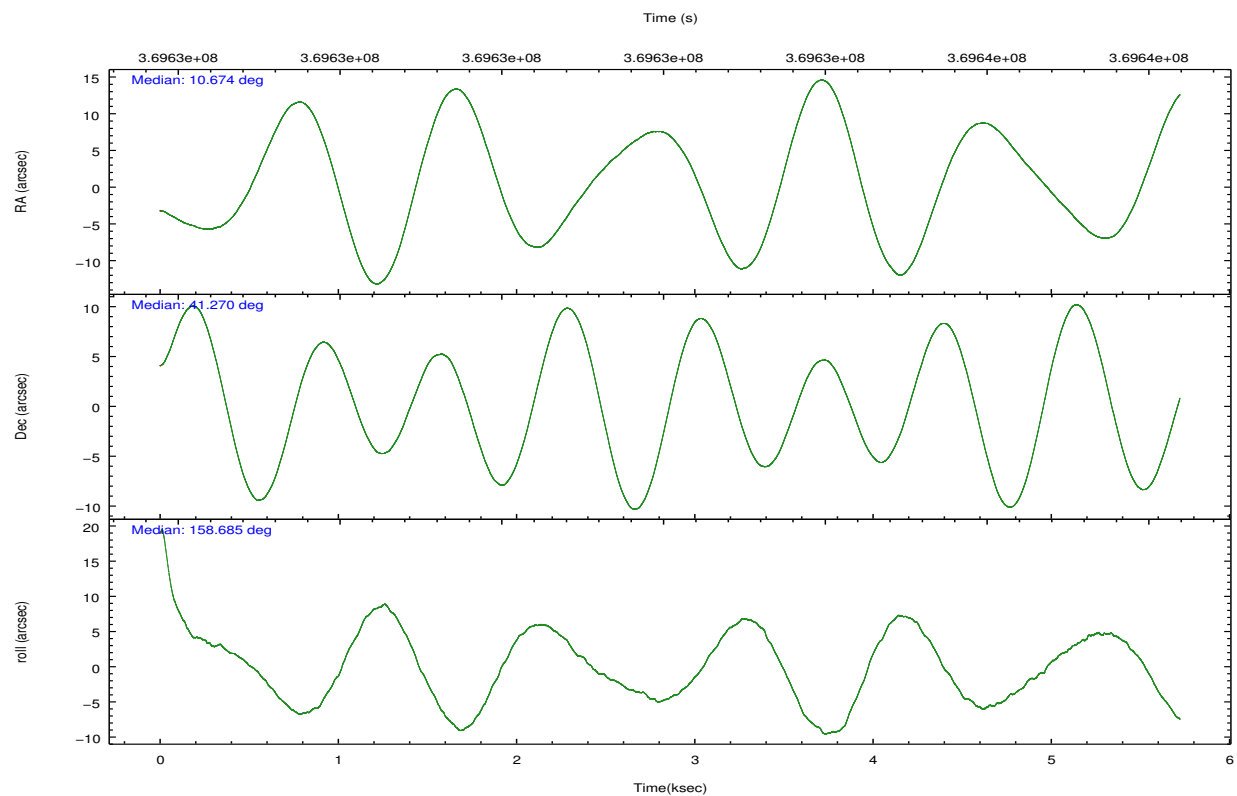
	ccd 0	ccd 1	ccd 2	ccd 3	ccd 6	ccd 7
grade 0 events	96	160	277	166	313	143
	2%	3%	6%	3%	6%	4%
grade 1 events	2	1	6	4	2	3
	0%	0%	0%	0%	0%	0%
grade 2 events	76	70	99	87	100	244
	2%	1%	2%	2%	2%	6%
grade 3 events	40	50	49	50	34	119
	1%	1%	1%	1%	0%	3%
grade 4 events	51	62	57	25	42	108
	1%	1%	1%	0%	0%	3%
grade 5 events	127	100	109	142	157	303
	3%	2%	2%	3%	3%	8%
grade 6 events	75	74	73	80	76	555
	2%	1%	1%	1%	1%	15%
grade 7 events	3089	3689	3728	3765	3893	2029
	86%	87%	84%	87%	84%	57%

2.2 Compared Parameters

Parameter	Planned	Actual	Parameter	Planned	Actual
Instrument	ACIS	ACIS	Obspar format version number	7	7
Detector	ACIS-012367	ACIS-012367	Obspar file type	PREDICTED	ACTUAL
Grating	NONE	NONE	Obspar update status	NONE	UPDATED
Data mode	VFAINT	VFAINT	CCD I0 on	Y	Y
Observation mode	POINTING	POINTING	CCD I1 on	Y	Y
[deg] Pointing RA	10.710417	10.67419929152072	CCD I2 on	Y	Y
[deg] Pointing Dec	41.273797	41.2695435507238	CCD I3 on	Y	Y
[deg] Pointing Roll	158.461769	158.694374501014	CCD S0 on	N	N
[s] Window start time (MET)	366249666.184000	366249666.184000	CCD S1 on	N	N
[s] Window stop time (MET)	366854406.184000	366854406.184000	CCD S2 on	O2	Y
[mm] SIM focus pos	-0.782348	-0.7809083437167272	CCD S3 on	O1	Y
[mm] SIM defocus	0	0.001439871863259334	CCD S4 on	N	N
[mm] SIM translation stage pos	-233.592463	-233.5899487761303	CCD S5 on	N	N
[mm] SIM translation stage offset	0	-0.002504226799430853	Number of optional ACIS chips dropped	0	0
[s] Observation start time (MET)	369630897.184000	369629624.23004	On-chip summing requested	N	N
Observation start date	2009-09-18T03:13:51	2009-09-18T02:53:44	Subarray requested	NONE	NONE
[s] Observation end time (MET)	369635897.184000	369636700.3179	Alternating exposures requested	Y	Y
Observation end date	2009-09-18T04:37:11	2009-09-18T04:51:40	[s] Primary exposure time	0.600000	0.6
Read mode	TIMED	TIMED	[s] Secondary exposure time	0.000000	3.2
			Duty cycle	5	5

2.3 Aspect



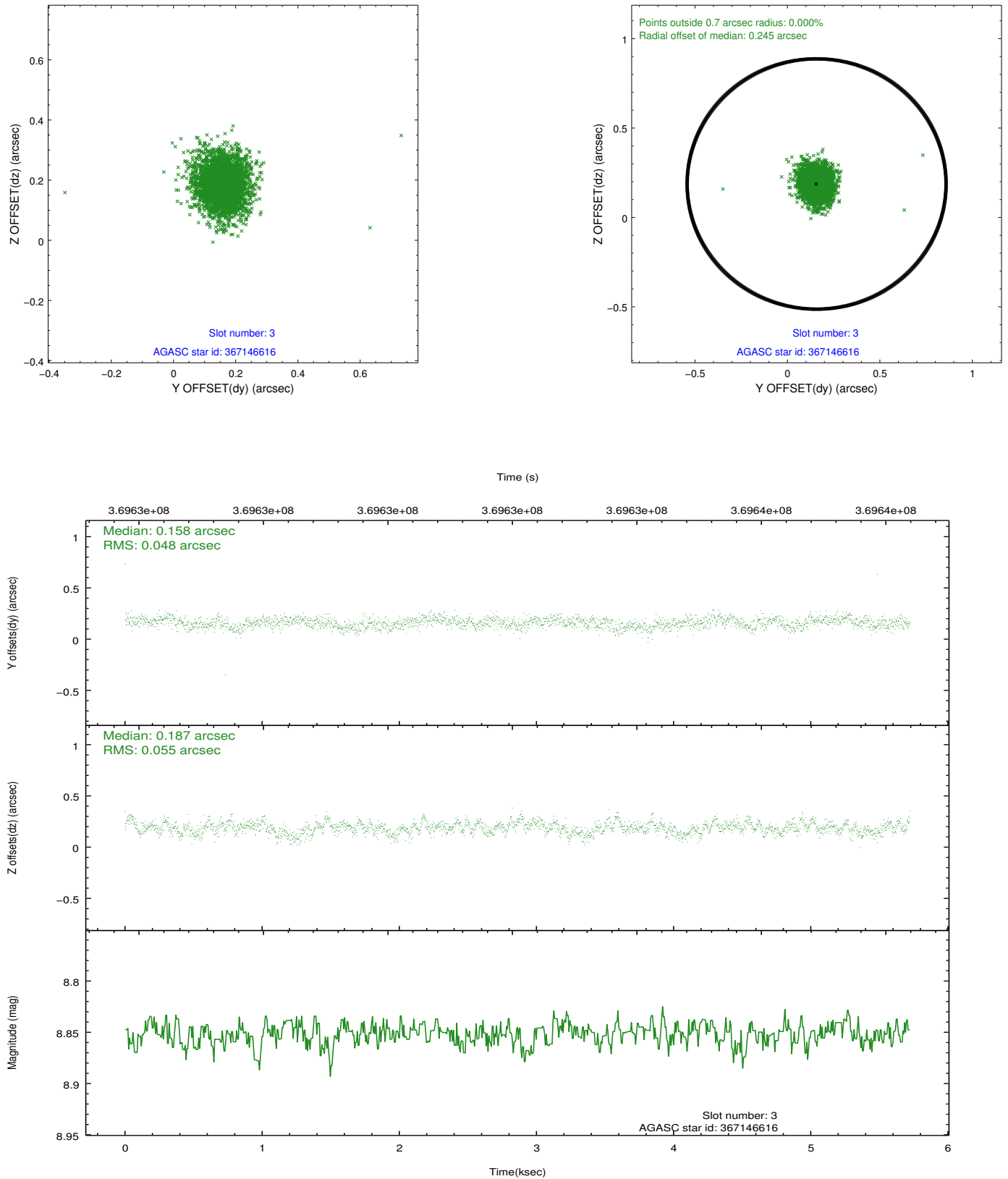


Slot Statistics

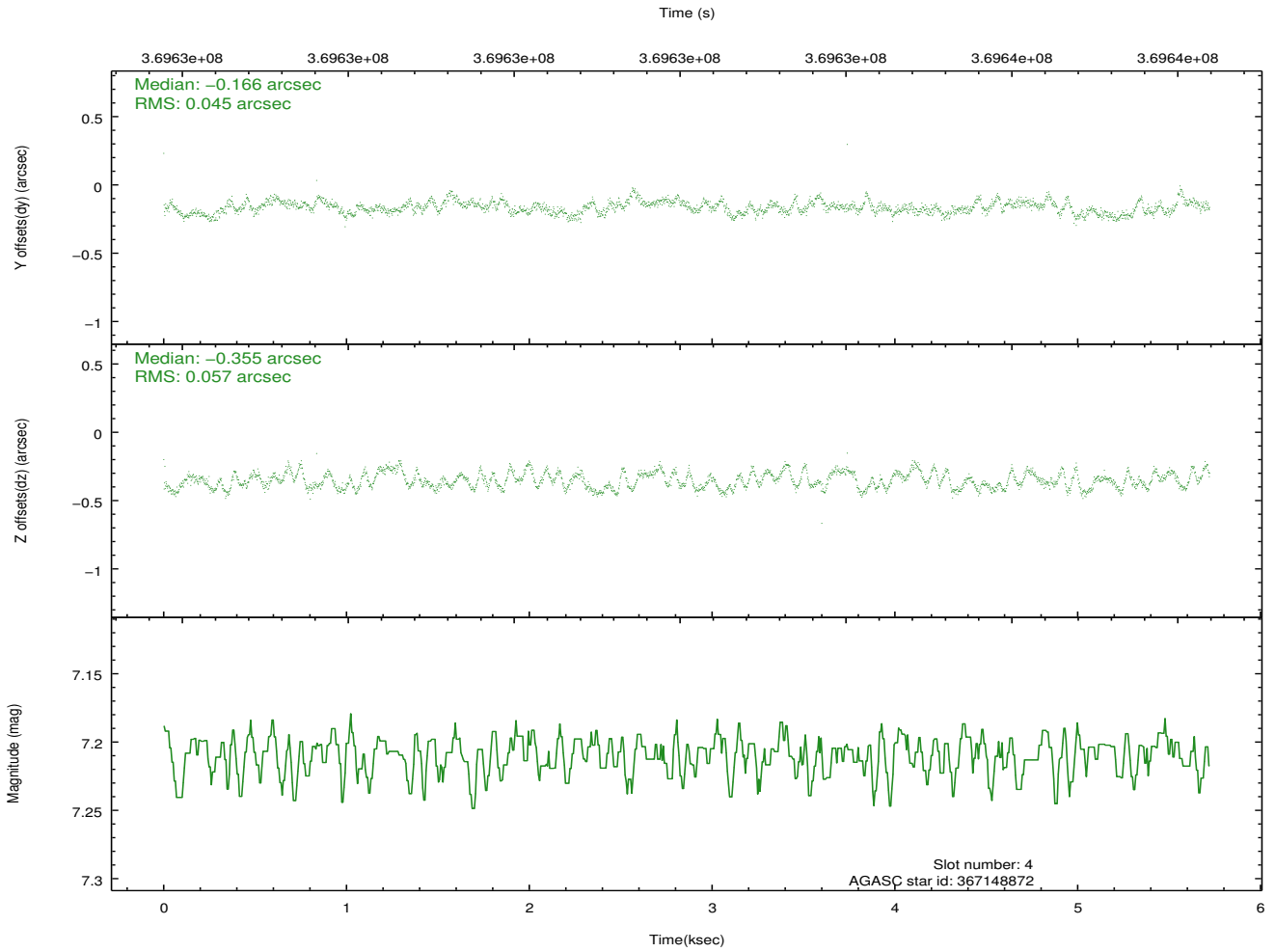
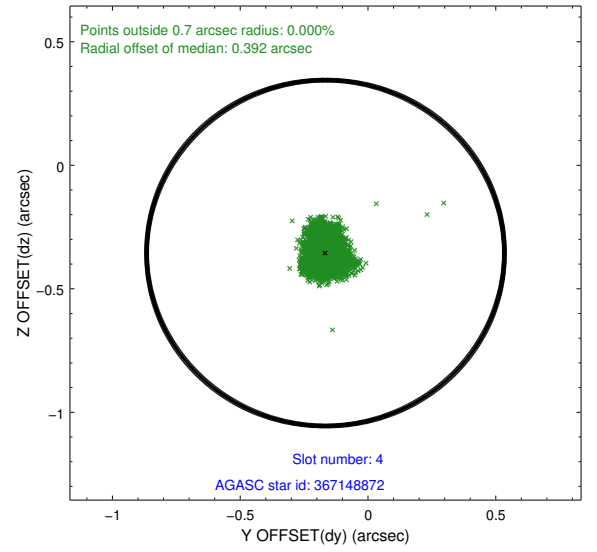
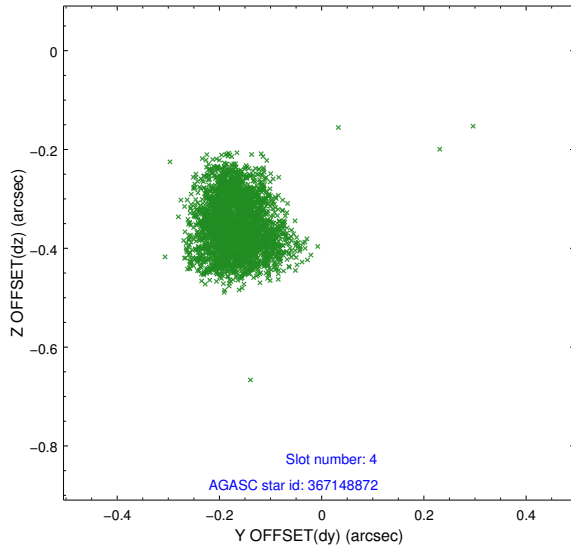
slot	status	id	mag	n_pts	med_dy	med_dz	dr1	dr2	ra	dec	mean_y	mean_z
0	FID	ACIS-I-1	7.07	1396	0.039	0.004	0.006	0.010	0.000000	0.000000	927.49	-836.83
1	FID	ACIS-I-5	7.07	1396	-0.191	0.053	0.006	0.011	0.000000	0.000000	-1820.29	1060.17
2	FID	ACIS-I-6	7.07	1396	0.061	0.014	0.006	0.011	0.000000	0.000000	391.90	1705.83
3	GUIDE	367146616	8.85	2792	0.158	0.187	0.075	0.125	11.418645	41.190163	-1892.10	-431.45
4	GUIDE	367148872	7.21	2791	-0.166	-0.355	0.078	0.117	10.505940	40.688258	-255.73	2165.39
5	GUIDE	367657896	9.03	2791	0.031	0.112	0.082	0.133	11.197765	41.313576	-1171.79	-619.47
6	GUIDE	367663272	9.28	2790	-0.108	0.006	0.091	0.145	10.656279	41.699429	698.20	-1371.11
7	GUIDE	367674552	8.85	2791	0.083	0.044	0.091	0.140	11.016238	41.570845	-372.64	-1298.64

2.4 Star Slots

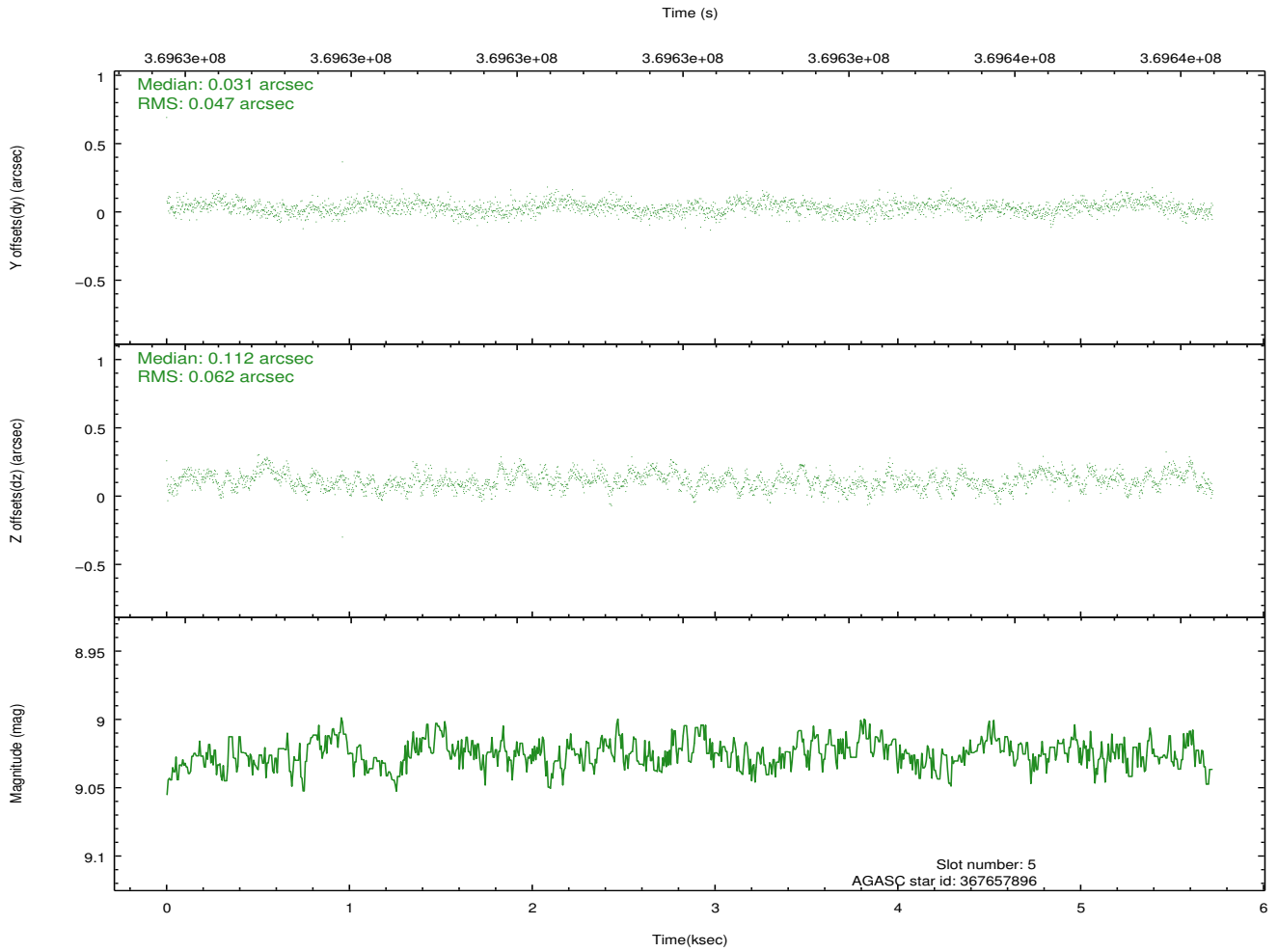
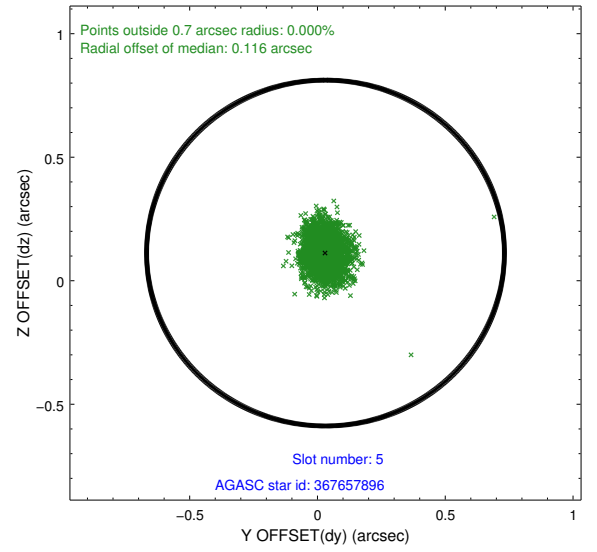
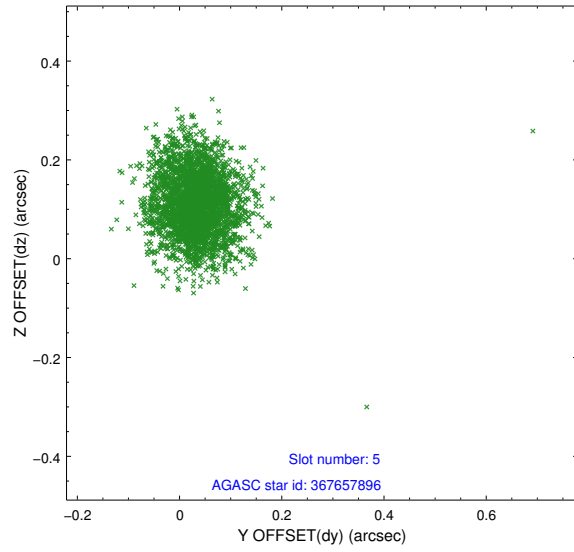
2.4.1 Slot 3



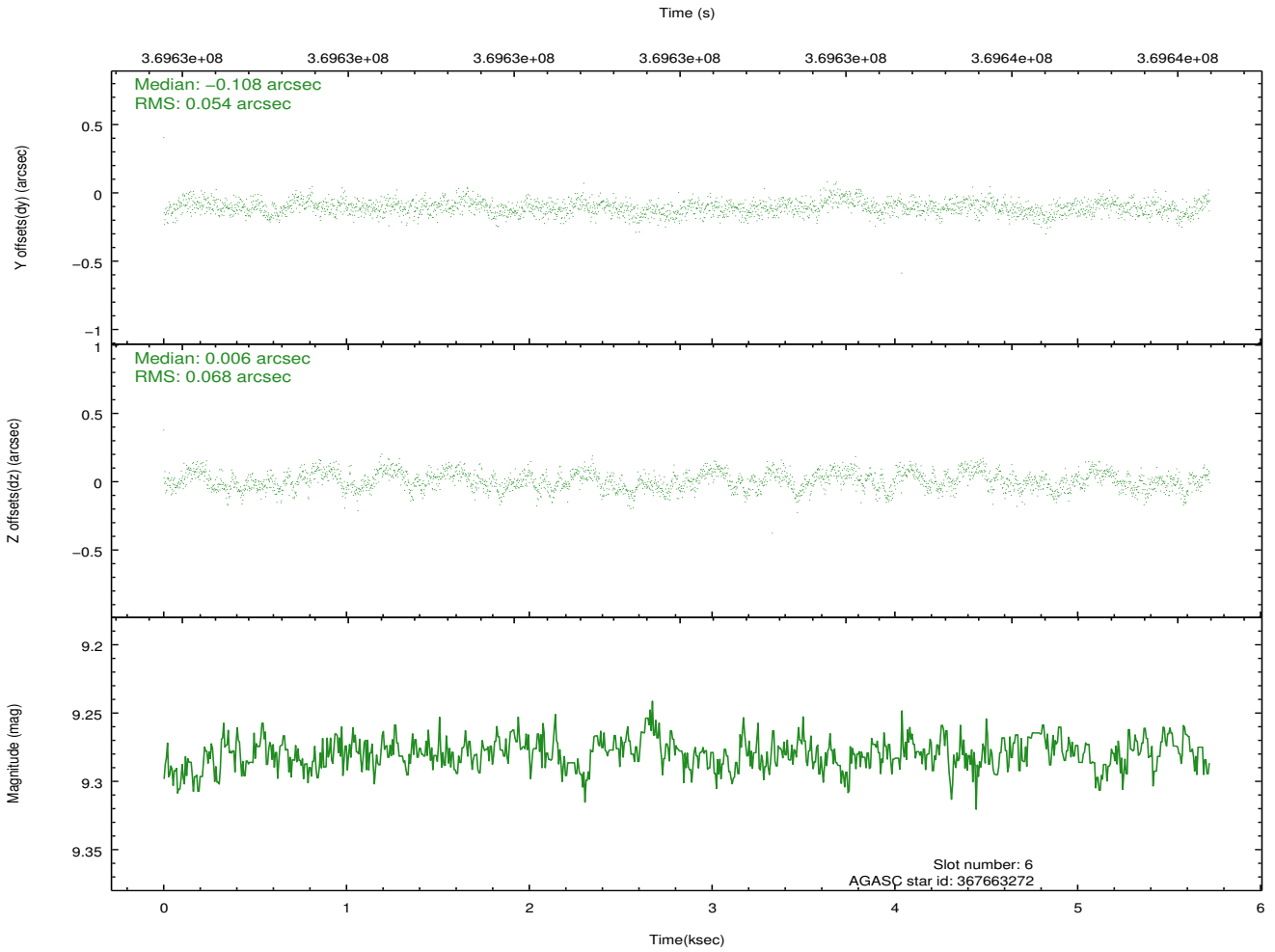
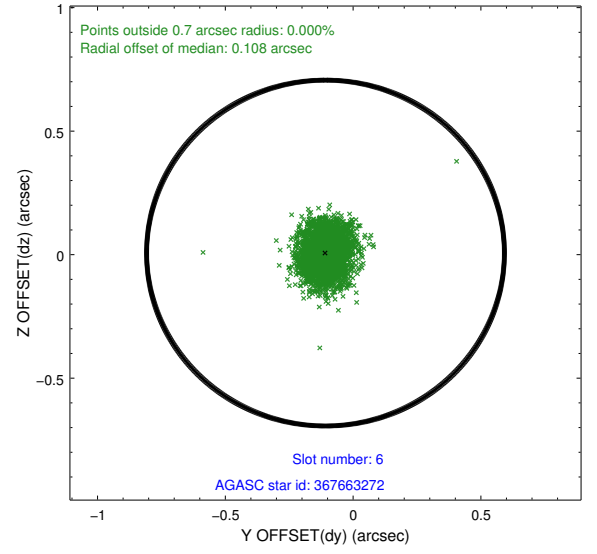
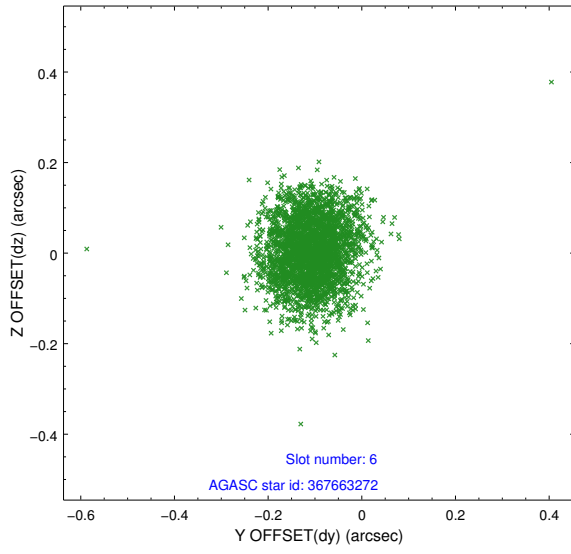
2.4.2 Slot 4



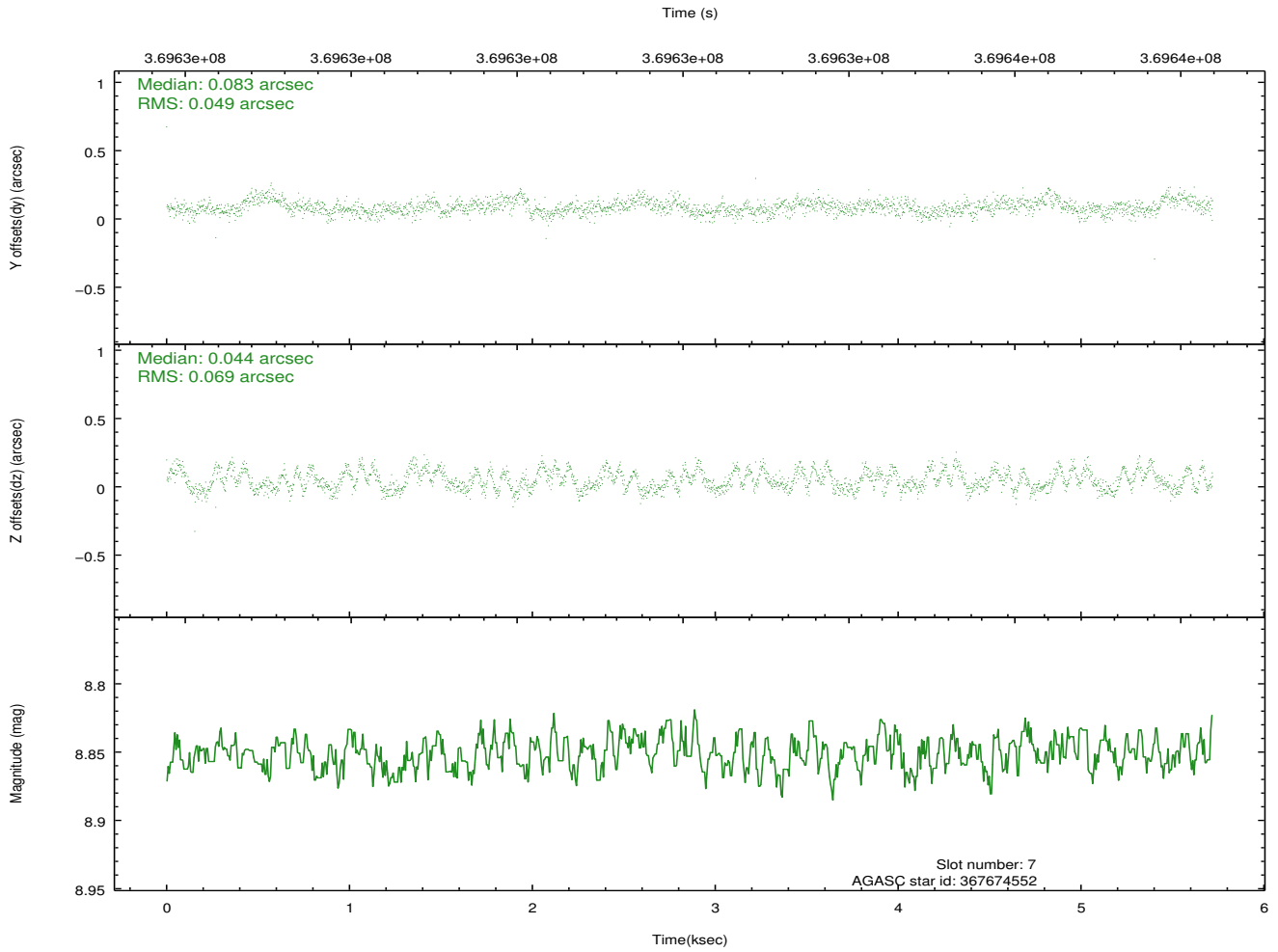
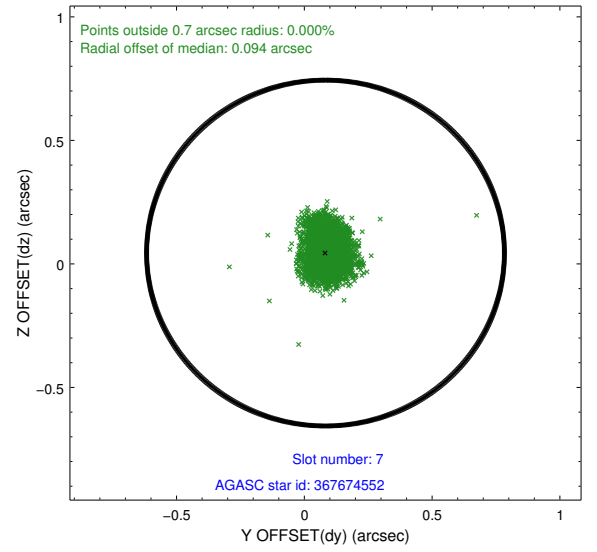
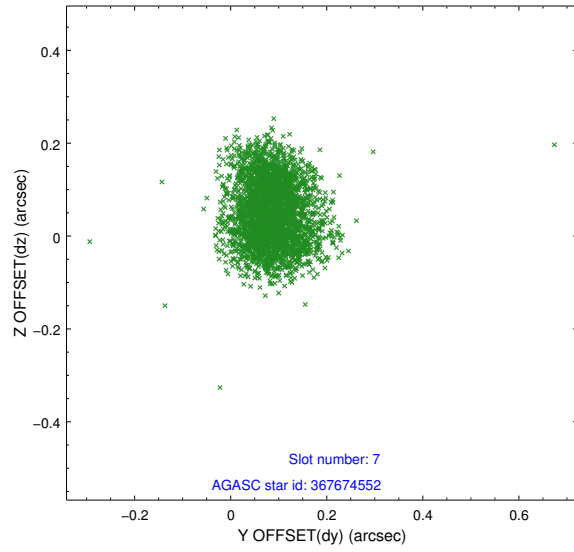
2.4.3 Slot 5



2.4.4 Slot 6

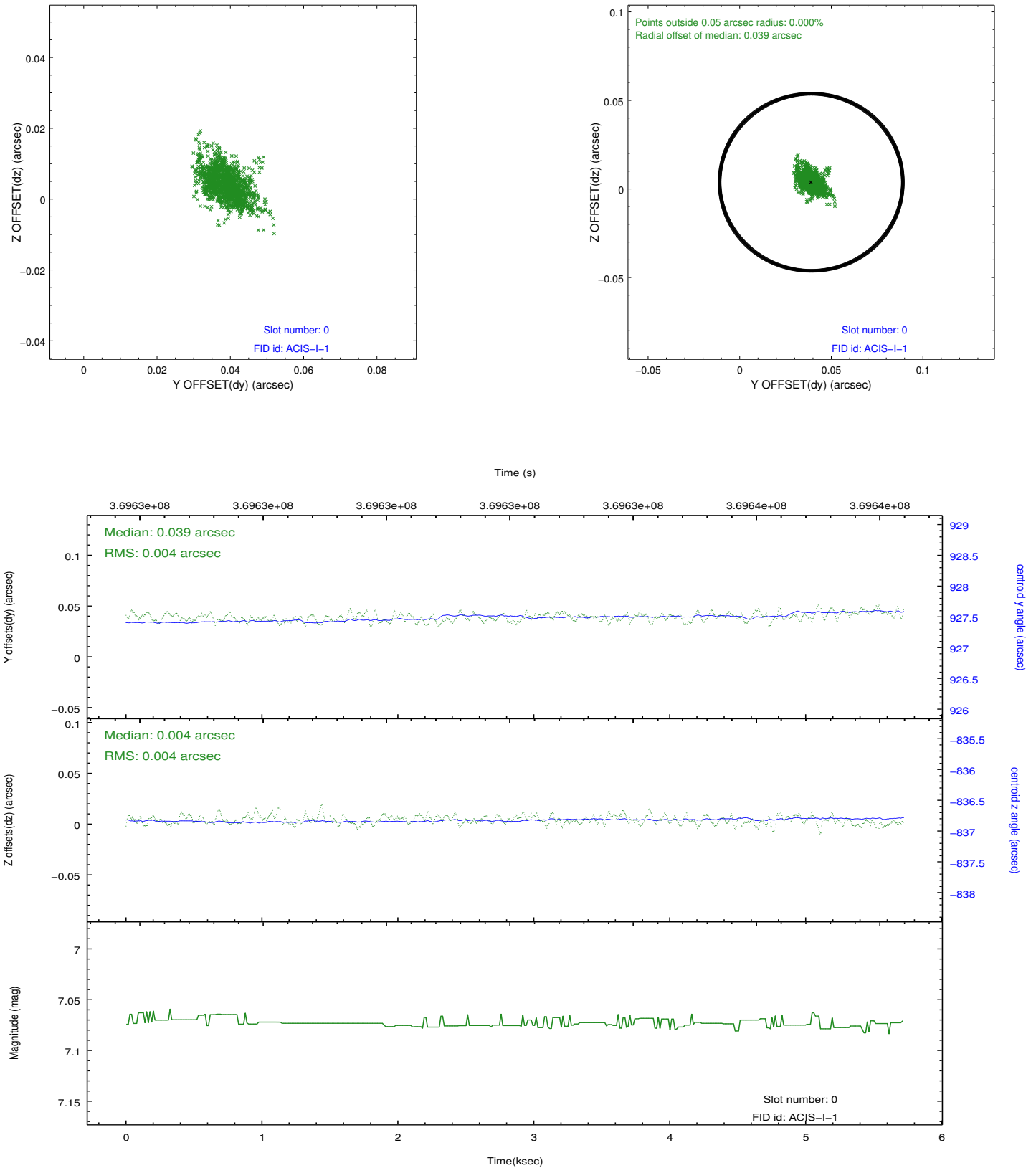


2.4.5 Slot 7

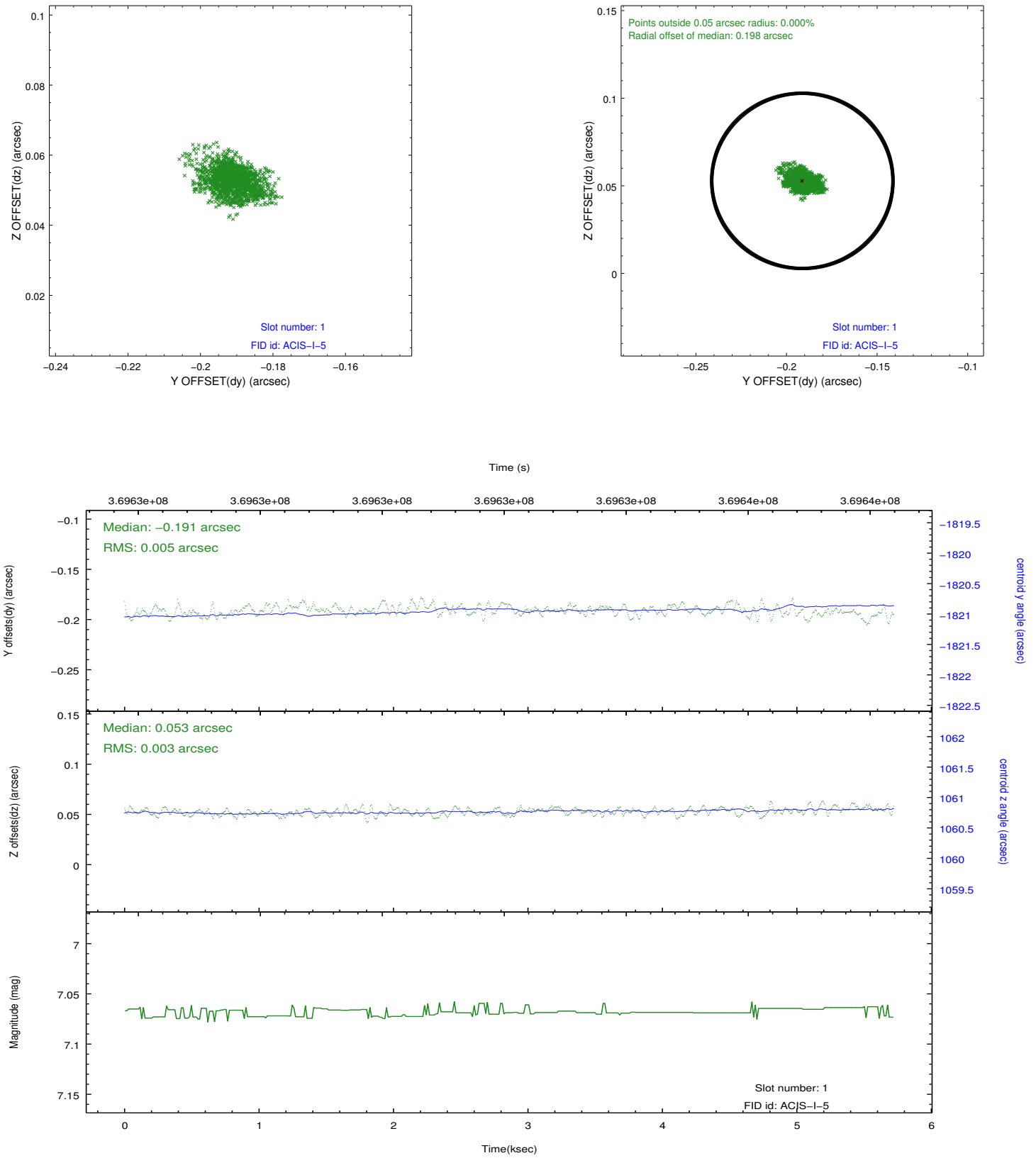


2.5 FID Slots

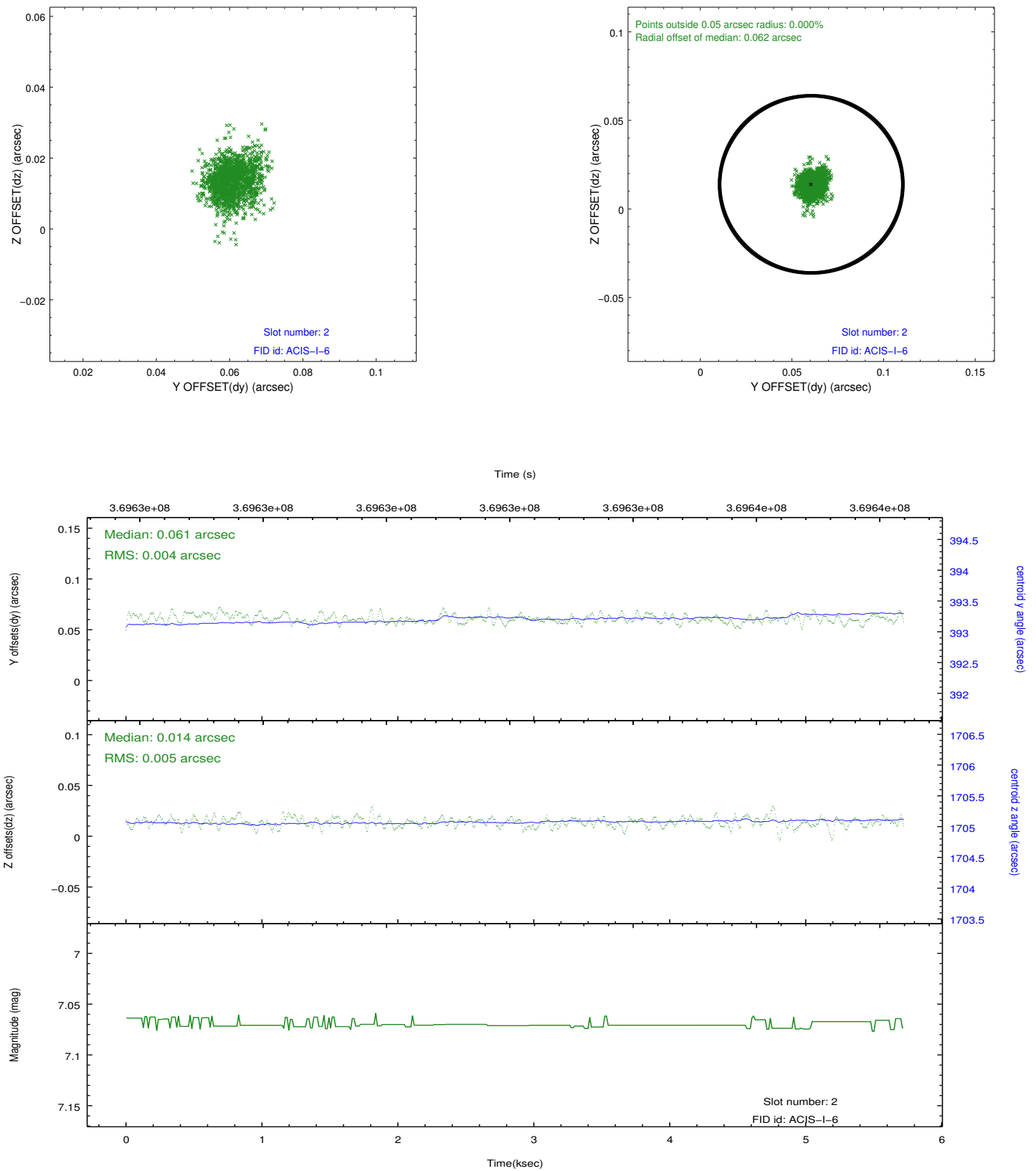
2.5.1 Slot 0



2.5.2 Slot 1



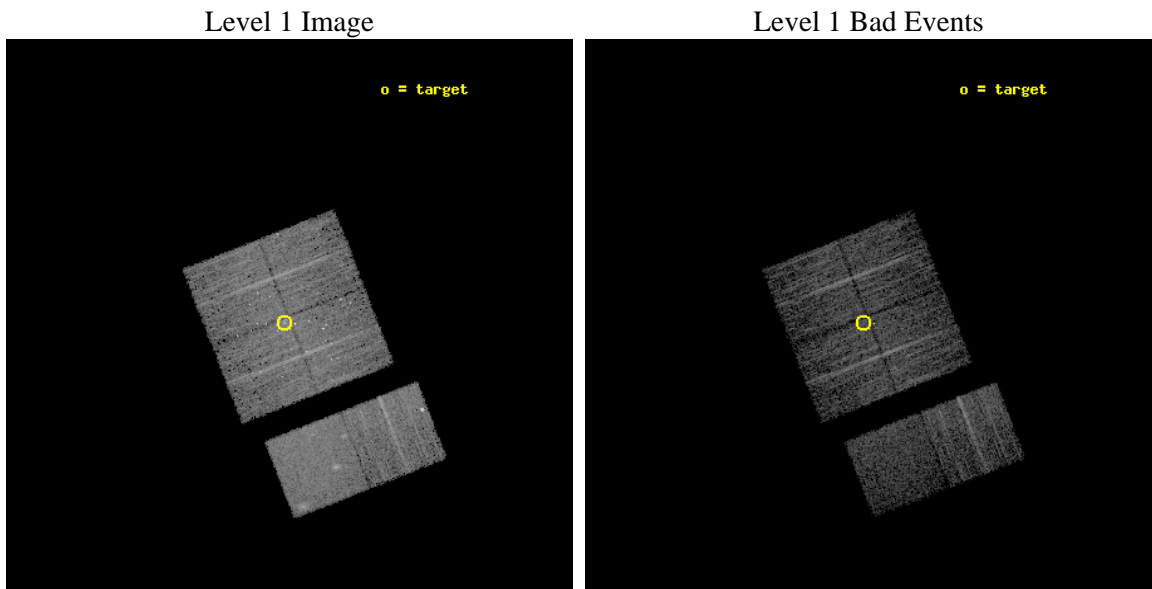
2.5.3 Slot 2



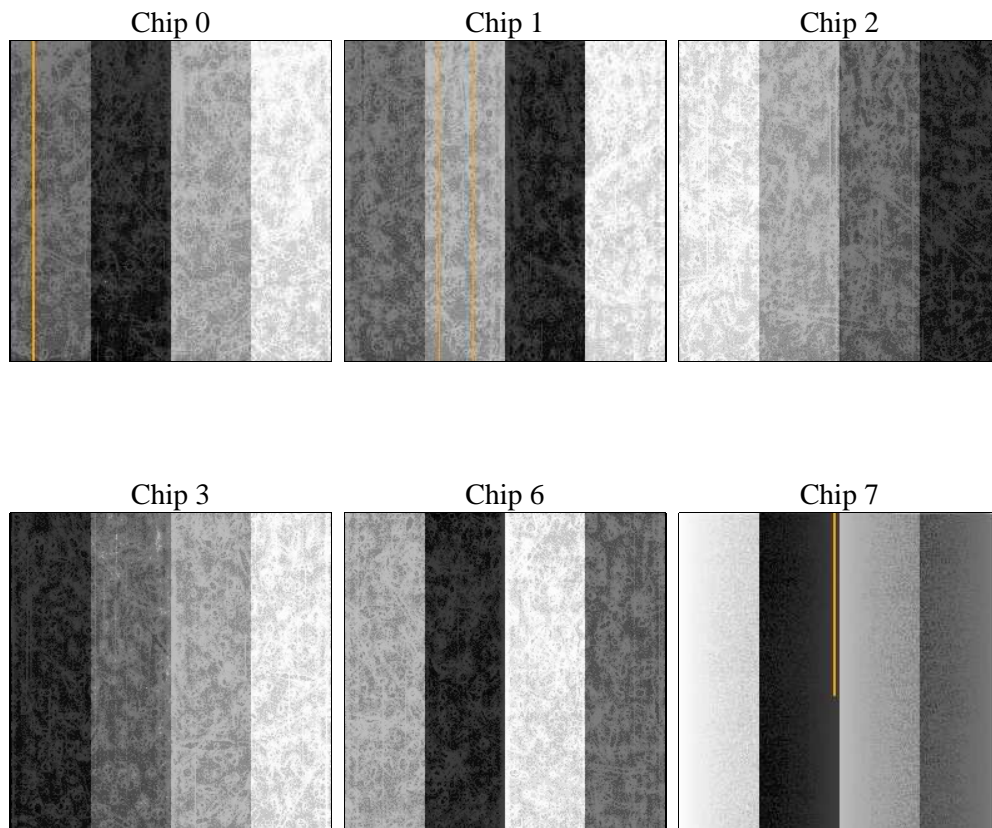
3 OBI Secondary

3.1 OBI

3.1.1 Images



3.1.2 Bias



3.1.3 Parameters

obi_num	0	Obi number	sched_exp_time	5000.000000	[s] Scheduled observation exposure time
ascdsver	8.4.5	Processing system revision	ontime	4016.1895070076	Sum of GTIs [s]
caldsver	4.4.10	 	ontime0	4012.9485546947	Sum of GTIs [s]
date	2012-06-13T18:48:22	Date and time of file creation	ontime1	4016.1895557642	Sum of GTIs [s]
revision	2	Processing version of data	ontime2	4016.1894363165	Sum of GTIs [s]
			ontime3	4016.1895070076	Sum of GTIs [s]
			ontime6	4016.1895457506	Sum of GTIs [s]
			ontime7	4016.1893885732	Sum of GTIs [s]
			l1events	224542	Number of level 1 events

3.1.4 Events

	ccd 0	ccd 1	ccd 2	ccd 3	ccd 6	ccd 7		ccd 0	ccd 1	ccd 2	ccd 3	ccd 6	ccd 7
level 1 events	33690	36367	39508	36720	37041	41216	grade 0 events	1906	3353	4716	3563	2562	2041
rejected events	29399	30029	31502	30498	31949	21516		5%	9%	11%	9%	6%	4%
rejected %	87%	82%	79%	83%	86%	52%	grade 1 events	23	37	198	56	22	53
								0%	0%	0%	0%	0%	0%
							grade 2 events	897	1198	1360	1001	866	4048
								2%	3%	3%	2%	2%	9%
							grade 3 events	398	496	517	448	418	1806
								1%	1%	1%	1%	1%	4%
							grade 4 events	404	478	549	447	406	1855
								1%	1%	1%	1%	1%	4%
							grade 5 events	1253	1379	1236	1447	1472	4107
								3%	3%	3%	3%	3%	9%
							grade 6 events	688	823	872	766	844	9967
								2%	2%	2%	2%	2%	24%
							grade 7 events	28121	28603	30060	28992	30451	17339
								83%	78%	76%	78%	82%	42%

A Summary

A.1 Status

V&V Scientist	Jen Lauer
V&V Date (YYYY-MM-DD)	2012.06.18
V&V Edition	1
V&V Disposition and Status	OK
V&V Charge Time	4.95392885625359

A.2 Comments

Time constraint not met.