

V&V Reference Report

L2 ASCDS Version : 8.4.4

Observation 10708 - L2 Version 2
Chandra X-Ray Center

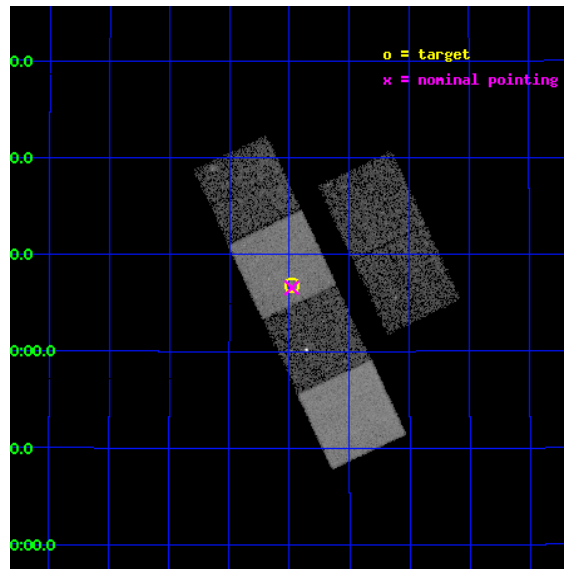
L2 Processing Date : Jun 2 2012

Contents

1	Front	2
2	OBI	3
2.1	OBI	3
2.1.1	Images	3
2.1.2	Bias	3
2.1.3	Parameters	4
2.1.4	Events	4
2.2	Compared Parameters	5
2.3	Aspect	6
2.4	Star Slots	9
2.4.1	Slot 3	9
2.4.2	Slot 4	10
2.4.3	Slot 5	11
2.4.4	Slot 6	12
2.4.5	Slot 7	13
2.5	FID Slots	14
2.5.1	Slot 0	14
2.5.2	Slot 1	15
2.5.3	Slot 2	16
A	Summary	17
A.1	Status	17
A.2	Comments	17

1 Front

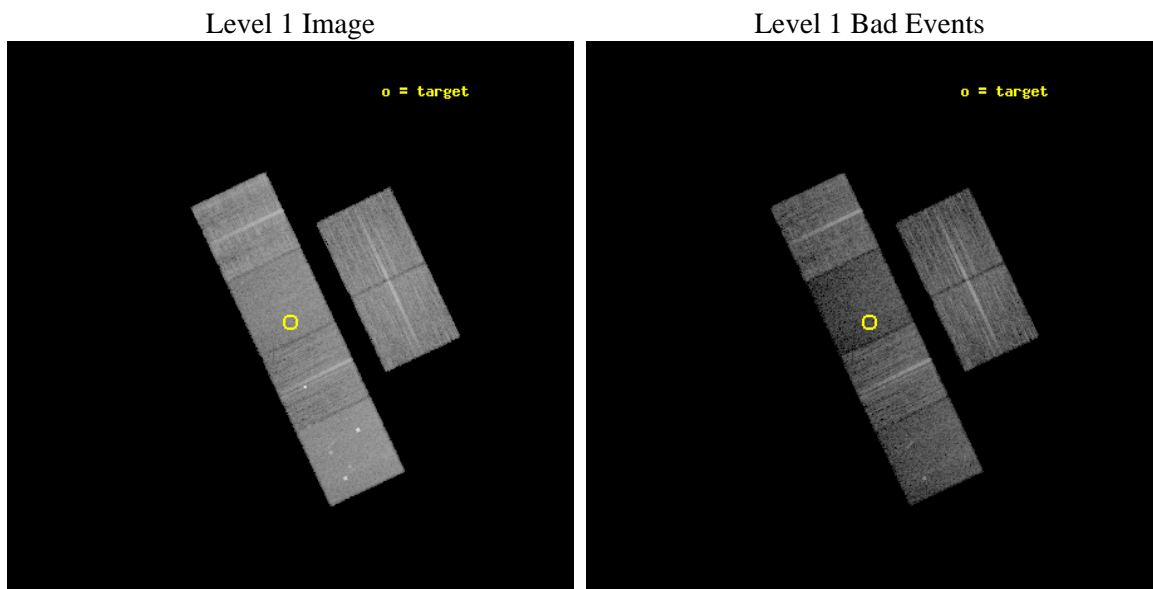
seq_num	501164	Sequence number
obs_id	10708	Observation id
title	Long GRB Jet Breaks	Proposal title
observer	Professor Gordon Garmire	Principal investigator
object	GRB 090102	Source name
dtcycle	0	
cycle	P	events from which exps? Prim/Second/Both
ra_targ	128.244167	Observer's specified target RA [deg]
dec_targ	33.114472	Observer's specified target Dec [deg]
ra_nom	128.24477262983	Nominal RA [deg]
dec_nom	33.109636617376	Nominal Dec [deg]
roll_nom	244.75630691487	Nominal Roll [deg]
revision	2	Processing version of data
ontime	9433.5999649167	Sum of GTIs [s]
livetime	9314.146041929	Livetime [s]
ontime2	9433.5999649167	Sum of GTIs [s]
ontime3	9430.3589547276	Sum of GTIs [s]
ontime5	9433.5999649167	Sum of GTIs [s]
ontime6	9433.5999649167	Sum of GTIs [s]
ontime7	9433.5999649167	Sum of GTIs [s]
ontime8	9433.5999649167	Sum of GTIs [s]
l2events	108894	Number of level 2 events



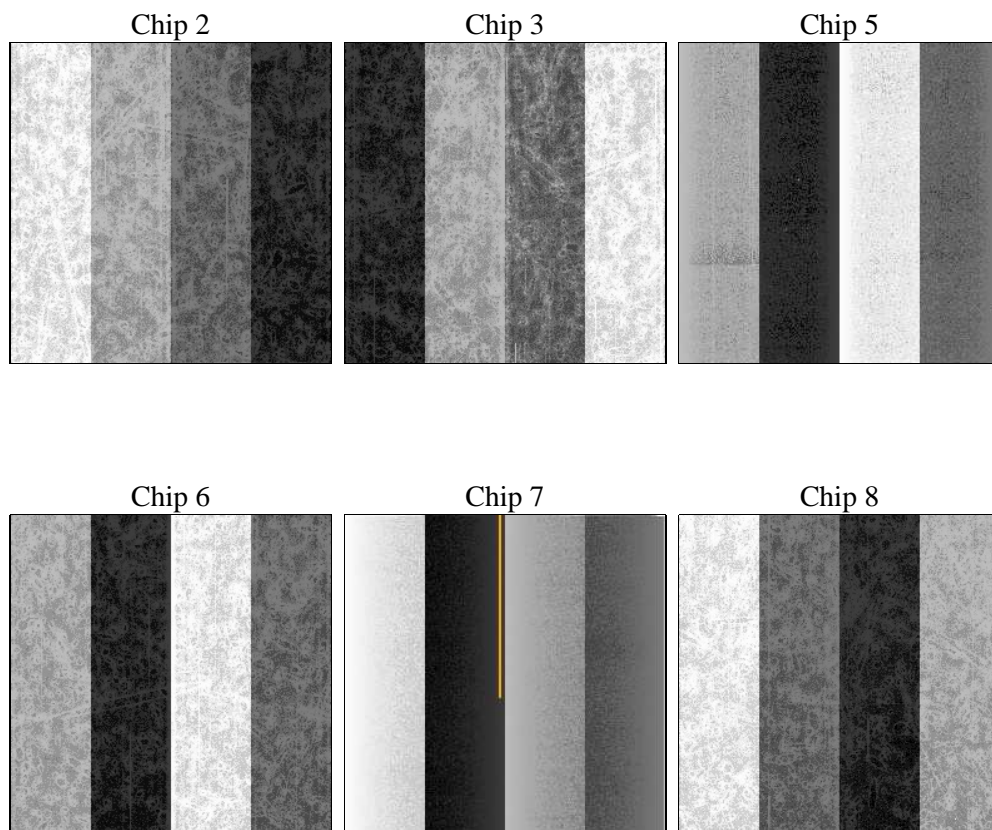
2 OBI

2.1 OBI

2.1.1 Images



2.1.2 Bias



2.1.3 Parameters

obi_num	0	Obi number	sched_exp_time	9256.498000	[s] Scheduled observation exposure time
ascdsver	8.4.4	Processing system revision	ontime	9433.5999649167	Sum of GTIs [s]
caldsver	4.4.9	 	ontime2	9433.5999649167	Sum of GTIs [s]
date	2012-06-02T14:25:49	Date and time of file creation	ontime3	9430.3589547276	Sum of GTIs [s]
revision	2	Processing version of data	ontime5	9433.5999649167	Sum of GTIs [s]
			ontime6	9433.5999649167	Sum of GTIs [s]
			ontime7	9433.5999649167	Sum of GTIs [s]
			ontime8	9433.5999649167	Sum of GTIs [s]
			l1events	552899	Number of level 1 events

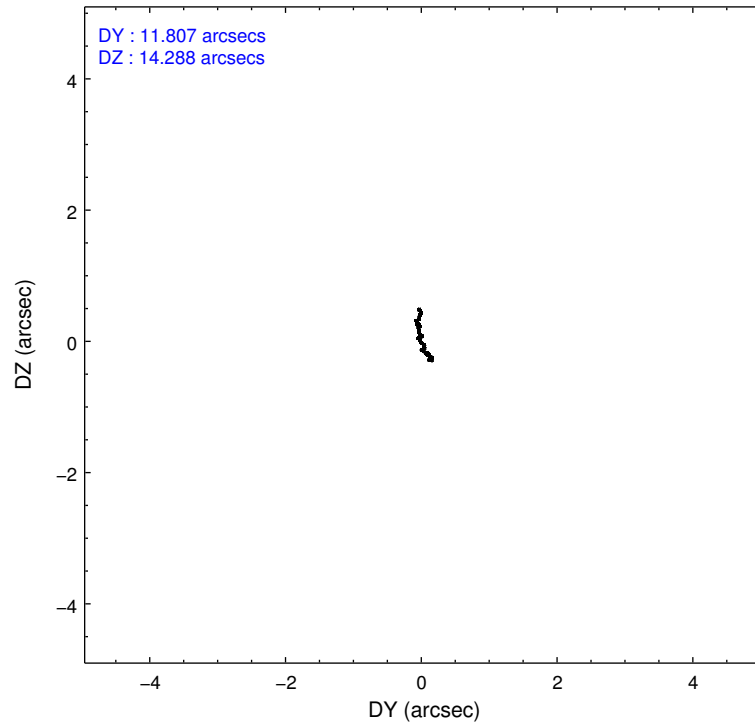
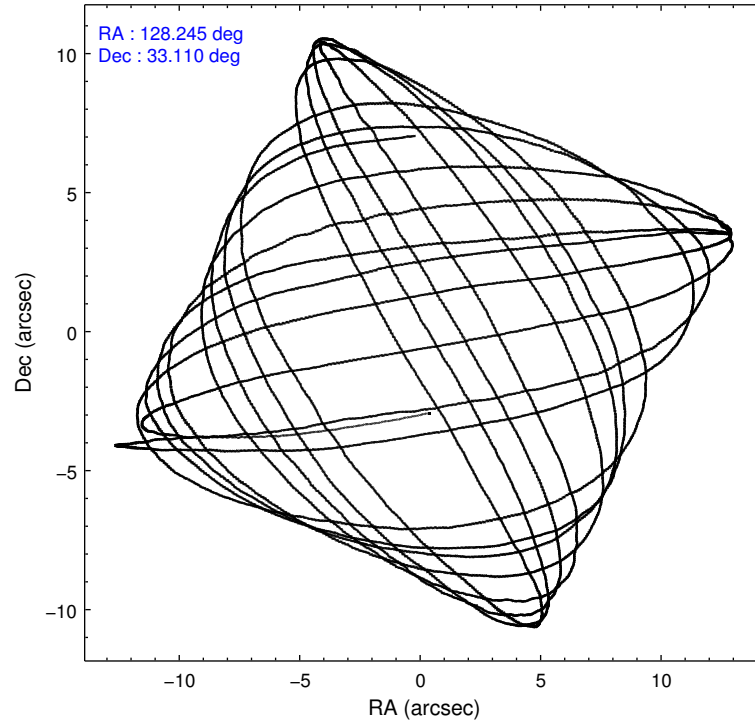
2.1.4 Events

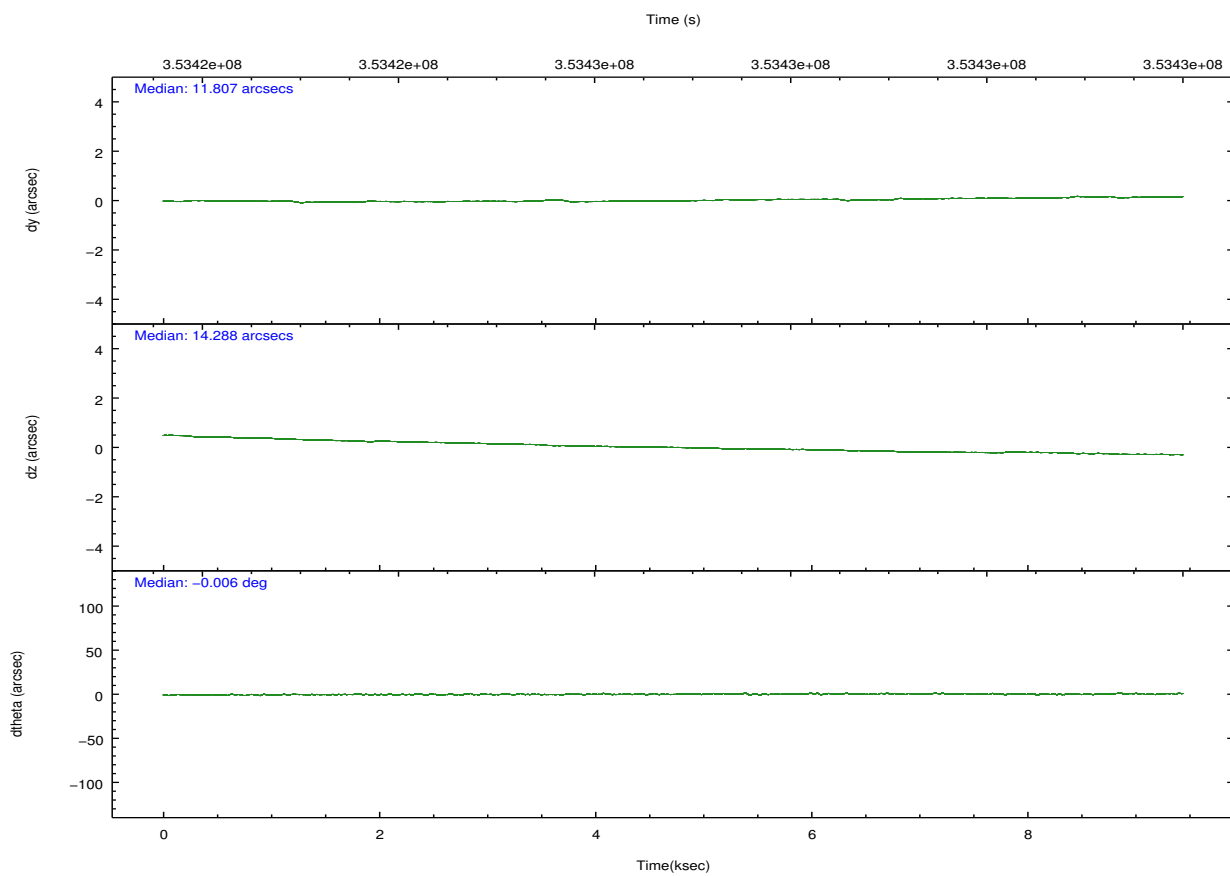
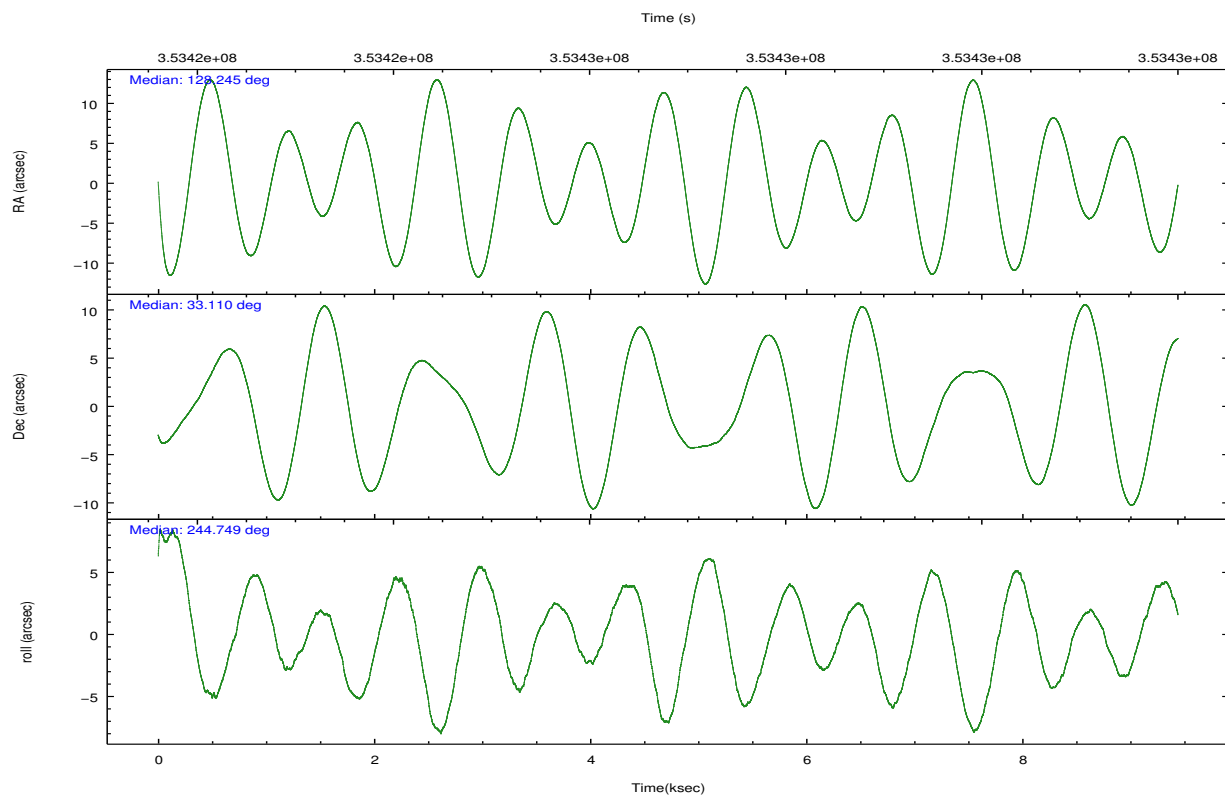
	ccd 2	ccd 3	ccd 5	ccd 6	ccd 7	ccd 8		ccd 2	ccd 3	ccd 5	ccd 6	ccd 7	ccd 8
level 1 events	87999	80541	110902	85023	82046	106388	grade 0 events	3044	2888	7853	4764	4175	7583
rejected events	80654	73662	58793	75263	46054	82224		3%	3%	7%	5%	5%	7%
rejected %	91%	91%	53%	88%	56%	77%	grade 1 events	49	52	274	56	130	78
								0%	0%	0%	0%	0%	0%
							grade 2 events	2000	1690	18124	2150	8757	6704
								2%	2%	16%	2%	10%	6%
							grade 3 events	858	880	2388	1001	3765	2979
								0%	1%	2%	1%	4%	2%
							grade 4 events	886	867	2314	1000	3786	2727
								1%	1%	2%	1%	4%	2%
							grade 5 events	2547	2915	8937	2944	8689	4540
								2%	3%	8%	3%	10%	4%
							grade 6 events	1449	1472	28507	1885	20189	7529
								1%	1%	25%	2%	24%	7%
							grade 7 events	77166	69777	42505	71223	32555	74248
								87%	86%	38%	83%	39%	69%

2.2 Compared Parameters

Parameter	Planned	Actual	Parameter	Planned	Actual
Instrument	ACIS	ACIS	Obspar format version number	7	7
Detector	ACIS-235678	ACIS-235678	Obspar file type	PREDICTED	ACTUAL
Grating	NONE	NONE	Obspar update status	NONE	UPDATED
Data mode	VFAINT	VFAINT	CCD I0 on	N	N
Observation mode	POINTING	POINTING	CCD I1 on	N	N
[deg] Pointing RA	128.241661	128.2447726298302	CCD I2 on	O2	Y
[deg] Pointing Dec	33.136870	33.10963661737573	CCD I3 on	O3	Y
[deg] Pointing Roll	244.601367	244.7563069148694	CCD S0 on	N	N
[mm] SIM focus pos	-0.684267	-0.6828225247311905	CCD S1 on	O1	Y
[mm] SIM defocus	0	0.001444936568705701	CCD S2 on	O5	Y
[mm] SIM translation stage pos	-190.132523	-190.1425803651734	CCD S3 on	Y	Y
[mm] SIM translation stage offset	0	0.01005778216563158	CCD S4 on	O4	Y
[s] Observation start time (MET)	353422258.184000	353420573.74571	CCD S5 on	N	N
Observation start date	2009-03-14T12:49:52	2009-03-14T12:22:53	Number of optional ACIS chips dropped	0	0
[s] Observation end time (MET)	353431514.184000	353431734.97126	On-chip summing requested	N	N
Observation end date	2009-03-14T15:24:08	2009-03-14T15:28:54	Subarray requested	NONE	NONE
Read mode	TIMED	TIMED	Alternating exposures requested	N	N
			[s] Primary exposure time	0.000000	3.2

2.3 Aspect



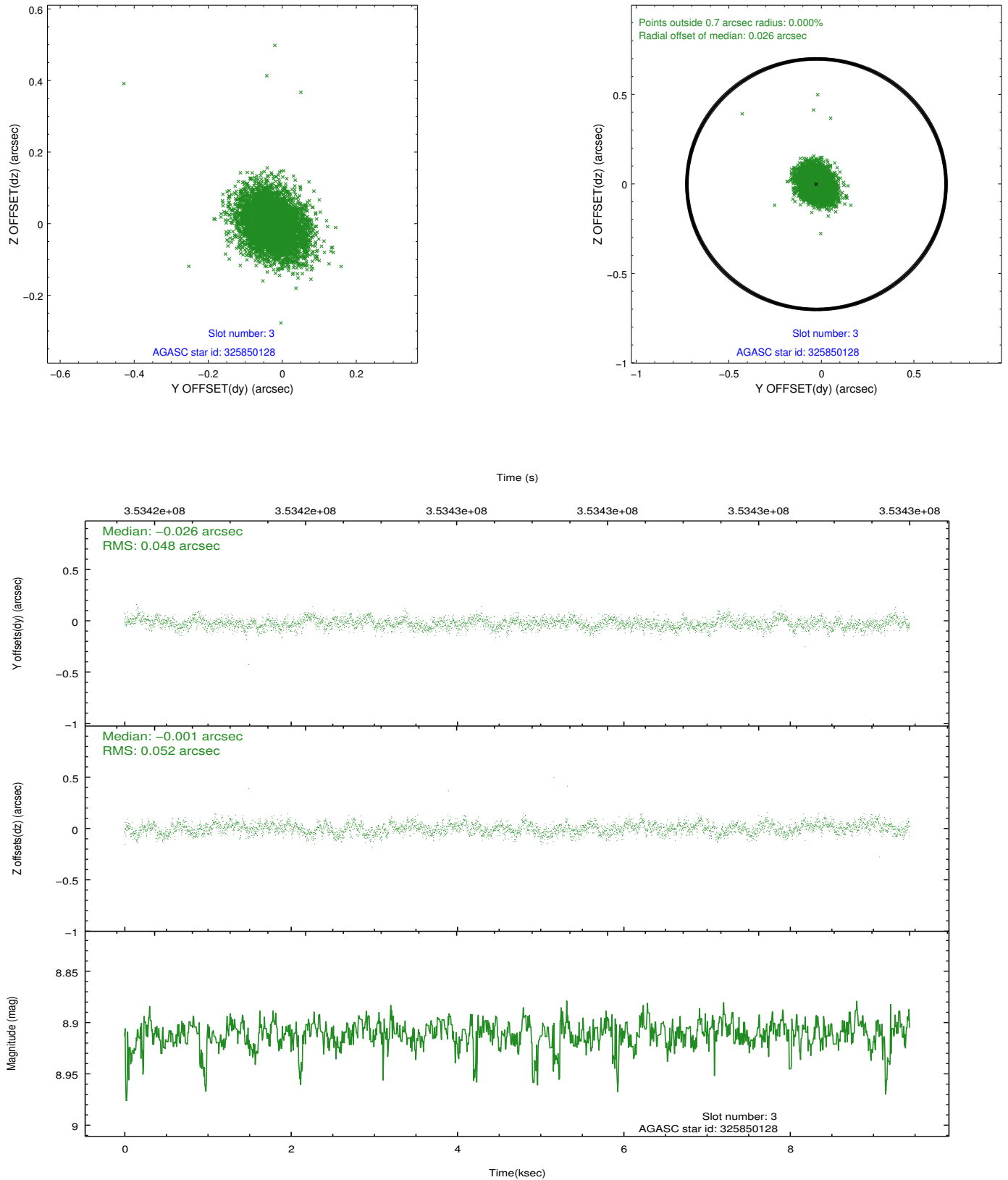


Slot Statistics

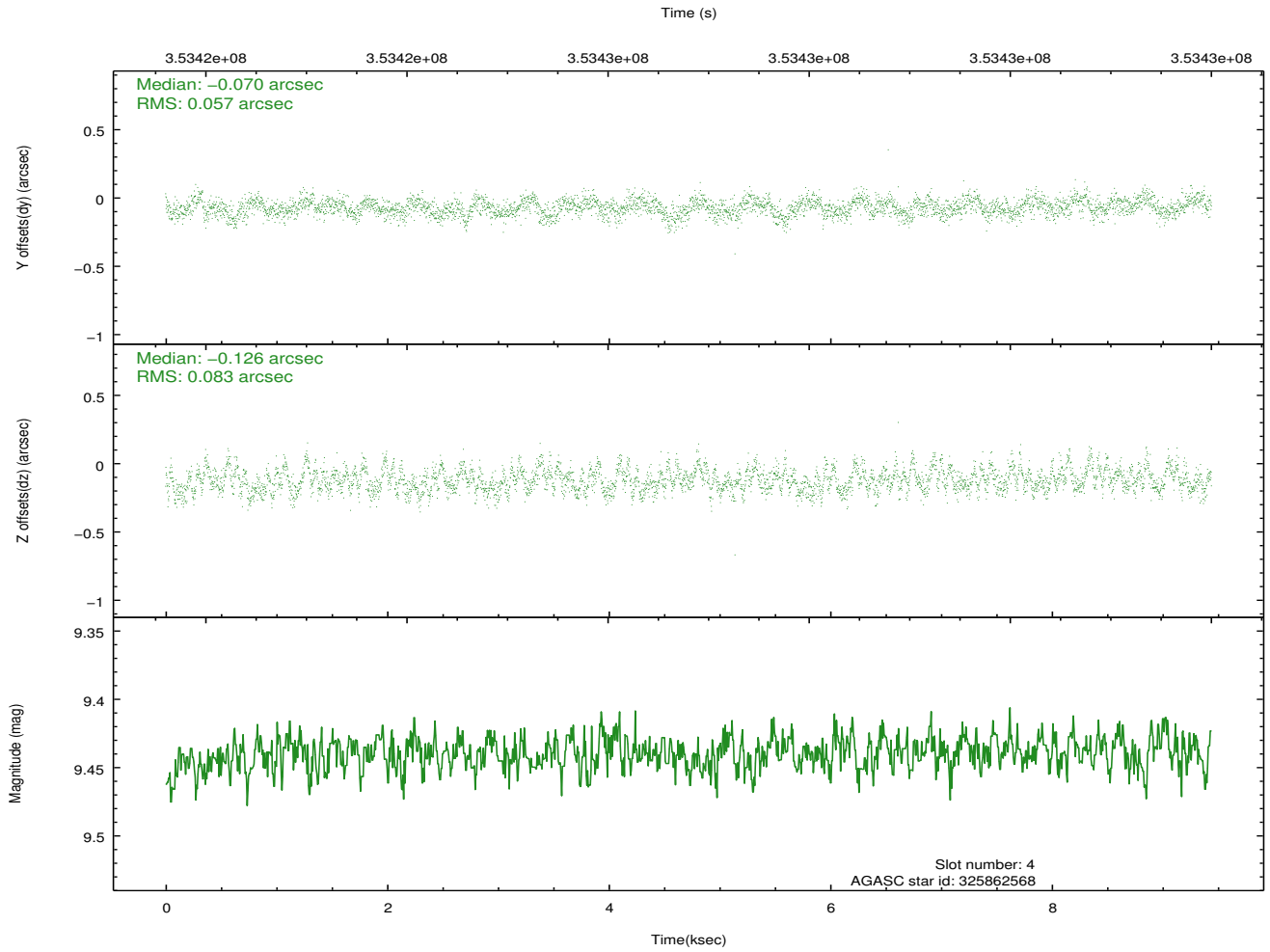
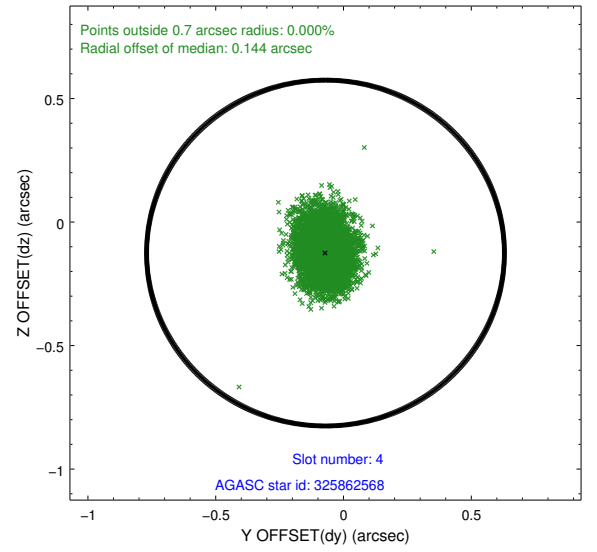
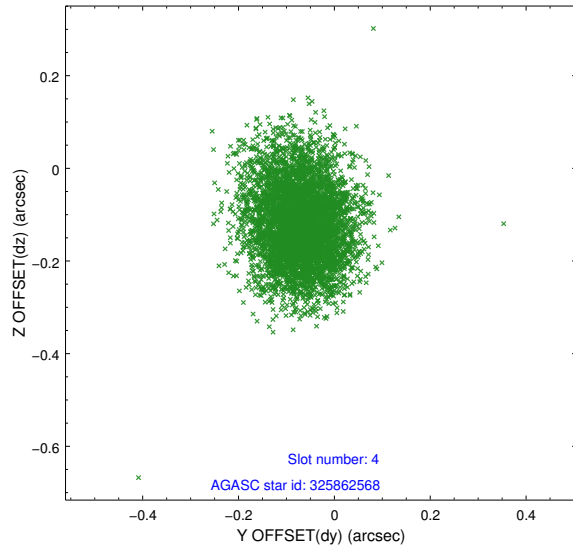
slot	status	id	mag	n_pts	med_dy	med_dz	dr1	dr2	ra	dec	mean_y	mean_z
0	FID	ACIS-S-1	6.98	2303	0.064	-0.030	0.012	0.021	0.000000	0.000000	931.41	-1731.27
1	FID	ACIS-S-5	7.02	2303	-0.105	0.050	0.011	0.019	0.000000	0.000000	-1817.46	165.74
2	FID	ACIS-S-6	7.12	2303	0.019	-0.009	0.017	0.026	0.000000	0.000000	396.27	810.31
3	GUIDE	325850128	8.91	4590	-0.026	-0.001	0.074	0.119	128.006537	33.170352	194.27	-691.75
4	GUIDE	325862568	9.44	4600	-0.070	-0.126	0.105	0.175	127.808098	33.641064	-1084.46	-1953.69
5	GUIDE	325848528	9.36	4601	0.015	-0.071	0.121	0.191	128.890961	32.792079	272.69	2304.77
6	GUIDE	325859552	9.63	4603	0.055	0.042	0.112	0.179	128.318446	33.774353	-2171.43	-776.29
7	GUIDE	325854560	9.37	4605	0.026	0.160	0.112	0.179	128.723716	32.582536	1171.95	2175.87

2.4 Star Slots

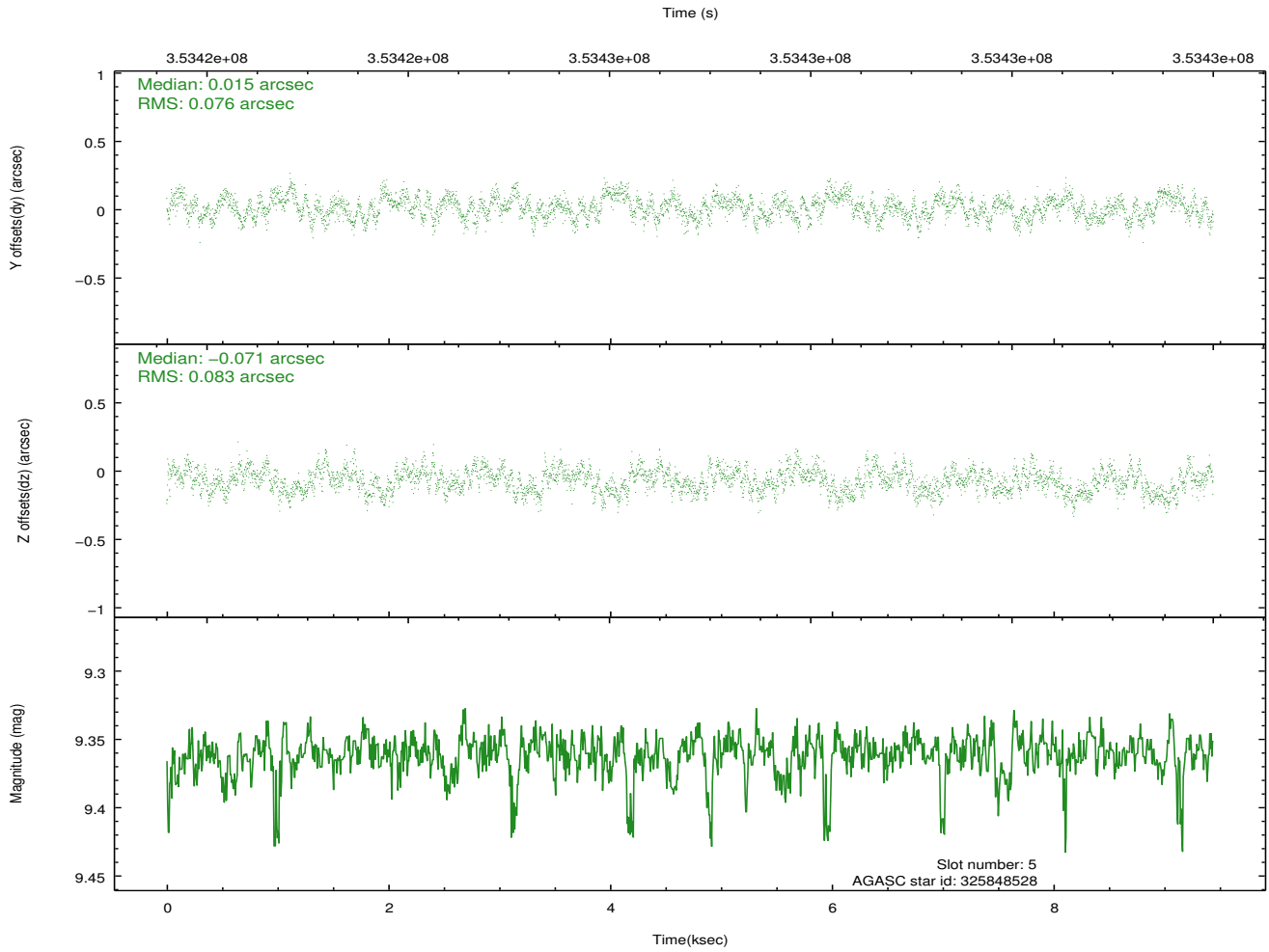
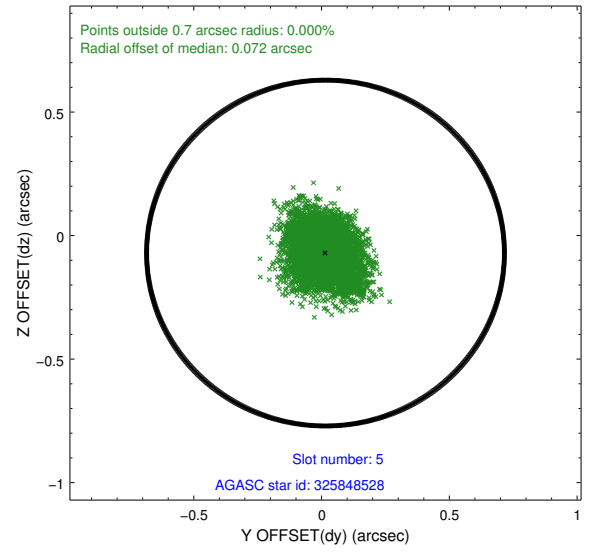
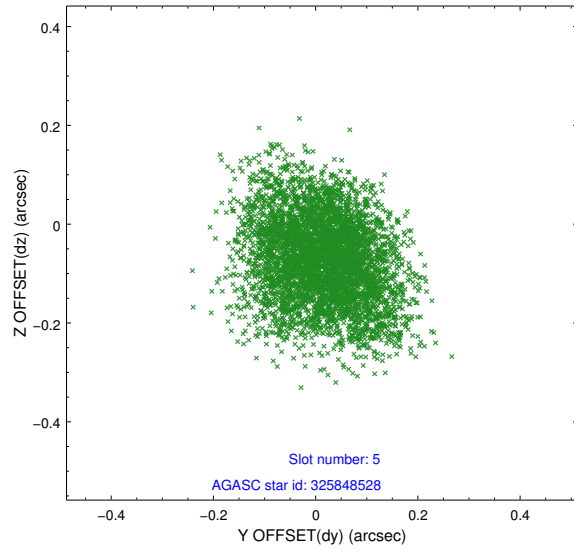
2.4.1 Slot 3



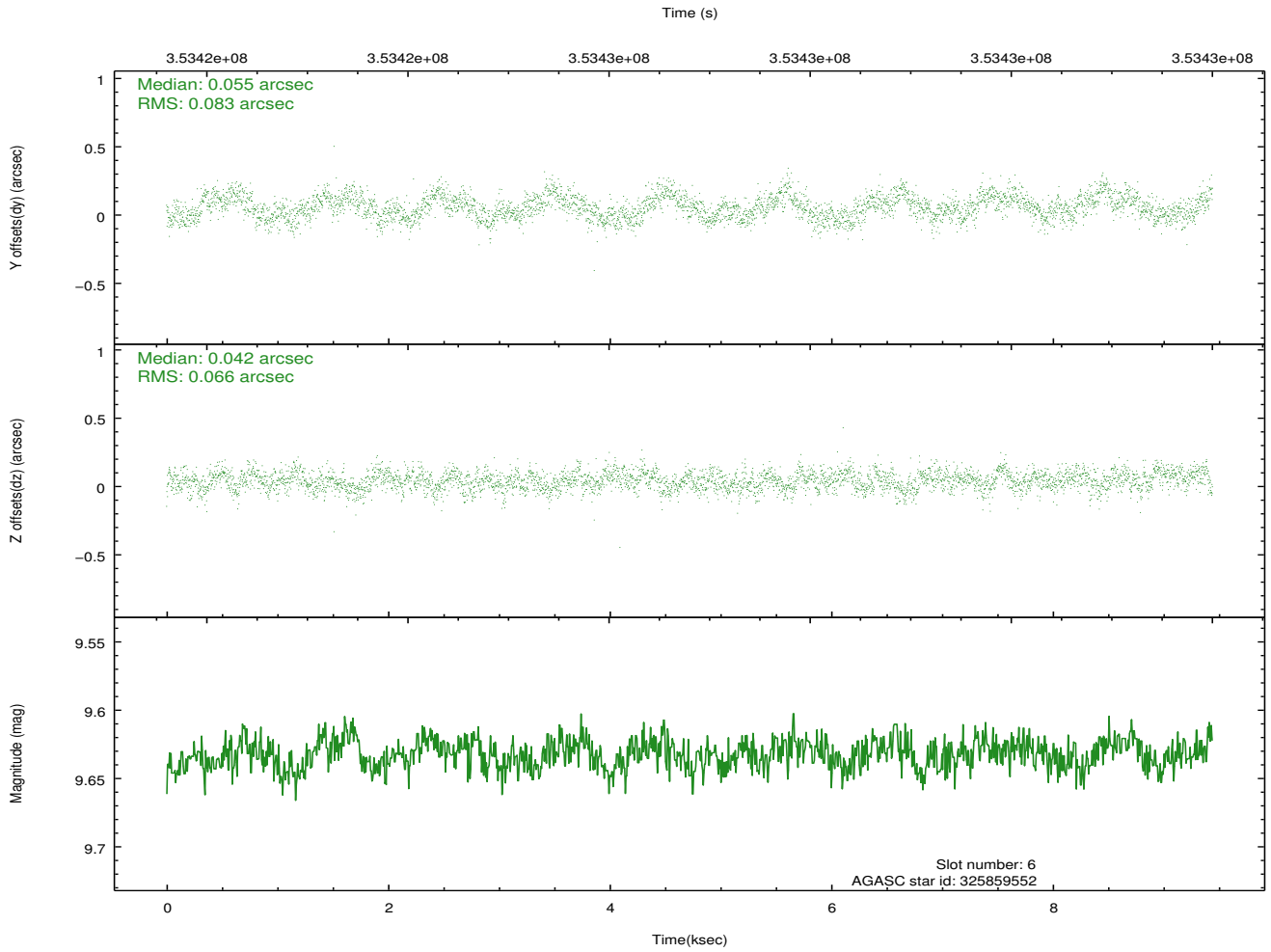
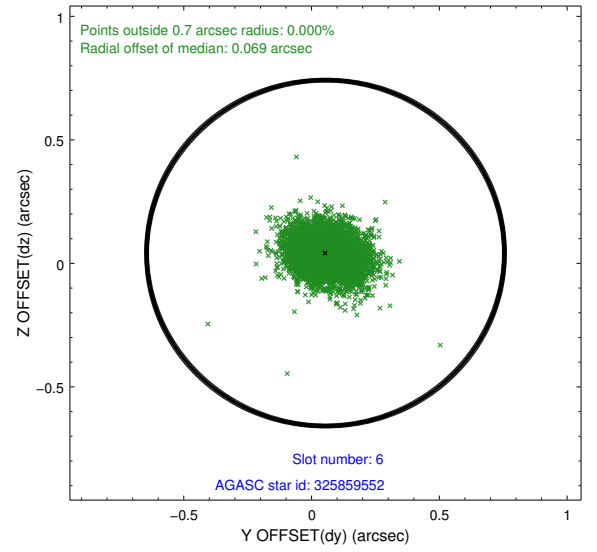
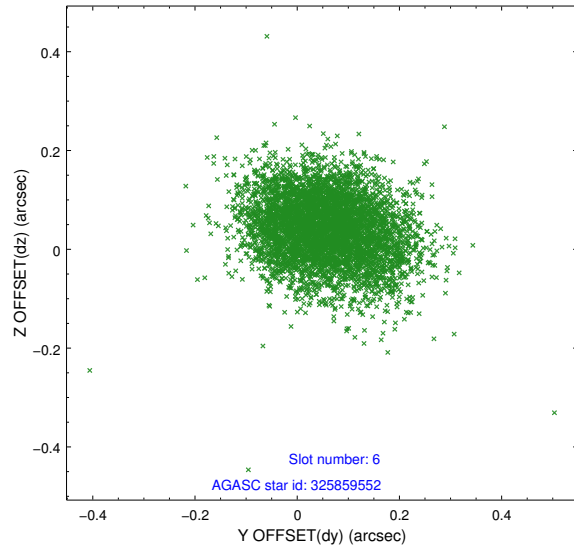
2.4.2 Slot 4



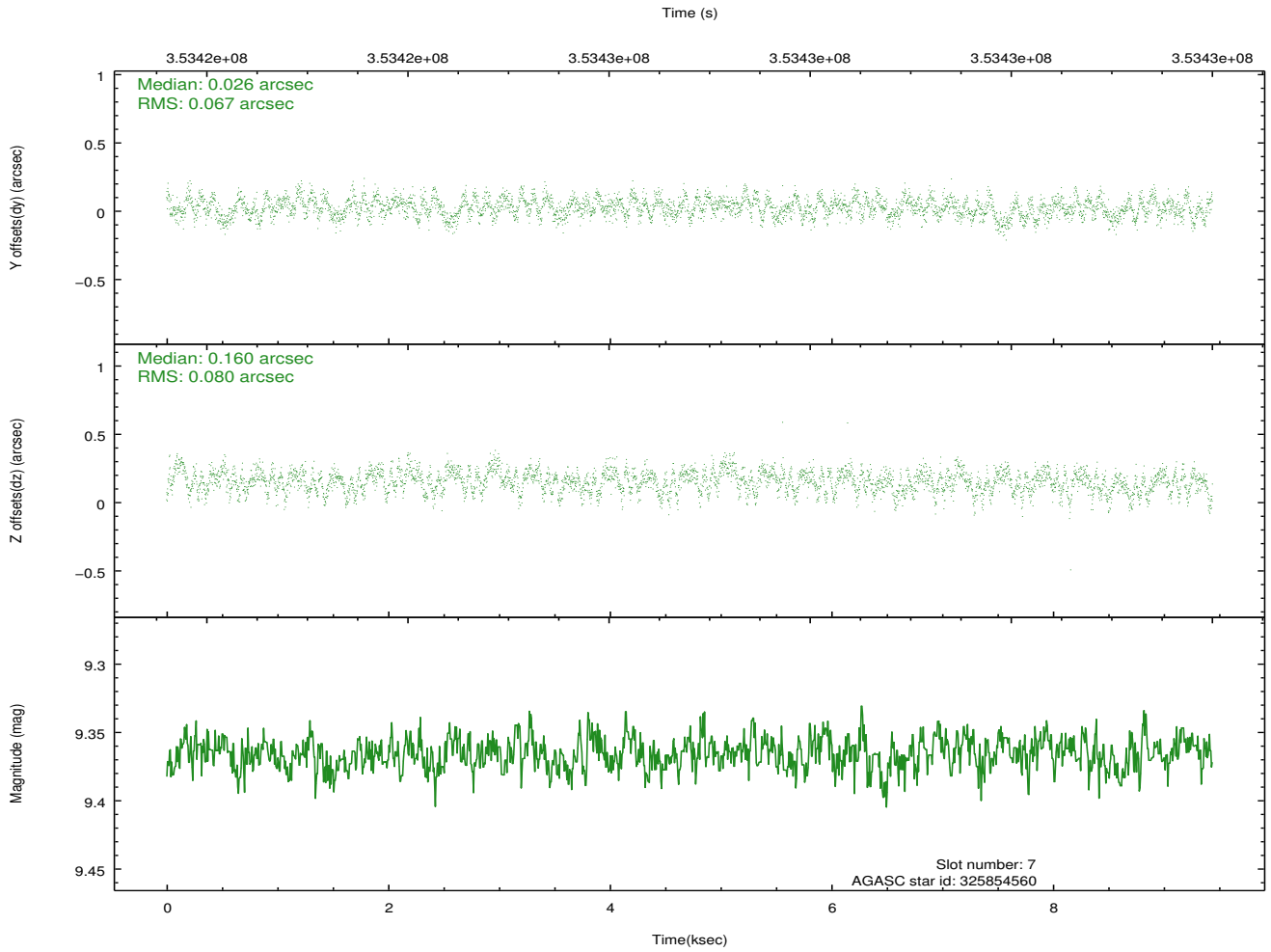
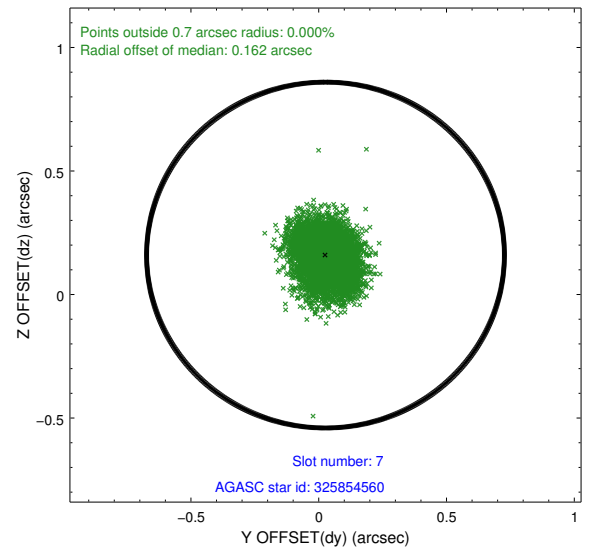
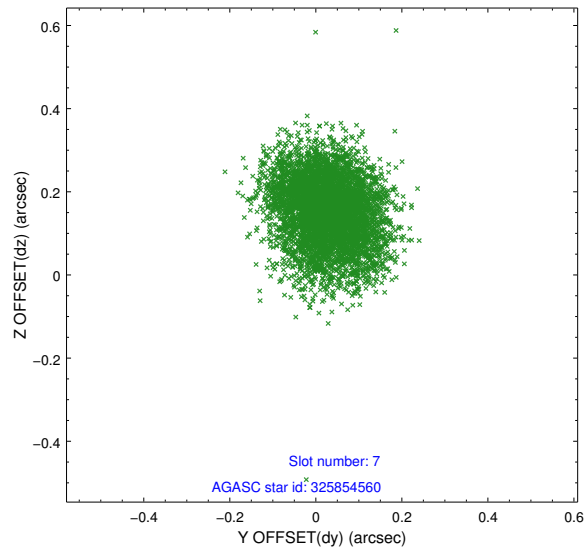
2.4.3 Slot 5



2.4.4 Slot 6

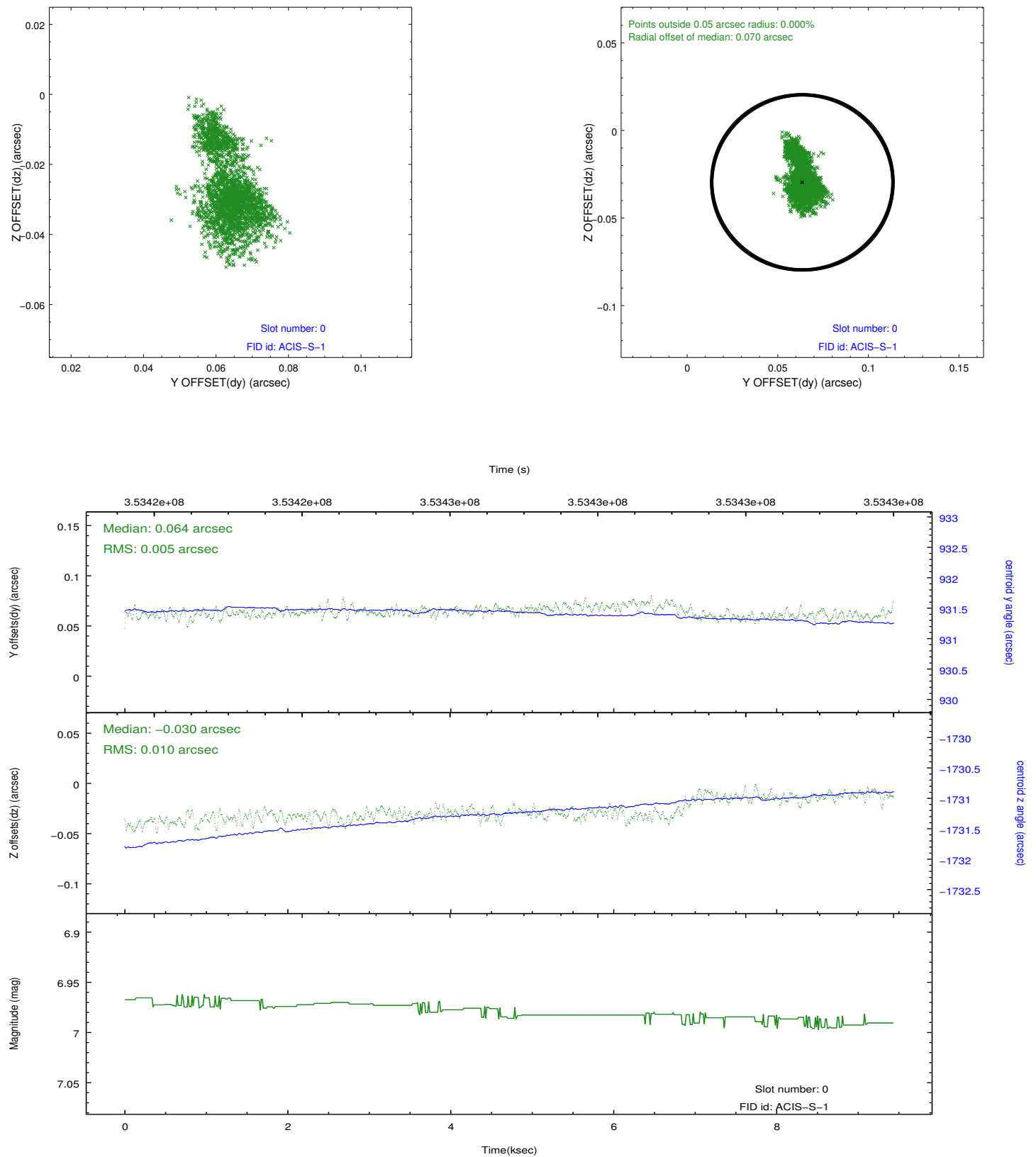


2.4.5 Slot 7

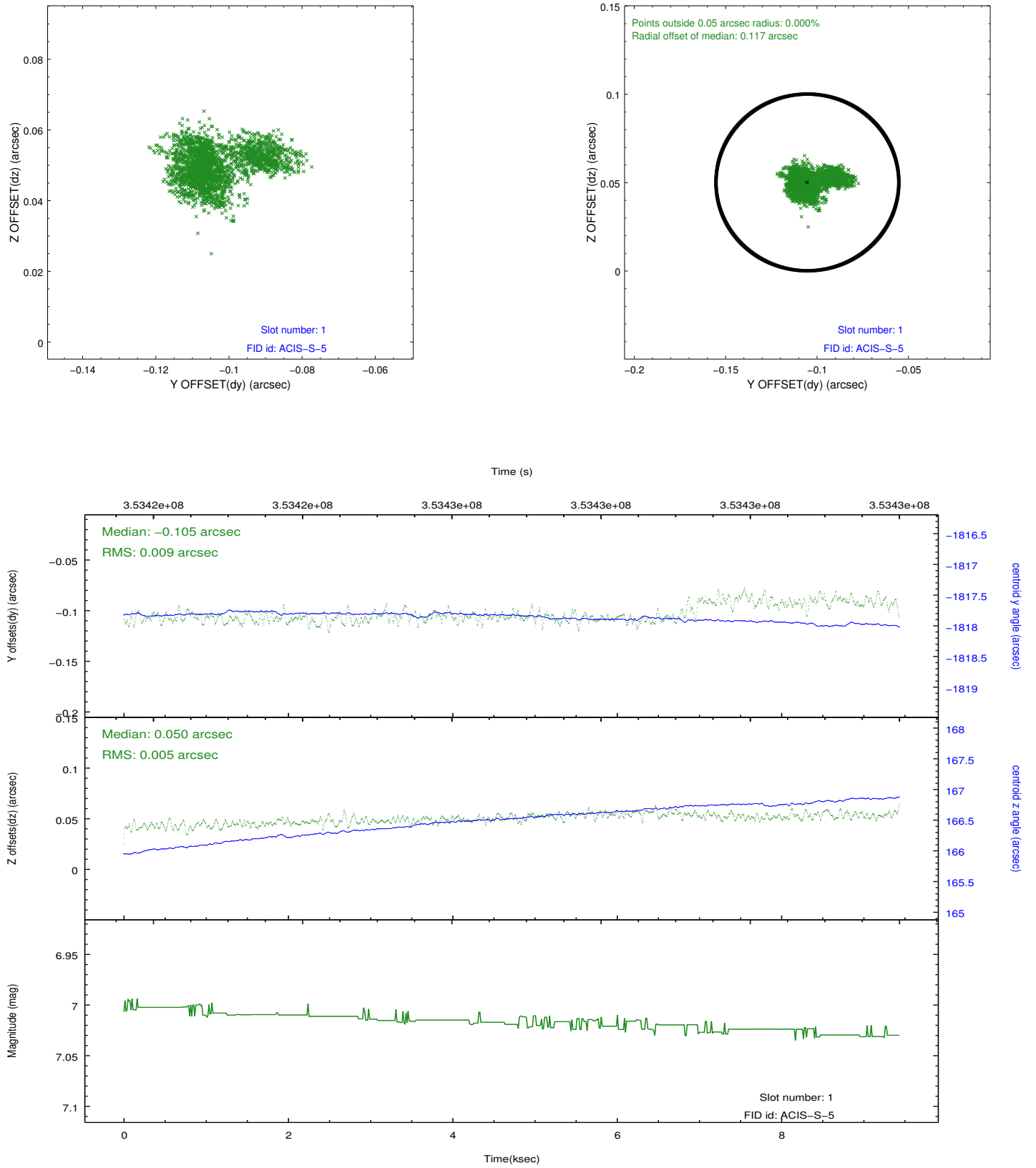


2.5 FID Slots

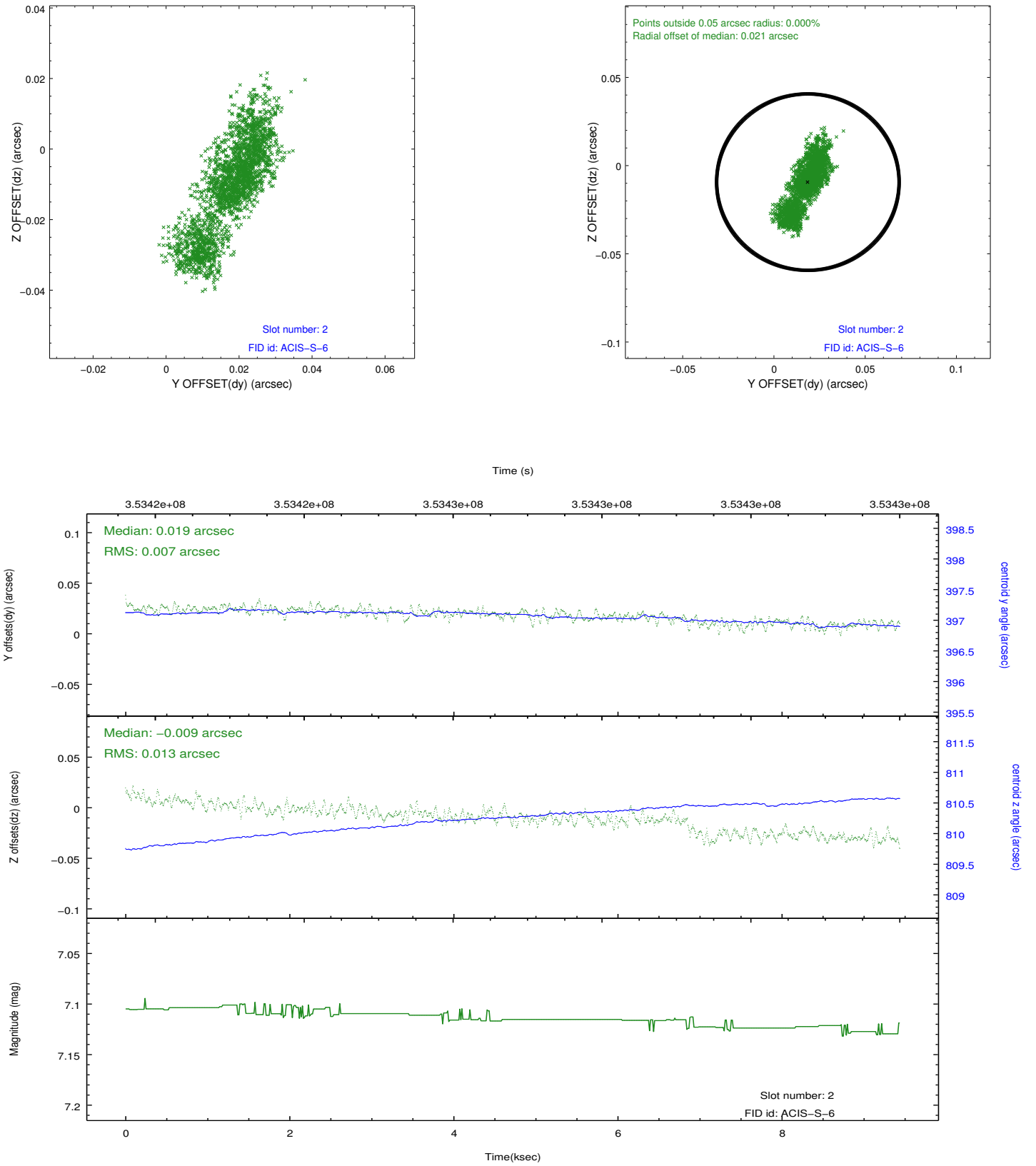
2.5.1 Slot 0



2.5.2 Slot 1



2.5.3 Slot 2



A Summary

A.1 Status

V&V Scientist	Joy Nichols
V&V Date (YYYY-MM-DD)	2012.06.07
V&V Edition	1
V&V Disposition and Status	OK
V&V Charge Time	9.43359996

A.2 Comments

Monitor constraint met, follows obs10708 by 35 days.