

V&V Reference Report

L2 ASCDS Version : 8.4.5

Observation 10068 - L2 Version 3
Chandra X-Ray Center

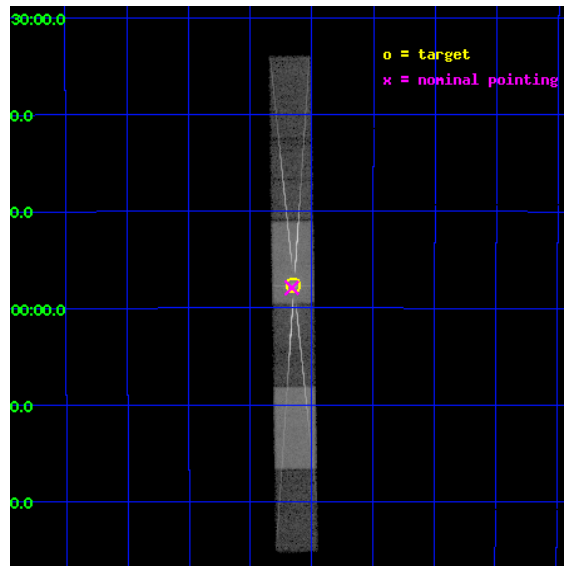
L2 Processing Date : Jun 18 2012

Contents

1	Front	2
2	OBI	3
2.1	OBI	3
2.1.1	Images	3
2.1.2	Parameters	4
2.1.3	Events	4
2.2	Compared Parameters	5
2.3	Aspect	6
2.4	Star Slots	9
2.4.1	Slot 3	9
2.4.2	Slot 4	10
2.4.3	Slot 5	11
2.4.4	Slot 6	12
2.4.5	Slot 7	13
2.5	FID Slots	14
2.5.1	Slot 0	14
2.5.2	Slot 1	15
2.5.3	Slot 2	16
3	Gratings	17
3.1	HEG Arm	17
3.2	MEG Arm	19
A	Summary	21
A.1	Status	21
A.2	Comments	21

1 Front

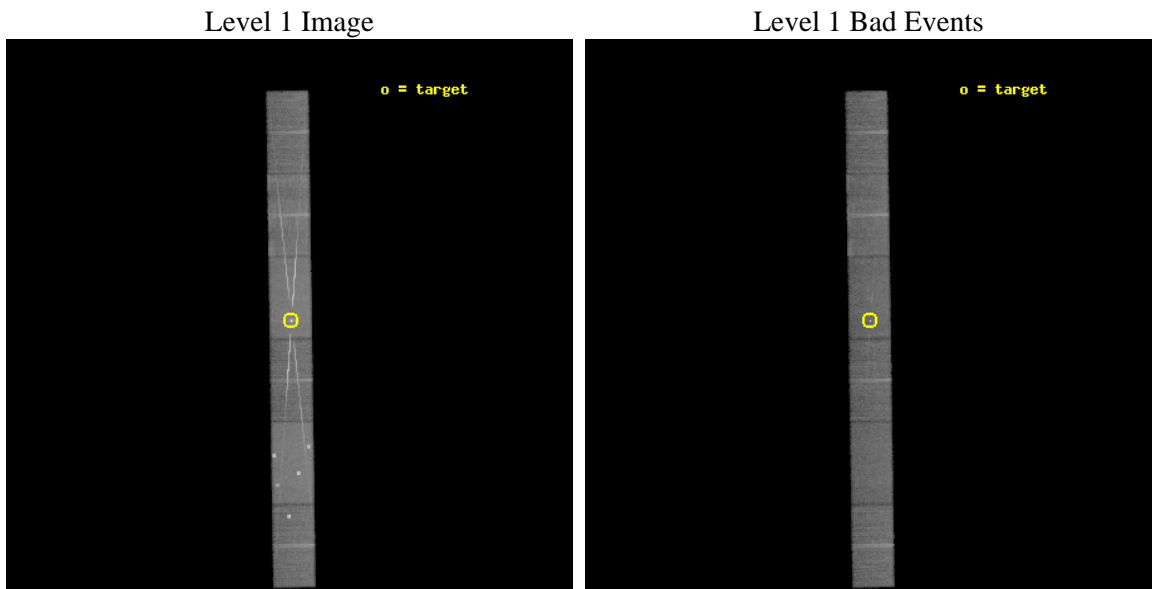
seq_num	401032	Sequence number
obs_id	10068	Observation id
title	INVESTIGATING NEW INTEGRAL SOURCES WITH CHANDRA	Proposal title
observer	Dr Adamantia Paizis	Principal investigator
object	IGR J17511-3057	Source name
dtcycle	0	
cycle	P	events from which exps? Prim/Second/Both
ra_targ	267.7875	Observer's specified target RA [deg]
dec_targ	-30.961111	Observer's specified target Dec [deg]
ra_nom	267.79039029067	Nominal RA [deg]
dec_nom	-30.965285000629	Nominal Dec [deg]
roll_nom	269.14587003282	Nominal Roll [deg]
revision	3	Processing version of data
ontime	19159.200126827	Sum of GTIs [s]
livetime	18732.108062991	Livetime [s]
ontime4	19159.200126827	Sum of GTIs [s]
ontime5	19159.200126827	Sum of GTIs [s]
ontime6	19159.200126827	Sum of GTIs [s]
ontime7	19159.200126827	Sum of GTIs [s]
ontime8	19159.200126827	Sum of GTIs [s]
ontime9	19159.200126827	Sum of GTIs [s]
l2events	294311	Number of level 2 events



2 OBI

2.1 OBI

2.1.1 Images



2.1.2 Parameters

obi_num	0	Obi number	sched_exp_time	19000.000000	[s] Scheduled observation exposure time
ascdsver	8.4.5	Processing system revision	ontime	19159.200126827	Sum of GTIs [s]
caldsver	4.4.10	 	ontime4	19159.200126827	Sum of GTIs [s]
date	2012-06-13T19:53:23	Date and time of file creation	ontime5	19159.200126827	Sum of GTIs [s]
revision	2	Processing version of data	ontime6	19159.200126827	Sum of GTIs [s]
			ontime7	19159.200126827	Sum of GTIs [s]
			ontime8	19159.200126827	Sum of GTIs [s]
			ontime9	19159.200126827	Sum of GTIs [s]
			l1events	949515	Number of level 1 events

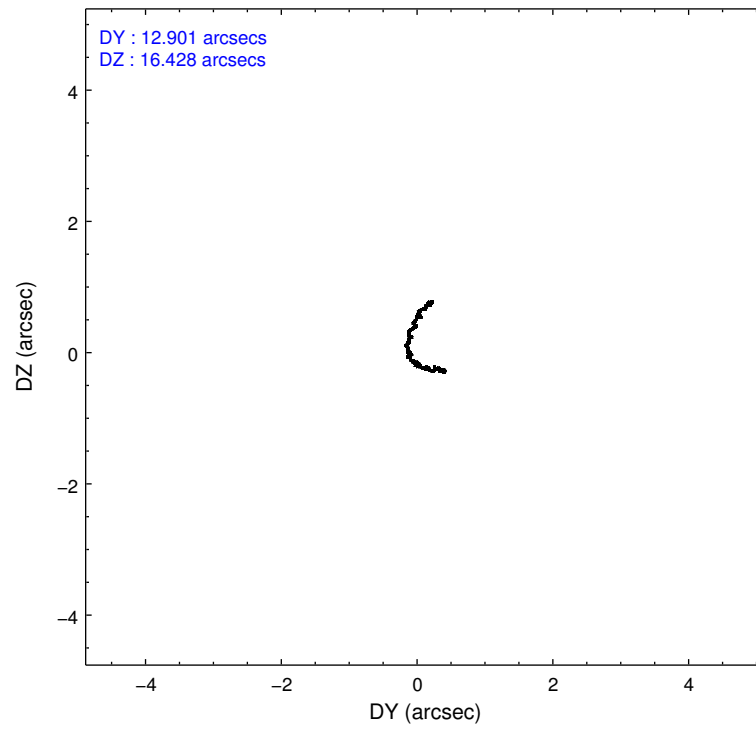
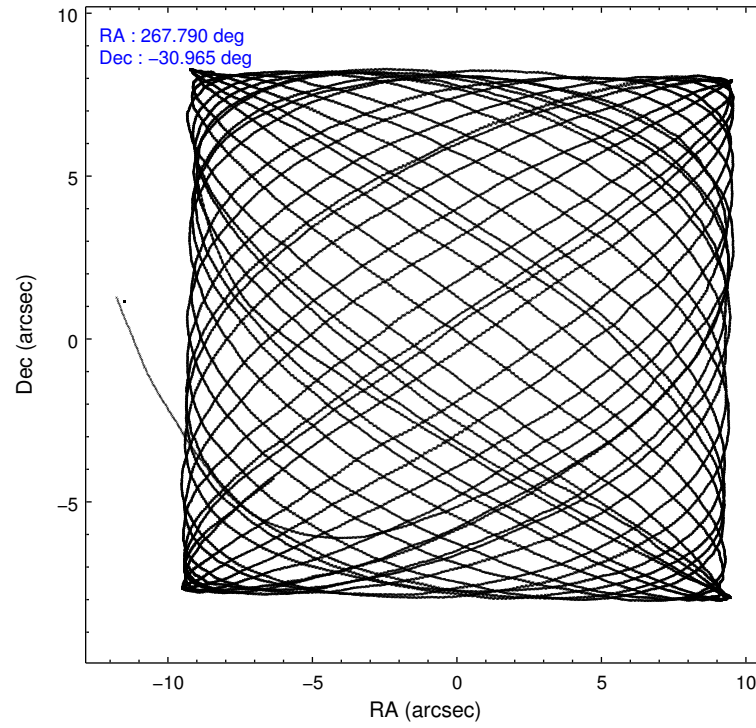
2.1.3 Events

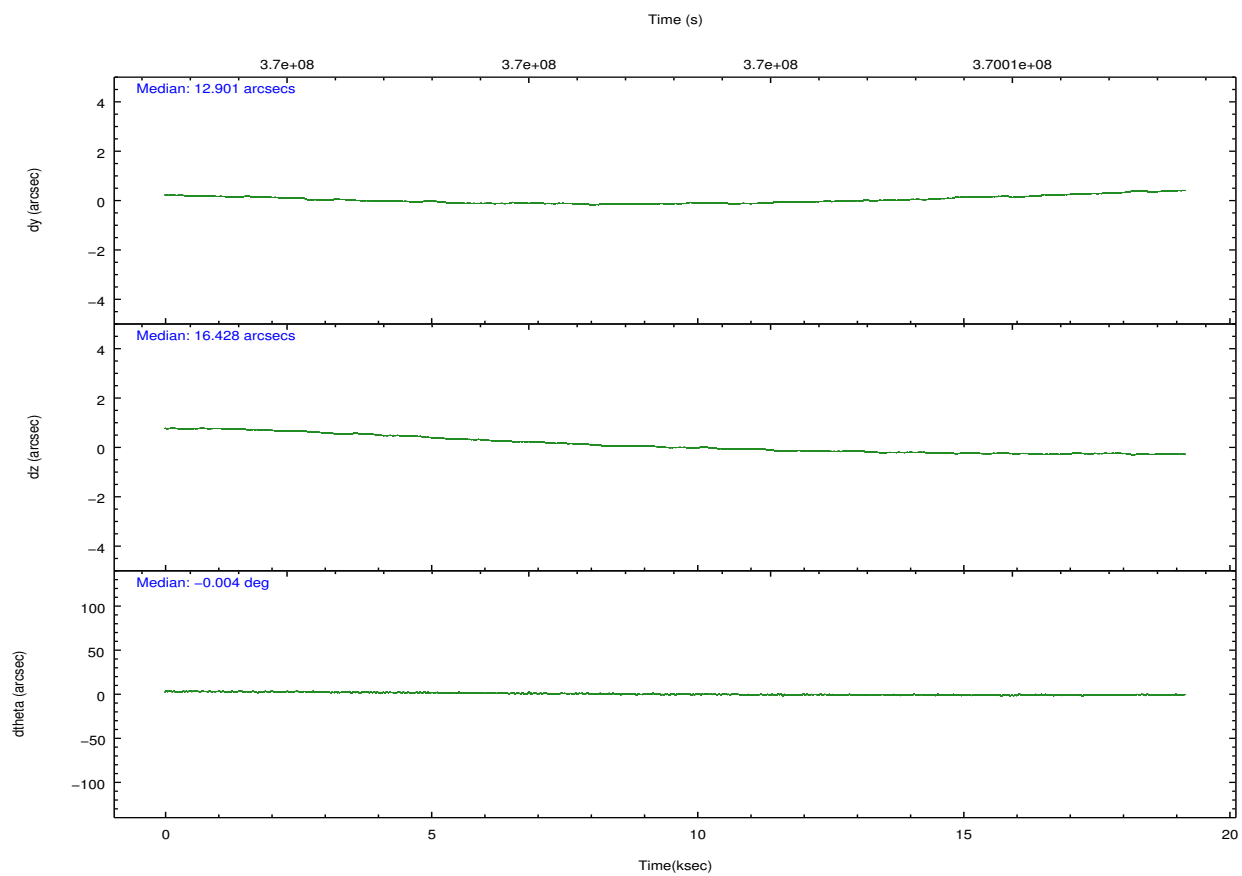
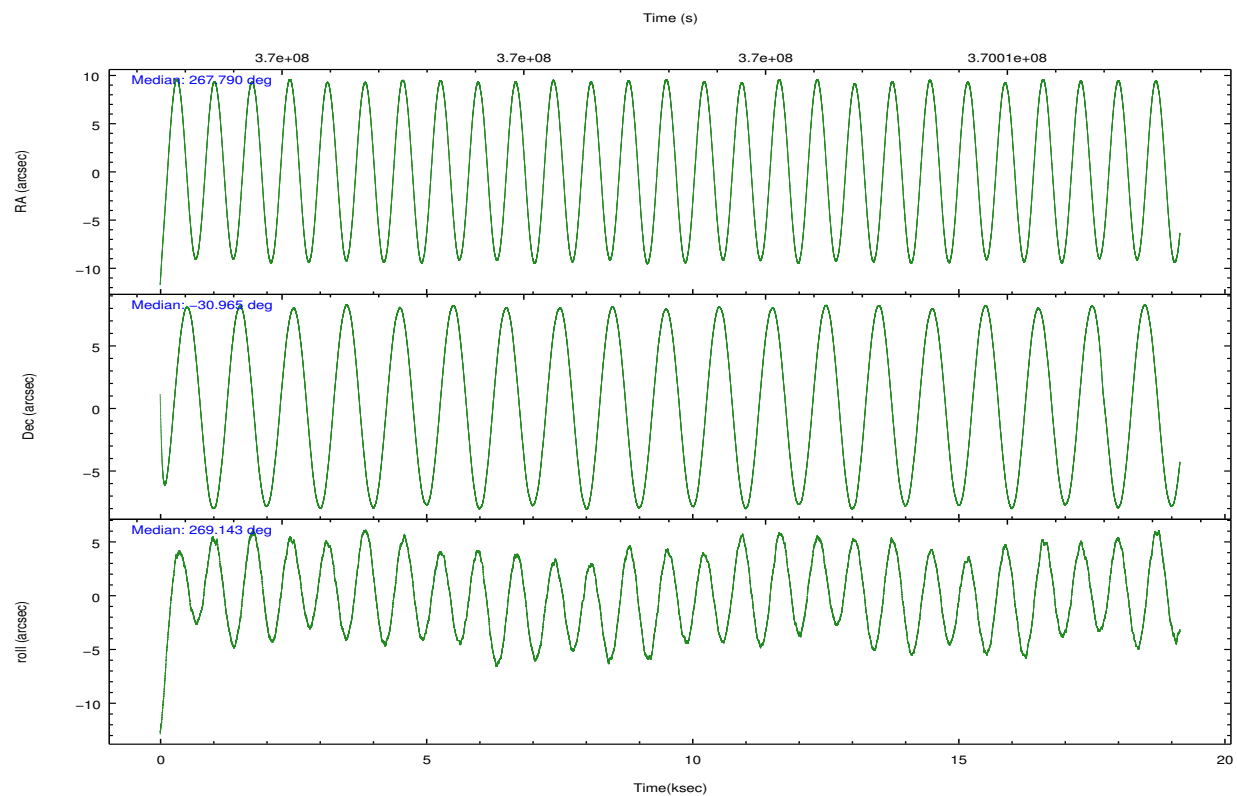
	ccd 4	ccd 5	ccd 6	ccd 7	ccd 8	ccd 9		ccd 4	ccd 5	ccd 6	ccd 7	ccd 8	ccd 9
level 1 events	128921	191724	151891	211454	153957	111568	grade 0 events	11504	25327	36544	13498	19932	6034
rejected events	106042	93256	94430	97317	108835	95042		8%	13%	24%	6%	12%	5%
rejected %	82%	48%	62%	46%	70%	85%	grade 1 events	56	275	195	306	103	40
								0%	0%	0%	0%	0%	0%
							grade 2 events	5939	27460	10622	31979	9949	4706
								4%	14%	6%	15%	6%	4%
							grade 3 events	1158	2098	2950	8257	3499	1324
								0%	1%	1%	3%	2%	1%
							grade 4 events	1155	2075	2846	8219	3347	1310
								0%	1%	1%	3%	2%	1%
							grade 5 events	3602	8153	4518	11010	5898	4539
								2%	4%	2%	5%	3%	4%
							grade 6 events	3470	43206	5144	53803	9025	3436
								2%	22%	3%	25%	5%	3%
							grade 7 events	102037	83130	89072	84382	102204	90179
								79%	43%	58%	39%	66%	80%

2.2 Compared Parameters

Parameter	Planned	Actual	Parameter	Planned	Actual
Instrument	ACIS	ACIS	Obspar format version number	7	7
Detector	ACIS-456789	ACIS-456789	Obspar file type	PREDICTED	ACTUAL
Grating	HETG	HETG	Obspar update status	NONE	UPDATED
Data mode	GRADED	GRADED	CCD I0 on	N	N
Observation mode	POINTING	POINTING	CCD I1 on	N	N
[deg] Pointing RA	267.774486	267.7903902906661	CCD I2 on	N	N
[deg] Pointing Dec	-30.941579	-30.96528500062899	CCD I3 on	N	N
[deg] Pointing Roll	268.981063	269.1458700328199	CCD S0 on	O1	Y
[mm] SIM focus pos	-0.684267	-0.6828225247311905	CCD S1 on	Y	Y
[mm] SIM defocus	0	0.001444936568705701	CCD S2 on	Y	Y
[mm] SIM translation stage pos	-190.132523	-190.1425803651734	CCD S3 on	Y	Y
[mm] SIM translation stage offset	0	0.01005778216563158	CCD S4 on	Y	Y
[s] Observation start time (MET)	369993594.184000	369992439.39826	CCD S5 on	Y	Y
Observation start date	2009-09-22T07:58:48	2009-09-22T07:40:39	Number of optional ACIS chips dropped	0	0
[s] Observation end time (MET)	370012594.184000	370013523.64932	On-chip summing requested	N	N
Observation end date	2009-09-22T13:15:28	2009-09-22T13:32:03	Subarray requested	CUSTOM	1/2
Read mode	TIMED	TIMED	Subarray start row	257	257
			Subarray row count	512	512
			Alternating exposures requested	N	N
			[s] Primary exposure time	0.000000	1.8

2.3 Aspect



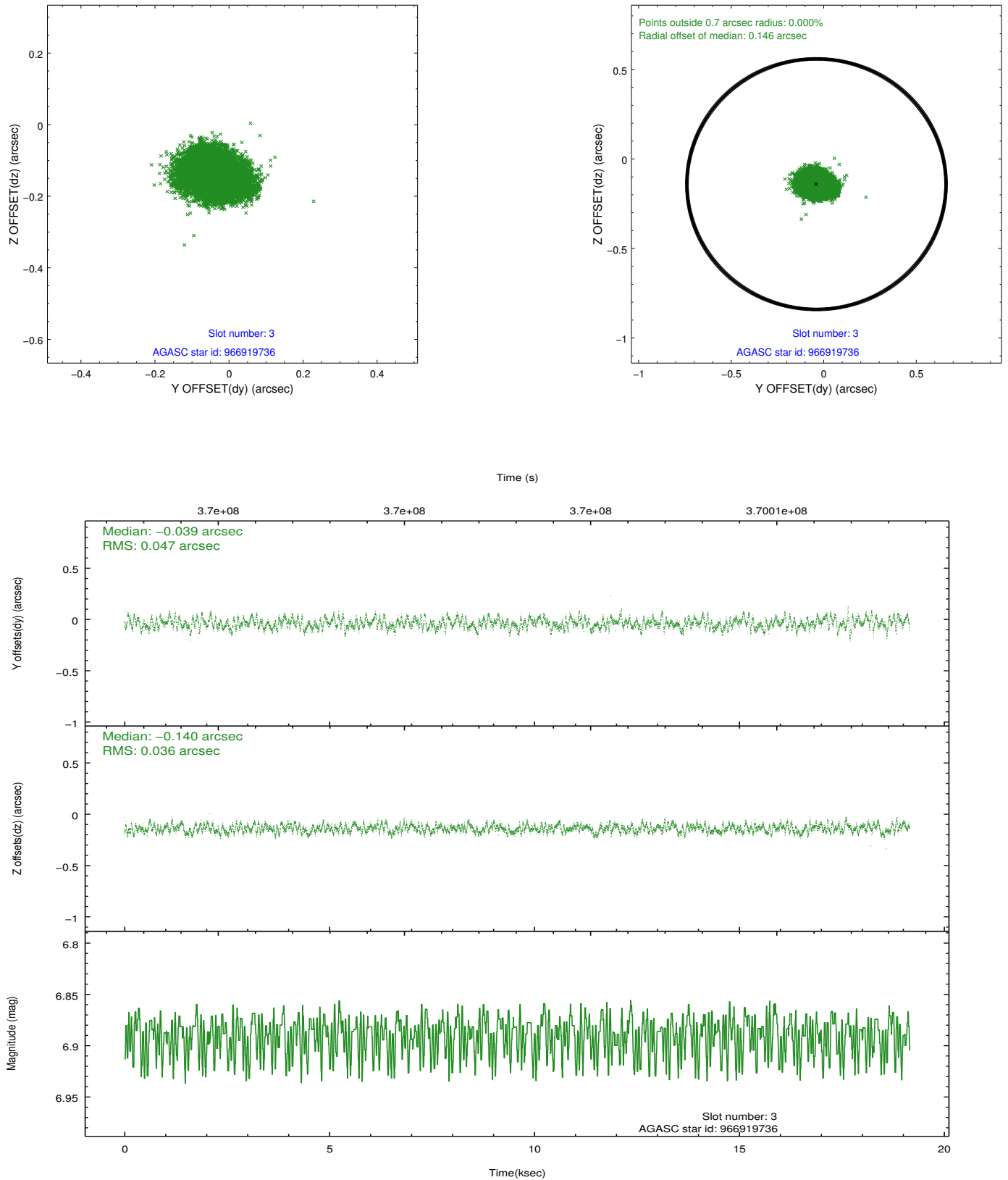


Slot Statistics

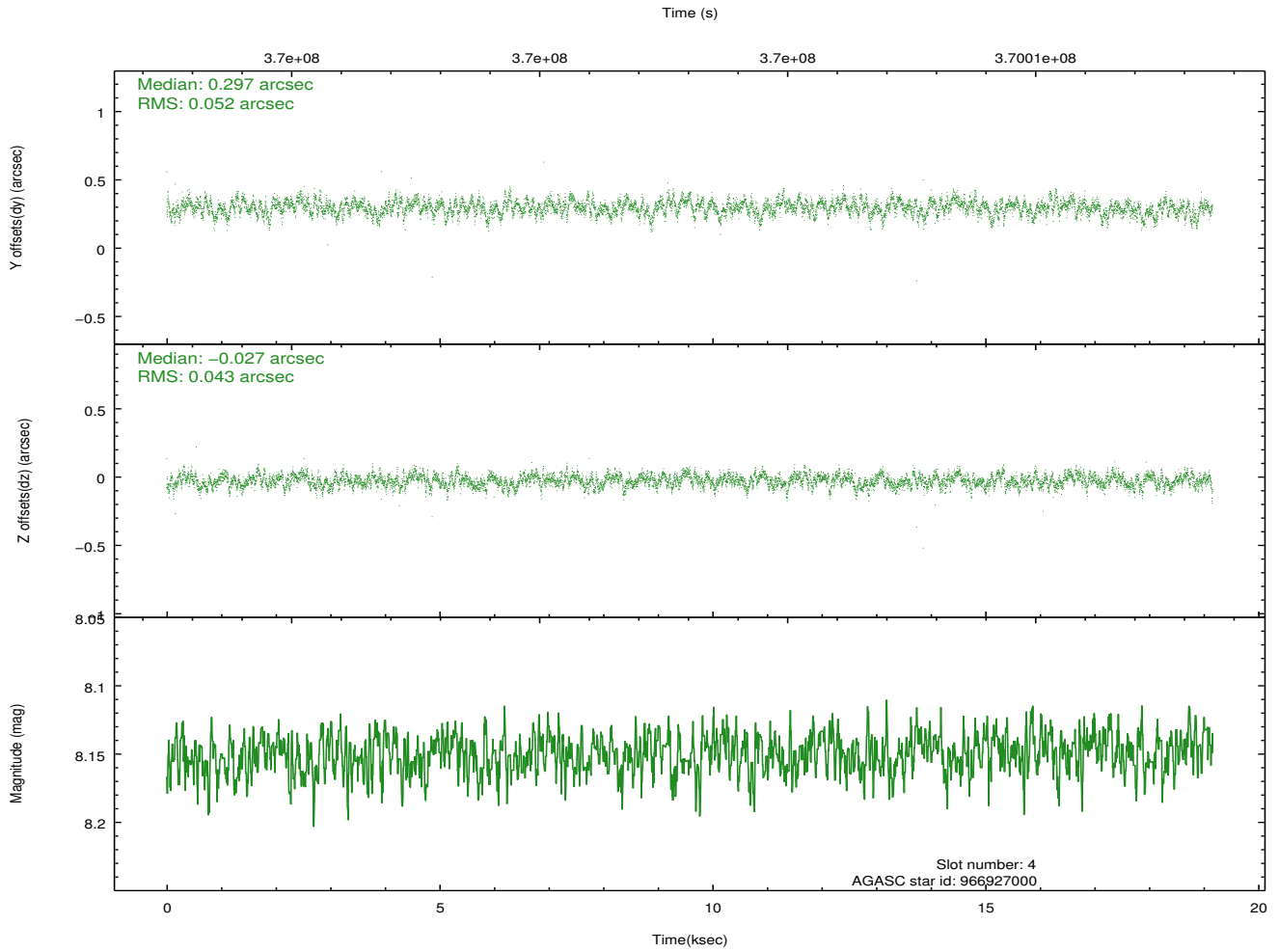
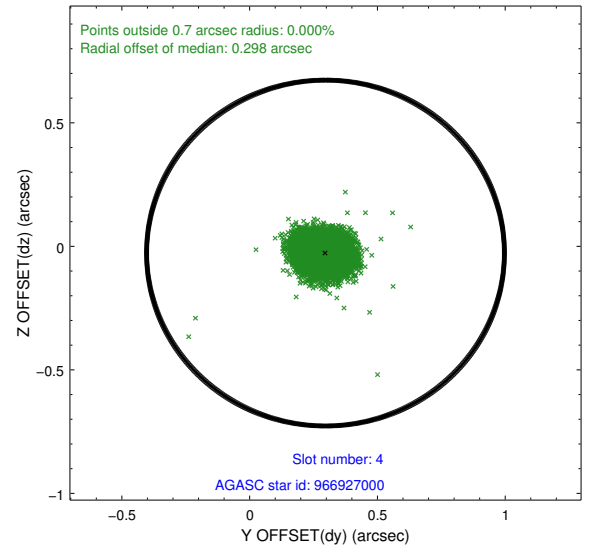
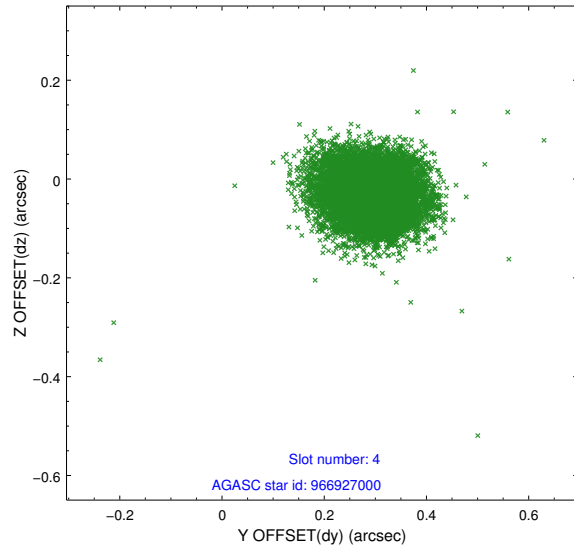
slot	status	id	mag	n_pts	med_dy	med_dz	dr1	dr2	ra	dec	mean_y	mean_z
0	FID	ACIS-S-2	6.85	4673	-0.020	0.004	0.015	0.023	0.000000	0.000000	-765.88	-1737.91
1	FID	ACIS-S-4	6.94	4674	0.112	0.008	0.009	0.017	0.000000	0.000000	2147.44	170.37
2	FID	ACIS-S-5	6.97	4675	-0.125	-0.004	0.013	0.024	0.000000	0.000000	-1818.56	164.26
3	GUIDE	966919736	6.89	9348	-0.039	-0.140	0.063	0.099	267.322278	-30.597445	-1210.18	-1422.49
4	GUIDE	966927000	8.15	9347	0.297	-0.027	0.070	0.117	267.318997	-31.255021	1156.61	-1381.39
5	GUIDE	966926496	8.11	9346	-0.253	-0.056	0.066	0.104	267.109389	-30.299474	-2267.95	-2108.60
6	GUIDE	966920512	8.37	9345	-0.098	0.029	0.066	0.105	267.231170	-30.494681	-1574.46	-1713.80
7	GUIDE	967051912	8.45	9345	0.095	0.195	0.063	0.100	268.273969	-31.339032	1407.05	1561.30

2.4 Star Slots

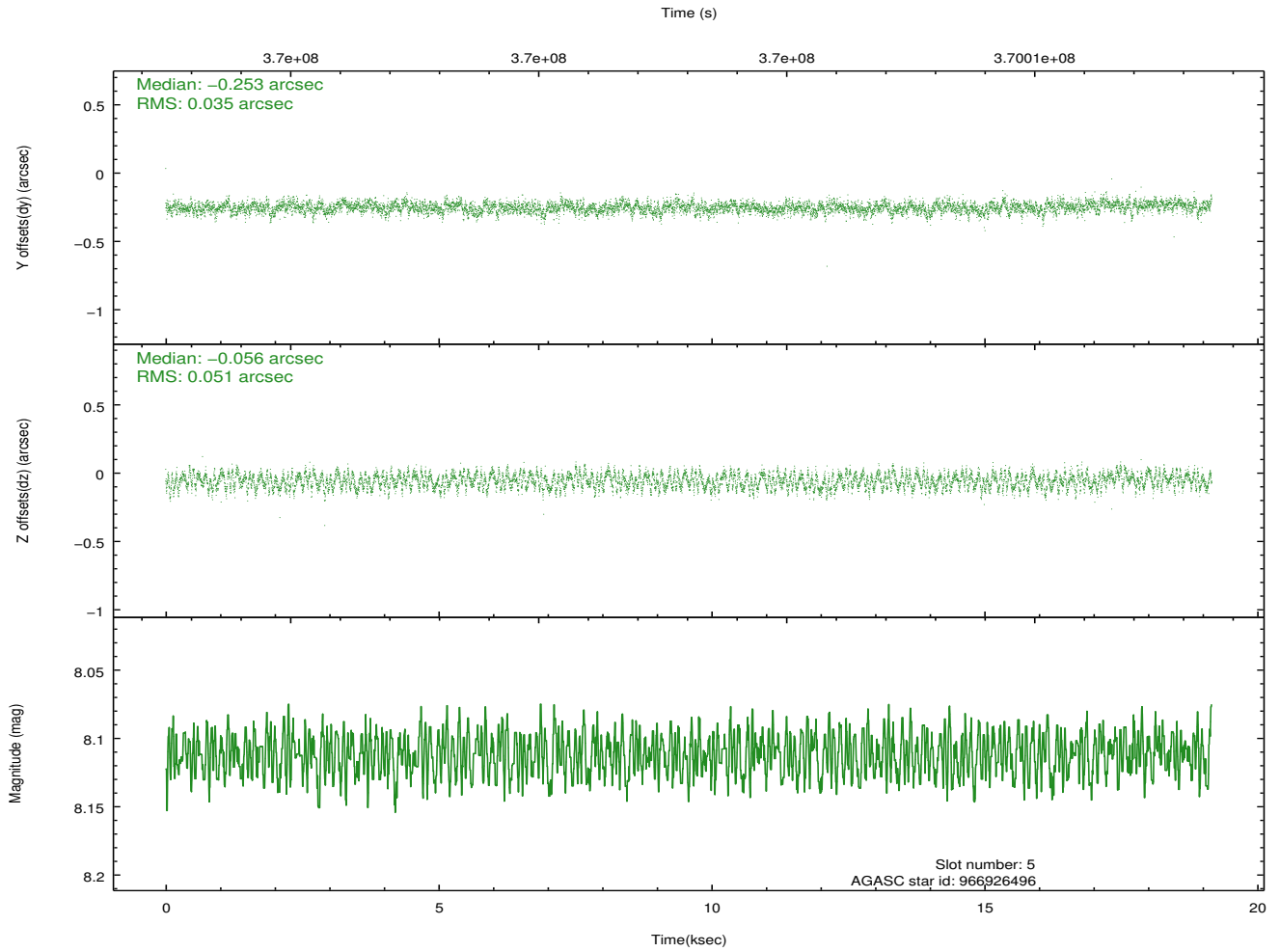
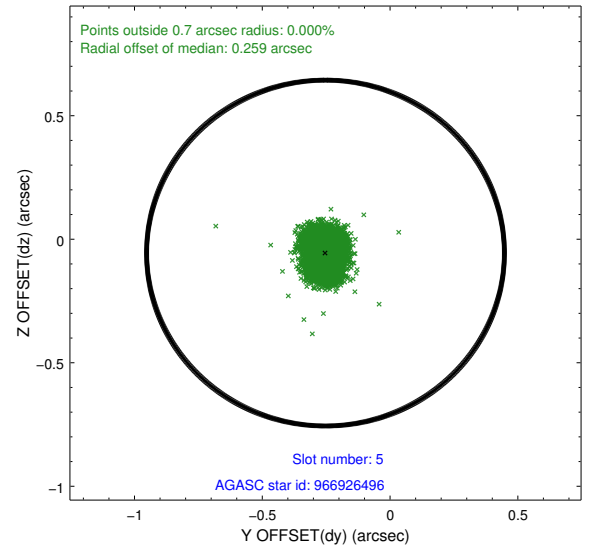
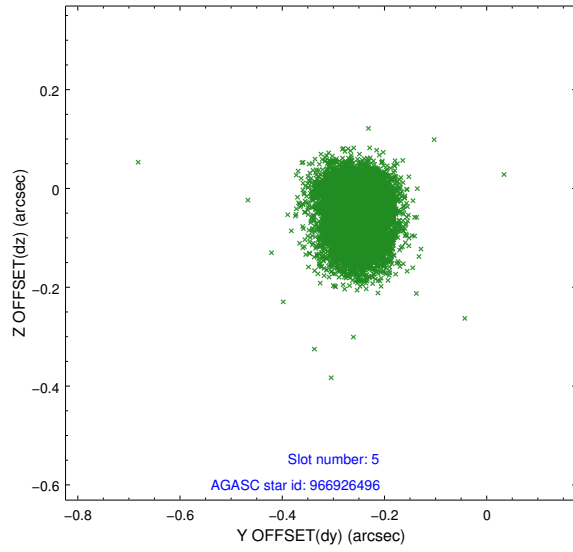
2.4.1 Slot 3



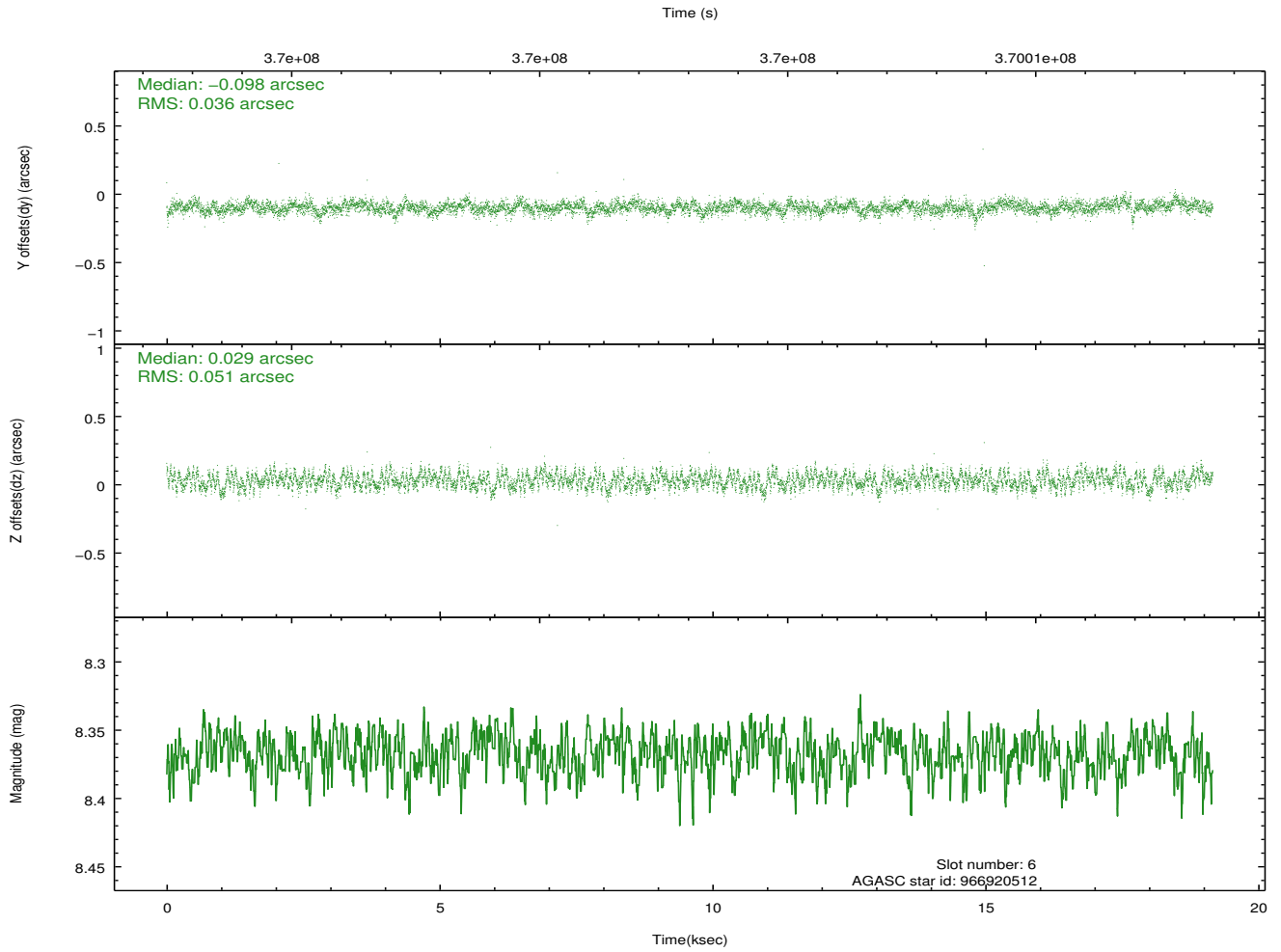
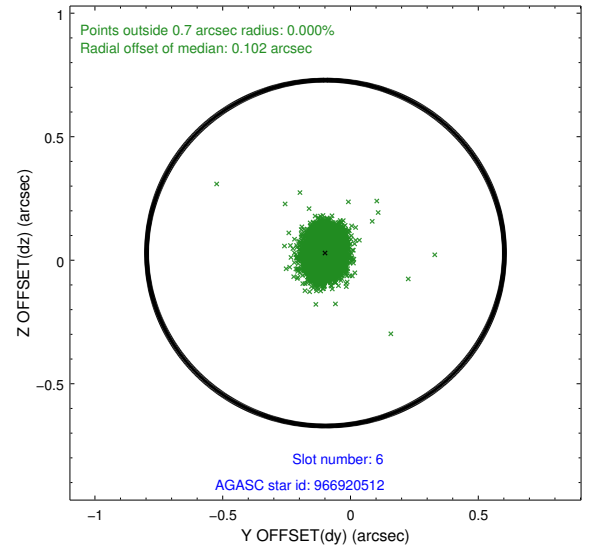
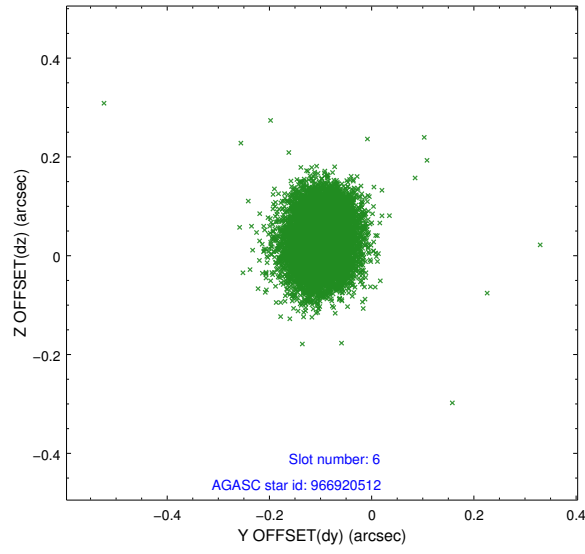
2.4.2 Slot 4



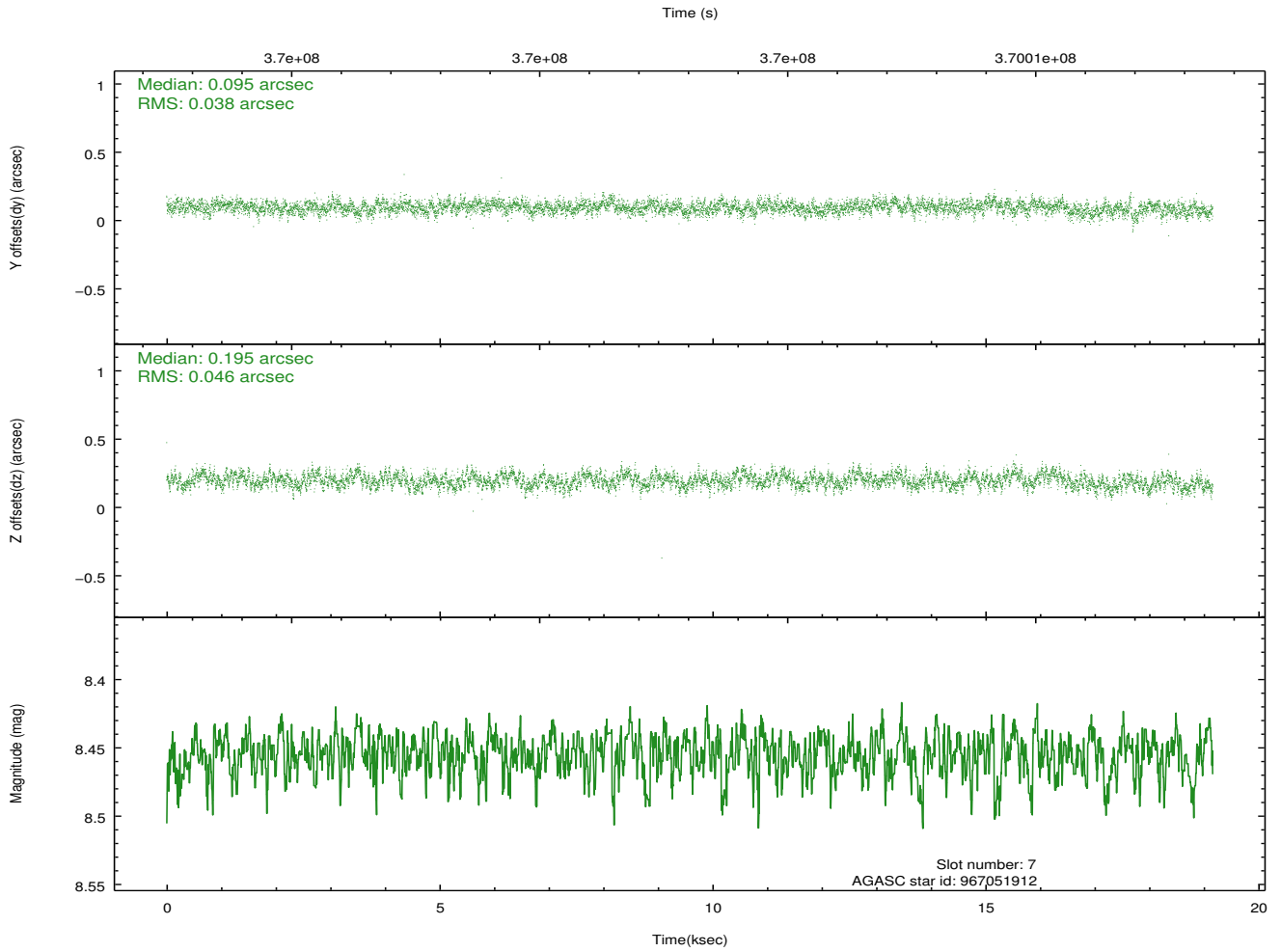
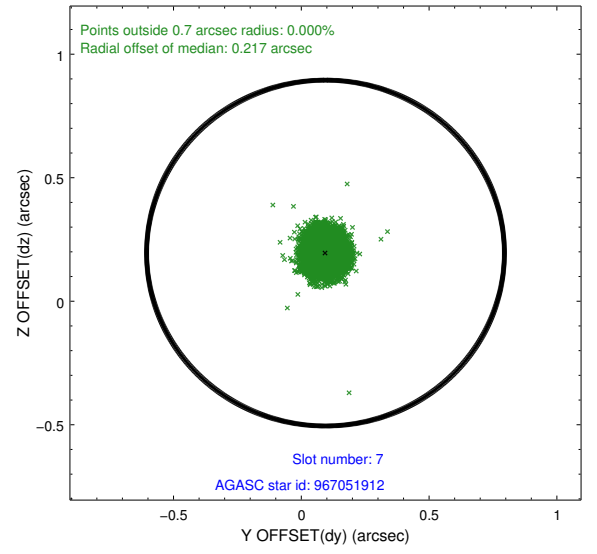
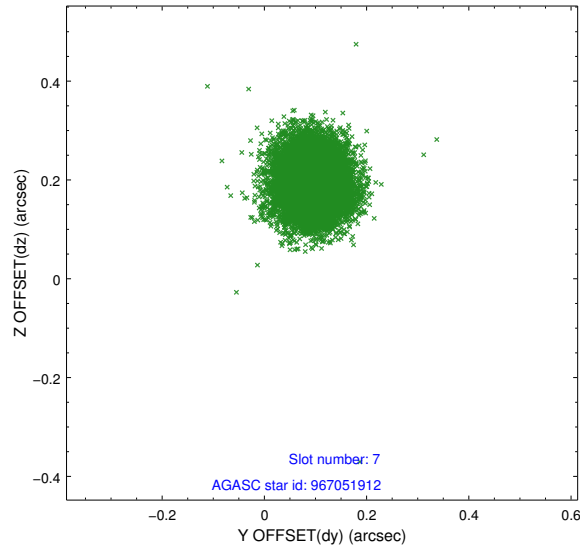
2.4.3 Slot 5



2.4.4 Slot 6

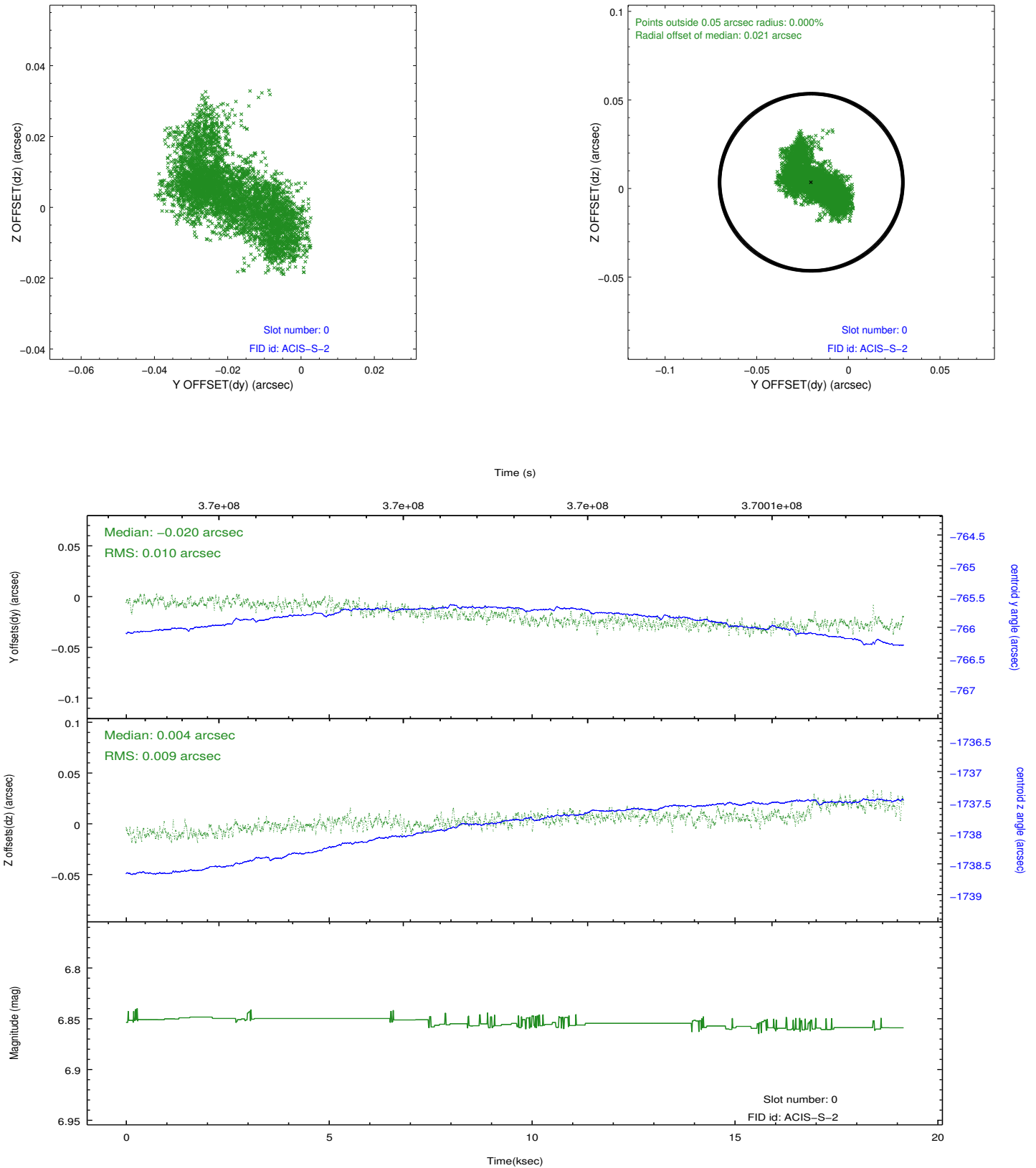


2.4.5 Slot 7

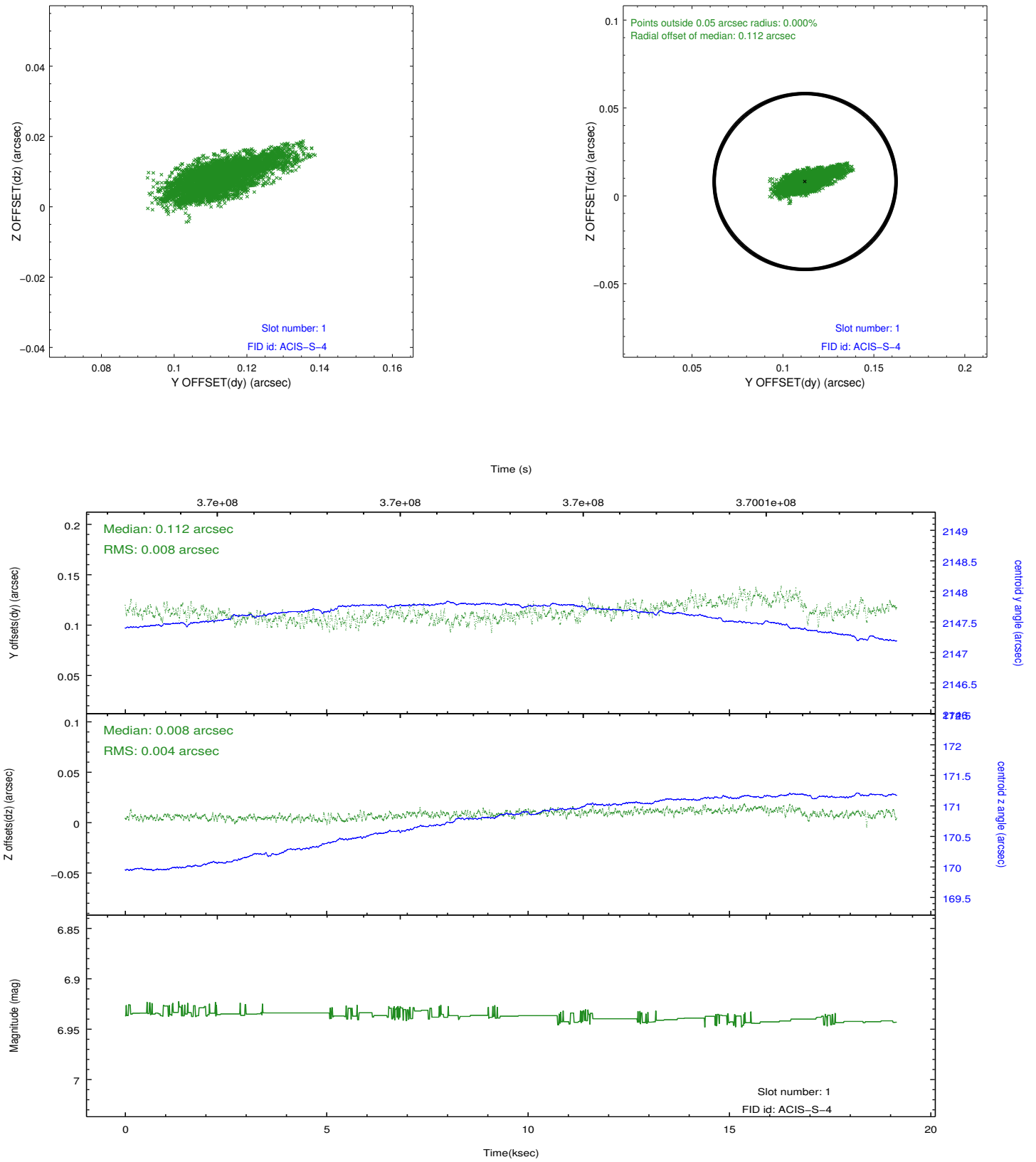


2.5 FID Slots

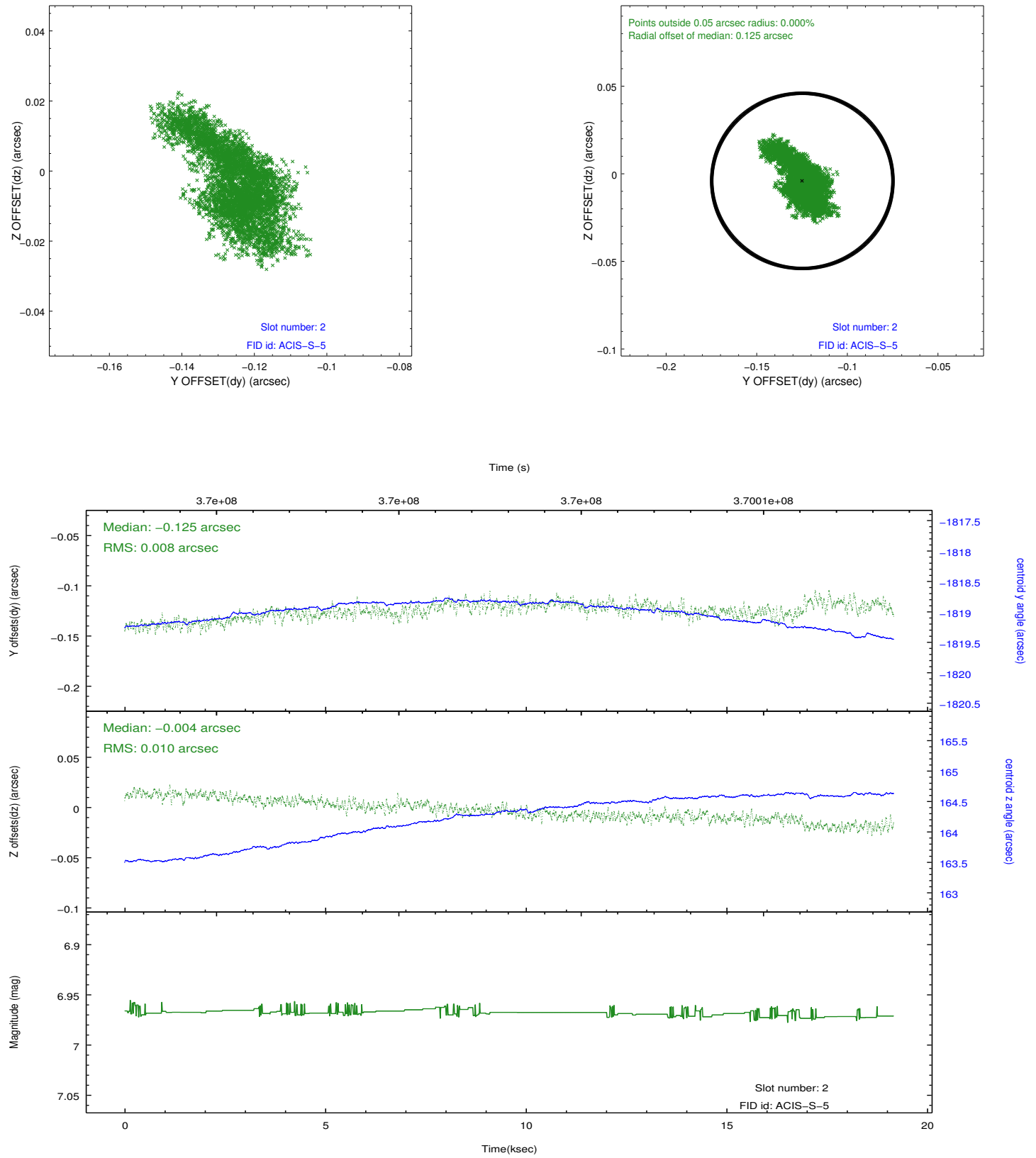
2.5.1 Slot 0



2.5.2 Slot 1

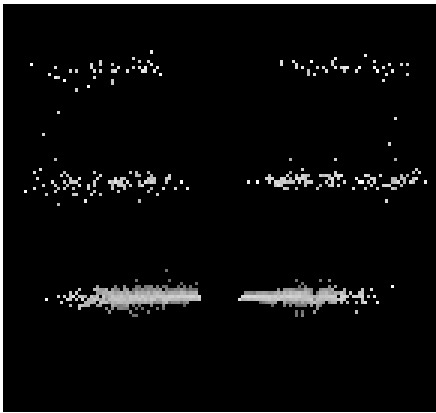


2.5.3 Slot 2

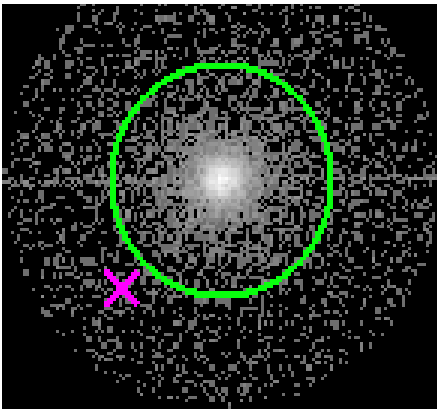


3 Gratings

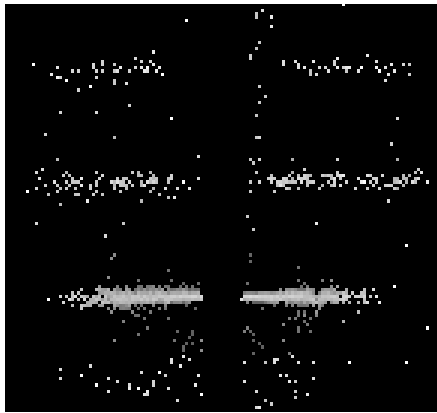
3.1 HEG Arm



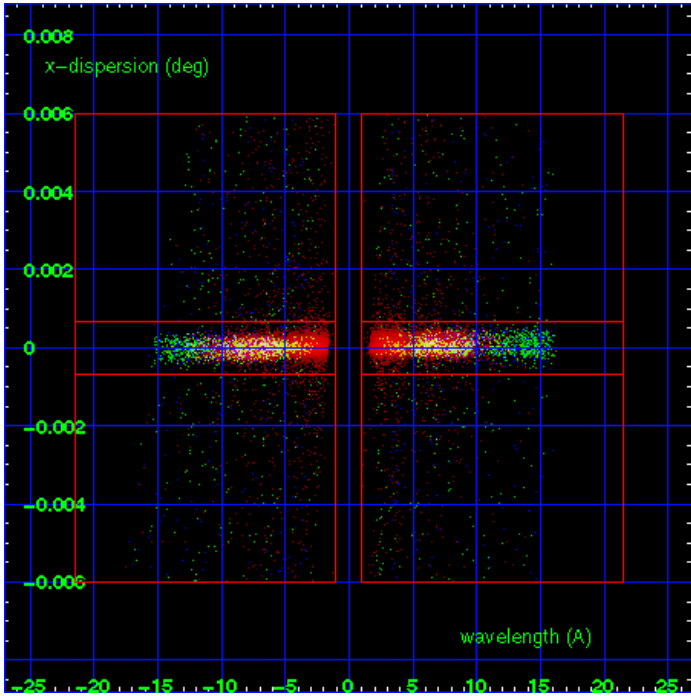
HEG Order Sort 123



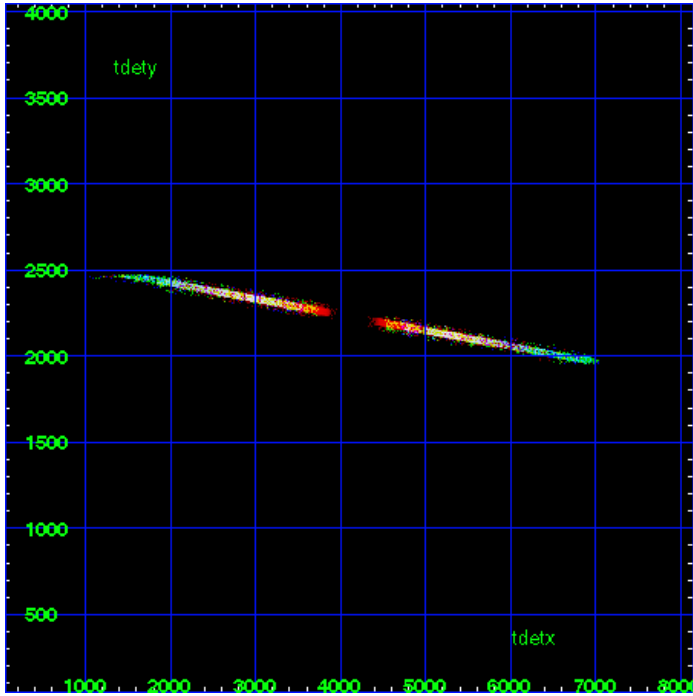
HEG Zero Order



HEG Order Sort ALL

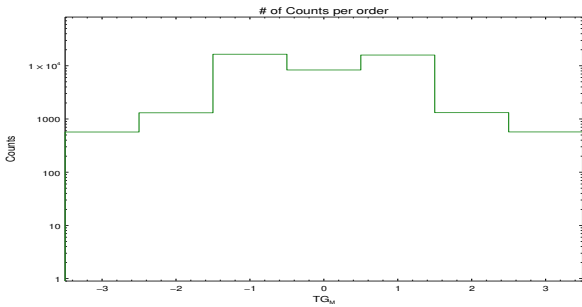


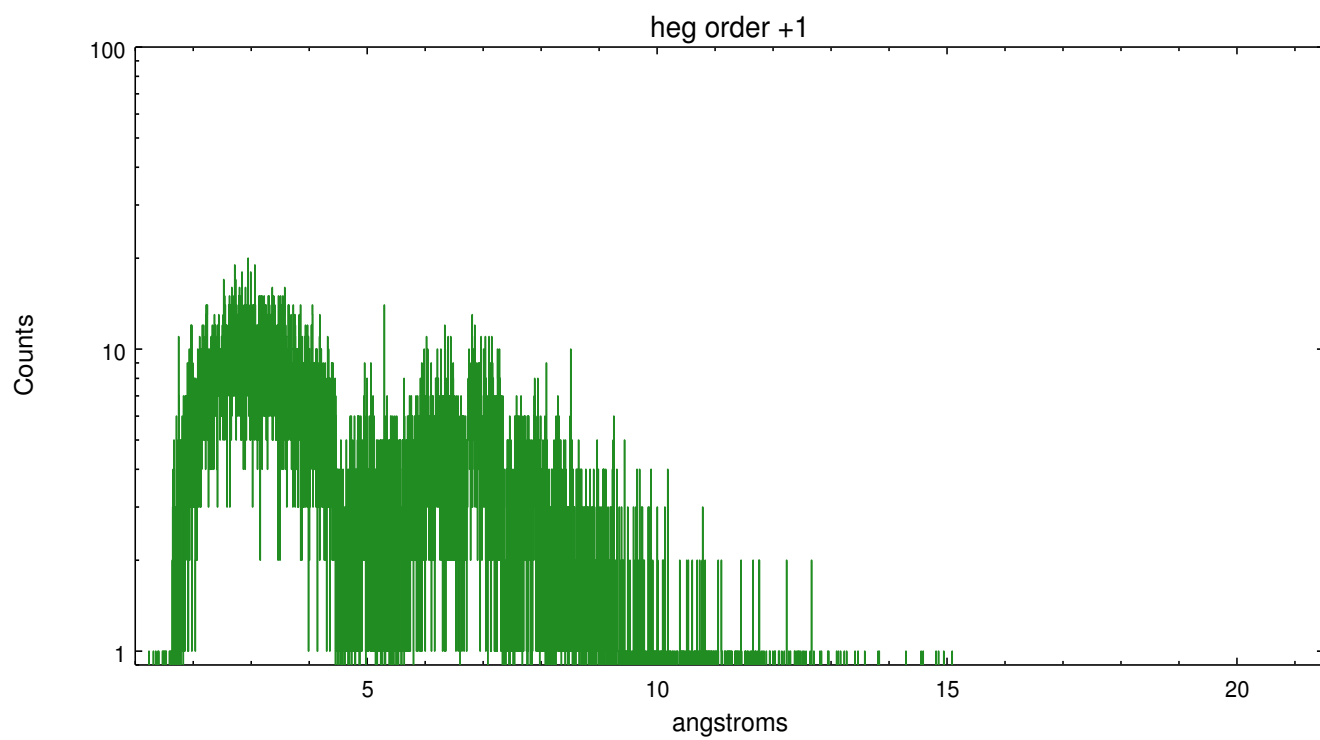
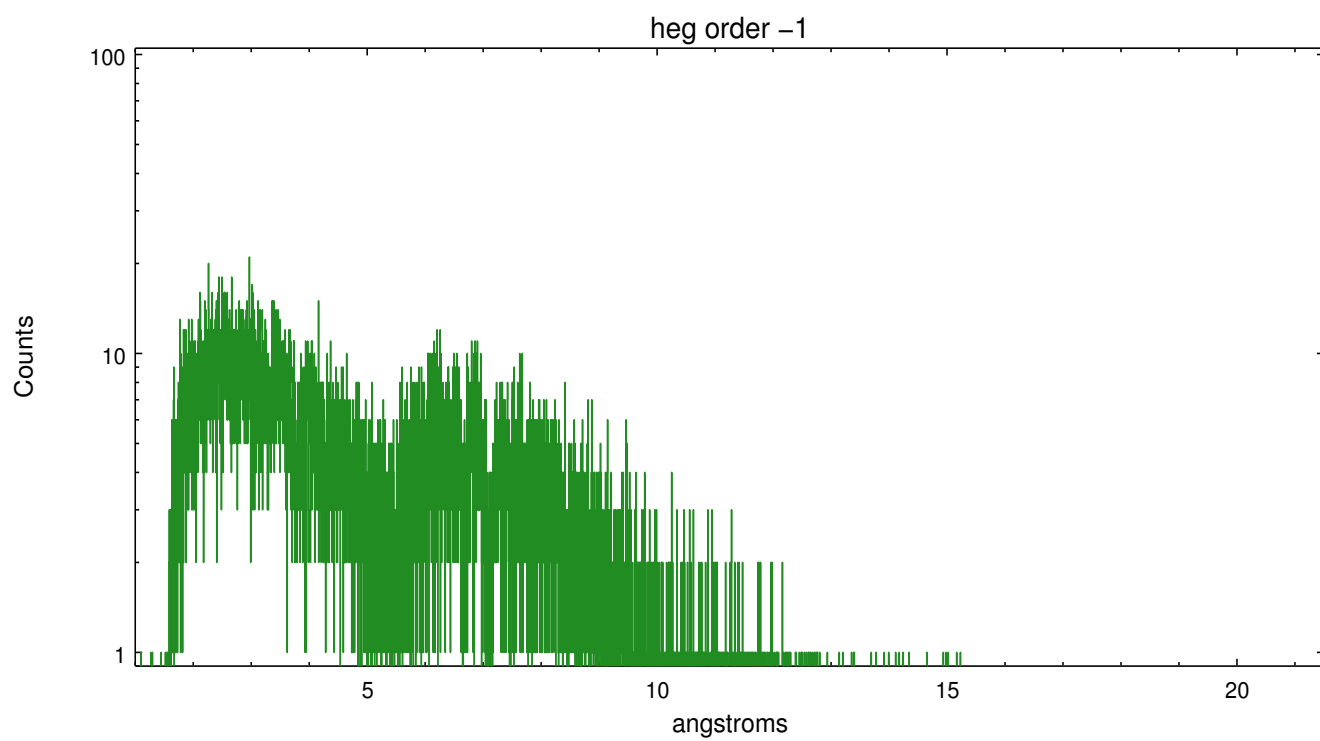
Spot Image HEG



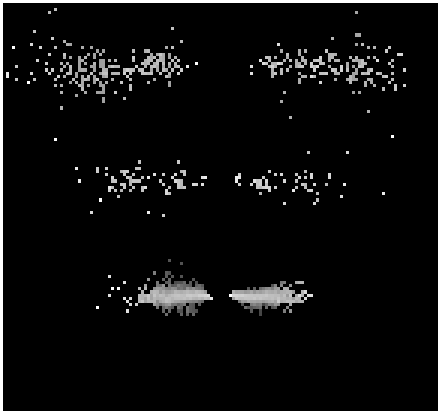
Full Detector HEG

	order -3	order -2	order -1	order 0	order 1	order 2	order 3
Events	569	1307	16474	8338	15909	1316	571

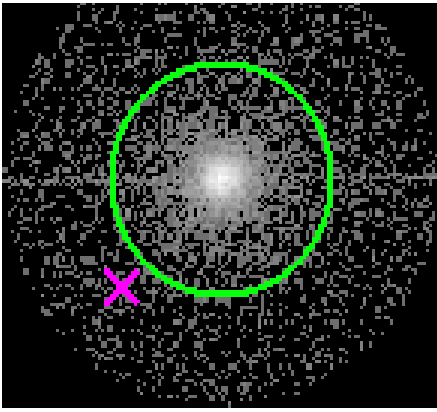




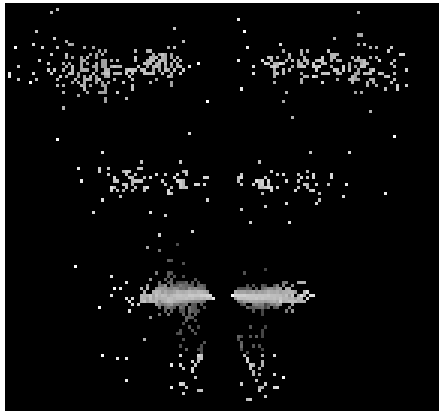
3.2 MEG Arm



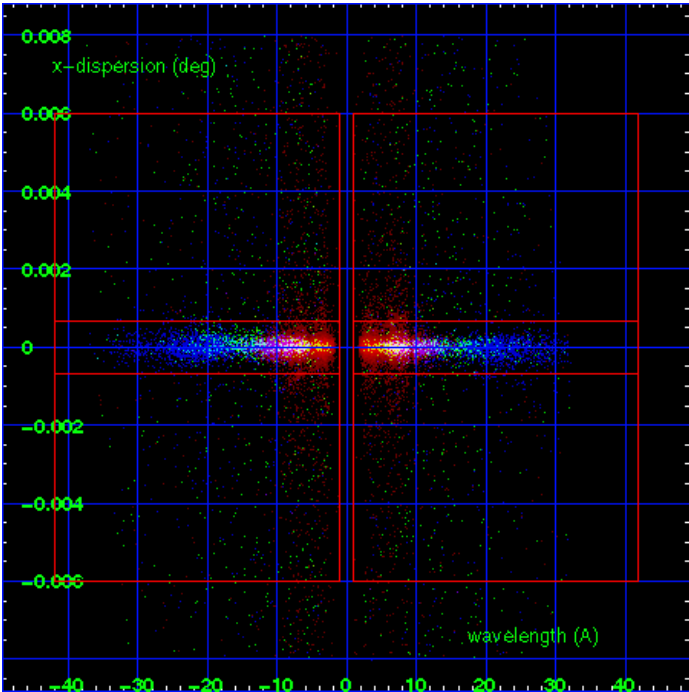
MEG Order Sort 123



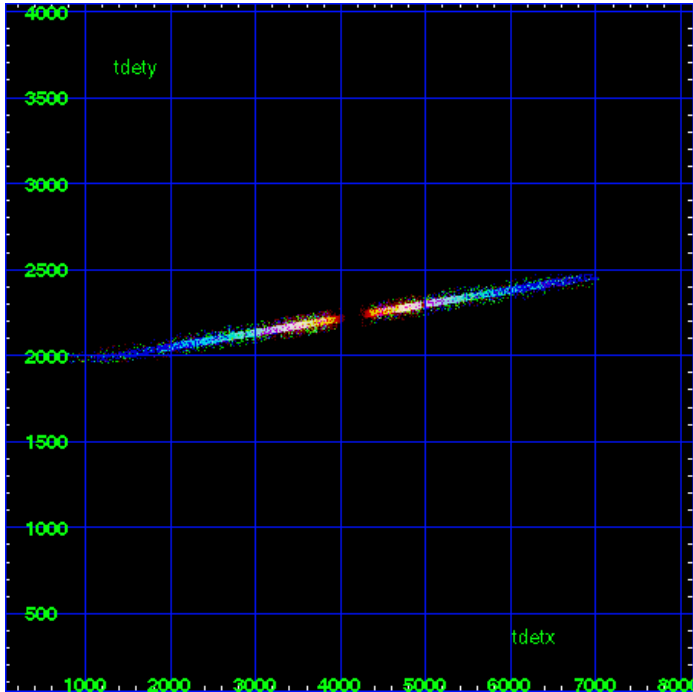
MEG Zero Order



MEG Order Sort ALL

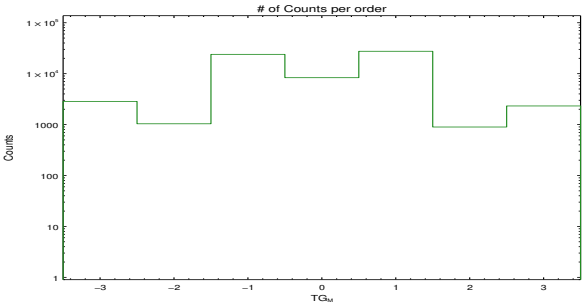


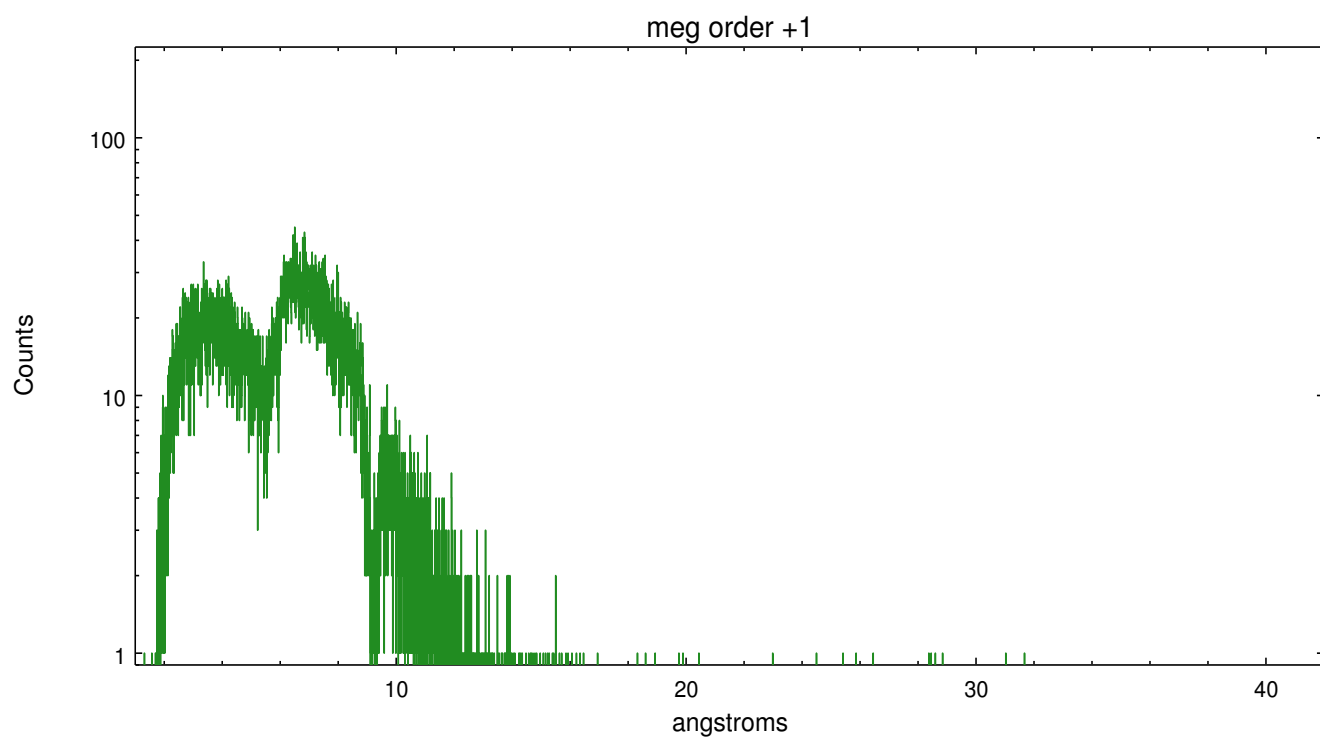
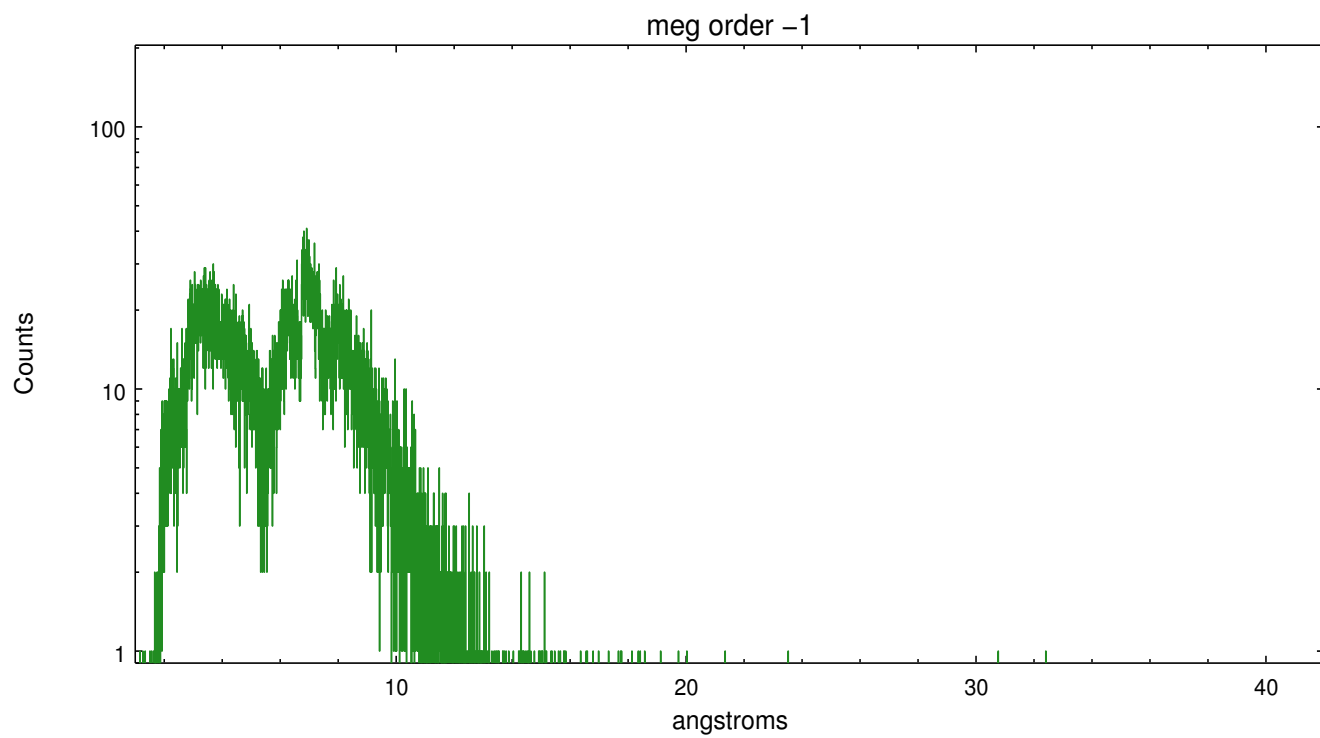
Spot Image MEG



Full Detector MEG

	order -3	order -2	order -1	order 0	order 1	order 2	order 3
Events	2853	1037	23930	8338	27504	896	2322





A Summary

A.1 Status

V&V Scientist	David Huenemoerder
V&V Date (YYYY-MM-DD)	2012.06.22
V&V Edition	1
V&V Disposition and Status	OK
V&V Charge Time	19.159200126827

A.2 Comments