

# V&V Reference Report

## L2 ASCDS Version : 8.4.5

Observation 9950 - L2 Version 3  
Chandra X-Ray Center

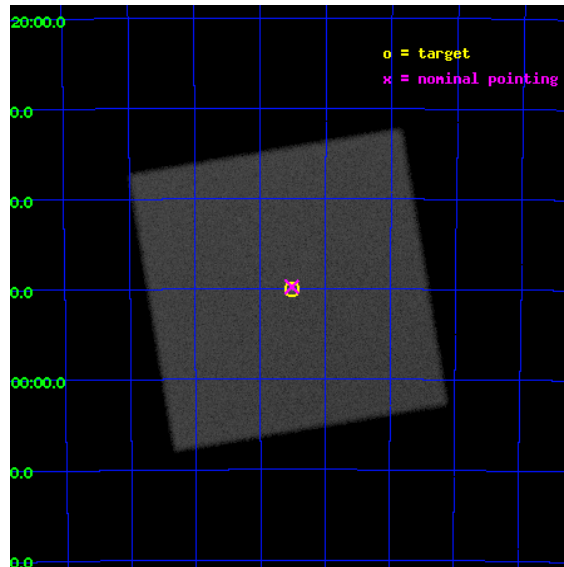
L2 Processing Date : Aug 13 2012

## Contents

<b>1</b>	<b>Front</b>	<b>2</b>
<b>2</b>	<b>OBI</b>	<b>3</b>
2.1	OBI . . . . .	3
2.1.1	Images . . . . .	3
2.1.2	Parameters . . . . .	4
2.1.3	Events . . . . .	4
2.2	Compared Parameters . . . . .	5
2.3	Aspect . . . . .	6
2.4	Star Slots . . . . .	9
2.4.1	Slot 3 . . . . .	9
2.4.2	Slot 4 . . . . .	10
2.4.3	Slot 5 . . . . .	11
2.4.4	Slot 6 . . . . .	12
2.4.5	Slot 7 . . . . .	13
2.5	FID Slots . . . . .	14
2.5.1	Slot 0 . . . . .	14
2.5.2	Slot 1 . . . . .	15
2.5.3	Slot 2 . . . . .	16
<b>A</b>	<b>Summary</b>	<b>17</b>
A.1	Status . . . . .	17
A.2	Comments . . . . .	17

# 1 Front

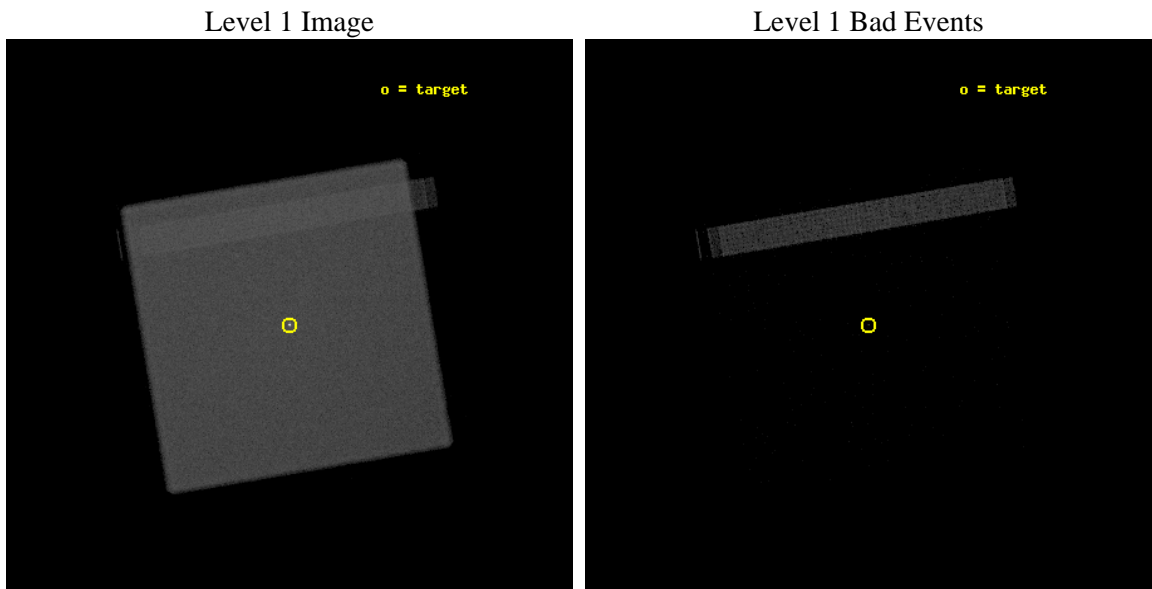
seq_num	200563	Sequence number
obs_id	9950	Observation id
title	The Cycles of Alpha Centauri	Proposal title
observer	Dr. Thomas Ayres	Principal investigator
object	Alpha Centauri	Source name
ra_targ	219.880833	Observer's specified target RA [deg]
dec_targ	-60.833611	Observer's specified target Dec [deg]
ra_nom	219.87877082683	Nominal RA [deg]
dec_nom	-60.829518778051	Nominal Dec [deg]
roll_nom	125.47725349538	Nominal Roll [deg]
revision	3	Processing version of data
ontime	10173.381763816	[s]
livetime	10045.918683562	Ontime multiplied by DTCOR
l2events	818340	Number of level 2 events



## 2 OBI

### 2.1 OBI

#### 2.1.1 Images



### 2.1.2 Parameters

obi_num	0	Obi number	sched_exp_time	10000.000000	[s] Scheduled observation exposure time
ascdsver	8.4.5	Processing system revision	ontime	10173.381763816	[s]
caldsver	4.5.1.1	&#160	l1events	1322680	Number of level 1 events
date	2012-08-13T19:56:41	Date and time of file creation			
revision	3	Processing version of data			

### 2.1.3 Events

#### Level 1 Events

	<b>segment 0</b>
level 1 events	1322680
rejected events	147836
rejected %	11%

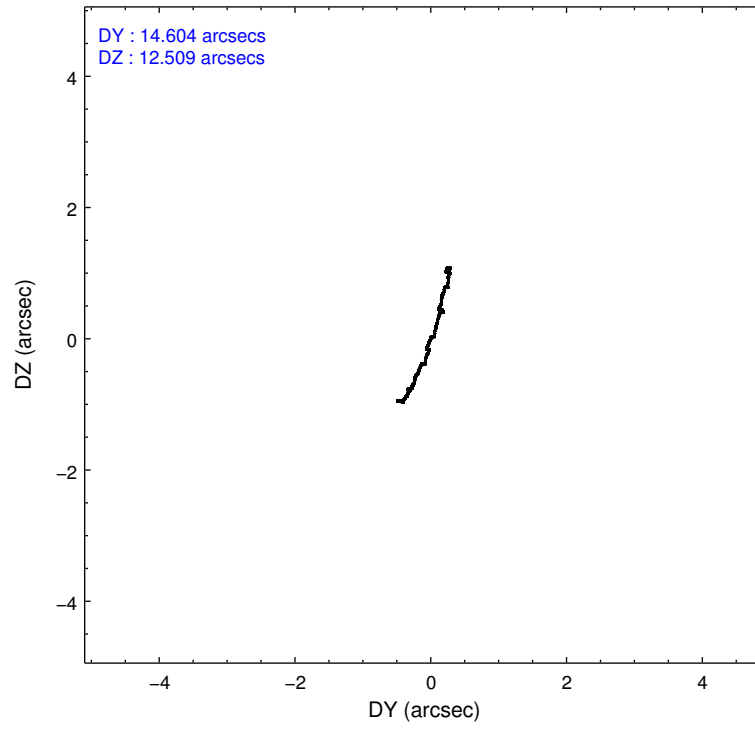
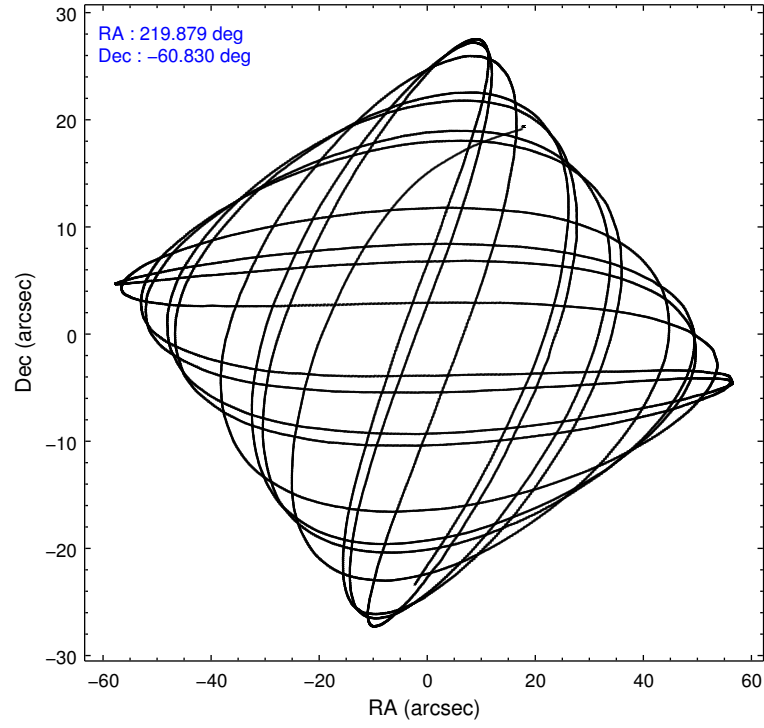


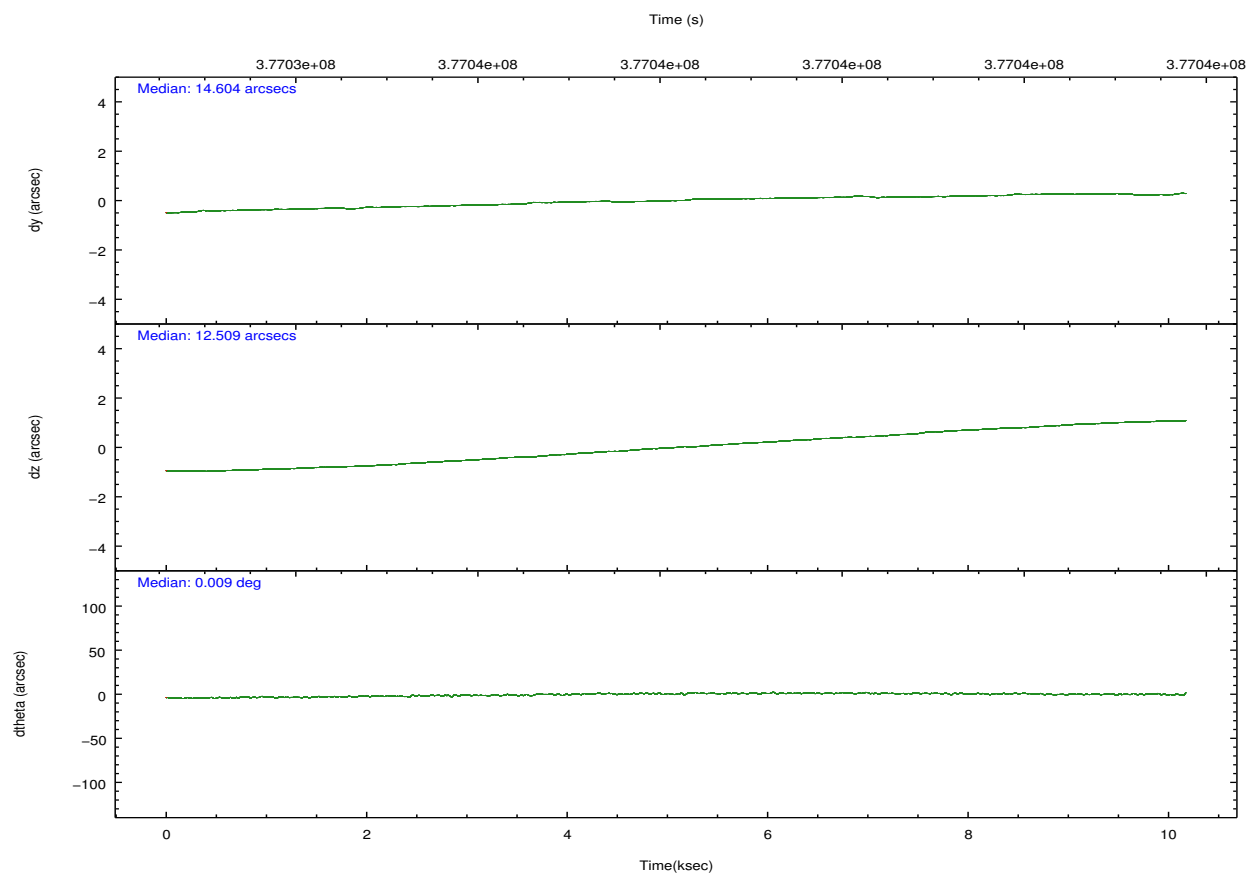
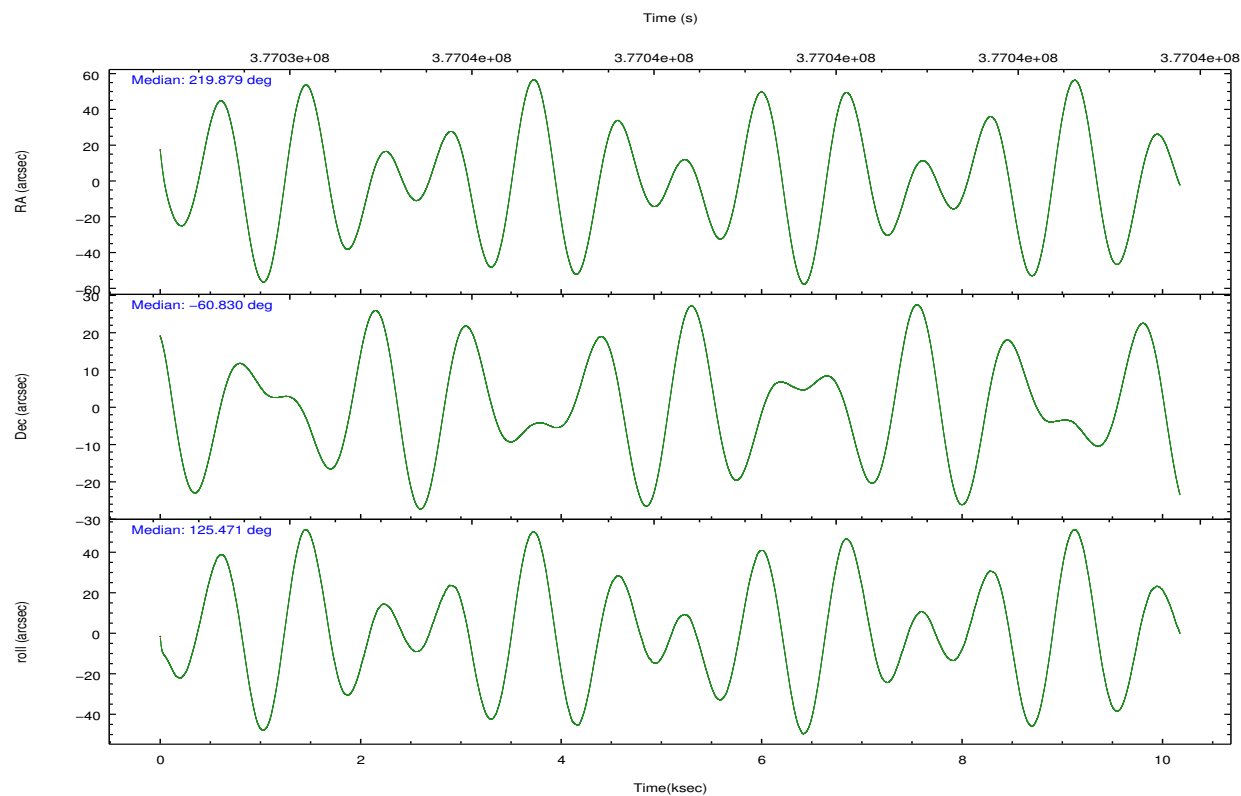
## 2.2 Compared Parameters

Parameter	Planned	Actual
Instrument	HRC	HRC
Detector	HRC-I	HRC-I
Grating	NONE	NONE
Data mode	OBSERVING	OBSERVING
Observation mode	POINTING	POINTING
[deg] Pointing RA	219.930070	219.8787708268313
[deg] Pointing Dec	-60.840221	-60.82951877805147
[deg] Pointing Roll	125.617561	125.4772534953821
[mm] SIM focus pos	-1.040293	-1.038866356238299
[mm] SIM defocus	0	0.001426264420575141
[mm] SIM translation stage pos	126.985494	126.9829799899862
[mm] SIM translation stage offset	0	0.002508901615314585
[s] Observation start time (MET)	377033261.184000	377032214.57786
Observation start date	2009-12-12T19:26:35	2009-12-12T19:10:14
[s] Observation end time (MET)	377043261.184000	377044410.02848
Observation end date	2009-12-12T22:13:15	2009-12-12T22:33:30

Parameter	Planned	Actual
Obspar format version number	7	7
Obspar file type	PREDICTED	ACTUAL
Obspar update status	NONE	UPDATED

## 2.3 Aspect



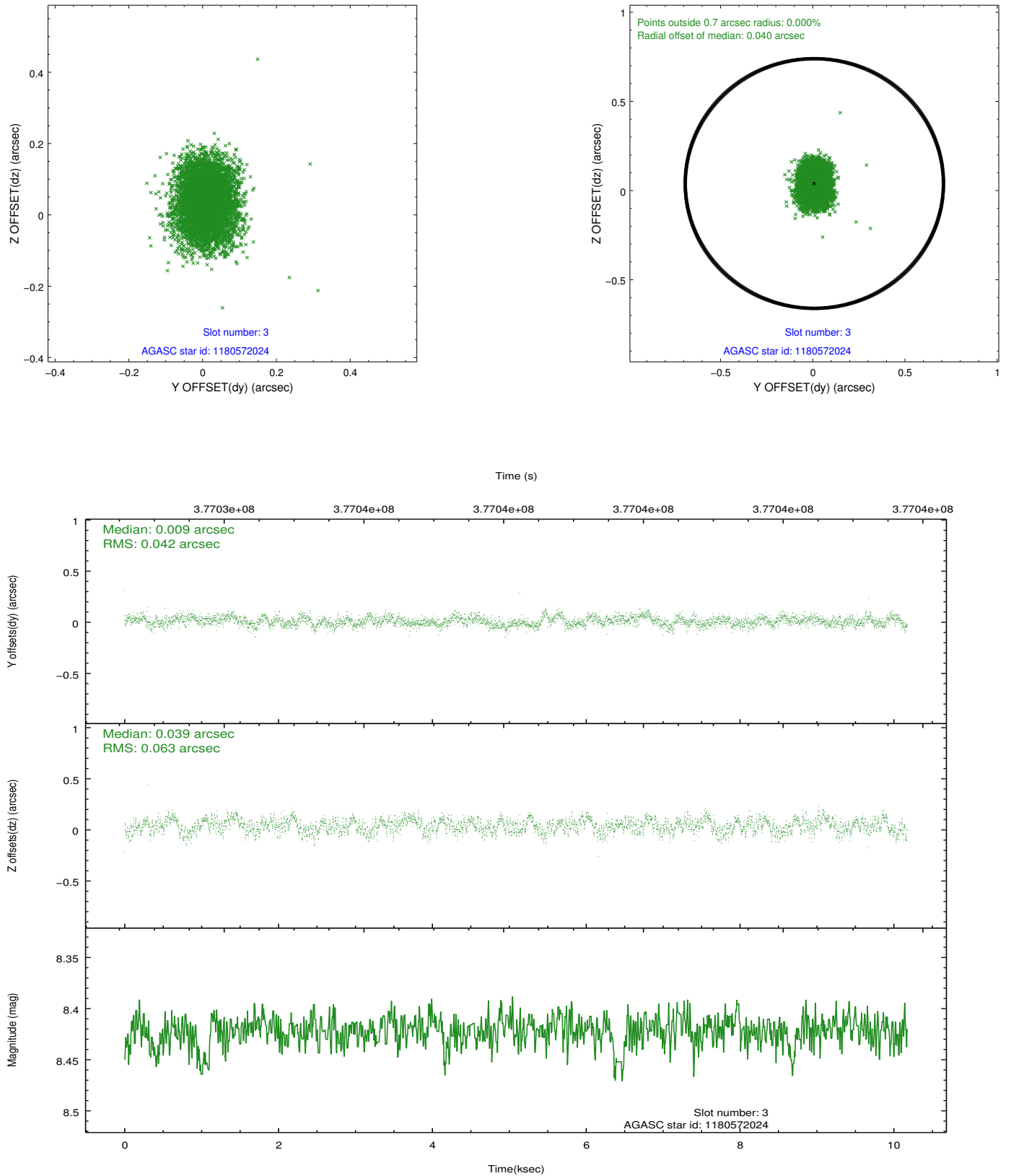


### Slot Statistics

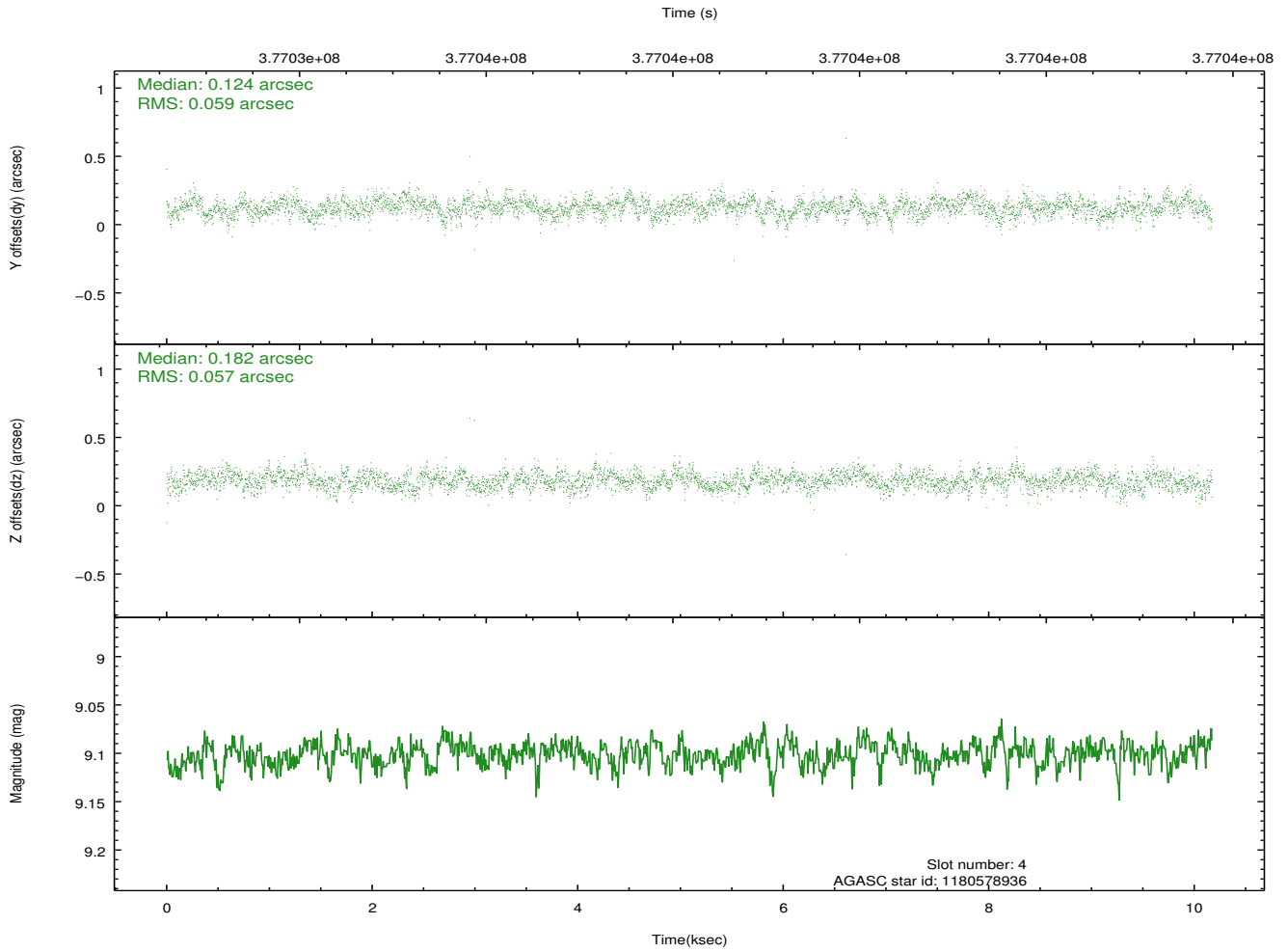
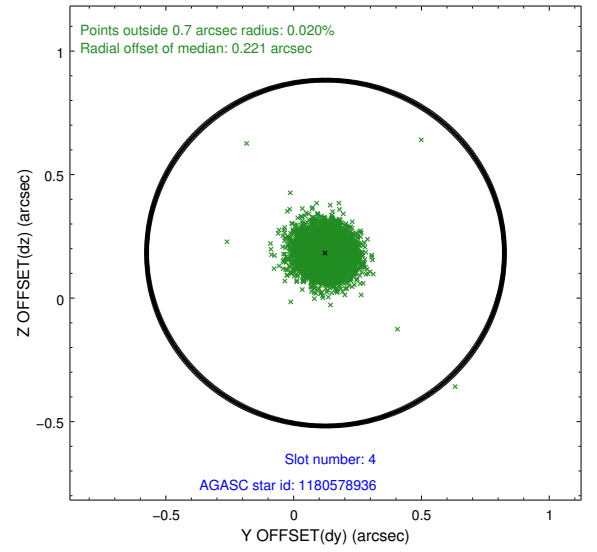
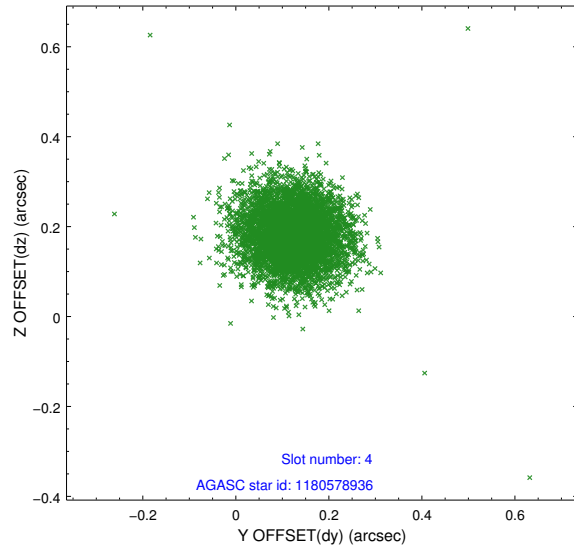
slot	status	id	mag	n_pts	med_dy	med_dz	dr1	dr2	ra	dec	mean_y	mean_z
0	FID	HRC-I-1	6.93	2482	-0.067	0.034	0.017	0.026	0.000000	0.000000	-770.44	-1300.49
1	FID	HRC-I-2	6.97	2482	0.233	-0.144	0.013	0.025	0.000000	0.000000	842.18	-1302.76
2	FID	HRC-I-3	7.02	2481	-0.049	0.023	0.013	0.022	0.000000	0.000000	-1198.55	1003.54
3	GUIDE	1180572024	8.42	4959	0.009	0.039	0.080	0.131	220.930377	-60.981487	-1441.11	-1115.73
4	GUIDE	1180578936	9.10	4961	0.124	0.182	0.086	0.139	220.919358	-61.155393	-1933.26	-728.17
5	GUIDE	1180589152	9.28	4956	0.059	-0.183	0.100	0.164	219.760705	-61.382926	-1418.67	1375.44
6	GUIDE	1180579504	9.59	4948	-0.034	-0.090	0.127	0.218	219.500103	-61.658654	-1969.52	2315.15
7	GUIDE	1180607728	9.33	4956	-0.153	0.044	0.117	0.195	219.907127	-60.060122	2306.95	-1600.83

## 2.4 Star Slots

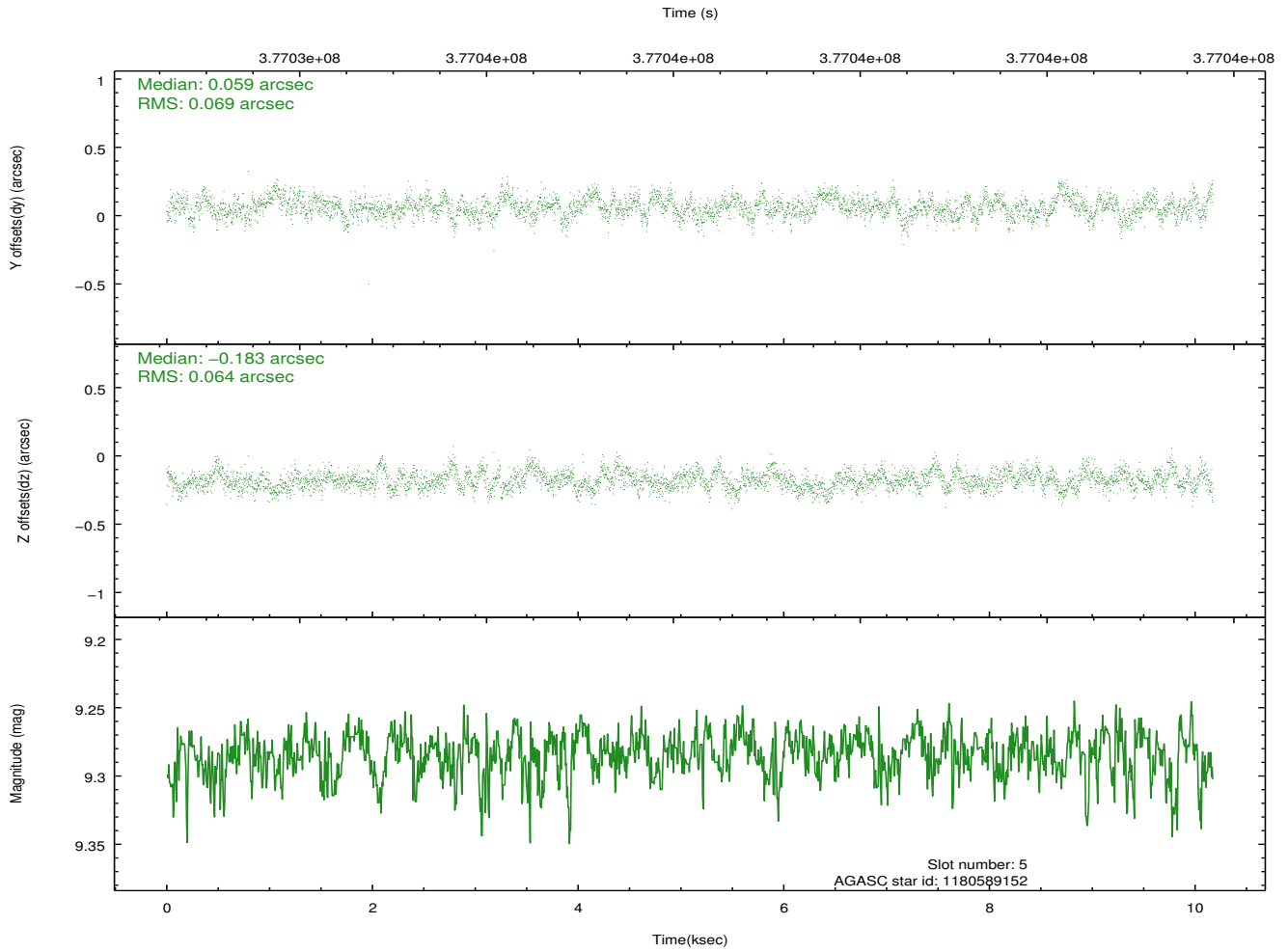
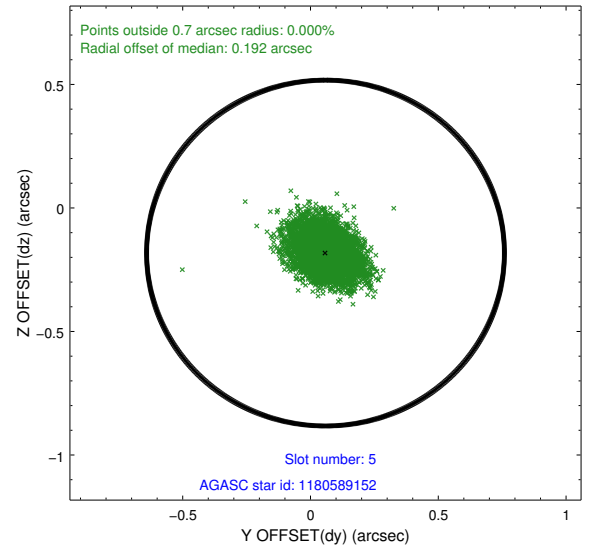
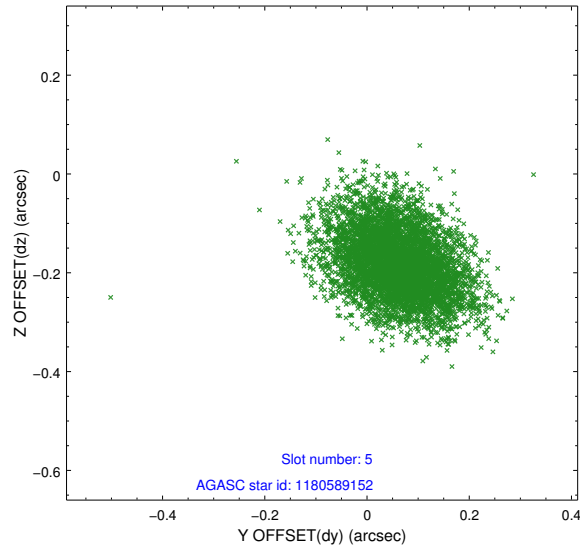
### 2.4.1 Slot 3



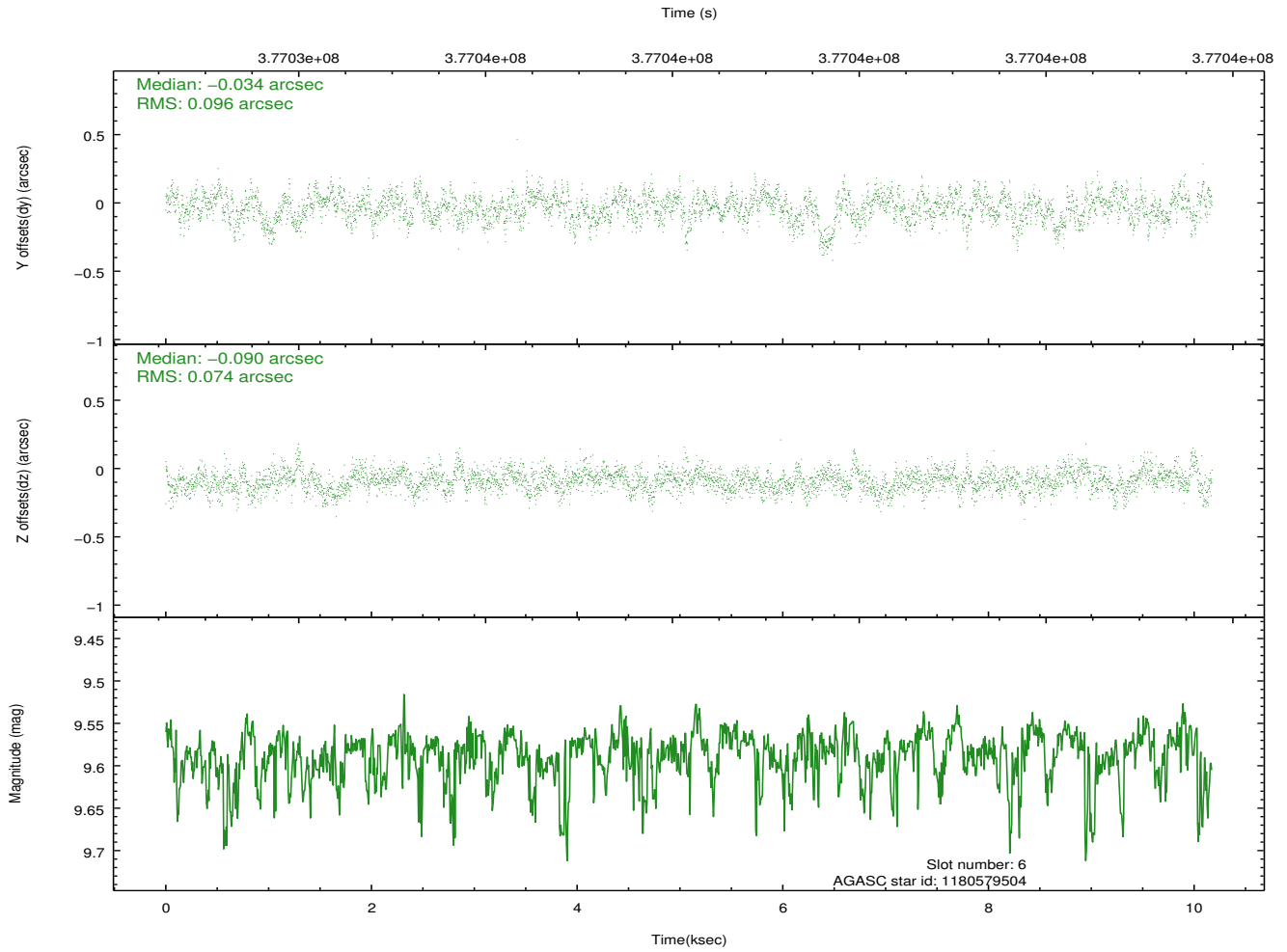
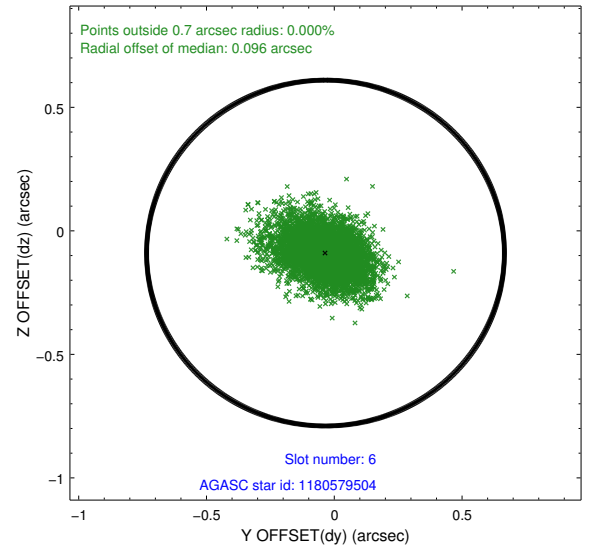
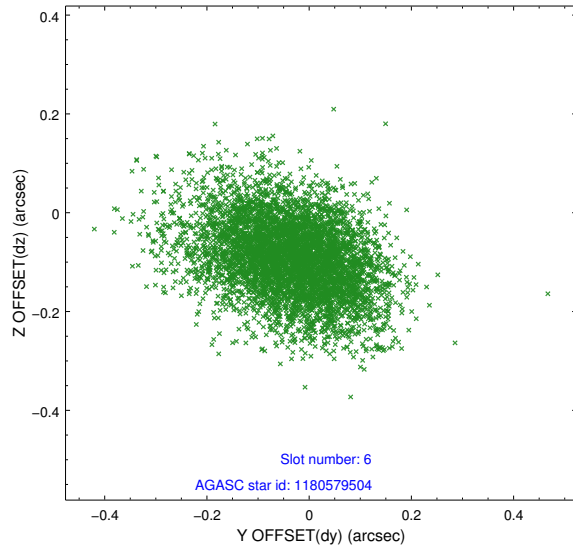
## 2.4.2 Slot 4



### 2.4.3 Slot 5

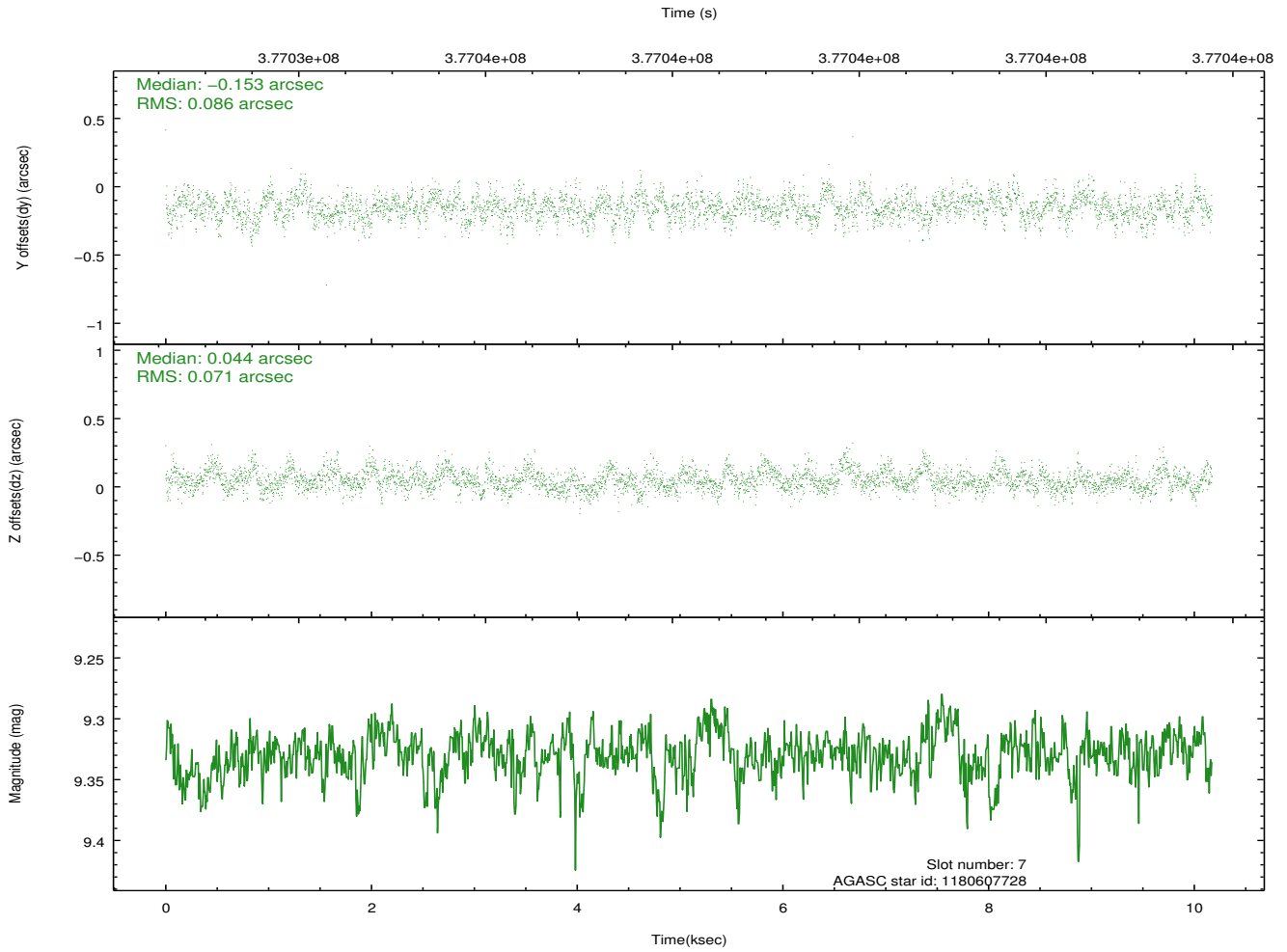
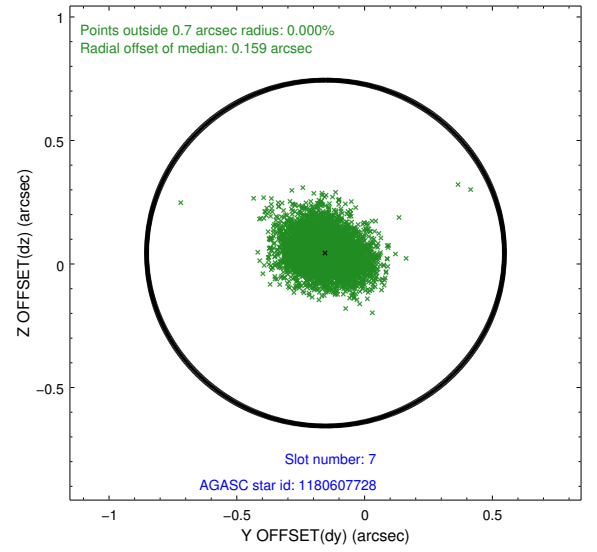
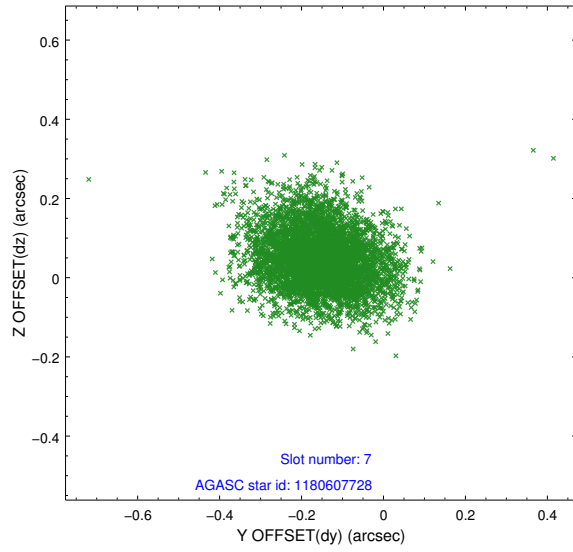


## 2.4.4 Slot 6



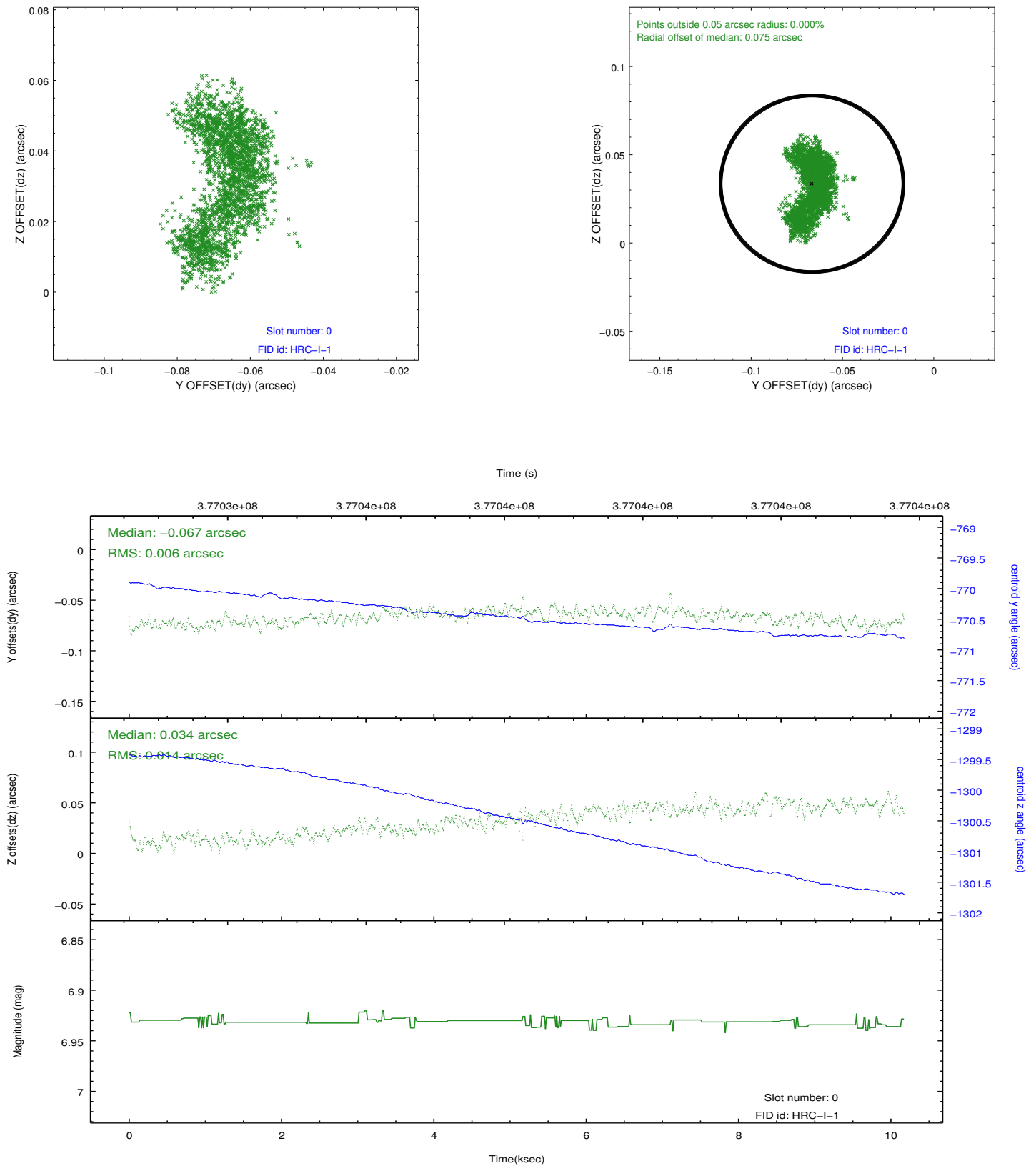


## 2.4.5 Slot 7

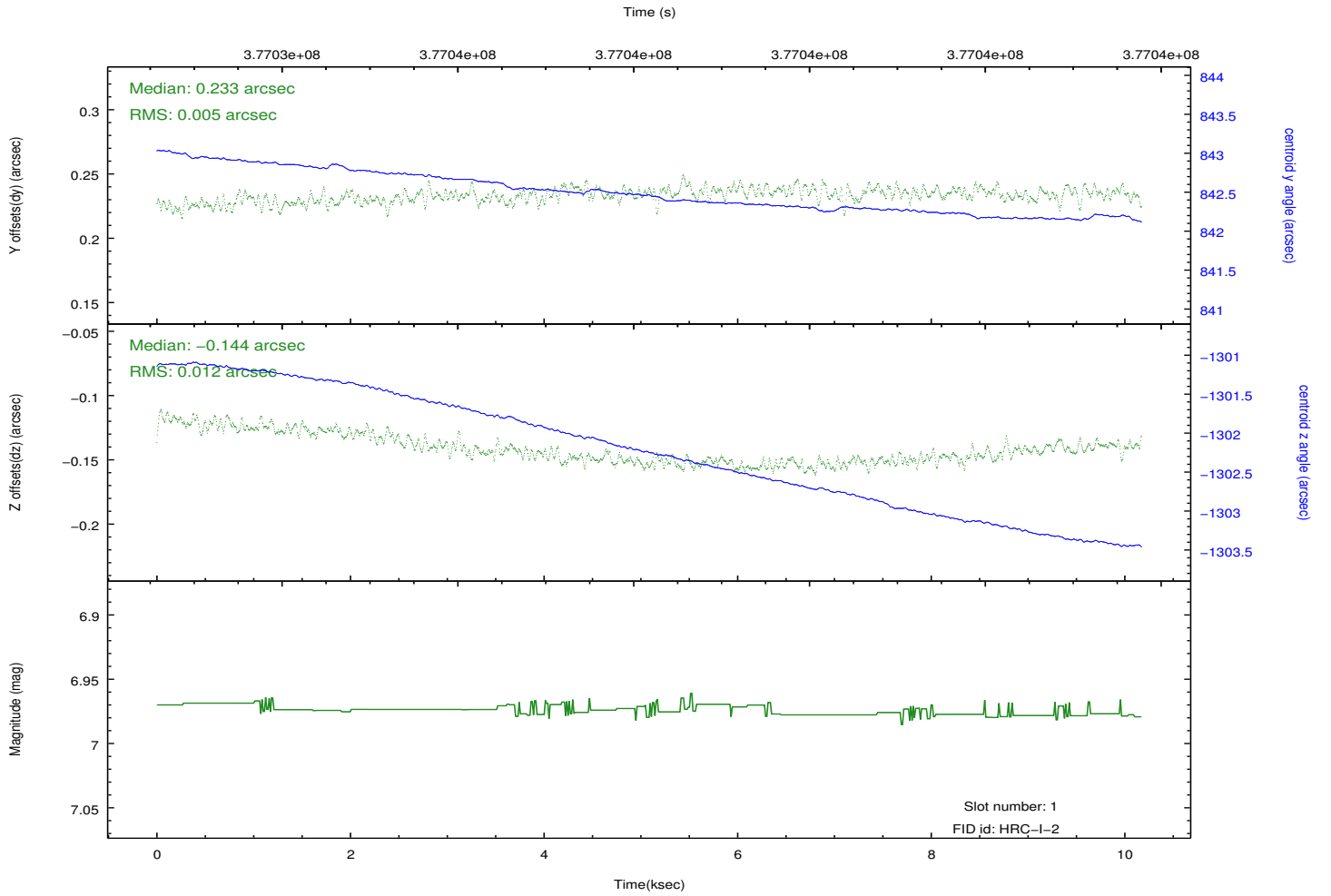
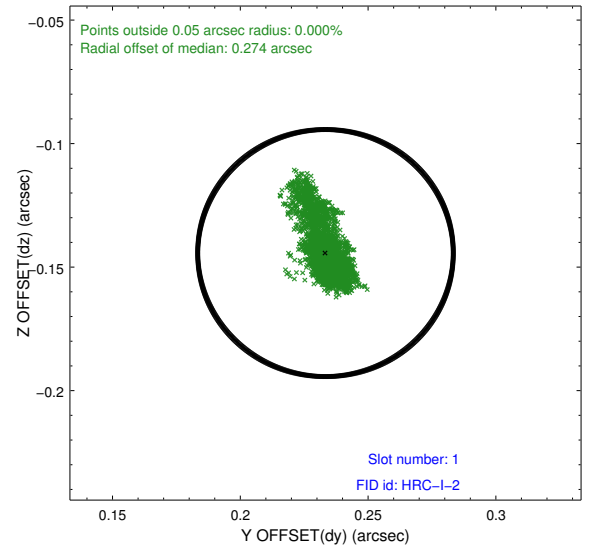
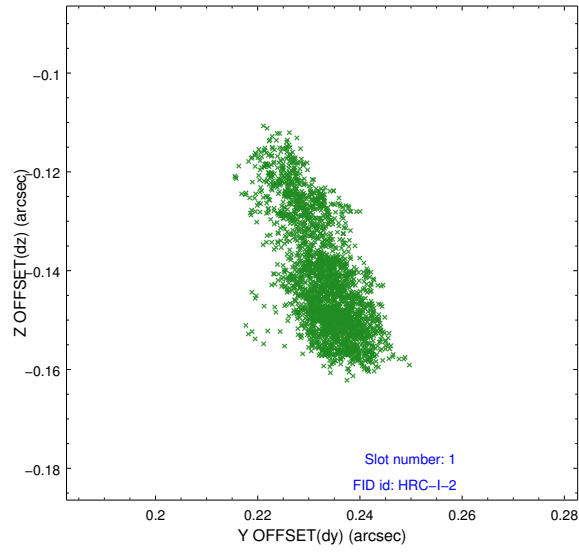


## 2.5 FID Slots

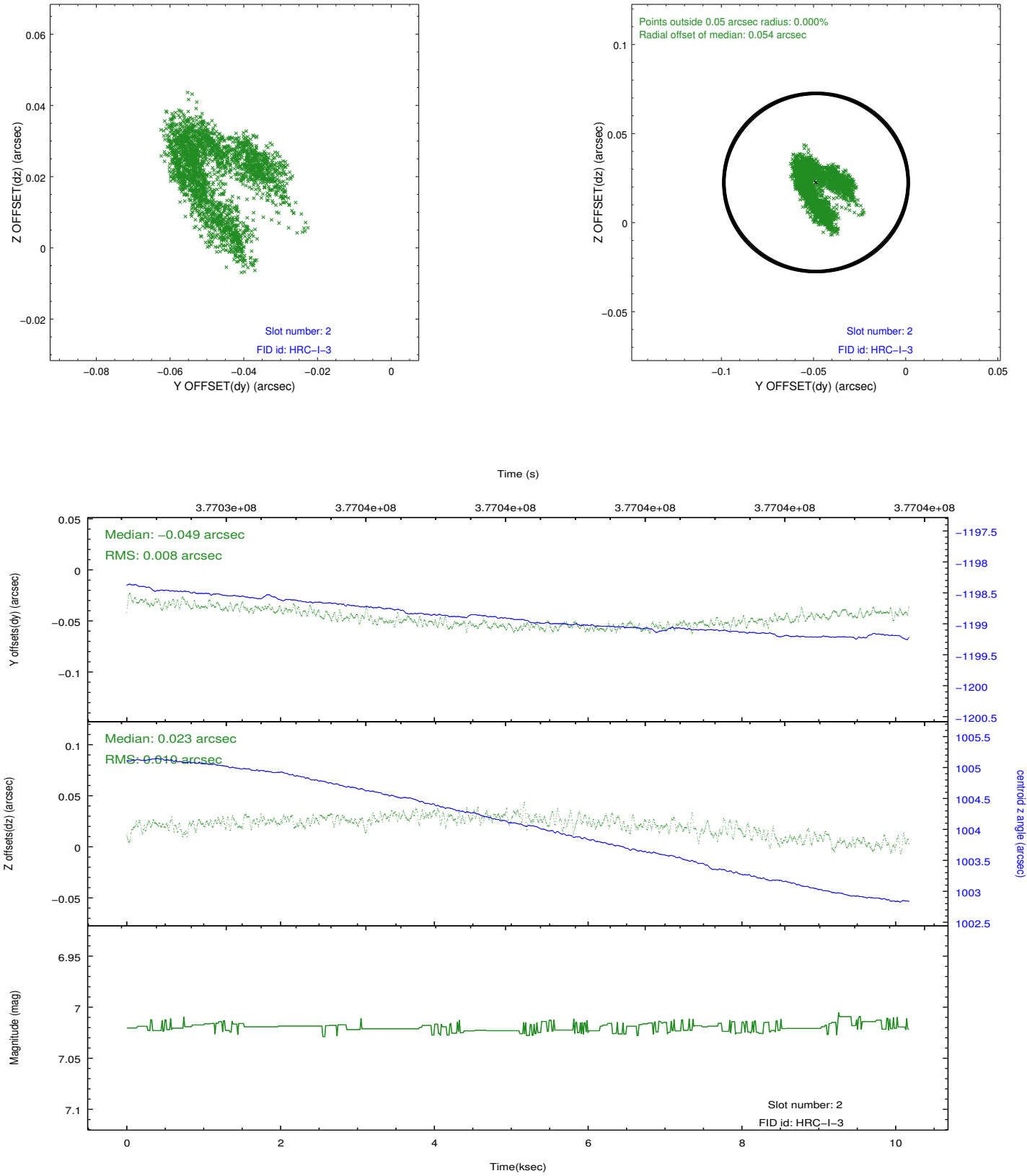
### 2.5.1 Slot 0



## 2.5.2 Slot 1



### 2.5.3 Slot 2



## A Summary

### A.1 Status

V&V Scientist	Jen Lauer
V&V Date (YYYY-MM-DD)	2012.08.22
V&V Edition	1
V&V Disposition and Status	OK
V&V Charge Time	10.173381763041

### A.2 Comments

Joint Proposal: HST. Monitor constraint met.