

V&V Reference Report

L2 ASCDS Version : 8.4.5

Observation 9949 - L2 Version 3
Chandra X-Ray Center

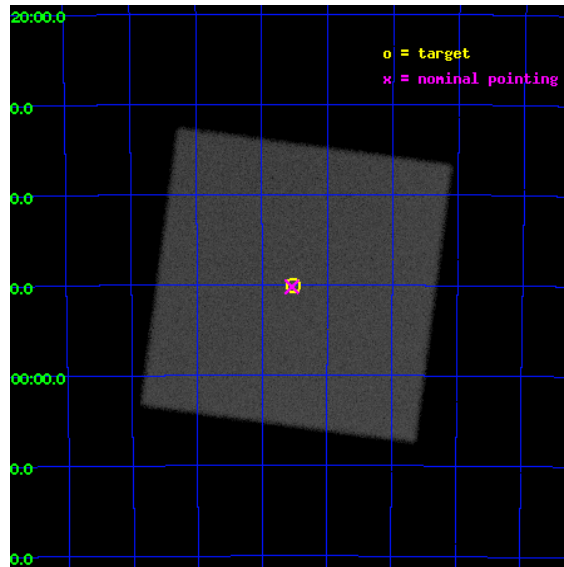
L2 Processing Date : Aug 13 2012

Contents

1	Front	2
2	OBI	3
2.1	OBI	3
2.1.1	Images	3
2.1.2	Parameters	4
2.1.3	Events	4
2.2	Compared Parameters	5
2.3	Aspect	6
2.4	Star Slots	9
2.4.1	Slot 3	9
2.4.2	Slot 4	10
2.4.3	Slot 5	11
2.4.4	Slot 6	12
2.4.5	Slot 7	13
2.5	FID Slots	14
2.5.1	Slot 0	14
2.5.2	Slot 1	15
2.5.3	Slot 2	16
A	Summary	17
A.1	Status	17
A.2	Comments	17

1 Front

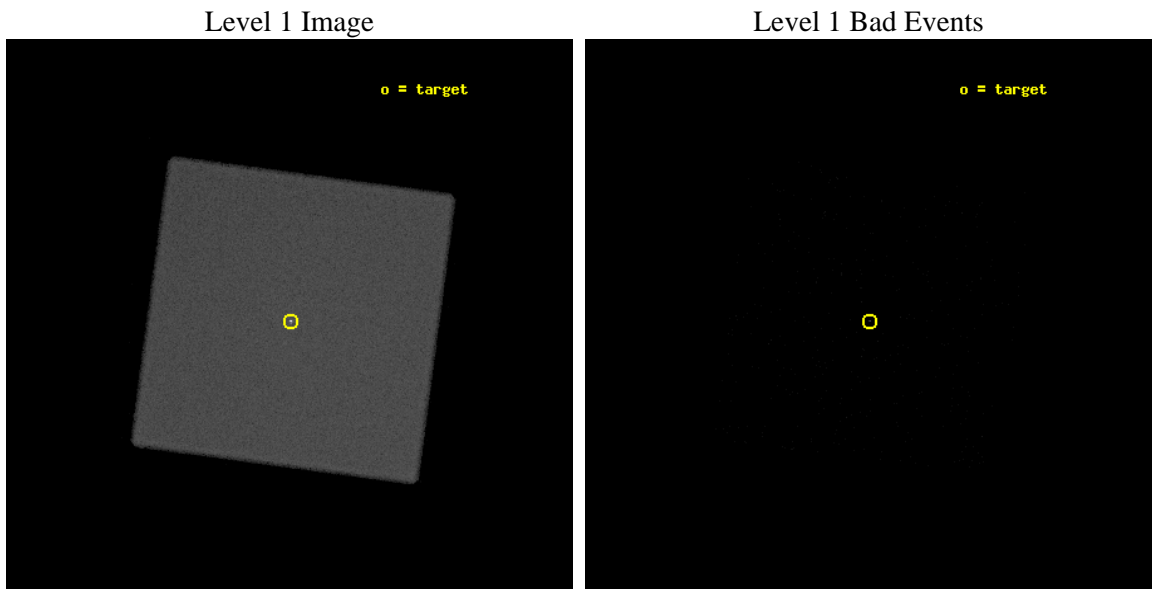
seq_num	200562	Sequence number
obs_id	9949	Observation id
title	The Cycles of Alpha Centauri	Proposal title
observer	Dr. Thomas Ayres	Principal investigator
object	Alpha Centauri	Source name
ra_targ	219.880833	Observer's specified target RA [deg]
dec_targ	-60.833611	Observer's specified target Dec [deg]
ra_nom	219.88525561714	Nominal RA [deg]
dec_nom	-60.837110220804	Nominal Dec [deg]
roll_nom	322.63181870841	Nominal Roll [deg]
revision	3	Processing version of data
ontime	10177.481756687	[s]
livetime	10056.626279228	Ontime multiplied by DTCOR
l2events	755044	Number of level 2 events



2 OBI

2.1 OBI

2.1.1 Images



2.1.2 Parameters

obi_num	0	Obi number	sched_exp_time	10000.000000	[s] Scheduled observation exposure time
ascdsver	8.4.5	Processing system revision	ontime	10177.481756687	[s]
caldbver	4.5.1.1	 	l1events	1224091	Number of level 1 events
date	2012-08-13T07:08:10	Date and time of file creation			
revision	3	Processing version of data			

2.1.3 Events

Level 1 Events

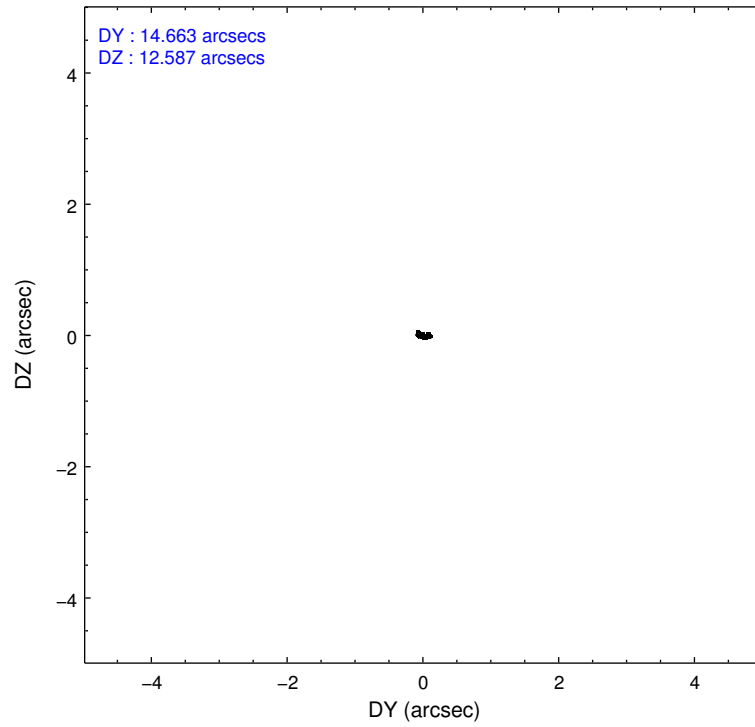
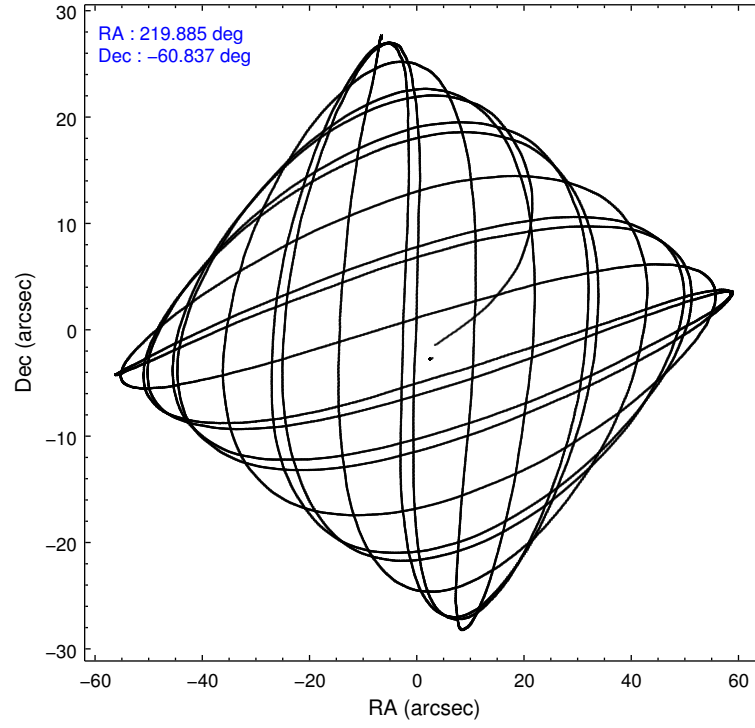
	segment 0
level 1 events	1224091
rejected events	134954
rejected %	11%

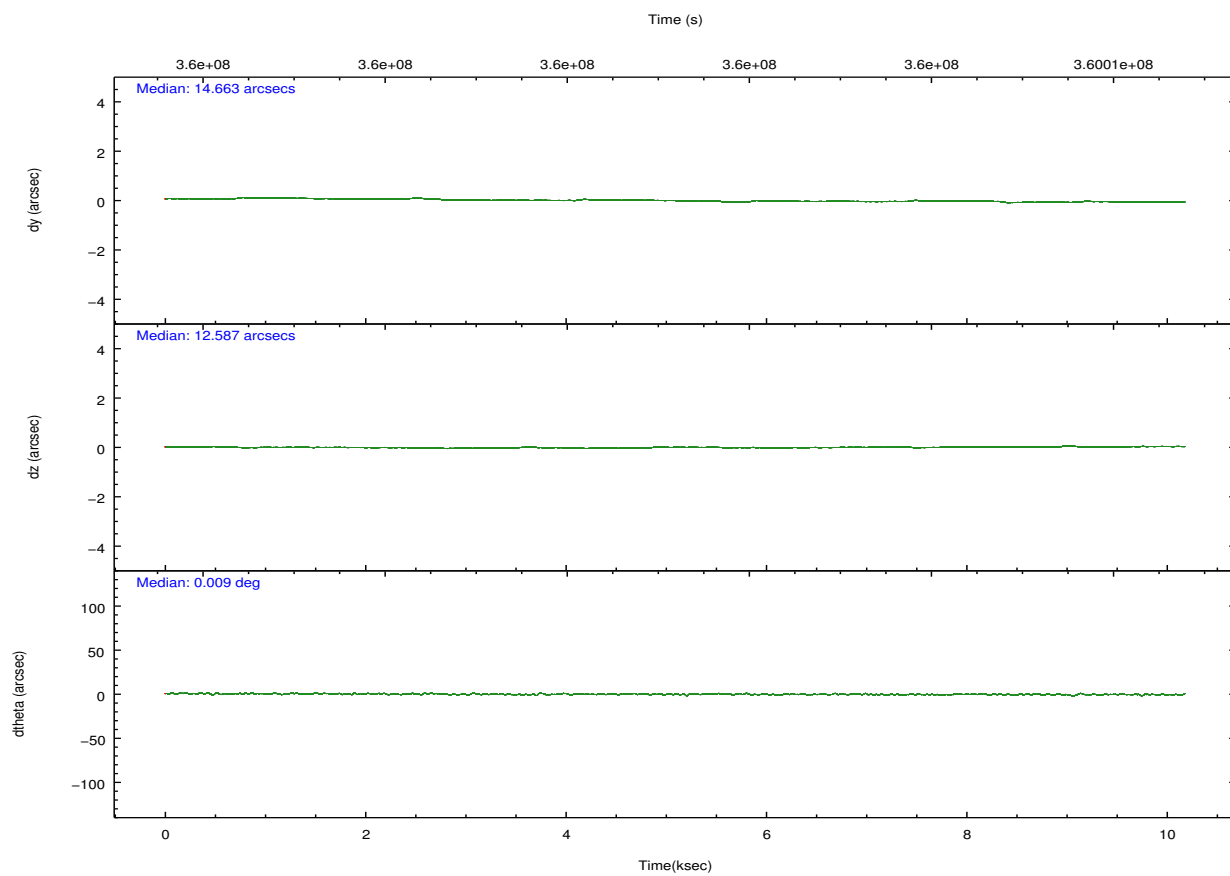
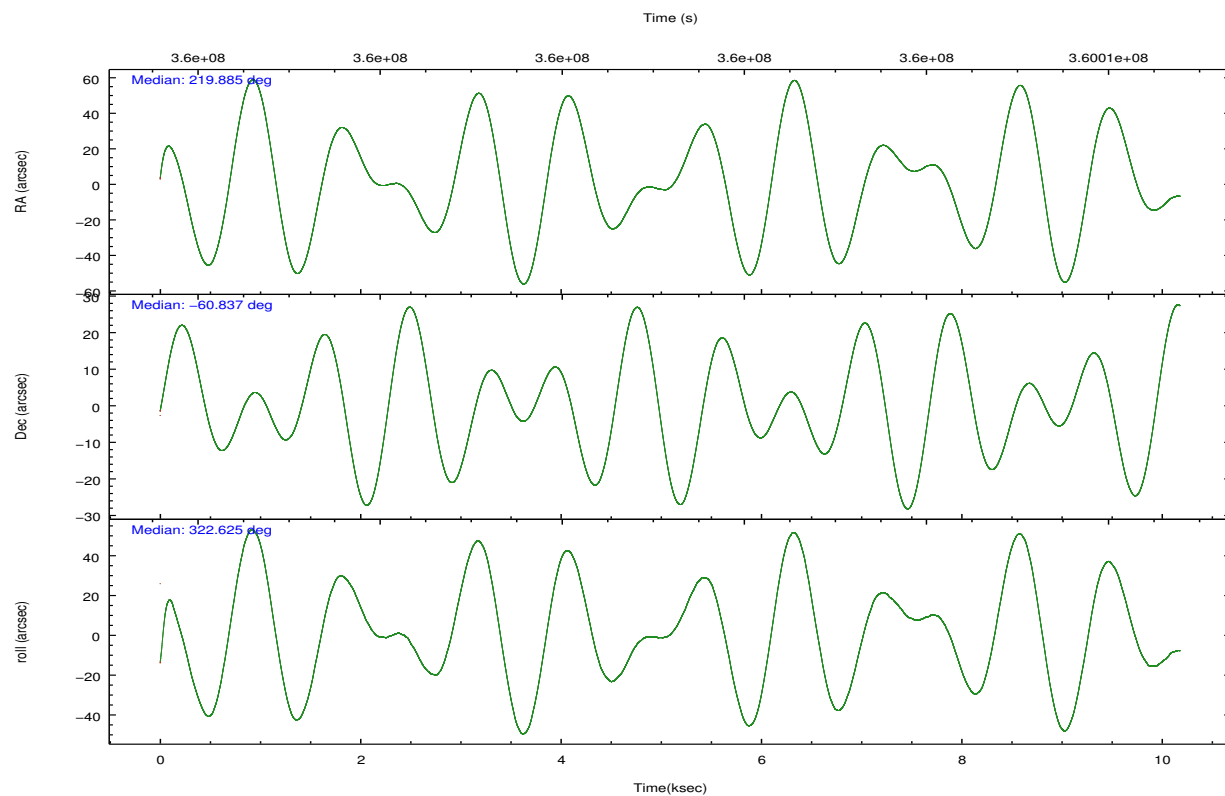
2.2 Compared Parameters

Parameter	Planned	Actual
Instrument	HRC	HRC
Detector	HRC-I	HRC-I
Grating	NONE	NONE
Data mode	OBSERVING	OBSERVING
Observation mode	POINTING	POINTING
[deg] Pointing RA	219.829790	219.8852556171391
[deg] Pointing Dec	-60.834349	-60.83711022080364
[deg] Pointing Roll	322.678895	322.6318187084104
[mm] SIM focus pos	-1.040293	-1.038866356238299
[mm] SIM defocus	0	0.001426264420575141
[mm] SIM translation stage pos	126.985494	126.9829799899862
[mm] SIM translation stage offset	0	0.002508901615314585
[s] Observation start time (MET)	359996272.184000	359994863.59791
Observation start date	2009-05-29T14:56:46	2009-05-29T14:34:23
[s] Observation end time (MET)	360006272.184000	360007489.54854
Observation end date	2009-05-29T17:43:26	2009-05-29T18:04:49

Parameter	Planned	Actual
Obspar format version number	7	7
Obspar file type	PREDICTED	ACTUAL
Obspar update status	NONE	UPDATED

2.3 Aspect



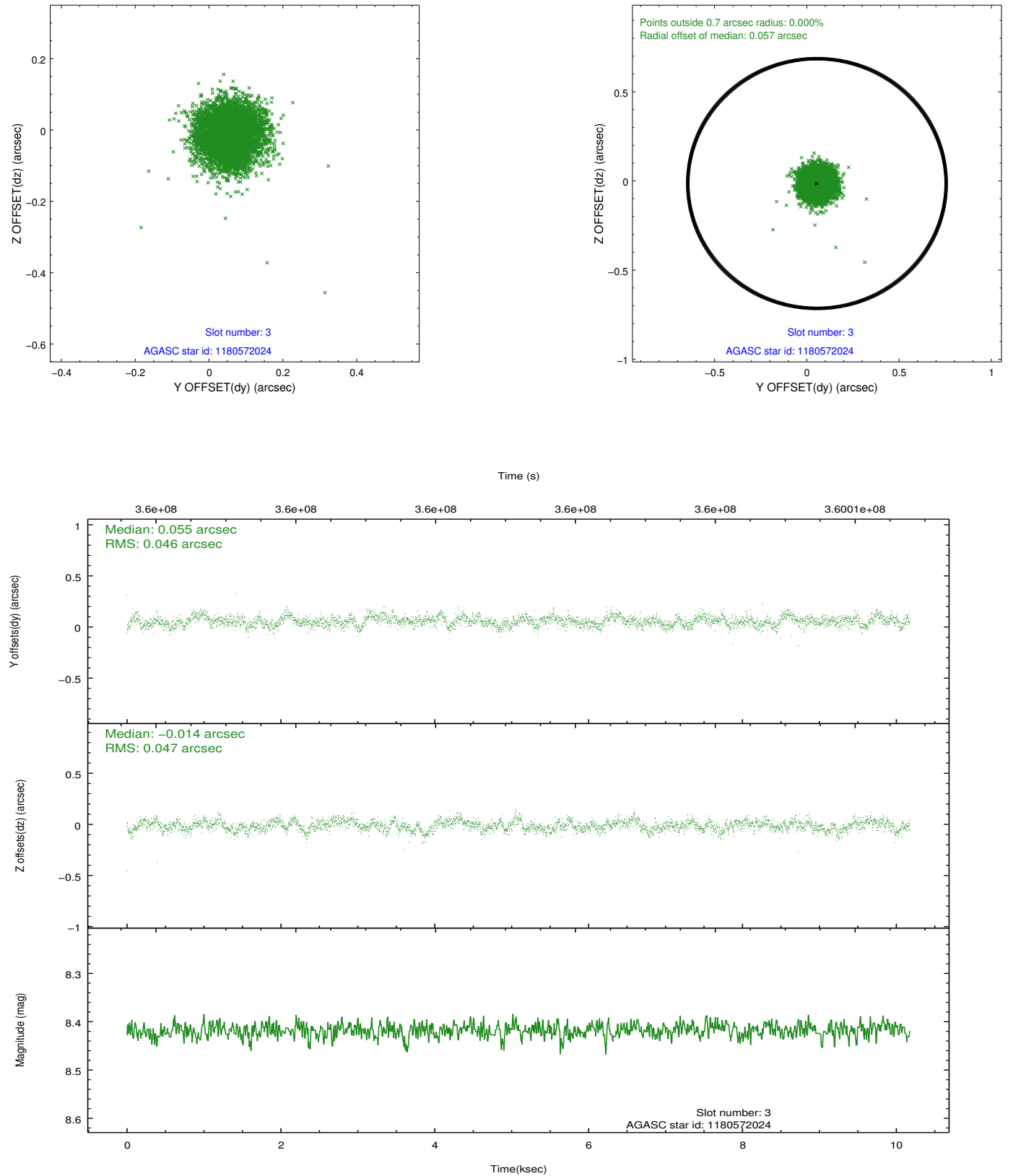


Slot Statistics

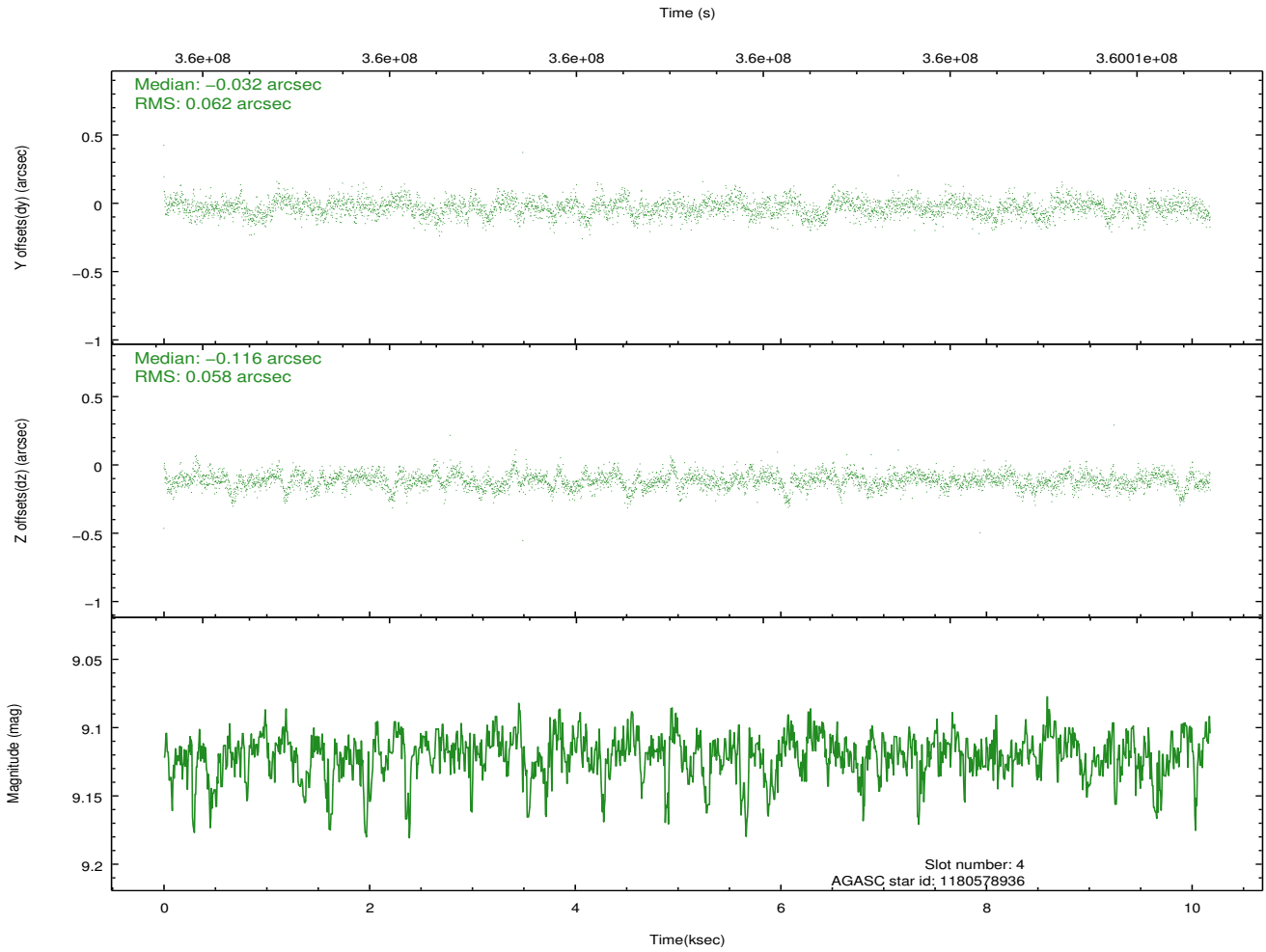
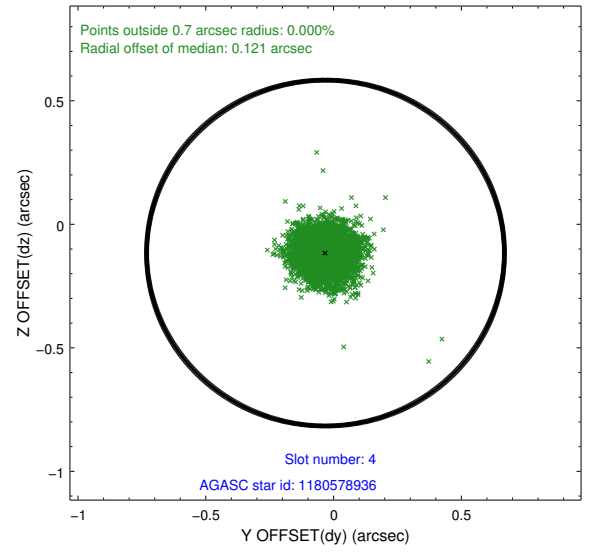
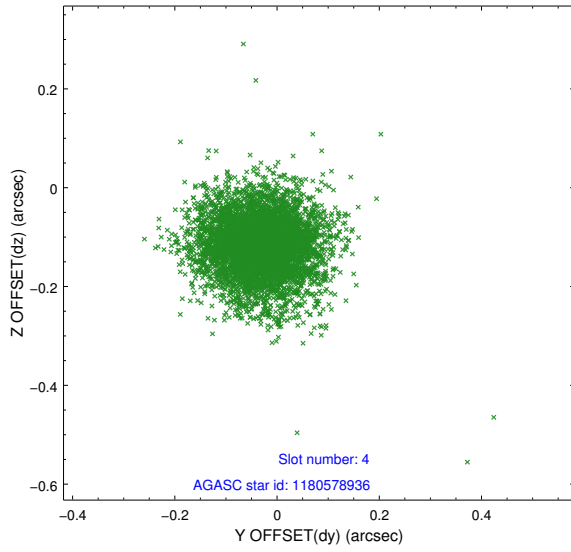
slot	status	id	mag	n_pts	med_dy	med_dz	dr1	dr2	ra	dec	mean_y	mean_z
0	FID	HRC-I-1	7.00	2483	-0.068	0.018	0.008	0.032	0.000000	0.000000	-770.54	-1300.58
1	FID	HRC-I-2	7.04	2483	0.255	-0.163	0.007	0.016	0.000000	0.000000	842.10	-1302.86
2	FID	HRC-I-3	7.09	2483	-0.068	0.055	0.007	0.020	0.000000	0.000000	-1198.67	1003.51
3	GUIDE	1180572024	8.42	4957	0.055	-0.014	0.070	0.111	220.930377	-60.981487	1859.85	731.13
4	GUIDE	1180578936	9.12	4959	-0.032	-0.116	0.088	0.147	220.919358	-61.155393	2215.93	215.66
5	GUIDE	1180589152	9.28	4955	-0.023	0.219	0.094	0.155	219.760705	-61.382926	1103.85	-1642.67
6	GUIDE	1180612104	8.98	4956	-0.121	0.053	0.091	0.149	220.502279	-60.631704	506.09	1294.68
7	GUIDE	1180607728	9.33	4962	0.124	-0.139	0.111	0.184	219.907127	-60.060122	-1578.84	2300.46

2.4 Star Slots

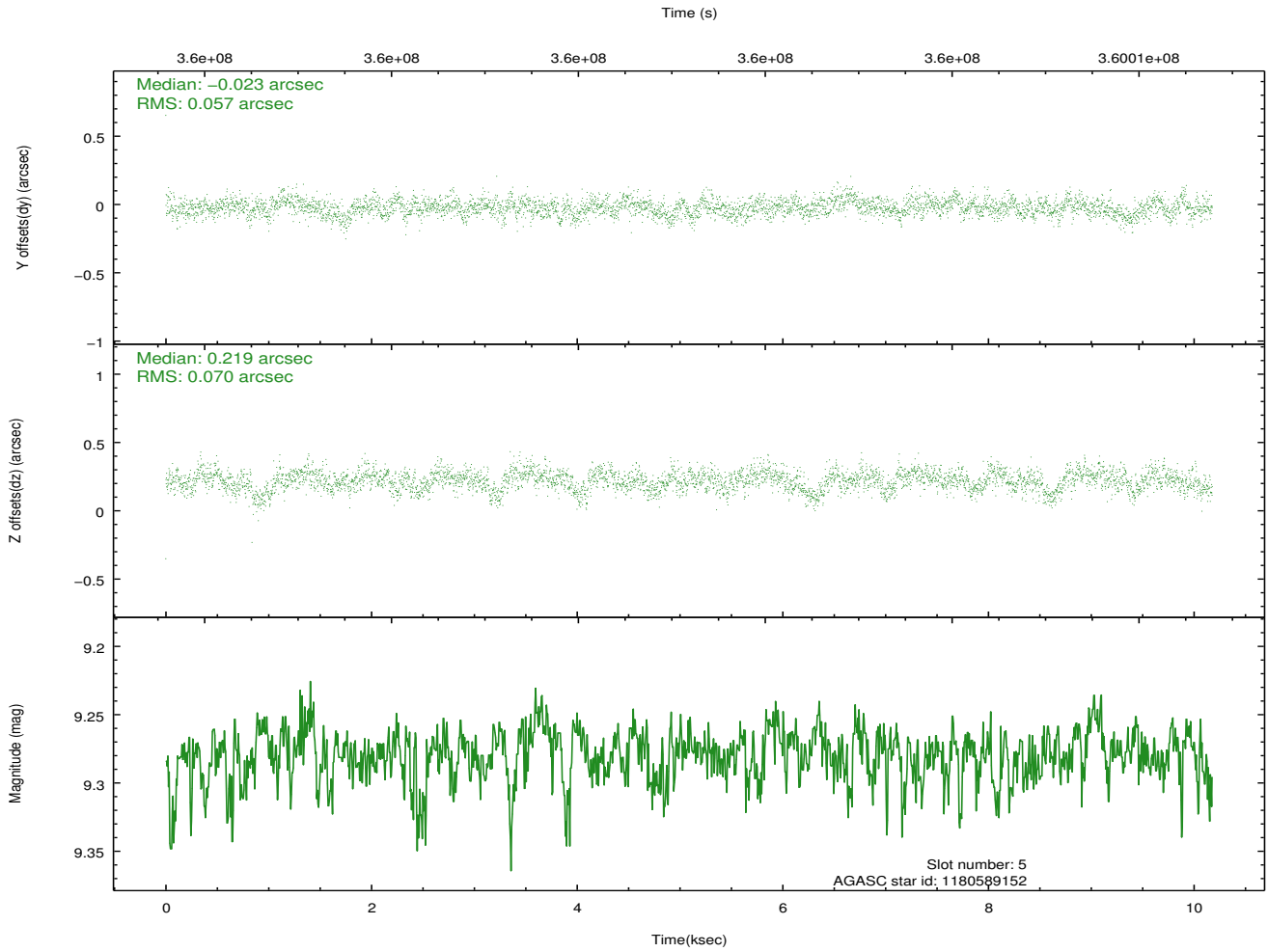
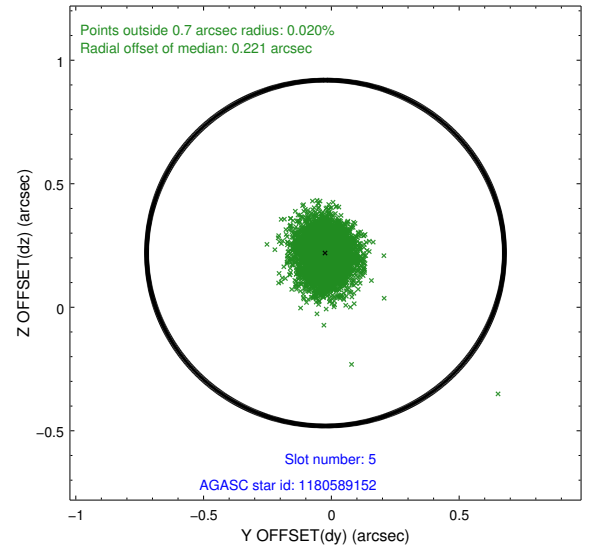
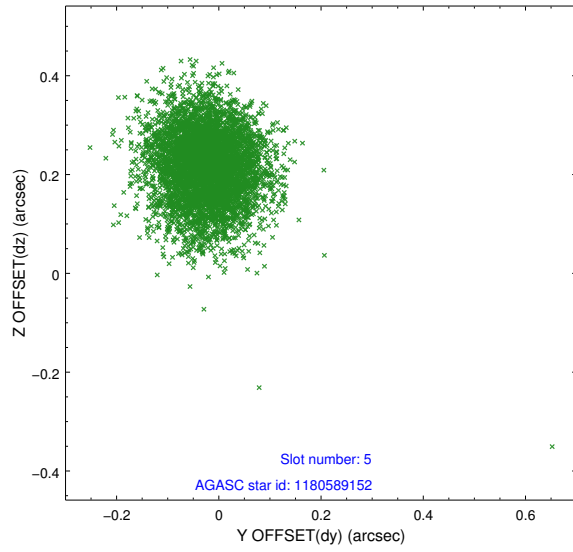
2.4.1 Slot 3



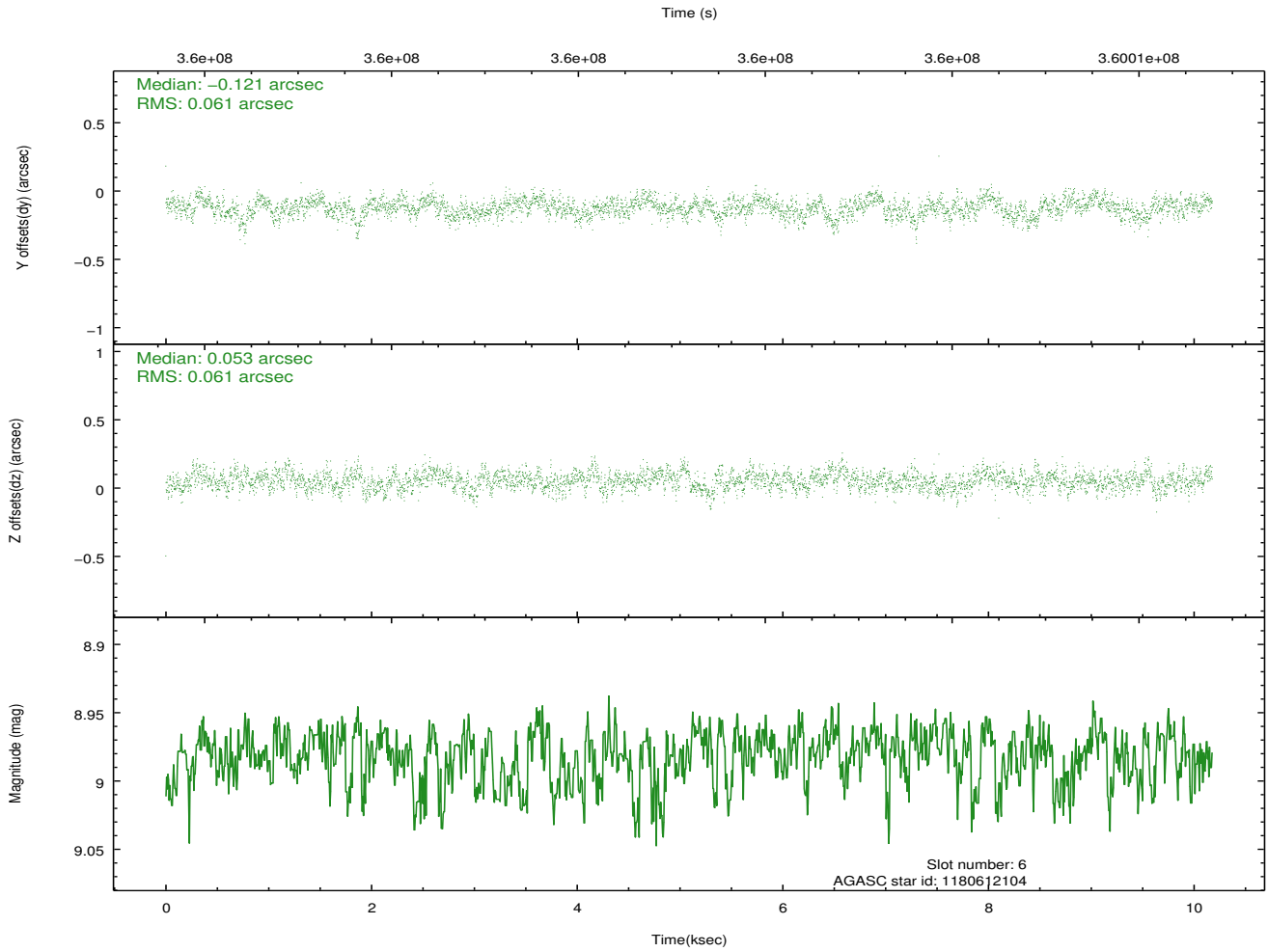
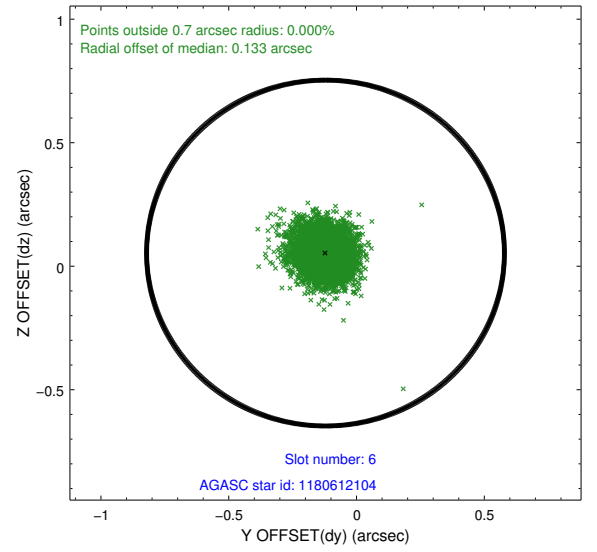
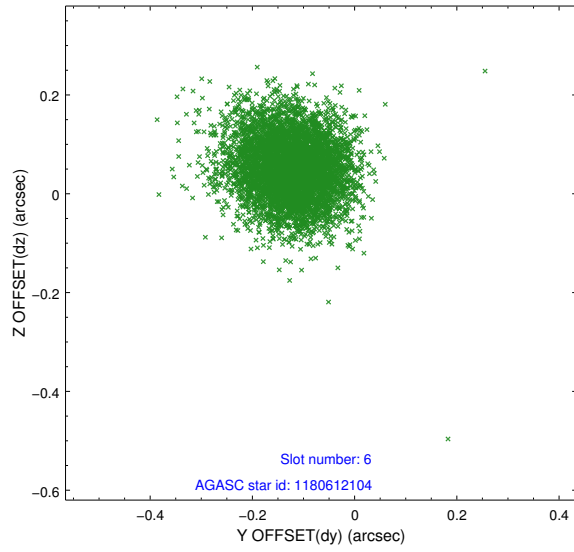
2.4.2 Slot 4



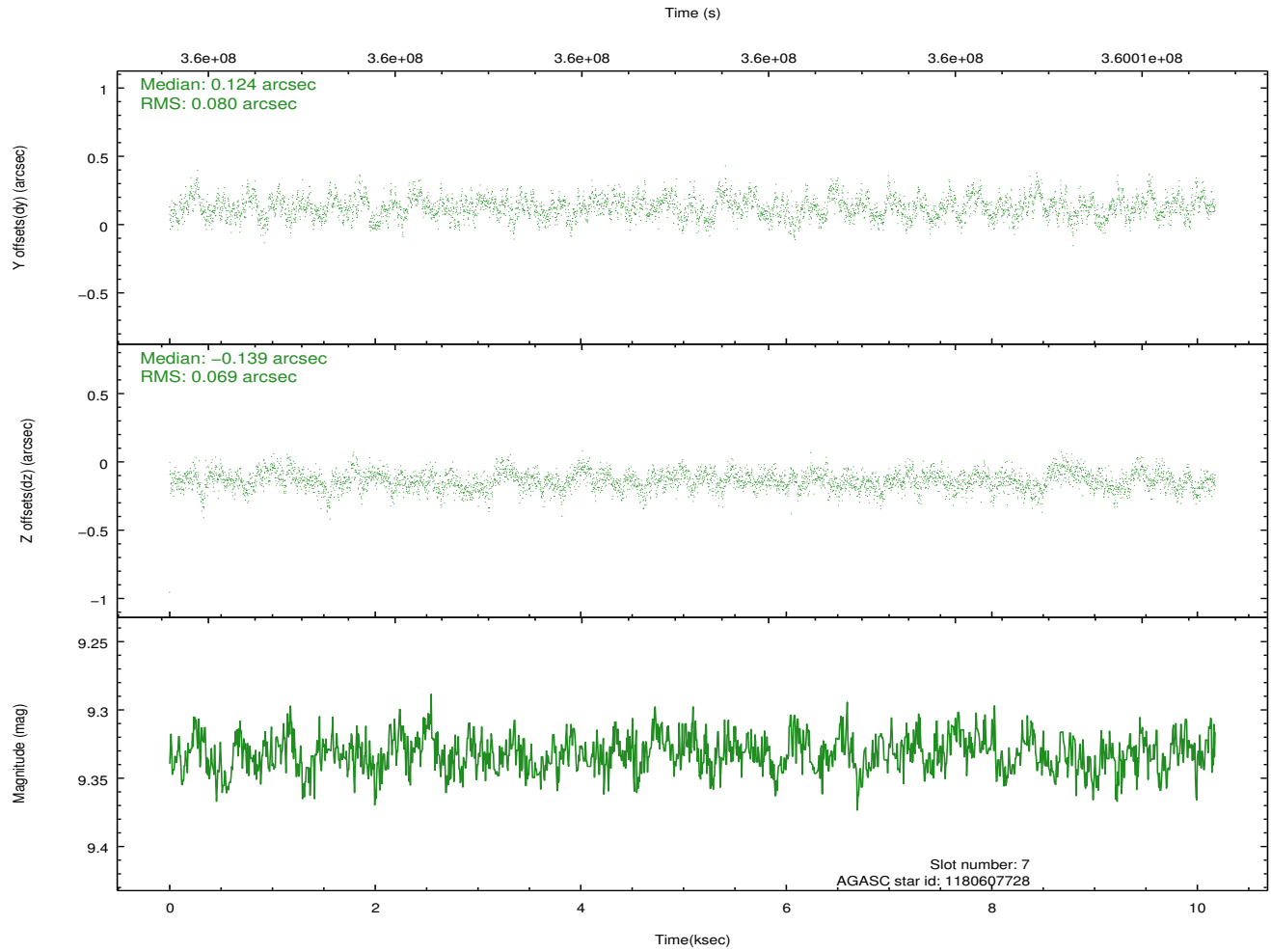
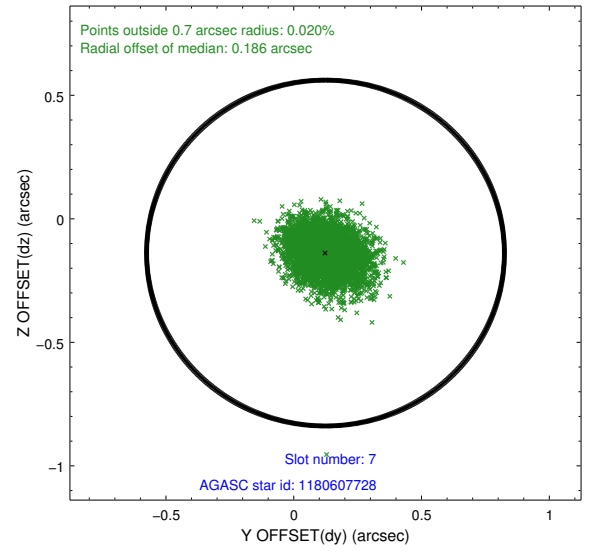
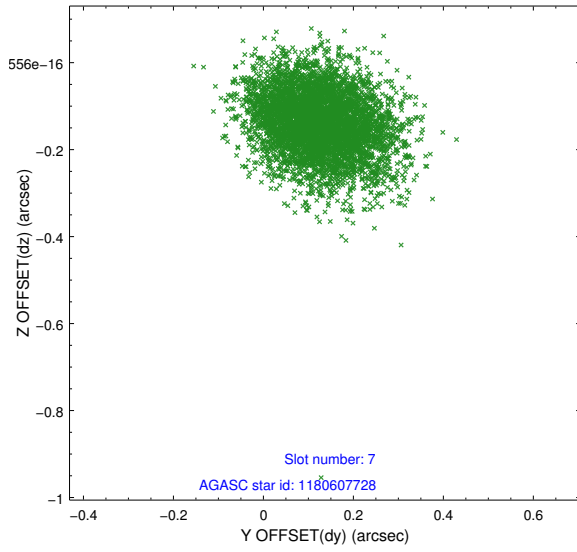
2.4.3 Slot 5



2.4.4 Slot 6

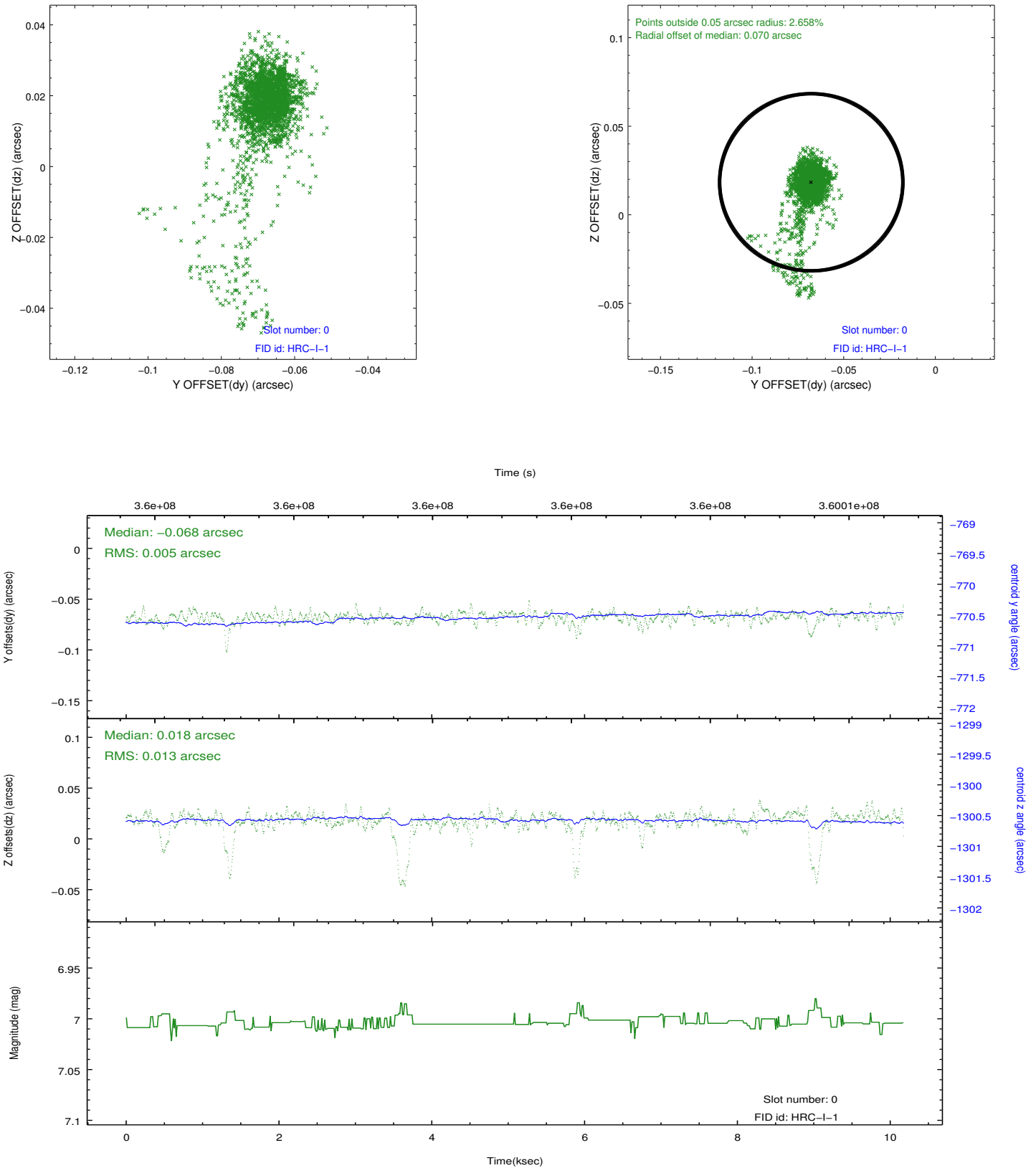


2.4.5 Slot 7

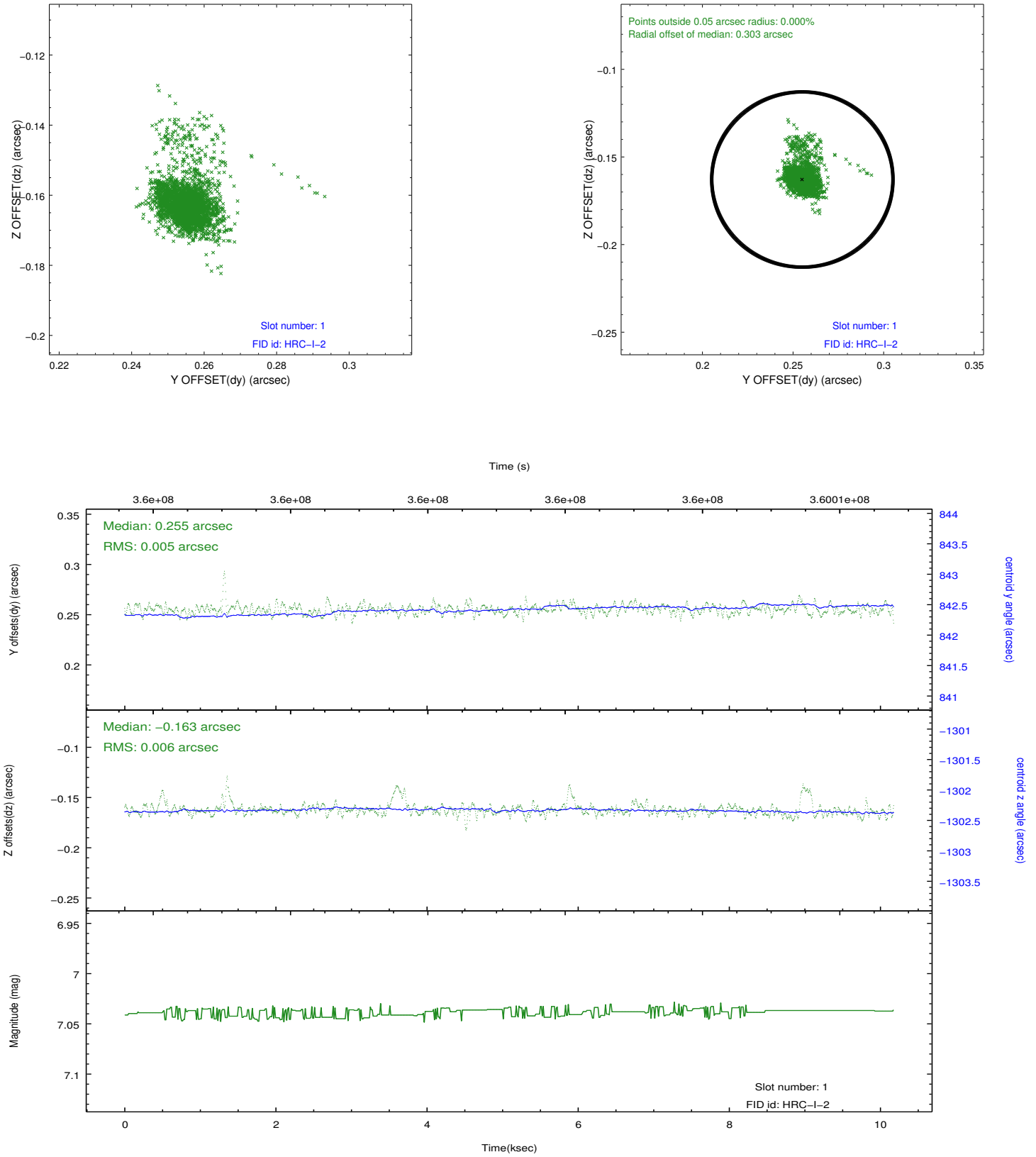


2.5 FID Slots

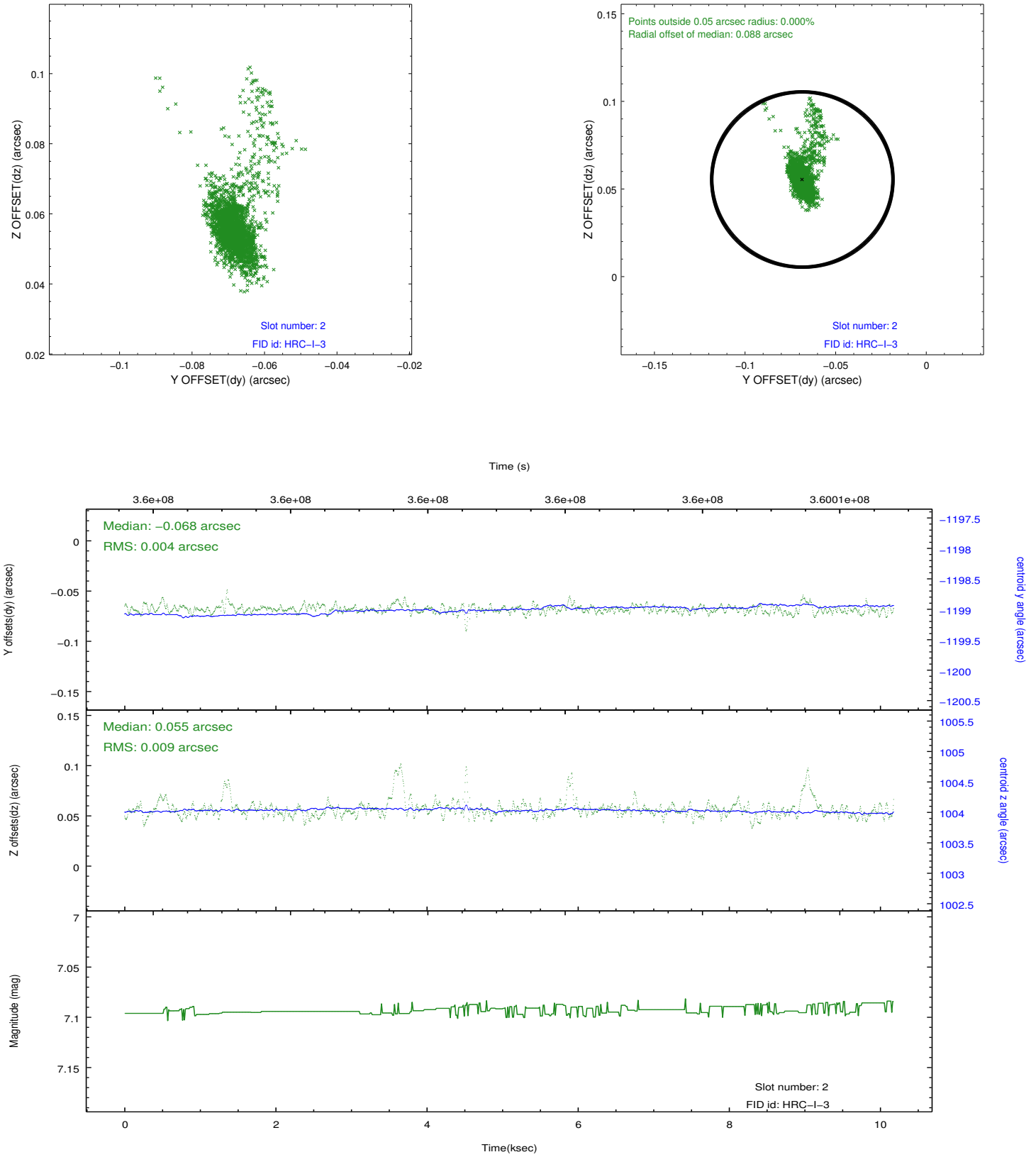
2.5.1 Slot 0



2.5.2 Slot 1



2.5.3 Slot 2



A Summary

A.1 Status

V&V Scientist	Jen Lauer
V&V Date (YYYY-MM-DD)	2012.08.20
V&V Edition	1
V&V Disposition and Status	OK
V&V Charge Time	10.1774817

A.2 Comments

Joint proposal with HST. Preferred time constraint met.