

V&V Reference Report

L2 ASCDS Version : 8.4.4

Observation 9857 - L2 Version 2
Chandra X-Ray Center

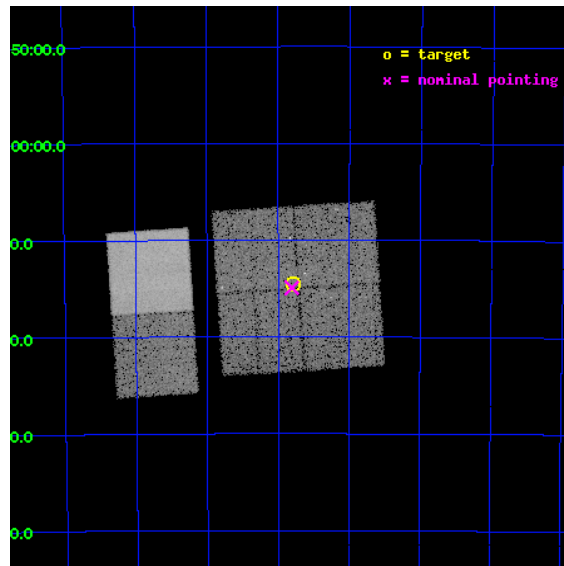
L2 Processing Date : May 15 2012

Contents

1	Front	2
2	OBI	3
2.1	OBI	3
2.1.1	Images	3
2.1.2	Bias	3
2.1.3	Parameters	4
2.1.4	Events	4
2.2	Compared Parameters	5
2.3	Aspect	6
2.4	Star Slots	9
2.4.1	Slot 3	9
2.4.2	Slot 4	10
2.4.3	Slot 5	11
2.4.4	Slot 6	12
2.4.5	Slot 7	13
2.5	FID Slots	14
2.5.1	Slot 0	14
2.5.2	Slot 1	15
2.5.3	Slot 2	16
A	Summary	17
A.1	Status	17
A.2	Comments	17

1 Front

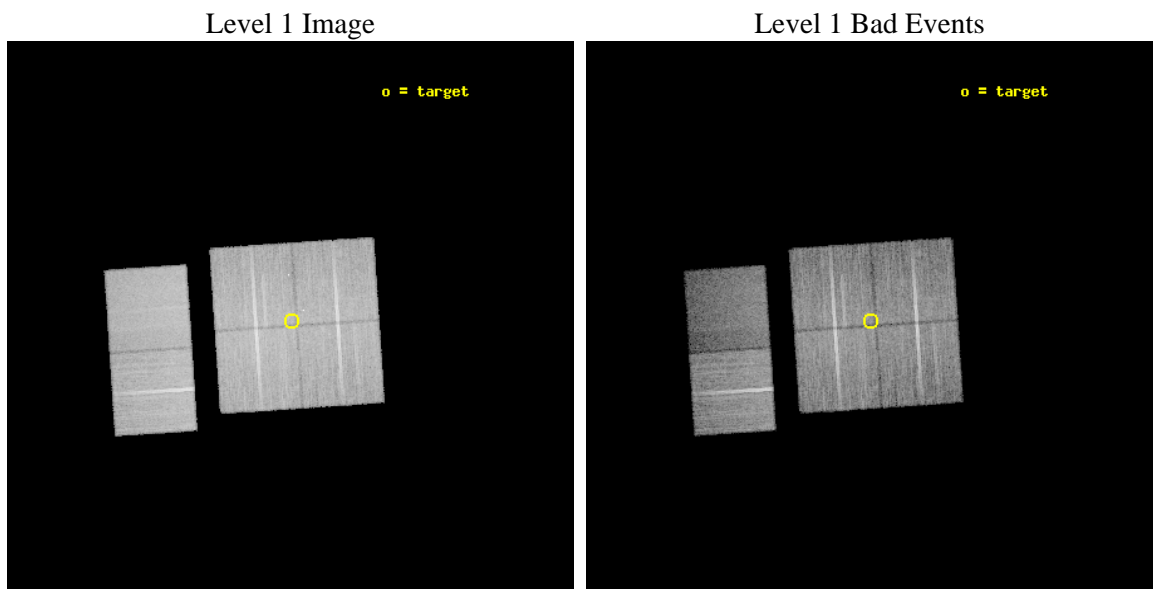
seq_num	900840	Sequence number
obs_id	9857	Observation id
title	The Great Nebula in Carina: Protoplanetary Disks to Starburst Galaxies	Proposal title
observer	Dr. Leisa Townsley	Principal investigator
object	Carina South Pillars Ptg 3	Source name
dtcycle	0	
cycle	P	events from which exps? Prim/Second/Both
ra_targ	162.197917	Observer's specified target RA [deg]
dec_targ	-60.241028	Observer's specified target Dec [deg]
ra_nom	162.20177509754	Nominal RA [deg]
dec_nom	-60.248886099319	Nominal Dec [deg]
roll_nom	266.21203286111	Nominal Roll [deg]
revision	2	Processing version of data
ontime	20067.158944905	Sum of GTIs [s]
livetime	19813.056495352	Livetime [s]
ontime0	20067.158954918	Sum of GTIs [s]
ontime1	20063.91804415	Sum of GTIs [s]
ontime2	20067.15893501	Sum of GTIs [s]
ontime3	20067.158944905	Sum of GTIs [s]
ontime6	20063.917994559	Sum of GTIs [s]
ontime7	20070.399925292	Sum of GTIs [s]
l2events	131224	Number of level 2 events



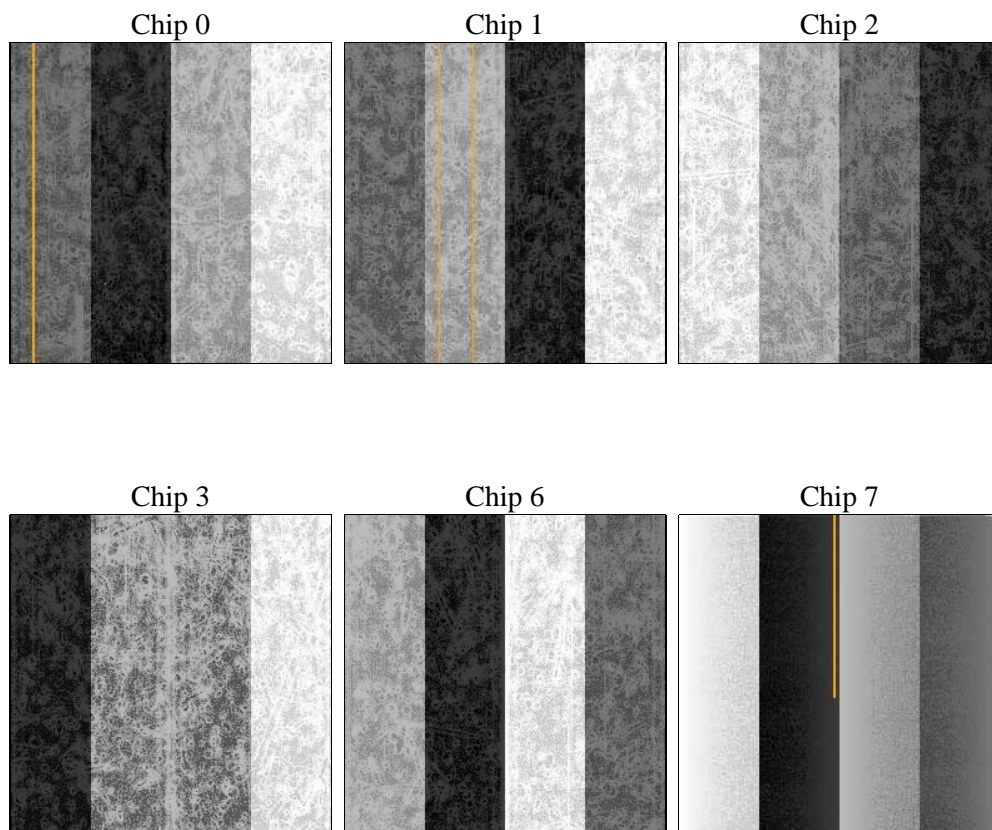
2 OBI

2.1 OBI

2.1.1 Images



2.1.2 Bias



2.1.3 Parameters

obi_num	1	Obi number	sched_exp_time	19924.088000	[s] Scheduled observation exposure time
ascdsver	8.4.4	Processing system revision	ontime	20067.158944905	Sum of GTIs [s]
caldsver	4.4.9	 	ontime0	20067.158954918	Sum of GTIs [s]
date	2012-05-15T15:29:34	Date and time of file creation	ontime1	20063.91804415	Sum of GTIs [s]
revision	2	Processing version of data	ontime2	20067.15893501	Sum of GTIs [s]
			ontime3	20067.158944905	Sum of GTIs [s]
			ontime6	20063.917994559	Sum of GTIs [s]
			ontime7	20070.399925292	Sum of GTIs [s]
			l1events	852452	Number of level 1 events

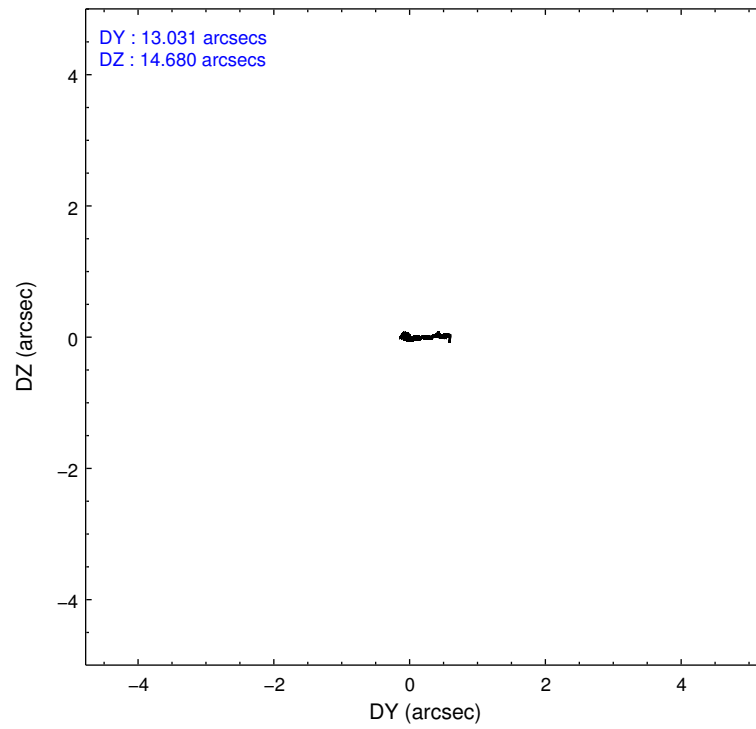
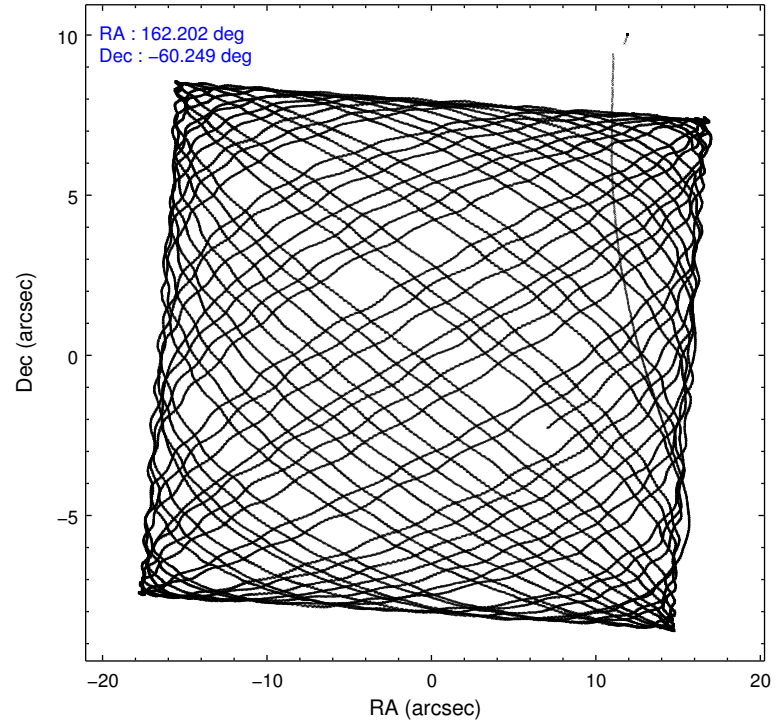
2.1.4 Events

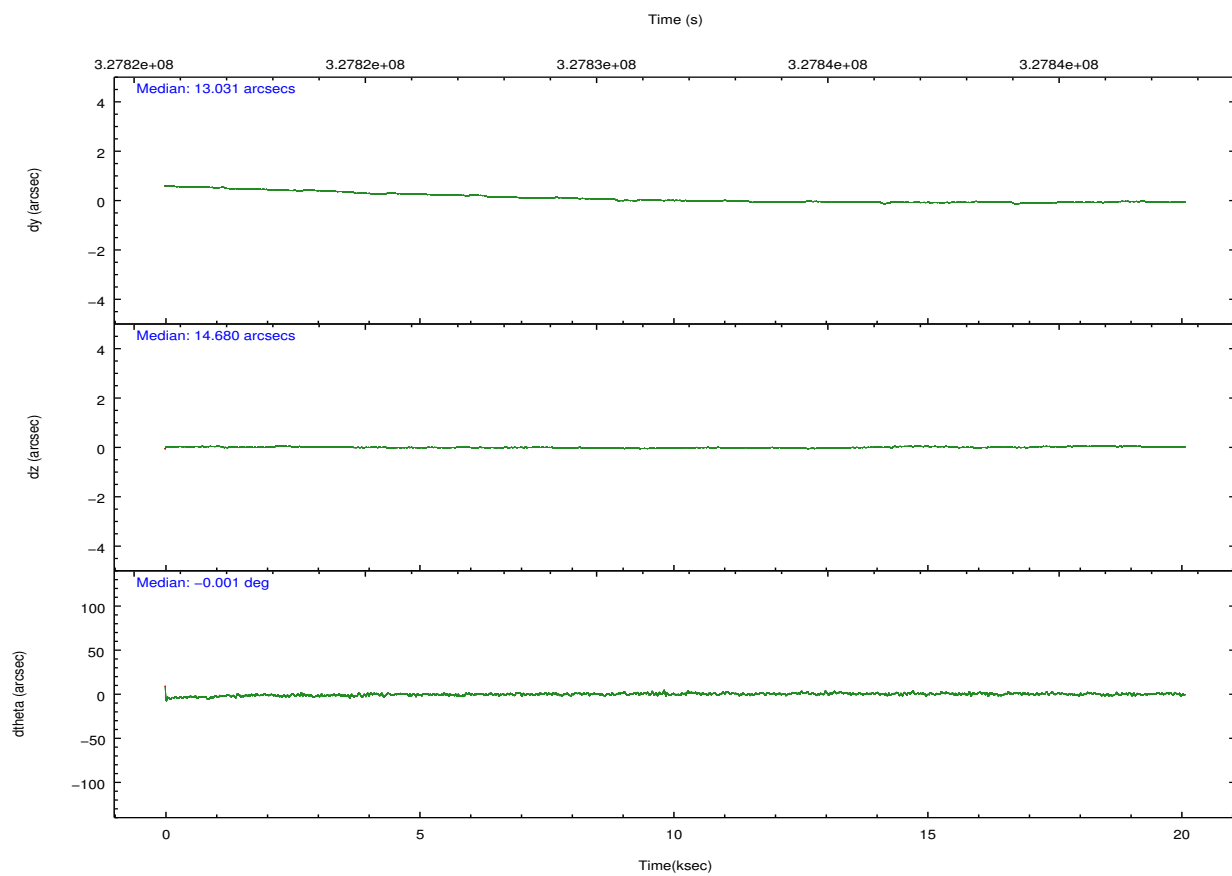
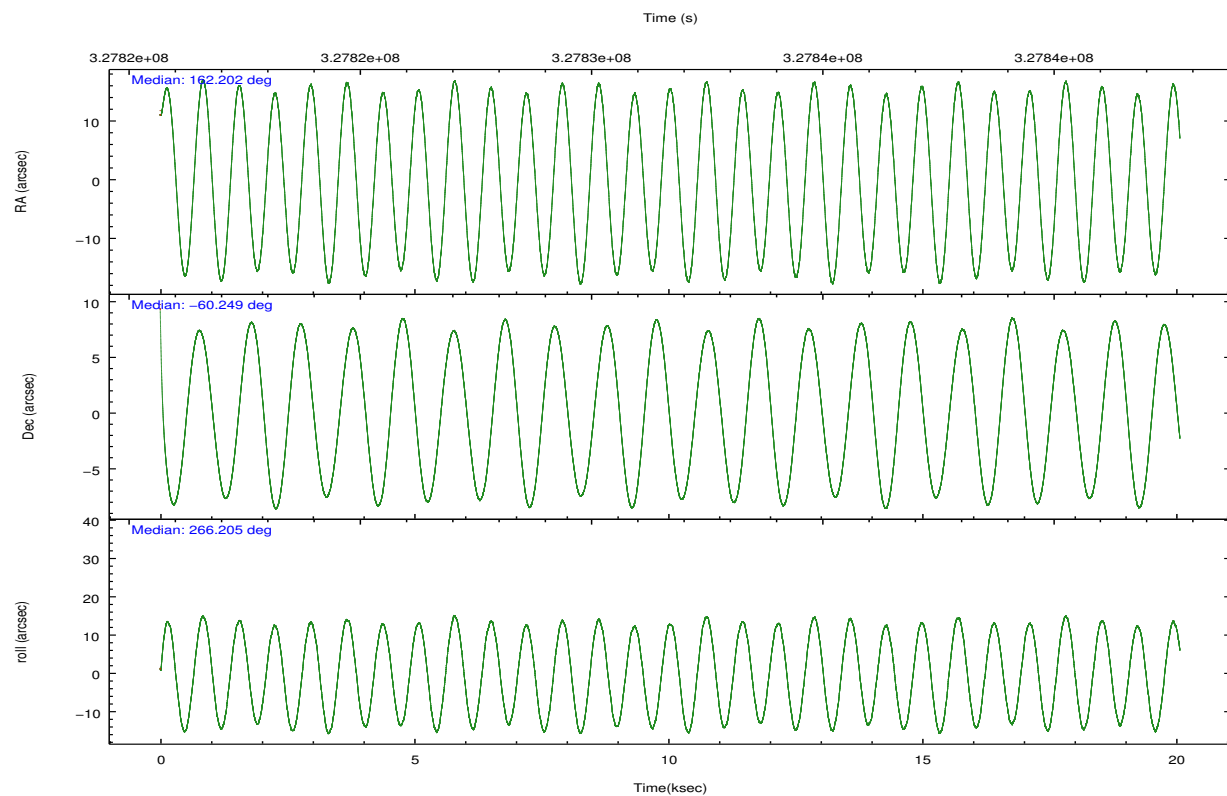
	ccd 0	ccd 1	ccd 2	ccd 3	ccd 6	ccd 7		ccd 0	ccd 1	ccd 2	ccd 3	ccd 6	ccd 7
level 1 events	133671	132914	153226	141897	148325	142419	grade 0 events	5428	6300	5685	6239	5919	7369
rejected events	119193	116625	138772	126895	132709	71765		4%	4%	3%	4%	3%	5%
rejected %	89%	87%	90%	89%	89%	50%	grade 1 events	81	85	77	100	72	212
								0%	0%	0%	0%	0%	0%
							grade 2 events	3376	3398	3439	3101	3525	15125
								2%	2%	2%	2%	2%	10%
							grade 3 events	1534	1805	1530	1589	1593	6653
								1%	1%	0%	1%	1%	4%
							grade 4 events	1581	1751	1449	1543	1561	6629
								1%	1%	0%	1%	1%	4%
							grade 5 events	4312	4759	4128	5133	5181	15227
								3%	3%	2%	3%	3%	10%
							grade 6 events	2575	3065	2375	2544	3040	34992
								1%	2%	1%	1%	2%	24%
							grade 7 events	114784	111751	134543	121648	127434	56212
								85%	84%	87%	85%	85%	39%

2.2 Compared Parameters

Parameter	Planned	Actual	Parameter	Planned	Actual
Instrument	ACIS	ACIS	Obspar format version number	7	7
Detector	ACIS-012367	ACIS-012367	Obspar file type	PREDICTED	ACTUAL
Grating	NONE	NONE	Obspar update status	NONE	UPDATED
Data mode	VFAINT	VFAINT	CCD I0 on	Y	Y
Observation mode	POINTING	POINTING	CCD I1 on	Y	Y
[deg] Pointing RA	162.177060	162.2017750975383	CCD I2 on	Y	Y
[deg] Pointing Dec	-60.224271	-60.24888609931936	CCD I3 on	Y	Y
[deg] Pointing Roll	265.981896	266.2120328611092	CCD S0 on	N	N
[mm] SIM focus pos	-0.782348	-0.7809083437167272	CCD S1 on	N	N
[mm] SIM defocus	0	0.001439871863259334	CCD S2 on	O1	Y
[mm] SIM translation stage pos	-233.592463	-233.5874344608287	CCD S3 on	O2	Y
[mm] SIM translation stage offset	0	-0.005018542100998502	CCD S4 on	N	N
[s] Observation start time (MET)	327821801.184000	327820733.90014	CCD S5 on	N	N
Observation start date	2008-05-22T05:35:36	2008-05-22T05:18:53	Number of optional ACIS chips dropped	0	0
[s] Observation end time (MET)	327841725.184000	327841951.91368	On-chip summing requested	N	N
Observation end date	2008-05-22T11:07:40	2008-05-22T11:12:31	Subarray requested	NONE	NONE
Read mode	TIMED	TIMED	Alternating exposures requested	N	N
			[s] Primary exposure time	0.000000	3.2

2.3 Aspect



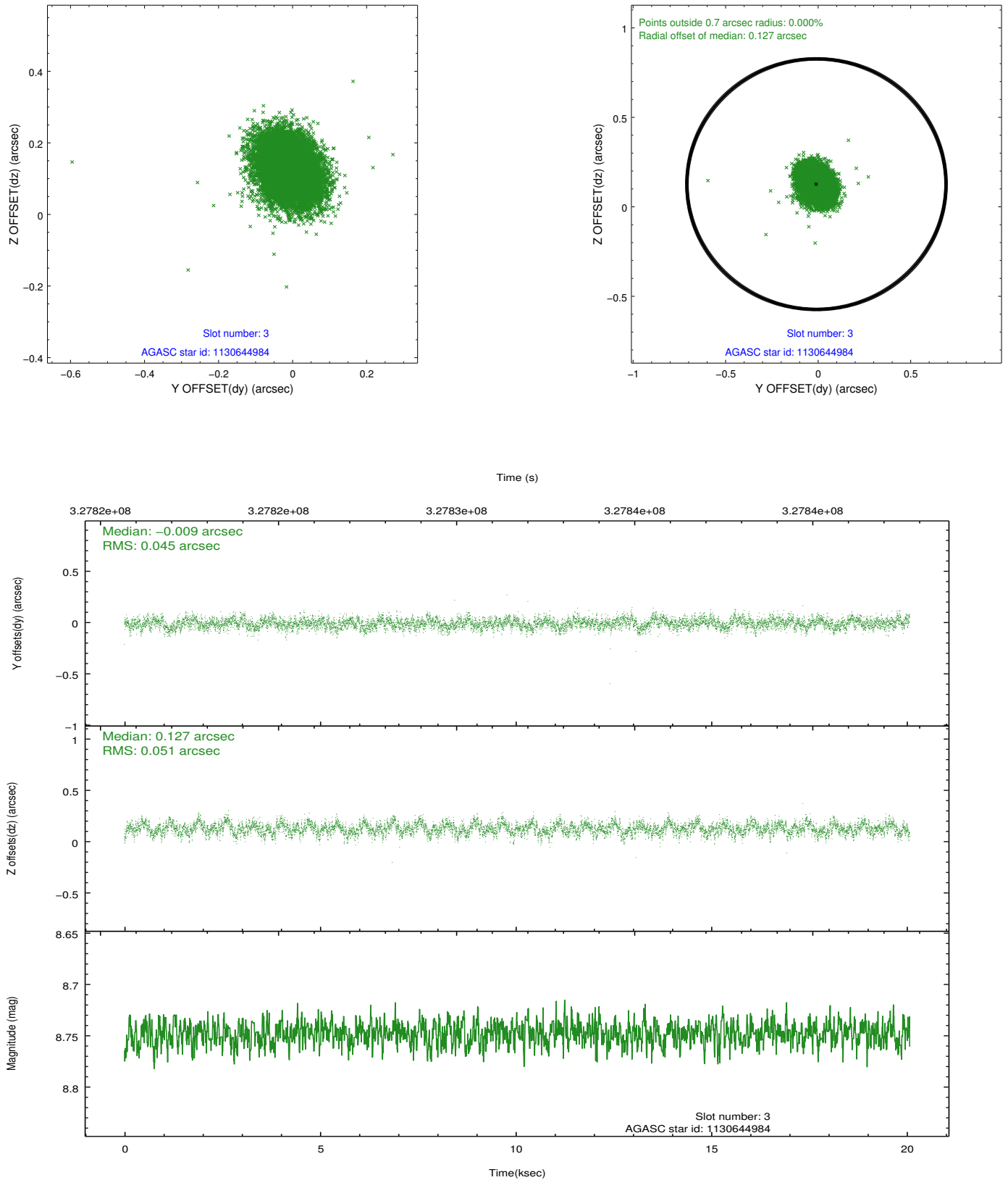


Slot Statistics

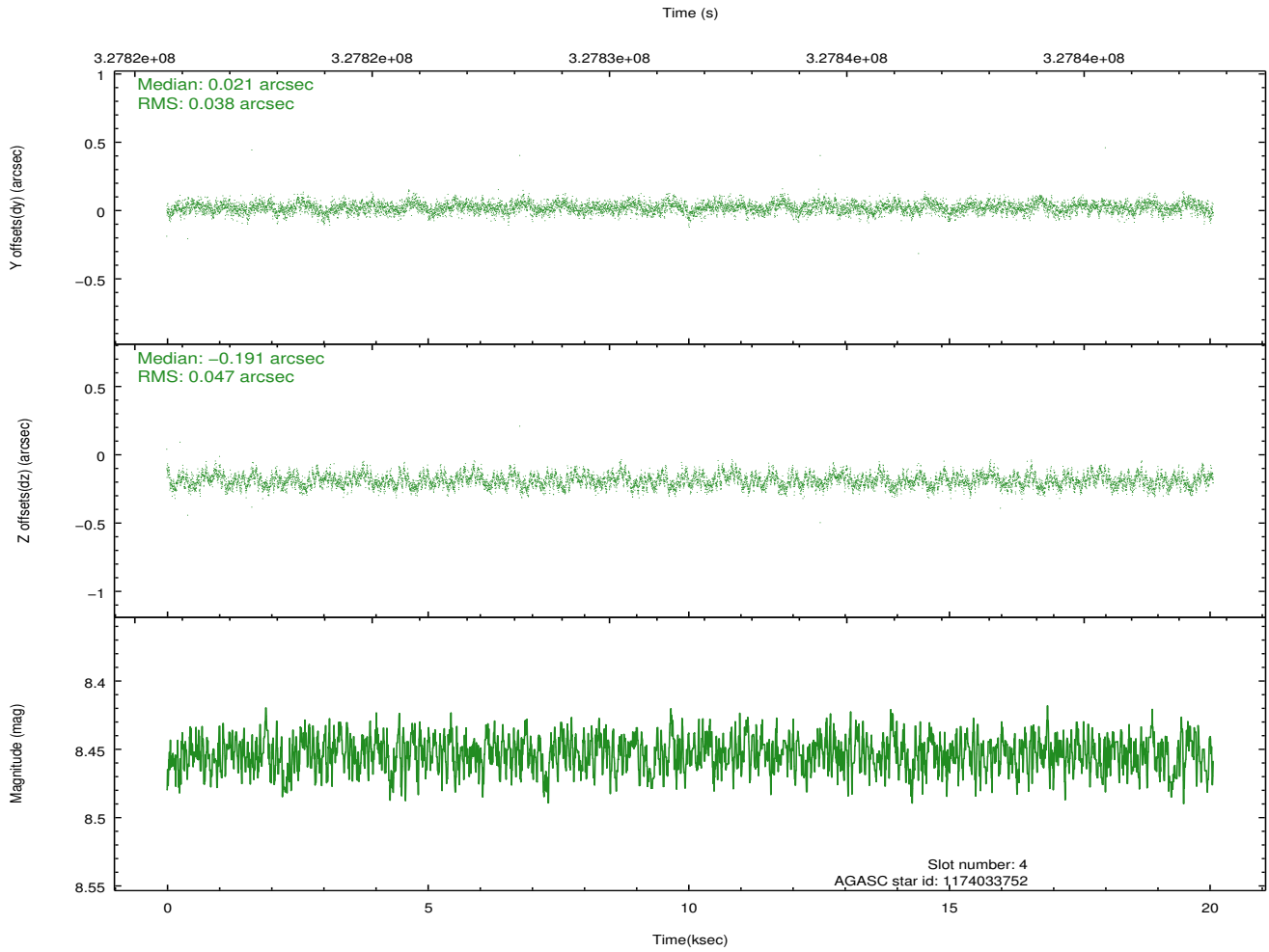
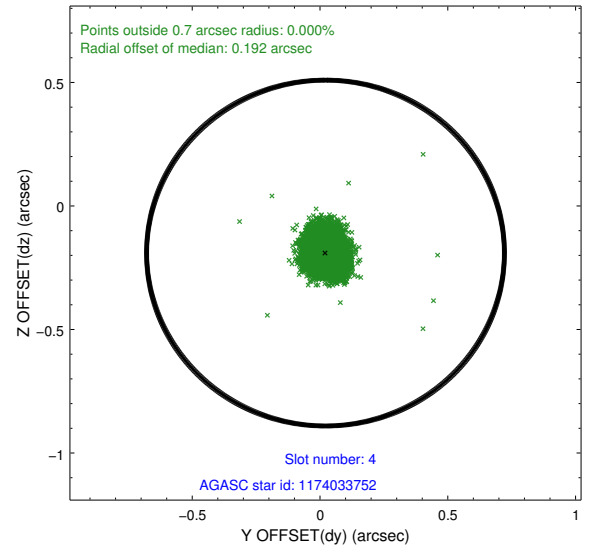
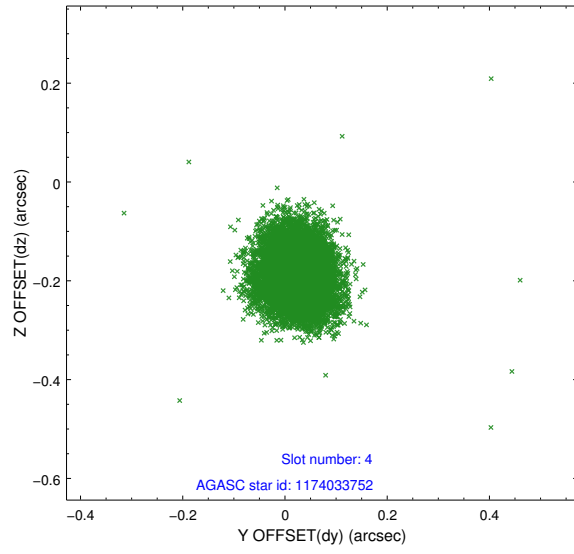
slot	status	id	mag	n_pts	med_dy	med_dz	dr1	dr2	ra	dec	mean_y	mean_z
0	FID	ACIS-I-1	7.03	4897	-0.057	0.064	0.010	0.017	0.000000	0.000000	926.31	-838.22
1	FID	ACIS-I-2	6.96	4896	-0.128	-0.075	0.009	0.023	0.000000	0.000000	-767.75	-844.87
2	FID	ACIS-I-4	6.96	4897	0.086	0.078	0.008	0.016	0.000000	0.000000	2146.28	1061.49
3	GUIDE	1130644984	8.75	9781	-0.009	0.127	0.072	0.117	162.123834	-59.745452	-1712.33	-217.11
4	GUIDE	1174033752	8.45	9789	0.021	-0.191	0.064	0.103	162.418977	-60.164599	-243.71	417.06
5	GUIDE	1174163024	7.68	9790	-0.026	0.055	0.060	0.097	163.312914	-60.814777	1998.13	2139.68
6	GUIDE	1174012960	7.16	9792	-0.070	-0.001	0.053	0.082	160.855674	-60.332270	577.16	-2319.36
7	GUIDE	1174021440	8.41	9785	0.078	0.010	0.068	0.110	160.869011	-60.314711	511.82	-2302.14

2.4 Star Slots

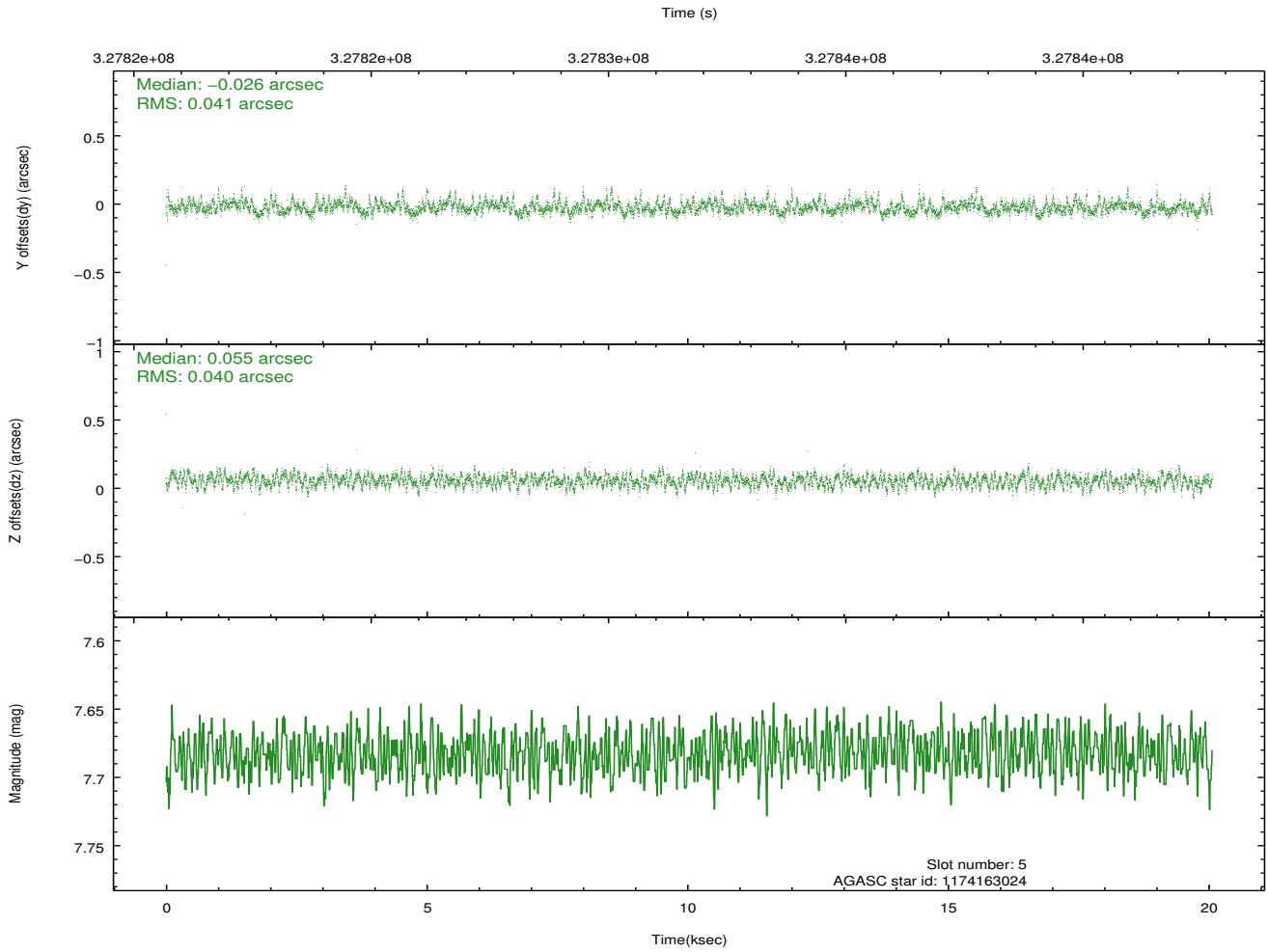
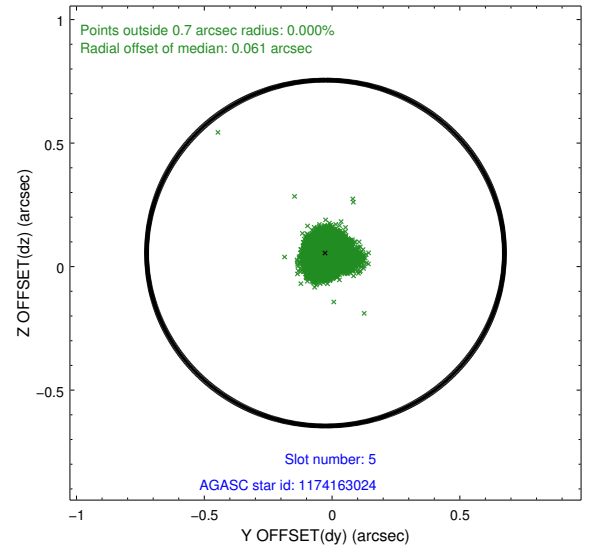
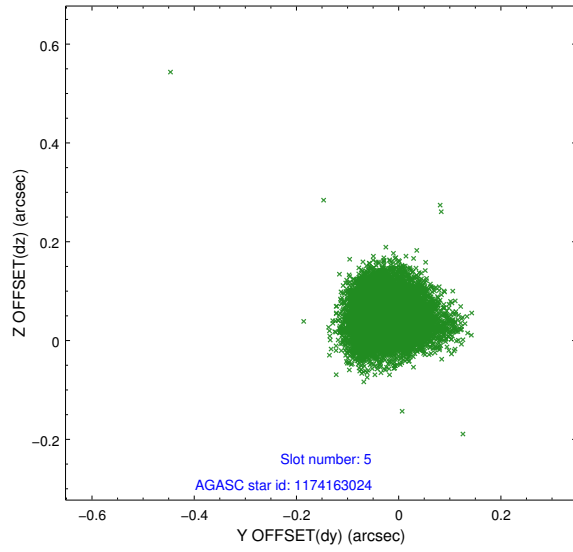
2.4.1 Slot 3



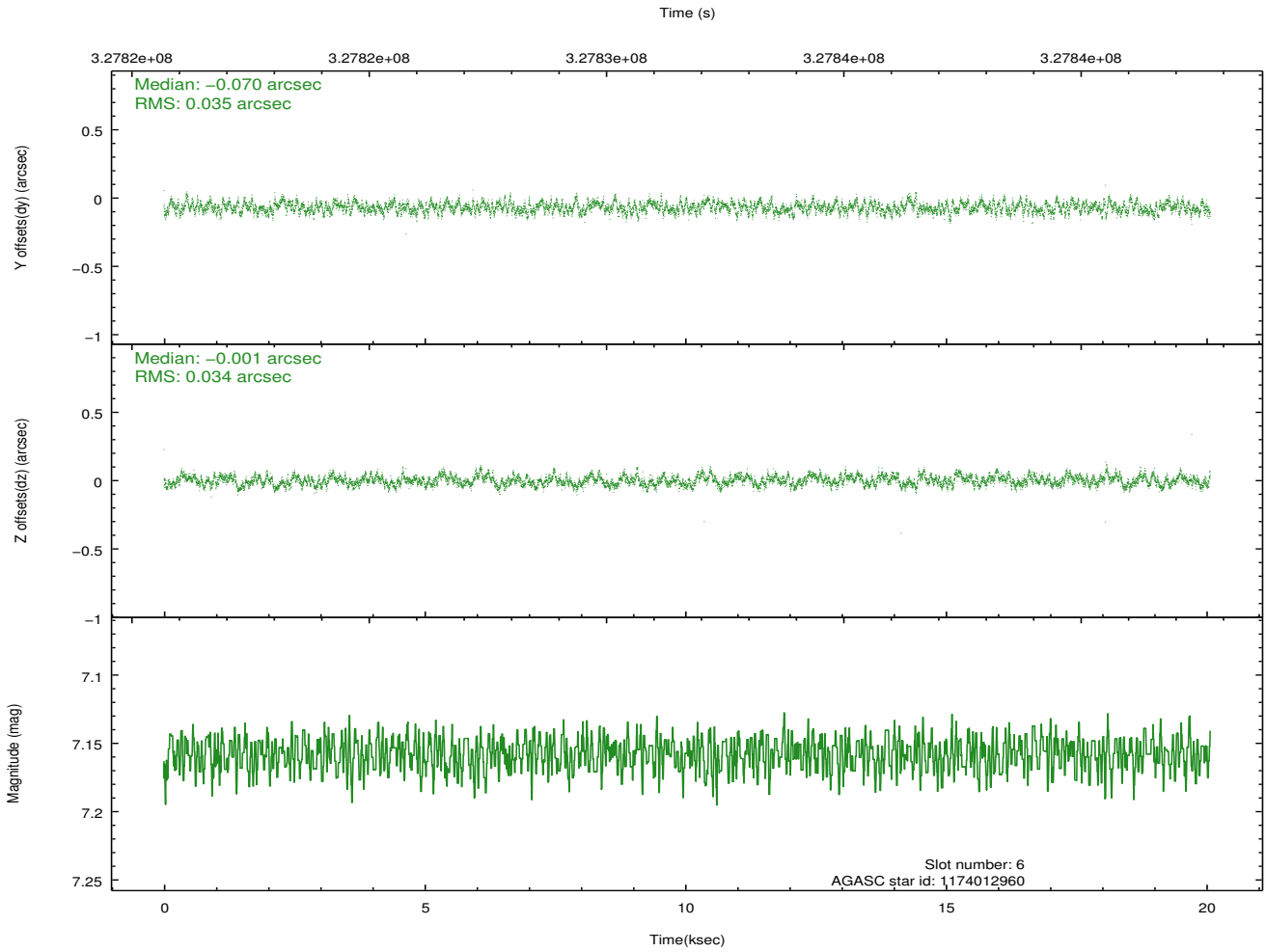
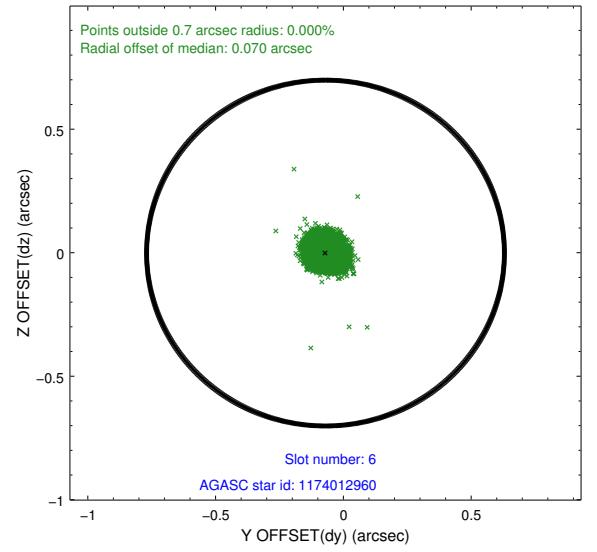
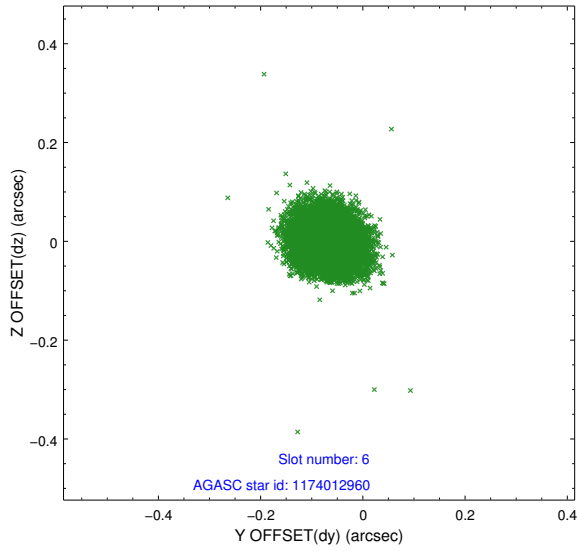
2.4.2 Slot 4



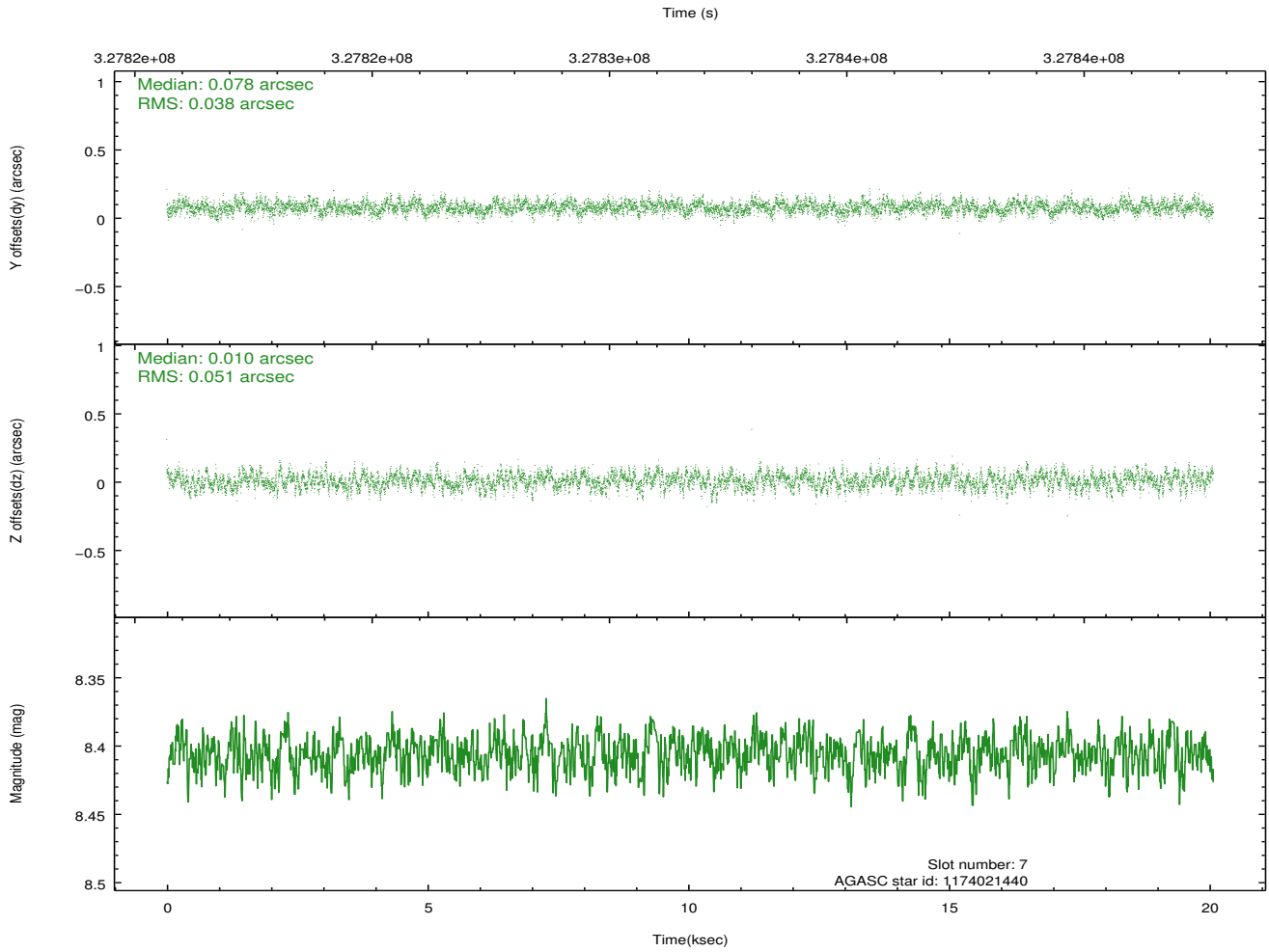
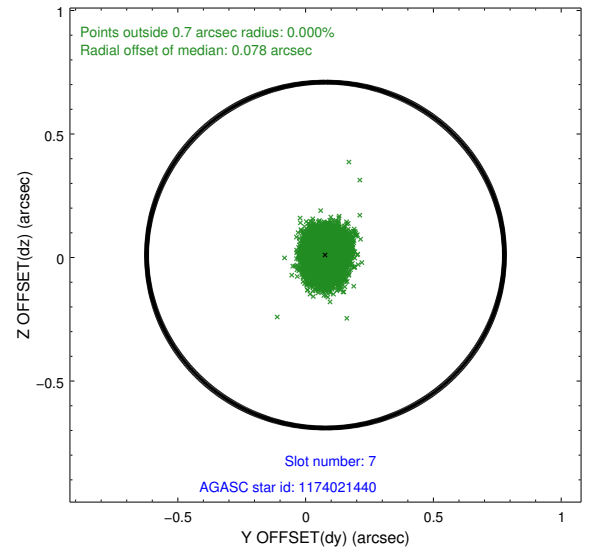
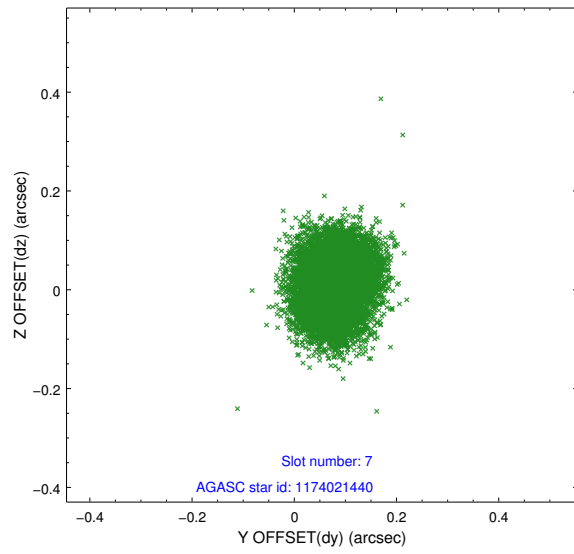
2.4.3 Slot 5



2.4.4 Slot 6

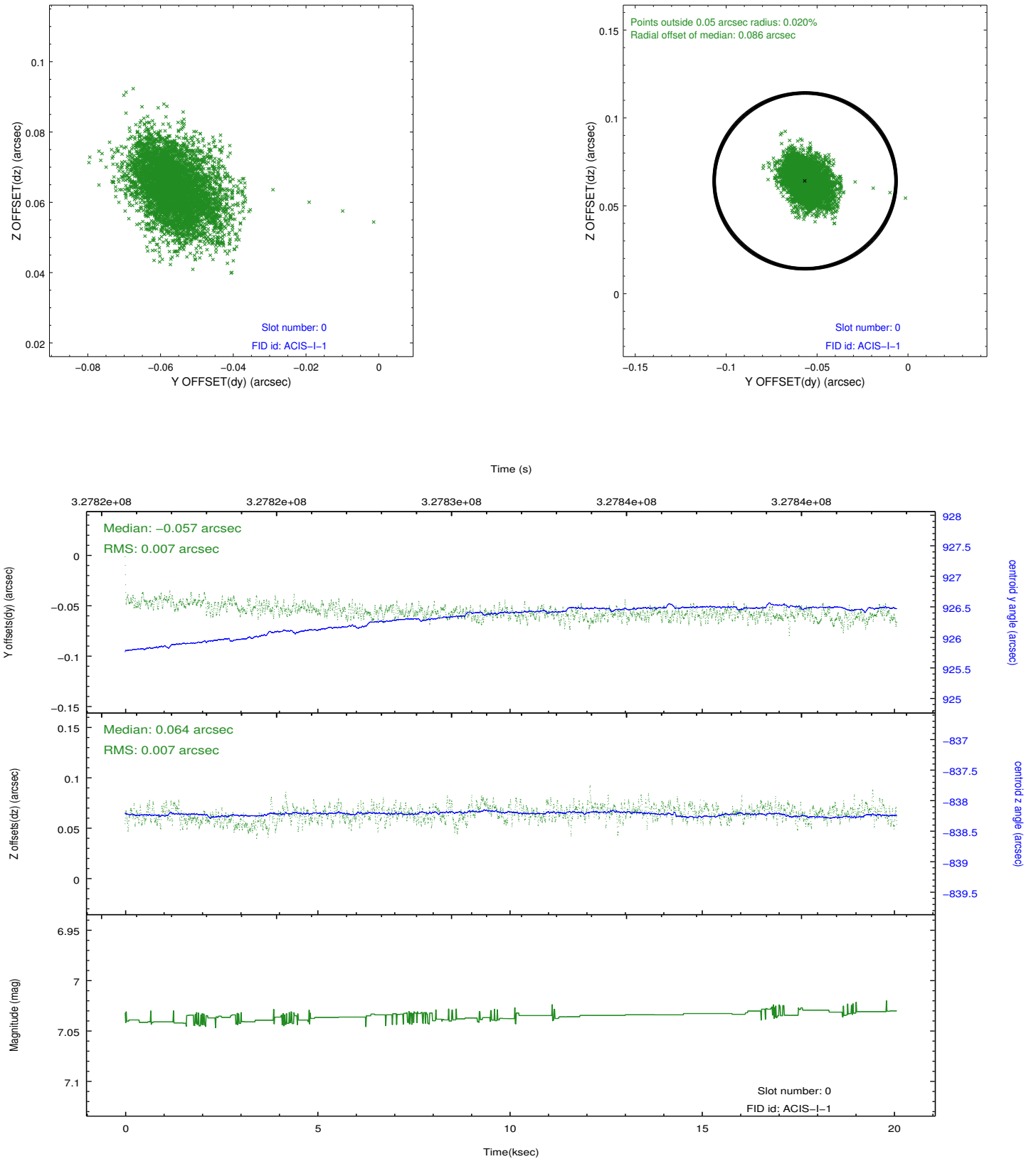


2.4.5 Slot 7

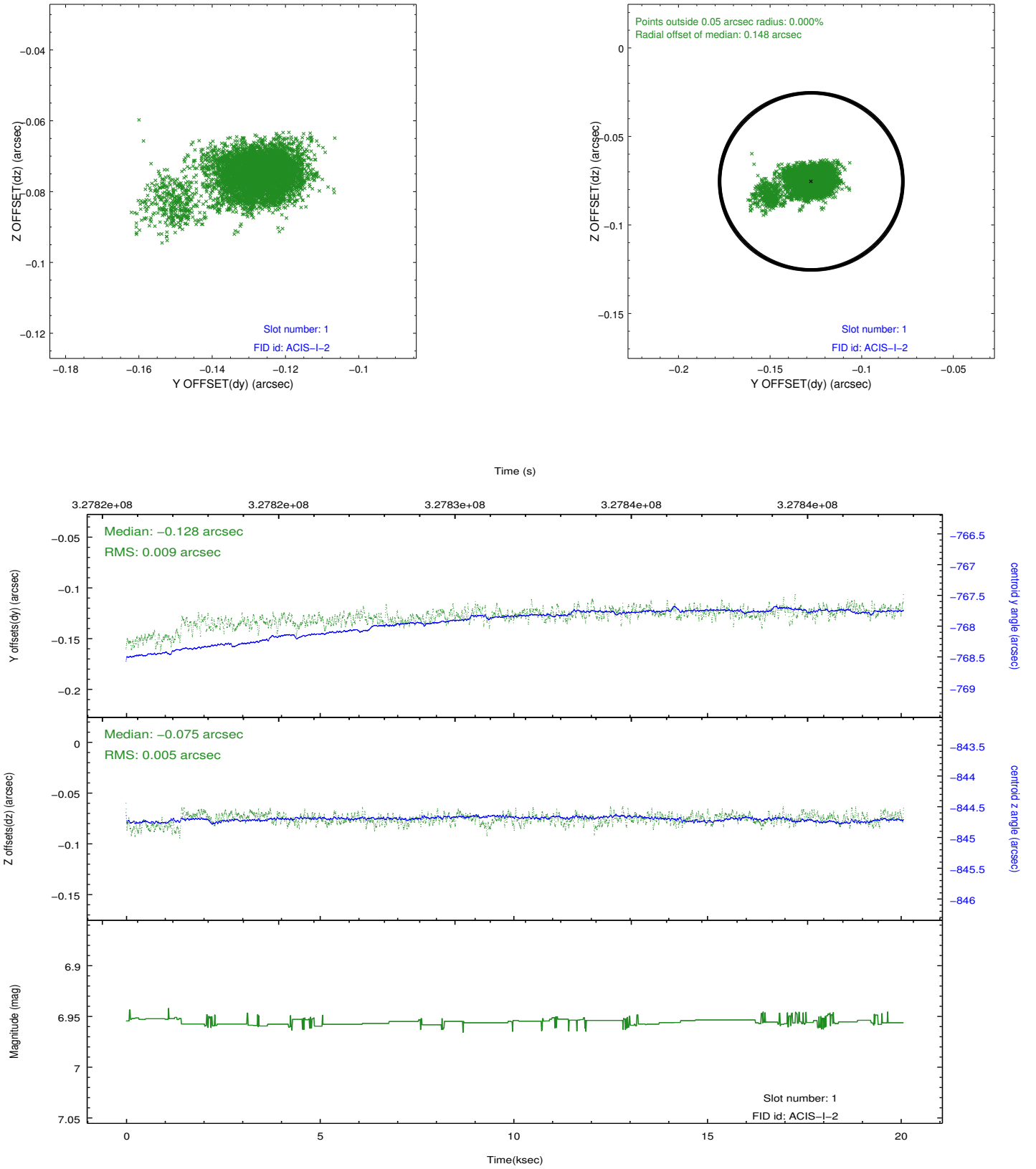


2.5 FID Slots

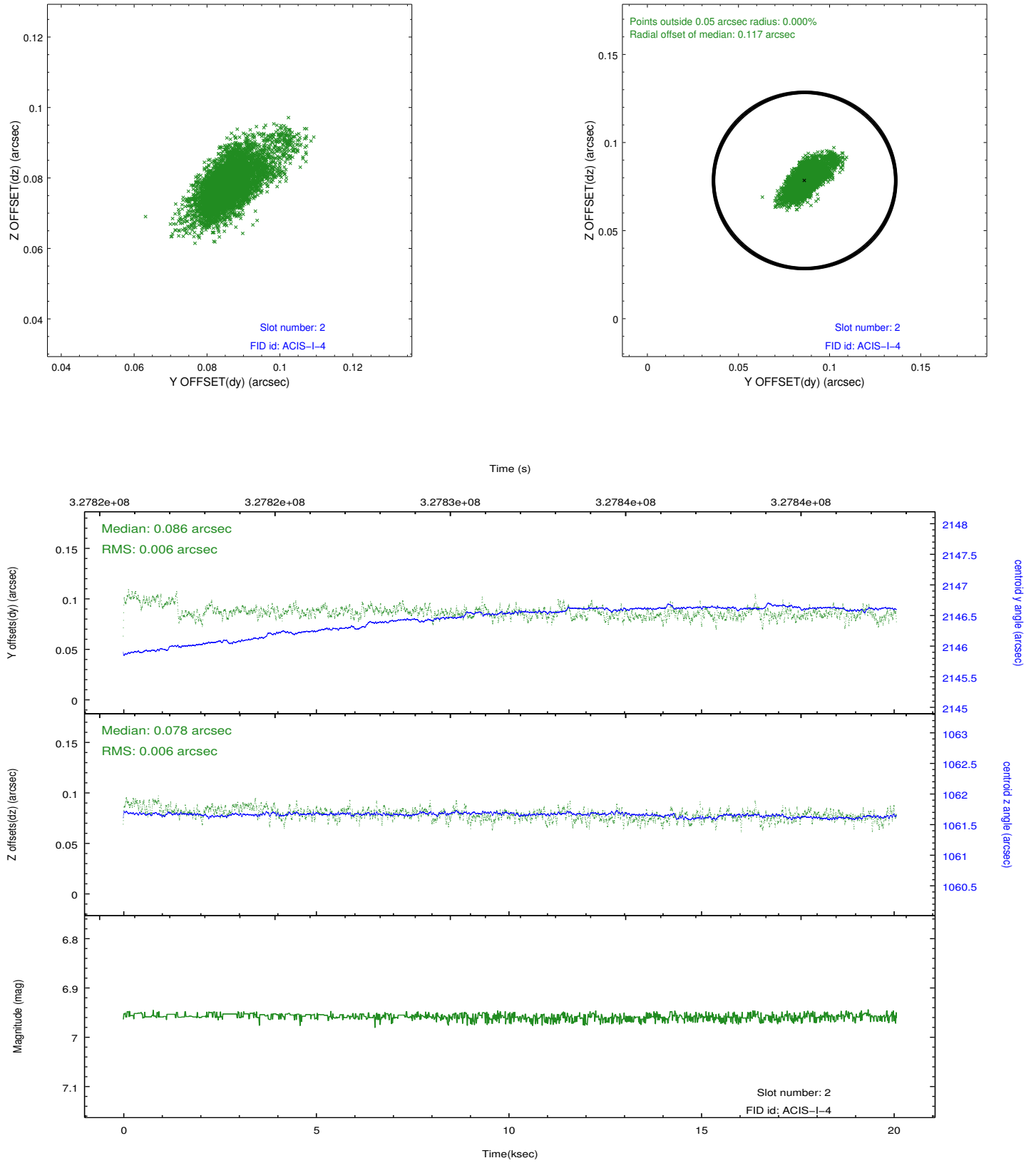
2.5.1 Slot 0



2.5.2 Slot 1



2.5.3 Slot 2



A Summary

A.1 Status

V&V Scientist	Jen Lauer
V&V Date (YYYY-MM-DD)	2012.05.21
V&V Edition	1
V&V Disposition and Status	OK
V&V Charge Time	20.0671589

A.2 Comments