

# V&V Reference Report

## L2 ASCDS Version : 8.4.4

Observation 9447 - L2 Version 2  
Chandra X-Ray Center

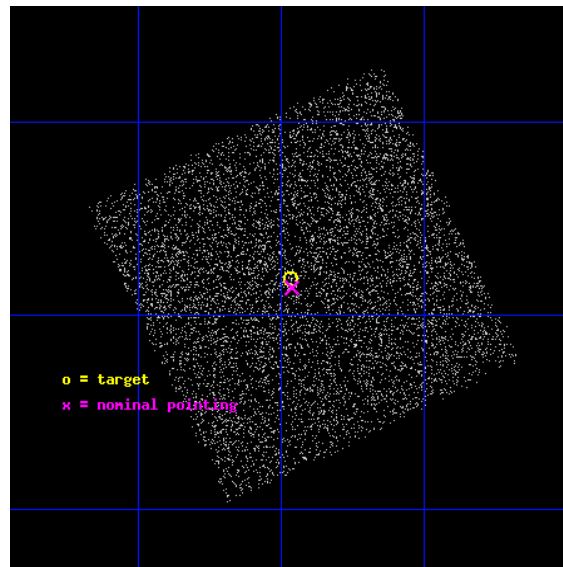
L2 Processing Date : May 18 2012

## Contents

<b>1</b>	<b>Front</b>	<b>2</b>
<b>2</b>	<b>OBI</b>	<b>3</b>
2.1	OBI . . . . .	3
2.1.1	Images . . . . .	3
2.1.2	Bias . . . . .	3
2.1.3	Parameters . . . . .	4
2.1.4	Events . . . . .	4
2.2	Compared Parameters . . . . .	5
2.3	Aspect . . . . .	6
2.4	Star Slots . . . . .	9
2.4.1	Slot 3 . . . . .	9
2.4.2	Slot 4 . . . . .	10
2.4.3	Slot 5 . . . . .	11
2.4.4	Slot 6 . . . . .	12
2.4.5	Slot 7 . . . . .	13
2.5	FID Slots . . . . .	14
2.5.1	Slot 0 . . . . .	14
2.5.2	Slot 1 . . . . .	15
2.5.3	Slot 2 . . . . .	16
<b>A</b>	<b>Summary</b>	<b>17</b>
A.1	Status . . . . .	17
A.2	Comments . . . . .	17

# 1 Front

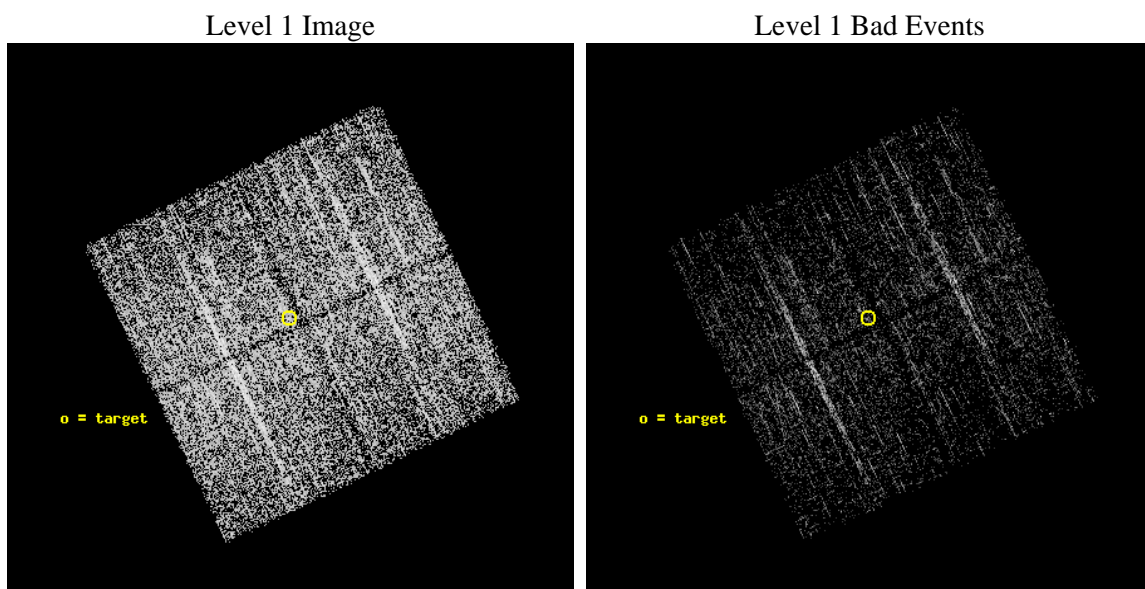
seq_num	900793	Sequence number
obs_id	9447	Observation id
title	Comparing the emission from an unbiased AGN sample with the X-ray background	Proposal title
observer	Dr Roland Walter	Principal investigator
object	J12036-0358	Source name
dtcycle	0	&#160
cycle	P	events from which exps? Prim/Second/Both
ra_targ	180.991667	Observer's specified target RA [deg]
dec_targ	-3.968056	Observer's specified target Dec [deg]
ra_nom	180.99042320743	Nominal RA [deg]
dec_nom	-3.9761787449825	Nominal Dec [deg]
roll_nom	244.09223402674	Nominal Roll [deg]
revision	2	Processing version of data
ontime	2142.1000164747	Sum of GTIs [s]
livetime	2114.1119027684	Livetime [s]
ontime0	2142.1000164747	Sum of GTIs [s]
ontime1	2142.1000164747	Sum of GTIs [s]
ontime2	2142.1000164747	Sum of GTIs [s]
ontime3	2142.1000164747	Sum of GTIs [s]
l2events	8897	Number of level 2 events



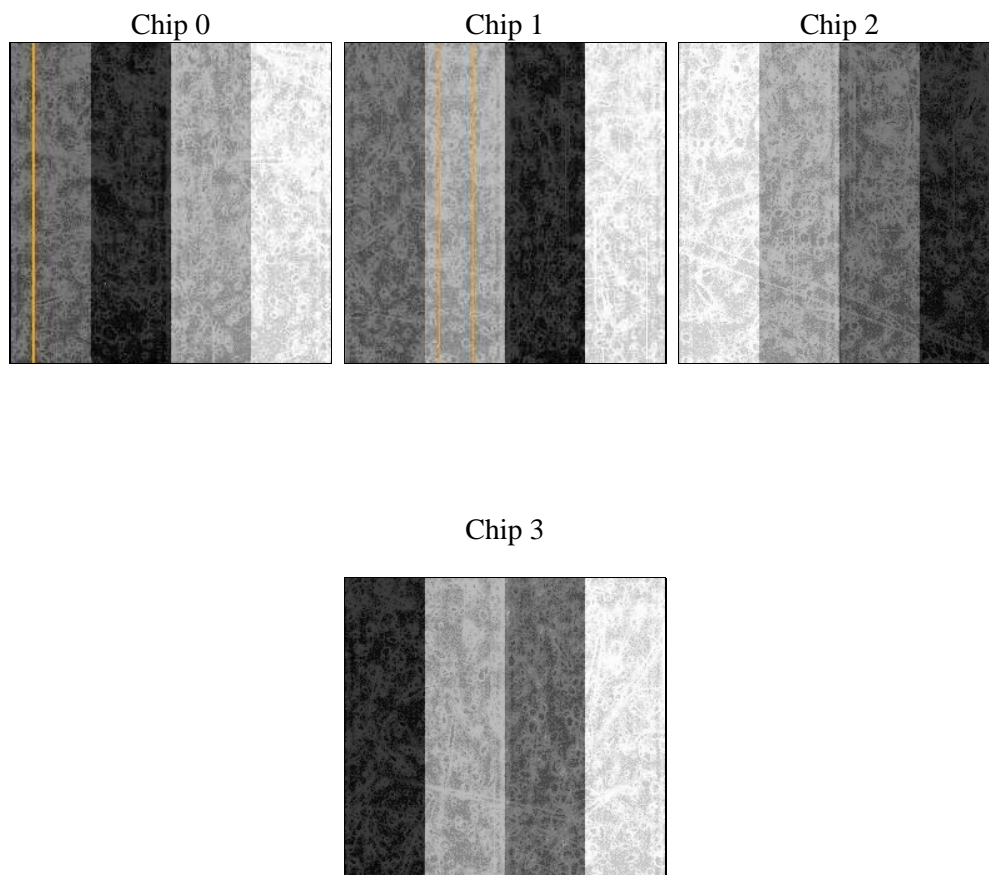
## 2 OBI

### 2.1 OBI

#### 2.1.1 Images



#### 2.1.2 Bias



### 2.1.3 Parameters

obi_num	0	Obi number	sched_exp_time	2000.000000	[s] Scheduled observation exposure time
ascdsver	8.4.4	Processing system revision	ontime	2142.1000164747	Sum of GTIs [s]
caldsver	4.4.9	&#160	ontime0	2142.1000164747	Sum of GTIs [s]
date	2012-05-19T01:37:46	Date and time of file creation	ontime1	2142.1000164747	Sum of GTIs [s]
revision	2	Processing version of data	ontime2	2142.1000164747	Sum of GTIs [s]
			ontime3	2142.1000164747	Sum of GTIs [s]
			l1events	97362	Number of level 1 events

### 2.1.4 Events

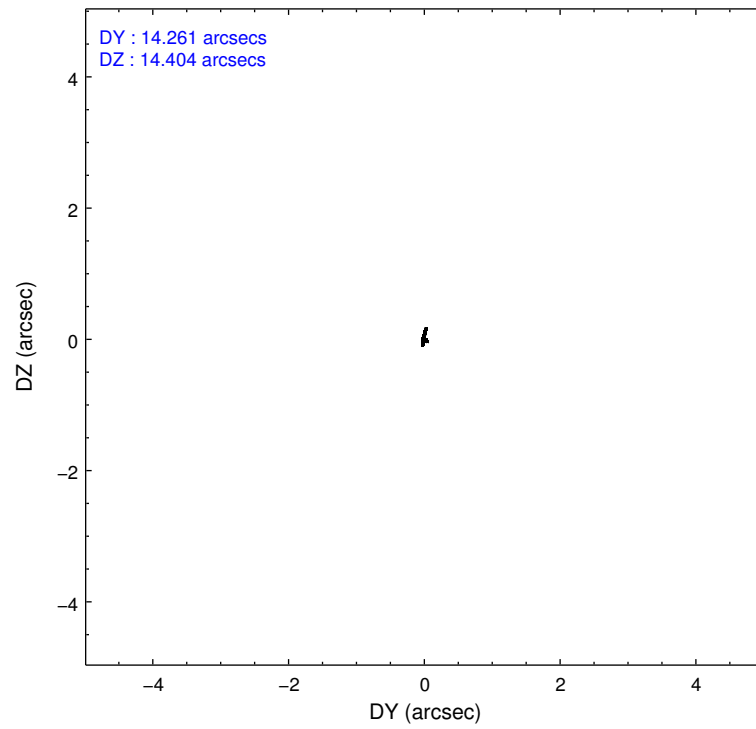
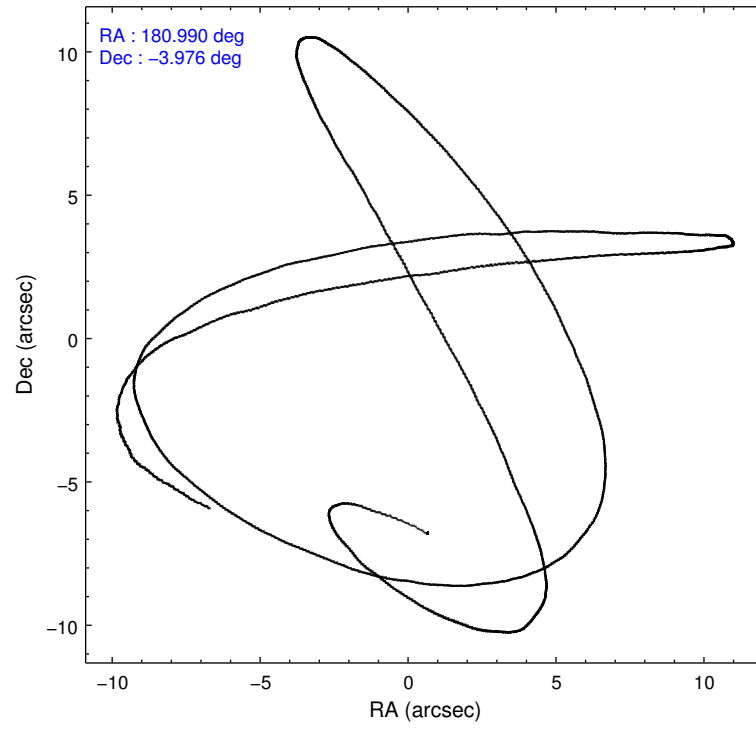
	ccd 0	ccd 1	ccd 2	ccd 3
level 1 events	22668	24979	25816	23899
rejected events	20049	22226	23301	21376
rejected %	88%	88%	90%	89%

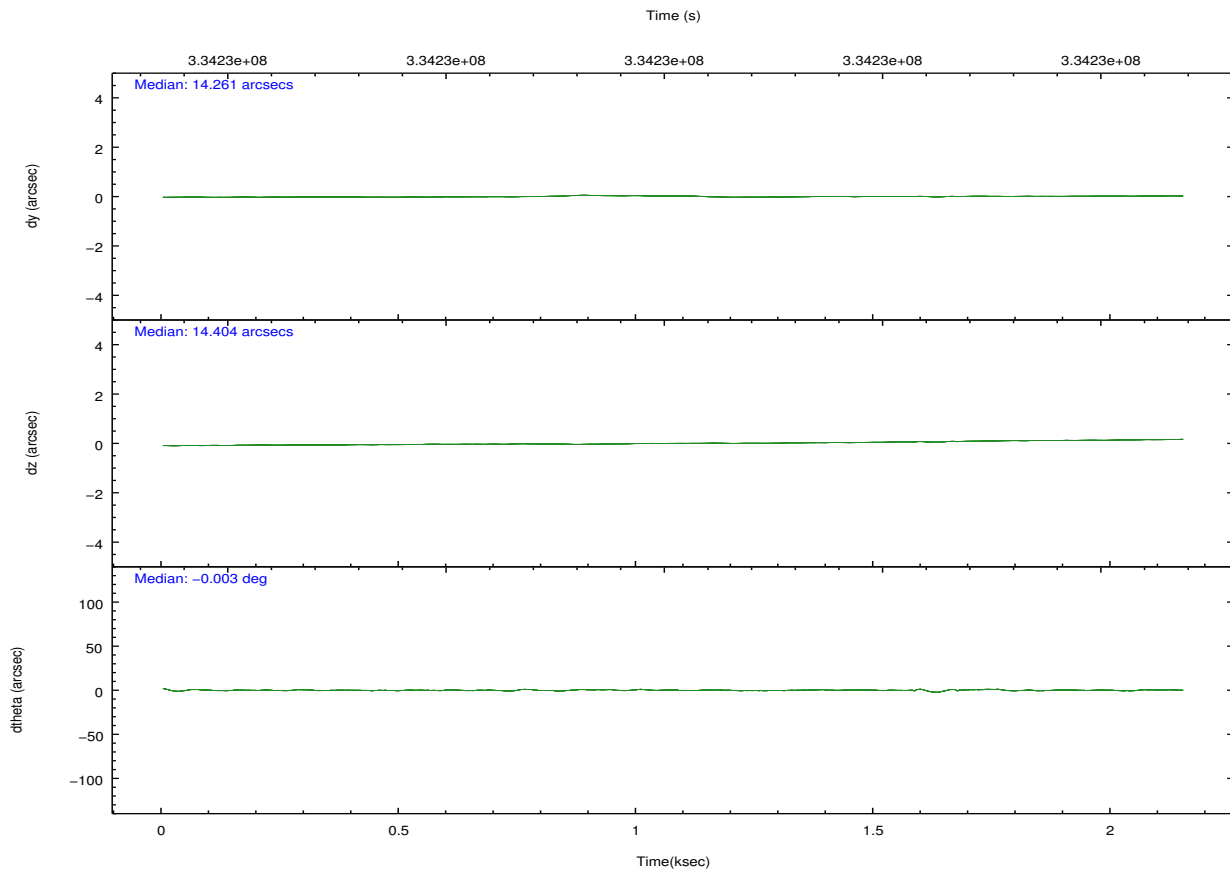
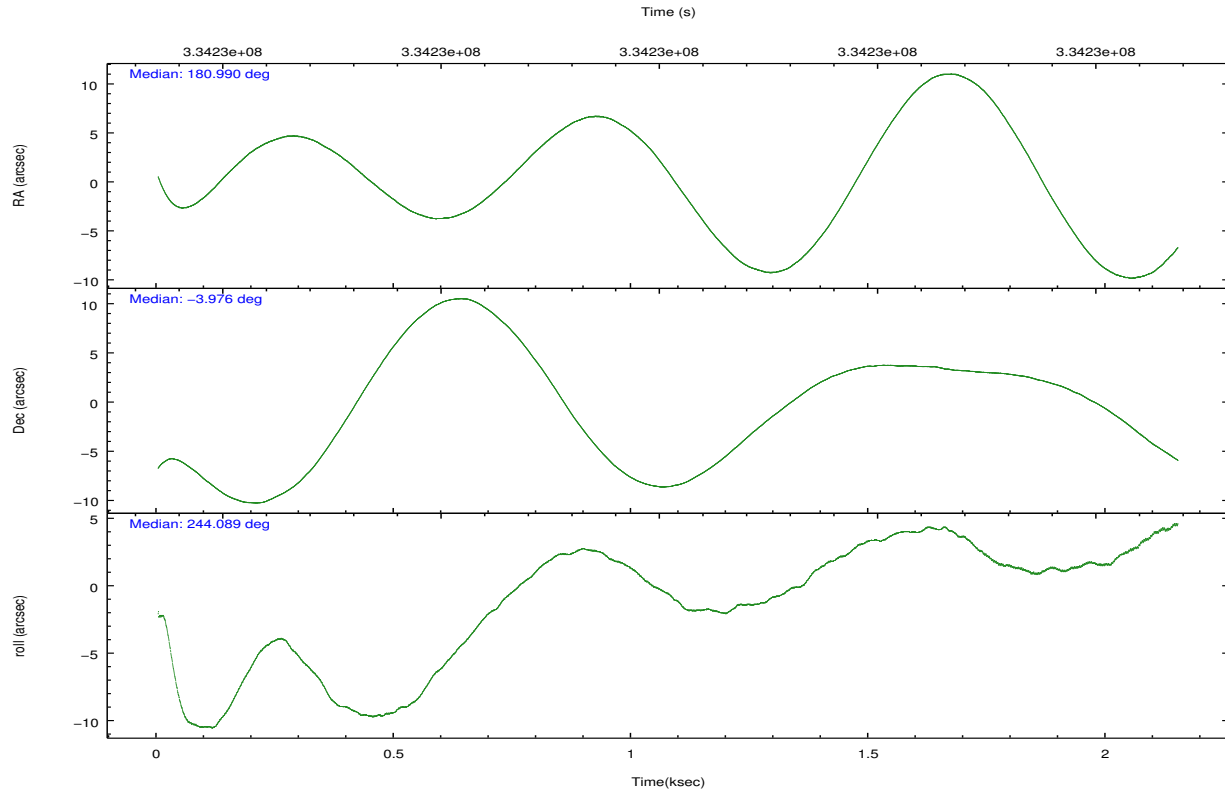
	ccd 0	ccd 1	ccd 2	ccd 3
grade 0 events	1360	1270	1339	1329
	5%	5%	5%	5%
grade 1 events	18	13	23	13
	0%	0%	0%	0%
grade 2 events	735	809	688	614
	3%	3%	2%	2%
grade 3 events	277	336	291	298
	1%	1%	1%	1%
grade 4 events	296	286	253	264
	1%	1%	0%	1%
grade 5 events	1040	1120	1087	1190
	4%	4%	4%	4%
grade 6 events	560	677	495	589
	2%	2%	1%	2%
grade 7 events	18382	20468	21640	19602
	81%	81%	83%	82%

## 2.2 Compared Parameters

Parameter	Planned	Actual	Parameter	Planned	Actual
Instrument	ACIS	ACIS	Obspar format version number	7	7
Detector	ACIS-0123	ACIS-0123	Obspar file type	PREDICTED	ACTUAL
Grating	NONE	NONE	Obspar update status	NONE	UPDATED
Data mode	FAINT	FAINT	Number of optional ACIS chips dropped	0	0
Observation mode	POINTING	POINTING	On-chip summing requested	N	N
[deg] Pointing RA	180.988372	180.9904232074256	Subarray requested	NONE	NONE
[deg] Pointing Dec	-3.948627	-3.976178744982513	Alternating exposures requested	N	N
[deg] Pointing Roll	243.883390	244.0922340267352	[s] Primary exposure time	0.000000	3.1
[mm] SIM focus pos	-0.782348	-0.7809083437167272			
[mm] SIM defocus	0	0.001439871863259334			
[mm] SIM translation stage pos	-233.592463	-233.5874344608287			
[mm] SIM translation stage offset	0	-0.005018542100998502			
[s] Observation start time (MET)	334228602.184000	334227447.51352			
Observation start date	2008-08-04T09:15:37	2008-08-04T08:57:27			
[s] Observation end time (MET)	334230602.184000	334230999.6512			
Observation end date	2008-08-04T09:48:57	2008-08-04T09:56:39			
Read mode	TIMED	TIMED			

## 2.3 Aspect





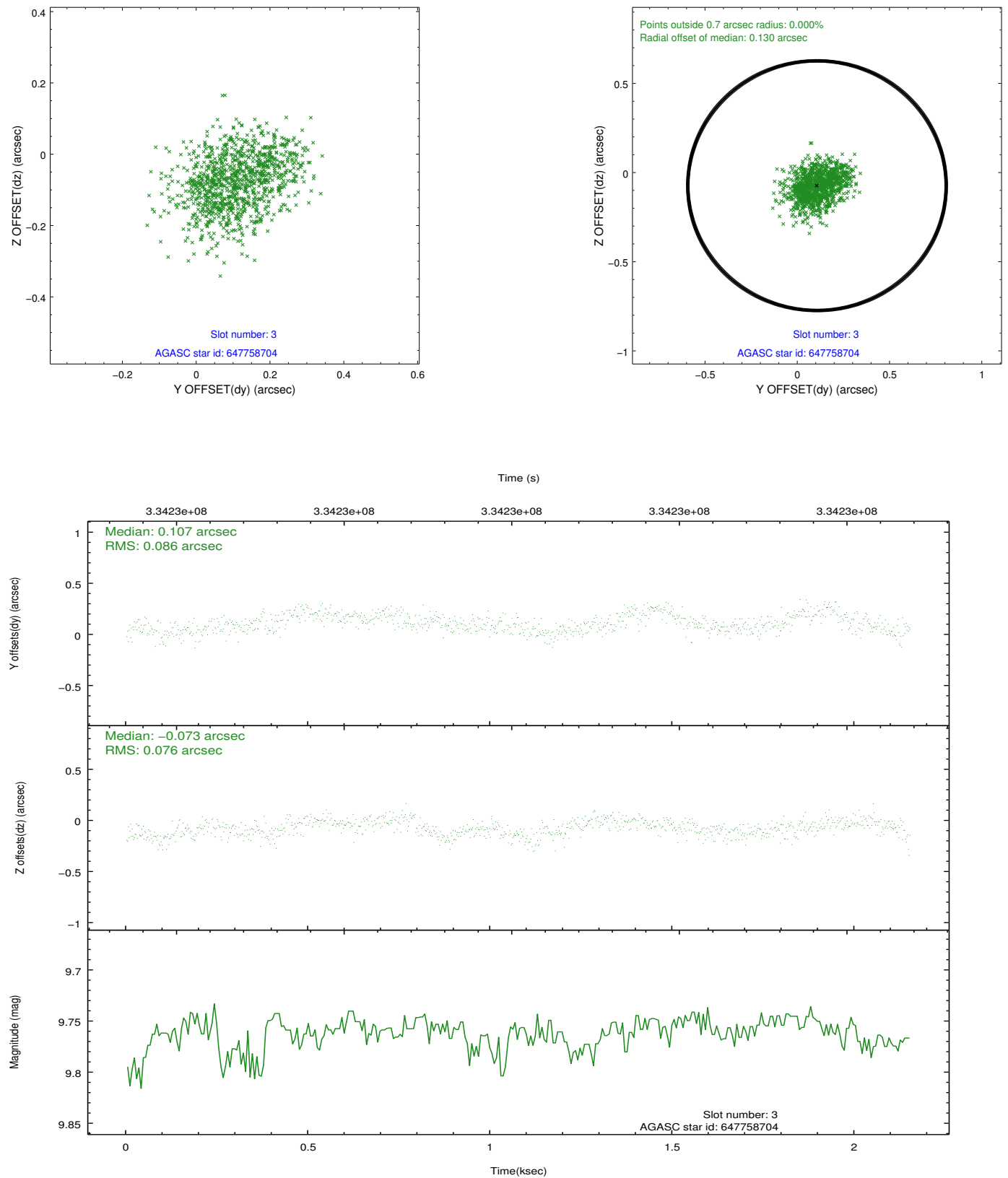
### Slot Statistics

slot	status	id	mag	n_pts	med_dy	med_dz	dr1	dr2	ra	dec	mean_y	mean_z
0	FID	ACIS-I-1	7.06	525	0.003	0.047	0.006	0.011	0.000000	0.000000	925.24	-837.94
1	FID	ACIS-I-5	7.04	525	-0.192	0.021	0.005	0.009	0.000000	0.000000	-1821.42	1057.97
2	FID	ACIS-I-6	7.06	525	0.097	0.002	0.006	0.011	0.000000	0.000000	387.54	1705.92
3	GUIDE	647758704	9.76	1047	0.107	-0.073	0.121	0.194	181.156581	-3.382953	-2094.66	-353.80
4	GUIDE	647761936	9.63	1050	0.055	-0.035	0.169	0.262	181.259040	-4.326635	792.05	1471.26
5	GUIDE	647762544	9.09	1049	-0.080	-0.191	0.115	0.188	180.997114	-4.117053	531.62	296.18
6	GUIDE	647762608	9.70	1050	0.125	0.188	0.166	0.274	181.253470	-4.036988	-132.78	995.14
7	GUIDE	647764008	9.50	1048	-0.203	0.117	0.133	0.225	181.726957	-3.617928	-2236.34	1859.92

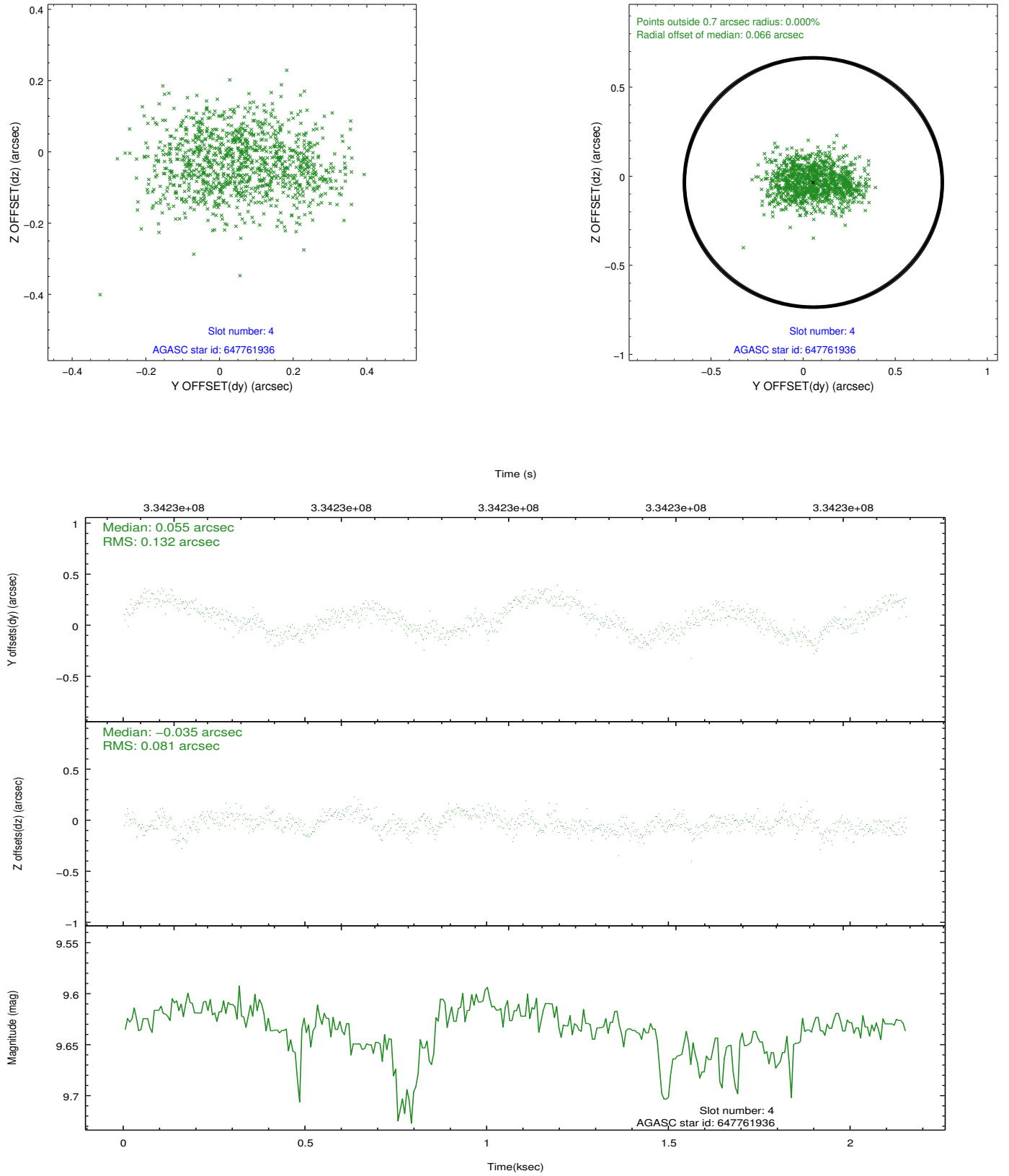


## 2.4 Star Slots

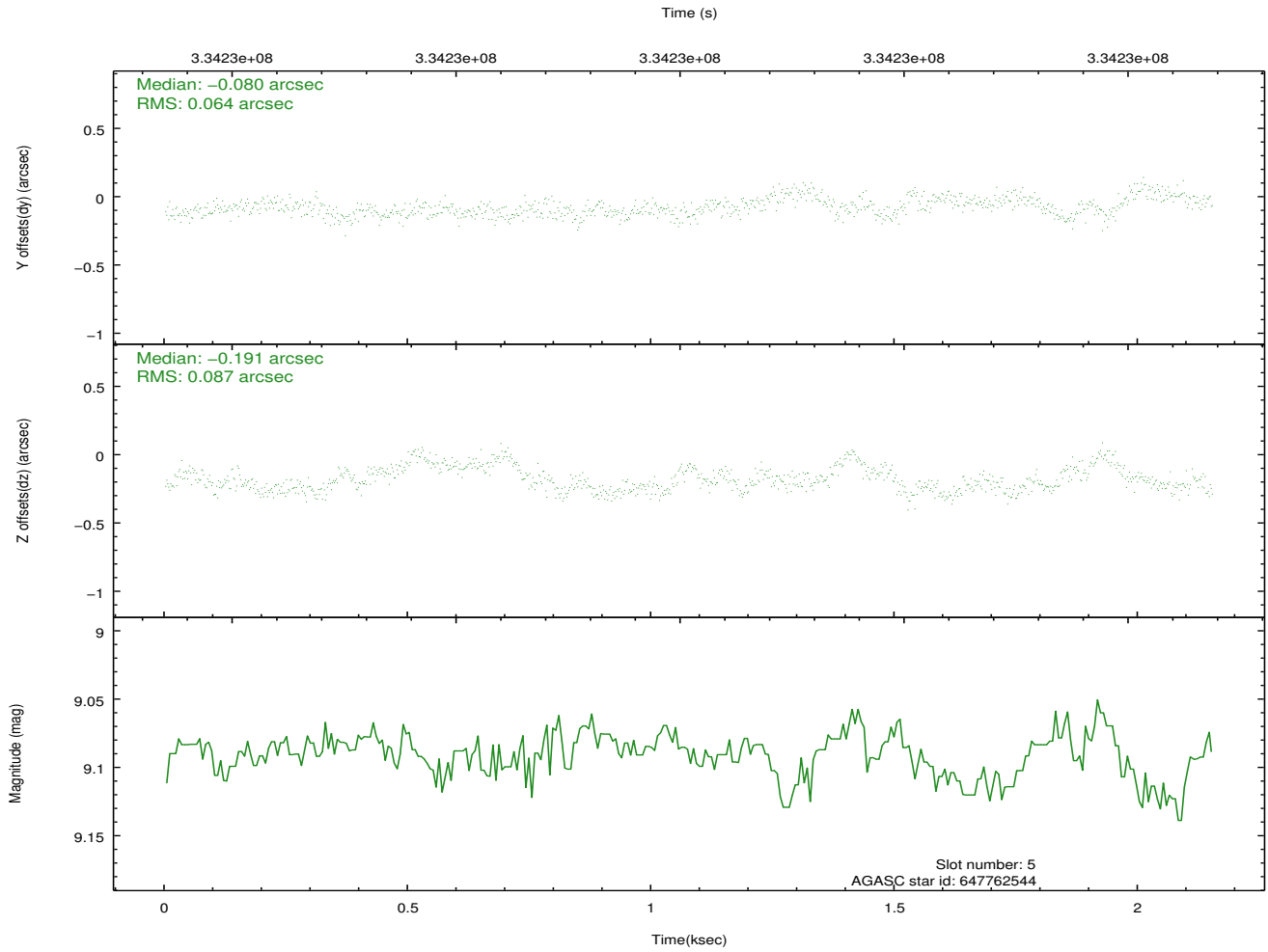
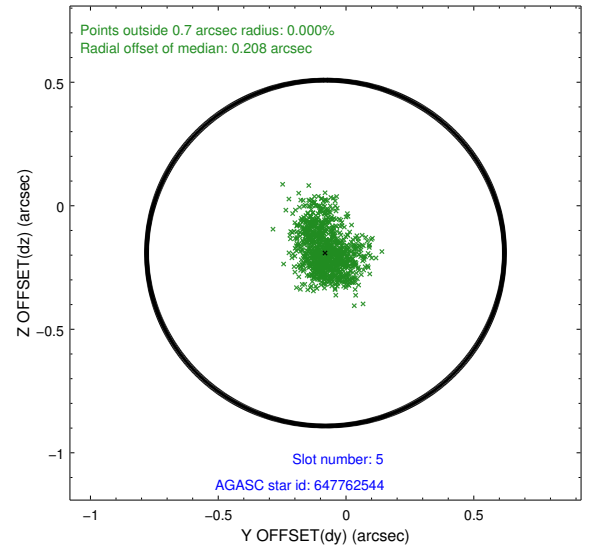
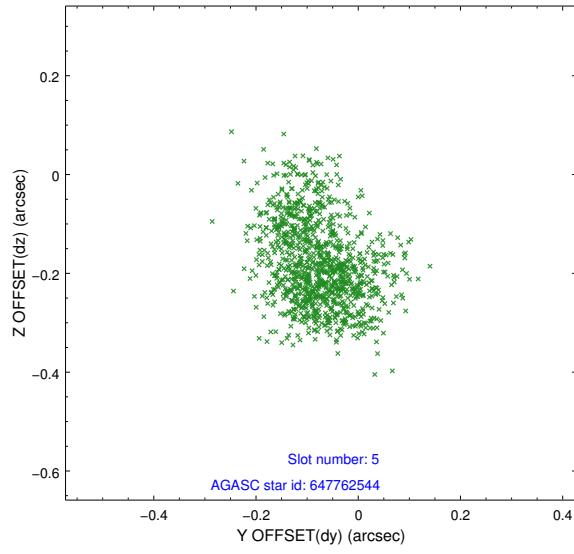
### 2.4.1 Slot 3



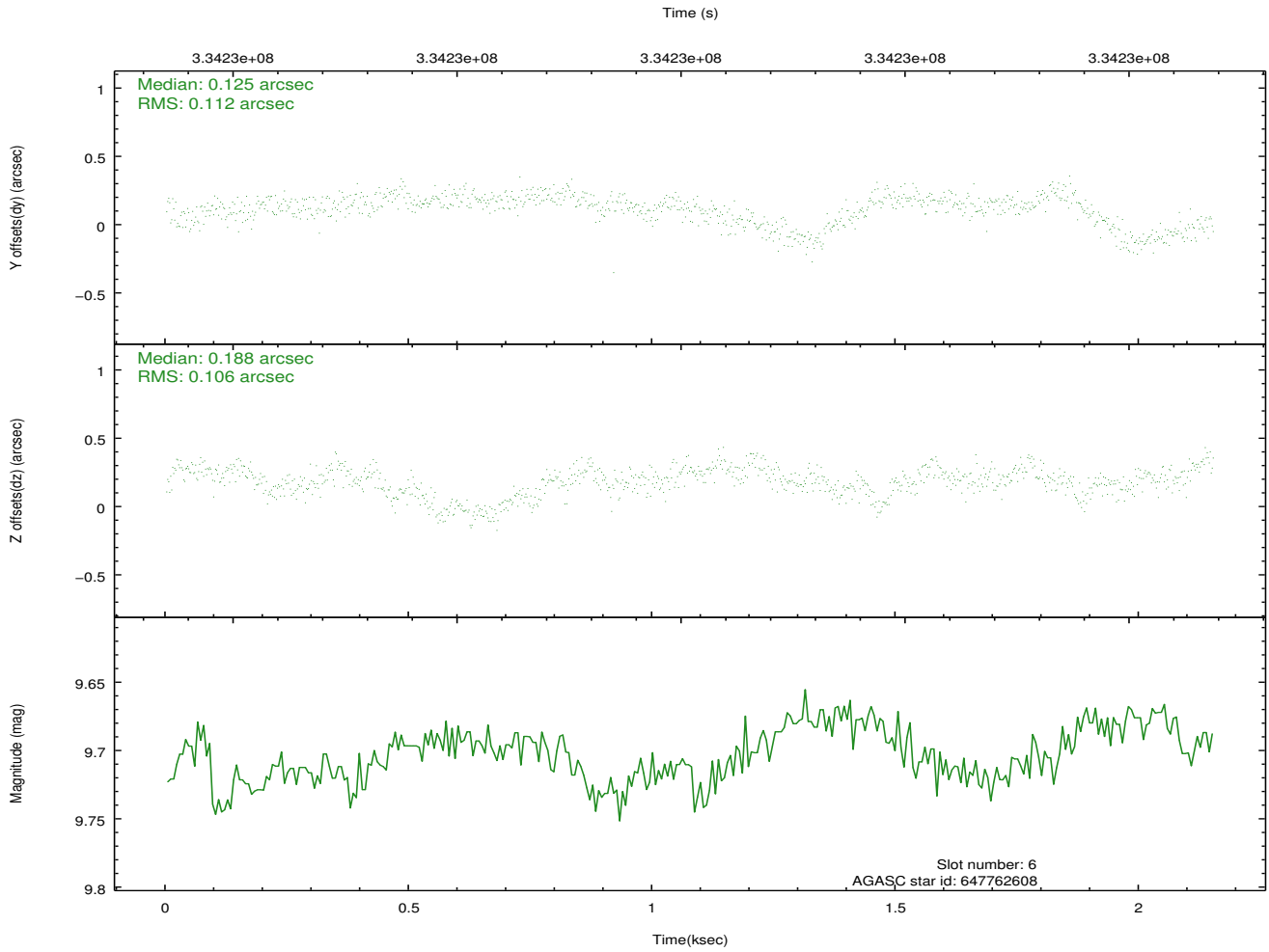
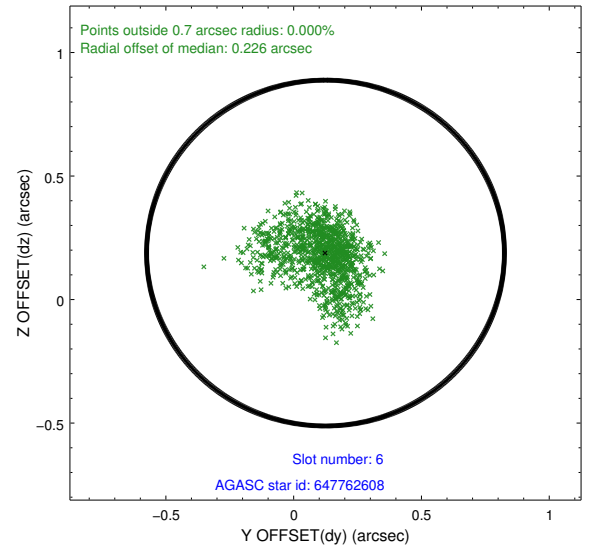
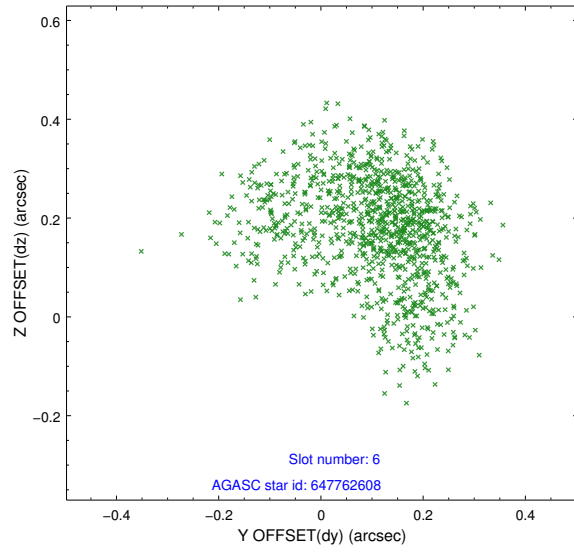
## 2.4.2 Slot 4



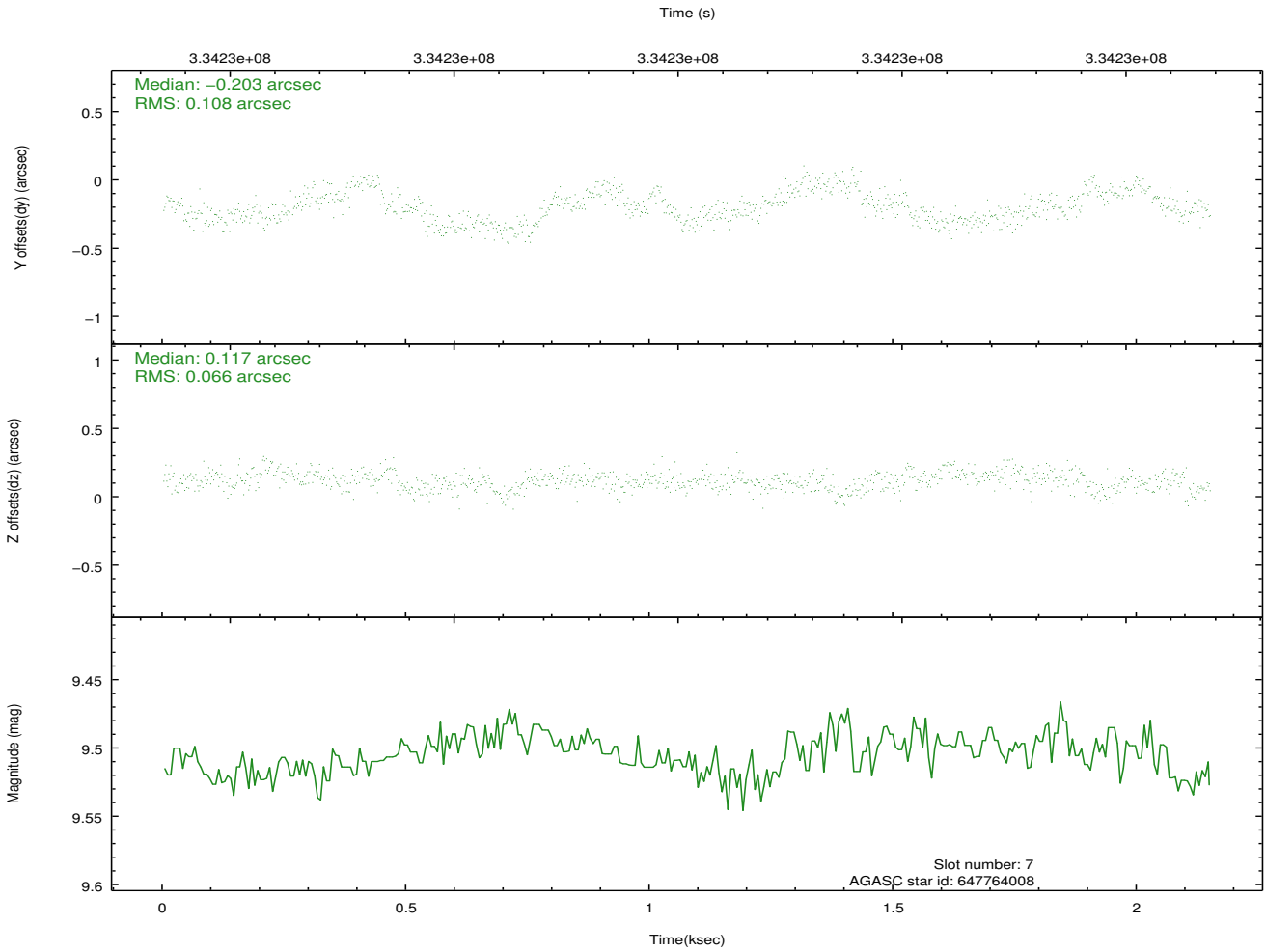
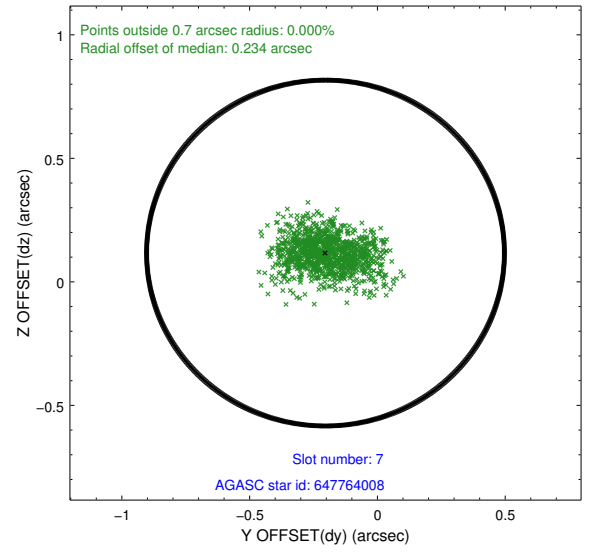
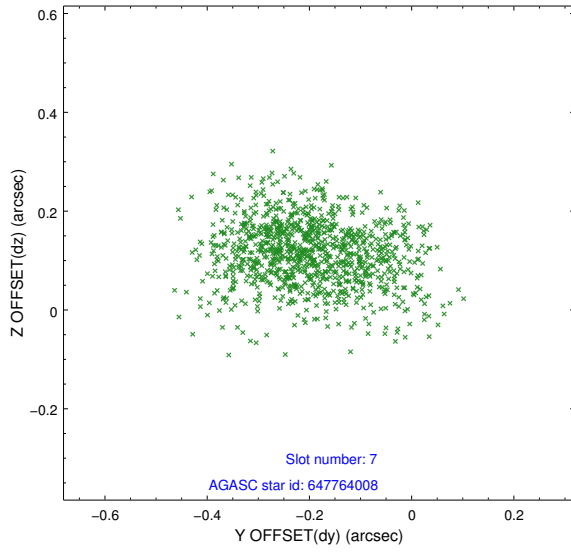
### 2.4.3 Slot 5



## 2.4.4 Slot 6

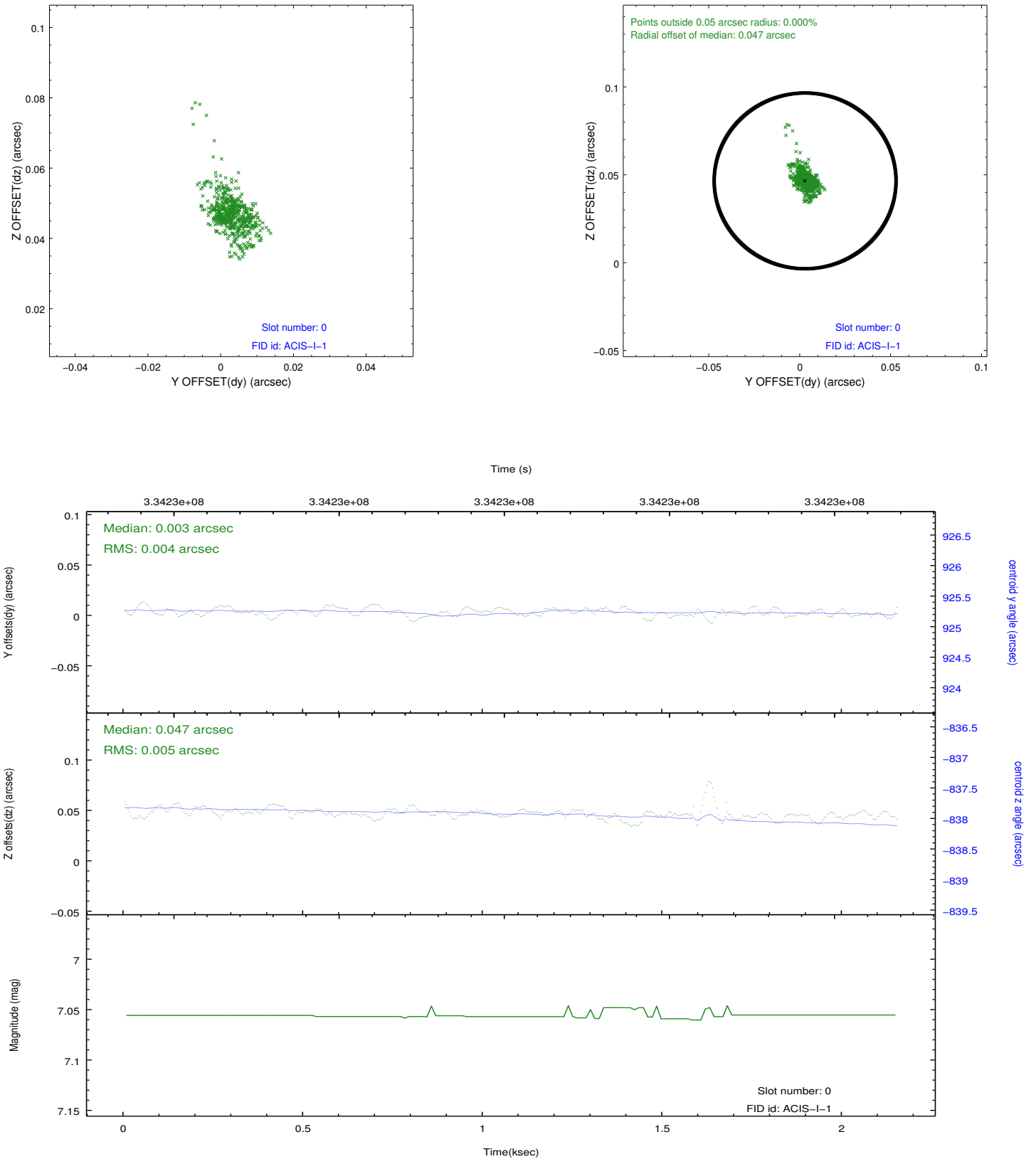


## 2.4.5 Slot 7

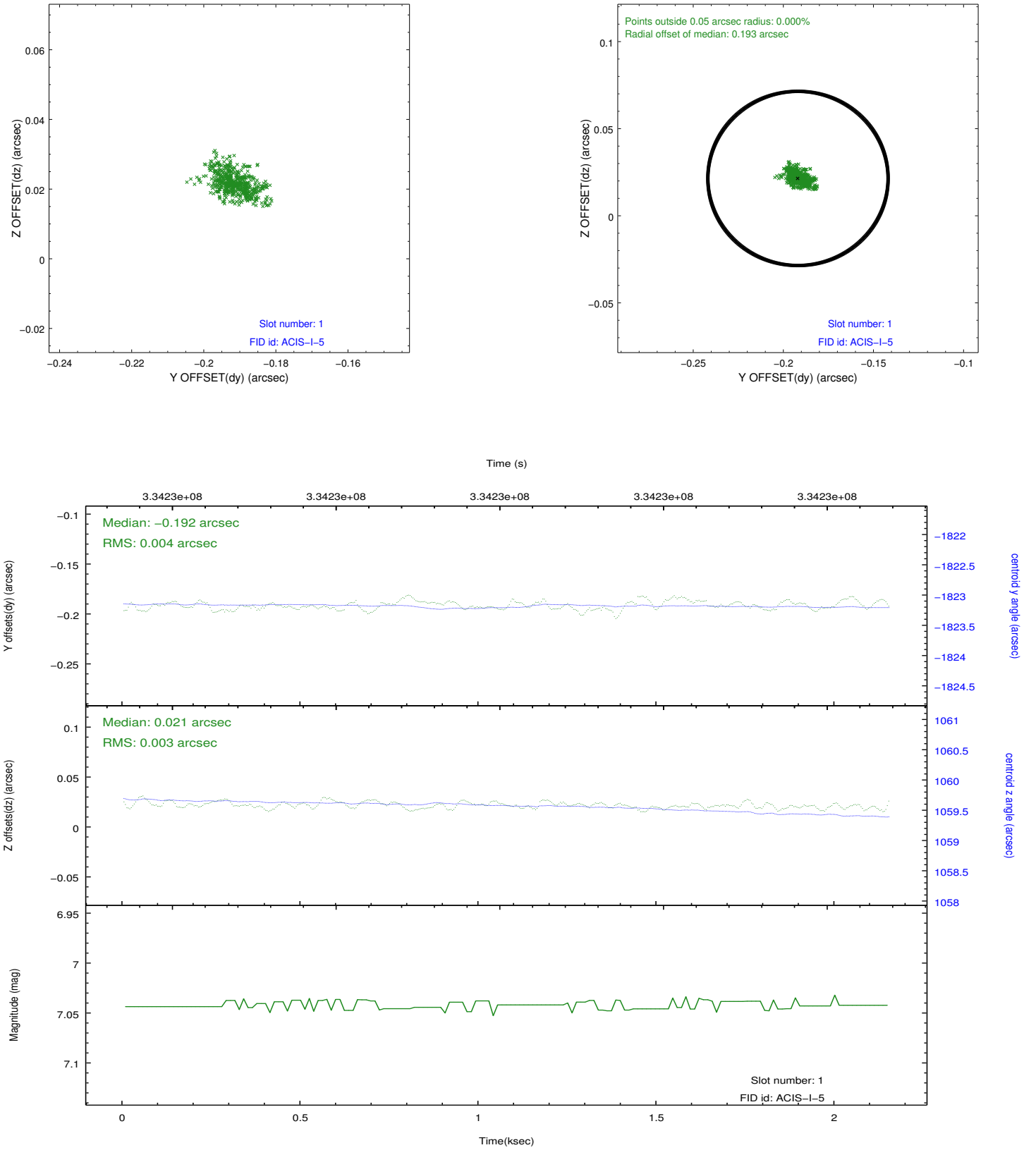


## 2.5 FID Slots

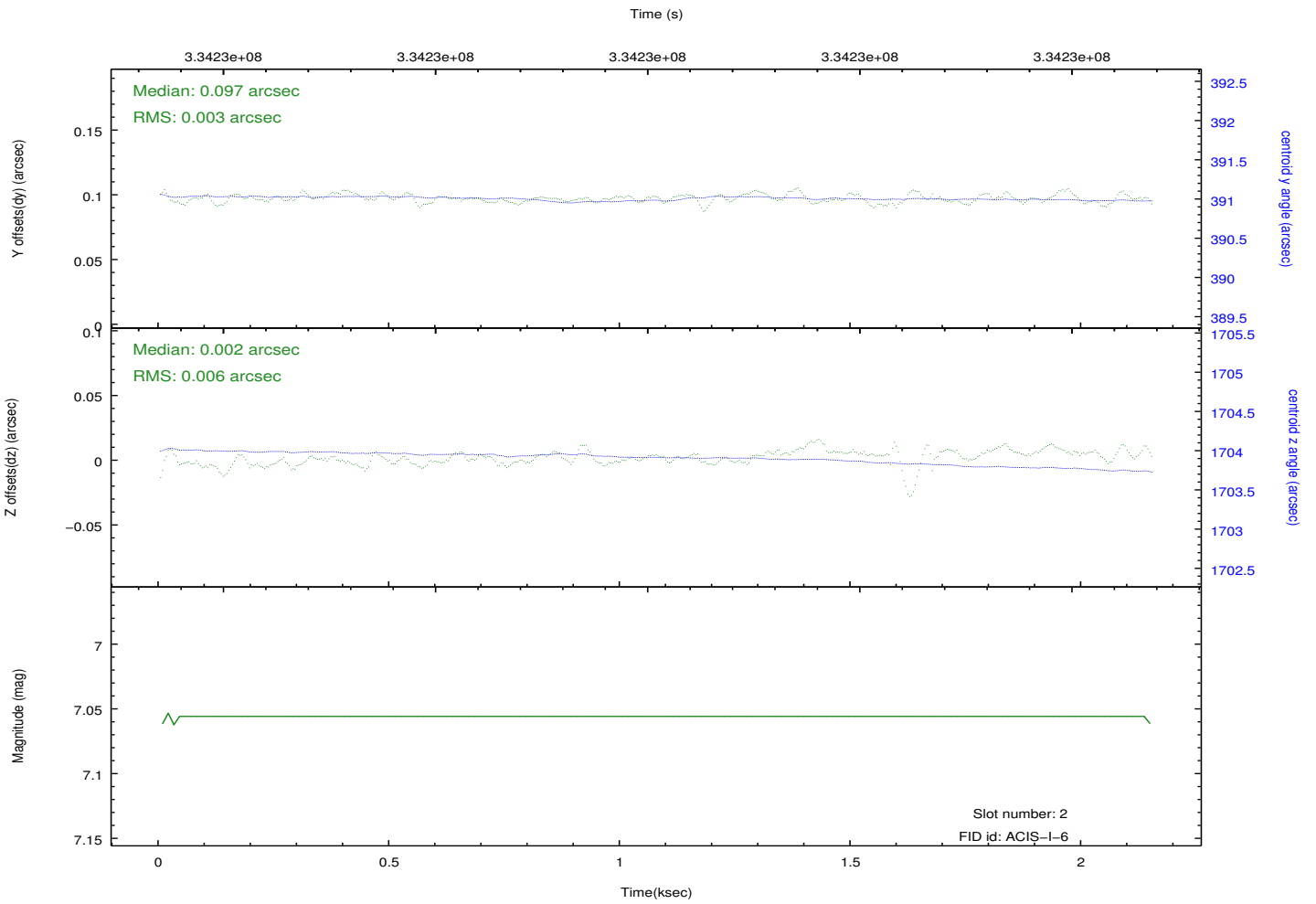
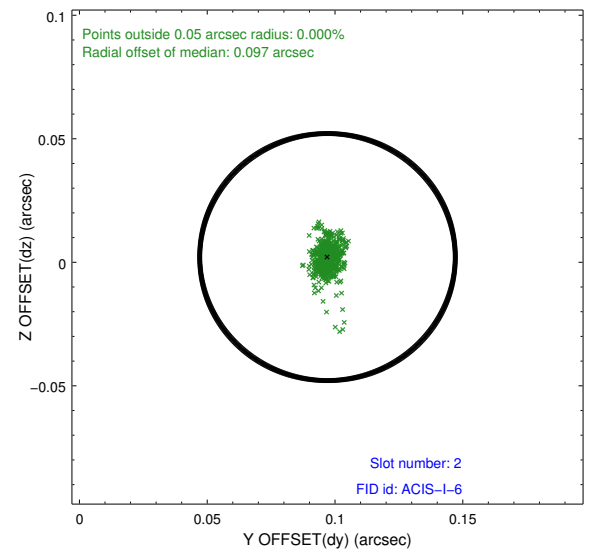
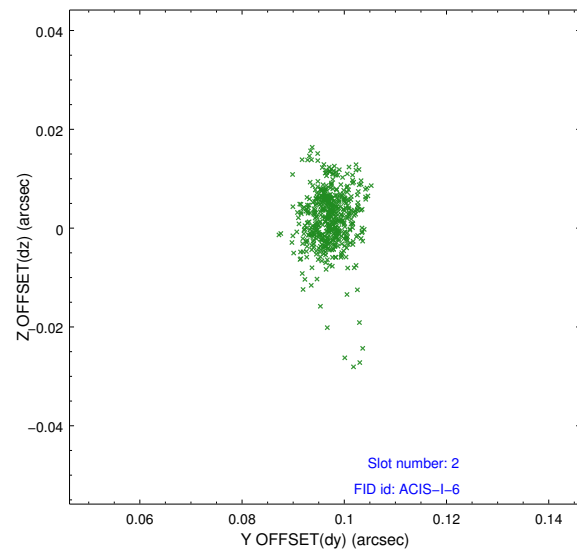
### 2.5.1 Slot 0



## 2.5.2 Slot 1



### 2.5.3 Slot 2





## A Summary

### A.1 Status

V&V Scientist	Beth Sundheim
V&V Date (YYYY-MM-DD)	2012.05.25
V&V Edition	1
V&V Disposition and Status	OK
V&V Charge Time	2.14210001

### A.2 Comments