

V&V Reference Report

L2 ASCDS Version : 8.4.4

Observation 8636 - L2 Version 2
Chandra X-Ray Center

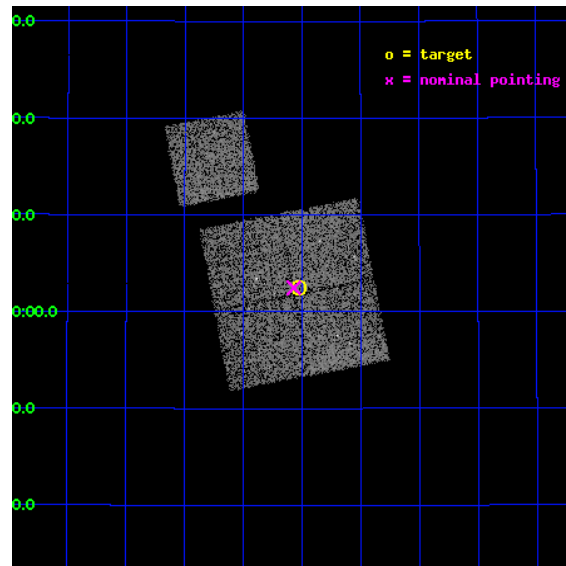
L2 Processing Date : May 5 2012

Contents

1	Front	2
2	OBI	3
2.1	OBI	3
2.1.1	Images	3
2.1.2	Bias	3
2.1.3	Parameters	4
2.1.4	Events	4
2.2	Compared Parameters	5
2.3	Aspect	6
2.4	Star Slots	9
2.4.1	Slot 3	9
2.4.2	Slot 4	10
2.4.3	Slot 5	11
2.4.4	Slot 6	12
2.4.5	Slot 7	13
2.5	FID Slots	14
2.5.1	Slot 0	14
2.5.2	Slot 1	15
2.5.3	Slot 2	16
A	Summary	17
A.1	Status	17
A.2	Comments	17

1 Front

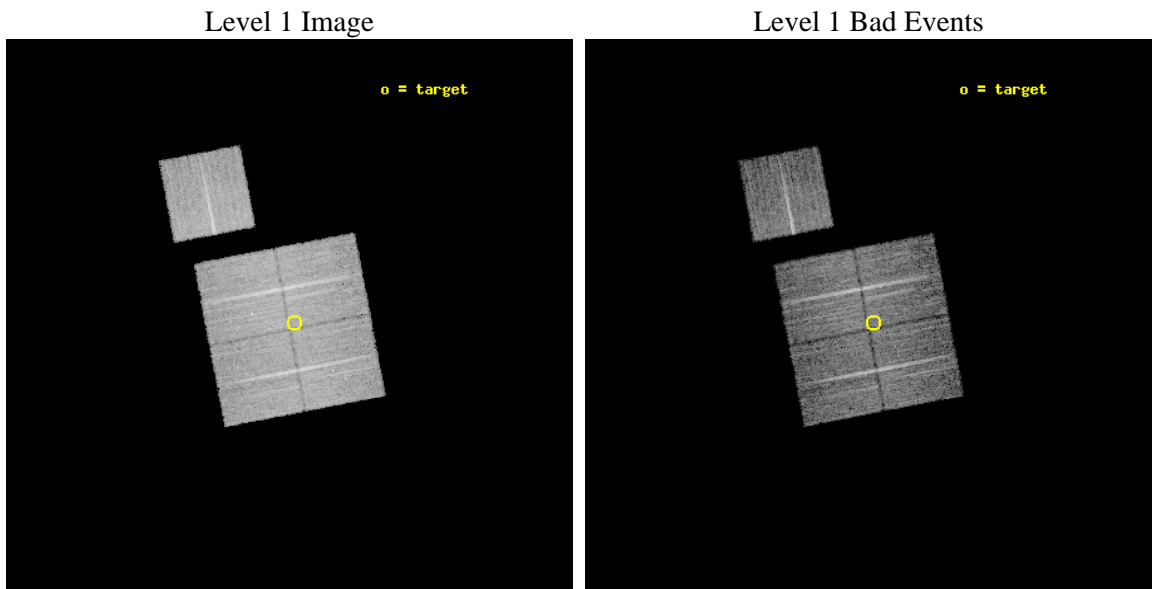
seq_num	900773	Sequence number
obs_id	8636	Observation id
title	Chandra Observations of the DEEP2 Fields	Proposal title
observer	Dr. Stephen Murray	Principal investigator
object	DEEP2 Field 2	Source name
dtcycle	0	
cycle	P	events from which exps? Prim/Second/Both
ra_targ	252.00739	Observer's specified target RA [deg]
dec_targ	35.040264	Observer's specified target Dec [deg]
ra_nom	252.01722016171	Nominal RA [deg]
dec_nom	35.041148985432	Nominal Dec [deg]
roll_nom	349.10302653912	Nominal Roll [deg]
revision	2	Processing version of data
ontime	8710.9181165099	Sum of GTIs [s]
livetime	8597.1035584331	Livetime [s]
ontime0	8710.9181463718	Sum of GTIs [s]
ontime1	8717.2000670433	Sum of GTIs [s]
ontime2	8714.0591067076	Sum of GTIs [s]
ontime3	8710.9181165099	Sum of GTIs [s]
ontime6	8704.6012325883	Sum of GTIs [s]
l2events	29731	Number of level 2 events



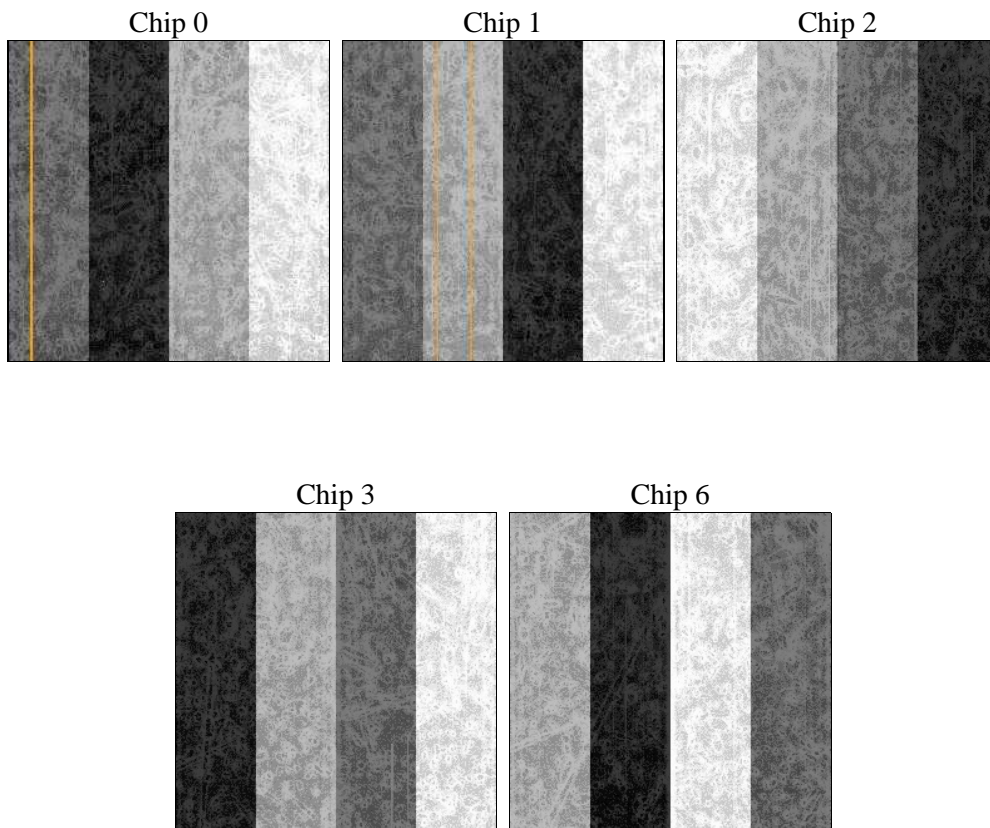
2 OBI

2.1 OBI

2.1.1 Images



2.1.2 Bias



2.1.3 Parameters

obi_num	0	Obi number	sched_exp_time	8941.000000	[s] Scheduled observation exposure time
ascdsver	8.4.4	Processing system revision	ontime	8710.9181165099	Sum of GTIs [s]
caldsver	4.4.9	 	ontime0	8710.9181463718	Sum of GTIs [s]
date	2012-05-05T05:19:50	Date and time of file creation	ontime1	8717.2000670433	Sum of GTIs [s]
revision	2	Processing version of data	ontime2	8714.0591067076	Sum of GTIs [s]
			ontime3	8710.9181165099	Sum of GTIs [s]
			ontime6	8704.6012325883	Sum of GTIs [s]
			l1events	340508	Number of level 1 events

2.1.4 Events

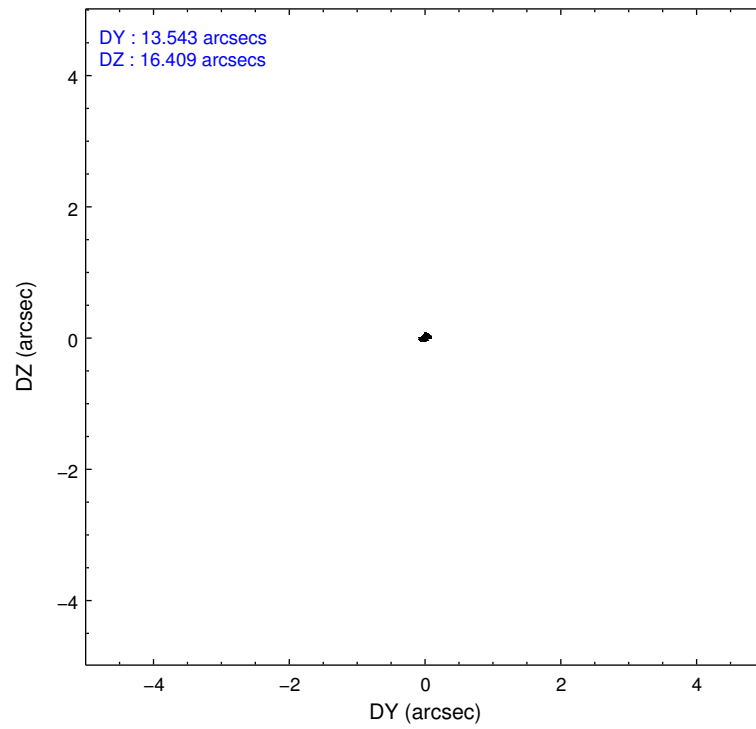
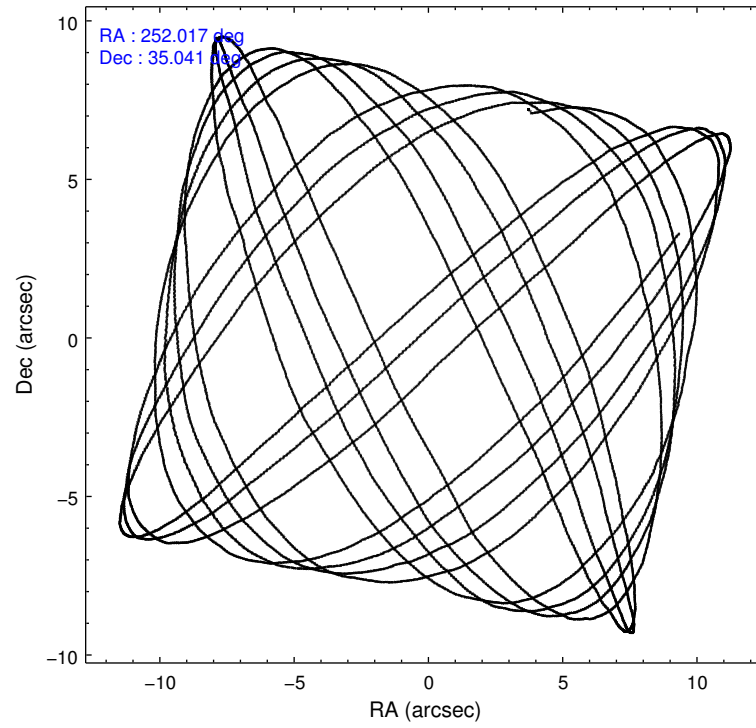
	ccd 0	ccd 1	ccd 2	ccd 3	ccd 6
level 1 events	63736	66549	73459	68690	68074
rejected events	56997	58595	66142	62072	60963
rejected %	89%	88%	90%	90%	89%

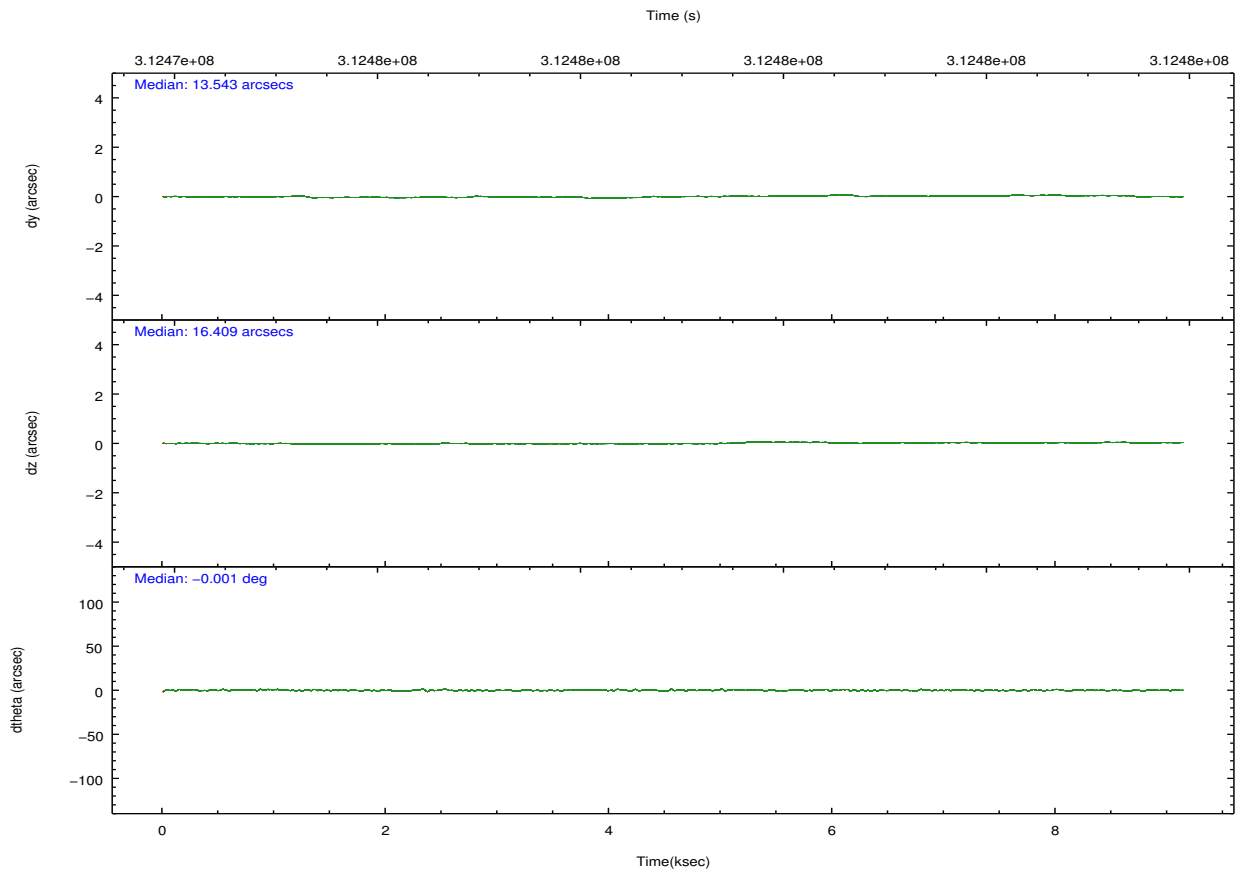
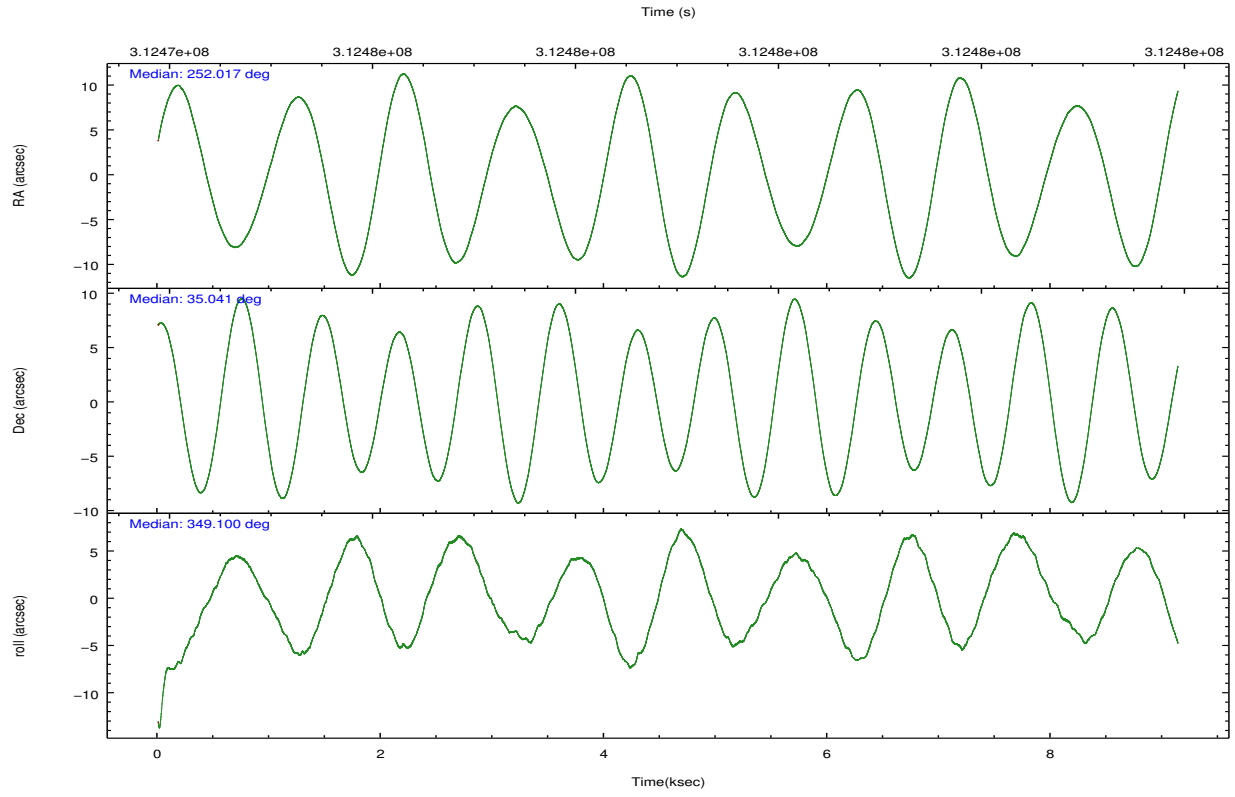
	ccd 0	ccd 1	ccd 2	ccd 3	ccd 6
grade 0 events	2373	2997	2827	2309	2408
	3%	4%	3%	3%	3%
grade 1 events	33	44	45	43	36
	0%	0%	0%	0%	0%
grade 2 events	1618	1784	1684	1475	1511
	2%	2%	2%	2%	2%
grade 3 events	760	821	736	758	767
	1%	1%	1%	1%	1%
grade 4 events	728	813	770	718	880
	1%	1%	1%	1%	1%
grade 5 events	2310	2693	2327	2841	2709
	3%	4%	3%	4%	3%
grade 6 events	1263	1551	1303	1361	1554
	1%	2%	1%	1%	2%
grade 7 events	54651	55846	63767	59185	58209
	85%	83%	86%	86%	85%

2.2 Compared Parameters

Parameter	Planned	Actual	Parameter	Planned	Actual
Instrument	ACIS	ACIS	Obspar format version number	7	7
Detector	ACIS-01236	ACIS-01236	Obspar file type	PREDICTED	ACTUAL
Grating	NONE	NONE	Obspar update status	NONE	UPDATED
Data mode	VFAINT	VFAINT	CCD I0 on	Y	Y
Observation mode	POINTING	POINTING	CCD I1 on	Y	Y
[deg] Pointing RA	251.985508	252.0172201617145	CCD I2 on	Y	Y
[deg] Pointing Dec	35.032063	35.04114898543164	CCD I3 on	Y	Y
[deg] Pointing Roll	348.912564	349.1030265391208	CCD S0 on	N	N
[mm] SIM focus pos	-0.782348	-0.7809083437167272	CCD S1 on	N	N
[mm] SIM defocus	0	0.001439871863259334	CCD S2 on	O1	Y
[mm] SIM translation stage pos	-233.592463	-233.5874344608287	CCD S3 on	N	N
[mm] SIM translation stage offset	0	-0.005018542100998502	CCD S4 on	N	N
[s] Observation start time (MET)	312474542.184000	312474166.65498	CCD S5 on	N	N
Observation start date	2007-11-26T14:27:57	2007-11-26T14:22:46	Number of optional ACIS chips dropped	0	0
[s] Observation end time (MET)	312483483.184000	312483617.15544	On-chip summing requested	N	N
Observation end date	2007-11-26T16:56:58	2007-11-26T17:00:17	Subarray requested	NONE	NONE
Read mode	TIMED	TIMED	Alternating exposures requested	N	N
			[s] Primary exposure time	0.000000	3.1

2.3 Aspect



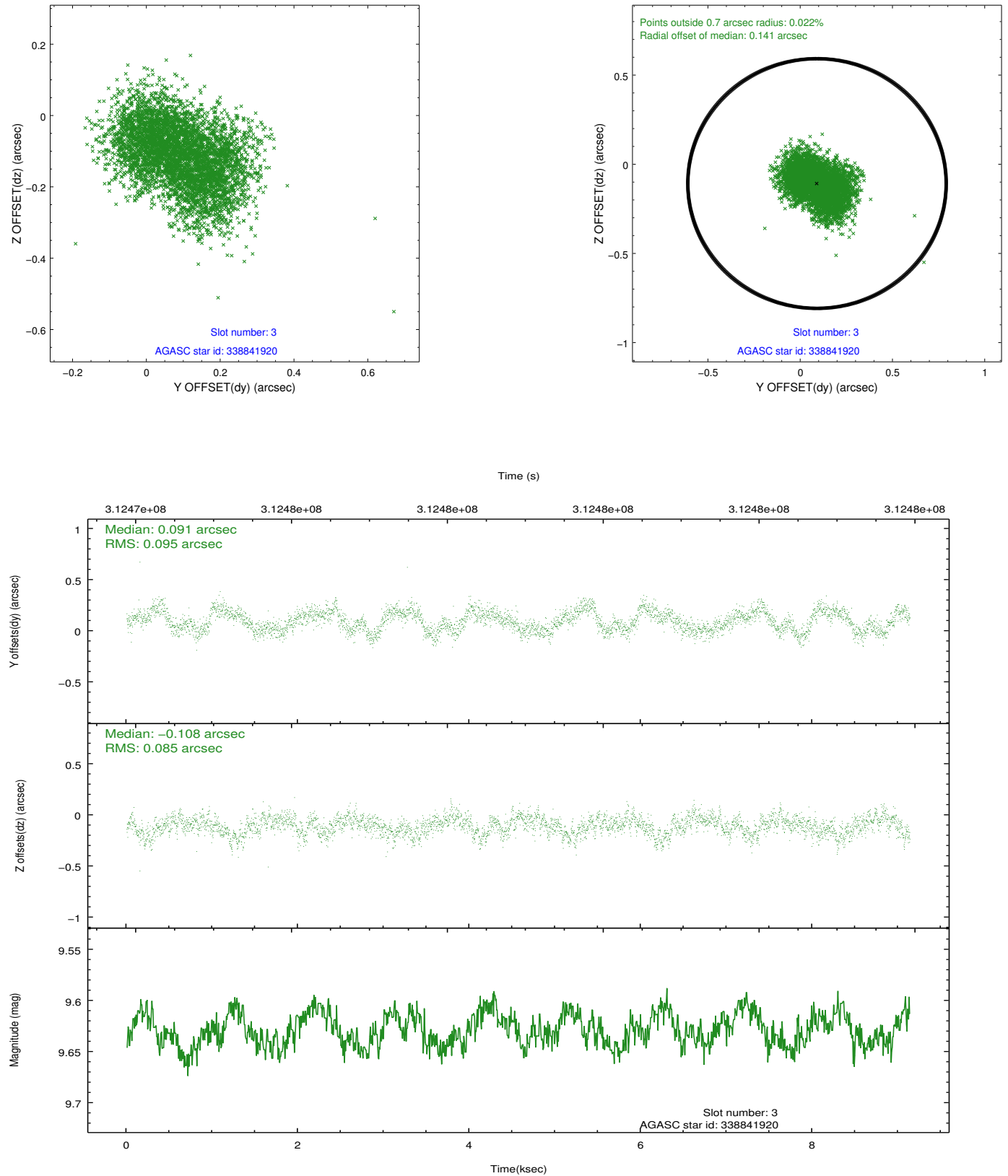


Slot Statistics

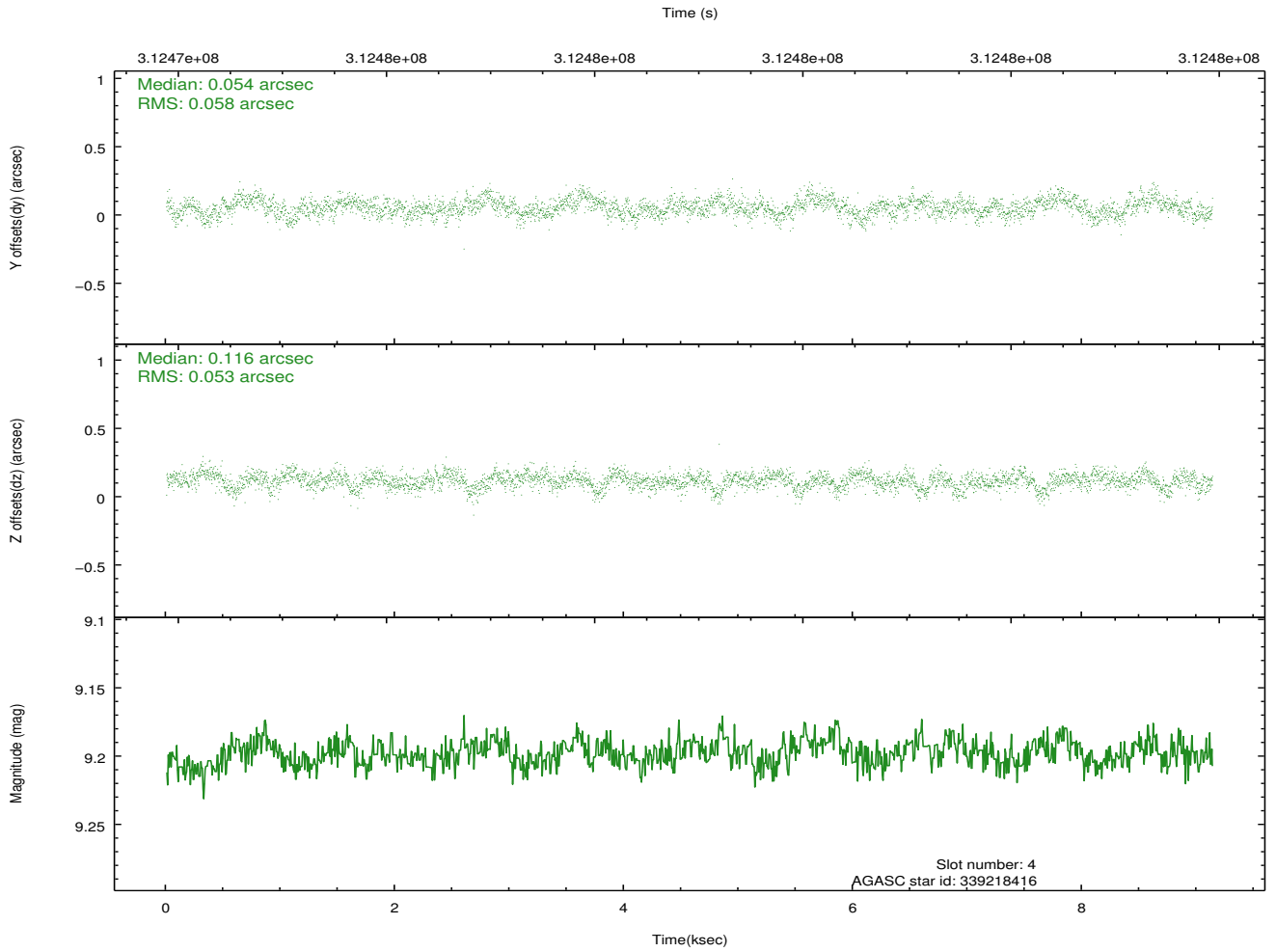
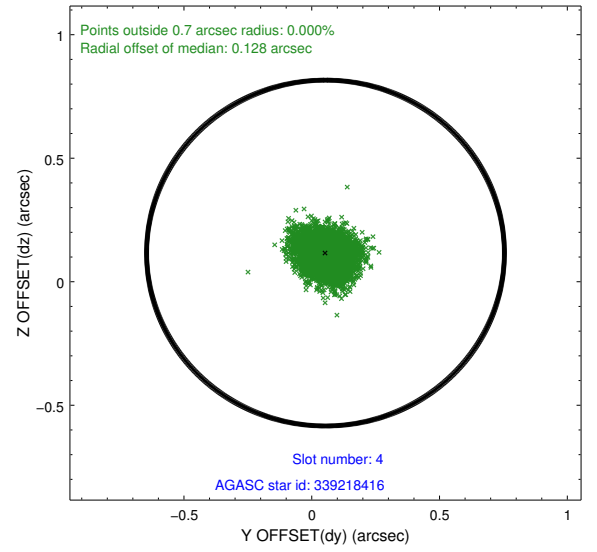
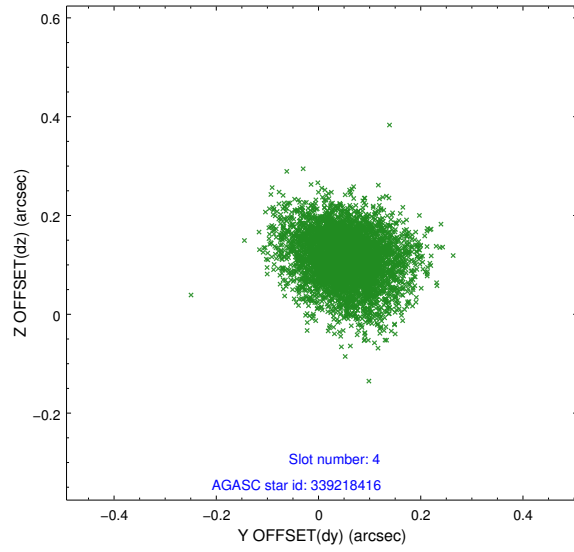
slot	status	id	mag	n_pts	med_dy	med_dz	dr1	dr2	ra	dec	mean_y	mean_z
0	FID	ACIS-I-1	7.23	2229	-0.005	-0.088	0.009	0.016	0.000000	0.000000	925.94	-840.15
1	FID	ACIS-I-4	7.15	2229	0.164	0.087	0.007	0.013	0.000000	0.000000	2146.51	1059.52
2	FID	ACIS-I-5	7.22	2228	-0.257	0.072	0.007	0.012	0.000000	0.000000	-1821.52	1058.08
3	GUIDE	338841920	9.63	4453	0.091	-0.108	0.138	0.211	251.583822	34.717471	-948.72	-1337.69
4	GUIDE	339218416	9.20	4451	0.054	0.116	0.083	0.137	251.185123	35.007242	-2300.56	-532.81
5	GUIDE	340397848	8.92	4448	0.041	-0.015	0.067	0.107	252.880784	35.553189	2209.91	2357.06
6	GUIDE	340401160	9.34	4439	-0.115	0.024	0.086	0.138	252.460112	35.243739	1222.77	1020.15
7	GUIDE	340406200	6.69	4456	-0.072	-0.012	0.060	0.098	252.267621	34.956301	869.42	-105.85

2.4 Star Slots

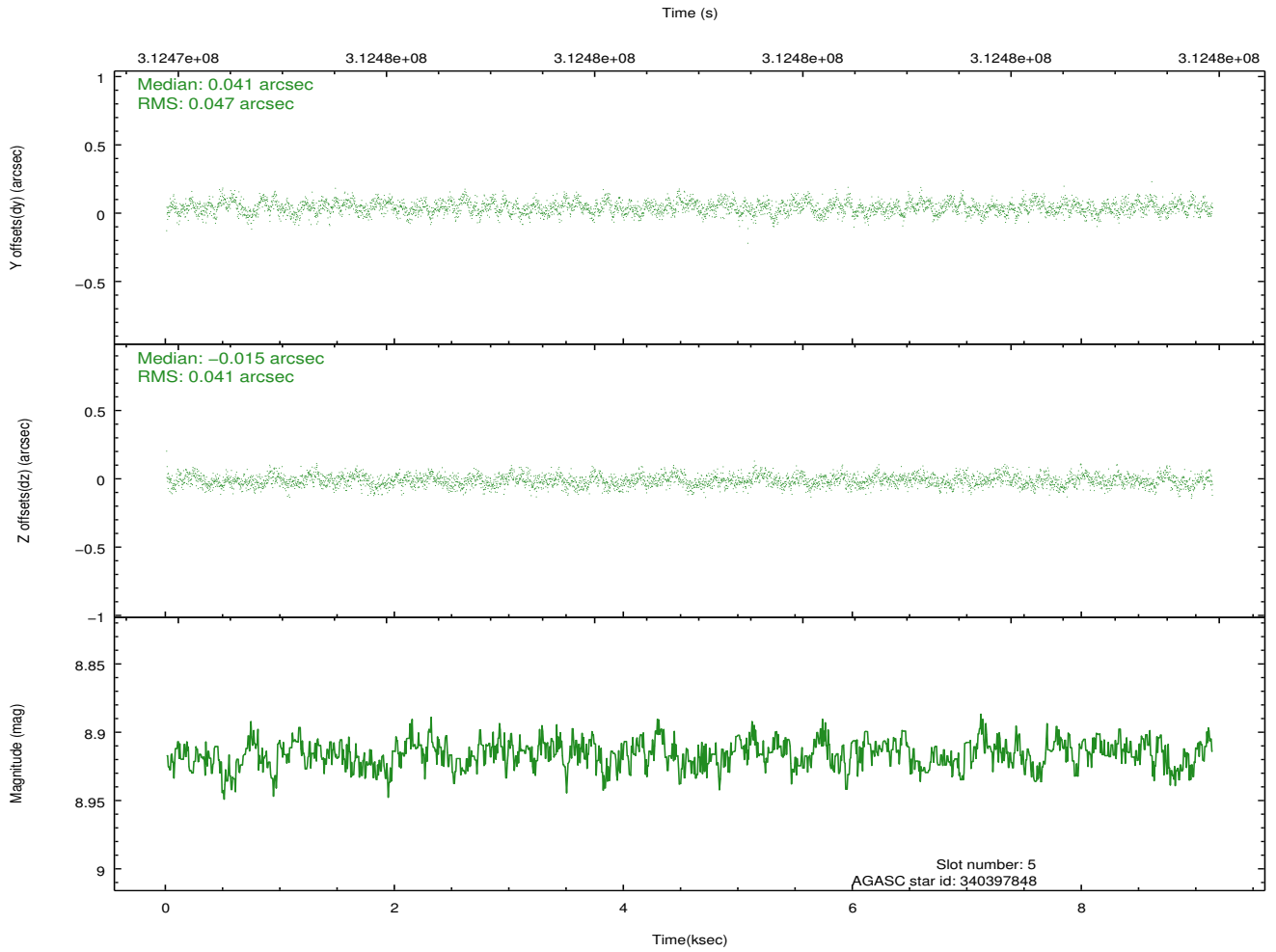
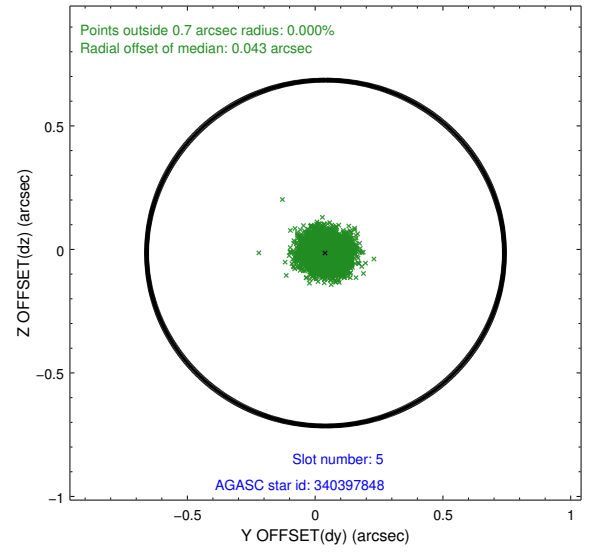
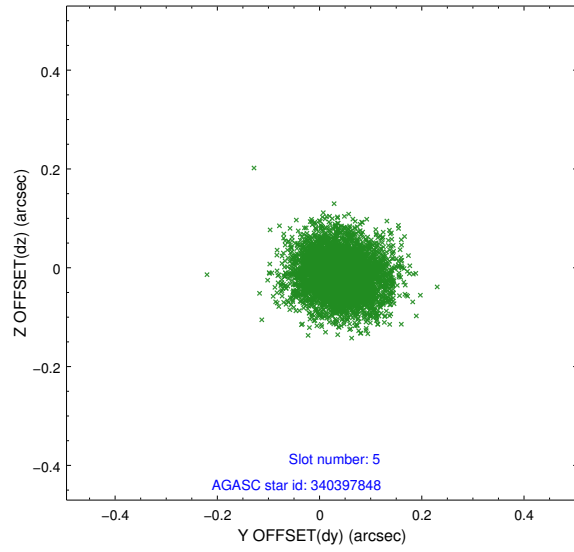
2.4.1 Slot 3



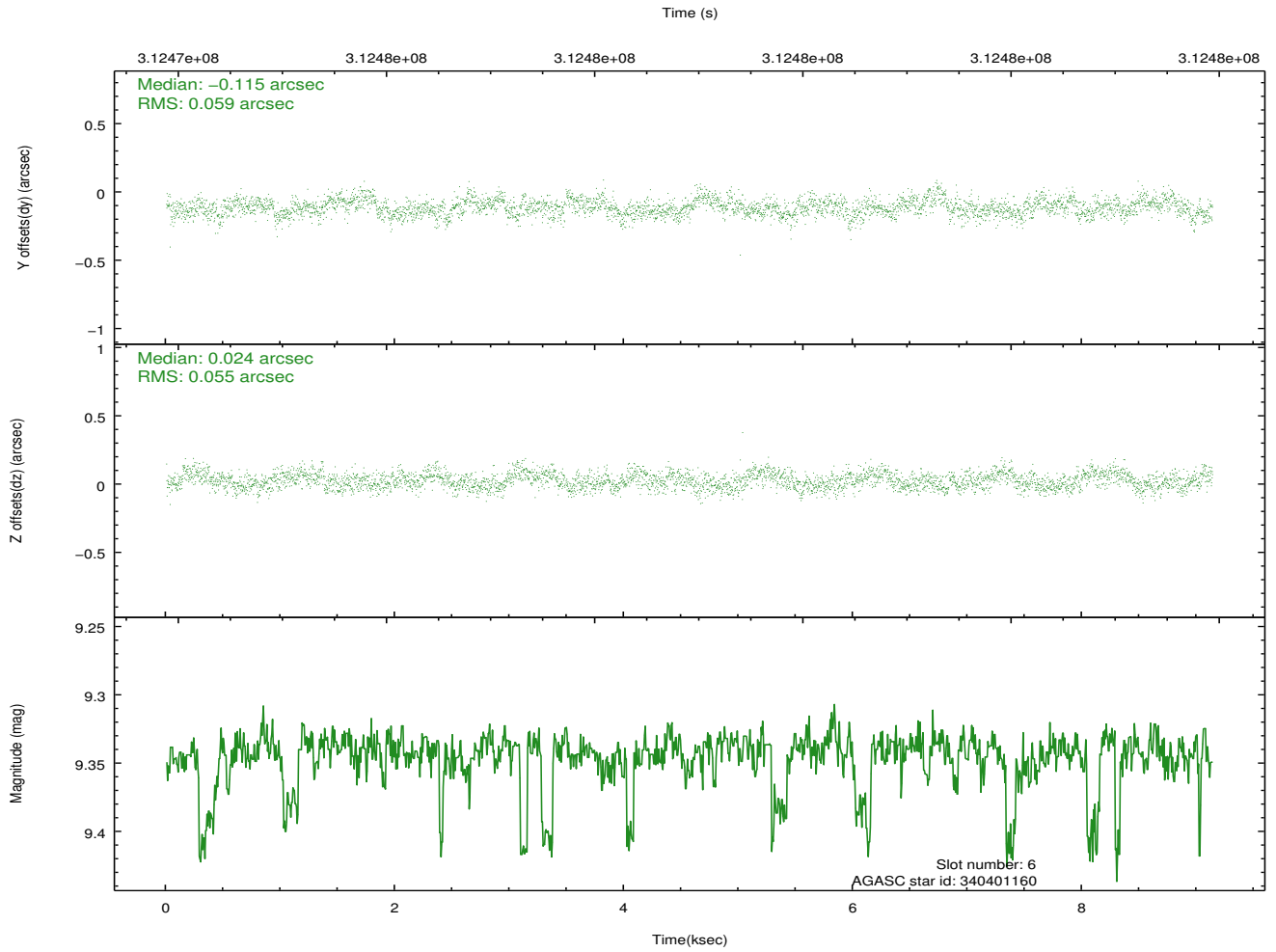
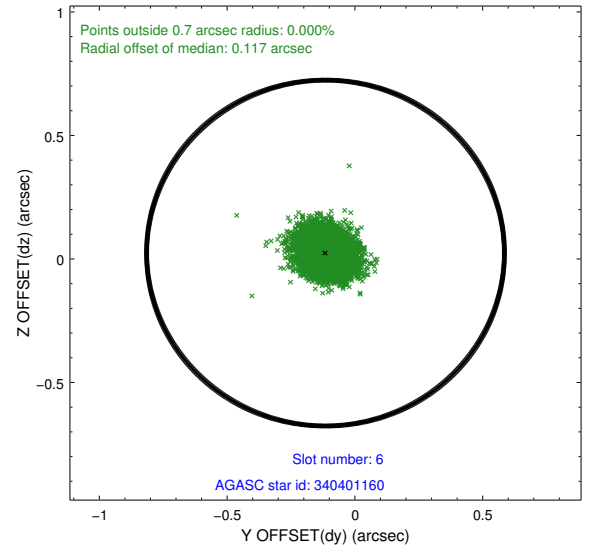
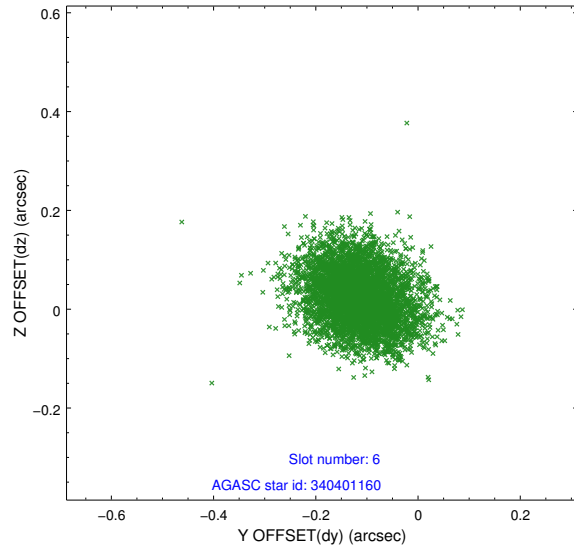
2.4.2 Slot 4



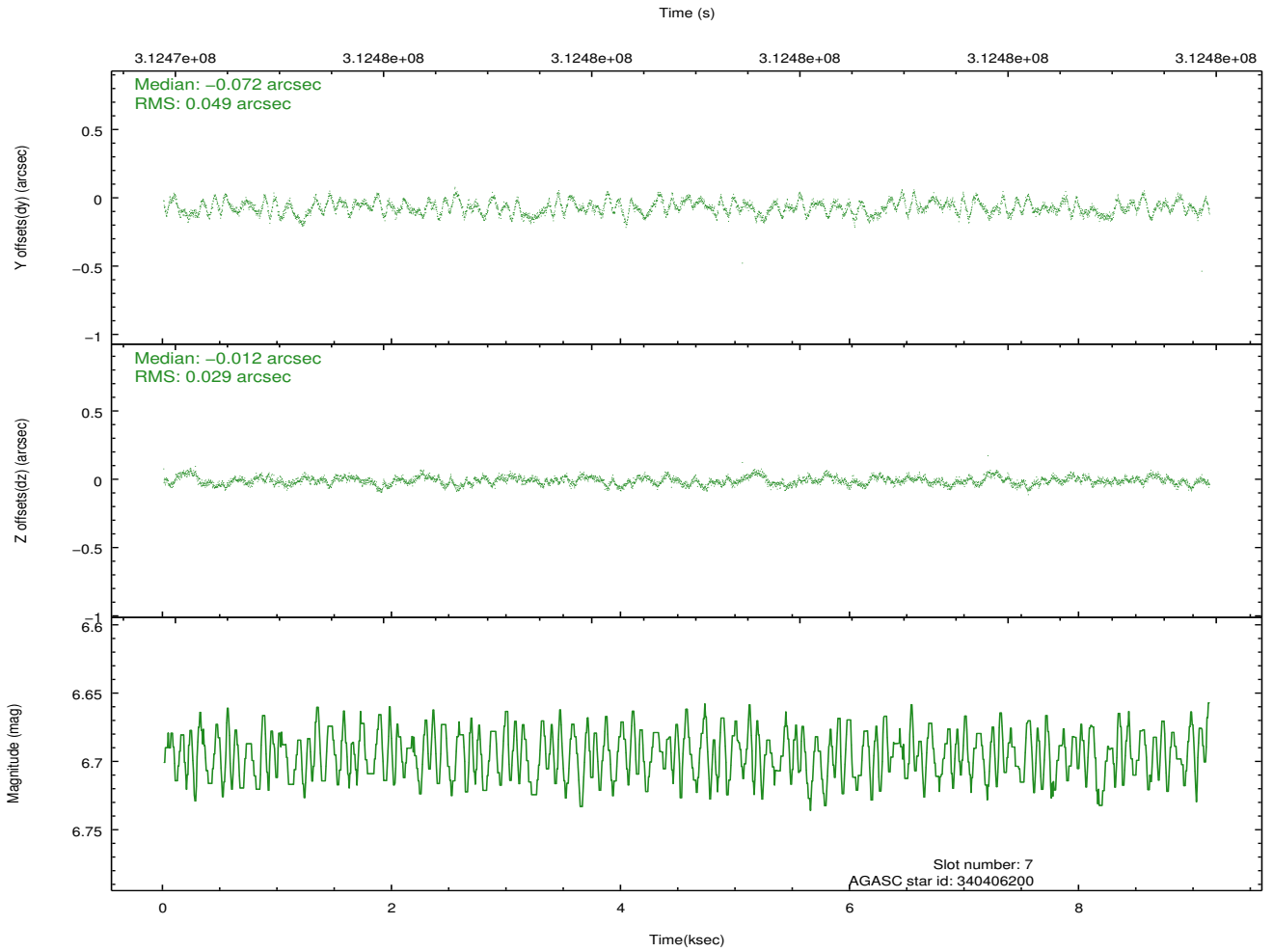
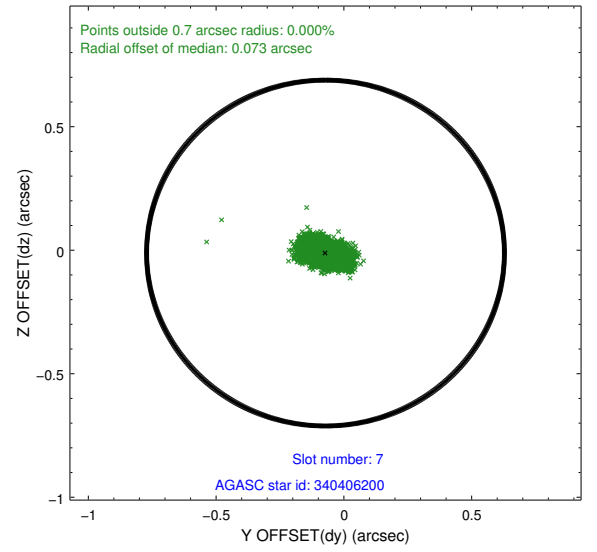
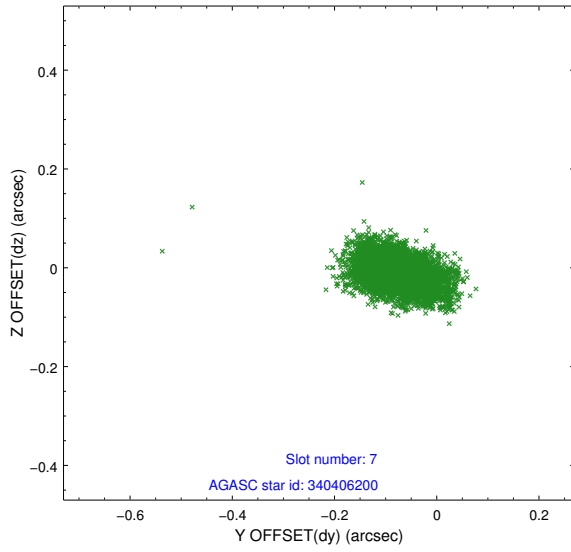
2.4.3 Slot 5



2.4.4 Slot 6

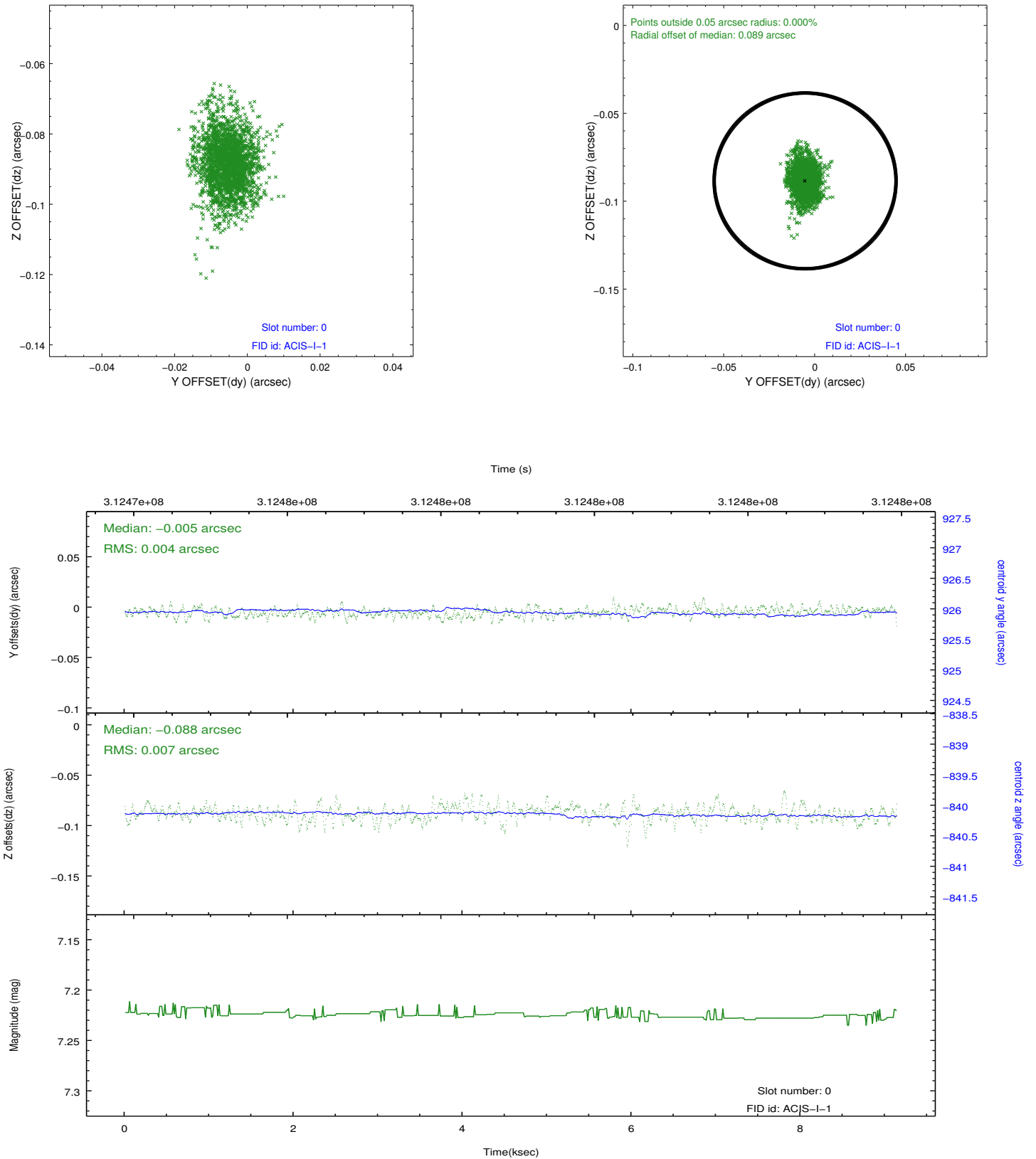


2.4.5 Slot 7

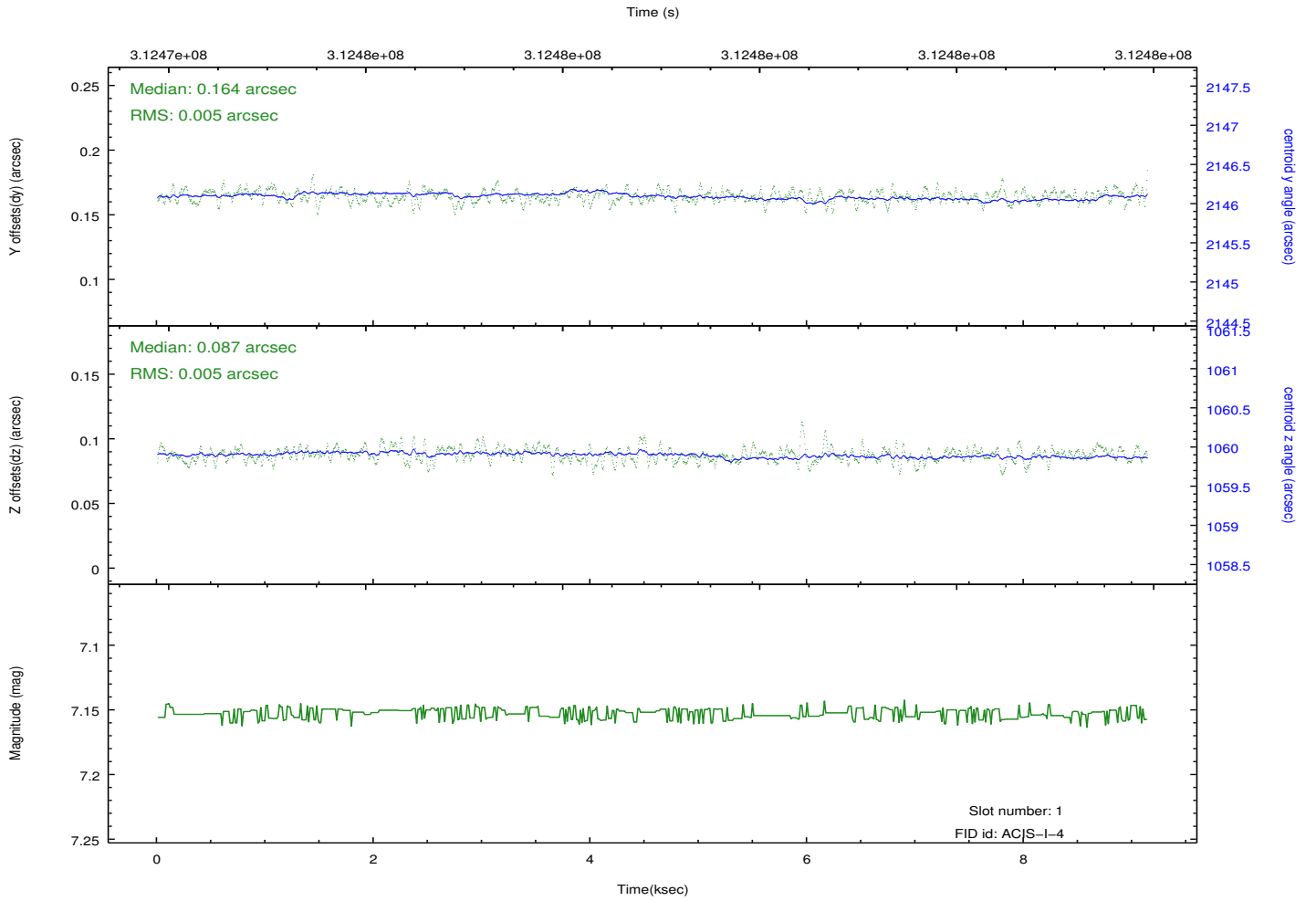
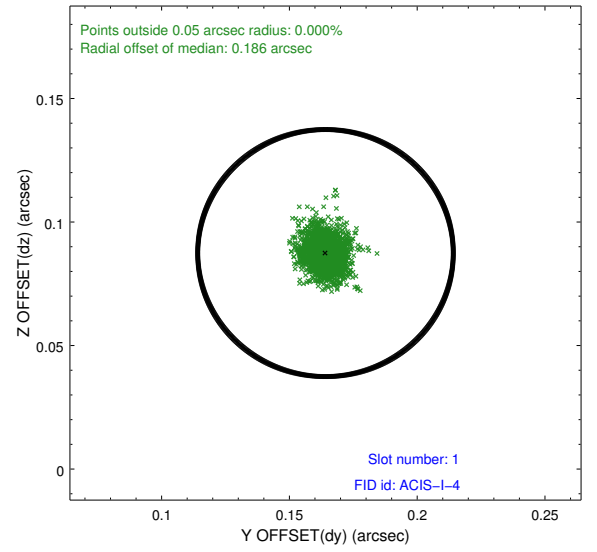
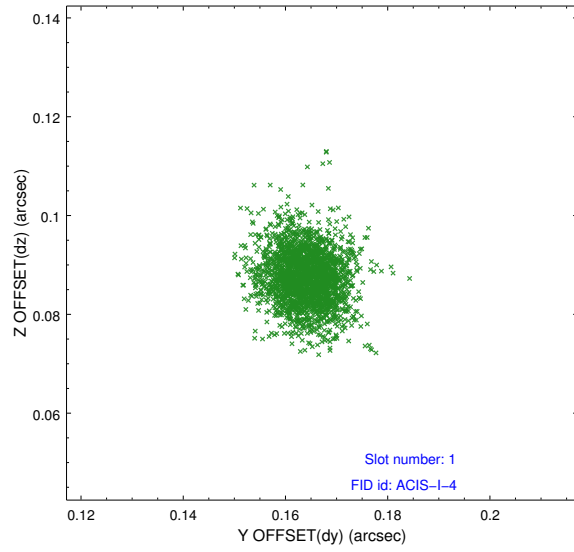


2.5 FID Slots

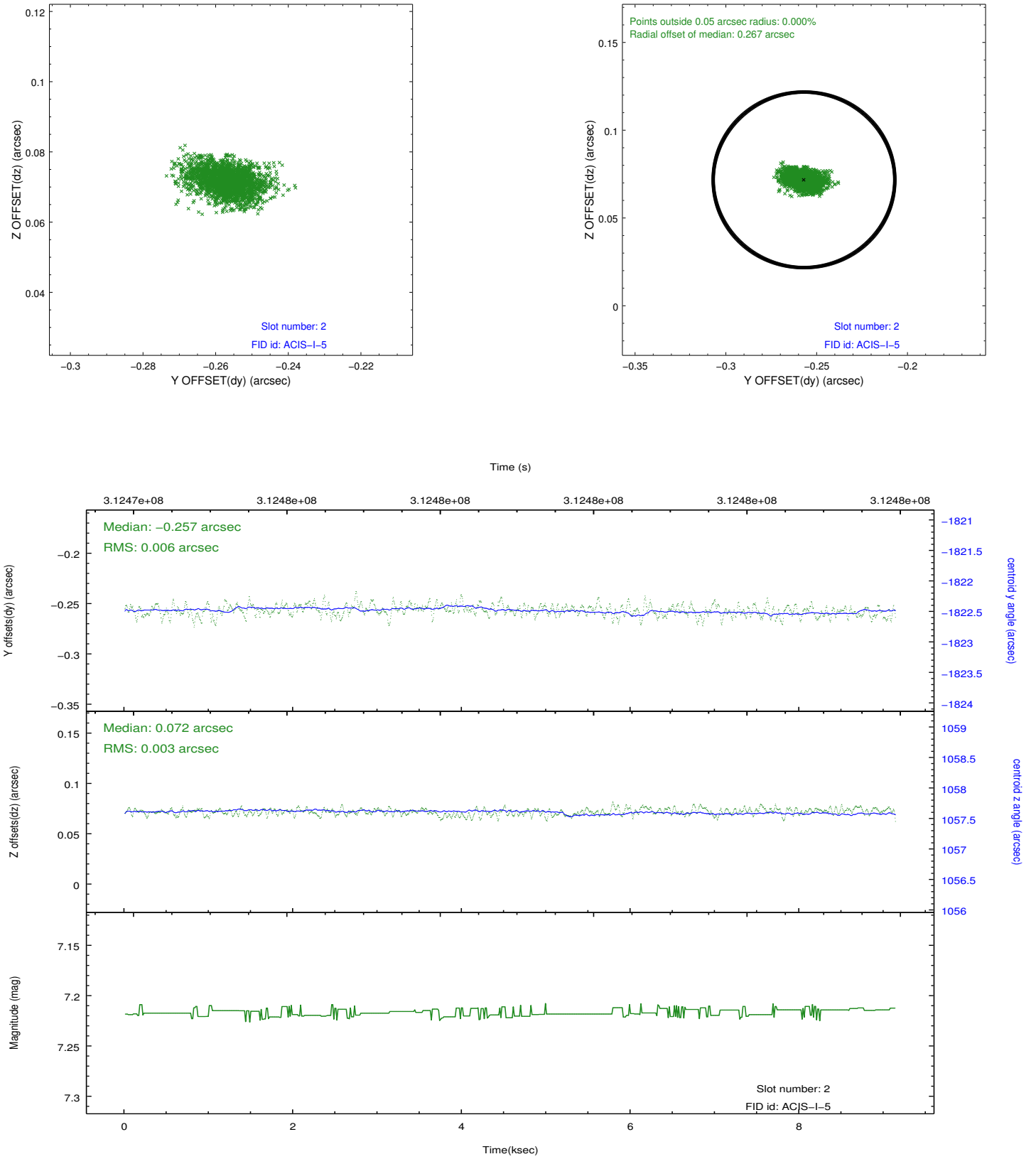
2.5.1 Slot 0



2.5.2 Slot 1



2.5.3 Slot 2



A Summary

A.1 Status

V&V Scientist	Jen Lauer
V&V Date (YYYY-MM-DD)	2012.05.07
V&V Edition	1
V&V Disposition and Status	OK
V&V Charge Time	8.71091811

A.2 Comments