

V&V Reference Report

L2 ASCDS Version : 8.4.4

Observation 8621 - L2 Version 2
Chandra X-Ray Center

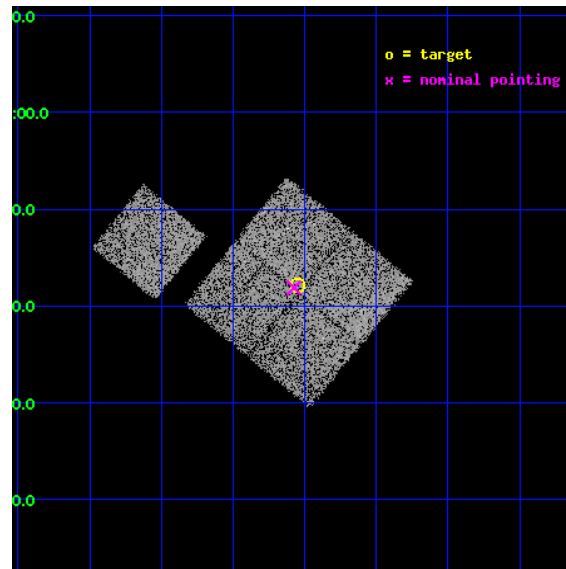
L2 Processing Date : May 5 2012

Contents

1	Front	2
2	OBI	3
2.1	OBI	3
2.1.1	Images	3
2.1.2	Bias	3
2.1.3	Parameters	4
2.1.4	Events	4
2.2	Compared Parameters	5
2.3	Aspect	6
2.4	Star Slots	9
2.4.1	Slot 3	9
2.4.2	Slot 4	10
2.4.3	Slot 5	11
2.4.4	Slot 6	12
2.4.5	Slot 7	13
2.5	FID Slots	14
2.5.1	Slot 0	14
2.5.2	Slot 1	15
2.5.3	Slot 2	16
A	Summary	17
A.1	Status	17
A.2	Comments	17

1 Front

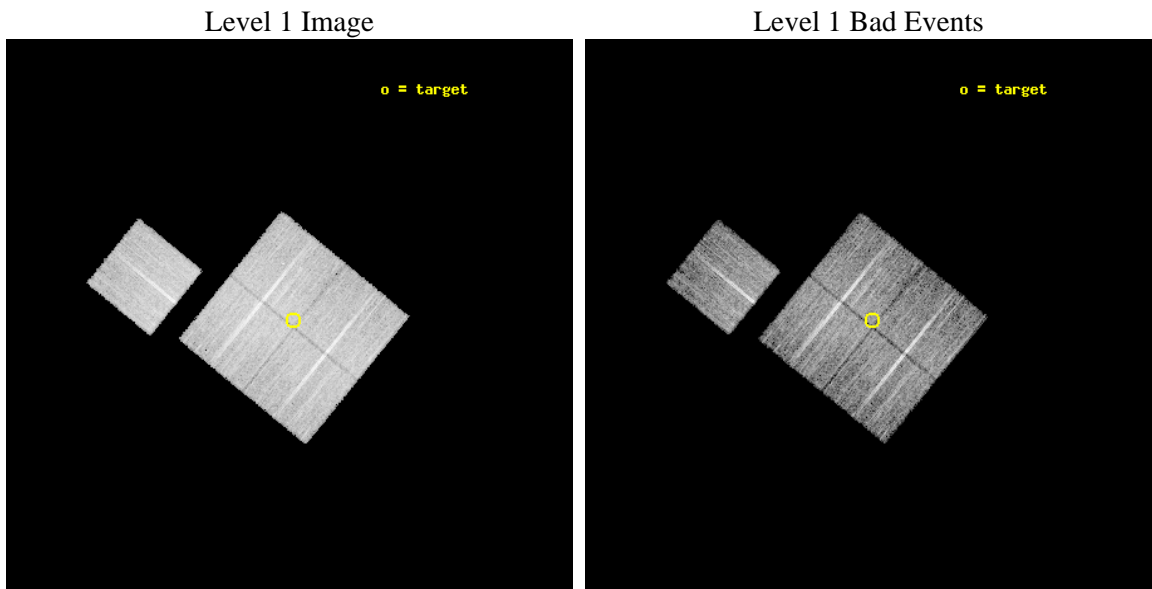
seq_num	900758	Sequence number
obs_id	8621	Observation id
title	Chandra Observations of the DEEP2 Fields	Proposal title
observer	Dr. Stephen Murray	Principal investigator
object	DEEP2 Field 4	Source name
dtcycle	0	
cycle	P	events from which exps? Prim/Second/Both
ra_targ	36.887129	Observer's specified target RA [deg]
dec_targ	0.702504	Observer's specified target Dec [deg]
ra_nom	36.893913278204	Nominal RA [deg]
dec_nom	0.69803638001756	Nominal Dec [deg]
roll_nom	309.23861206743	Nominal Roll [deg]
revision	2	Processing version of data
ontime	9185.3000706434	Sum of GTIs [s]
livetime	9065.2873631009	Livetime [s]
ontime0	9182.1590803266	Sum of GTIs [s]
ontime1	9182.1590703726	Sum of GTIs [s]
ontime2	9182.1590604186	Sum of GTIs [s]
ontime3	9185.3000706434	Sum of GTIs [s]
ontime6	9185.3000706434	Sum of GTIs [s]
l2events	31099	Number of level 2 events



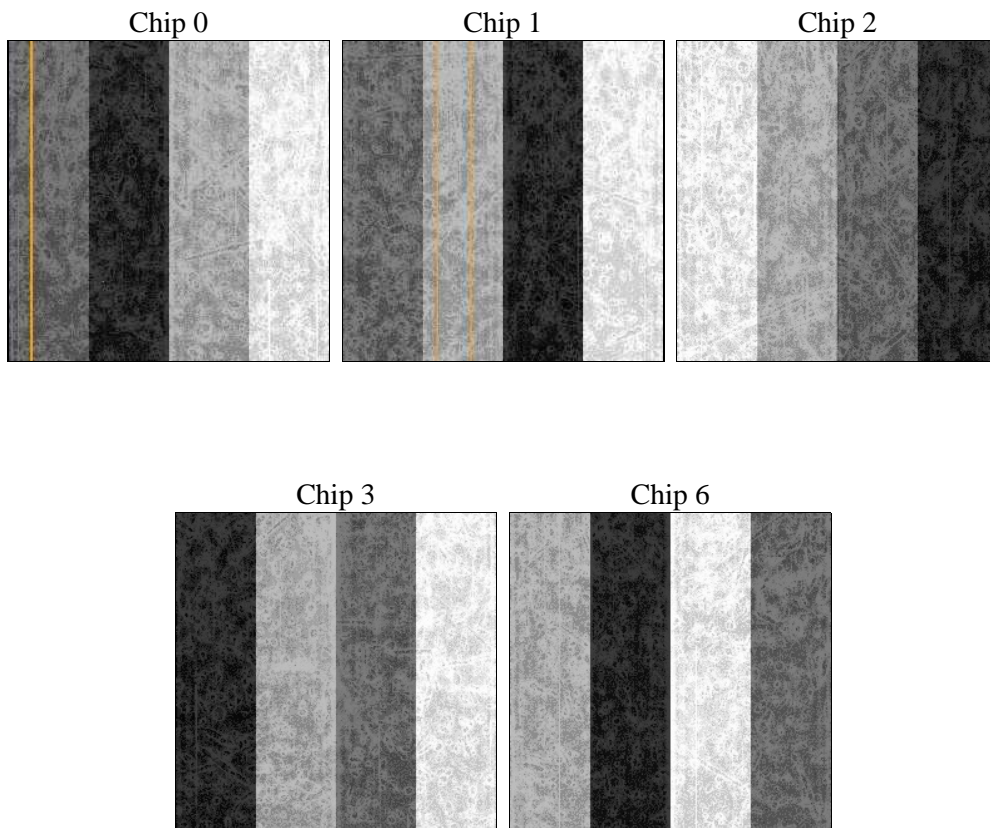
2 OBI

2.1 OBI

2.1.1 Images



2.1.2 Bias



2.1.3 Parameters

obi_num	0	Obi number	sched_exp_time	9000.000000	[s] Scheduled observation exposure time
ascdsver	8.4.4	Processing system revision	ontime	9185.3000706434	Sum of GTIs [s]
caldsver	4.4.9	 	ontime0	9182.1590803266	Sum of GTIs [s]
date	2012-05-05T06:36:30	Date and time of file creation	ontime1	9182.1590703726	Sum of GTIs [s]
revision	2	Processing version of data	ontime2	9182.1590604186	Sum of GTIs [s]
			ontime3	9185.3000706434	Sum of GTIs [s]
			ontime6	9185.3000706434	Sum of GTIs [s]
			l1events	372101	Number of level 1 events

2.1.4 Events

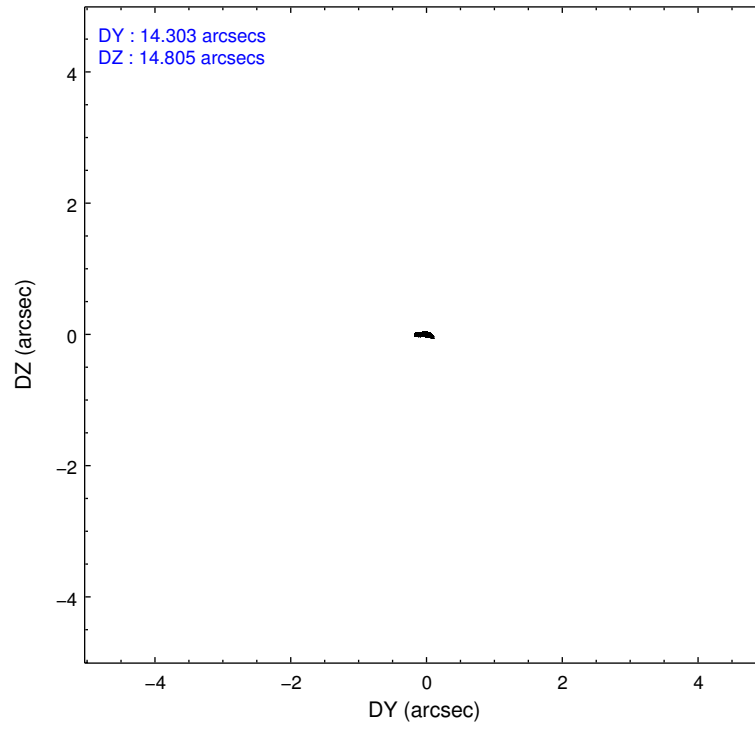
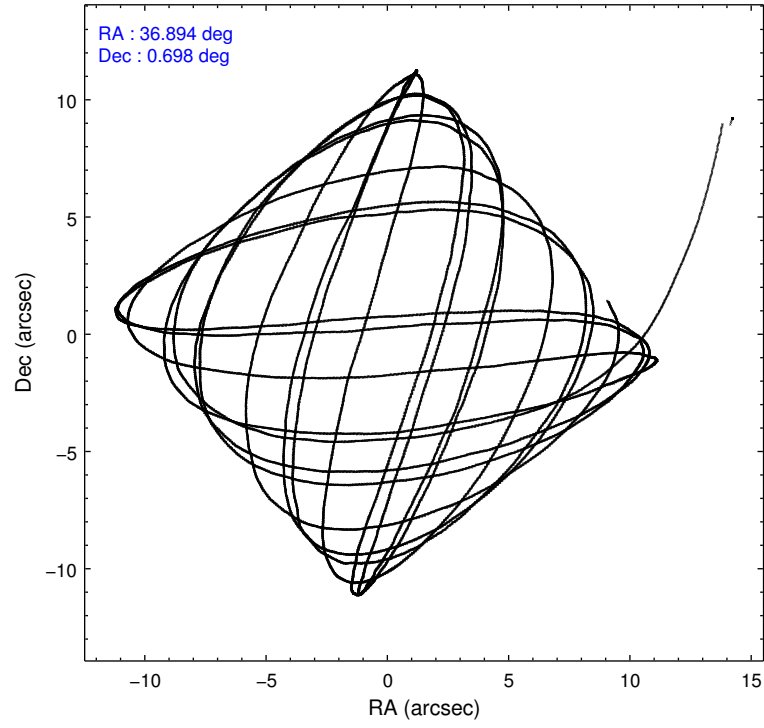
	ccd 0	ccd 1	ccd 2	ccd 3	ccd 6
level 1 events	70535	70413	80506	75001	75646
rejected events	63261	62084	73418	67819	68053
rejected %	89%	88%	91%	90%	89%

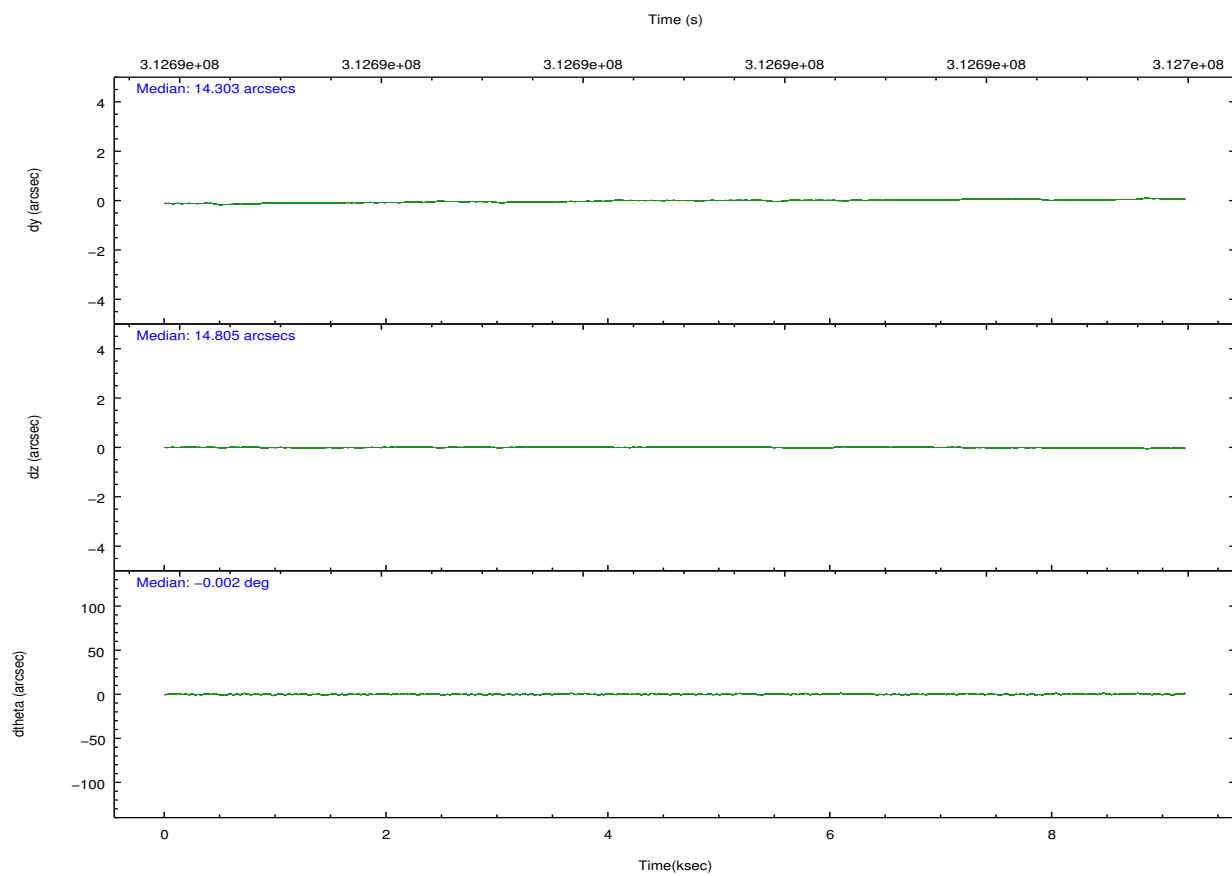
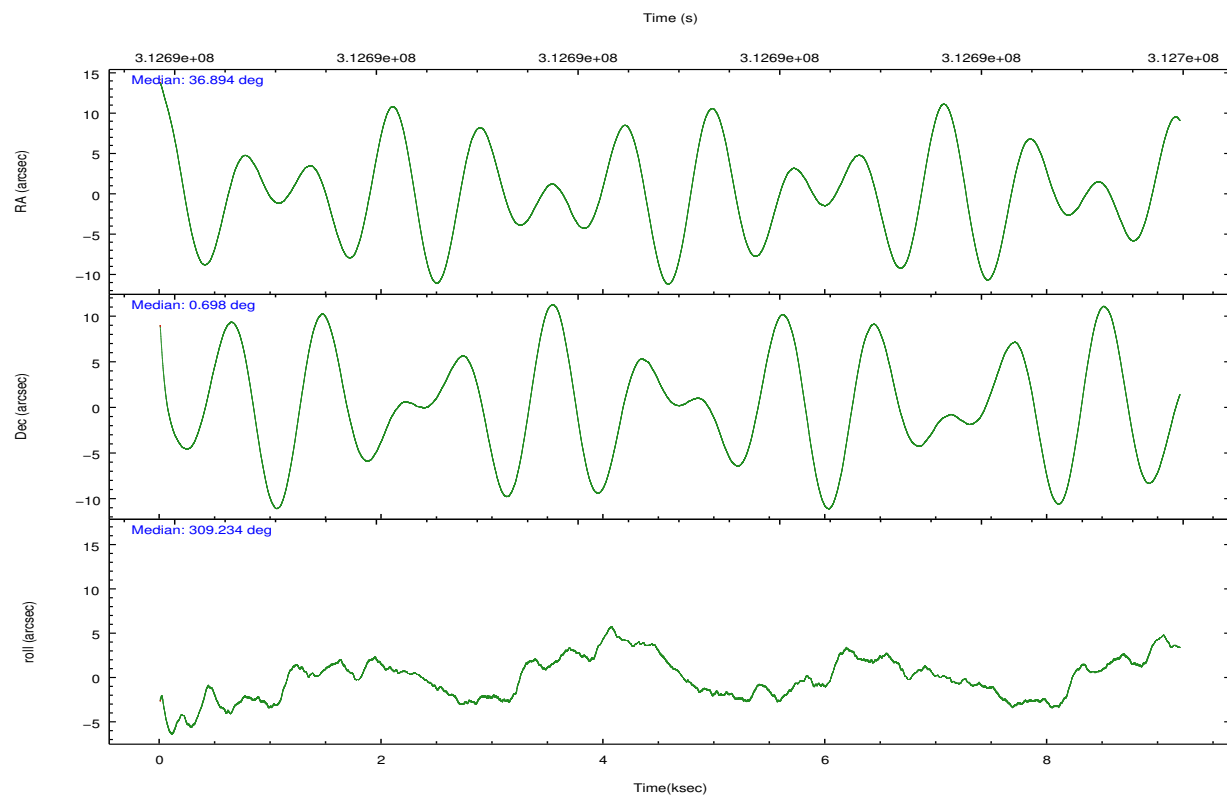
	ccd 0	ccd 1	ccd 2	ccd 3	ccd 6
grade 0 events	2497	3088	2502	2617	2569
	3%	4%	3%	3%	3%
grade 1 events	50	44	36	43	39
	0%	0%	0%	0%	0%
grade 2 events	1807	1959	1706	1614	1711
	2%	2%	2%	2%	2%
grade 3 events	835	866	786	822	849
	1%	1%	0%	1%	1%
grade 4 events	775	893	796	806	876
	1%	1%	0%	1%	1%
grade 5 events	2652	2972	2445	3091	2894
	3%	4%	3%	4%	3%
grade 6 events	1475	1680	1401	1428	1697
	2%	2%	1%	1%	2%
grade 7 events	60444	58911	70834	64580	65011
	85%	83%	87%	86%	85%

2.2 Compared Parameters

Parameter	Planned	Actual	Parameter	Planned	Actual
Instrument	ACIS	ACIS	Obspar format version number	7	7
Detector	ACIS-01236	ACIS-01236	Obspar file type	PREDICTED	ACTUAL
Grating	NONE	NONE	Obspar update status	NONE	UPDATED
Data mode	VFAINT	VFAINT	CCD I0 on	Y	Y
Observation mode	POINTING	POINTING	CCD I1 on	Y	Y
[deg] Pointing RA	36.868119	36.89391327820363	CCD I2 on	Y	Y
[deg] Pointing Dec	0.707694	0.6980363800175595	CCD I3 on	Y	Y
[deg] Pointing Roll	309.030240	309.2386120674311	CCD S0 on	N	N
[mm] SIM focus pos	-0.782348	-0.7809083437167272	CCD S1 on	N	N
[mm] SIM defocus	0	0.001439871863259334	CCD S2 on	O1	Y
[mm] SIM translation stage pos	-233.592463	-233.5874344608287	CCD S3 on	N	N
[mm] SIM translation stage offset	0	-0.005018542100998502	CCD S4 on	N	N
[s] Observation start time (MET)	312686505.184000	312685438.64019	CCD S5 on	N	N
Observation start date	2007-11-29T01:20:40	2007-11-29T01:03:58	Number of optional ACIS chips dropped	0	0
[s] Observation end time (MET)	312695505.184000	312695639.44068	On-chip summing requested	N	N
Observation end date	2007-11-29T03:50:40	2007-11-29T03:53:59	Subarray requested	NONE	NONE
Read mode	TIMED	TIMED	Alternating exposures requested	N	N
			[s] Primary exposure time	0.000000	3.1

2.3 Aspect



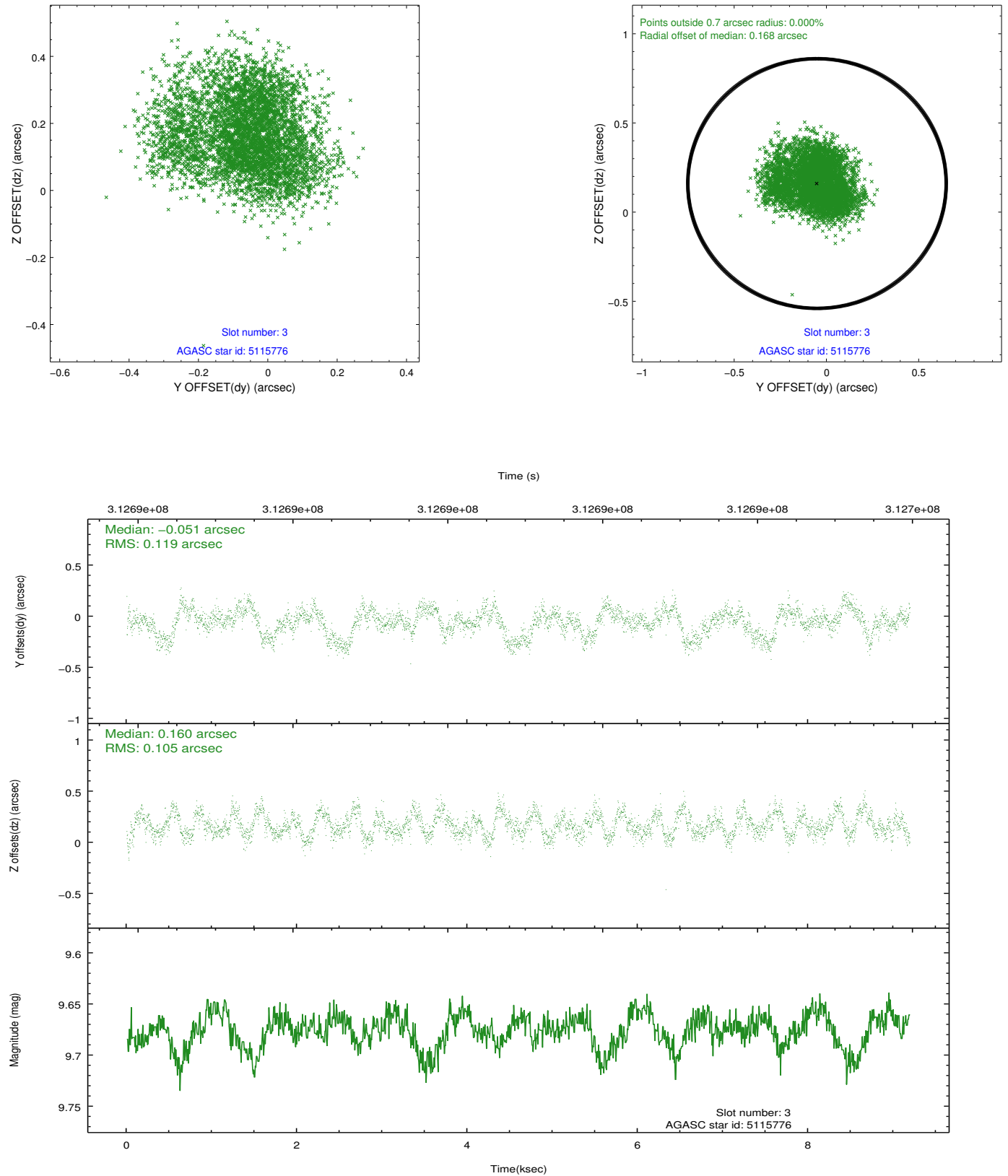


Slot Statistics

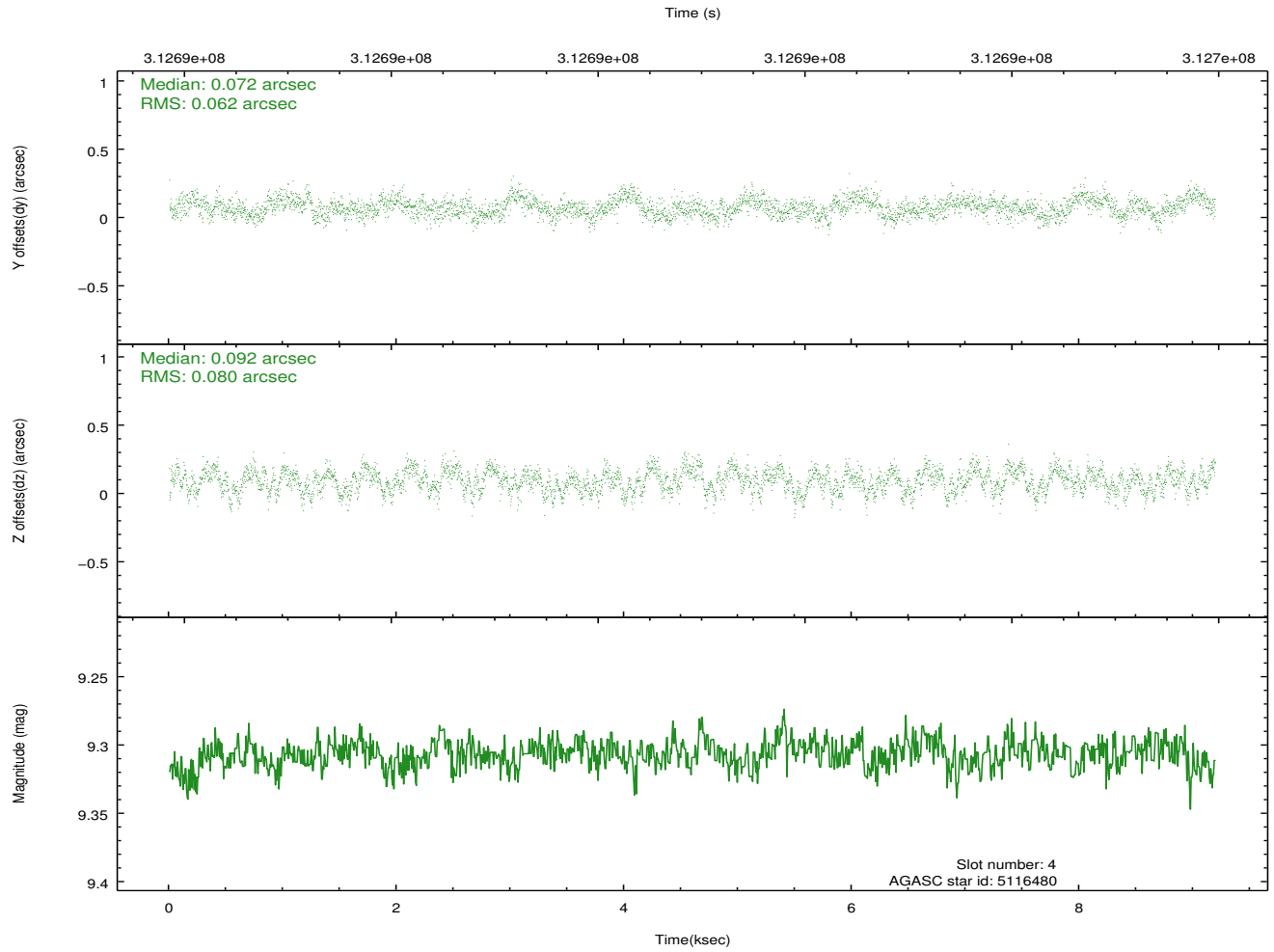
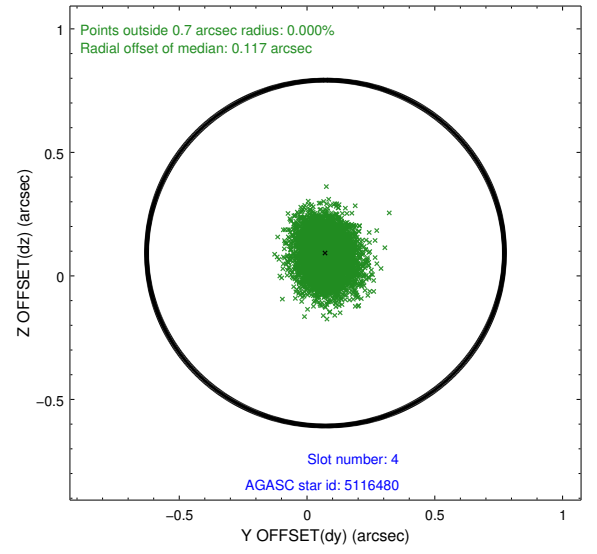
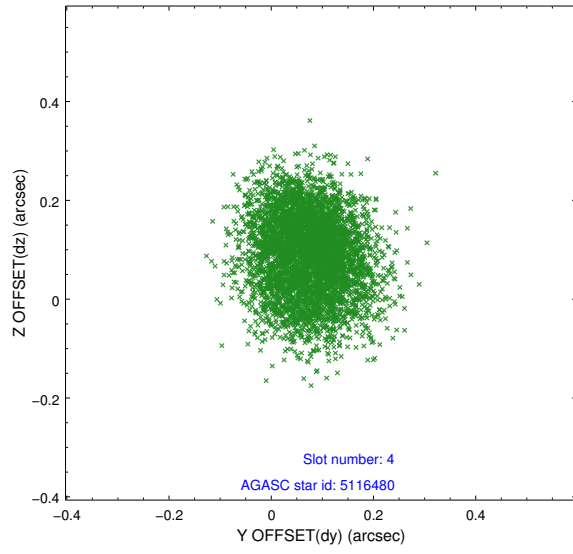
slot	status	id	mag	n_pts	med_dy	med_dz	dr1	dr2	ra	dec	mean_y	mean_z
0	FID	ACIS-I-1	7.23	2243	0.033	-0.009	0.009	0.022	0.000000	0.000000	925.23	-838.40
1	FID	ACIS-I-5	7.22	2242	-0.225	0.032	0.007	0.017	0.000000	0.000000	-1822.81	1058.82
2	FID	ACIS-I-6	7.24	2242	0.101	0.047	0.008	0.015	0.000000	0.000000	390.19	1704.02
3	GUIDE	5115776	9.68	4481	-0.051	0.160	0.174	0.267	36.405971	0.913022	-1621.62	-826.62
4	GUIDE	5116480	9.31	4480	0.072	0.092	0.108	0.171	36.624607	0.603451	-260.25	-917.10
5	GUIDE	5119056	9.54	4479	0.009	-0.042	0.133	0.223	36.799344	0.156256	1386.51	-1442.53
6	GUIDE	5119688	10.09	4478	0.220	-0.119	0.169	0.289	37.358261	0.292194	2274.42	428.49
7	GUIDE	5114440	8.63	4481	-0.227	-0.096	0.093	0.150	37.095498	1.481540	-1648.06	2389.46

2.4 Star Slots

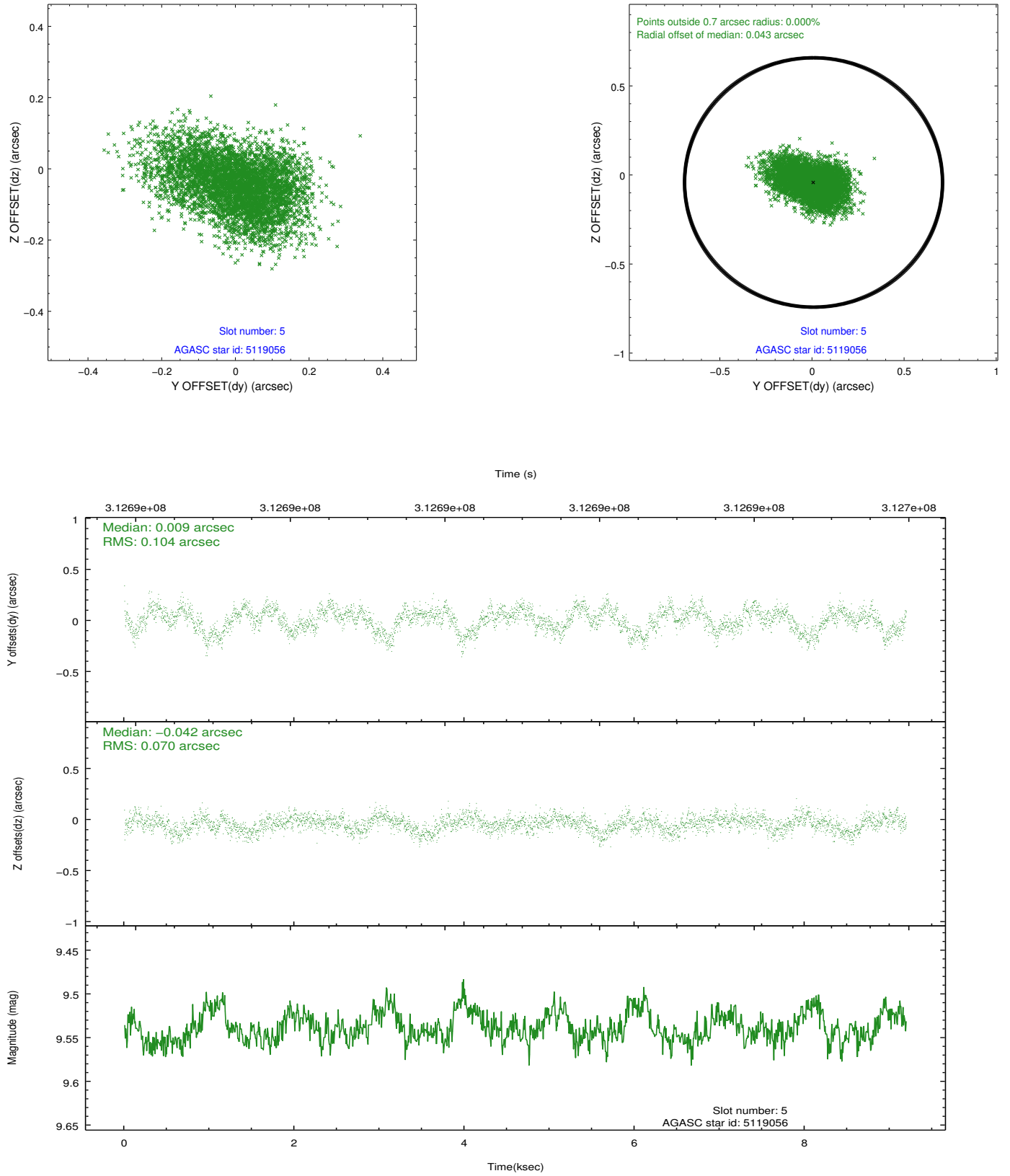
2.4.1 Slot 3



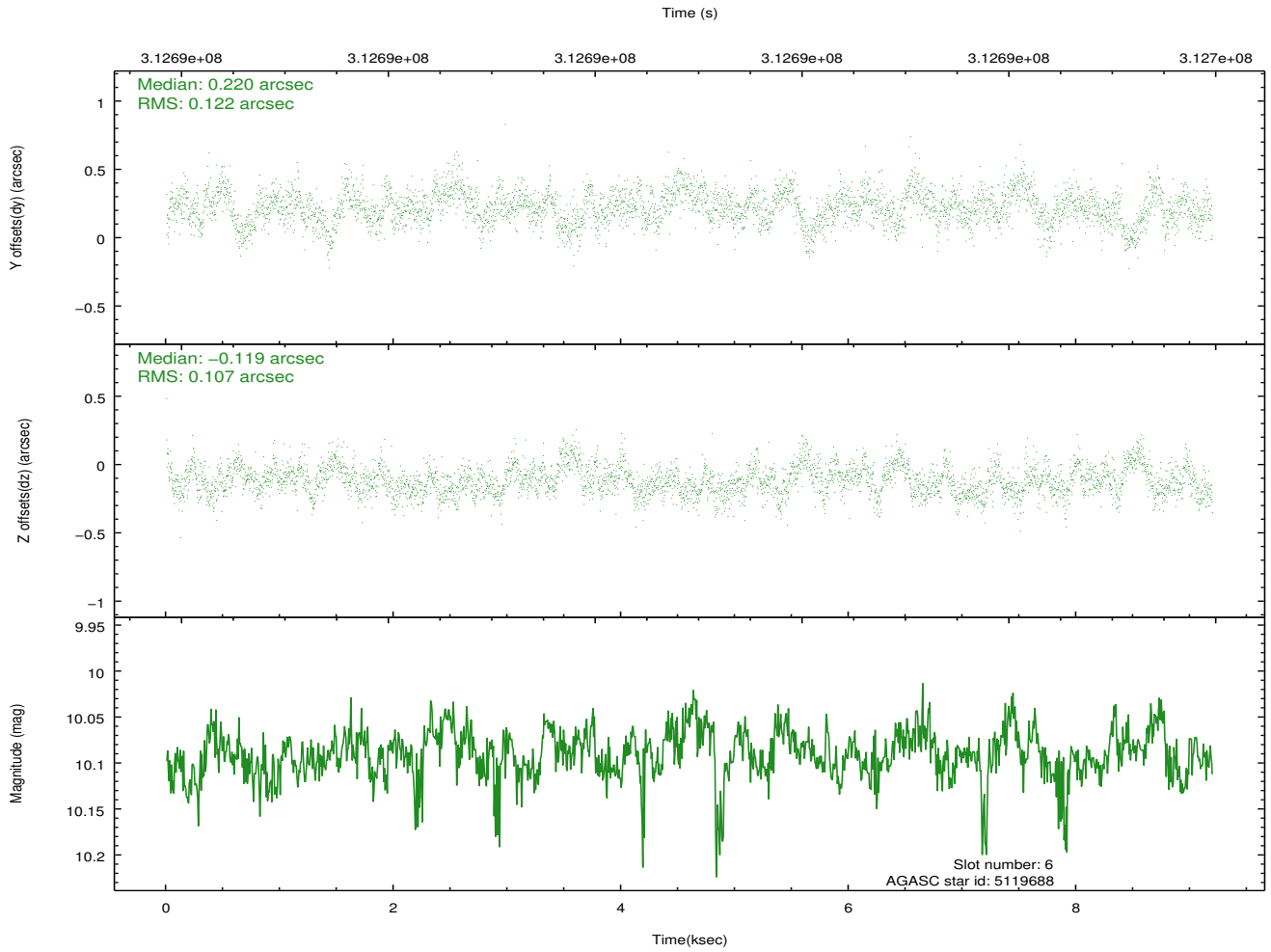
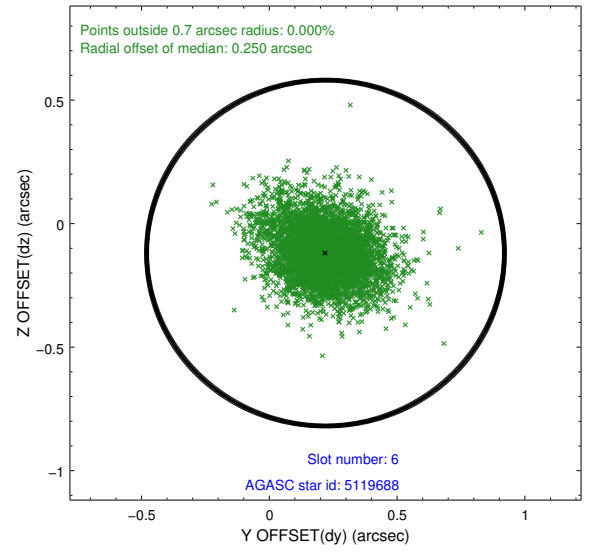
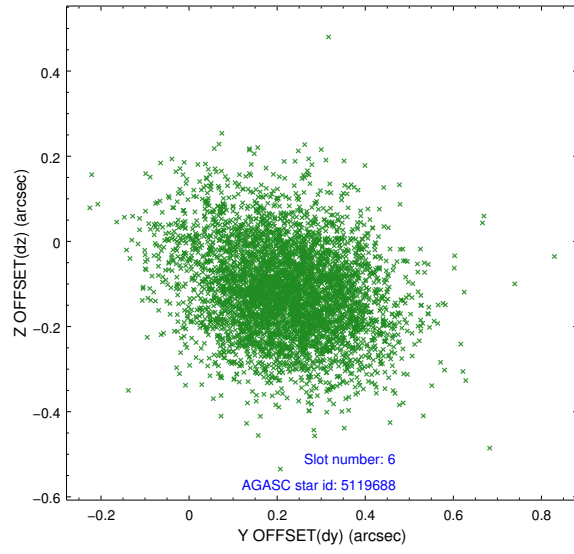
2.4.2 Slot 4



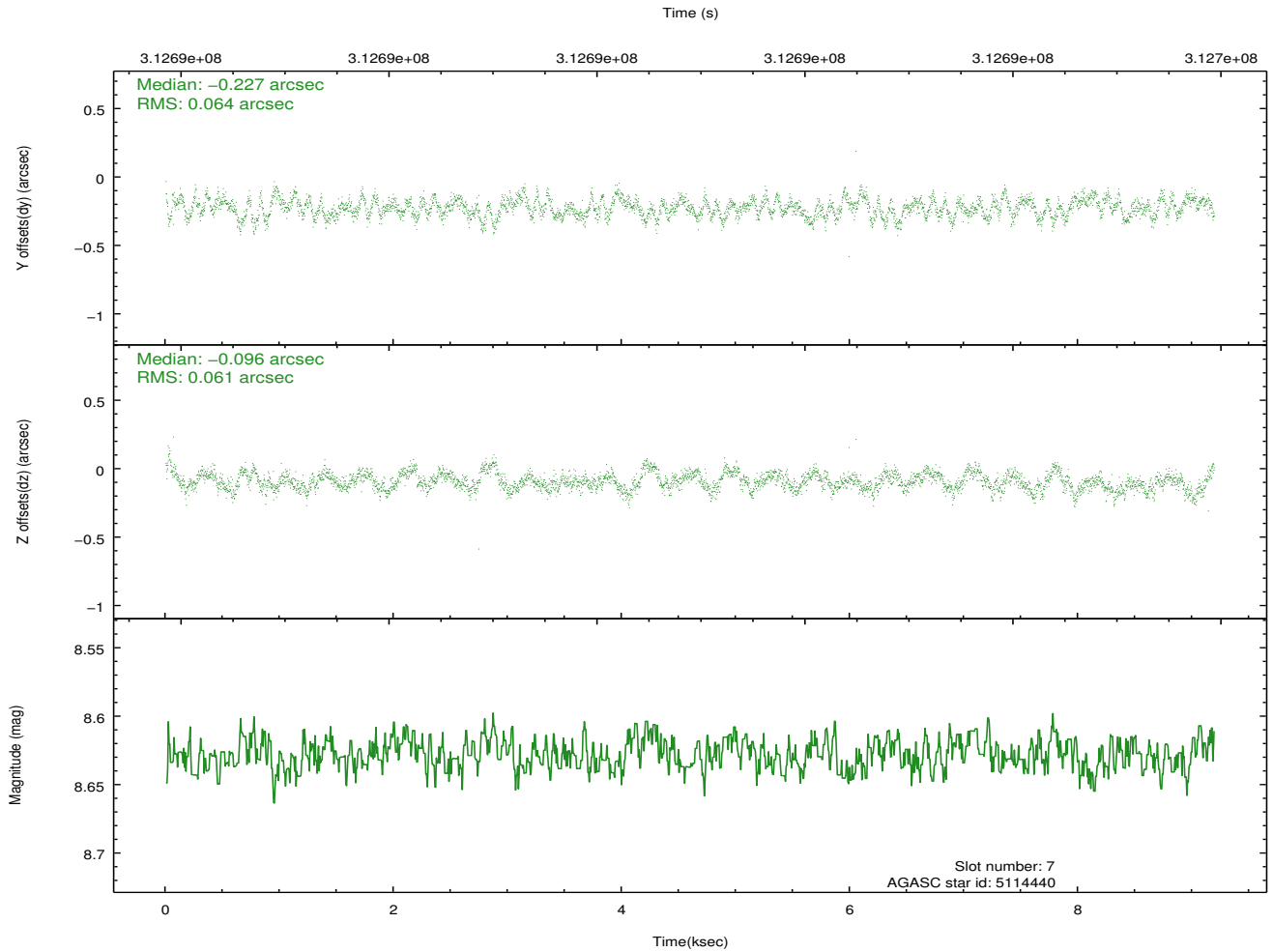
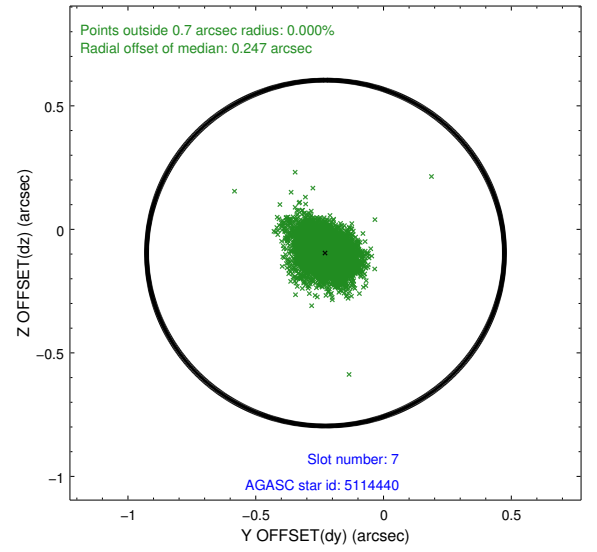
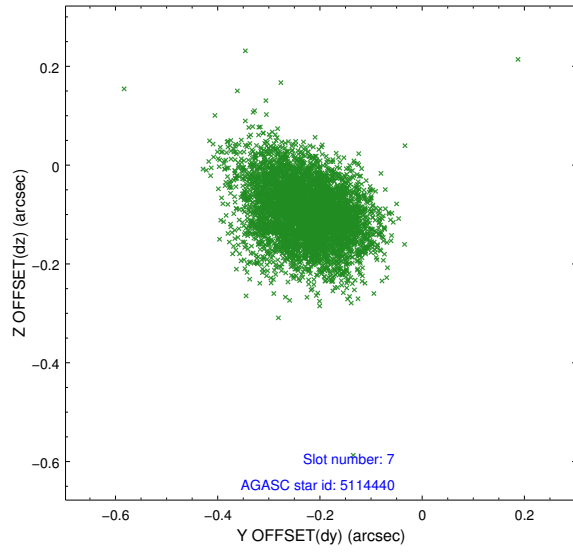
2.4.3 Slot 5



2.4.4 Slot 6

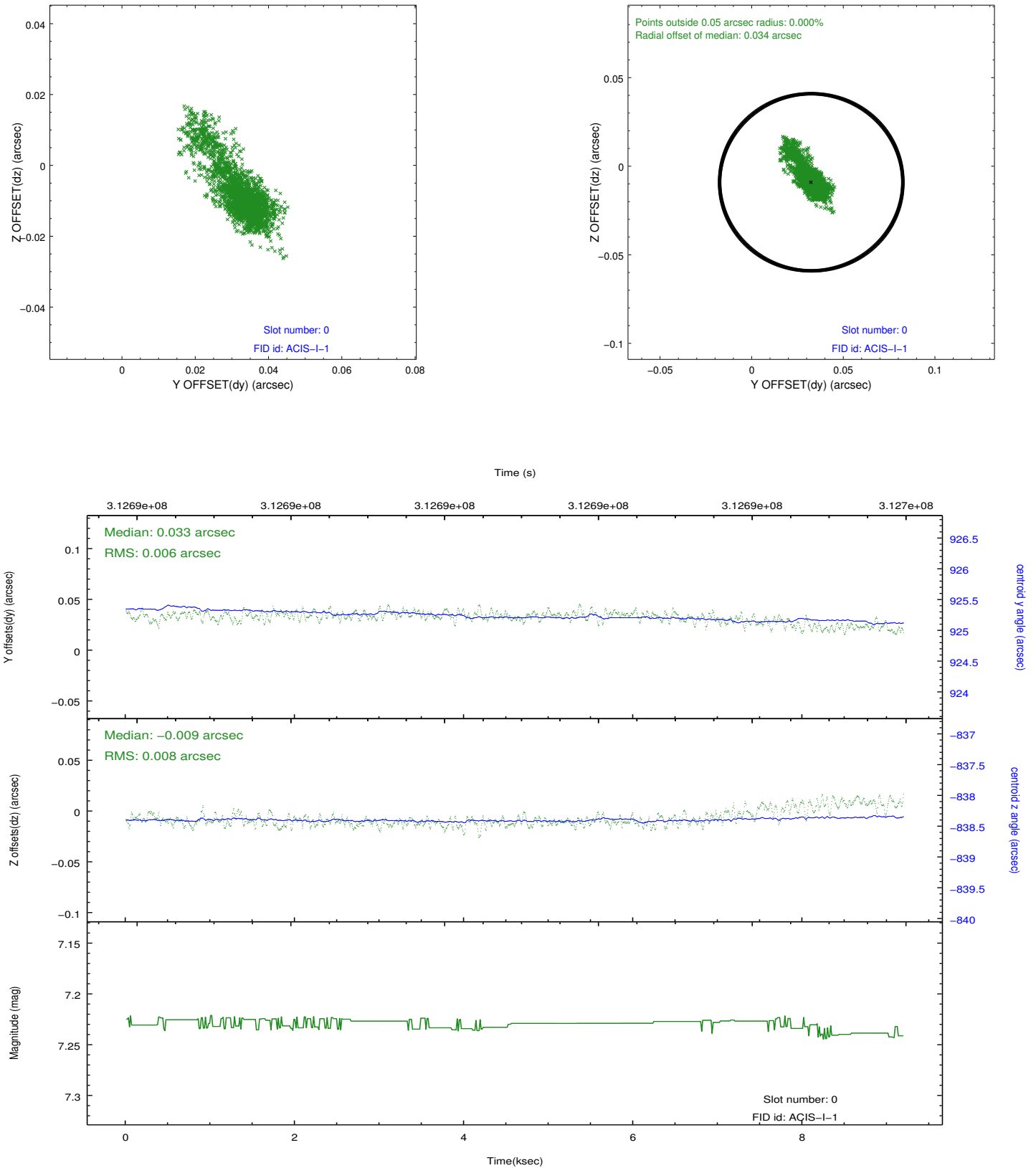


2.4.5 Slot 7

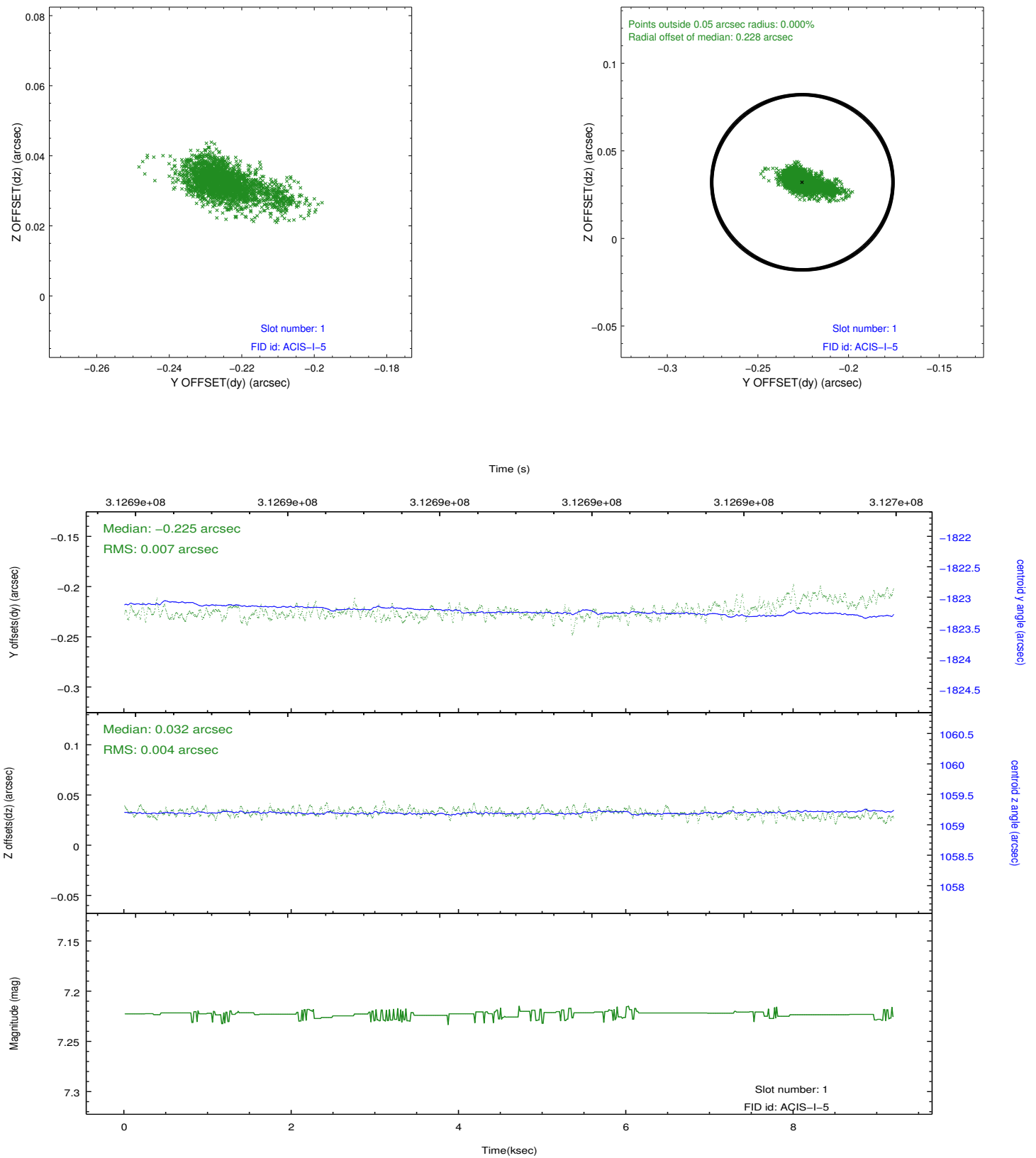


2.5 FID Slots

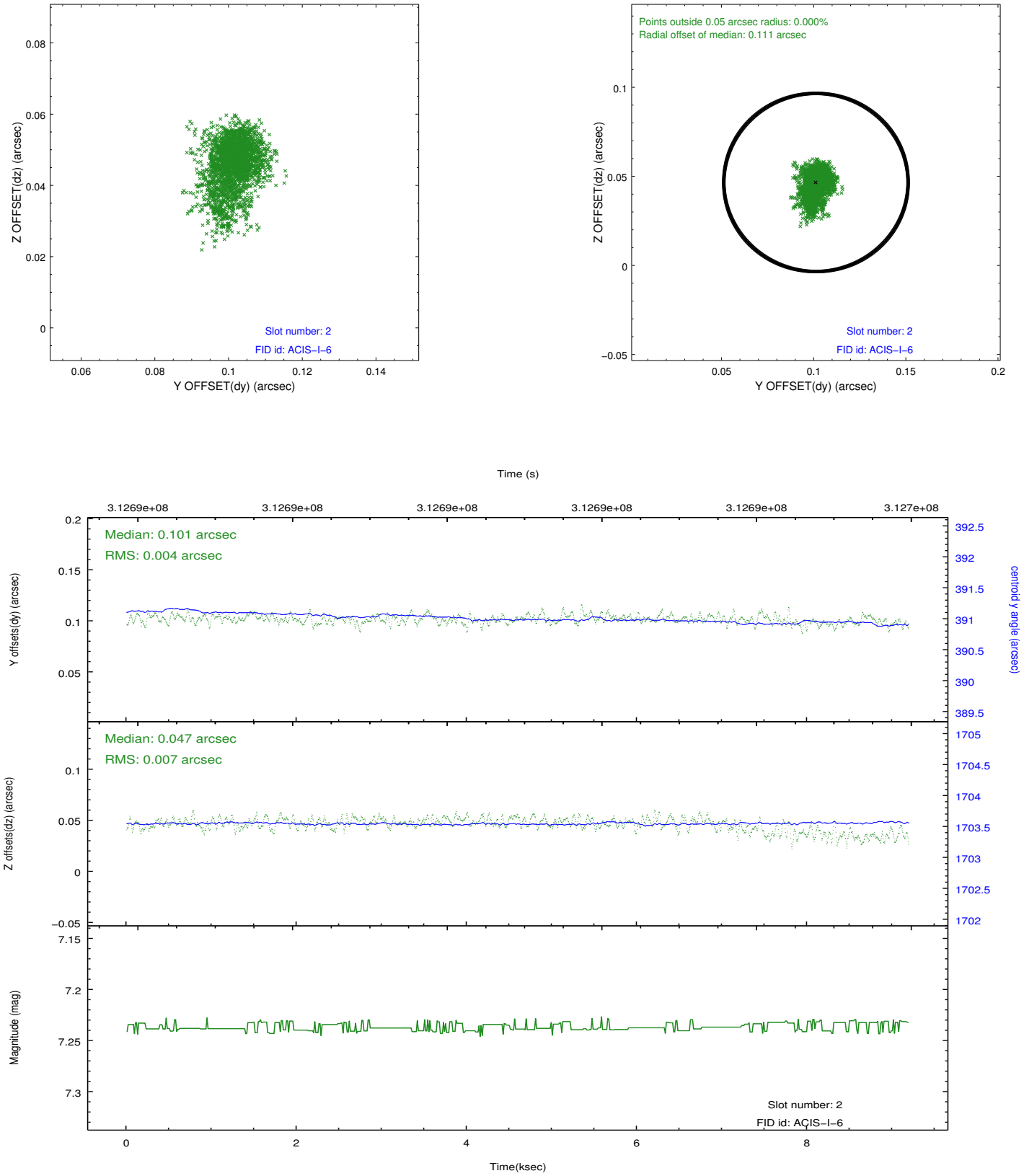
2.5.1 Slot 0



2.5.2 Slot 1



2.5.3 Slot 2



A Summary

A.1 Status

V&V Scientist	Beth Sundheim
V&V Date (YYYY-MM-DD)	2012.05.07
V&V Edition	1
V&V Disposition and Status	OK
V&V Charge Time	9.18530007

A.2 Comments