

V&V Reference Report

L2 ASCDS Version : 8.4.5

Observation 12231 - L2 Version 2
Chandra X-Ray Center

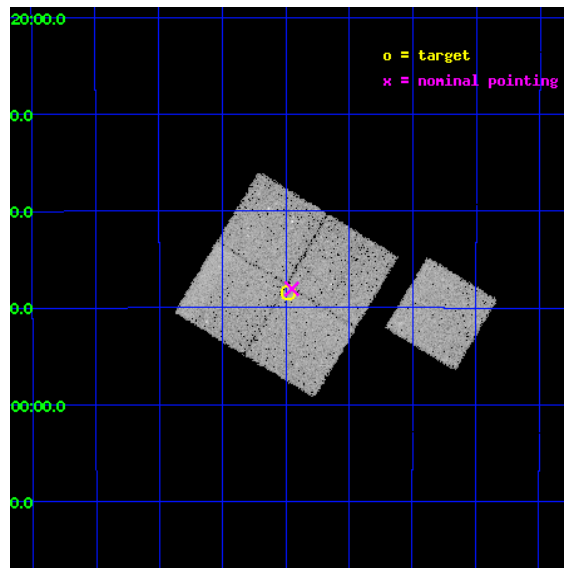
L2 Processing Date : Jun 30 2012

Contents

1	Front	2
2	OBI	3
2.1	OBI	3
2.1.1	Images	3
2.1.2	Bias	3
2.1.3	Parameters	4
2.1.4	Events	4
2.2	Compared Parameters	5
2.3	Aspect	6
2.4	Star Slots	9
2.4.1	Slot 3	9
2.4.2	Slot 4	10
2.4.3	Slot 5	11
2.4.4	Slot 6	12
2.4.5	Slot 7	13
2.5	FID Slots	14
2.5.1	Slot 0	14
2.5.2	Slot 1	15
2.5.3	Slot 2	16
A	Summary	17
A.1	Status	17
A.2	Comments	17

1 Front

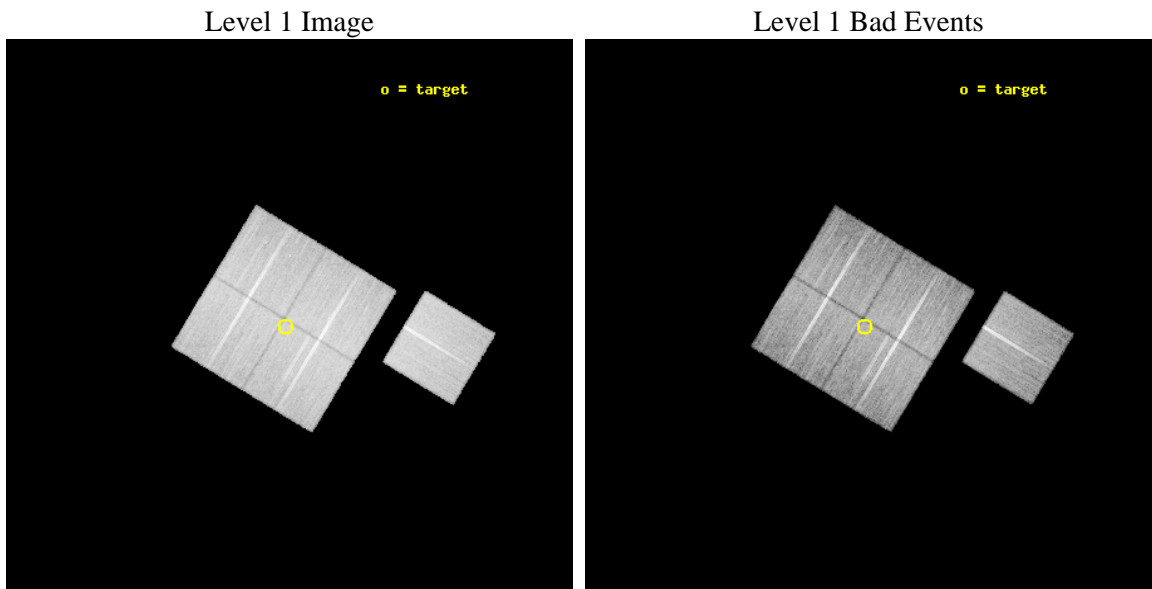
seq_num	900939	Sequence number
obs_id	12231	Observation id
title	The Chandra Deep Field-South Survey: An Ultradeep Chandra Legacy	P
observer	Dr. Harvey Tananbaum	Principal investigator
object	Chandra Deep Field-South	Source name
dtcycle	0	
cycle	P	events from which exps? Prim/Second/Both
ra_targ	53.12	Observer's specified target RA [deg]
dec_targ	-27.806389	Observer's specified target Dec [deg]
ra_nom	53.113173537996	Nominal RA [deg]
dec_nom	-27.801009542559	Nominal Dec [deg]
roll_nom	121.20548261614	Nominal Roll [deg]
revision	2	Processing version of data
ontime	25047.959202409	Sum of GTIs [s]
livetime	24720.68917539	Livetime [s]
ontime0	25051.100192666	Sum of GTIs [s]
ontime1	25041.677231848	Sum of GTIs [s]
ontime2	25047.959182441	Sum of GTIs [s]
ontime3	25047.959202409	Sum of GTIs [s]
ontime6	25051.100192666	Sum of GTIs [s]
l2events	86747	Number of level 2 events



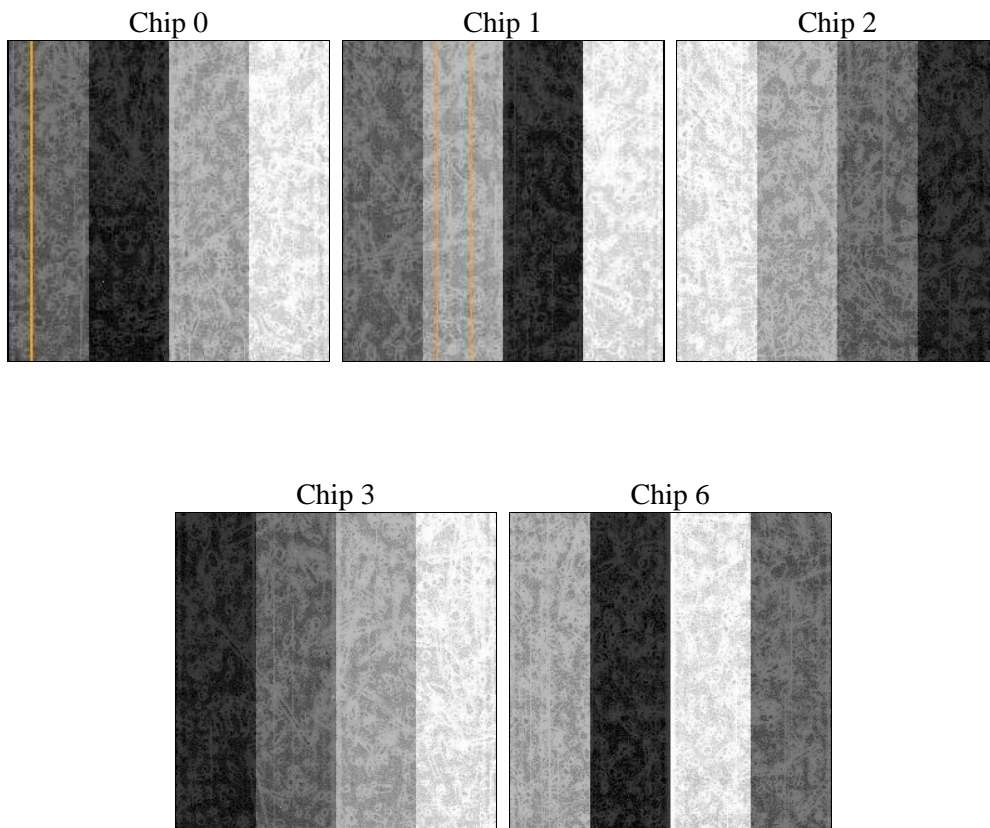
2 OBI

2.1 OBI

2.1.1 Images



2.1.2 Bias



2.1.3 Parameters

obi_num	0	Obi number	sched_exp_time	25000.000000	[s] Scheduled observation exposure time
ascdsver	8.4.5	Processing system revision	ontime	25047.959202409	Sum of GTIs [s]
caldbver	4.5.0	 	ontime0	25051.100192666	Sum of GTIs [s]
date	2012-06-30T01:01:03	Date and time of file creation	ontime1	25041.677231848	Sum of GTIs [s]
revision	2	Processing version of data	ontime2	25047.959182441	Sum of GTIs [s]
			ontime3	25047.959202409	Sum of GTIs [s]
			ontime6	25051.100192666	Sum of GTIs [s]
			l1events	930406	Number of level 1 events

2.1.4 Events

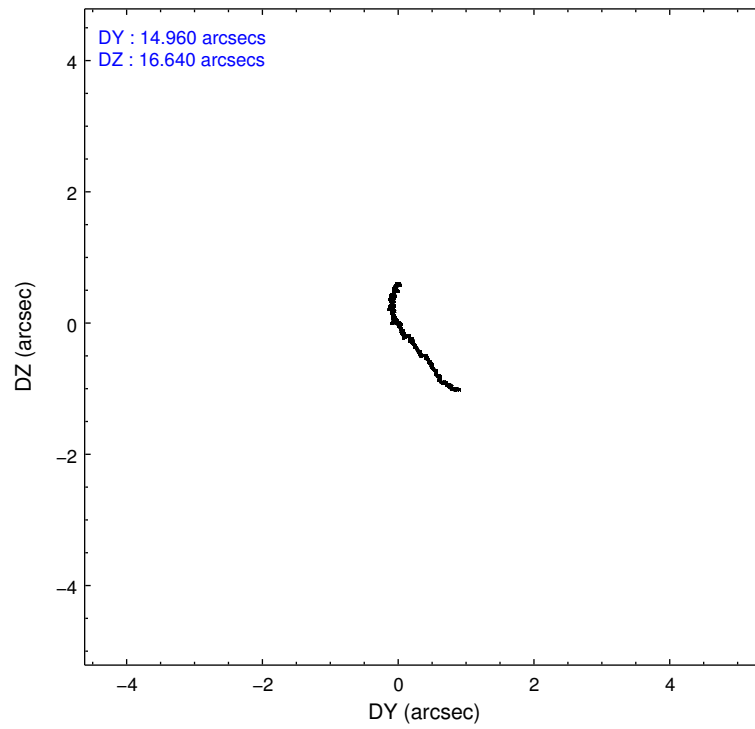
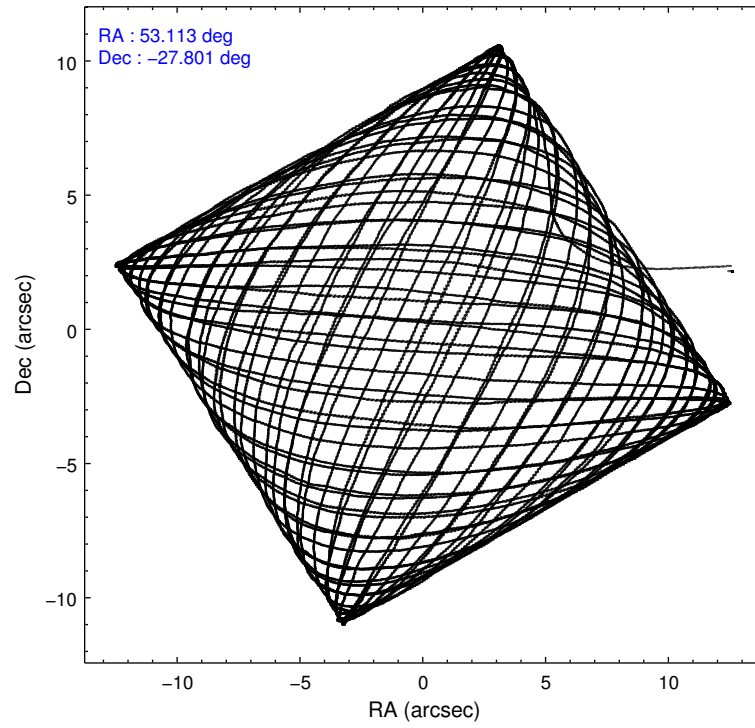
	ccd 0	ccd 1	ccd 2	ccd 3	ccd 6
level 1 events	173650	183567	193643	188135	191411
rejected events	152803	160640	173907	168886	170530
rejected %	87%	87%	89%	89%	89%

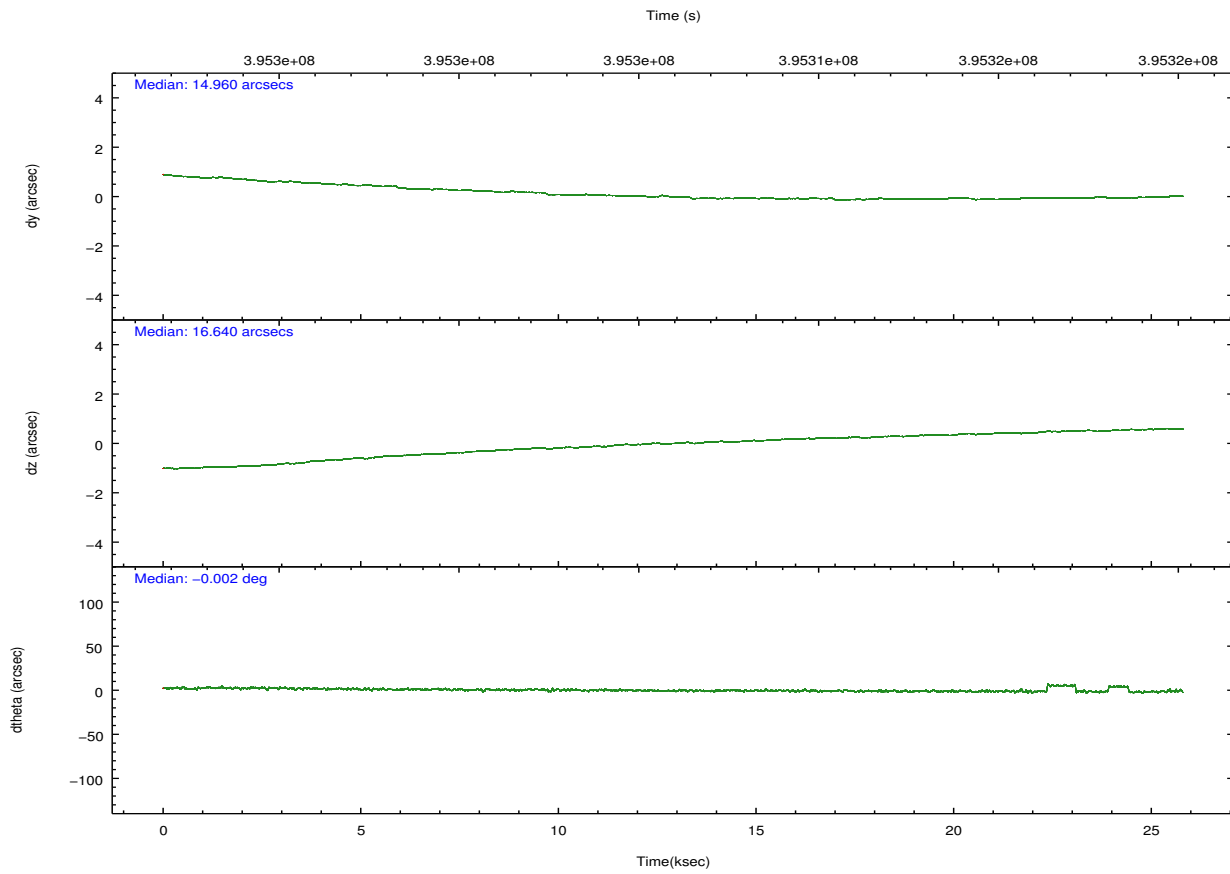
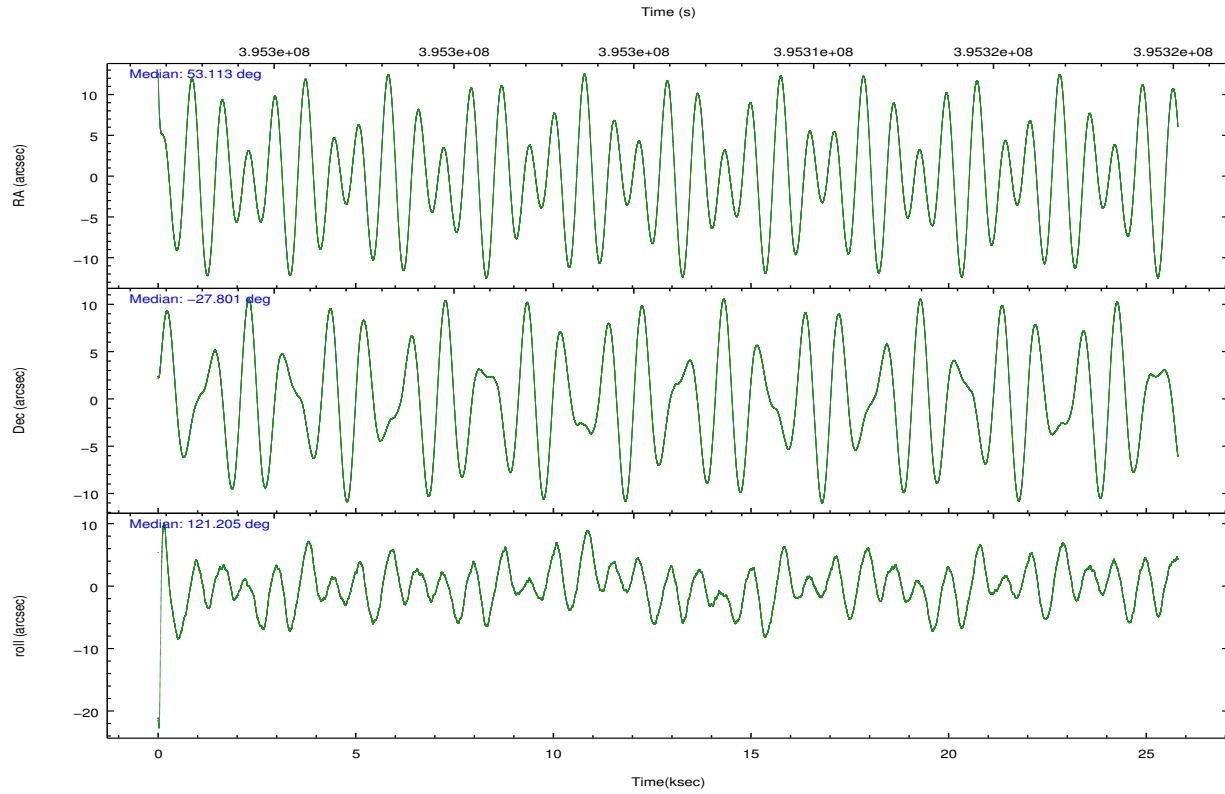
	ccd 0	ccd 1	ccd 2	ccd 3	ccd 6
grade 0 events	7427	8029	6983	6589	7328
	4%	4%	3%	3%	3%
grade 1 events	113	124	130	104	87
	0%	0%	0%	0%	0%
grade 2 events	4914	5380	4770	4445	4608
	2%	2%	2%	2%	2%
grade 3 events	2300	2379	2028	2002	2183
	1%	1%	1%	1%	1%
grade 4 events	2116	2386	2094	2131	2170
	1%	1%	1%	1%	1%
grade 5 events	7533	8184	7415	8614	8265
	4%	4%	3%	4%	4%
grade 6 events	4092	4757	3861	4085	4598
	2%	2%	1%	2%	2%
grade 7 events	145155	152328	166362	160165	162172
	83%	82%	85%	85%	84%

2.2 Compared Parameters

Parameter	Planned	Actual	Parameter	Planned	Actual
Instrument	ACIS	ACIS	Obspar format version number	7	7
Detector	ACIS-01236	ACIS-01236	Obspar file type	PREDICTED	ACTUAL
Grating	NONE	NONE	Obspar update status	NONE	UPDATED
Data mode	VFAINT	VFAINT	CCD I0 on	Y	Y
Observation mode	POINTING	POINTING	CCD I1 on	Y	Y
[deg] Pointing RA	53.140458	53.11317353799615	CCD I2 on	Y	Y
[deg] Pointing Dec	-27.814177	-27.80100954255946	CCD I3 on	Y	Y
[deg] Pointing Roll	121.009548	121.2054826161415	CCD S0 on	N	N
[mm] SIM focus pos	-0.782348	-0.7809083437167272	CCD S1 on	N	N
[mm] SIM defocus	0	0.001439871863259334	CCD S2 on	O1	Y
[mm] SIM translation stage pos	-233.592463	-233.5874344608287	CCD S3 on	N	N
[mm] SIM translation stage offset	0	-0.005018542100998502	CCD S4 on	N	N
[s] Observation start time (MET)	395293858.184000	395292093.38025	CCD S5 on	N	N
Observation start date	2010-07-12T03:49:52	2010-07-12T03:21:33	Number of optional ACIS chips dropped	0	0
[s] Observation end time (MET)	395318858.184000	395319937.50667	On-chip summing requested	N	N
Observation end date	2010-07-12T10:46:32	2010-07-12T11:05:37	Subarray requested	NONE	NONE
Read mode	TIMED	TIMED	Alternating exposures requested	N	N
			[s] Primary exposure time	0.000000	3.1

2.3 Aspect



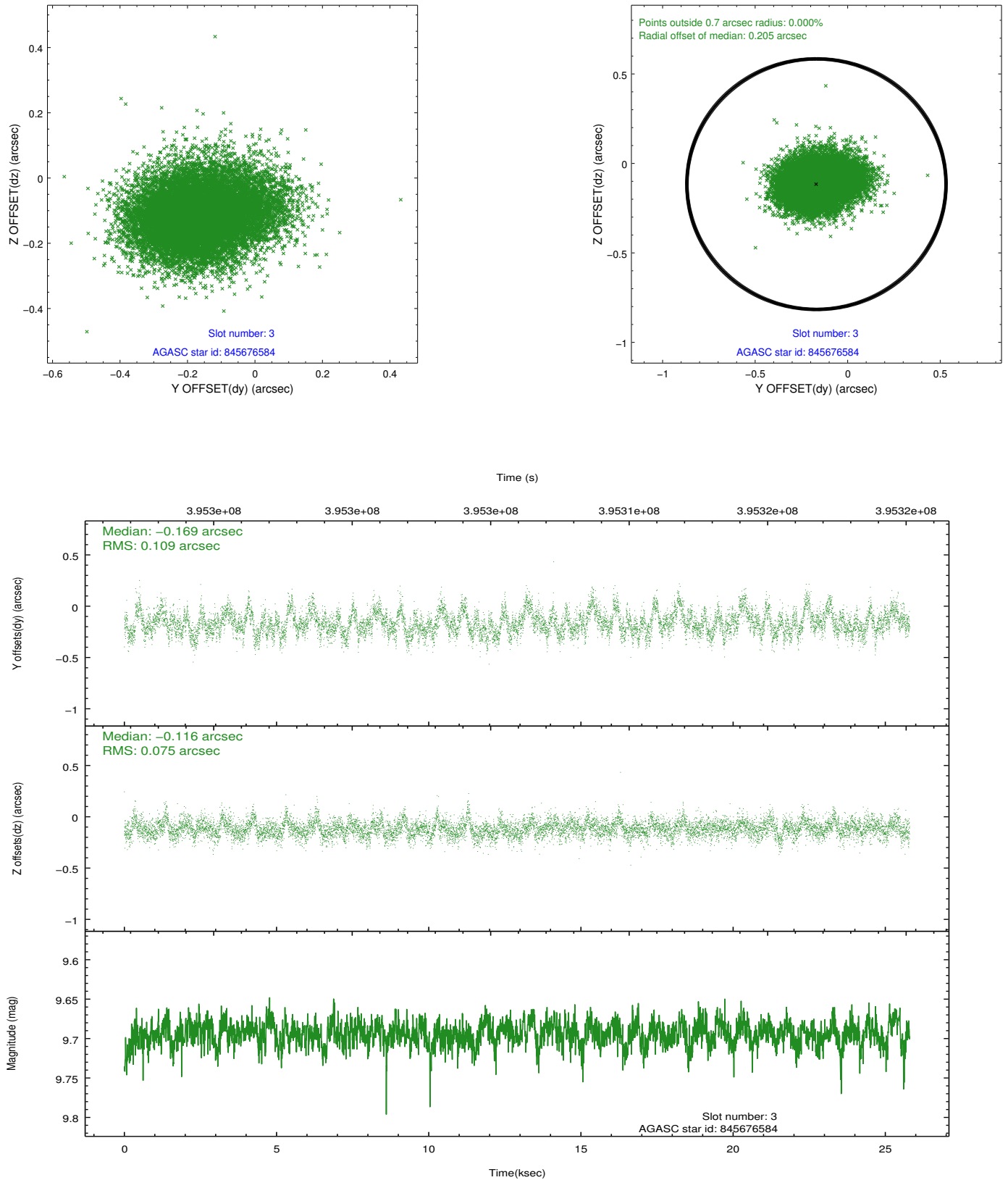


Slot Statistics

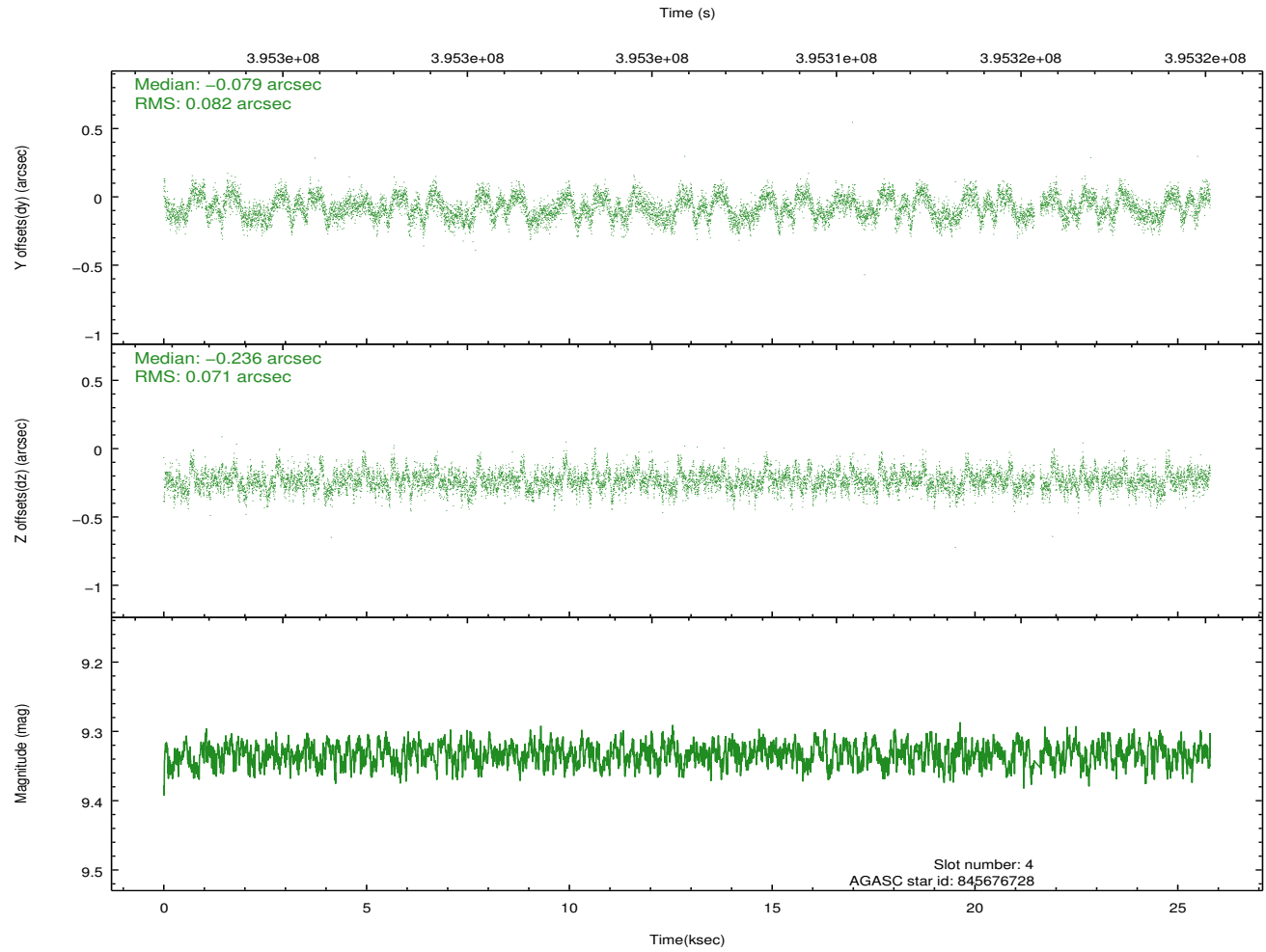
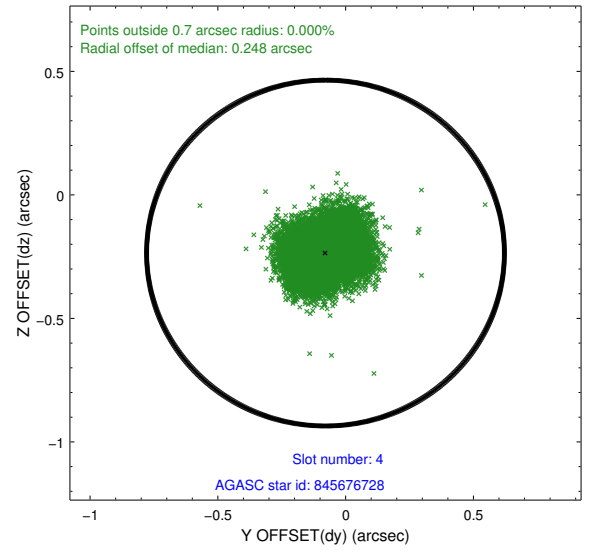
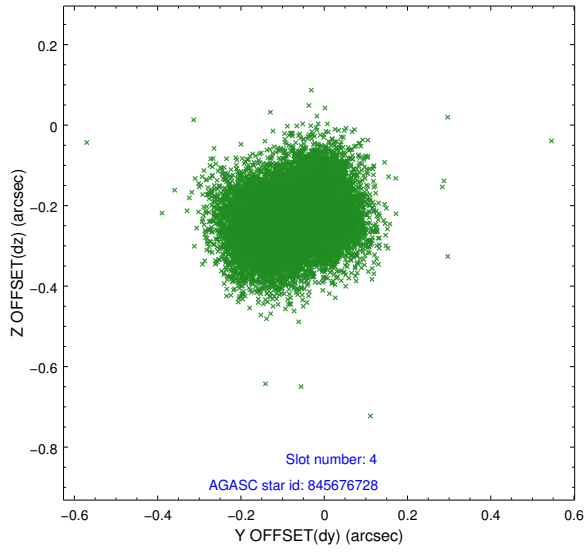
slot	status	id	mag	n_pts	med_dy	med_dz	dr1	dr2	ra	dec	mean_y	mean_z
0	FID	ACIS-I-1	7.03	6293	-0.095	-0.080	0.015	0.033	0.000000	0.000000	924.26	-840.26
1	FID	ACIS-I-4	6.96	6290	0.032	0.124	0.017	0.038	0.000000	0.000000	2144.48	1059.69
2	FID	ACIS-I-6	7.04	6293	-0.035	0.025	0.011	0.026	0.000000	0.000000	390.35	1701.90
3	GUIDE	845676584	9.69	12570	-0.169	-0.116	0.140	0.231	52.264247	-27.542890	2269.50	1899.38
4	GUIDE	845676728	9.33	12500	-0.079	-0.236	0.118	0.182	52.877179	-27.664318	894.39	442.22
5	GUIDE	845676936	9.50	12569	-0.171	-0.021	0.149	0.225	52.843773	-27.880153	281.82	932.03
6	GUIDE	845807880	8.79	12576	0.121	0.113	0.093	0.144	53.382027	-27.886093	-618.21	-524.55
7	GUIDE	845813656	10.18	12551	0.292	0.243	0.175	0.273	53.922767	-28.083703	-2118.06	-1625.34

2.4 Star Slots

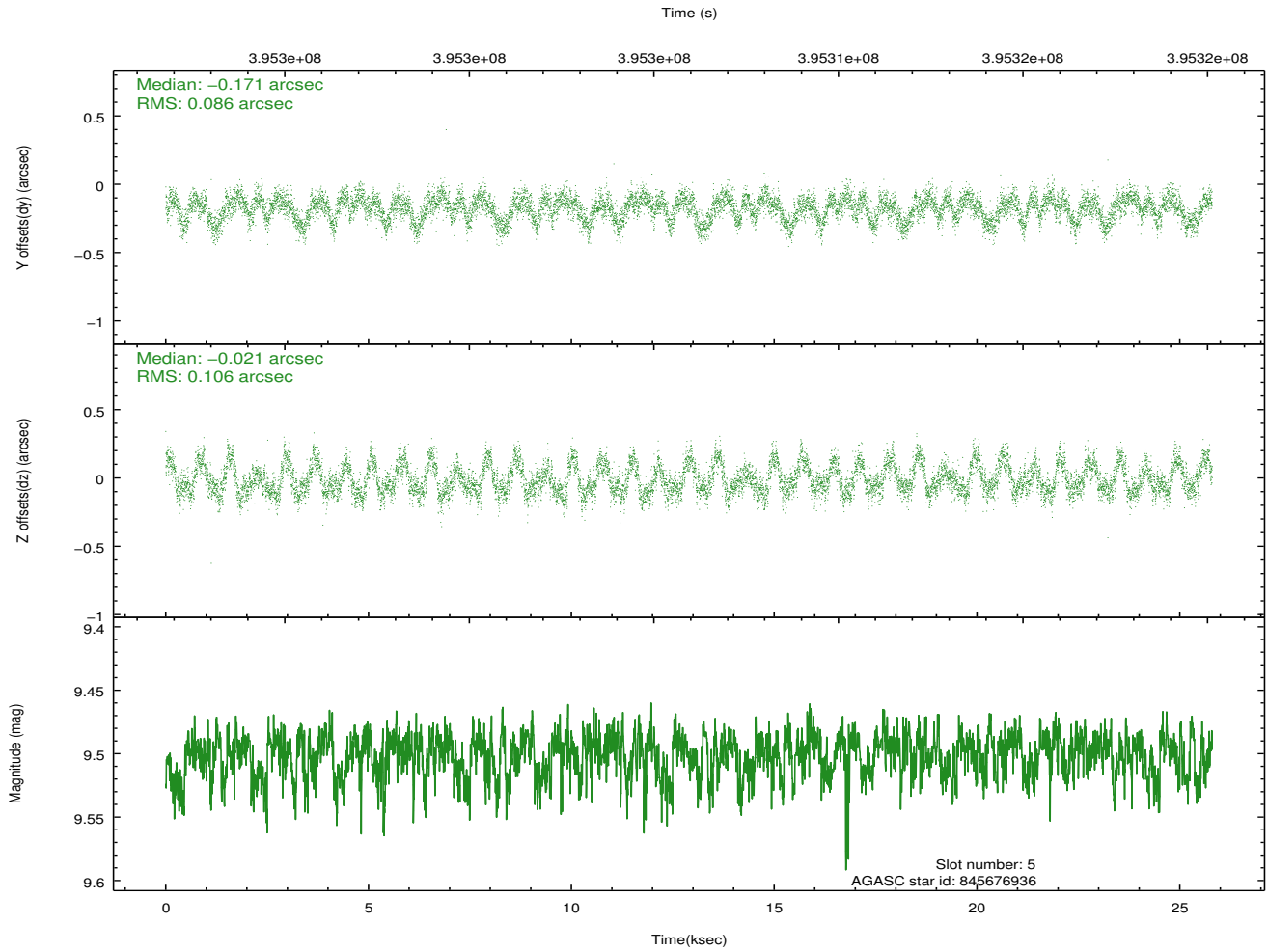
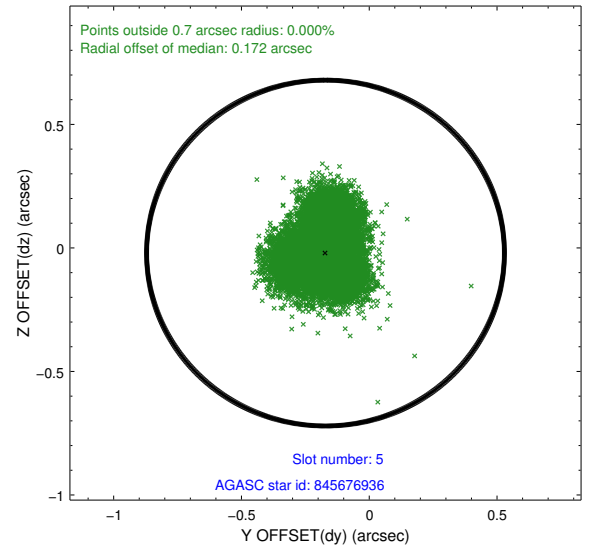
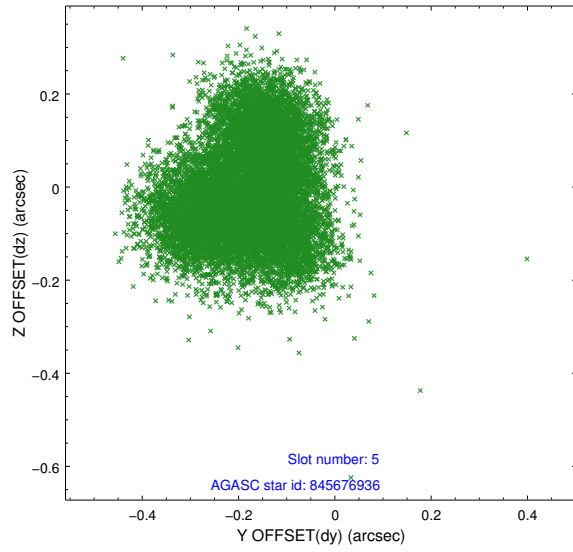
2.4.1 Slot 3



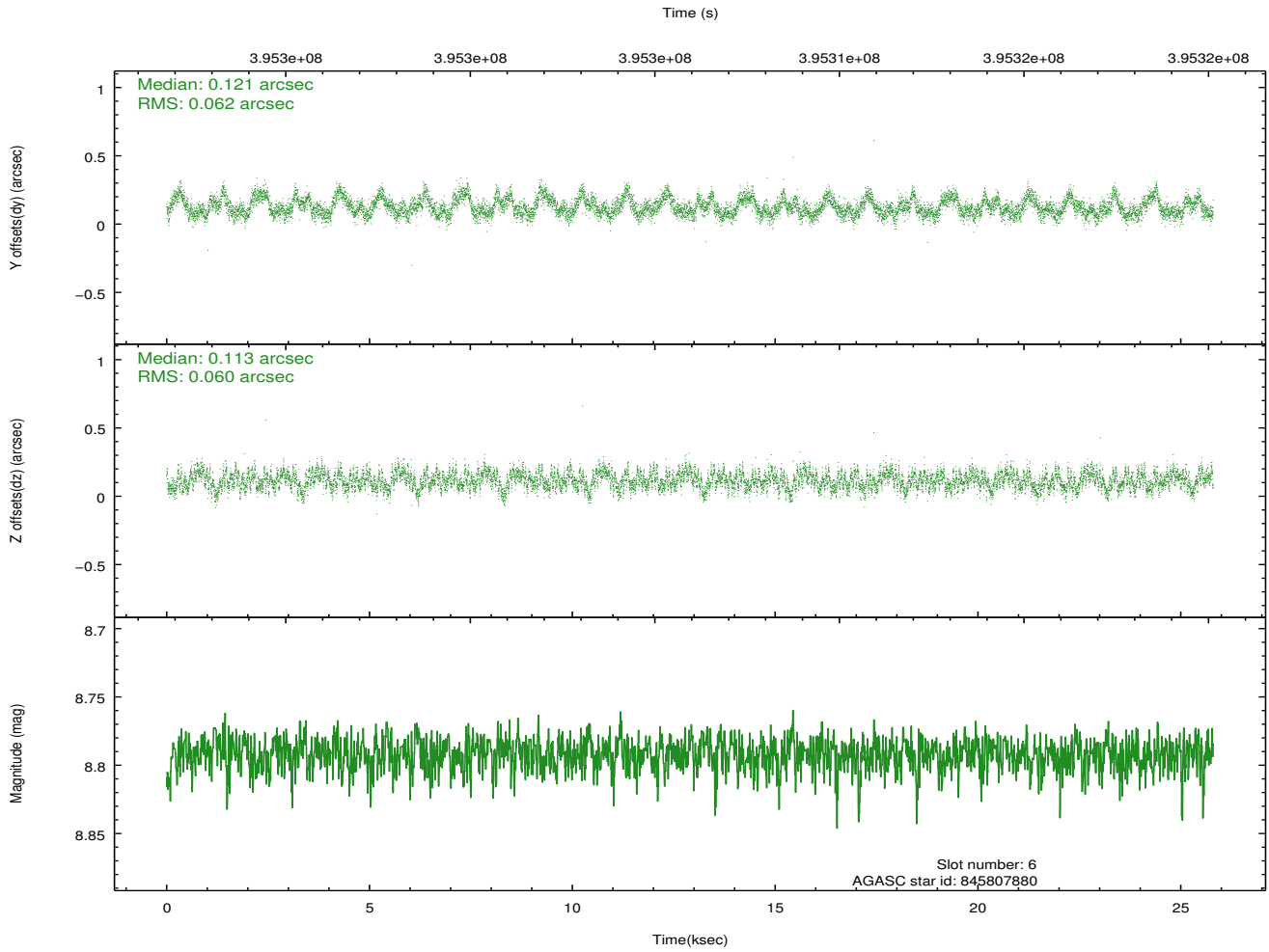
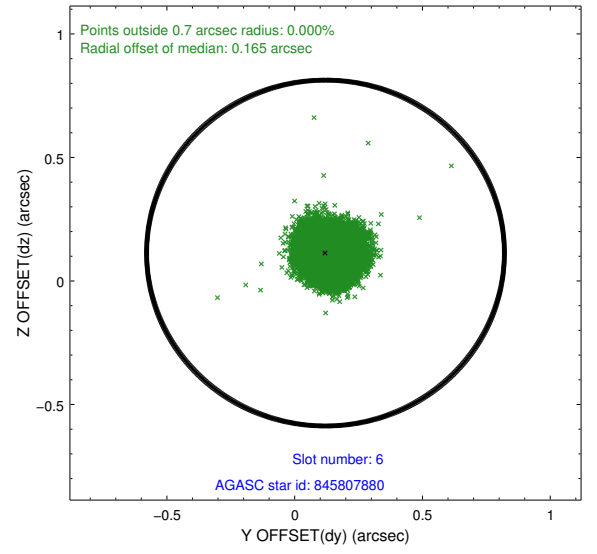
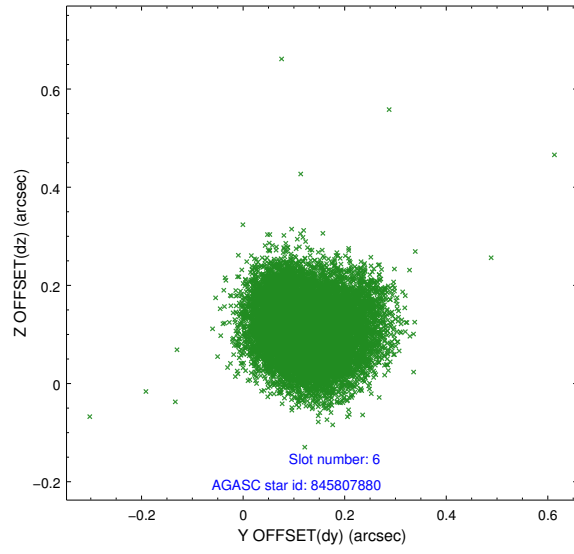
2.4.2 Slot 4



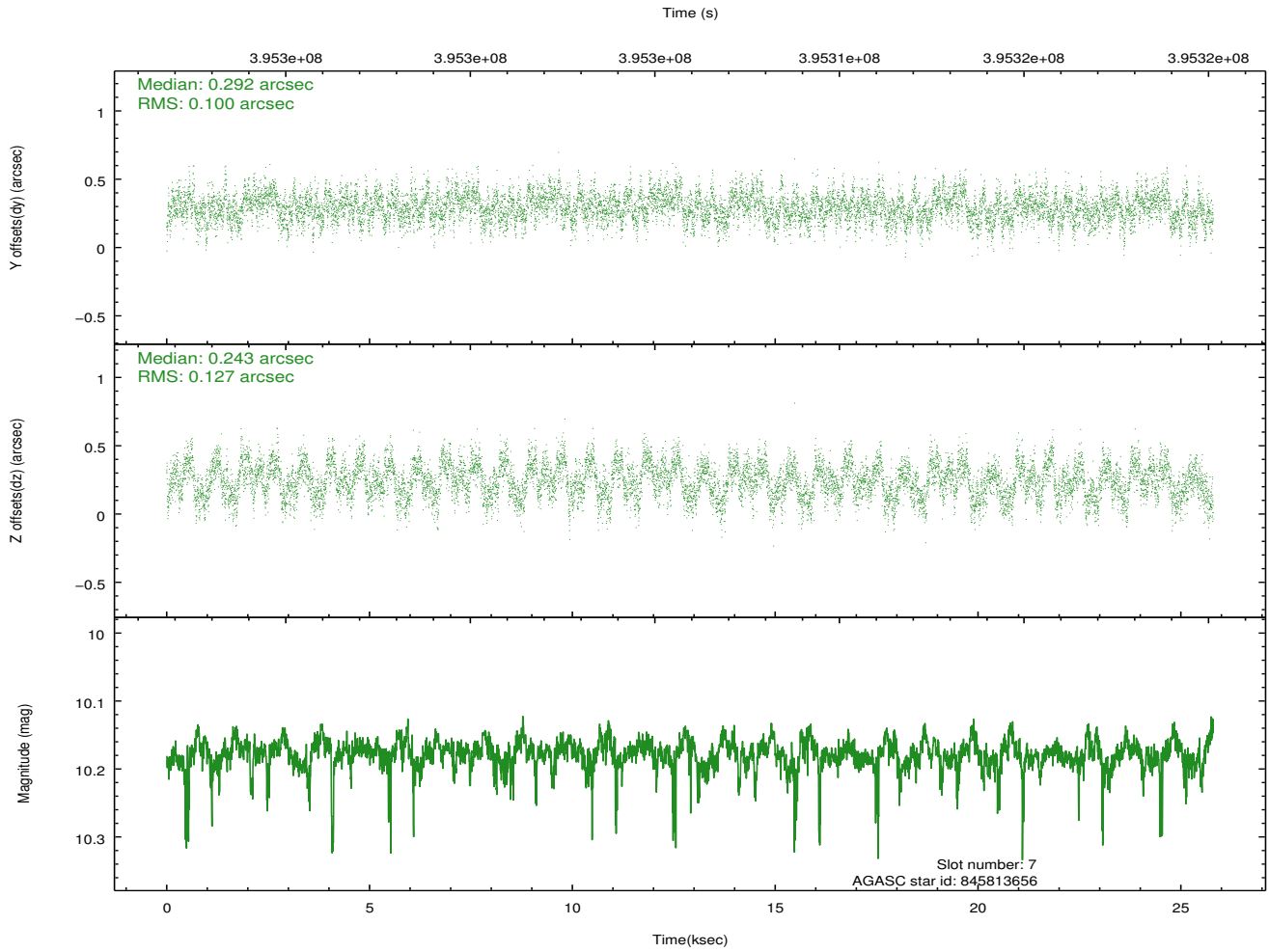
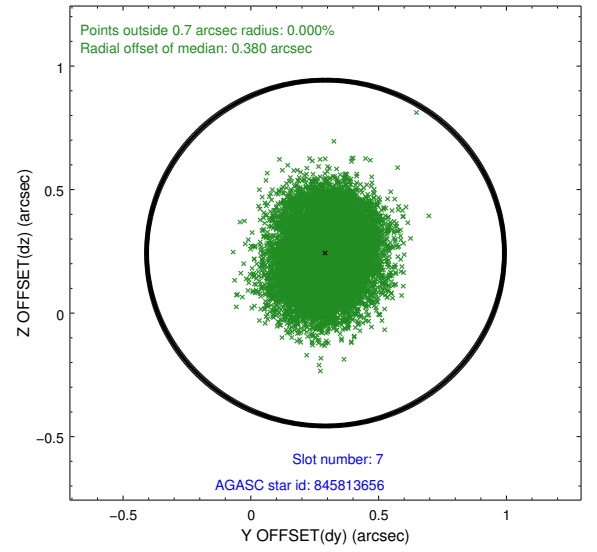
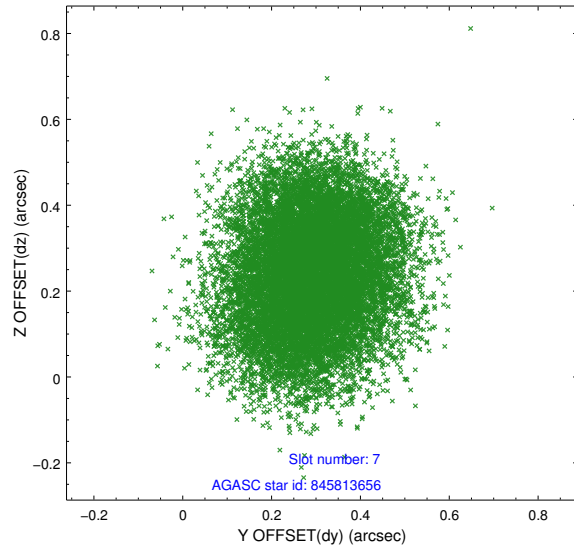
2.4.3 Slot 5



2.4.4 Slot 6

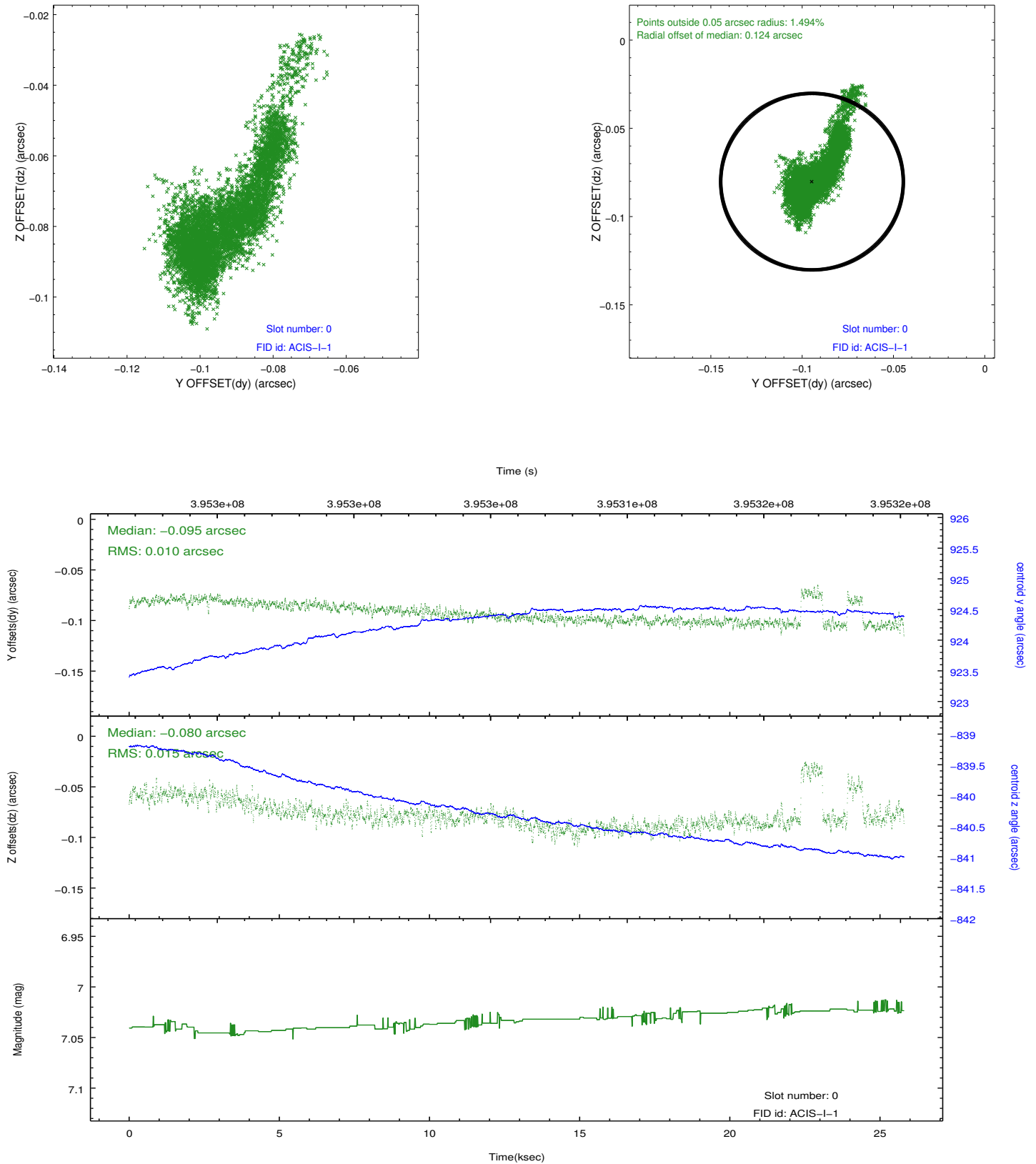


2.4.5 Slot 7

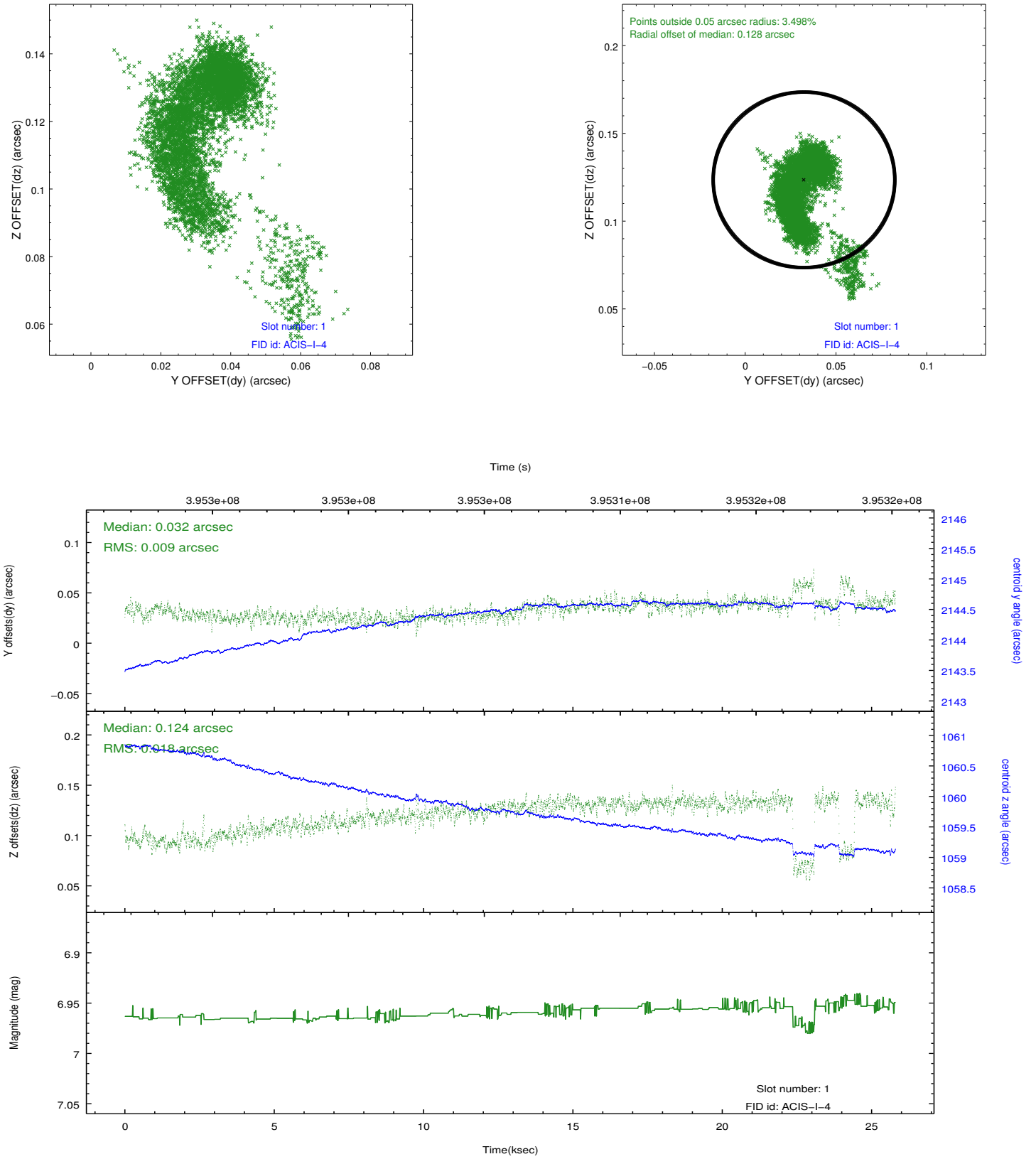


2.5 FID Slots

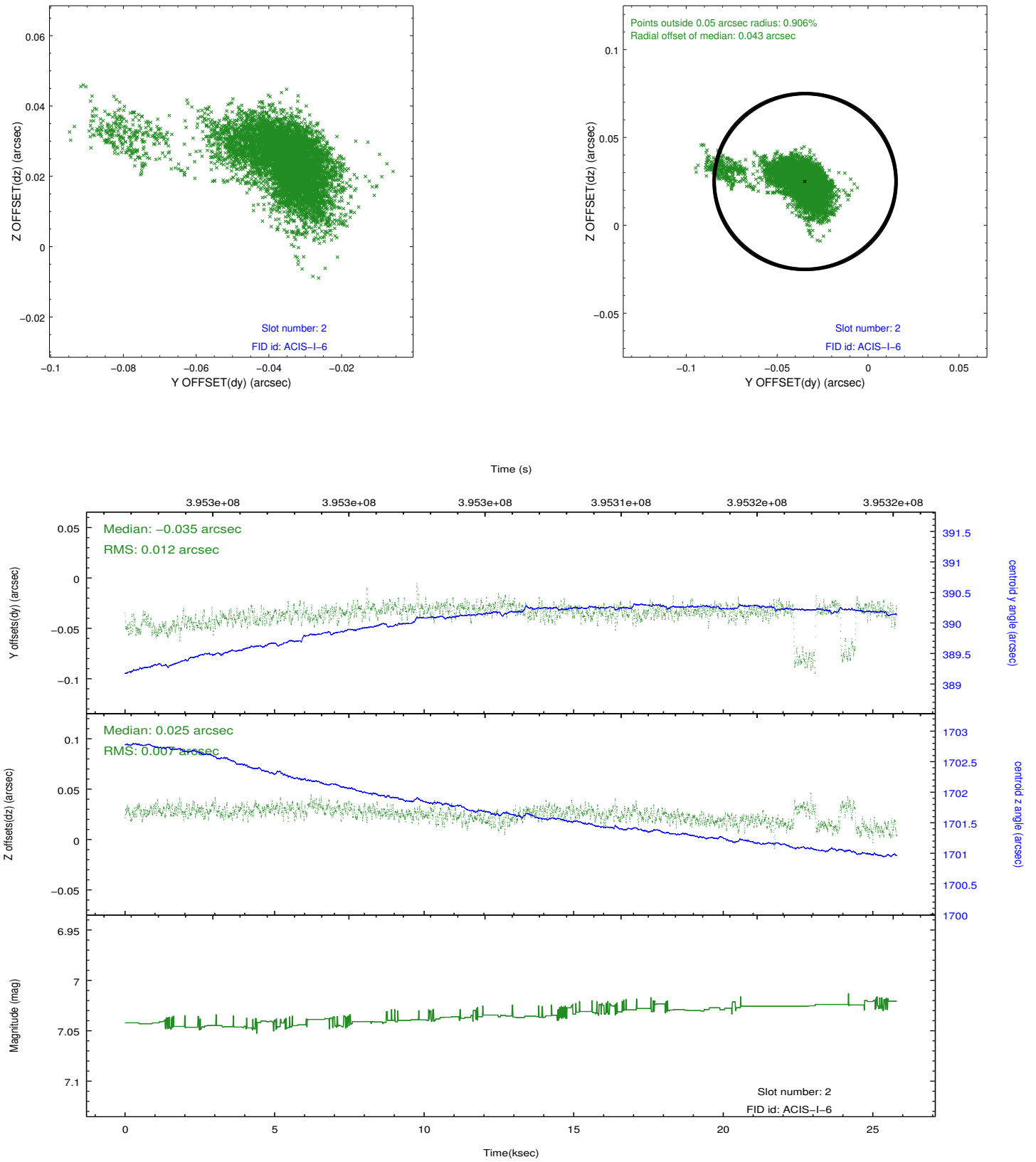
2.5.1 Slot 0



2.5.2 Slot 1



2.5.3 Slot 2



A Summary

A.1 Status

V&V Scientist	Jen Lauer
V&V Date (YYYY-MM-DD)	2012.07.09
V&V Edition	1
V&V Disposition and Status	OK
V&V Charge Time	25.047959202349

A.2 Comments