

# V&V Reference Report

## L2 ASCDS Version : 8.4.5

Observation 12123 - L2 Version 2  
Chandra X-Ray Center

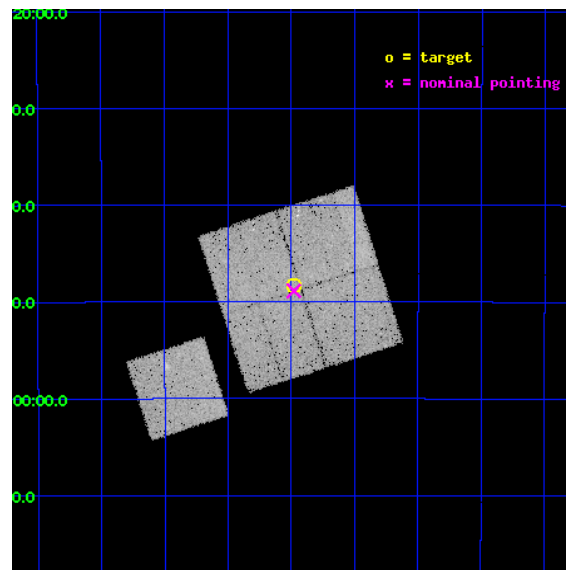
L2 Processing Date : Jun 23 2012

## Contents

<b>1</b>	<b>Front</b>	<b>2</b>
<b>2</b>	<b>OBI</b>	<b>3</b>
2.1	OBI . . . . .	3
2.1.1	Images . . . . .	3
2.1.2	Bias . . . . .	3
2.1.3	Parameters . . . . .	4
2.1.4	Events . . . . .	4
2.2	Compared Parameters . . . . .	5
2.3	Aspect . . . . .	6
2.4	Star Slots . . . . .	9
2.4.1	Slot 3 . . . . .	9
2.4.2	Slot 4 . . . . .	10
2.4.3	Slot 5 . . . . .	11
2.4.4	Slot 6 . . . . .	12
2.4.5	Slot 7 . . . . .	13
2.5	FID Slots . . . . .	14
2.5.1	Slot 0 . . . . .	14
2.5.2	Slot 1 . . . . .	15
2.5.3	Slot 2 . . . . .	16
<b>A</b>	<b>Summary</b>	<b>17</b>
A.1	Status . . . . .	17
A.2	Comments . . . . .	17

# 1 Front

seq_num	900936	Sequence number
obs_id	12123	Observation id
title	The Chandra Deep Field-South Survey: An Ultradeep Chandra Legacy	P
observer	Dr. Harvey Tananbaum	Principal investigator
object	Chandra Deep Field-South	Source name
dtcycle	0	&#160
cycle	P	events from which exps? Prim/Second/Both
ra_targ	53.12	Observer's specified target RA [deg]
dec_targ	-27.806389	Observer's specified target Dec [deg]
ra_nom	53.119928663137	Nominal RA [deg]
dec_nom	-27.814458388744	Nominal Dec [deg]
roll_nom	252.20865119244	Nominal Roll [deg]
revision	2	Processing version of data
ontime	25118.040869176	Sum of GTIs [s]
livetime	24789.855173588	Livetime [s]
ontime0	25114.776788831	Sum of GTIs [s]
ontime1	25114.817798913	Sum of GTIs [s]
ontime2	25105.436027646	Sum of GTIs [s]
ontime3	25118.040869176	Sum of GTIs [s]
ontime6	25114.735738754	Sum of GTIs [s]
l2events	88816	Number of level 2 events

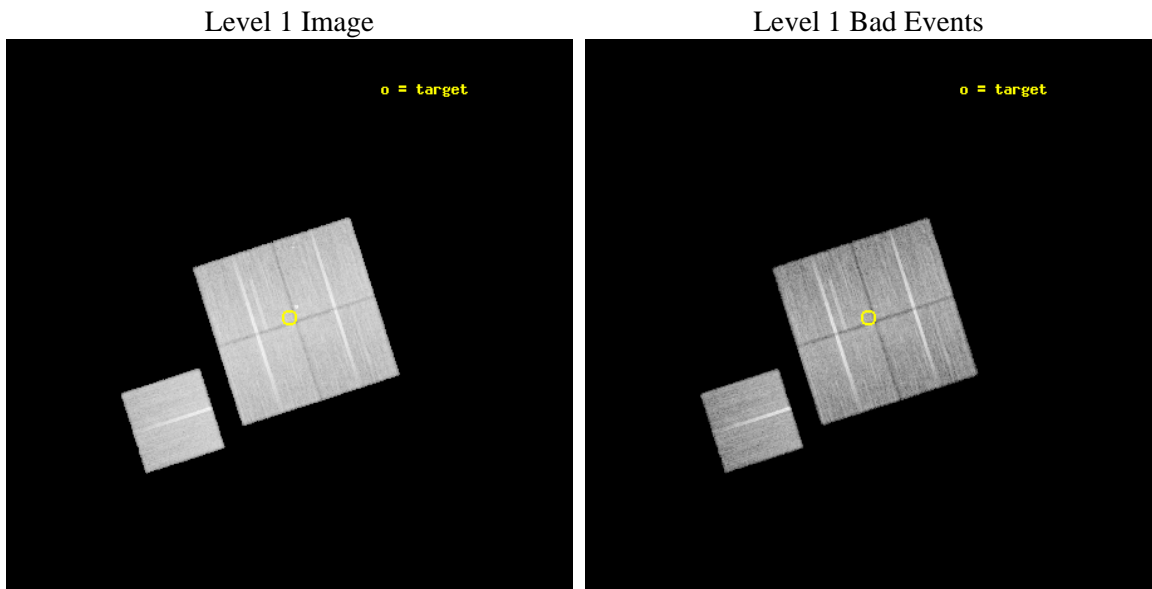




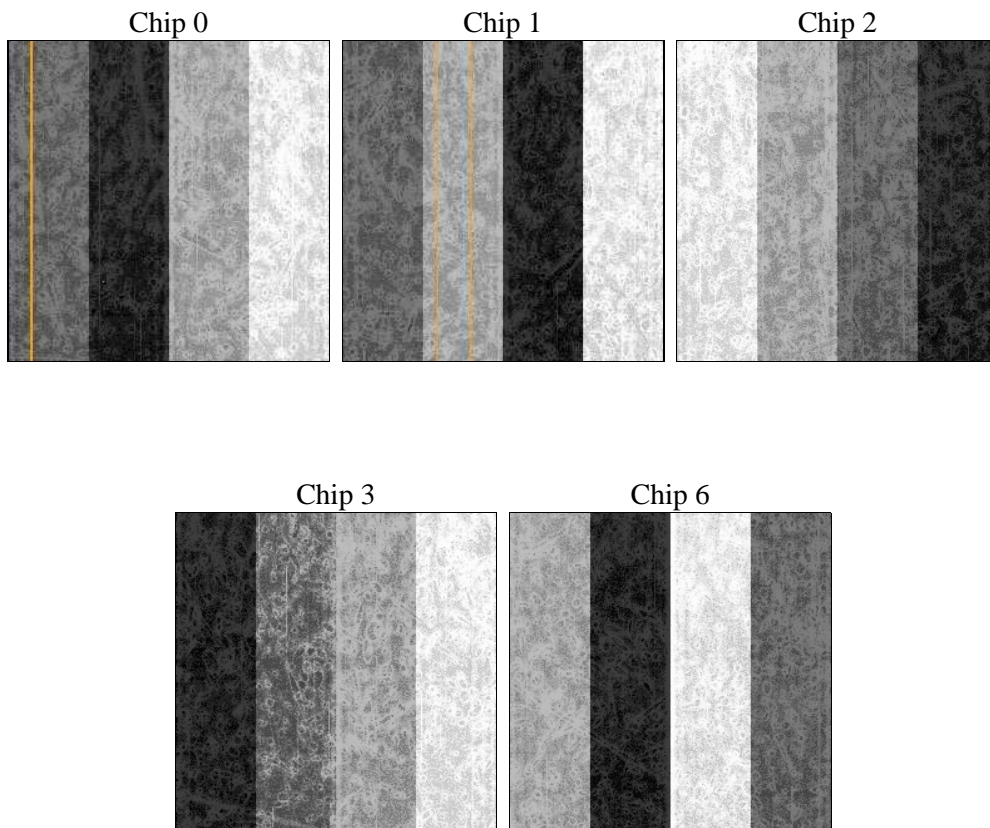
## 2 OBI

### 2.1 OBI

#### 2.1.1 Images



#### 2.1.2 Bias



### 2.1.3 Parameters

obi_num	0	Obi number	sched_exp_time	25000.000000	[s] Scheduled observation exposure time
ascdsver	8.4.5	Processing system revision	ontime	25118.040869176	Sum of GTIs [s]
caldbver	4.4.10	&#160	ontime0	25114.776788831	Sum of GTIs [s]
date	2012-06-23T05:20:04	Date and time of file creation	ontime1	25114.817798913	Sum of GTIs [s]
revision	2	Processing version of data	ontime2	25105.436027646	Sum of GTIs [s]
			ontime3	25118.040869176	Sum of GTIs [s]
			ontime6	25114.735738754	Sum of GTIs [s]
			l1events	957384	Number of level 1 events

### 2.1.4 Events

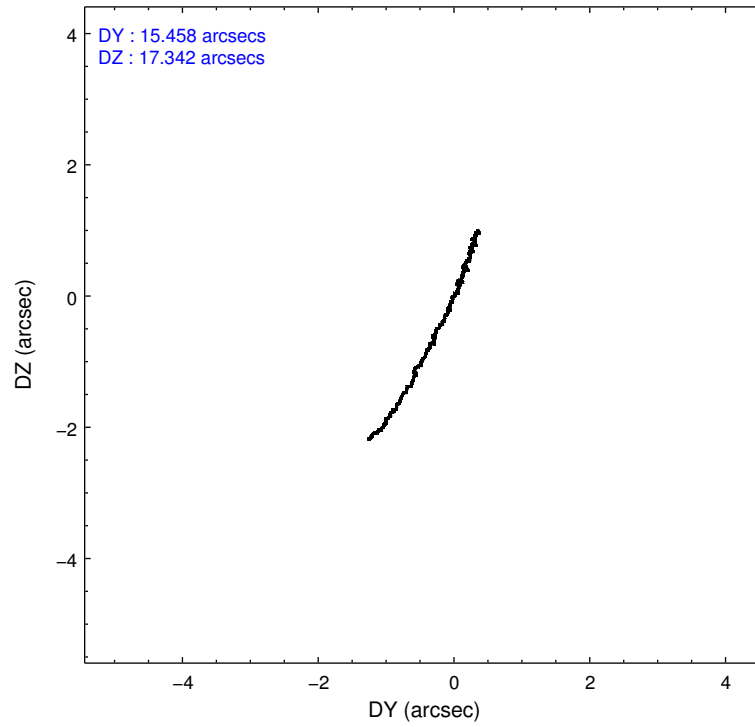
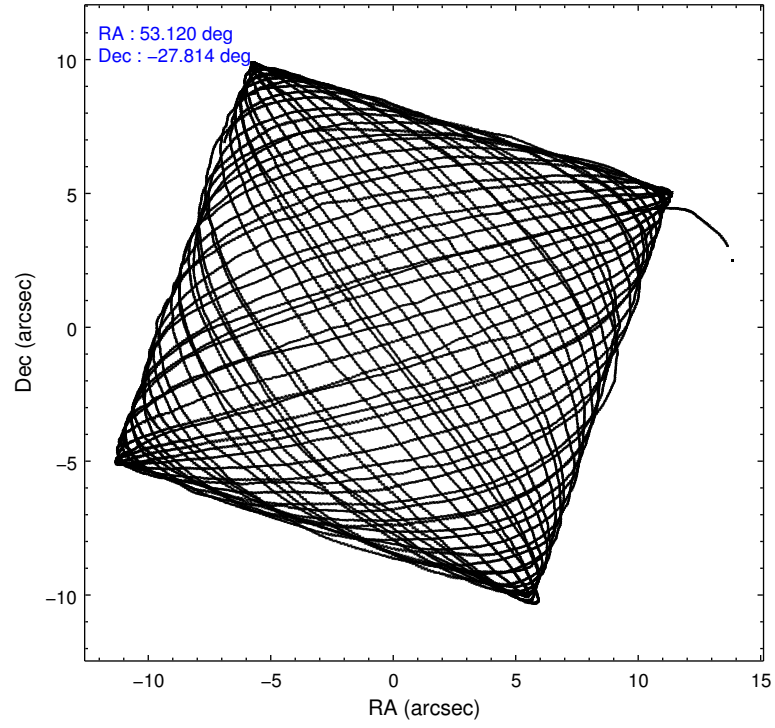
	ccd 0	ccd 1	ccd 2	ccd 3	ccd 6
level 1 events	180014	189944	198052	194886	194488
rejected events	158995	165035	177651	175173	173161
rejected %	88%	86%	89%	89%	89%

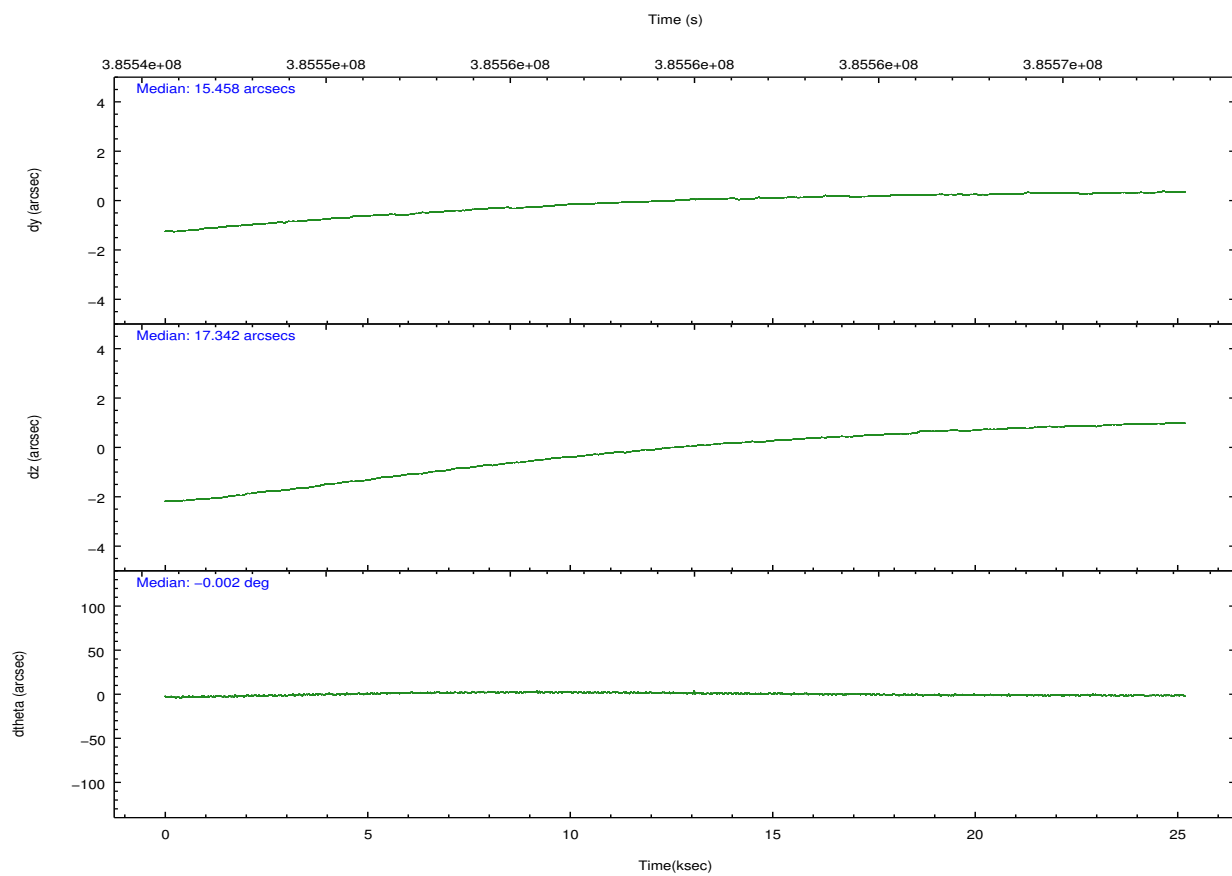
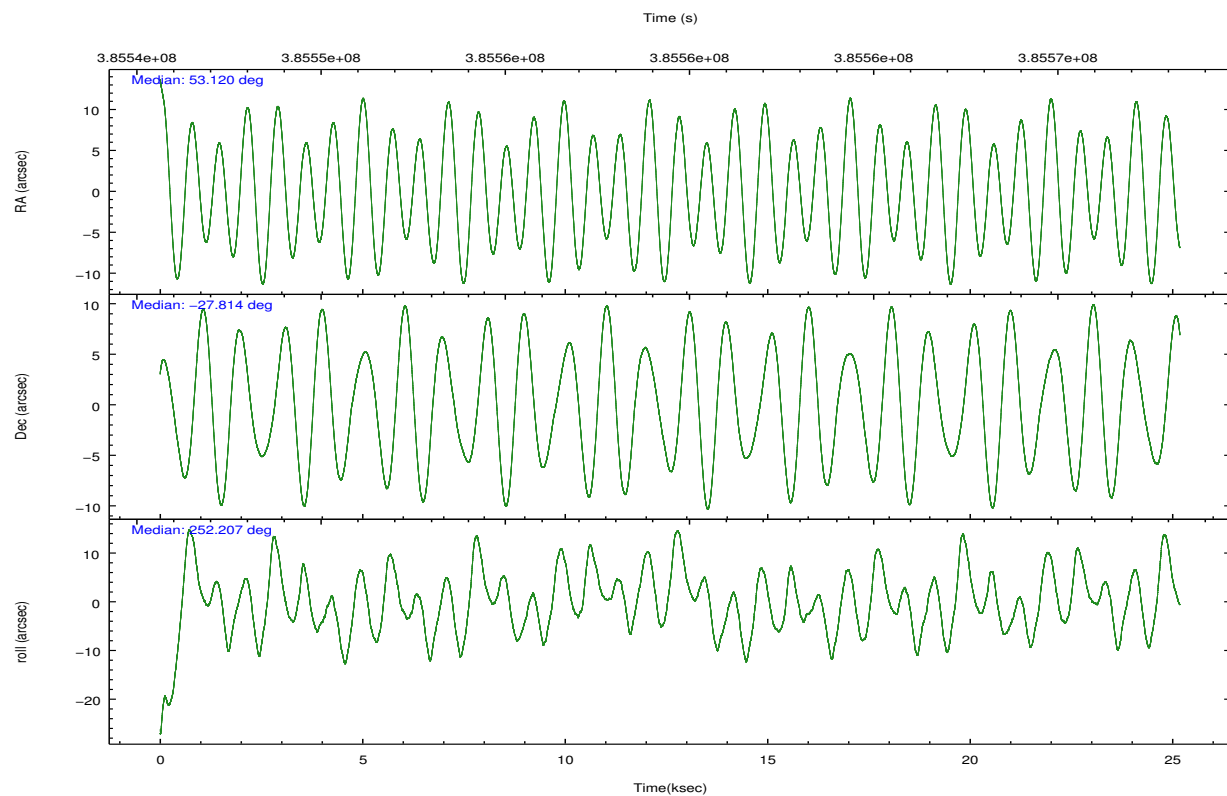
	ccd 0	ccd 1	ccd 2	ccd 3	ccd 6
grade 0 events	7118	9504	7132	6772	7392
	3%	5%	3%	3%	3%
grade 1 events	111	159	135	122	94
	0%	0%	0%	0%	0%
grade 2 events	5303	5539	5009	4326	4751
	2%	2%	2%	2%	2%
grade 3 events	2318	2498	2190	2312	2278
	1%	1%	1%	1%	1%
grade 4 events	2187	2359	2137	2162	2193
	1%	1%	1%	1%	1%
grade 5 events	7665	8286	7312	8870	8367
	4%	4%	3%	4%	4%
grade 6 events	4096	5014	3936	4146	4713
	2%	2%	1%	2%	2%
grade 7 events	151216	156585	170201	166176	164700
	84%	82%	85%	85%	84%

## 2.2 Compared Parameters

Parameter	Planned	Actual	Parameter	Planned	Actual
Instrument	ACIS	ACIS	Obspar format version number	7	7
Detector	ACIS-01236	ACIS-01236	Obspar file type	PREDICTED	ACTUAL
Grating	NONE	NONE	Obspar update status	NONE	UPDATED
Data mode	VFAINT	VFAINT	CCD I0 on	Y	Y
Observation mode	POINTING	POINTING	CCD I1 on	Y	Y
[deg] Pointing RA	53.113228	53.11992866313724	CCD I2 on	Y	Y
[deg] Pointing Dec	-27.787612	-27.81445838874371	CCD I3 on	Y	Y
[deg] Pointing Roll	251.996843	252.2086511924379	CCD S0 on	N	N
[mm] SIM focus pos	-0.782348	-0.7809083437167272	CCD S1 on	N	N
[mm] SIM defocus	0	0.001439871863259334	CCD S2 on	O1	Y
[mm] SIM translation stage pos	-233.592463	-233.5874344608287	CCD S3 on	N	N
[mm] SIM translation stage offset	0	-0.005018542100998502	CCD S4 on	N	N
[s] Observation start time (MET)	385547058.184000	385546095.63402	CCD S5 on	N	N
Observation start date	2010-03-21T08:23:12	2010-03-21T08:08:15	Number of optional ACIS chips dropped	0	0
[s] Observation end time (MET)	385572058.184000	385573136.16039	On-chip summing requested	N	N
Observation end date	2010-03-21T15:19:52	2010-03-21T15:38:56	Subarray requested	NONE	NONE
Read mode	TIMED	TIMED	Alternating exposures requested	N	N
			[s] Primary exposure time	0.000000	3.1

## 2.3 Aspect



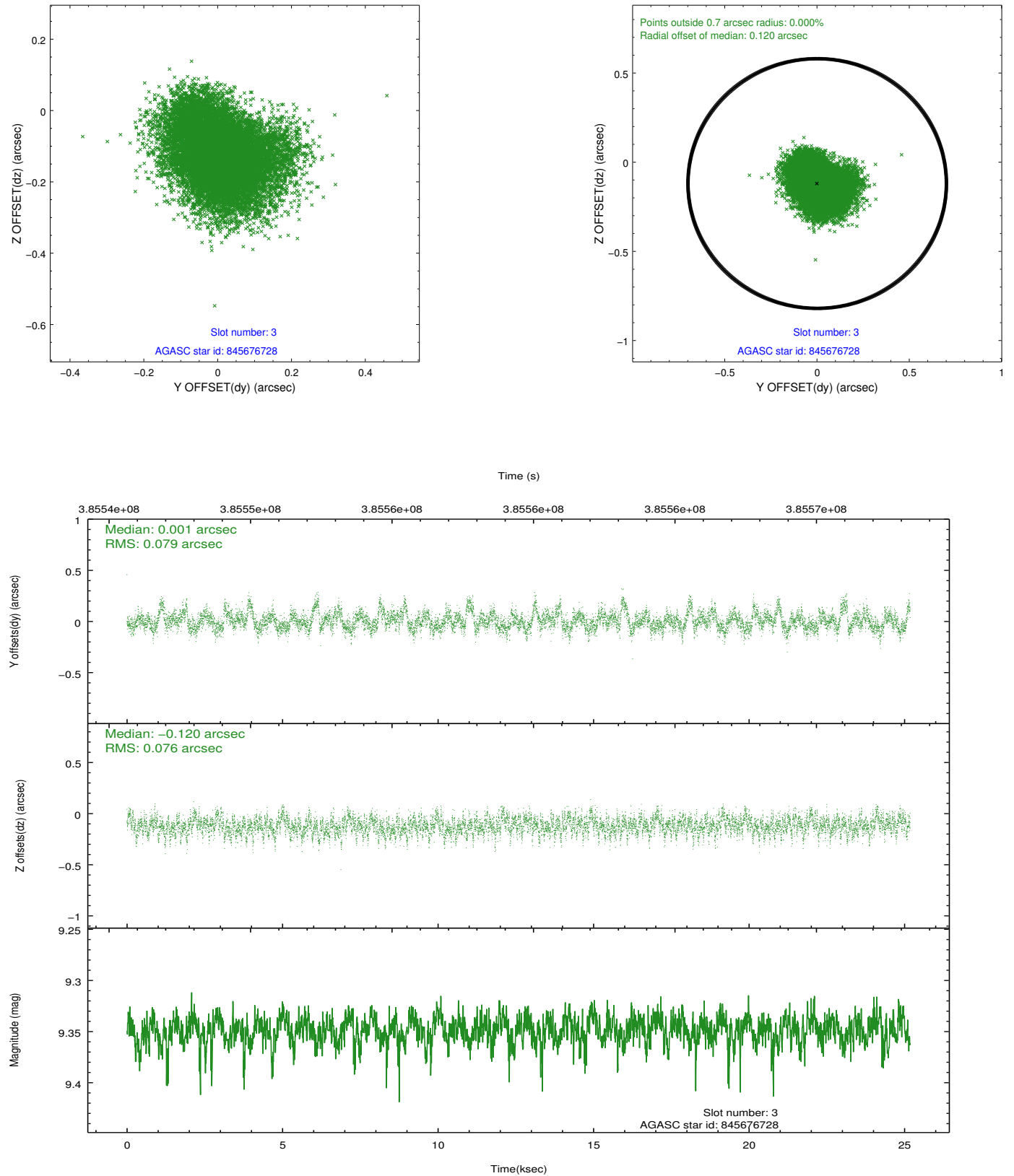


### Slot Statistics

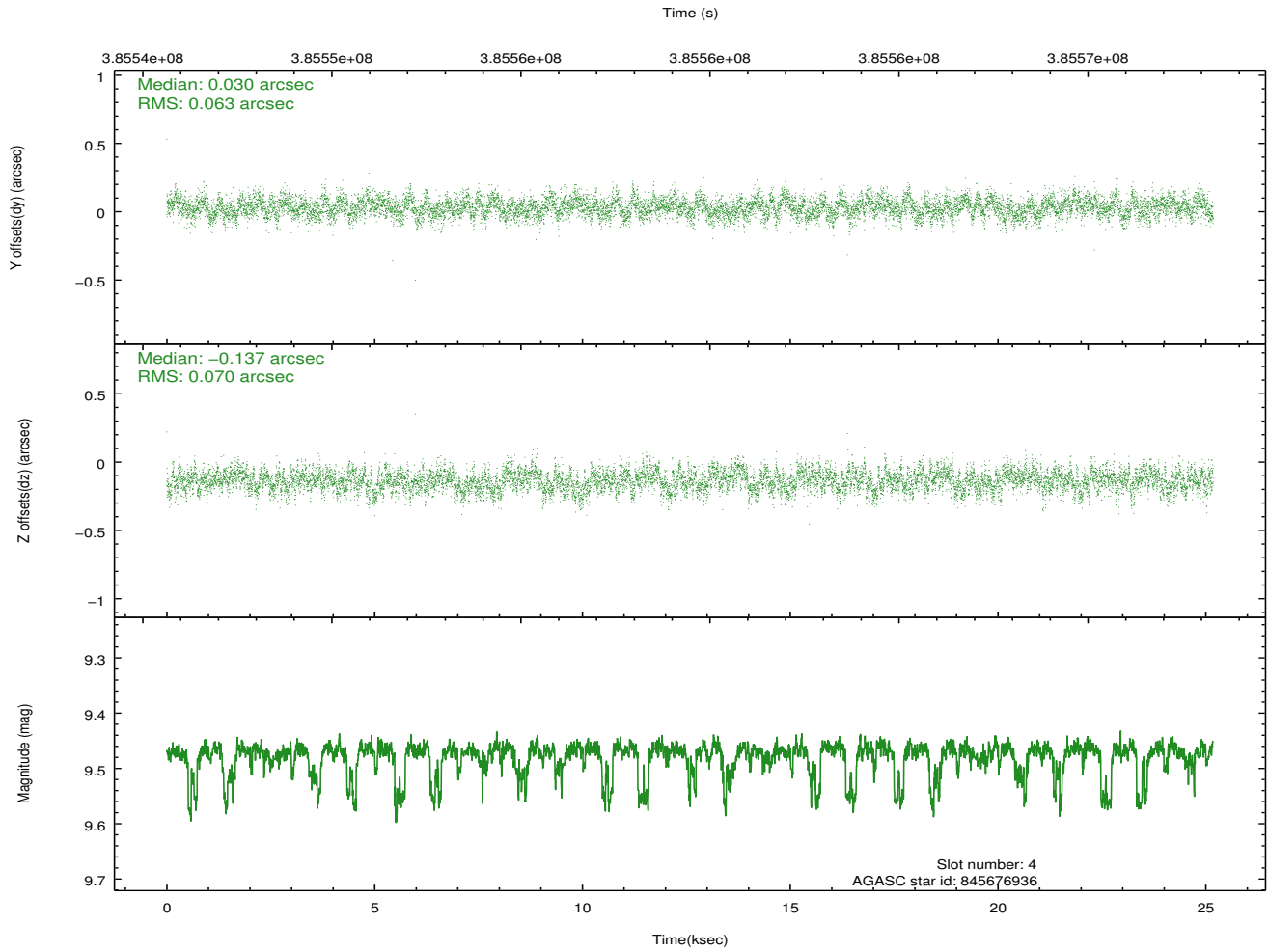
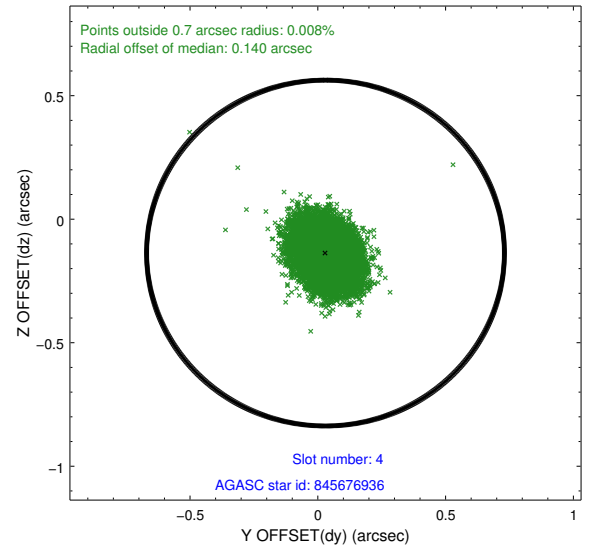
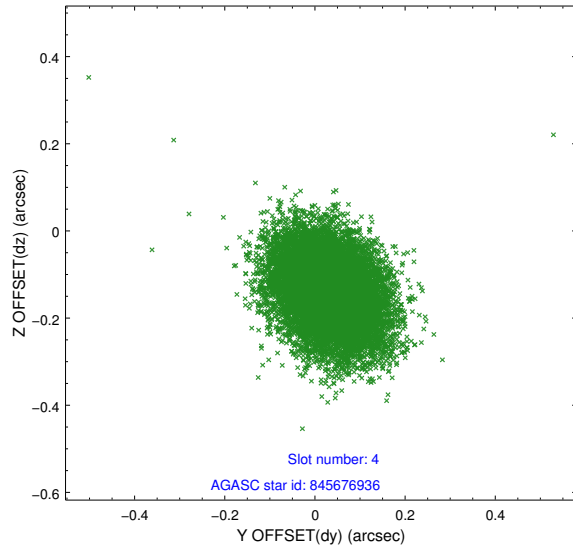
slot	status	id	mag	n_pts	med_dy	med_dz	dr1	dr2	ra	dec	mean_y	mean_z
0	FID	ACIS-I-1	7.04	6142	0.050	-0.004	0.031	0.049	0.000000	0.000000	924.20	-840.76
1	FID	ACIS-I-5	7.03	6141	-0.212	0.057	0.014	0.021	0.000000	0.000000	-1824.09	1056.75
2	FID	ACIS-I-6	7.04	6142	0.070	0.013	0.031	0.045	0.000000	0.000000	389.65	1701.34
3	GUIDE	845676728	9.35	12257	0.001	-0.120	0.117	0.193	52.877179	-27.664318	-188.43	-852.59
4	GUIDE	845676936	9.47	12231	0.030	-0.137	0.099	0.162	52.843773	-27.880153	582.89	-711.79
5	GUIDE	845807880	8.80	12276	-0.260	-0.124	0.092	0.164	53.382027	-27.886093	73.82	923.39
6	GUIDE	845417688	9.94	12263	-0.136	0.131	0.164	0.264	54.025245	-27.354040	-2375.44	2294.78
7	GUIDE	845816224	10.20	12234	0.358	0.261	0.174	0.286	53.578992	-28.631005	2435.90	2339.92

## 2.4 Star Slots

### 2.4.1 Slot 3

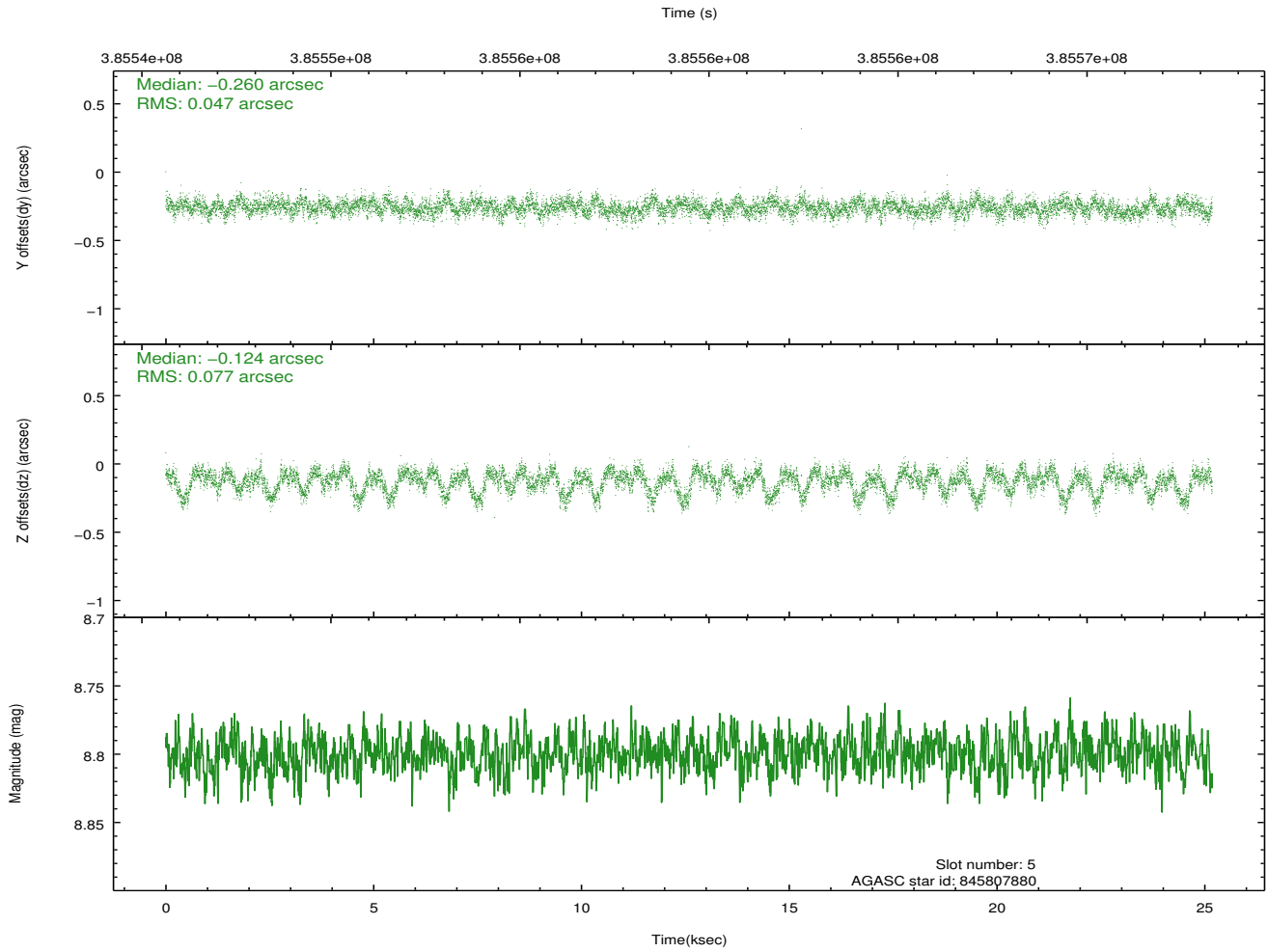
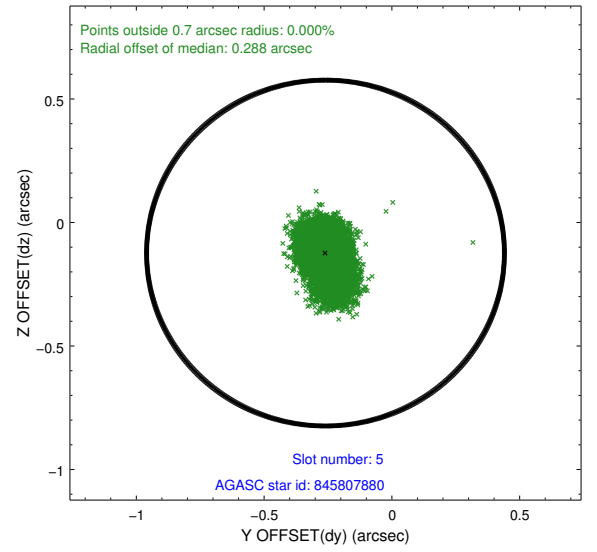
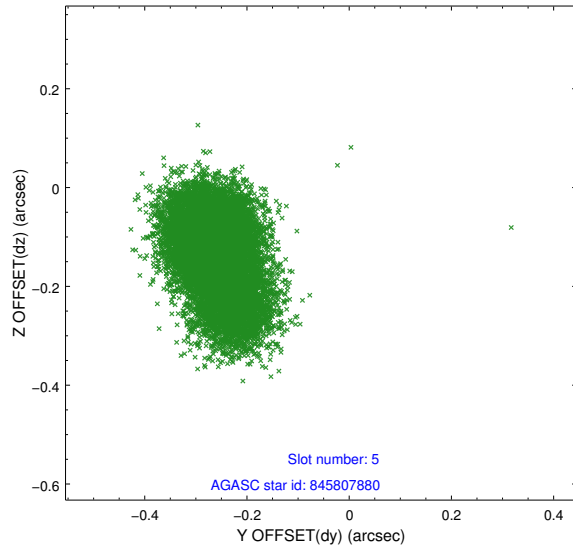


## 2.4.2 Slot 4

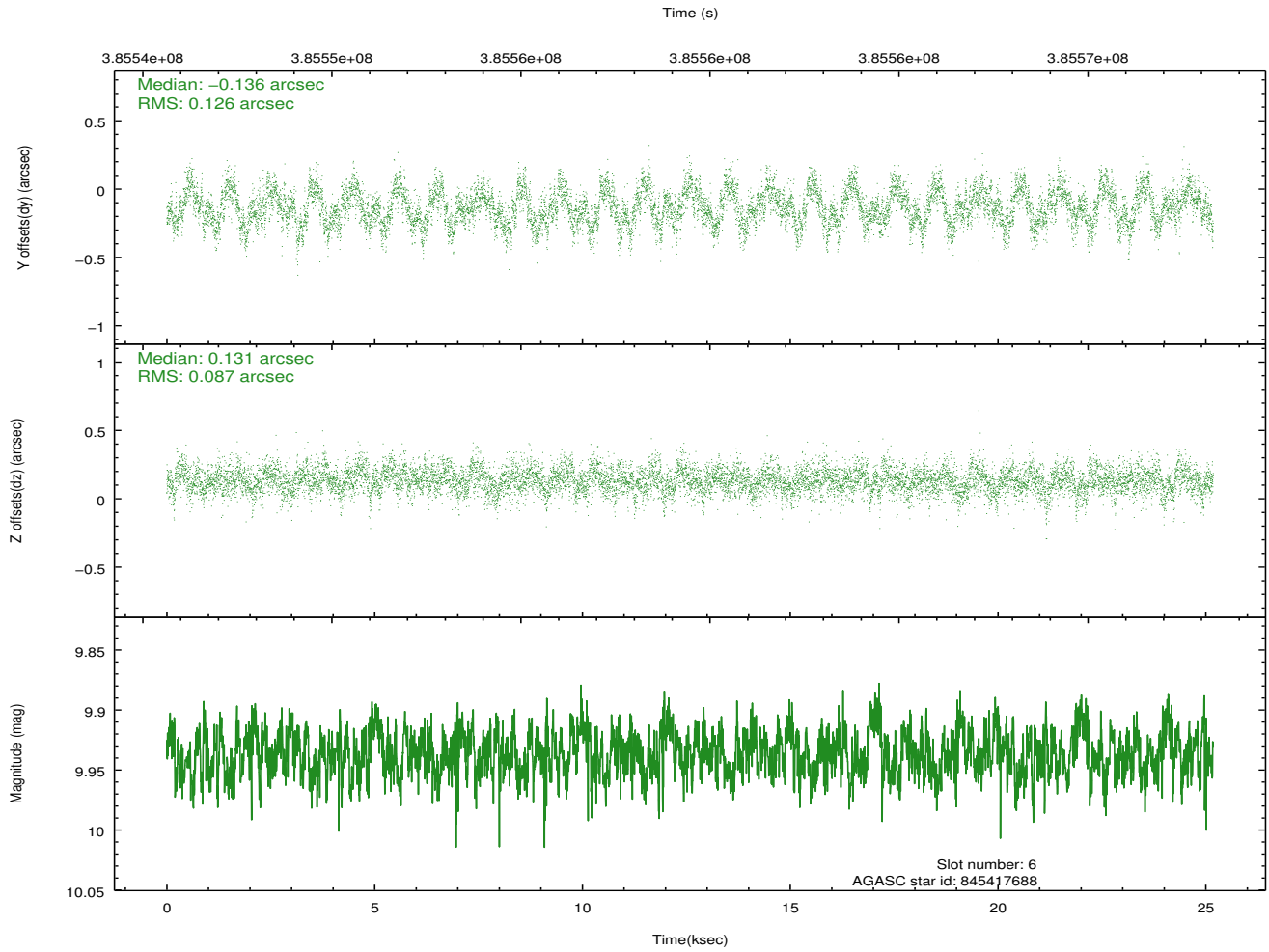
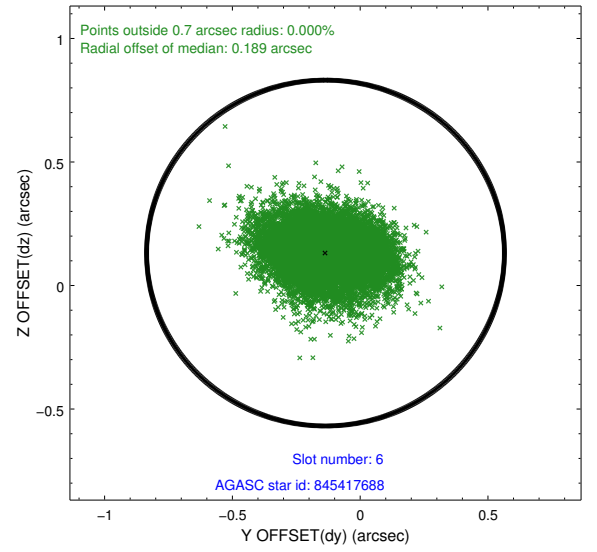
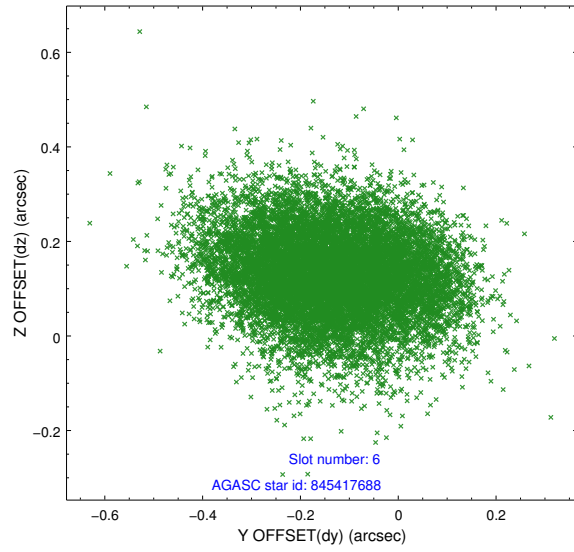




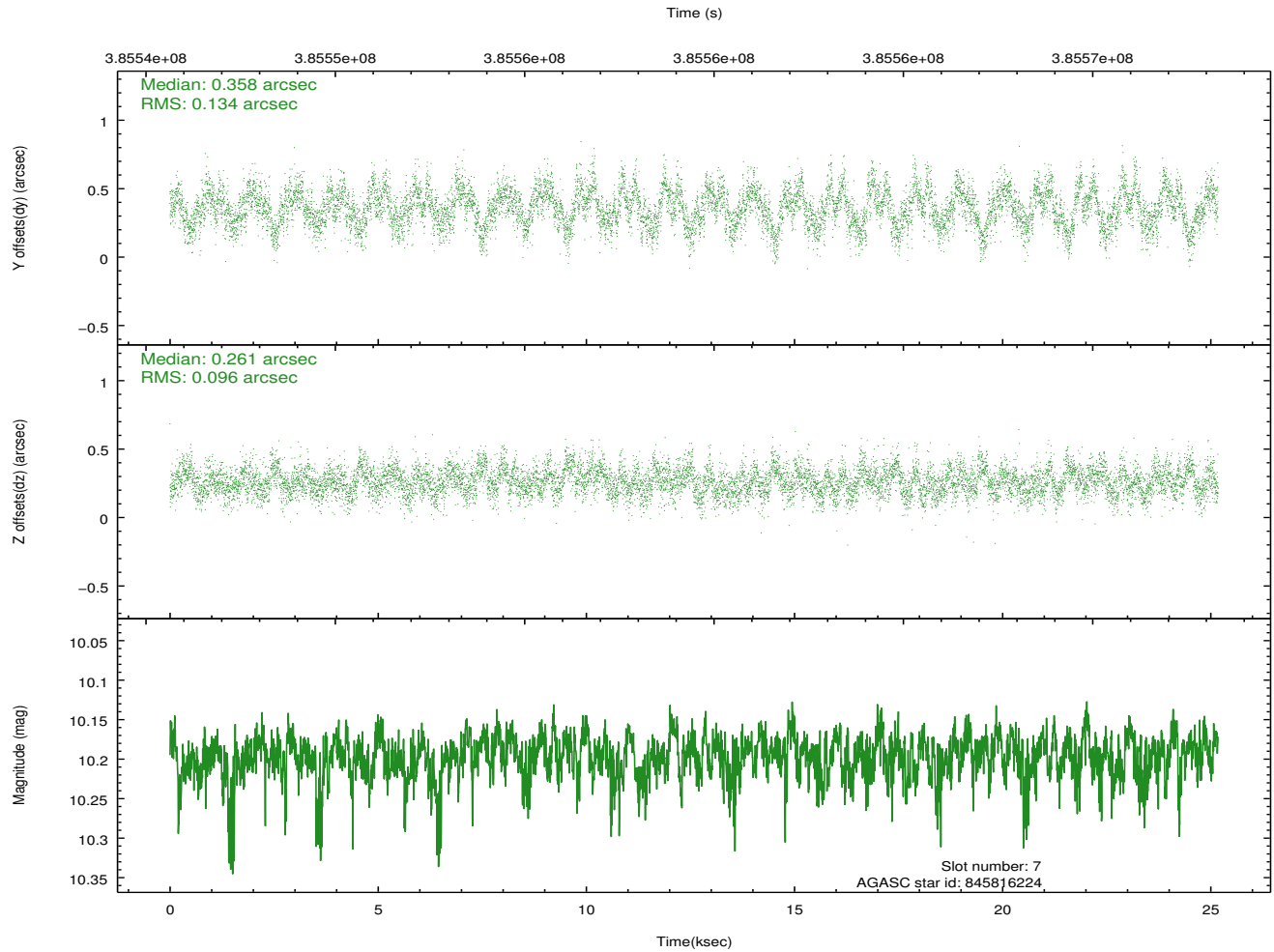
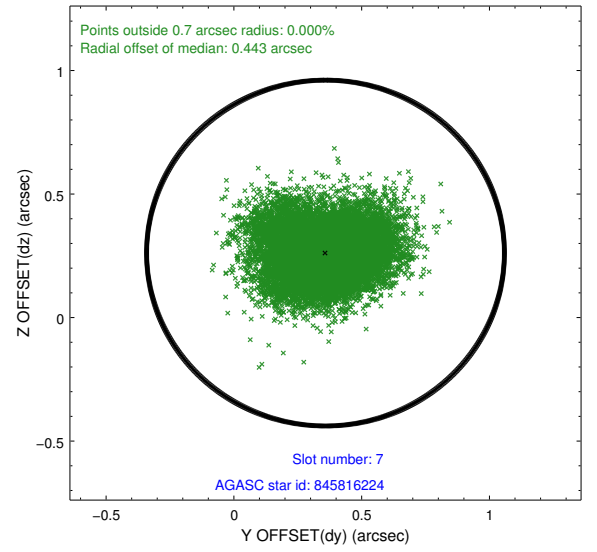
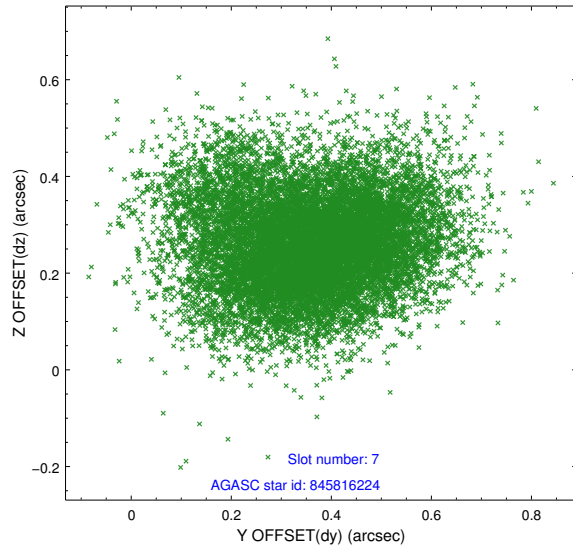
### 2.4.3 Slot 5



## 2.4.4 Slot 6

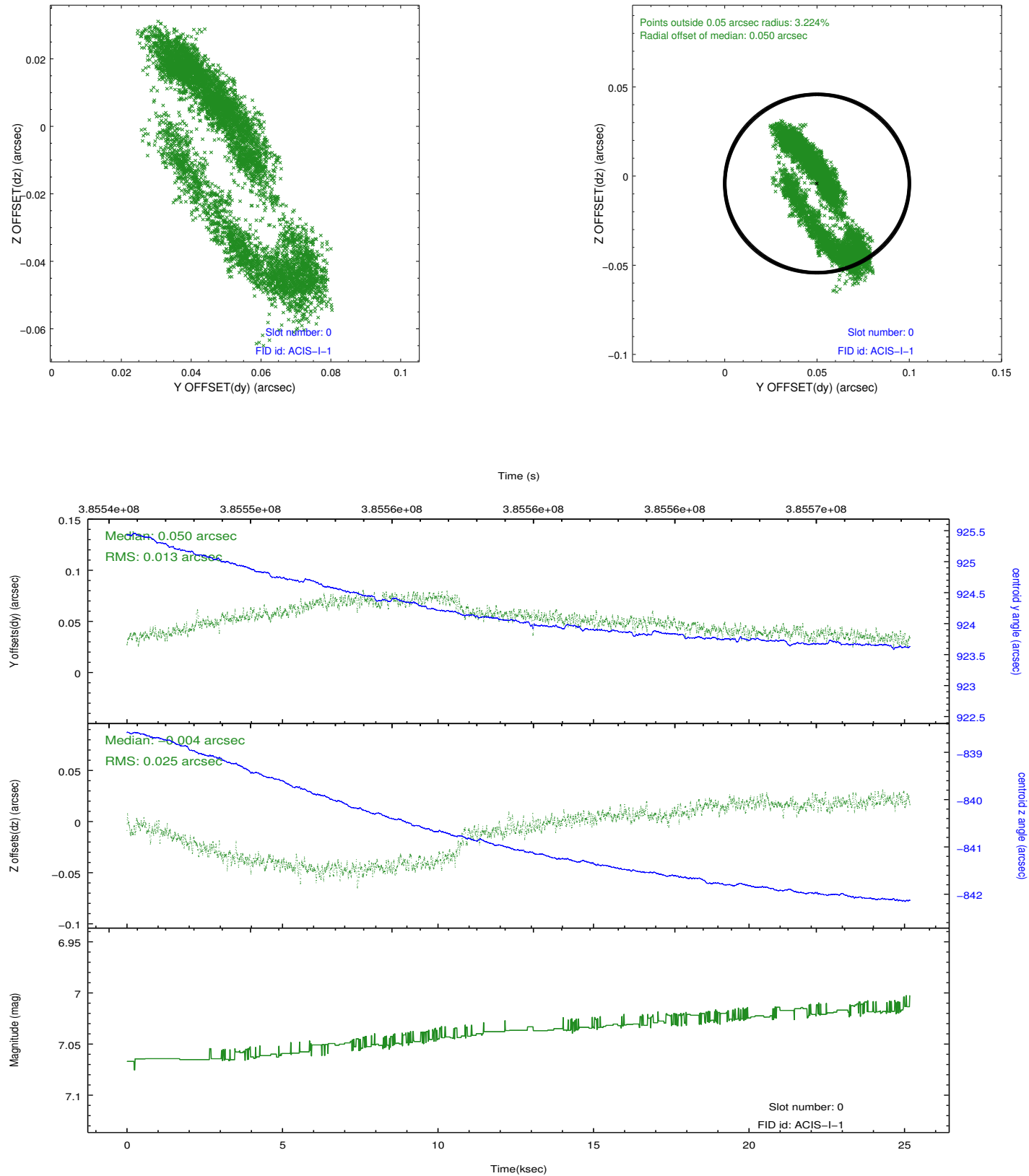


## 2.4.5 Slot 7

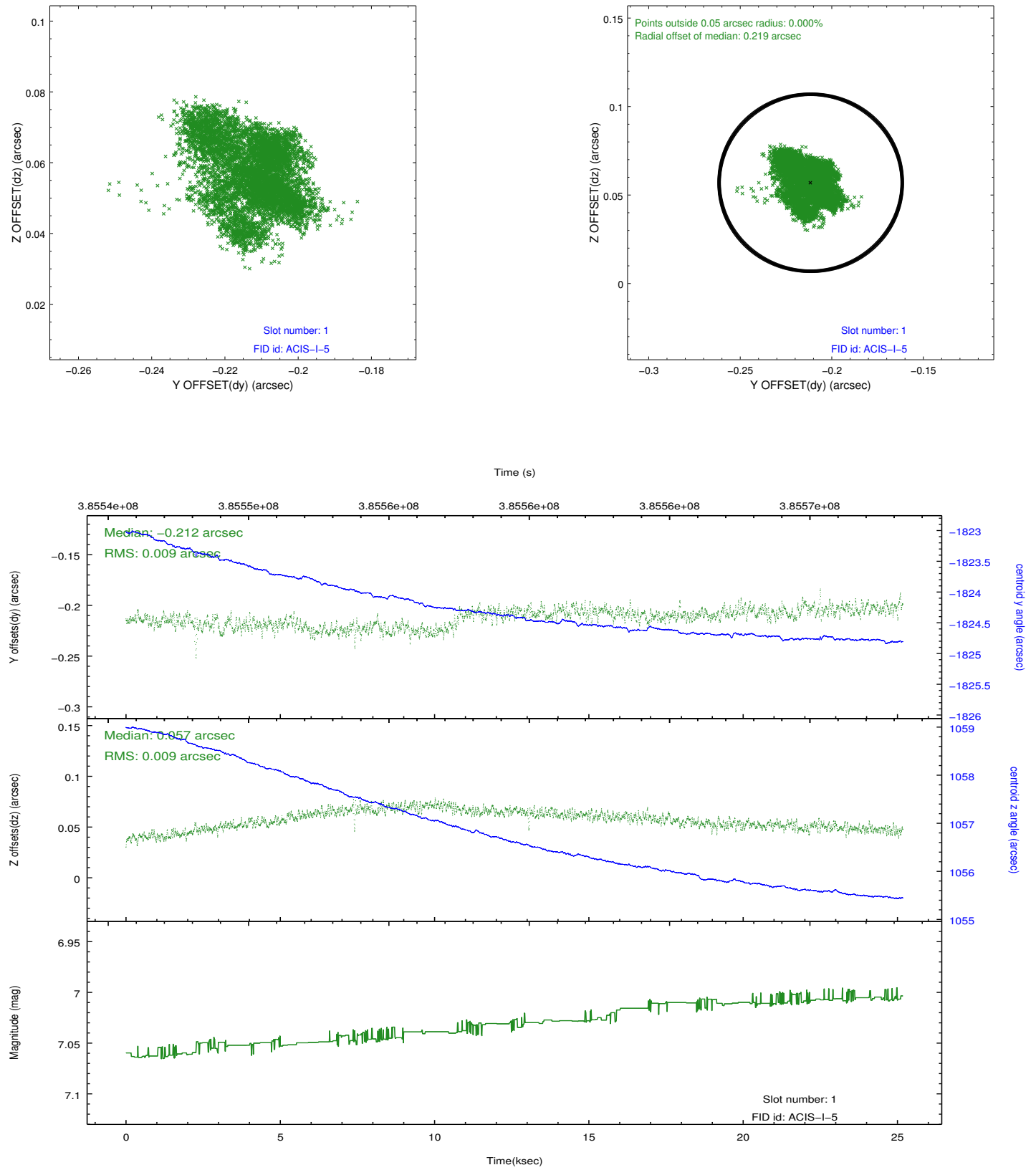


## 2.5 FID Slots

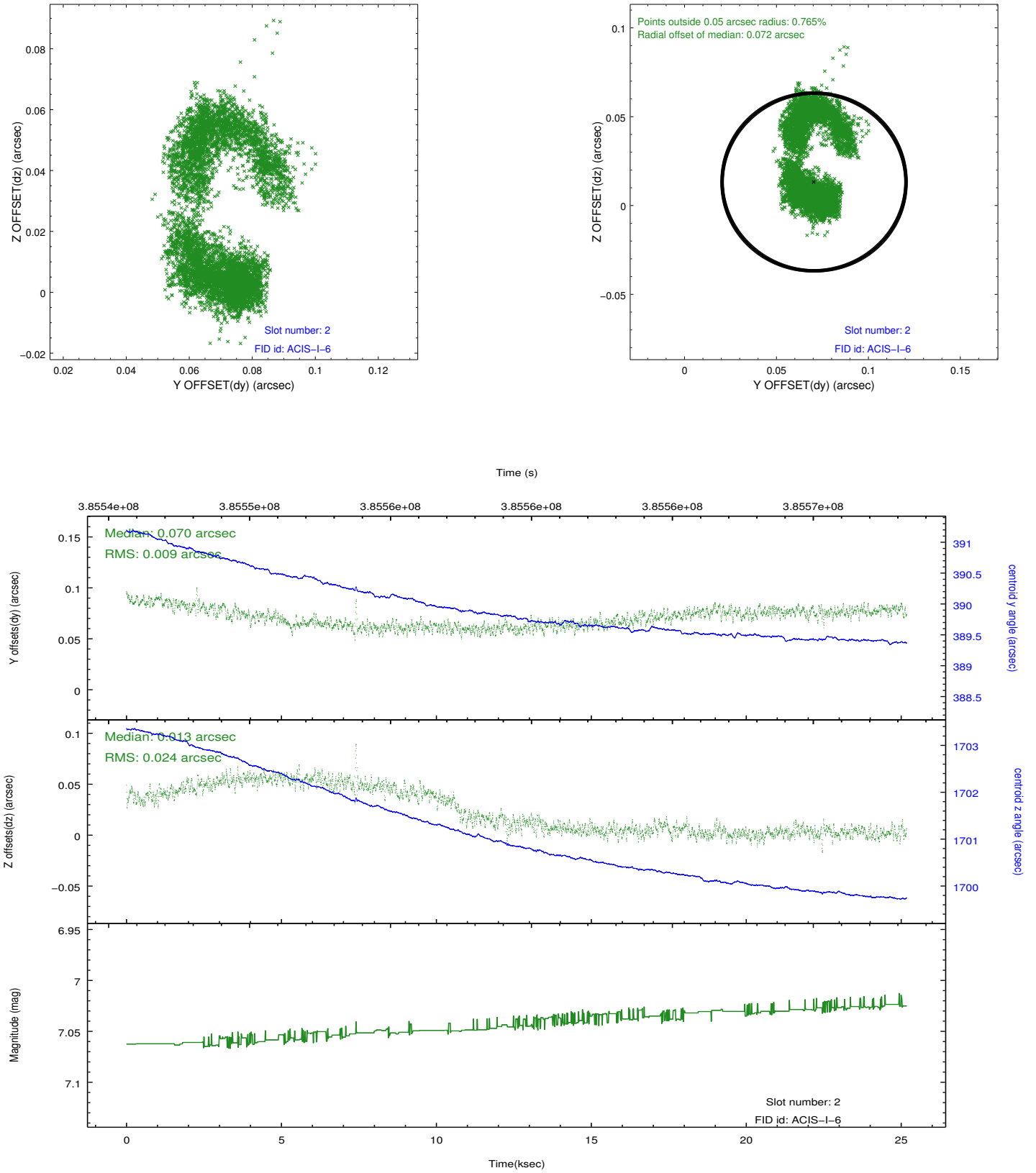
### 2.5.1 Slot 0



## 2.5.2 Slot 1



### 2.5.3 Slot 2



## A Summary

### A.1 Status

V&V Scientist	Jen Lauer
V&V Date (YYYY-MM-DD)	2012.06.29
V&V Edition	1
V&V Disposition and Status	OK
V&V Charge Time	25.118040862978

### A.2 Comments