

# V&V Reference Report

## L2 ASCDS Version : 8.4.4

Observation 9317 - L2 Version 2  
Chandra X-Ray Center

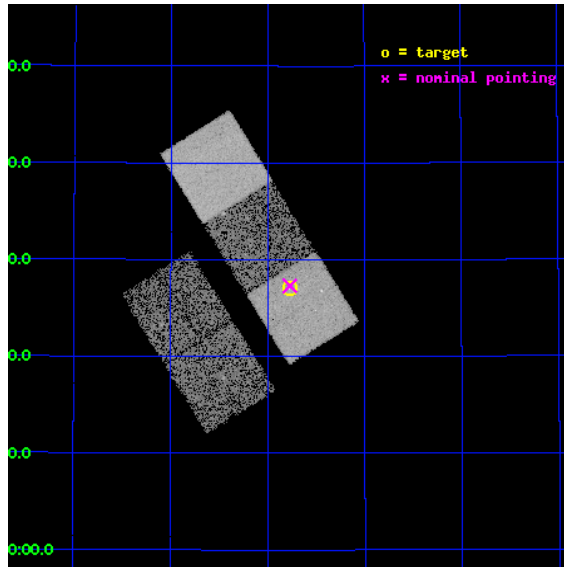
L2 Processing Date : May 10 2012

## Contents

<b>1</b>	<b>Front</b>	<b>2</b>
<b>2</b>	<b>OBI</b>	<b>3</b>
2.1	OBI . . . . .	3
2.1.1	Images . . . . .	3
2.1.2	Bias . . . . .	3
2.1.3	Parameters . . . . .	4
2.1.4	Events . . . . .	4
2.2	Compared Parameters . . . . .	5
2.3	Aspect . . . . .	6
2.4	Star Slots . . . . .	9
2.4.1	Slot 3 . . . . .	9
2.4.2	Slot 4 . . . . .	10
2.4.3	Slot 5 . . . . .	11
2.4.4	Slot 6 . . . . .	12
2.4.5	Slot 7 . . . . .	13
2.5	FID Slots . . . . .	14
2.5.1	Slot 0 . . . . .	14
2.5.2	Slot 1 . . . . .	15
2.5.3	Slot 2 . . . . .	16
<b>A</b>	<b>Summary</b>	<b>17</b>
A.1	Status . . . . .	17
A.2	Comments . . . . .	17

# 1 Front

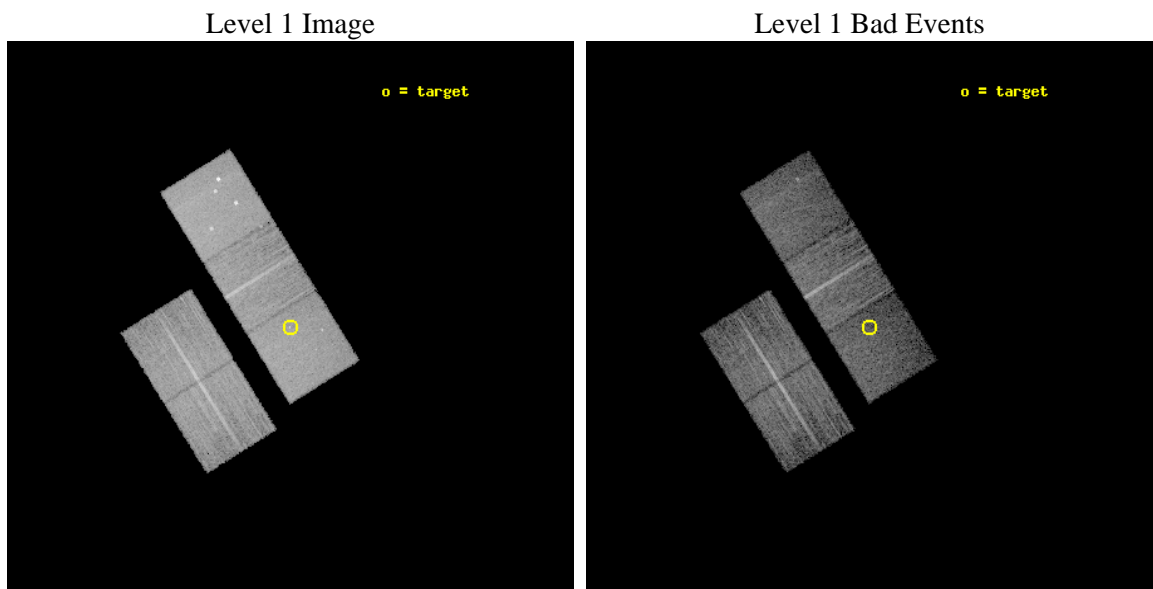
seq_num	701757	Sequence number
obs_id	9317	Observation id
title	Towards a Complete Sample: 3CR Extragalactic Radio Sources with $z < 0.3$	Proposal title
observer	Dr. Daniel Harris	Principal investigator
object	3C381	Source name
dtcycle	0	&#160
cycle	P	events from which exps? Prim/Second/Both
ra_targ	278.4425	Observer's specified target RA [deg]
dec_targ	47.450194	Observer's specified target Dec [deg]
ra_nom	278.44260413723	Nominal RA [deg]
dec_nom	47.455003475147	Nominal Dec [deg]
roll_nom	58.156620397578	Nominal Roll [deg]
revision	2	Processing version of data
ontime	8171.6000628471	Sum of GTIs [s]
livetime	8064.8320921816	Livetime [s]
ontime2	8168.4590325356	Sum of GTIs [s]
ontime3	8171.6000628471	Sum of GTIs [s]
ontime5	8171.6000628471	Sum of GTIs [s]
ontime6	8171.6000628471	Sum of GTIs [s]
ontime7	8171.6000628471	Sum of GTIs [s]
l2events	92609	Number of level 2 events



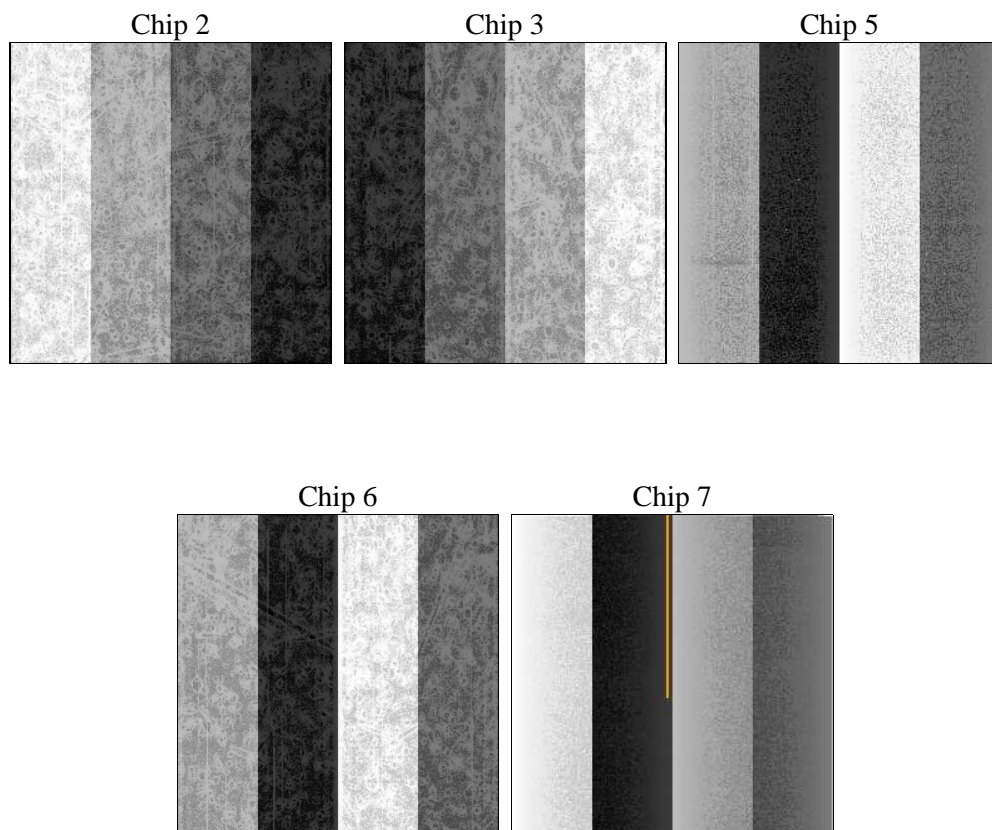
## 2 OBI

### 2.1 OBI

#### 2.1.1 Images



#### 2.1.2 Bias



### 2.1.3 Parameters

obi_num	2	Obi number	sched_exp_time	8000.000000	[s] Scheduled observation exposure time
ascdsver	8.4.4	Processing system revision	ontime	8171.6000628471	Sum of GTIs [s]
caldsver	4.4.9	&#160	ontime2	8168.4590325356	Sum of GTIs [s]
date	2012-05-10T08:12:06	Date and time of file creation	ontime3	8171.6000628471	Sum of GTIs [s]
revision	2	Processing version of data	ontime5	8171.6000628471	Sum of GTIs [s]
			ontime6	8171.6000628471	Sum of GTIs [s]
			ontime7	8171.6000628471	Sum of GTIs [s]
			l1events	382921	Number of level 1 events

### 2.1.4 Events

	ccd 2	ccd 3	ccd 5	ccd 6	ccd 7
level 1 events	68986	66816	98670	71365	77084
rejected events	62520	60505	50033	64492	42883
rejected %	90%	90%	50%	90%	55%

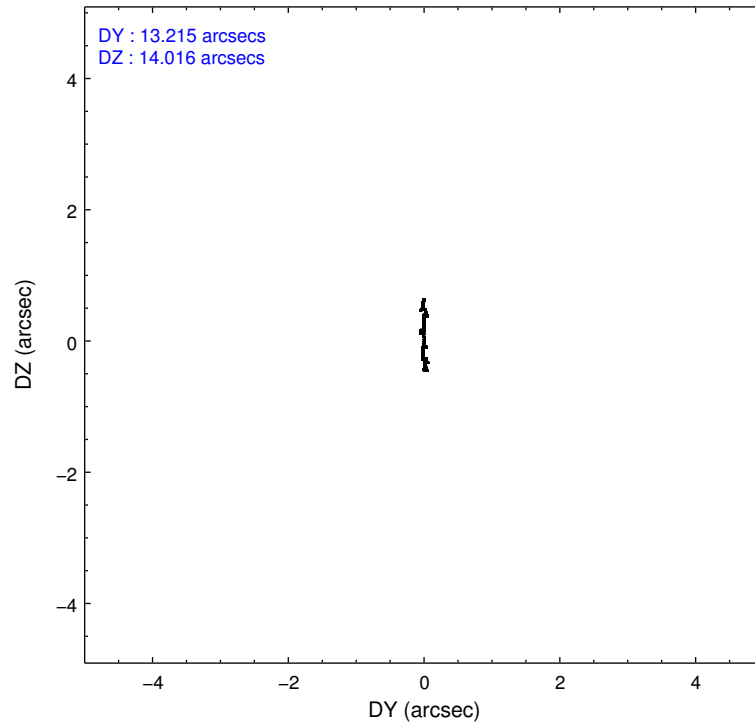
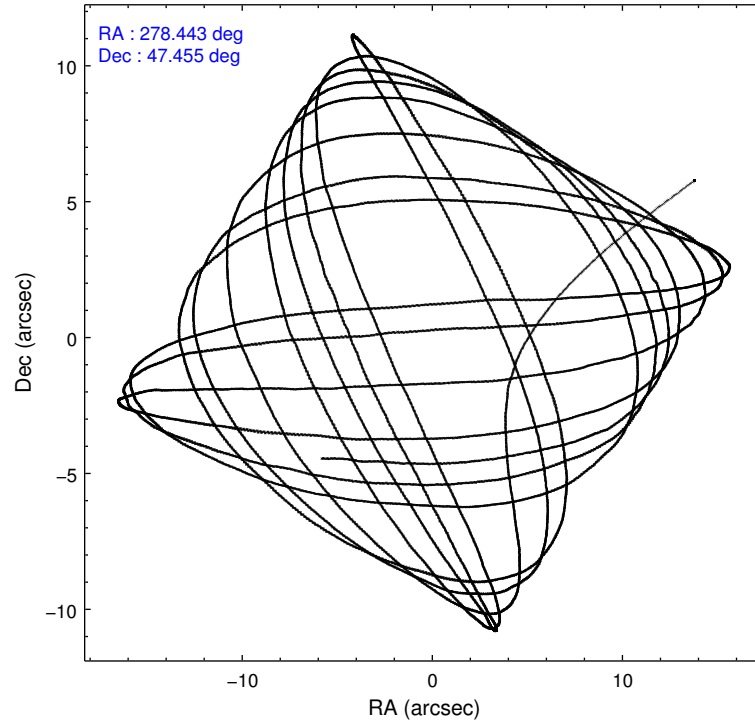
	ccd 2	ccd 3	ccd 5	ccd 6	ccd 7
grade 0 events	2470	2324	7386	2501	3378
	3%	3%	7%	3%	4%
grade 1 events	39	49	424	27	94
	0%	0%	0%	0%	0%
grade 2 events	1566	1378	14487	1493	7007
	2%	2%	14%	2%	9%
grade 3 events	706	738	1814	725	3167
	1%	1%	1%	1%	4%
grade 4 events	700	782	1779	744	3162
	1%	1%	1%	1%	4%
grade 5 events	2266	2755	7026	2701	7717
	3%	4%	7%	3%	10%
grade 6 events	1195	1276	24781	1622	18599
	1%	1%	25%	2%	24%
grade 7 events	60044	57514	40973	61552	33960
	87%	86%	41%	86%	44%

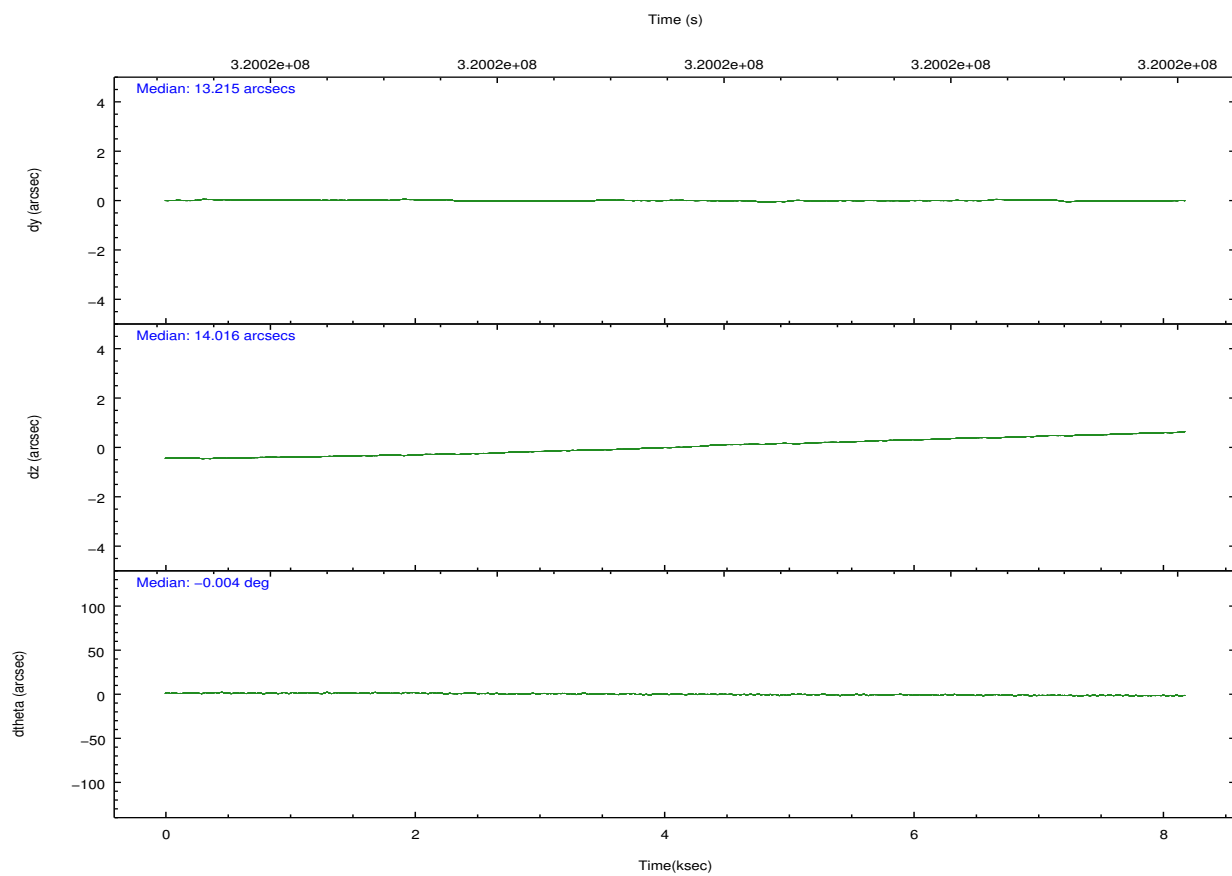
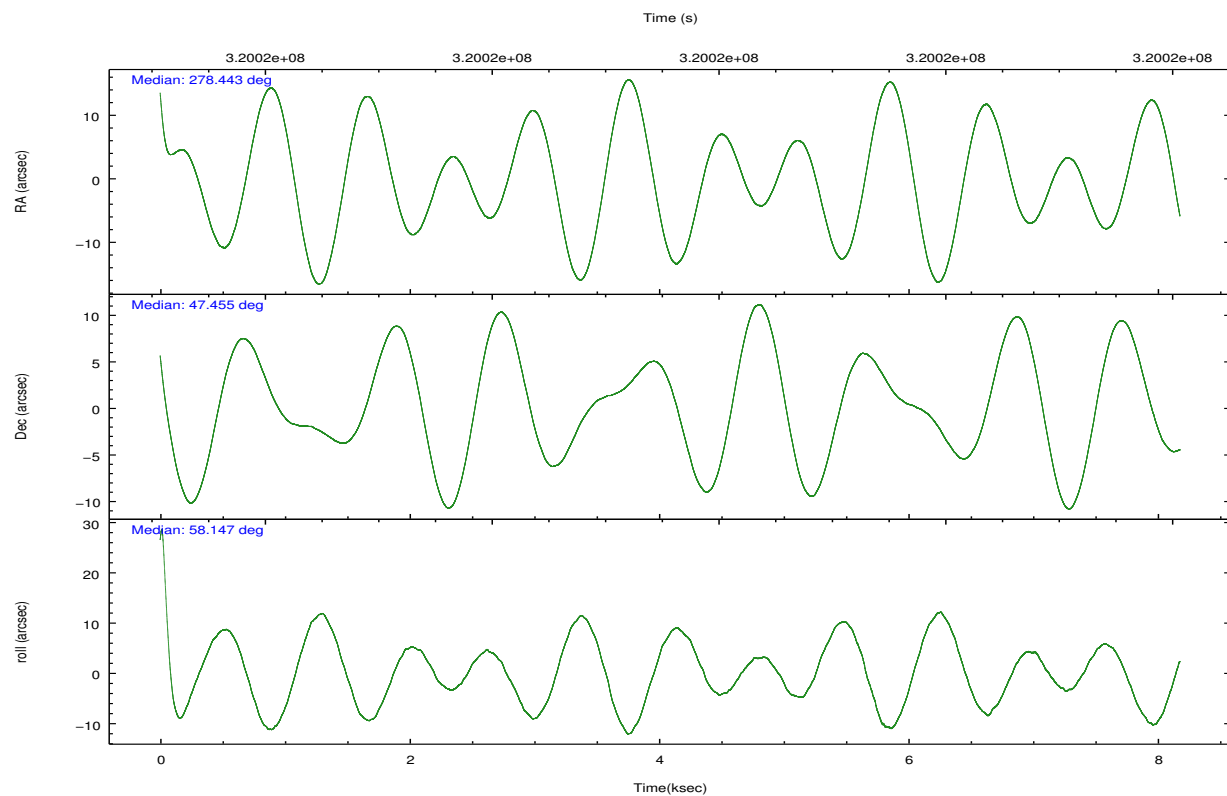


## 2.2 Compared Parameters

Parameter	Planned	Actual	Parameter	Planned	Actual
Instrument	ACIS	ACIS	Obspar format version number	7	7
Detector	ACIS-23567	ACIS-23567	Obspar file type	PREDICTED	ACTUAL
Grating	NONE	NONE	Obspar update status	NONE	UPDATED
Data mode	VFAINT	VFAINT	CCD I0 on	N	N
Observation mode	POINTING	POINTING	CCD I1 on	N	N
[deg] Pointing RA	278.441777	278.4426041372255	CCD I2 on	Y	Y
[deg] Pointing Dec	47.427706	47.45500347514741	CCD I3 on	Y	Y
[deg] Pointing Roll	58.000537	58.15662039757849	CCD S0 on	N	N
[mm] SIM focus pos	-0.684267	-0.6828225247311905	CCD S1 on	O1	Y
[mm] SIM defocus	0	0.001444936568705701	CCD S2 on	Y	Y
[mm] SIM translation stage pos	-190.132523	-190.1425803651734	CCD S3 on	Y	Y
[mm] SIM translation stage offset	0	0.01005778216563158	CCD S4 on	N	N
[s] Observation start time (MET)	320015661.184000	320014536.47021	CCD S5 on	N	N
Observation start date	2008-02-21T21:13:16	2008-02-21T20:55:36	Number of optional ACIS chips dropped	0	0
[s] Observation end time (MET)	320023661.184000	320024250.39568	On-chip summing requested	N	N
Observation end date	2008-02-21T23:26:36	2008-02-21T23:37:30	Subarray requested	NONE	NONE
Read mode	TIMED	TIMED	Alternating exposures requested	N	N
			[s] Primary exposure time	0.000000	3.1

## 2.3 Aspect



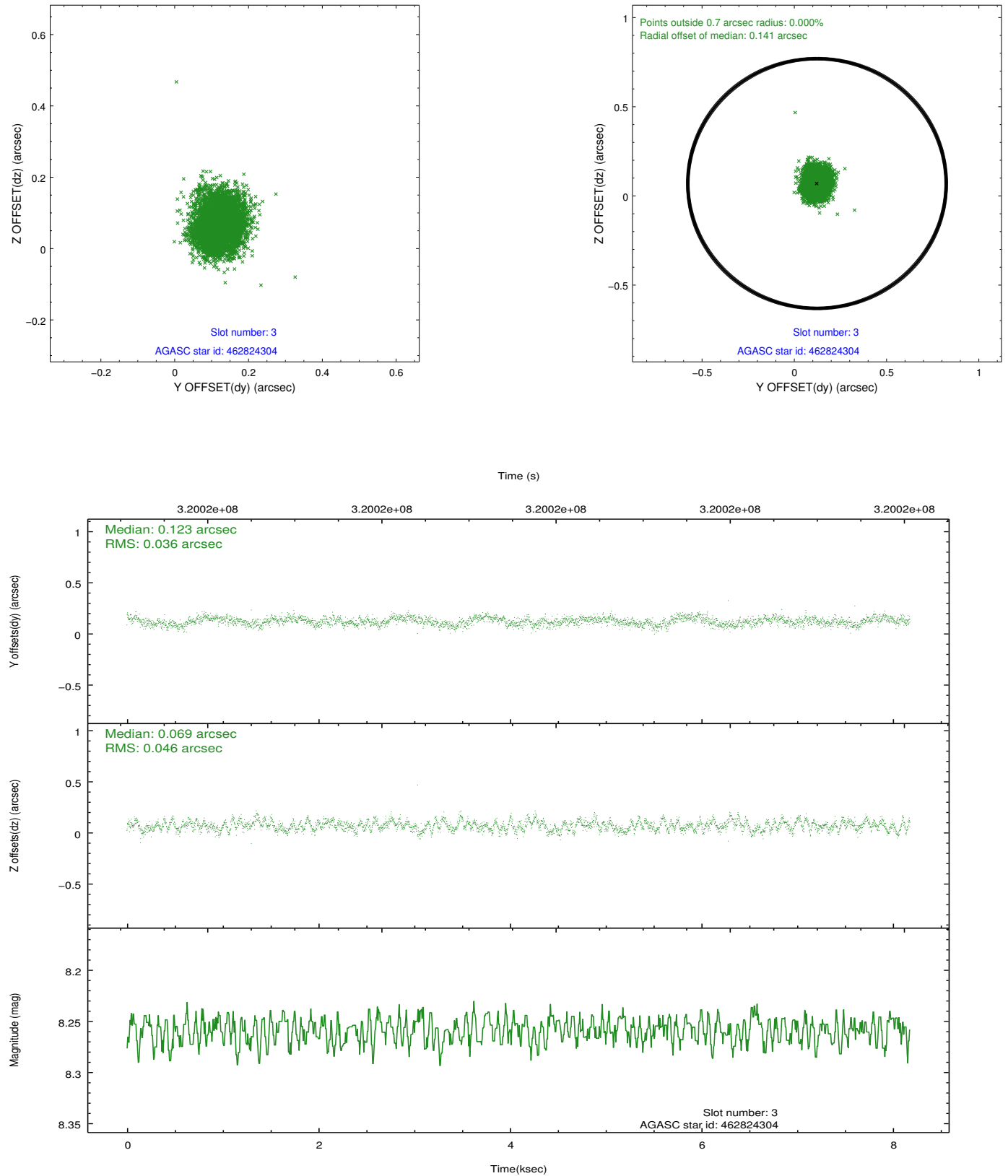


### Slot Statistics

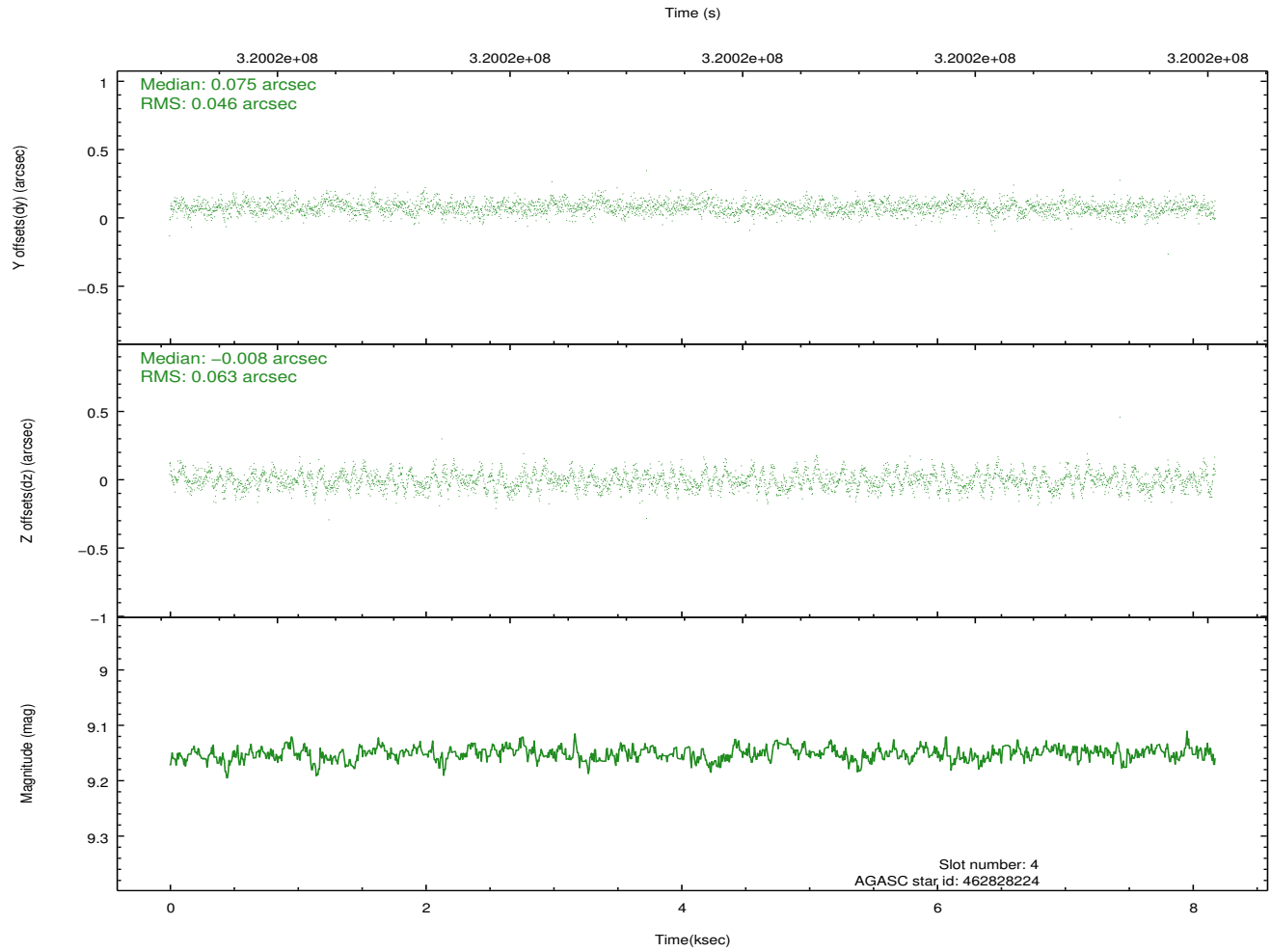
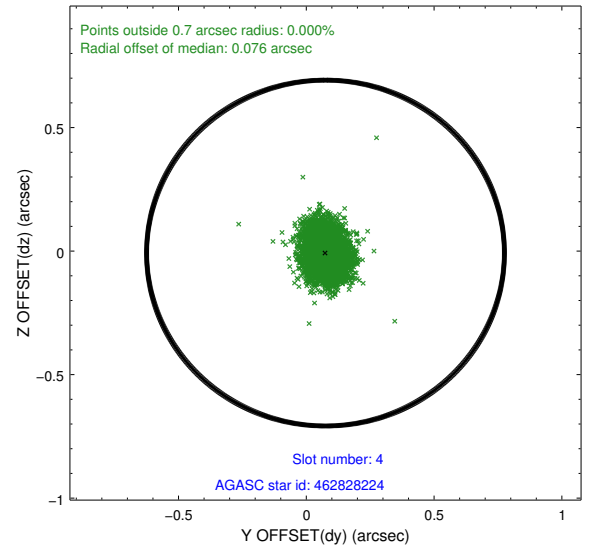
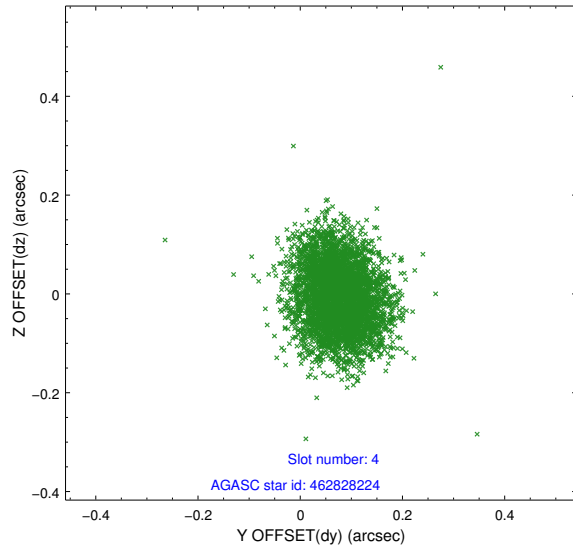
slot	status	id	mag	n_pts	med_dy	med_dz	dr1	dr2	ra	dec	mean_y	mean_z
0	FID	ACIS-S-2	7.10	1995	-0.044	-0.063	0.012	0.019	0.000000	0.000000	-766.17	-1735.41
1	FID	ACIS-S-4	7.19	1995	0.177	0.038	0.009	0.016	0.000000	0.000000	2147.00	172.48
2	FID	ACIS-S-5	7.23	1996	-0.164	0.034	0.011	0.018	0.000000	0.000000	-1818.27	166.90
3	GUIDE	462824304	8.26	3991	0.123	0.069	0.062	0.099	278.947795	47.148629	-191.65	-1580.54
4	GUIDE	462828224	9.15	3989	0.075	-0.008	0.083	0.133	278.916586	47.249122	72.95	-1323.19
5	GUIDE	462832056	7.00	3991	-0.108	-0.140	0.058	0.091	278.478588	47.870192	1398.05	768.86
6	GUIDE	462705360	8.42	3990	-0.045	-0.147	0.066	0.107	277.902318	48.107341	1391.77	2399.33
7	GUIDE	462819696	8.93	3985	-0.046	0.228	0.088	0.138	279.330355	47.101449	169.27	-2461.21

## 2.4 Star Slots

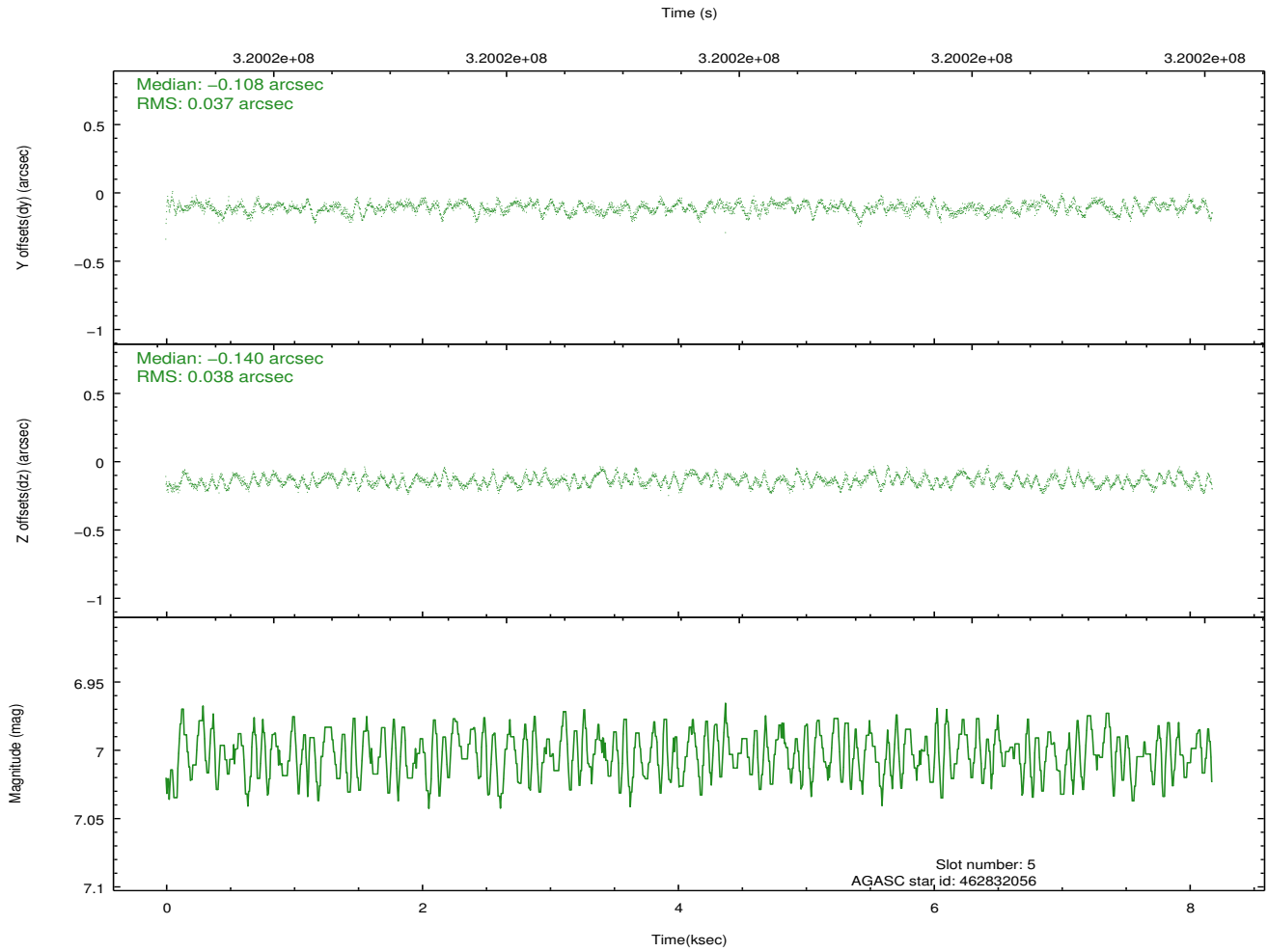
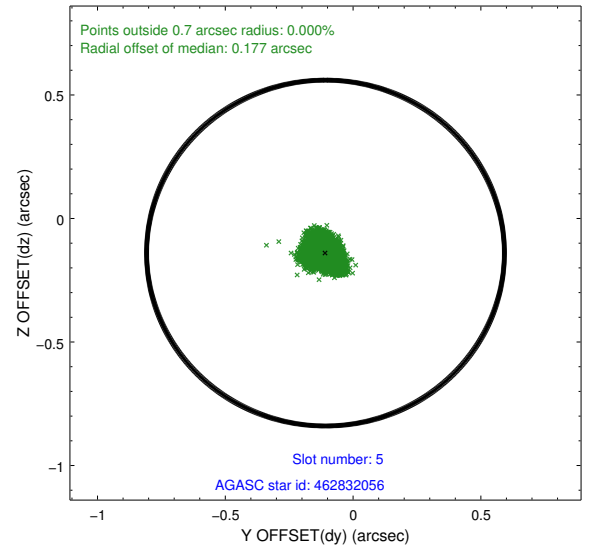
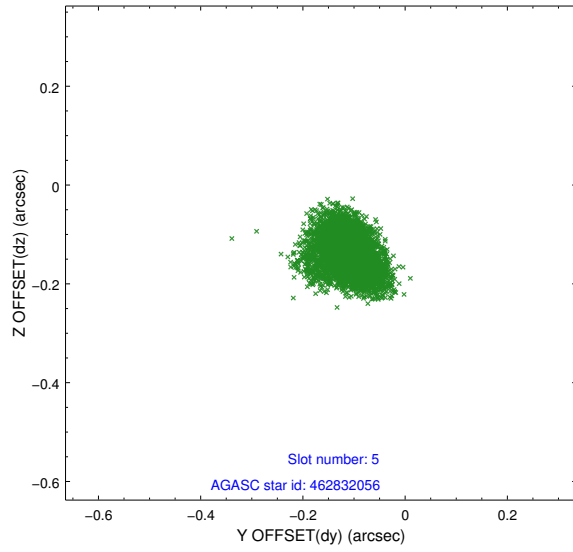
### 2.4.1 Slot 3



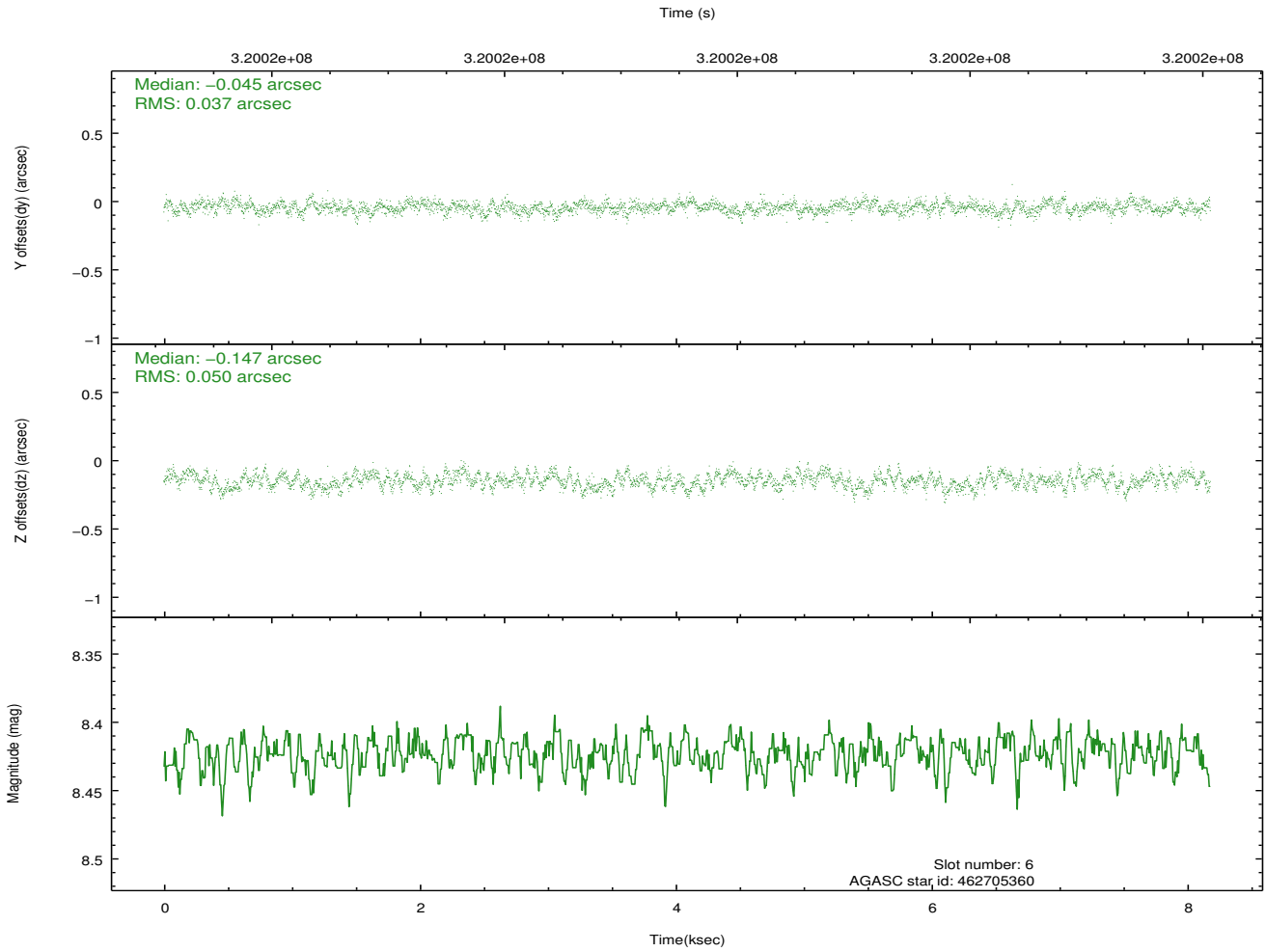
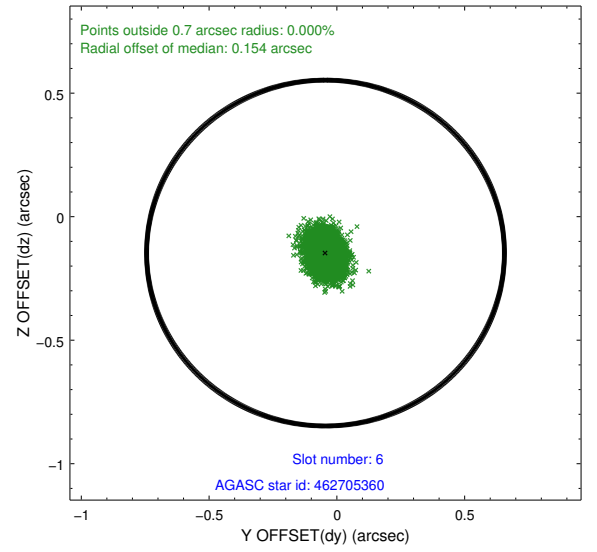
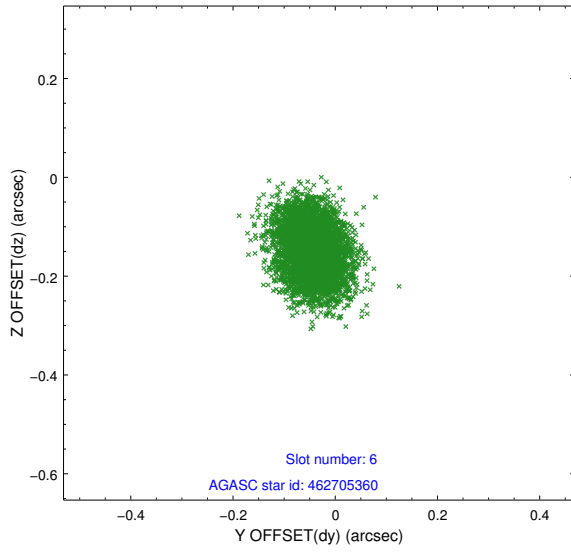
## 2.4.2 Slot 4



### 2.4.3 Slot 5

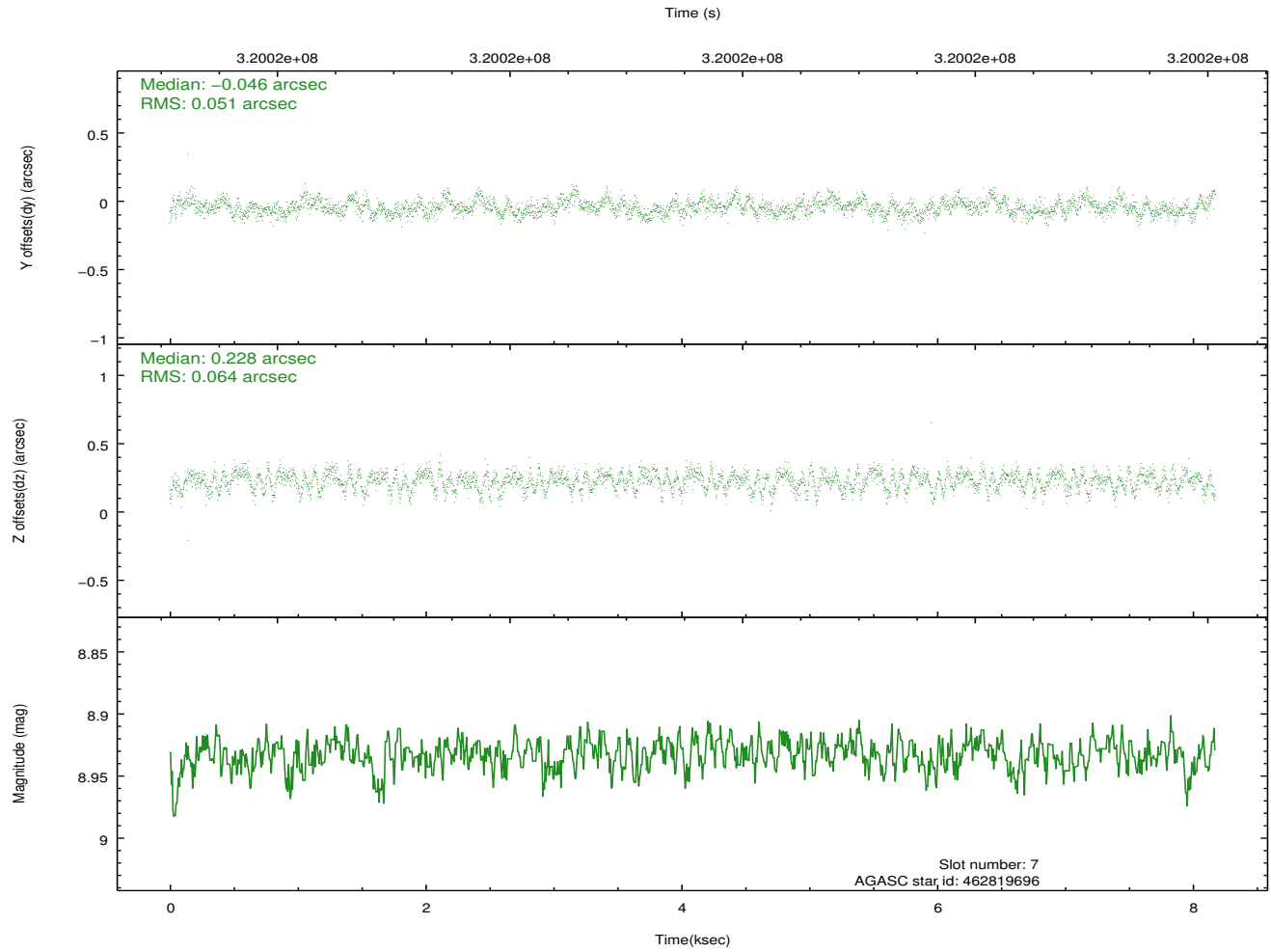
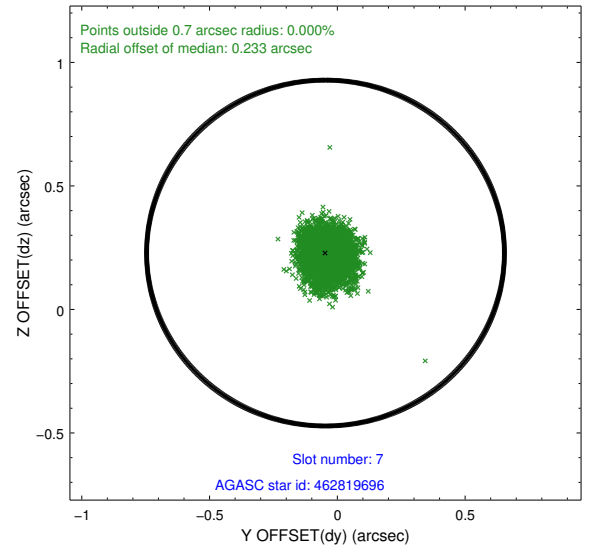
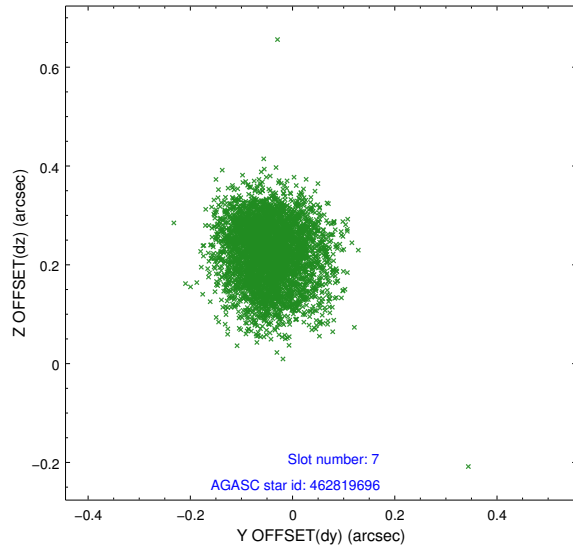


## 2.4.4 Slot 6



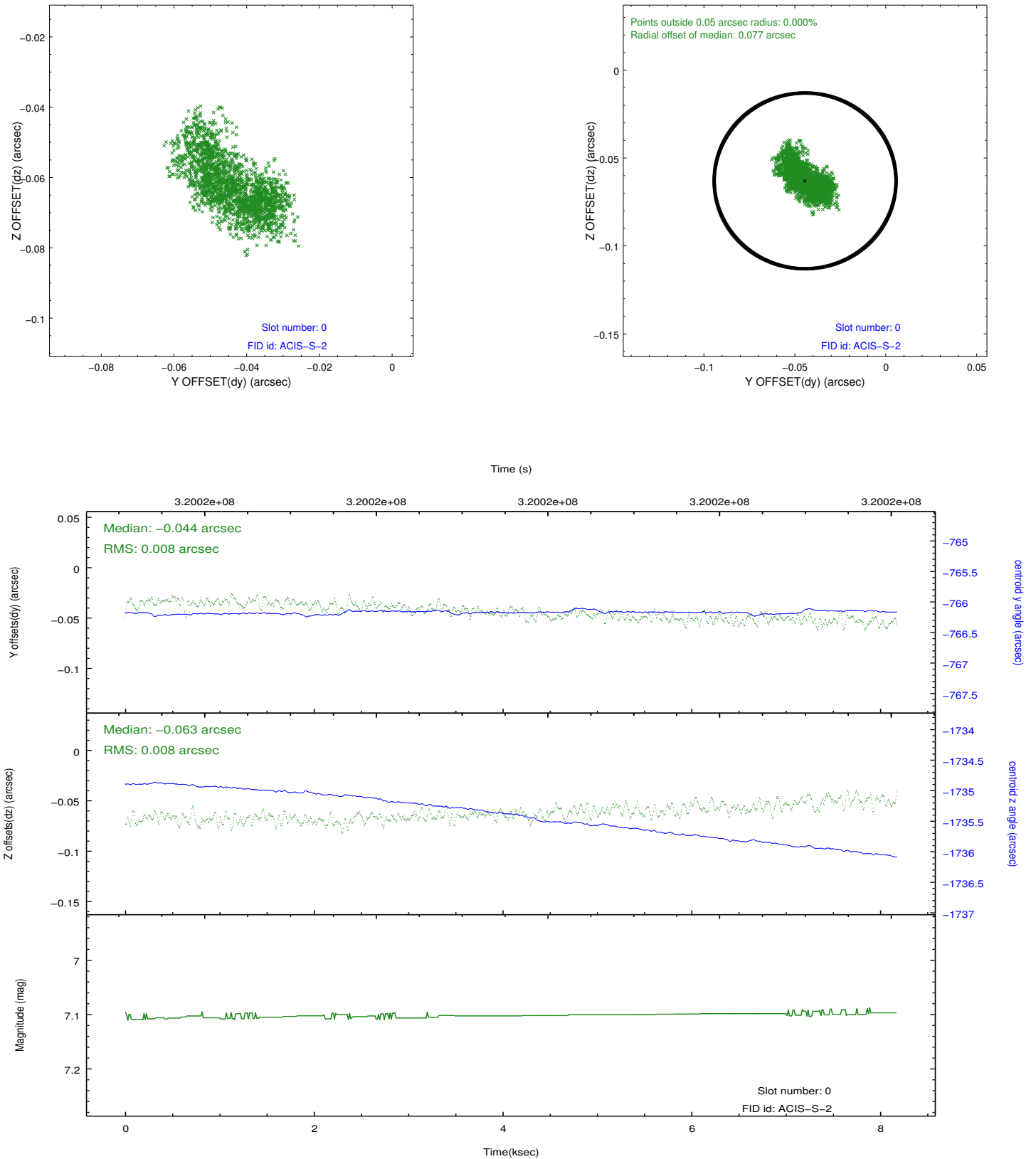


## 2.4.5 Slot 7

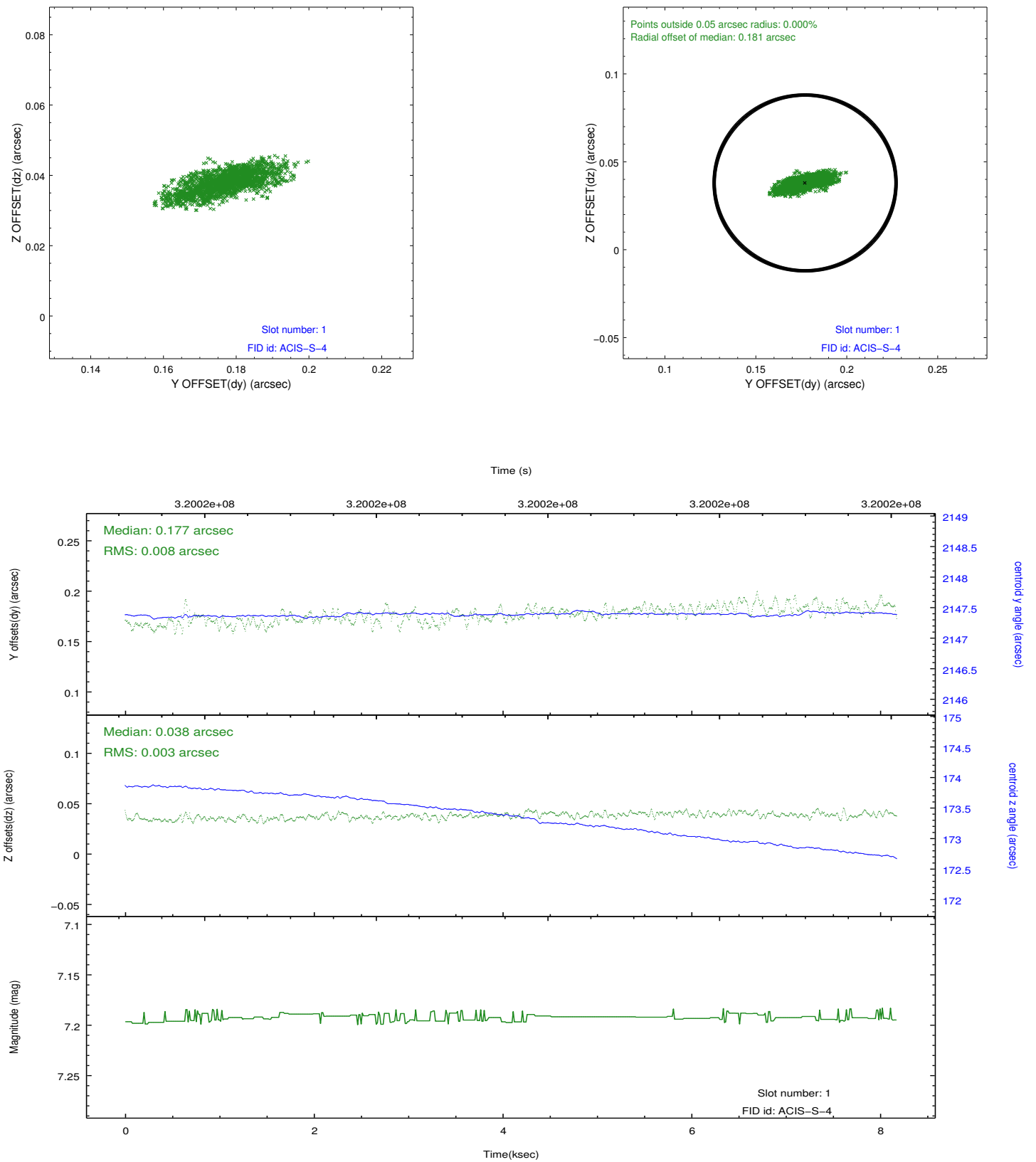


## 2.5 FID Slots

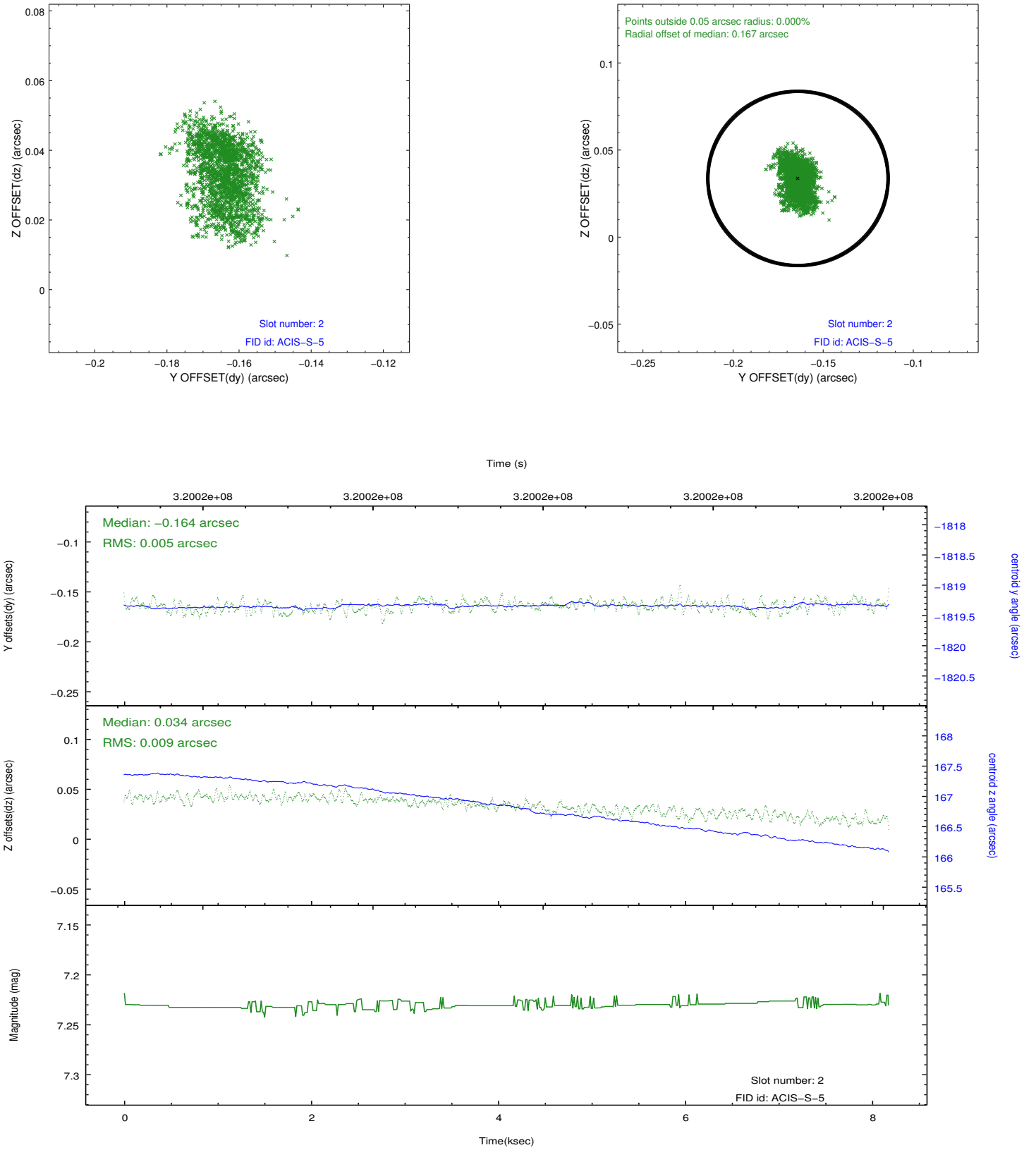
### 2.5.1 Slot 0



## 2.5.2 Slot 1



### 2.5.3 Slot 2



## A Summary

### A.1 Status

V&V Scientist	Jen Lauer
V&V Date (YYYY-MM-DD)	2012.05.13
V&V Edition	1
V&V Disposition and Status	OK
V&V Charge Time	8.17160006

### A.2 Comments