

V&V Reference Report

L2 ASCDS Version : 8.4.4

Observation 9311 - L2 Version 2
Chandra X-Ray Center

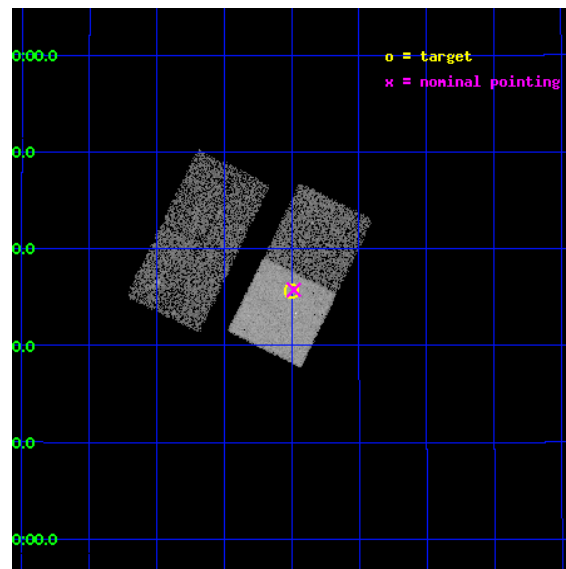
L2 Processing Date : May 11 2012

Contents

| | | |
|----------|-------------------------------|-----------|
| 1 | Front | 2 |
| 2 | OBI | 3 |
| 2.1 | OBI | 3 |
| 2.1.1 | Images | 3 |
| 2.1.2 | Bias | 3 |
| 2.1.3 | Parameters | 4 |
| 2.1.4 | Events | 4 |
| 2.2 | Compared Parameters | 5 |
| 2.3 | Aspect | 6 |
| 2.4 | Star Slots | 9 |
| 2.4.1 | Slot 3 | 9 |
| 2.4.2 | Slot 4 | 10 |
| 2.4.3 | Slot 5 | 11 |
| 2.4.4 | Slot 6 | 12 |
| 2.4.5 | Slot 7 | 13 |
| 2.5 | FID Slots | 14 |
| 2.5.1 | Slot 0 | 14 |
| 2.5.2 | Slot 1 | 15 |
| 2.5.3 | Slot 2 | 16 |
| A | Summary | 17 |
| A.1 | Status | 17 |
| A.2 | Comments | 17 |

1 Front

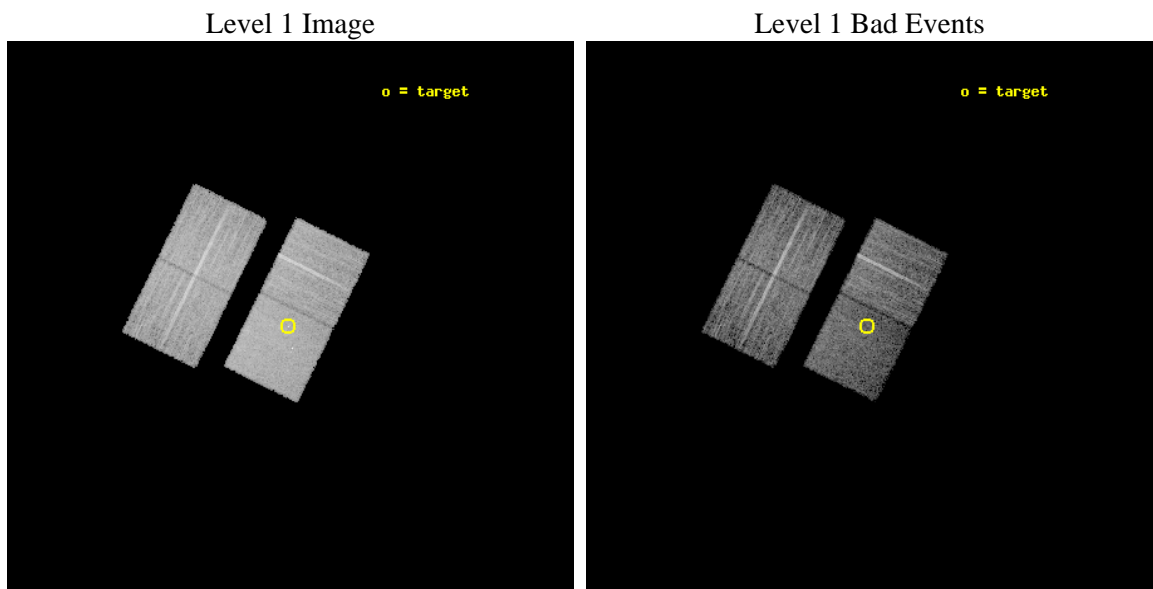
| | | |
|----------|---|---|
| seq_num | 701751 | Sequence number |
| obs_id | 9311 | Observation id |
| title | Towards a Complete Sample: 3CR Extragalactic Radio Sources with $z < 0.3$ | Proposal title |
| observer | Dr. Daniel Harris | Principal investigator |
| object | 3C300 | Source name |
| dtcycle | 0 | |
| cycle | P | events from which exps? Prim/Second/Both |
| ra_targ | 215.75 | Observer's specified target RA [deg] |
| dec_targ | 19.593611 | Observer's specified target Dec [deg] |
| ra_nom | 215.74567629785 | Nominal RA [deg] |
| dec_nom | 19.596153775798 | Nominal Dec [deg] |
| roll_nom | 116.26295729823 | Nominal Roll [deg] |
| revision | 2 | Processing version of data |
| ontime | 8044.5000618696 | Sum of GTIs [s] |
| livetime | 7939.3927462865 | Livetime [s] |
| ontime2 | 8044.5000618696 | Sum of GTIs [s] |
| ontime3 | 8044.5000618696 | Sum of GTIs [s] |
| ontime6 | 8044.5000618696 | Sum of GTIs [s] |
| ontime7 | 8044.5000618696 | Sum of GTIs [s] |
| l2events | 49231 | Number of level 2 events |



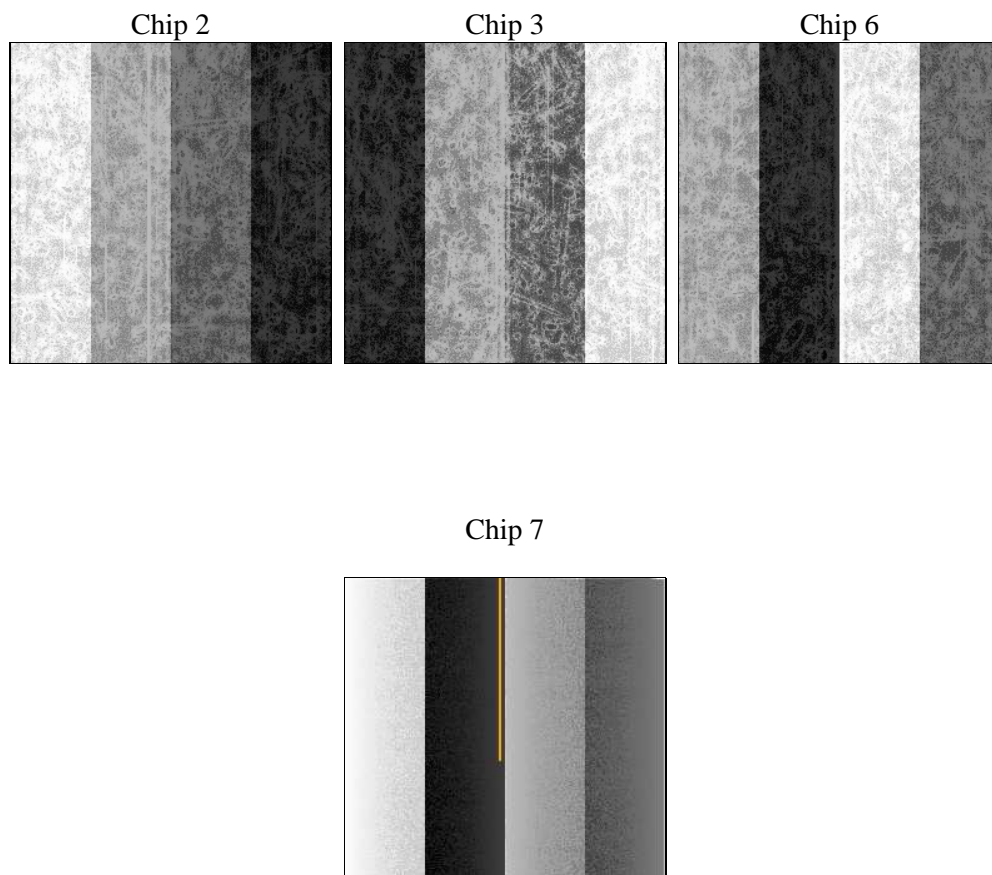
2 OBI

2.1 OBI

2.1.1 Images



2.1.2 Bias



2.1.3 Parameters

| | | | | | |
|----------|---------------------|--------------------------------|----------------|-----------------|---|
| obi_num | 0 | Obi number | sched_exp_time | 8000.000000 | [s] Scheduled observation exposure time |
| ascdsver | 8.4.4 | Processing system revision | ontime | 8044.5000618696 | Sum of GTIs [s] |
| caldsver | 4.4.9 | | ontime2 | 8044.5000618696 | Sum of GTIs [s] |
| date | 2012-05-12T00:16:36 | Date and time of file creation | ontime3 | 8044.5000618696 | Sum of GTIs [s] |
| revision | 2 | Processing version of data | ontime6 | 8044.5000618696 | Sum of GTIs [s] |
| | | | ontime7 | 8044.5000618696 | Sum of GTIs [s] |
| | | | l1events | 269633 | Number of level 1 events |

2.1.4 Events

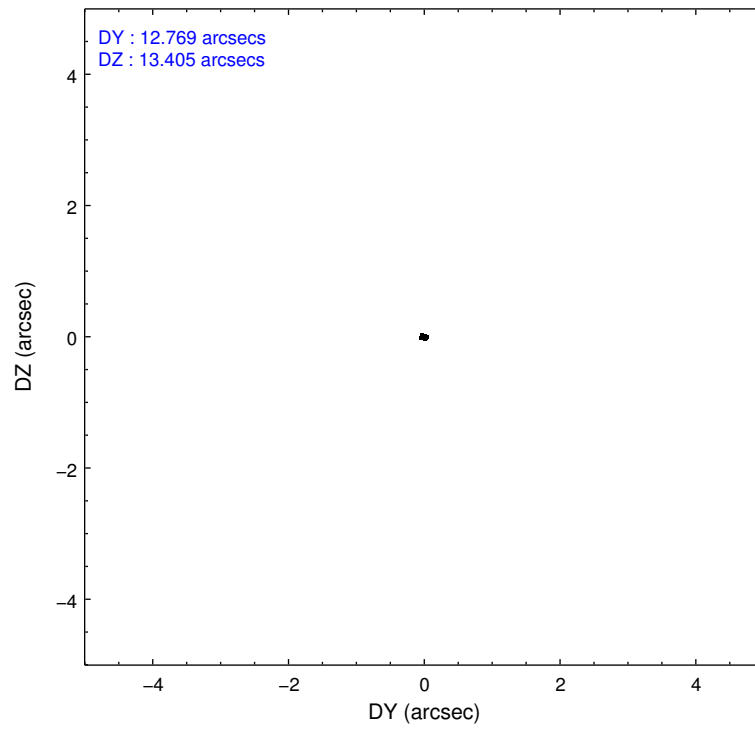
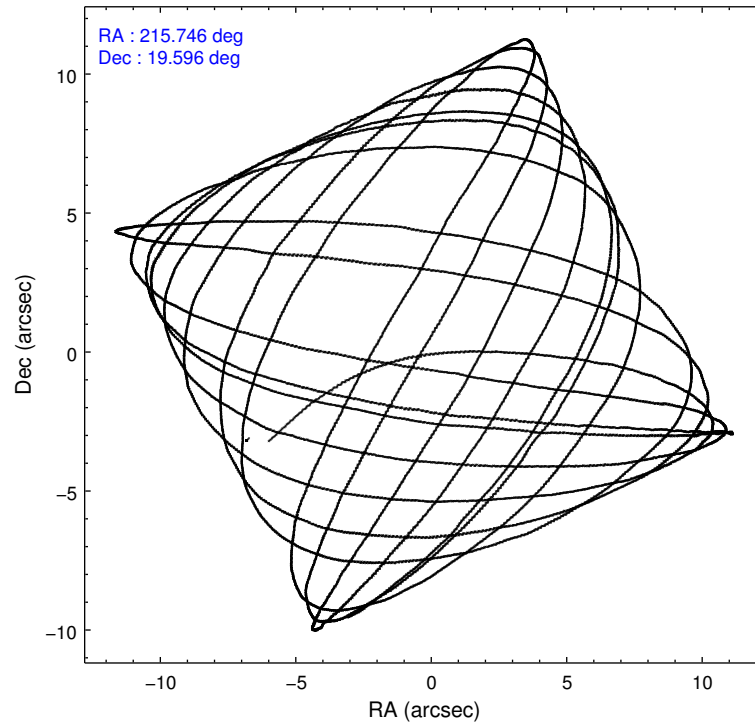
| | ccd 2 | ccd 3 | ccd 6 | ccd 7 |
|-----------------|-------|-------|-------|-------|
| level 1 events | 69189 | 63020 | 63907 | 73517 |
| rejected events | 62786 | 56807 | 57063 | 40005 |
| rejected % | 90% | 90% | 89% | 54% |

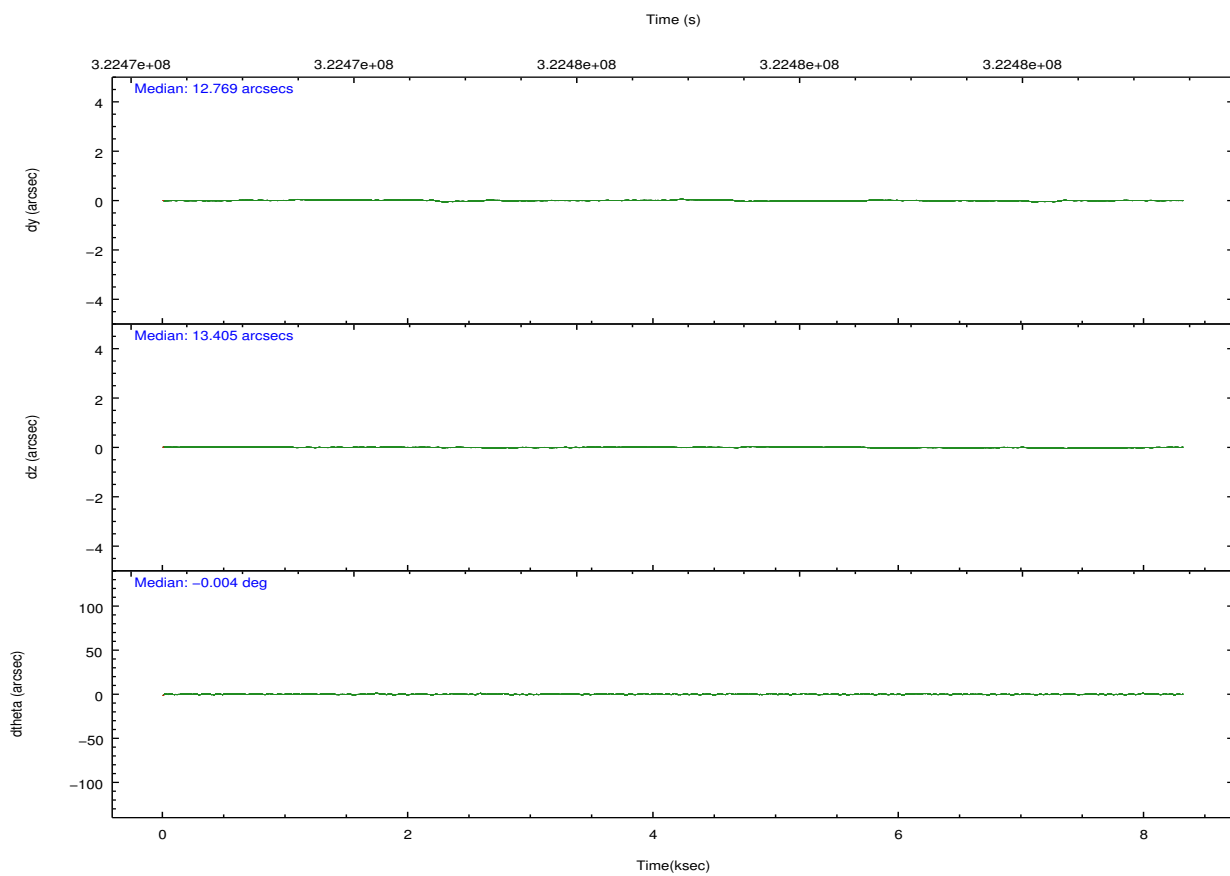
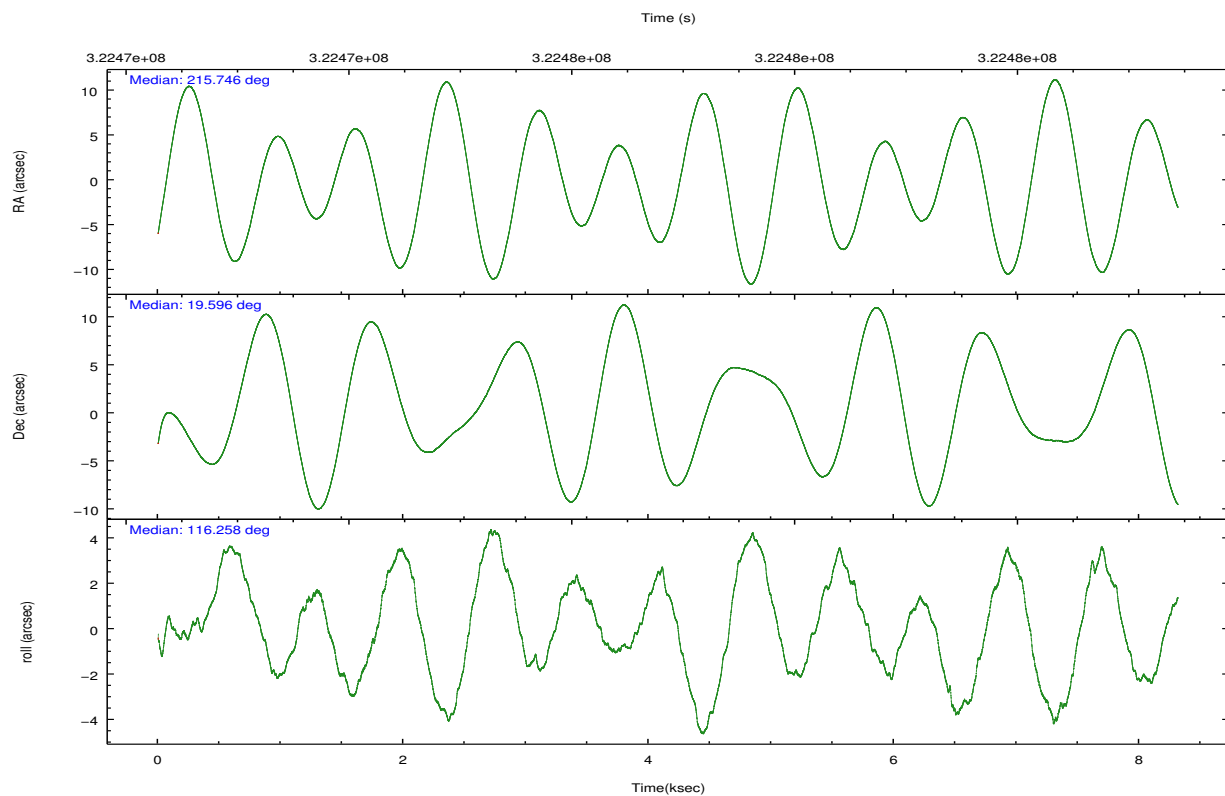
| | ccd 2 | ccd 3 | ccd 6 | ccd 7 |
|----------------|-------|-------|-------|-------|
| grade 0 events | 2291 | 2252 | 2443 | 3250 |
| | 3% | 3% | 3% | 4% |
| grade 1 events | 40 | 38 | 28 | 87 |
| | 0% | 0% | 0% | 0% |
| grade 2 events | 1474 | 1303 | 1462 | 6851 |
| | 2% | 2% | 2% | 9% |
| grade 3 events | 692 | 676 | 737 | 2973 |
| | 1% | 1% | 1% | 4% |
| grade 4 events | 761 | 756 | 712 | 2879 |
| | 1% | 1% | 1% | 3% |
| grade 5 events | 2145 | 2599 | 2581 | 7438 |
| | 3% | 4% | 4% | 10% |
| grade 6 events | 1186 | 1230 | 1491 | 17571 |
| | 1% | 1% | 2% | 23% |
| grade 7 events | 60600 | 54166 | 54453 | 32468 |
| | 87% | 85% | 85% | 44% |

2.2 Compared Parameters

| Parameter | Planned | Actual | Parameter | Planned | Actual |
|-----------------------------------|---------------------|----------------------|---------------------------------------|-----------|---------|
| Instrument | ACIS | ACIS | Obspar format version number | 7 | 7 |
| Detector | ACIS-2367 | ACIS-2367 | Obspar file type | PREDICTED | ACTUAL |
| Grating | NONE | NONE | Obspar update status | NONE | UPDATED |
| Data mode | VFAINT | VFAINT | Number of optional ACIS chips dropped | 0 | 0 |
| Observation mode | POINTING | POINTING | On-chip summing requested | N | N |
| [deg] Pointing RA | 215.769996 | 215.745676297855 | Subarray requested | NONE | NONE |
| [deg] Pointing Dec | 19.581311 | 19.59615377579823 | Alternating exposures requested | N | N |
| [deg] Pointing Roll | 116.098176 | 116.2629572982286 | [s] Primary exposure time | 0.000000 | 3.1 |
| [mm] SIM focus pos | -0.684267 | -0.6828225247311905 | | | |
| [mm] SIM defocus | 0 | 0.001444936568705701 | | | |
| [mm] SIM translation stage pos | -190.132523 | -190.1425803651734 | | | |
| [mm] SIM translation stage offset | 0 | 0.01005778216563158 | | | |
| [s] Observation start time (MET) | 322473026.184000 | 322472093.50213 | | | |
| Observation start date | 2008-03-21T07:49:21 | 2008-03-21T07:34:53 | | | |
| [s] Observation end time (MET) | 322481026.184000 | 322481904.29011 | | | |
| Observation end date | 2008-03-21T10:02:41 | 2008-03-21T10:18:24 | | | |
| Read mode | TIMED | TIMED | | | |

2.3 Aspect



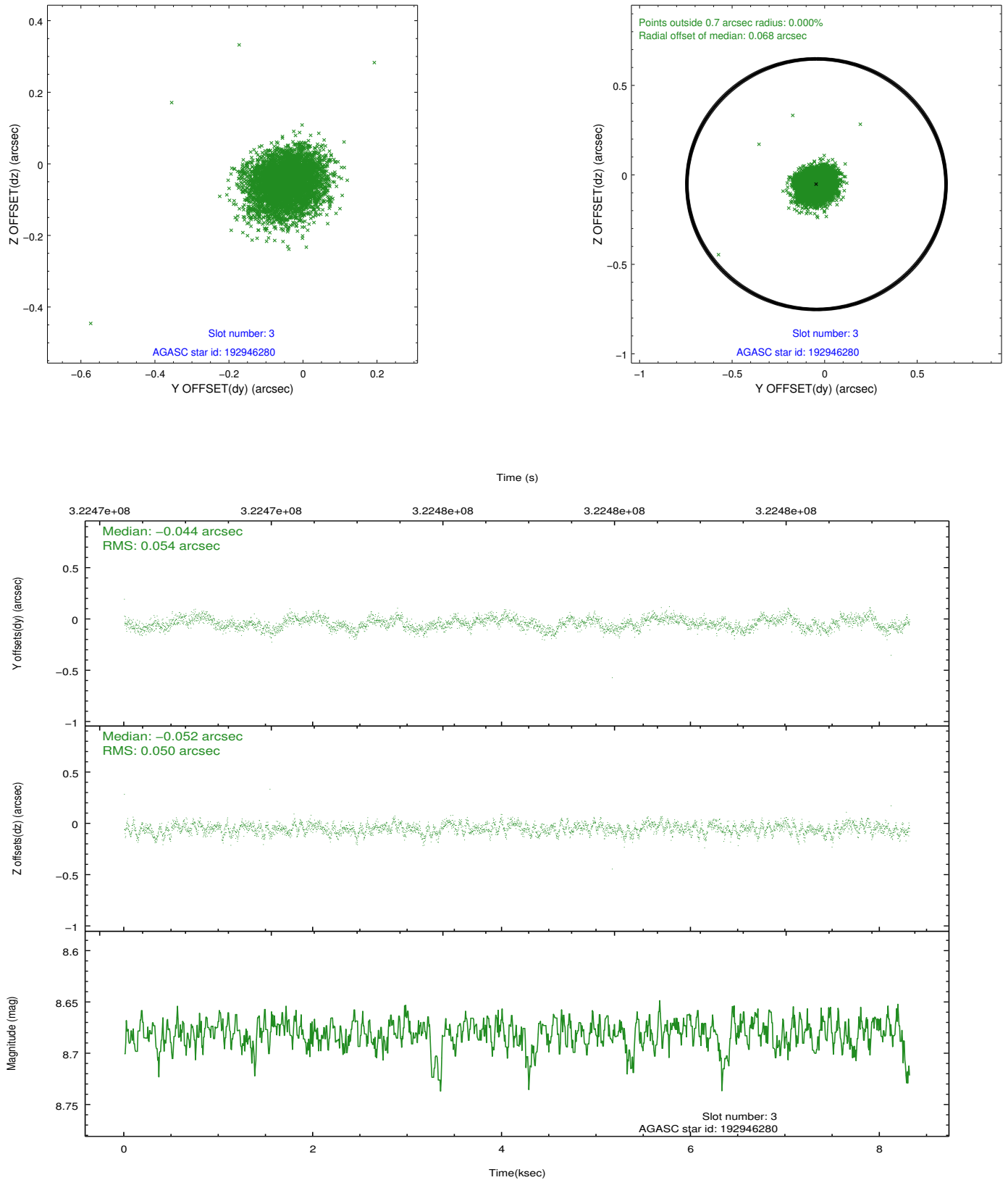


Slot Statistics

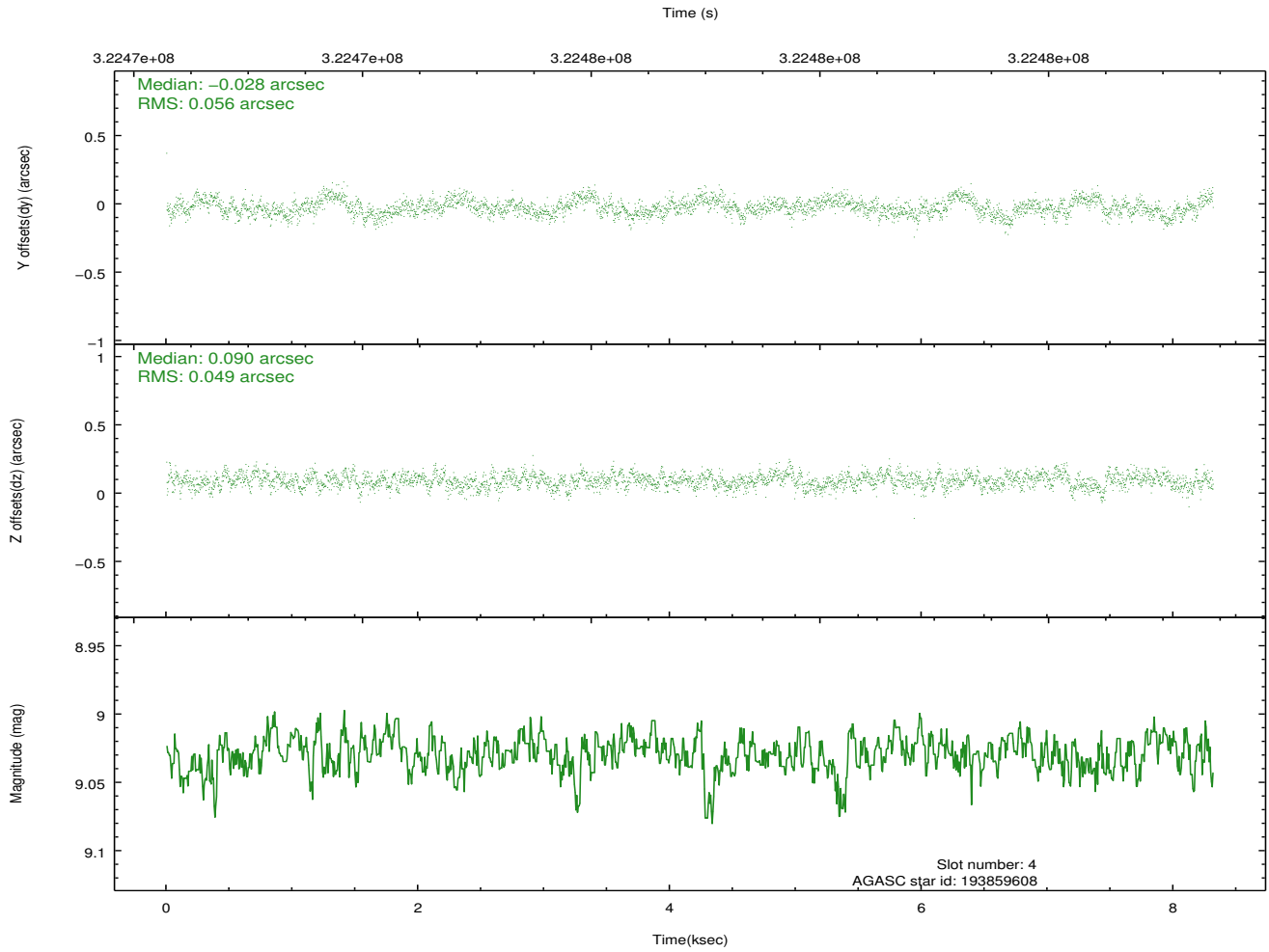
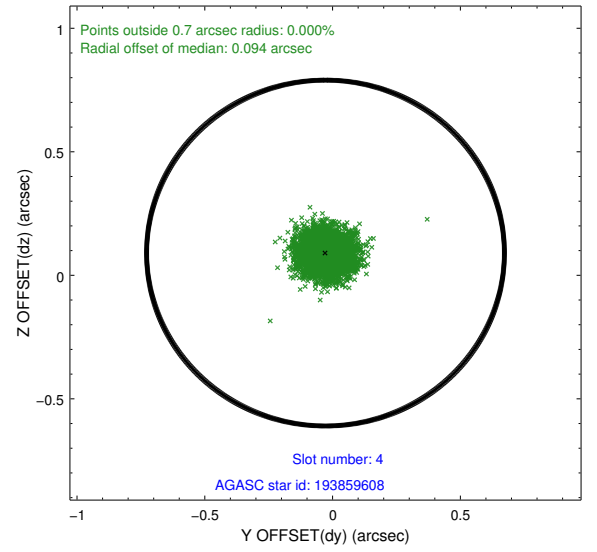
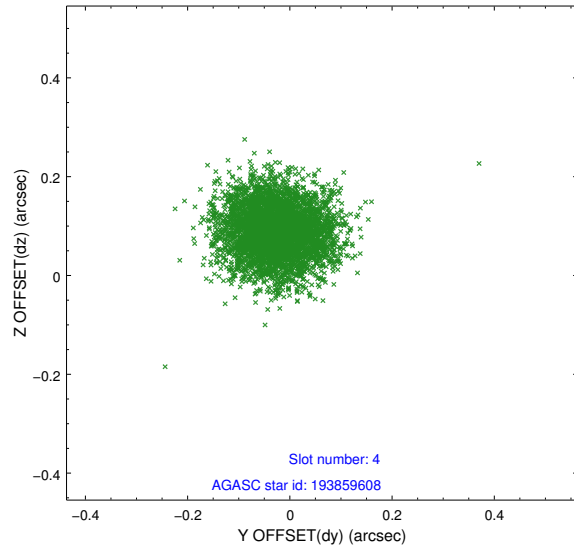
| slot | status | id | mag | n_pts | med_dy | med_dz | dr1 | dr2 | ra | dec | mean_y | mean_z |
|------|--------|-----------|------|-------|--------|--------|-------|-------|------------|-----------|----------|----------|
| 0 | FID | ACIS-S-2 | 7.10 | 2029 | -0.029 | -0.059 | 0.006 | 0.011 | 0.000000 | 0.000000 | -765.71 | -1734.75 |
| 1 | FID | ACIS-S-4 | 7.19 | 2029 | 0.143 | 0.030 | 0.006 | 0.010 | 0.000000 | 0.000000 | 2147.44 | 173.13 |
| 2 | FID | ACIS-S-5 | 7.24 | 2029 | -0.146 | 0.038 | 0.006 | 0.011 | 0.000000 | 0.000000 | -1817.81 | 167.57 |
| 3 | GUIDE | 192946280 | 8.68 | 4056 | -0.044 | -0.052 | 0.077 | 0.121 | 215.421411 | 19.362445 | -185.83 | 1410.48 |
| 4 | GUIDE | 193859608 | 9.03 | 4056 | -0.028 | 0.090 | 0.081 | 0.127 | 216.605438 | 19.301648 | -2146.26 | -2108.74 |
| 5 | GUIDE | 193862592 | 9.16 | 4052 | 0.050 | -0.010 | 0.117 | 0.184 | 216.589177 | 19.378449 | -1873.51 | -2180.17 |
| 6 | GUIDE | 193862752 | 8.33 | 4056 | 0.036 | -0.030 | 0.062 | 0.097 | 216.248617 | 19.510239 | -942.06 | -1347.21 |
| 7 | GUIDE | 193860744 | 8.06 | 4055 | -0.017 | -0.000 | 0.078 | 0.118 | 216.550217 | 19.209280 | -2363.69 | -1795.30 |

2.4 Star Slots

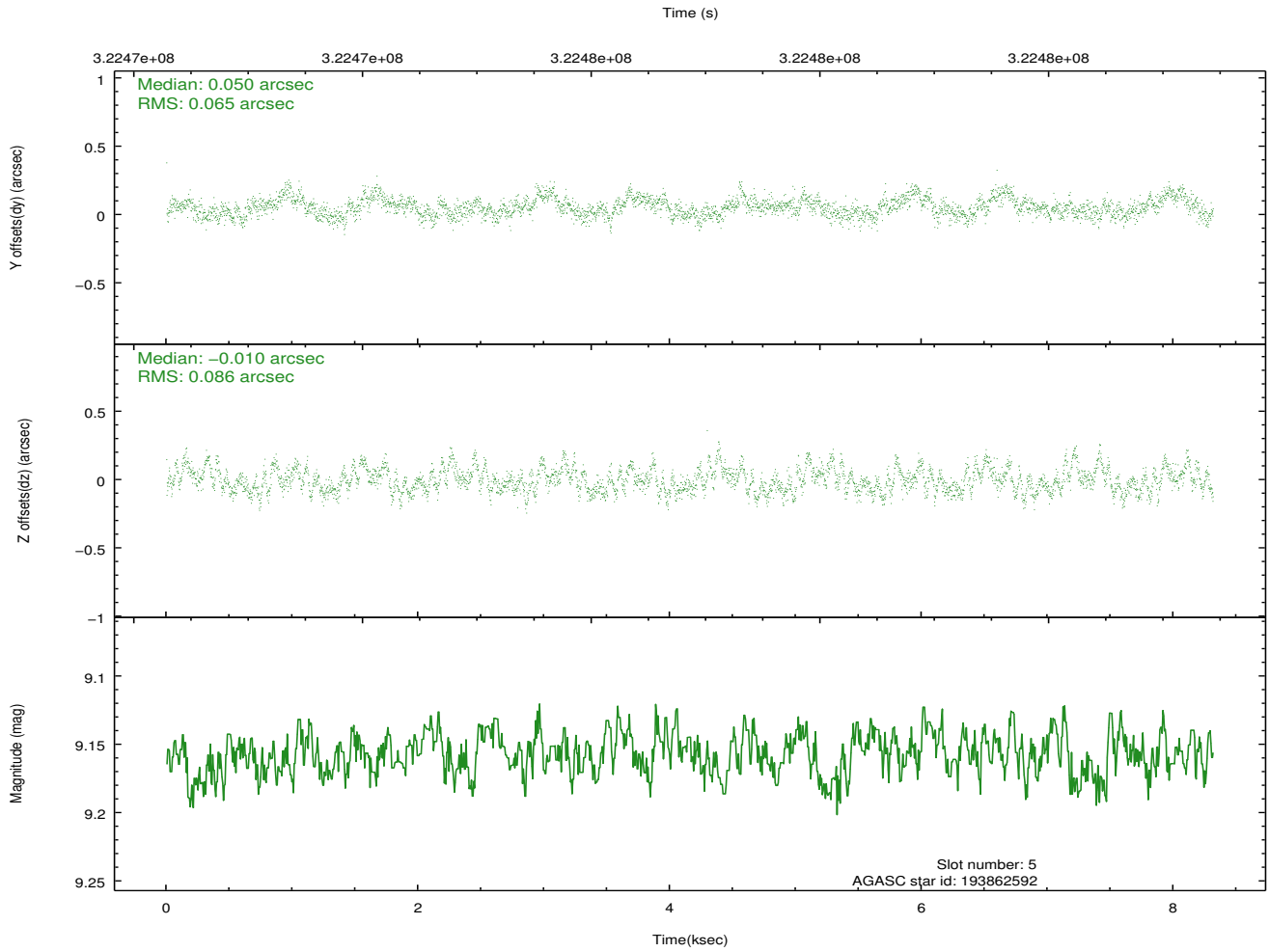
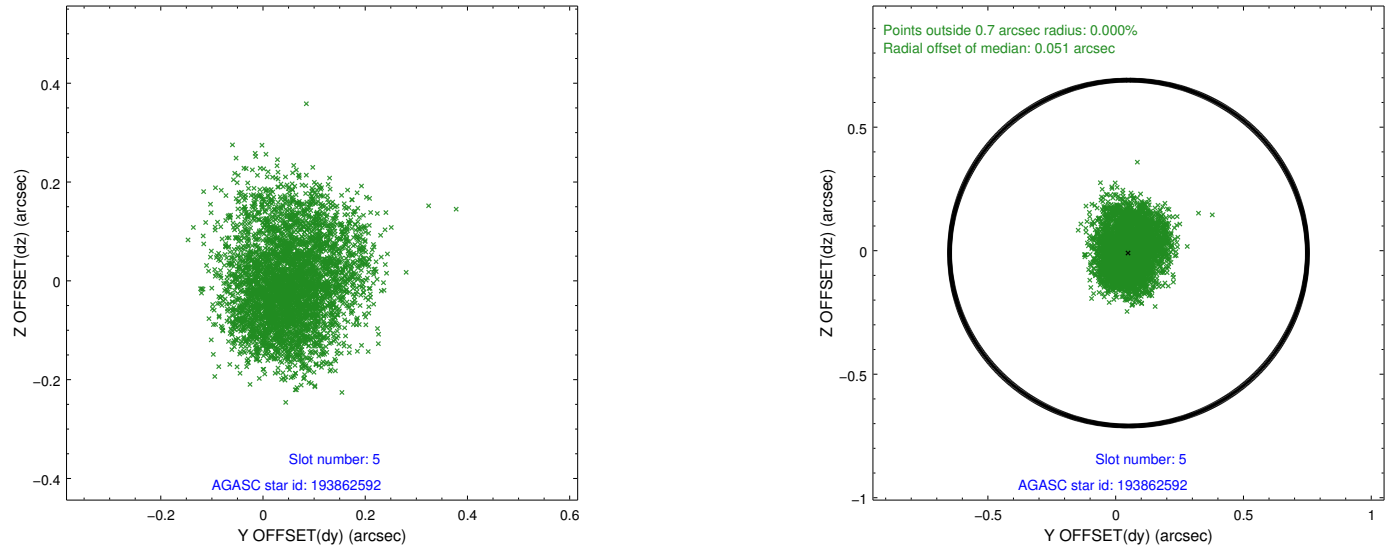
2.4.1 Slot 3



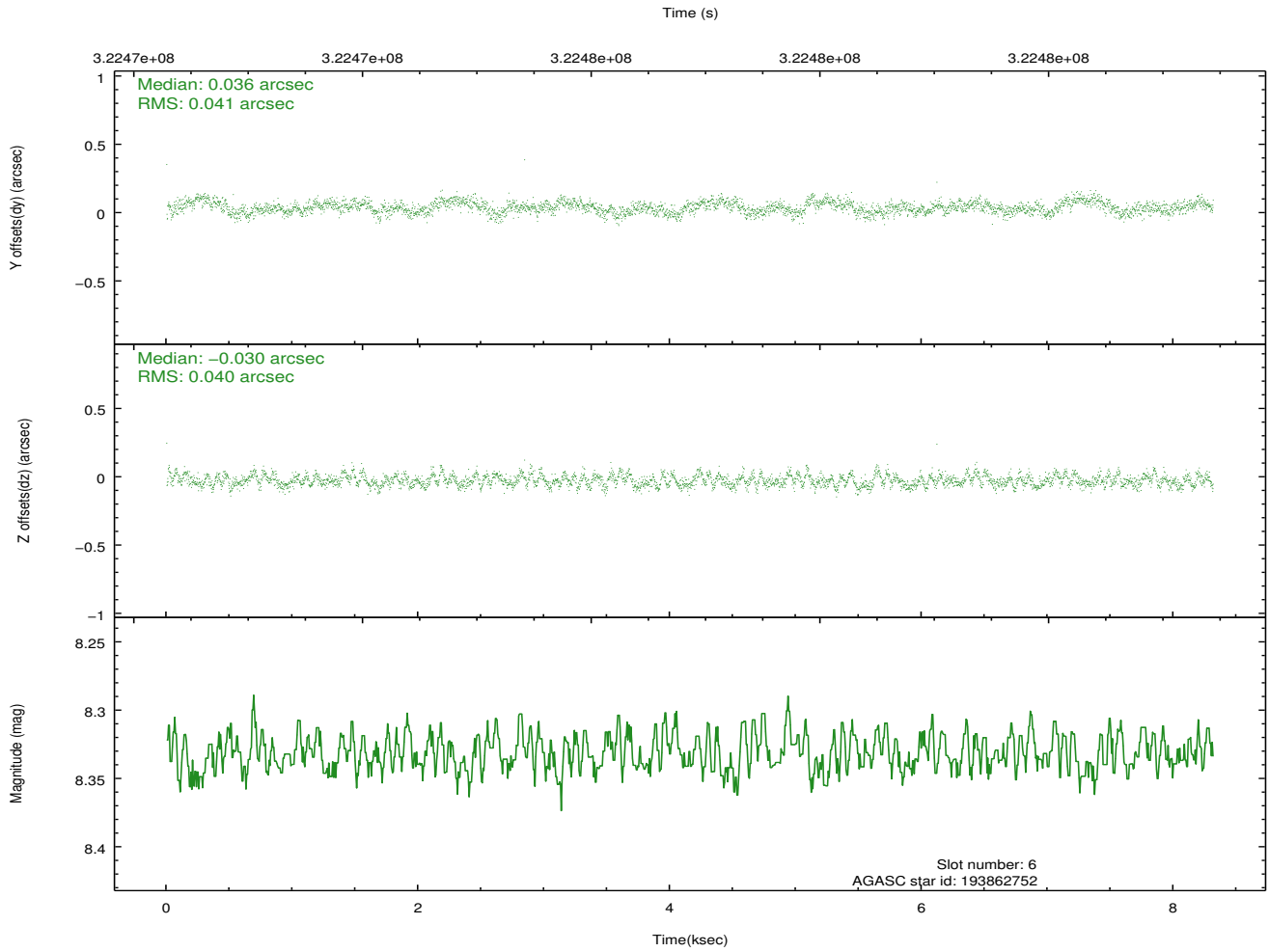
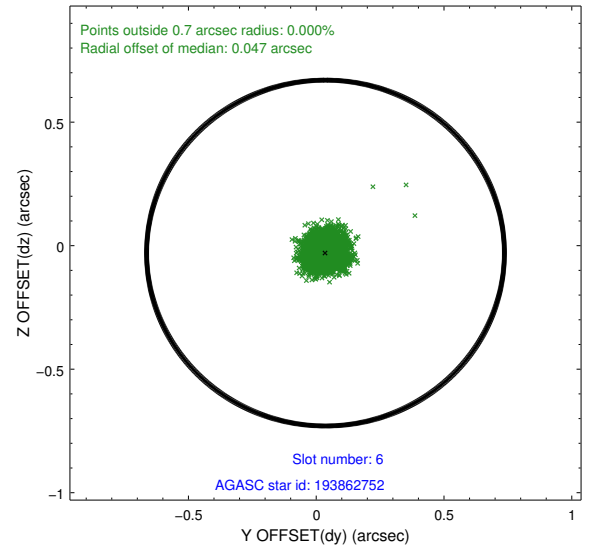
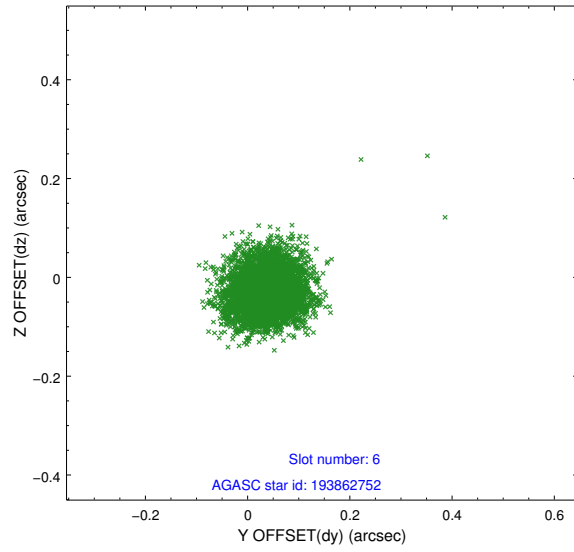
2.4.2 Slot 4



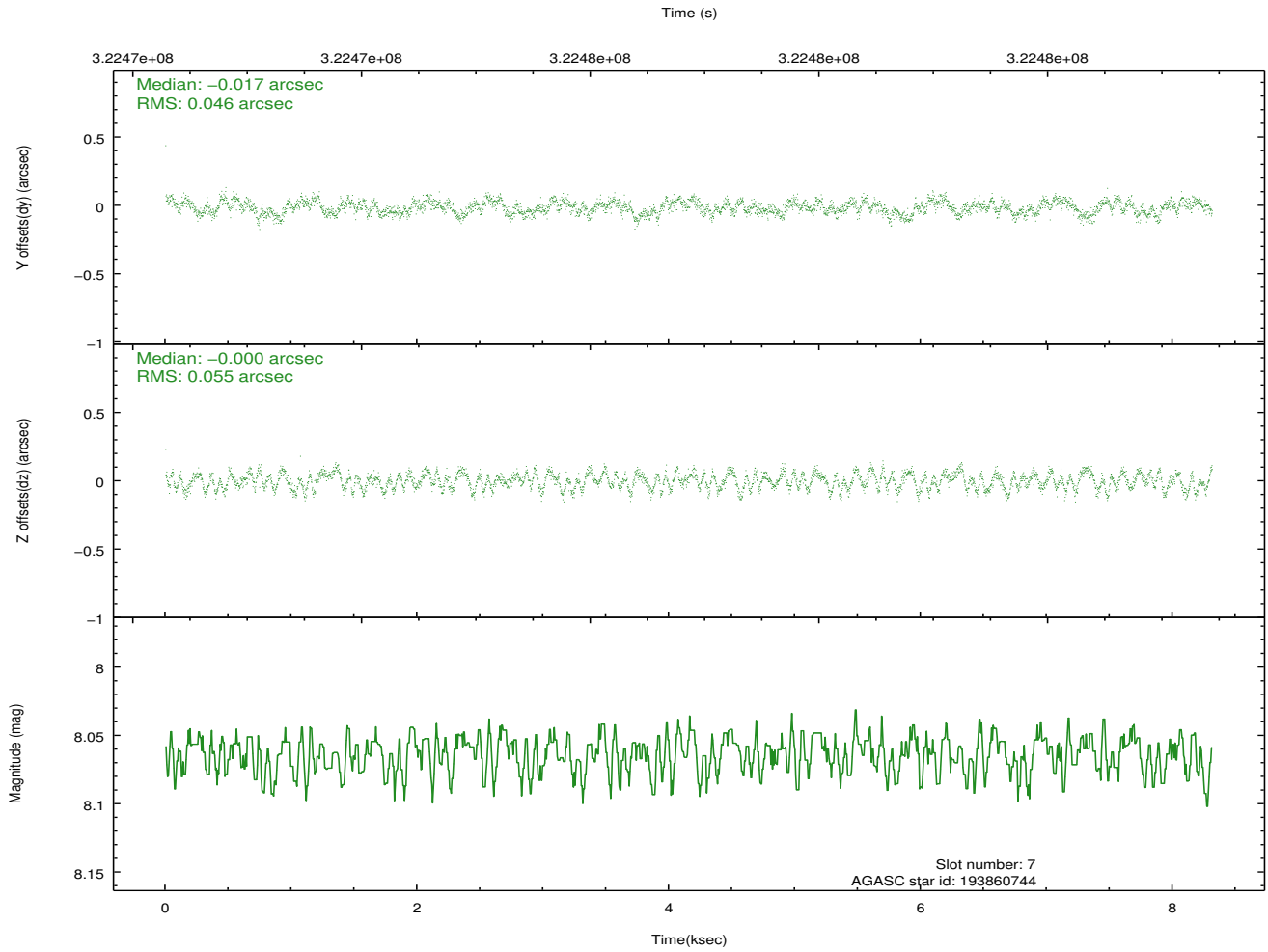
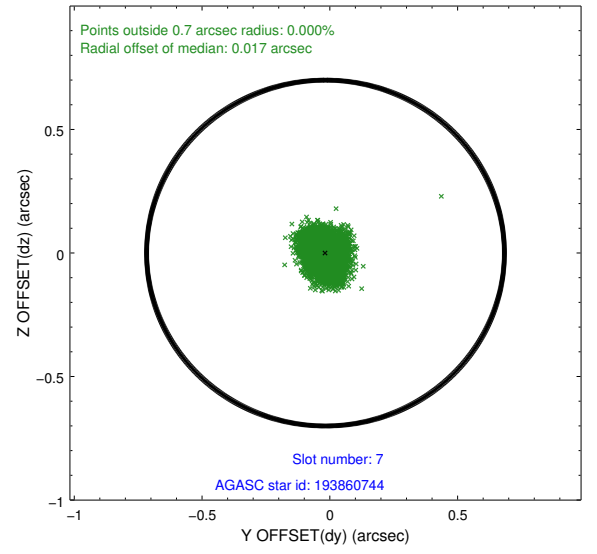
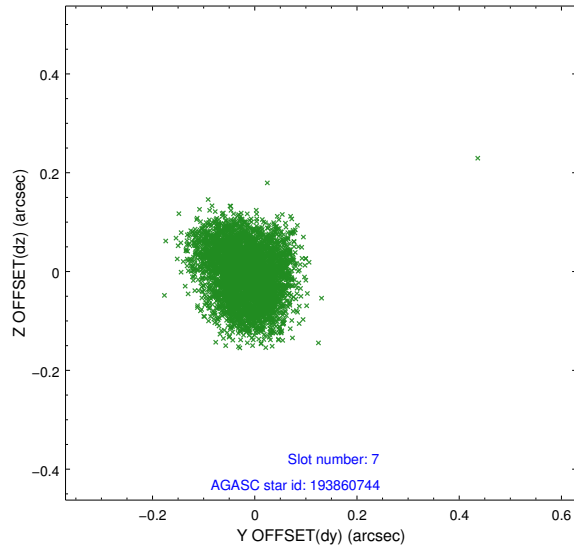
2.4.3 Slot 5



2.4.4 Slot 6

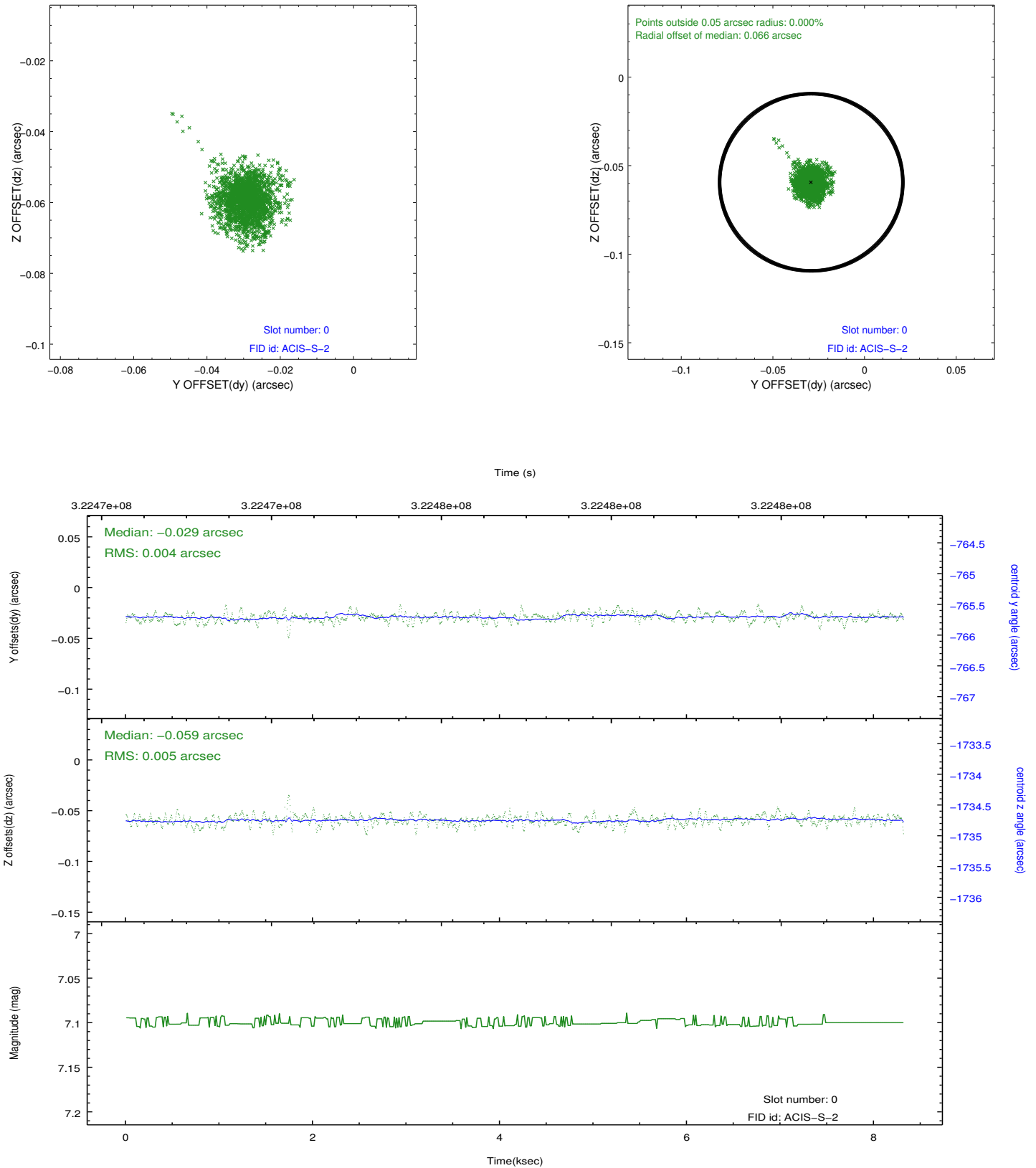


2.4.5 Slot 7

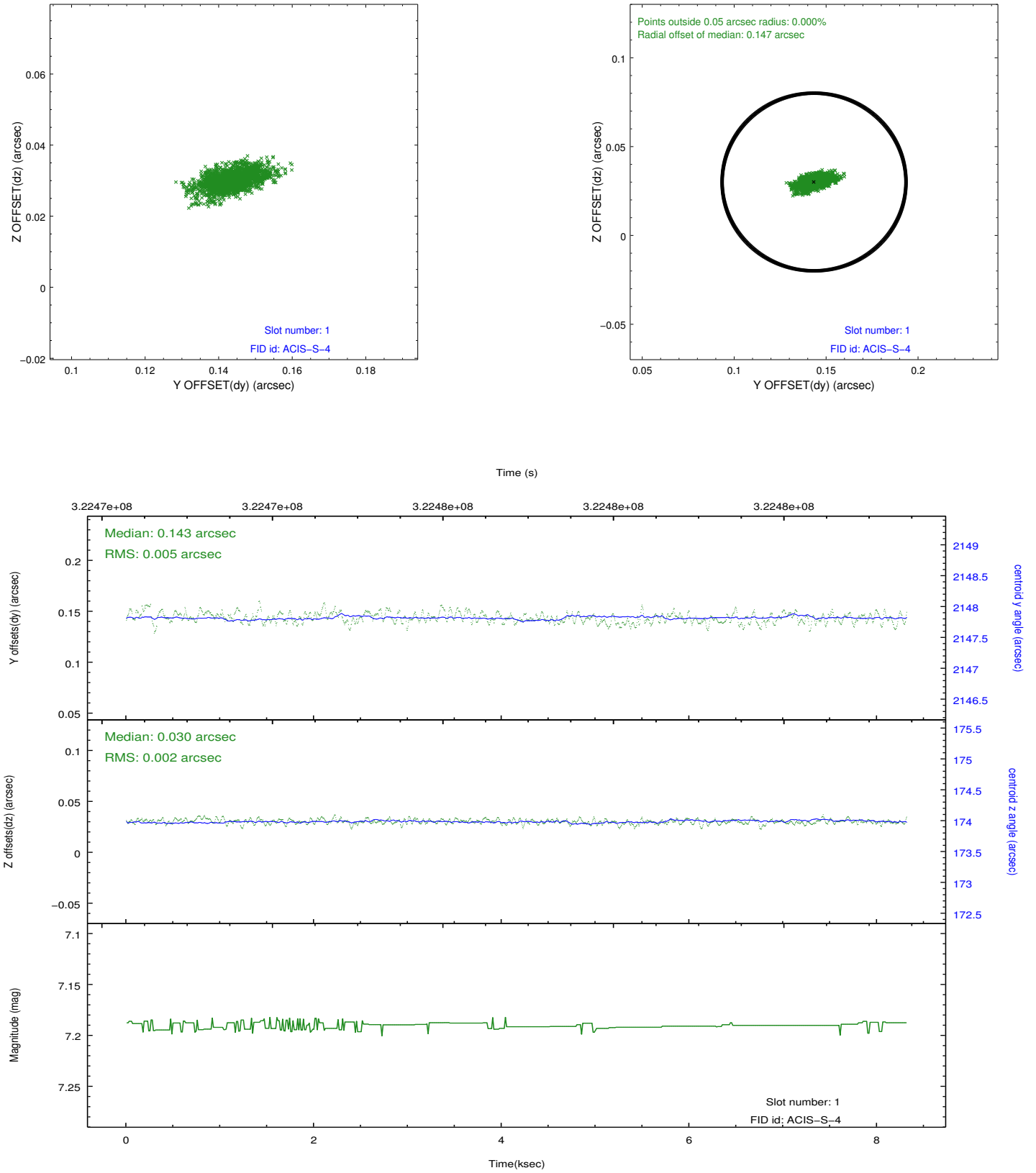


2.5 FID Slots

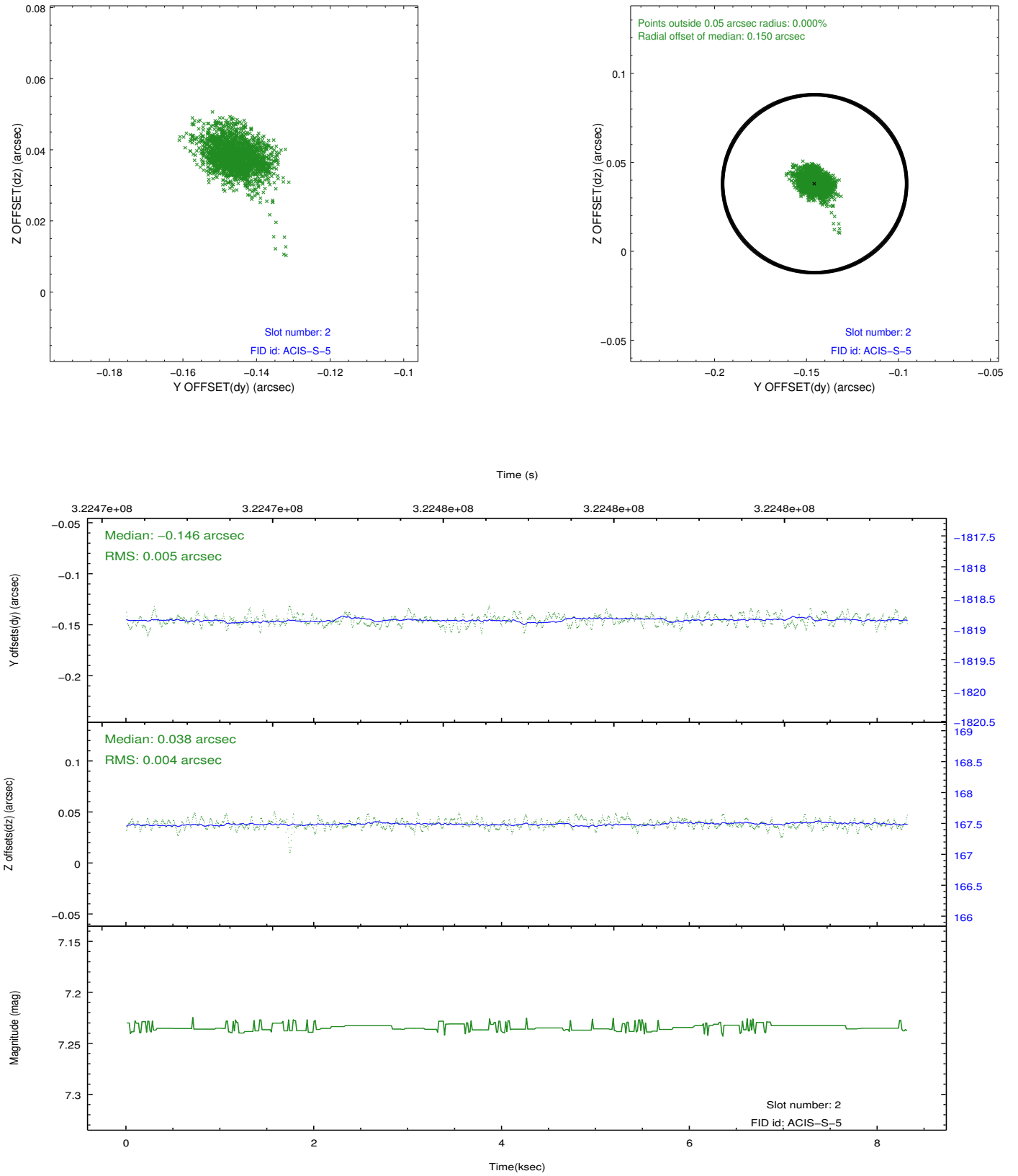
2.5.1 Slot 0



2.5.2 Slot 1



2.5.3 Slot 2



A Summary

A.1 Status

| | |
|----------------------------|------------|
| V&V Scientist | Jen Lauer |
| V&V Date (YYYY-MM-DD) | 2012.05.14 |
| V&V Edition | 1 |
| V&V Disposition and Status | OK |
| V&V Charge Time | 8.04450006 |

A.2 Comments