

V&V Reference Report

L2 ASCDS Version : 8.4.4

Observation 9305 - L2 Version 2
Chandra X-Ray Center

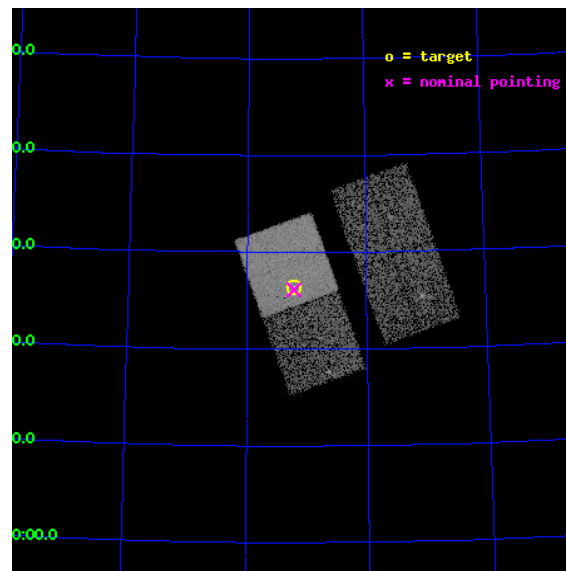
L2 Processing Date : May 11 2012

Contents

1	Front	2
2	OBI	3
2.1	OBI	3
2.1.1	Images	3
2.1.2	Bias	3
2.1.3	Parameters	4
2.1.4	Events	4
2.2	Compared Parameters	5
2.3	Aspect	6
2.4	Star Slots	9
2.4.1	Slot 3	9
2.4.2	Slot 4	10
2.4.3	Slot 5	11
2.4.4	Slot 6	12
2.4.5	Slot 7	13
2.5	FID Slots	14
2.5.1	Slot 0	14
2.5.2	Slot 1	15
2.5.3	Slot 2	16
A	Summary	17
A.1	Status	17
A.2	Comments	17

1 Front

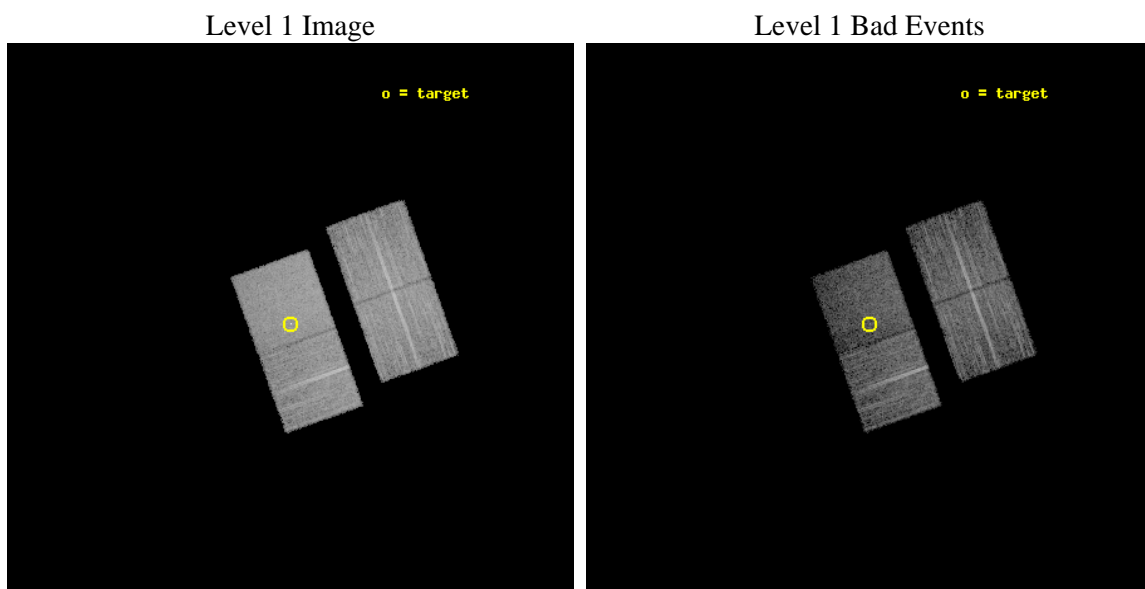
seq_num	701745	Sequence number
obs_id	9305	Observation id
title	Towards a Complete Sample: 3CR Extragalactic Radio Sources with $z < 0.3$	Proposal title
observer	Dr. Daniel Harris	Principal investigator
object	3C184.1	Source name
dtcycle	0	
cycle	P	events from which exps? Prim/Second/Both
ra_targ	115.755833	Observer's specified target RA [deg]
dec_targ	80.440444	Observer's specified target Dec [deg]
ra_nom	115.76191760319	Nominal RA [deg]
dec_nom	80.435654132712	Nominal Dec [deg]
roll_nom	250.30186288723	Nominal Roll [deg]
revision	2	Processing version of data
ontime	8128.2000625134	Sum of GTIs [s]
livetime	8021.9991448028	Livetime [s]
ontime2	8125.0590722561	Sum of GTIs [s]
ontime3	8128.2000625134	Sum of GTIs [s]
ontime6	8125.0590722561	Sum of GTIs [s]
ontime7	8128.2000625134	Sum of GTIs [s]
l2events	49479	Number of level 2 events



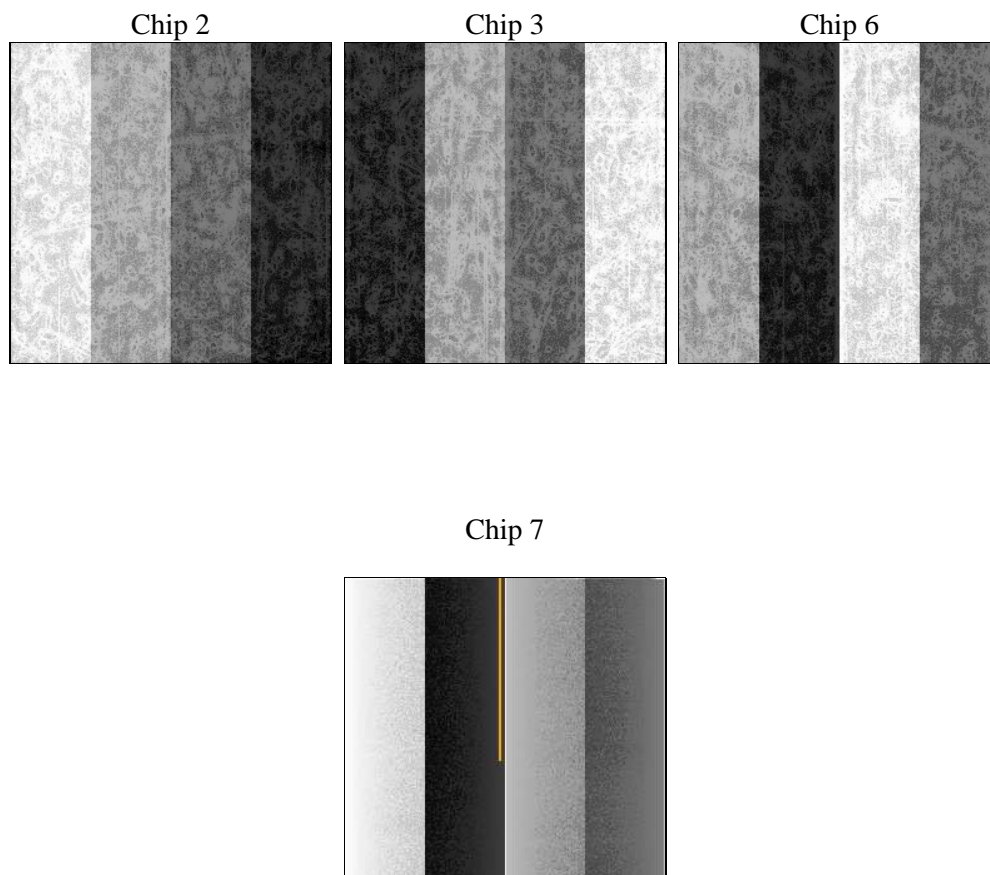
2 OBI

2.1 OBI

2.1.1 Images



2.1.2 Bias



2.1.3 Parameters

obi_num	0	Obi number	sched_exp_time	8000.000000	[s] Scheduled observation exposure time
ascdsver	8.4.4	Processing system revision	ontime	8128.2000625134	Sum of GTIs [s]
caldsver	4.4.9	 	ontime2	8125.0590722561	Sum of GTIs [s]
date	2012-05-12T00:52:36	Date and time of file creation	ontime3	8128.2000625134	Sum of GTIs [s]
revision	2	Processing version of data	ontime6	8125.0590722561	Sum of GTIs [s]
			ontime7	8128.2000625134	Sum of GTIs [s]
			l1events	302950	Number of level 1 events

2.1.4 Events

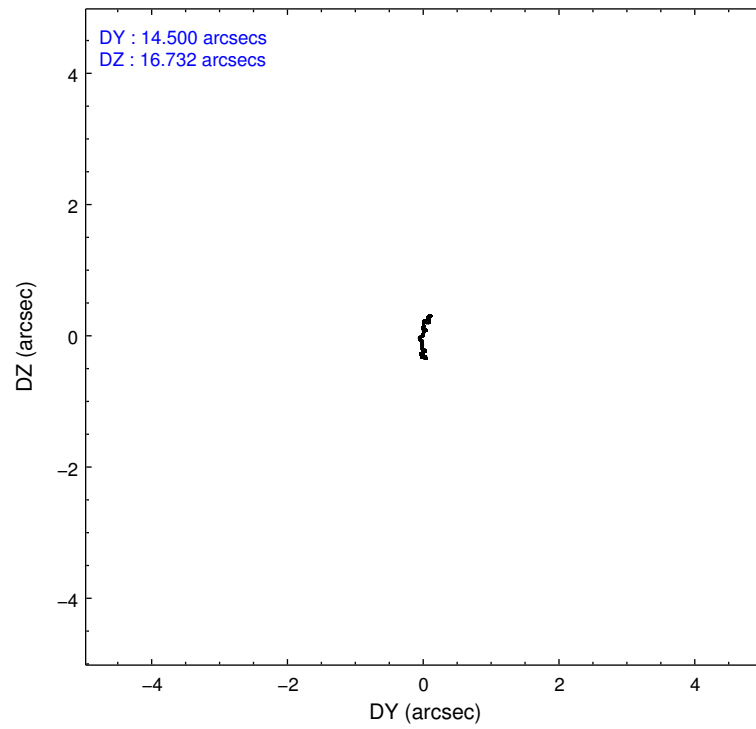
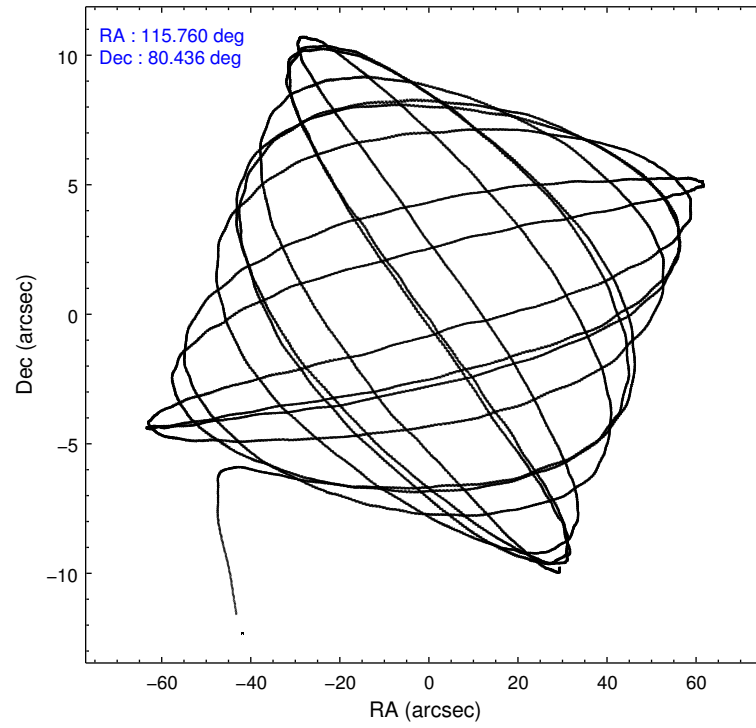
	ccd 2	ccd 3	ccd 6	ccd 7
level 1 events	76208	71005	72606	83131
rejected events	69706	64869	65902	49270
rejected %	91%	91%	90%	59%

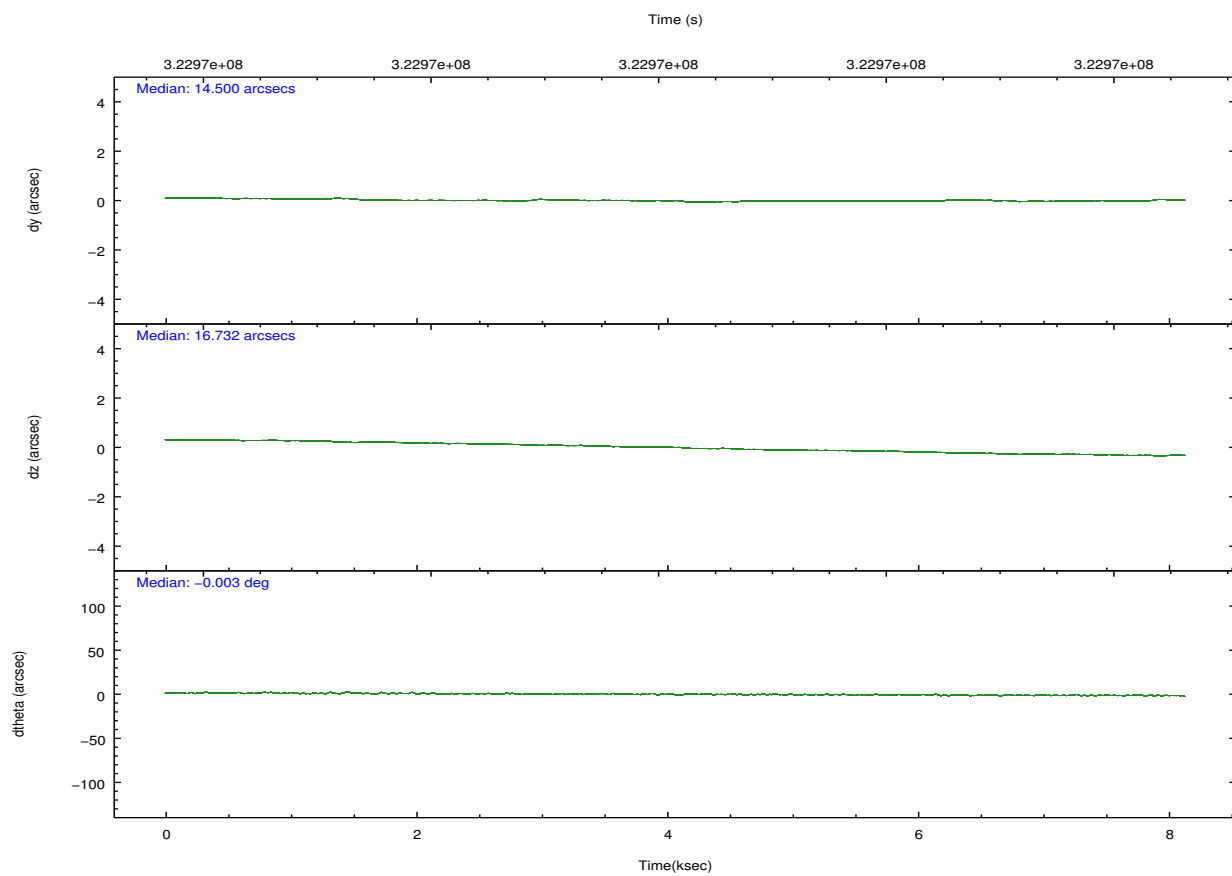
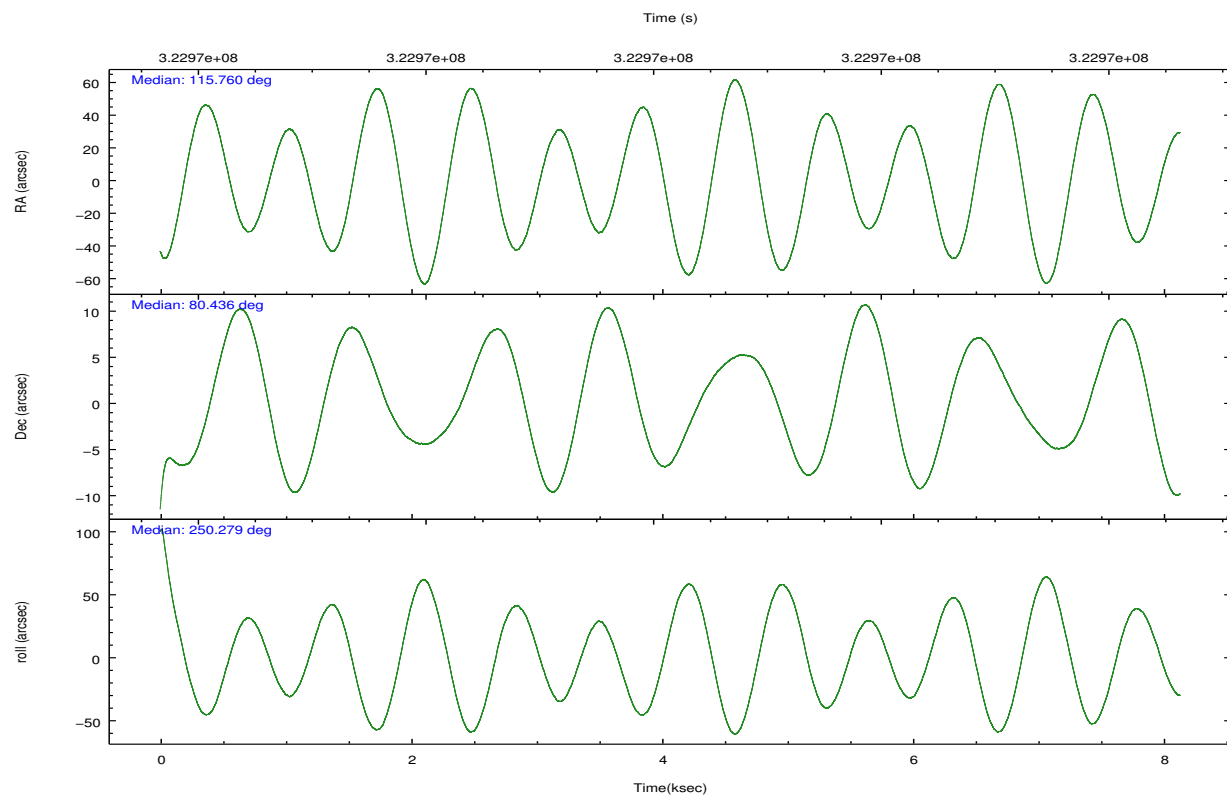
	ccd 2	ccd 3	ccd 6	ccd 7
grade 0 events	2638	2485	2740	3633
	3%	3%	3%	4%
grade 1 events	42	41	36	99
	0%	0%	0%	0%
grade 2 events	1736	1542	1648	7805
	2%	2%	2%	9%
grade 3 events	749	769	778	3528
	0%	1%	1%	4%
grade 4 events	801	792	843	3536
	1%	1%	1%	4%
grade 5 events	2585	2907	3009	8559
	3%	4%	4%	10%
grade 6 events	1417	1334	1601	19684
	1%	1%	2%	23%
grade 7 events	66240	61135	61951	36287
	86%	86%	85%	43%

2.2 Compared Parameters

Parameter	Planned	Actual	Parameter	Planned	Actual
Instrument	ACIS	ACIS	Obspar format version number	7	7
Detector	ACIS-2367	ACIS-2367	Obspar file type	PREDICTED	ACTUAL
Grating	NONE	NONE	Obspar update status	NONE	UPDATED
Data mode	VFAINT	VFAINT	Number of optional ACIS chips dropped	0	0
Observation mode	POINTING	POINTING	On-chip summing requested	N	N
[deg] Pointing RA	115.730146	115.7619176031852	Subarray requested	NONE	NONE
[deg] Pointing Dec	80.462535	80.43565413271159	Alternating exposures requested	N	N
[deg] Pointing Roll	250.176481	250.3018628872307	[s] Primary exposure time	0.000000	3.1
[mm] SIM focus pos	-0.684267	-0.6828225247311905			
[mm] SIM defocus	0	0.001444936568705701			
[mm] SIM translation stage pos	-190.132523	-190.1425803651734			
[mm] SIM translation stage offset	0	0.01005778216563158			
[s] Observation start time (MET)	322966204.184000	322964767.4636			
Observation start date	2008-03-27T00:48:59	2008-03-27T00:26:07			
[s] Observation end time (MET)	322974204.184000	322974865.25159			
Observation end date	2008-03-27T03:02:19	2008-03-27T03:14:25			
Read mode	TIMED	TIMED			

2.3 Aspect



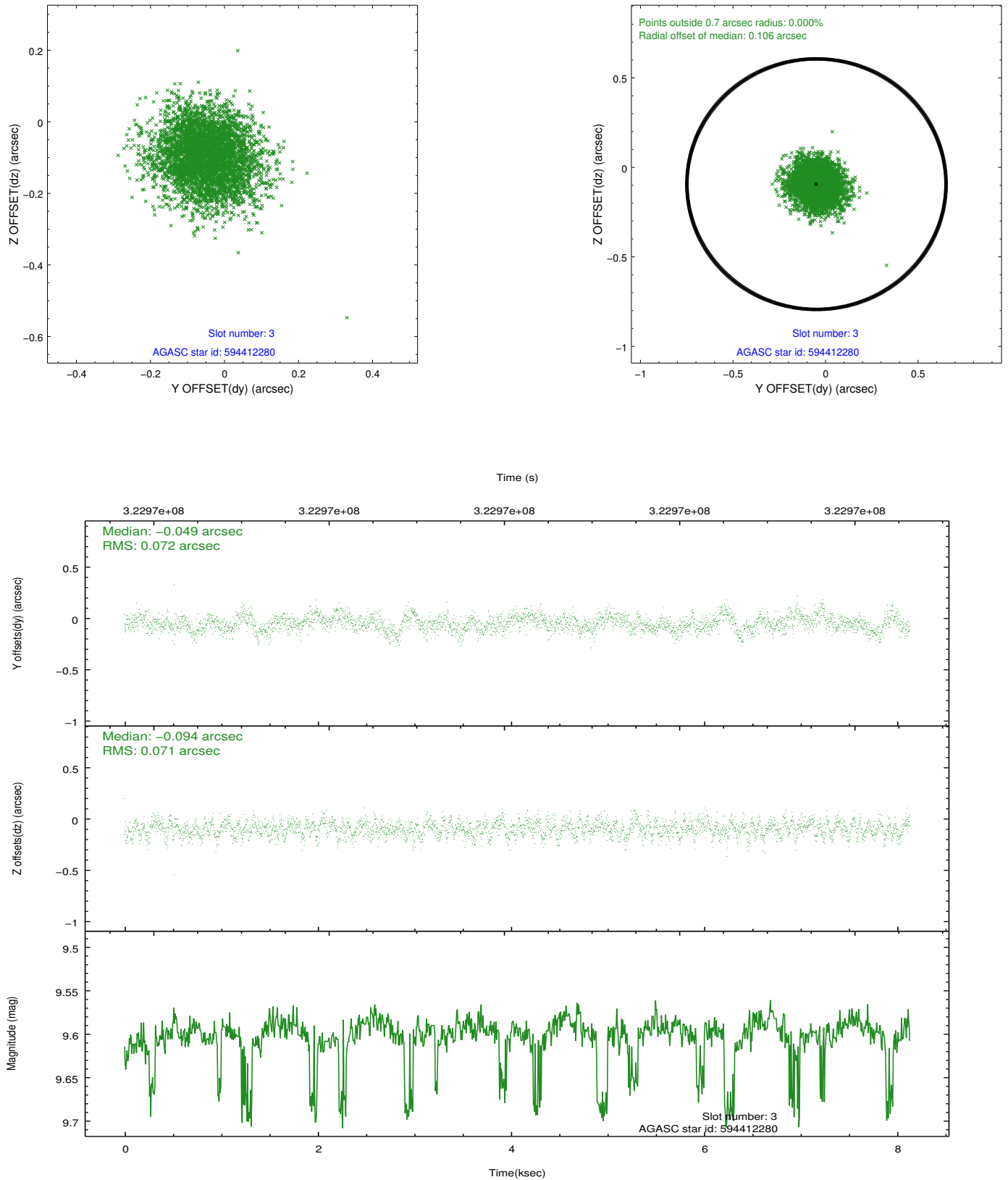


Slot Statistics

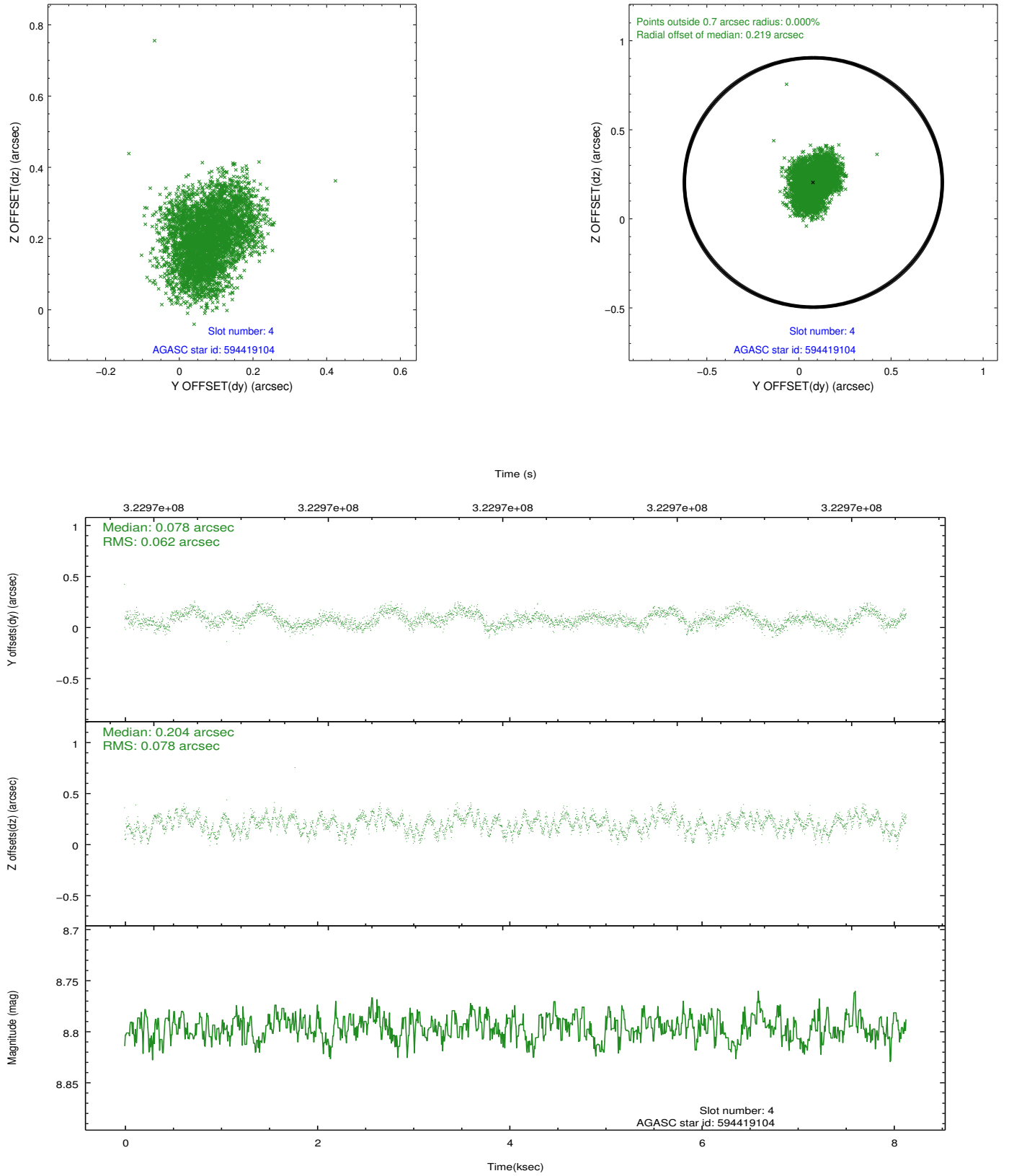
slot	status	id	mag	n_pts	med_dy	med_dz	dr1	dr2	ra	dec	mean_y	mean_z
0	FID	ACIS-S-2	7.09	1984	-0.067	-0.040	0.010	0.016	0.000000	0.000000	-767.56	-1738.13
1	FID	ACIS-S-4	7.18	1984	0.187	0.043	0.006	0.013	0.000000	0.000000	2145.68	169.68
2	FID	ACIS-S-5	7.22	1984	-0.152	0.006	0.009	0.016	0.000000	0.000000	-1819.58	164.16
3	GUIDE	594412280	9.60	3937	-0.049	-0.094	0.107	0.173	116.927425	80.286977	340.26	896.79
4	GUIDE	594419104	8.80	3968	0.078	0.204	0.108	0.166	115.684117	80.555743	-306.47	-138.17
5	GUIDE	594420832	6.60	3968	-0.035	-0.212	0.079	0.121	119.071804	80.265538	-77.67	2129.89
6	GUIDE	594939008	9.87	3959	-0.070	0.036	0.143	0.230	112.733668	80.866397	-828.29	-2117.09
7	GUIDE	594935864	9.69	3959	0.069	0.062	0.149	0.229	112.198610	80.829881	-614.72	-2374.08

2.4 Star Slots

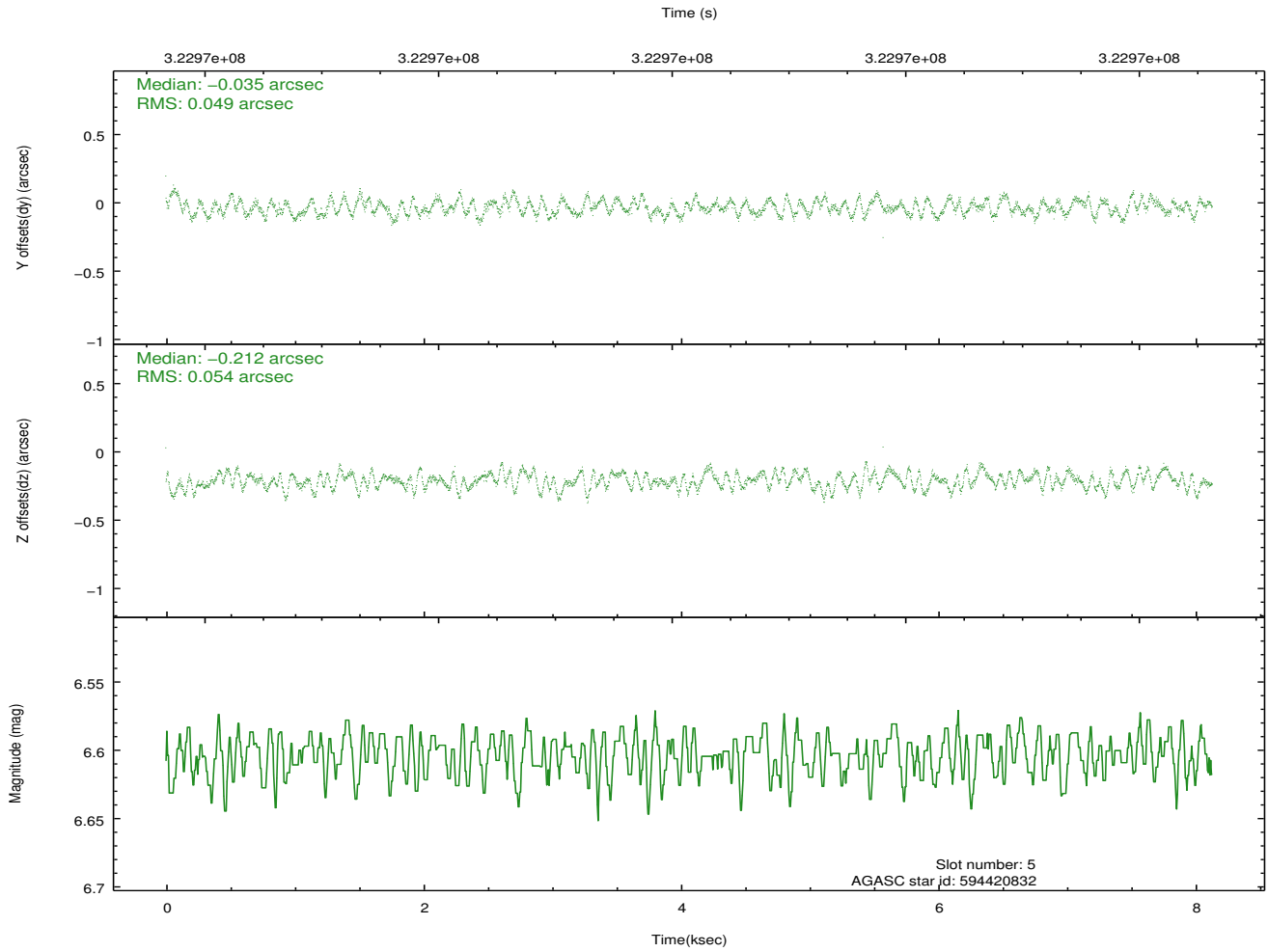
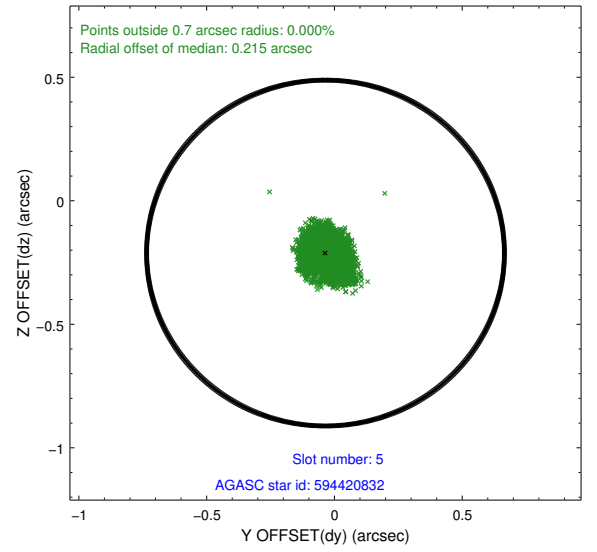
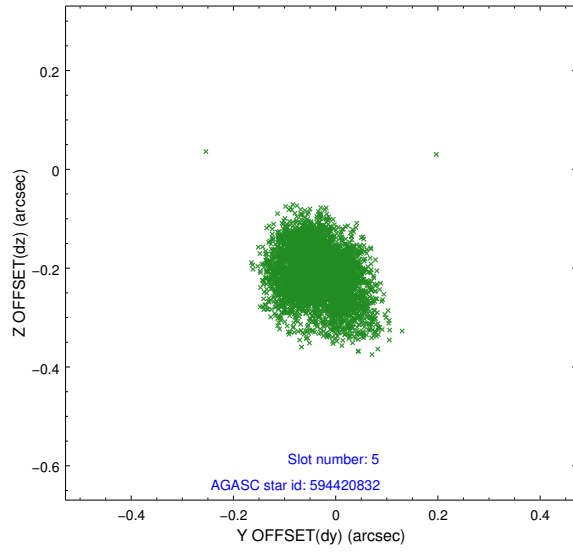
2.4.1 Slot 3



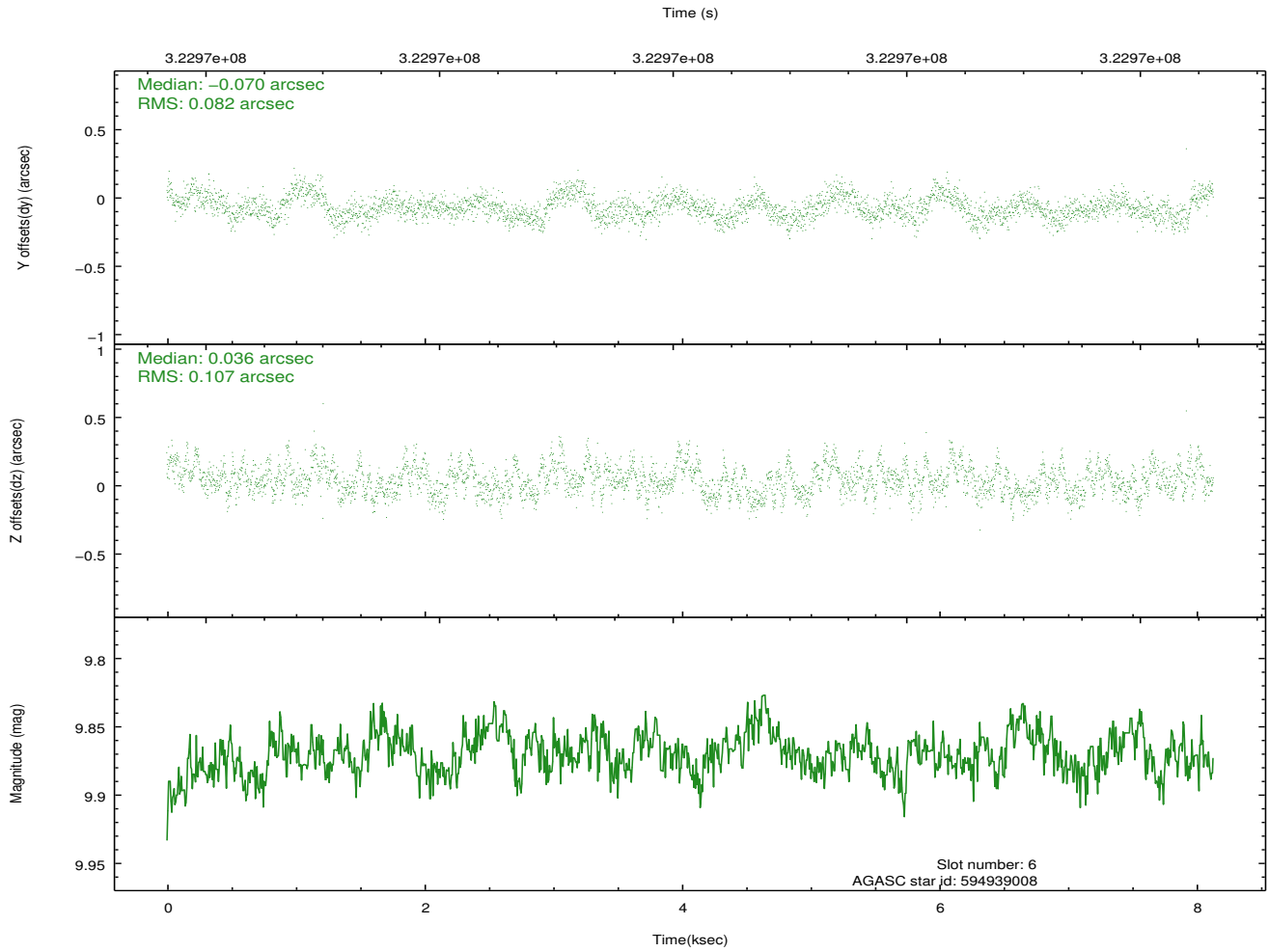
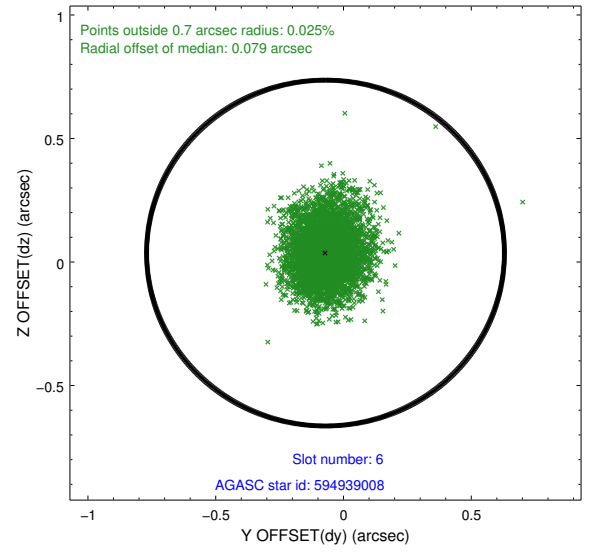
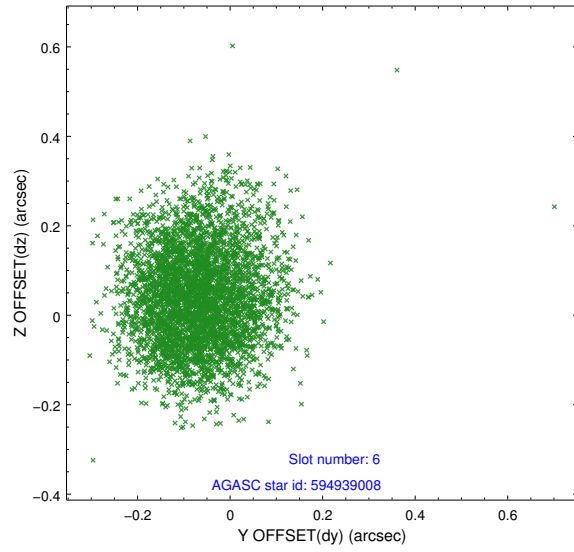
2.4.2 Slot 4



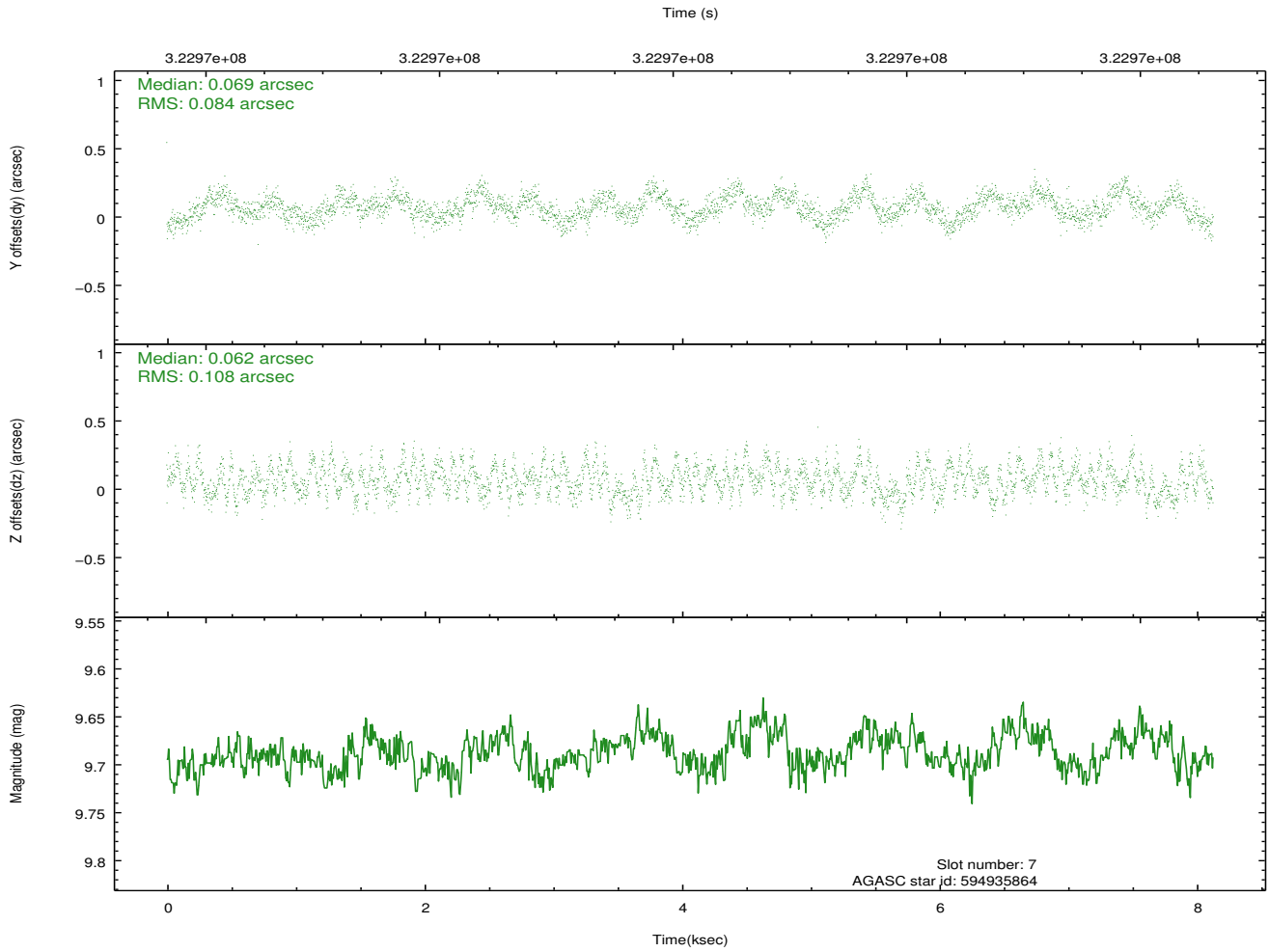
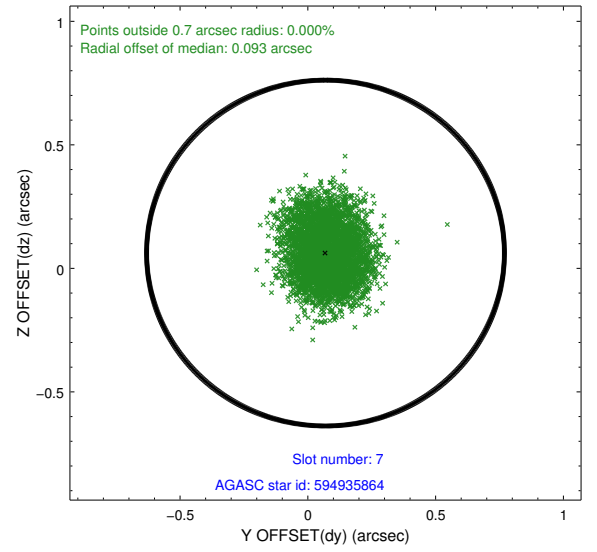
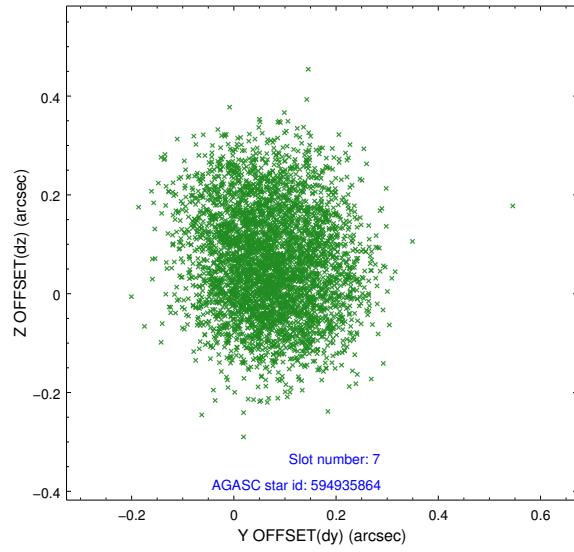
2.4.3 Slot 5



2.4.4 Slot 6

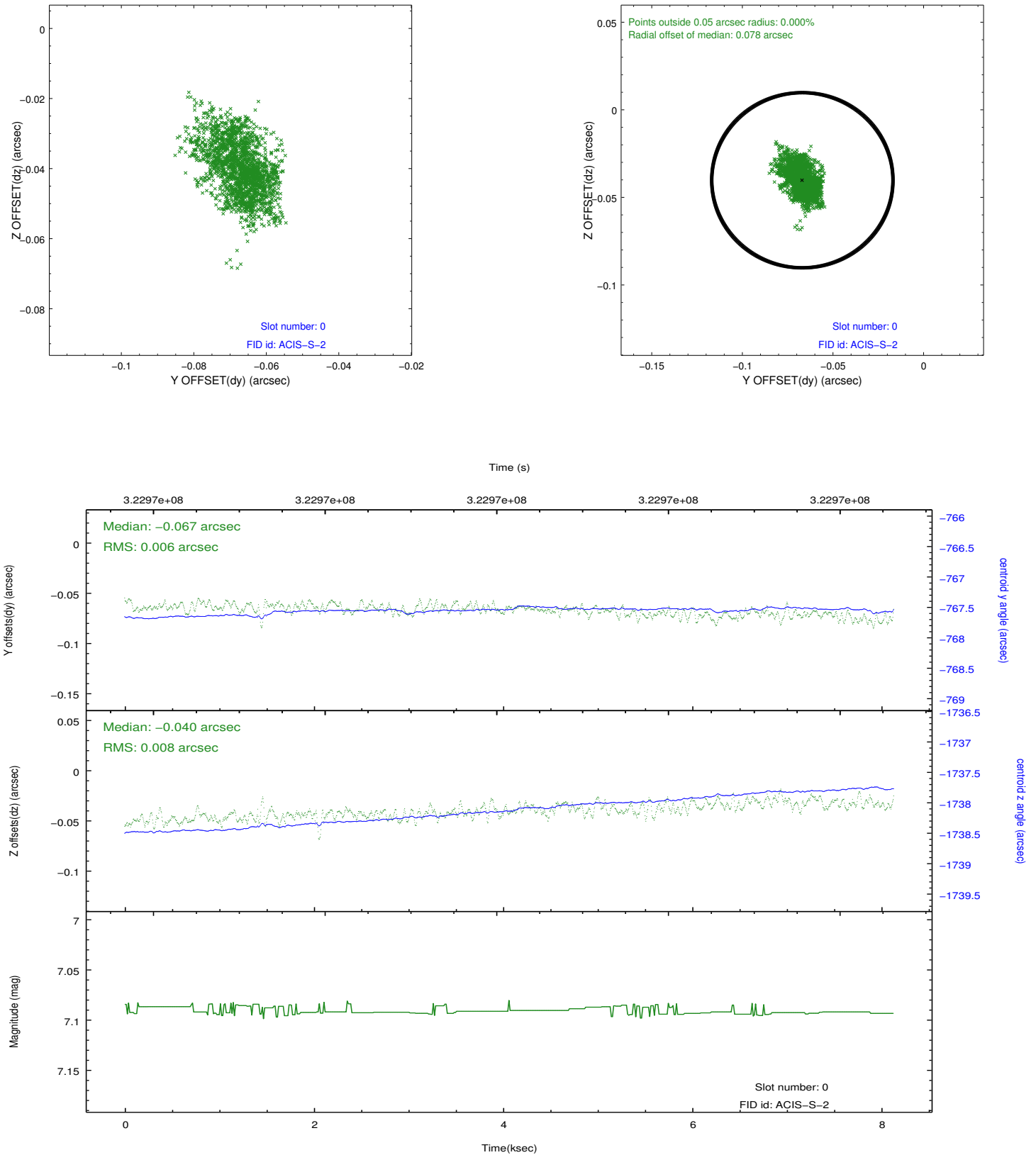


2.4.5 Slot 7

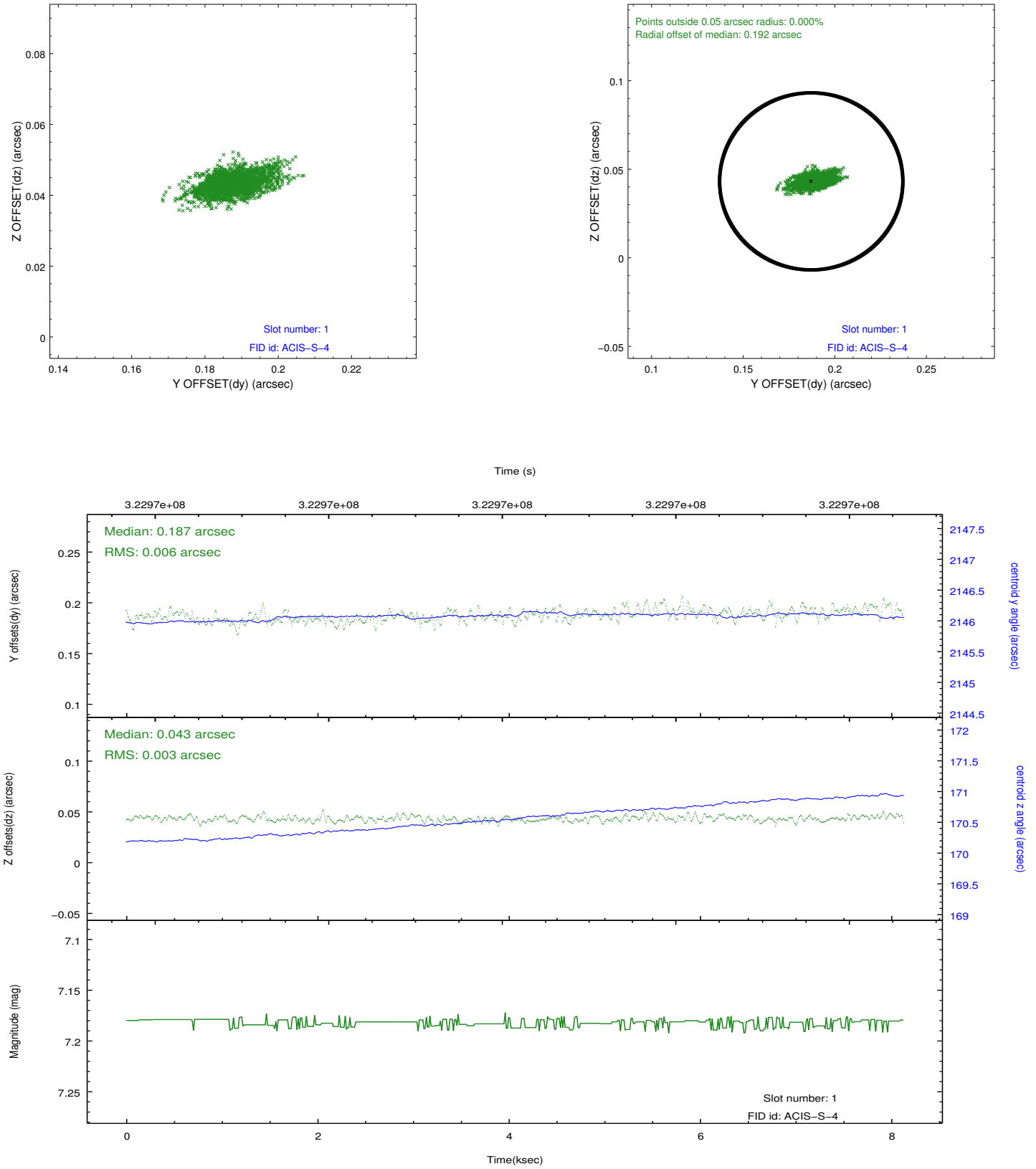


2.5 FID Slots

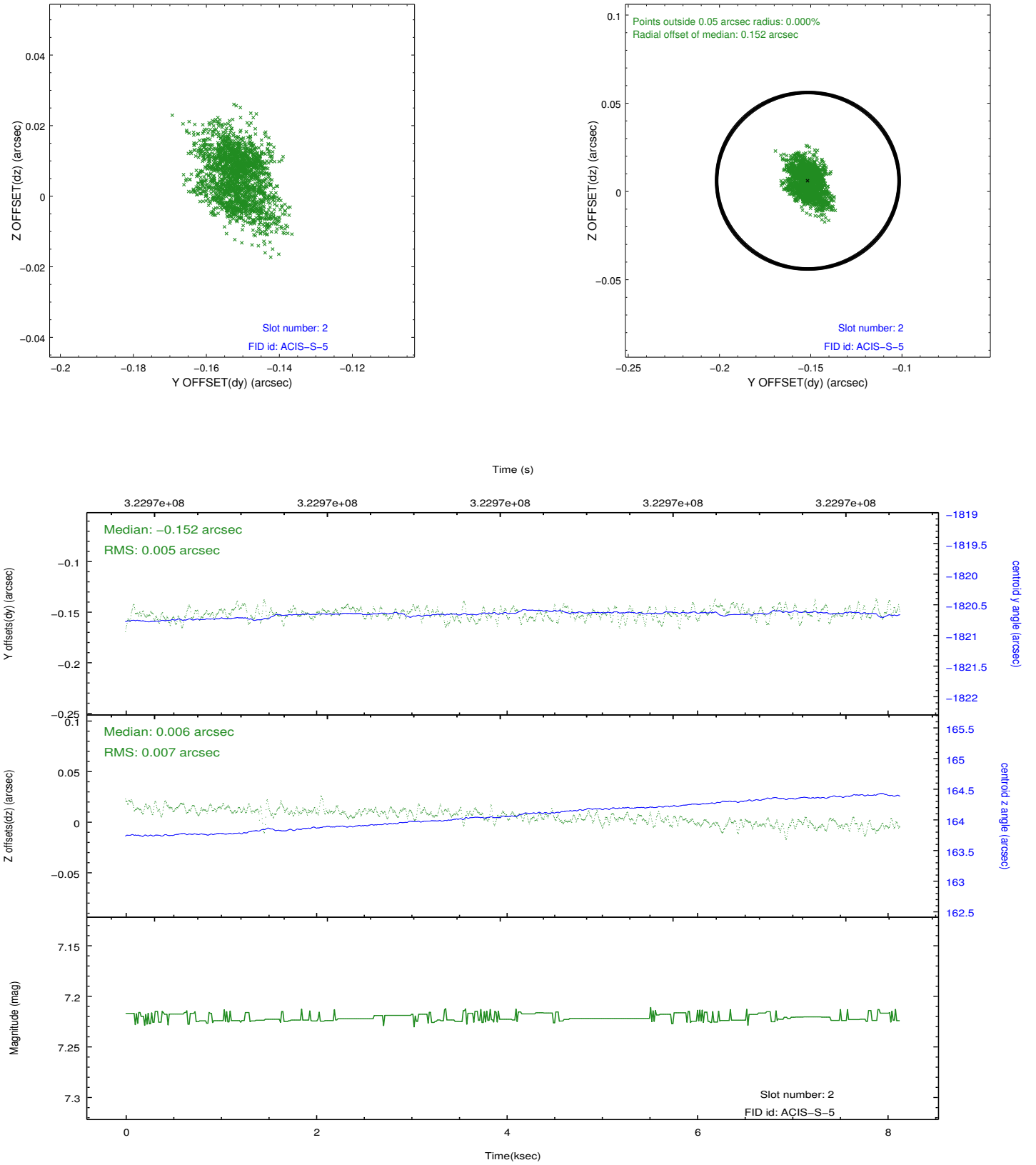
2.5.1 Slot 0



2.5.2 Slot 1



2.5.3 Slot 2



A Summary

A.1 Status

V&V Scientist	Jen Lauer
V&V Date (YYYY-MM-DD)	2012.05.14
V&V Edition	1
V&V Disposition and Status	OK
V&V Charge Time	8.12820006

A.2 Comments