

V&V Reference Report

L2 ASCDS Version : 8.4.4

Observation 9292 - L2 Version 2
Chandra X-Ray Center

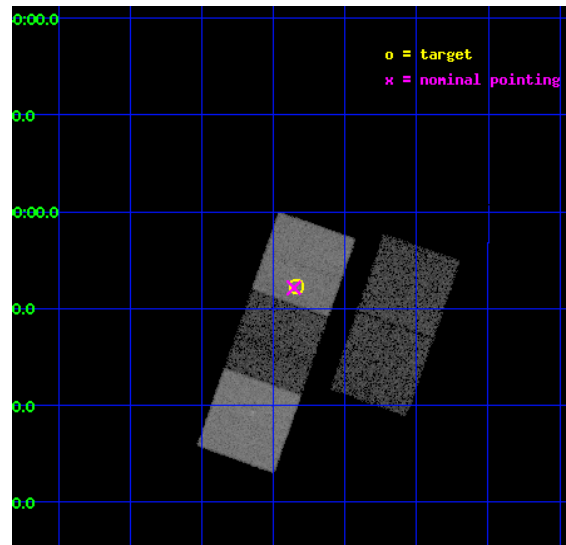
L2 Processing Date : May 9 2012

Contents

1	Front	2
2	OBI	3
2.1	OBI	3
2.1.1	Images	3
2.1.2	Bias	3
2.1.3	Parameters	4
2.1.4	Events	4
2.2	Compared Parameters	5
2.3	Aspect	6
2.4	Star Slots	9
2.4.1	Slot 3	9
2.4.2	Slot 4	10
2.4.3	Slot 5	11
2.4.4	Slot 6	12
2.4.5	Slot 7	13
2.5	FID Slots	14
2.5.1	Slot 0	14
2.5.2	Slot 1	15
2.5.3	Slot 2	16
A	Summary	17
A.1	Status	17
A.2	Comments	17

1 Front

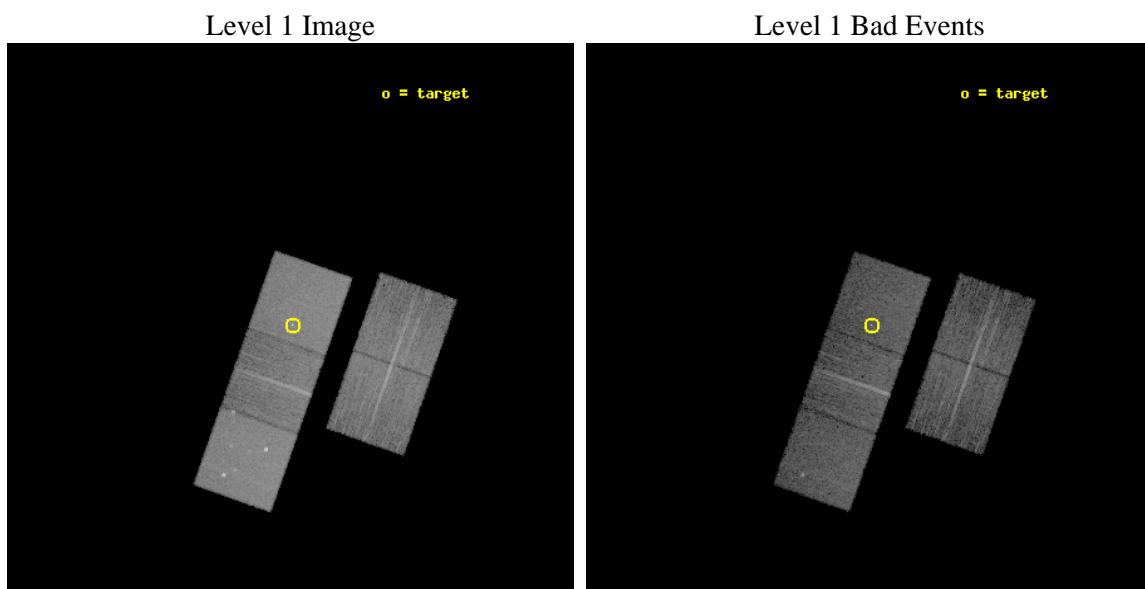
seq_num	701732	Sequence number
obs_id	9292	Observation id
title	Towards a Complete Sample: 3CR Extragalactic Radio Sources with $z < 0.3$	Proposal title
observer	Dr. Daniel Harris	Principal investigator
object	3C17	Source name
dtcycle	0	
cycle	P	events from which exps? Prim/Second/Both
ra_targ	9.585417	Observer's specified target RA [deg]
dec_targ	-2.127861	Observer's specified target Dec [deg]
ra_nom	9.5892165309906	Nominal RA [deg]
dec_nom	-2.1309628408309	Nominal Dec [deg]
roll_nom	289.40002519054	Nominal Roll [deg]
revision	2	Processing version of data
ontime	8034.7526868582	Sum of GTIs [s]
livetime	7929.7727279055	Livetime [s]
ontime2	8034.588526845	Sum of GTIs [s]
ontime3	8031.4886064529	Sum of GTIs [s]
ontime5	8034.7116468549	Sum of GTIs [s]
ontime6	8034.6706068516	Sum of GTIs [s]
ontime7	8034.7526868582	Sum of GTIs [s]
l2events	122781	Number of level 2 events



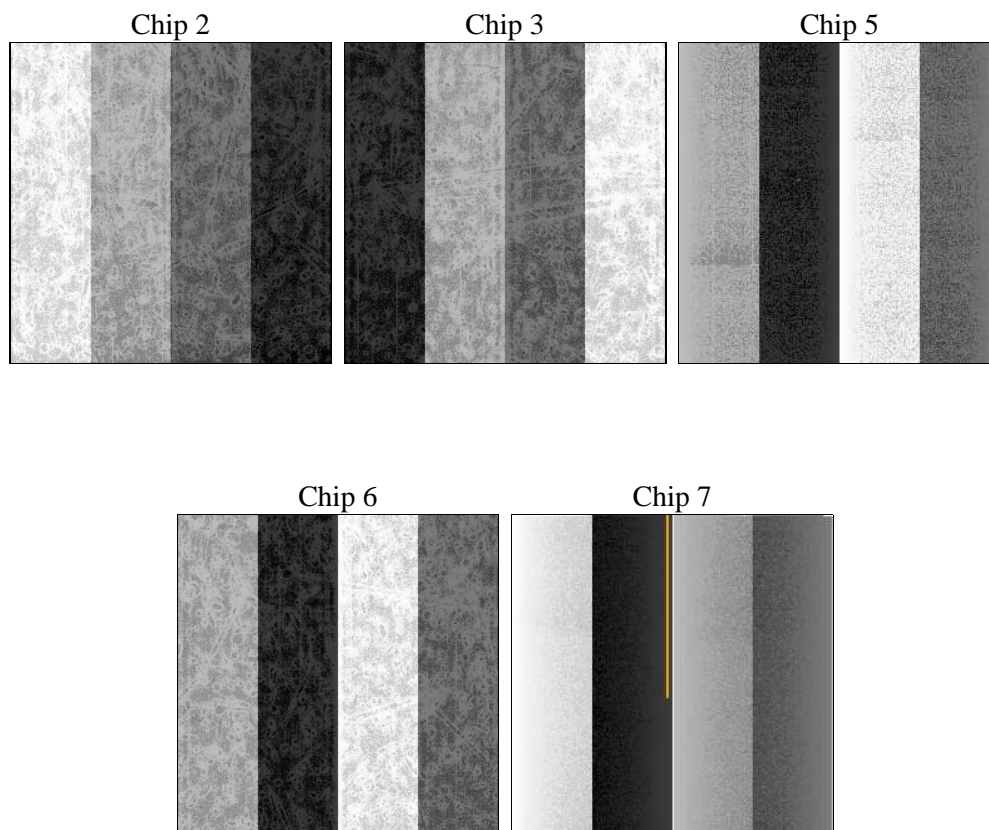
2 OBI

2.1 OBI

2.1.1 Images



2.1.2 Bias



2.1.3 Parameters

obi_num	0	Obi number	sched_exp_time	8000.000000	[s] Scheduled observation exposure time
ascdsver	8.4.4	Processing system revision	ontime	8034.7526868582	Sum of GTIs [s]
caldsver	4.4.9	 	ontime2	8034.588526845	Sum of GTIs [s]
date	2012-05-09T02:51:15	Date and time of file creation	ontime3	8031.4886064529	Sum of GTIs [s]
revision	2	Processing version of data	ontime5	8034.7116468549	Sum of GTIs [s]
			ontime6	8034.6706068516	Sum of GTIs [s]
			ontime7	8034.7526868582	Sum of GTIs [s]
			l1events	467077	Number of level 1 events

2.1.4 Events

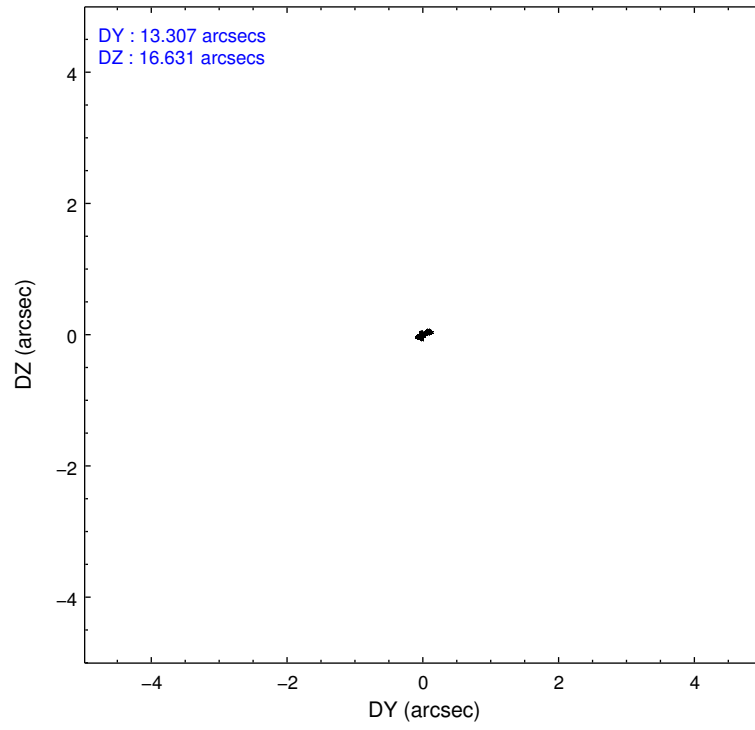
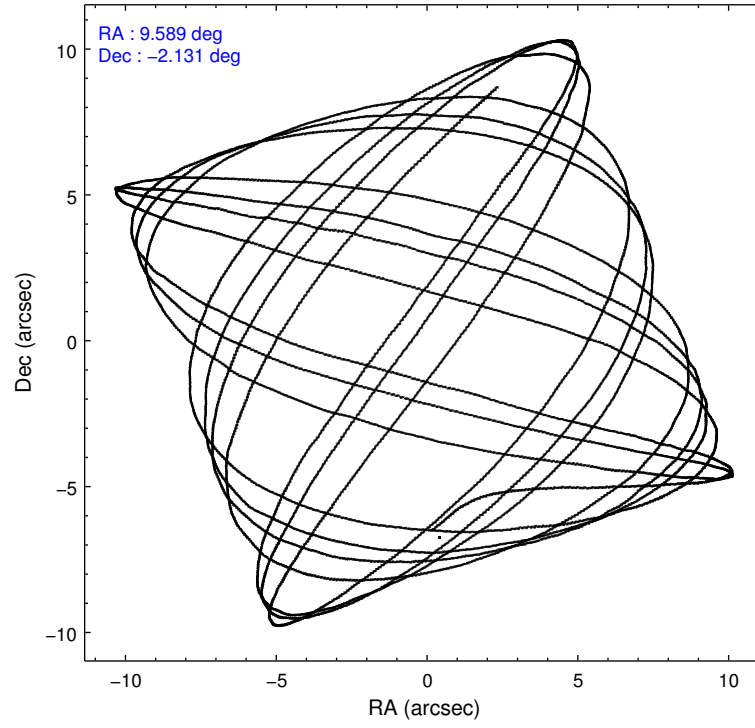
	ccd 2	ccd 3	ccd 5	ccd 6	ccd 7
level 1 events	77916	75084	122475	80336	111266
rejected events	68383	65965	64941	70788	64655
rejected %	87%	87%	53%	88%	58%

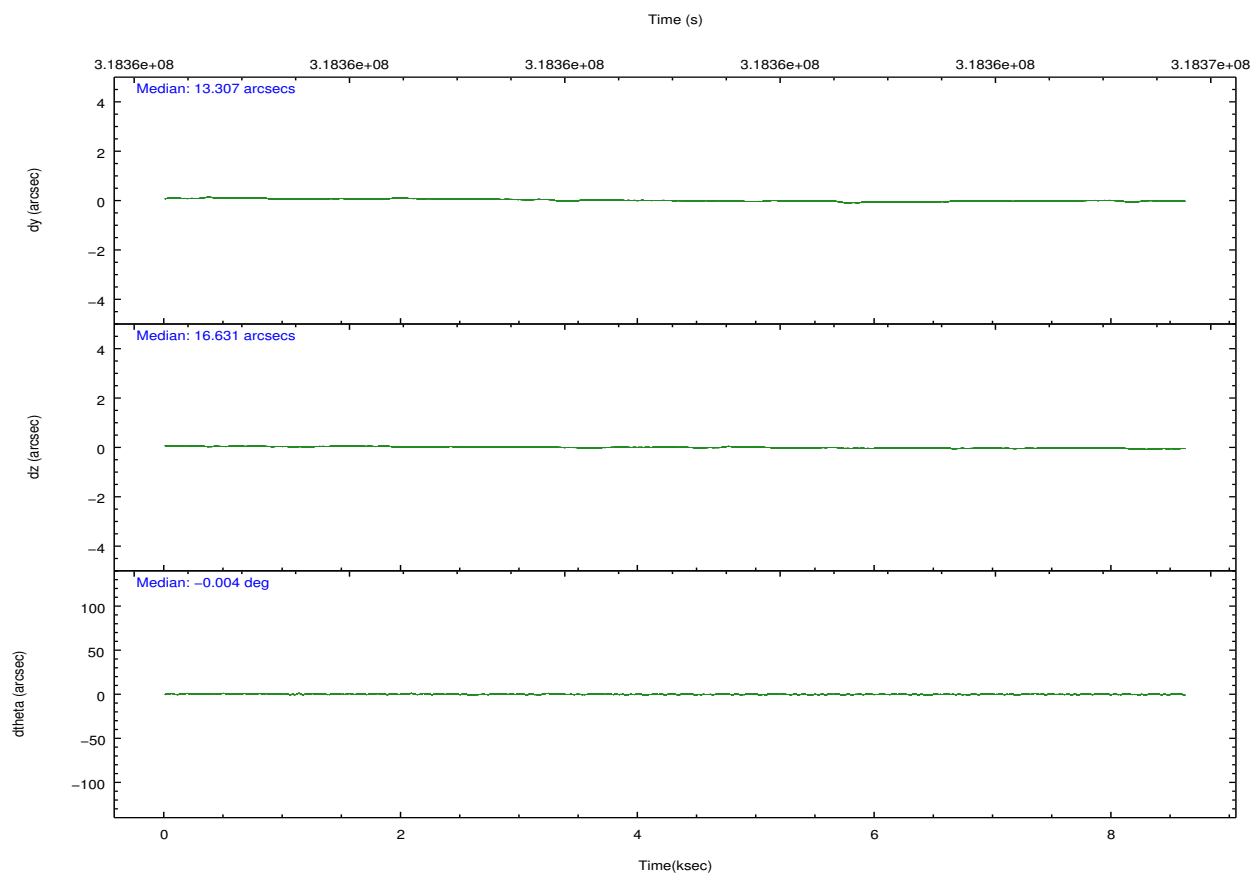
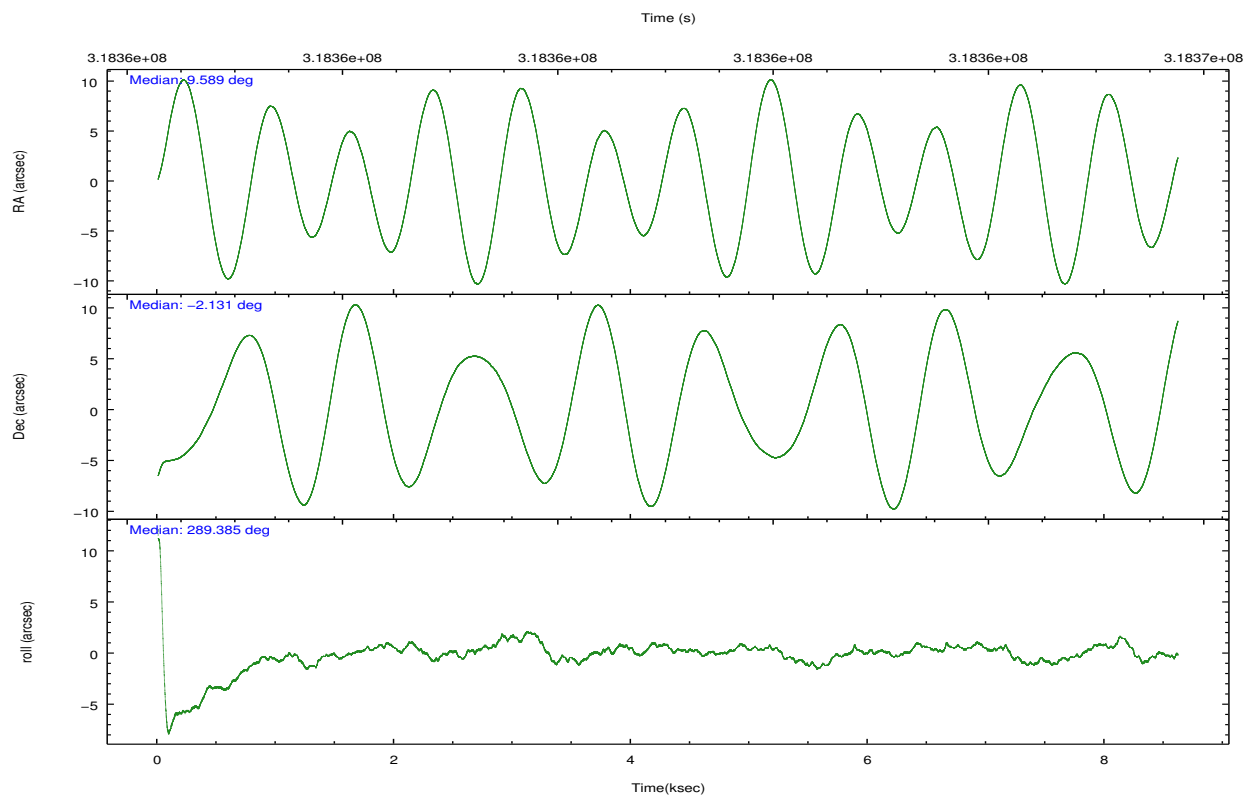
	ccd 2	ccd 3	ccd 5	ccd 6	ccd 7
grade 0 events	4158	3871	6261	3686	4090
	5%	5%	5%	4%	3%
grade 1 events	60	46	186	45	147
	0%	0%	0%	0%	0%
grade 2 events	2041	1821	17528	2123	9637
	2%	2%	14%	2%	8%
grade 3 events	852	897	2083	871	4033
	1%	1%	1%	1%	3%
grade 4 events	873	897	1932	906	3871
	1%	1%	1%	1%	3%
grade 5 events	3095	3768	8648	3835	10307
	3%	5%	7%	4%	9%
grade 6 events	1619	1636	29775	1969	25018
	2%	2%	24%	2%	22%
grade 7 events	65218	62148	56062	66901	54163
	83%	82%	45%	83%	48%

2.2 Compared Parameters

Parameter	Planned	Actual	Parameter	Planned	Actual
Instrument	ACIS	ACIS	Obspar format version number	7	7
Detector	ACIS-23567	ACIS-23567	Obspar file type	PREDICTED	ACTUAL
Grating	NONE	NONE	Obspar update status	NONE	UPDATED
Data mode	VFAINT	VFAINT	CCD I0 on	N	N
Observation mode	POINTING	POINTING	CCD I1 on	N	N
[deg] Pointing RA	9.568181	9.589216530990642	CCD I2 on	Y	Y
[deg] Pointing Dec	-2.113398	-2.130962840830924	CCD I3 on	Y	Y
[deg] Pointing Roll	289.242592	289.4000251905445	CCD S0 on	N	N
[mm] SIM focus pos	-0.684267	-0.6828225247311905	CCD S1 on	O1	Y
[mm] SIM defocus	0	0.001444936568705701	CCD S2 on	Y	Y
[mm] SIM translation stage pos	-190.132523	-190.1425803651734	CCD S3 on	Y	Y
[mm] SIM translation stage offset	0	0.01005778216563158	CCD S4 on	N	N
[s] Observation start time (MET)	318357329.184000	318356186.83971	CCD S5 on	N	N
Observation start date	2008-02-02T16:34:24	2008-02-02T16:16:26	Number of optional ACIS chips dropped	0	0
[s] Observation end time (MET)	318365329.184000	318366286.6777	On-chip summing requested	N	N
Observation end date	2008-02-02T18:47:44	2008-02-02T19:04:46	Subarray requested	NONE	NONE
Read mode	TIMED	TIMED	Alternating exposures requested	N	N
			[s] Primary exposure time	0.000000	3.1

2.3 Aspect



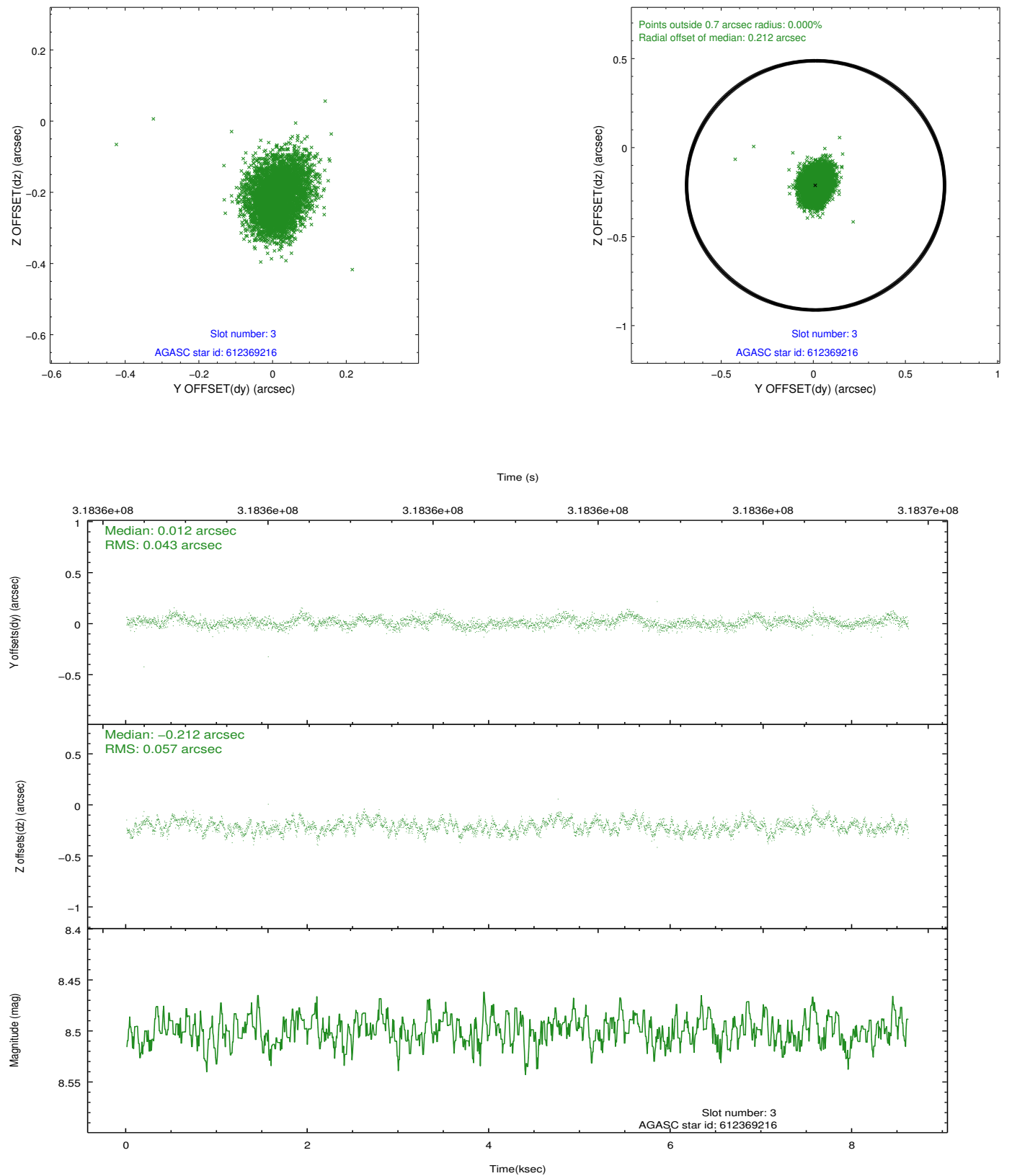


Slot Statistics

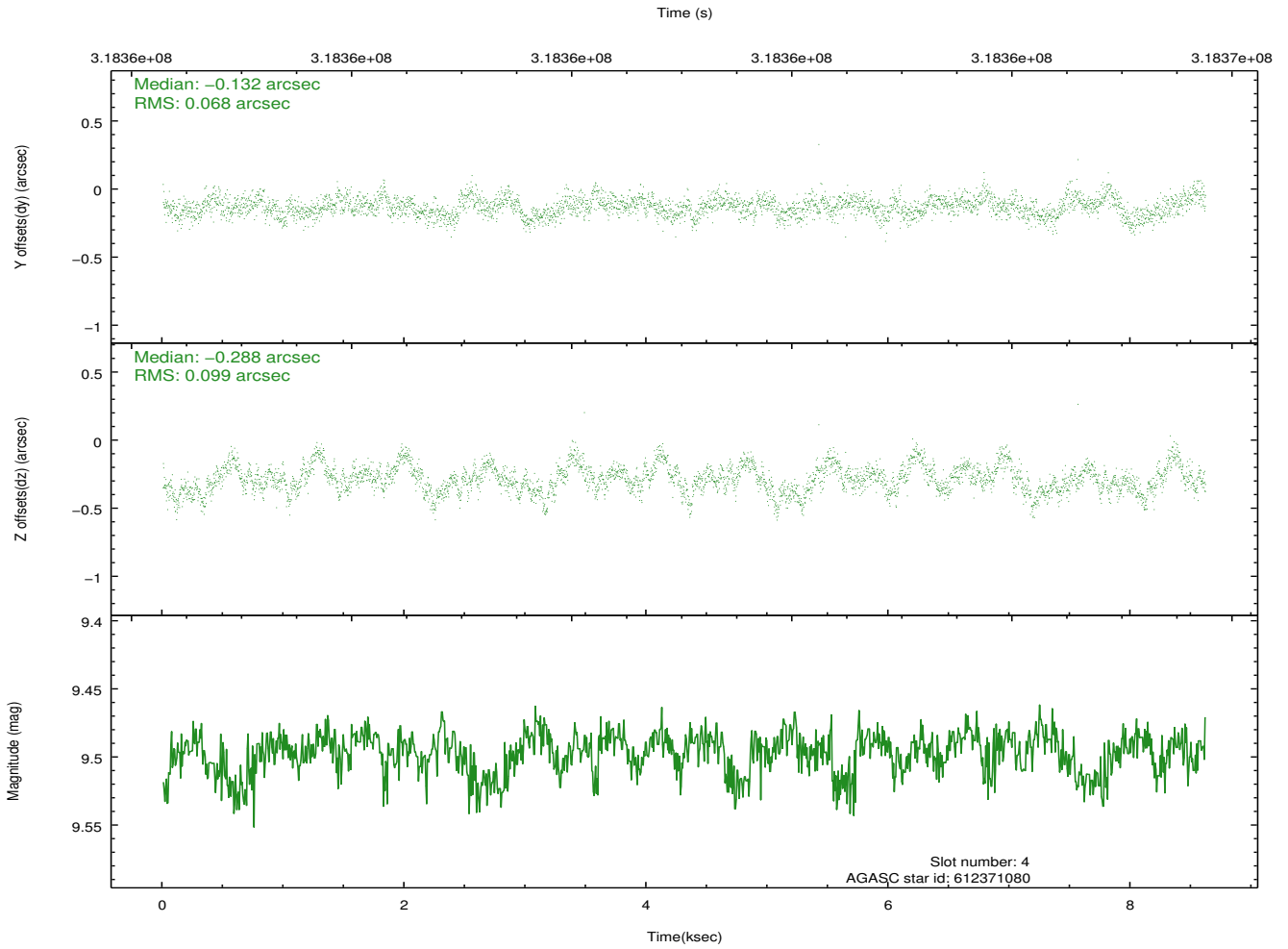
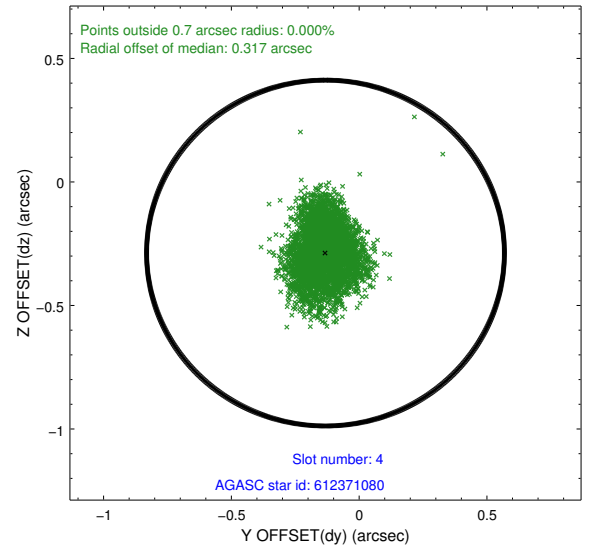
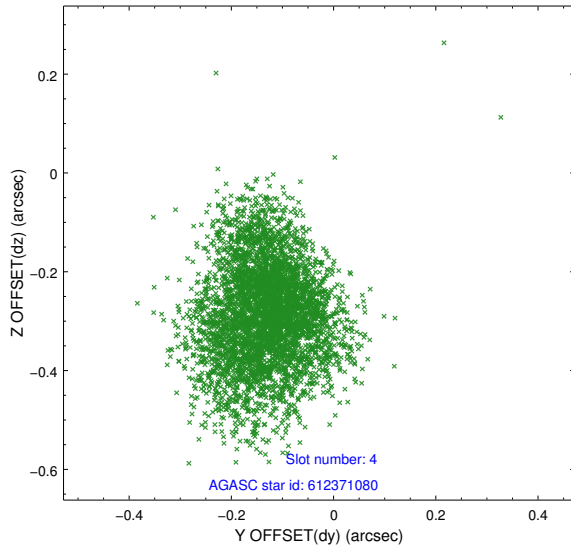
slot	status	id	mag	n_pts	med_dy	med_dz	dr1	dr2	ra	dec	mean_y	mean_z
0	FID	ACIS-S-2	7.09	2101	-0.031	-0.033	0.007	0.011	0.000000	0.000000	-766.28	-1738.03
1	FID	ACIS-S-4	7.18	2100	0.156	0.024	0.006	0.012	0.000000	0.000000	2146.89	169.82
2	FID	ACIS-S-5	7.22	2101	-0.156	0.018	0.007	0.012	0.000000	0.000000	-1818.42	164.24
3	GUIDE	612369216	8.50	4202	0.012	-0.212	0.076	0.121	9.828600	-1.967617	-186.50	1058.06
4	GUIDE	612371080	9.50	4198	-0.132	-0.288	0.126	0.209	9.552758	-1.710977	-1385.96	425.08
5	GUIDE	612371576	9.38	4196	0.084	0.878	0.119	0.194	8.886279	-2.066194	-967.89	-2259.00
6	GUIDE	612375128	9.73	4196	-0.011	-0.060	0.130	0.210	9.801798	-1.523082	-1729.71	1493.75
7	GUIDE	612505072	8.61	4200	0.046	-0.318	0.093	0.150	10.134448	-1.771015	-492.32	2329.82

2.4 Star Slots

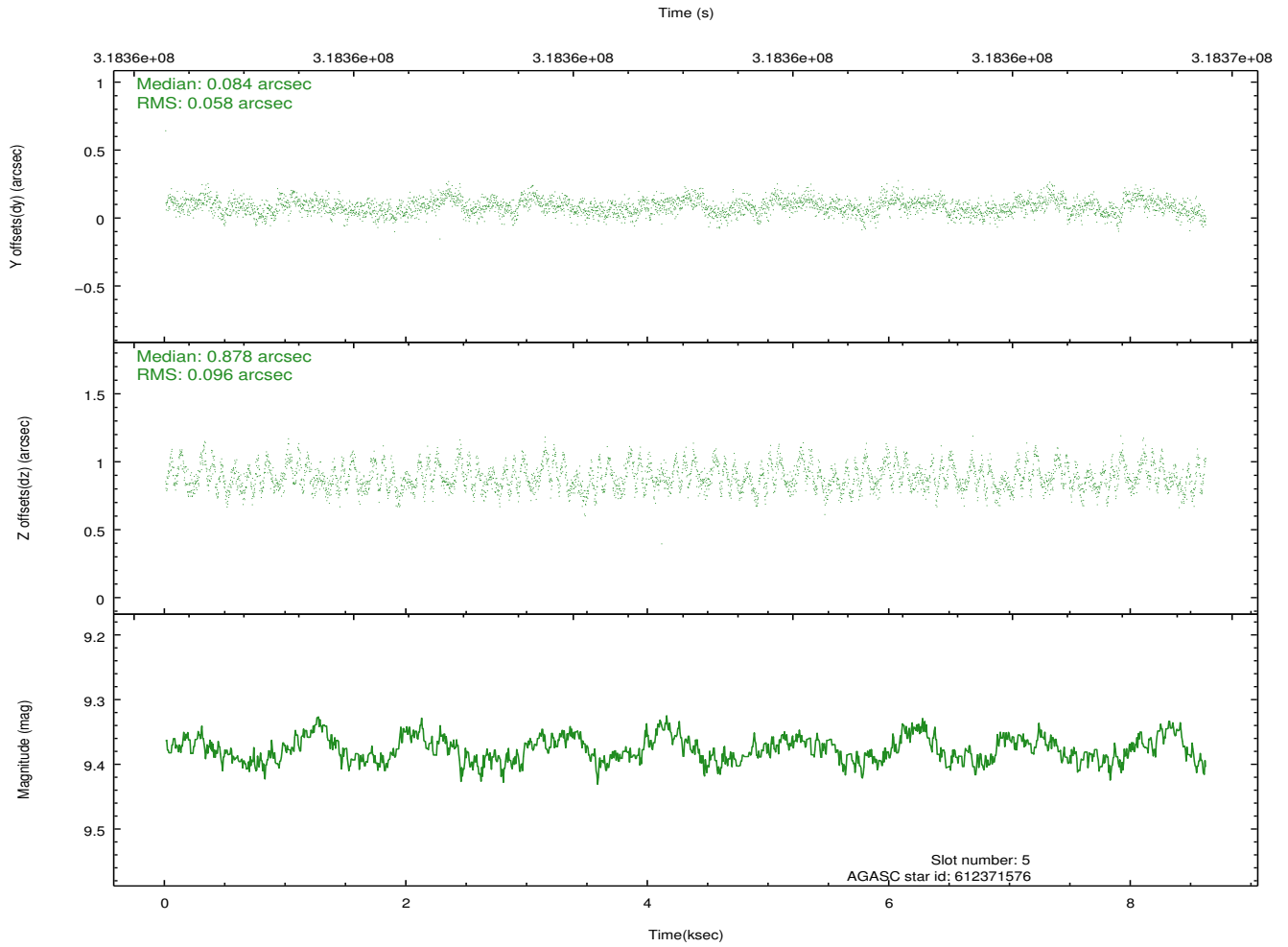
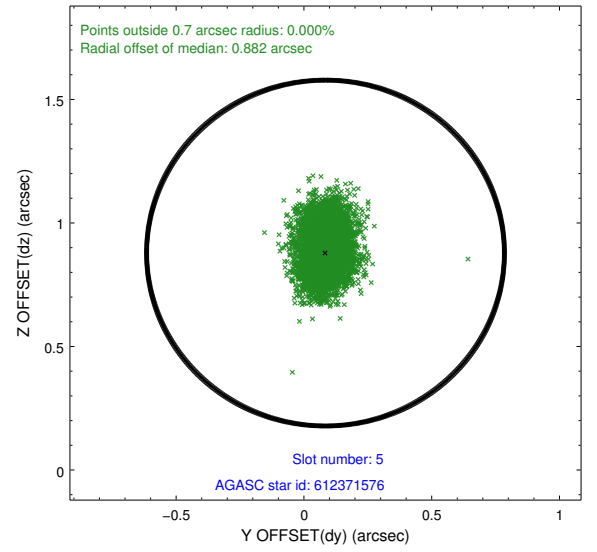
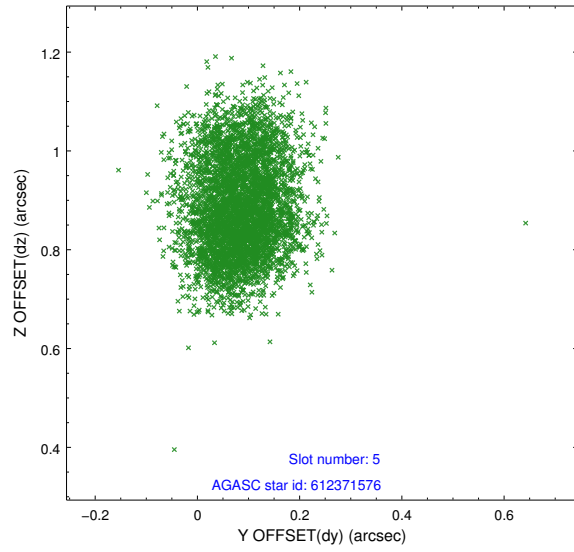
2.4.1 Slot 3



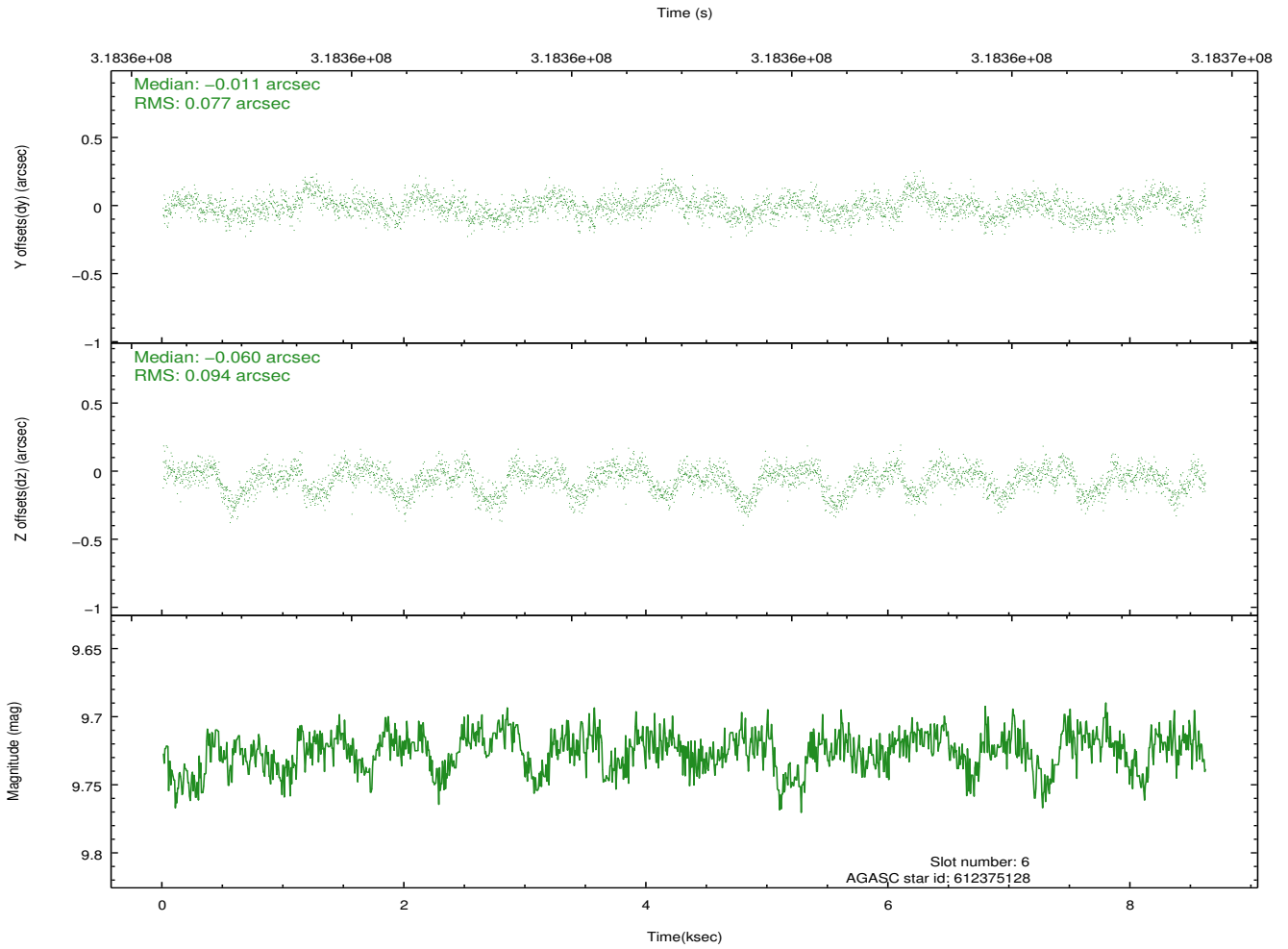
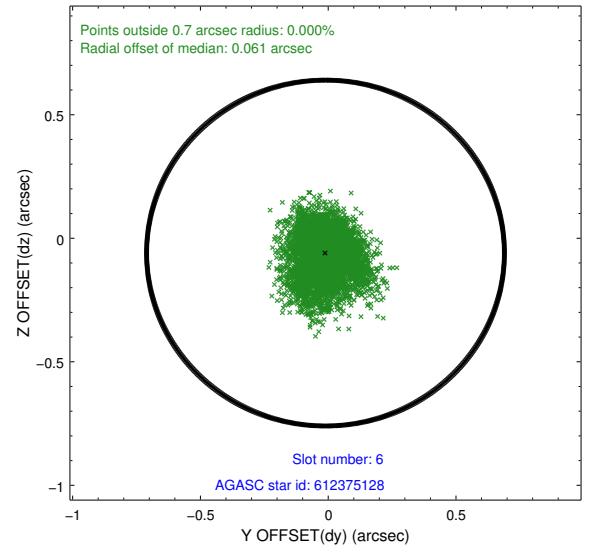
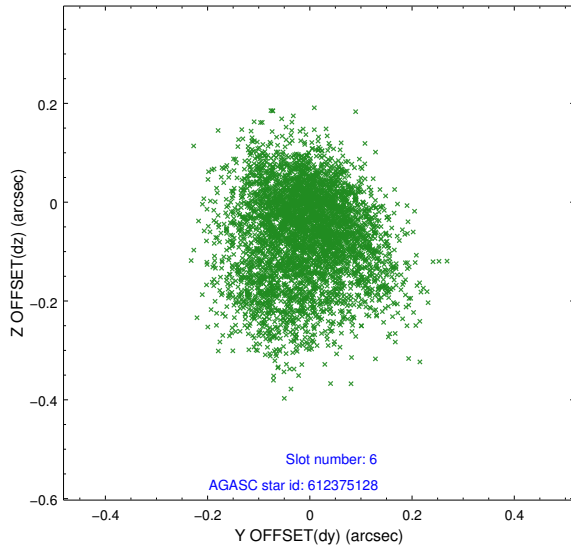
2.4.2 Slot 4



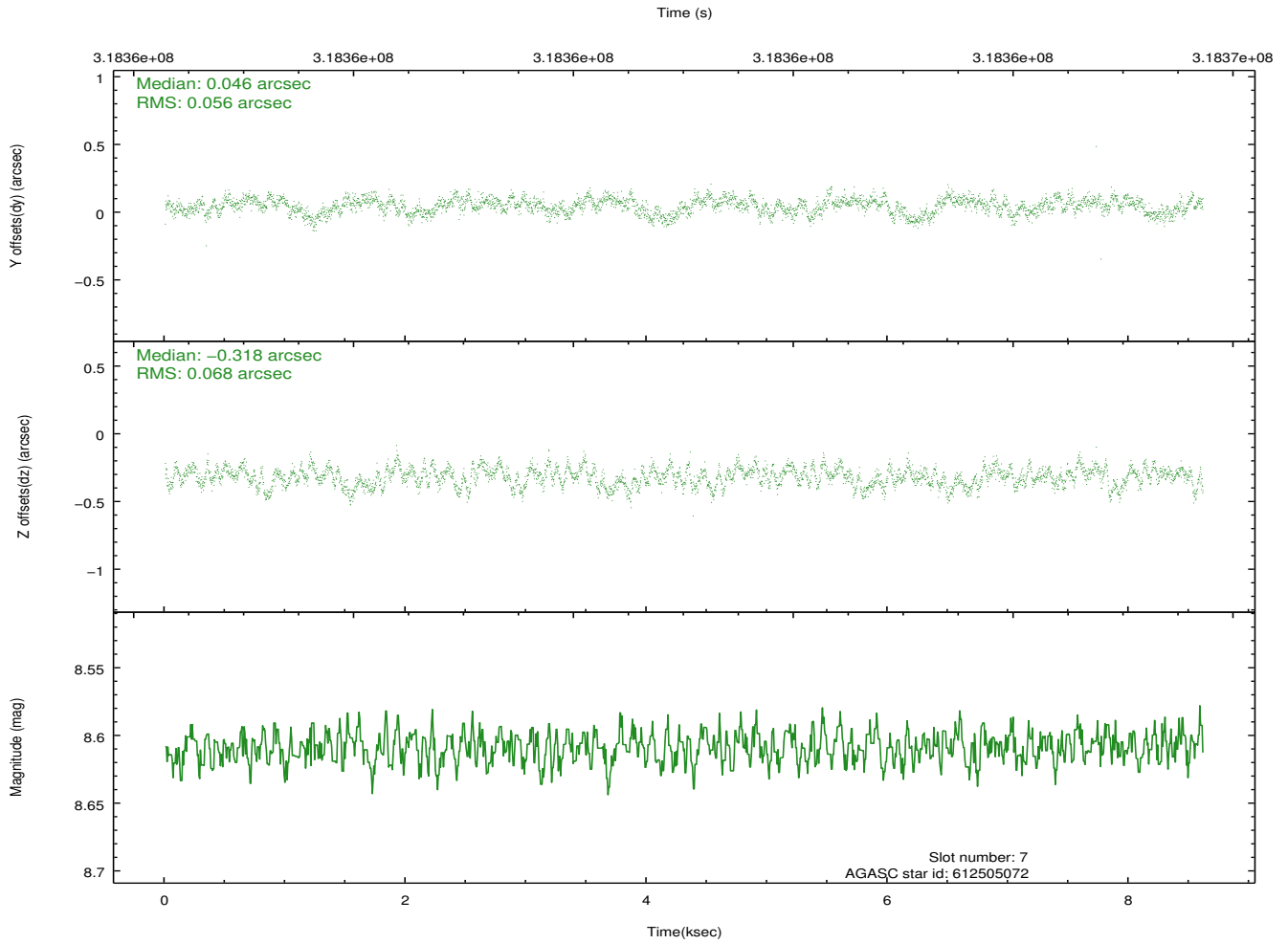
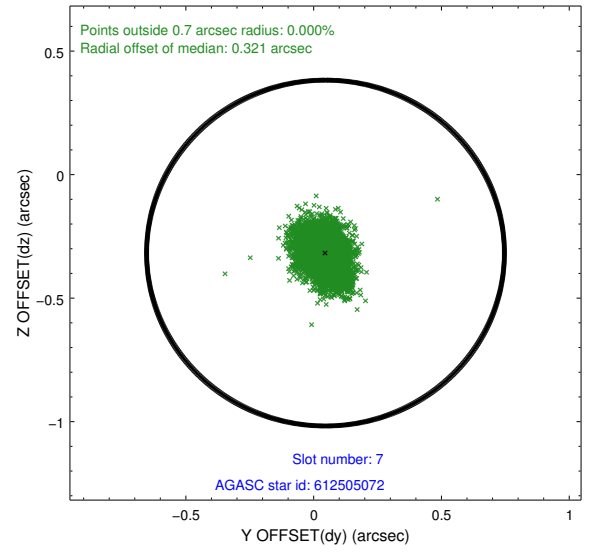
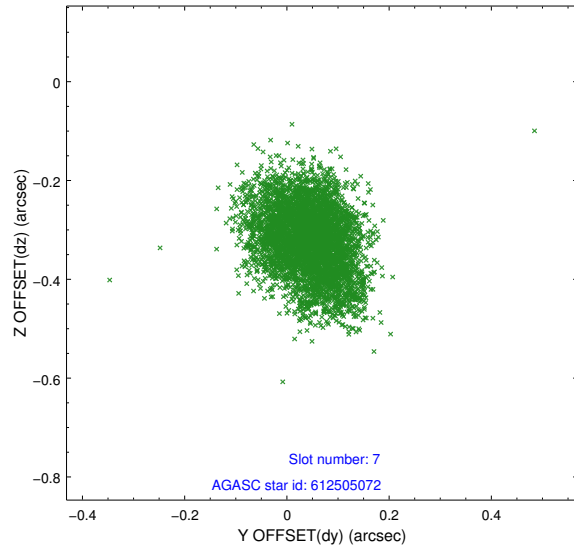
2.4.3 Slot 5



2.4.4 Slot 6

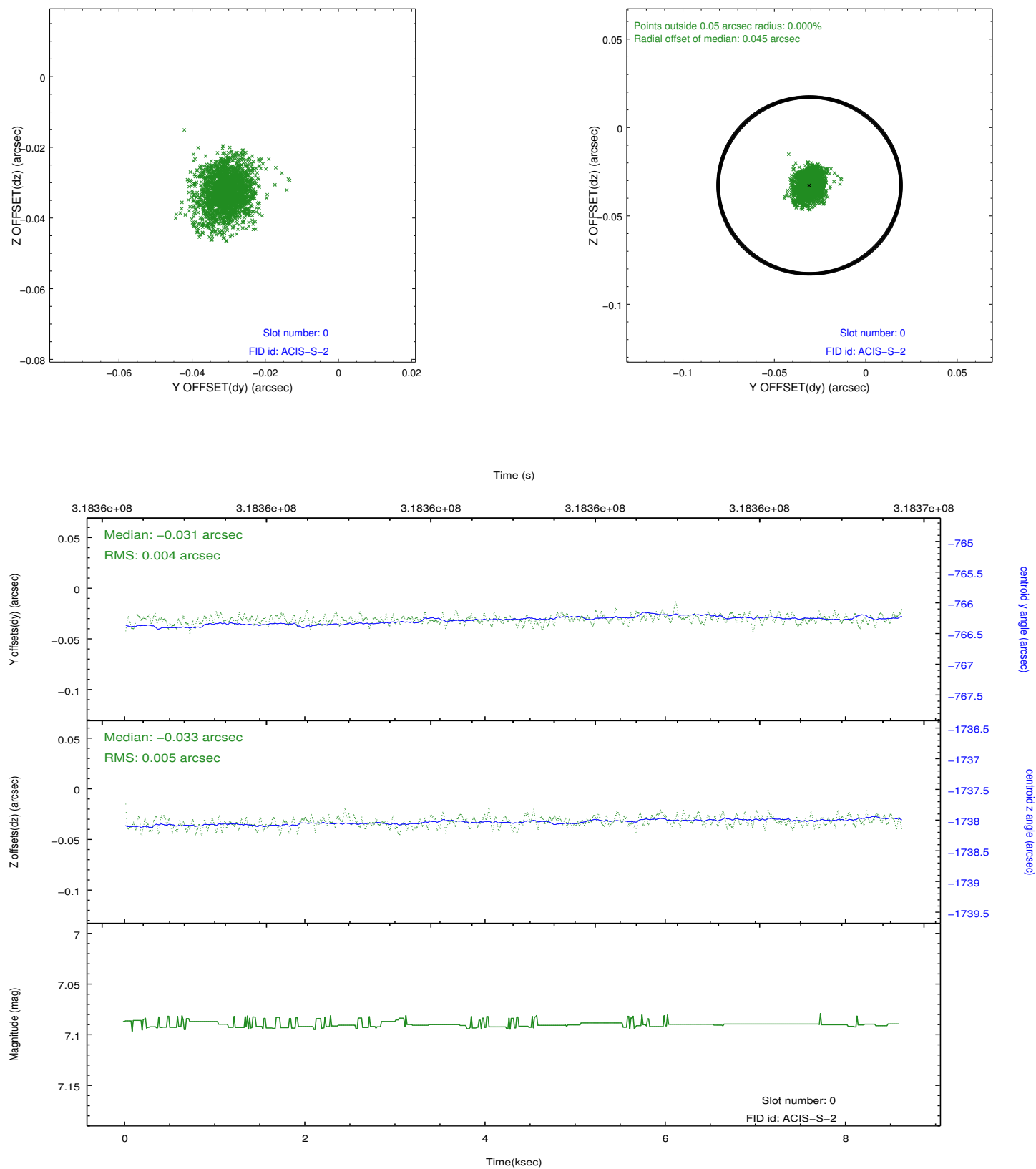


2.4.5 Slot 7

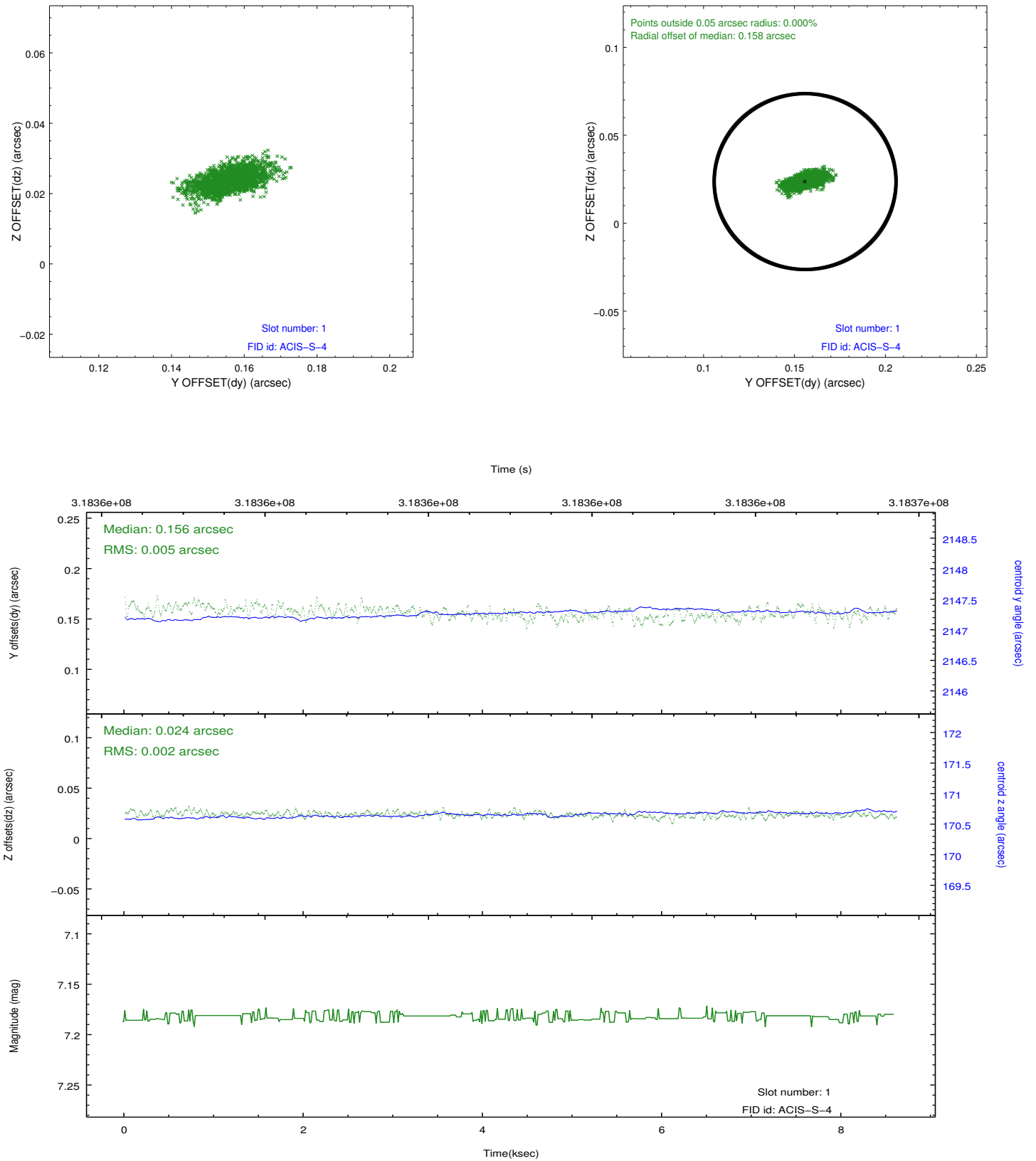


2.5 FID Slots

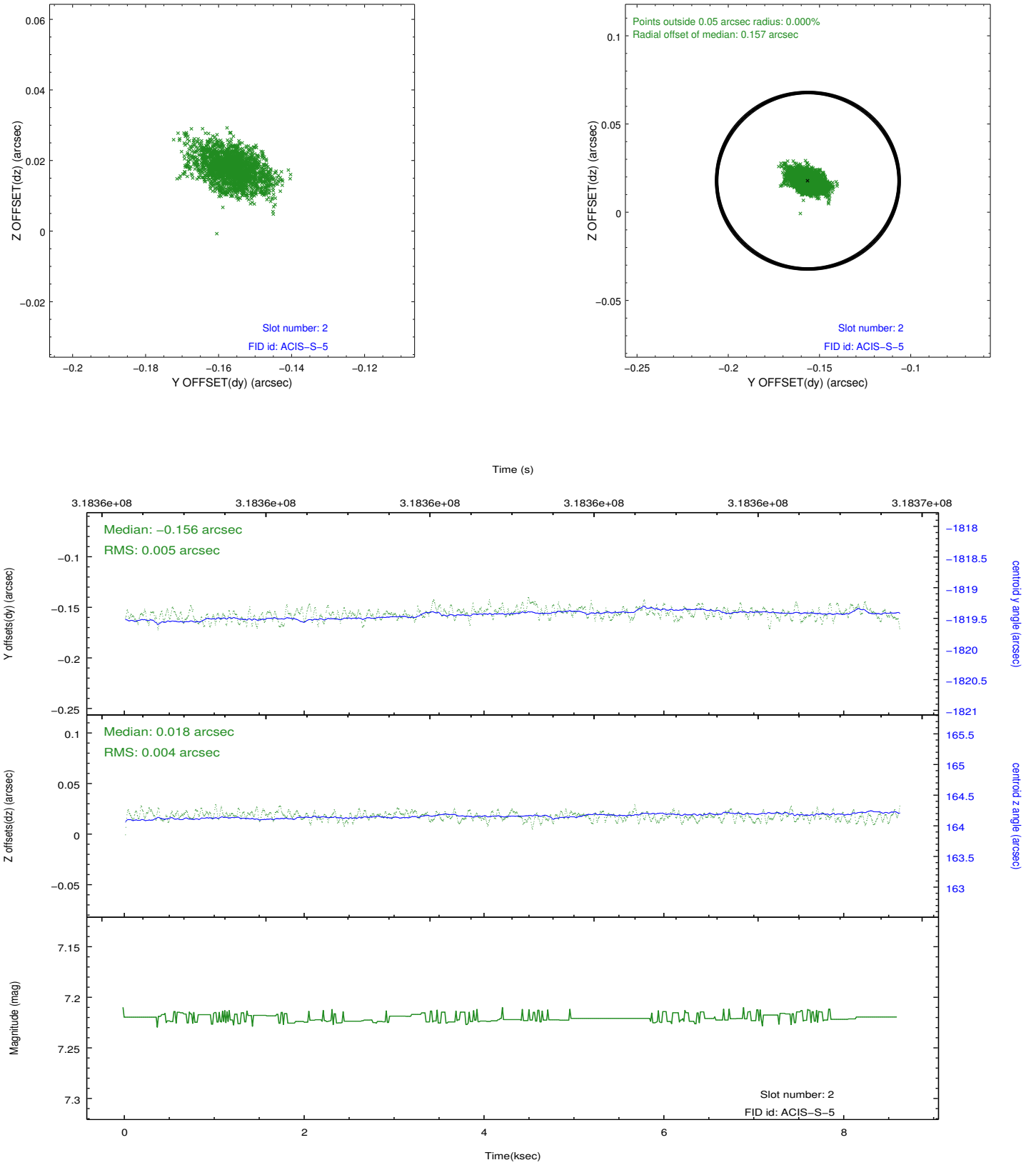
2.5.1 Slot 0



2.5.2 Slot 1



2.5.3 Slot 2



A Summary

A.1 Status

V&V Scientist	Beth Sundheim
V&V Date (YYYY-MM-DD)	2012.05.10
V&V Edition	1
V&V Disposition and Status	OK
V&V Charge Time	8.03520006

A.2 Comments