

V&V Reference Report

L2 ASCDS Version : 8.4.4

Observation 9272 - L2 Version 2
Chandra X-Ray Center

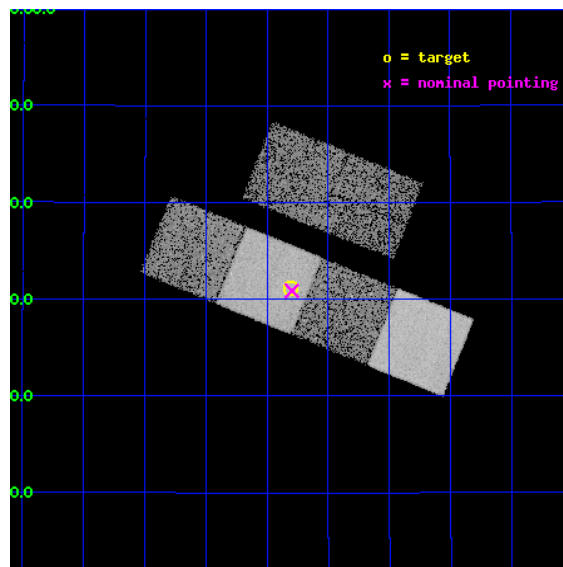
L2 Processing Date : May 11 2012

Contents

1	Front	2
2	OBI	3
2.1	OBI	3
2.1.1	Images	3
2.1.2	Bias	3
2.1.3	Parameters	4
2.1.4	Events	4
2.2	Compared Parameters	5
2.3	Aspect	6
2.4	Star Slots	9
2.4.1	Slot 3	9
2.4.2	Slot 4	10
2.4.3	Slot 5	11
2.4.4	Slot 6	12
2.4.5	Slot 7	13
2.5	FID Slots	14
2.5.1	Slot 0	14
2.5.2	Slot 1	15
2.5.3	Slot 2	16
A	Summary	17
A.1	Status	17
A.2	Comments	17

1 Front

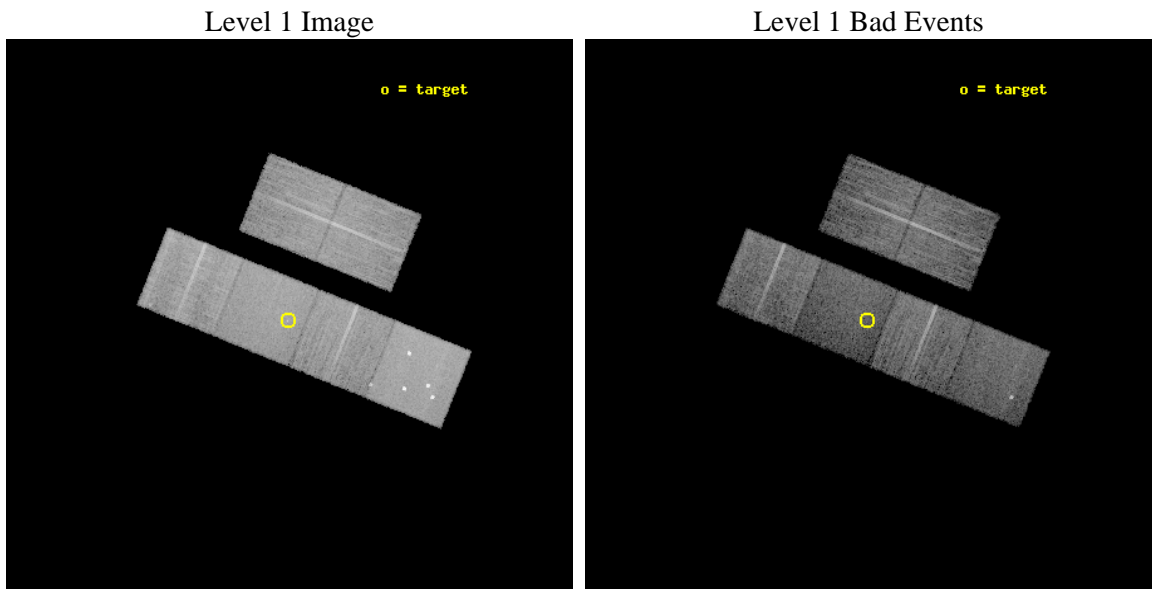
seq_num	701713	Sequence number
obs_id	9272	Observation id
title	A Chandra Survey of Nearby X-shaped Radio Galaxies	Proposal title
observer	Prof Christopher Reynolds	Principal investigator
object	J1043+3131	Source name
dtcycle	0	
cycle	P	events from which exps? Prim/Second/Both
ra_targ	160.8275	Observer's specified target RA [deg]
dec_targ	31.518361	Observer's specified target Dec [deg]
ra_nom	160.82413148463	Nominal RA [deg]
dec_nom	31.514463517821	Nominal Dec [deg]
roll_nom	201.916978872	Nominal Roll [deg]
revision	2	Processing version of data
ontime	10041.218591273	Sum of GTIs [s]
livetime	9914.0706353742	Livetime [s]
ontime2	10041.259631276	Sum of GTIs [s]
ontime3	10041.095471263	Sum of GTIs [s]
ontime5	10041.17755127	Sum of GTIs [s]
ontime6	10041.136511266	Sum of GTIs [s]
ontime7	10041.218591273	Sum of GTIs [s]
ontime8	10041.05443126	Sum of GTIs [s]
l2events	119711	Number of level 2 events



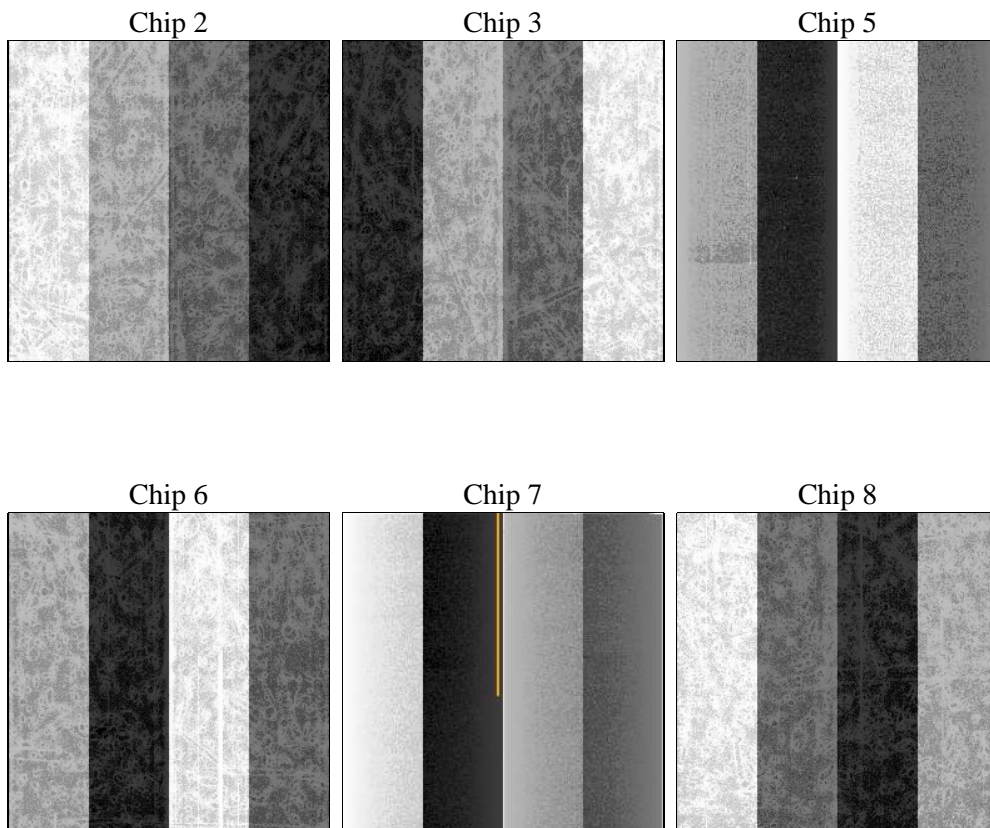
2 OBI

2.1 OBI

2.1.1 Images



2.1.2 Bias



2.1.3 Parameters

obi_num	0	Obi number	sched_exp_time	10000.000000	[s] Scheduled observation exposure time
ascdsver	8.4.4	Processing system revision	ontime	10041.218591273	Sum of GTIs [s]
caldsver	4.4.9	 	ontime2	10041.259631276	Sum of GTIs [s]
date	2012-05-11T12:49:55	Date and time of file creation	ontime3	10041.095471263	Sum of GTIs [s]
revision	2	Processing version of data	ontime5	10041.17755127	Sum of GTIs [s]
			ontime6	10041.136511266	Sum of GTIs [s]
			ontime7	10041.218591273	Sum of GTIs [s]
			ontime8	10041.05443126	Sum of GTIs [s]
			l1events	543201	Number of level 1 events

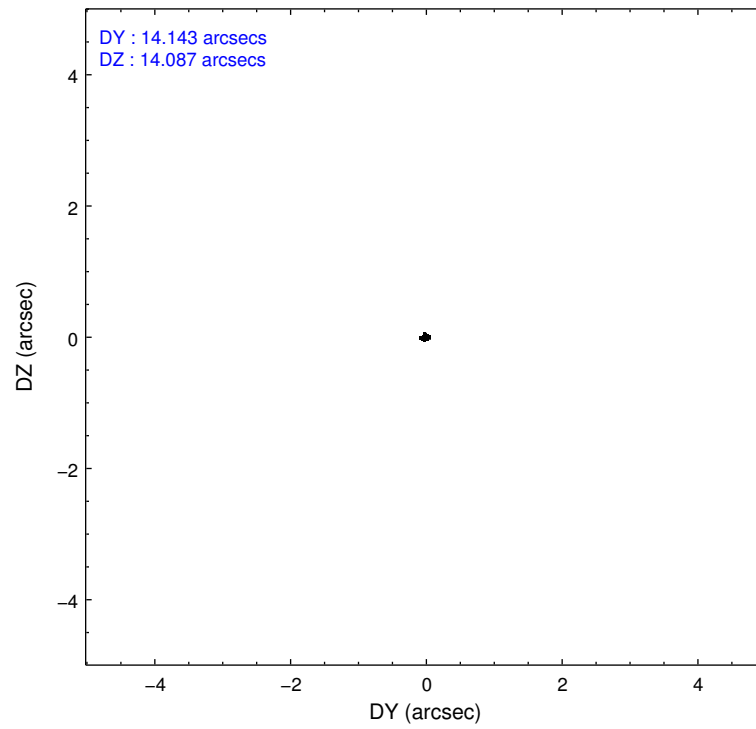
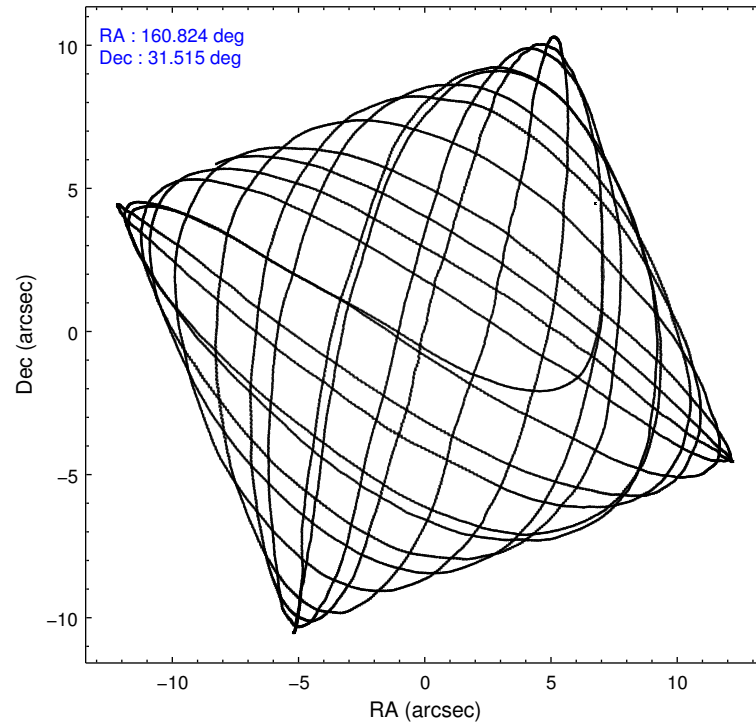
2.1.4 Events

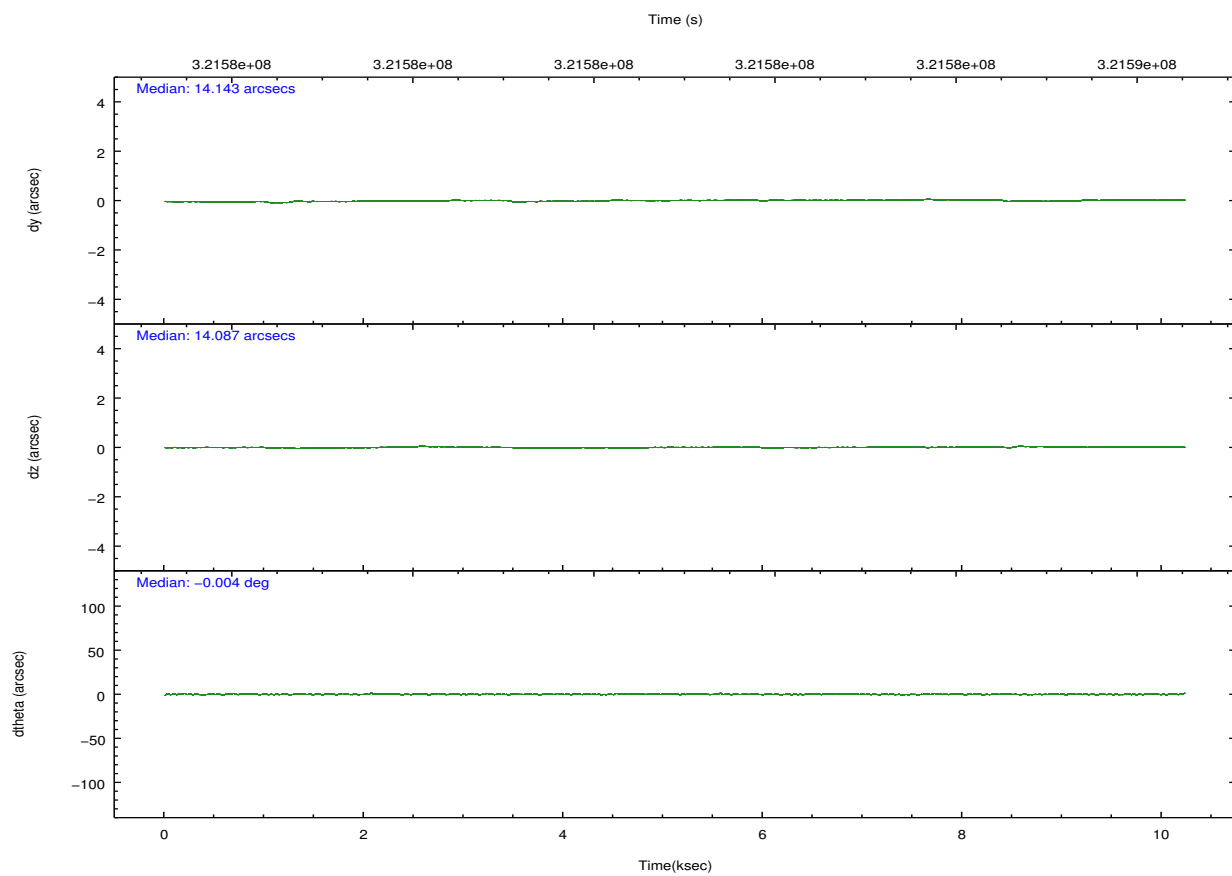
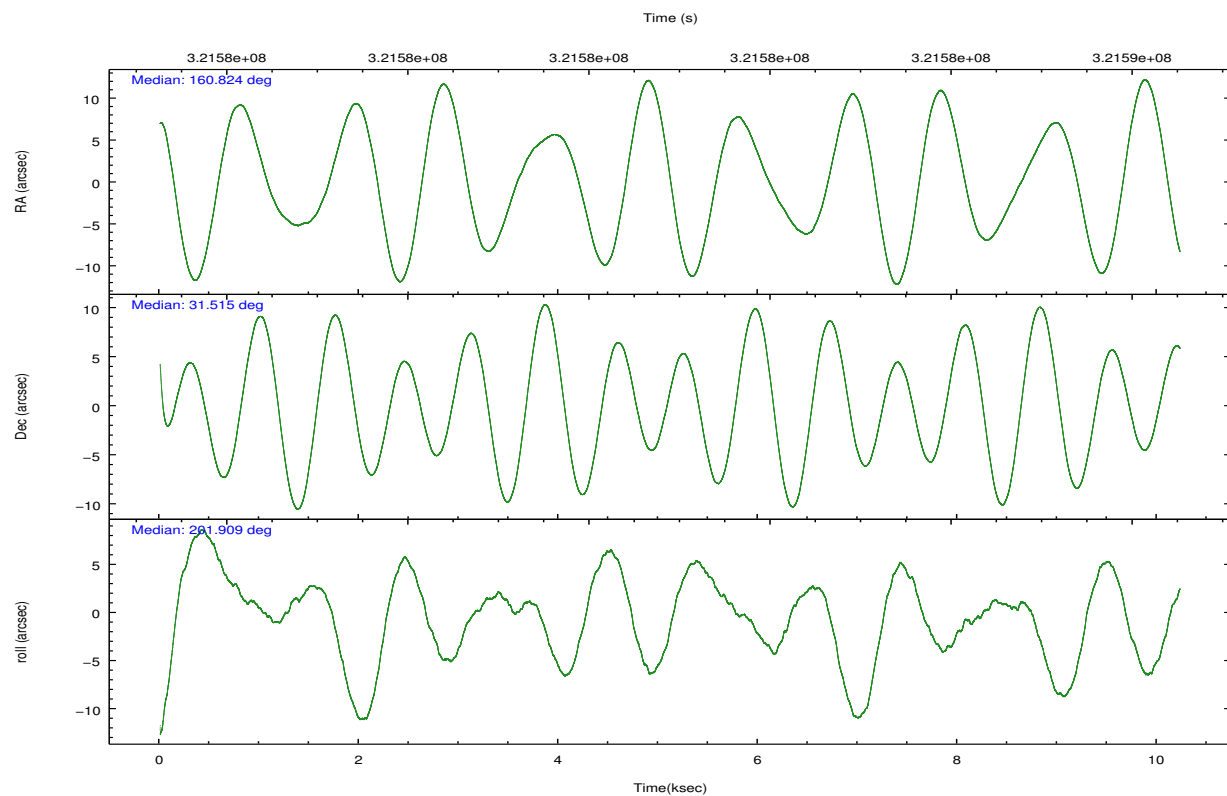
	ccd 2	ccd 3	ccd 5	ccd 6	ccd 7	ccd 8		ccd 2	ccd 3	ccd 5	ccd 6	ccd 7	ccd 8
level 1 events	79915	76409	118656	80157	90117	97947	grade 0 events	2715	2693	12676	3085	4300	7332
rejected events	72323	69035	56207	71618	48513	74110		3%	3%	10%	3%	4%	7%
rejected %	90%	90%	47%	89%	53%	75%	grade 1 events	52	44	304	39	116	83
								0%	0%	0%	0%	0%	0%
							grade 2 events	1878	1585	17004	1902	8576	5423
								2%	2%	14%	2%	9%	5%
							grade 3 events	831	830	2146	877	3726	2569
								1%	1%	1%	1%	4%	2%
							grade 4 events	773	818	2073	928	3744	2410
								0%	1%	1%	1%	4%	2%
							grade 5 events	2757	3029	8506	3213	9231	4671
								3%	3%	7%	4%	10%	4%
							grade 6 events	1401	1450	28579	1754	21286	6111
								1%	1%	24%	2%	23%	6%
							grade 7 events	69508	65960	47368	68359	39138	69348
								86%	86%	39%	85%	43%	70%

2.2 Compared Parameters

Parameter	Planned	Actual	Parameter	Planned	Actual
Instrument	ACIS	ACIS	Obspar format version number	7	7
Detector	ACIS-235678	ACIS-235678	Obspar file type	PREDICTED	ACTUAL
Grating	NONE	NONE	Obspar update status	NONE	UPDATED
Data mode	FAINT	FAINT	CCD I0 on	N	N
Observation mode	POINTING	POINTING	CCD I1 on	N	N
[deg] Pointing RA	160.843567	160.8241314846314	CCD I2 on	O2	Y
[deg] Pointing Dec	31.536204	31.51446351782117	CCD I3 on	O4	Y
[deg] Pointing Roll	201.750186	201.9169788720002	CCD S0 on	N	N
[mm] SIM focus pos	-0.684267	-0.6828225247311905	CCD S1 on	O1	Y
[mm] SIM defocus	0	0.001444936568705701	CCD S2 on	O5	Y
[mm] SIM translation stage pos	-190.132523	-190.1400660498719	CCD S3 on	Y	Y
[mm] SIM translation stage offset	0	0.00754346686406393	CCD S4 on	O3	Y
[s] Observation start time (MET)	321576014.184000	321574985.78351	CCD S5 on	N	N
Observation start date	2008-03-10T22:39:09	2008-03-10T22:23:05	Number of optional ACIS chips dropped	0	0
[s] Observation end time (MET)	321586014.184000	321587398.53411	On-chip summing requested	N	N
Observation end date	2008-03-11T01:25:49	2008-03-11T01:49:58	Subarray requested	NONE	NONE
Read mode	TIMED	TIMED	Alternating exposures requested	N	N
			[s] Primary exposure time	0.000000	3.2

2.3 Aspect



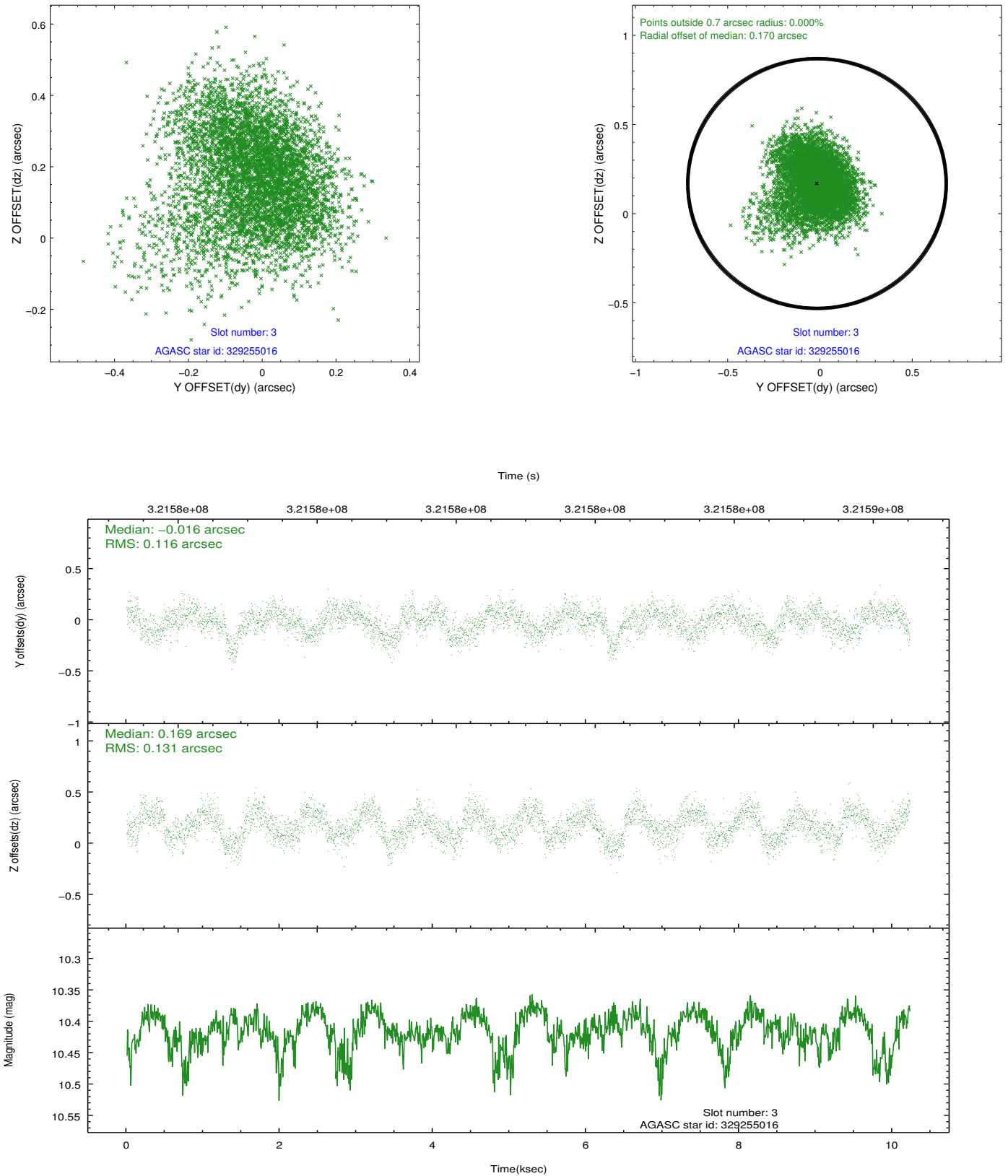


Slot Statistics

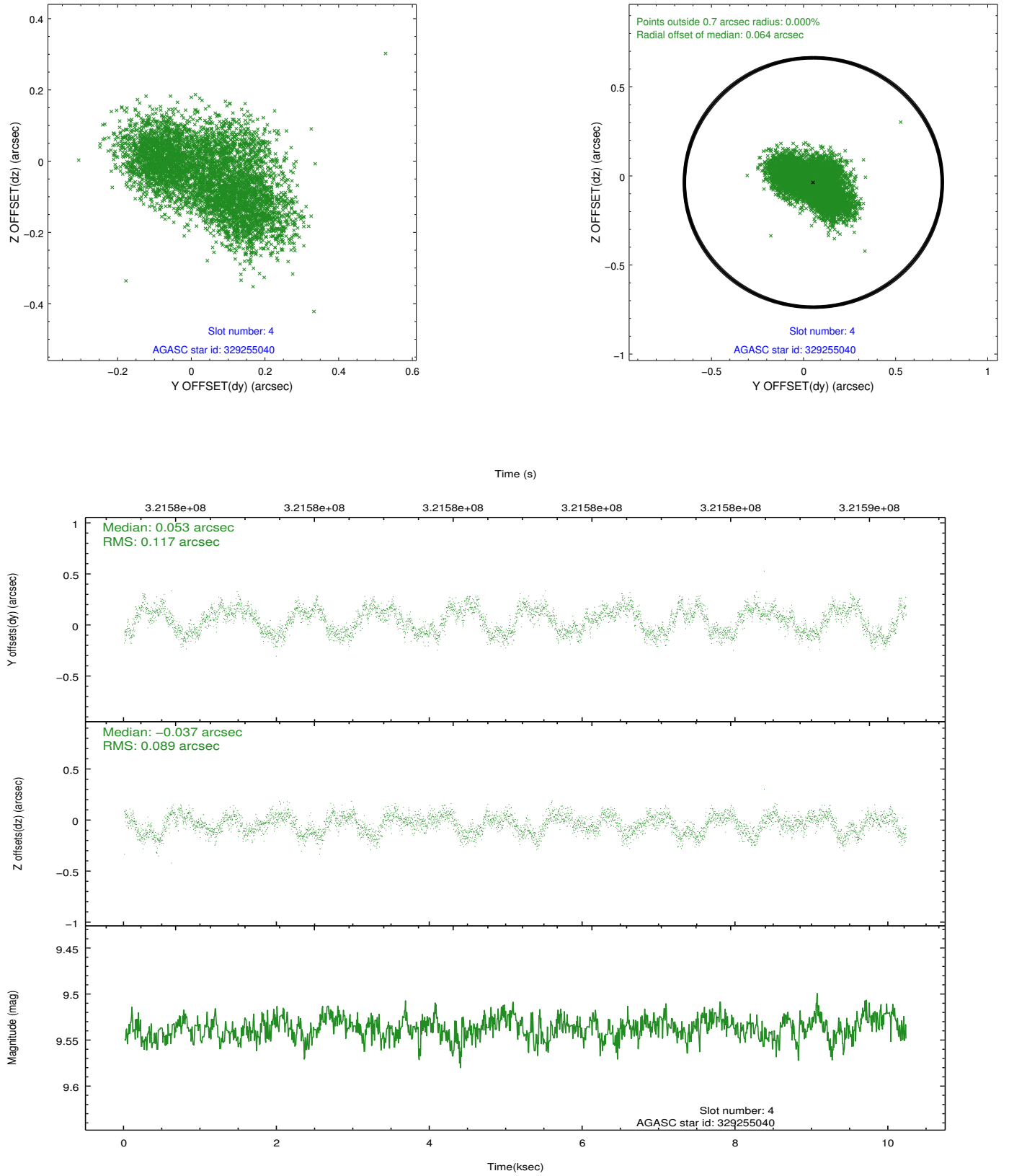
slot	status	id	mag	n_pts	med_dy	med_dz	dr1	dr2	ra	dec	mean_y	mean_z
0	FID	ACIS-S-2	7.10	2494	-0.072	-0.057	0.007	0.011	0.000000	0.000000	-767.14	-1735.50
1	FID	ACIS-S-4	7.19	2494	0.201	0.050	0.006	0.010	0.000000	0.000000	2146.16	172.56
2	FID	ACIS-S-5	7.22	2493	-0.160	0.016	0.006	0.011	0.000000	0.000000	-1819.42	166.77
3	GUIDE	329255016	10.41	4980	-0.016	0.169	0.186	0.302	161.099967	31.243013	-342.11	1272.41
4	GUIDE	329255040	9.54	4982	0.053	-0.037	0.161	0.240	161.666274	31.228189	-1944.17	1961.47
5	GUIDE	329255136	10.08	4980	0.075	-0.005	0.151	0.245	160.224446	31.925036	1236.68	-2005.20
6	GUIDE	329255520	9.88	4985	-0.002	-0.116	0.208	0.321	160.689200	32.068205	-271.57	-1953.87
7	GUIDE	329254408	9.11	4973	-0.093	0.001	0.111	0.174	161.370832	32.160852	-2326.79	-1497.11

2.4 Star Slots

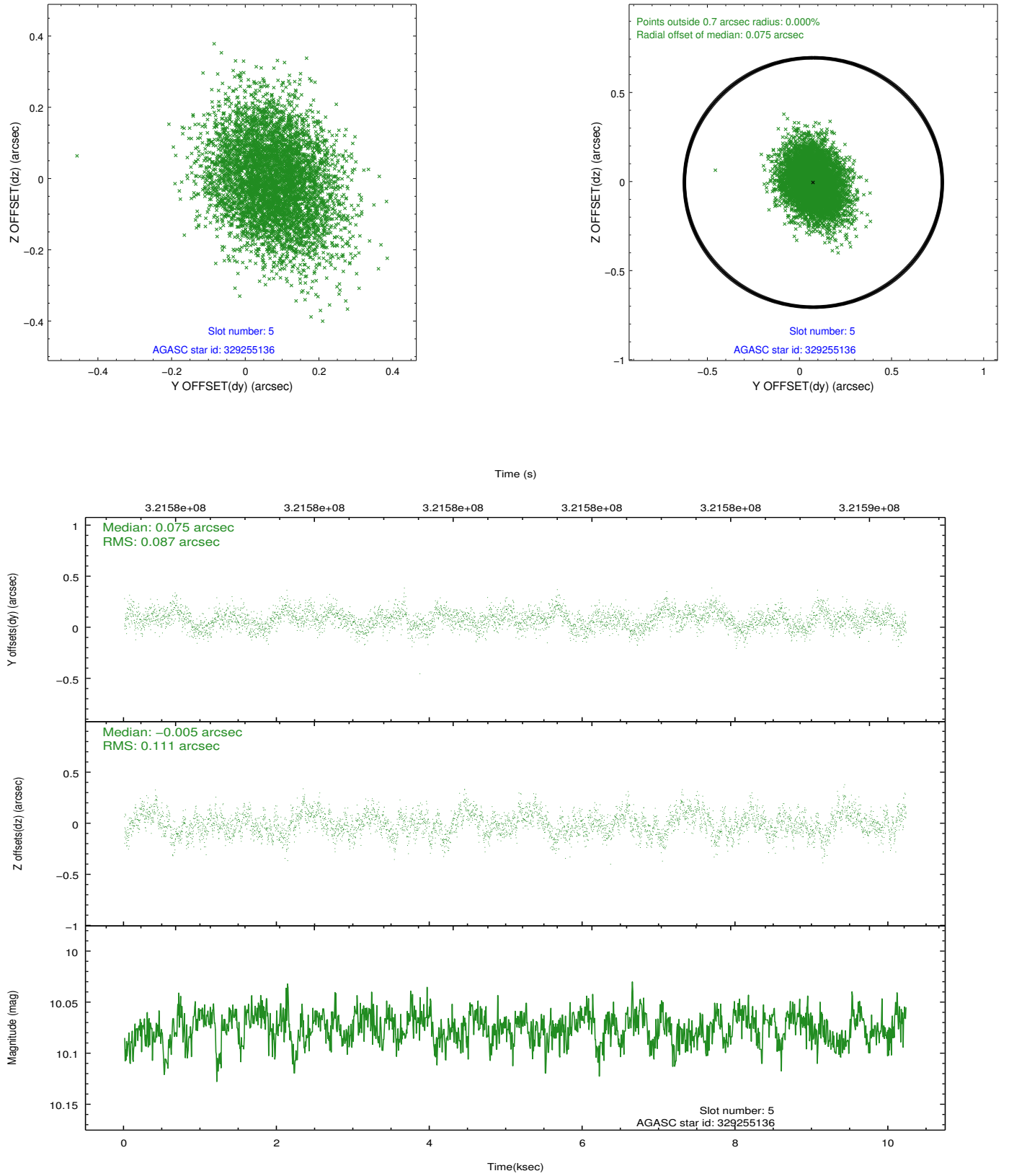
2.4.1 Slot 3



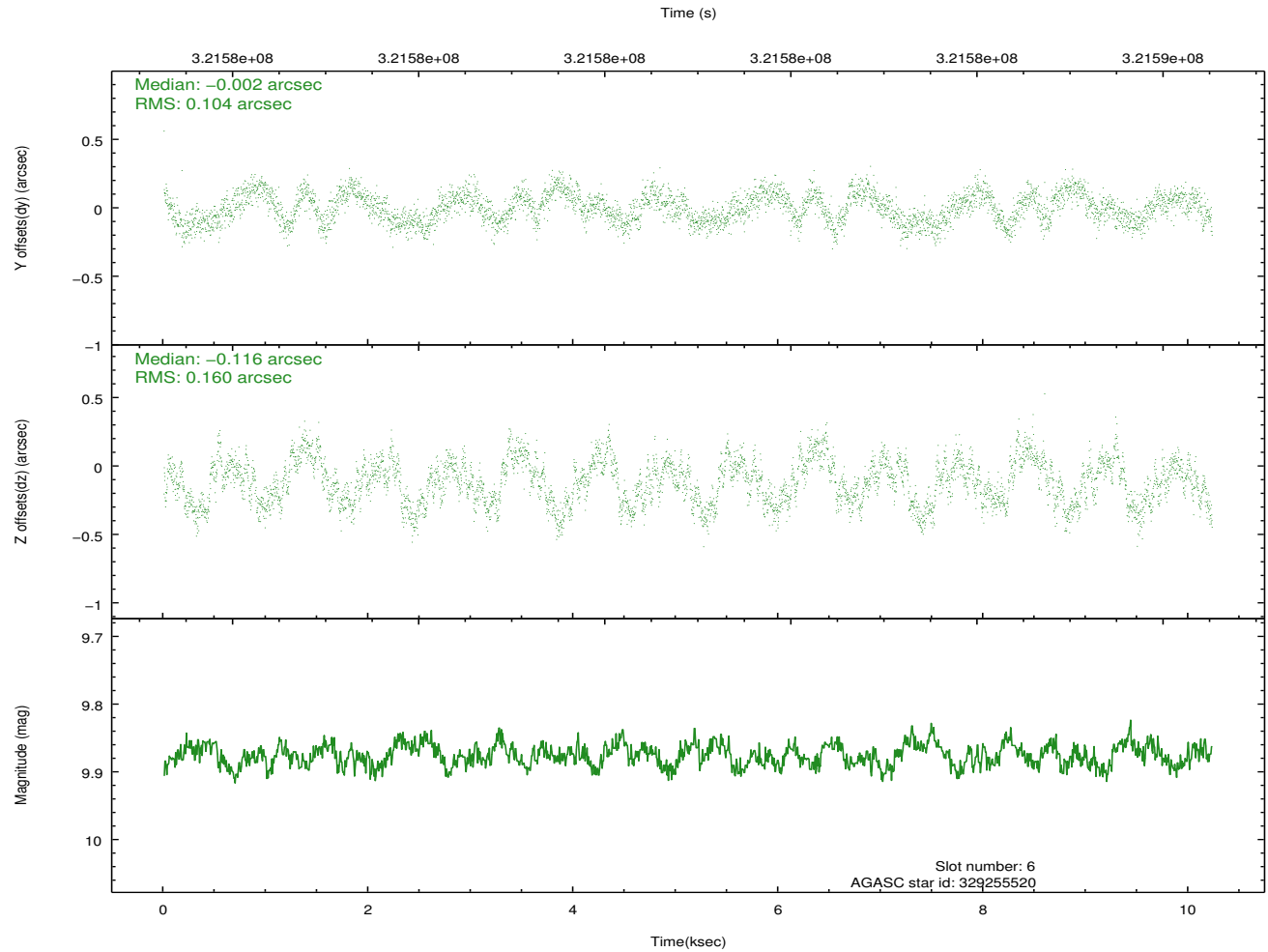
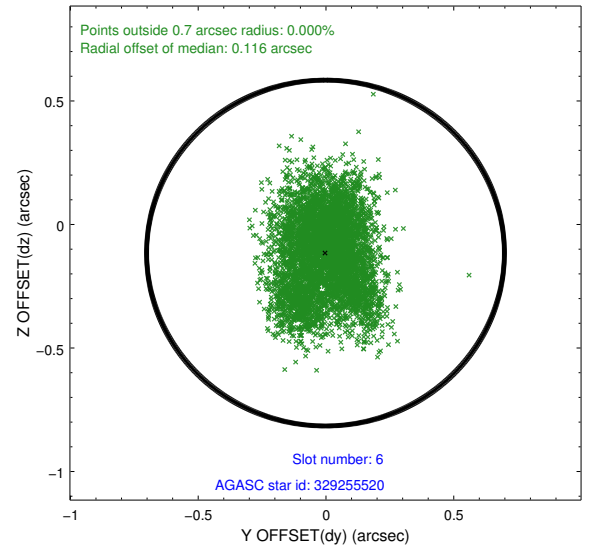
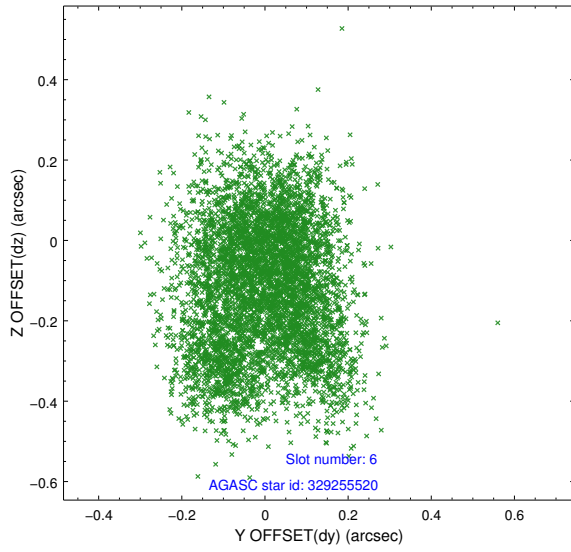
2.4.2 Slot 4



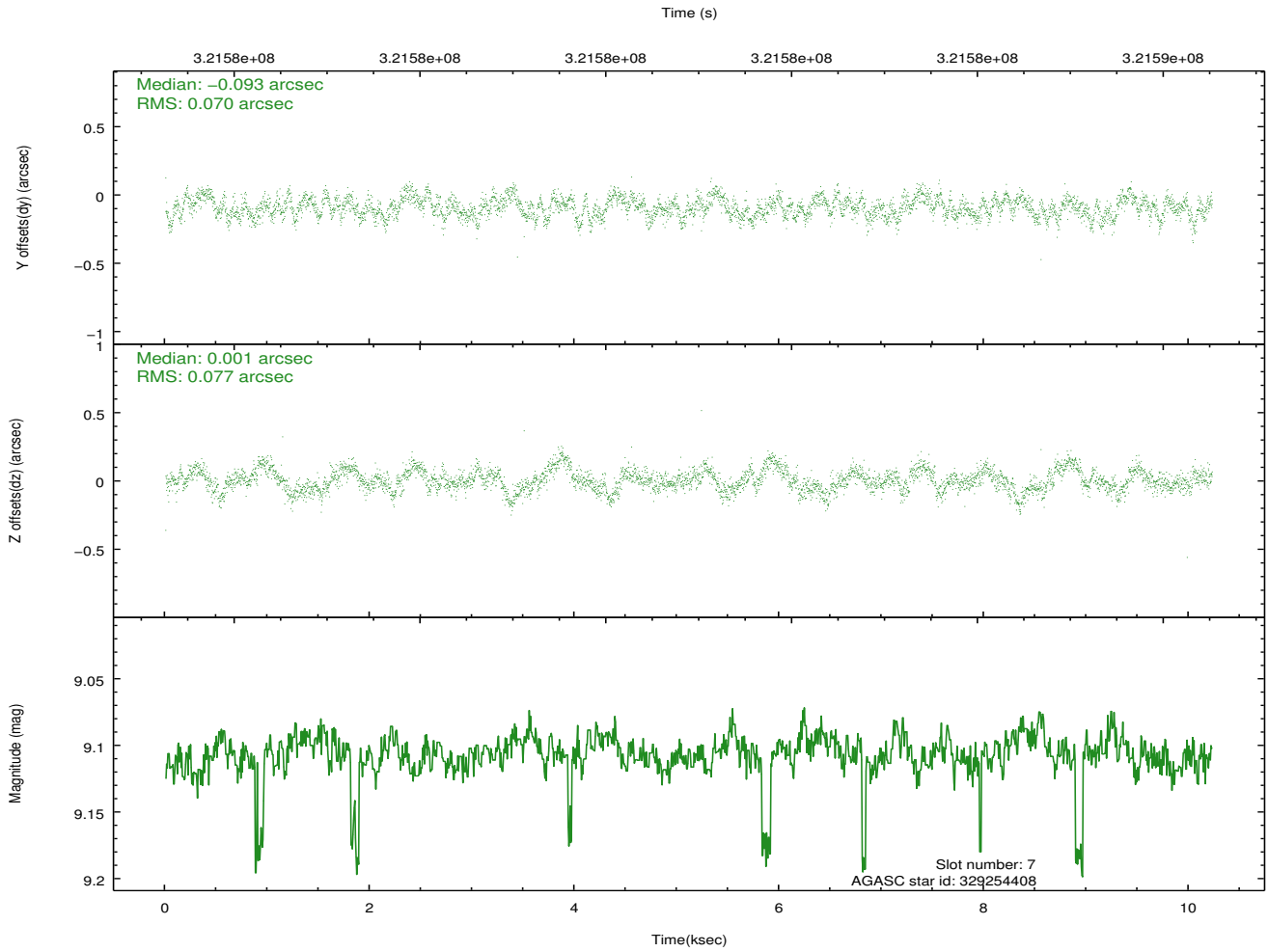
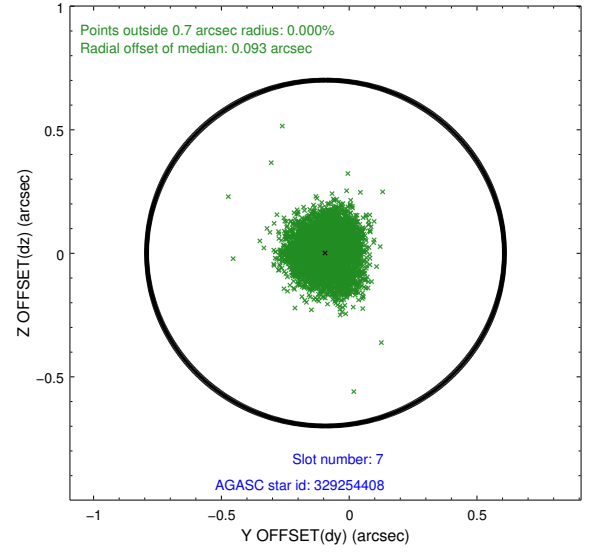
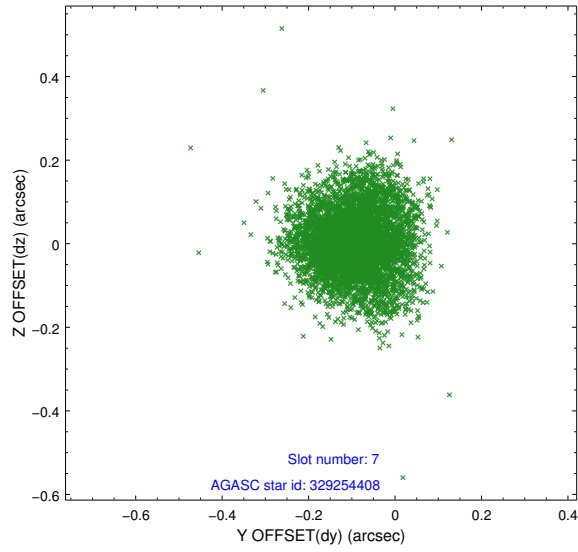
2.4.3 Slot 5



2.4.4 Slot 6

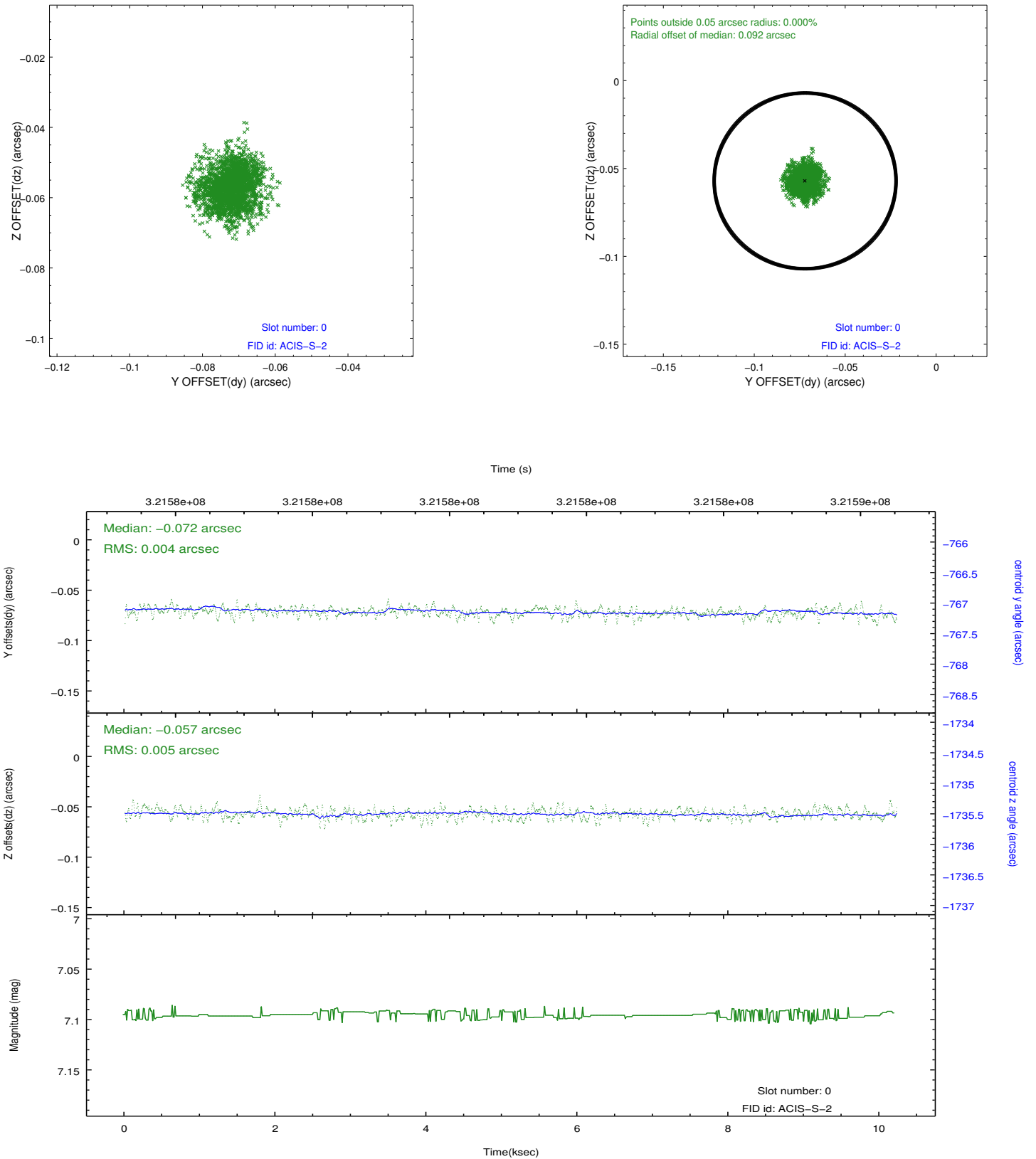


2.4.5 Slot 7

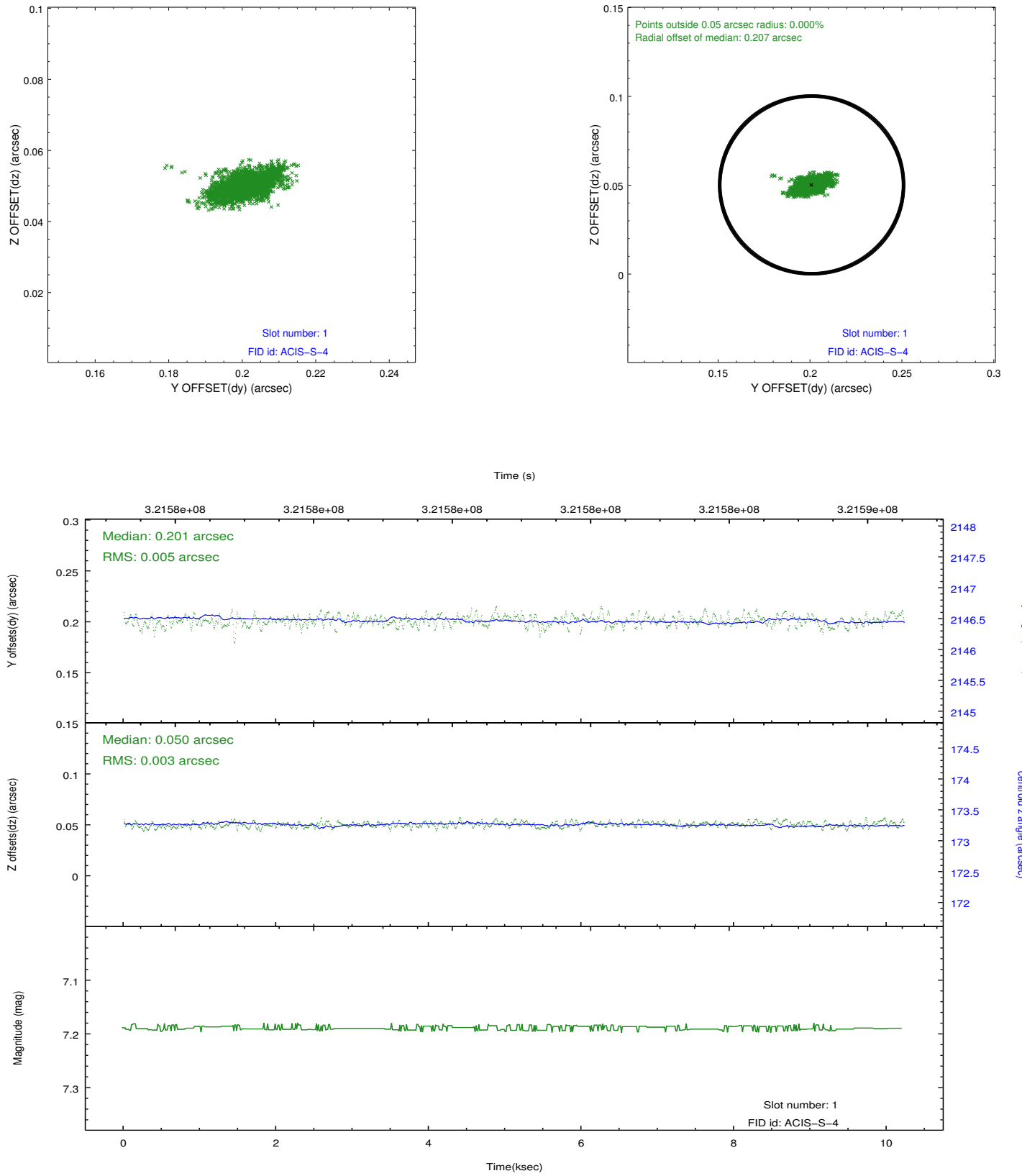


2.5 FID Slots

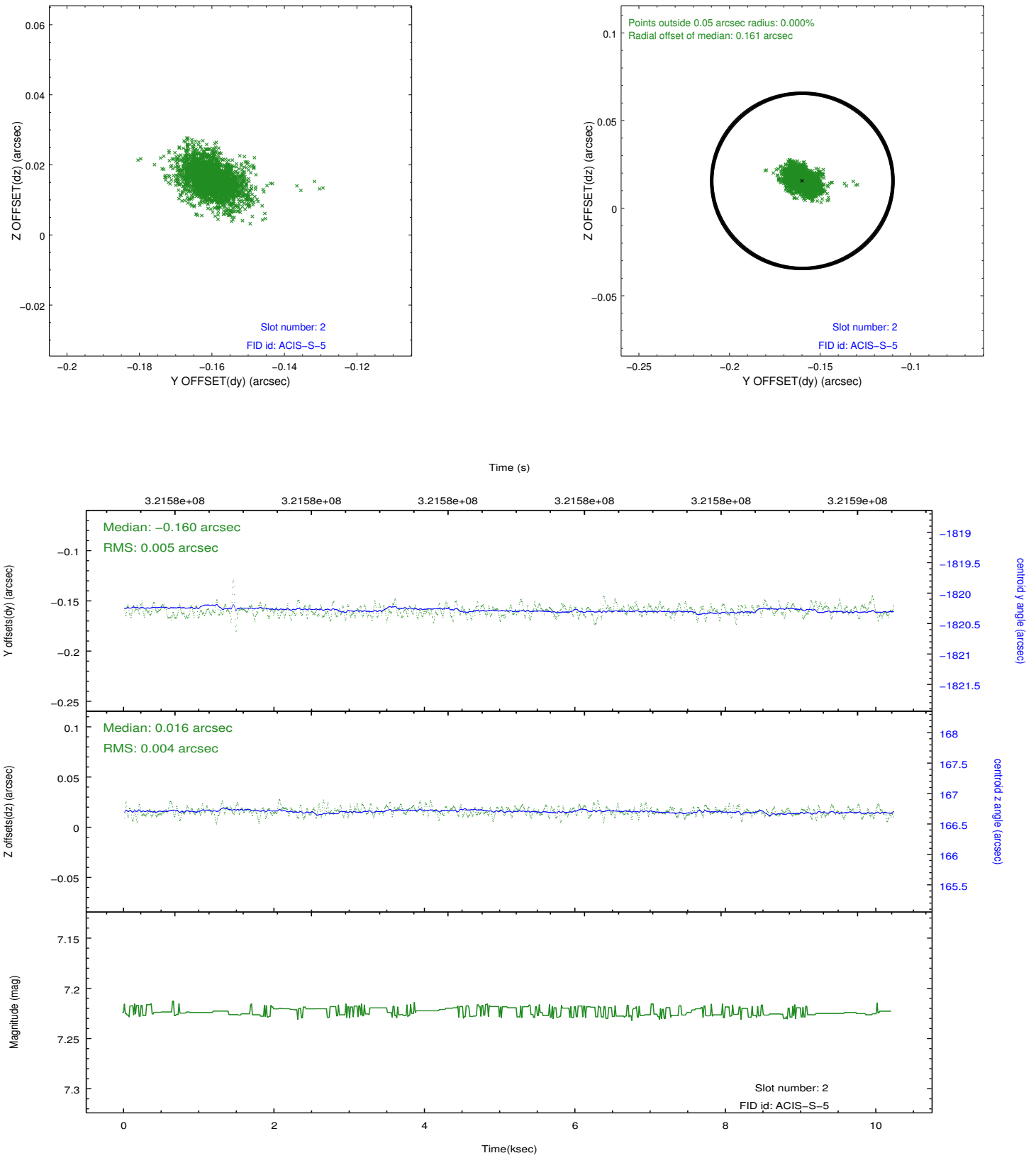
2.5.1 Slot 0



2.5.2 Slot 1



2.5.3 Slot 2



A Summary

A.1 Status

V&V Scientist	Jen Lauer
V&V Date (YYYY-MM-DD)	2012.05.14
V&V Edition	1
V&V Disposition and Status	OK
V&V Charge Time	10.0415999

A.2 Comments