

V&V Reference Report

L2 ASCDS Version : 8.4.4

Observation 9268 - L2 Version 2
Chandra X-Ray Center

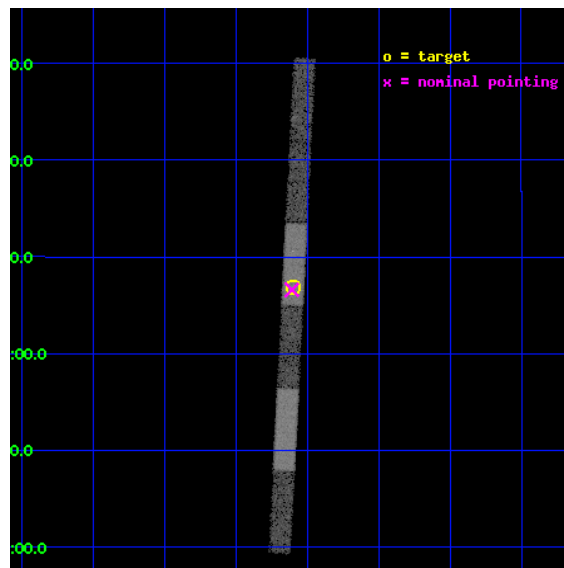
L2 Processing Date : May 10 2012

Contents

1	Front	2
2	OBI	3
2.1	OBI	3
2.1.1	Images	3
2.1.2	Bias	3
2.1.3	Parameters	4
2.1.4	Events	4
2.2	Compared Parameters	5
2.3	Aspect	6
2.4	Star Slots	9
2.4.1	Slot 3	9
2.4.2	Slot 4	10
2.4.3	Slot 5	11
2.4.4	Slot 6	12
2.4.5	Slot 7	13
2.5	FID Slots	14
2.5.1	Slot 0	14
2.5.2	Slot 1	15
2.5.3	Slot 2	16
A	Summary	17
A.1	Status	17
A.2	Comments	17

1 Front

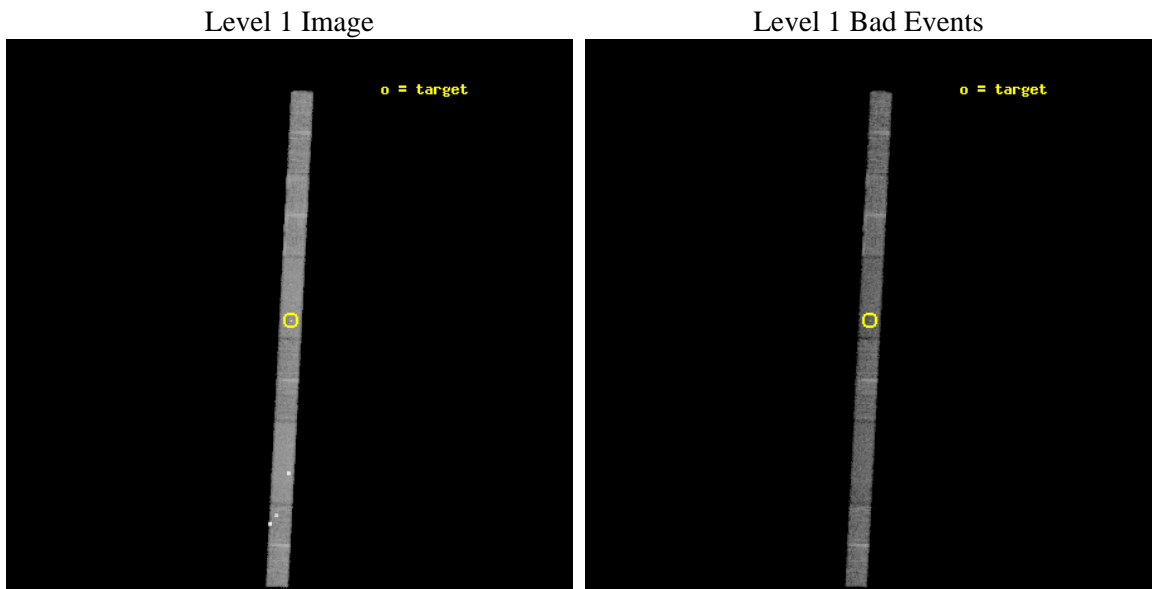
seq_num	701709	Sequence number
obs_id	9268	Observation id
title	Short-time monitoring of extreme spectral variations in Seyfert 2s	
observer	Dr Guido Risaliti	Principal investigator
object	UGC 4203	Source name
dtcycle	0	
cycle	P	events from which exps? Prim/Second/Both
ra_targ	121.024167	Observer's specified target RA [deg]
dec_targ	5.113889	Observer's specified target Dec [deg]
ra_nom	121.02690531763	Nominal RA [deg]
dec_nom	5.1099299020922	Nominal Dec [deg]
roll_nom	272.91750160453	Nominal Roll [deg]
revision	2	Processing version of data
ontime	10151.900220037	Sum of GTIs [s]
livetime	9786.7649180047	Livetime [s]
ontime4	10146.19501996	Sum of GTIs [s]
ontime5	10151.900220037	Sum of GTIs [s]
ontime6	10151.900220037	Sum of GTIs [s]
ontime7	10151.900220037	Sum of GTIs [s]
ontime8	10151.900220037	Sum of GTIs [s]
ontime9	10151.900220037	Sum of GTIs [s]
l2events	46367	Number of level 2 events



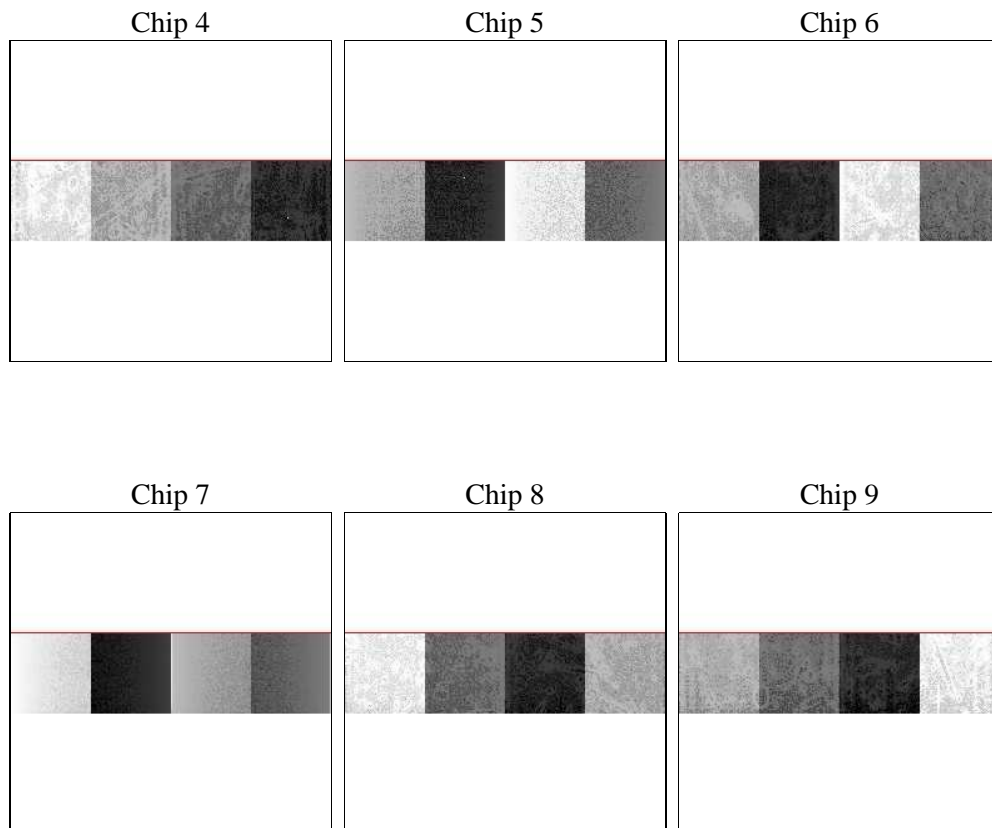
2 OBI

2.1 OBI

2.1.1 Images



2.1.2 Bias



2.1.3 Parameters

obi_num	1	Obi number	sched_exp_time	10000.000000	[s] Scheduled observation exposure time
ascdsver	8.4.4	Processing system revision	ontime	10151.900220037	Sum of GTIs [s]
caldsver	4.4.9	 	ontime4	10146.19501996	Sum of GTIs [s]
date	2012-05-10T21:58:02	Date and time of file creation	ontime5	10151.900220037	Sum of GTIs [s]
revision	2	Processing version of data	ontime6	10151.900220037	Sum of GTIs [s]
			ontime7	10151.900220037	Sum of GTIs [s]
			ontime8	10151.900220037	Sum of GTIs [s]
			ontime9	10151.900220037	Sum of GTIs [s]
			l1events	235138	Number of level 1 events

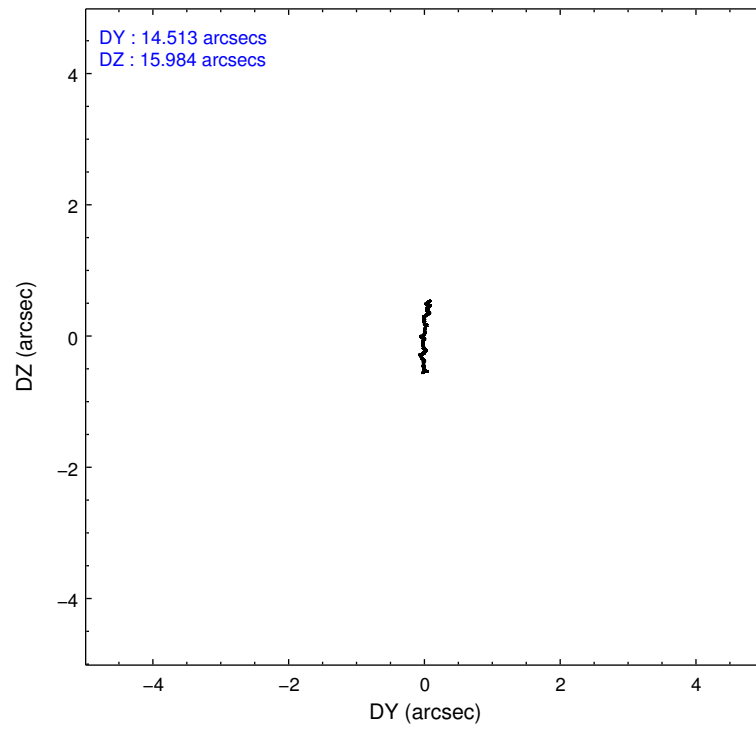
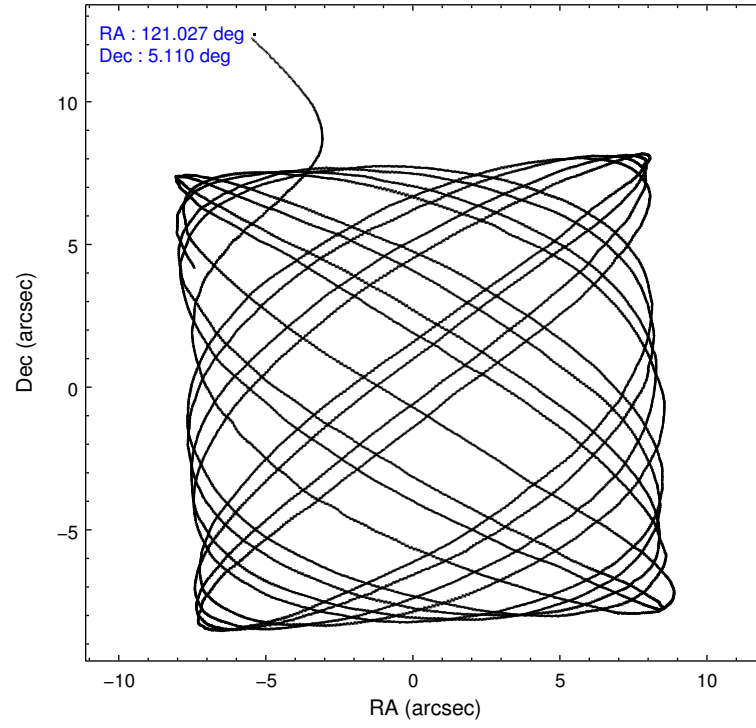
2.1.4 Events

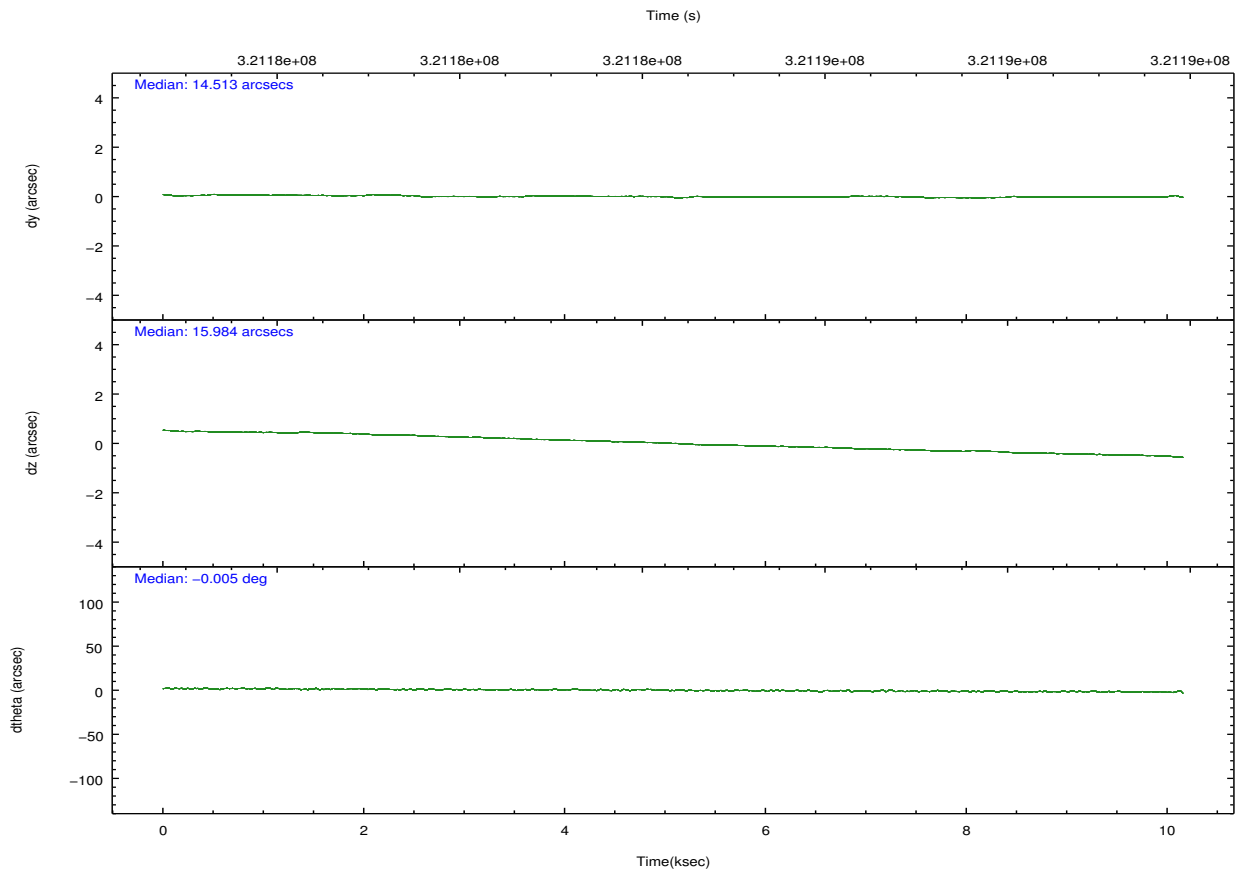
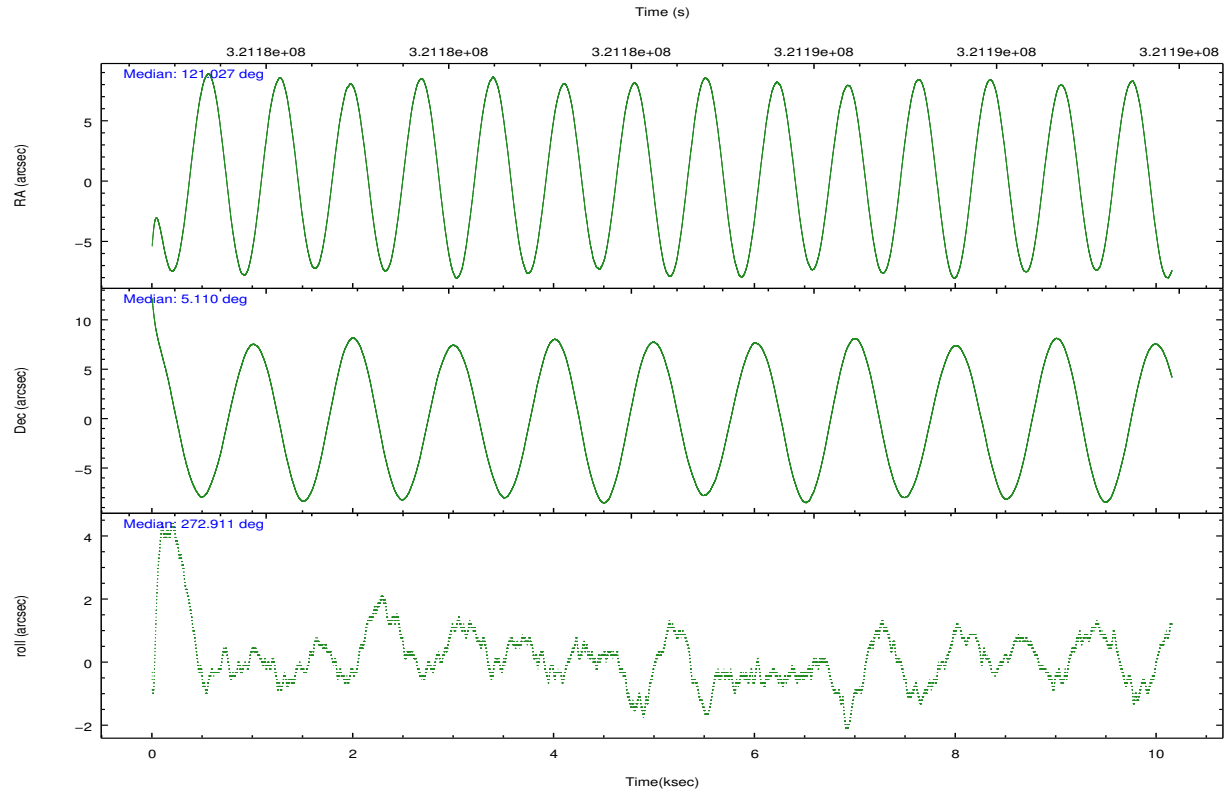
	ccd 4	ccd 5	ccd 6	ccd 7	ccd 8	ccd 9		ccd 4	ccd 5	ccd 6	ccd 7	ccd 8	ccd 9
level 1 events	44967	48082	30893	40399	40202	30595	grade 0 events	4503	7730	1354	2084	2333	1511
rejected events	31701	24221	27338	23120	32324	26995		10%	16%	4%	5%	5%	4%
rejected %	70%	50%	88%	57%	80%	88%	grade 1 events	38	72	13	59	19	17
								0%	0%	0%	0%	0%	0%
							grade 2 events	782	5862	710	3884	1816	712
								1%	12%	2%	9%	4%	2%
							grade 3 events	550	1100	507	1903	934	503
								1%	2%	1%	4%	2%	1%
							grade 4 events	490	1042	495	1870	856	483
								1%	2%	1%	4%	2%	1%
							grade 5 events	1267	3269	1229	3787	1682	1371
								2%	6%	3%	9%	4%	4%
							grade 6 events	7834	9845	744	8697	2463	653
								17%	20%	2%	21%	6%	2%
							grade 7 events	29503	19162	25841	18115	30099	25345
								65%	39%	83%	44%	74%	82%

2.2 Compared Parameters

Parameter	Planned	Actual	Parameter	Planned	Actual
Instrument	ACIS	ACIS	Obspar format version number	7	7
Detector	ACIS-456789	ACIS-456789	Obspar file type	PREDICTED	ACTUAL
Grating	NONE	NONE	Obspar update status	NONE	UPDATED
Data mode	FAINT	FAINT	CCD I0 on	N	N
Observation mode	POINTING	POINTING	CCD I1 on	N	N
[deg] Pointing RA	121.011699	121.0269053176285	CCD I2 on	N	N
[deg] Pointing Dec	5.132646	5.109929902092199	CCD I3 on	N	N
[deg] Pointing Roll	272.762235	272.9175016045286	CCD S0 on	O1	Y
[mm] SIM focus pos	-0.684267	-0.6828225247311905	CCD S1 on	Y	Y
[mm] SIM defocus	0	0.001444936568705701	CCD S2 on	Y	Y
[mm] SIM translation stage pos	-190.132523	-190.1425803651734	CCD S3 on	Y	Y
[mm] SIM translation stage offset	0	0.01005778216563158	CCD S4 on	Y	Y
[s] Observation start time (MET)	321179421.184000	321178294.36424	CCD S5 on	O2	Y
Observation start date	2008-03-06T08:29:16	2008-03-06T08:11:34	Number of optional ACIS chips dropped	0	0
[s] Observation end time (MET)	321189421.184000	321190399.61482	On-chip summing requested	N	N
Observation end date	2008-03-06T11:15:56	2008-03-06T11:33:19	Subarray requested	CUSTOM	1/4
Read mode	TIMED	TIMED	Subarray start row	385	385
			Subarray row count	256	256
			Alternating exposures requested	N	N
			[s] Primary exposure time	0.000000	1.1

2.3 Aspect



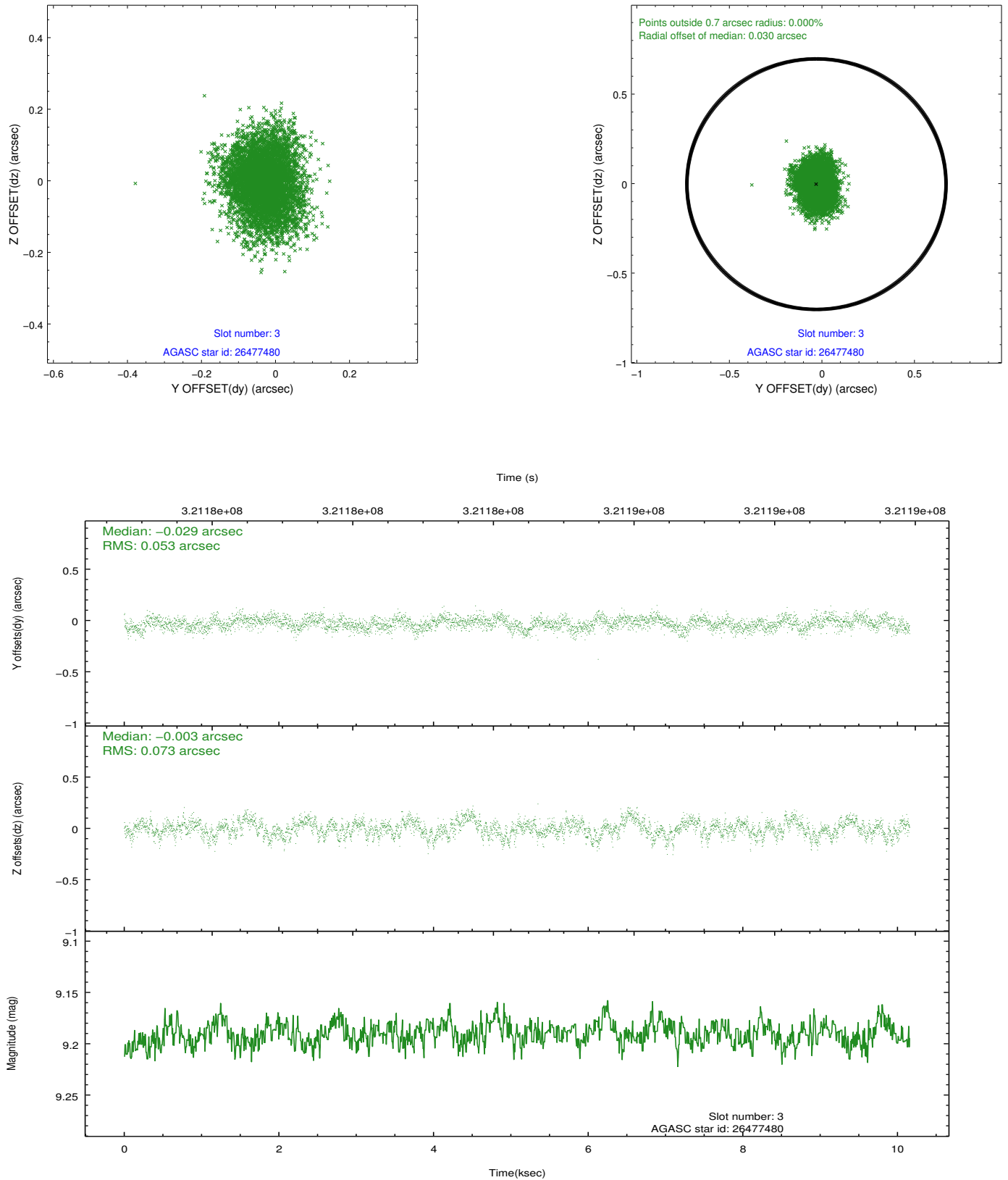


Slot Statistics

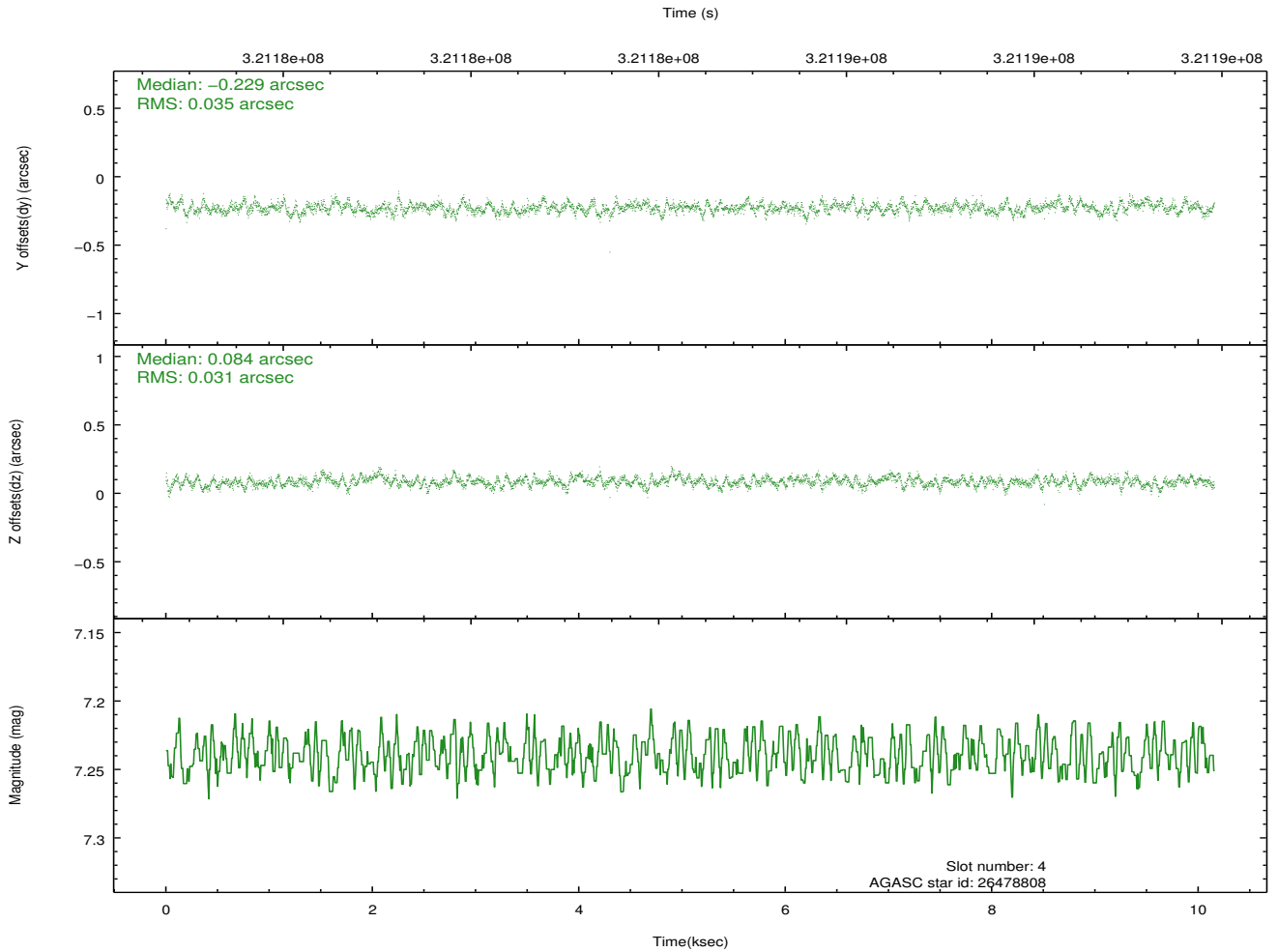
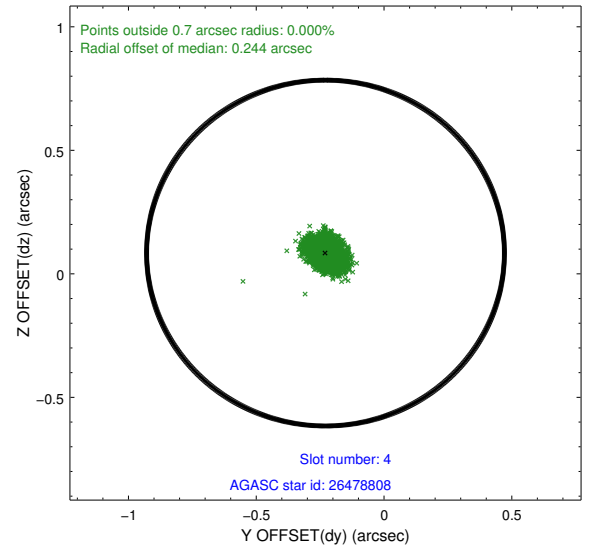
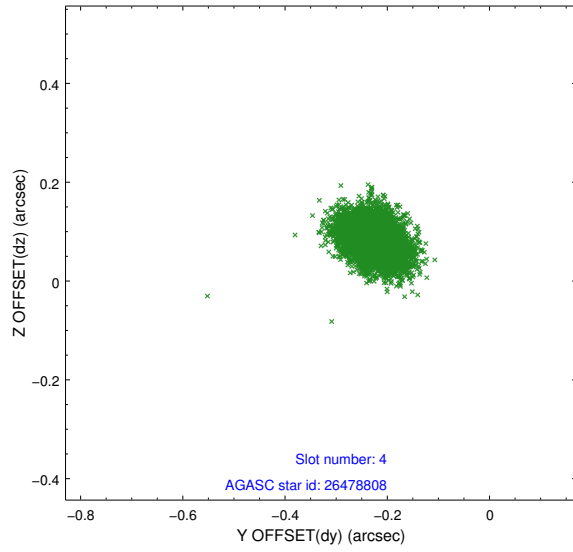
slot	status	id	mag	n_pts	med_dy	med_dz	dr1	dr2	ra	dec	mean_y	mean_z
0	FID	ACIS-S-1	7.18	2477	0.087	-0.097	0.016	0.026	0.000000	0.000000	928.64	-1733.07
1	FID	ACIS-S-5	7.23	2476	-0.161	0.043	0.010	0.016	0.000000	0.000000	-1820.31	164.09
2	FID	ACIS-S-6	7.32	2477	0.053	0.064	0.010	0.016	0.000000	0.000000	393.61	808.65
3	GUIDE	26477480	9.19	4949	-0.029	-0.003	0.095	0.157	120.719802	5.482207	-1307.17	-983.99
4	GUIDE	26478808	7.24	4955	-0.229	0.084	0.049	0.081	121.530150	5.559485	-1446.48	1929.69
5	GUIDE	26479112	8.92	4952	-0.110	0.152	0.091	0.150	121.440982	5.412421	-932.64	1586.11
6	GUIDE	26487192	6.91	4893	0.097	-0.172	0.057	0.097	120.481632	4.541449	2034.08	-2001.99
7	GUIDE	26487648	9.32	4942	0.271	-0.066	0.091	0.150	121.080640	4.583420	1987.86	151.95

2.4 Star Slots

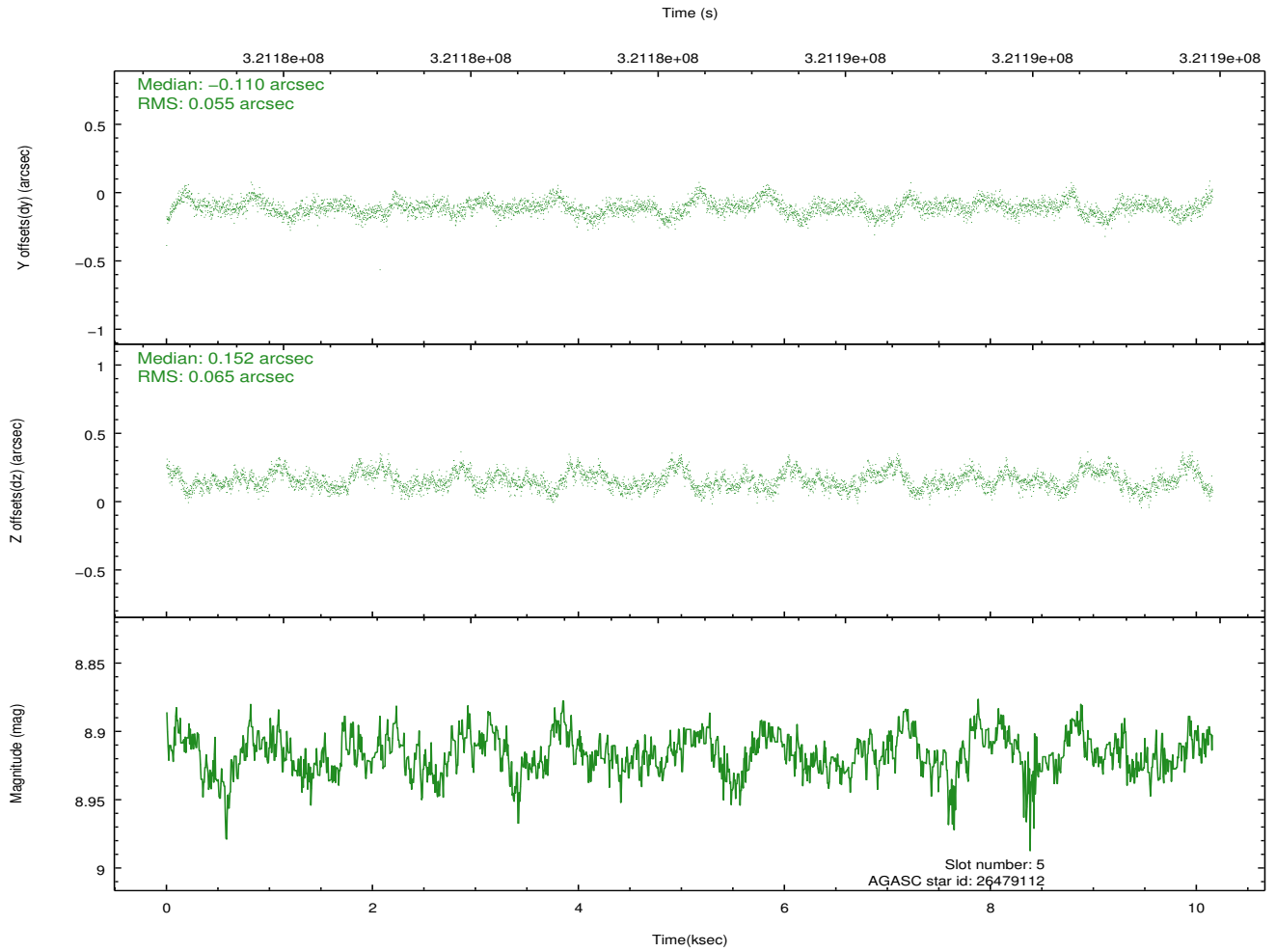
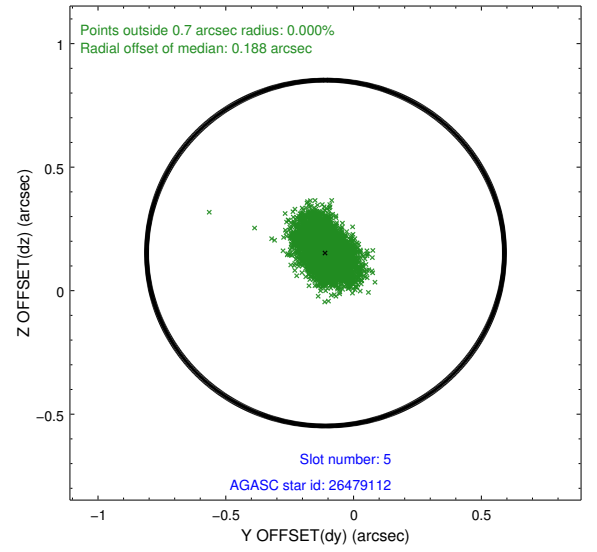
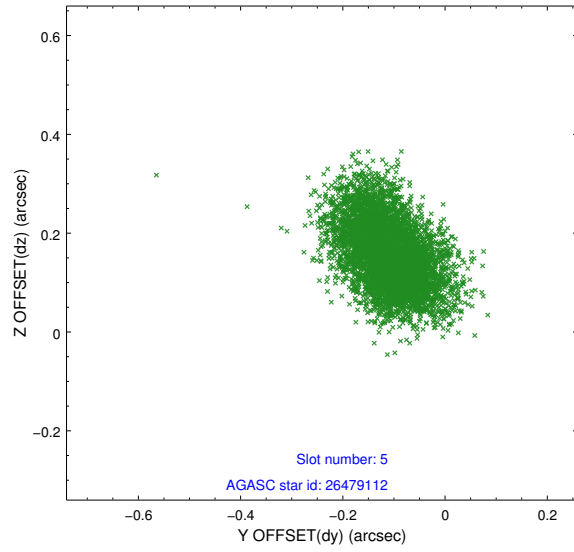
2.4.1 Slot 3



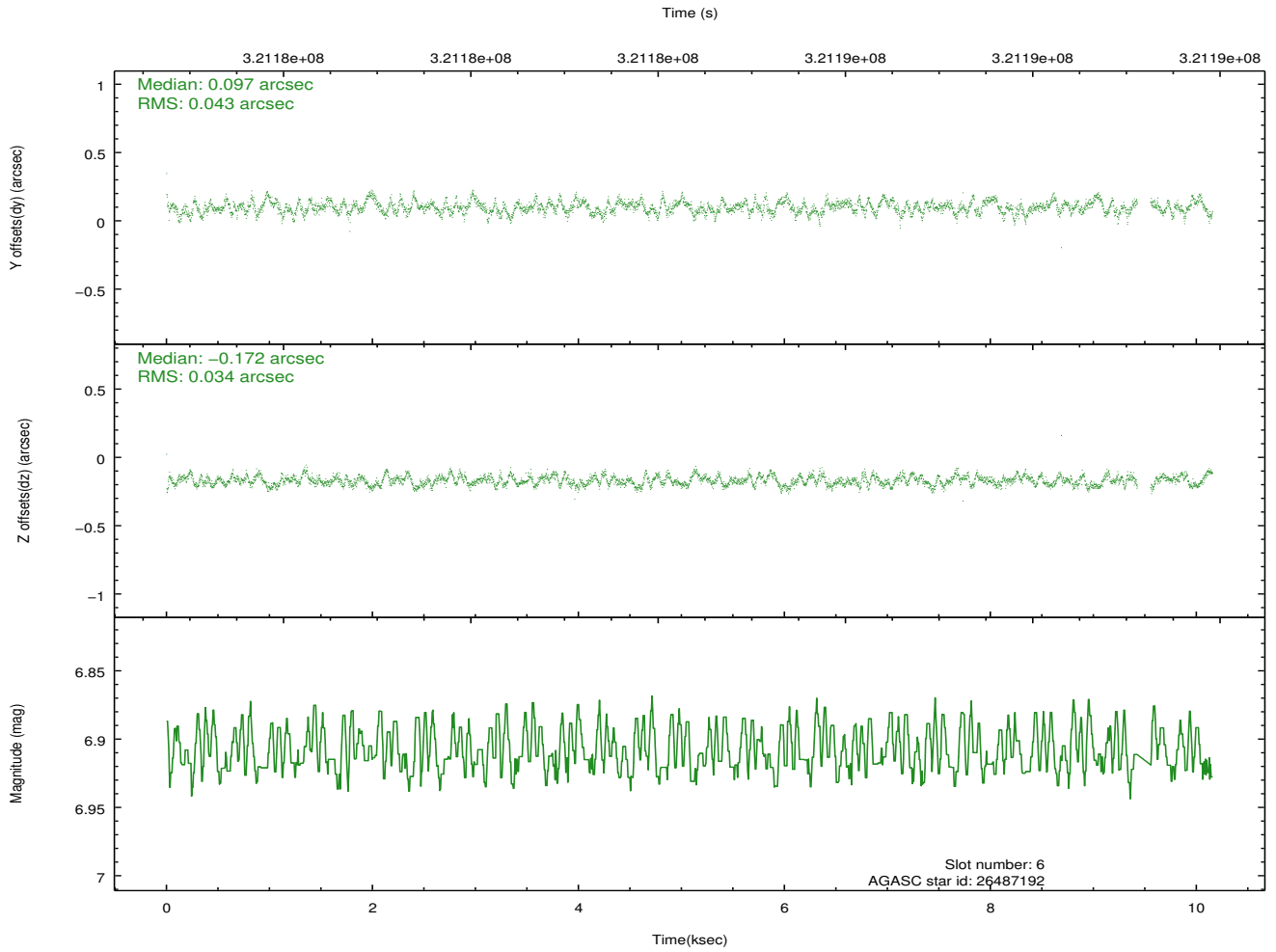
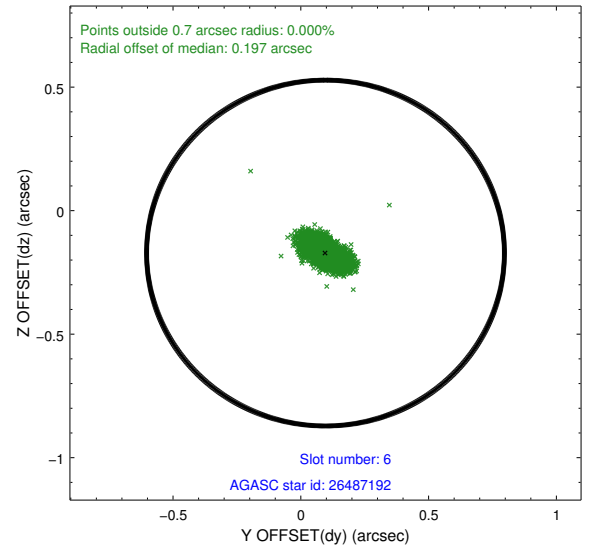
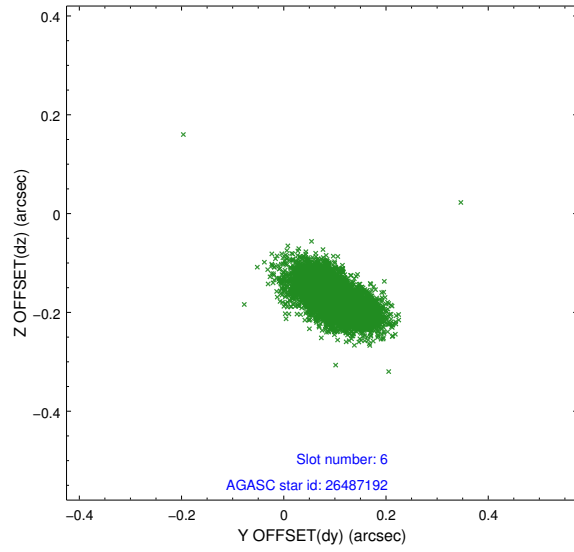
2.4.2 Slot 4



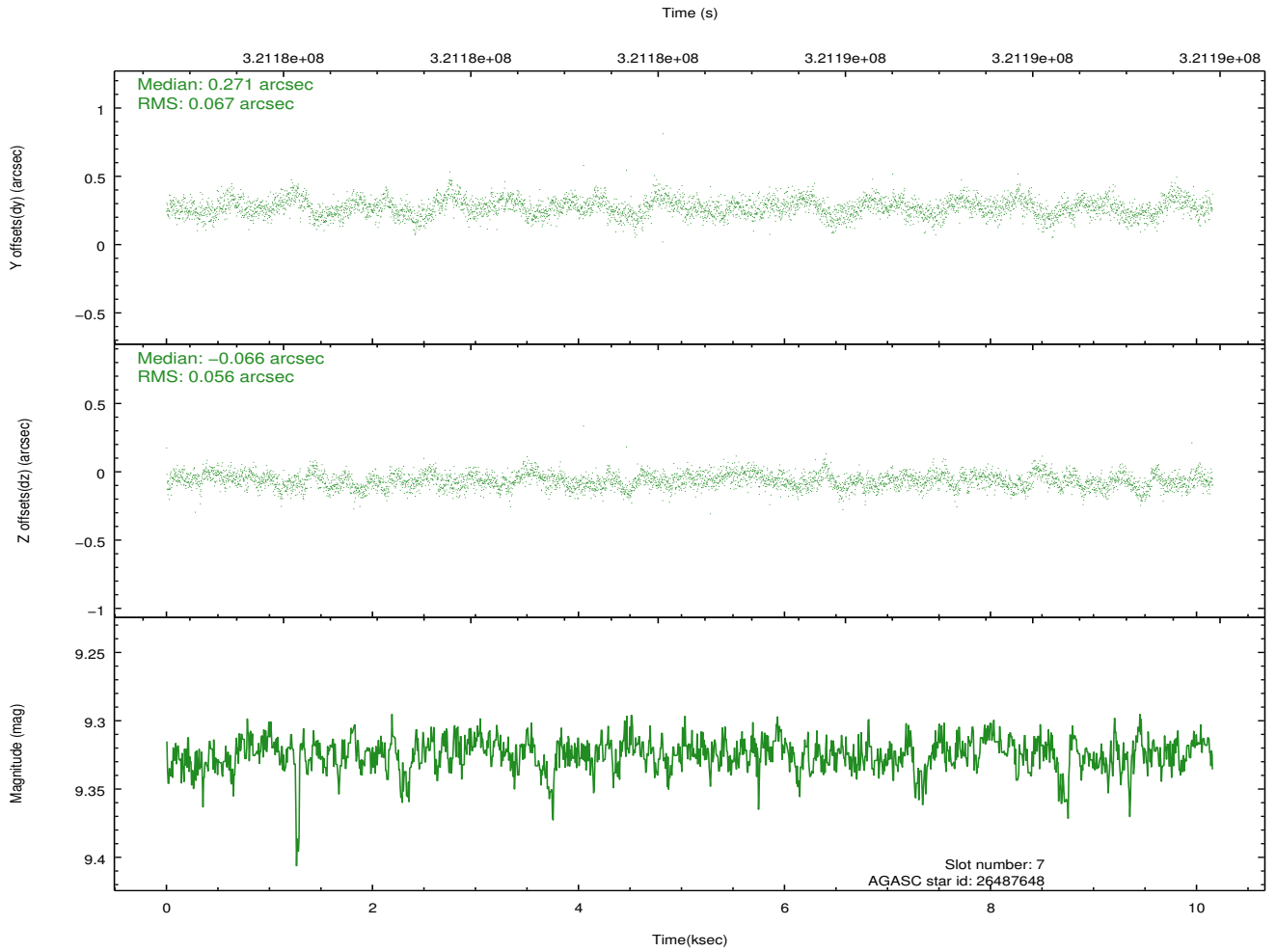
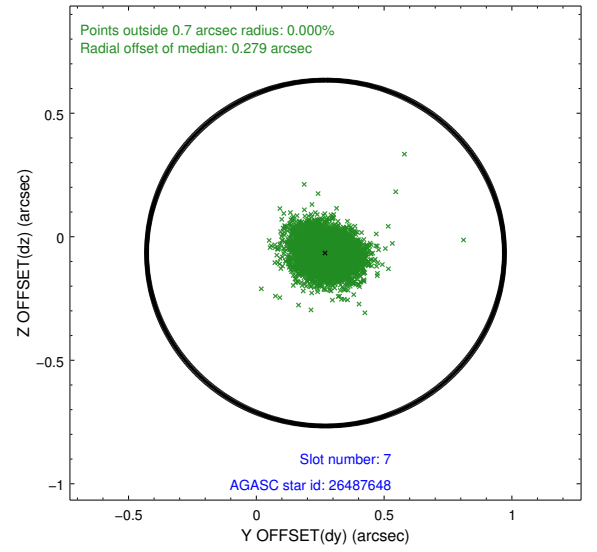
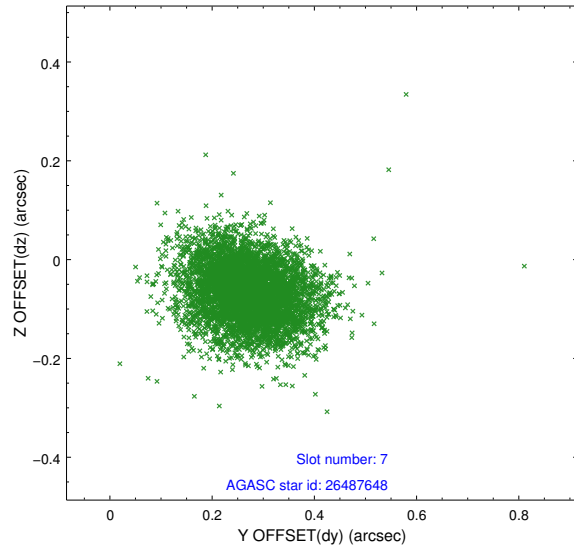
2.4.3 Slot 5



2.4.4 Slot 6

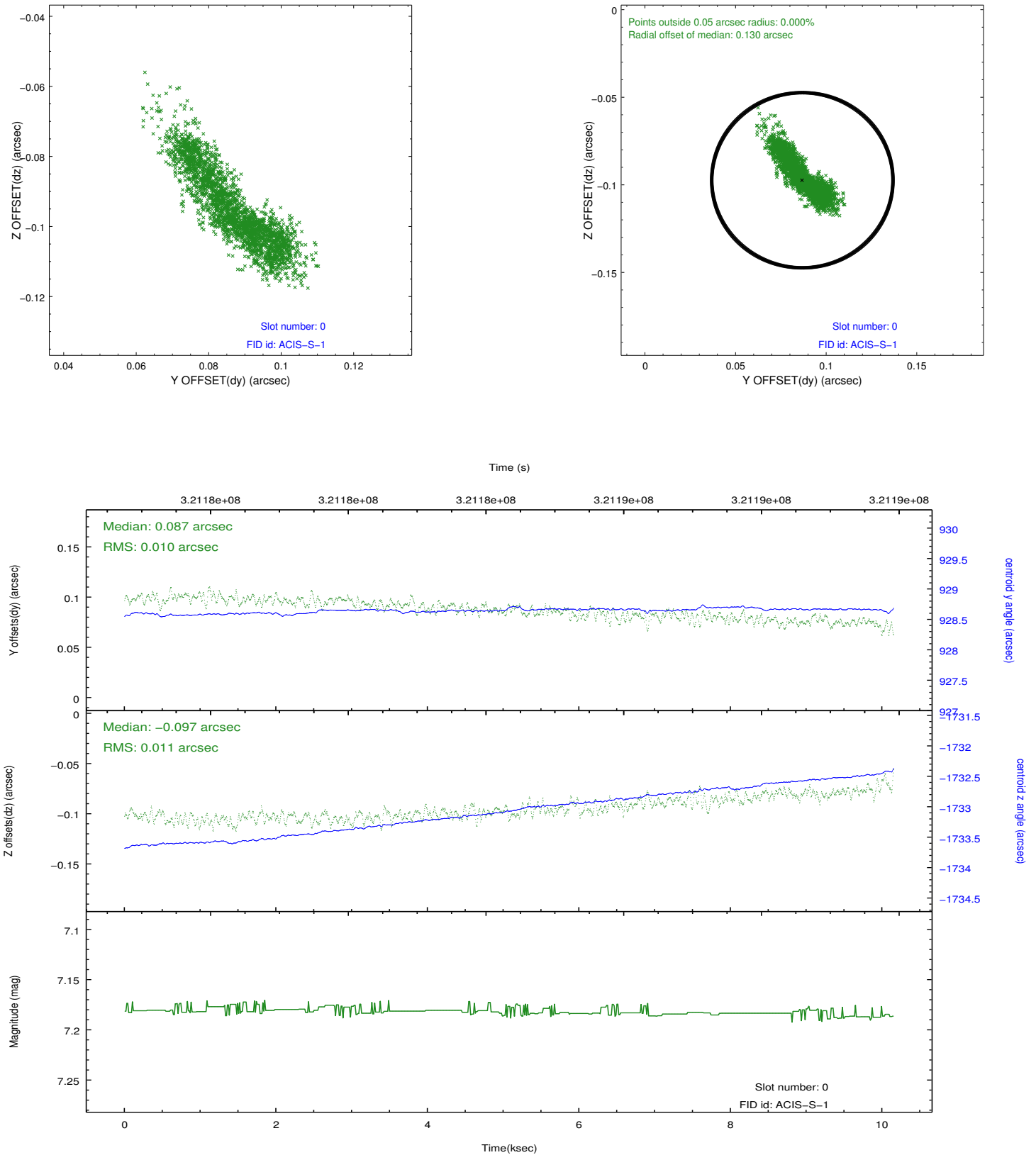


2.4.5 Slot 7

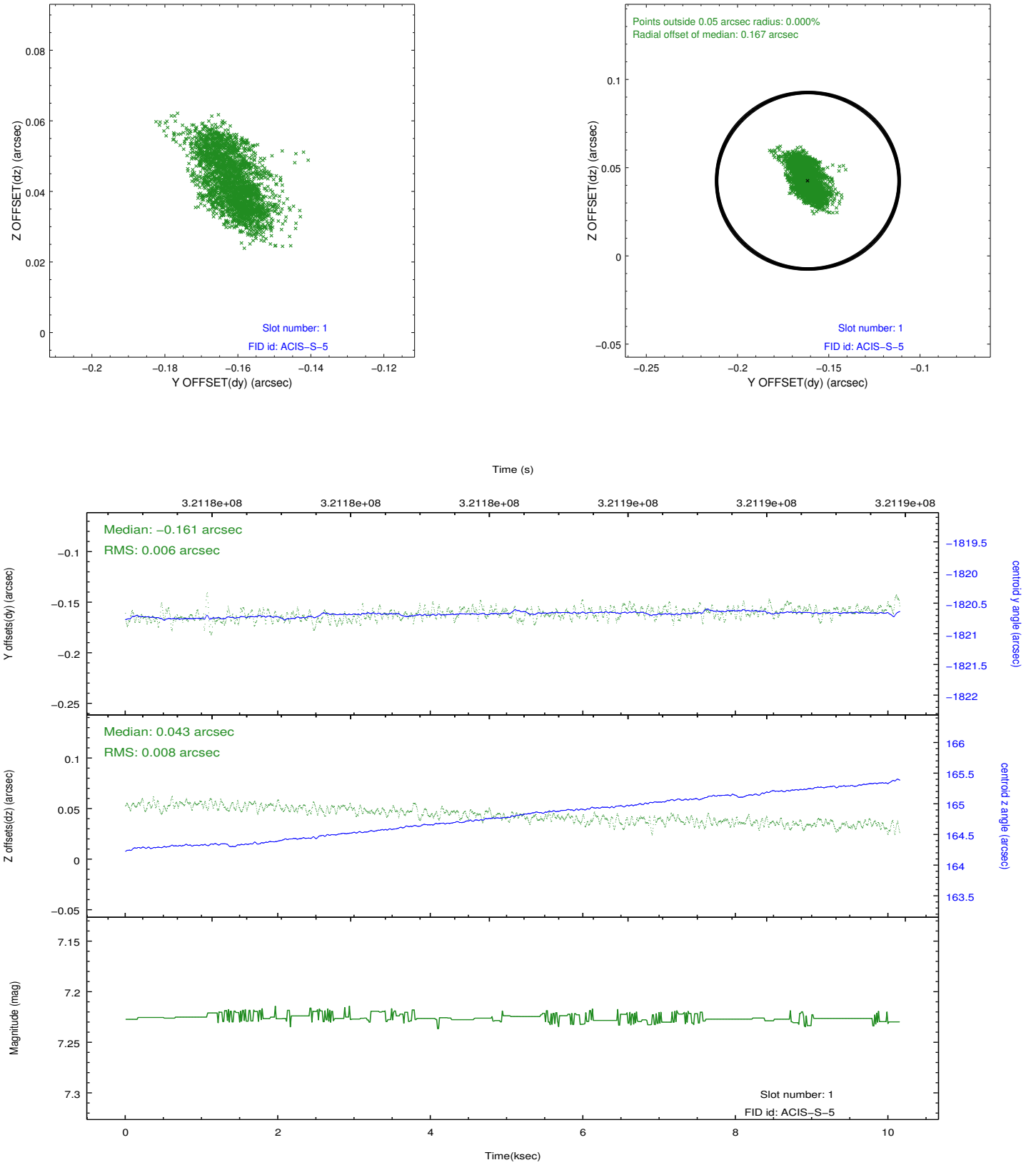


2.5 FID Slots

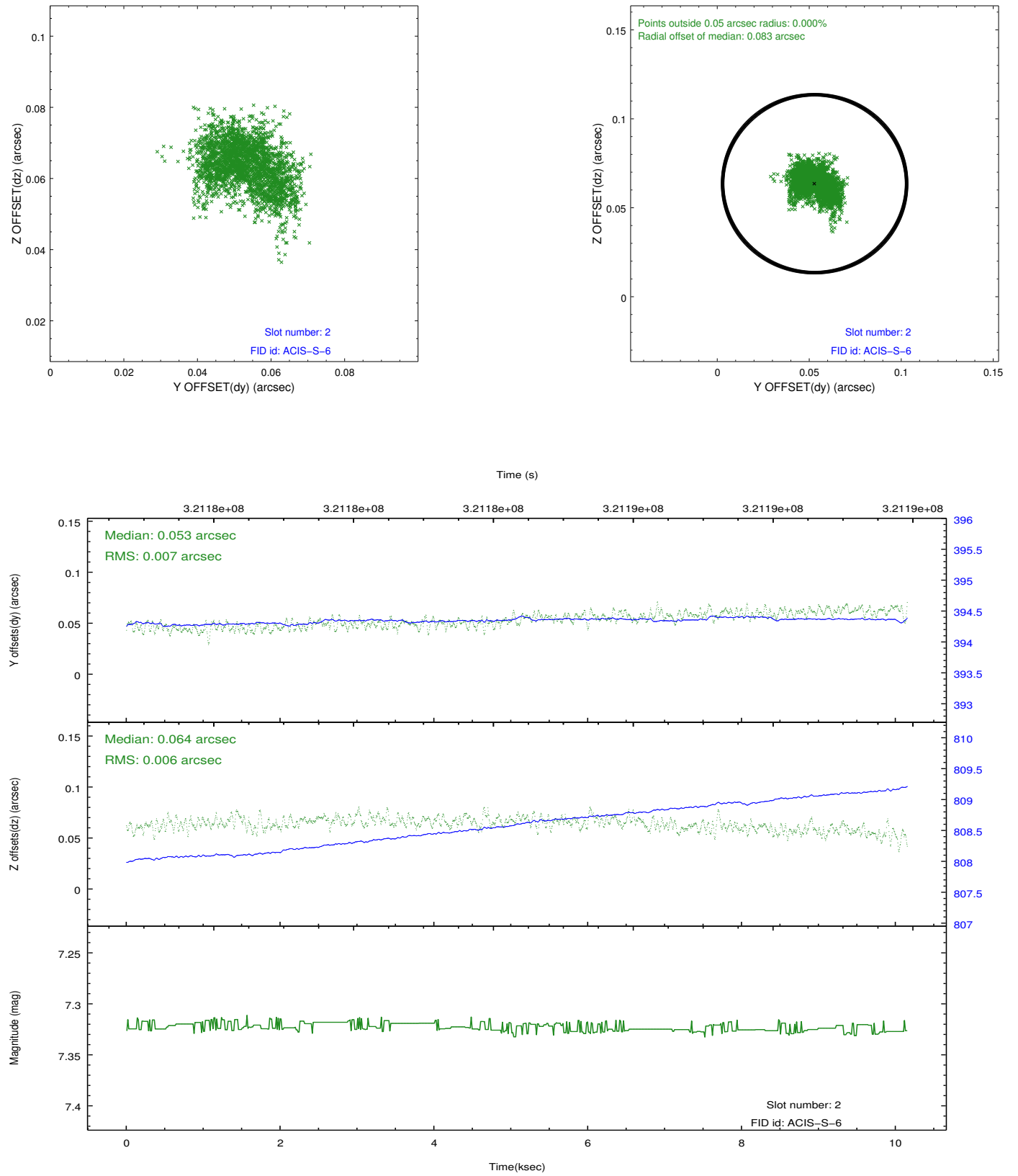
2.5.1 Slot 0



2.5.2 Slot 1



2.5.3 Slot 2



A Summary

A.1 Status

V&V Scientist	Jen Lauer
V&V Date (YYYY-MM-DD)	2012.05.14
V&V Edition	1
V&V Disposition and Status	OK
V&V Charge Time	10.1519002

A.2 Comments