

V&V Reference Report

L2 ASCDS Version : 8.4.4

Observation 9227 - L2 Version 2
Chandra X-Ray Center

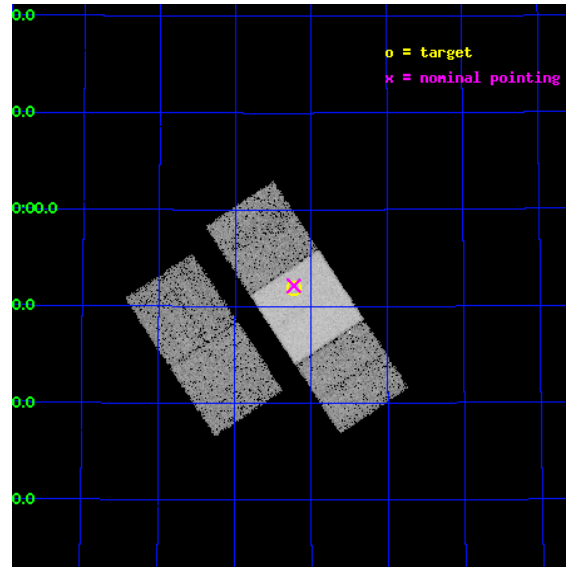
L2 Processing Date : May 28 2012

Contents

1	Front	2
2	OBI	3
2.1	OBI	3
2.1.1	Images	3
2.1.2	Bias	3
2.1.3	Parameters	4
2.1.4	Events	4
2.2	Compared Parameters	5
2.3	Aspect	6
2.4	Star Slots	9
2.4.1	Slot 3	9
2.4.2	Slot 4	10
2.4.3	Slot 5	11
2.4.4	Slot 6	12
2.4.5	Slot 7	13
2.5	FID Slots	14
2.5.1	Slot 0	14
2.5.2	Slot 1	15
2.5.3	Slot 2	16
A	Summary	17
A.1	Status	17
A.2	Comments	17

1 Front

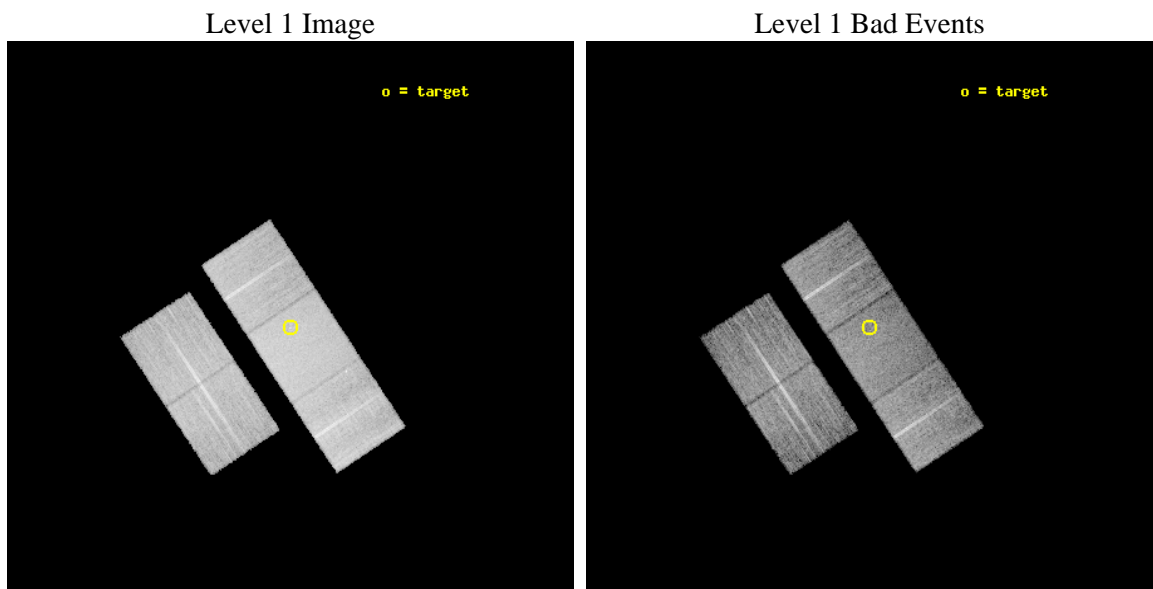
seq_num	701668	Sequence number
obs_id	9227	Observation id
title	Deconstructing the Accretion Disk Wind in Quasars	Proposal title
observer	Dr. Gordon Richards	Principal investigator
object	SDSS J1503+5751	Source name
dtcycle	0	
cycle	P	events from which exps? Prim/Second/Both
ra_targ	225.806667	Observer's specified target RA [deg]
dec_targ	57.864333	Observer's specified target Dec [deg]
ra_nom	225.80692061247	Nominal RA [deg]
dec_nom	57.869228366919	Nominal Dec [deg]
roll_nom	56.540970082122	Nominal Roll [deg]
revision	2	Processing version of data
ontime	10161.800078154	Sum of GTIs [s]
livetime	10029.028679124	Livetime [s]
ontime2	10161.800078154	Sum of GTIs [s]
ontime3	10161.800078154	Sum of GTIs [s]
ontime6	10161.800078154	Sum of GTIs [s]
ontime7	10161.800078154	Sum of GTIs [s]
ontime8	10161.800078154	Sum of GTIs [s]
l2events	104072	Number of level 2 events



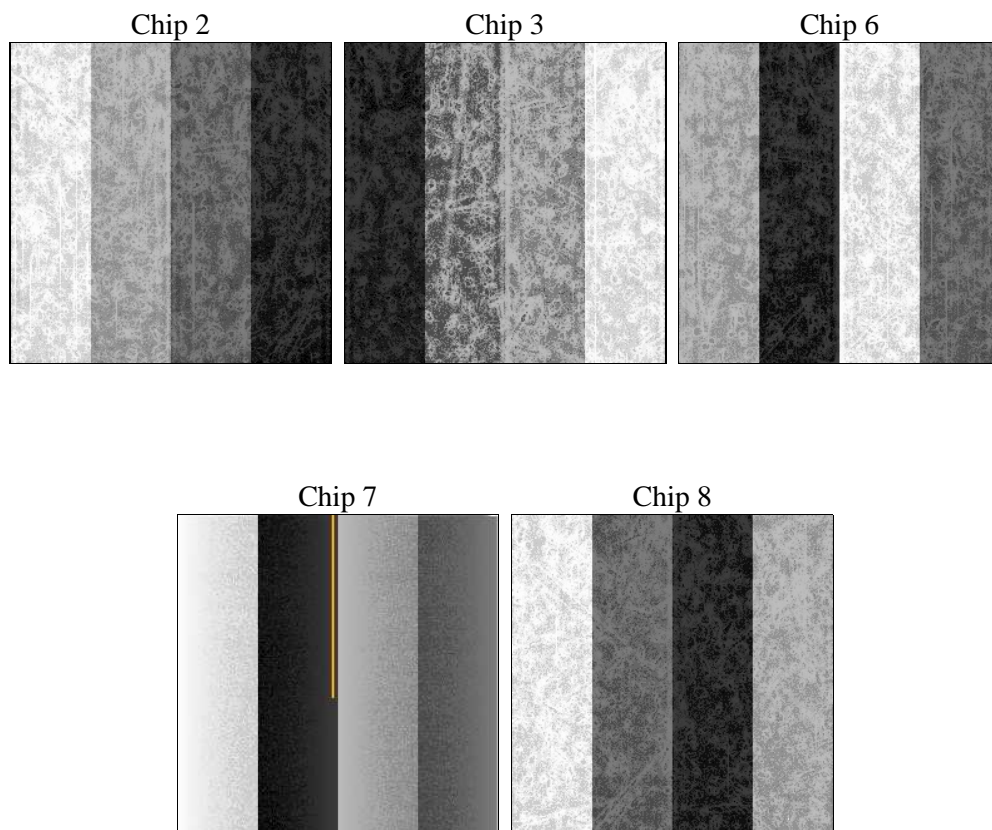
2 OBI

2.1 OBI

2.1.1 Images



2.1.2 Bias



2.1.3 Parameters

obi_num	0	Obi number	sched_exp_time	10000.000000	[s] Scheduled observation exposure time
ascdsver	8.4.4	Processing system revision	ontime	10161.800078154	Sum of GTIs [s]
caldsver	4.4.9	 	ontime2	10161.800078154	Sum of GTIs [s]
date	2012-05-28T12:24:30	Date and time of file creation	ontime3	10161.800078154	Sum of GTIs [s]
revision	2	Processing version of data	ontime6	10161.800078154	Sum of GTIs [s]
			ontime7	10161.800078154	Sum of GTIs [s]
			ontime8	10161.800078154	Sum of GTIs [s]
			l1events	585691	Number of level 1 events

2.1.4 Events

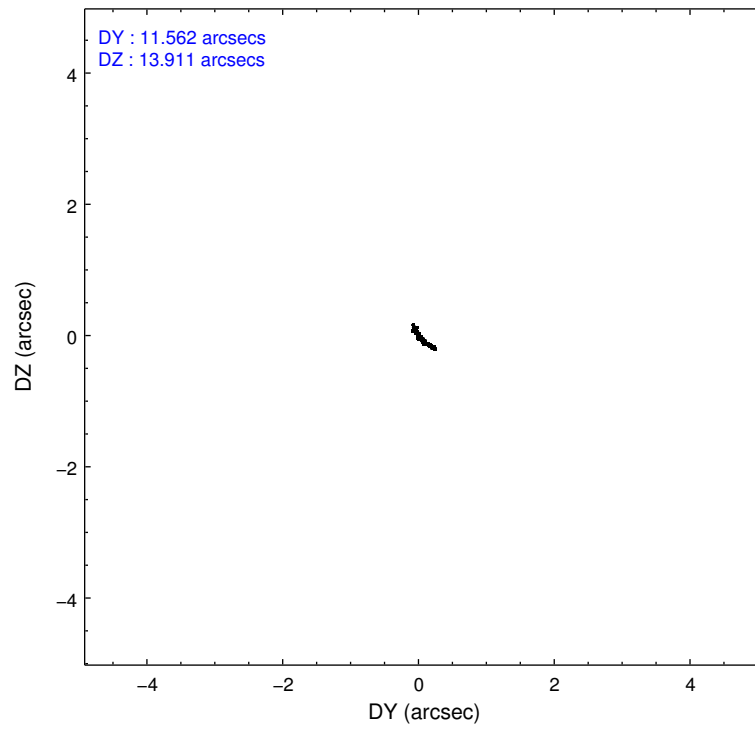
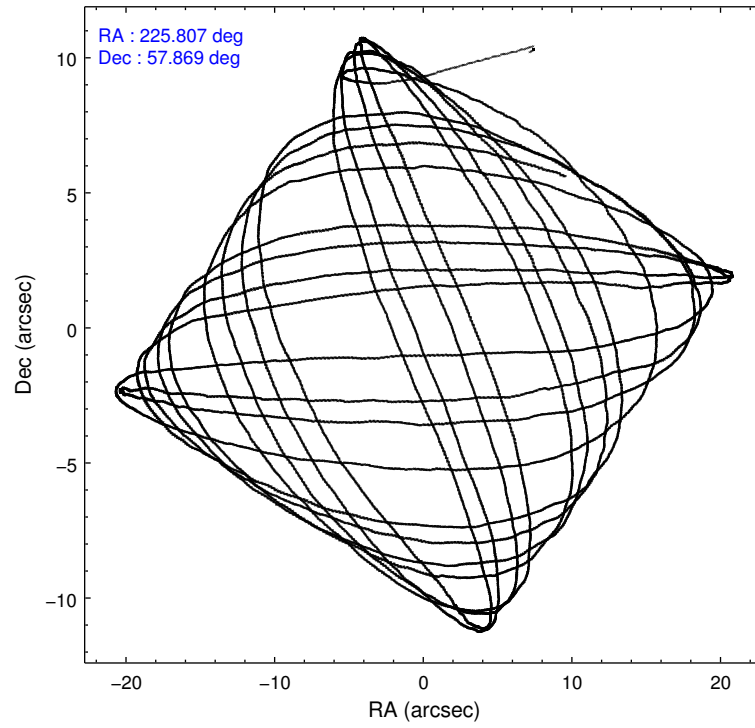
	ccd 2	ccd 3	ccd 6	ccd 7	ccd 8
level 1 events	99561	101294	105463	145099	134274
rejected events	87502	88911	92713	84923	103427
rejected %	87%	87%	87%	58%	77%

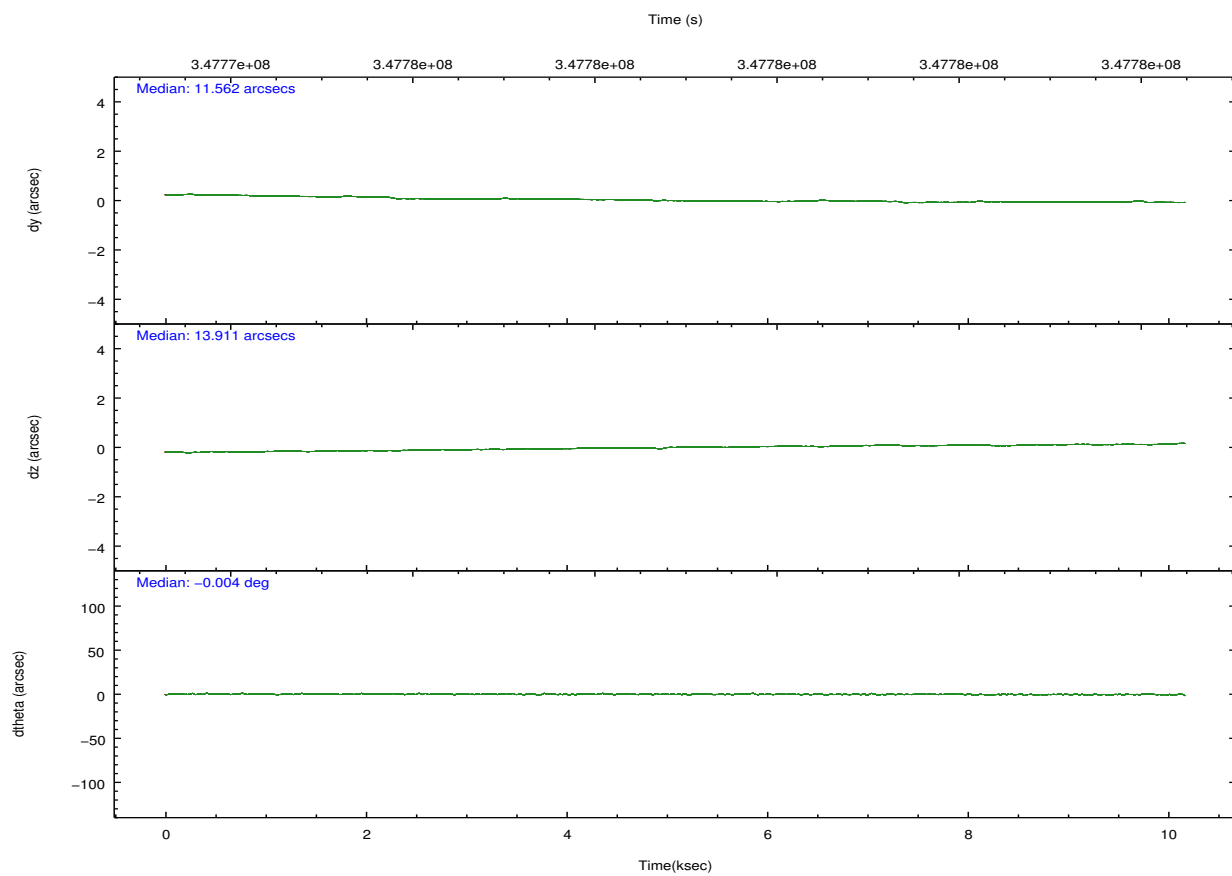
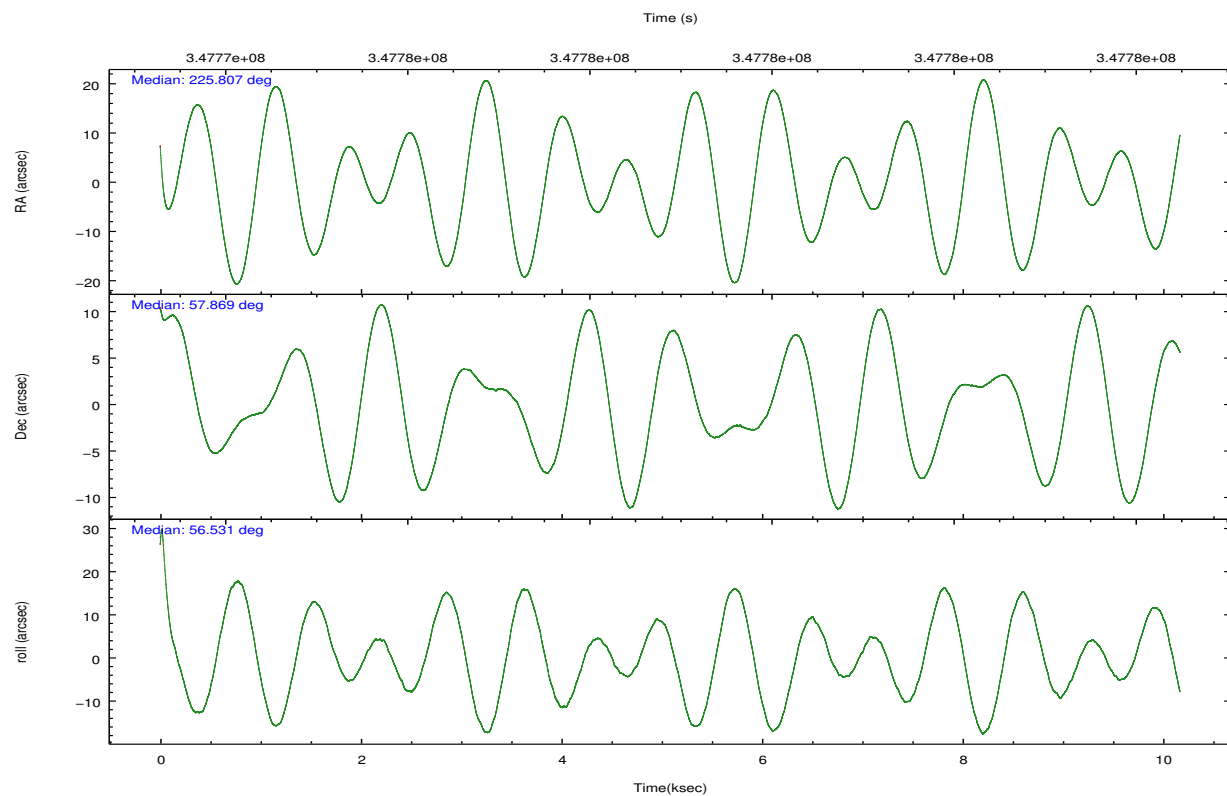
	ccd 2	ccd 3	ccd 6	ccd 7	ccd 8
grade 0 events	5192	5304	4975	5156	9851
	5%	5%	4%	3%	7%
grade 1 events	66	71	60	153	132
	0%	0%	0%	0%	0%
grade 2 events	2519	2510	2802	12448	7222
	2%	2%	2%	8%	5%
grade 3 events	1183	1160	1185	4977	3105
	1%	1%	1%	3%	2%
grade 4 events	1113	1168	1203	5016	2823
	1%	1%	1%	3%	2%
grade 5 events	4166	4898	4968	13481	6929
	4%	4%	4%	9%	5%
grade 6 events	2072	2252	2602	32672	7890
	2%	2%	2%	22%	5%
grade 7 events	83250	83931	87668	71196	96322
	83%	82%	83%	49%	71%

2.2 Compared Parameters

Parameter	Planned	Actual	Parameter	Planned	Actual
Instrument	ACIS	ACIS	Obspar format version number	7	7
Detector	ACIS-23678	ACIS-23678	Obspar file type	PREDICTED	ACTUAL
Grating	NONE	NONE	Obspar update status	NONE	UPDATED
Data mode	FAINT	FAINT	CCD I0 on	N	N
Observation mode	POINTING	POINTING	CCD I1 on	N	N
[deg] Pointing RA	225.804544	225.8069206124661	CCD I2 on	O1	Y
[deg] Pointing Dec	57.841857	57.86922836691909	CCD I3 on	Y	Y
[deg] Pointing Roll	56.386316	56.54097008212197	CCD S0 on	N	N
[mm] SIM focus pos	-0.684267	-0.6828225247311905	CCD S1 on	N	N
[mm] SIM defocus	0	0.001444936568705701	CCD S2 on	Y	Y
[mm] SIM translation stage pos	-190.132523	-190.1400660498719	CCD S3 on	Y	Y
[mm] SIM translation stage offset	0	0.00754346686406393	CCD S4 on	Y	Y
[s] Observation start time (MET)	347773953.184000	347772954.15323	CCD S5 on	N	N
Observation start date	2009-01-08T03:51:27	2009-01-08T03:35:54	Number of optional ACIS chips dropped	0	0
[s] Observation end time (MET)	347783953.184000	347784708.85381	On-chip summing requested	N	N
Observation end date	2009-01-08T06:38:07	2009-01-08T06:51:48	Subarray requested	NONE	NONE
Read mode	TIMED	TIMED	Alternating exposures requested	N	N
			[s] Primary exposure time	0.000000	3.1

2.3 Aspect



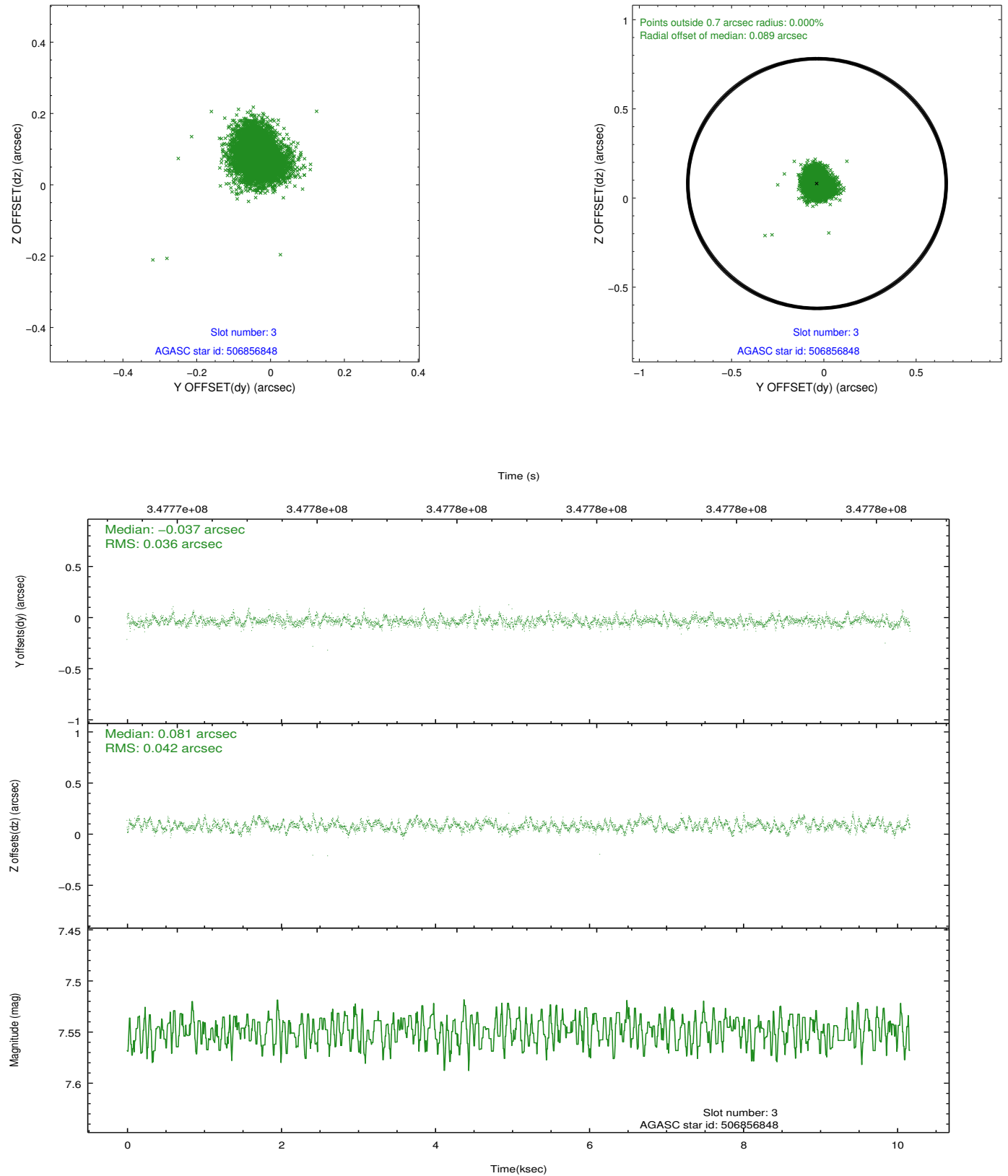


Slot Statistics

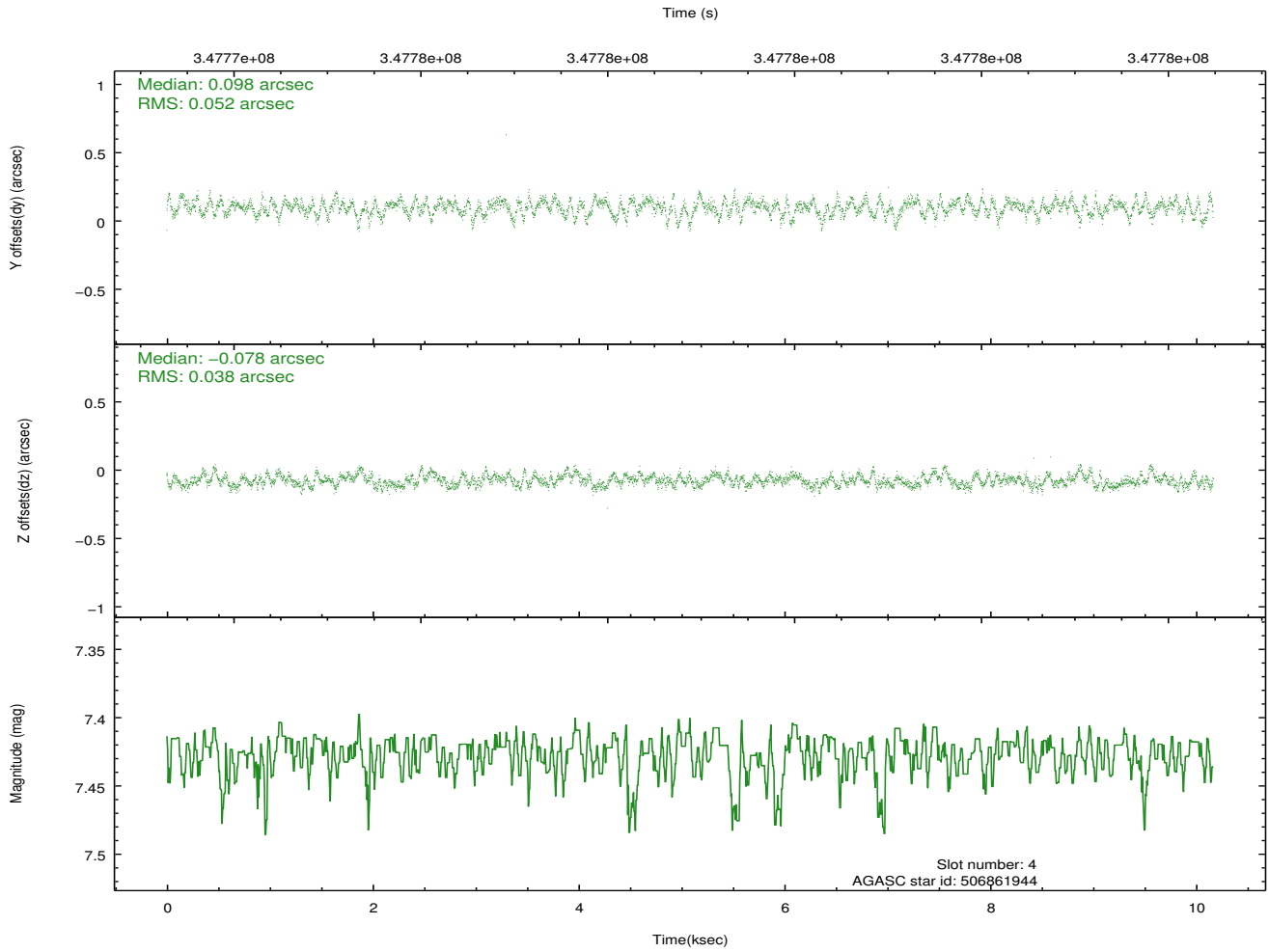
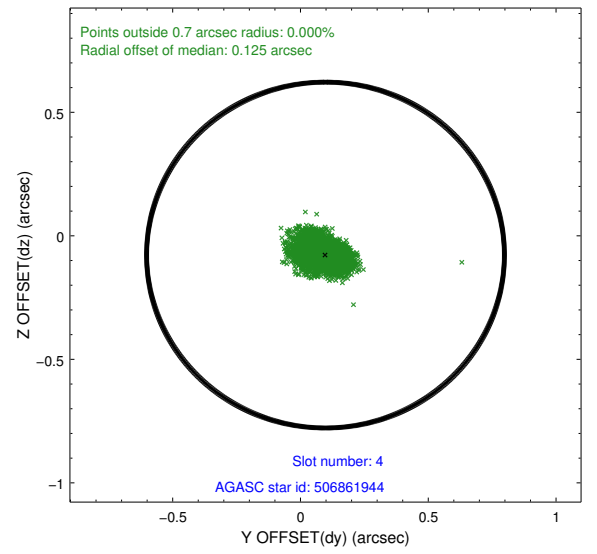
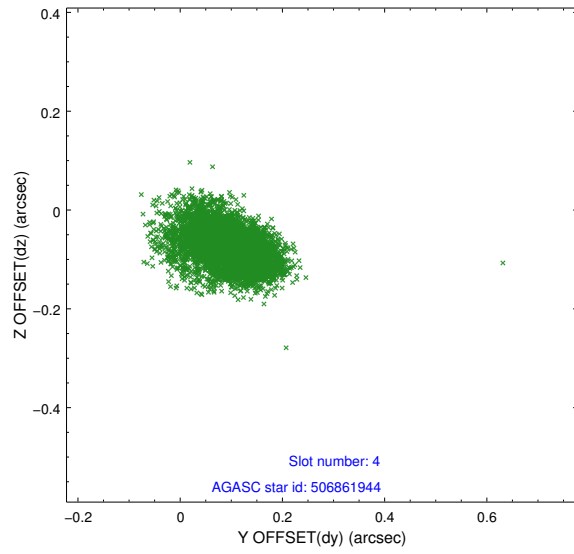
slot	status	id	mag	n_pts	med_dy	med_dz	dr1	dr2	ra	dec	mean_y	mean_z
0	FID	ACIS-S-2	6.90	2480	-0.033	-0.022	0.007	0.012	0.000000	0.000000	-764.51	-1735.27
1	FID	ACIS-S-4	6.99	2481	0.114	0.022	0.005	0.010	0.000000	0.000000	2148.68	172.72
2	FID	ACIS-S-5	7.02	2481	-0.112	0.009	0.007	0.012	0.000000	0.000000	-1816.76	166.97
3	GUIDE	506856848	7.55	4960	-0.037	0.081	0.059	0.093	226.510360	57.751582	486.29	-1303.89
4	GUIDE	506861944	7.43	4961	0.098	-0.078	0.067	0.114	224.335957	57.649138	-2118.75	1988.24
5	GUIDE	506865176	8.80	4957	0.137	-0.045	0.073	0.117	225.131612	57.554604	-1575.59	513.59
6	GUIDE	507775504	7.09	4960	-0.124	0.328	0.064	0.106	227.063044	57.657016	806.28	-2373.99
7	GUIDE	506866016	8.46	4957	-0.074	-0.293	0.078	0.121	224.884750	58.299650	418.90	2367.55

2.4 Star Slots

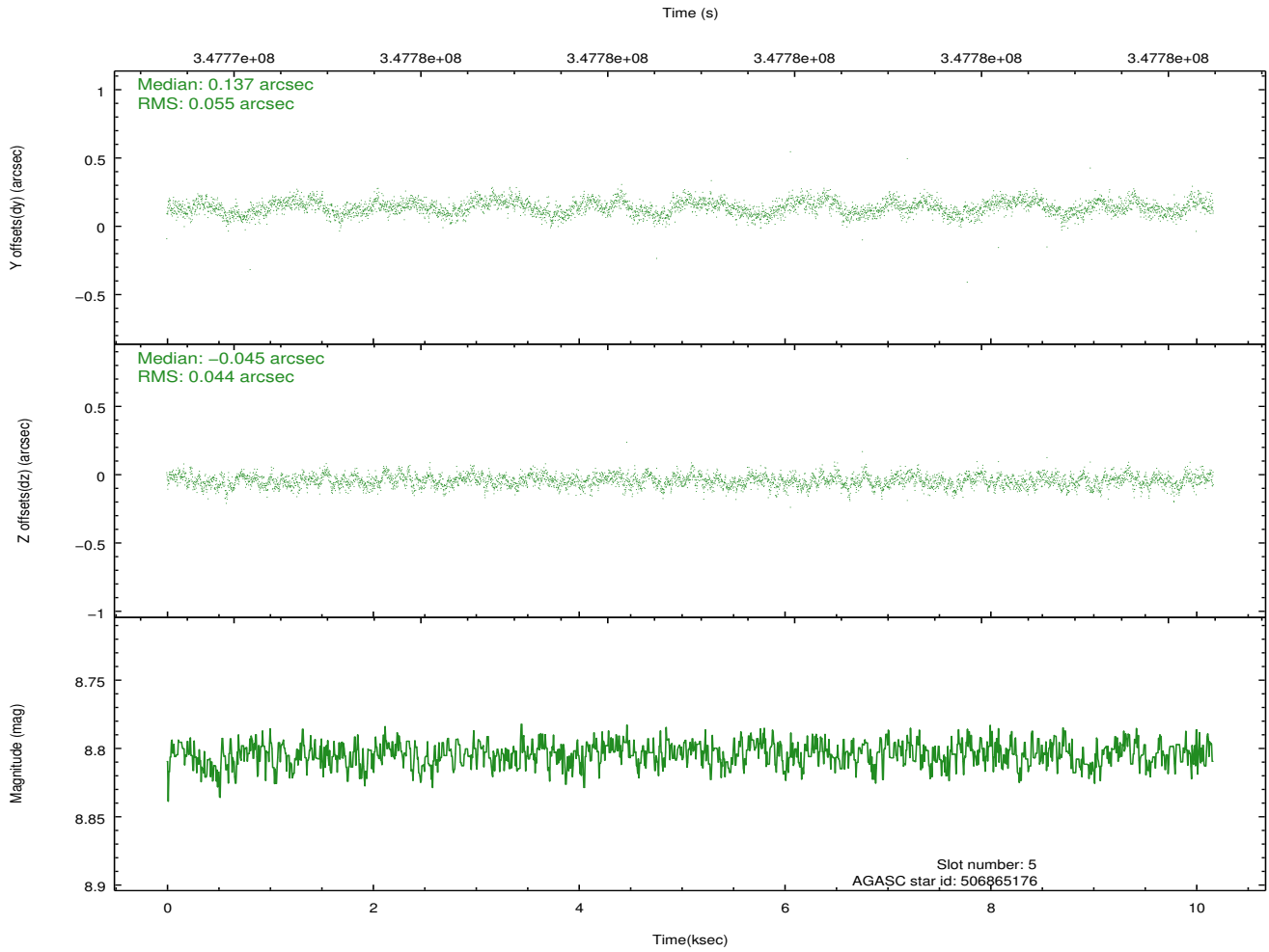
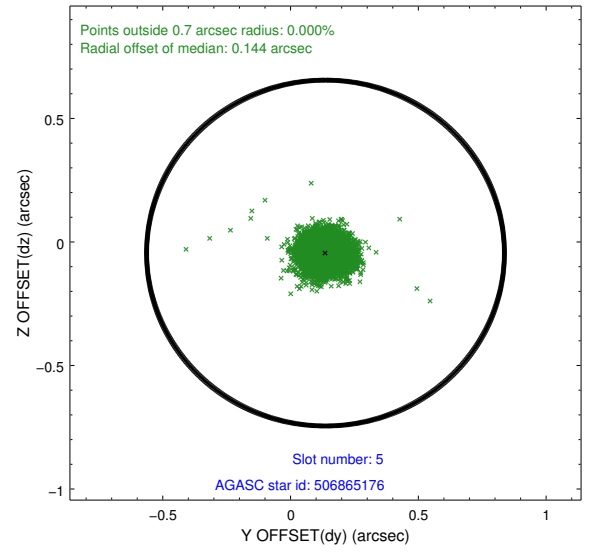
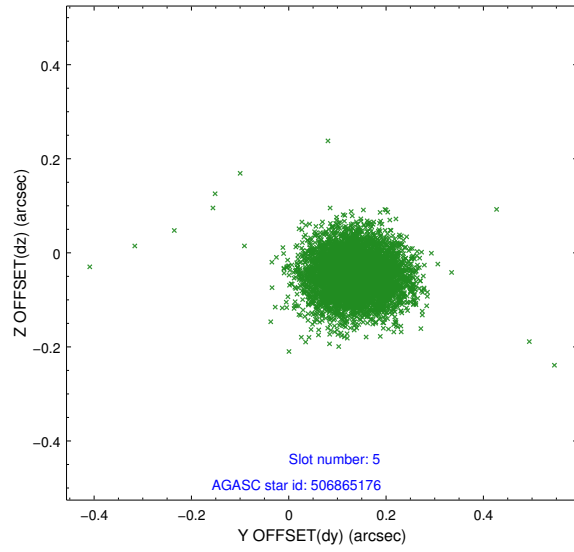
2.4.1 Slot 3



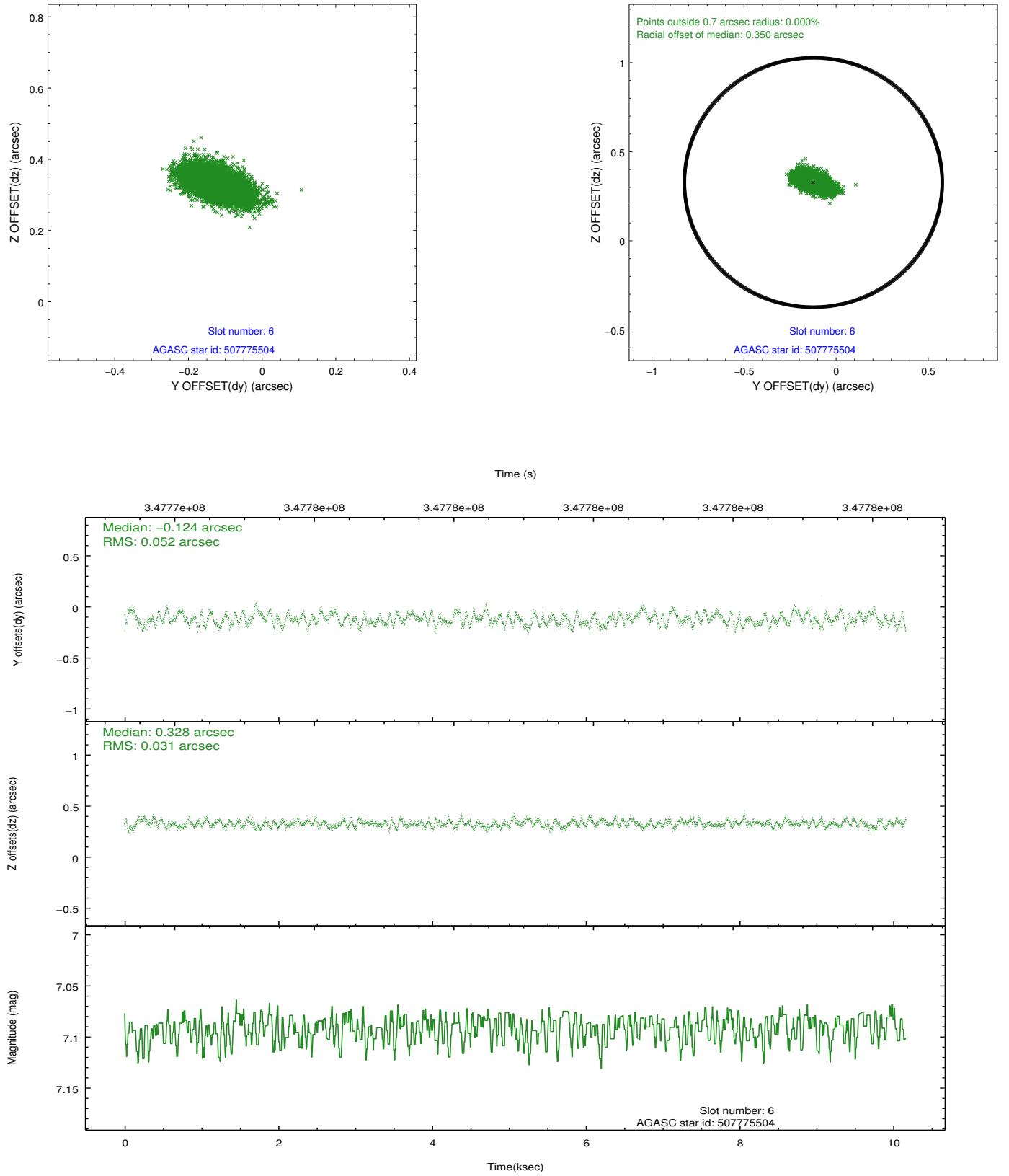
2.4.2 Slot 4



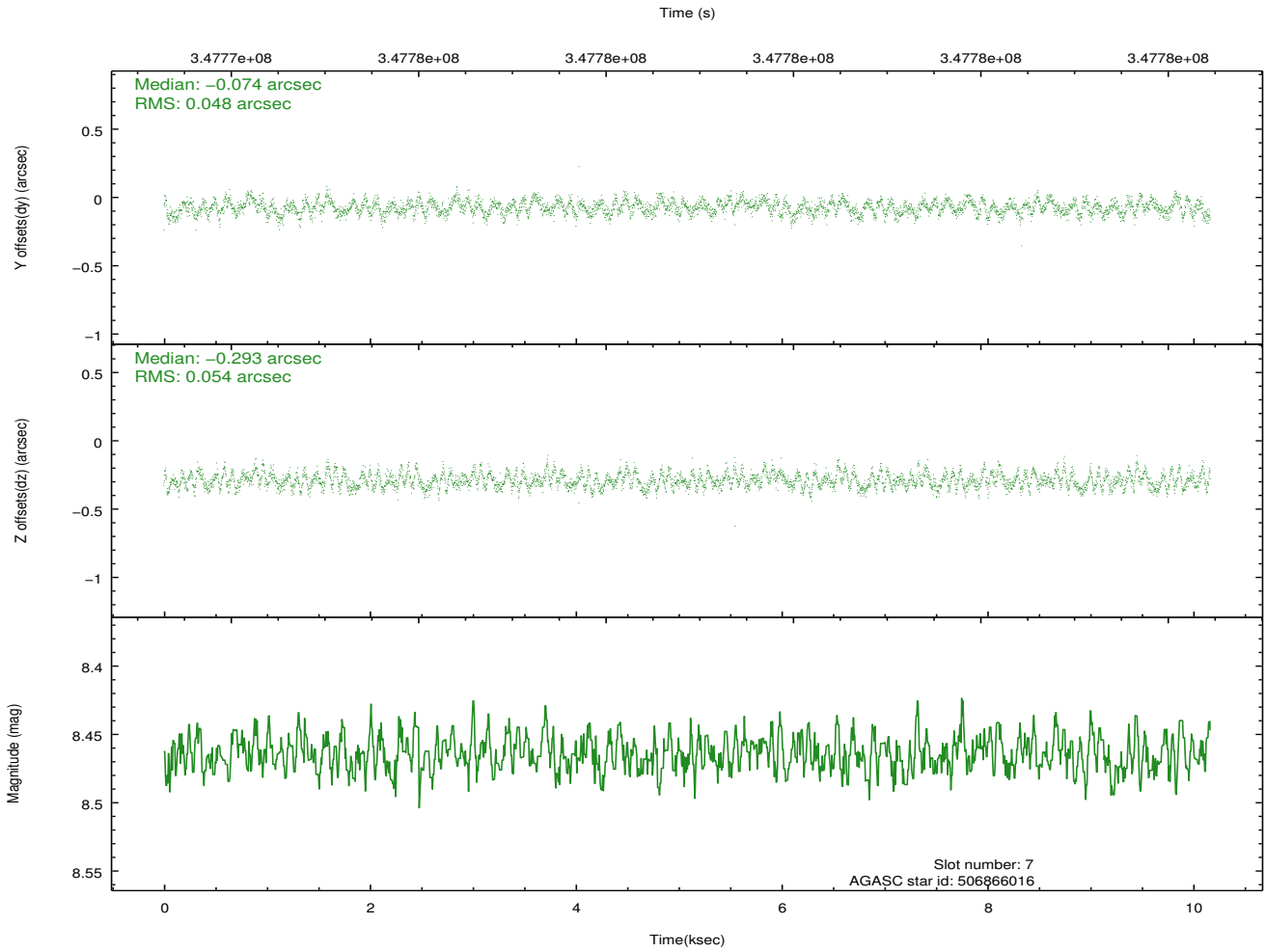
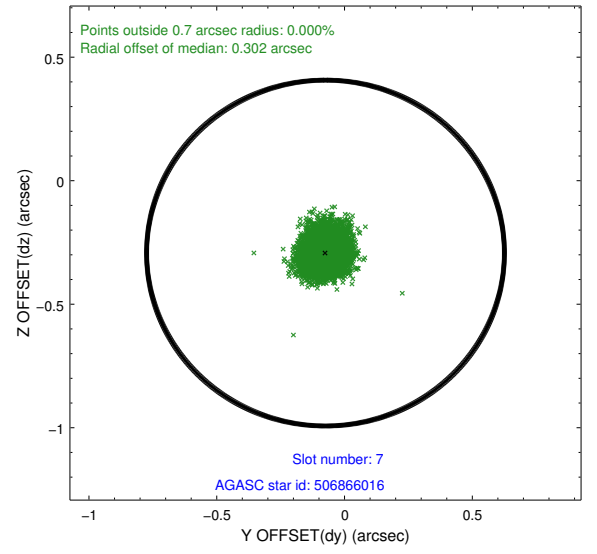
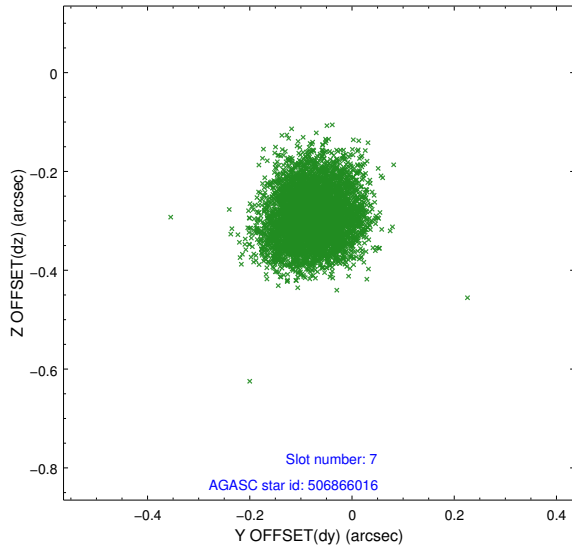
2.4.3 Slot 5



2.4.4 Slot 6

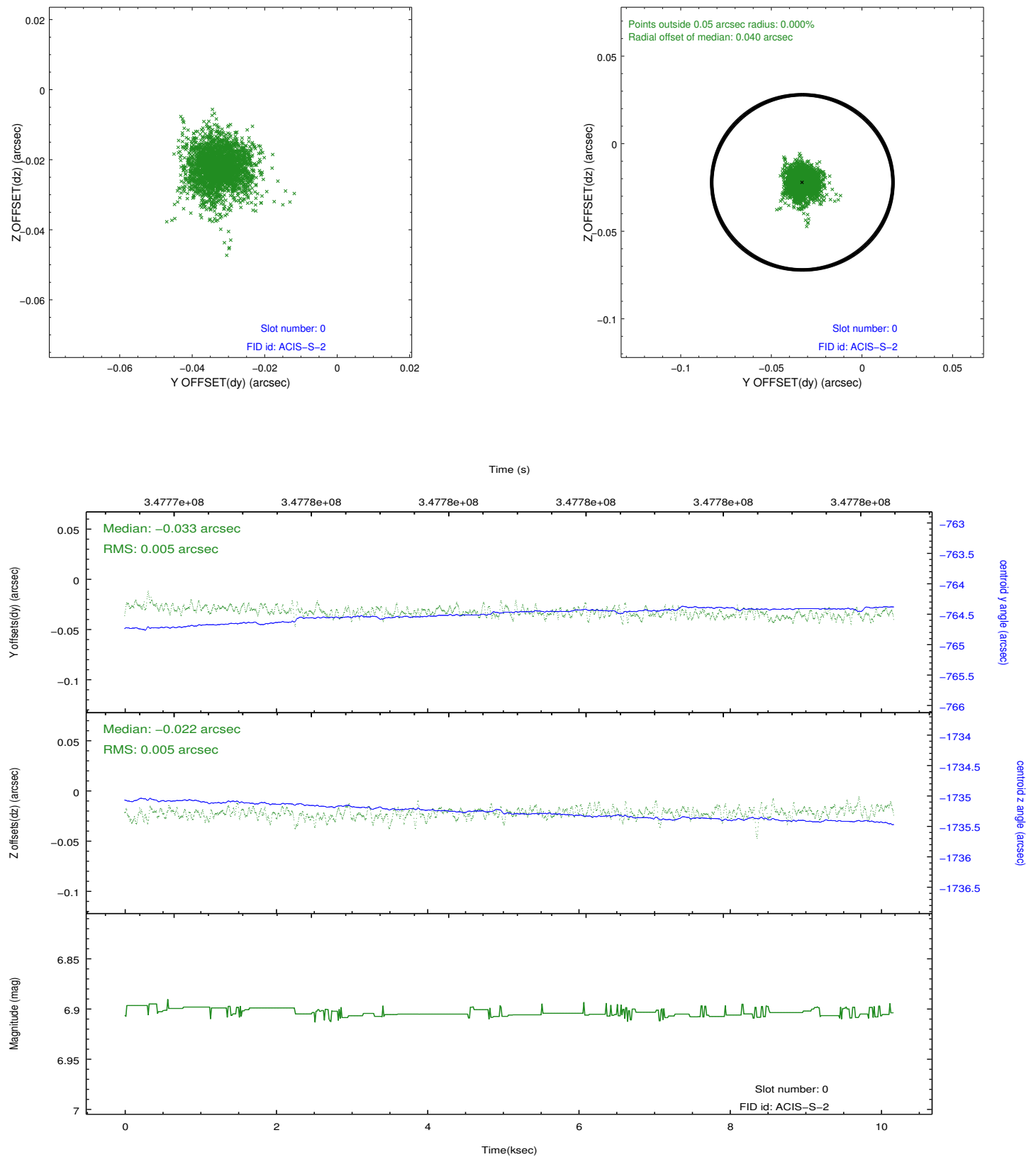


2.4.5 Slot 7

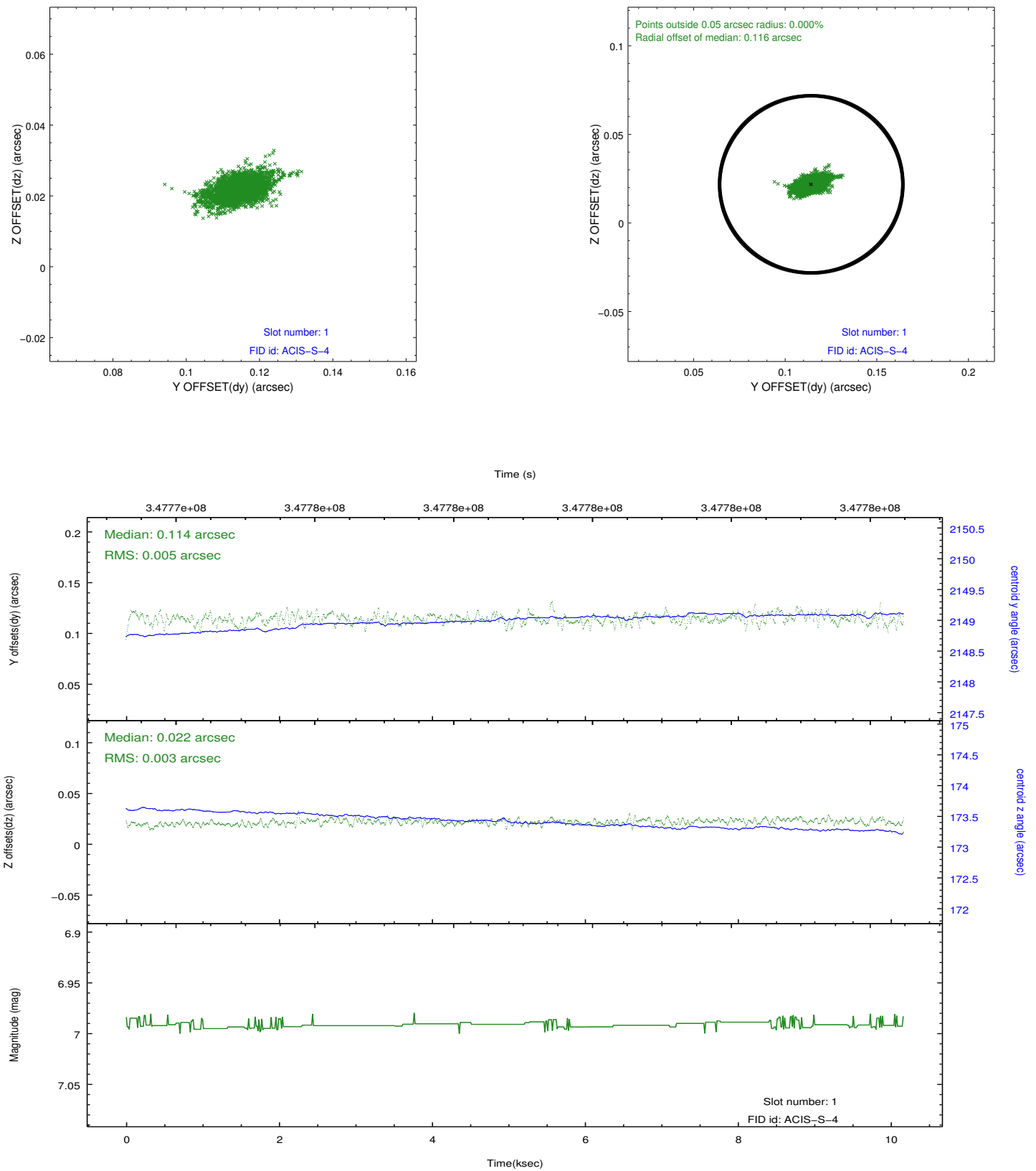


2.5 FID Slots

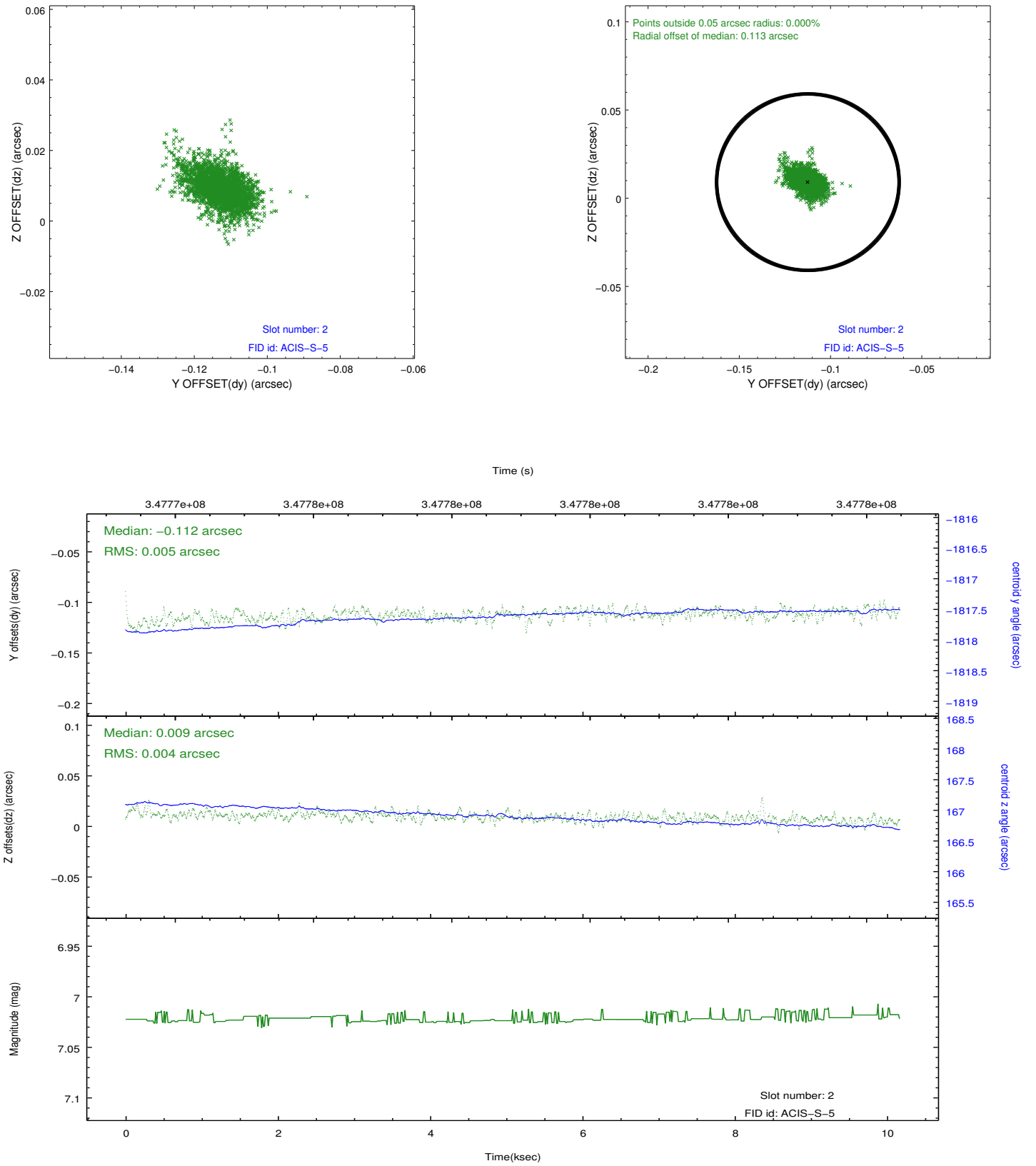
2.5.1 Slot 0



2.5.2 Slot 1



2.5.3 Slot 2



A Summary

A.1 Status

V&V Scientist	Jen Lauer
V&V Date (YYYY-MM-DD)	2012.06.04
V&V Edition	1
V&V Disposition and Status	OK
V&V Charge Time	10.1618

A.2 Comments