

# V&V Reference Report

## L2 ASCDS Version : 8.4.4

Observation 9167 - L2 Version 2  
Chandra X-Ray Center

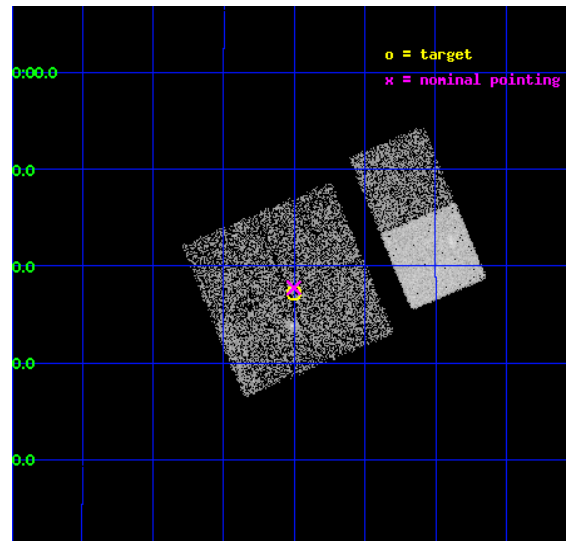
L2 Processing Date : May 7 2012

## Contents

<b>1</b>	<b>Front</b>	<b>2</b>
<b>2</b>	<b>OBI</b>	<b>3</b>
2.1	OBI . . . . .	3
2.1.1	Images . . . . .	3
2.1.2	Bias . . . . .	3
2.1.3	Parameters . . . . .	4
2.1.4	Events . . . . .	4
2.2	Compared Parameters . . . . .	5
2.3	Aspect . . . . .	6
2.4	Star Slots . . . . .	9
2.4.1	Slot 3 . . . . .	9
2.4.2	Slot 4 . . . . .	10
2.4.3	Slot 5 . . . . .	11
2.4.4	Slot 6 . . . . .	12
2.4.5	Slot 7 . . . . .	13
2.5	FID Slots . . . . .	14
2.5.1	Slot 0 . . . . .	14
2.5.2	Slot 1 . . . . .	15
2.5.3	Slot 2 . . . . .	16
<b>A</b>	<b>Summary</b>	<b>17</b>
A.1	Status . . . . .	17
A.2	Comments . . . . .	17

# 1 Front

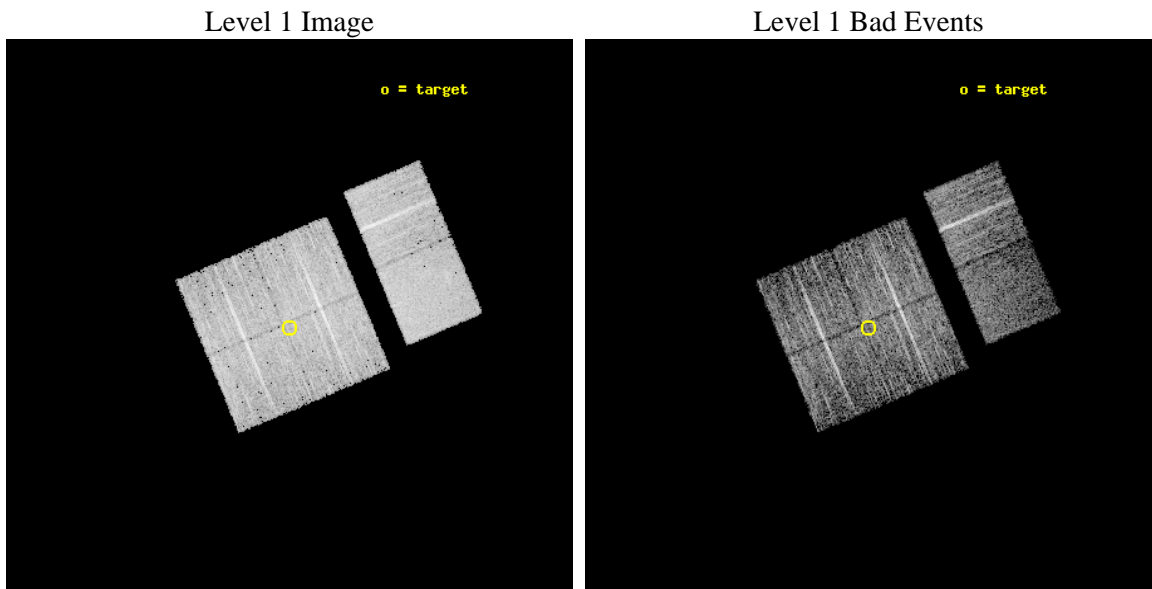
seq_num	701609	Sequence number
obs_id	9167	Observation id
title	Chandra follow-up observations of Swift/BAT unidentified sources: Searching for obscured type II quasars	Proposal title
observer	Dr. Peter Predehl	Principal investigator
object	J0811.5+0937	Source name
dtcycle	0	&#160
cycle	P	events from which exps? Prim/Second/Both
ra_targ	122.875	Observer's specified target RA [deg]
dec_targ	9.621389	Observer's specified target Dec [deg]
ra_nom	122.87572732552	Nominal RA [deg]
dec_nom	9.6293892240782	Nominal Dec [deg]
roll_nom	67.208464096466	Nominal Roll [deg]
revision	2	Processing version of data
ontime	5126.3999809623	Sum of GTIs [s]
livetime	5061.4864176559	Livetime [s]
ontime0	5126.3999809623	Sum of GTIs [s]
ontime1	5126.3999809623	Sum of GTIs [s]
ontime2	5126.3999809623	Sum of GTIs [s]
ontime3	5126.3999809623	Sum of GTIs [s]
ontime6	5126.3999809623	Sum of GTIs [s]
ontime7	5126.3999809623	Sum of GTIs [s]
l2events	37630	Number of level 2 events



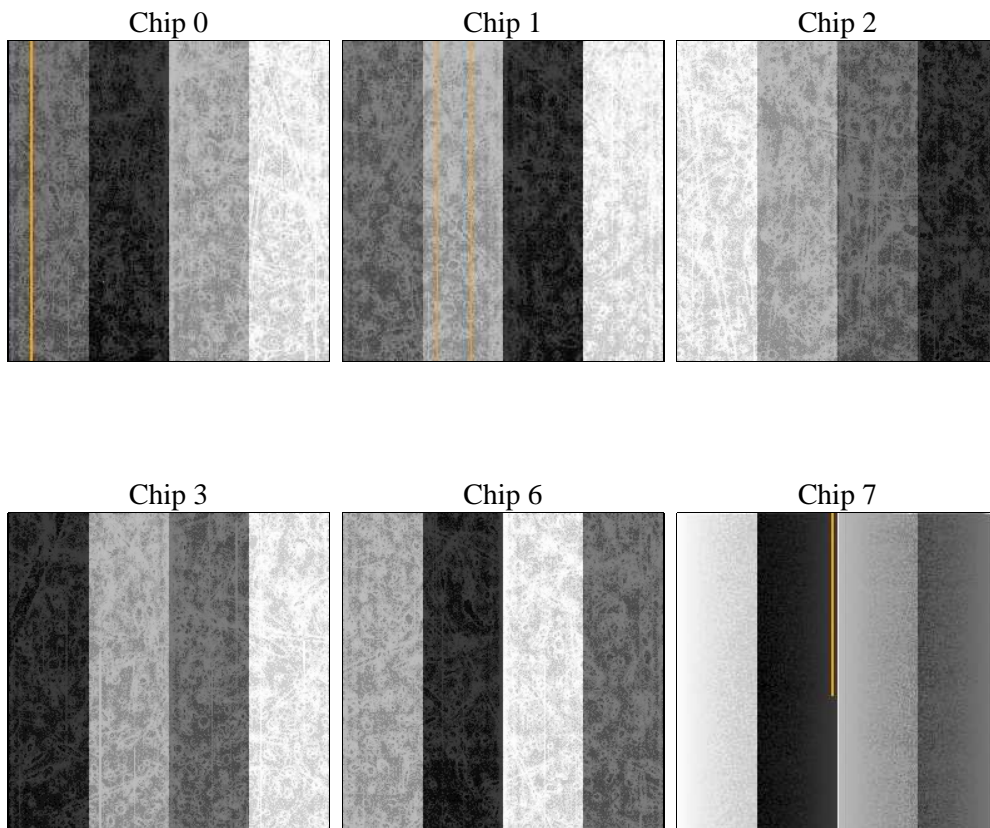
## 2 OBI

### 2.1 OBI

#### 2.1.1 Images



#### 2.1.2 Bias



### 2.1.3 Parameters

obi_num	0	Obi number	sched_exp_time	5000.000000	[s] Scheduled observation exposure time
ascdsver	8.4.4	Processing system revision	ontime	5126.3999809623	Sum of GTIs [s]
caldsver	4.4.9	&#160	ontime0	5126.3999809623	Sum of GTIs [s]
date	2012-05-07T03:38:39	Date and time of file creation	ontime1	5126.3999809623	Sum of GTIs [s]
revision	2	Processing version of data	ontime2	5126.3999809623	Sum of GTIs [s]
			ontime3	5126.3999809623	Sum of GTIs [s]
			ontime6	5126.3999809623	Sum of GTIs [s]
			ontime7	5126.3999809623	Sum of GTIs [s]
			l1events	260974	Number of level 1 events

### 2.1.4 Events

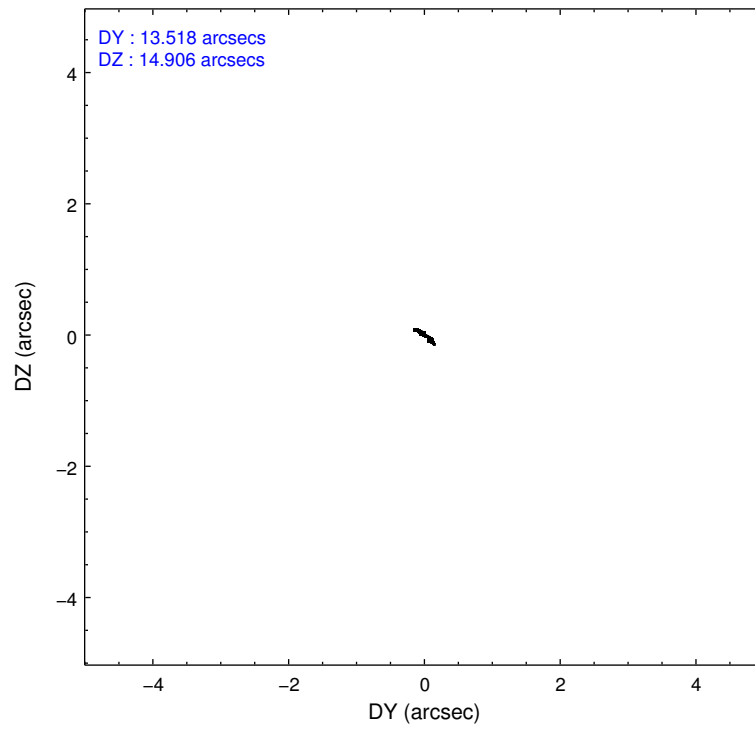
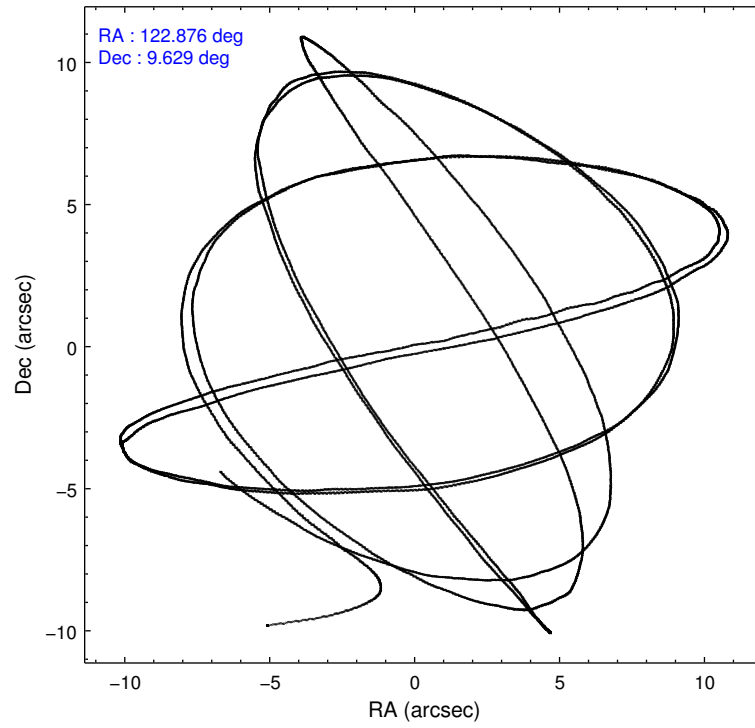
	ccd 0	ccd 1	ccd 2	ccd 3	ccd 6	ccd 7		ccd 0	ccd 1	ccd 2	ccd 3	ccd 6	ccd 7
level 1 events	39870	39865	45198	42012	45101	48928	grade 0 events	1526	1939	1540	1477	1560	2040
rejected events	35874	35114	41233	38142	40863	28031		3%	4%	3%	3%	3%	4%
rejected %	89%	88%	91%	90%	90%	57%	grade 1 events	21	25	20	18	24	69
								0%	0%	0%	0%	0%	0%
							grade 2 events	1056	1085	993	880	946	4379
								2%	2%	2%	2%	2%	8%
							grade 3 events	456	530	470	460	508	2028
								1%	1%	1%	1%	1%	4%
							grade 4 events	418	499	465	481	445	2057
								1%	1%	1%	1%	0%	4%
							grade 5 events	1503	1582	1364	1723	1790	5170
								3%	3%	3%	4%	3%	10%
							grade 6 events	778	976	725	815	1010	11646
								1%	2%	1%	1%	2%	23%
							grade 7 events	34112	33229	39621	36158	38818	21539
								85%	83%	87%	86%	86%	44%

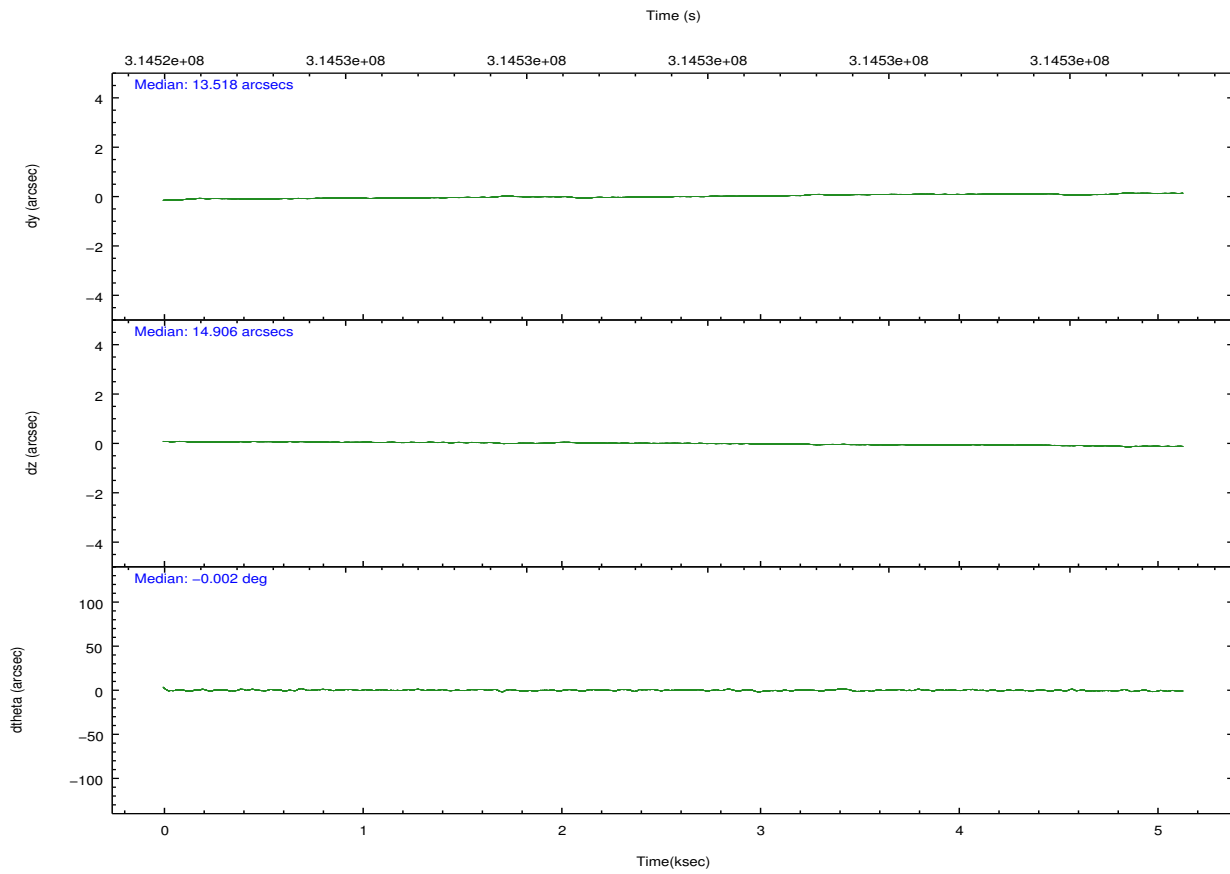
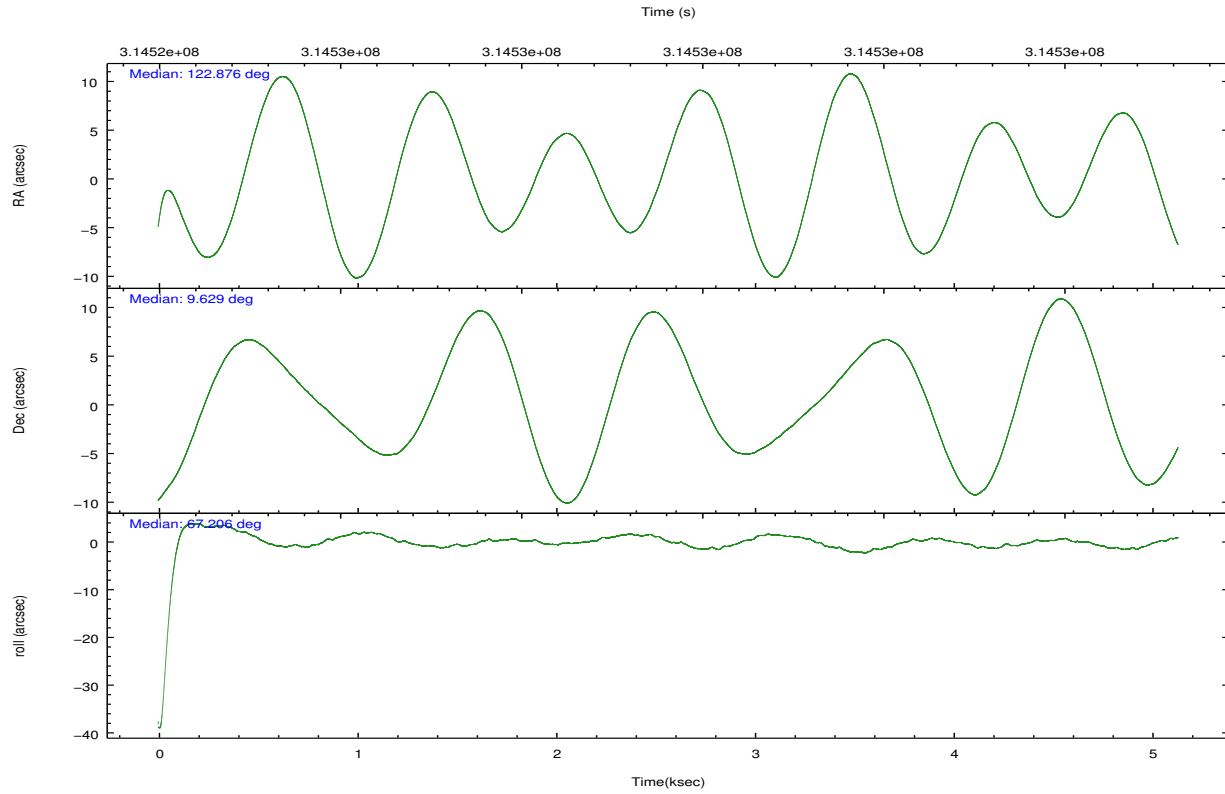


## 2.2 Compared Parameters

Parameter	Planned	Actual	Parameter	Planned	Actual
Instrument	ACIS	ACIS	Obspar format version number	7	7
Detector	ACIS-012367	ACIS-012367	Obspar file type	PREDICTED	ACTUAL
Grating	NONE	NONE	Obspar update status	NONE	UPDATED
Data mode	FAINT	FAINT	CCD I0 on	Y	Y
Observation mode	POINTING	POINTING	CCD I1 on	Y	Y
[deg] Pointing RA	122.879394	122.8757273255205	CCD I2 on	Y	Y
[deg] Pointing Dec	9.602162	9.629389224078171	CCD I3 on	Y	Y
[deg] Pointing Roll	66.999268	67.20846409646634	CCD S0 on	N	N
[mm] SIM focus pos	-0.782348	-0.7809083437167272	CCD S1 on	N	N
[mm] SIM defocus	0	0.001439871863259334	CCD S2 on	O2	Y
[mm] SIM translation stage pos	-233.592463	-233.5874344608287	CCD S3 on	O1	Y
[mm] SIM translation stage offset	0	-0.005018542100998502	CCD S4 on	N	N
[s] Observation start time (MET)	314525374.184000	314524176.49158	CCD S5 on	N	N
Observation start date	2007-12-20T08:08:29	2007-12-20T07:49:36	Number of optional ACIS chips dropped	0	0
[s] Observation end time (MET)	314530374.184000	314531709.21695	On-chip summing requested	N	N
Observation end date	2007-12-20T09:31:49	2007-12-20T09:55:09	Subarray requested	NONE	NONE
Read mode	TIMED	TIMED	Alternating exposures requested	N	N
			[s] Primary exposure time	0.000000	3.2

## 2.3 Aspect



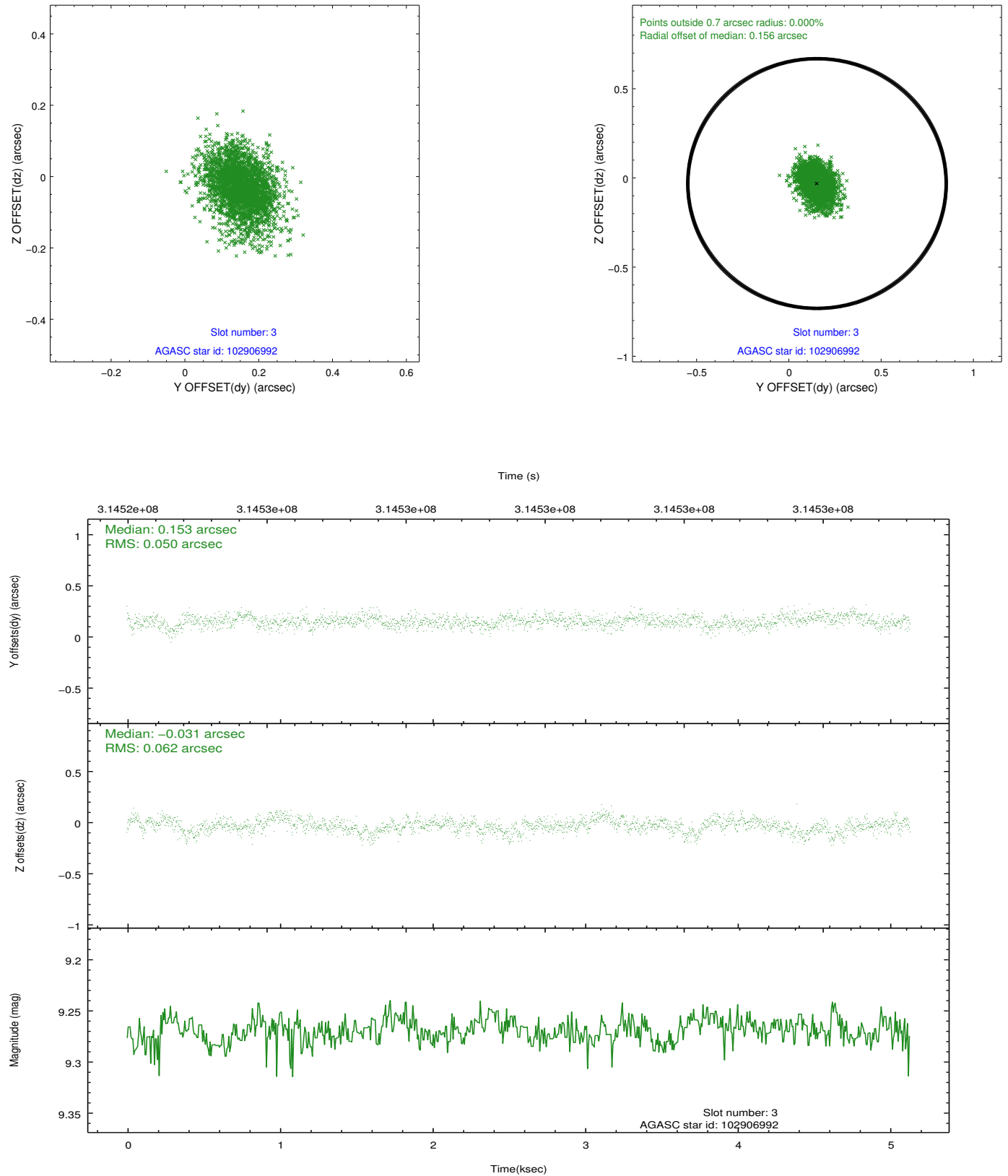


### Slot Statistics

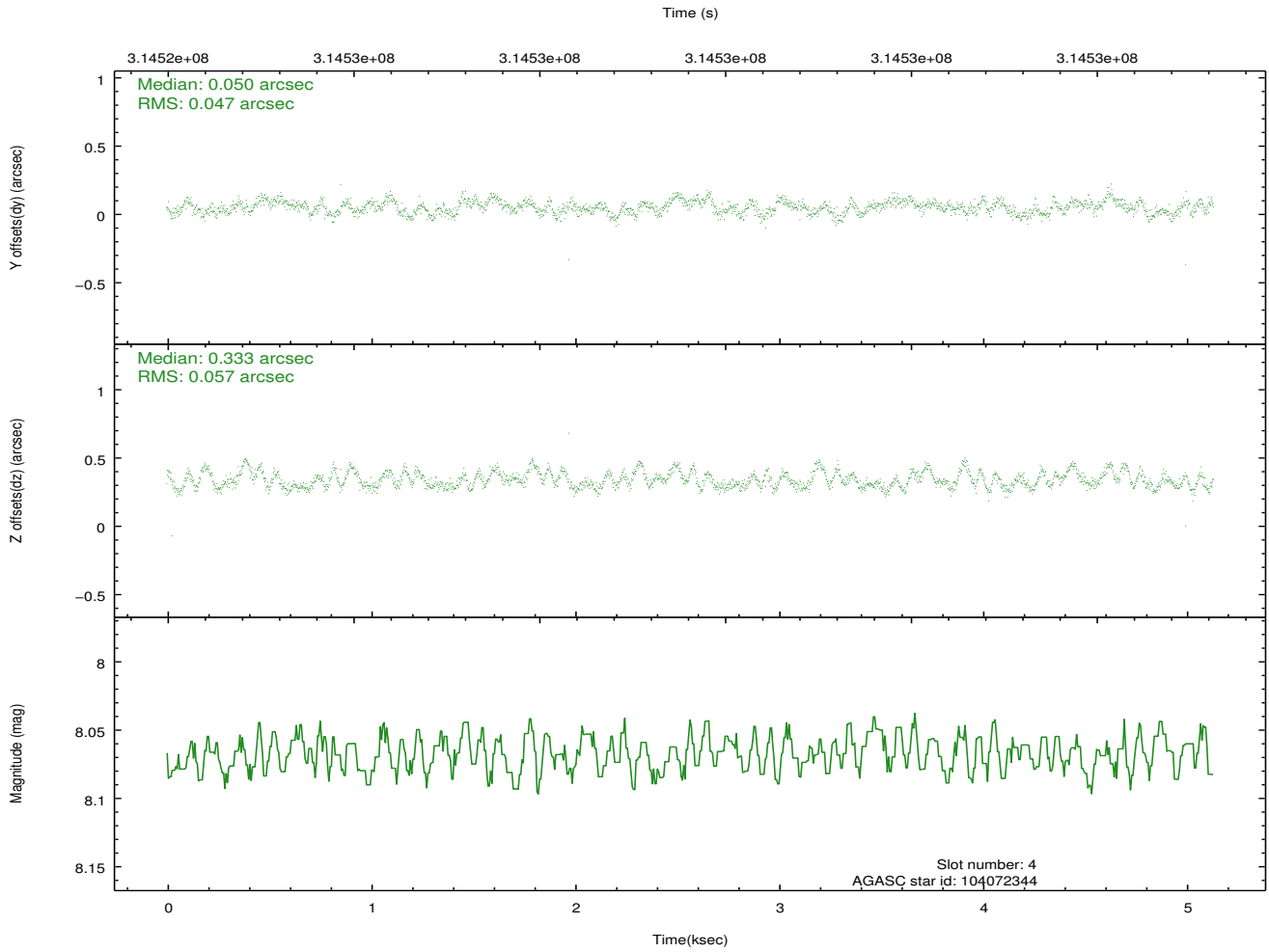
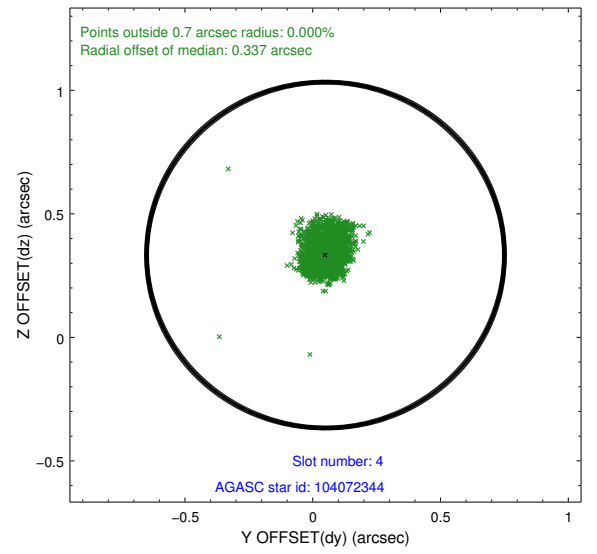
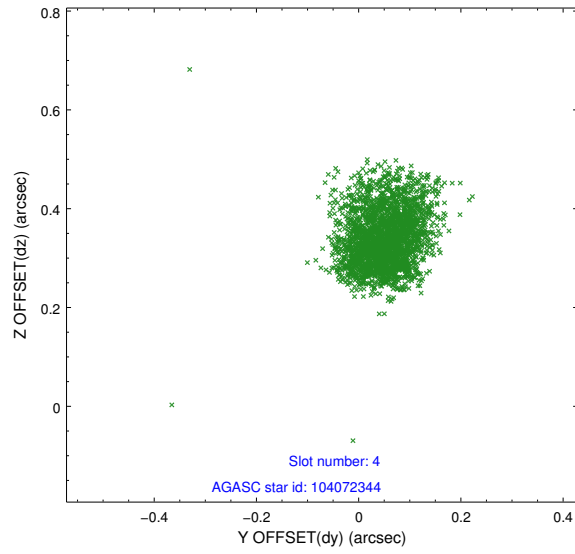
slot	status	id	mag	n_pts	med_dy	med_dz	dr1	dr2	ra	dec	mean_y	mean_z
0	FID	ACIS-I-1	7.23	1252	-0.013	0.001	0.009	0.016	0.000000	0.000000	925.96	-838.49
1	FID	ACIS-I-4	7.15	1252	0.175	0.029	0.008	0.014	0.000000	0.000000	2146.84	1060.75
2	FID	ACIS-I-5	7.22	1252	-0.260	0.040	0.007	0.011	0.000000	0.000000	-1820.77	1059.96
3	GUIDE	102906992	9.27	2503	0.153	-0.031	0.083	0.143	122.511468	9.456826	-991.14	998.42
4	GUIDE	104072344	8.07	2504	0.050	0.333	0.076	0.126	122.839940	9.289686	-1090.06	-309.66
5	GUIDE	104075400	6.76	2505	0.054	-0.201	0.072	0.121	122.574658	9.168145	-1861.02	386.19
6	GUIDE	104605080	8.27	2504	-0.096	-0.048	0.078	0.116	122.900011	9.677723	278.52	39.03
7	GUIDE	104606088	8.17	2503	-0.167	-0.062	0.064	0.097	122.693087	10.244188	1869.84	1510.57

## 2.4 Star Slots

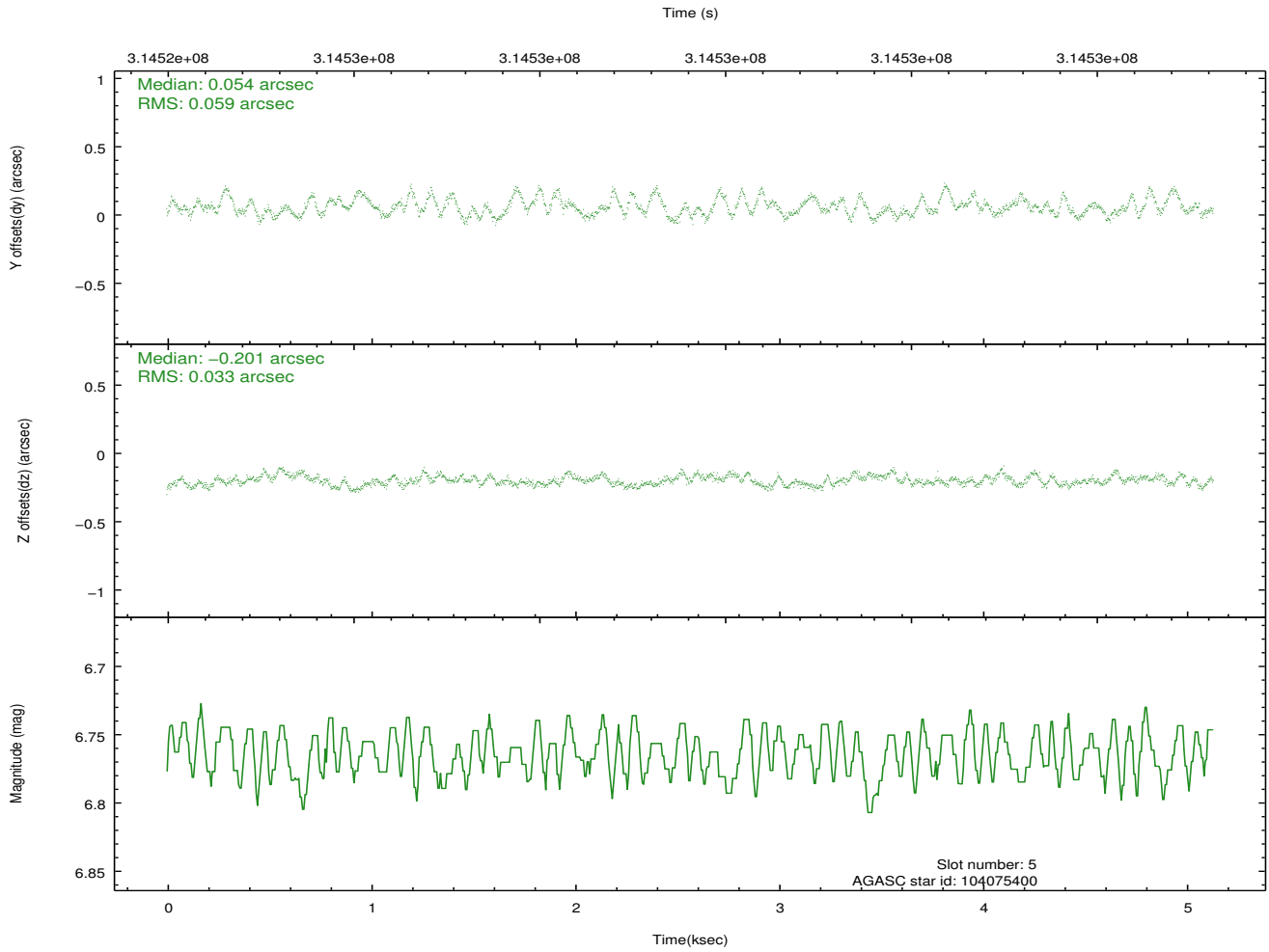
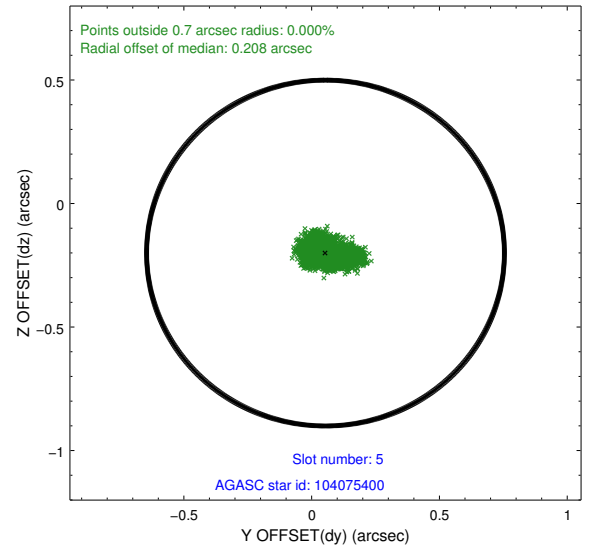
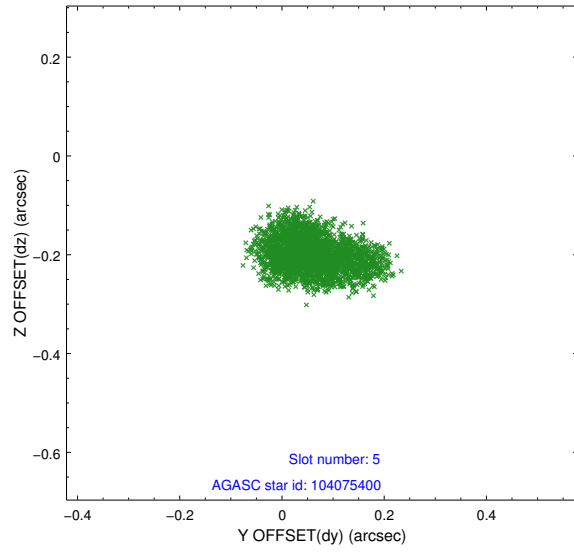
### 2.4.1 Slot 3



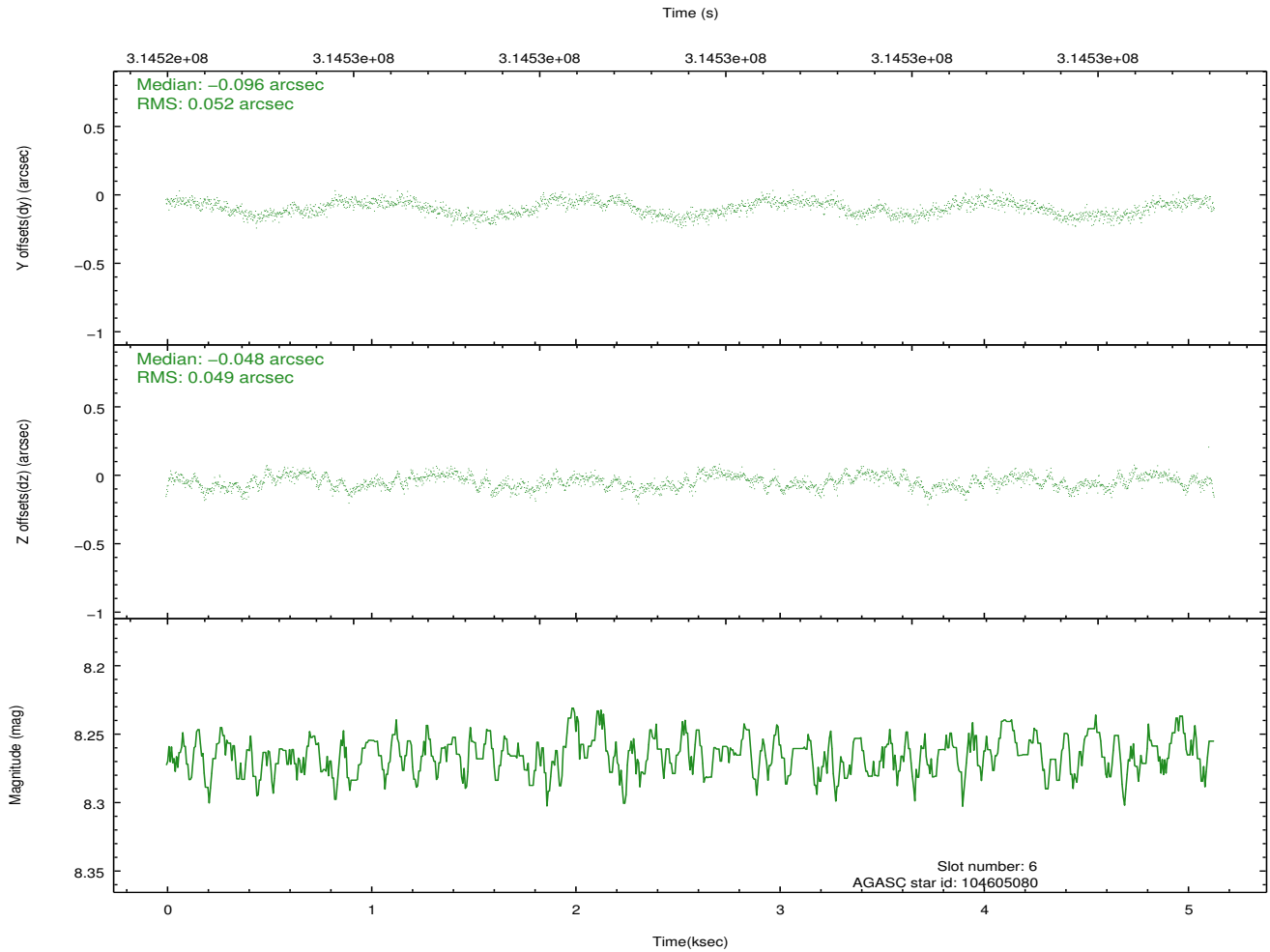
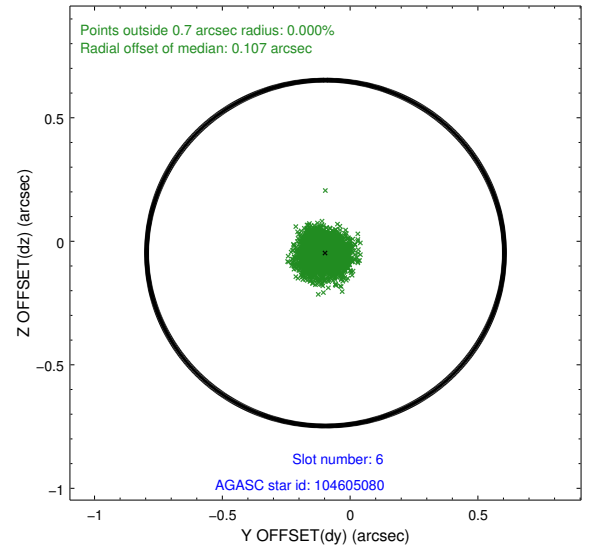
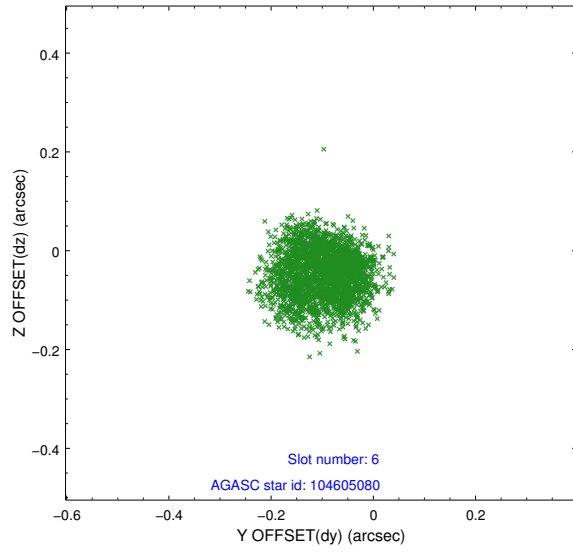
## 2.4.2 Slot 4



### 2.4.3 Slot 5

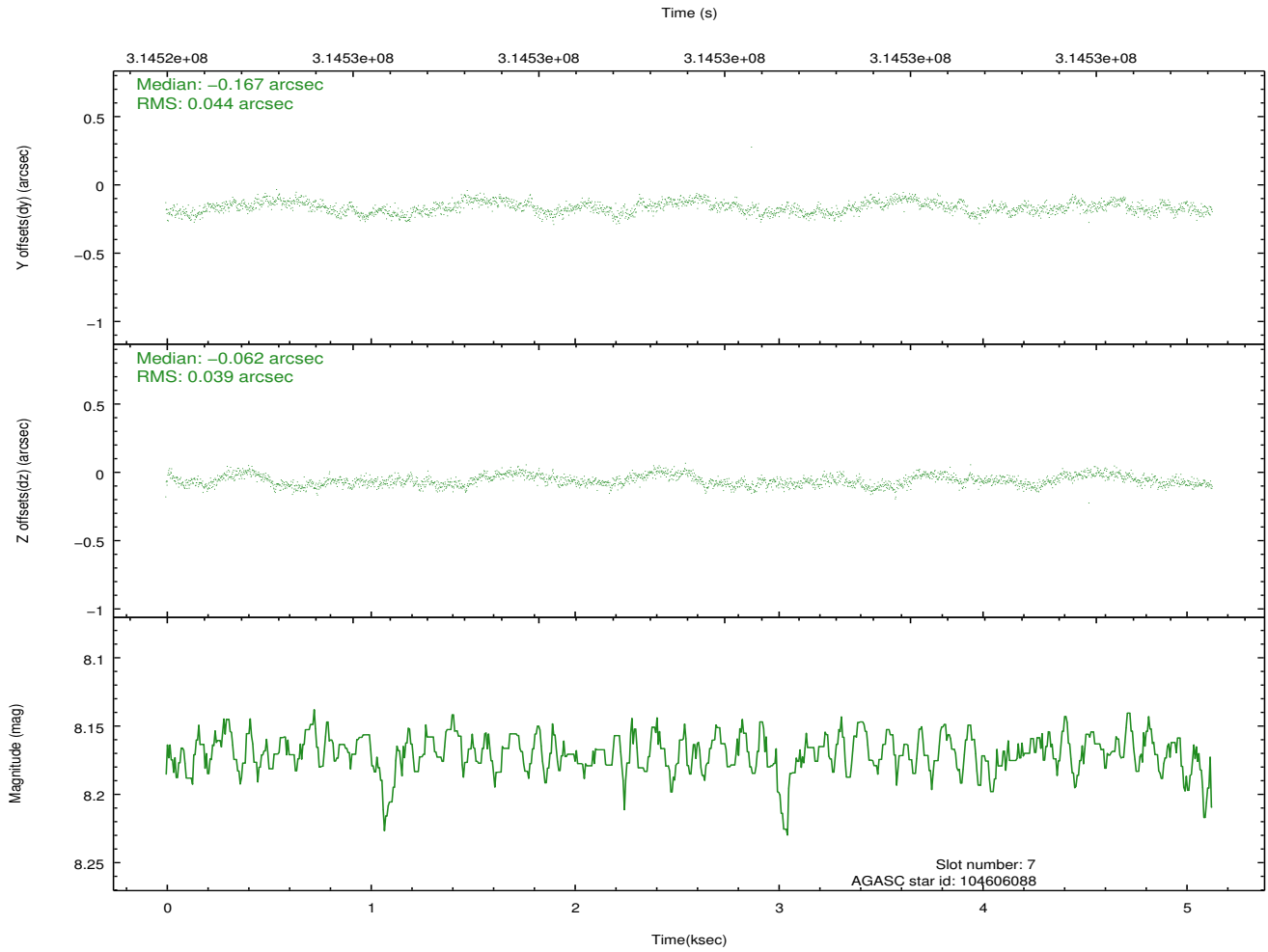
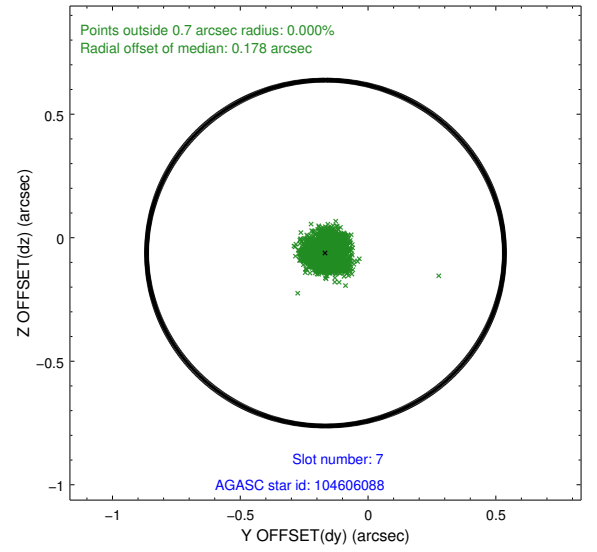
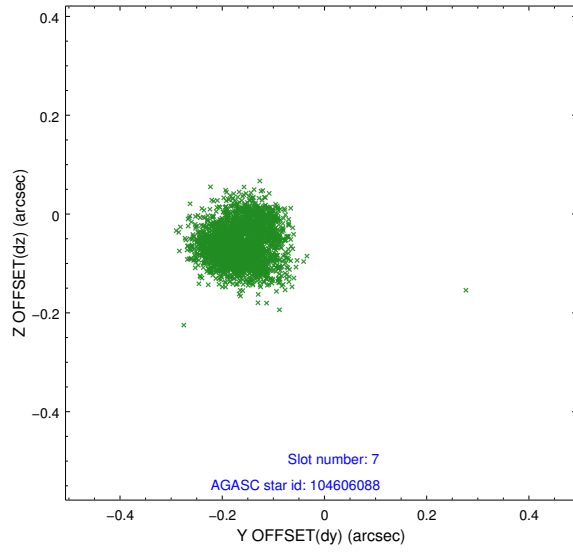


## 2.4.4 Slot 6



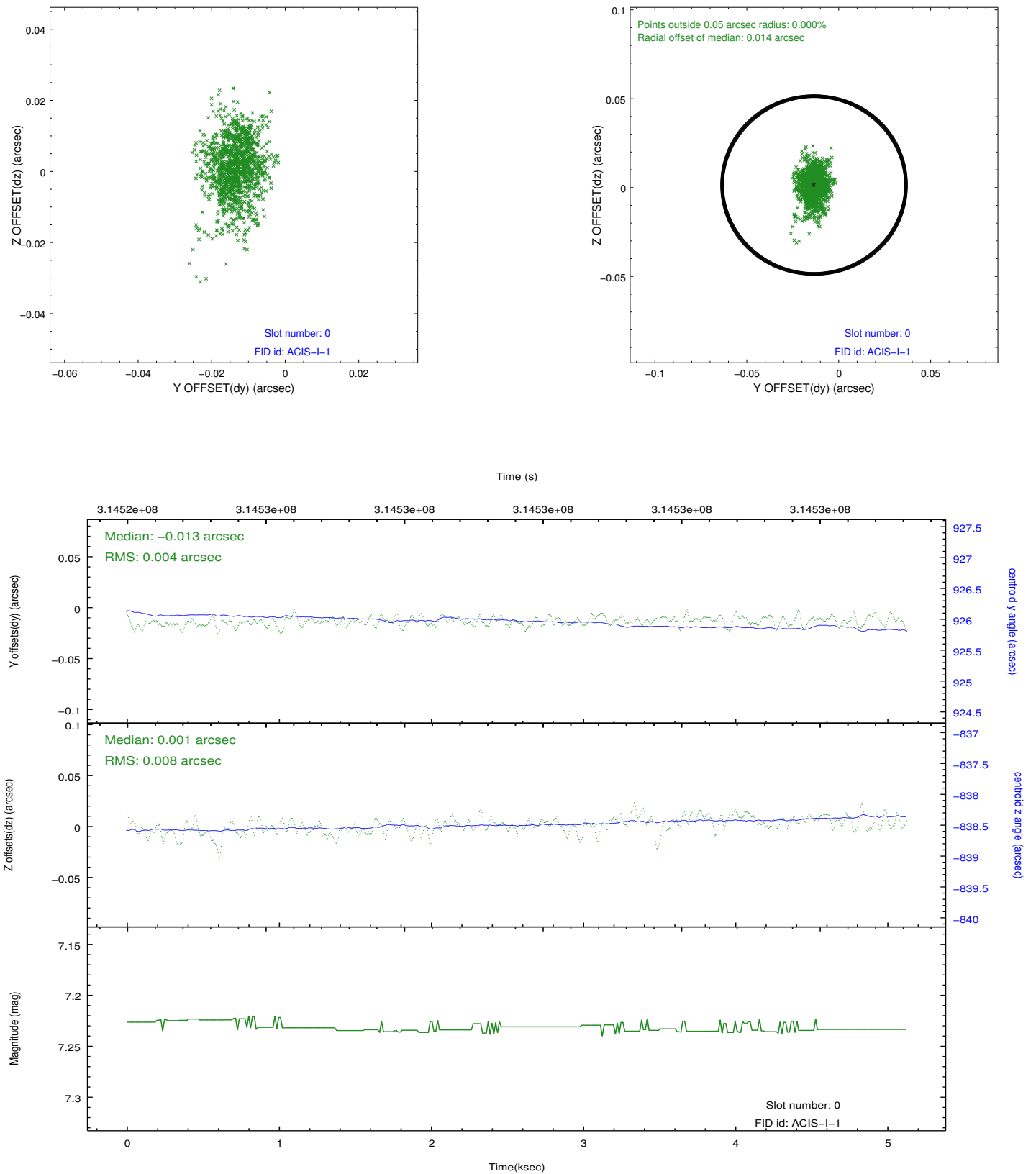


## 2.4.5 Slot 7

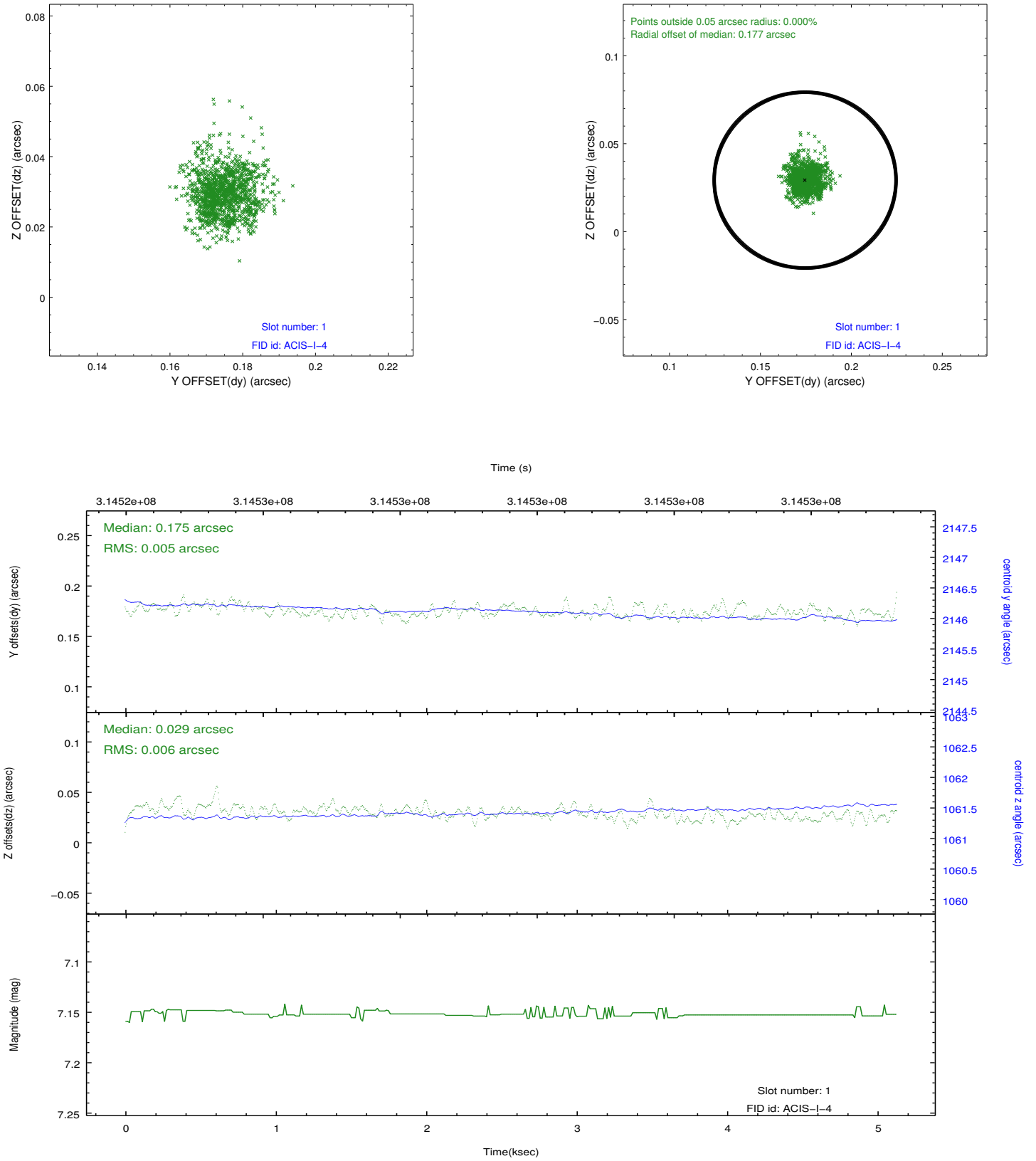


## 2.5 FID Slots

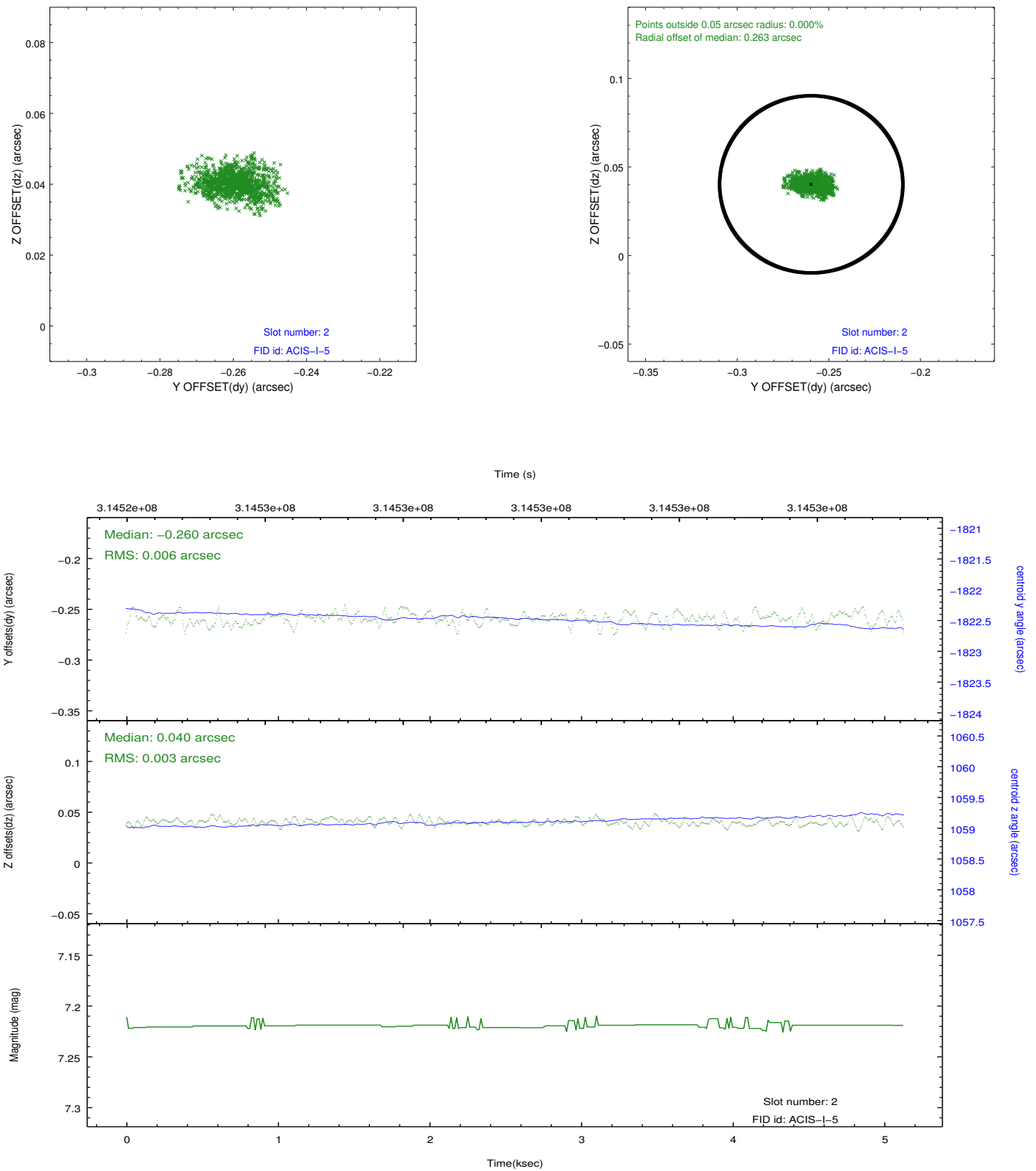
### 2.5.1 Slot 0



## 2.5.2 Slot 1



### 2.5.3 Slot 2



## A Summary

### A.1 Status

V&V Scientist	Beth Sundheim
V&V Date (YYYY-MM-DD)	2012.05.07
V&V Edition	1
V&V Disposition and Status	OK
V&V Charge Time	5.12639998

### A.2 Comments