

V&V Reference Report

L2 ASCDS Version : 8.4.4

Observation 9156 - L2 Version 2
Chandra X-Ray Center

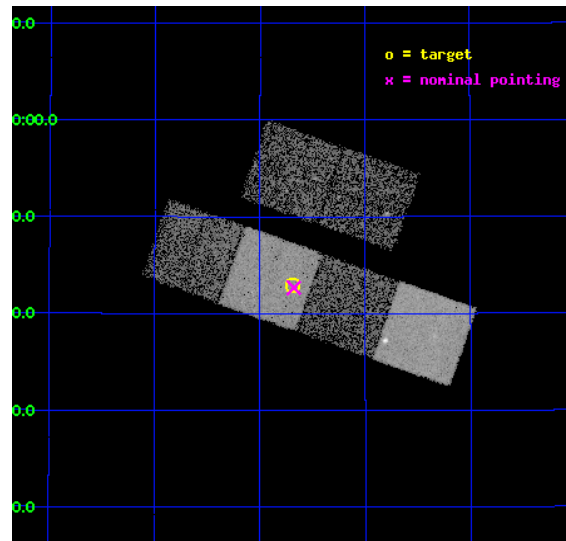
L2 Processing Date : May 9 2012

Contents

1	Front	2
2	OBI	3
2.1	OBI	3
2.1.1	Images	3
2.1.2	Bias	3
2.1.3	Parameters	4
2.1.4	Events	4
2.2	Compared Parameters	5
2.3	Aspect	6
2.4	Star Slots	9
2.4.1	Slot 3	9
2.4.2	Slot 4	10
2.4.3	Slot 5	11
2.4.4	Slot 6	12
2.4.5	Slot 7	13
2.5	FID Slots	14
2.5.1	Slot 0	14
2.5.2	Slot 1	15
2.5.3	Slot 2	16
A	Summary	17
A.1	Status	17
A.2	Comments	17

1 Front

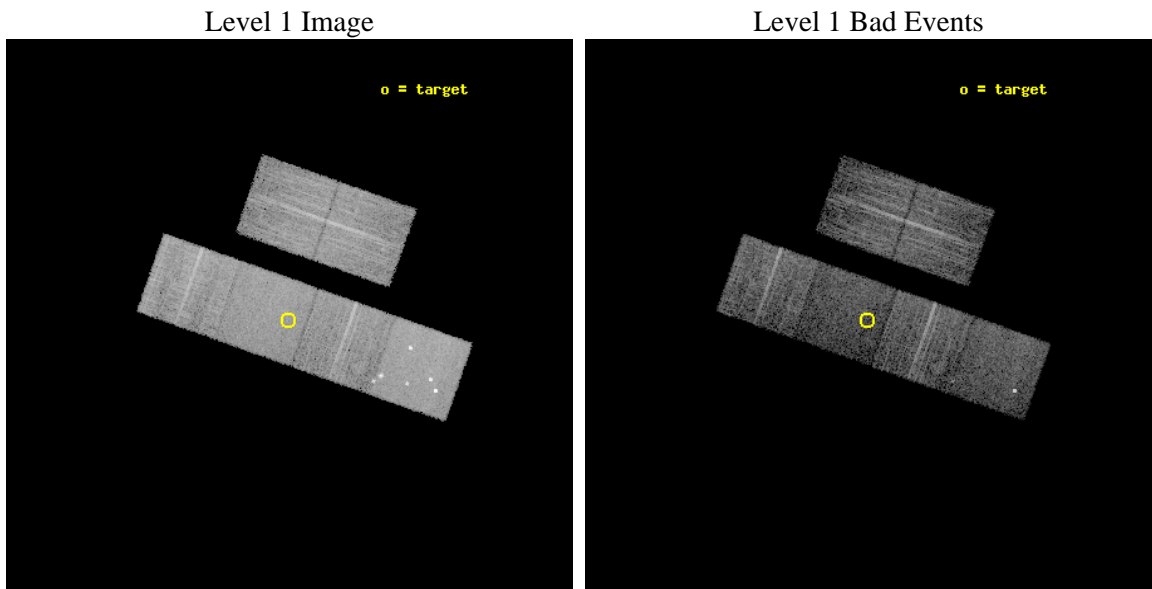
seq_num	701598	Sequence number
obs_id	9156	Observation id
title	Chandra ACIS Snapshots of the Brightest Radio-Loud Broad Absorption Line Quasars in the SDSS	Proposal title
observer	Professor Gordon Garmire	Principal investigator
object	SDSS J085641.58+424254.1	Source name
dtcycle	0	
cycle	P	events from which exps? Prim/Second/Both
ra_targ	134.173333	Observer's specified target RA [deg]
dec_targ	42.715	Observer's specified target Dec [deg]
ra_nom	134.16926290436	Nominal RA [deg]
dec_nom	42.711292871546	Nominal Dec [deg]
roll_nom	199.39300191722	Nominal Roll [deg]
revision	2	Processing version of data
ontime	6043.8083627224	Sum of GTIs [s]
livetime	5967.2780220891	Livetime [s]
ontime2	6043.8494027257	Sum of GTIs [s]
ontime3	6043.6852427125	Sum of GTIs [s]
ontime5	6043.7673227191	Sum of GTIs [s]
ontime6	6043.7262827158	Sum of GTIs [s]
ontime7	6043.8083627224	Sum of GTIs [s]
ontime8	6040.4031923413	Sum of GTIs [s]
l2events	73181	Number of level 2 events



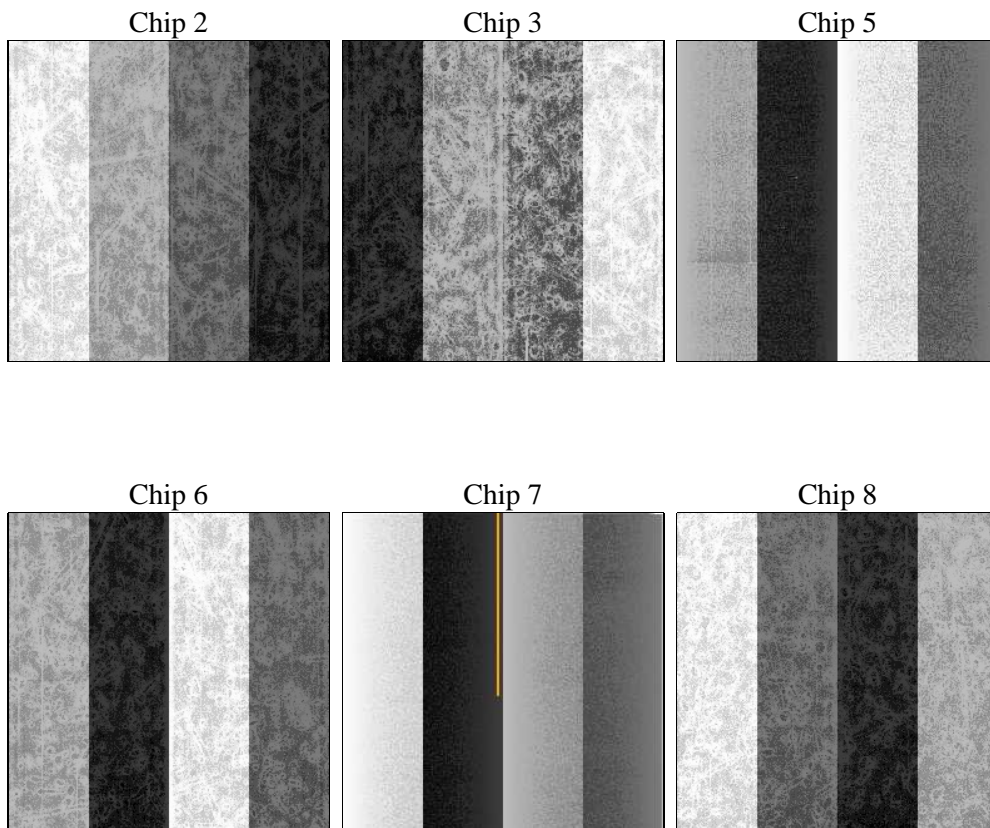
2 OBI

2.1 OBI

2.1.1 Images



2.1.2 Bias



2.1.3 Parameters

obi_num	0	Obi number	sched_exp_time	6000.000000	[s] Scheduled observation exposure time
ascdsver	8.4.4	Processing system revision	ontime	6043.8083627224	Sum of GTIs [s]
caldsver	4.4.9	 	ontime2	6043.8494027257	Sum of GTIs [s]
date	2012-05-09T18:07:38	Date and time of file creation	ontime3	6043.6852427125	Sum of GTIs [s]
revision	2	Processing version of data	ontime5	6043.7673227191	Sum of GTIs [s]
			ontime6	6043.7262827158	Sum of GTIs [s]
			ontime7	6043.8083627224	Sum of GTIs [s]
			ontime8	6040.4031923413	Sum of GTIs [s]
			l1events	331077	Number of level 1 events

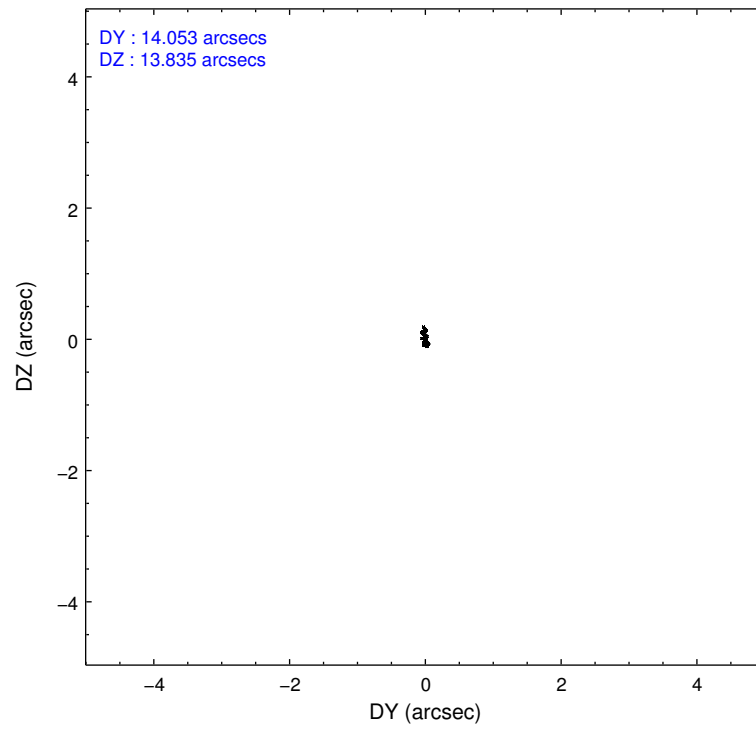
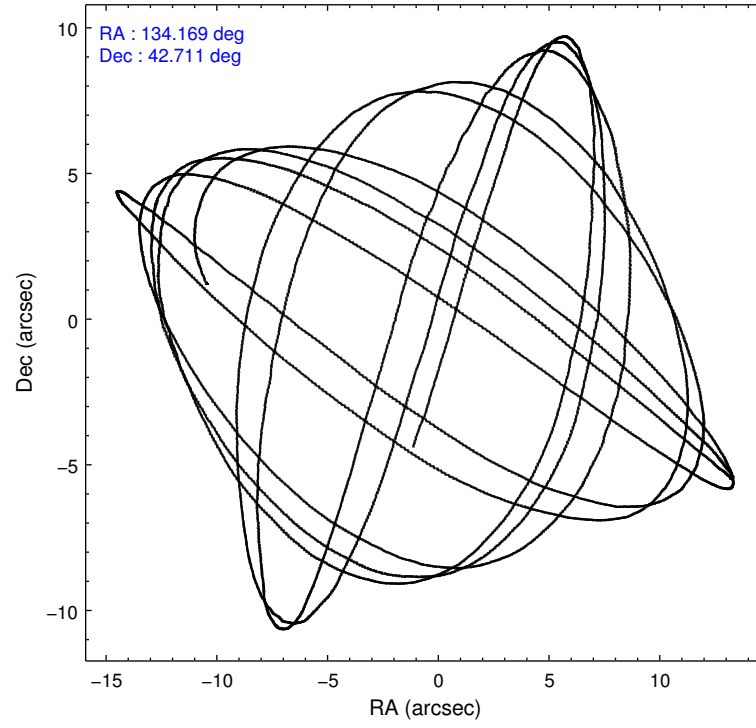
2.1.4 Events

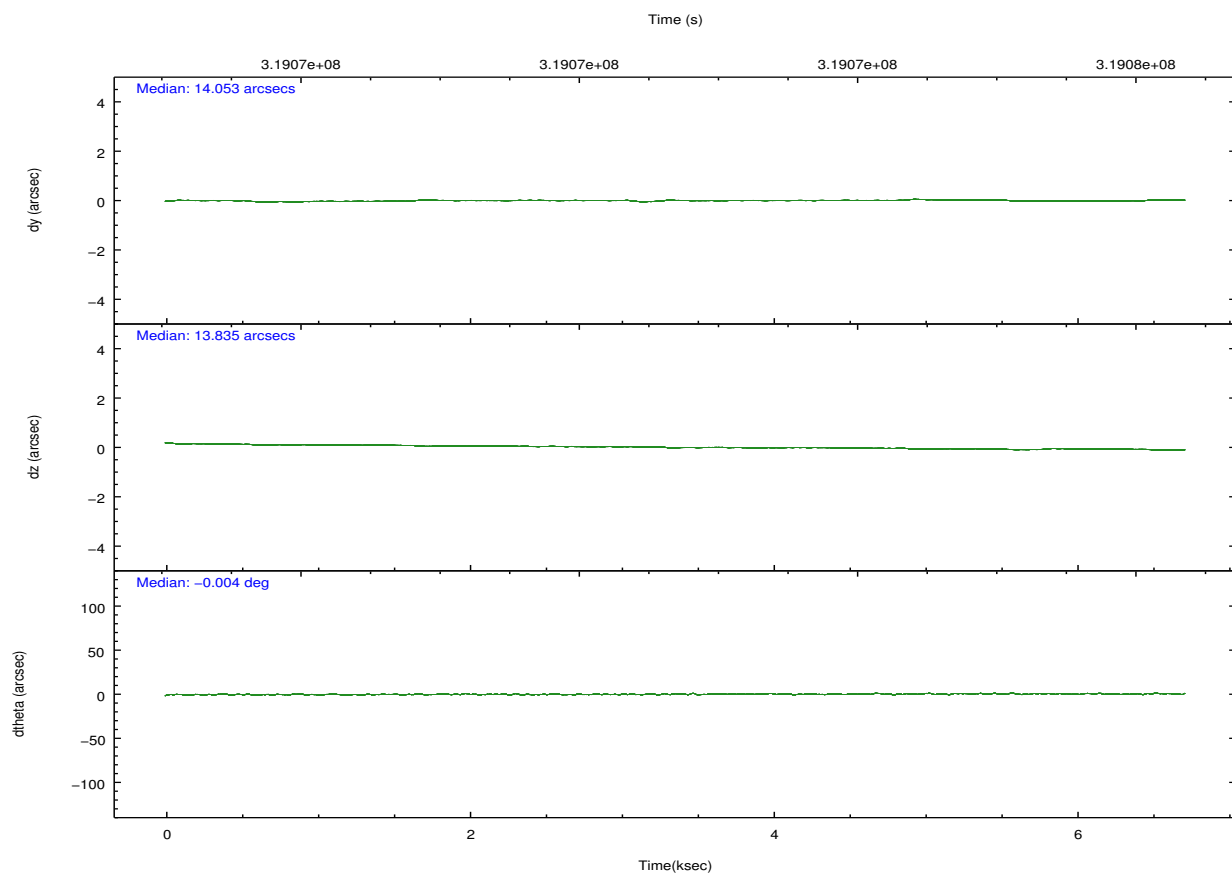
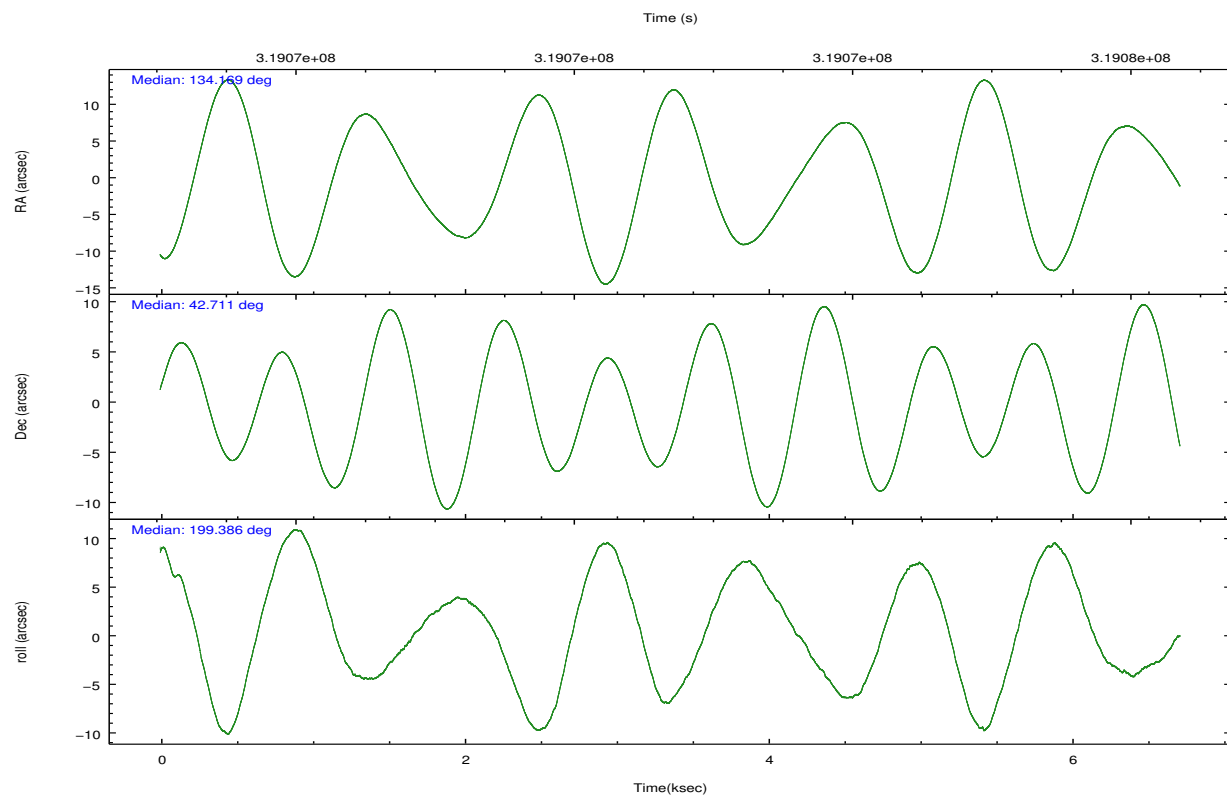
	ccd 2	ccd 3	ccd 5	ccd 6	ccd 7	ccd 8		ccd 2	ccd 3	ccd 5	ccd 6	ccd 7	ccd 8
level 1 events	49680	47097	73431	46897	53852	60120	grade 0 events	1799	1662	7753	1751	2333	4085
rejected events	44946	42490	34689	41876	29120	45431		3%	3%	10%	3%	4%	6%
rejected %	90%	90%	47%	89%	54%	75%	grade 1 events	20	38	257	31	70	36
								0%	0%	0%	0%	0%	0%
							grade 2 events	1084	982	10519	1078	5031	3600
								2%	2%	14%	2%	9%	5%
							grade 3 events	508	533	1679	531	2295	1495
								1%	1%	2%	1%	4%	2%
							grade 4 events	478	537	1384	567	2195	1435
								0%	1%	1%	1%	4%	2%
							grade 5 events	1681	1883	5457	1834	5654	2780
								3%	3%	7%	3%	10%	4%
							grade 6 events	866	895	17429	1098	12888	4075
								1%	1%	23%	2%	23%	6%
							grade 7 events	43244	40567	28953	40007	23386	42614
								87%	86%	39%	85%	43%	70%

2.2 Compared Parameters

Parameter	Planned	Actual	Parameter	Planned	Actual
Instrument	ACIS	ACIS	Obspar format version number	7	7
Detector	ACIS-235678	ACIS-235678	Obspar file type	PREDICTED	ACTUAL
Grating	NONE	NONE	Obspar update status	NONE	UPDATED
Data mode	VFAINT	VFAINT	CCD I0 on	N	N
Observation mode	POINTING	POINTING	CCD I1 on	N	N
[deg] Pointing RA	134.193028	134.1692629043622	CCD I2 on	O1	Y
[deg] Pointing Dec	42.732221	42.71129287154629	CCD I3 on	O2	Y
[deg] Pointing Roll	199.220238	199.3930019172218	CCD S0 on	N	N
[mm] SIM focus pos	-0.684267	-0.6828225247311905	CCD S1 on	O3	Y
[mm] SIM defocus	0	0.001444936568705701	CCD S2 on	Y	Y
[mm] SIM translation stage pos	-190.132523	-190.1425803651734	CCD S3 on	Y	Y
[mm] SIM translation stage offset	0	0.01005778216563158	CCD S4 on	Y	Y
[s] Observation start time (MET)	319070047.184000	319068775.0743	CCD S5 on	N	N
Observation start date	2008-02-10T22:33:02	2008-02-10T22:12:55	Number of optional ACIS chips dropped	0	0
[s] Observation end time (MET)	319076047.184000	319077163.67471	On-chip summing requested	N	N
Observation end date	2008-02-11T00:13:02	2008-02-11T00:32:43	Subarray requested	NONE	NONE
Read mode	TIMED	TIMED	Alternating exposures requested	N	N
			[s] Primary exposure time	0.000000	3.2

2.3 Aspect



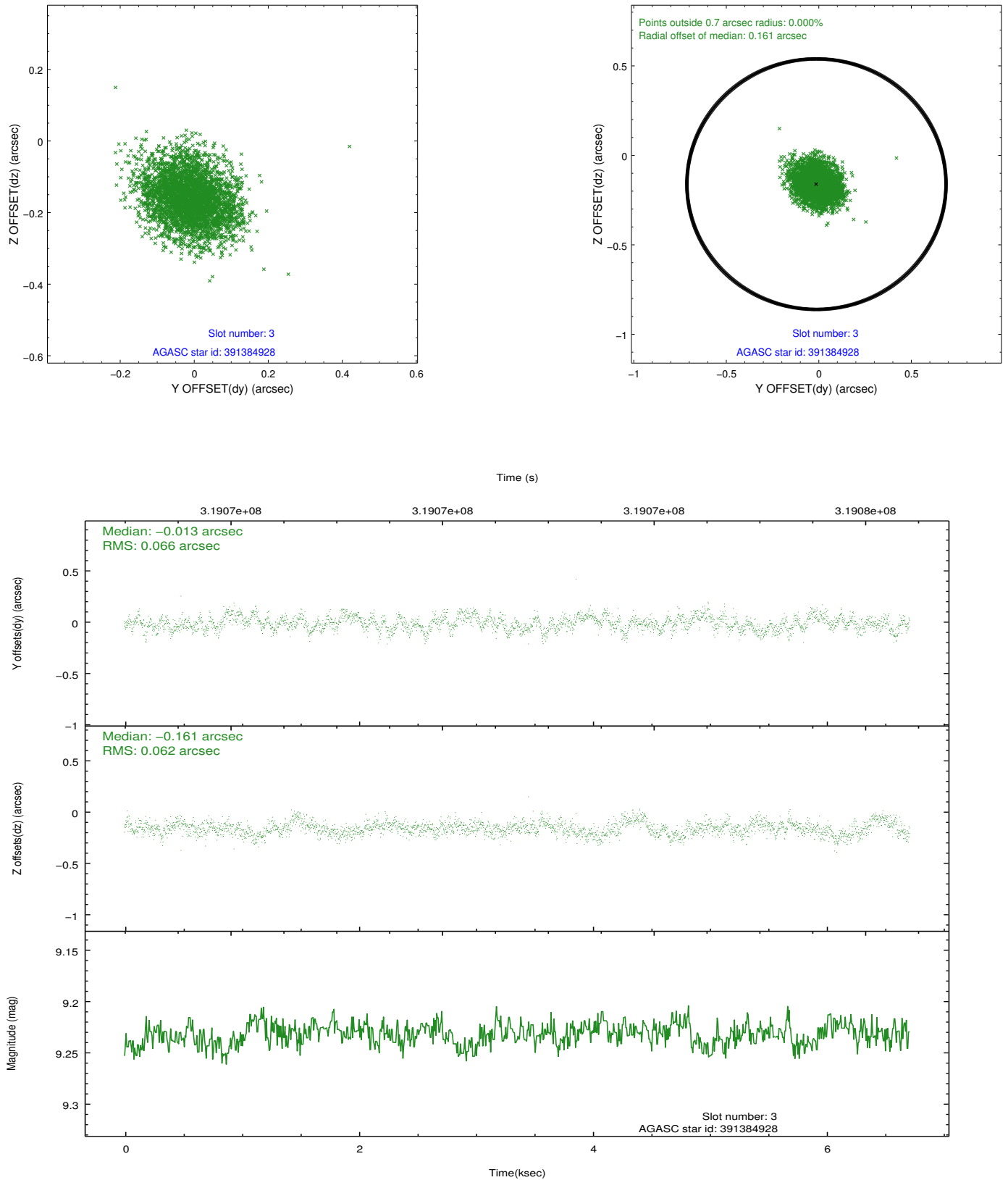


Slot Statistics

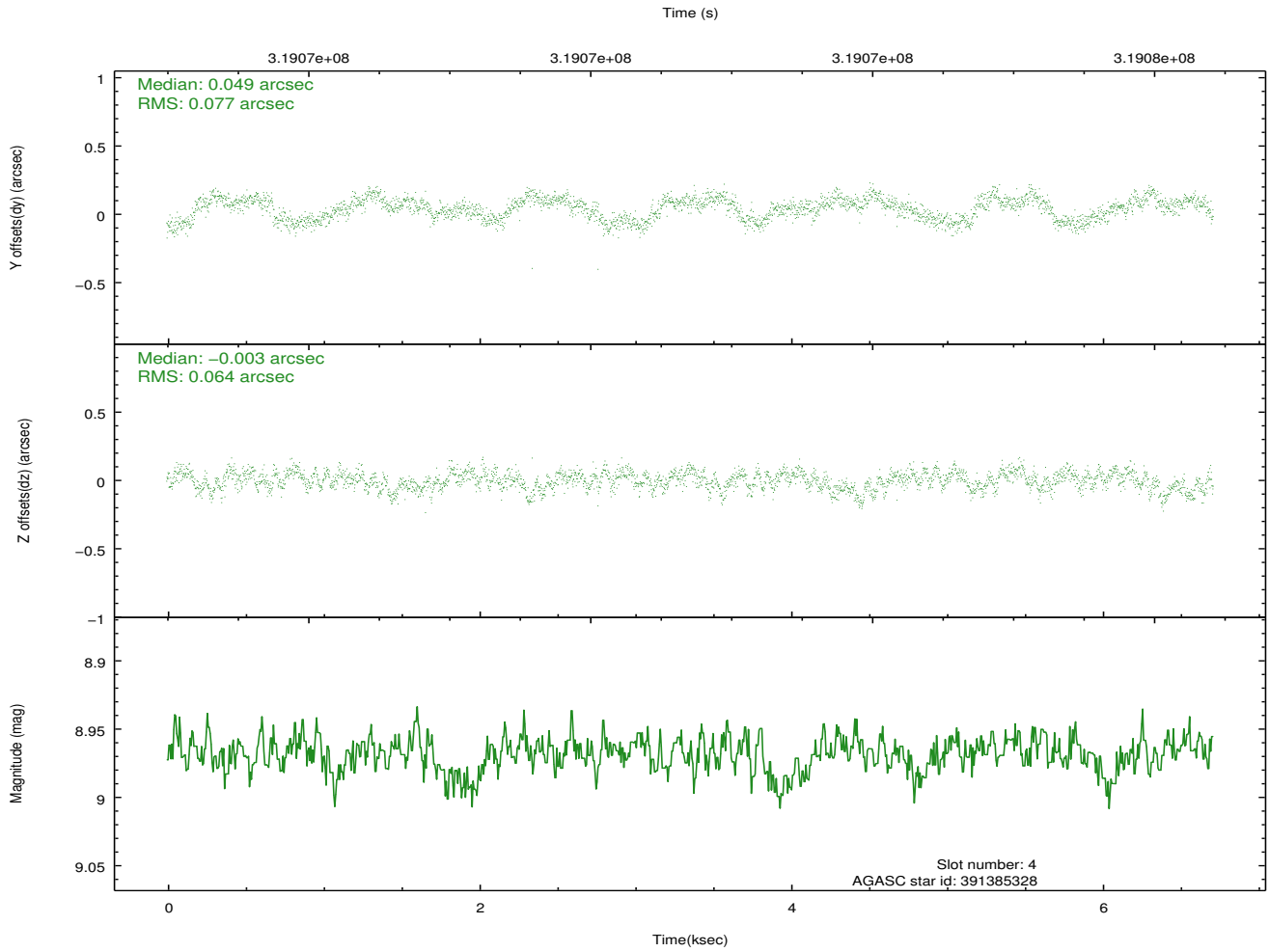
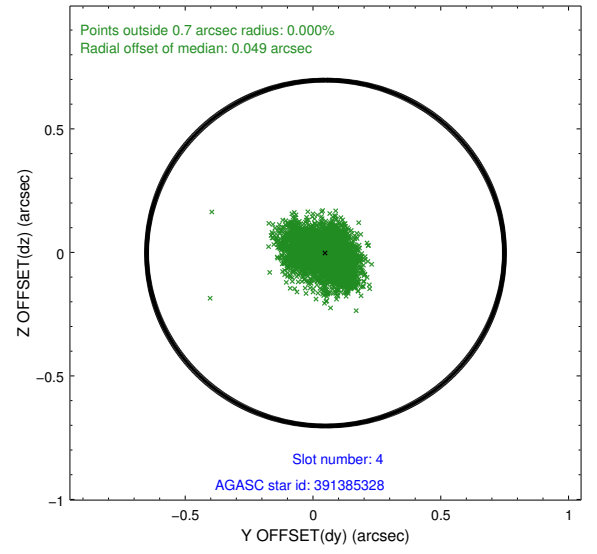
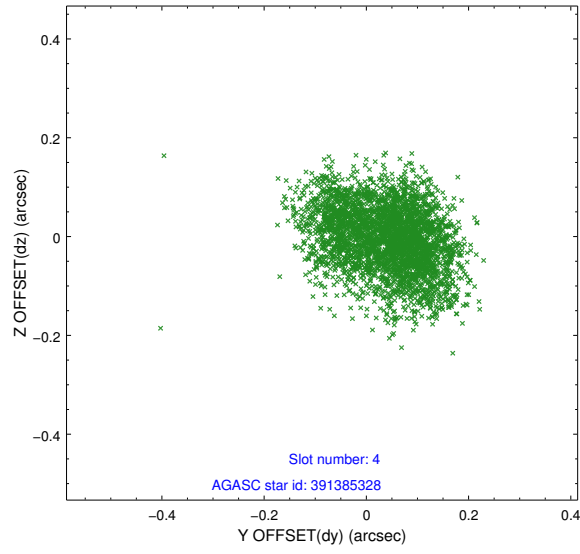
slot	status	id	mag	n_pts	med_dy	med_dz	dr1	dr2	ra	dec	mean_y	mean_z
0	FID	ACIS-S-2	7.10	1638	-0.057	-0.058	0.007	0.011	0.000000	0.000000	-767.05	-1735.20
1	FID	ACIS-S-4	7.19	1638	0.182	0.043	0.005	0.010	0.000000	0.000000	2146.07	172.48
2	FID	ACIS-S-5	7.23	1636	-0.157	0.024	0.007	0.012	0.000000	0.000000	-1818.88	167.13
3	GUIDE	391384928	9.23	3274	-0.013	-0.161	0.097	0.155	135.009483	42.367821	-1621.33	1944.35
4	GUIDE	391385328	8.97	3274	0.049	-0.003	0.108	0.169	134.362224	42.399196	-30.41	1280.92
5	GUIDE	391774856	9.33	3273	-0.015	-0.074	0.077	0.125	135.067336	42.528890	-1953.37	1444.62
6	GUIDE	391776208	8.89	3271	0.003	0.053	0.078	0.127	133.727962	42.960276	885.46	-1180.62
7	GUIDE	391781504	9.44	3275	-0.019	0.185	0.126	0.202	134.776491	43.425056	-2262.60	-1857.92

2.4 Star Slots

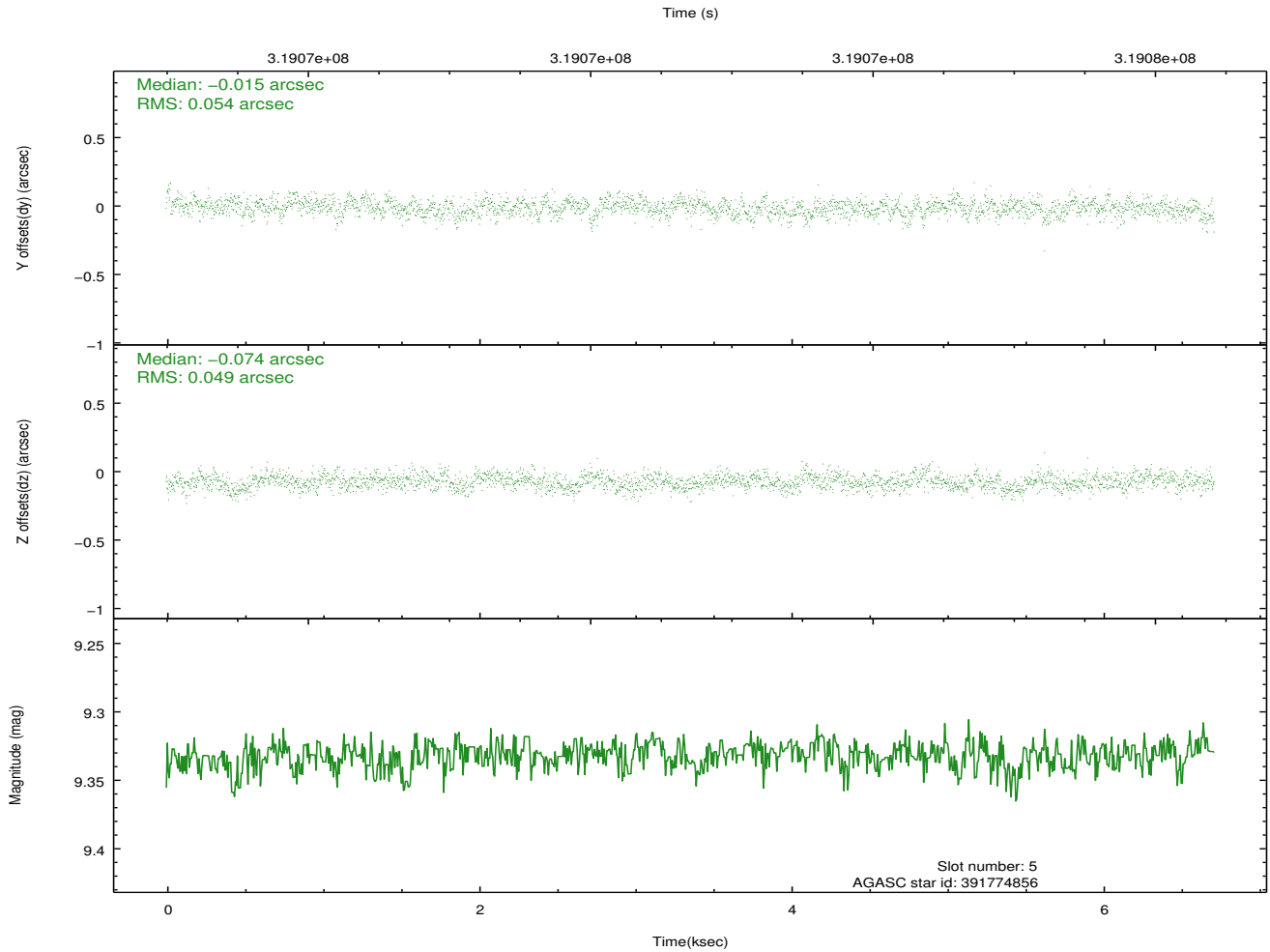
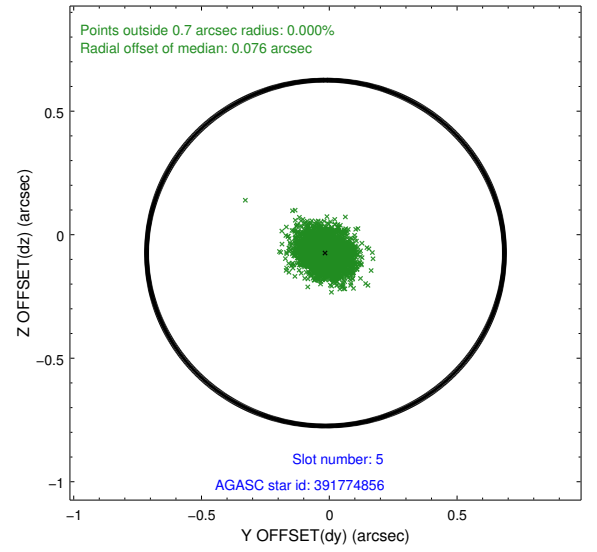
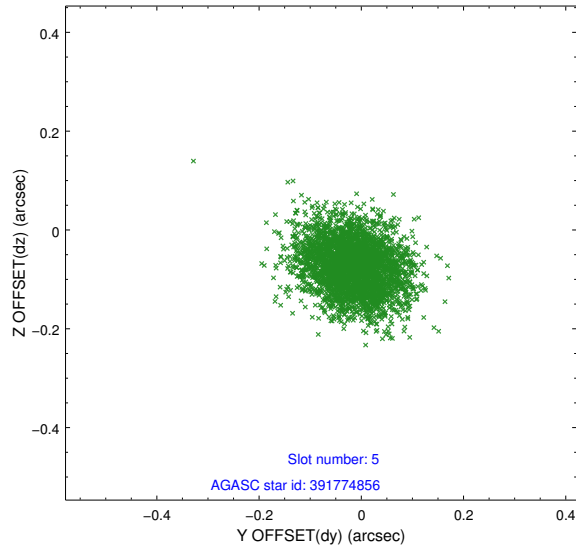
2.4.1 Slot 3



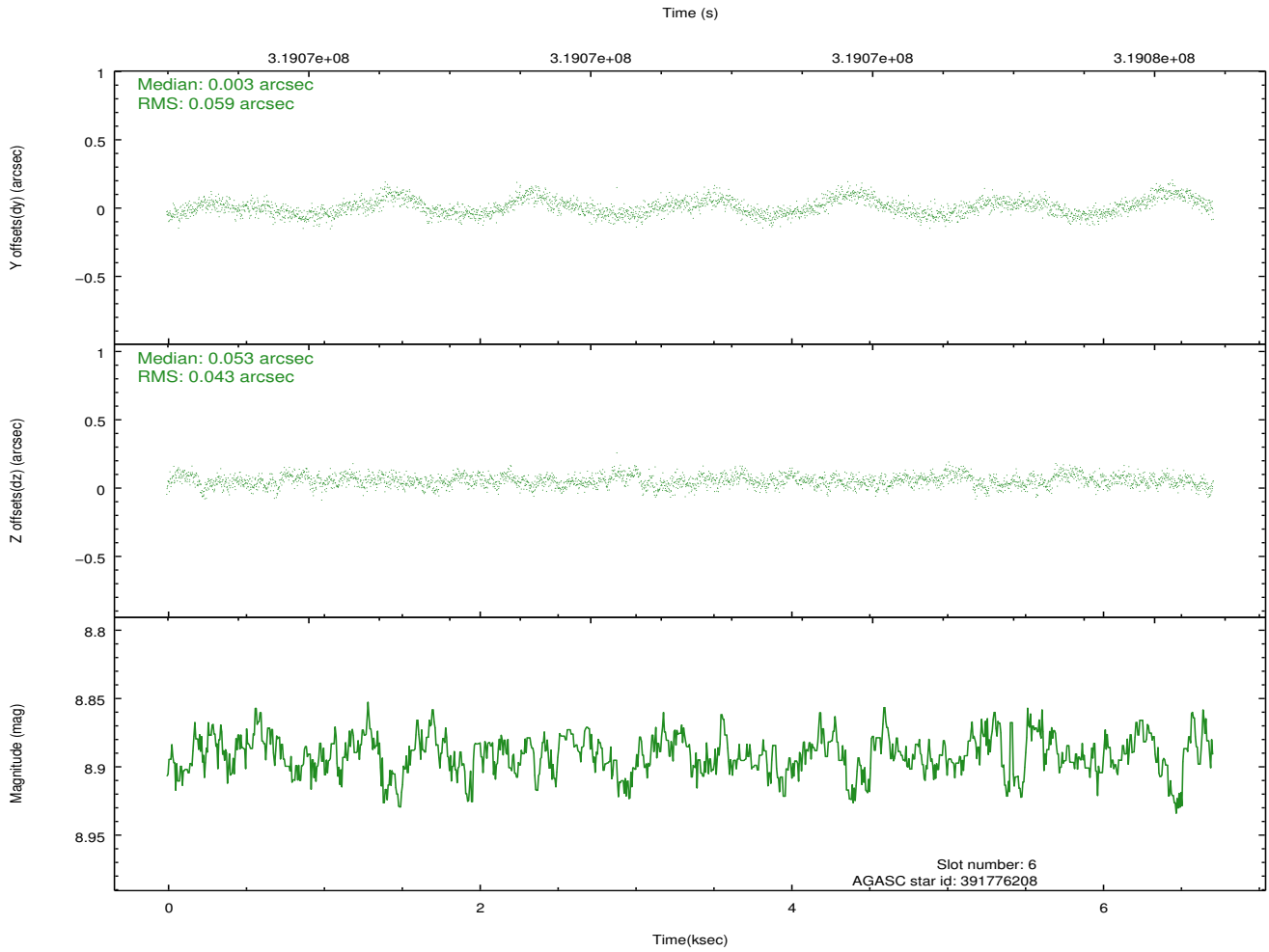
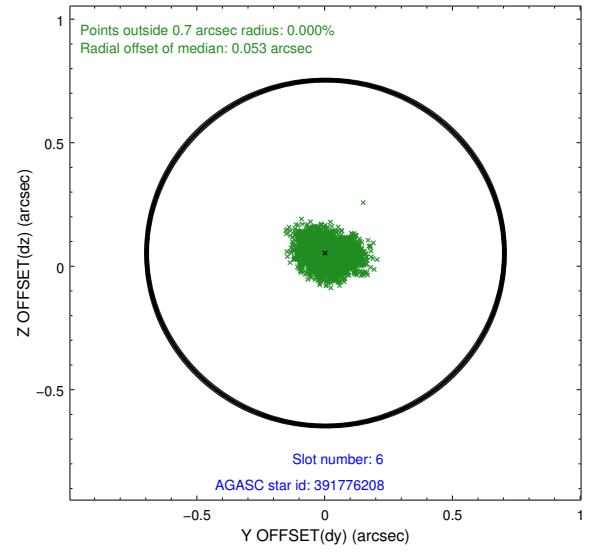
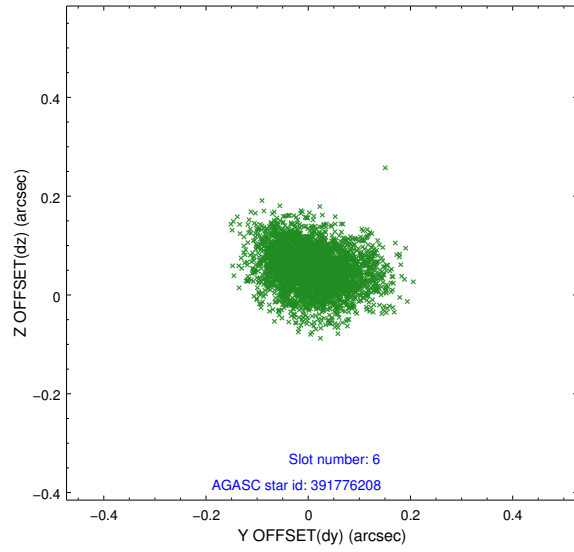
2.4.2 Slot 4



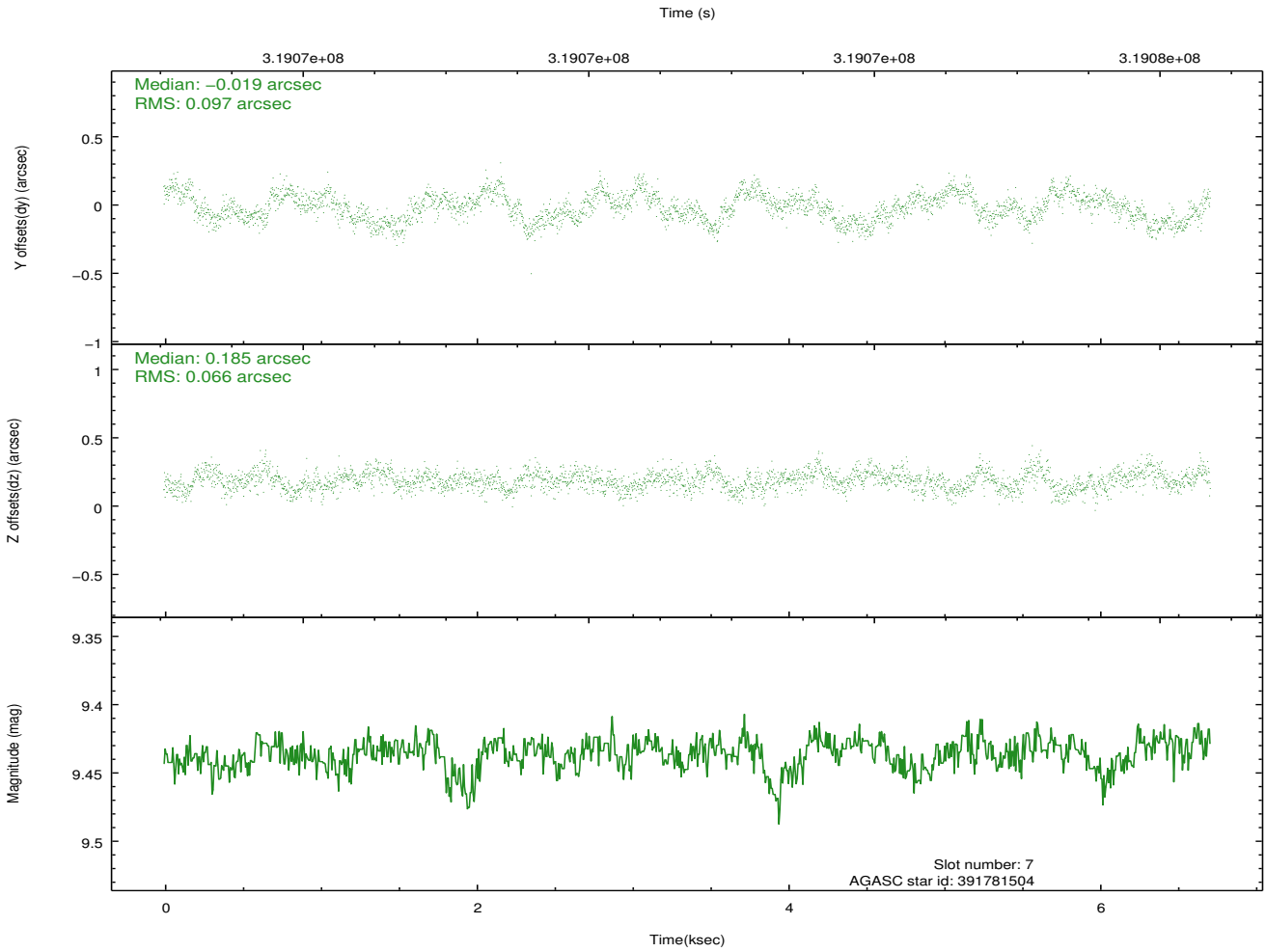
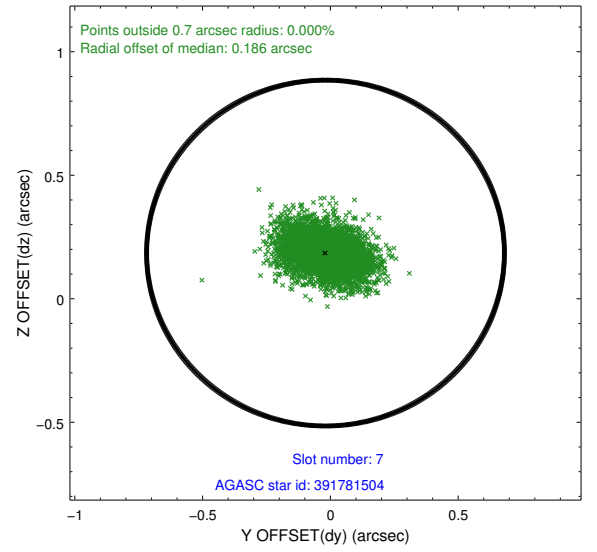
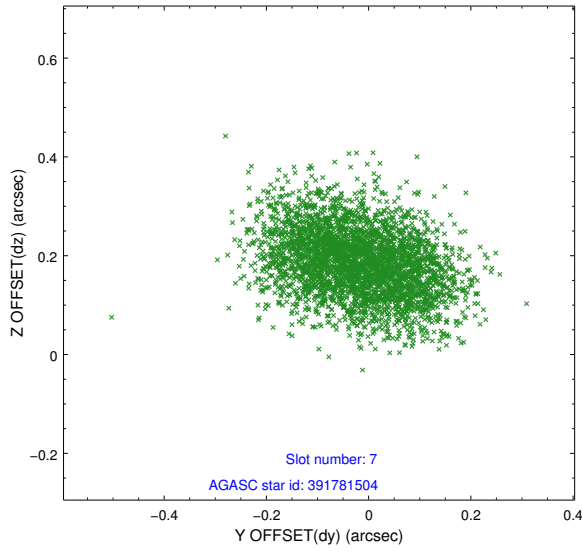
2.4.3 Slot 5



2.4.4 Slot 6

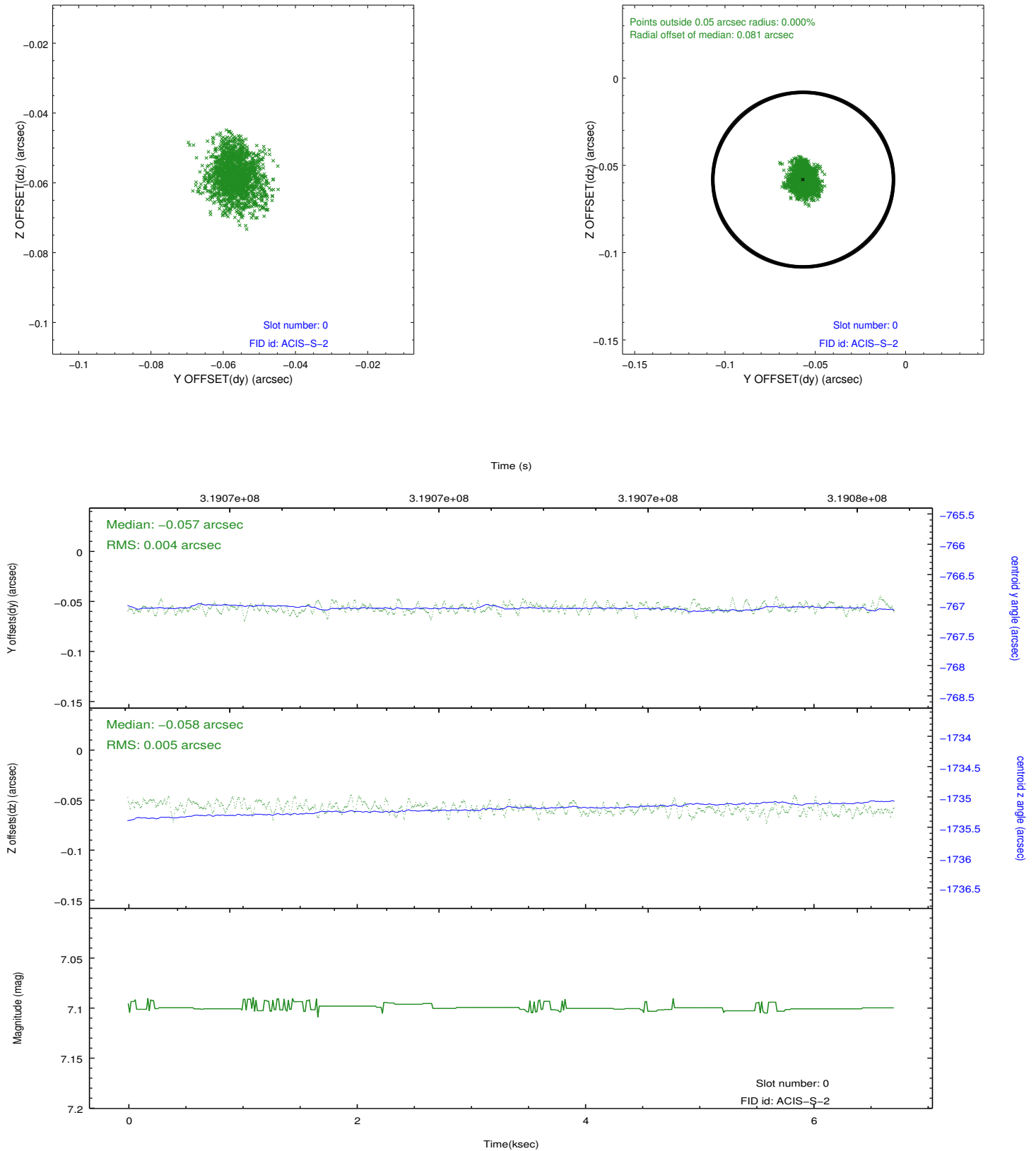


2.4.5 Slot 7

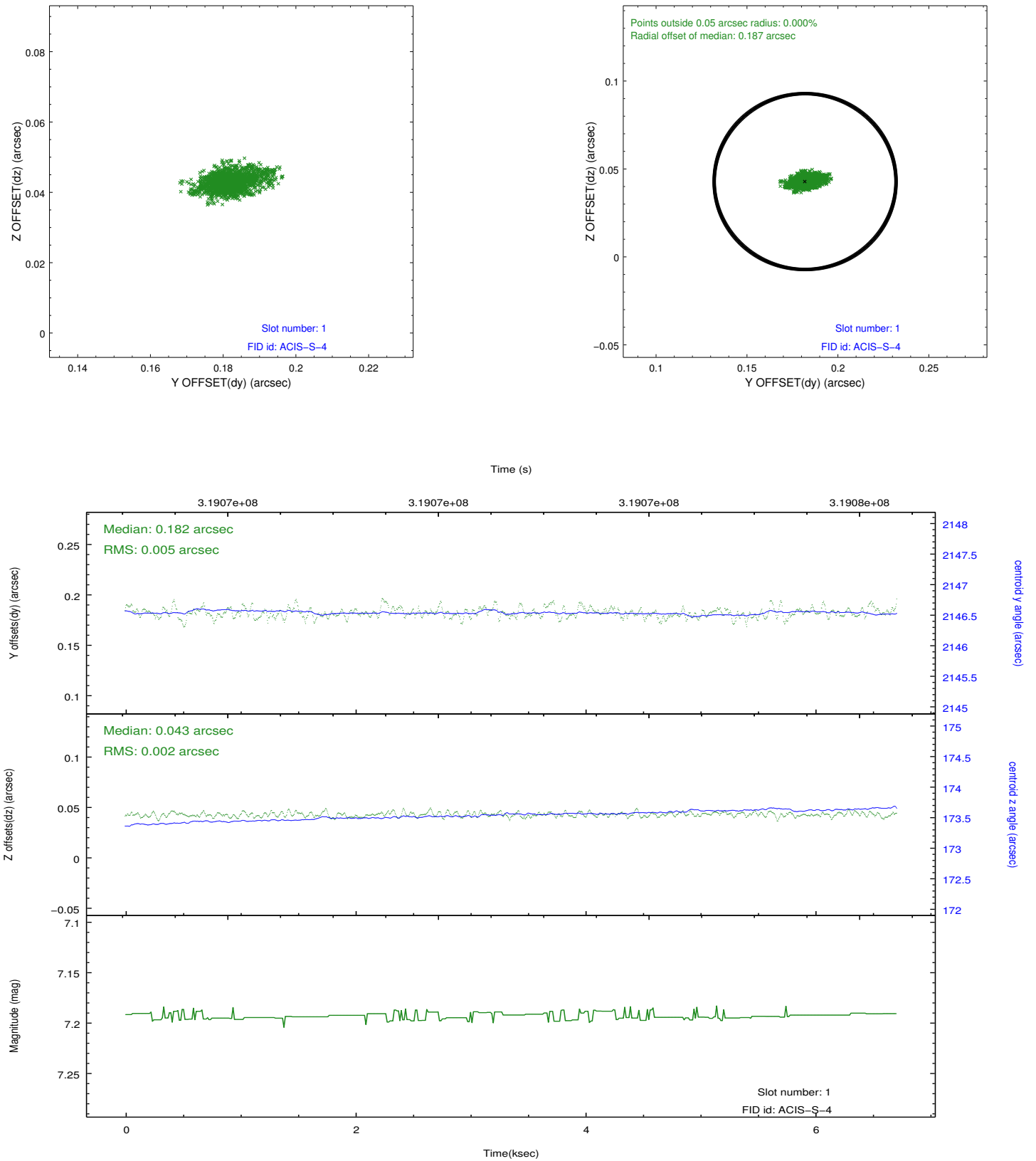


2.5 FID Slots

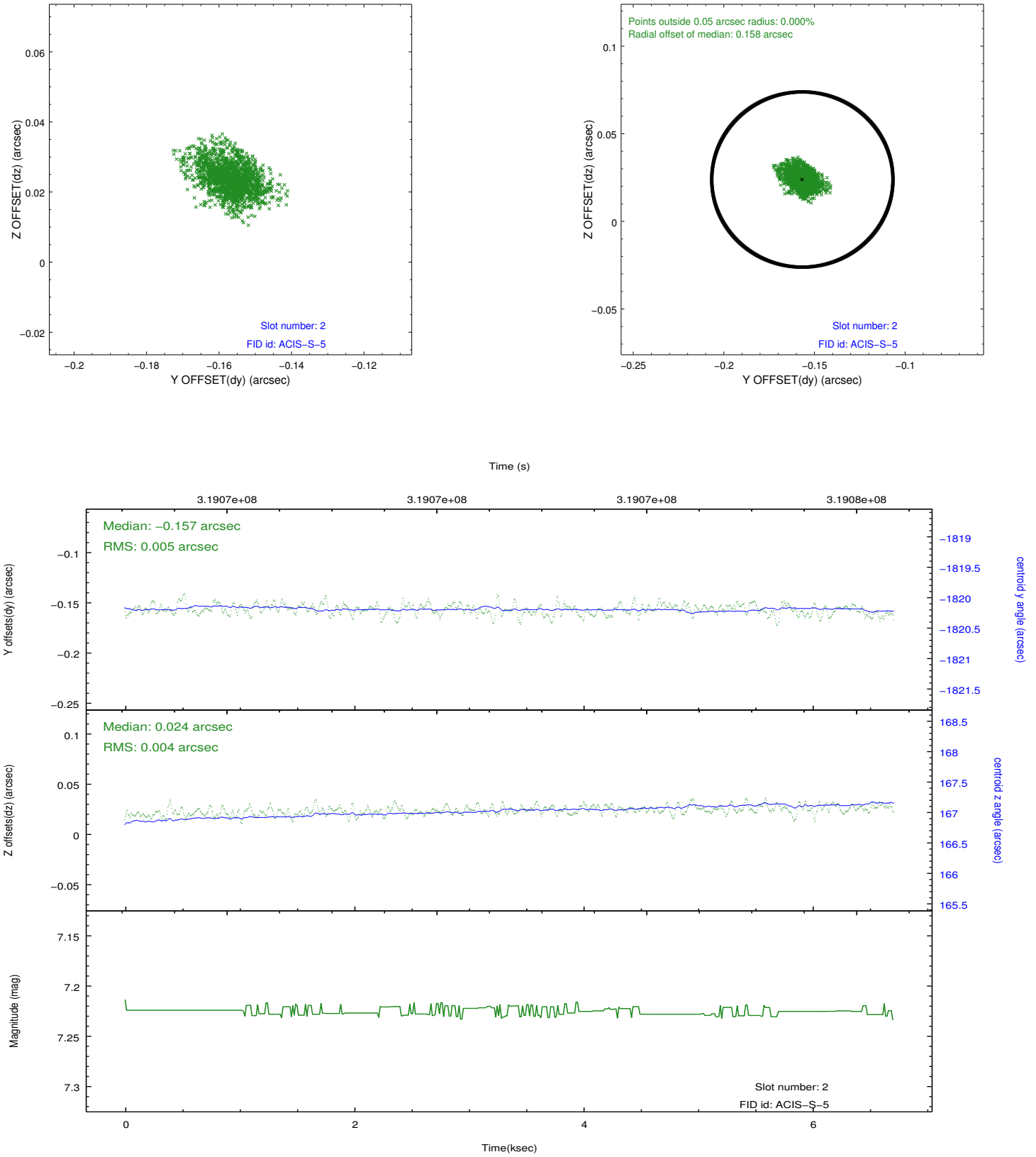
2.5.1 Slot 0



2.5.2 Slot 1



2.5.3 Slot 2



A Summary

A.1 Status

V&V Scientist	Jen Lauer
V&V Date (YYYY-MM-DD)	2012.05.11
V&V Edition	1
V&V Disposition and Status	OK
V&V Charge Time	6.04479997

A.2 Comments