

V&V Reference Report

L2 ASCDS Version : 8.4.4

Observation 9559 - L2 Version 2
Chandra X-Ray Center

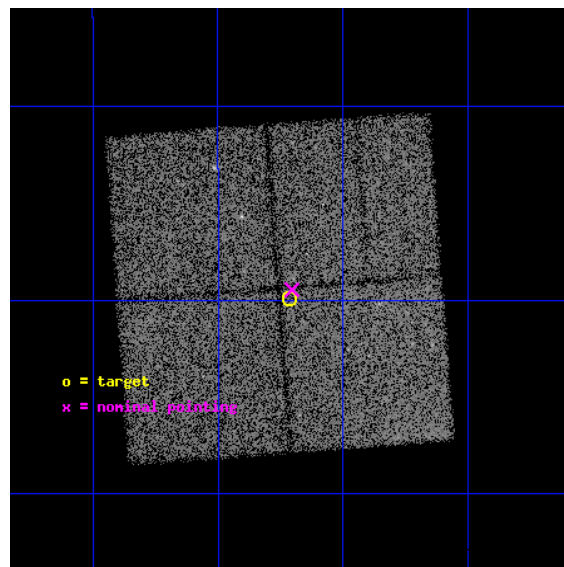
L2 Processing Date : May 14 2012

Contents

1	Front	2
2	OBI	3
2.1	OBI	3
2.1.1	Images	3
2.1.2	Bias	3
2.1.3	Parameters	4
2.1.4	Events	4
2.2	Compared Parameters	5
2.3	Aspect	6
2.4	Star Slots	9
2.4.1	Slot 3	9
2.4.2	Slot 4	10
2.4.3	Slot 5	11
2.4.4	Slot 6	12
2.4.5	Slot 7	13
2.5	FID Slots	14
2.5.1	Slot 0	14
2.5.2	Slot 1	15
2.5.3	Slot 2	16
A	Summary	17
A.1	Status	17
A.2	Comments	17

1 Front

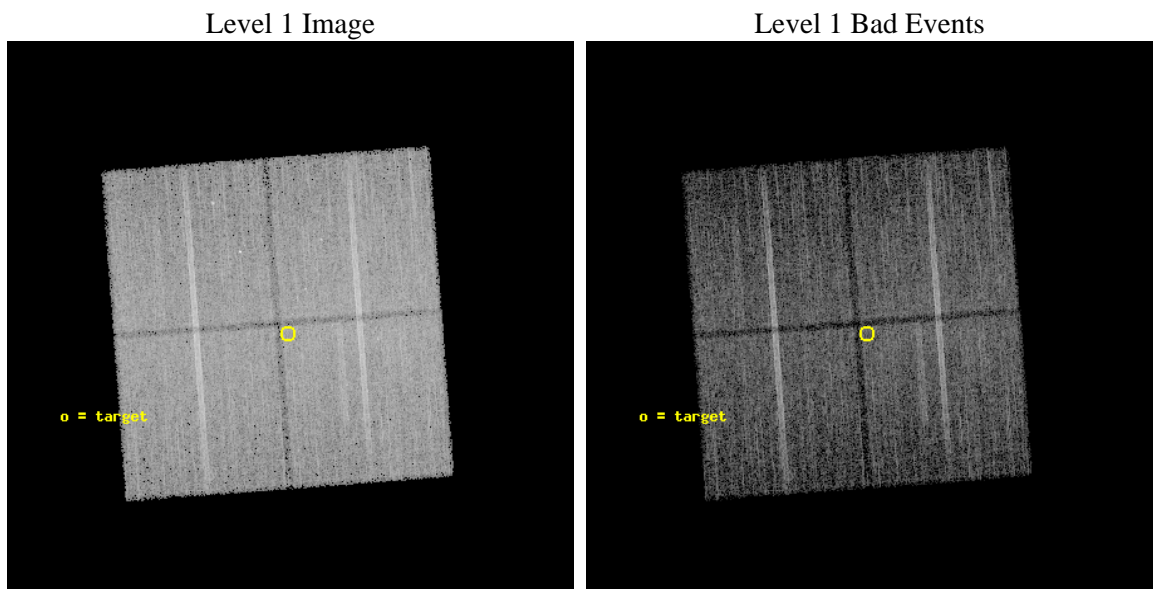
seq_num	600700	Sequence number
obs_id	9559	Observation id
title	Galactic Bulge Latitude Survey -3	Proposal title
observer	Professor Johnathan Grindlay	Principal investigator
object	GBW13	Source name
dtcycle	0	
cycle	P	events from which exps? Prim/Second/Both
ra_targ	266.678333	Observer's specified target RA [deg]
dec_targ	-29.332528	Observer's specified target Dec [deg]
ra_nom	266.67620623538	Nominal RA [deg]
dec_nom	-29.324648849897	Nominal Dec [deg]
roll_nom	85.70765075424	Nominal Roll [deg]
revision	2	Processing version of data
ontime	15049.240648925	Sum of GTIs [s]
livetime	14852.611240757	Livetime [s]
ontime0	15055.399539471	Sum of GTIs [s]
ontime1	15055.440579474	Sum of GTIs [s]
ontime2	15055.481619477	Sum of GTIs [s]
ontime3	15049.240648925	Sum of GTIs [s]
l2events	80171	Number of level 2 events



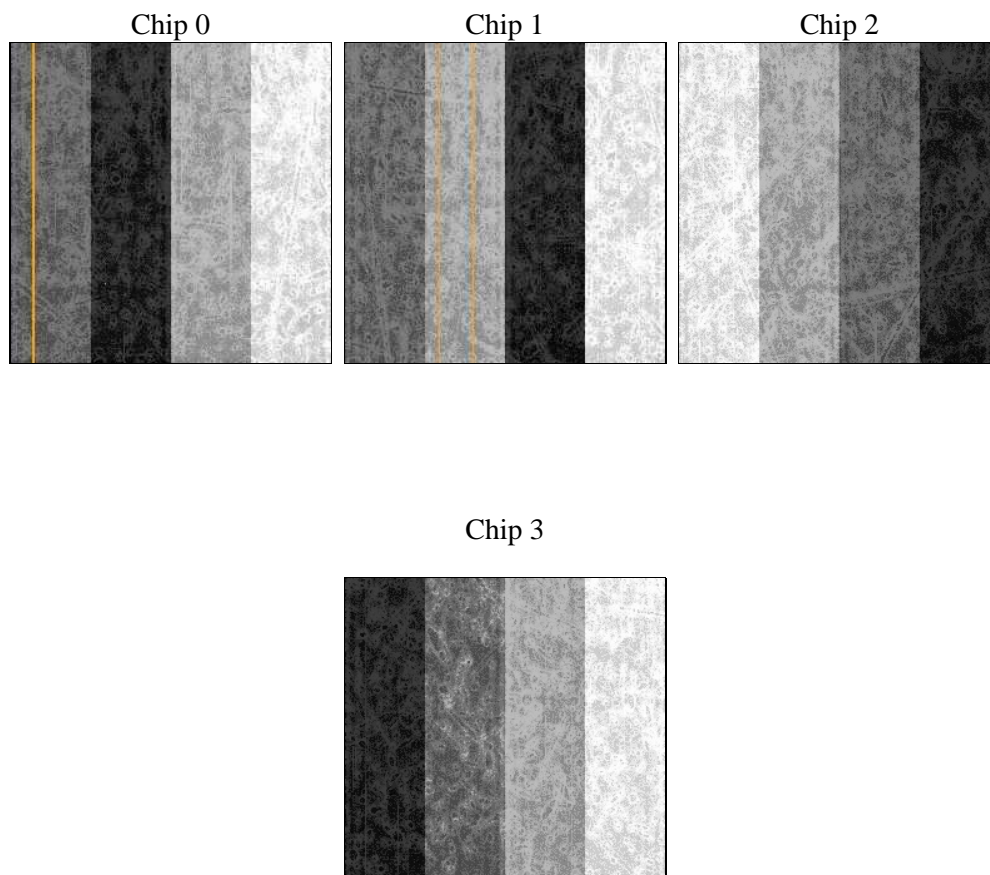
2 OBI

2.1 OBI

2.1.1 Images



2.1.2 Bias



2.1.3 Parameters

obi_num	1	Obi number	sched_exp_time	15000.000000	[s] Scheduled observation exposure time
ascdsver	8.4.4	Processing system revision	ontime	15049.240648925	Sum of GTIs [s]
caldsver	4.4.9	 	ontime0	15055.399539471	Sum of GTIs [s]
date	2012-05-14T02:43:11	Date and time of file creation	ontime1	15055.440579474	Sum of GTIs [s]
revision	2	Processing version of data	ontime2	15055.481619477	Sum of GTIs [s]
			ontime3	15049.240648925	Sum of GTIs [s]
			l1events	573951	Number of level 1 events

2.1.4 Events

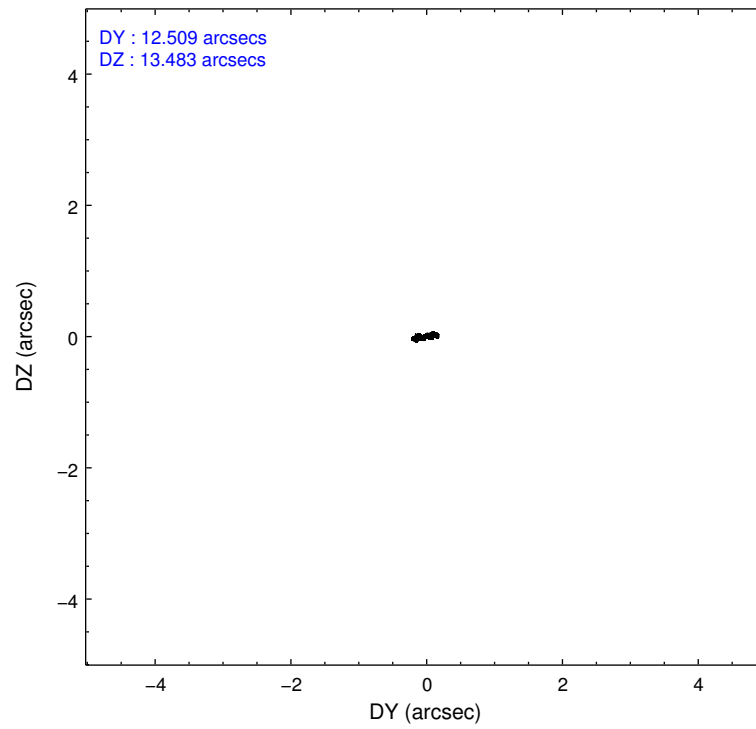
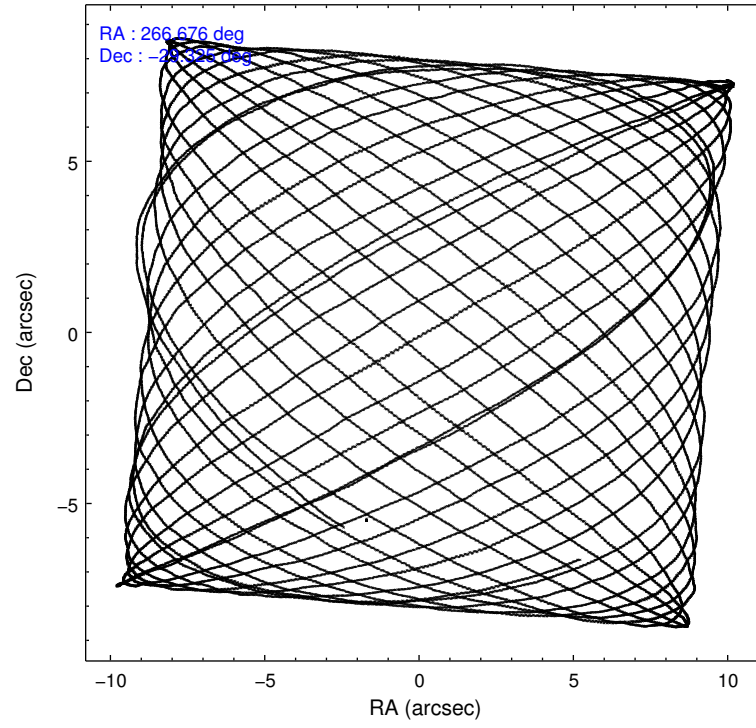
	ccd 0	ccd 1	ccd 2	ccd 3
level 1 events	134650	137670	152163	149468
rejected events	113054	116016	128856	124740
rejected %	83%	84%	84%	83%

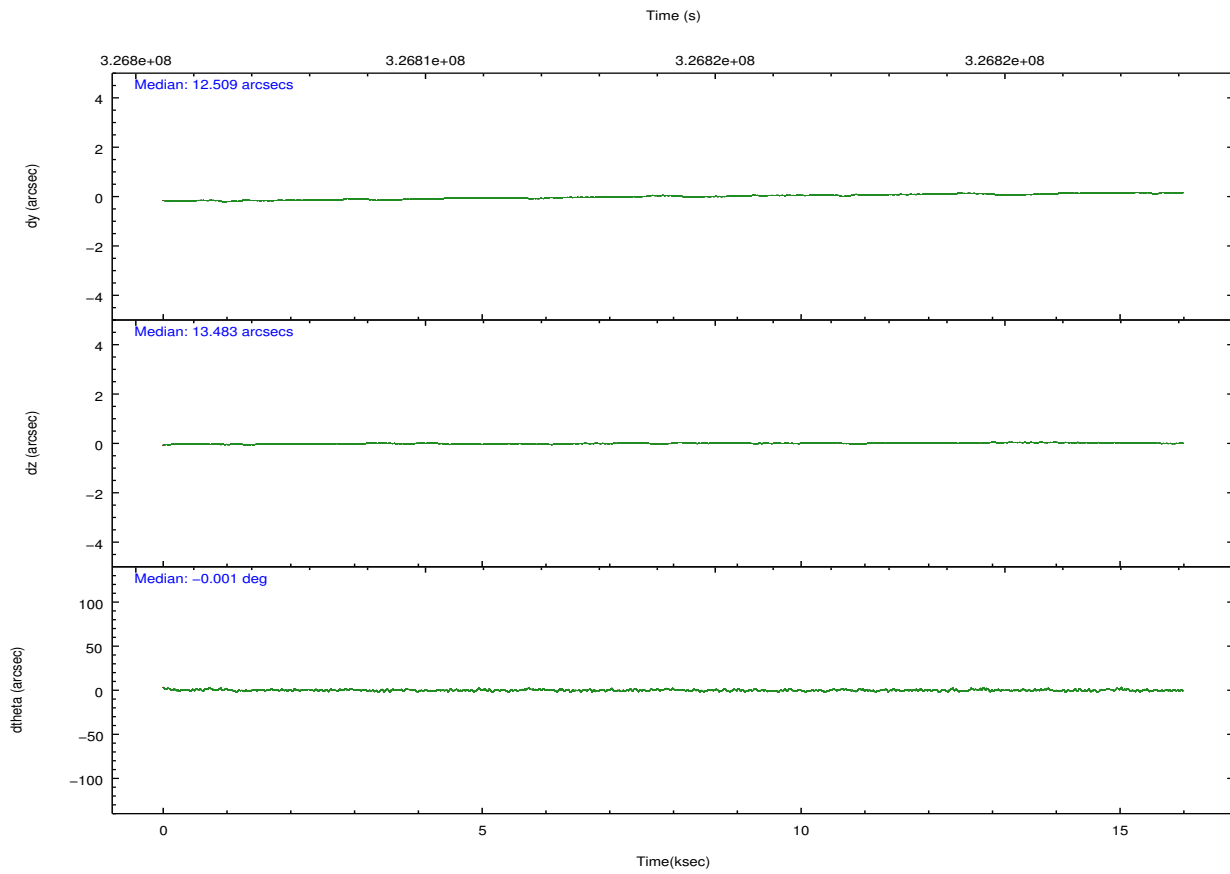
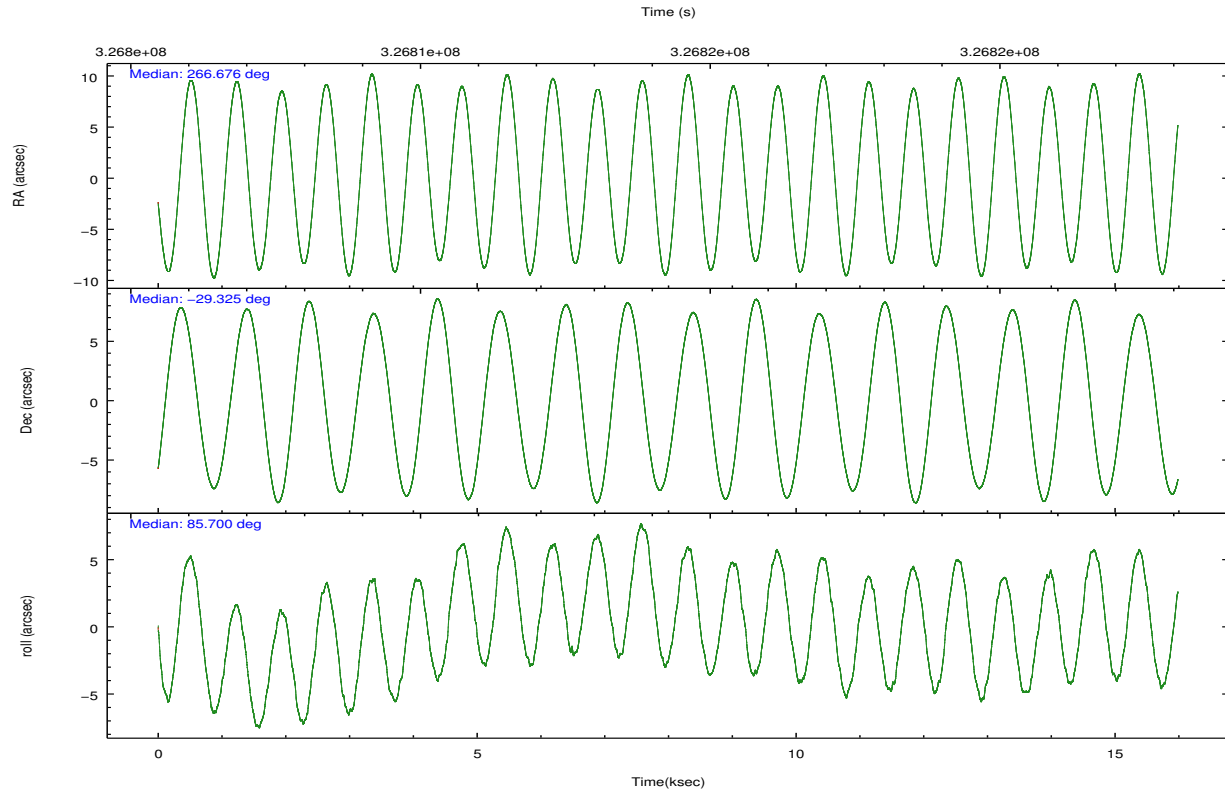
	ccd 0	ccd 1	ccd 2	ccd 3
grade 0 events	10246	9273	12084	13171
	7%	6%	7%	8%
grade 1 events	105	92	112	152
	0%	0%	0%	0%
grade 2 events	4540	4793	4362	4327
	3%	3%	2%	2%
grade 3 events	1835	1914	1851	1934
	1%	1%	1%	1%
grade 4 events	1685	1857	1946	1889
	1%	1%	1%	1%
grade 5 events	6122	6490	5797	6798
	4%	4%	3%	4%
grade 6 events	3296	3829	3071	3422
	2%	2%	2%	2%
grade 7 events	106821	109422	122940	117775
	79%	79%	80%	78%

2.2 Compared Parameters

Parameter	Planned	Actual	Parameter	Planned	Actual
Instrument	ACIS	ACIS	Obspar format version number	7	7
Detector	ACIS-0123	ACIS-0123	Obspar file type	PREDICTED	ACTUAL
Grating	NONE	NONE	Obspar update status	NONE	UPDATED
Data mode	VFAINT	VFAINT	Number of optional ACIS chips dropped	0	0
Observation mode	POINTING	POINTING	On-chip summing requested	N	N
[deg] Pointing RA	266.690049	266.6762062353814	Subarray requested	NONE	NONE
[deg] Pointing Dec	-29.349380	-29.32464884989651	Alternating exposures requested	N	N
[deg] Pointing Roll	85.505746	85.70765075424022	[s] Primary exposure time	0.000000	3.1
[mm] SIM focus pos	-0.782348	-0.7809083437167272			
[mm] SIM defocus	0	0.001439871863259334			
[mm] SIM translation stage pos	-233.592463	-233.5874344608287			
[mm] SIM translation stage offset	0	-0.005018542100998502			
[s] Observation start time (MET)	326807258.184000	326805983.85068			
Observation start date	2008-05-10T11:46:33	2008-05-10T11:26:23			
[s] Observation end time (MET)	326822258.184000	326822495.06398			
Observation end date	2008-05-10T15:56:33	2008-05-10T16:01:35			
Read mode	TIMED	TIMED			

2.3 Aspect



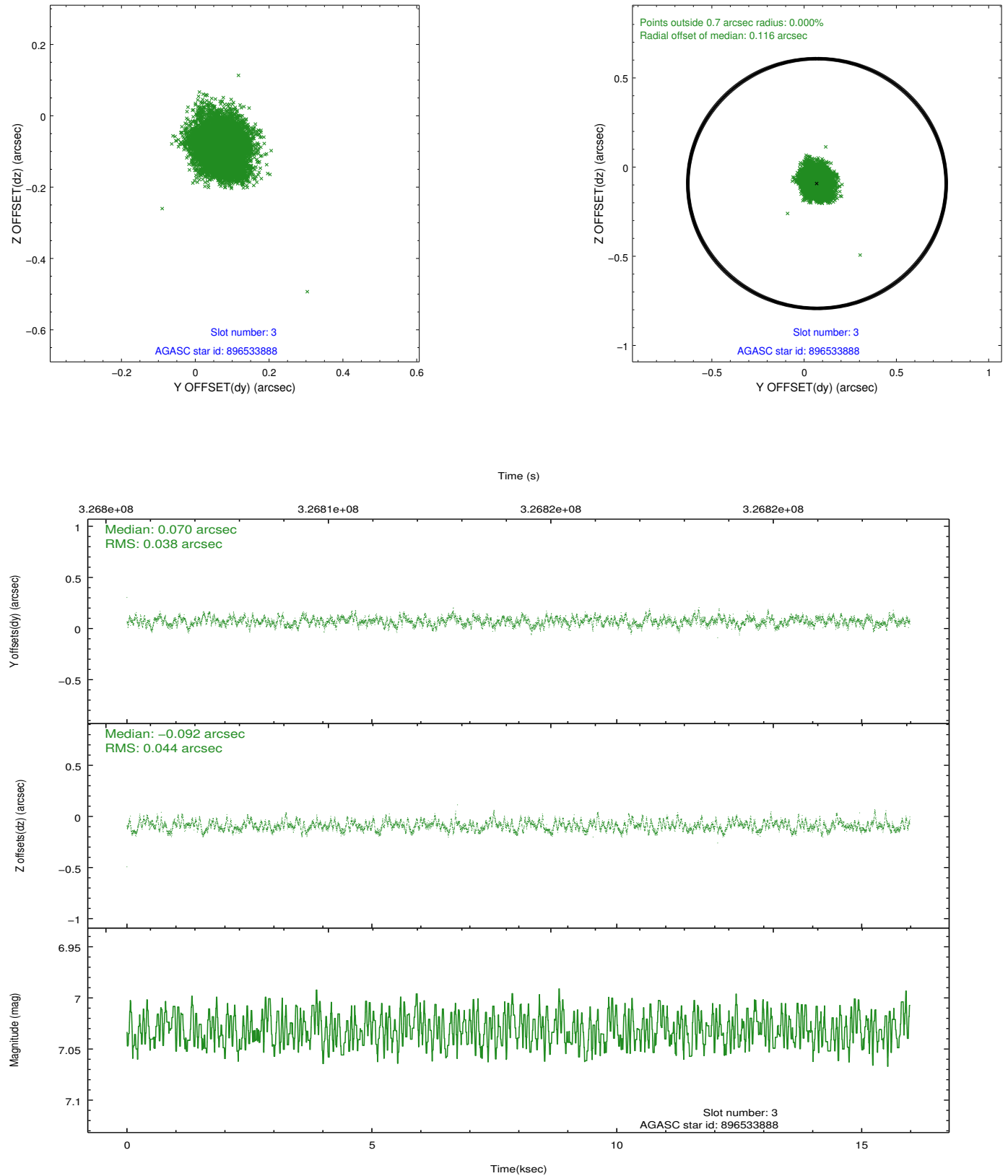


Slot Statistics

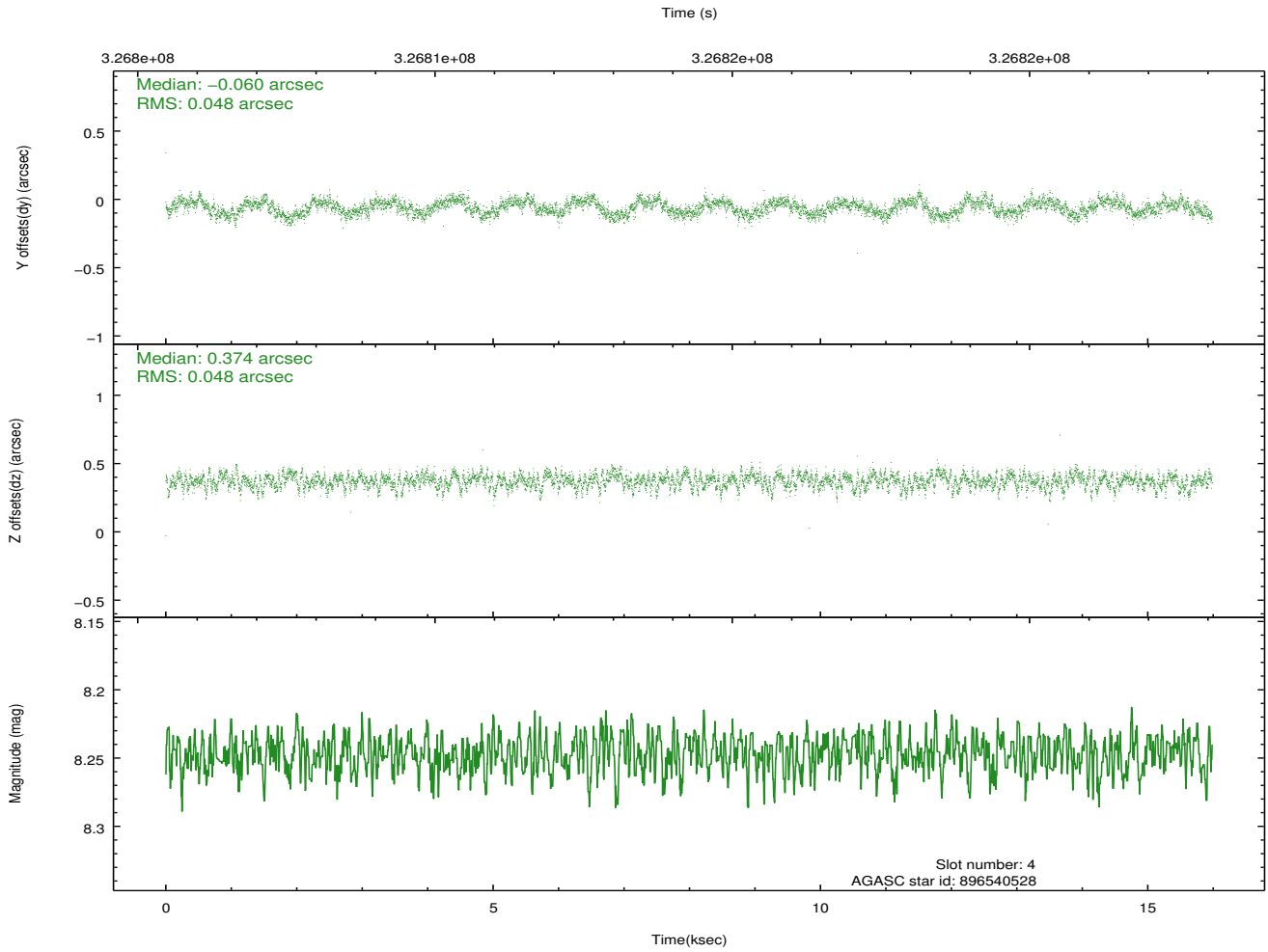
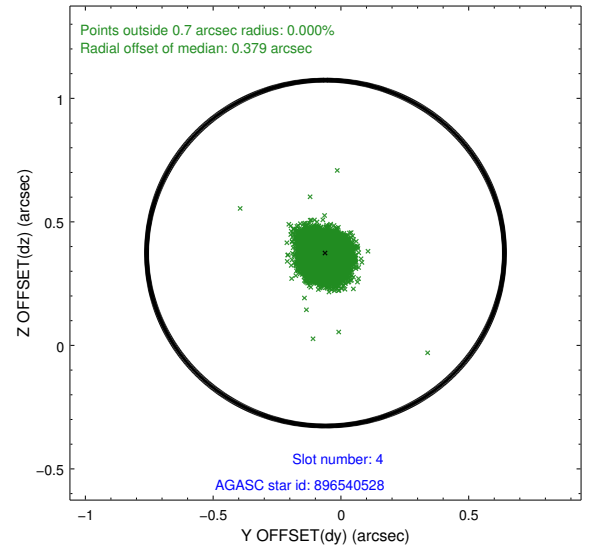
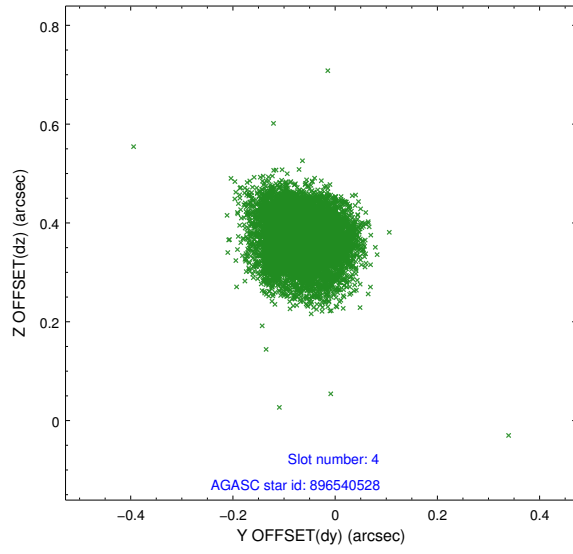
slot	status	id	mag	n_pts	med_dy	med_dz	dr1	dr2	ra	dec	mean_y	mean_z
0	FID	ACIS-I-1	7.05	3900	-0.058	0.085	0.009	0.016	0.000000	0.000000	926.95	-836.97
1	FID	ACIS-I-2	6.96	3898	-0.127	-0.084	0.007	0.012	0.000000	0.000000	-767.05	-843.69
2	FID	ACIS-I-4	6.99	3900	0.087	0.066	0.007	0.011	0.000000	0.000000	2146.89	1062.66
3	GUIDE	896533888	7.03	7798	0.070	-0.092	0.062	0.099	266.666434	-29.392757	-161.28	61.46
4	GUIDE	896540528	8.25	7794	-0.060	0.374	0.073	0.114	267.368305	-29.314773	285.12	-2113.20
5	GUIDE	896541168	8.14	7795	0.233	-0.002	0.057	0.096	266.319970	-29.850801	-1891.80	1010.00
6	GUIDE	896540808	7.49	7799	0.026	-0.307	0.054	0.086	265.985401	-29.308604	-33.99	2215.97
7	GUIDE	896537176	8.03	7796	-0.265	0.032	0.045	0.075	266.498272	-28.678259	2360.44	793.76

2.4 Star Slots

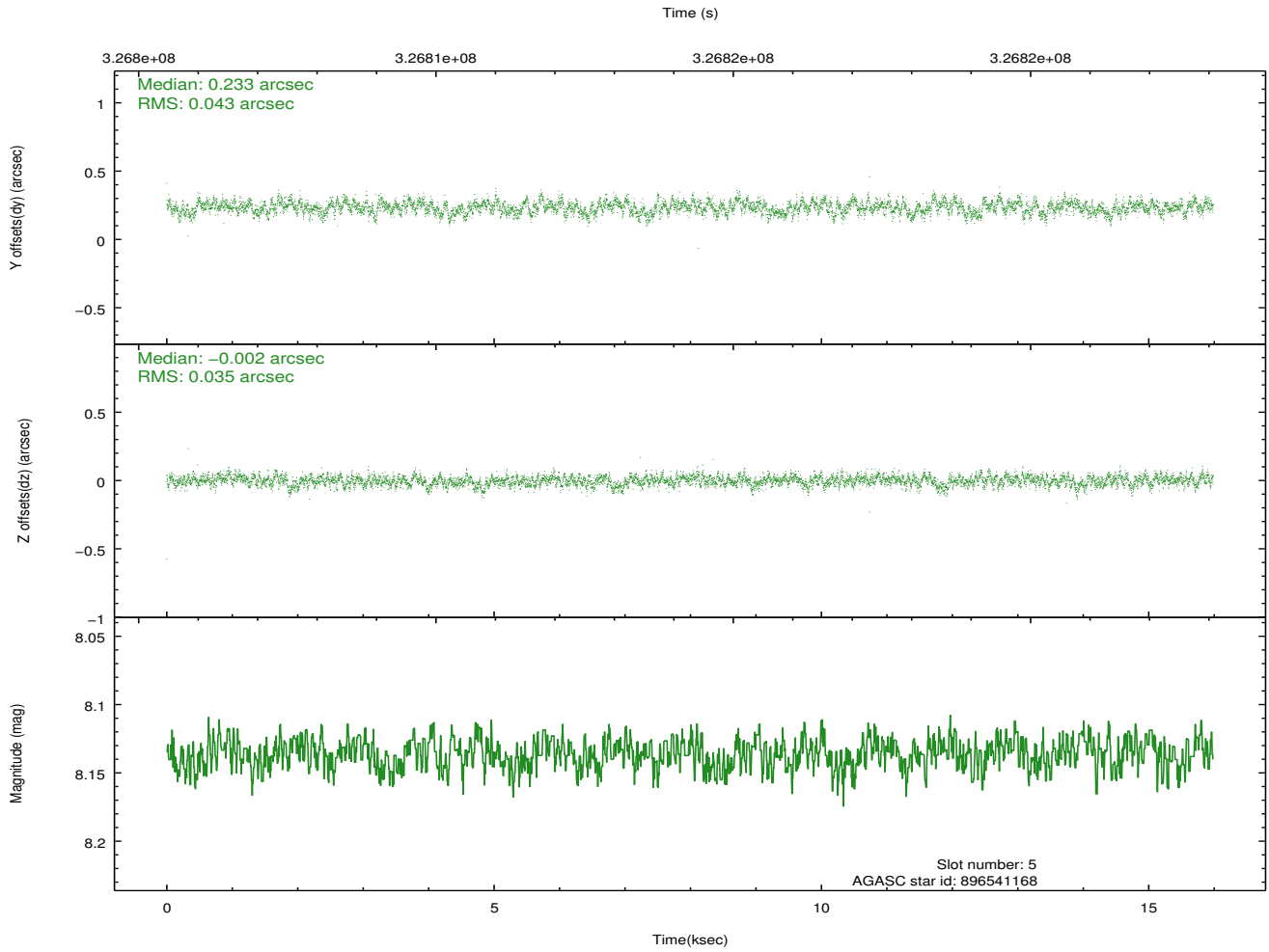
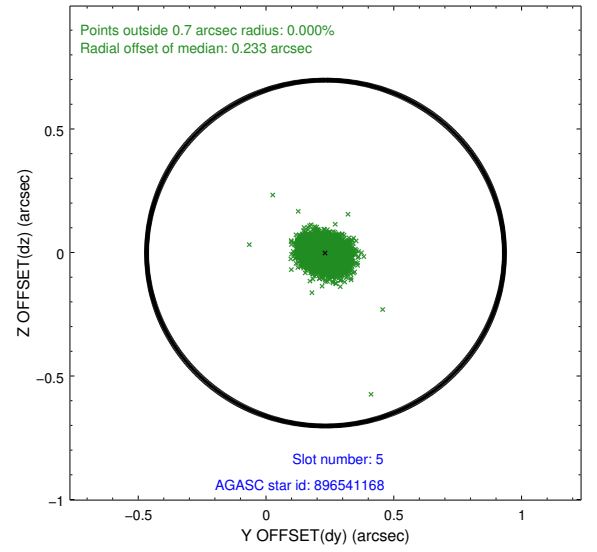
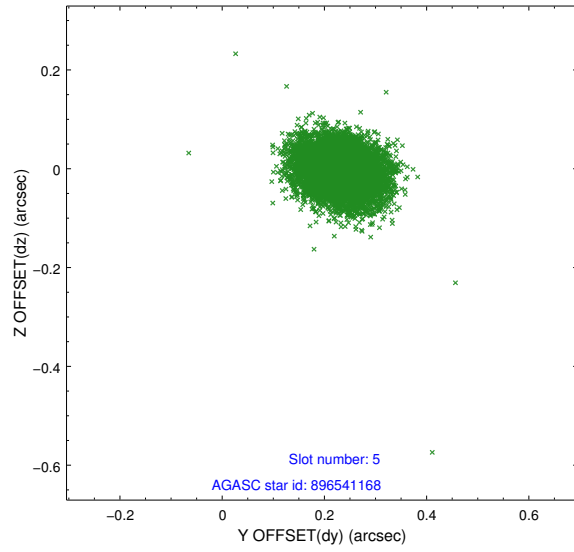
2.4.1 Slot 3



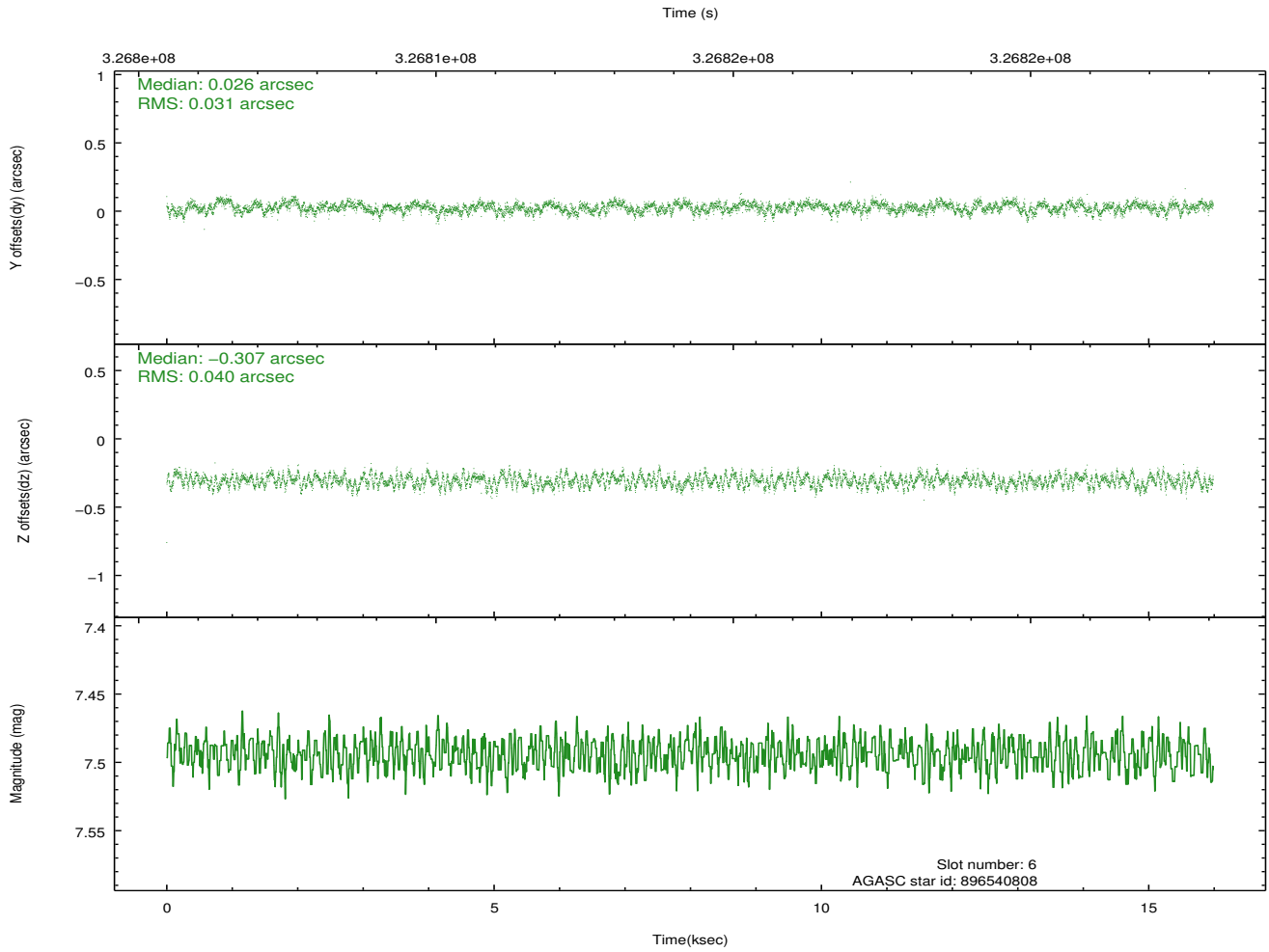
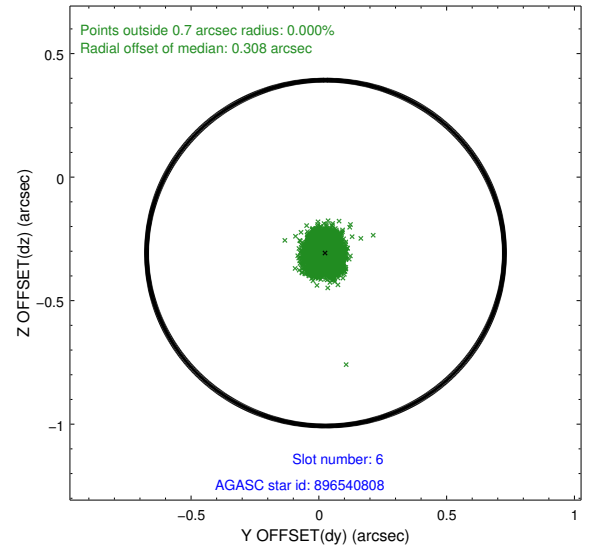
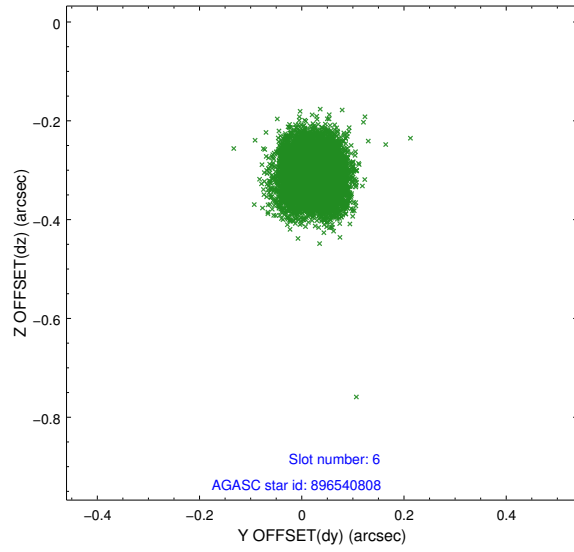
2.4.2 Slot 4



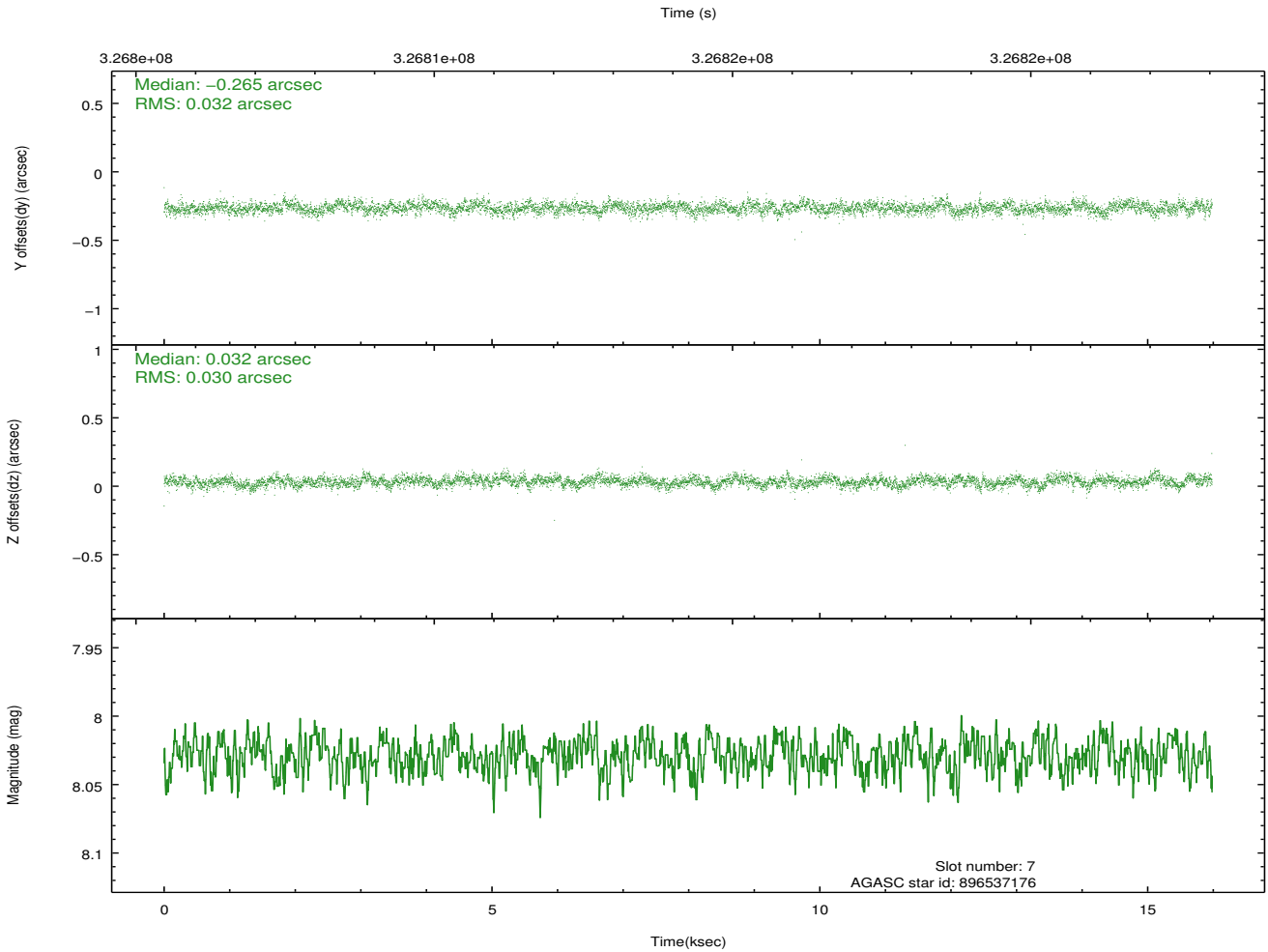
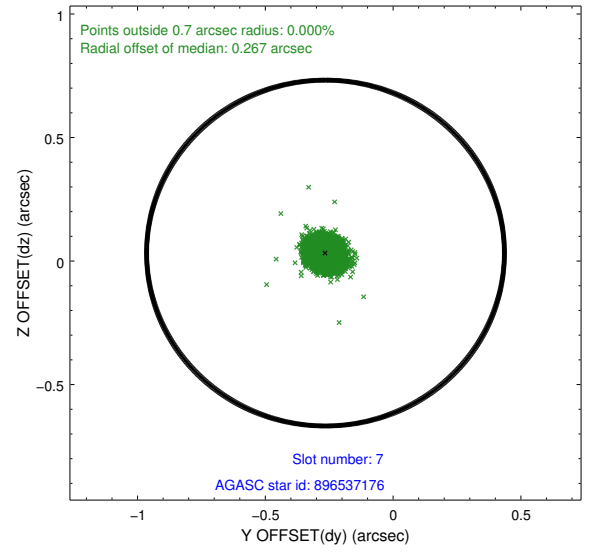
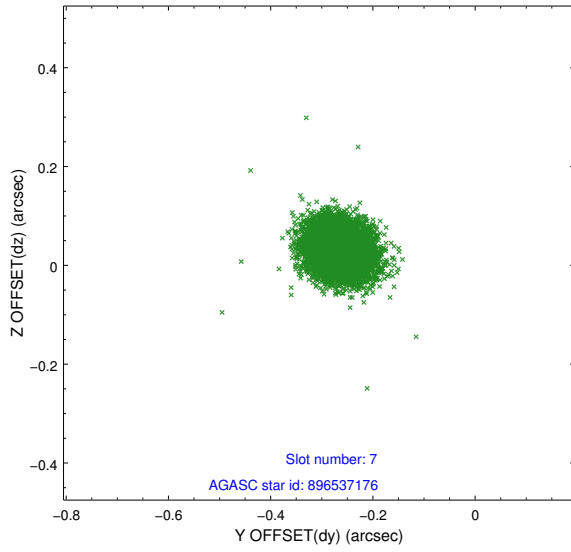
2.4.3 Slot 5



2.4.4 Slot 6

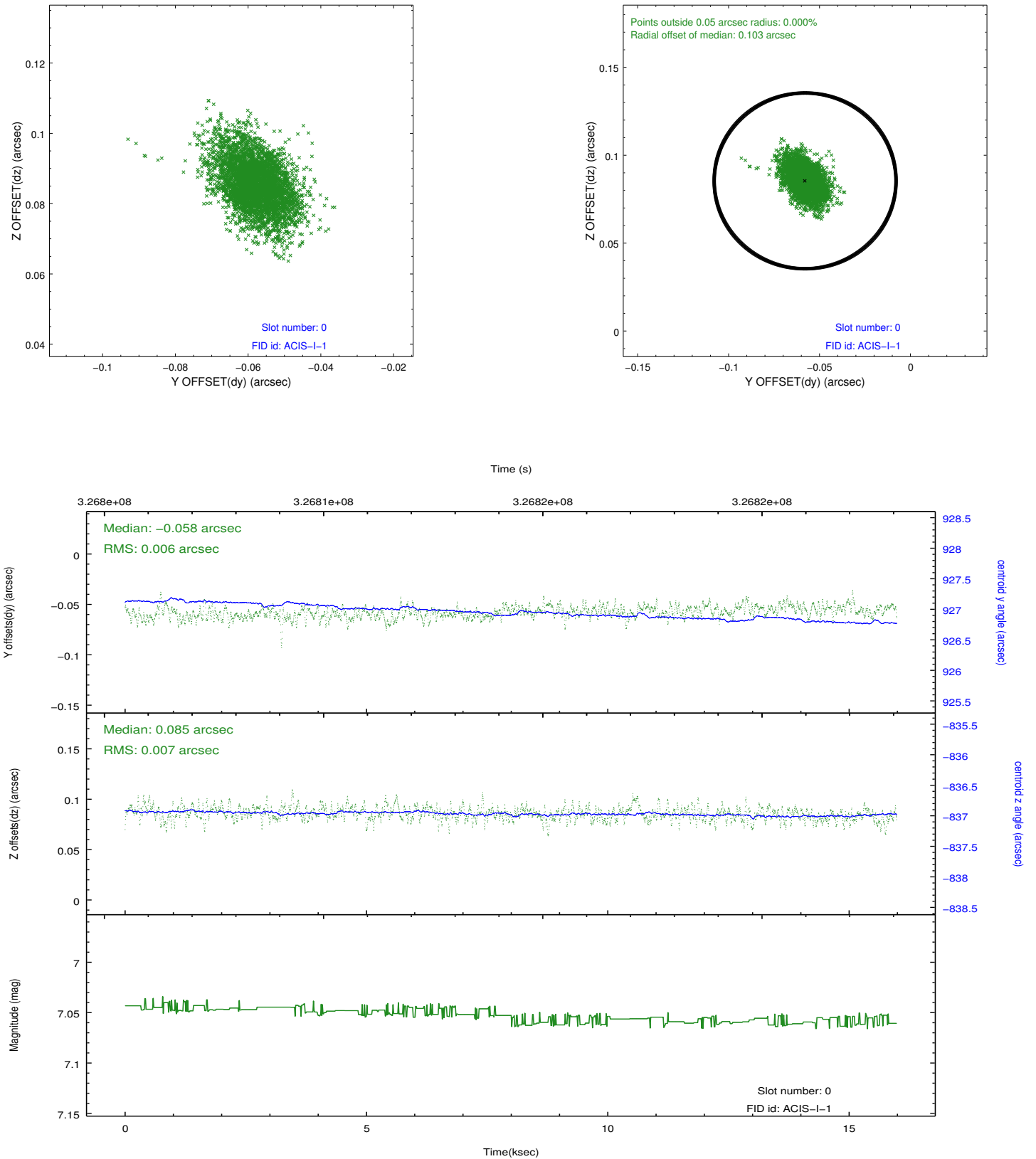


2.4.5 Slot 7

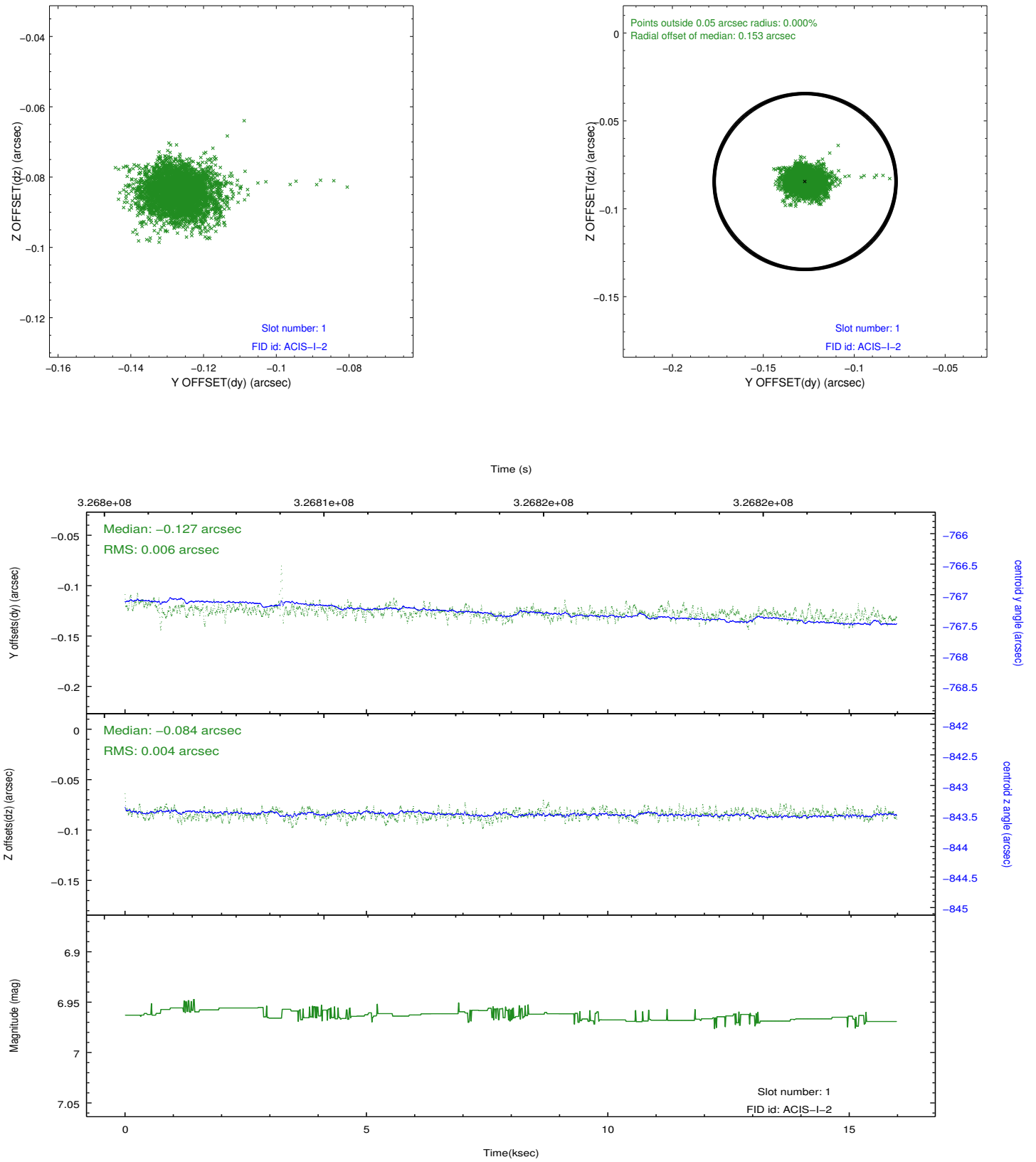


2.5 FID Slots

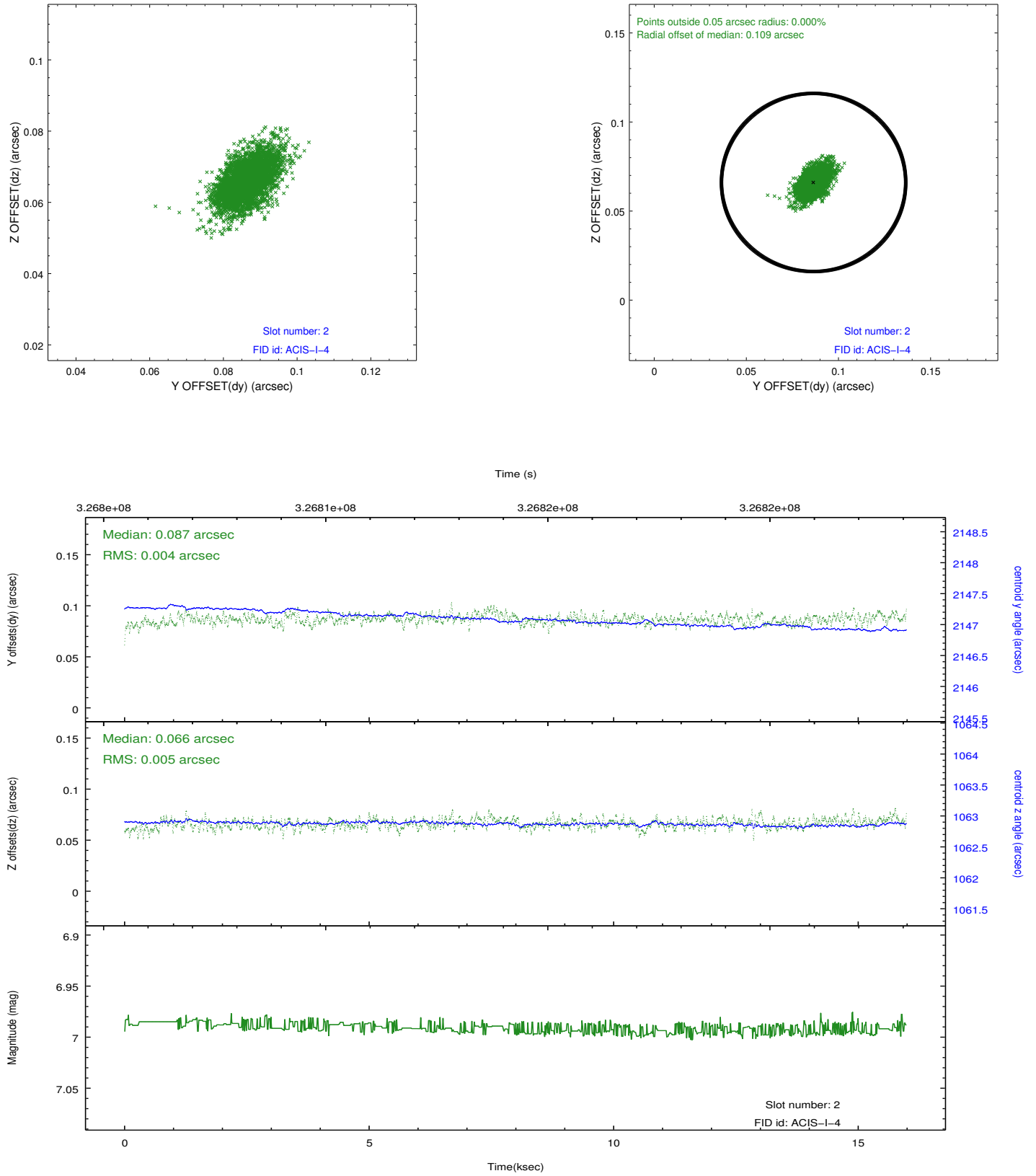
2.5.1 Slot 0



2.5.2 Slot 1



2.5.3 Slot 2



A Summary

A.1 Status

V&V Scientist	Beth Sundheim
V&V Date (YYYY-MM-DD)	2012.05.16
V&V Edition	1
V&V Disposition and Status	OK
V&V Charge Time	15.0504181

A.2 Comments

Joint proposal with NOAO.