

# V&V Reference Report

## L2 ASCDS Version : 8.4.4

Observation 9813 - L2 Version 2  
Chandra X-Ray Center

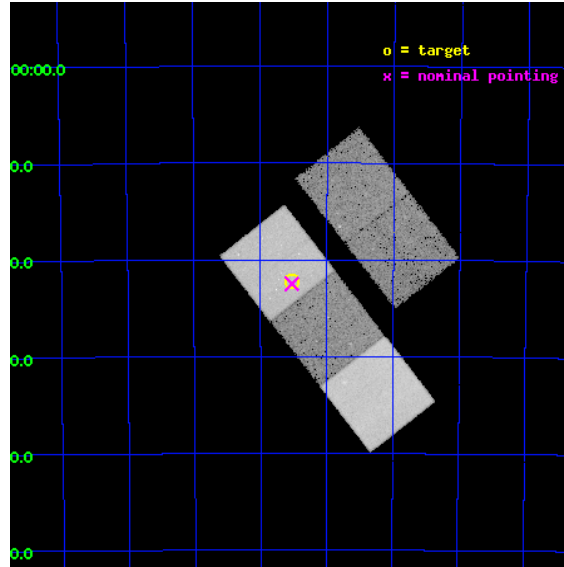
L2 Processing Date : May 14 2012

## Contents

<b>1</b>	<b>Front</b>	<b>2</b>
<b>2</b>	<b>OBI</b>	<b>3</b>
2.1	OBI . . . . .	3
2.1.1	Images . . . . .	3
2.1.2	Bias . . . . .	3
2.1.3	Parameters . . . . .	4
2.1.4	Events . . . . .	4
2.2	Compared Parameters . . . . .	5
2.3	Aspect . . . . .	6
2.4	Star Slots . . . . .	9
2.4.1	Slot 3 . . . . .	9
2.4.2	Slot 4 . . . . .	10
2.4.3	Slot 5 . . . . .	11
2.4.4	Slot 6 . . . . .	12
2.4.5	Slot 7 . . . . .	13
2.5	FID Slots . . . . .	14
2.5.1	Slot 0 . . . . .	14
2.5.2	Slot 1 . . . . .	15
2.5.3	Slot 2 . . . . .	16
<b>A</b>	<b>Summary</b>	<b>17</b>
A.1	Status . . . . .	17
A.2	Comments . . . . .	17

# 1 Front

seq_num	500950	Sequence number
obs_id	9813	Observation id
title	The extreme late-time light curve of GRB 060729	Proposal title
observer	Dr. Dirk Grupe	Principal investigator
object	GRB 060729	Source name
dtcycle	0	&#160
cycle	P	events from which exps? Prim/Second/Both
ra_targ	95.382917	Observer's specified target RA [deg]
dec_targ	-62.370139	Observer's specified target Dec [deg]
ra_nom	95.381794060967	Nominal RA [deg]
dec_nom	-62.374961205159	Nominal Dec [deg]
roll_nom	232.15563248642	Nominal Roll [deg]
revision	2	Processing version of data
ontime	28179.000216722	Sum of GTIs [s]
livetime	27810.820833813	Livetime [s]
ontime2	28175.859246314	Sum of GTIs [s]
ontime3	28175.859226406	Sum of GTIs [s]
ontime5	28179.000216722	Sum of GTIs [s]
ontime6	28179.000216722	Sum of GTIs [s]
ontime7	28179.000216722	Sum of GTIs [s]
l2events	310759	Number of level 2 events

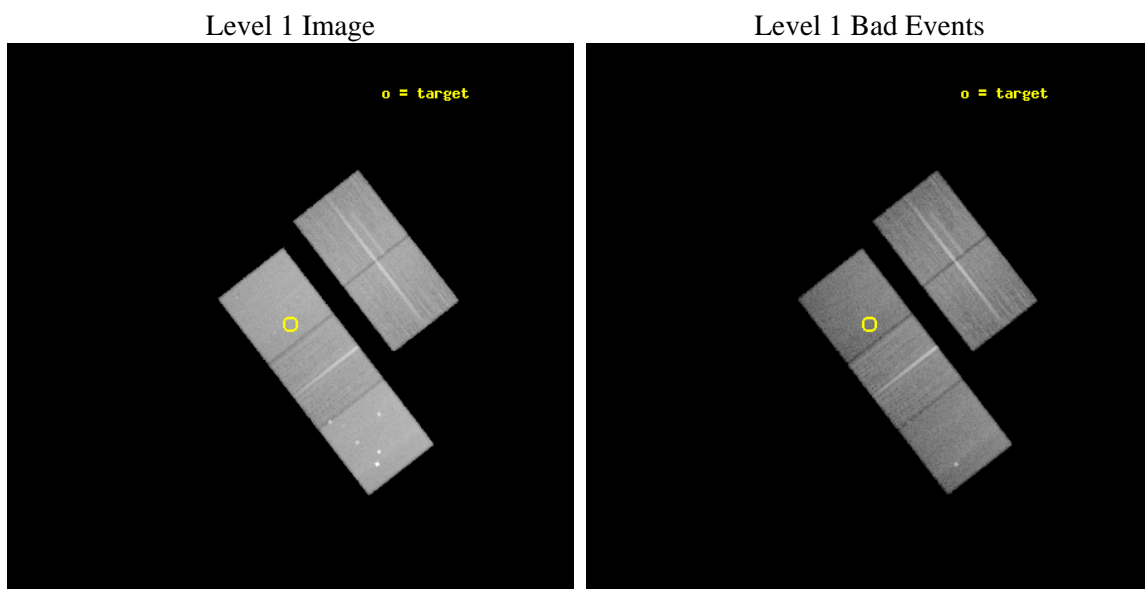




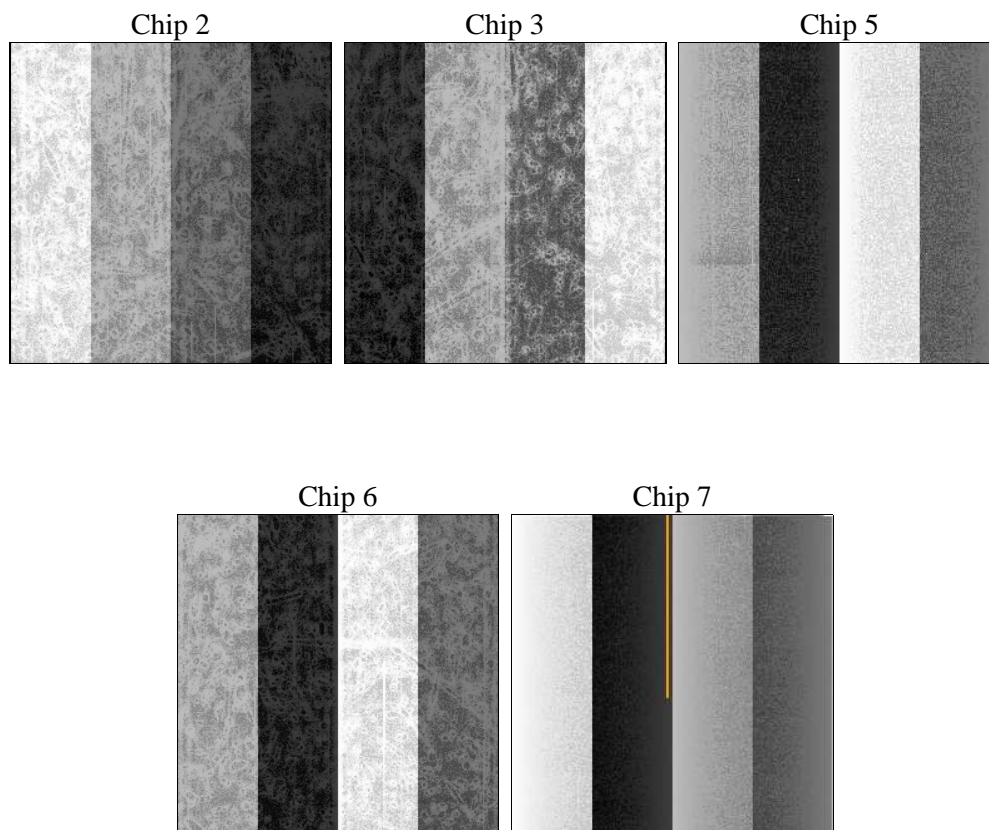
## 2 OBI

### 2.1 OBI

#### 2.1.1 Images



#### 2.1.2 Bias



### 2.1.3 Parameters

obi_num	0	Obi number	sched_exp_time	28000.000000	[s] Scheduled observation exposure time
ascdsver	8.4.4	Processing system revision	ontime	28179.000216722	Sum of GTIs [s]
caldsver	4.4.9	&#160	ontime2	28175.859226314	Sum of GTIs [s]
date	2012-05-14T01:49:00	Date and time of file creation	ontime3	28175.859226406	Sum of GTIs [s]
revision	2	Processing version of data	ontime5	28179.000216722	Sum of GTIs [s]
			ontime6	28179.000216722	Sum of GTIs [s]
			ontime7	28179.000216722	Sum of GTIs [s]
			l1events	1231052	Number of level 1 events

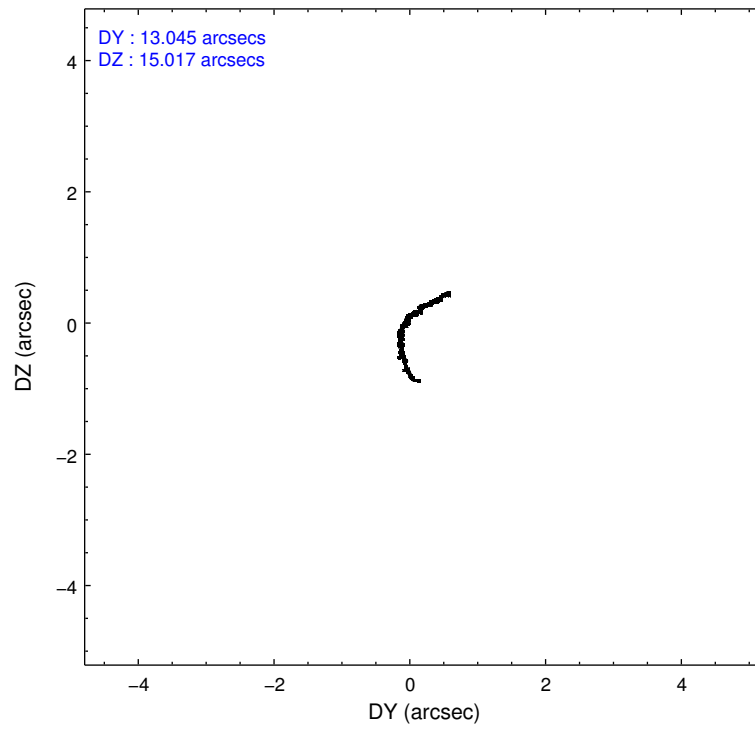
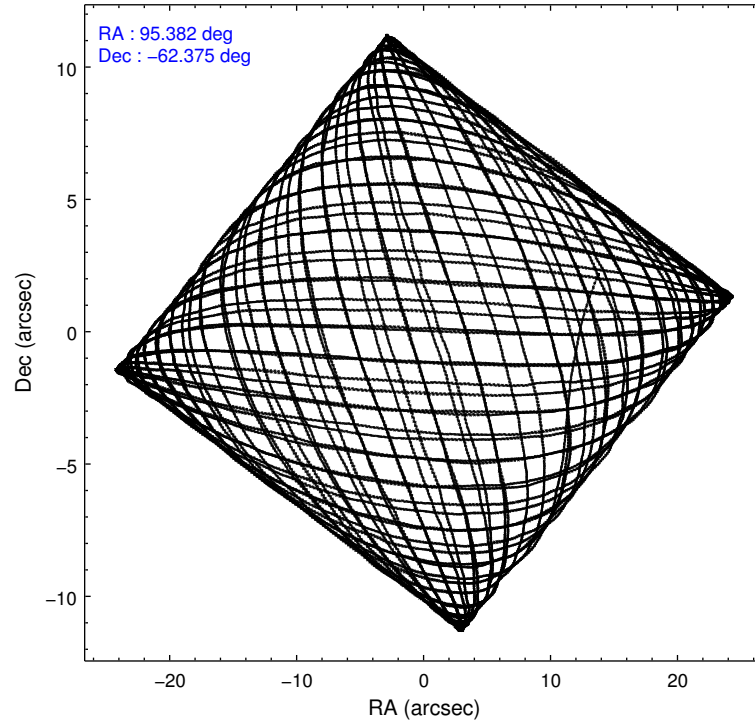
### 2.1.4 Events

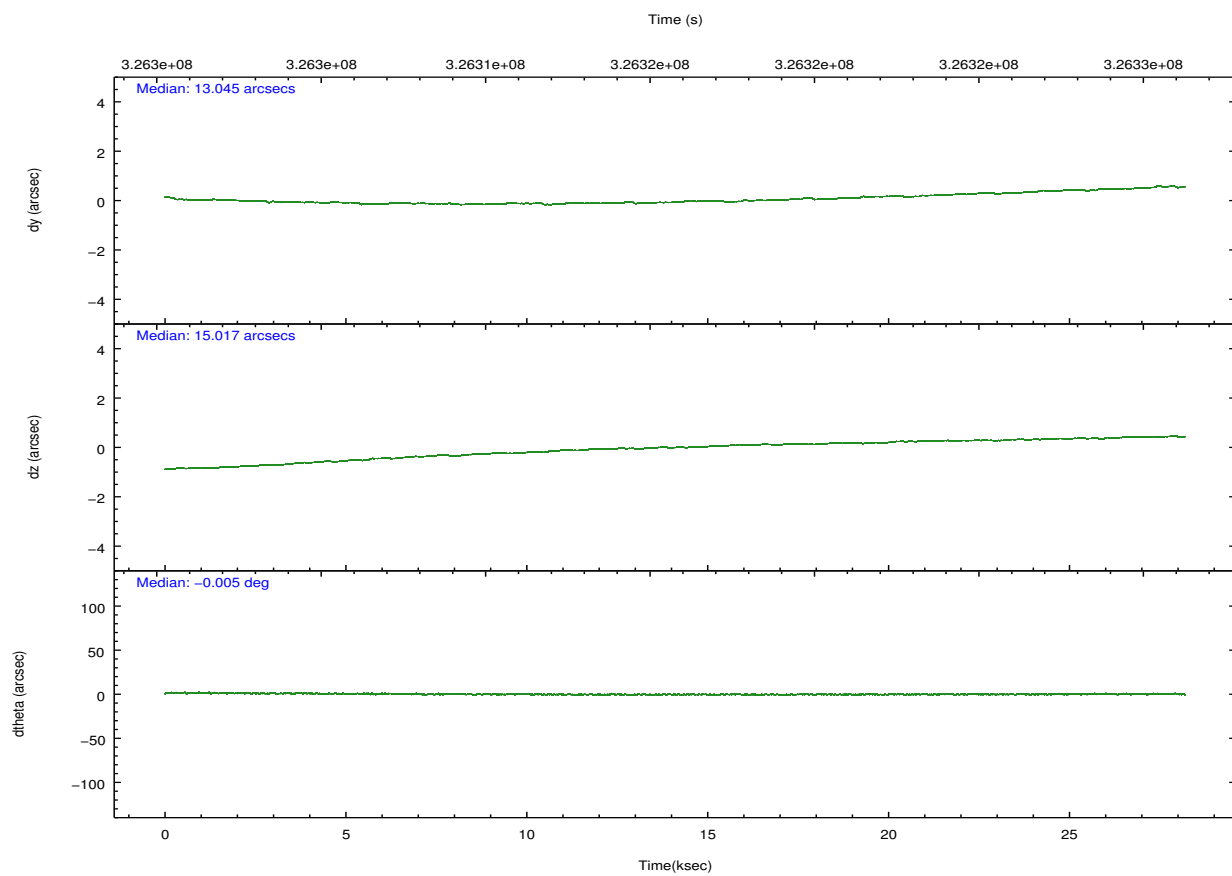
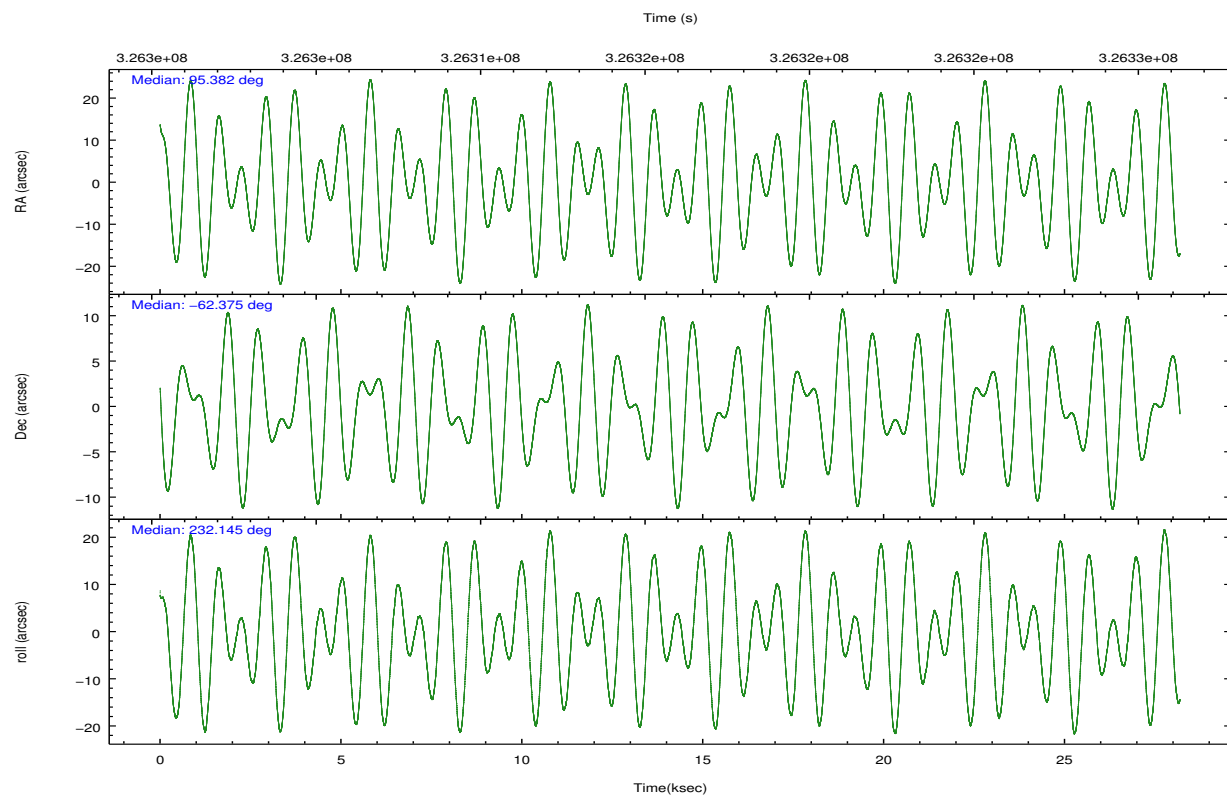
	ccd 2	ccd 3	ccd 5	ccd 6	ccd 7		ccd 2	ccd 3	ccd 5	ccd 6	ccd 7
level 1 events	224242	213162	321891	220719	251038	grade 0 events	7548	7397	21770	7974	11091
rejected events	202862	191946	158124	197697	136818		3%	3%	6%	3%	4%
rejected %	90%	90%	49%	89%	54%	grade 1 events	122	141	1533	107	292
							0%	0%	0%	0%	0%
						grade 2 events	5210	4627	49073	5117	23343
							2%	2%	15%	2%	9%
						grade 3 events	2234	2441	6380	2515	10583
							0%	1%	1%	1%	4%
						grade 4 events	2378	2418	6092	2595	10467
							1%	1%	1%	1%	4%
						grade 5 events	7286	8972	24625	9087	26623
							3%	4%	7%	4%	10%
						grade 6 events	4026	4347	80577	4833	58831
							1%	2%	25%	2%	23%
						grade 7 events	195438	182819	131841	188491	109808
							87%	85%	40%	85%	43%

## 2.2 Compared Parameters

Parameter	Planned	Actual	Parameter	Planned	Actual
Instrument	ACIS	ACIS	Obspar format version number	7	7
Detector	ACIS-23567	ACIS-23567	Obspar file type	PREDICTED	ACTUAL
Grating	NONE	NONE	Obspar update status	NONE	UPDATED
Data mode	VFAINT	VFAINT	Number of optional ACIS chips dropped	0	0
Observation mode	POINTING	POINTING	On-chip summing requested	N	N
[deg] Pointing RA	95.389043	95.38179406096654	Subarray requested	NONE	NONE
[deg] Pointing Dec	-62.347823	-62.37496120515905	Alternating exposures requested	N	N
[deg] Pointing Roll	232.005427	232.155632486425	[s] Primary exposure time	0.000000	3.1
[mm] SIM focus pos	-0.684267	-0.6828225247311905			
[mm] SIM defocus	0	0.001444936568705701			
[mm] SIM translation stage pos	-190.132523	-190.1400660498719			
[mm] SIM translation stage offset	0	0.00754346686406393			
[s] Observation start time (MET)	326301854.184000	326300845.37606			
Observation start date	2008-05-04T15:23:09	2008-05-04T15:07:25			
[s] Observation end time (MET)	326329854.184000	326330538.09001			
Observation end date	2008-05-04T23:09:49	2008-05-04T23:22:18			
Read mode	TIMED	TIMED			

## 2.3 Aspect



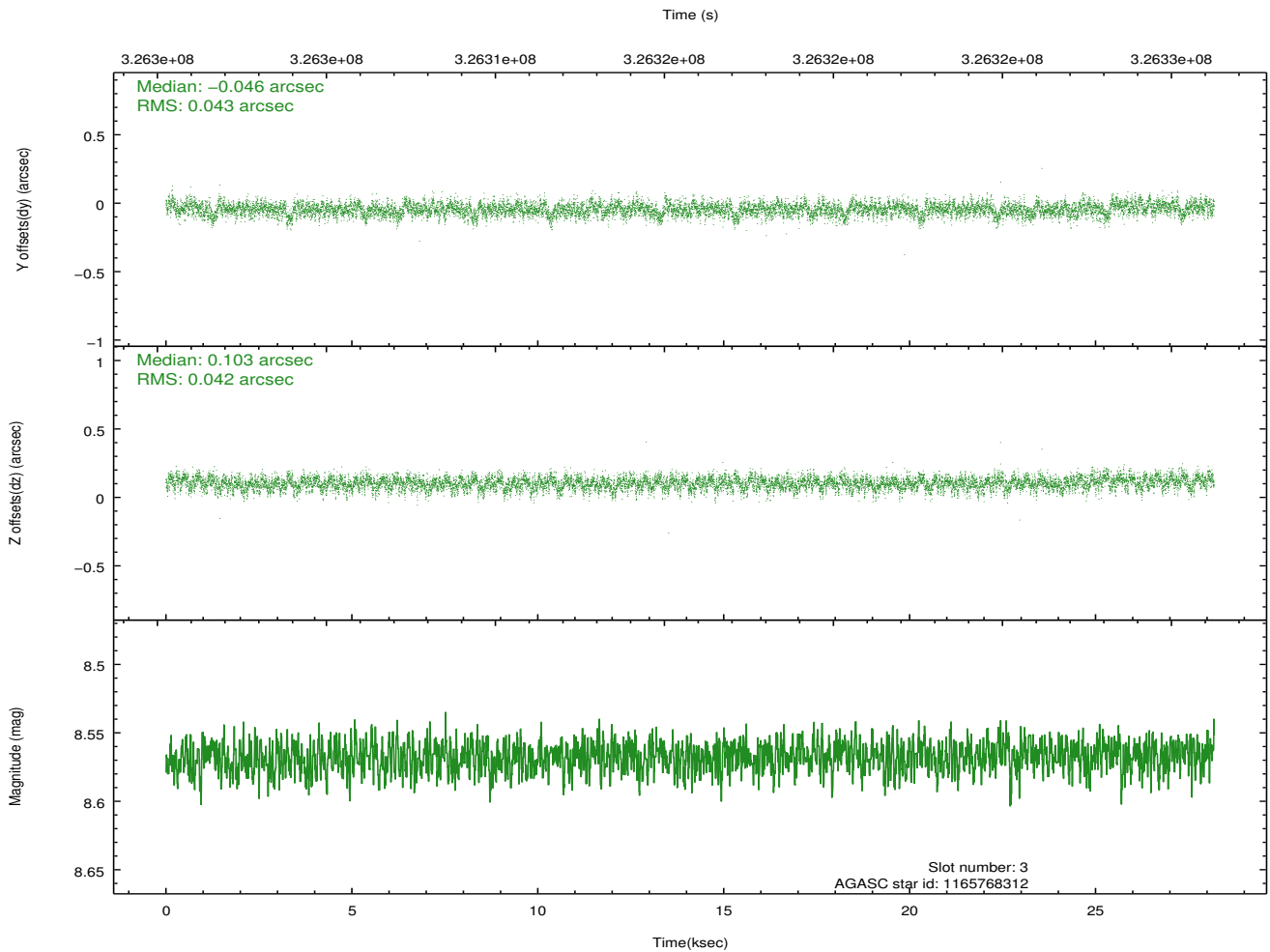
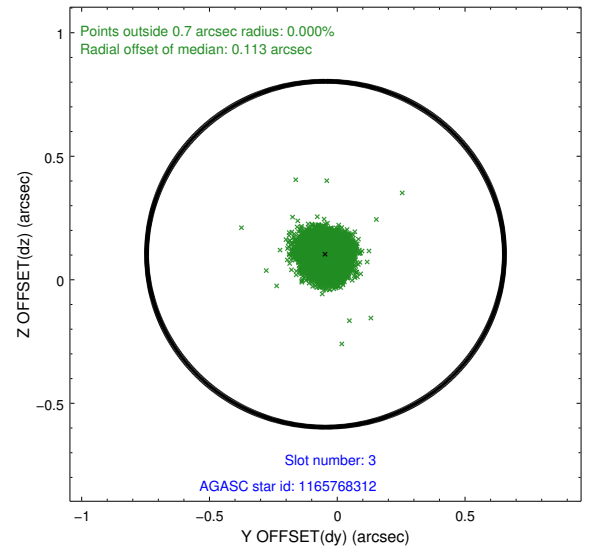
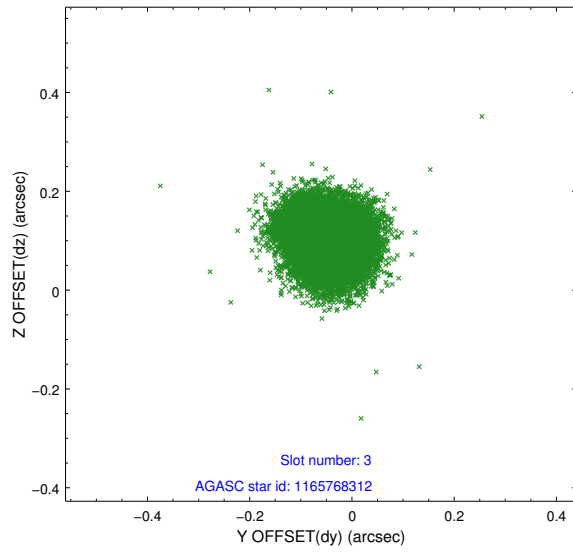


### Slot Statistics

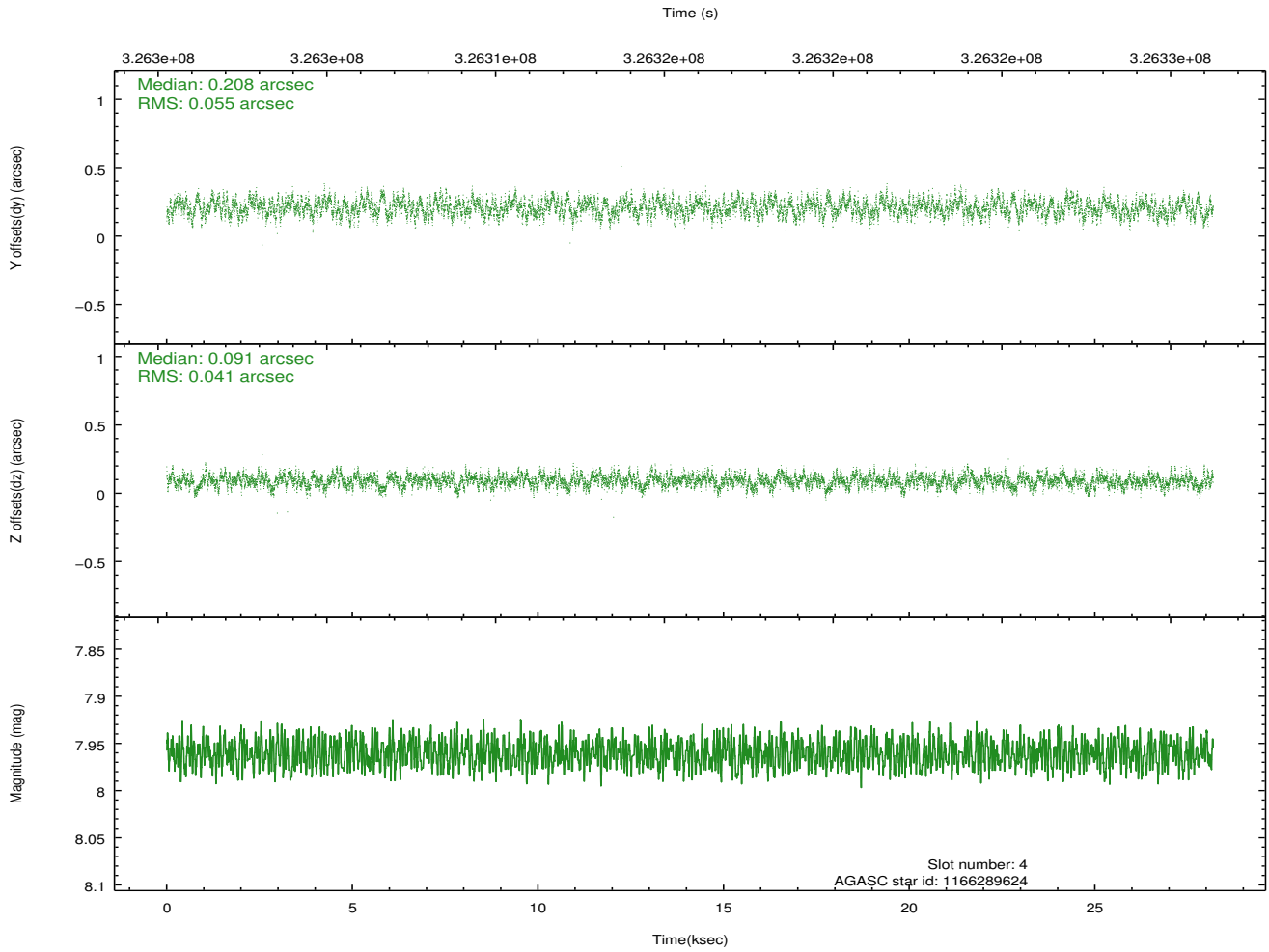
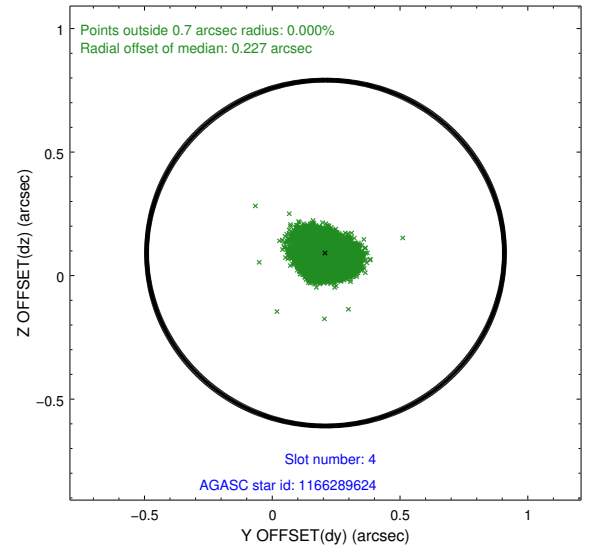
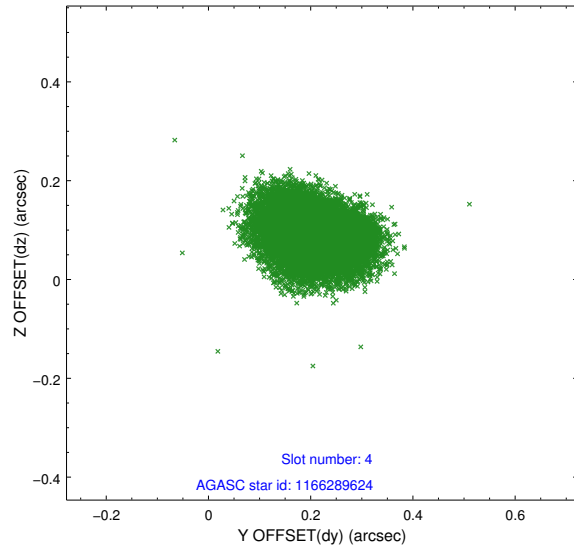
slot	status	id	mag	n_pts	med_dy	med_dz	dr1	dr2	ra	dec	mean_y	mean_z
0	FID	ACIS-S-2	6.86	6875	-0.045	0.006	0.010	0.018	0.000000	0.000000	-766.05	-1736.32
1	FID	ACIS-S-4	6.94	6875	0.116	0.020	0.007	0.015	0.000000	0.000000	2147.32	172.14
2	FID	ACIS-S-5	6.97	6874	-0.102	-0.018	0.010	0.017	0.000000	0.000000	-1818.87	165.80
3	GUIDE	1165768312	8.57	13746	-0.046	0.103	0.064	0.103	95.468462	-61.602862	-2196.70	-1543.74
4	GUIDE	1166289624	7.96	13743	0.208	0.091	0.074	0.116	95.229966	-62.354097	181.95	-194.97
5	GUIDE	1166290504	9.15	13741	-0.022	-0.078	0.093	0.150	94.421217	-62.304320	883.28	-1364.90
6	GUIDE	1166293432	7.18	13749	-0.048	-0.028	0.067	0.106	95.278960	-62.189330	-335.37	-496.71
7	GUIDE	1166293888	7.03	13679	-0.096	-0.095	0.069	0.114	96.952580	-62.149930	-2155.17	1652.93

## 2.4 Star Slots

### 2.4.1 Slot 3

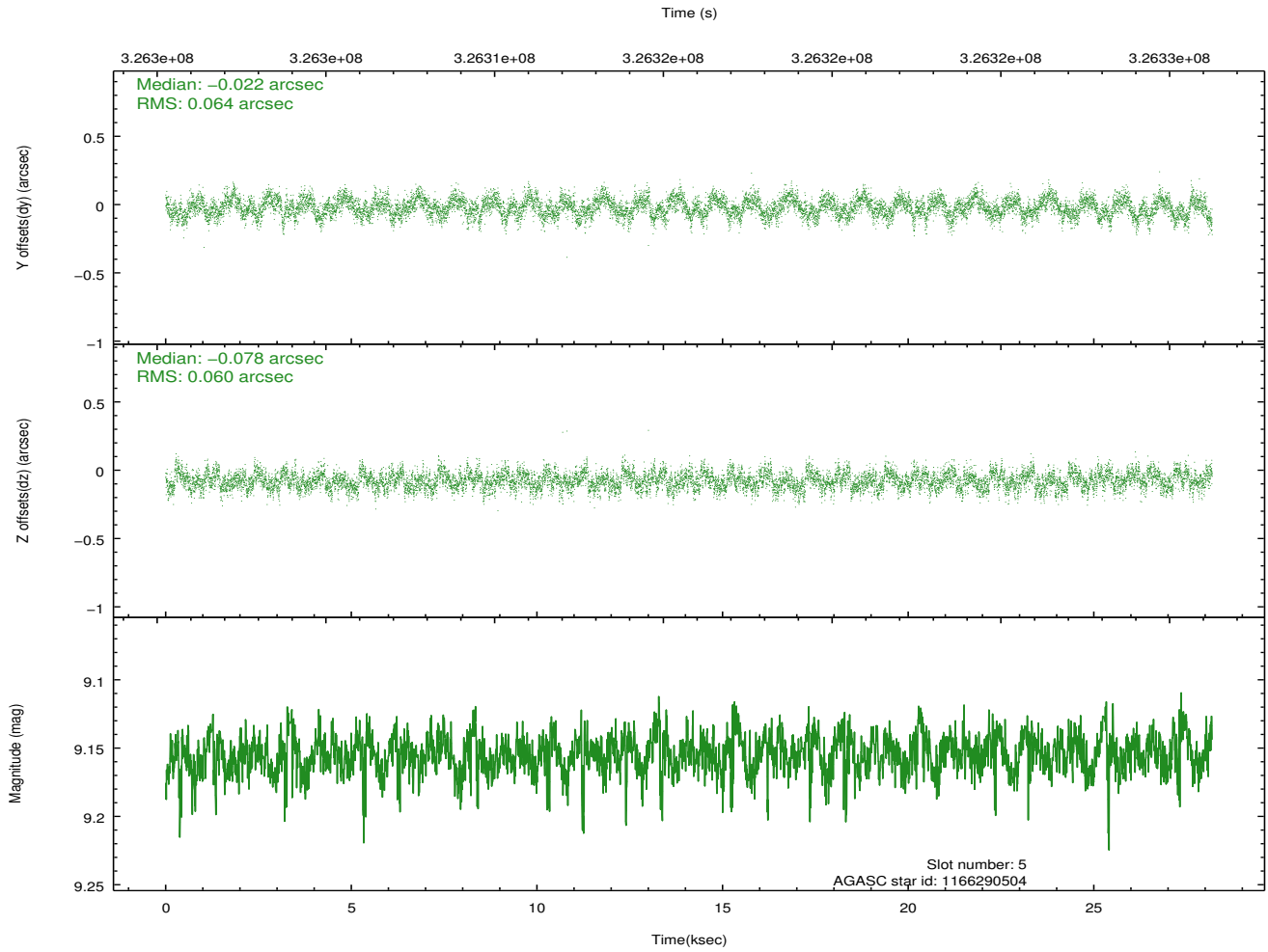
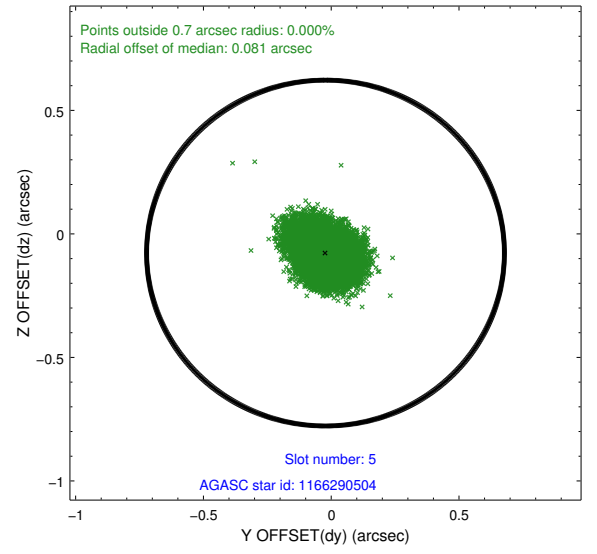
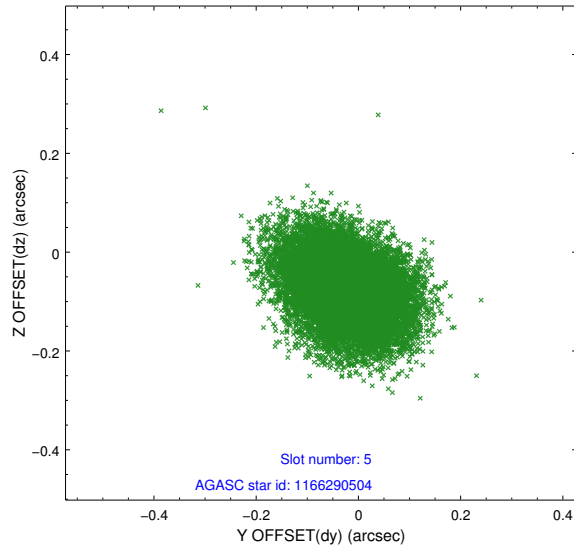


## 2.4.2 Slot 4

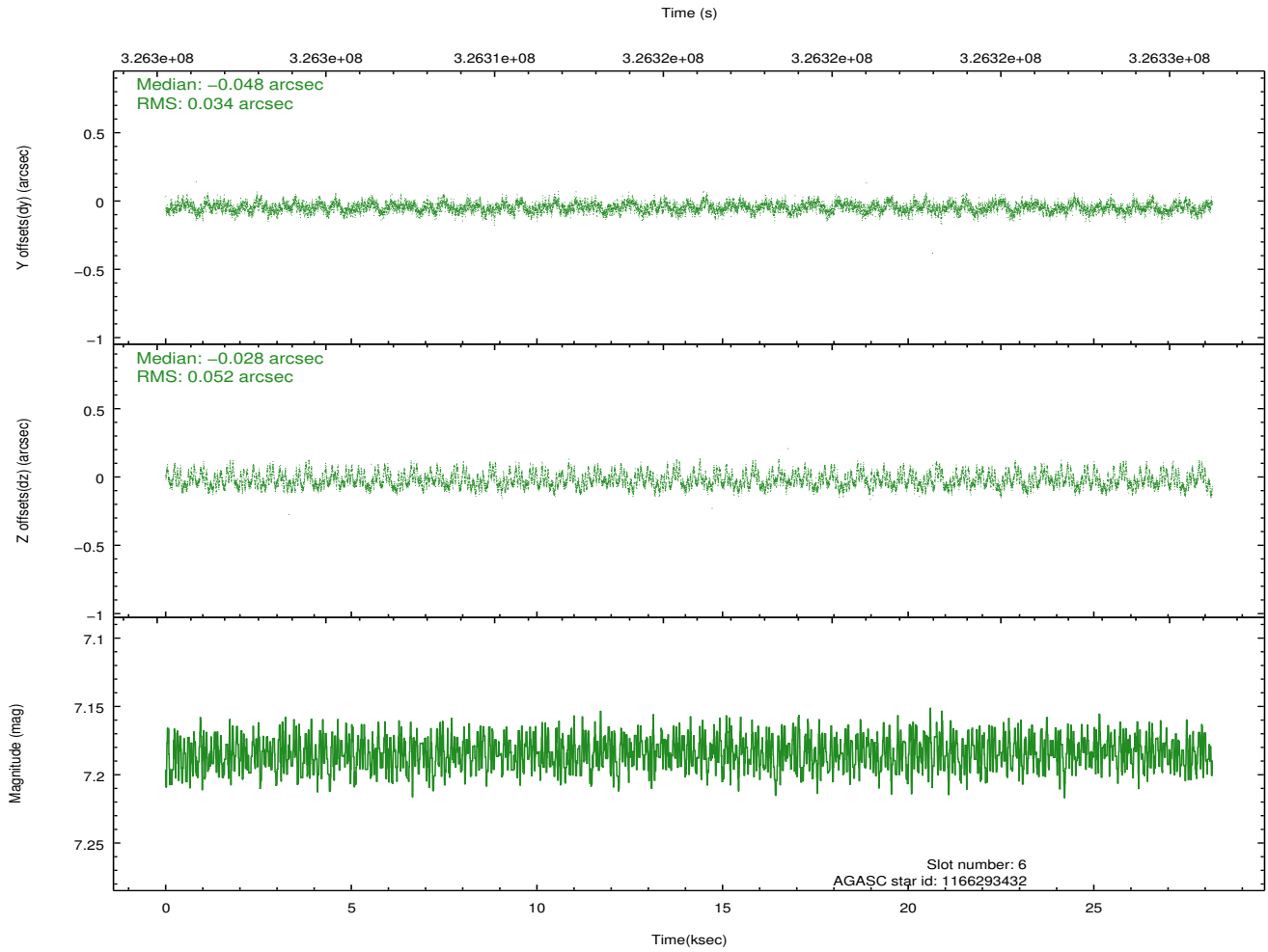
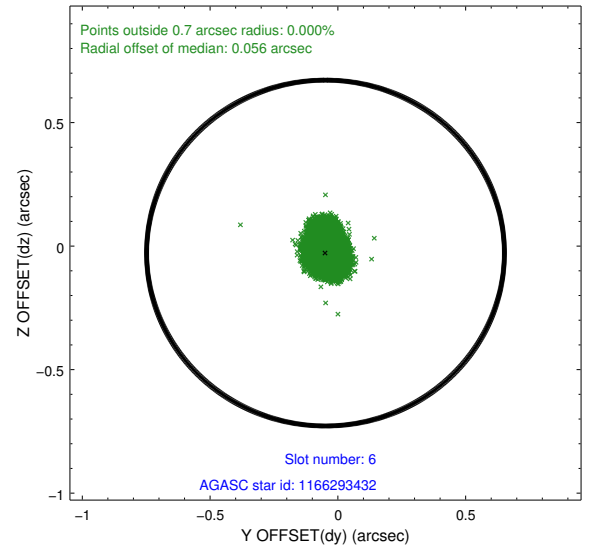
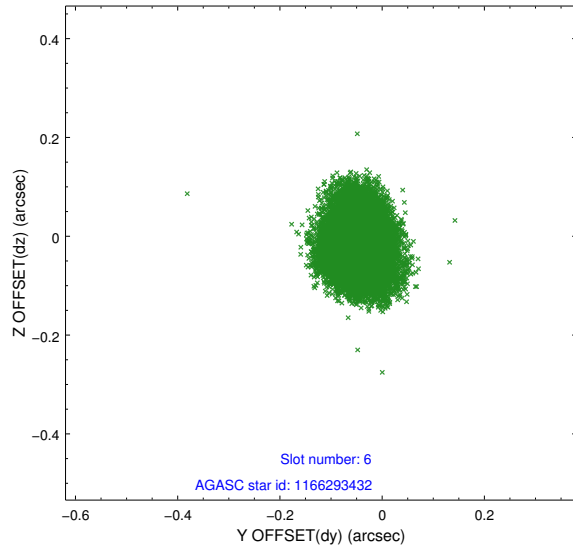




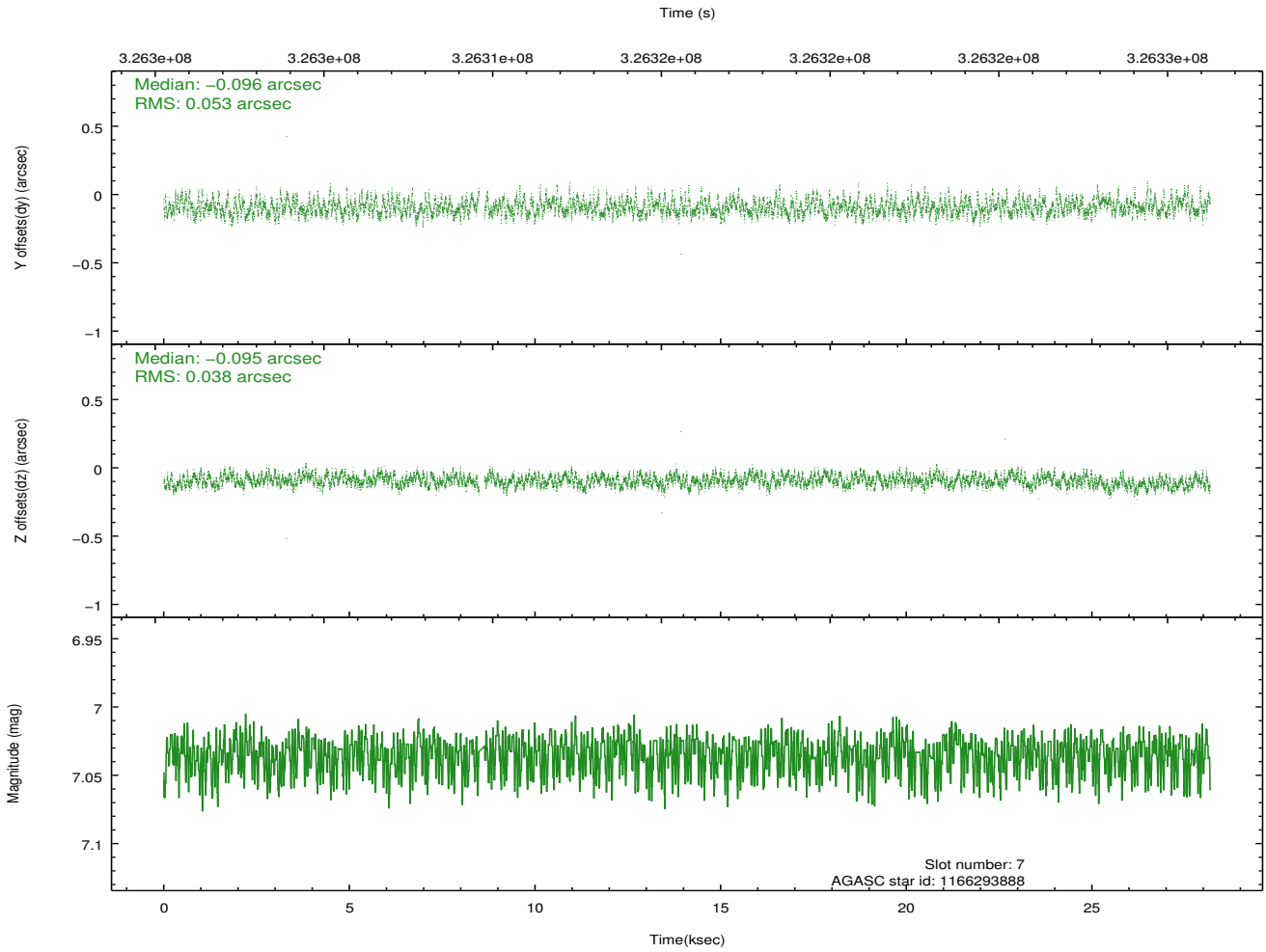
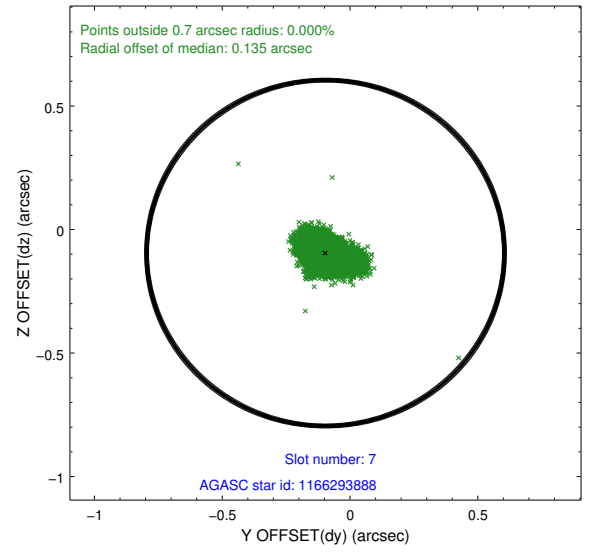
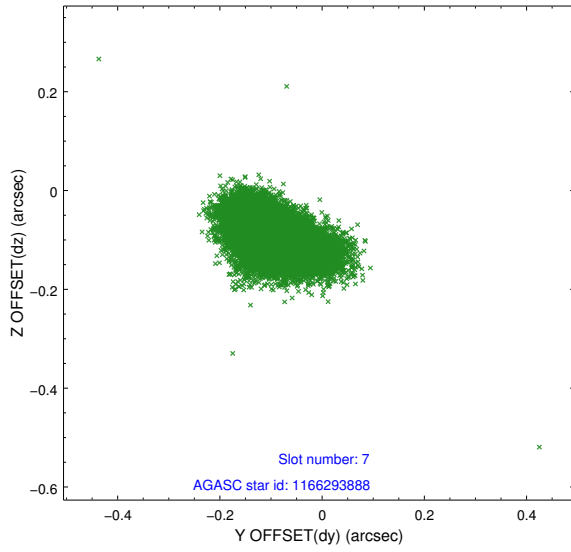
### 2.4.3 Slot 5



## 2.4.4 Slot 6

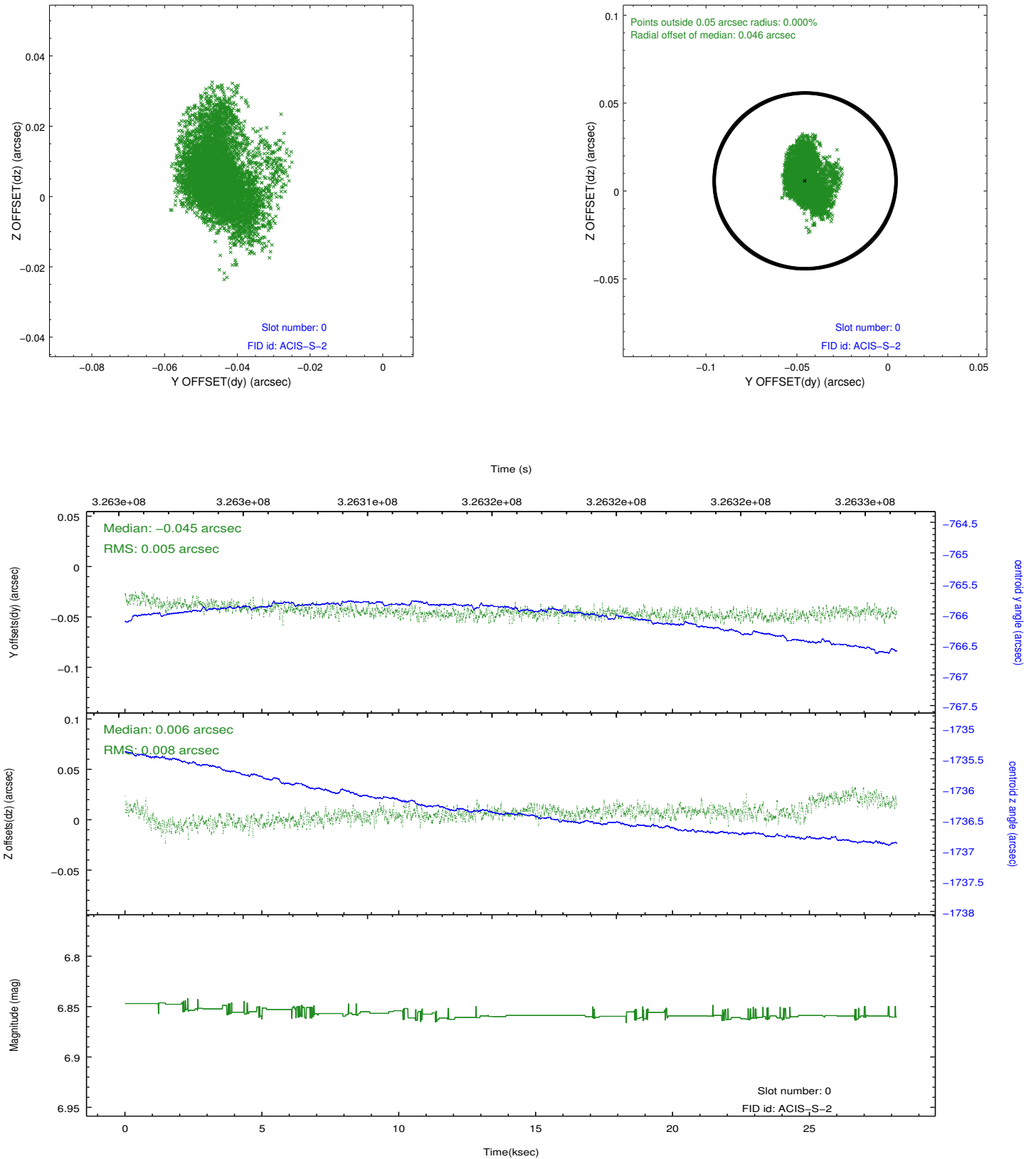


## 2.4.5 Slot 7

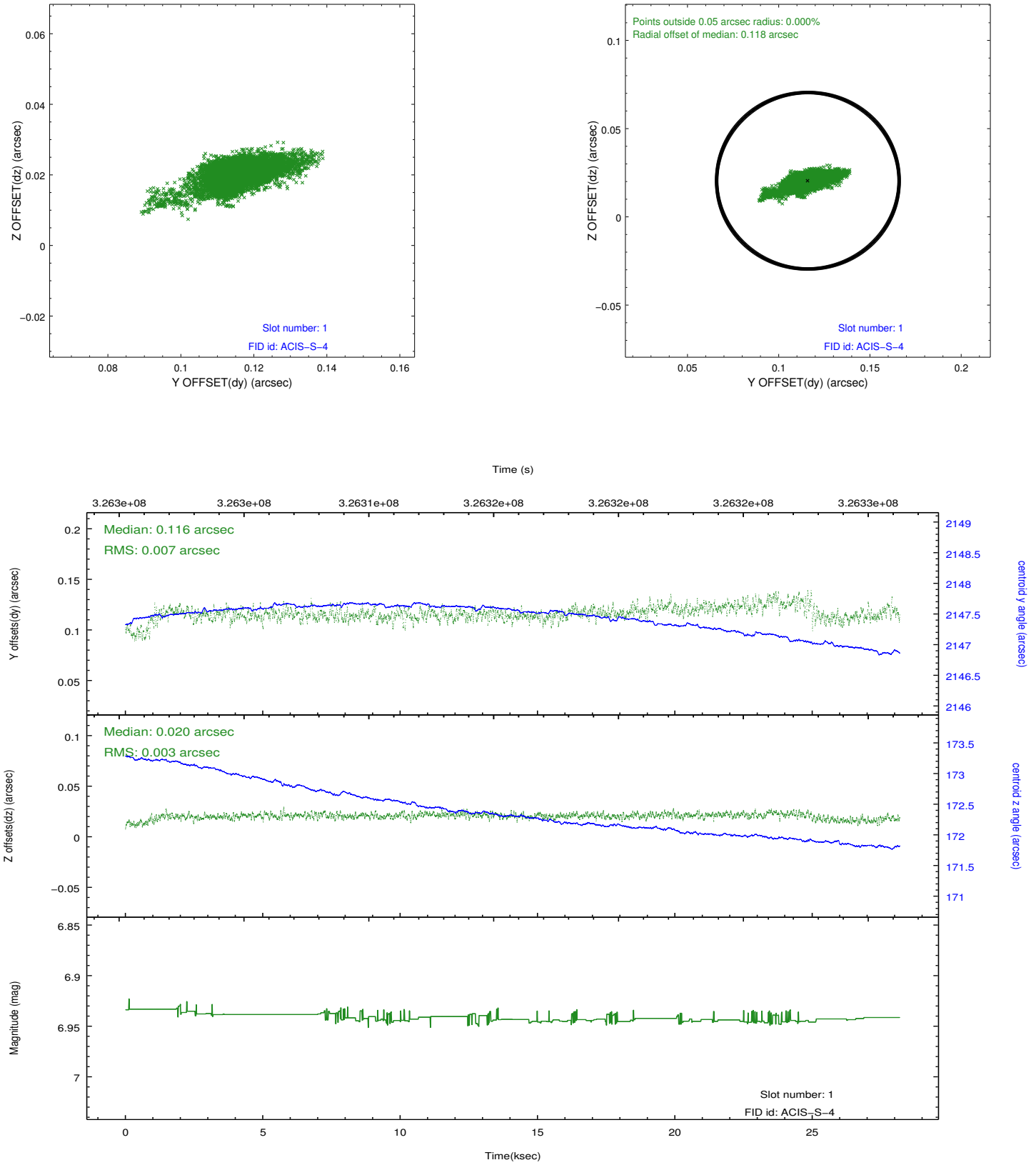


## 2.5 FID Slots

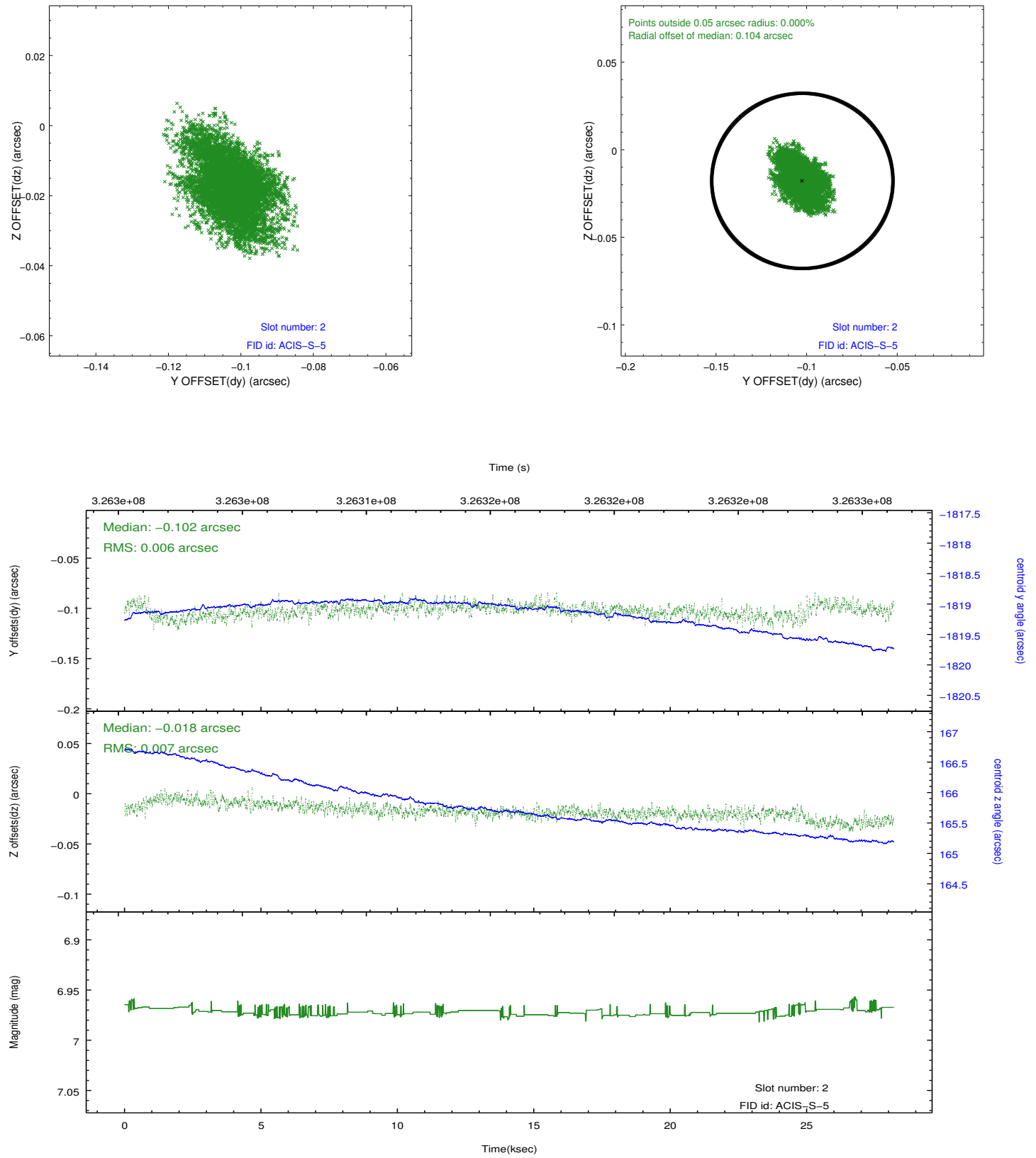
### 2.5.1 Slot 0



## 2.5.2 Slot 1



### 2.5.3 Slot 2



## A Summary

### A.1 Status

V&V Scientist	Beth Sundheim
V&V Date (YYYY-MM-DD)	2012.05.16
V&V Edition	1
V&V Disposition and Status	OK
V&V Charge Time	28.1790002

### A.2 Comments